

Supplementary Information

α 2,6-Sialylation is Upregulated in Severe COVID-19 Implicating the Complement Cascade

Rui Qin^{1‡}, Emma Kurz^{2‡}, Shuhui Chen^{3‡}, Briana Zeck⁴, Luis Chiribogas⁴, Dana Jackson⁵, Alex Herchen⁵, Tyson Attia⁵, Michael Carlock⁶, Amy Rapkiewicz⁷, Dafna Bar-Sagi⁸, Bruce Ritchie⁴, Ted M. Ross⁶, Lara K. Mahal^{1*}

¹ Department of Chemistry, University of Alberta, Edmonton, Alberta, Canada

² Department of Cell Biology, NYU Grossman School of Medicine, 550 1st Avenue, New York, New York, USA

³ Department of Chemistry, Biomedical Research Institute, New York University, New York, New York, USA

⁴ Center for Biospecimen Research and Development, NYU Langone, New York, New York, USA

⁵ University of Alberta Hospital, Edmonton, Alberta, Canada

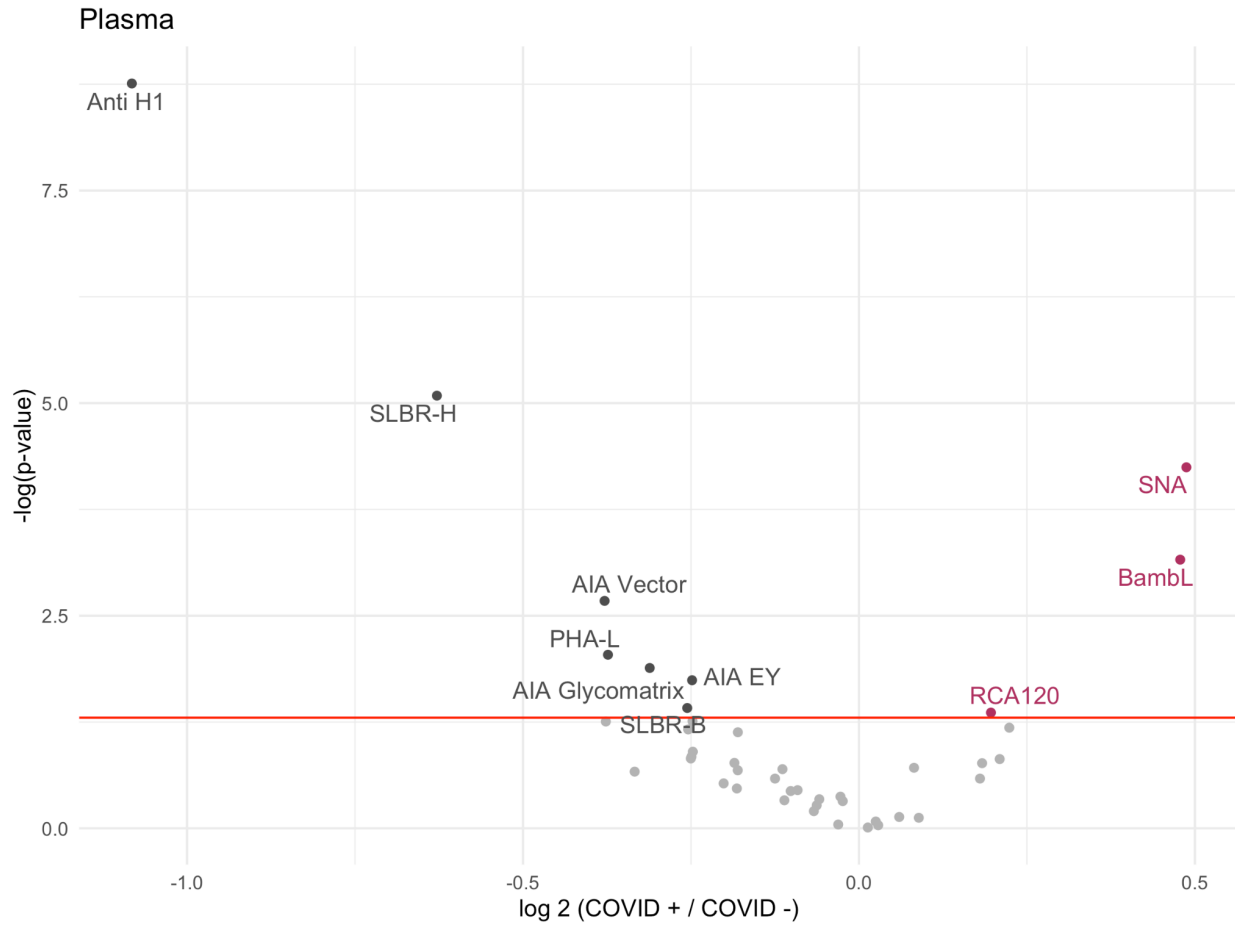
⁶ Center for Vaccines and Immunology, University of Georgia, Athens, Georgia, USA

⁷ Department of Pathology, NYU Long Island School of Medicine, Mineola, NY, USA

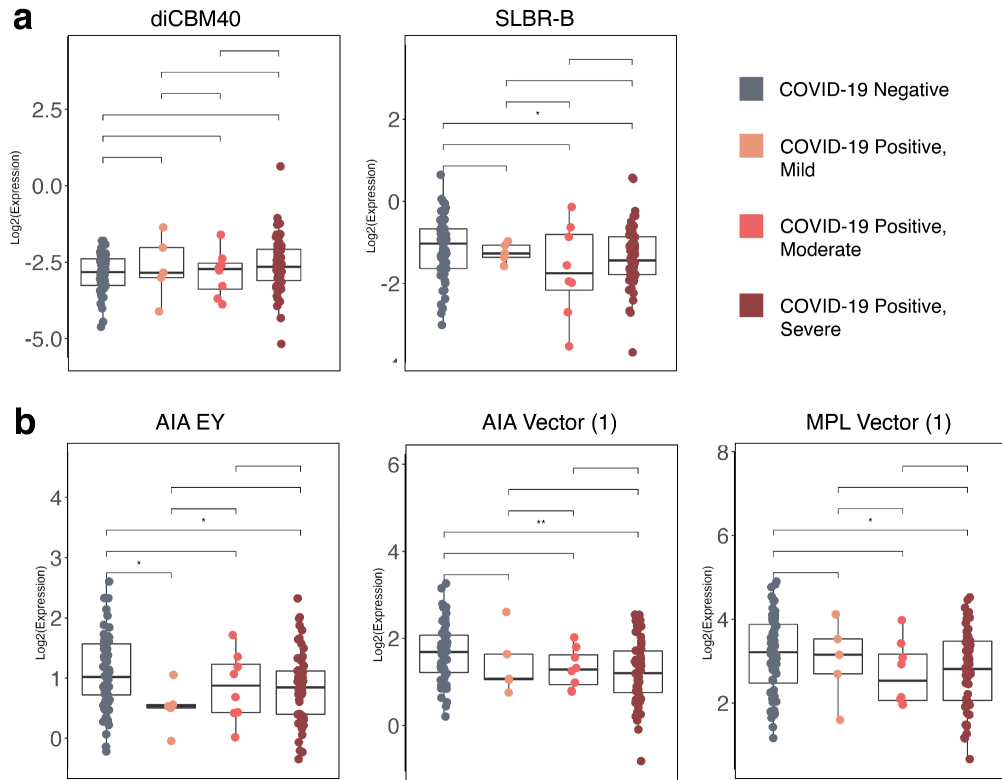
⁸ Department of Biochemistry and Molecular Pharmacology, NYU Grossman School of Medicine, New York, New York, USA

*Corresponding author. Email: lkmahal@ualberta.ca

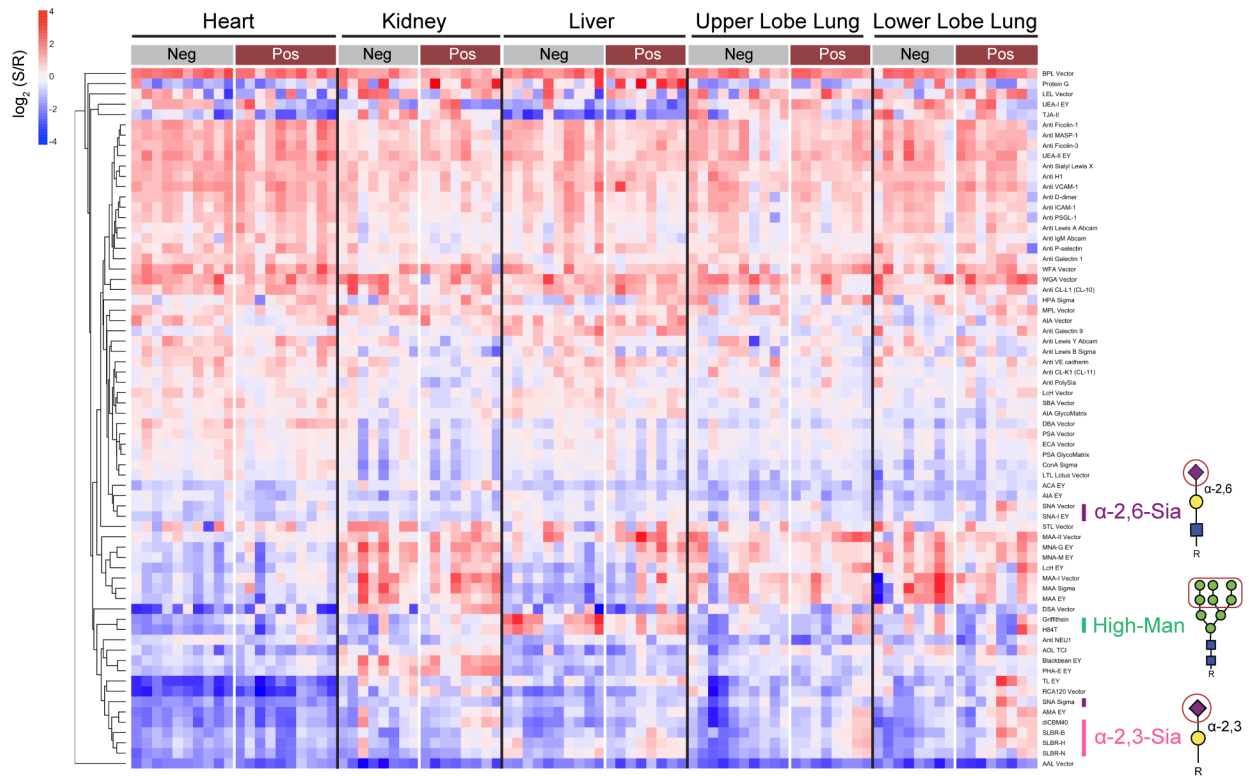
‡ Co-first authorship.



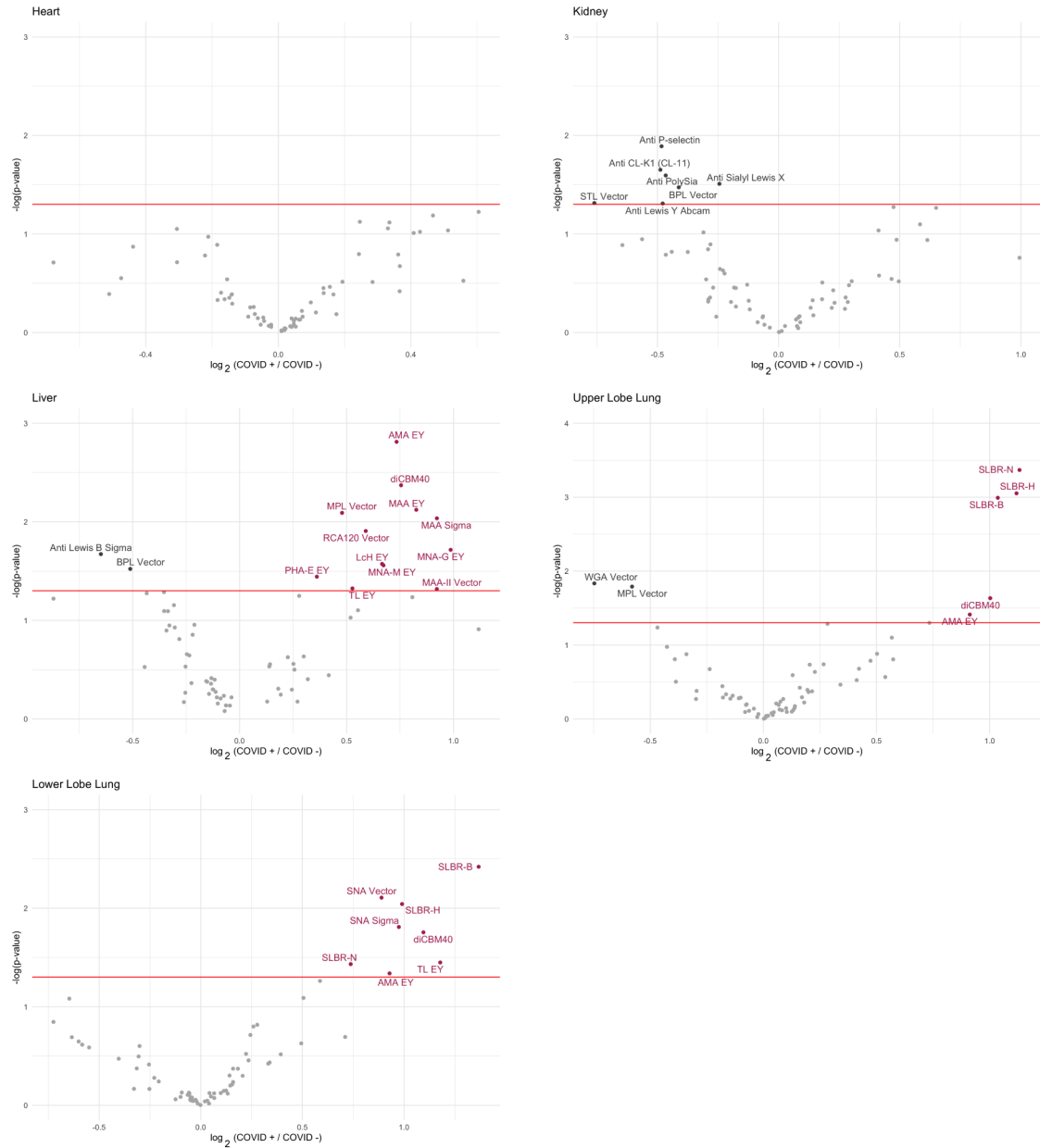
Supplementary Figure 1. Volcano plot comparing lectin microarray data for COVID-19 positive patients (n = 71) and negative controls (n = 60). Probes whose binding is statistically significantly decreased in the COVID-19 cohort when compared to controls are on the left of the volcano plot (dark grey). Probes whose binding is increased are on the right (maroon). The red line indicates $p < 0.05$ by the Mann–Whitney U test.



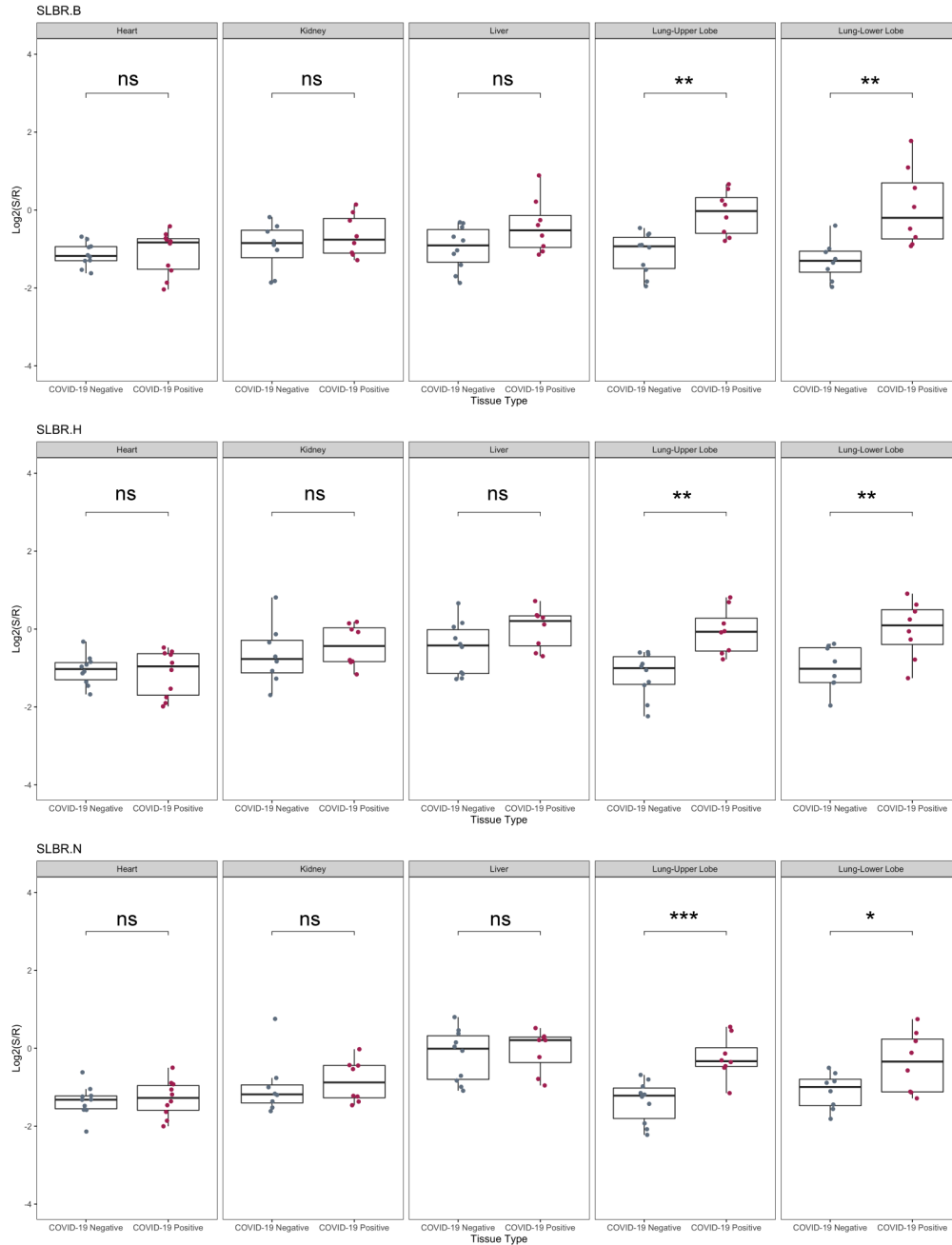
Supplementary Figure 2: Boxplot analysis of (a) α -2,3-sialic acid binding lectins and (b) core 1/3 O-glycan binding lectins between patient groups. Mann-Whitney U test was used to determine p values. *: $p < 0.05$; **: $p < 0.01$.



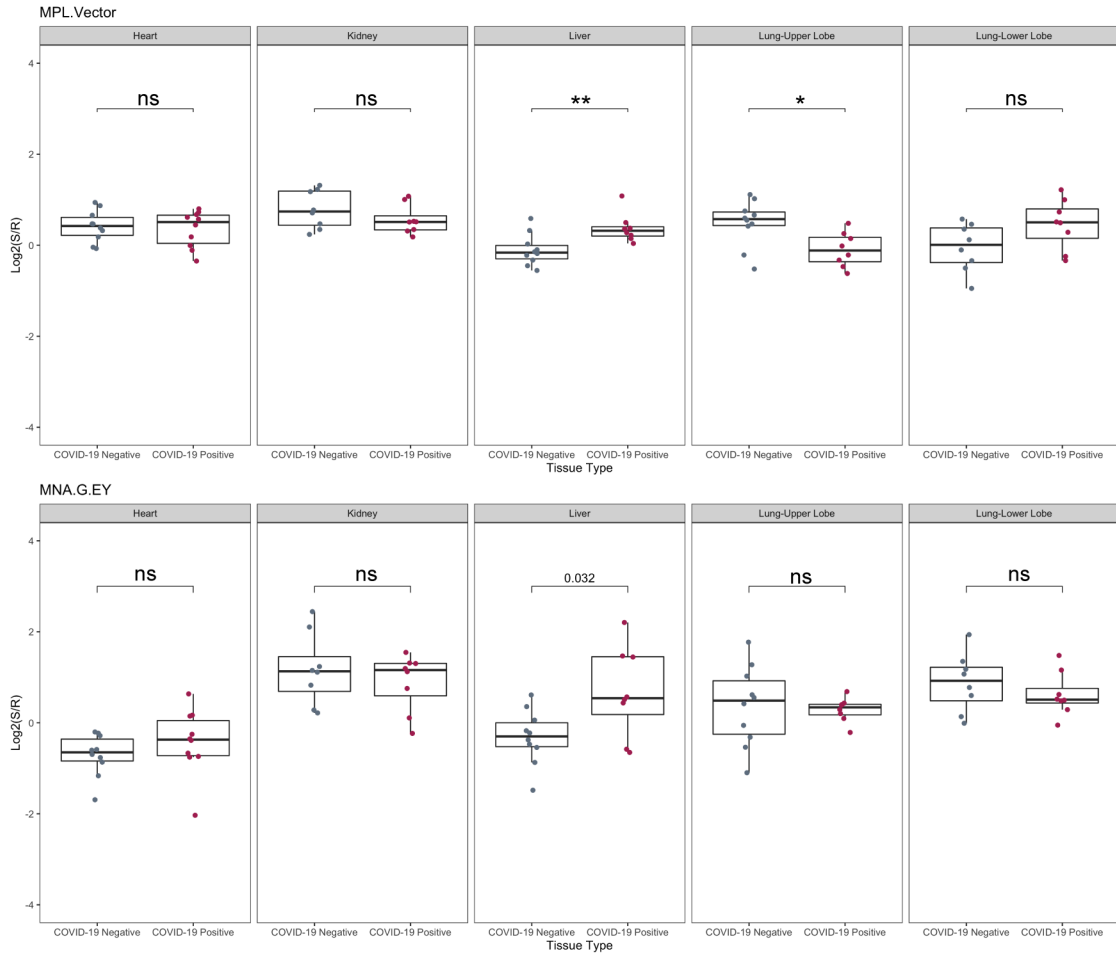
Supplementary Figure 3. Multi-organ glycomic analysis of COVID-19 deceased patients. Heatmap of lectin microarray data with the complete list of lectins. Samples from organs of patients who died of COVID (heart: n=5; kidney: n=4; liver: n=4; upper lobe lung: n=4; lower lobe lung: n=4, 2 samples per patient) or other causes (heart: n=5; kidney: n=4; liver: n=5; upper lobe lung: n=5; lower lobe lung: n=4, 2 samples per patient) were analyzed. Median normalized log₂ ratios (Sample (S)/Reference (R)) were ordered by organ and COVID status. Red, log₂(S) > log₂(R); blue, log₂(R) > log₂(S). Lectins binding α2,3-sialosides (pink), α2,6-sialosides (purple) and high-mannose (bright green) are highlighted to the right of the heatmap.



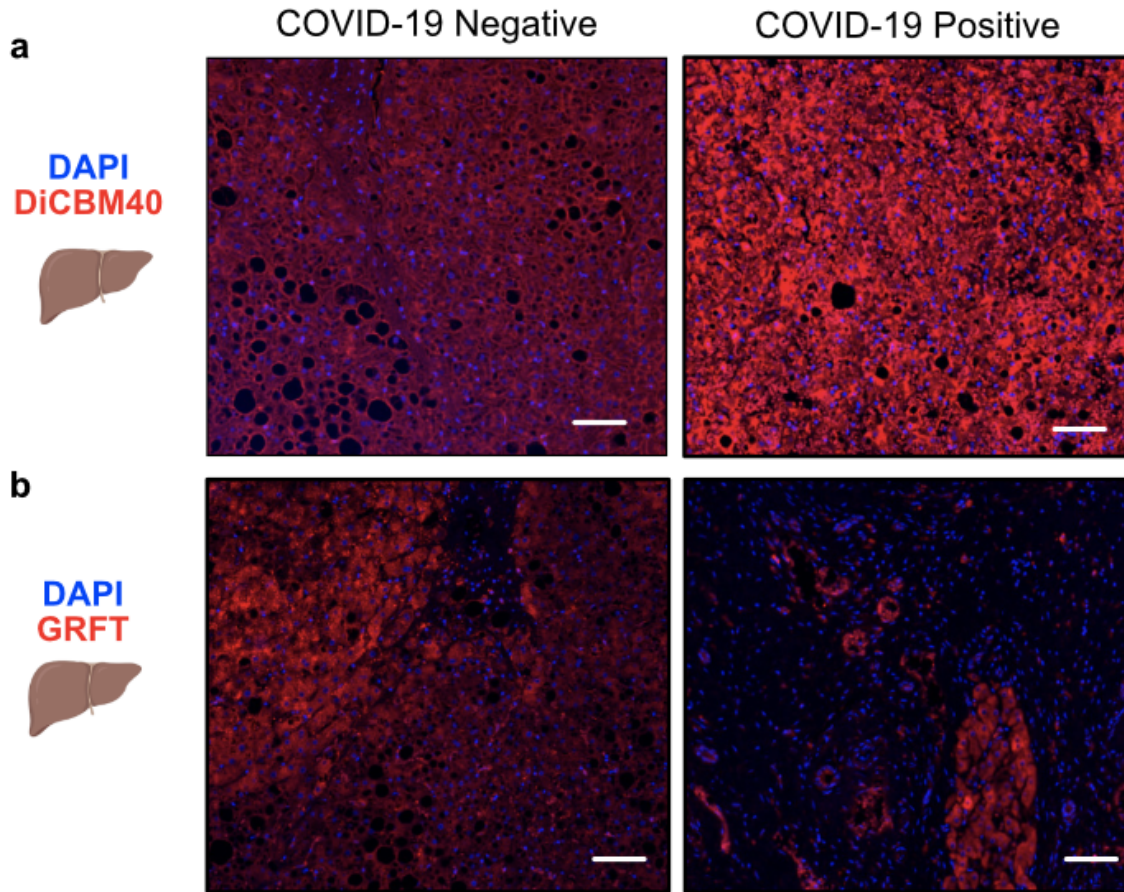
Supplementary Figure 4. Volcano plot depicting glycan changes of individual organ of COVID-19 deceased patients. Probes whose binding is statistically significantly decreased in the COVID-19 cohort when compared to controls are on the left of the volcano plot (dark grey). Probes whose binding is increased are on the right (maroon). The red line indicates $p < 0.05$ by Student's t-test.



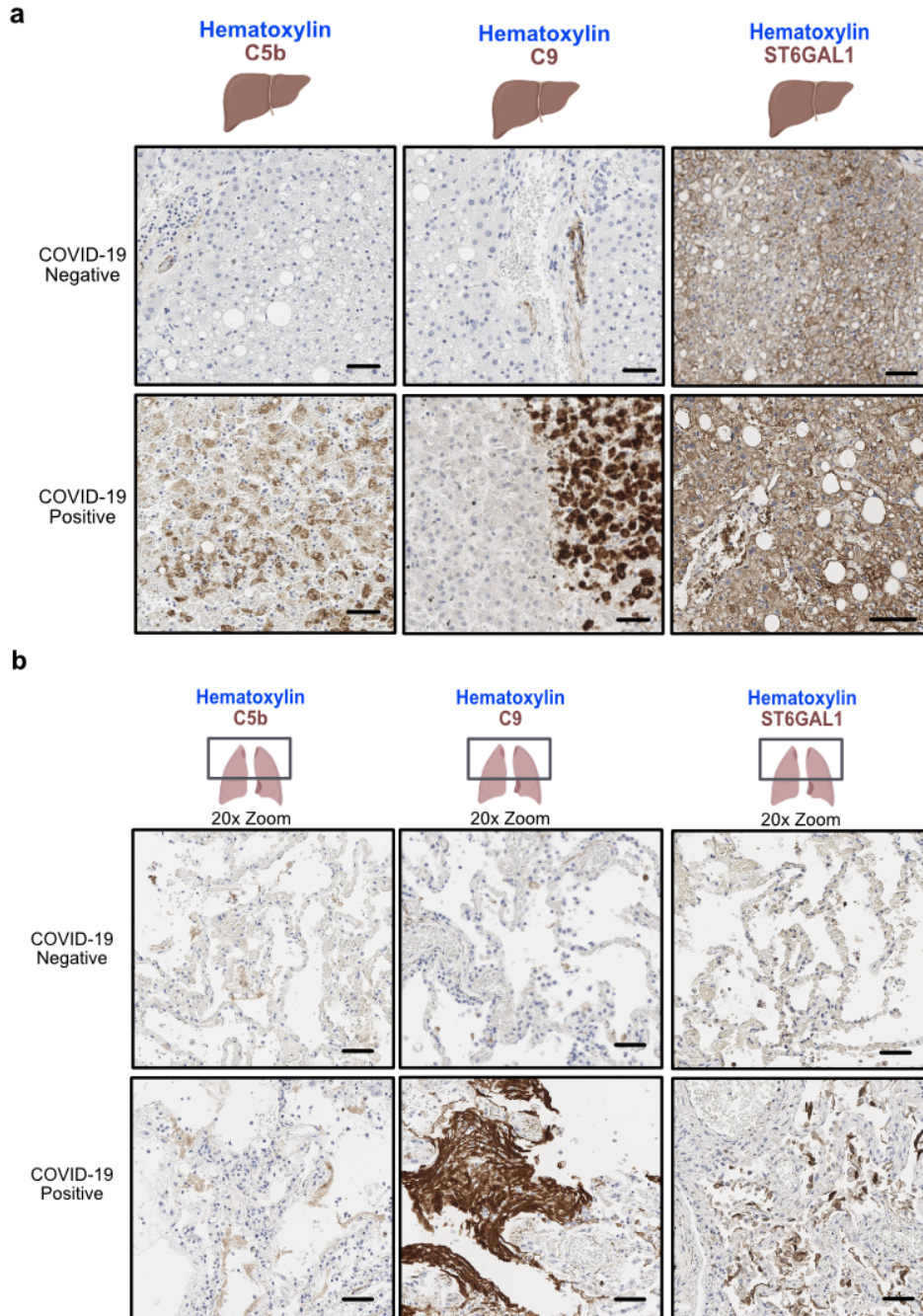
Supplementary Figure 5. Boxplot analysis of α 2,3-sialic acids by SLBR-B, SLBR-H, SLBR-N. Organs (from left to right): heart, kidney, liver, upper lobe of lung and lower lobe of lung from patients deceased from COVID-19 (maroon), and from other incidents as negative controls (gray). P-value is derived from Student's t-test and red * indicates $p < 0.05$.



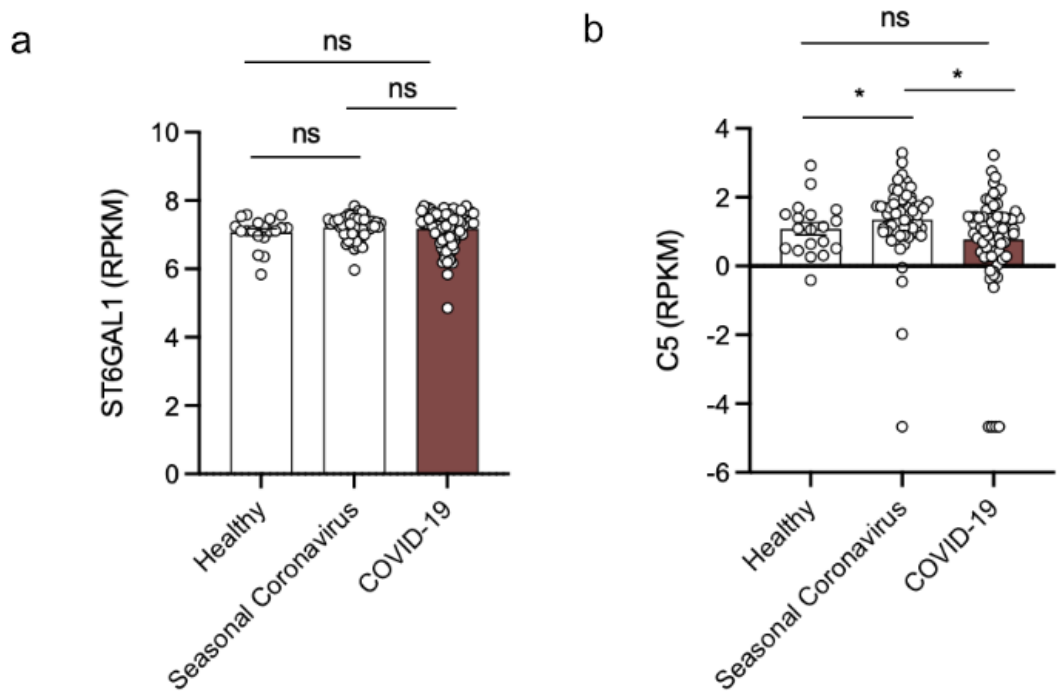
Supplementary Figure 6. Boxplot analysis of core 1/3 O-linked glycans by MPL and MNA-G. Organs (from left to right): heart, kidney, liver, upper lobe of lung and lower lobe of lung from patients deceased from COVID-19 (maroon), and from other incidents as negative controls (gray). P-value is derived from Student's t-test and red * indicates $p < 0.05$.



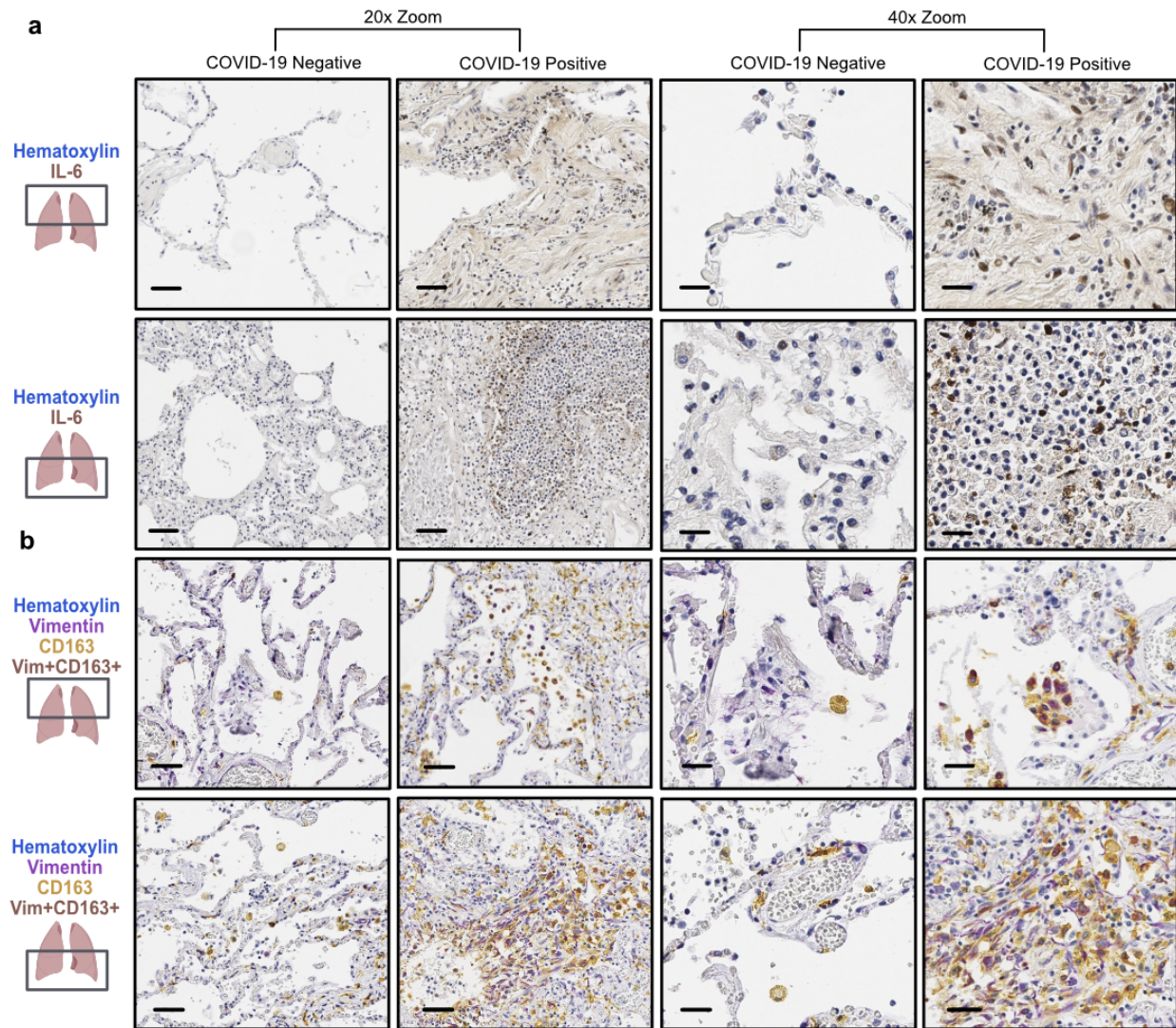
Supplementary Figure 7. Expression of Select Lectins in COVID-19 Autopsy Livers. (a) Representative images of IF staining against diCBM40 in the liver in COVID-19 negative (n = 2) or COVID-19 positive (n = 8) autopsy specimens. Scale bars represent 200 μ m. (b) Representative images of IF staining against GRFT in the liver in COVID-19 negative (n = 2) or COVID-19 positive (n = 8) autopsy specimens. Scale bars represent 200 μ m.



Supplemental Figure 8. Complement and ST6GAL1 Expression in COVID-19 Autopsy Lungs and Livers. **(a)** Representative images of IHC staining against complement C5b (left), C9 (middle) and ST6GAL1 (right) in the liver of COVID-19 negative (n = 2) or COVID-19 positive (n = 8) autopsy specimens. Scale bars represent 100 μ m. **(b)** Representative images of IHC staining against complement C5b (left), C9 (middle) and ST6GAL1 (right) in the upper lobe of COVID-19 negative (n = 2) or COVID-19 positive (n = 8) autopsy specimens.



Supplemental Figure 9. ST6GAL1 and C5 Expression on Whole Blood RNA Sequencing in COVID-19 and Seasonal Coronavirus. ST6GAL1 **(a)** and C5 **(b)** mRNA expression in whole blood of healthy controls (n = 19) or those with seasonal coronavirus (n = 59), or COVID-19 (n = 46), from Gene Expression Omnibus: GSE161731.



Supplemental Figure 10. IL-6⁺ and CD163⁺Vimentin⁺ Cells Enriched in Lower Lobe of Lungs of COVID-19 Positive Autopsy Samples. (a) Representative images of IHC staining against IL-6 in the lower lobe of the lung of COVID-19 negative (n = 2) or COVID-19 positive (n = 8) autopsy specimens. Scale bars represent 100 μ m on left, and 50 μ m on right, throughout. (b) Representative images of multi-chromogenic IHC staining against vimentin (purple), CD163 (yellow), and hematoxylin (blue) showing double positive cells in brown in the lower lobe of the lung in COVID-19 negative (n = 2) or COVID-19 positive (n = 8) autopsy specimens (left). Scale bars represent 100 μ m on left, and 50 μ m on right, throughout.

Supplementary Table 1. Descriptive Characteristics of Cohorts for COVID-19 Negative and COVID-19 Positive Plasma Samples

	COVID-19 Positive (n=71)	COVID-19 Negative (n=60)
Male/Female (ratio)	39/30 (1.30)	35/25 (1.40)
Median Age in Years (IQR)	61 (50-73)	61 (50-71)
Collection Date Ranges in YYYY/MM-YYYY/MM (n)	2020/07-2020/09 (2) 2020/10-2021/01 (64) 2021/02-2021/04 (5)	2019/09-2019/10 (60)

Note:

- (1) The gender information of 2 participants of the COVID-19 positive cohort is not available.
- (2) The age information of 2 participants of the COVID-19 positive cohort is not available.

Supplementary Table 2. Patient Characteristics for COVID-19 Negative and COVID-19 Positive Autopsy Samples

Patient	Age:	Gender:	COVID -19 Status:	Diagnoses:	Pulmonary Pathology (Y/N)
1	50-60	Male	Negative	-DAD; pleural effusion -MI; hypertrophy -Cirrhosis, Hep C+	Y
2	60-70	Male	Negative	-Subarachnoid Hemorrhage, internal carotid artery dissection	N
3	0-10	Female	Negative	-GBM -Aspiration pneumonia (Staph Aureus) -Cardiomegaly	Y
4	70-80	Female	Negative	-DAD -MI; coronary artery disease	Y
5	70-80	Female	Negative	-CHF -intra-abdominal hemorrhage -CKD; pneumonia	Y
6	70-80	Female	Negative	-DAD; pulmonary infarcts, lung congestion**	Y
7	40-50	Male	Negative	-Cor pulmonale due to pericarditis and hemorrhage; -pulmonary emboli	Y
8	60-70	Male	Negative	-pleural fluid -Coronary artery disease -hepatomegaly	N
9	70-80	Male	Negative	-Disseminated intravascular coagulation to sepsis -DAD; cardiomegaly	Y
9	70-80	Male	Negative	-Hypovolemic shock -CHF -pulmonary edema with pleural effusions	Y
10	60-70	Female	Positive	-COPD, lung cancer	Y
11	50-60	Female	Positive	N/A	Y
12	70-80	Female	Positive	-Coronary artery disease, adrenal adenoma -COPD	Y
13	60-70	Female	Positive	-Renal cell carcinoma, partial nephrectomy -DAD	Y
14	60-70	Male	Positive	-CAD -acute MI	Y
15	50-60	Female	Positive	-Hyperthyroidism -DAD	Y
16	40-50	Male	Positive	-DAD -Acute Kidney Injury	Y
17	60-70	Male	Positive	-Cirrhosis, CKD -PVD	Y

Key: DAD = Diffuse Alveolar Damage; MI = myocardial ischemia; CHF = congestive heart failure; CKD = chronic kidney disease; CAD = coronary artery disease

**Autopsy Limited to Lungs Only.

Supplementary Table 3. Microarray Lectin List for Plasma Analysis

Lectin/Antibody	Supplier	Species of Origin	Printing concentration. (mg/ml)	Inhibiting Sugar*
ACA	EY	<i>Amaranthus caudatus</i>	2.0	GlcNAc
AIA	EY	<i>Artocarpus integrifolia</i>	2.0	Gal
AIA	Vector (lot#1)	<i>Artocarpus integrifolia</i>	2.0	Gal
AIA v2	Vector (lot#2)	<i>Artocarpus integrifolia</i>	2.0	Gal
AIA	GlycoMatrix	<i>Artocarpus integrifolia</i>	1.5	Fuc
Anti Lewis A	Abcam	/	as received	/
Anti Lewis B	Sigma	/	as received	/
Anti O-GlcNAc	Thermo Fisher	/	as received	/
Anti PolySia	Absolute Antibody	/	as received	/
Anti PSGL-1	Sigma	/	as received	/
Anti Sialyl Lewis X	GeneTex	/	as received	/
Anti VCAM-1	Sigma	/	as received	/
Anti VE cadherin	Thermo Fisher	/	as received	/
AOL	TCI America	<i>Aspergillus oryzae</i>	2.0	Fuc
BamBL	<i>Burkholderia cepacia</i>	expressed in-house	1.5	Fuc
BanLec H84T	UAlberta	<i>Musa paradisiaca</i>	1.0	Man
BPL	Vector	<i>Bauhinia purpurea</i>	2.0	Gal
ConA	Sigma	<i>Canavalia ensiformis</i>	2.0	Man
ConA	Vector	<i>Canavalia ensiformis</i>	2.0	Man
diCBM40	UAlberta	<i>Clostridium perfringens</i>	1.5	Lac
DSA	Vector	<i>Datura stramonium</i>	2.0	Lac
ECA	Vector	<i>Erythrina cristagalli</i>	2.0	GlcNAc
LcH	Aniara (lot #1)	<i>Lens culinaris</i>	1.5	Man
LcH	Aniara (lot #2)	<i>Lens culinaris</i>	1.5	Man
LcH	EY	<i>Lens culinaris</i>	2.0	Man
LEL	Vector	<i>Lycopersicon esculentum</i>	2.0	GlcNAc
MNA-M	EY	<i>Morniga M</i>	2.0	Man
MPL	Vector	<i>Machura pomifera</i>	2.0	Gal
PHA-E	EY	<i>Phaseolus vulgaris</i>	2.0	GlcNAc
PHA-E	Vector	<i>Phaseolus vulgaris</i>	2.0	GlcNAc
PHA-L	EY	<i>Phaseolus vulgaris</i>	2.0	GlcNAc
Protein A	Thermo Fisher	/	0.5	/
Protein G	Thermo Fisher	/	1.0	/
PSA	Vector	<i>Pisum sativum</i>	2.0	Man
RCA120	Vector	<i>Ricinus communis</i>	2.0	Gal
SLBR-B	UAlberta	<i>Streptococcus gordonii</i>	2.3	Lac
SLBR-H	UAlberta	<i>Streptococcus gordonii</i>	2.0	Lac
SLBR-N	UAlberta	<i>Streptococcus gordonii</i>	2.0	Lac
SNA	Vector	<i>Sambucus nigra</i>	2.0	Lac
STL	Vector	<i>Solanum tuberosum</i>	2.0	GlcNAc
TJA-II	Aniara	<i>Trichosanthes japonica</i>	2.0	Lac
WGA	Vector	<i>Triticum vulgare</i>	2.0	GlcNAc

*Inhibiting sugars: Man, mannose; Gal, galactose; Fuc, fucose; GlcNAc, N-acetylglucosamine; Lac, lactose.

Supplementary Table 4. Microarray Lectin List for Autopsy Sample Analysis

Lectin/Antibody	Supplier	Species of Origin	Printing concentration. (mg/ml)	Inhibiting Sugar*
AAL	Vector	<i>Aleuria aurantia</i>	1.5	Fuc
ACA	EY	<i>Amaranthus caudatus</i>	2.0	GlcNAc
AIA	EY	<i>Artocarpus integrifolia</i>	2.0	Gal
AIA	Vector	<i>Artocarpus integrifolia</i>	2.0	Gal
AIA	GlycoMatrix	<i>Artocarpus integrifolia</i>	1.5	Fuc
AMA	EY	<i>Arum maculatum</i>	2.0	Man
Anti CL-K1 (CL-11)	LSBio	/	as received	/
Anti CL-L1 (CL-10)	LSBio	/	as received	/
Anti D-dimer	Thermo Fisher	/	as received	/
Anti Ficolin-1	LSBio	/	as received	/
Anti Ficolin-3	LSBio	/	as received	/
Anti Galectin 1	Abcam	/	as received	/
Anti Galectin 9	R&D Systems	/	as received	/
Anti H1	Thermo Fisher	/	as received	/
Anti ICAM-1	Thermo Fisher	/	as received	/
Anti IgM	Abcam	/	as received	/
Anti Lewis A	Abcam	/	as received	/
Anti Lewis B	Sigma	/	as received	/
Anti Lewis Y	Abcam	/	as received	/
Anti MASP-1	Abcam	/	as received	/
Anti NEU1	Thermo Fisher	/	as received	/
Anti P-selectin	Thermo Fisher	/	as received	/
Anti PolySia	Absolute Antibody	/	as received	/
Anti PSGL-1	Sigma	/	as received	/
Anti Sialyl Lewis X	GeneTex	/	as received	/
Anti VCAM-1	Sigma	/	as received	/
Anti VE cadherin	Thermo Fisher	/	as received	/
AOL	TCI America	<i>Aspergillus oryzae</i>	2.0	Fuc
BanLec H84T	UAlberta	<i>Musa paradisiaca</i>	1.0	Man
Blackbean	EY	<i>Phaseolus vulgaris</i>	2.0	Lac
BPL	Vector	<i>Bauhinia purpurea</i>	2.0	Gal
ConA	Sigma	<i>Canavalia ensiformis</i>	2.0	Man
DBA	Vector	<i>Dolichos Biflorus</i>	2.0	Gal
diCBM40	UAlberta	<i>Clostridium perfringens</i>	1.5	Lac
DSA	Vector	<i>Datura stramonium</i>	2.0	Lac
ECA	Vector	<i>Erythrina cristagalli</i>	2.0	GlcNAc
Griffithsin	UAlberta	<i>Griffithsia</i>	1.7	Man
LcH	Vector	<i>Lens culinaris</i>	1.5	Man
LcH	EY	<i>Lens culinaris</i>	2.0	Man
LEL	Vector	<i>Lycopersicon esculentum</i>	2.0	GlcNAc
LTL Lotus	Vector	<i>Lotus tetragonolobus</i>	2.0	Fuc
MAA	Sigma	<i>Maachia amurensis</i>	2.0	Lac
MAA-I	Vector	<i>Maachia amurensis</i>	2.0	Lac
MAA-II	Vector	<i>Maachia amurensis</i>	1.0	Lac
MNA-G	EY	<i>Morniga G</i>	2.0	Gal
MNA-M	EY	<i>Morniga M</i>	2.0	Man
MPL	Vector	<i>Machura pomifera</i>	2.0	Gal
PHA-E	EY	<i>Phaseolus vulgaris</i>	2.0	GlcNAc
Protein G	Thermo Fisher	/	1.0	/
PSA	Vector	<i>Pisum sativum</i>	2.0	Man
PSA	GlycoMatrix	<i>Pisum sativum</i>	2.0	Man
PTA Gal	EY	<i>Psophocarpus tetragonolobus</i>	2.0	Gal
PTA GalNAc	EY	<i>Psophocarpus tetragonolobus</i>	2.0	Gal
RCA120	Vector	<i>Ricinus communis</i>	2.0	Gal
SBA	Vector	<i>Glycine max</i>	2.0	Gal

SLBR-B	UAlberta	<i>Streptococcus gordonii</i>	2.3	Lac
SLBR-H	UAlberta	<i>Streptococcus gordonii</i>	2.0	Lac
SLBR-N	UAlberta	<i>Streptococcus gordonii</i>	2.0	Lac
SNA	Vector	<i>Sambucus nigra</i>	2.0	Lac
SNA	Sigma	<i>Sambucus nigra</i>	2.0	Lac
SNA-I	EY	<i>Sambucus nigra</i>	2.0	Lac
STL	Vector	<i>Solanum tuberosum</i>	2.0	GlcNAc
TJA-II	Aniara	<i>Trichosanthes japonica</i>	2.0	Lac
TL	EY	<i>Tulipa sp.</i>	2.0	GlcNAc
UEA-I	EY	<i>Ulex europaeus</i>	2.0	Fuc
UEA-II	EY	<i>Ulex europaeus</i>	2.0	GlcNAc
WFA	Vector	<i>Wisteria floribunda</i>	2.0	Gal
WGA	Vector	<i>Triticum vulgare</i>	2.0	GlcNAc

*Inhibiting sugars: Man, mannose; Gal, galactose; Fuc, fucose; GlcNAc, N-acetylglucosamine; Lac, lactose.

Supplementary Table 5. Proteins in SNA-enriched Severe COVID-19 Plasma

Protein Name	UniProt Entry Name	Accession	Average Number of Spectral Matches
Fibrinogen beta chain	FIBB_HUMAN	P02675	496
Fibrinogen alpha chain	FIBA_HUMAN	P02671	292
Fibrinogen gamma chain	FIBG_HUMAN	P02679	264
Complement C3	CO3_HUMAN	P01024	236
Apolipoprotein B-100	APOB_HUMAN	P04114	193
Alpha-1-antitrypsin	A1AT_HUMAN	P01009	157
Alpha-2-macroglobulin	A2MG_HUMAN	P01023	141
Fibrinogen gamma chain (Fragment)	C9JPQ9_HUMAN	C9JPQ9	136
Complement factor H	CFAH_HUMAN	P08603	125
Plasminogen	PLMN_HUMAN	P00747	81
Hemopexin	HEMO_HUMAN	P02790	73
Immunoglobulin kappa constant	IGKC_HUMAN	P01834	67
Alpha-1-antichymotrypsin	AACT_HUMAN	P01011	55
Prothrombin	THRB_HUMAN	P00734	51
Immunoglobulin heavy constant mu	IGHM_HUMAN	P01871	45
Inter-alpha-trypsin inhibitor heavy chain H4	ITIH4_HUMAN	Q14624	45
Apolipoprotein A-IV	APOA4_HUMAN	P06727	39
Immunoglobulin heavy constant alpha 2 (Fragment)	A0A0G2JMB2_HUMAN	A0A0G2JMB2	36
C3/C5 convertase	B4E1Z4_HUMAN	B4E1Z4	36
Fibronectin	FINC_HUMAN	P02751	36
Complement component C9	CO9_HUMAN	P02748	29
Apolipoprotein E	APOE_HUMAN	P02649	26
Vitronectin	VTNC_HUMAN	P04004	24
Complement component C6	CO6_HUMAN	P13671	24
Clusterin	CLUS_HUMAN	P10909	23
Alpha-1B-glycoprotein	A1BG_HUMAN	P04217	23
Complement C4-A	CO4A_HUMAN	P0COL4	22
Leucine-rich alpha-2-glycoprotein	A2GL_HUMAN	P02750	20
Complement C5	CO5_HUMAN	P01031	19
Complement factor H	A0A0D9SG88_HUMAN	A0A0D9SG88	19
Gelsolin	GELS_HUMAN	P06396	18
Thrombospondin-1	TSP1_HUMAN	P07996	18
Lipopolysaccharide-binding protein	LBP_HUMAN	P18428	17
Hemoglobin subunit alpha	HBA_HUMAN	P69905	17
Alpha-2-HS-glycoprotein	FETUA_HUMAN	P02765	16
Centrosomal protein of 290 kDa (Fragment)	A0A5K1VW81_HUMAN	A0A5K1VW81	16
Inter-alpha-trypsin inhibitor heavy chain H1	ITIH1_HUMAN	P19827	15
Complement subcomponent C1r	A0A3B3ISR2_HUMAN	A0A3B3ISR2	13
Complement component 8 subunit beta	F5GY80_HUMAN	F5GY80	13
Alpha-2-antiplasmin	A2AP_HUMAN	P08697	13
Immunoglobulin lambda constant 2	IGLC2_HUMAN	P0DOY2	13
Complement factor I	G3XAM2_HUMAN	G3XAM2	12
Pregnancy zone protein	PZP_HUMAN	P20742	12
Serum amyloid P-component	SAMP_HUMAN	P02743	11
Integrin alpha-IIb	ITA2B_HUMAN	P08514	10
Complement component C7	CO7_HUMAN	P10643	10
Complement component C8 gamma chain	CO8G_HUMAN	P07360	9
Uncharacterized protein C9orf43	CI043_HUMAN	Q8TAL5	9
Platelet factor 4	PLF4_HUMAN	P02776	9
Complement component C8 alpha chain	CO8A_HUMAN	P07357	9
Complement factor H-related protein 2	V9GYE7_HUMAN	V9GYE7	9
Fermitin family homolog 3	URP2_HUMAN	Q86UX7	9
Afamin	AFAM_HUMAN	P43652	8
Angiotensinogen	A0A7P0T9S6_HUMAN	A0A7P0T9S6	7

C-reactive protein	CRP_HUMAN	P02741	6
Carboxypeptidase N catalytic chain	CBPN_HUMAN	P15169	6
Ficolin-3	FCN3_HUMAN	O75636	5
Pigment epithelium-derived factor	PEDF_HUMAN	P36955	5
Plasma kallikrein	KLKB1_HUMAN	P03952	5
Pleckstrin	PLEK_HUMAN	P08567	5
Apolipoprotein L1	APOL1_HUMAN	O14791	4
Plasma serine protease inhibitor	IPSP_HUMAN	P05154	4
Thyroxine-binding globulin	THBG_HUMAN	P05543	4
Coagulation factor V	FA5_HUMAN	P12259	3
2-phospho-D-glycerate hydro-lyase	A0A2R8Y6G6_HUMAN	A0A2R8Y6G6	3
Potassium voltage-gated channel subfamily H member 1	A0A0S1TJ81_HUMAN	A0A0S1TJ81	3
N-acetylmuramoyl-L-alanine amidase	PGRP2_HUMAN	Q96PD5	3
Immunoglobulin lambda-like polypeptide 5	IGLL5_HUMAN	B9A064	3
Integrin beta (Fragment)	H3BM21_HUMAN	H3BM21	3
Apolipoprotein C-II	APOC2_HUMAN	P02655	3
Centromere-associated protein E	A0A087X0P0_HUMAN	A0A087X0P0	2
Corticosteroid-binding globulin (Fragment)	G3V4V7_HUMAN	G3V4V7	2
Beta-2-microglobulin	B2MG_HUMAN	P61769	2
Ig-like domain-containing protein (Fragment)	A0A0J9YY99_HUMAN	A0A0J9YY99	2
Protein ITPRID2	E7EUL7_HUMAN	E7EUL7	2
Protein mono-ADP-ribosyltransferase PARP6 (Fragment)	H3BUQ6_HUMAN	H3BUQ6	2
Insulin-like growth factor-binding protein complex acid labile subunit	ALS_HUMAN	P35858	2

Supplementary Table 6. Proteins in SNA-enriched Mild COVID-19 Plasma

Protein Name	UniProt Entry Name	Accession	Average Number of Spectral Matches
Fibrinogen gamma chain	FIBG_HUMAN	P02679	25
Complement C3	CO3_HUMAN	P01024	189
Apolipoprotein B-100	APOB_HUMAN	P04114	171
Haptoglobin	HPT_HUMAN	P00738	108
Alpha-1-antitrypsin	A1AT_HUMAN	P01009	137
Alpha-2-macroglobulin	A2MG_HUMAN	P01023	243
Complement factor H	CFAH_HUMAN	P08603	104
Haptoglobin-related protein	HPTR_HUMAN	P00739	70
Plasminogen	PLMN_HUMAN	P00747	39
Hemopexin	HEMO_HUMAN	P02790	97
Alpha-1-antichymotrypsin	AACT_HUMAN	P01011	35
Kininogen-1	KNG1_HUMAN	P01042	53
Immunoglobulin heavy constant mu	IGHM_HUMAN	P01871	60
Inter-alpha-trypsin inhibitor heavy chain H4	ITIH4_HUMAN	Q14624	43
Antithrombin-III	ANT3_HUMAN	P01008	49
Apolipoprotein E	APOE_HUMAN	P02649	14
Serum amyloid A-1 protein	SAA1_HUMAN	P0DJ18	2
Complement factor H-related protein 1	FHR1_HUMAN	Q03591	19
Lipopolysaccharide-binding protein	LBP_HUMAN	P18428	11
Hemoglobin subunit alpha	HBA_HUMAN	P69905	17
Alpha-2-HS-glycoprotein	FETUA_HUMAN	P02765	27
SAA2-SAA4 readthrough	A0A096LPE2_HUMAN	A0A096LPE2	8
Inter-alpha-trypsin inhibitor heavy chain H1	ITIH1_HUMAN	P19827	12
Alpha-2-antiplasmin	A2AP_HUMAN	P08697	10
Complement factor I	G3XAM2_HUMAN	G3XAM2	10
Pregnancy zone protein	PZP_HUMAN	P20742	16
Heparin cofactor 2	HEP2_HUMAN	P05546	10
Serum paraoxonase/arylesterase 1	PON1_HUMAN	P27169	5
Afamin	AFAM_HUMAN	P43652	23
Plasma kallikrein	KLKB1_HUMAN	P03952	7
Apolipoprotein L1	APOL1_HUMAN	O14791	4
Plasma serine protease inhibitor	IPSP_HUMAN	P05154	3
Thyroxine-binding globulin	THBG_HUMAN	P05543	5
Immunoglobulin lambda-like polypeptide 5	IGLL5_HUMAN	B9A064	5
Apolipoprotein C-II	APOC2_HUMAN	P02655	4
Beta-2-microglobulin	B2MG_HUMAN	P61769	2
Ig-like domain-containing protein (Fragment)	A0A0J9YY99_HUMAN	A0A0J9YY99	5
Protein ITPRID2	E7EUL7_HUMAN	E7EUL7	3

Supplementary Table 7. Upregulated Proteins in SNA-enriched Severe COVID-19 Plasma

Protein Name	UniProt Entry Name	Accession	Average Number of Spectral Matches (Severe)	Average Number of Spectral Matches (Mild)
Fibrinogen beta chain	FIBB_HUMAN	P02675	496	115
Fibrinogen alpha chain	FIBA_HUMAN	P02671	292	91
Fibrinogen gamma chain	FIBG_HUMAN	P02679	264	25
Haptoglobin	HPT_HUMAN	P00738	165	108
Fibrinogen gamma chain (Fragment)	C9JQP9_HUMAN	C9JQP9	136	0
Haptoglobin-related protein	HPTR_HUMAN	P00739	91	70
Plasminogen	PLMN_HUMAN	P00747	81	39
Alpha-1-antichymotrypsin	AACT_HUMAN	P01011	55	35
Prothrombin	THRB_HUMAN	P00734	51	0
Complement component C9	CO9_HUMAN	P02748	29	4
Apolipoprotein E	APOE_HUMAN	P02649	26	14
Vitronectin	VTNC_HUMAN	P04004	24	9
Complement component C6	CO6_HUMAN	P13671	24	2
Serum amyloid A-1 protein	SAA1_HUMAN	P0DJ18	24	2
Clusterin	CLUS_HUMAN	P10909	23	12
Complement C4-A	CO4A_HUMAN	P0C0L4	22	0
Complement C5	CO5_HUMAN	P01031	19	3
Complement factor H	A0A0D9SG88_HUMAN	A0A0D9SG88	19	0
Gelsolin	GELS_HUMAN	P06396	18	4
Thrombospondin-1	TSP1_HUMAN	P07996	18	3
Centrosomal protein of 290 kDa (Fragment)	A0A5K1VW81_HUMAN	A0A5K1VW81	16	5
Inter-alpha-trypsin inhibitor heavy chain H1	ITI1_HUMAN	P19827	15	12
Complement subcomponent C1r	A0A3B3ISR2_HUMAN	A0A3B3ISR2	13	0
Complement component 8 subunit beta	F5GY80_HUMAN	F5GY80	13	1
Serum amyloid P-component	SAMP_HUMAN	P02743	11	5
Integrin alpha-11b	ITA2B_HUMAN	P08514	10	0
Complement component C7	CO7_HUMAN	P10643	10	2
Complement component C8 gamma chain	CO8G_HUMAN	P07360	9	1
Uncharacterized protein C9orf43	CI043_HUMAN	Q8TAL5	9	0
Complement component C8 alpha chain	CO8A_HUMAN	P07357	9	1
Complement factor H-related protein 2	V9GYE7_HUMAN	V9GYE7	9	0
Fermitin family homolog 3	URP2_HUMAN	Q86UX7	9	0
Angiotensinogen	A0A7P0T9S6_HUMAN	A0A7P0T9S6	7	0
C-reactive protein	CRP_HUMAN	P02741	6	0
Carboxypeptidase N catalytic chain	CBPN_HUMAN	P15169	6	0
Ficolin-3	FCN3_HUMAN	O75636	5	1
Pigment epithelium-derived factor	PEDF_HUMAN	P36955	5	0
Pleckstrin	PLEK_HUMAN	P08567	5	0
Coagulation factor V	FA5_HUMAN	P12259	3	0
Potassium voltage-gated channel subfamily H member 1	A0A0S1TJ81_HUMAN	A0A0S1TJ81	3	0
Integrin beta (Fragment)	H3BM21_HUMAN	H3BM21	3	0
Corticosteroid-binding globulin (Fragment)	G3V4V7_HUMAN	G3V4V7	2	0
Protein mono-ADP-ribosyltransferase PARP6 (Fragment)	H3BUQ6_HUMAN	H3BUQ6	2	0
Insulin-like growth factor-binding protein complex acid labile subunit	ALS_HUMAN	P35858	2	0