

# 1 Focusing on Patient-outcome performance 2 measures of Active and Passive Implants – A 3 Systematic Review

4 Jana Stucke<sup>¶1\*</sup>, Elinor Tzvi-Minker<sup>¶1</sup>, Andreas Keck<sup>¶1</sup>

5 <sup>1</sup> Syte Institute, Hamburg, Hamburg, Germany

6

7

## 8 Abstract

### 9 Motivation

10 Active implantable electronic medical devices are used in different fields of medicine, in  
11 particular cardiology and neurology. Several papers have been published over the years  
12 comparing the technical performance of implants between leading manufactures. However, no  
13 such comparison has been done with respect to “Patient-Reported Outcomes“ (PROs) for most  
14 implant types, despite its importance in evaluating the quality of a medical device. With the  
15 recent update of the European Union’s (EU) regulation on public procurement towards value-  
16 based medicine, it has become beneficial for manufacturers to focus more on PROs to  
17 differentiate their products in order to create a marketing leverage. Most importantly,  
18 investigating PROs can assist shared decision-making, support pharmaceutical labelling claims  
19 and influence healthcare policy and practice. Due to this the review aims to showcase the lack

20 of PRO comparisons between implant manufacturers across different medical fields and its  
21 impact on patients and surgeons.

## 22 Methods

23 A literature search was conducted for active and passive implant performance comparisons in  
24 the area of implantable cardioverter-defibrillator (ICDs), deep brain stimulation (DBS),  
25 cochlear implants (CIs) and intraocular lenses (IOLs). The search focused on the availability  
26 of manufacturer comparisons with regards to PROs. A total of 640 papers from 2000 until 2022  
27 were screened in detail for the search term “patient reported outcomes” for the different implant  
28 types. Next, we analyzed the results by tagging papers based on the specific topics they  
29 investigated in their study to enable a cross-comparison. We noted whether the implant  
30 manufacturers were mentioned as well as whether a manufacturer comparison was done.  
31 Studies were also evaluated based on the number of patients included.

## 32 Results

33 A total of 38 papers were identified for ICDs, 31 for DBS, 68 for IOLs and 34 for CIs.  
34 50% of the papers for IOL focused on PROs and 22% and 14% for CIs and DBS, whilst  
35 mentioning the manufacturers. No papers dealing with PROs could be identified for ICDs.  
36 Manufacturer comparison was not attempted by any of the reviewed papers, despite implants  
37 such as CIs and DBS having quite a significant impact on the quality of life.

## 38 Conclusions

39 There is an urgent need for clinical studies which focus on PRO comparisons between implants  
40 of different manufacturers, to not only provide physicians and patients with critical information  
41 that informs their decision prior to implantation, but also to increase the competition between  
42 manufacturers, thus, fostering innovation. The former would allow physicians to recommend

43 the most suitable implant for the patient. In addition, this will drive manufacturers towards

44 PRO focused improvements.

45

## 46 Introduction

47 The use of implantable active and non-active medical devices has increased dramatically in the  
48 last few decades. Due to advancements in technology and especially Artificial Intelligence  
49 (AI), current state-of-the-art devices can treat conditions that have not been treatable up until  
50 now before. These advancements have led the highly competitive medical manufacturing  
51 industry to differentiate their products by demonstrating product value beyond the traditional  
52 measures of clinical safety and efficacy (Curran, 2018; Squitieri et al., 2017), through patient-  
53 reported-outcomes (PROs).

54 A PRO is defined as a report of the status of the patient's health condition, by the patient itself  
55 or their caregiver or surrogate responder, without prior interpretation (Eton et al., 2014; U.S.  
56 Food and Drug Administration, 2009; European Medicines Agency, 2019). It classifies a range  
57 of different, patient-related concepts, including personal reports of health status, symptoms,  
58 and health-related quality of life (QoL, Calvert et al., 2013). PROs allow for shared decision  
59 making between practitioner and patient, which makes them a valuable marketing tool for  
60 medical device manufacturers.

61

62 One sector within the medical device industry, which may profit most from the use of PROs  
63 are medical implants. Passive implants have been used since the mid 1950's in the form of  
64 breast implants and quickly been followed by active implants, such as pacemakers in 1958.  
65 Nowadays numerous passive and active implants from head to toe exist, from dental to hip  
66 implants as well as cardiac defibrillators (ICDs) and Cochlear implants (CIs). It is predicted  
67 that the global active implantable medical device market will increase its CAGR by 7.7%  
68 (Market Data Forecast) by 2026. With personalised medicine gaining more importance due to  
69 the rise of AI, medicine in general has become more customer centric. Patient Reported  
70 Outcomes (PROs), which assess the impact of a medical treatment or intervention (Rothman

71 et al., 2007), becomes a decision factor for surgeons and patients alike. This is particularly true  
72 for implants as they require an intervention and, depending on the implant, most often cannot  
73 be easily replaced.

74

75 For years, studies have been conducted comparing the technical features of different active and  
76 passive implant manufacturers in different medical fields (Saad et al., 2002; Semmler et al.,  
77 2021; Mens 2007; Plontke et al. 2018; Bon et al, 1997; Nagy et al., 2011). In particular,  
78 transcatheter pacemakers and ICDs have been investigated, and the focus of these studies was  
79 mainly on lead malfunctions and battery longevity (Ipp, 2021; Hauser et al, 2021, De Meester  
80 and Gilles, 2001; Narayanan et al., 2021, Pokorney et al., 2014). However, studies performing  
81 outcome-based manufacturer comparisons are rare. This is true for most implant types apart  
82 from breast implants, which are commonly used for plastic surgery. Here, a vast number of  
83 publications comparing manufacturers can be found (Niechajev et al., 2007; Yoon and Chang,  
84 2020; Henderson et al., 2015). However, active implants may be an intervention with a more  
85 drastic impact on a patients' QoL. The implantation of CIs, for example, requires the insertion  
86 of an electrode array into the cochlea, whilst deep brain stimulation (DBS) technology requires  
87 an accurate placement of the leads in the brain and a personalization of the stimulation  
88 parameters according to the severity of the neurological symptoms. Thus, it is of critical  
89 importance, especially in these particular areas of active implants to: (1) report systematically  
90 on PROs and (2) perform objective manufacturer comparisons that could guide patients and  
91 surgeons alike in their decision-making process.

92

93 In this review, we scanned the literature for studies of both active and passive implants that  
94 report patient outcomes. In the area of active implants, we focused on implanted cardiac  
95 defibrillators (ICDs), cochlear implants (CIs) and deep brain stimulation (DBS), whereas for

96 passive implants we focused on intraocular lenses (IOLs). The latter was chosen due to its  
97 similarity to CIs in affecting sensory perception, and thus PRO. Note that these are exemplary  
98 passive and active implants, and there are many more medical implants that could be  
99 investigated in future work, such as artificial knees and hips as well as leadless and transvenous  
100 pacemakers. The purpose of this review is to demonstrate the availability of manufacturer  
101 information in different active and passive implants and to stress the importance of performing  
102 comparisons of PROs in the different medical fields.

103

## 104 **Methods**

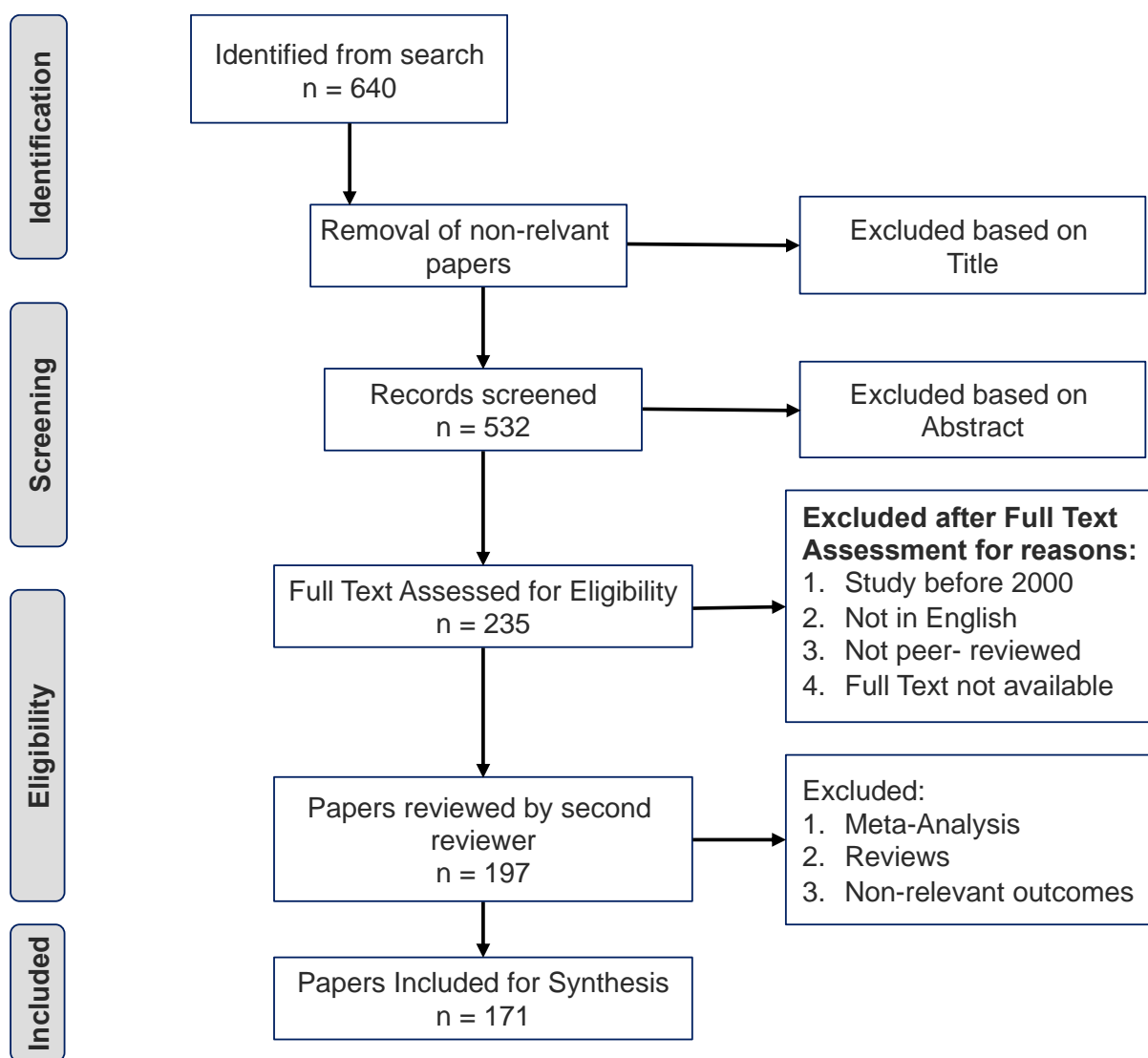
### 105 **Search Strategy**

106 A structured literature search was conducted using both google scholar and PubMed. The  
107 search strategy comprised searching for free-text terms “patient reported outcomes”, combined  
108 with the different implanted devices: “ICD”, “Cochlear Implant”, “intraocular lenses” and  
109 “deep brain stimulation”. An initial search found that PubMed showed less relevant hits than  
110 Google Scholar and the hits found in the former matched those found on Google Scholar. To  
111 this end, two independent reviewers (ETM, JS) scanned the first 150 most relevant (according  
112 to Google Scholar relevance algorithm) hits. We selected all papers published after 2000 in  
113 peer-reviewed journals. All reviews and commentary articles were discarded.

114 The literature search was last updated 22nd February 2022. The search targeted published  
115 research in scholarly journals, conference proceedings and workshop reports that assesses  
116 active or passive implants on a technical or outcome-based basis.

### 117 **Selection Process**

118 Titles, abstracts, and full articles were subsequently screened by reviewer 1 [JS] applying the  
119 inclusion and exclusion criteria (Figure 1). Publications meeting the inclusive criteria, were  
120 reviewed a second time by an additional reviewer [ETM]. Figure 1 illustrates the process.



121

122 Figure 1 Literature Inclusion Flowchart

123

## 124 Data Extraction and analysis

125 Data was extracted from the included papers in a matrix. The data extraction was mainly done  
126 by reviewer 1 [JS] and later re-examined by reviewer 2 [ETM]. The extracted data was

127 categorised and summarised in a matrix and later exported into tables and graphs. The data  
128 matrix is provided for a convenient workflow in Microsoft Excel (version 16.16.5) and can be  
129 found in the Appendix.

130

## 131 Results

132 The following section presents a summary of the extracted data from 171 included studies  
133 investigating PROs of active and passive implants for the areas of neurology, cardiology, and  
134 otolaryngology. Specifically, we focused on the following devices: implanted cardiac  
135 defibrillators (ICDs), cochlear implants (CIs) and deep brain stimulation (DBS), whereas for  
136 passive implants we focused on intraocular lenses (IOLs).

### 137 Bibliographic Overview

138 Table 2 shows the number of total publications considered after the reviewing process. Here,  
139 we included publications from peer-reviewed journals only. Conference proceedings,  
140 workshop publications or case studies were not considered. The Journal of American College  
141 for Cardiology (n = 9), Otology & Neurotology (n = 4), Journal of Cataract & Refractive  
142 Surgery (n = 22) and Brain (n = 4) represented the journals with most included publications for  
143 ICDs, CIs, IOLs and DBS respectively.

144 *Table 1 Bibliographic overview of the included studies*

<b>Implant Type</b>	<b>Number of papers before filtering</b>	<b>Number of papers after filtering</b>
ICD	47	38



DBS	40	31
IOL	89	68
CI	59	34

145

146 The included papers were published during the following years for ICDs: 2012 (n = 9), 2015  
147 (n = 4) and 2005 (n = 4); IOLs: 2017 (n = 13), 2021 (n = 12) and 2019 (n = 10); DBS: 2010 (n  
148 = 6), 2006 (n = 4) and 2012 (n = 4) and CIs; 2021 (n = 16), 2020 (n = 16) and 2019 (n = 3).  
149 This shows that the general interest in PROs is clearly growing for CI and IOLs when compared  
150 to DBS and ICDs.

## 151 Sample Sizes

152 The total number of subjects in the included studies varied with implant type with the  
153 maximum, minimum and average patient number for each implant being depicted in Table 2.  
154 Note, that for ICDs eight studies were retrospective, analysing very large patient databases  
155 ranging from 1,820 to 38,912 patients. Large retrospective studies were also performed in the  
156 other fields. For DBS, one study had over 5,000 participants, and for CI two studies had more  
157 than 1,500 participants. For IOLs, only three studies had over 500 participants. This results in  
158 a high average of participants for ICDs. The other implant types had on average between 117  
159 and 237 patients, which can be considered quite high and reflecting the quality of the paper  
160 considered in this review. Only DBS and IOL included cohorts of less than 12 subjects which  
161 may be due to a specific focus on aetiology.

162 *Table 2 Maximum, Minimum and Average Number of Patients used in the Literature for ICDs, CIs, DBS and IOLs*

Implant Type	Maximum Number of Patients	Minimum Number of Patients	Average Number of Patients
ICD	38,912	12	3,142
CI	2,735	19	180
DBS	5,311	3	237
IOL	710	6	117

163

164 **Summary of findings in the Literature**

165 A distribution of the papers according to outcome, as tagged in Table 3, is shown in Figure 2 to Figure  
 166 5. This was done for ease of comparison across implant types. Here, papers were tagged based  
 167 on their overarching topic for ease of cross-comparison in the different medical fields.

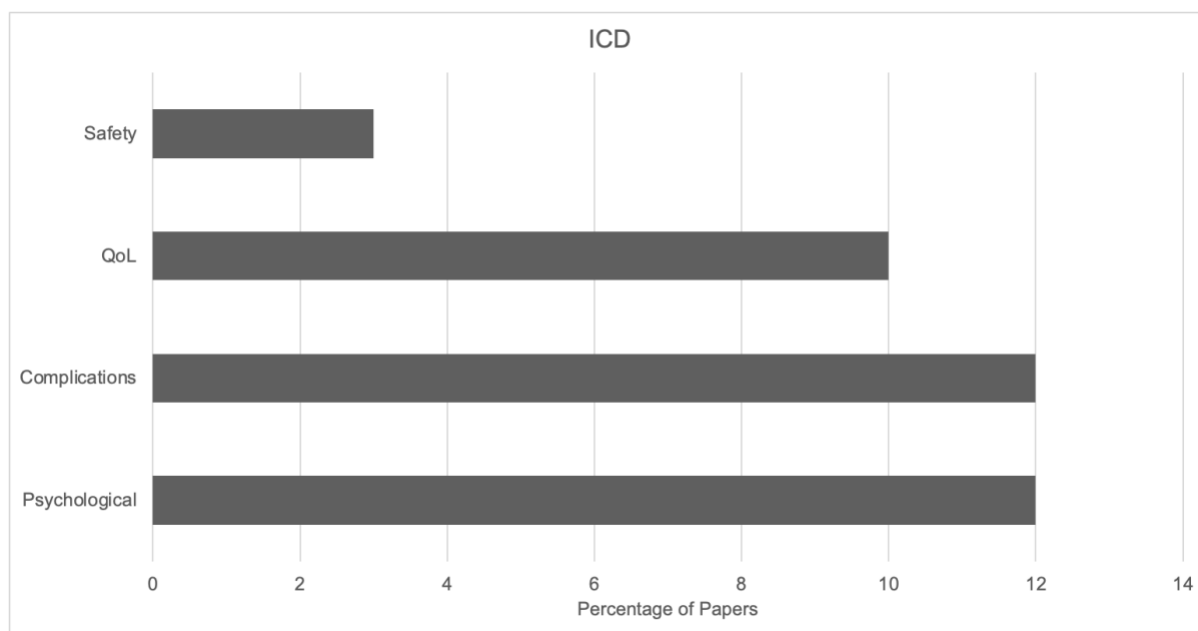
168 *Table 3 Legend of the taxonomy used for study tagging*

<b>Overarching Term</b>	<b>Tagging of papers based on</b>
Safety	Safety of the implant as defined by the authors
QoL	“Quality of Life” directly mentioned in the text or PRO assessed as QoL measure
Complications	Side effects as well as mortality
Psychological	Anxiety, Fear, Depression

Effectiveness	Effectiveness of the implant to treat the patient
Cognitive Improvement	Any type of cognitive ability that improved following implantation
Rehabilitation	Studies focusing on best practices for post-surgery rehabilitation
Performance	Patients' improvement in test scores
Satisfaction	Patient satisfaction with the outcome
PRO	A clear statement of Patient Reported Outcomes in the text
Comparison hearing ability criteria	Only used for CIs. Evaluation of the tests to judge whether an implantation was beneficial

169

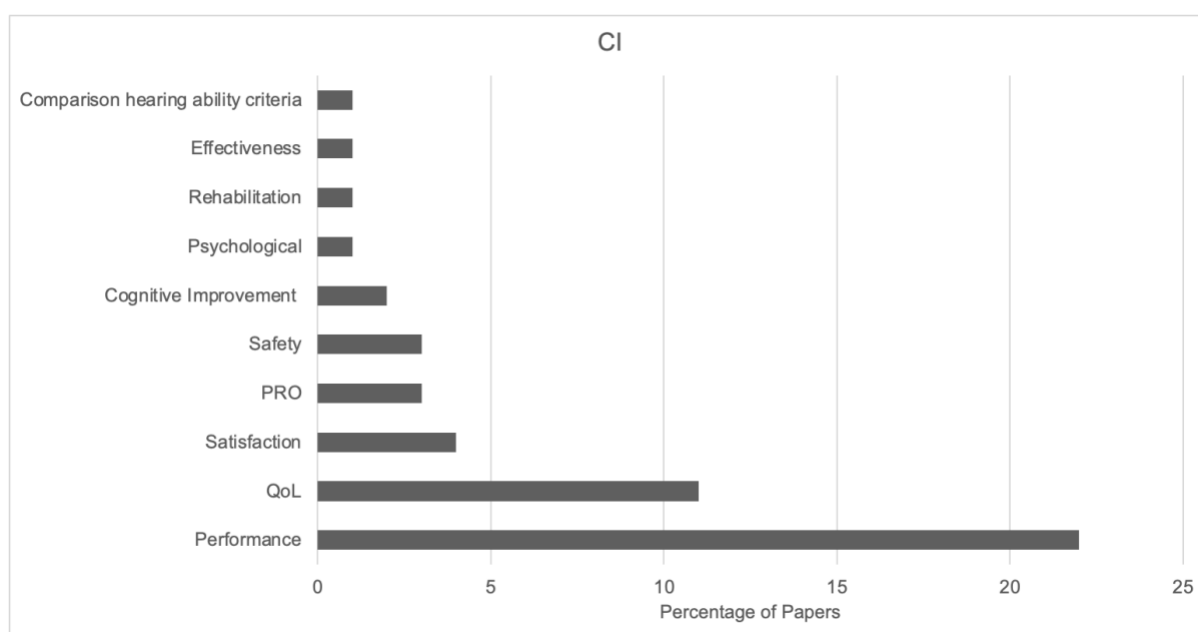
170 The results show that most papers evaluating PROs for ICDs deal with the psychological effect  
 171 on the patient, as well as the associated complications of the implantation. We can therefore  
 172 conclude that these outcomes serve as most significant in this medical field. Several papers (n  
 173 = 10) also investigated QoL as the main outcome, which is tightly knit to psychological  
 174 outcomes.



175

176 *Figure 2 Occurrence of the created taxonomy within the screened ICD studies*

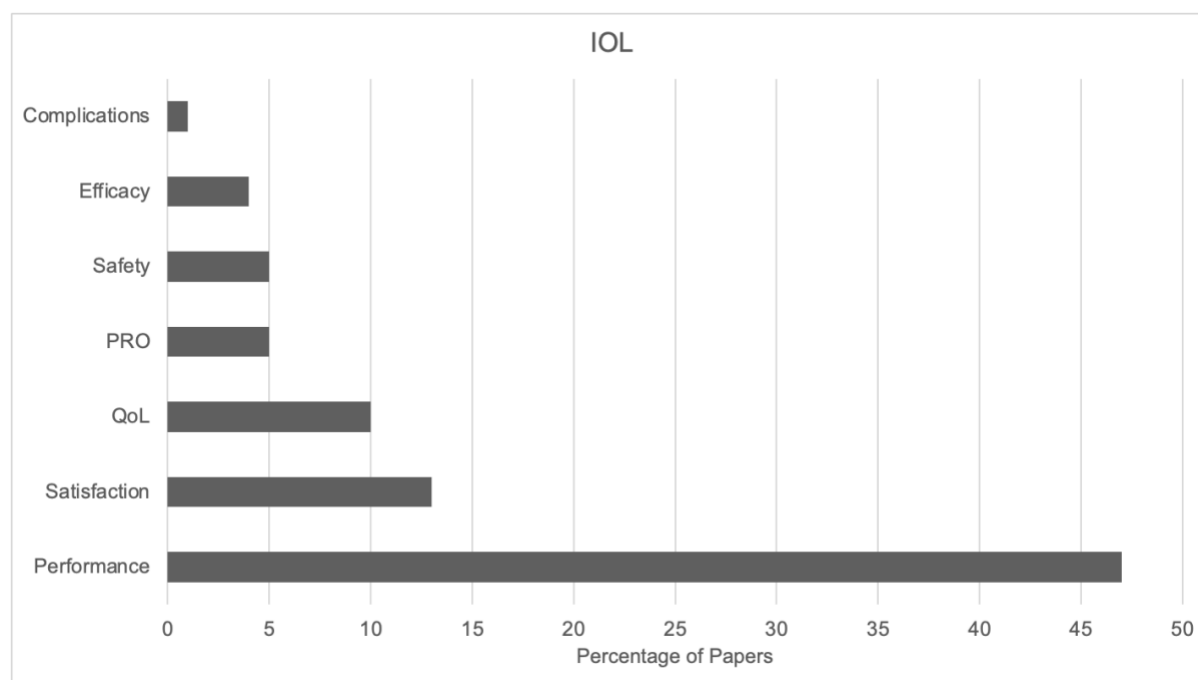
177 For CIs the distribution of topics is less balanced than for ICDs. Here, there is a heavy focus  
178 on the patient's performance, in particular speech and hearing perception scores. These scores  
179 reflect how well the patient functions with the implant and serve as a comparison to the pre-  
180 operative state, thus, can be seen as closely related to QoL. PROs and satisfaction played only  
181 a minor role in the research.



182

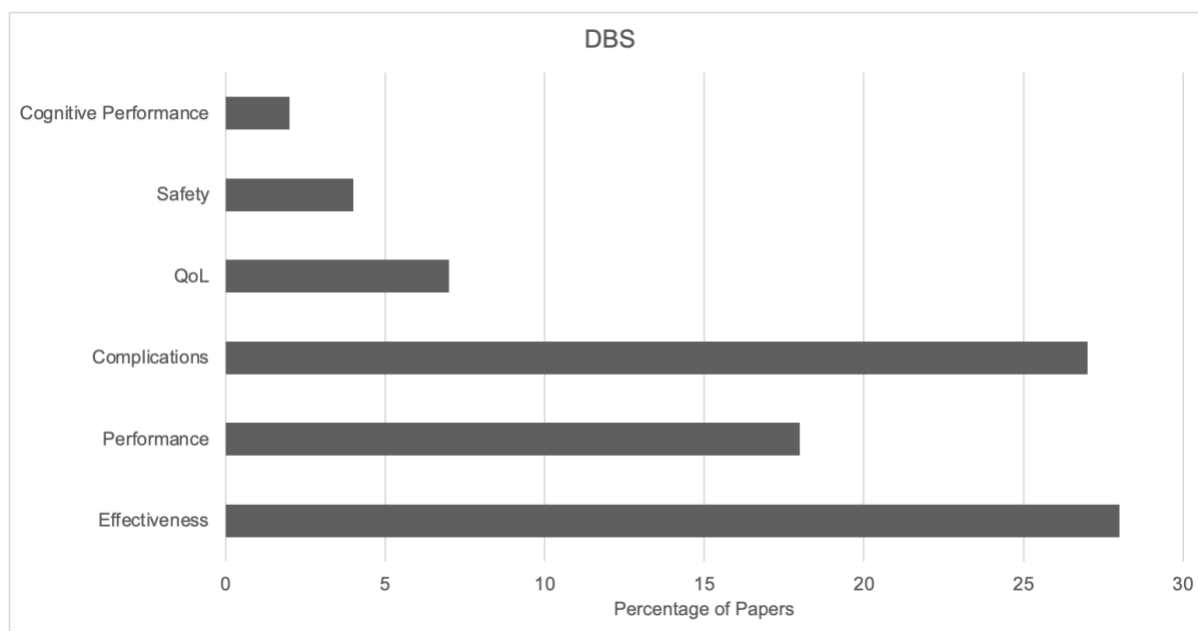
183 *Figure 3 Occurrence of the created taxonomy within the screened CI studies*

184 Figure 4 shows the distribution of outcomes investigated for IOLs. As for CIs, most studies  
185 deal with performance, with satisfaction and QoL lagging much behind. This distribution is  
186 very different to the more balanced distribution of outcomes for ICDs.



187  
188 *Figure 4 Occurrence of the created taxonomy within the screened IOL studies*

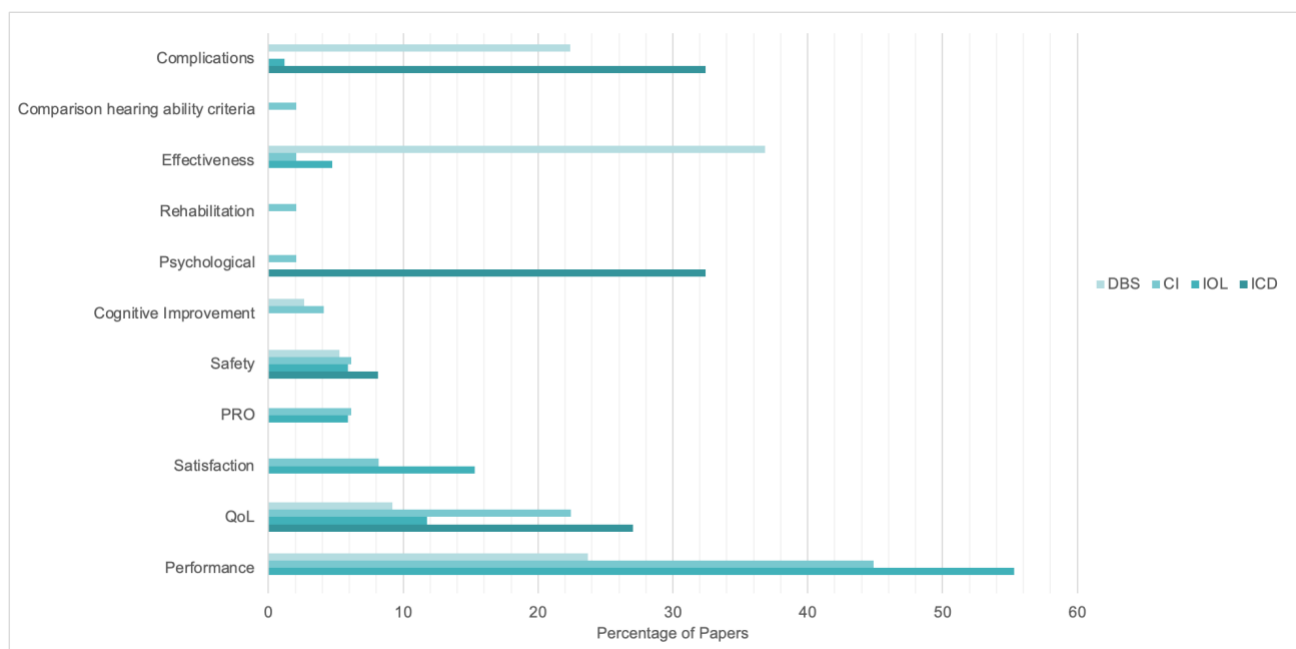
189 The outcome distribution for DBS is depicted in Figure 5. It can be seen that over 35% of the  
190 papers are addressing the effectiveness of DBS to treat different conditions. Performance,  
191 which means in this case, how well the patients improved their symptoms in each indication  
192 (Parkinson's disease, Dystonia, Essential tremor, Obsessive compulsive disorder and  
193 depression) following implantation, and complications are often mentioned alongside  
194 effectiveness and are forming the second and third most mentioned topics in the DBS studies  
195 reviewed here. Only very few studies evaluated QoL directly, though effectiveness of the  
196 therapy is also an indirect indication of QoL.



197

198 *Figure 5 Occurrence of the created taxonomy within the screened DBS studies*

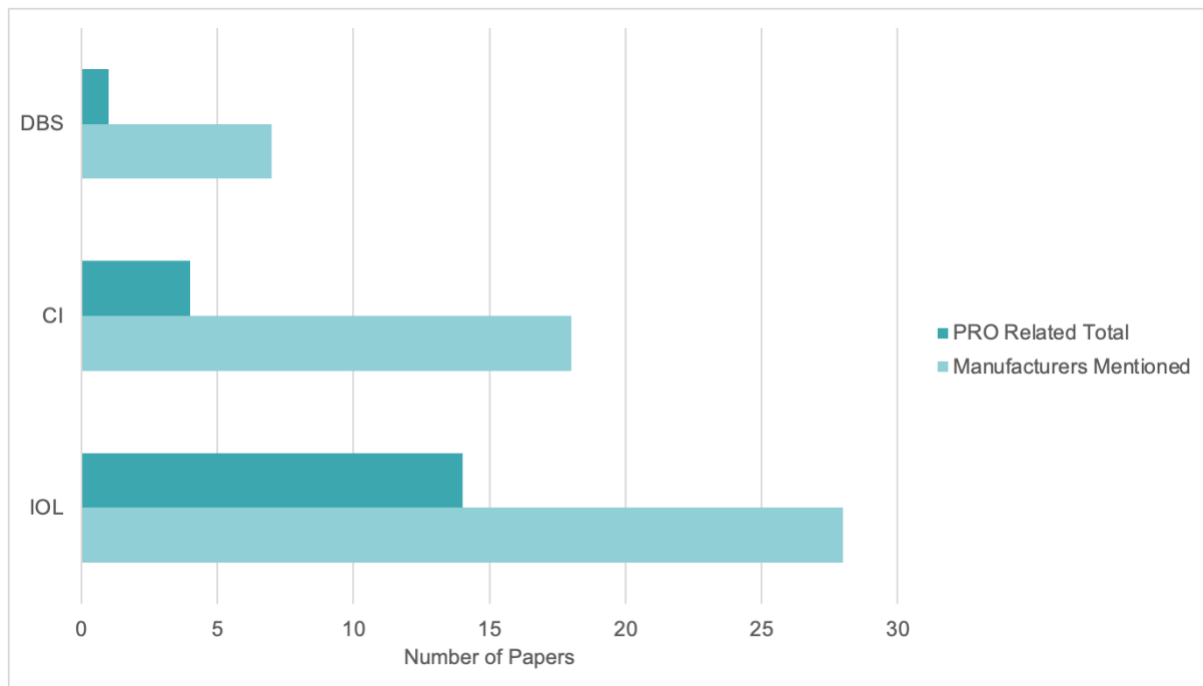
199 Figure 6 shows a cross-comparison of outcomes for the different implant types. We found that  
200 the focus of ICD papers lies heavily on the psychological impact on the patient and  
201 complication rate, whereas CI and IOL papers are mainly addressing performance criteria. DBS  
202 studies are mostly concerned with the effectiveness of treatment compared to other forms of  
203 therapies. Interestingly, there are relatively more papers focusing on QoL for ICDs than for  
204 CIs, DBS and IOLs, despite the latter directly impacting perception (visual, hearing, motor). It  
205 is also surprising that double the amount of papers on IOLs focus on patient satisfaction than  
206 for CIs. Here, a more balanced result would have been expected, in particular, as CI surgery  
207 affects hearing perception and similar to IOLs directly affects sensation. The same is true for  
208 DBS, which is used for alleviating neurological symptoms in Parkinson's disease and  
209 depression. There as well, one would expect more studies investigating patient satisfaction.  
210 Generally, as these disorders have a strong effect on quality of life, more papers on the  
211 assessment of QoL would have been expected.



212

213 *Figure 6 Occurrence of the taxonomy across different implant type studies*

214 Additionally, we investigated how many studies dealing with either satisfaction, PRO or QoL,  
215 also specifically mention the implant manufacturer. This analysis was done for CIs, IOLs and  
216 DBS only, as no such data were available for ICDs. The results are depicted in Figure 7. Only  
217 50% of IOL studies dealing with PROs also mention the implant manufacturer with the number  
218 decreasing for CIs and DBS. Here only 22% and 14% of papers also mention the implant  
219 manufacturer. Despite the ability to perform cross-manufacturer comparisons of PROs, none  
220 of those studies reported such comparisons. Considering that all three implant types  
221 significantly influence patients' quality of life this finding is particularly surprising. Clearly,  
222 manufacturer comparisons are not straight-forward as they strongly depend on inter-individual  
223 parameters which are perhaps difficult to account for. However, we argue that such  
224 comparisons can be done when (1) a large number of patients are considered such that inter-  
225 individual variability is negligible and (2) attempts to match the patients in terms of condition,  
226 age, sex and other influencing factors have been made.



227

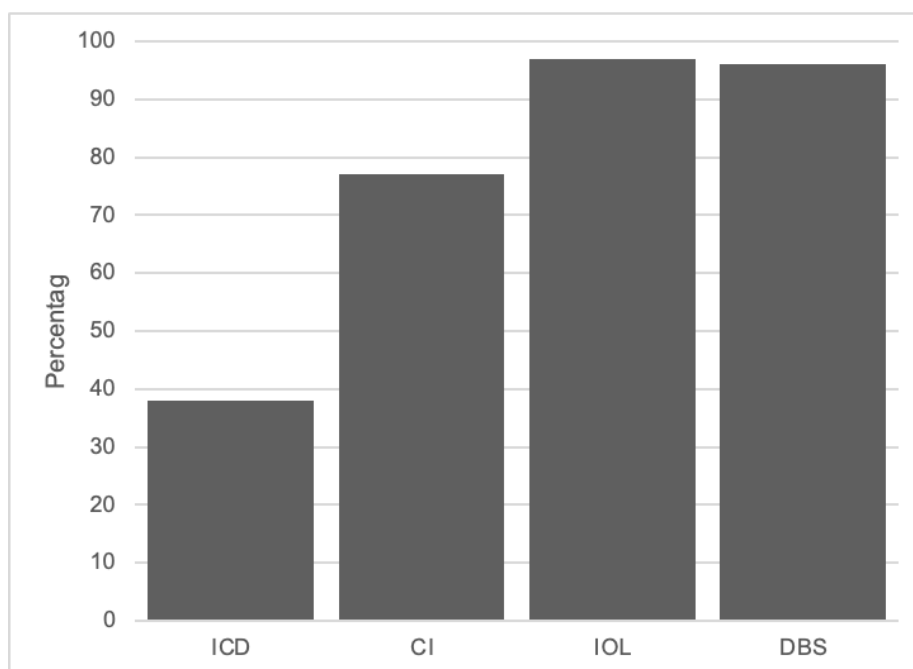
228 *Figure 7 Number of papers mentioning the manufacturers and dealing with some form of PRO*

229

## 230 Discussion

231 In this scoping literature review, we found that the majority of papers across implant types were  
232 mainly focusing on the performance of the device. The next theme that the studies in this review  
233 focused on is QoL assessment. Depending on the implant type, studies focused on different  
234 aspects of the implanted devices. Our scoping review also demonstrates that manufacturers of  
235 implanted devices were mentioned >95% of the time for DBS and IOLs papers, but only 75%  
236 of the time for CIs and <40% of the time for ICDs (see Figure 8).





237

238 *Figure 8 Percentage of reviewed publications mentioning the manufacturer*

239 However, only 50% of the papers for IOL dealing with PROs and 22% and 14% for CIs and  
240 DBS respectively, mentioned the manufacturer in the context of PROs. This is quite surprising  
241 as patients, manufacturers and medical professionals alike should be interested in the  
242 comparison of implants across manufacturers to be able to make informed decisions when  
243 choosing a specific device. This is particularly relevant for implants that directly affect sensory  
244 perception, whether or not they stimulate the brain directly. CIs for example, are often  
245 implanted in children, thus the specific implant choice can significantly affect patient's quality  
246 of life for many years, as well drive cognitive, emotional, and social development (Humphries  
247 et. al., 2012; de Almeida et. al., 2015). Importantly we note that none of the papers we present  
248 in this scoping review attempted to perform a direct comparison amongst manufacturers with  
249 regards to QoL, despite the fact that data are available, sometimes within one centre, to perform  
250 such a comparison. As in all reviews, the selection of search terms strongly influences the  
251 spectrum of results achieved. It was critical to choose a very specific search term that could  
252 apply for all indications, to enable comparisons of outcomes across these different medical  
253 areas. Thus, it is possible that different search terms in each indication specifically would have

254 yielded other publications that perform comparisons between manufacturers. However, a  
255 heuristic search we performed for CI, using many different search terms, did not yield any  
256 papers that present manufacturer comparisons.

257 Patients and medical practitioners alike would greatly benefit from easily accessible data and  
258 manufacturer comparisons with regards to PROs to make informed decisions prior  
259 implantation. Clearly, these comparisons are highly subjective and vary greatly, depending on  
260 the individual tested, their medical history as well as the skills of the surgeon and the  
261 rehabilitation process following implantation. Yet, this should not prevent the scientific  
262 community from attempting to perform such comparisons for the greater benefit of the medical  
263 community, patients and physicians alike. Also manufacturers should be more open to allow  
264 those types of comparisons as their product would be able to benefit greatly as it allows for  
265 constant improvements. Additionally, with sufficient studies and cohort sizes individual  
266 differences would eventually cancel out, thus, enabling informed implant choices and  
267 recommendations.

268 Based on the publishing date of the reviewed literature, we may conclude that studies  
269 concerning PROs become more relevant especially for CIs, where most of the papers were  
270 either published in 2021 or 2020. This testifies for the increased interest of the otolaryngology  
271 community in addressing this type of outcome in CI. Similarly, for IOLs, most papers were  
272 published in 2017 and 2021, suggesting a similar trend in this field. However, this is not the  
273 case for papers on DBS and ICDs. For DBS, most papers are 12 to 16 years old and for ICDs,  
274 most papers are 10 to 17 years old. In both fields, the functionality of the sensory system may  
275 have a smaller priority in comparison to survival (ICD) and regaining of motor function in  
276 movement disorder patients (DBS). The recent advancements in the field of DBS to treat  
277 mental health conditions such as Depression and Obsessive Compulsive Disorders

278 (Baldermann et al., 2021; Van Westen et al., 2022; Li et al., 2021; Fenoy et al., 2022; Scangos  
279 et al., 2021; Youssef et al., 2021) might drive the field to take a closer look at PROs.  
280 Based on the above, we suggest that future research should focus more on PRO based  
281 manufacturer comparisons for active as well as passive implants, to allow patients and surgeons  
282 to make informed decisions. Further research should also be conducted on the identification of  
283 appropriate tests to rate patient satisfaction.

## 284 Conclusions

285 In this review, we conducted a literature search on the availability of manufacturer comparisons  
286 for outcome-based parameters for active and passive implants. This was done as PROs become  
287 more important to patients and surgeons when choosing from a selection of implants by  
288 different manufacturers. We found that using the search term ‘patient reported outcomes’ led  
289 to a variety of results, most of them focusing on the performance of the implant, using objective  
290 measurement techniques. Within the papers addressing QoL, PROs and patient satisfaction,  
291 less than 50% mentioned the implant manufacturer. Therefore, we suggest that there is a gap  
292 in published research for active implants and more research must focus on manufacturer  
293 comparisons based on PROs. This is particularly important for medical implants in younger  
294 patients as in the CI example since the influence on cognitive, social, and emotional processing  
295 has a significant impact on their development. This will lead to an informed decision-making  
296 process by patients and surgeons to guarantee the best long-term outcomes. It also fosters  
297 innovation as manufacturers are forced to continuously improve their products.

298

299

300

301

## 302 Acknowledgments

303 The authors state no conflict of interest. Syte receives financial compensation for consultation  
304 to Cochlear, MedEl and Abbott in the past.

305

## 306 References

307 De Almeida RP, Matas CG, Vieira Couto MI, de Carvalho ACM. *Quality of life evaluation in*  
308 *children with cochlear implants*. CoDAS. 2015; 27 (1).

309

310 Baldermann JC, Schüller T, Kohl S, Voon V, Li N, Hollunder B, Figeo M, Haber SN, Sheth  
311 SA, Mosley PE, Huys D, Johnson KA, Butson C, Ackermans L, van der Vlis TB, Leentjens  
312 AFG, Barbe M, Visser-Vandewalle V, Kuhn J, Horn A. Connectomic Deep Brain Stimulation  
313 for Obsessive-Compulsive Disorder. *Biological Psychiatry*. 2021; 90 (10): 678-688.

314

315 Calvert M, Blazeby J, Altman DG, Revicki DA, Moher D, Brundage MD. CONSORT PRO  
316 Group. *Reporting of patient-reported outcomes in randomized trials: the CONSORT PRO*  
317 *extension*. *JAMA*. 2013; 309(8): 814-822.

318 Curran J. *Medical Device Manufacturing in the US* (Industry Report 33451b). Retrieved  
319 August 2, 2018, from IBISWorld database.

320 De Meester A, Gilles PH. *ICD Malfunction Caused by Excessive Defibrillation Charge Time*.  
321 *Pacing and Clinical Electrophysiology*. 2001; 24: 518-519. <https://doi.org/10.1046/j.1460->

322 [9592.2001.00518.x](https://doi.org/10.1046/j.1460-9592.2001.00518.x)

- 323 Eton DT, Beebe TJ, Hagen PT et al.. *Harmonizing and consolidating the measurement of*  
324 *patient-reported information at health care institutions: a position statement of the Mayo*  
325 *Clinic*. Patient Relat Outcome Meas. 2014; 5:7e15.
- 326 European Medicines Agency. *Appendix 2 to the guideline on the evaluation of anticancer*  
327 *medicinal products in man - the use of patient-reported outcome (PRO) measures in oncology*  
328 *studies*. 2016; Available from: [https://www.ema.europa.eu/en/appendix-2-guideline-](https://www.ema.europa.eu/en/appendix-2-guideline-evaluation-anticancer-medicinal-products-man-use-patient-reported-outcome-pro)  
329 [evaluation-anticancer-medicinal-products-man-use-patient-reported-outcome-pro](https://www.ema.europa.eu/en/appendix-2-guideline-evaluation-anticancer-medicinal-products-man-use-patient-reported-outcome-pro). Accessed:  
330 25.02.2022.
- 331 Fenoy AJ, Quevedo J, Soares JC. *Deep brain stimulation of the “medial forebrain bundle”: a*  
332 *strategy to modulate the reward system and manage treatment-resistant depression*. Mol  
333 Psychiatry. 2022; (27): 574–592.
- 334
- 335 Bon GG, Von Mensdorff-Pouilly S, Kenemans P, van Kamp G J, Verstraeten RA, Hilgers J,  
336 Meijer S, Vermorken JB. *Clinical and technical evaluation of ACS™BR serum assay*  
337 *of MUC1 gene-derived glycoprotein in breast cancer, and comparison with CA 15-3*  
338 *assays*, *Clinical Chemistry*. 1997; 43 (4): 585–593.
- 339
- 340 Hauser RG, Casey SA, Gitter CB. *et al.*. *Reliability and longevity of implantable*  
341 *defibrillators*. J Interv Card Electrophysiol. 2021; 62: 507–518.
- 342
- 343 Henderson PW, Nash D, Laskowski M. *et al.*. *Objective Comparison of Commercially*  
344 *Available Breast Implant Devices*. Aesth Plast Surg. 2015; 39: 724–732.
- 345 Hölbl M, Kompara M, Kamišalić A, Nemeč Zlatolas LJS. *A Systematic Review of the Use of*  
346 *Blockchain in Healthcare*. 2018; 10 (10): 470.

- 347 Humphries T, Kushalnagar P, Mathur G, Napoli DJ, Padden C, Rathmann C, Smith SR.  
348 *Language acquisition for deaf children: Reducing the harms of zero tolerance to the use of*  
349 *alternative approaches. Harm Reduction Journal. 2012; 16 (9).*
- 350 Ip J.E. *Premature battery depletion of EMBLEM subcutaneous implantable cardioverter-*  
351 *defibrillators. J Cardiovasc Electrophysiol. 2021; 32: 565– 567.*
- 352 Li N, Hollunder B, Baldermann JC, Kibleur A, Treu S, Akram H, Al-Fatly B, Strange BA,  
353 Barcia JA, Zrinzo L, Joyce EM, Chabardes S, Visser-Vandewalle V, Polosan M, Kuhn J, Kühn,  
354 AA, Horn A. *A Unified Functional Network Target for Deep Brain Stimulation in Obsessive-*  
355 *Compulsive Disorder. Biological Psychiatry. 2021; 90 (10): 701-713.*
- 356 Market Data Forecast. *Global Active Implantable Medical Devices Market Size, Share, Trends,*  
357 *COVID-19 Impact & Growth Analysis Report – Segmented By Product & Region - Industry*  
358 *Forecast (2021 to 2026). 2021; Available Online:*  
359 [https://www.marketdataforecast.com/market-reports/active-implantable-medical-devices-](https://www.marketdataforecast.com/market-reports/active-implantable-medical-devices-market)  
360 [market](https://www.marketdataforecast.com/market-reports/active-implantable-medical-devices-market). Accessed: 23.02.2022.
- 361
- 362 Mens, LHM. *Advances in Cochlear Implant Telemetry: Evoked Neural Responses, Electrical*  
363 *Field Imaging, and Technical Integrity. Trends in Amplification. 2007; 11(3):143-159.*
- 364
- 365 Nagy ZZ, Kranitz K, Takacs AI, Kovacs I, Knorz M C. *Comparison of Intraocular Lens*  
366 *Decentration Parameters After Femtosecond and Manual Capsulotomies. Journal of*  
367 *Refractive Surgery. 2011; 27 (8).*
- 368

369 Narayanan CA, Katcher B, Coleman S, Butts L, Homoud MK, Garlitski AC, Weinstock J,  
370 Link, MS, Madidas C. *Accelerated Battery Depletion in Subcutaneous Implantable*  
371 *Cardioverter-Defibrillators*. JACC: Clinical EP. 2021; 7 (6) 806–808.  
372  
373 Niechajev I, Jurell G, Lohjelm L. *Prospective Study Comparing Two Brands of Cohesive Gel*  
374 *Breast Implants with Anatomic Shape: 5-Year Follow-Up Evaluation*. Aesthetic Plastic  
375 Surgery. 2007; 31. 697 – 710.  
376  
377 Plontke SK, Kösling S, Rahne T. *Cochlear Implantation After Partial or Subtotal*  
378 *Cochleoectomy for Intracochlear Schwannoma Removal-A Technical Report*. Otol Neurotol.  
379 2018; 39 (3): 365-371.  
380  
381 Pokorney SD, Greenfield RA, Atwater BD, Daubert JP, Piccini JP. *Novel mechanism of*  
382 *premature battery failure due to lithium cluster formation in implantable cardioverter-*  
383 *defibrillators*. Heart Rhythm. 2014; 11 (12): 2190-2195.  
384  
385 Rothman ML, Beltran P, Cappelleri JC, Lipscomb J, Teschendorf B. Patient-Reported  
386 Outcomes: Conceptual Issues, Value in Health, 2007, 10 (2): S66-S75,  
387  
388 Saad EB, Saliba WI, Schweikert RA, Al-Khadra AS, Abdul- Karim A, Niebauer M J, Wilkoff  
389 BL. *Nonthoracotomy Implantable Defibrillator Lead Extraction:*  
390 *Results and Comparison with Extraction of Pacemaker Leads*. Pacing and Clinical  
391 Electrophysiology. 2003.  
392

- 393 Scangos, KW, Makhoul GS, Sugrue LP *et al.* *State-dependent responses to intracranial brain*  
394 *stimulation in a patient with depression.* Nature Medicine. 2021; 27: 229–231.
- 395
- 396 Semmler G, Barbieri F, Thudt K, Vock P, Mörtl D, Mayr H, Wollmann CG, Adukauskaite A,  
397 Pfeifer B, Senoner T, Dichtl W. *Long-Term Technical Performance of the Osypka QT-*  
398 *5® Ventricular Pacemaker Lead.* J. Clin. Med. 2021; 10: 639.
- 399
- 400 Squitieri L, Bozic KJ, Pusic AL. *The role of patient-reported outcome measures in value-based*  
401 *payment reform.* Value Health. 2017; 20 (6): 834–836.
- 402 U.S. Food and Drug Administration. *Patient-Reported Outcome Measures: Use in Medical*  
403 *Product Development to Support Labeling Claims.* 2009; Available from:  
404 [https://www.fda.gov/regulatory-](https://www.fda.gov/regulatory-information/search-fda-guidance-documents/patient-reported-outcome-measures-use-medical-product-development-support-labeling-claims)  
405 [information/search-fda-guidance-documents/patient-](https://www.fda.gov/regulatory-information/search-fda-guidance-documents/patient-reported-outcome-measures-use-medical-product-development-support-labeling-claims)  
406 [reported-outcome-measures-use-medical-product-](https://www.fda.gov/regulatory-information/search-fda-guidance-documents/patient-reported-outcome-measures-use-medical-product-development-support-labeling-claims)  
407 [development-support-labeling-claims.](https://www.fda.gov/regulatory-information/search-fda-guidance-documents/patient-reported-outcome-measures-use-medical-product-development-support-labeling-claims)  
408 Accessed: 23.02.2022.
- 409
- 407 Van Westen M, Rietveld E, Bergfeld IO, de Koning P, Vullink N, Ooms P, Graat I, Liebrand  
408 L, van den Munckhof P, Schuurman R, Denys D. *Optimizing Deep Brain Stimulation*  
409 *Parameters in Obsessive–Compulsive Disorder.* Neuromodulation: Technology at the Neural  
410 Interface. 2021; 24 (2): 307-315.
- 411 Youssef NA, Phung P, Patel RS. *Characteristics of patients who received deep brain*  
412 *stimulation in obsessive-compulsive disorder versus major depressive disorder.* Journal of  
413 Psychiatric Research. 2021; 136: 384-387.
- 414 Yoon S, Chang JH. *Short-term Safety of a Silicone Gel–filled Breast Implant: A Manufacturer-*  
415 *sponsored, Retrospective Study.* Plastic Reconstruction Surgery Global Open. 2020; 8 (5).