

1 **Meningococcal vaccination in adolescents and adults induces bactericidal activity against hyperinvasive**
2 **complement-resistant meningococcal isolates**

3

4 Milou Ohm¹, Janine J. Wolf¹, Debbie M. van Rooijen¹, Linda J. Visser¹, Willem R. Miellet^{1,2}, Rob Mariman¹,
5 Krzysztof Trzcinski², Anne-Marie Buisman¹, Fiona R.M. van der Klis¹, Guy A.M. Berbers¹, Mirjam J. Knol¹,
6 Nina M. van Sorge^{3,4,5}, Gerco den Hartog¹

7 1. Centre for Infectious Disease Control, National Institute for Public Health and the Environment (RIVM), Bilthoven, the
8 Netherlands

9 2. Department of Pediatric Immunology and Infectious Diseases, Wilhelmina Children's Hospital, University Medical
10 Center Utrecht, Utrecht, The Netherlands

11 3. Department of Medical Microbiology and Infection Prevention, Amsterdam UMC location University of Amsterdam,
12 Amsterdam, The Netherlands

13 4. Netherlands Reference Laboratory for Bacterial Meningitis, Amsterdam UMC location AMC, Amsterdam, The
14 Netherlands

15 5. Amsterdam Institute for Infection and Immunity, Infectious Diseases, Amsterdam, The Netherlands

16

17 **Keywords:** invasive meningococcal disease, hyperinvasive lineages, complement-mediated killing, clonal
18 complex, meningococcal vaccination

19 **Running title:** Killing of hyperinvasive meningococci

20 **Short summary:** Meningococcal isolates of hyperinvasive lineages are resistant to complement-mediated
21 killing but vaccine-induced antibodies effectively kill these invasive isolates.

22

23 **Corresponding author:** dr. Gerco den Hartog, Centre for Infectious Disease Control Netherlands, National
24 Institute for Public Health and the Environment (RIVM), Netherlands, gerco.den.hartog@rivm.nl

25 **Alternate corresponding author:** Milou Ohm, Centre for Infectious Disease Control Netherlands, National
26 Institute for Public Health and the Environment (RIVM), Netherlands, milou.ohm@rivm.nl

27 **ABSTRACT**

28 **Background**

29 Complement-mediated killing is critical in the defense against meningococci. During a recent outbreak of
30 invasive meningococcal serogroup W disease (IMD-W) in the Netherlands, the predominant isolates belonged
31 to clonal complex (cc) 11, which may suggest a role for cc11-associated traits in complement resistance. We
32 investigated complement resistance of invasive and carriage meningococcal isolates of different serogroups and
33 lineages. In addition, we investigated whether vaccine-induced antibodies can overcome resistance to
34 complement-mediated killing.

35 **Methods**

36 We analyzed IMD isolates (n=56) and carriage isolates (n=19) of different serogroups and clonal lineages in the
37 serum bactericidal antibody (SBA) assay using pooled serum from unvaccinated and vaccinated individuals.
38 Furthermore, we determined meningococcal serogroup W geometric mean titers (GMTs) and protection levels
39 with the routinely-used non-cc11 isolate and hyperinvasive cc11 isolates using individual serum samples from
40 adolescents and adults 5 years postvaccination.

41 **Results**

42 The hyperinvasive IMD isolates showed high variation in their resistance to complement-mediated killing when
43 pooled serum from unvaccinated individuals was used (median 96, range 2-1,536). When pooled sera from
44 vaccinated individuals was used, all isolates were killed. The minimum spanning tree revealed moderate
45 clustering of serogroup and cc, while complement resistance did not. While a significantly lower GMT was
46 observed against cc11 meningococcal serogroup W (MenW) compared to a non-cc11 MenW isolate in
47 vaccinated adults but not in adolescents, we found no differences in the proportion protected between these
48 isolates.

49 **Conclusions**

50 These data show that vaccine-induced antibodies are effectively inducing complement-mediated killing of
51 complement-resistant hyperinvasive and carriage meningococcal isolates.

52 INTRODUCTION

53 The Gram-negative diplococcus *Neisseria meningitidis* - also known as meningococcus - is a human-specific
54 bacterium that colonizes the upper respiratory tract (1). In rare cases, it behaves as an opportunistic pathogen (2)
55 causing invasive meningococcal disease (IMD) often presented as meningitis or sepsis (3). The reason why one
56 person is an asymptomatic carrier while another becomes severely ill remains largely unknown. IMD mainly
57 affects otherwise healthy individuals, although complement deficiencies and splenic dysfunction/asplenia are
58 known to predispose to IMD. In addition, individuals with these predispositions often show a reduced immune
59 response to vaccination (4, 5).

60 IMD has been endemic with several major outbreaks across the world (6). The most recent outbreak of IMD in
61 Europe was caused by serogroup W meningococci. Highest incidence rates were observed in the United
62 Kingdom and the Netherlands, but an increased number of IMD serogroup W (IMD-W) cases was observed in
63 most European countries. In the Netherlands, IMD-W incidence rates up to 1.2 per 100,000 were reported in
64 2018 – in contrast to rates below 0.05 per 100,000 before the outbreak in 2010-2014 – and an unusually high
65 case fatality rate of 26% was observed in 14-24 year-olds (7).

66 Characterization of IMD-W outbreak isolates showed a dominance of meningococci belonging to the
67 hyperinvasive clonal complex (cc) 11 (8). This lineage was also implicated in an outbreak among Hajj pilgrims
68 that started in 2000 and Hajj-associated outbreaks in the meningitis belt thereafter (9). Moreover, an IMD-W
69 outbreak in South America that emerged in 2003 and the IMD-C outbreak in Europe in early '00 were both
70 dominated by meningococci belonging to cc11 (10, 11). However, other lineages such as cc23 and cc41/44 also
71 contribute to epidemics and hyperendemic situations (12).

72 The first line of defense against meningococci is provided by the mucosal barrier. In the rare event of the
73 bacterium passing the mucosal barrier, the complement system is an important component of the innate immune
74 system that is able to quickly eliminate invading bacteria (13). The complement system plays a major role in
75 preventing IMD, exemplified by the fact that deficiencies in components of its terminal pathway are associated
76 with recurrent *N. meningitidis* infection. Complement can be activated by bacterial surfaces, however, many
77 bacterial pathogens including *N. meningitidis* have acquired mechanisms to evade complement-mediated killing.
78 For example, binding of factor H by the factor H binding protein (fHbp) inhibits activation of the alternative
79 complement pathway through C3 (14). Serogroup-specific antibodies can induce complement-mediated killing
80 of meningococci and overcome these pathogenic immune-evasion mechanisms (15). Antibodies against surface

81 proteins including porins may be acquired naturally following colonization and may add to bactericidal activity
82 of serum (16).

83 Although the importance of specific lineages is recognized in epidemics, little is known on how it relates to
84 resistance to complement-mediated killing. We aimed to assess whether IMD isolates with distinct
85 polysaccharide capsules and belonging to a variety of ccs differ in their intrinsic resistance to complement-
86 mediated killing using sera from unvaccinated individuals. Furthermore, we investigated to what extent
87 antibodies induced by a MenACWY-TT vaccine are able to overcome potential complement resistance of
88 hyperinvasive meningococcal isolates.

89 **METHODS**

90 **Isolate collection**

91 Invasive meningococcal isolates (n=56) were selected to represent diverse clinical backgrounds, serogroups and
92 lineages (Table 1). IMD is a notifiable disease in the Netherlands and invasive isolates are typed by the National
93 Reference Laboratory for Bacterial Meningitis (NRLBM), Amsterdam, the Netherlands. Isolates selected for
94 this study were collected between 2001 and 2018 and were serogrouped by Ouchterlony gel diffusion (17).
95 Clinical background information (Supplementary Table 1) was collected through the national surveillance
96 system for IMD in the Netherlands (18). Since MenA is not prevalent in the Netherlands, the selection was
97 restricted to serogroup C, W and Y. In addition, a diverse selection of meningococcal serogroup CWY and
98 nongroupable carriage isolates (serogrouped with Meningococcus Agglutination Sera [Oxoid®](19)) of varying
99 cc (n=19) were included from a carriage study among students performed in the Netherlands in 2018 (20) (Table
100 1).

101

102 **Serum bactericidal antibody assay**

103 The serum bactericidal antibody (SBA) assay was performed using pooled serum as well as individual sera and
104 baby rabbit complement as complement source (21, 22). The serum pools consisted of sera from 1)
105 unvaccinated adults and 2) adolescents and young adults five years after a single dose of the MenACWY-TT
106 vaccine (Supplementary Table 2) (23, 24). We determined the resistance to killing of invasive and carriage
107 isolates in the absence (serum pool 1) and presence (serum pool 2) of vaccine-induced antibodies. A detailed
108 description of the assay can be found in Supplementary Information. Briefly, all tested isolates were grown on
109 gonococcal (GC)-agar plates at 37°C and 5% CO₂ and harvested at exponential growth phase. The SBA titer was
110 determined by plating serial two-fold dilutions of serum on Colombia blood agar plates. When the SBA titer of
111 the serum pool fell below 4, i.e. the isolate was not killed in a serum dilution of 1:2, we considered the isolate to
112 be highly resistant to complement-mediated killing. If the titer exceeded the limit of quantitation (titer
113 $\geq 262,144$), i.e. the bacterium lacked resistance to complement-mediated killing entirely, we assigned a titer of
114 262,144. The SBA titer of the serum pool was assessed with the average of two independent experiments
115 performed in duplicate. When the two independent measurements differed by more than two dilutions,
116 additional replicates were performed in order to obtain a reproducible titer.

117 The individual sera from adolescents (n=54) and middle-aged adults (n=50) were collected five years after a
118 single dose of MenACWY-TT in two clinical studies (NL4518 and NL7735) (23). The sera were tested with the
119 default MenW non-cc11 target isolate (cc22, strain MP01240070) and the default MenW cc11 target isolate
120 (2160326) used in our laboratory for SBA assays. Additionally, we tested a randomly selected subset (n=22) of
121 sera from the adolescent cohort to determine the SBA titer against three additional serogroup W cc11 isolates to
122 explore the variation in resistance to killing among different isolates belonging to this specific cc (isolate #30,
123 isolate #35, isolate #49; Supplementary Table 1 and 3). The internationally accepted correlate of protection
124 (SBA titer ≥ 8) was used for analysis of the individual sera, with the bactericidal titer defined as the dilution of
125 sera that yielded $\geq 50\%$ killing after 60 minutes incubation (23-25). A value of 2 was assigned when the titer fell
126 below the cut-off of the assay (titer < 4).

127

128 **Phylogenetic analyses**

129 We used core genome multilocus sequence typing (cgMLST) to construct a minimum spanning tree in order to
130 explore possible phylogenetic relationships for invasiveness of various genetic lineages. Whole genome
131 sequencing (WGS) was performed for all *N. meningitidis* isolates included in this study. Genomic DNA was
132 extracted using Genelute Bacterial Genomic DNA kit (NA2120, Sigma). Libraries were prepared using Illumina
133 DNA prep kit (20018705, Illumina) and paired-end sequenced (2x150 bp) on an Illumina NextSeq platform
134 (Illumina), following the manufacturer's protocols. Read quality analysis and *de novo* assembly was performed
135 with the Juno-assembly v2.0.2 pipeline (25). Briefly, fastq quality assessment and filtering were performed
136 using FastQC and FastP. Genomes were assembled using SPAdes and curated with QUAST, CheckM and
137 Bbtools. Subsequently, isolates were typed with MLST v2.19.0 (26) as well as chewBBACA (v2.8.5) (27) for
138 the 1605 gene loci included in the Neisseria cgMLST scheme from pubMLST (28). cgMLST data were used to
139 construct a minimum spanning tree with GrapeTree (v2.1) (29). *In silico* capsule typing was performed as
140 described by Marjuki et al. (30).

141

142 **Statistical analyses**

143 Statistical analyses were performed using GraphPad Prism v9 and SPSS Statistics v28. Differences in log-
144 transformed SBA titers between serogroups for the different serum pools were tested with a mixed-effect

145 analysis for paired data with Sidak's correction for multiple comparisons. Differences in log-transformed SBA
146 titers between the different clinical manifestations were determined with a Kruskal-Wallis test with Dunn's
147 multiple comparisons correction. The interaction between serogroup and cc with log-transformed SBA titer as
148 dependent variable was investigated with a generalized linear model (GLM). We determined the geometric
149 mean titers (GMTs) per age group of the individual sera for serogroup-specific SBA titers. Differences between
150 age groups in log-transformed SBA titers of the individual sera were determined with a Wilcoxon matched-pairs
151 signed rank test for paired data using Pratt's method to account for tied values within a sample. Differences in
152 proportions of protected individuals following vaccination were determined by a Chi-square or Fisher's exact
153 test as appropriate. Differences between the GMT of a subset of individual sera for different MenW cc11
154 isolates were compared with a Friedman's ANOVA test with Dunn's multiple comparisons correction. A p-
155 value of <0.05 was considered statistically significant.

156 RESULTS

157 Description of selected isolates

158 Characteristics for all tested meningococcal isolates with details on the serogroup and source of isolation
159 including clinical background of patients for all invasive isolates are summarized in Table 1 (Supplementary
160 Table 1: data per isolate). For the collection of invasive isolates, the median age of patients was 45 years (range
161 0-79). Meningitis was the most commonly reported clinical manifestation (23/56, 41%). Invasive isolates
162 causing clinical manifestations such as pneumonia and arthritis were also included in the selection. Half of the
163 invasive isolates belonged to serogroup W (28/56, 50%) of which 18 (64%) and 6 (21%) belonging to cc11 and
164 cc22 respectively. The majority of MenC isolates belonged to cc11 (10/17, 59%), while there was no MenY
165 cc11 available for inclusion. Among MenY isolates, cc23 was the primary cc (6/11, 55%), followed by cc167
166 (2/11, 18%). Nongroupable isolates were identified among the carriage isolates.

167

168 Bacterial killing by pooled serum from unvaccinated and vaccinated individuals

169 We found a significant difference ($p < 0.0001$) in SBA titers against invasive isolates between the serum pools of
170 unvaccinated and vaccinated individuals (Figure 1A). In the presence of vaccine-induced antibodies, all isolates
171 (invasive and carriage) were killed. All carriage isolates except for one were killed by complement when
172 exposed to the pool of serum from unvaccinated individuals. For 7 out of 19 (37%) carriage isolates a titer
173 above the limit of quantitation (≥ 262144) was determined (Figure 1A). All isolates survived in presence of high
174 serum concentrations when active complement was absent. Seventeen out of 56 (30%) invasive isolates were
175 highly resistant to complement-mediated killing and survived in the presence of high serum concentrations from
176 unvaccinated individuals. The majority of resistant isolates belonged to serogroup W (13/17, 76%) which also
177 showed the lowest SBA GMTs, followed by MenY (Figure 1B). In contrast to MenW and MenY isolates, all
178 MenC isolates showed limited resistance against the pool of serum from unvaccinated individuals. A significant
179 difference was found between SBA titers determined with serum from unvaccinated individuals for carriage
180 isolates compared with invasive isolates that caused sepsis ($p = 0.02$) but not for isolates that caused meningitis,
181 pneumonia or arthritis or that resulted in death (Figure 1C). If the non-resistant nongroupable isolates were
182 excluded from the analyses, the significant difference for the clinical manifestation sepsis disappeared. No trend
183 regarding the age of the patient was observed among resistant isolates. To identify a possible relation between
184 complement resistance and ccs, data were plotted according to the isolate's cc (Figure 2). All ccs showed wide

185 variation in SBA titers in absence of vaccine-induced antibodies (Figure 2A), which reduced after vaccination
186 with no evidence for difference between ccs after vaccination (Figure 2B). GLM revealed that serogroup
187 ($p<0.001$) and cc ($p=0.011$) of invasive isolates associated with SBA titers in absence but not in presence of
188 vaccine-induced antibodies.

189

190 **Phylogenetics**

191 In order to explain the observed differences in complement resistance, we performed WGS and cgMLST of the
192 isolates. No apparent clustering was observed for the source of isolation (Figure 3A). Despite heterogeneity
193 within serogroups and ccs, several serogroups and cc subclusters in close genetic distance were observed
194 (Figure 3B). Although overall classes of SBA did not cluster (Figure 3C), the cgMLST analyses revealed
195 clustering of invasive MenW cc11 as well as cc22 isolates with medium to high resistance to killing, while
196 invasive MenC cc11 isolates clustered with low to no resistance to killing. Clustering for non-cc11 isolates
197 (including MenY isolates) was not revealed other than the already established separation based on serogroup.

198

199 **Serum bactericidal titers in vaccinated individuals**

200 To test the degree of individual protection (SBA titer ≥ 8) to cc11 MenW following vaccination, a MenW cc11
201 isolate and a MenW non-cc11 isolate were exposed to individual serum samples of adolescents and adults five
202 years after MenACWY vaccination. A slightly higher GMT ($p=0.03$) was detected against the MenW non-cc11
203 isolate compared to the MenW cc11 isolate in adults but not in adolescents (Figure 4). However, the proportion
204 of adults protected against both MenW isolates was similar (71% versus 66% with SBA titer ≥ 8 for the non-
205 cc11 isolate and cc11 isolate, respectively). In a randomly selected subset of adolescents ($n=22$), we found
206 either similar (isolate #35 and #49) or higher (isolate #30, $p=0.004$) GMTs to additionally tested MenW cc11
207 isolates in comparison to the non-cc11 isolate (Supplementary Table 3).

208 **DISCUSSION**

209 In this study, we determined the resistance to complement-mediated killing of hyperinvasive clinical
210 meningococcal isolates, and how this may be explained by the clonal complex. Our data showed that clinical
211 isolates more often show resistance to complement-mediated killing compared to carriage isolates. Vaccine-
212 induced antibodies overcome the resistance to killing of hyperinvasive meningococcal isolates. Hyperinvasive
213 lineages with a specific cc were found to be in close genetic relationship. Five years postvaccination, vaccine-
214 induced antibodies resulted in slight reduced SBA titers to MenW cc11 but not in a difference in the proportion
215 of individuals with a SBA titer above the protective cut-off of 8.

216

217 In the presence of vaccine-induced antibodies, all tested isolates belonging to hyperinvasive lineages were
218 killed. Since vaccination targets the polysaccharide capsule, which is largely independent of the clonal complex-
219 associated genes, we did not expect a link between virulence and ccs when vaccine-induced antibodies were
220 present. Epidemiological data previously suggested vaccine effectiveness against invasive isolates (31), of
221 which we now provide mechanistic proof. While some ccs are implicated in IMD, others are rarely invasive and
222 there is large heterogeneity between isolates belonging to the same cc. Within the invasive ccs, classes of SBA
223 titers did not cluster. Yet, MenW cc11 isolates showed high resistance to killing while MenC cc11 isolates did
224 not. The difference between serogroups might be explained by the colonization history of donors, with
225 naturally-acquired antibodies in the serum from unvaccinated individuals (due to historical circulation of MenC
226 in the Netherlands (32)) inducing bactericidal activity against MenC. Possibly, these antibodies – which might
227 be targeted against the capsule but also other surface antigens – overcome the resistance to killing. Furthermore,
228 it has previously been described that capsular polysaccharides are heterogeneous in their activation of the
229 alternative pathway of complement, which may contribute to differences between serogroups in pathogenesis
230 (33). Since isolates implicated in IMD also circulate through the population (34), it is not surprising that we also
231 found one carriage isolate (belonging to cc167) to be resistant to complement-mediated killing with pooled
232 serum from unvaccinated individuals.

233

234 Invasiveness of meningococci is thought to be determined – at least partly – by a combination of genetic
235 characteristics of both the bacterium and the host (35, 36). Some ccs are known to be overrepresented in disease
236 isolates, yet the STs itself are not necessarily involved in virulence. Virulence was previously found to be

237 associated with the combination of cell surface antigens and the polysaccharide capsule, which is an essential
238 antigen shielding the bacterium from host immunity but alone insufficient to confer full virulence (37). Evasion
239 strategies involve several virulence factors such as the polysaccharide capsule, as well as fHbp, PorA, PorB and
240 NspA next to some other molecules and factors involved in biofilm formation (13). In this study, although
241 capsule expression of our isolates was confirmed, altered capsule expression through phase variation affecting
242 complement sensitivity cannot be excluded. Furthermore, we used baby rabbit complement instead of human
243 complement and therefore we could not investigate the four mentioned proteins – all related to factor H binding
244 – above. Factor H binding protein – involved in regulation of the alternative pathway by inactivating C3
245 convertase - is species-specific and rabbit factor H does not bind to the surface of the meningococcal bacterium.
246 Nevertheless, resistance varied among the different tested lineages which could be due to the combination of
247 genes not reflected by the ST of each isolate (38) or other bacterial determinants such as genes involved in
248 bacterial metabolism that could play a role in invasiveness (39). A genome-wide association analysis might
249 reveal *N. meningitidis* pathogenicity genes, but our study was not powered for this type of analysis. Further
250 research into the link between ccs and virulence factors and the association with bactericidal activity might
251 elucidate how hyperinvasive meningococci evade the immune system.

252

253 We found a lower GMT in individual serum samples from adults (but not adolescents) to a cc11 isolate
254 compared to an unrelated non-cc11 isolate (Figure 3). However, the proportion protected did not differ and most
255 individuals unprotected (SBA titer <8) for the cc11 isolate were also found to be unprotected for the non-cc11
256 isolate. Additionally tested cc11 MenW isolates showed comparable titers in a subset of participants
257 (Supplementary Table 3). The waning of long-term seroprotection after MenACWY vaccination is different
258 between these age groups, as was previously studied in those individuals as part of a larger cohort (23).

259

260 This study has some limitations. Firstly, we used baby rabbit complement for the functional antibody assays and
261 thus we might have yielded higher titers in the SBA assay than we would have with human complement.
262 Furthermore, variation in the individual's complement component - known as the complotype – alters
263 complement activity of each individual thereby affecting disease risk (40). Secondly, we selected the isolates
264 based on characteristics such as age, sex, clinical manifestations, and diversity of ccs. The results cover diversity
265 in host-and genetic traits, but do not represent serogroup and lineage-specific epidemiology.

266

267 We conclude that vaccine-induced bactericidal antibodies allow bactericidal killing of a diverse set of clinically-
268 relevant serogroup C, W and Y (hyper)invasive meningococci. Our results underline the importance of use of a
269 meningococcal vaccination to provide protection against hyperinvasive lineages during an outbreak or
270 hyperendemic situation.

271 **NOTES**

272 **Funding**

273 This project has received funding from the European Union's Horizon 2020 research and innovation programme
274 under the Marie Skłodowska-Curie grant agreement [No. 835433], the work was supported by the Dutch
275 Ministry of Health, Welfare and Sport.

276

277 **Acknowledgements**

278 We thank all involved lab technicians and Boas van der Putten from the NRLBM for their contribution to
279 sample processing and analyses.

280

281 **Author contributions**

282 M.O. and G.d.H. conceived and designed the study. M.J.K and N.M.v.S. were involved in data collection.
283 G.A.M.B. and A.M.B. have supervised the longitudinal vaccination studies providing the serum samples. M.O.,
284 J.J.W. and D.M.v.R performed the serological analyses. L.V. and W.R.M., R.M. and K.T. contributed analytical
285 tools and were involved in the genetic analyses. M.O., L.V. and G.d.H. interpreted and verified the data and
286 made the figures. M.O. and G.d.H. and drafted the manuscript. All authors interpreted the data, critically
287 reviewed the manuscript, and approved the final version.

288

289 **Potential conflicts of interest**

290 K.T. received funds for an unrestricted research grant from GlaxoSmithKline (GSK) Biologicals SA,
291 consultation fees, fees for participation in advisory boards, speaking fees and funds for unrestricted research
292 grants from Pfizer, fees for participating in advisory boards and funds for unrestricted research grant from
293 Merck Sharp and Dohme (MSD), all paid directly to his home institution and all outside the submitted work.
294 N.M.v.S declares grants from GSK and MSD outside the submitted work. All other authors report no potential
295 conflicts of interest.

296 REFERENCES

- 297 1. Stephens DS. Biology and pathogenesis of the evolutionarily successful, obligate human
298 bacterium *Neisseria meningitidis*. *Vaccine*. 2009;27:B71-B7.
- 299 2. Moxon ER, Jansen VAA. Phage variation: understanding the behaviour of an accidental
300 pathogen. *Trends in microbiology*. 2005;13(12):563-5.
- 301 3. Caugant DA, Maiden MC. Meningococcal carriage and disease--population biology and
302 evolution. *Vaccine*. 2009;27 Suppl 2:B64-70.
- 303 4. Balmer P, Falconer M, McDonald P, Andrews N, Fuller E, Riley C, et al. Immune response to
304 meningococcal serogroup C conjugate vaccine in asplenic individuals. *Infection and immunity*.
305 2004;72(1):332-7.
- 306 5. Meerveld-Eggink A, de Weerd O, de Voer RM, Berbers GA, van Velzen-Blad H, Vlaminckx BJ,
307 et al. Impaired antibody response to conjugated meningococcal serogroup C vaccine in asplenic
308 patients. *European journal of clinical microbiology & infectious diseases* : official publication of the
309 European Society of Clinical Microbiology. 2011;30(5):611-8.
- 310 6. Pace D, Pollard AJ. Meningococcal disease: clinical presentation and sequelae. *Vaccine*.
311 2012;30 Suppl 2:B3-9.
- 312 7. Pluijmaekers A, de Melker H. The National Immunisation Programme in the Netherlands.
313 Surveillance and developments in 2020-2021. Het Rijksvaccinatieprogramma in Nederland
314 Surveillance en ontwikkelingen in 2020-2021: Rijksinstituut voor Volksgezondheid en Milieu RIVM;
315 2021.
- 316 8. Knol MJ, Hahné SJM, Lucidarme J, Campbell H, de Melker HE, Gray SJ, et al. Temporal
317 associations between national outbreaks of meningococcal serogroup W and C disease in the
318 Netherlands and England: an observational cohort study. *Lancet Public Health*. 2017;2(10):e473-e82.
- 319 9. Lucidarme J, Hill DM, Bratcher HB, Gray SJ, du Plessis M, Tsang RS, et al. Genomic resolution
320 of an aggressive, widespread, diverse and expanding meningococcal serogroup B, C and W lineage.
321 *The Journal of infection*. 2015;71(5):544-52.
- 322 10. Abad R, Lopez EL, Debbag R, Vazquez JA. Serogroup W meningococcal disease: global spread
323 and current affect on the Southern Cone in Latin America. *Epidemiology and infection*.
324 2014;142(12):2461-70.
- 325 11. Safadi MA, Bettinger JA, Maturana GM, Enwere G, Borrow R, Global Meningococcal I.
326 Evolving meningococcal immunization strategies. *Expert review of vaccines*. 2015;14(4):505-17.
- 327 12. Watkins ER, Maiden MC. Persistence of hyperinvasive meningococcal strain types during
328 global spread as recorded in the PubMLST database. *PloS one*. 2012;7(9):e45349.
- 329 13. Lewis L, Ram S. Meningococcal disease and the complement system. *Virulence*. 2013;5.
- 330 14. Principato S, Pizza M, Rappuoli R. Meningococcal factor H binding protein as immune
331 evasion factor and vaccine antigen. *FEBS Letters*. 2020;594(16):2657-69.
- 332 15. Frasch CE, Borrow R, Donnelly J. Bactericidal antibody is the immunologic surrogate of
333 protection against meningococcal disease. *Vaccine*. 2009;27 Suppl 2:B112-6.
- 334 16. Pollard AJ, Frasch C. Development of natural immunity to *Neisseria meningitidis*. *Vaccine*.
335 2001;19(11):1327-46.
- 336 17. Ouchterlony O. Antigen-antibody reactions in gels. *Acta Pathol Microbiol Scand*.
337 1949;26(4):507-15.
- 338 18. Brandwagt DAH, van der Ende A, Ruijs WLM, de Melker HE, Knol MJ. Evaluation of the
339 surveillance system for invasive meningococcal disease (IMD) in the Netherlands, 2004–2016. *BMC*
340 *infectious diseases*. 2019;19(1):860.
- 341 19. Severin WPJ. Latex agglutination in the diagnosis of meningococcal meningitis. *Journal of*
342 *clinical pathology*. 1972;25(12):1079-82.
- 343 20. Miellet WR, Mariman R, Pluister G, de Jong LJ, Grift I, Wijkstra S, et al. Detection of *Neisseria*
344 *meningitidis* in saliva and oropharyngeal samples from college students. *Sci Rep*. 2021;11(1):23138.

- 345 21. Goldschneider I, Gotschlich EC, Artenstein MS. Human immunity to the meningococcus. II.
346 Development of natural immunity. *The Journal of experimental medicine*. 1969;129(6):1327-48.
- 347 22. Maslanka SE, Gheesling LL, Libutti DE, Donaldson KB, Harakeh HS, Dykes JK, et al.
348 Standardization and a multilaboratory comparison of *Neisseria meningitidis* serogroup A and C
349 serum bactericidal assays. *The Multilaboratory Study Group. Clinical and diagnostic laboratory*
350 *immunology*. 1997;4(2):156-67.
- 351 23. Ohm M, van Rooijen DM, Bonačić Marinović AA, van Ravenhorst MB, van der Heiden M,
352 Buisman AM, et al. Different Long-Term Duration of Seroprotection against *Neisseria meningitidis* in
353 Adolescents and Middle-Aged Adults after a Single Meningococcal ACWY Conjugate Vaccination in
354 The Netherlands. *Vaccines (Basel)*. 2020;8(4).
- 355 24. van der Heiden M, Boots AMH, Bonacic Marinovic AA, de Rond LGH, van Maurik M,
356 Tcherniaeva I, et al. Novel Intervention in the Aging Population: A Primary Meningococcal Vaccine
357 Inducing Protective IgM Responses in Middle-Aged Adults. *Frontiers in immunology*. 2017;8(817).
- 358 25. Github Juno pipeline [Available from: [https://github.com/RIVM-](https://github.com/RIVM-bioinformatics/Juno_pipeline)
359 [bioinformatics/Juno_pipeline](https://github.com/RIVM-bioinformatics/Juno_pipeline).
- 360 26. Github MLST [Available from: <https://github.com/tseemann/mlst>.
- 361 27. Silva M, Machado MP, Silva DN, Rossi M, Moran-Gilad J, Santos S, et al. chewBBACA: A
362 complete suite for gene-by-gene schema creation and strain identification. *Microbial Genomics*.
363 2018;4(3).
- 364 28. Bratcher HB, Corton C, Jolley KA, Parkhill J, Maiden MCJ. A gene-by-gene population
365 genomics platform: de novo assembly, annotation and genealogical analysis of 108 representative
366 *Neisseria meningitidis* genomes. *BMC genomics*. 2014;15(1):1138.
- 367 29. Zhou Z, Alikhan NF, Sergeant MJ, Luhmann N, Vaz C, Francisco AP, et al. GrapeTree:
368 visualization of core genomic relationships among 100,000 bacterial pathogens. *Genome Res*.
369 2018;28(9):1395-404.
- 370 30. Marjuki H, Topaz N, Rodriguez-Rivera LD, Ramos E, Potts CC, Chen A, et al. Whole-Genome
371 Sequencing for Characterization of Capsule Locus and Prediction of Serogroup of Invasive
372 Meningococcal Isolates. *Journal of clinical microbiology*. 2019;57(3):e01609-18.
- 373 31. Ohm M, Hahné SJM, van der Ende A, Sanders EAM, Berbers GAM, Ruijs WLM, et al. Vaccine
374 impact and effectiveness of meningococcal serogroup ACWY conjugate vaccine implementation in
375 the Netherlands: a nationwide surveillance study. *Clinical Infectious Diseases*. 2021.
- 376 32. Bijlsma MW, Brouwer MC, Spanjaard L, van de Beek D, van der Ende A. A decade of herd
377 protection after introduction of meningococcal serogroup C conjugate vaccination. *Clinical infectious*
378 *diseases : an official publication of the Infectious Diseases Society of America*. 2014;59(9):1216-21.
- 379 33. Ram S, Lewis LA, Agarwal S. Meningococcal Group W-135 and Y Capsular Polysaccharides
380 Paradoxically Enhance Activation of the Alternative Pathway of Complement*. *Journal of Biological*
381 *Chemistry*. 2011;286(10):8297-307.
- 382 34. Ravenhorst MB, Bijlsma MW, van Houten MA, Struben VM, Anderson AS, Eiden J, et al.
383 Meningococcal carriage in Dutch adolescents and young adults; A cross-sectional and longitudinal
384 cohort study. *Clinical microbiology and infection : the official publication of the European Society of*
385 *Clinical Microbiology and Infectious Diseases*. 2017.
- 386 35. Stabler RA, Marsden GL, Witney AA, Li Y, Bentley SD, Tang CM, et al. Identification of
387 pathogen-specific genes through microarray analysis of pathogenic and commensal *Neisseria*
388 species. *Microbiology (Reading)*. 2005;151(Pt 9):2907-22.
- 389 36. Brouwer MC, de Gans J, Heckenberg SG, Zwinderman AH, van der Poll T, van de Beek D. Host
390 genetic susceptibility to pneumococcal and meningococcal disease: a systematic review and meta-
391 analysis. *The Lancet Infectious diseases*. 2009;9(1):31-44.
- 392 37. Joseph B, Schwarz RF, Linke B, Blom J, Becker A, Claus H, et al. Virulence evolution of the
393 human pathogen *Neisseria meningitidis* by recombination in the core and accessory genome. *PLoS*
394 *one*. 2011;6(4):e18441.

- 395 38. Kugelberg E, Gollan B, Tang CM. Mechanisms in *Neisseria meningitidis* for resistance against
396 complement-mediated killing. *Vaccine*. 2008;26 Suppl 8(6):I34-I9.
- 397 39. Watkins ER, Maiden MC. Metabolic shift in the emergence of hyperinvasive pandemic
398 meningococcal lineages. *Sci Rep*. 2017;7:41126.
- 399 40. Harris CL, Heurich M, Cordoba SRd, Morgan BP. The complotype: dictating risk for
400 inflammation and infection. *Trends in Immunology*. 2012;33(10):513-21.

401

402 **Table 1. Characteristics of selected isolates.**

Isolation	Serogroup	Clonal complex	total (n)	Age, median (range)	Clinical manifestation				
					pneumonia	sepsis	meningitis	arthritis	unspecified
Disease n=56	C	8	2	2.5 (2-3)	0	0	2	0	1
		11	11	19 (0-72)	0	3	7	1	4
		other	4	50 (1-53)	0	2	2	0	0
		total	17	19 (0-72)	0 (0%)	5 (29%)	11 (65%)	1 (6%)	5 (29%)
	W	11	18	43 (0-73)	3	7	4	2	3
		22	6	35 (1-79)	0	4	4	0	1
		other	2	63 (56-70)	0	0	0	1	1
		unknown	2	34 (0-68)	0	2	0	0	0
		total	28	43 (0-79)	3 (11%)	13 (46%)	8 (29%)	2 (7%)	5 (18%)
	Y	23	6	68 (18-78)	1	2	2	1	0
		167	2	45 (19-71)	0	0	2	0	0
		unknown	3	66 (16-70)	1	1	0	0	1
		total	11	67 (16-78)	2 (18%)	3 (27%)	4 (36%)	1 (9%)	1 (9%)
Carriage n=19	C	total	1	N/A	no symptoms				
	W	total	4	N/A	no symptoms				
	Y	total	10	N/A	no symptoms				
	NG	total	4	N/A	no symptoms				

403 NG = nongroupable; N/A = not applicable. Note that one patient may present with more than one clinical
404 manifestation.

405 **FIGURE LEGENDS**

406 **Figure 1. Serum bactericidal antibody titers of invasive and carriage meningococcal isolates determined**
407 **with pooled serum from unvaccinated individuals and pooled serum from vaccinated individuals. A) all**
408 **invasive and all carriage isolates for both serum pools, B) invasive isolates per serogroup C, W and Y for**
409 **both serum pools, C) SBA titers per clinical manifestation for the pool of serum from unvaccinated**
410 **individuals.** Statistical analyses performed with a mixed-effect analysis with Sidak's correction for multiple
411 comparison on log-transformed data. Geometric mean SBA titers with 95% confidence intervals are shown in
412 panel A and B for each group. SBA = serum bactericidal antibody; unvacc = tested with pool of serum from
413 unvaccinated individuals, vacc = tested with pool of serum from vaccinated individuals. * $p < 0.05$; ** $p < 0.01$;
414 *** $p < 0.001$; **** $p < 0.0001$.

415

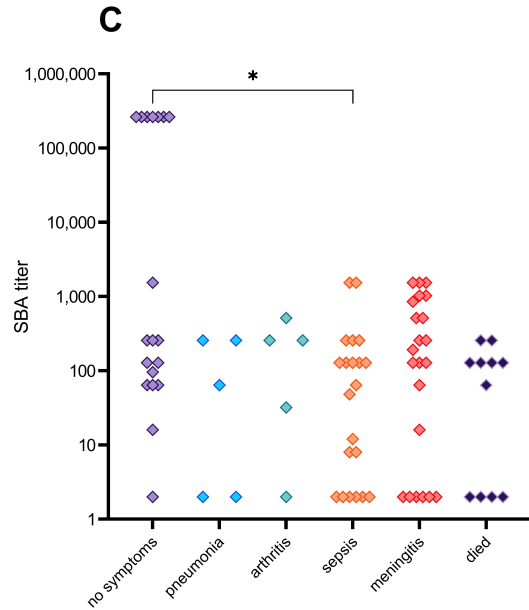
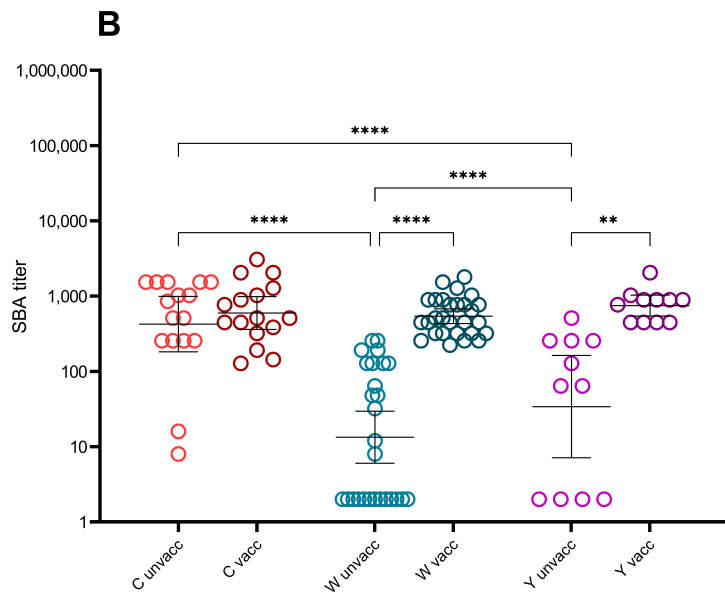
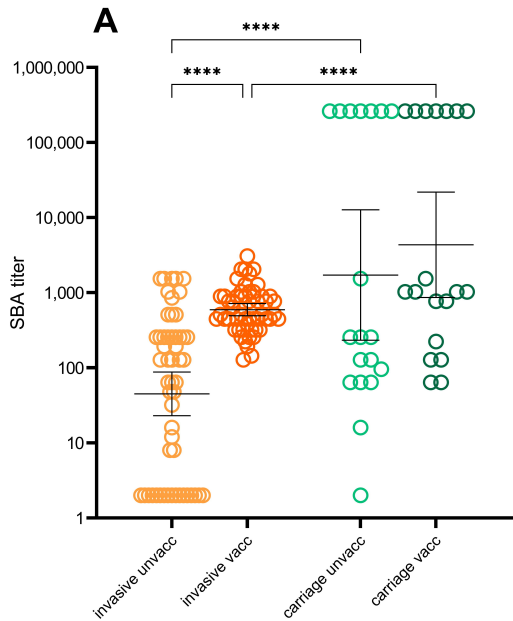
416 **Figure 2. Serum bactericidal antibody titers of invasive and carriage meningococcal isolates per clonal**
417 **complex determined with A) pooled serum from unvaccinated individuals and B) pooled serum from**
418 **vaccinated individuals.** SBA = serum bactericidal antibody; cc = clonal complex. Geometric mean SBA titers
419 are shown for each clonal complex. For three isolates (n=1 for cc8 and n=2 for other), a result was available for
420 only one of the serum pools.

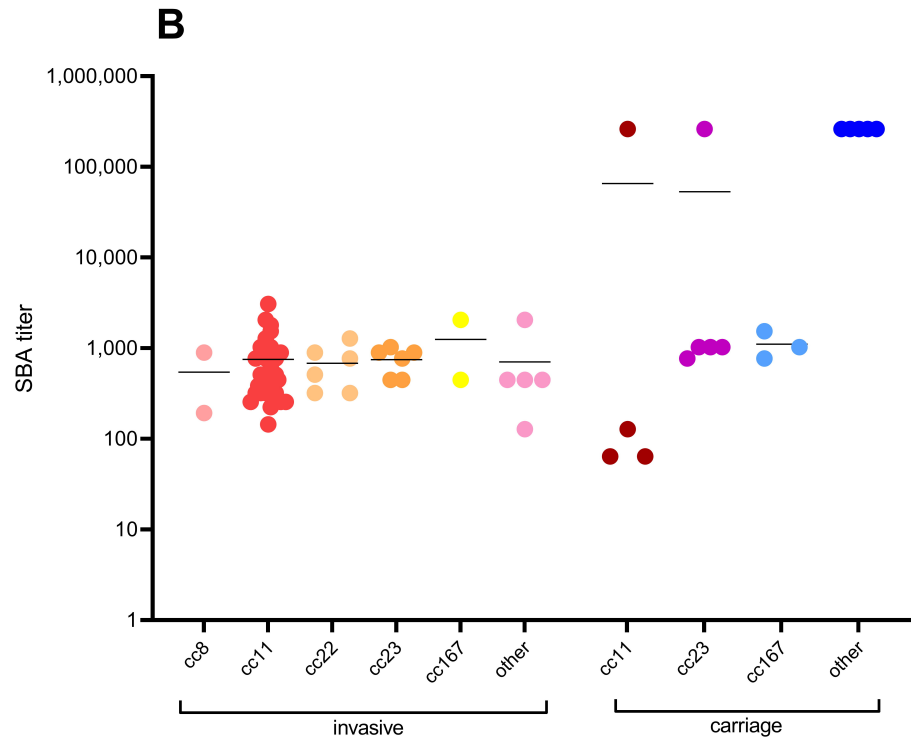
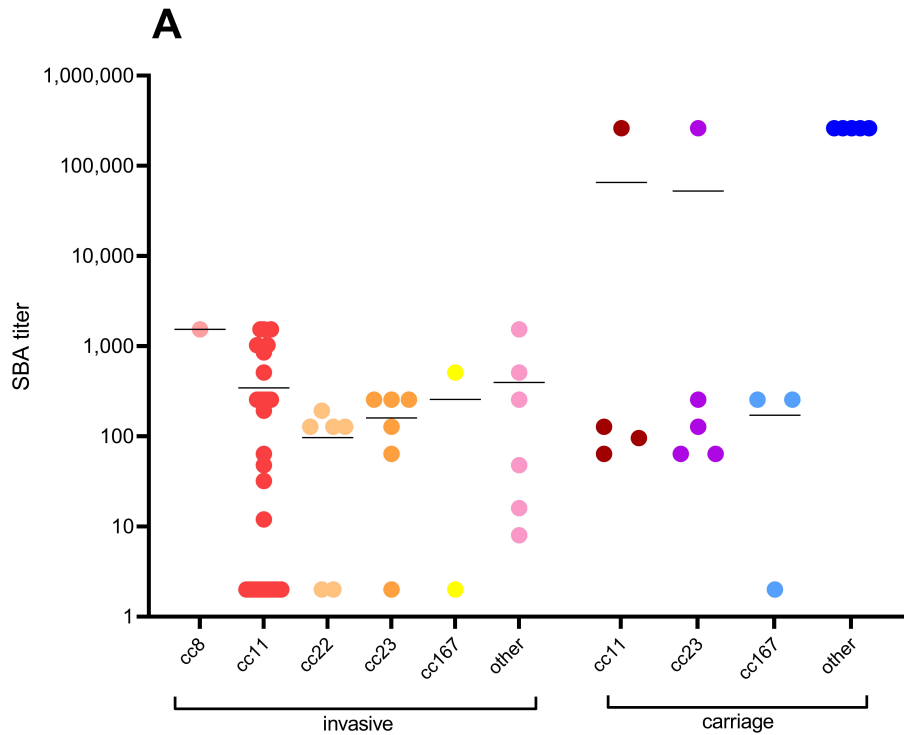
421

422 **Figure 3. Minimum spanning trees of cgMLST data per A) source of isolation B) serogroup and clonal**
423 **complex and C) serum bactericidal antibody (SBA) titer class* when tested with pooled serum of**
424 **unvaccinated individuals.** cc = clonal complex; WGS = whole genome sequencing; non-vac_binary = binary
425 SBA titer class tested with pooled serum of unvaccinated individuals. *The SBA titer class as shown in C was
426 assigned 0 (no to low resistance, in green) for a titer ≤ 128 and 1 (medium to high resistance, in red) for a titer
427 > 128 . Every circle represents one isolate, the letter in the circle represents the serogroup. If a circle is white-
428 colored, data is missing. There are five invasive isolates and two carriage isolates for which the ST does not
429 belong to a cc, thus these values are missing. The scale of the branch length is shown on scale depicted in the
430 left lower corner.

431

432 **Figure 4. Serum bactericidal antibody titers with geometric mean titers in individual serum samples from**
433 **vaccinated adolescents (n=54, red triangle) and adults (n=50 blue circle) against a serogroup W**
434 **laboratory non-cc11 isolate and a serogroup W hyperinvasive cc11 isolate. *p<0.05 as determined with a**
435 **Wilcoxon matched-pairs signed rank test using Pratt's method. Bold lines are geometric mean SBA titers with**
436 **95% confidence intervals.**

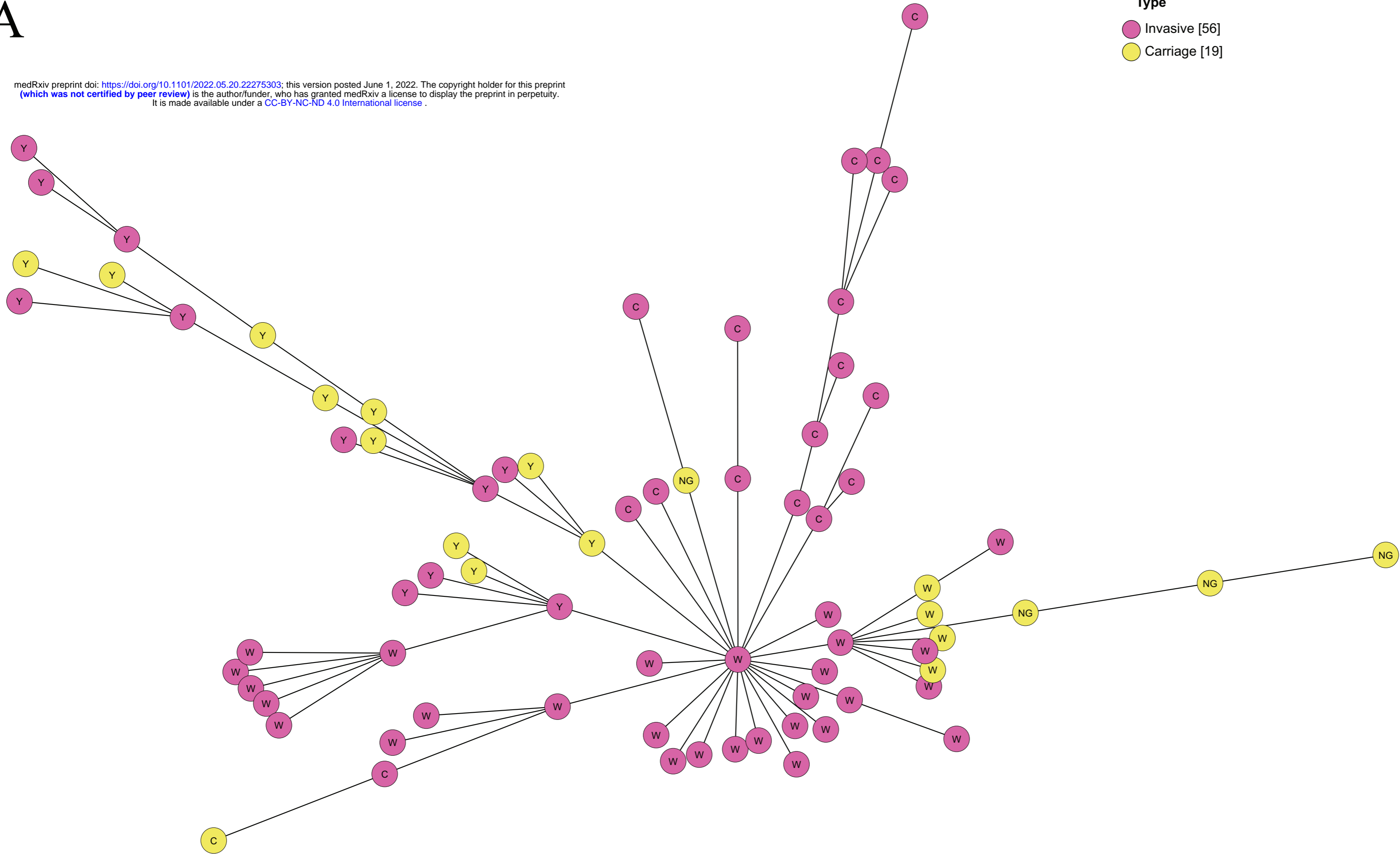




A

medRxiv preprint doi: <https://doi.org/10.1101/2022.05.20.22275303>; this version posted June 1, 2022. The copyright holder for this preprint (which was not certified by peer review) is the author/funder, who has granted medRxiv a license to display the preprint in perpetuity. It is made available under a [CC-BY-NC-ND 4.0 International license](https://creativecommons.org/licenses/by-nc-nd/4.0/).

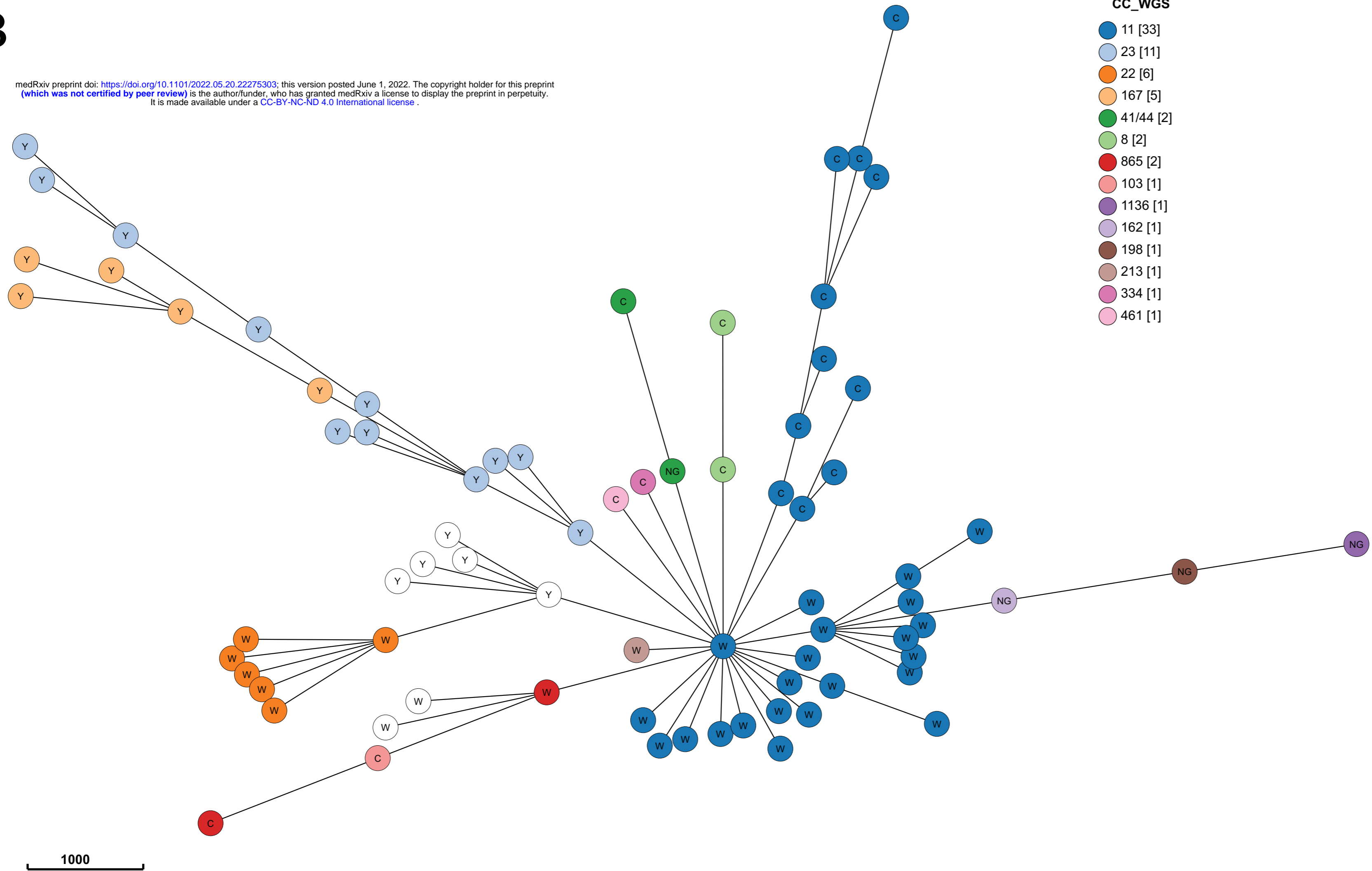
Type
● Invasive [56]
● Carriage [19]



1000

B

medRxiv preprint doi: <https://doi.org/10.1101/2022.05.20.22275303>; this version posted June 1, 2022. The copyright holder for this preprint (which was not certified by peer review) is the author/funder, who has granted medRxiv a license to display the preprint in perpetuity. It is made available under a [CC-BY-NC-ND 4.0 International license](https://creativecommons.org/licenses/by-nc-nd/4.0/).



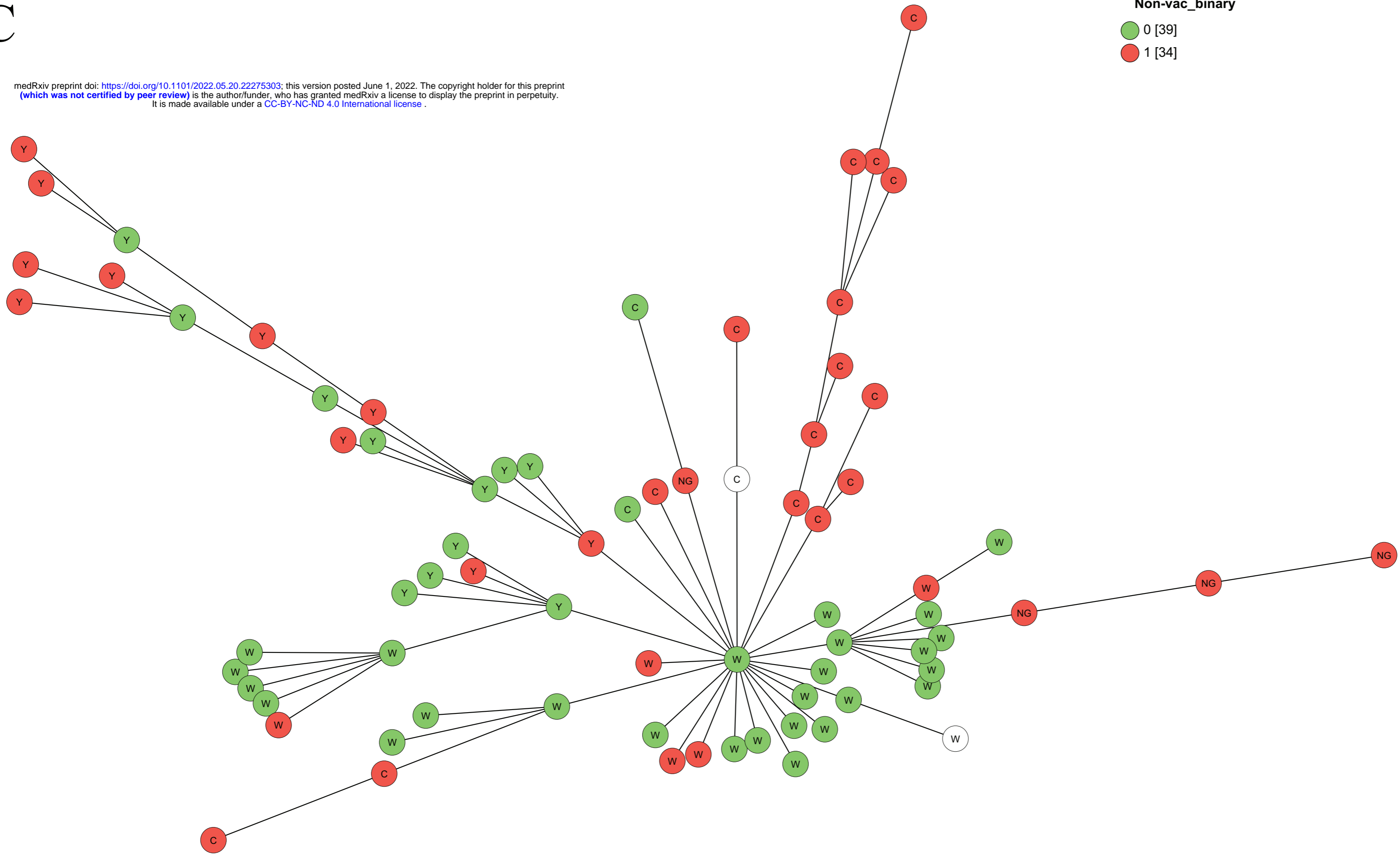
C

medRxiv preprint doi: <https://doi.org/10.1101/2022.05.20.22275303>; this version posted June 1, 2022. The copyright holder for this preprint (which was not certified by peer review) is the author/funder, who has granted medRxiv a license to display the preprint in perpetuity. It is made available under a [CC-BY-NC-ND 4.0 International license](https://creativecommons.org/licenses/by-nc-nd/4.0/).

Non-vac_binary

0 [39]

1 [34]



1000

MenW

