

1 **COVID-19 symptoms and duration of direct antigen test positivity at a**
2 **community testing and surveillance site, January 2021-2022**

3 **Short title: COVID-19 symptoms and rapid antigen test positivity at a community**
4 **testing site.**

5
6 **AUTHORS:** Carina Marquez MD^{1,*}, Andrew D. Kerkhoff MD, PhD¹, John Schrom, MPH¹,
7 Susana Rojas², Douglas Black BA¹, Anthea Mitchell, BA³, Chung-Yu Wang, BA³,
8 Genay Pilarowski PhD⁴, Salustiano Ribeiro MS⁵, Diane Jones RN⁴, Joselin Payan⁴,
9 Simone Manganelli MS⁴, Susy Rojas BS⁴, Jonathan Lemus BA⁴, Vivek Jain¹ MD,
10 Gabriel Chamie MD¹, Valerie Tulier-Laiwa JD², Maya Petersen MD, PhD⁶, Joseph
11 DeRisi PhD^{3**}, Diane V. Havlir MD^{1**}

12
13 **Affiliations:**

14 ¹Division of HIV, Infectious Diseases and Global Medicine, Zuckerberg San
15 Francisco General Hospital, University of California San Francisco

16 ²The San Francisco Latino Task Force-Response to COVID-19, San Francisco, CA,
17 USA

18 ³Chan-Zuckerberg Biohub, San Francisco, CA

19 ⁴Unidos en Salud, San Francisco, CA, USA

20 ⁵Bay Area Phlebotomy and Laboratory Services, San Francisco, CA, USA

21 ⁵Division of Biostatistics, School of Public Health, University of California, Berkeley,
22 Berkeley, CA, USA

23

24 **Authors contributed equally

25

26 **Corresponding author:**

27 *Carina Marquez, MD, MPH

28 Associate Professor of Medicine

29 Division of HIV, Infectious Diseases Global Medicine

30 University of California, San Francisco

31 Zuckerberg San Francisco General Hospital

32 995 Potrero Ave

33 San Francisco, CA 94110

34 carina.marquez@ucsf.edu

35 Phone: 415-476-4082

36 Fax: 415-476-6953

37

38

39 **Manuscript Word count: 2983**

40 **Keywords:** COVID-19; Omicron; rapid antigen testing

41

42

43

44

45

46

47
48
49
50
51
52
53
54
55
56
57
58
59
60
61
62
63
64
65
66
67
68
69
70

Abstract

Importance: Characterizing clinical symptoms and evolution of community- based SARS Co-V-2 infections can inform health practitioners and public health officials in a rapidly changing landscape of population immunity and viral variants.

Objective: To characterize COVID-19 symptoms during the Omicron period compared to pre-Delta and Delta variant periods and assess the duration of COVID-19 BinaxNOW rapid antigen test positivity during the Omicron variant surge.

Design, Setting, and Participants: This public health surveillance study was undertaken between January 2021- January 2022, at a walk-up community COVID-19 testing site in San Francisco, California. Testing with BinaxNOW rapid antigen tests was available regardless of age, vaccine status, or symptoms throughout.

Main Outcomes and Measures: We characterized the prevalence of specific symptoms for people with a positive BinaxNOW test during the Omicron period and compared it to the pre-Delta and Delta periods. During the Omicron period, we examined differences in symptoms by age and vaccine status. Among people returning for repeat testing during Omicron period, we estimated the proportion with a positive BinaxNOW antigen test between 4-14 days from symptom onset or since first positive test if asymptomatic.

Results: Of 63,277 persons tested, 18,301 (30%) reported symptoms and 4,568 (25%) tested positive for COVID-19. During the Omicron period, 41.6% (3032/7283) of symptomatic testers tested positive, and the proportion reporting cough (67.4%) and

71 sore throat (43.4%) was higher than during Delta and pre-Delta periods. Congestion
72 was higher during Omicron (38.8%) than during the pre-Delta period and loss of
73 taste/smell (5.3%) and fever (30.4%) were less common. Fevers and myalgias were
74 less common among persons who had received boosters compared to unvaccinated
75 people or those who received the primary series. Five days after symptom onset, 31.1%
76 of people with COVID-19 stated their symptoms were similar or worsening. An
77 estimated 80.2% of symptomatic re-testers remained positive five days after symptom
78 onset and 60.5% after ten days.

79 **Conclusions and Relevance:** COVID-19 upper respiratory tract symptoms were more
80 commonly reported during the Omicron period compared to pre-Delta and Delta
81 periods, with differences by vaccination status. Antigen test positivity remained high
82 after 5 days, supporting guidelines requiring a negative test to shorten the isolation
83 period.

84

85

86

87

88

89

90

91

92 **Key points**

93 **Question:** During the Omicron period, are there differences in COVID-19
94 symptomatology compared to the pre-Delta and Delta periods and how long do rapid
95 antigen tests remain positive?

96 **Findings:** In this community-based surveillance study we detected differences in
97 symptomatology between the Omicron period and prior variant-periods, and by age and
98 vaccination status. Five days after symptom onset, 80% remained positive with a
99 BinaxNOW test.

100 **Meaning:** During the Omicron period, differences in symptomatology may be due to
101 rising population immunity and a new variant. BinaxNOW positivity remained high
102 among re-testers, which supports guidelines that use rapid tests to shorten the isolation
103 period.

104

105

106

107

108

109

110

111 **Introduction**

112 COVID-19 symptoms are an important entry point into testing, treatment, and
113 isolation. Prompt entry into this sequence of care is critical to breaking chains of
114 transmission and starting anti-viral treatment early in infection^{1,2}. As population immunity
115 and viral variants evolve in the ongoing SARS CoV-2 pandemic, understanding
116 symptomatology, symptom duration, and the use of changing diagnostic modalities,
117 such as rapid antigen tests, can help inform medical providers and public health leaders
118 on clinical management and key policy questions. National studies from the United
119 Kingdom (UK) have demonstrated changes in COVID-19 symptom profile by viral
120 variant.³⁻⁵ However, there has not been a large study of symptom variation by variant
121 wave among outpatients outside of the UK. Further, there have been relatively few data
122 during the Omicron surge on COVID-19 symptoms, their duration, variation in adult and
123 pediatric populations, and variation by vaccination status.

124 Understanding the duration of symptoms and infectiousness can inform many
125 policy questions, including return to work guidelines, and individual decisions during
126 COVID-19 surges. Although the US Centers for Disease Control (CDC) recommended
127 return to work after 5 days if symptoms improve⁶, a recent study from Alaska and two
128 studies of health care workers showed that over 50-80% of people remain rapid antigen
129 test positive 5 days after symptom onset. These data raise concerns about persistent
130 infectiousness after 5 days, as antigen test positivity strongly correlates with the
131 presence of viable virus.⁷⁻¹¹

132 Among persons testing at a walk-up COVID-19 testing site in San Francisco that
133 serves Latinx residents¹² – a community disproportionately affected by COVID-19¹² –
134 our objective was to first determine the prevalence and characteristics of specific
135 symptoms among symptomatic COVID-19 positive persons during the Omicron period
136 compared to the Delta and pre-Delta periods as population immunity and variants
137 evolved. During the Omicron period we further sought to assess how symptoms varied
138 by vaccination status and age and to characterize symptom duration and persistence of
139 a positive BinaxNOW rapid antigen test.

140

141 **Methods**

142 **Study setting and participants**

143 This public health surveillance study was undertaken between January 10, 2021, and
144 January 31, 2022 at the Unidos en Salud (UeS) neighborhood testing and vaccine site,
145 which is located in the Mission District of San Francisco. The UeS neighborhood testing
146 and vaccination site was co-designed through a community-academic partnership
147 between the San Francisco Latino Task Force- Response to COVID-19 (LTF),
148 University of California, San Francisco (UCSF), and the Chan Zuckerberg Biohub.^{2,13}
149 The site serves predominantly low-income Latinx persons, a large majority of whom are
150 low-wage earning frontline and essential workers.¹ It is conveniently located near a busy
151 transportation hub and offers free walk-up testing with no request for residency or health
152 insurance information. Throughout the study period, we conducted community outreach
153 consistently, messaging the importance of regular testing regardless of symptoms and

154 vaccination status due to the elevated risk of acquiring COVID-19 among the population
155 served by the site.

156

157 **Ethics statement**

158 The study was conducted under a public health surveillance program that was reviewed
159 by the UCSF Committee on Human Research and determined to be exempt and waived
160 from IRB oversight. All participants provided informed consent in their preferred
161 language prior to survey administration and COVID-19 testing.

162

163 **Procedures and samples**

164 All participants or their caretakers completed a structured electronic survey capturing
165 socio-demographics, vaccination status, symptoms (including date-of-onset and
166 trajectory [e.g., improving, unchanged, worsening]). Trained laboratory assistants
167 performed a bilateral anterior nasal swab for COVID-19 testing using the BinaxNOW
168 COVID-19 Ag Card (Abbott Diagnostics) and a bilateral nasal swab for sequencing.^{14,15}

169 We performed genotyping of all isolates as previously described.¹⁶ Full genome
170 sequences are available through GISAID and previously described for the pre-Delta
171 period (majority being Epsilon¹⁷ and Alpha variants) and for the Omicron period.¹⁶

172 During the Omicron period, community health workers reminded people testing positive
173 to repeat their test 5 days after symptom onset or their initial test to assess candidacy
174 for shortening isolation per California Department of Public Health guidelines.¹⁸ Clients
175 received a text message reminding them of this option.

176

177 **Definitions and Statistical Analysis**

178 For analysis purposes, three time periods were defined, corresponding to distinct
179 COVID-19 waves: (1) Pre-Delta period: January 10, 2021 to May 31, 2021; (2) Delta
180 period: June 1, 2021 to November 30, 2021; and, (3) Omicron period: December 1,
181 2021 to January 30, 2022. Two different analysis populations were defined.

182 First, among symptomatic testers (n=18,301) we calculated the proportion with a
183 positive BinaxNOW rapid antigen test and the prevalence of specific symptoms during
184 each variant period (Omicron, Delta, and pre-Delta), stratified by rapid antigen test
185 result. Among persons with a positive rapid antigen test we evaluated whether symptom
186 prevalence differed between the Omicron compared to the Delta and pre-Delta periods.
187 Finally, during the Omicron period, we also assessed symptom prevalence by age and
188 vaccination status, and determined whether self-reported symptoms improved,
189 worsened, or remained unchanged over days following the test.

190 The second analysis (n=942) sought to understand the proportion of participants
191 during the Omicron wave with a positive repeat COVID-19 BinaxNOW rapid antigen test
192 result. This analysis was restricted to 're-testers', defined as participants who had a
193 positive BinaxNOW rapid antigen test result on or after January 1, 2022, and had at
194 least one additional BinaxNOW rapid antigen result two or more days after their initial
195 positive test. For each day from 4 to 14 following symptom onset, or day since initial
196 positive test if asymptomatic, we estimated the proportion of persons who remained
197 positive by day. Participants whose second test was positive were assumed to be
198 positive each day between the positive tests. Test positivity on days between a positive
199 and a negative test was imputed in three different ways: (1) assuming a linearly

200 decreasing probability of testing positive between their two tests (main analysis), (2)
201 assuming that tests would have converted to negative the day after their initial positive
202 test (lower bound of sensitivity analysis), (3) assuming that tests would have remained
203 positive until the day before their repeat negative test (upper bound of sensitivity
204 analysis). We further stratified analyses test by symptom and vaccine status. For
205 completeness, we also report positivity over time among repeat testers without
206 imputation of results between tests.

207 For both analysis populations, Fisher's exact or chi-squared tests were used as
208 appropriate to compare proportions. Kruskal-Wallis tests were used to compare
209 medians. We report both unadjusted p-values and, for multiple comparisons of symptom
210 prevalence across periods, vaccination, and age strata, p-values adjusted using the
211 Benjamin-Hochberg method to control false discovery rate at 5%.

212

213 **Results**

214 Between January 10, 2021, and January 31, 2022, 63,277 persons underwent COVID-
215 19 testing at the UeS Neighborhood site. Overall, 18,301 (29.9%) participants across all
216 waves reported at least one current symptom at the time of COVID-19 testing; 37.1%
217 (n=7,823) during Omicron, 28.3% during Delta (n=5,485), and 22.8% (n=5,533) during
218 the pre-Delta period. Test positivity was 41.6%, 8.5%, and 19.2%, respectively. Overall,
219 the median age of testers was 32 (IQR: 21-44) years old, 12.0% were <12, 52.0% were
220 women, and 68.5% were Latinx. During the Omicron period, the median age was 34.2,
221 52.6% were female, 74.3% were Latinx, 73.0% of reported a household income of
222 <\$50,000 per year. We detected small differences in who sought testing by variant-

223 period according to age, gender, and race (Supplementary Table 1). The proportion of
224 unvaccinated participants increased throughout variant periods, during Omicron 12.7%
225 of symptomatic testers were unvaccinated compared to 39.7% during the Delta period,
226 and 93.3% during the pre-Delta period, $p < 0.01$ (Supplementary Table 1).

227

228 **Symptom Profile of People Testing Positive for COVID-19**

229 During the Omicron period ($n=3,032$), the most common symptoms reported by
230 persons testing positive for COVID-19 by BinaxNOW rapid antigen tests were cough
231 (67.4%), sore throat (43.4%), congestion (38.8%), headache (35.5%), while loss of
232 smell/taste (5.3%), nausea (5.0%) and diarrhea (4.8%) were the least commonly
233 reported (Table 1A). The proportion of symptomatic COVID-19 positive persons
234 reporting cough and sore throat was higher during the Omicron period relative to Delta
235 and pre-Delta periods, while fever, and loss of taste/smell decreased relative to Delta
236 and pre-Delta periods (Table 1A, Supplementary Figure 1, $p < 0.05$ for all comparisons).
237 Congestion was more common among symptomatic people testing positive during the
238 Omicron period compared to pre-Delta ($p < 0.001$). The leading COVID-19 symptoms
239 among symptomatic people testing positive during the Omicron period (cough, sore
240 throat, and congestion) were also common among symptomatic people who tested
241 negative (Table 1, Supplementary Figure 1).

242 During the Omicron period, 47.7% of symptomatic children (<12 years) with
243 COVID-19 reported only one symptom. Reporting a single symptom was less common
244 among adults (37.7%, $p < 0.001$) and adolescents (31.8%, $p < 0.001$) (Supplemental
245 Table 2). Among children with COVID-19, cough, fever, sore throat, and congestion

246 were the most common symptoms. Loss of taste/smell was uncommon among children
247 (0.3%) compared to adolescents (5.8%, $p<0.001$) and adults (5.8%, $p<0.001$) (Table
248 1B).

249 We also found differences in symptoms according to vaccination status (Table 3).
250 Among boosted persons, congestion was more common, and fever was less common
251 compared to both unvaccinated people and vaccinated/non-boosted people ($p<0.05$ for
252 all comparisons; Table 1C); myalgias were also less common among boosted persons
253 compared to vaccinated/non-boosted persons ($p=0.01$). The prevalence of other
254 symptoms did not differ by vaccination status.

255

256 **Time to improvement of COVID-19 symptoms during the Omicron period**

257 Next, we evaluated the trajectory of symptoms among persons testing COVID-19
258 positive during the Omicron period (**Figure 1A**; $n=1,613$). Among participants tested five
259 days after symptom onset, 63.0% (95%CI: 56.6-69.2) of persons had improving
260 symptoms by day of testing, symptoms were similar in 31.1% (95%CI: 25.3%-37.4%)
261 and in 5.9% were worsening (95%CI: 3.3%-9.7%). Among participants testing ten days
262 after symptom onset, symptoms were improving in 82.2% (95%CI: 56.6%-69.2%), were
263 similar in 17.8% (95%CI: 9.8%-28.5%) and were worsening in 0% (95%CI: 0%-4.9%).
264 Symptom trajectory was similar across vaccination status or age (**Figure 1B, 1C**).

265

266 **COVID-19 repeat testing results**

267 Among persons who undertook COVID-19 re-testing, an estimated 65% (95%CI: 62%-
268 69%) people remained test-positive 5 days after symptom onset or 5 days from their

269 initial positive test if they were asymptomatic (Figure 2A). Among symptomatic persons,
270 an estimated 80% (95% CI: 76%-84%) and 35% (95%CI: 30%-40%) remained positive
271 on day 5 and 10 respectively. Among persons asymptomatic at testing, an estimated
272 49% (95% CI: 34-55%) and 19% (95% CI, 5%-42%) remained positive on day 5 and 10.
273 Repeat test positivity was higher among symptomatic vs. asymptomatic testers on day 5
274 and 10. (Figure 2B). We found no difference in trajectory of test positivity over time by
275 vaccination status (Figure 2C). Similar results were found using non-imputed values for
276 interim test positivity (Supplementary Figure 2A-2C).

277

278 **Discussion**

279 Over the course of three different COVID-19 surges, each with a different
280 predominant SARS-CoV-2 variant, and against a backdrop of rising population
281 immunity, we found a shift towards predominantly upper respiratory tract symptoms with
282 the Omicron variant among symptomatic persons presenting for COVID testing at a low-
283 barrier, walk-up testing site. Omicron symptom trajectories were heterogenous, with a
284 third of people reporting no improvement or worsening of symptoms when they returned
285 for repeat testing with a BinaxNOW rapid antigen test after 5 days. During the Omicron
286 surge, 80% of symptomatic persons with COVID-19 returning for repeat testing were
287 BinaxNOW positive after 5 days, and 35% still positive after 10 days, regardless of
288 vaccine status. These results provide updated clinical data on COVID-19 outpatients
289 and rapid antigen test positivity to guide safe return-to-work guidelines.

290 In over 3,000 symptomatic people testing positive for COVID-19 during an
291 Omicron surge, upper respiratory tract symptoms (sore throat, congestion) were more
292 common than during pre-Delta and Delta periods. The loss of taste and smell - often
293 used by clinicians to help distinguish SARS Co-V 2 from other viral illness - was much
294 less common during the Omicron period (5.3%) compared to the pre-Delta (17.2%) and
295 Delta (20.5%) periods. This shift in symptomatology seen from pre-Delta to Omicron is
296 likely due to both the increase in population immunity during the Omicron surge and
297 biologic characteristics of the Omicron variant, which in vitro-studies suggest replicates
298 better in bronchial tissue versus deeper lung sites.¹⁹ During the Omicron surge,
299 symptoms also varied by vaccine status; congestion was more common, and fever and
300 myalgia were less common among boosted persons compared to partially or
301 unvaccinated persons.

302 Our findings are concordant with a population-representative household study
303 conducted during the Omicron period in the United Kingdom (UK)⁵ that found a
304 predominance of upper respiratory tract symptoms. Additionally, our data expands
305 existing knowledge on COVID-19 symptomatology by describing differences in
306 symptomatology by vaccine status and age-group. Assessing the ability of symptoms to
307 predict test positivity was outside the scope of our analysis. However, similar to findings
308 from the UK findings,⁵ we found the background rate of common COVID-19 symptoms
309 during the Omicron period to be high among both people who tested both positive and
310 negative. These findings emphasizing the importance of ensuring low-barrier testing is
311 available regardless of the tester's symptom profile.

312 This study is one of the few in the Omicron era to describe symptoms of mild-
313 moderate infection in children. While symptoms were heterogenous in children, over
314 40% of children under the age of 12 had only one symptom, with fever, cough, and
315 congestion being the most common. It is important to recognize that children, especially
316 those under five, may present with only one symptom. Thus, parents and health care
317 providers should have a low-threshold to test children with any symptom potentially
318 concerning for COVID-19. Rapid and easily accessible testing is an important strategy
319 to keep children in school, while minimizing transmission.^{21,22}

320 Despite lower frequencies of constitutional symptoms during the Omicron surge,
321 it is noteworthy that recovery varied and 31% of patients did not report perceived
322 improvement by day 5. During the Omicron surge, frontline workers were urged to
323 return to work to meet staffing needs in occupations such as transport, home health
324 care, and the food service industry. During surges of the magnitude of Omicron,
325 frontline workers can be urged to return to work to meet staffing needs in occupations
326 such as transport, home health care, and the food service industry. Despite not having
327 illness serious enough to merit hospitalization, many persons with Omicron still felt ill,
328 yet felt pressure by their employers to return to work. Safeguards routinely in place in
329 the formal sector in the United States, are often unavailable in the informal sector.^{23,24}
330 Pandemic planning must account for these health and economic pressures in future
331 surges.

332 Of persons with COVID-19 re-testing on Day 5, 80% of symptomatic people and
333 41% of asymptomatic people remained positive. This number is nearly identical to a
334 community-based sample of people seeking testing in Alaska²⁵ and similar to the

335 findings in two cohorts of health care workers^{26,27}. This high proportion of positive repeat
336 tests is not surprising, given existing data on viral dynamics of Omicron and other
337 variants. In a predominantly boosted cohort from the National Basketball Association
338 (NBA), viral trajectories of Omicron were heterogenous, but the duration of the acute
339 phase (proliferation and clearance) was 9.9 days and similar to prior variants, including
340 Delta.^{28,29} Additionally, in this cohort of predominantly healthy, boosted NBA players
341 with infections due to the Omicron variant, only 52% of people had a cycle threshold of
342 <30 5 days after symptom onset.²⁸

343 Interestingly, we found that COVID-19 test positivity remained high even 10 days
344 following symptom onset, where more than 30% of people with symptomatic COVID-19
345 during their initial still had a positive rapid antigen test. Additional epidemiologic studies
346 are needed to assess whether people remain infectious at this juncture. However, prior
347 studies show a strong correlation between rapid antigen positivity and viable virus,^{7-9,30}
348 even in the clearance phase and after 10 days of symptom onset^{9,10,31} - suggesting
349 infectiousness beyond 10 days may be possible, though less common.

350 Positive rapid antigen tests correlate to having viable virus, and thus capture
351 persons with the highest degree of infectivity to others.^{7-9,11} The CDC recommends that
352 people can leave isolation with a well-fitting mask after 5 days of symptoms if symptoms
353 are improving, regardless of repeat testing.⁶ If a public health goal is to break chains of
354 SARS CoV-2 transmission, our data strongly support current California Department of
355 Public Health guidelines¹⁸ that require a rapid antigen test to shorten the 10-day
356 isolation period.

357 Strengths of our study include the use of data spanning multiple COVID-19
358 pandemic waves from one high-throughput, low-barrier, community-based testing site
359 that predominantly serves a highly impacted low-income Latinx population. Further,
360 symptom ascertainment and testing procedures did not change during the surveillance
361 period. Our study had certain limitations. Although it was cross-sectional, our data
362 provide an important synthesis of symptomatology within a diverse population of people
363 seeking community testing. Second, symptoms and timing of onset were self-reported
364 which, may introduce bias; however, symptom data were collected prior to persons
365 knowing their COVID-19 test result and thus would not be expected to result in
366 differential bias between those who were COVID-19 positive and negative. Additionally,
367 we did not characterize the severity of COVID-19 symptoms across waves, and even a
368 single very severe symptom can cause substantially greater morbidity in an individual
369 than multiple mild symptoms. Finally, testing was undertaken with rapid antigen tests,
370 and thus may have resulted in misclassification of individuals during the earliest phases
371 of their illness. Nonetheless, strict quality control measures were implemented to ensure
372 accuracy of results and the use of rapid antigen tests.

373 In summary, the clinical presentation of symptomatic persons changed over time
374 during several COVID surges characterized by increasing population immunity and
375 different SARS CoV-2 variants. During Omicron, when population immunity was higher,
376 persons with symptoms often did not see improvement after 5 days and antigen tests
377 frequently remained positive. These findings highlight the importance of work
378 assurances to protect workers and requirements for rapid antigen testing to shorten
379 isolation to protect the workplace. With the dynamic landscape of host immunity and

380 viral evolution, we need real time data from diverse populations for clinicians, public
381 health officials and the community to develop optimal strategies to mitigate the health,
382 economic and societal effects for SARS CoV-2 and to ensure that inequities in this
383 disease are not exacerbated.

384

385 **Funding/Support:** This program was supported by the University of California San
386 Francisco, John P. McGovern Foundation, and the Chan Zuckerberg Health Initiative.
387 The BinaxNOW cards were provided by the California Department of Public Health.

388

389 **Role of the Funder/Sponsor:** The sponsors had no role in the design and conduct of
390 the study; collection, management, analysis, and interpretation of the data; preparation,
391 review, or approval of the manuscript; and decision to submit the manuscript for
392 publication.

393

394

395

396

397

398

399

400

401

402

403

404
405
406
407
408
409
410
411
412
413
414
415
416
417
418
419
420
421
422
423
424

References

1. Rubio LA, Peng J, Rojas S, et al. The COVID-19 Symptom to Isolation Cascade in a Latinx Community: A Call to Action. *Open Forum Infect Dis.* 2021;8(2):ofab023. doi:10.1093/ofid/ofab023

2. Pilarowski G, Marquez C, Rubio L, et al. Field Performance and Public Health Response Using the BinaxNOW™ Rapid Severe Acute Respiratory Syndrome Coronavirus 2 (SARS-CoV-2) Antigen Detection Assay During Community-Based Testing. *Clin Infect Dis.* 2021;73(9):e3098-e3101. doi:10.1093/cid/ciaa1890

3. Elliott J, Whitaker M, Bodinier B, et al. Predictive symptoms for COVID-19 in the community: REACT-1 study of over 1 million people. *PLOS Medicine.* 2021;18(9):e1003777. doi:10.1371/journal.pmed.1003777

4. Vihta KD, Pouwels KB, Peto T, et al. Symptoms and SARS-CoV-2 positivity in the general population in the UK. *Clin Infect Dis.* Published online November 8, 2021:ciab945. doi:10.1093/cid/ciab945

- 425 5. Vihta KD, Pouwels KB, Peto TE, et al. Omicron-Associated Changes in Sars-Cov-2
426 Symptoms in the United Kingdom. Published online January 18,
427 2022:2022.01.18.22269082. doi:10.1101/2022.01.18.22269082
- 428 6. CDC, CDC. Quarantine & Isolation. Centers for Disease Control and Prevention.
429 Published January 27, 2022. Accessed March 6, 2022.
430 <https://www.cdc.gov/coronavirus/2019-ncov/your-health/quarantine-isolation.html>
- 431 7. Currie DW, Shah MM, Salvatore PP, et al. Relationship of SARS-CoV-2 Antigen
432 and Reverse Transcription PCR Positivity for Viral Cultures. *Emerg Infect Dis.*
433 2022;28(3):717-720. doi:10.3201/eid2803.211747
- 434 8. Routsias JG, Mavrouli M, Tsoplou P, Dioikitopoulou K, Tsakris A. Diagnostic
435 performance of rapid antigen tests (RATs) for SARS-CoV-2 and their efficacy in
436 monitoring the infectiousness of COVID-19 patients. *Sci Rep.* 2021;11(1):22863.
437 doi:10.1038/s41598-021-02197-z
- 438 9. Killingley B, Mann A, Kalinova M, et al. Safety, tolerability and viral kinetics during
439 SARS-CoV-2 human challenge | Research Square. *Research Square.* Accessed
440 March 6, 2022. <https://www.researchsquare.com/article/rs-1121993/v1>
- 441 10. Singanayagam A, Patel M, Charlett A, et al. Duration of infectiousness and
442 correlation with RT-PCR cycle threshold values in cases of COVID-19, England,
443 January to May 2020. *Eurosurveillance.* 2020;25(32). doi:10.2807/1560-
444 7917.ES.2020.25.32.2001483

- 445 11. Jones TC, Biele G, Mühlemann B, et al. Estimating infectiousness throughout
446 SARS-CoV-2 infection course. *Science*. 2021;373(6551):eabi5273.
447 doi:10.1126/science.abi5273
- 448 12. Chamie G, Marquez C, Crawford E, et al. SARS-CoV-2 Community Transmission
449 disproportionately affects Latinx population during Shelter-in-Place in San
450 Francisco. *Clin Infect Dis*. Published online August 21, 2020.
451 doi:10.1093/cid/ciaa1234
- 452 13. Marquez C, Kerkhoff AD, Naso J, et al. A multi-component, community-based
453 strategy to facilitate COVID-19 vaccine uptake among Latinx populations: From
454 theory to practice. *PLoS One*. 2021;16(9):e0257111.
455 doi:10.1371/journal.pone.0257111
- 456 14. Abbott Diagnostics. Abbott BinaxNOW COVID-19 Ag Package Insert, version 1.6.
457 Accessed October 20, 2020. <https://www.fda.gov/media/141570/download>
- 458 15. Unidos en Salud. Binax Training Resources. United In Health. Accessed December
459 17, 2020. <https://unitedinhealth.org/binax-training>
- 460 16. Schrom J, Marquez C, Pilarowski G, et al. Direct Comparison of SARS-CoV-2
461 Nasal RT-PCR and Rapid Antigen Test (BinaxNOW™) at a Community Testing
462 Site During an Omicron Surge. *medRxiv*. Published online January 19,
463 2022:2022.01.08.22268954. doi:10.1101/2022.01.08.22268954
- 464 17. Peng J, Liu J, Mann SA, et al. Estimation of Secondary Household Attack Rates for
465 Emergent Spike L452R Severe Acute Respiratory Syndrome Coronavirus 2

- 466 (SARS-CoV-2) Variants Detected by Genomic Surveillance at a Community-Based
467 Testing Site in San Francisco. *Clin Infect Dis.* 2022;74(1):32-39.
468 doi:10.1093/cid/ciab283
- 469 18. Guidance on Isolation and Quarantine for COVID-19 Contact Tracing. Accessed
470 March 6, 2022. [https://www.cdph.ca.gov/Programs/CID/DCDC/Pages/COVID-](https://www.cdph.ca.gov/Programs/CID/DCDC/Pages/COVID-19/Guidance-on-Isolation-and-Quarantine-for-COVID-19-Contact-Tracing.aspx)
471 [19/Guidance-on-Isolation-and-Quarantine-for-COVID-19-Contact-Tracing.aspx](https://www.cdph.ca.gov/Programs/CID/DCDC/Pages/COVID-19/Guidance-on-Isolation-and-Quarantine-for-COVID-19-Contact-Tracing.aspx)
- 472 19. Hui KPY, Ho JCW, Cheung MC, et al. SARS-CoV-2 Omicron variant replication in
473 human bronchus and lung ex vivo. *Nature.* Published online February 1, 2022.
474 doi:10.1038/s41586-022-04479-6
- 475 20. Antonelli M, Capdevila J, Chaudhari A, et al. Optimal symptom combinations to aid
476 COVID-19 case identification: Analysis from a community-based, prospective,
477 observational cohort. *Journal of Infection.* 2021;82(3):384-390.
478 doi:10.1016/j.jinf.2021.02.015
- 479 21. Lanier WA. COVID-19 Testing to Sustain In-Person Instruction and Extracurricular
480 Activities in High Schools — Utah, November 2020–March 2021. *MMWR Morb*
481 *Mortal Wkly Rep.* 2021;70. doi:10.15585/mmwr.mm7021e2
- 482 22. Bilinski A, Ciaranello A, Fitzpatrick MC, et al. SARS-CoV-2 testing strategies to
483 contain school-associated transmission: model-based analysis of impact and cost
484 of diagnostic testing, screening, and surveillance. *medRxiv.* Published online
485 August 10, 2021:2021.05.12.21257131. doi:10.1101/2021.05.12.21257131

- 486 23. Macias Gil R, Marcelin JR, Zuniga-Blanco B, Marquez C, Mathew T, Piggott DA.
487 COVID-19 Pandemic: Disparate Health Impact on the Hispanic/Latinx Population in
488 the United States. *J Infect Dis*. Published online July 30, 2020.
489 doi:10.1093/infdis/jiaa474
- 490 24. US Bureau of Labor Statistics. *2019 National Compensation Survey*.; 2019.
491 <https://www.bls.gov/ncs/ebs/>
- 492 25. Lefferts B. Antigen Test Positivity After COVID-19 Isolation — Yukon-Kuskokwim
493 Delta Region, Alaska, January–February 2022. *MMWR Morb Mortal Wkly Rep*.
494 2022;71. doi:10.15585/mmwr.mm7108a3
- 495 26. Landon E, Bartlett AH, Marrs R, Guenette C, Weber SG, Mina MJ. High Rates of
496 Rapid Antigen Test Positivity After 5 days of Isolation for COVID-19. *medRxiv*.
497 Published online February 2, 2022:2022.02.01.22269931.
498 doi:10.1101/2022.02.01.22269931
- 499 27. Stiefel U, Bhullar D, Zabarsky TF, et al. Healthcare personnel frequently have
500 positive severe acute respiratory syndrome coronavirus 2 (SARS-CoV-2) antigen
501 tests 5 days or more after diagnosis of coronavirus disease 2019 (COVID-19).
502 *Infect Control Hosp Epidemiol*. Published online February 8, 2022:1-2.
503 doi:10.1017/ice.2022.21
- 504 28. Hay JA, Kissler SM, Fauver JR, et al. Viral dynamics and duration of PCR positivity
505 of the SARS-CoV-2 Omicron variant. *medRxiv*. Published online January 14,
506 2022:2022.01.13.22269257. doi:10.1101/2022.01.13.22269257

- 507 29. Kissler SM, Fauver JR, Mack C, et al. Viral Dynamics of SARS-CoV-2 Variants in
508 Vaccinated and Unvaccinated Persons. *New England Journal of Medicine*.
509 2021;385(26):2489-2491. doi:10.1056/NEJMc2102507
- 510 30. Korenkov M, Poopalasingam N, Madler M, et al. Evaluation of a Rapid Antigen Test
511 To Detect SARS-CoV-2 Infection and Identify Potentially Infectious Individuals. *J*
512 *Clin Microbiol*. 2021;59(9):e0089621. doi:10.1128/JCM.00896-21
- 513 31. Puhach O, Adea K, Hulo N, et al. Infectious viral load in unvaccinated and
514 vaccinated patients infected with SARS-CoV-2 WT, Delta and Omicron. *medRxiv*.
515 Published online January 18, 2022:2022.01.10.22269010.
516 doi:10.1101/2022.01.10.22269010

517

518

519

520

521

522

523

524

525

526

527

528

529

530

531

532

533
534
535
536
537
538
539
540
541

Figure Captions:

543

544 **Figure 1:** Proportion of COVID-19 positive clients during Omicron period indicating
545 improvement, no change, or worsening of symptoms at time of test, among
546 symptomatic BinaxNOW positive participants testing within 14 days of symptom onset,
547 A. Overall, B. by Age Group and C. and by Vaccination Status

548

549 **Figure 2:** BinaxNOW positivity among 942 repeat testers with COVID-19 during the
550 Omicron period by day of symptom onset (if symptomatic) or day since initial positive
551 test (if asymptomatic). COVID-19 status between a participant's tests is inferred to be
552 positive (if second test is positive) or with a linearly decaying probability of being
553 positive (if second test is negative). Panel A shows overall, including symptomatic and
554 asymptomatic people with dotted lines indicating upper and lower bounds of sensitivity
555 analysis. Sensitivity analysis assumes participants whose second test is negative either
556 immediately became negative after their first test (lower bound) or remained positive
557 until the day before their second test (upper bound). Panel B shows results stratified by

558 symptom status. Panel C show results stratified by self-report vaccination status as of
559 their first test.

560

561 **Supplementary Figure 1.** Prevalence of selected symptoms among symptomatic
562 people testing positive and negative with the BinaxNOW rapid antigen test during pre-
563 Delta (January 10-May 31, 2021), Delta (June 1, 2021- November 30, 2021), and
564 Omicron period (December 1, 2021-January 30, 2021).

565

566 **Supplementary Figure 2:** BinaxNOW positivity among 942 repeat testers with COVID-
567 19 during the Omicron period. by day of symptom onset (if symptomatic) or day since
568 initial positive test (if asymptomatic). A. Overall, includes symptomatic people and
569 asymptomatic people. B. Stratified by symptom status. Symptomatic include people who
570 report symptoms at the time of their initial positive test and who note a symptom onset
571 date and asymptomatic people include people who do not report symptoms at the time
572 of testing. C. Stratified by self-reported vaccination status.

573

574

575

576

577

578

579

580

581

582

583

584

585

586

587

588

Table 1: Symptoms reported among symptomatic people testing positive and negative with the BinaxNOW rapid antigen test by, A. Variant period: Pre-Delta (January 10-May 31, 2021), Delta (June 1, 2021- November 30, 2021), Omicron Period.(December 1, 2021-January 30,20222)

	Overall (N=18,301)	Pre-Delta (N=5,533)		Delta (N=5,485)		Omicron (N=7,283)		Omicron vs. pre-Delta among positives	Omicron vs. Delta among positives
		Positive (n=1065)	Negative (n=4468)	Positive (n=468)	Negative (n=5017)	Positive (n=3032)	Negative (n=4251)	P-value (B-H corrected)	P-value (B-H corrected)
Symptoms									
Fever	3527 (19.3)	369 (34.7)	672 (15.0)	172 (36.8)	780 (15.6)	921 (30.4)	613 (14.4)	0.010 (0.02)	0.006 (0.015)
Cough	8885 (48.6)	546 (51.3)	1507 (33.7)	281 (60.0)	2356 (47.0)	2044 (67.4)	2151 (50.6)	<0.001 (0.003)	0.002 (0.006)
Shortness of breath	1386 (7.6)	93 (8.7)	409 (9.2)	42 (9.0)	346 (6.9)	241 (8.0)	255 (6.0)	0.42 (0.51)	0.45 (0.52)
Fatigue	3404 (18.6)	176 (16.5)	926 (20.7)	107 (22.9)	879 (17.5)	594 (19.6)	722 (17.0)	0.028 (0.051)	1 (1)
Myalgia	3896 (21.3)	322 (30.2)	978 (21.9)	141 (30.1)	829 (16.5)	868 (28.6)	758 (17.8)	0.32 (0.41)	0.51 (0.56)
Headache	6064 (33.1)	437 (41.0)	1693 (37.9)	167 (35.7)	1420 (28.3)	1075 (35.5)	1272 (29.9)	0.001 (0.003)	0.92 (0.96)
Loss of taste/smell	951 (5.2)	183 (17.2)	207 (4.6)	96 (20.5)	177 (3.5)	160 (5.3)	128 (3.0)	<0.001 (0.003)	<0.001 (0.003)
Sore throat	6570 (35.9)	315 (29.6)	1399 (31.3)	136 (29.1)	1821 (36.3)	1316 (43.4)	1583 (37.2)	<0.001 (0.003)	<0.001 (0.003)
Congestion	6217 (34.0)	294 (27.6)	1216 (27.2)	193 (41.2)	1866 (37.2)	1177 (38.8)	1471 (34.6)	<0.001 (0.003)	0.32 (0.41)
Nausea	1108 (6.1)	75 (7.0)	295 (6.6)	29 (6.2)	324 (6.5)	150 (5.0)	235 (5.5)	0.010 (0.020)	0.25 (0.37)
Diarrhea	1192 (6.5)	65 (6.1)	425 (9.5)	28 (6.0)	304 (6.1)	144 (4.8)	226 (5.3)	0.08 (0.135)	0.25 (0.37)

Abbreviations: B-H corrected= Benjamin-Hochberg method

Table 2: Symptoms reported among symptomatic people testing positive and negative with the BinaxNOW rapid antigen test during the Omicron period (December 1, 2021-January 30,20222), stratified by age group.

	Overall (N=7,283)	Age ≥18 (N=5779)		Age 12-17 (N=664)		Age <12 (N=840)		Age ≥18 vs. 12-17 among positives	Age ≥18 vs. <12 Among positives
		Positive (n=2419)	Negative (n=3360)	Positive (n=311)	Negative (n=353)	Positive (n=302)	Negative (n=538)	P-value (B-H corrected)	P-value (B-H corrected)
Symptoms									
Fever	1534 (21.1)	733 (30.3)	492 (14.6)	84 (27.0)	52 (14.7)	104 (34.4)	69 (12.8)	0.23 (0.46)	0.14 (0.31)
Cough	4195 (57.6)	1626 (67.2)	1617 (48.1)	218 (70.1)	186 (52.7)	200 (66.2)	348 (64.7)	0.31 (0.55)	0.73 (0.90)
Shortness of breath	496 (6.8)	209 (8.6)	221 (6.6)	22 (7.1)	25 (7.1)	10 (3.3)	9 (1.7)	0.35 (0.55)	0.001 (0.002)
Fatigue	1316 (18.1)	538 (22.2)	664 (19.8)	33 (10.6)	33 (9.4)	23 (7.6)	25 (4.7)	<0.001 (0.002)	<0.001 (0.002)
Myalgia	1626 (22.3)	779 (32.2)	681 (20.3)	63 (20.3)	51 (14.5)	26 (8.6)	26 (4.8)	<0.001 (0.002)	<0.001 (0.002)
Headache	2347 (32.2)	898 (37.1)	1118 (33.3)	124 (39.9)	99 (28.1)	53 (17.6)	55 (10.2)	0.35 (0.55)	<0.001 (0.002)
Loss of taste/smell	288 (4.0)	141 (5.8)	112 (3.3)	18 (5.8)	12 (3.4)	1 (0.3)	4 (0.7)	0.98 (0.98)	<0.001 (0.002)
Sore throat	2899 (39.8)	1099 (45.4)	1364 (40.6)	140 (45.0)	121 (34.3)	77 (25.5)	98 (18.2)	0.89 (0.93)	<0.001 (0.002)
Congestion	2648 (36.4)	960 (39.7)	1156 (34.4)	126 (40.5)	111 (31.4)	91 (30.1)	204 (37.9)	0.78 (0.90)	0.001 (0.002)
Nausea	385 (5.3)	118 (4.9)	182 (5.4)	16 (5.1)	21 (6.0)	16 (5.3)	32 (6.0)	0.84 (0.92)	0.75 (0.90)
Diarrhea	370 (5.1)	119 (4.9)	71 (5.1)	12 (3.9)	38 (10.8)	13 (4.3)	17 (3.2)	0.41 (0.60)	0.64 (0.88)

Abbreviations: B-H corrected= Benjamin-Hochberg method

Table 3: Symptoms reported among symptomatic people testing positive and negative with the BinaxNOW rapid antigen test during the Omicron period (December 1, 2021-January 30,20222), stratified by vaccination status.

	Overall (N=5424)	Unvaccinated (N=233)		Vaccinated, not boosted (N=3817)		Vaccinated, Boosted (N=1374)		Boosted vs. Unvaccinated among positives	Boosted vs. Vaccinated, not boosted among positives
		Positive (n=116)	Negative (n=117)	Positive (n=1705)	Negative (n=2112)	Positive (n=432)	Negative (n=942)	P-value (B-H corrected)	P-value (B-H corrected)
Symptoms									
Fever	1162 (21.4)	42 (36.2)	16 (13.7)	559 (32.8)	343 (16.2)	97 (22.5)	105 (11.2)	0.003 (0.01)	<0.001 (0.01)
Cough	3060 (56.4)	71 (61.2)	53 (45.3)	1191 (69.9)	1086 (51.4)	268 (62.0)	391 (41.5)	0.87 (1)	0.002 (0.01)
Shortness of breath	408 (7.5)	10 (8.6)	7 (6.0)	150 (8.8)	150 (7.1)	36 (8.3)	55 (4.8)	0.92 (1)	0.76 (0.93)
Fatigue	1144 (21.1)	33 (28.5)	25 (21.4)	372 (21.8)	410 (19.4)	104 (24.1)	200 (21.2)	0.33 (0.50)	0.31 (0.50)
Myalgia	1383 (25.5)	41 (35.3)	25 (21.4)	580 (34.0)	440 (20.8)	115 (26.6)	182 (19.3)	0.06 (0.19)	0.003 (0.01)
Headache	1921 (35.4)	49 (42.2)	42 (35.9)	646 (37.9)	719 (34.0)	153 (35.4)	312 (33.1)	0.18 (0.40)	0.34 (0.50)
Loss of taste/smell	240 (4.4)	12 (10.3)	7 (6.0)	99 (5.8)	76 (3.6)	25 (5.8)	21 (2.2)	0.08 (0.22)	0.99 (1)
Sore throat	2325 (42.9)	48 (41.4)	34 (29.1)	776 (45.5)	850 (40.3)	208 (48.2)	409 (43.4)	0.20 (0.40)	0.33 (0.50)
Congestion	2019 (37.2)	40 (34.5)	32 (27.4)	668 (39.2)	701 (33.2)	207 (47.9)	371 (39.4)	0.010 (0.04)	0.001 (0.01)
Nausea	290 (5.4)	7 (6.0)	6 (5.1)	89 (5.2)	119 (5.6)	18 (4.2)	51 (5.4)	0.39 (0.50)	0.37 (0.50)
Diarrhea	277 (5.1)	10 (8.6)	2 (1.7)	83 (4.9)	112 (5.3)	21 (4.9)	49 (5.2)	0.12 (0.29)	1 (1)

Abbreviations: B-H corrected= Benjamin-Hochberg method

Supplementary Table 1: Demographics of symptomatic people seeking testing from January 2020-January 2021, by variant-period.

	Overall (N=18,301)	Pre-Delta (N=5,533)	Delta (N=5,485)	Omicron (N=7,283)	P-value
Age Category (years)					
<5	684 (3.7)	113 (2.0)	285 (5.2)	286 (3.9)	<0.001
5-11.9	1510 (8.3)	169 (3.1)	787 (14.4)	554 (7.6)	
12-17.9	1343 (7.3)	274 (5.0)	405 (7.4)	664 (9.1)	
18-30	4985 (27.2)	1725 (31.2)	1385 (25.3)	1875 (25.7)	
31-50	7020 (38.4)	2323 (42.0)	1909 (34.8)	2788 (28.3)	
51-64	2215 (12.1)	735 (13.3)	570 (10.4)	910 (12.5)	
65 and older	544 (3.0)	194 (3.5)	144 (2.6)	206 (2.8)	
Gender^a					
Male	8513 (46.9)	2643 (47.8)	2517 (46.4)	3353 (46.5)	<0.001
Female	9394 (51.7)	2761 (49.9)	2830 (52.2)	3803 (52.7)	
Non-binary	234 (1.3)	106 (1.9)	73 (1.4)	55 (0.8)	
Prefer not to say	27 (0.2)	23 (0.4)	4 (0.1)	0	
Ethnicity					
Asian	1032 (6.1)	269 (6.1)	402 (7.5)	361 (5.0)	<0.001
Black/African American	256 (2.1)	145 (3.3)	112 (2.1)	99 (1.4)	
Latinx/Hispanic	11856 (69.7)	3120 (70.2)	3408 (63.3)	5328 (74.3)	
White/Caucasian	2157 (12.7)	618 (13.9)	926 (17.2)	613 (8.5)	
Other	1606 (9.5)	295 (6.6)	536 (10.0)	775 (10.8)	
Vaccine Status^c					<0.001
Not Vaccinated	874 (16.2)	167 (93.3)	67 (39.7)	640 (12.7)	
Partially Vaccinated	1248 (23.1)	9 (5.0)	51 (30.2)	1188 (23.5)	
Primary Vaccine Series	2032 (37.6)	3 (1.7)	46 (27.2)	1983 (39.2)	
Primary Vaccine Series with Booster	1249 (24.8)	-- ^d	5 (3.0)	1244 (24.6)	
Vaccine Status (over 18 years)^e					<0.001
Not Vaccinated	388 (9.3)	137 (92.6)	40 (29.2)	211 (5.4)	
Partially Vaccinated	964 (23.0)	8 (6.1)	48 (35.0)	908 (23.3)	
Primary Vaccine Series	1618 (38.6)	3 (2.0)	44 (32.1)	1571 (40.2)	
Primary Vaccine Series with Booster	1220 (29.1)	-- ^d	5 (3.6)	1215 (31.1)	

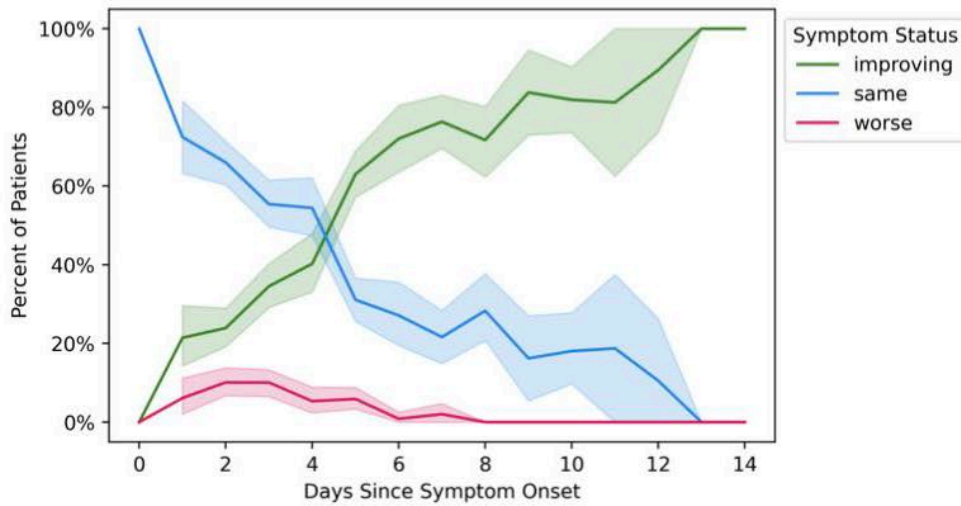
^a133 missing responses ^b1294 missing responses ^c2899 missing responses ^dBooster shots were not available at any point during this period ^e1657 missing responses

Supplementary Table 2. Proportion symptomatic participants reporting only one of the following symptoms the time of testing during the Omicron period ((December 1, 2021-January 30, 2021)

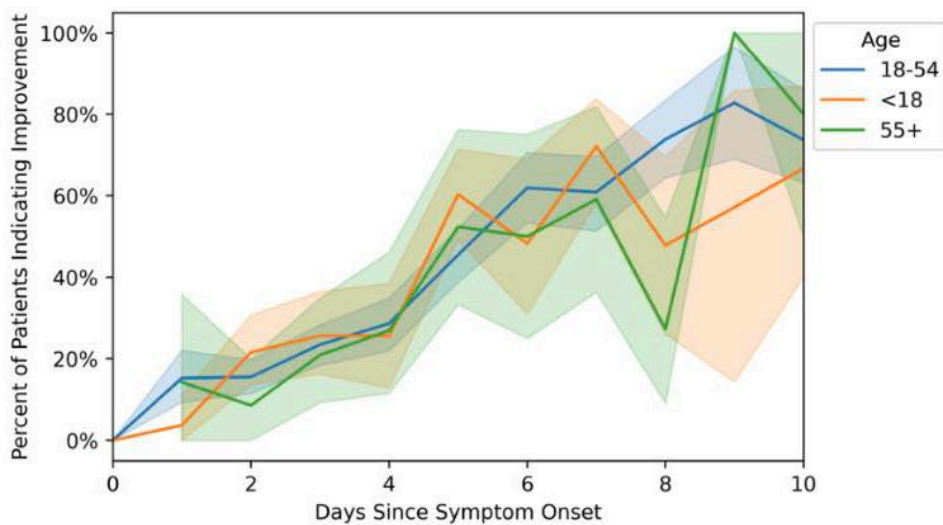
Symptom Type	Overall (N=3032)	Age ≥18 (N=2419)	Age 12-17 (N=311)	Age <12 (N=302)	P-value
Fever	74 (2.4)	45 (1.9)	3 (1.0)	26 (8.6)	<0.001
Cough	477 (15.7)	346 (14.3)	48 (15.4)	83 (27.5)	0.030
Shortness of breath	4 (0.1)	4 (0.2)	0	0	1
Fatigue	12 (0.4)	10 (0.4)	0	2 (0.7)	0.41
Myalgia	25 (0.8)	22 (0.9)	2 (0.6)	1 (0.3)	0.76
Headache	51 (1.7)	37 (1.5)	11 (3.5)	3 (1.0)	0.036
Loss of taste/smell	5 (0.2)	4 (0.2)	1 (0.3)	0	0.68
Sore throat	168 (5.5)	147 (6.1)	17 (5.5)	4 (1.3)	0.001
Congestion	140 (4.6)	100 (4.1)	17 (5.5)	23 (7.6)	0.019
Nausea	4 (0.1)	3 (0.1)	0	1 (0.3)	0.39
Diarrhea	2 (0.1)	1 (0.0)	0	1 (0.3)	0.20
<i>Any of the above symptoms in isolation</i>	962 (31.7)	719 (29.7)	99 (31.8)	144 (47.7)	<0.001

Figure 1: Proportion of COVID-19 positive clients during Omicron period indicating improvement, no change, or worsening of symptoms at time of test, among symptomatic BinaxNOW positive participants testing within 14 days of symptom onset, A. Overall, B. by Age Group and C. and by Vaccination Status

A.



B.



C.

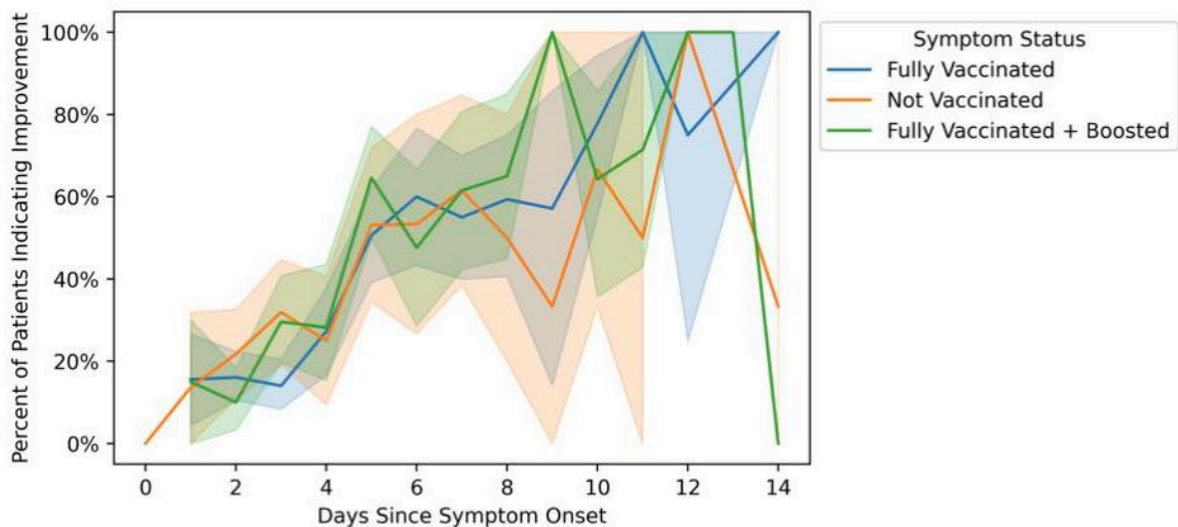


Figure 2: BinaxNOW positivity among 942 repeat testers with COVID-19 during the Omicron period by day of symptom onset (if symptomatic) or day since initial positive test (if asymptomatic). COVID-19 status between a participant's tests is inferred to be positive (if second test is positive) or with a linearly decaying probability of being positive (if second test is negative). Panel A shows overall, including symptomatic and asymptomatic people with dotted lines indicating upper and lower bounds of sensitivity analysis. Sensitivity analysis assumes participants whose second test is negative either immediately became negative after their first test (lower bound) or remained positive until the day before their second test (upper bound). Panel B shows results stratified by symptom status. Panel C show results stratified by self-report vaccination status as of their first test.

