

Supplemental Information for:
Death by Round Numbers and Sharp Thresholds: How to Avoid Dangerous AI EHR Recommendations

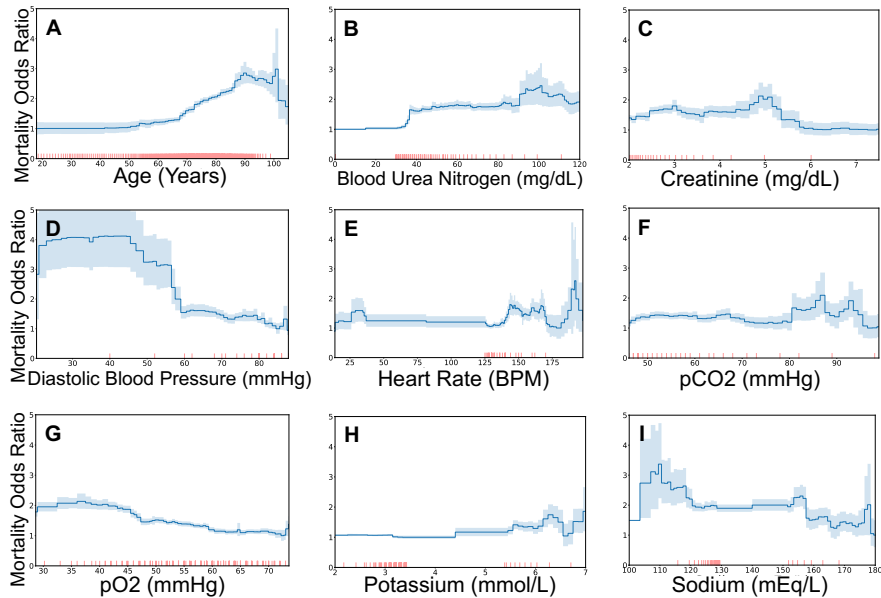


Figure S1: Mortality risks of patients hospitalized with pneumonia display several treatment effects. In all plots, we display the odds ratio after correcting for all other patient risk factors. Shaded regions indicate 95% confidence intervals, and each red tick mark along the horizontal axis denotes 10 patients. In this dataset, values in the reference (healthy) range were not recorded. **(A)** Mortality risk rises gradually with increased age, with a change in slope at age 65, a rapid rise in risk approaching age 90, a counter-causal plateau in risk for ages 90-100, and a discontinuous drop in risk for at age 100. **(B)** Mortality risk is low for blood urea nitrogen below 30 mg/dL and then rises rapidly to a plateau starting at 35 mg/dL. **(C)** Mortality risk is lowest for several elevated levels of serum creatinine, which indicates kidney dysfunction. **(D)** Mortality risk rises slowly as diastolic blood pressure decreases, with a rapid rise at 60 mmHg followed by a plateau in risk. This pattern would agree with treatment decisions based on a blood pressure of 60mmHg, and the statistically-optimal threshold may be lower than 60mmHg. **(E)** Mortality risk rises as heart rate increases above 125 BPM, but plateaus from 140-170 BPM, and drops at 170 BPM. This risk profile indicates clinical decisions that change based on tachycardia levels of 140 and 170 BPM and a potential improvement to clinical practice to benefit patients with heart rate 140-170 BPM. **(F)** At 80 mmHg pCO₂, there is a jump in risk followed by a plateau and slow decline. This suggests treatment decisions could be enhanced to flatten this risk curve. **(G)** Mortality risk changes smoothly with pO₂, with a gradual increase in risk as pO₂ decreases. This indicates well-tuned treatment decisions that do not exhibit strong potential for further refinement by changing thresholds. **(H)** Mortality risk rises gradually for elevated levels of serum potassium, with a small rise in risk at 5.5mmol/L followed by a plateau in risk. This suggests a treatment threshold at 5.5 mmol/L. **(I)** As expected, mortality risk for patients with hyponatremia <120 mEq/L is elevated. However, mortality risk for patients with severe hypernatremia >155 mEq/L is reduced, suggesting that clinical practice could be refined to benefit patients with moderate hypernatremia.

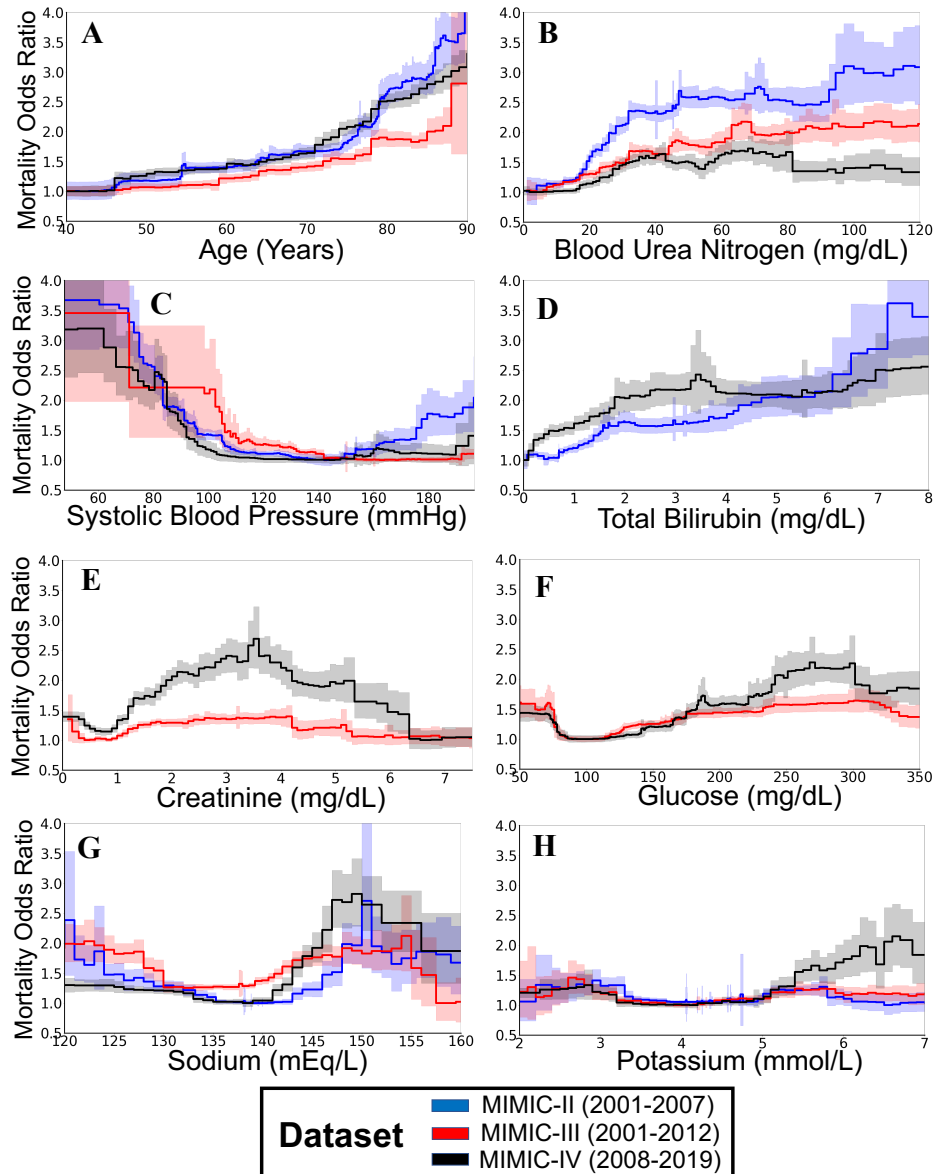


Figure S2: The effects of clinical decisions are visible in mortality risk curves for patients in intensive care units, and have changed over time. In all plots, we show the risk associated with each risk factor after correcting for all other observable factors of patient risk using a generalized additive model (with 95% confidence intervals shaded). The three datasets span three decades of intensive care at a single hospital system. The impacts of creatinine, sodium, age, and blood urea nitrogen are studied in detail in the main text. (A-D) Biomarkers that display discontinuous impacts of treatment effects, including round number ages, blood urea nitrogen at 45mg/dL, systolic blood pressure below 100 mmHg, and Bilirubin above 2mg/dL. (E-H) Biomarkers which display counter-causal impacts of treatment effects, including elevated creatinine above 6mg/dL corresponding to reduced mortality risk, elevated glucose above 250 or 300 mg/dL corresponding to reduced mortality risk, hypernatremia above 150 mEq/L corresponding to reduced mortality risk (and in the oldest dataset, severe hyponatremia below 120 mEq/L also corresponded to reduced mortality risk), and elevated potassium (above 6 mmol/L) corresponding to increased mortality risk only in the newest dataset.