

Appendix

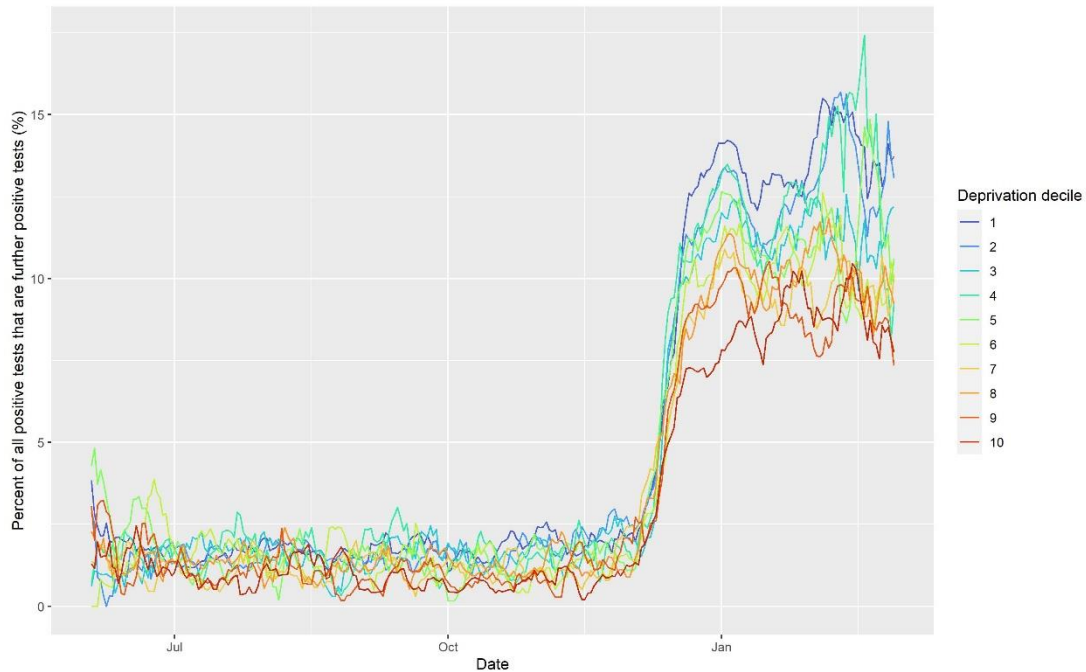


Figure A: Seven day moving average for the percentage of all registered positive tests that were identified as a subsequent infection ($\geq 2^{\text{nd}}$ positive registered test more than 90 days apart) by decile of deprivation (3rd June 2021 – 2nd February 2022).

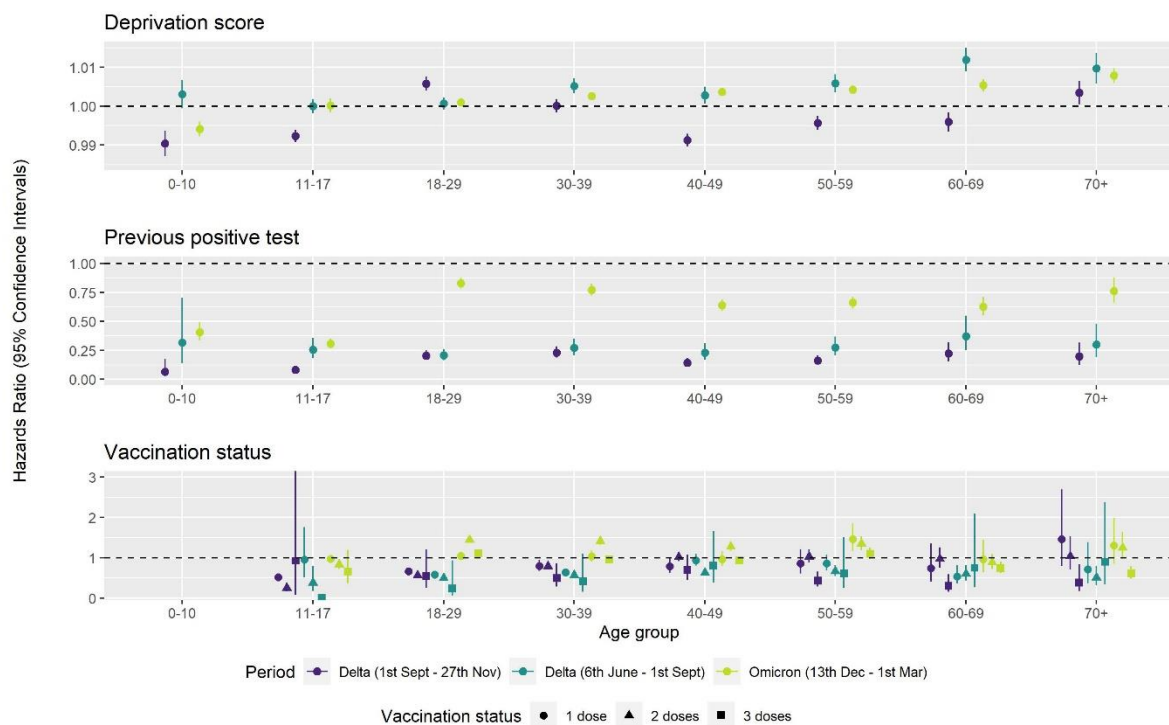


Figure B: Age-stratified Cox regression models predicting time to registered positive test. Note: Coefficients for vaccination status for children aged 0-10 were not included, since due to low numbers model fit was not possible. Models are unadjusted for other covariates (model adjustment does not significantly change patterns).

Table A: Percentage of all participants in Cheshire and Merseyside who registered a negative COVID-19 test during each study period (i.e., within each outcome period).

	Delta (3rd June - 1st Sept 2021)			Delta (1st Sept - 27th Nov 2021)			Omicron (13th Dec - 2nd Feb 2022)		
	All residents	Negative test	Influenza vaccinated	All residents	Negative test	Influenza vaccinated	All residents	Negative test	Influenza vaccinated
Unvaccinated	24.4	66.4	28.5	27.9	60.3	38.2	19.9	47.8	27.0
1 dose	31.1	73.8	33.3	33.1	60.9	34.4	41.3	69.5	57.2
2 doses	32.2	76.0	30.6	36.0	70.4	34.8	30.4	60.3	31.8
3 doses	40.9	84.0	38.3	44.3	77.8	42	34.3	72.2	33.1
No previous infection	27.7	71.7	29.8	32.1	67.2	34.9	27.4	62.2	31.3
Previous infection	38.1	77.6	40.2	41.1	69.9	43.9	37.4	67.1	40.3
Most deprived decile (1)	22.8	66.9	26.1	26.1	62.7	29.5	23.6	59.3	27.2
Decile 2	26.0	70.6	28.7	30.4	66.3	33.3	26.7	61.5	30.1
Decile 3	27.7	72.3	30.2	31.8	67.7	34.2	28.0	62.5	31.5
Decile 4	28.3	72.7	31.0	32.8	67.5	35.9	28.4	63.0	31.9
Decile 5	29.2	73.7	30.6	33.7	67.8	35.4	29.6	63.3	32.4
Decile 6	30.9	73.5	31.7	35.8	69.3	37.1	31.3	64.3	33.8
Decile 7	31.6	74.0	31.6	36.5	69.3	37.6	31.8	64.1	34.1
Decile 8	32.1	74.3	32.1	37.2	69.2	38.0	32.3	64.6	34.4
Decile 9	32.2	73.9	32.0	38.4	70.3	38.6	33.1	64.8	35.4
Least deprived decile (10)	34.1	76.2	33.6	40.1	70.9	40.5	34.5	65.8	37.1

Characteristics are calculated at baseline for each time period (and not time varying here).

Table B: Percentage of all participants with a registered positive test by exposure variables.

	Delta (3rd June - 1st Sept 2021)			Delta (1st Sept - 27th Nov 2021)			Omicron (13th Dec - 28th Feb 2022)		
	All residents	Negative test	Flu vaccinated	All residents	Negative test	Flu vaccinated	All residents	Negative test	Flu vaccinated
<i>Vaccination status</i>									
Unvaccinated	4.5	7.0	4.1	5.9	10.1	10.0	8.6	18.4	13.6
1 dose	3.1	4.0	2.4	2.7	3.6	2.9	12.6	18.8	14.6
2 doses	1.9	2.9	1.5	3.5	4.7	2.9	13.8	19.7	10.6
3 doses	2.5	3.0	1.8	3.9	4.3	3.4	8.6	14.7	7.5
<i>Previous infection</i>									
No	3.5	4.9	2.3	4.7	6.5	4.7	10.9	18.4	10.1
Yes	0.7	1.2	0.4	0.6	1.0	0.6	8.4	12.5	6.6
<i>Deprivation level</i>									
Most deprived decile (1)	3.6	5.3	2.7	3.6	4.9	3.8	9.9	18.8	9.4
Decile 2	3.5	4.9	2.4	4.2	5.4	4.4	10.7	18.5	9.9
Decile 3	3.4	4.6	2.3	4.3	5.6	4.4	10.9	17.9	10.1
Decile 4	3.5	4.9	2.5	4.2	5.7	4.5	10.7	18.5	10.0
Decile 5	3.4	4.4	2.2	4.3	5.5	4.3	10.7	17.8	9.6
Decile 6	3.1	4.1	2.0	4.6	6.0	4.6	10.7	16.7	9.6
Decile 7	3.1	4.3	2.0	4.6	5.9	4.3	10.6	16.6	9.6
Decile 8	3.2	4.3	2.1	4.7	5.9	4.6	10.7	16.4	9.5
Decile 9	3.0	3.9	1.9	5.0	6.5	5.0	10.8	16.3	9.5
Least deprived decile (10)	2.9	4.1	1.8	5.1	6.7	5.1	10.6	16.2	9.8

Note: Values are percentages. Characteristics are calculated at baseline for each time period.

Table C: Model results when redefining the measure for previous positive test (i.e., excluding all individuals with a registered positive test within 90 days of the start of the period) to assess the extent of immortal time bias.

	Delta (3rd June - 1st Sept 2021)			Delta (1st Sept - 27th Nov 2021)			Omicron (13th Dec - 2nd Feb 2022)		
	HR	LCI	UCI	HR	LCI	UCI	HR	LCI	UCI
<u>Individuals who were registered a negative test</u>									
<i>Unadjusted</i>									
Previous infection	0.2323	0.2065	0.2612	0.1900	0.1718	0.2101	0.8719	0.8462	0.8984
<i>Adjusted*</i>									
Unvaccinated	Reference			Reference			Reference		
1 dose	0.6428	0.6024	0.6860	0.6798	0.6322	0.7309	1.0244	0.9745	1.0768
2 doses	0.5324	0.5067	0.5595	0.6470	0.6201	0.6752	1.2945	1.2532	1.3371
3 doses	0.5201	0.3549	0.7622	0.3188	0.2546	0.3992	0.8888	0.8574	0.9212
Previous infection	0.2195	0.1948	0.2474	0.1884	0.1705	0.2083	0.7069	0.6860	0.7284
Deprivation Score	1.0020	1.0012	1.0028	0.9961	0.9954	0.9968	1.0011	1.0007	1.0016
<u>Individuals who were flu vaccinated</u>									
<i>Unadjusted</i>									
Previous infection	0.1835	0.1592	0.2115	0.1680	0.1508	0.1871	0.8229	0.7954	0.8513
<i>Adjusted*</i>									
Unvaccinated	Reference			Reference			Reference		
1 dose	0.6621	0.6073	0.7219	0.5239	0.4645	0.5910	0.9284	0.8832	0.9758
2 doses	0.5494	0.5130	0.5884	0.5959	0.5620	0.6319	1.1204	1.0643	1.1794
3 doses	0.6313	0.4621	0.8624	0.2773	0.2312	0.3326	0.8858	0.8421	0.9318
Previous infection	0.1597	0.1384	0.1842	0.1531	0.1375	0.1704	0.6276	0.6066	0.6493
Deprivation Score	1.0031	1.0024	1.0038	0.9925	0.9920	0.9930	0.9987	0.9983	0.9991

Definitions: HR = Hazard Ratio, LCI = 95% Lower Confidence Interval, UCI = 95% Upper Confidence Interval

Note: Deprivation score is numerical, with increasing values representing higher levels of deprivation

* Adjusted for age (10-year age bands), sex, ethnicity, long-term illness, number of tests in previous month, time varying vaccination status (with an interaction to time), previous infection status (and interaction to time), and 2019 Index of Multiple Deprivation score

Table D: Results for a Cox regression predicting time to a registered positive test by deprivation decile for individuals who had registered a negative lateral flow test within a month of the time period start date (as a proxy for testing engaged).

	Delta (3rd June - 1st Sept 2021)			Delta (1st Sept - 27th Nov 2021)			Omicron (13th Dec - 2nd Feb 2022)		
	HR	LCI	UCI	HR	LCI	UCI	HR	LCI	UCI
<i>Unadjusted</i>									
Most deprived (1)	Reference			Reference			Reference		
Decile 2	0.9217	0.8708	0.9757	1.0978	1.0414	1.1573	0.9487	0.9186	0.9797
Decile 3	0.8636	0.8096	0.9212	1.1330	1.0702	1.1995	0.9224	0.8902	0.9556
Decile 4	0.9274	0.8693	0.9894	1.1468	1.0819	1.2157	0.9532	0.9192	0.9885
Decile 5	0.8538	0.7989	0.9125	1.1086	1.0457	1.1752	0.9206	0.8878	0.9545
Decile 6	0.7785	0.7266	0.8341	1.1997	1.1331	1.2702	0.8262	0.7952	0.8583
Decile 7	0.8030	0.7529	0.8564	1.2087	1.1445	1.2765	0.7959	0.7673	0.8255
Decile 8	0.8085	0.7605	0.8594	1.1922	1.1317	1.2558	0.8191	0.7917	0.8476
Decile 9	0.7307	0.6845	0.7800	1.3284	1.2616	1.3988	0.7915	0.7639	0.8200
Least deprived (10)	0.7634	0.7180	0.8118	1.3684	1.3029	1.4371	0.7344	0.7095	0.7603
<i>Adjusted*</i>									
Most deprived (1)	Reference			Reference			Reference		
Decile 2	0.9609	0.9084	1.0163	1.1139	1.0572	1.1736	0.9891	0.9575	1.0217
Decile 3	0.9250	0.8677	0.9860	1.1360	1.0737	1.2019	0.9765	0.9422	1.0121
Decile 4	0.9849	0.9239	1.0500	1.1805	1.1144	1.2506	1.0121	0.9756	1.0500
Decile 5	0.9364	0.8769	1.0000	1.1334	1.0698	1.2008	1.0009	0.9649	1.0383
Decile 6	0.8918	0.8327	0.9551	1.1800	1.1153	1.2485	0.9321	0.8966	0.9689
Decile 7	0.9398	0.8814	1.0021	1.1884	1.1258	1.2544	0.9129	0.8796	0.9474
Decile 8	0.9329	0.8779	0.9914	1.1719	1.1130	1.2339	0.9416	0.9094	0.9750

Decile 9	0.8518	0.7980	0.9091	1.2620	1.1991	1.3282	0.9241	0.8912	0.9582
Least deprived (10)	0.8925	0.8392	0.9493	1.2659	1.2056	1.3292	0.8804	0.8495	0.9123

Definitions: HR = Hazard Ratio, LCI = 95% Lower Confidence Interval, UCI = 95% Upper Confidence Interval

* Adjusted for age (10-year age bands), sex, ethnicity, long-term illness, number of tests in previous month, time varying vaccination status (with an interaction to time), previous infection status (and interaction to time), and 2019 Index of Multiple Deprivation score

Table E: Results for a Cox regression predicting time to a registered positive test by deprivation decile for individuals who had received a flu vaccination within a year of the time period start date (as a proxy for healthcare engaged).

	Delta (3rd June - 1st Sept 2021)			Delta (1st Sept - 27th Nov 2021)			Omicron (13th Dec - 2nd Feb2022)		
	HR	LCI	UCI	HR	LCI	UCI	HR	LCI	UCI
<i>Unadjusted</i>									
Most deprived (1)	Reference			Reference			Reference		
Decile 2	0.9004	0.8570	0.9460	1.1614	1.1176	1.2070	1.0346	1.0020	1.0683
Decile 3	0.8629	0.8168	0.9116	1.1747	1.1267	1.2246	1.0413	1.0056	1.0781
Decile 4	0.9151	0.8651	0.9680	1.2129	1.1620	1.2661	1.0163	0.9796	1.0544
Decile 5	0.8332	0.7875	0.8816	1.1427	1.0951	1.1925	1.0348	0.9988	1.0721
Decile 6	0.7645	0.7217	0.8099	1.2144	1.1653	1.2655	0.9827	0.9482	1.0184
Decile 7	0.7489	0.7092	0.7909	1.1482	1.1034	1.1948	0.9514	0.9195	0.9844
Decile 8	0.7958	0.7564	0.8372	1.2331	1.1880	1.2799	0.9739	0.9430	1.0058
Decile 9	0.6943	0.6576	0.7332	1.3341	1.2856	1.3844	0.9550	0.9239	0.9871
Least deprived (10)	0.6664	0.6322	0.7024	1.3712	1.3235	1.4206	0.9226	0.8935	0.9526
<i>Adjusted*</i>									
Most deprived (1)	Reference			Reference			Reference		
Decile 2	0.9392	0.8937	0.9871	1.2106	1.1652	1.2577	1.0488	1.0154	1.0832
Decile 3	0.9221	0.8725	0.9746	1.2485	1.1980	1.3011	1.0655	1.0286	1.1037
Decile 4	1.0028	0.9476	1.0613	1.3338	1.2784	1.3918	1.0633	1.0244	1.1037
Decile 5	0.9374	0.8855	0.9924	1.2878	1.2346	1.3434	1.0938	1.0551	1.1339
Decile 6	0.8715	0.8222	0.9238	1.3767	1.3215	1.4341	1.0511	1.0135	1.0900

Decile 7	0.8714	0.8245	0.9209	1.3257	1.2743	1.3791	1.0319	0.9965	1.0684
Decile 8	0.9279	0.8814	0.9770	1.4323	1.3802	1.4864	1.0599	1.0255	1.0955
Decile 9	0.8121	0.7685	0.8583	1.5363	1.4806	1.5941	1.0438	1.0089	1.0799
Least deprived (10)	0.7759	0.7353	0.8187	1.5405	1.4868	1.5962	1.0061	0.9734	1.0399

Definitions: HR = Hazard Ratio, LCI = 95% Lower Confidence Interval, UCI = 95% Upper Confidence Interval

* Adjusted for age (10-year age bands), sex, ethnicity, long-term illness, number of tests in previous month, time varying vaccination status (with an interaction to time), previous infection status (and interaction to time), and 2019 Index of Multiple Deprivation score

Table F: Results for a Cox regression predicting time to a registered positive test for all residents in Cheshire and Merseyside.

	Delta (3rd June - 1st Sept 2021)			Delta (1st Sept - 27th Nov 2021)			Omicron (13th Dec – 28 th Feb 2022)		
	HR	LCI	UCI	HR	LCI	UCI	HR	LCI	UCI
<i>Unadjusted</i>									
Unvaccinated	Reference			Reference			Reference		
1 dose	0.7395	0.7257	0.7536	0.5135	0.4992	0.5283	1.6952	1.6582	1.7330
2 doses	0.4486	0.4411	0.4561	0.7058	0.6972	0.7146	2.4364	2.4064	2.4667
3 doses	0.5793	0.4778	0.7023	0.5816	0.5162	0.6553	1.1328	1.1179	1.1478
Previous infection	0.2370	0.2236	0.2513	0.1493	0.1419	0.1572	0.8050	0.7928	0.8175
Deprivation Score	1.0031	1.0028	1.0034	0.9943	0.9940	0.9946	0.9994	0.9991	0.9996
<i>Adjusted*</i>									
Unvaccinated	Reference			Reference			Reference		
1 dose	0.8250	0.8070	0.8434	0.8206	0.7957	0.8463	1.4238	1.3906	1.4579
2 doses	0.7432	0.7275	0.7592	1.1416	1.1204	1.1632	2.1293	2.0981	2.1609
3 doses	0.8262	0.6800	1.0037	0.9852	0.8773	1.1064	1.6127	1.5844	1.6415
Previous infection	0.2001	0.1886	0.2124	0.1300	0.1235	0.1369	0.6278	0.6181	0.6376
Deprivation Score	0.9998	0.9995	1.0001	0.9934	0.9932	0.9937	0.9985	0.9983	0.9987

Definitions: HR = Hazard Ratio, LCI = 95% Lower Confidence Interval, UCI = 95% Upper Confidence Interval

Note: Deprivation score is numerical, with increasing values representing higher levels of deprivation

* Adjusted for age (10-year age bands), sex, ethnicity, long-term illness, number of tests in previous month, time varying vaccination status (with an interaction to time), previous infection status (and interaction to time), and 2019 Index of Multiple Deprivation score

Table G: Results for a Cox regression predicting time to a registered positive test for people aged 65 years and over who had received a flu vaccination within a year of the time period start date (as a proxy for healthcare engaged).

	Delta (3rd June - 1st Sept 2021)			Delta (1st Sept - 27th Nov 2021)			Omicron (13th Dec - 2nd Feb 2022)		
	HR	LCI	UCI	HR	LCI	UCI	HR	LCI	UCI
<i>Unadjusted</i>									
Unvaccinated	Reference			Reference			Reference		
1 dose	0.3643	0.2442	0.5435	1.0196	0.6243	1.6653	1.2246	1.1274	1.3301
2 doses	0.4078	0.3160	0.5264	1.4593	1.0517	2.0248	1.4305	1.3583	1.5064
3 doses	0.5008	0.2923	0.8580	0.3964	0.2582	0.6088	0.7568	0.7271	0.7878
Previous infection	0.2710	0.2035	0.3608	0.1484	0.1106	0.1991	0.6116	0.5749	0.6507
Deprivation Score	1.0097	1.0083	1.0112	1.0011	0.9999	1.0022	1.0011	1.0003	1.0018
<i>Adjusted*</i>									
Unvaccinated	Reference			Reference			Reference		
1 dose	0.3465	0.2323	0.5170	1.0498	0.6433	1.7132	0.9742	0.8867	1.0703
2 doses	0.4488	0.3473	0.5799	1.3987	1.0080	1.9410	1.1899	1.0768	1.3150
3 doses	0.5665	0.3305	0.9711	0.4208	0.2748	0.6444	0.9631	0.8729	1.0628
Previous infection	0.2299	0.1725	0.3064	0.1207	0.0904	0.1611	0.4668	0.4385	0.4969
Deprivation Score	1.0087	1.0072	1.0103	1.0009	0.9997	1.0020	0.9992	0.9984	1.0000

Definitions: HR = Hazard Ratio, LCI = 95% Lower Confidence Interval, UCI = 95% Upper Confidence Interval

Note: Deprivation score is numerical, with increasing values representing higher levels of deprivation

* Adjusted for age (10-year age bands), sex, ethnicity, long-term illness, number of tests in previous month, time varying vaccination status (with an interaction to time), previous infection status (and interaction to time), and 2019 Index of Multiple Deprivation score