

1 **Household transmission of SARS-CoV-2 from adult index cases living with**  
2 **and without HIV in South Africa, 2020-2021: a case-ascertained,**  
3 **prospective observational household transmission study**

4 **Author list**

- 5 Jackie Kleynhans, MPH (Centre for Respiratory Diseases and Meningitis, National Institute for Communicable Diseases of the National  
6 Health Laboratory Service, Johannesburg, South Africa. School of Public Health, Faculty of Health Sciences, University of the  
7 Witwatersrand, Johannesburg, South Africa.)
- 8 Sibongile Walaza, PhD (Centre for Respiratory Diseases and Meningitis, National Institute for Communicable Diseases of the National  
9 Health Laboratory Service, Johannesburg, South Africa. School of Public Health, Faculty of Health Sciences, University of the  
10 Witwatersrand, Johannesburg, South Africa.)
- 11 Neil A. Martinson, MD (Perinatal HIV Research Unit (PHRU), University of the Witwatersrand, Johannesburg, South Africa. Johns  
12 Hopkins University Center for TB Research, Baltimore, Maryland, United States of America.)
- 13 Mzimasi Neti, MPH (Centre for Respiratory Diseases and Meningitis, National Institute for Communicable Diseases of the National Health  
14 Laboratory Service, Johannesburg, South Africa.)
- 15 Prof Anne von Gottberg, PhD (Centre for Respiratory Diseases and Meningitis, National Institute for Communicable Diseases of the  
16 National Health Laboratory Service, Johannesburg, South Africa. School of Pathology, Faculty of Health Sciences, University of  
17 the Witwatersrand, Johannesburg, South Africa.)
- 18 Jinal N. Bhiman, PhD (Centre for Respiratory Diseases and Meningitis, National Institute for Communicable Diseases of the National  
19 Health Laboratory Service, Johannesburg, South Africa. School of Pathology, Faculty of Health Sciences, University of the  
20 Witwatersrand, Johannesburg, South Africa.)
- 21 Dylan Toi, MD (Centre for Respiratory Diseases and Meningitis, National Institute for Communicable Diseases of the National Health  
22 Laboratory Service, Johannesburg, South Africa.)
- 23 Daniel G. Amoako, PhD (Centre for Respiratory Diseases and Meningitis, National Institute for Communicable Diseases of the National  
24 Health Laboratory Service, Johannesburg, South Africa. School of Health Sciences, College of Health Sciences, University of  
25 KwaZulu-Natal, KwaZulu-Natal, South Africa.)
- 26 Amelia Buys, ND (Centre for Respiratory Diseases and Meningitis, National Institute for Communicable Diseases of the National Health  
27 Laboratory Service, Johannesburg, South Africa.)
- 28 Kedibone Ndlangisa, PhD (Centre for Respiratory Diseases and Meningitis, National Institute for Communicable Diseases of the National  
29 Health Laboratory Service, Johannesburg, South Africa.)
- 30 Nicole Wolter, PhD (Centre for Respiratory Diseases and Meningitis, National Institute for Communicable Diseases of the National Health  
31 Laboratory Service, Johannesburg, South Africa. School of Pathology, Faculty of Health Sciences, University of the  
32 Witwatersrand, Johannesburg, South Africa.)
- 33 Leisha Genade, MPH (Perinatal HIV Research Unit (PHRU), University of the Witwatersrand, Johannesburg, South Africa.)
- 34 Lucia Maloma, BA(Hons) (Perinatal HIV Research Unit (PHRU), University of the Witwatersrand, Johannesburg, South Africa.)

35 Juanita Chewparsad, MSc (Perinatal HIV Research Unit (PHRU), University of the Witwatersrand, Johannesburg, South Africa.)  
36 Limakatso Lebina, PhD (Perinatal HIV Research Unit (PHRU), University of the Witwatersrand, Johannesburg, South Africa. Africa Health  
37 Research Institute (AHRI), Durban, South Africa)  
38 Linda de Gouveia, ND (Centre for Respiratory Diseases and Meningitis, National Institute for Communicable Diseases of the National  
39 Health Laboratory Service, Johannesburg, South Africa.)  
40 Retshidisitswe Kotane, BCMP (Centre for Respiratory Diseases and Meningitis, National Institute for Communicable Diseases of the  
41 National Health Laboratory Service, Johannesburg, South Africa.)  
42 Stefano Tempia, PhD (Centre for Respiratory Diseases and Meningitis, National Institute for Communicable Diseases of the National Health  
43 Laboratory Service, Johannesburg, South Africa. School of Public Health, Faculty of Health Sciences, University of the  
44 Witwatersrand, Johannesburg, South Africa.)  
45 Prof Cheryl Cohen, PhD (Centre for Respiratory Diseases and Meningitis, National Institute for Communicable Diseases of the National  
46 Health Laboratory Service, Johannesburg, South Africa. School of Public Health, Faculty of Health Sciences, University of the  
47 Witwatersrand, Johannesburg, South Africa.)  
48 **Corresponding author:** Jackie Kleynhans. Address: Centre for Respiratory Diseases and Meningitis, National Institute for Communicable  
49 Diseases of the National Health Laboratory Service, Johannesburg, South Africa. School of Public Health, Faculty of Health Sciences,  
50 University of the Witwatersrand, Johannesburg, South Africa. Email: [jackiel@nicd.ac.za](mailto:jackiel@nicd.ac.za). Contact number: +27 11 555 0383 or +27 84 763  
51 5417.  
52 **Alternative Corresponding author:** Cheryl Cohen. Address: Centre for Respiratory Diseases and Meningitis, National Institute for  
53 Communicable Diseases of the National Health Laboratory Service, Johannesburg, South Africa. School of Public Health, Faculty of Health  
54 Sciences, University of the Witwatersrand, Johannesburg, South Africa. Email: [cherylc@nicd.ac.za](mailto:cherylc@nicd.ac.za). Contact number: +27 11 386 6593.  
55 **Keywords:** SARS-CoV-2, COVID-19, HIV, transmission, acquisition  
56 **Running title:** Household transmission of SARS-CoV-2  
57 **Summary:** In this case-ascertained, prospective household transmission study, household cumulative  
58 infection risk was 59% from symptomatic SARS-CoV-2 index cases, not differing based on index  
59 HIV status. Index cases living with HIV were positive for SARS-CoV-2 for longer at higher viral  
60 loads.

61 **Abstract (words 247/250)**

62 **Background**

63 In South Africa 19% of the adult population aged 15-49 years are living with HIV (LWH). Few data  
64 on the influence of HIV on SARS-CoV-2 household transmission are available.

65 **Methods**

66 We performed a case-ascertained, prospective household transmission study of symptomatic index  
67 SARS-CoV-2 cases LWH and HIV-uninfected adults and their contacts in South Africa. Households  
68 were followed up thrice weekly for 6 weeks to collect nasal swabs for SARS-CoV-2 testing. We  
69 estimated household cumulative infection risk (HCIR), duration of SARS-CoV-2 positivity (at cycle  
70 threshold value <30 as proxy for high viral load), and assessed associated factors.

71 **Results**

72 We recruited 131 index cases and 457 household contacts. HCIR was 59% (220/373); not differing by  
73 index HIV status (60% [50/83] in cases LWH vs 58% [173/293] in HIV-uninfected cases, OR 1.0,  
74 95%CI 0.4-2.3). HCIR increased with index case age (35-59 years: aOR 3.4 95%CI 1.5-7.8 and ≥60  
75 years: aOR 3.1, 95%CI 1.0-10.1) compared to 18-34 years, and contacts' age, 13-17 years (aOR 7.1,  
76 95%CI 1.5-33.9) and 18-34 years (aOR 4.4, 95%CI 1.0-18.4) compared to <5 years. Mean positivity  
77 duration at high viral load was 7 days (range 2-28), with longer positivity in cases LWH (aHR 0.3,  
78 95%CI 0.1-0.7).

79 **Conclusions**

80 HIV-infection was not associated with higher HCIR, but cases LWH had longer positivity duration at  
81 high viral load. Adults aged >35 years were more likely to transmit, and individuals aged 13-34 to  
82 acquire SARS-CoV-2 in the household. Health services must maintain HIV testing with initiation of  
83 antiretroviral therapy for those HIV-infected.

84

## 85 **Introduction**

86 At end of January 2022, South Africa had reported 3.6 million coronavirus disease 2019 (COVID-19)  
87 cases and 94.3 thousand deaths; the highest reported from Africa, likely due to the highest testing  
88 capacity.[1, 2] South Africa experienced four severe acute respiratory syndrome coronavirus 2  
89 (SARS-CoV-2) waves of infection: the first dominated by ancestral variants, followed by Beta  
90 (B.1.351), Delta (B.1.617.2) and Omicron (B.1.1.529) variant dominated waves, respectively.[3]

91 Although incident HIV infections and AIDS-related deaths from 2010 to 2019 in South Africa  
92 reduced by 53% and 61%, respectively, the burden of HIV in South Africa is still high, with an  
93 estimated 19% of the adult population aged 15-49 living with HIV (LWH); the fourth highest in Sub-  
94 Saharan Africa.[4] In 2019, South Africa had an estimated 186,000 new HIV infections and 68,000  
95 adult deaths were HIV/AIDS-related .[4] However, South Africa has managed to attain two of the  
96 three 90-90-90 goals: an estimated 92% of South Africans of all ages know their HIV status, 75% of  
97 whom are on antiretroviral treatment (ART), and 92% of individuals on treatment are virally  
98 suppressed.[3]

99 Few studies report the influence of HIV infection on SARS-CoV-2 transmission, duration of shedding  
100 and clinical severity, with most data available from high income countries and little evidence from  
101 sub-Saharan Africa where most people LWH reside.[4] Evidence from multiple studies suggests that  
102 people LWH are at greater risk for hospitalisation[5-8] and death[7-11] when infected with SARS-  
103 CoV-2, but that SARS-CoV-2 prevalence is similar between people LWH and HIV-uninfected  
104 individuals,[12] Risk for hospitalisation and death increases with a decline in CD4+ T cells.[6, 7, 11]  
105 Limited data are available on the role of HIV in the transmission of SARS-CoV-2. One study from a  
106 South African household cohort showed no increase in household transmission from or acquisition of  
107 SARS-CoV-2 infection in people LWH.[2] People LWH with severe COVID-19 who are not virally  
108 suppressed shed SARS-CoV-2 for longer periods,[2, 13] which could also lead to increased secondary  
109 transmission.

110 Case-ascertained household transmission studies can assist in better understanding risk factors to  
111 transmit and acquire SARS-CoV-2, the proportion of household contacts that become infected and

112 that develop symptoms, the duration of shedding and the serial interval, but few studies have been  
113 published thus far, especially from Africa. A recent meta-analysis including 126 studies, estimated a  
114 36% household secondary attack for studies done in 2021, and 16% for studies done in 2020.[14]

115 We aimed to assess household cumulative infection risk, duration of SARS-CoV-2 positivity (episode  
116 duration), serial interval and factors associated with these measures in households with SARS-CoV-2  
117 index cases LWH and HIV-uninfected.

## 118 **Methods**

119 We conducted a case-ascertained, prospective observational household transmission study of  
120 household contacts of symptomatic adult index SARS-CoV-2 cases LWH and HIV-uninfected at two  
121 sites in South Africa, Klerksdorp (North West Province) and Soweto (Gauteng Province). Sample size  
122 calculation is detailed in the supplementary methods. The total sample size was 264 and 176 contacts  
123 from households with an HIV-uninfected and HIV-infected index case, respectively. This was based  
124 on assuming 40% HIV prevalence among index cases, HCIR of 10% and 20% in household members  
125 exposed to an HIV-uninfected and HIV-infected index case, respectively, for a 95% confidence  
126 interval and 80% power.

### 127 *Screening for index cases*

128 Screening procedures are detailed in the supplementary methods. In short, nasopharyngeal swabs  
129 were collected from clinic attendees aged  $\geq 18$  years with symptom onset  $\leq 5$  days prior to screening  
130 and tested for SARS-CoV-2 RNA using real-time reverse transcription polymerase chain reaction  
131 (rRT-PCR).

### 132 *Household enrolment*

133 We approached households of individuals who tested positive for SARS-CoV-2, with symptom onset  
134 less than 7 days prior, with no household members reporting symptoms in the 14 days prior to index  
135 screening. Households with  $\geq 3$  eligible members, of whom  $\geq 70\%$  consented to participate were  
136 enrolled. We collected information on household characteristics, demographics, underlying medical

137 conditions, and vaccination information. Households that withdrew within 10 days from index  
138 symptom start date were excluded from the analysis.

#### 139 *Index and household follow-up*

140 We visited households three times a week for 6 weeks to collect a nasal swab, presence of symptoms  
141 and healthcare seeking behaviour from all consenting household members. At the first and last study  
142 visits, clotted blood was collected for serological testing. All data collected during screening and  
143 follow up visits were captured in real-time using tablets onto Research Electronic Data Capture  
144 (REDCap) databases hosted at the University of the Witwatersrand[15]. Follow-up continued to 11  
145 August 2021 and 28 September 2021 in Klerksdorp and Soweto respectively.

#### 146 *SARS-CoV-2 detection*

147 Nasopharyngeal (screening) and nasal (follow-up) specimens were tested for the E, RdRp and N  
148 SARS-CoV-2 genes by rRT-PCR, using the Allplex™ 2019-nCoV kit (Seegene Inc., Seoul, South  
149 Korea) according to manufacturer instructions. Specimens were considered positive for SARS-CoV-2  
150 if the cycle threshold ( $C_t$ ) value was below 40 for any of the gene targets.

#### 151 *SARS-CoV-2 variants*

152 We characterized the first SARS-CoV-2 positive specimen for each participant on the Allplex™  
153 SARS-CoV-2 Variants I and II PCR assays (Seegene Inc., Seoul, Korea) and through full genome  
154 sequencing on the Ion Torrent Genexus platform (Thermo Fisher Scientific, USA). We classified the  
155 infection episodes as an Alpha, Beta, Delta, non-Alpha/Beta/Delta or unknown variant as detailed in  
156 supplementary methods.

#### 157 *Serology*

158 We used an in-house ELISA to detect antibodies against SARS-CoV-2 spike protein[16] and  
159 nucleocapsid protein using the Roche Elecsys anti-SARS-CoV-2 assay. Individuals were considered  
160 seropositive if they tested positive on either one of the assays performed.

#### 161 *Statistical analysis*

162 Definitions used are defined in Table 1. To assess factors associated with HCIR and minimum Ct  
163 value  $\leq 25$  during secondary cases episode we used logistic regression accounting for within site and  
164 household clustering using a mixed effects hierarchical regression model. To assess factors associated  
165 with a time to event analysis (serial interval and episode duration in index cases), we used a multilevel  
166 mixed-effects survival model with Weibull accelerated failure time analysis, controlling for site and  
167 household clustering in serial interval analysis, and site clustering in the episode duration analysis.  
168 Episode duration was assessed at any Ct value ( $<40$ ), and as rRT-PCR positivity with a Ct value for  
169 any target with a Ct $<30$  (proxy for high viral load). We first assessed co-variables on univariate  
170 analysis, including all with  $p<0.2$  in the multivariable analysis. We performed backwards elimination  
171 and kept all variables with  $p<0.05$  in the final model, except for those included a priori. We included  
172 site, SARS-CoV-2 variant and index immune suppression related to HIV status (defined as CD4+ T  
173 cell count  $<200$  cells/ml) in the HCIR and episode duration models; and site in the serial interval  
174 analysis. Variant type and immune suppression status was not included a priori in the serial interval  
175 analysis due to small numbers, and no predictors were included a prior in the minimum Ct value  
176 analysis.

### 177 *Sensitivity analysis*

178 To assess the influence of loss to follow-up on the results, we performed a sensitivity analysis  
179 including only households where 65% of household members completed 65% of follow-up visits in  
180 the first three weeks of follow-up. As a second sensitivity analysis, to explore the effect of likely  
181 previous SARS-CoV-2 infection, we also considered all household members irrespective of baseline  
182 serology as susceptible contacts in the HCIR analysis.

### 183 *Ethics*

184 The study protocol was approved by the University of Witwatersrand Human Research Ethics  
185 Committee (Reference M2008114). Participants in household follow-up received grocery store  
186 vouchers of USD 3 per visit to compensate for time required for specimen collection and interview.

## 187 **Results**

### 188 *Screening, enrolment and follow-up*

189 From 2 October 2020 to 30 September 2021, we screened 1,531 clinic attendees for SARS-CoV-2, of  
190 whom 18% (277) tested positive on rRT-PCR. Of those testing positive for SARS-CoV-2 who met  
191 eligibility criteria for household enrolment (n=277), 143 (52%) households were approached and 131  
192 (92%) were enrolled and included in the analysis. The final cohort consisted of 131 index cases and  
193 457 household contacts (Figure 1).

194 Twenty-one percent (28/131) of index cases were LWH, and two index cases initially agreed but then  
195 refused HIV testing after enrolment. The majority (93/131, 71%) of index cases and contacts  
196 (265/457, 58%) were female. The mean household size was 5 individuals (range 3 – 10) and 67% of  
197 households reported >2 people sleeping in the same room (Table 2).

198 Of a potential 10,584 study visits, we completed 8,509 (80%) visits, and detected SARS-CoV-2 in  
199 17% (1,454/8,352) of nasal swabs collected (Supplementary Figure 1).

### 200 *Secondary SARS-CoV-2 cases*

201 We diagnosed 232 laboratory-confirmed secondary cases from the 457 contacts linked to the 131  
202 index cases. One third (69/232) of secondary cases reported at least one symptom during their SARS-  
203 CoV-2 episode, with contacts reporting between one to nine symptoms, and an average of three  
204 symptoms during the episode. The mean duration of symptoms in secondary cases was 11 days (range  
205 4-40 days). The three most common symptoms reported in contacts were cough (45/69, 65%),  
206 headache (31/67, 46%) and self-reported or measured fever  $\geq 38^{\circ}\text{C}$  (27/69, 39%).

### 207 *Household cumulative infection risk*

208 Of 131 households, we excluded eight (6%) households from the HCIR analysis: four (17 contacts)  
209 had SARS-CoV-2 clusters with more than one variant detected, and in three (8 contacts) all contacts  
210 were seropositive at baseline with no PCR-confirmed SARS-CoV-2 infection during follow-up. An  
211 additional 63 contacts were excluded from this analysis because they had prevalent SARS-CoV-2



212 antibodies at baseline, and no SARS-CoV-2 detection during follow-up. We therefore included  
213 124/131 (95%) index cases with 373/436 (86%) contacts for this analysis.

214 The HCIR was 59% (220/373) overall. The mean number of household contacts testing positive for  
215 SARS-CoV-2 following the index episode was 2 and ranged from 0 to 7. In the univariate analysis,  
216 the HCIR was similar in households with HIV-uninfected index cases (58%, 173/293), compared to  
217 households where the index was LWH (60%, 50/83, OR 1.0, 95%CI 0.4-2.3).

218 On multivariable analysis, after adjusting for site and immune suppression, factors significantly  
219 associated with household transmission were index case aged 35-59 years (aOR 3.4 95% CI 1.5-7.8)  
220 and  $\geq 60$  years (aOR 3.1, 95%CI 1.0-10.1) compared to 18-34 years; index cases with a Ct value  $< 25$   
221 at any point in the episode (aOR 5.6, 95%CI 1.6-17.6) and 25-35 (aOR 7.5, 95%CI 2.2-26.0)  
222 compared to Ct  $> 35$ ; infection with the Delta variant compared to Beta (aOR 4.6, 95%CI 1.5-14.4);  
223 index cases that were underweight (aOR 0.1, 95%CI 0.0-0.8) and obese (aOR 0.4 95% CI 0.2-0.9),  
224 compared to normal weight (Figure 4, Supplementary table 1). Among index cases LWH, individuals  
225 with immune suppression (CD4+ T cell count  $< 200$  cells/ml), had a higher HCIR (62%, 8/13)  
226 compared to index cases not immune suppressed (58%, 30/52), but this was not statistically  
227 significant on multivariable analysis (aOR 2.5, 95%CI 0.4-15.3). Contact age 13-17 years (aOR 7.1,  
228 95%CI 1.5-33.9) and 18-34 years (aOR 4.4, 95%CI 1.0-18.4) compared to  $< 5$  years and contacts not  
229 currently smoking (aOR 3.9, 95%CI 1.7-9.0) were associated with higher HCIR.

### 230 *Episode duration*

231 We right-censored 6% of the (8/131) index cases who were SARS-CoV-2 positive on their last  
232 specimen collected at the end of follow-up (n=5) or at withdrawal (n=3). When including all 131  
233 index cases, the mean episode duration for index cases was 20 days and ranged from 3 to 47 days.  
234 When excluding the eight right-censored individuals (n=123), the mean episode duration for index  
235 cases was 19 days and ranged from 3 to 45 days. The mean episode duration was similar for HIV-  
236 uninfected index cases (20 days, range 3-45) compared to index cases LWH (17 days, range 3-45, HR  
237 0.8, 95%CI 0.5-1.2).

238 On multivariable analysis, factors associated with a longer episode duration was Soweto site (aHR  
239 0.5, 95%CI 0.3-0.7), being 35-59 years old (aHR 0.4, 95%CI 0.2-0.6) and  $\geq 60$  years (aHR 0.2, 95%CI  
240 0.1-0.5) compared to 18-34 years, Ct values  $< 25$  (aHR 0.3, 95%CI 0.2-0.6) compared to  $> 35$  (Table  
241 3) and being seropositive at the end of follow-up (aHR 0.1, 95%CI 0.0-0.3) compared to seronegative.  
242 Individuals infected with the Delta variant (aHR 2.4, 95%CI 1.1-5.0) and a non-variant of concern  
243 (aHR 2.5, 95%CI 1.3-4.7), compared to Beta, and those who were underweight (aHR 5.3, 95%CI 1.4-  
244 20.0) or obese (aHR 1.9, 95%CI 1.1-3.1) compared to a normal BMI, had shorter episode durations  
245 (Figure 5, Supplementary table 2).

246 Eighty-eight (67%) of index cases had at least one specimen with at least one target with a Ct $< 30$ . The  
247 mean episode duration with Ct $< 30$  was 7 days (range 2-17). On multivariable analysis, factors  
248 associated with a longer episode duration considering only specimens with at least one target with a  
249 Ct $< 30$  was female sex (aHR 0.5, 95%CI 0.3-0.9), LWH (aHR 0.4, 95%CI 0.1-0.9) and being  
250 seropositive at the end of follow-up (aHR 0.01, 95%CI 0.001-0.2) compared to seronegative (Figure  
251 5, Supplementary table 3).

#### 252 *Serial interval*

253 We excluded 5 index contact pairs from the analysis where the serial interval was  $> 21$  days; three  
254 with an HIV-uninfected contact and two pairs where the index was LWH. The mean serial interval for  
255 index cases and symptomatic contact pairs was 6 days and ranged from 1 to 20 days. The mean serial  
256 interval for HIV-uninfected index cases was 6 days (range 1-15) and for index cases LWH was 8 days  
257 (range 2-20).

258 On multivariable analysis, pairs with contacts aged 35-59 years (aHR 0.3, 95%CI 0.1-0.9) and aged  
259  $\geq 60$  years (aHR 0.2, 95%CI 0.0-0.8), compared to being aged 18-34 years, and where the contact was  
260 LWH (aHR 0.1, 95%CI 0.0-0.8) compared to being HIV-uninfected had longer serial intervals (Figure  
261 6, Supplementary table 4).

#### 262 *Factors associated with low minimum Ct value in secondary cases*

263 Of the 232 laboratory-confirmed secondary cases diagnosed, 46% had at least one SARS-CoV-2  
264 positive sample with a Ct value for any target  $\leq 25$  (proxy for higher viral load). On multivariable  
265 analysis, contacts with underlying illness (aOR 3.7, 95%CI 1.1-12.9), that reported any symptoms  
266 (aOR 3.2, 95%CI 1.2-8.8), that were seronegative at the start of follow-up (aOR 9.4, 95%CI 3.7-23.5),  
267 seropositive at the end of follow-up (aOR 18.2, 95%CI 3.4-95.9), and infected with the Delta variant  
268 (aOR 4.6, 95%CI 1.2-17.9) compared to Beta, were more likely to have had at least one SARS-CoV-2  
269 positive sample with a Ct value for any target  $\leq 25$  (Supplementary table 5).

#### 270 *Out-patient consultations, hospitalisations and deaths*

271 The COVID-19-related hospitalisation rate was 6% (6/131) in index cases and 1% (5/457) in contacts  
272 (Supplementary Table 6), with one death each of an index case and contact. In addition to the contacts  
273 admitted, only 2 other contacts reported outpatient consultation visits related to the SARS-CoV-2  
274 episode.

#### 275 *Sensitivity analysis*

276 In a sensitivity analysis in which we did not exclude individuals that were seropositive at baseline  
277 with no PCR confirmed SARS-CoV-2 infection during follow-up, the HCIR was 51% (220/436)  
278 overall, 46% (95/205) and 54% (125/231) in Klerksdorp and Soweto respectively. We still found  
279 similar factors associated with HCIR (Supplementary Table 2), with HCIR in households with an  
280 index LWH being the same as in households where the index was HIV-uninfected (49%).  
281 Furthermore, when only including households where 65% of members completed 65% of visits of  
282 their first three weeks of follow-up, we included 112 index cases with 342 contacts. Factors associated  
283 with HCIR, episode duration and serial interval were similar to what we observed in the main analysis  
284 (Supplementary Tables 7-9)

## 285 **Discussion**

286 We performed a case-ascertained, prospective observational household transmission study for SARS-  
287 CoV-2 in South Africa, including 131 index cases, 28 of whom were LWH; and 457 household  
288 contacts. The HCIR was similar in index cases LWH and HIV-uninfected index cases. Episode

289 duration at high viral load was longer in index cases LWH and serial interval was longer in contacts  
290 LWH. We observed a 59% HCIR, with HCIR being higher in households with older index cases and  
291 contacts aged 13-17 years and 18-34 years. HCIR was also higher in households with Delta-infected  
292 index cases compared to Beta. Index episode durations were longer in older aged individuals, and in  
293 those with a Delta infection compared to Beta. The serial interval was longer if the contact was older  
294 and LWH.

295 HCIR from previous studies have varied greatly based on study design, symptom status of the index  
296 timing within the epidemic[17] and SARS-CoV-2 variant.[14] In our study only including  
297 symptomatic index cases, we estimated the HCIR at 59%, a higher estimate than the 36% reported  
298 from a recent meta-analysis.[14] In a Madagascar study also including both symptomatic and non-  
299 symptomatic index cases, HCIR was estimated at 39%.[18] The higher estimate seen in our current  
300 study may be influenced by symptom severity, as proposed in previous studies,[19] or the inclusion of  
301 only adult index cases, since adult index cases have been shown to result in higher HCIR.[20] In our  
302 study, households with index cases older than 35 years were three times more likely to result in higher  
303 HCIR compared to when index cases were aged 18-34 years. HCIR was also higher when contacts  
304 were aged 13-17 and 18-34, compared to younger than 5 years. Contacts aged 13-18 years were also  
305 associated with higher HCIR in the South African PHIRST-C study,[2] although studies from earlier  
306 in the pandemic showed higher attack rates in elderly household members.[19, 21] This may be  
307 related to the shift in age-distribution of cases from the older population to younger individuals with  
308 progression of the pandemic.[2, 22, 23] As seen previously,[2, 24, 25] we also observed higher  
309 secondary attack rates where the minimum rRT-PCR cycle threshold was lower for the index case,  
310 which could be considered a proxy for higher viral load.

311 We observed no difference in HCIR in households with index cases living with and without HIV.  
312 However, we observed a signal for higher HCIR in PLWH who were immune suppressed, but this  
313 association was not statistically significant possibly due to low numbers (n=14) of included  
314 immunosuppressed index cases LWH. This would fit with previous studies finding that

315 immunocompromised PLWH that shed virus for longer[2, 13] allowing longer opportunity for  
316 secondary infections.

317 The mean episode duration of 19 days, was higher than the 11 days reported from the household  
318 cohort study from South Africa[2] but more similar to the 18 days estimate from a meta-analysis for  
319 viral shedding time.[26] This may be due to our analysis being limited to symptomatic individuals,  
320 which was shown to be associated with longer episode duration.[2, 26] Furthermore, our episode  
321 duration estimates could also have been biased to shorter durations due to the right-censoring of  
322 individuals still positive for SARS-CoV-2 by the end of follow up. However, episode duration in this  
323 study is also higher than studies on hospitalised South African patients where the median episode  
324 duration was 13 days[13] and 11 days. Previous studies from South Africa in the community and in  
325 hospitals found that immunocompromised people LWH shed SARS-CoV-2 for longer.[2, 13] While  
326 we did not find overall longer shedding in people LWH, when considering detection at a Ct<30  
327 (proxy for high viral load), we also observed people LWH had longer episode durations.

328 Obesity has been shown to be associated with increased episode duration,[13] of which we observed  
329 the inverse with individuals of normal weight having longer episode durations, the reason for this is  
330 unclear. After adjusting for confounders on multivariable analysis, individuals infected with the Delta  
331 variant had shorter episode durations than those infected with Beta, while episode duration did not  
332 differ based on variant when considering detection at a Ct<30. In contrast, households with Delta  
333 infections had higher HCIR. Longer episode duration does not necessary indicate shedding of live  
334 virus; and higher HCIR with Delta might be related to higher viral loads[27] and increased  
335 infectiousness.[28] We did observe lower minimum Ct values (proxy for higher viral load) in  
336 secondary cases infected with Delta compared to Beta. The shorter episode durations with Delta  
337 infections in index cases observed could also be due to repeat infections in some index cases, which  
338 have been shown to result in shorter episode durations.[27] Episode duration based on Ct<30 (as a  
339 proxy for higher viral load) was longer in females. This association of longer episode duration in  
340 females has not been observed in other studies, and warrants further investigation.

341 Very limited data are available on SARS-CoV-2 serial interval, especially so for people LWH.  
342 Previous estimates have ranged between 4 to 7.5 days[2, 19] which is similar to our estimate of 6  
343 days. We did not find any index characteristics related to longer serial intervals, but longer serial  
344 intervals were observed in contacts older than 35 years, and those LWH. Individuals with  
345 compromised immune systems (PLWH, elderly) may still be able to be infected with SARS-CoV-2  
346 towards the end of the index episode when viral loads are lower.

347 From our results, there were fewer secondary cases in contacts who smoked. While evidence exists  
348 that smoking may lead to poorer COVID-19 outcomes,[29] other studies have also found a negative  
349 association with smoking and SARS-CoV-2 infection.[29, 30] The latter association may be a result  
350 of confounding biases including socio-economic status and healthcare seeking behaviour,[29] or  
351 possible decreased test sensitivity[30] or could reflect a true biological interaction.

352 Our study had limitations. We assumed the first household member presenting with symptoms was  
353 the index case. If the true index cases were asymptomatic, we would have underestimated the serial  
354 interval, although HCIR estimates should not be greatly affected. By excluding individuals  
355 seropositive at baseline with no SARS-CoV-2 infection during follow-up, we assumed a 100%  
356 protection from previous infections, which is likely not correct, and in turn may have overestimated  
357 the HCIR. When including these individuals, the HCIR reduced by 8%. We were unable to reach the  
358 planned sample size for contacts of index cases LWH, and may have been underpowered to detect  
359 some differences, especially when stratifying by immunocompromised status.

360 In conclusion, in two communities in South African households, HCIR was higher than in previous  
361 studies[14] but was not influenced by HIV status. Episode duration at high viral loads and serial  
362 interval was increased for people LWH. Although HIV may not be the primary driver in SARS-CoV-  
363 2 transmission, it may still play a role, especially if PLWH are not virally suppressed. The SARS-  
364 CoV-2 pandemic impacted several health programs, including HIV testing and care. During initial  
365 lockdowns there was a decline in HIV testing and antiretroviral therapy (ART) initiations, which  
366 gradually returned to pre-lockdown levels after the lockdown in South Africa[31] and other Sub-

367 Saharan African countries.[32] Sustaining and strengthening HIV treatment and care programs should  
368 be a focus moving forward.

369

### 370 **Funding**

371 This research was funded by the Wellcome Trust (Grant number 221003/Z/20/Z) in collaboration with  
372 the Foreign, Commonwealth and Development Office, United Kingdom. For the purpose of open  
373 access, the author has applied a CC BY-ND public copyright licence to any Author Accepted  
374 Manuscript version arising from this submission.

### 375 **Acknowledgements**

376 All individuals participating in the study, field teams for their hard work and dedication to the study,  
377 the CRDM laboratory team, Andrew Whitelaw, June Fabian, Themba Radebe and Thoko Sifunda  
378 from the safety committee.

379 This study protocol was adapted from the World Health Organization Unity Studies Early  
380 Investigation Protocol for Household transmission investigation protocol for COVID-19 infection.

### 381 **Potential conflicts of interest**

382 CC has received grant support from Sanofi Pasteur, US CDC, Wellcome Trust, Programme for  
383 Applied Technologies in Health (PATH), Bill & Melinda Gates Foundation and South African  
384 Medical Research Council (SA-MRC). Nicole Wolter and Anne von Gottberg report receiving grant  
385 funds from Sanofi and Gates Foundation. All other authors have no competing/conflict of interest.

### 386 **Author contributions**

387 Conception and design of study: JK, SW, NAM, AvG, JNB, MW, LL, ST, CC

388 Data collection and laboratory processing: AvG, JNB, DGA, AB, KN, NW, LG, LN, JC, LdG, RK

389 Analysis and interpretation: JK, SW, ST, CC

390 Accessed and verified underlying data: JK, MN, LG, LM, JC

391 Drafted the Article: JK

392 All authors critically reviewed the Article. All authors had access to all the data reported in the study.

393 **Data availability**

394 The investigators welcome enquiries about possible collaborations and requests for access to the  
395 dataset. Data will be shared after approval of a proposal and with a signed data access agreement.

396 Investigators interested in more details about this study, or in accessing these resources, should  
397 contact the corresponding author.



398 **References**

- 399 1. Africa CDC. Africa CDC COVID-19 Dashboard. Available at: [https://africacdc.org/covid-](https://africacdc.org/covid-19/)  
400 [19/](https://africacdc.org/covid-19/). Accessed 25 January.
- 401 2. Cohen C, Kleyhans J, von Gottberg A, et al. SARS-CoV-2 incidence, transmission, and  
402 reinfection in a rural and an urban setting: results of the PHIRST-C cohort study, South  
403 Africa, 2020-21. *The Lancet Infectious Diseases* **2022**.
- 404 3. Wolter N, Jassat W, Walaza S, et al. Early assessment of the clinical severity of the SARS-  
405 CoV-2 omicron variant in South Africa: a data linkage study. *The Lancet* **2022**; 339(10323):  
406 437-46.
- 407 4. UNAIDS. UNAIDS Data 2020, **2020**.
- 408 5. Spinelli MA, Lynch KL, Yun C, et al. SARS-CoV-2 seroprevalence, and IgG concentration  
409 and pseudovirus neutralising antibody titres after infection, compared by HIV status: a  
410 matched case-control observational study. *Lancet HIV* **2021**: S2352-3018(21)00072-2.
- 411 6. Ambrosioni J, Blanco JL, Reyes-Urueña JM, et al. Overview of SARS-CoV-2 infection in  
412 adults living with HIV. *Lancet HIV* **2021**; 8(5): e294-e305.
- 413 7. Tesoriero JM, Swain C-AE, Pierce JL, et al. COVID-19 Outcomes Among Persons Living  
414 With or Without Diagnosed HIV Infection in New York State. *JAMA Network Open* **2021**;  
415 4(2): e2037069-e.
- 416 8. Danwang C, Noubiap JJ, Robert A, Yombi JC. Outcomes of patients with HIV and COVID-  
417 19 co-infection: a systematic review and meta-analysis. *AIDS Res Ther* **2022**; 19(1): 3.
- 418 9. Ssentongo P, Heilbrunn ES, Ssentongo AE, et al. Epidemiology and outcomes of COVID-19  
419 in HIV-infected individuals: a systematic review and meta-analysis. *Sci Rep* **2021**; 11(1):  
420 6283-.
- 421 10. Dong Y, Li Z, Ding S, et al. HIV infection and risk of COVID-19 mortality: A meta-analysis.  
422 *Medicine* **2021**; 100(26): e26573.

- 423 11. Jassat W, Cohen C, Tempia S, et al. Risk factors for COVID-19-related in-hospital mortality  
424 in a high HIV and tuberculosis prevalence setting in South Africa: a cohort study. *The Lancet*  
425 *HIV* **2021**; 8(9): e554-e67.
- 426 12. Friedman EE, Devlin SA, McNulty MC, Ridgway JP. SARS-CoV-2 percent positivity and  
427 risk factors among people with HIV at an urban academic medical center. *PLoS One* **2021**;  
428 16(7): e0254994.
- 429 13. Meiring S, Tempia S, Bhiman JN, et al. Prolonged shedding of SARS-CoV-2 at high viral  
430 loads amongst hospitalised immunocompromised persons living with HIV, South Africa. *Clin*  
431 *Infect Dis* **2022**.
- 432 14. Madewell ZJ, Yang Y, Longini IM, Halloran ME, Dean NE. Household secondary attack  
433 rates of SARS-CoV-2 by variant and vaccination status: an updated systematic review and  
434 meta-analysis. *medRxiv* **2022**: 2022.01.09.22268984.
- 435 15. Harris PA, Taylor R, Minor BL, et al. The REDCap consortium: Building an international  
436 community of software platform partners. *J Biomed Inform* **2019**; 95: 103208-18.
- 437 16. Wibmer CK, Ayres F, Hermanus T, et al. SARS-CoV-2 501Y.V2 escapes neutralization by  
438 South African COVID-19 donor plasma. *Nat Med* **2021**; 27(4): 622-5.
- 439 17. Hsu C-Y, Wang J-T, Huang K-C, Fan AC-H, Yeh Y-P, Chen SL-S. Household transmission  
440 but without the community-acquired outbreak of COVID-19 in Taiwan. *J Formos Med Assoc*  
441 **2021**; 120: S38-S45.
- 442 18. Ratovoson R, Razafimahatratra R, Randriamanantsoa L, et al. Household transmission of  
443 COVID-19 among the earliest cases in Antananarivo, Madagascar. *Influenza Other Respir*  
444 *Viruses* **2022**; 16(1): 48-55.
- 445 19. Li Q, Guan X, Wu P, et al. Early Transmission Dynamics in Wuhan, China, of Novel  
446 Coronavirus-Infected Pneumonia. *The New England journal of medicine* **2020**:  
447 10.1056/NEJMoa2001316.
- 448 20. Koh WC, Naing L, Chaw L, et al. What do we know about SARS-CoV-2 transmission? A  
449 systematic review and meta-analysis of the secondary attack rate and associated risk factors.  
450 *PLoS One* **2020**; 15(10): e0240205.

- 451 21. Jing Q-L, Liu M-J, Zhang Z-B, et al. Household secondary attack rate of COVID-19 and  
452 associated determinants in Guangzhou, China: a retrospective cohort study. *The Lancet*  
453 *Infectious Diseases* **2020**; 20(10): 1141-50.
- 454 22. Malmgren J, Guo B, Kaplan HG. Continued proportional age shift of confirmed positive  
455 COVID-19 incidence over time to children and young adults: Washington State March—  
456 August 2020. *PLoS One* **2021**; 16(3): e0243042.
- 457 23. Kleynhans J, Tempia S, Wolter N, et al. SARS-CoV-2 Seroprevalence in a Rural and Urban  
458 Household Cohort during First and Second Waves of Infections, South Africa, July 2020–  
459 March 2021. *Emerging Infectious Disease journal* **2021**; 27(12): 3020.
- 460 24. Marks M, Millat-Martinez P, Ouchi D, et al. Transmission of COVID-19 in 282 clusters in  
461 Catalonia, Spain: a cohort study. *The Lancet Infectious Diseases* **2021**; 21(5): 629-36.
- 462 25. Cerami C, Popkin-Hall ZR, Rapp T, et al. Household transmission of SARS-CoV-2 in the  
463 United States: living density, viral load, and disproportionate impact on communities of color.  
464 *Clin Infect Dis* **2021**.
- 465 26. Yan D, Zhang X, Chen C, et al. Characteristics of Viral Shedding Time in SARS-CoV-2  
466 Infections: A Systematic Review and Meta-Analysis. *Frontiers in Public Health* **2021**; 9(209).
- 467 27. Sun K, Tempia S, Kleynhans J, et al. Persistence of SARS-CoV-2 immunity, Omicron’s  
468 footprints, and projections of epidemic resurgences in South African population cohorts.  
469 *medRxiv* **2022**: 2022.02.11.22270854.
- 470 28. Ong SWX, Chiew CJ, Ang LW, et al. Clinical and Virological Features of Severe Acute  
471 Respiratory Syndrome Coronavirus 2 (SARS-CoV-2) Variants of Concern: A Retrospective  
472 Cohort Study Comparing B.1.1.7 (Alpha), B.1.351 (Beta), and B.1.617.2 (Delta). *Clin Infect*  
473 *Dis* **2021**.
- 474 29. Shastri MD, Shukla SD, Chong WC, et al. Smoking and COVID-19: What we know so far.  
475 *Respir Med* **2021**; 176: 106237-.
- 476 30. Vallarta-Robledo JR, Sandoval JL, Baggio S, et al. Negative Association Between Smoking  
477 and Positive SARS-CoV-2 Testing: Results From a Swiss Outpatient Sample Population.  
478 *Frontiers in Public Health* **2021**; 9.

- 479 31. Dorward J, Khubone T, Gate K, et al. The impact of the COVID-19 lockdown on HIV care in  
480 65 South African primary care clinics: an interrupted time series analysis. *The Lancet HIV*  
481 **2021**; 8(3): e158-e65.
- 482 32. Harris TG, Jaszi E, Lamb MR, et al. Effects of the COVID-19 Pandemic on HIV Services:  
483 Findings from 11 Sub-Saharan African Countries. *Clin Infect Dis* **2021**.
- 484

485 **Tables**

486 **Table 1.** Definitions

---

Household	A group of three or more people who regularly share at least two meals in the same residence at least two days per week (residential institutions excluded).
Index case	The first household member who had COVID-like-symptoms. We assumed that the household member screened was the index case within the household as they were the first household member to develop symptoms
SARS-CoV-2 infection episode	At least one nasal swab rRT-PCR positive for SARS-CoV-2.
SARS-CoV-2 cluster	Composed of all infections within a household within an interval between infections of $\leq 2$ weeks including single infections within a household.
Episode duration	Duration of SARS-CoV-2 positivity. The start of symptom onset to the midpoint between the last positive swab and first negative. Individuals who were still SARS-CoV-2 positive on the last study visit (whether at end of follow-up or due to early withdrawal) were right-censored for the multivariable analysis.
Serial interval	Number of days between the onset of symptoms in the index case, to the onset of symptoms in the secondary case. The serial interval was the. Multivariable analyses were restricted to symptomatic secondary cases, and restricted to serial interval periods of $\leq 21$ days as longer serial intervals could have been due to tertiary cases or secondary infections.
Household cumulative infection risk (HCIR)	The percentage of susceptible household members (based on baseline serology) that had at least one SARS-CoV-2 positive swab from the start of follow-up, up to two weeks from the last SARS-CoV-2 positive swab of the index case.  Considering susceptibility was important because following the second wave of SARS-CoV-2 infection in South Africa, 41% of individuals were estimated to have had previous SARS-CoV-2 infection. <sup>[23]</sup> Individuals with SARS-CoV-2 antibodies detected at baseline, but also tested positive on rRT-PCR, were included in the HCIR calculation. Individuals for whom no baseline serology was available were included in the analysis as presumed susceptible. We did not consider any

---

secondary introductions in the household for our analysis. Households where members had SARS-CoV-2 infection with different variants of concern were excluded from the analysis.

---

487

488 **Table 2.** Baseline characteristics of SARS-CoV-2 index cases (n=131) and their household contacts (n=457), Klerksdorp and Soweto, South Africa,  
 489 September 2020 – October 2021.

Characteristic	Overall		Index Case, n/N (%)		Household contact, n/N (%)	
	Index Case, n/N (%)	Household contact, n/N (%)	Klerksdorp	Soweto	Klerksdorp	Soweto
<b>Household Characteristics</b>						
<b>Index case/contact</b>	131/588 (22)	457/588 (78)	62/274 (23)	69/314 (22)	212/274 (77)	245/314 (78)
<b>Household size</b>						
3-5	106/131 (81)	305/457 (67)	51/62 (82)	55/69 (80)	146/212 (69)	159/245 (65)
6-10	25/131 (19)	152/457 (33)	11/62 (18)	14/69 (20)	66/212 (31)	86/245 (35)
<b>Rooms used for sleeping</b>						
1-2	66/117 (56)	209/401 (52)	33/57 (58)	33/60 (55)	114/192 (59)	95/209 (45)
3-4	42/117 (36)	141/401 (35)	22/57 (39)	20/60 (33)	69/192 (36)	72/209 (34)
>4	9/117 (8)	51/401 (13)	2/57 (4)	7/60 (12)	9/192 (5)	42/209 (20)
<b>Crowding</b>	89/131 (68)	330/457 (72)	43/62 (69)	46/69 (67)	158/212 (75)	172/245 (70)
<b>Child &lt;5 years</b>	17/131 (13)	63/457 (14)	10/62 (16)	7/69 (10)	43/212 (20)	20/245 (8)
<b>HH member smokes inside</b>	30/131 (23)	93/457 (20)	18/62 (29)	12/69 (17)	51/212 (24)	42/245 (17)
<b>Main water source inside home</b>	92/131 (70)	321/457 (70)	38/62 (61)	54/69 (78)	124/212 (58)	197/245 (80)
<b>Place to wash hands inside</b>	129/131 (98)	451/457 (99)	62/62 (100)	67/69 (97)	212/212 (100)	239/245 (98)

Characteristic	Overall		Index Case, n/N (%)		Household contact, n/N (%)	
	Index Case, n/N (%)	Household contact, n/N (%)	Klerksdorp	Soweto	Klerksdorp	Soweto
<b>Main cooking fuel</b>						
Electricity	127/131 (97)	444/457 (97)	58/62 (94)	69/69 (100)	199/212 (94)	245/245 (100)
Gas/Paraffin	4/131 (3)	13/457 (3)	4/62 (6)	0/69 (0)	13/212 (6)	0/245 (0)
<b>Monthly household income</b>						
<R400	5/131 (4)	17/457 (4)	4/62 (6)	1/69 (1)	15/212 (7)	2/245 (1)
R401 to R800	6/131 (5)	19/457 (4)	4/62 (6)	2/69 (3)	12/212 (6)	7/245 (3)
R801 to R1 600	12/131 (9)	39/457 (9)	10/62 (16)	2/69 (3)	33/212 (16)	6/245 (2)
R1 601 to R3 200	23/131 (18)	86/457 (19)	12/62 (19)	11/69 (16)	43/212 (20)	43/245 (18)
R3 201 to R6 400	21/131 (16)	68/457 (15)	7/62 (11)	14/69 (20)	23/212 (11)	45/245 (18)
R6 401 to R12 800	8/131 (6)	33/457 (7)	2/62 (3)	6/69 (9)	5/212 (2)	28/245 (11)
R12 801 to R25 600	6/131 (5)	19/457 (4)	0/62 (0)	6/69 (9)	0/212 (0)	19/245 (8)
Refused to disclose	50/131 (38)	176/457 (39)	23/62 (37)	27/69 (39)	81/212 (38)	95/245 (39)
<b>Individual characteristics</b>						
<b>Age</b>						
<5		19/457 (4)			11/212 (5)	8/245 (3)
5-12		80/457 (18)			39/212 (18)	41/245 (17)



Characteristic	Overall		Index Case, n/N (%)		Household contact, n/N (%)	
	Index Case, n/N (%)	Household contact, n/N (%)	Klerksdorp	Soweto	Klerksdorp	Soweto
13-17		70/457 (15)			38/212 (18)	32/245 (13)
18-34	37/131 (28)	126/457 (28)	21/62 (34)	16/69 (23)	54/212 (25)	72/245 (29)
35-59	76/131 (58)	113/457 (25)	37/62 (60)	39/69 (57)	50/212 (24)	63/245 (26)
≥60	18/131 (14)	49/457 (11)	4/62 (6)	14/69 (20)	20/212 (9)	29/245 (12)
<b>Sex</b>						
Male	38/131 (29)	192/457 (42)	17/62 (27)	21/69 (30)	93/212 (44)	99/245 (40)
Female	93/131 (71)	265/457 (58)	45/62 (73)	48/69 (70)	119/212 (56)	146/245 (60)
<b>Level of education*</b>						
No schooling	6/129 (5)	15/283 (5)	3/60 (5)	3/69 (4)	1/120 (1)	14/163 (9)
Primary	4/129 (3)	21/283 (7)	2/60 (3)	2/69 (3)	14/120 (12)	7/163 (4)
Secondary	43/129 (33)	89/283 (31)	25/60 (42)	18/69 (26)	47/120 (39)	42/163 (26)
Matriculation	69/129 (53)	136/283 (48)	28/60 (47)	41/69 (59)	51/120 (43)	85/163 (52)
Post-secondary	7/129 (5)	22/283 (8)	2/60 (3)	5/69 (7)	7/120 (6)	15/163 (9)
<b>Employment*</b>						
Unemployed	55/121 (45)	159/258 (62)	25/57 (44)	30/64 (47)	68/111 (61)	91/147 (62)
Student	10/121 (8)	30/258 (12)	5/57 (9)	5/64 (8)	11/111 (10)	19/147 (13)

Characteristic	Overall		Index Case, n/N (%)		Household contact, n/N (%)	
	Index Case, n/N (%)	Household contact, n/N (%)	Klerksdorp	Soweto	Klerksdorp	Soweto
Employed	56/121 (46)	69/258 (27)	27/57 (47)	29/64 (45)	32/111 (29)	37/147 (25)
<b>Smoking cigarettes†</b>	17/129 (13)	66/323 (20)	11/60 (18)	6/69 (9)	35/145 (24)	31/178 (17)
<b>Smoke indoors</b>	5/17 (29)	15/66 (23)	5/11 (45)	0/6 (0)	14/35 (40)	1/31 (3)
<b>HIV status</b>						
HIV-uninfected	101/131 (77)	176/457 (39)	51/62 (82)	50/69 (72)	130/212 (61)	46/245 (19)
HIV-infected	28/131 (21)	35/457 (8)	10/62 (16)	18/69 (26)	16/212 (8)	19/245 (8)
HIV status unknown	2/131 (2)	246/457 (54)	1/62 (2)	1/69 (1)	66/212 (31)	180/245 (73)
<b>HIV infected index in household</b>						
Index HIV negative	101/131 (77)	344/457 (75)	51/62 (82)	50/69 (72)	175/212 (83)	169/245 (69)
Index HIV positive	28/131 (21)	103/457 (23)	10/62 (16)	18/69 (26)	34/212 (16)	69/245 (28)
Index HIV unknown	2/131 (2)	10/457 (2)	1/62 (2)	1/69 (1)	3/212 (1)	7/245 (3)
<b>CD4+ T cell count</b>						
HIV-infected, not immune suppressed‡	17/28 (61)	13/35 (37)	5/10 (50)	12/18 (67)	2/16 (13)	11/19 (58)
HIV-infected, immune suppressed‡	4/28 (14)	2/35 (6)	1/10 (10)	3/18 (17)	1/16 (6)	1/19 (5)
HIV-infected no CD4+ T cell count	7/28 (25)	20/35 (57)	4/10 (40)	3/18 (17)	13/16 (81)	7/19 (37)
<b>Underlying illness§</b>	32/129 (25)	57/448 (13)	12/60 (20)	20/69 (29)	205/212 (97)	243/245 (99)

Characteristic	Overall		Index Case, n/N (%)		Household contact, n/N (%)	
	Index Case, n/N (%)	Household contact, n/N (%)	Klerksdorp	Soweto	Klerksdorp	Soweto
<b>Body-mass index</b>						
Underweight	3/129 (2)	29/448 (6)	1/60 (2)	2/69 (3)	14/205 (7)	15/243 (6)
Normal	36/129 (28)	206/448 (46)	18/60 (30)	18/69 (26)	108/205 (53)	98/243 (40)
Overweight	25/129 (19)	103/448 (23)	10/60 (17)	15/69 (22)	39/205 (19)	64/243 (26)
Obese	65/129 (50)	110/448 (25)	31/60 (52)	34/69 (49)	44/205 (21)	66/243 (27)
<b>Previous TB</b>	7/129 (5)	9/448 (2)	2/60 (3)	5/69 (7)	6/205 (3)	3/243 (1)
<b>Current TB</b>	4/129 (3)	2/448 (0)	2/60 (3)	2/69 (3)	0/205 (0)	2/243 (1)
<b>COVID-19 vaccination¶</b>	0/131 (0)	1/457 (0)	62/62 (100)	69/69 (100)	1/212 (0)	0/245 (0)

490 \*Individuals  $\geq 18$  years old. †Individuals  $\geq 15$  years old. ‡Immune suppressed defined as CD4+ T cell count  $< 200$  cells/ml §Underlying medical conditions: Self-reported  
491 history of diabetes, hypertension, asthma, lung disease, heart disease, stroke, spinal cord injury, epilepsy, cancer, liver disease, renal disease, pre-maturity. ¶At least one dose  
492 administered 14 days prior to enrolment.

493 **Figures**

494 **Figure 1.** Adult SARS-CoV-2 index cases and household contacts enrolled, Klerksdorp and Soweto,  
495 South Africa, 2020-2021.

496 **Figure 2.** SARS-CoV-2 episode duration in HIV-infected and HIV-uninfected index cases,  
497 Klerksdorp and Soweto, South Africa, 2020-2021, (n=123). Excludes those positive at last specimen  
498 collected.

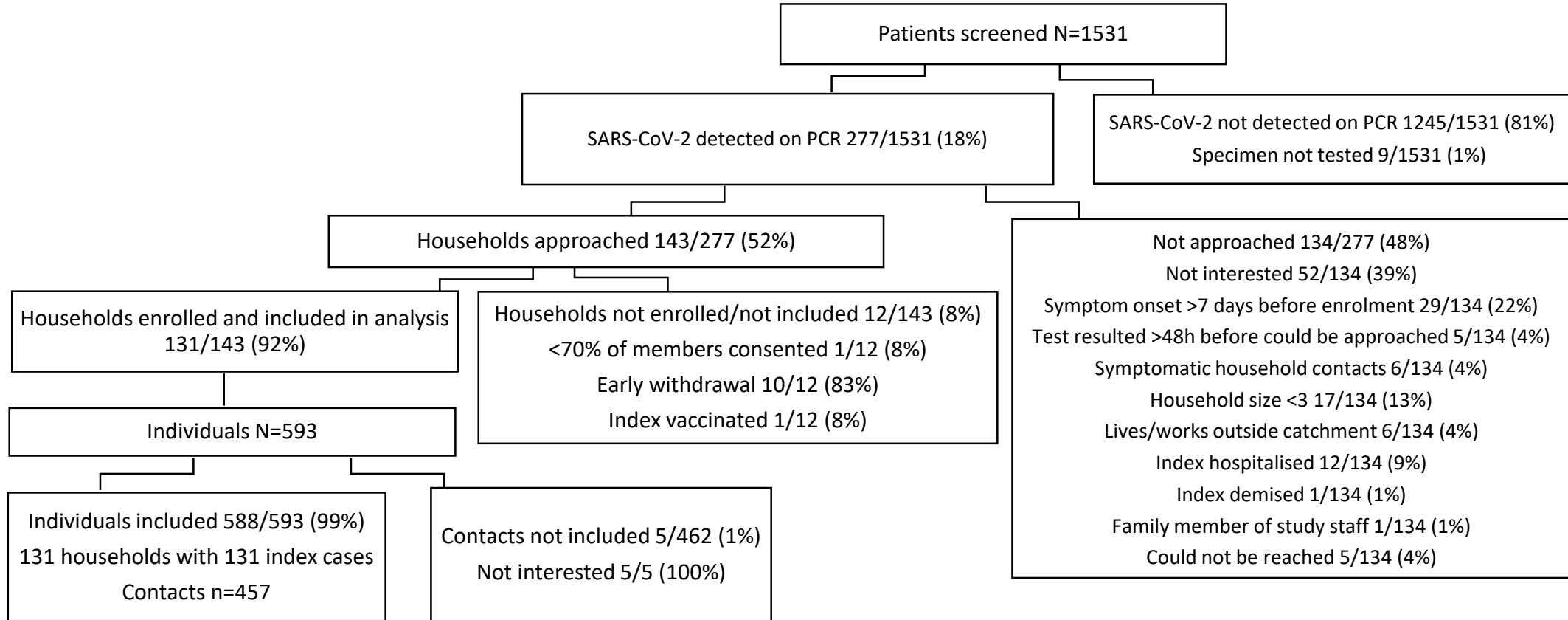
499 **Figure 3.** Interval between onset of symptoms in the index case and onset of symptoms in household  
500 contacts with SARS-CoV-2 (serial interval) by HIV-infection status of the index case, Klerksdorp and  
501 Soweto, South Africa, 2020-2021, (n=69). Arrow indicates cut-off for inclusion in analysis for factors  
502 associated with serial interval duration

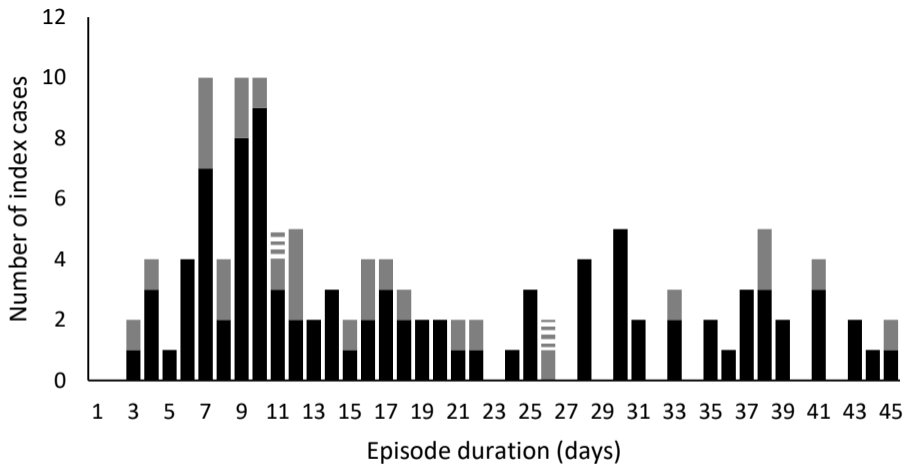
503 **Figure 4.** Factors associated with SARS-CoV-2 household transmission in index cases and  
504 acquisition in household contacts on multivariable logistic regression, Klerksdorp and Soweto, South  
505 Africa, 2020-2021, (n=373).

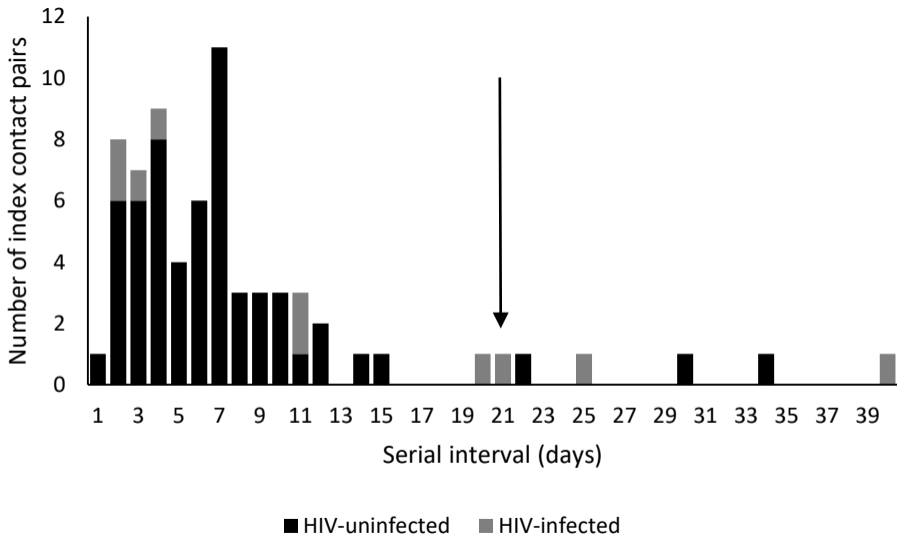
506 **Figure 5.** Factors associated with SARS-CoV-2 episode duration (irrespective of Ct value left, Ct<30  
507 right) in index cases on Weibull accelerated failure time regression, Klerksdorp and Soweto, South  
508 Africa, 2020-2021, (n=123).

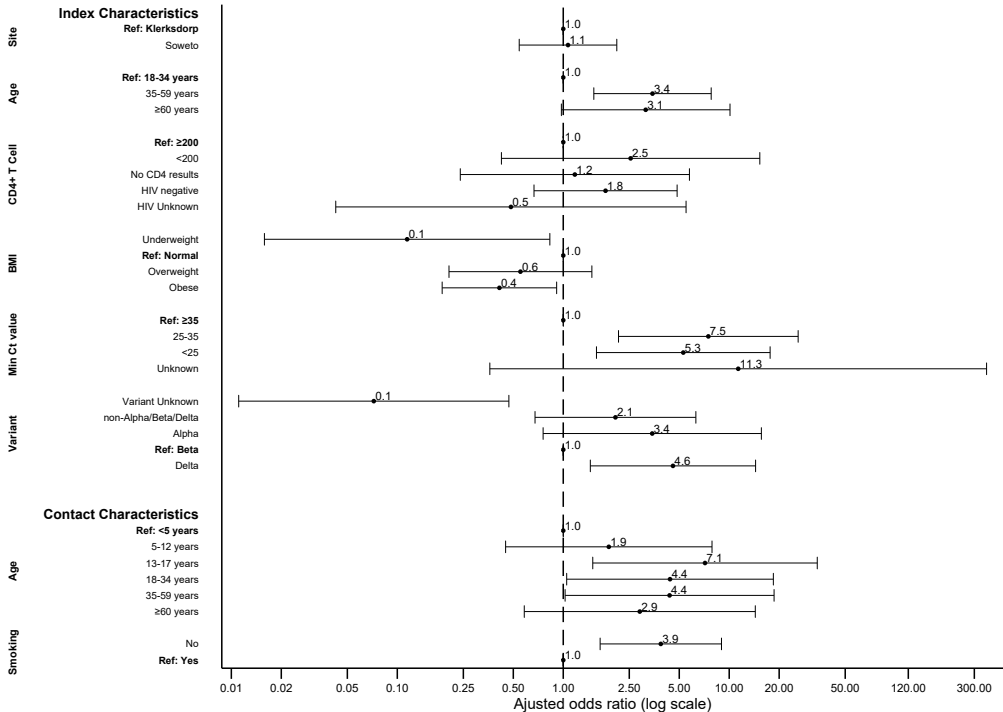
509 **Figure 6.** Factors associated with serial interval of SARS-CoV-2 in cases with symptomatic illness on  
510 Weibull accelerated failure time regression, Klerksdorp and Soweto, South Africa, 2020-2021,  
511 (n=62).

512





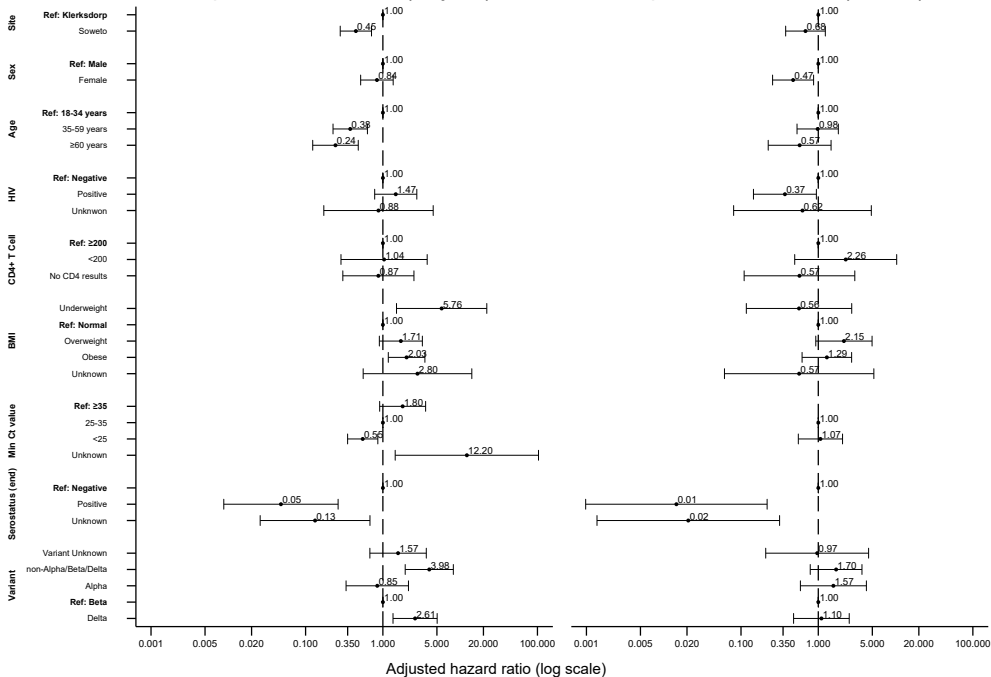






## Episode duration (any Ct)

## Episode duration (Ct<30)



## Contact Characteristics

Site

Ref: Klerksdorp

Soweto

Age

Ref: <5 years

5-12 years

13-17 years

18-34 years

35-59 years

≥60 years

HIV status

Ref: Negative

Positive

Unknown

