

1 Time to Recovery from Diabetic Ketoacidosis and its Predictors among Adult Diabetic  
2 Ketoacidosis Patients in DEBRE MARKOS Referral Hospital, North West Ethiopia, 2021:  
3 Retrospective Cohort Study

4 Dessie Temesgen <sup>1\*</sup>, Yihun Miskir<sup>2</sup>, Getenet Dessie<sup>3</sup>, Ahmed Nuru<sup>4</sup>, Berihun Bantie Tesema <sup>5</sup>,  
5 Molla Azmeraw<sup>1</sup>, Abraham Teym<sup>6</sup>, Melesew Dagne<sup>1</sup>

6  
7 1 Department of Nursing, Collage of Health Science, Woldia University, Woldia, Ethiopia

8 2 Department of Emergency and Critical care Nursing , School of Health Science , Collage of  
9 Medicine and Health science , Bahirdar university , Northwest Ethiopia, Ethiopia

10 3 Department of Adult Health Nursing , School of Health Science , Collage of Medicine and  
11 Health science , Bahirdar university , Northwest Ethiopia, Ethiopia

12 4 Departments of Nursing, Collage of Health Science, Wolkitie University, Wolkitie, Ethiopia

13 5 Department of Adult Health Nursing, Collage of Medicine and Health science , Debre Tabor  
14 University , North west Ethiopia, Ethiopia

15 6 Departments of Environmental Health, Collage of Health Science, Debre Markose University,  
16 Debre Markose, Ethiopia

17

18 \*corresponding author

19 PO.Box - 400

20 E-mail: [des52.8t@gmail.com](mailto:des52.8t@gmail.com) (DT)

21

22

23

24 **Abstract**

25 **Introduction:** Diabetic ketoacidosis is an acute life-threatening complication of diabetes  
26 mellitus. With appropriate treatments, diabetic ketoacidosis patients are expected to make a full  
27 recovery within 24 hours. Previous studies did not address variables such as duration of diabetic  
28 ketoacidosis symptoms, and blood glucose level. In addition, the recovery time and its predictors  
29 of diabetic ketoacidosis in adult patients are not well known in Ethiopia.

30 **Objective:** To assess time to recovery from diabetic ketoacidosis and its predictors among adult  
31 diabetic ketoacidosis patients in Debre Markos referral hospital, North West Ethiopia, 2021

32 **Methods:** A retrospective cohort study was employed among 452 records of adult diabetic  
33 ketoacidosis patients who were admitted starting from January 1, 2016 to January 1, 2021 using  
34 their medical registration number. Data were entered into Epi-data version 4.6 and analyzed  
35 using Stata version 14. A Kaplan Meier survival curve was used to estimate diabetic  
36 ketoacidosis-free survival time. In addition, a generalized log-rank test was utilized to compare  
37 diabetic ketoacidosis-free survival time between different categorical explanatory variables. Cox  
38 proportional hazards model was used to identify predictors of time to diabetic ketoacidosis  
39 recovery time. Variables with a P-value < 0.25 in the bivariable analysis were entered into a  
40 multivariable Cox proportional hazards model to identify predictors of recovery time at  $p \leq 0.05$ .

41 **Result:** The median time to recovery from diabetic ketoacidosis for all observations was 24  
42 hours. Severity of diabetic ketoacidosis (AHR=0.24, 95%CI=0.16-0.35), duration of diabetic  
43 ketoacidosis (AHR=0.46, 95%CI 0.33-0.64), diabetes duration (AHR=1.74, 95%CI 1.35-2.25),  
44 and random blood sugar level (AHR=0.64, 95%CI= (0.51-0.79) were significant predictors of  
45 recovery time.

46 **Conclusion and recommendation:** The median time to recovery from diabetic ketoacidosis was  
47 relatively prolonged. The hospital shall give special attention to patients with the identified  
48 predictors. Further study using a prospective design by including admission pH and admission  
49 serum potassium level is advised.

50 **Keywords:**-Diabetic ketoacidosis, recovery time, Debre Markose, Ethiopia

51

## 52                    **Introduction**

53    Diabetic ketoacidosis (DKA) is the foremost common acute hyperglycemic crisis in individuals  
54    with diabetes mellitus (1). DKA occurs due to the consequence of an absolute or relative lack of  
55    insulin and concomitant elevation of counter-regulatory hormones, usually resulting in the triad  
56    of hyperglycemia, metabolic acidosis, and ketosis (2). If the initial diagnosis of type 1 diabetes is  
57    delayed or if type 2 DM precipitated by major surgery, severe illness such as myocardial  
58    infarction or infection usually presents with DKA (3, 4). DKA occurs mostly in young people  
59    with uncontrolled type 1 diabetes mellitus (T1DM) but can also occur in adults with poorly  
60    controlled type 2 diabetes mellitus (T2DM) (1, 2).

61    The American Diabetes Association(ADA) classifies DKA by severity depending on the degree  
62    of acidosis and altered sensorium as mild (Arterial pH 7.25–7.30 and Alert), moderate (Arterial  
63    pH7.00 to<7.24 and Alert/Drowsy), or severe (Arterial pH<7.00 and Stupor) (5). The diagnostic  
64    criteria for DKA accepted by most experts in the field are a blood glucose(BG) greater than 250  
65    mg/dL, pH lower than 7.3, serum bicarbonate lower than 15 mEq/L, increased anion gap  
66    metabolic acidosis >12, and a moderate degree of ketonemia (beta-hydroxybutyrate greater than  
67    3mmol(6, 7).

68    Episodes of DKA typically require an emergency department visit or hospital admission for the  
69    patient to receive insulin, intravenous (IV) fluids, and electrolyte correction (8). The  
70    individualization of treatment based on a careful clinical and laboratory assessment is needed  
71    including restoration of circulatory volume and tissue perfusion, resolution of hyperglycemia,  
72    and correction of electrolyte imbalance and acidosis(5). Most people are treated initially with  
73    intravenous insulin and a two-bag method of fluid replacement is often used intravenous fluid  
74    without dextrose initially and, upon volume correction, infusion with dextrose correction to  
75    prevent hypoglycemia caused by the insulin therapy(6). The management of DKA includes IVs  
76    administration of 1-2L of 0.9% NaCl over 1-2 h then continues 0.9% NaCl until BG level  
77    reached to 200-250 mg/dL then change to 5% dextrose in 0.45% NaCl and an IV bolus of regular  
78    human insulin of 0.1 U/kg, followed by a continuous infusion of 0.1 U/kg/h then reduce insulin  
79    rate to 0.05 U/kg/h when BG< 250 mg/dL; in addition to these if K<sup>+</sup> level is 3.3-5 mEq/L , add  
80    20-40 mEq potassium chloride to replacement fluid and if K<sup>+</sup> level <3.3 mEq/L hold insulin;  
81    give 20-30 mEq/h until > 3.3 (8). It is also important to treat any correctable underlying cause of  
82    DKA such as sepsis, myocardial infarction, or stroke (5).

83 Timely diagnosis, comprehensive clinical and biochemical evaluation, and effective management  
84 are key to the successful resolution of DKA(9). Resolution of DKA occurs when blood glucose  
85 is < 200 mg/dL and 2 of the following have occurred: a serum bicarbonate level  $\geq$  15 mEq/L, a  
86 venous pH > 7.3, a calculated anion gap  $\leq$  of 12 mEq/L, and blood ketones <0.6 mmol/L (10,  
87 11). Previous studies show that using standardized protocols for DKA management improves  
88 DKA recovery (12, 13).

89 DKA patients with appropriate treatment are expected to make a full recovery within 24 hours  
90 (9, 11, 14, 15). Prolonged recovery of DKA leads to hypoglycemia and hypokalemia (9), renal  
91 failure, coma, cerebral edema, cardiac arrhythmia(16, 17), lung edema with respiratory failure,  
92 and thromboembolic complications(18), and leads to death (19, 20).

93 Timely diagnosis and initiation of management of DKA is associated with the recovery and  
94 prevents hypoglycemia and hypokalemia (9); renal failure, coma, cerebral edema, and cardiac  
95 arrhythmia (16, 18), hyperchloremia metabolic acidosis, hypophosphatemia, and  
96 thromboembolic complications (18). This in turn decrease bed occupancy in the hospital, length  
97 of hospital stay and reduce the amount of human and material resource needed to control it as  
98 well as its complications.

99  
100 As DM prevalence has reached alarming levels, DKA and its complication are also increasing  
101 (4). Globally the incidence of DKA among T1DM adult patients ranges from 0–56 per 1000  
102 person-years (PYs) and eleven studies reported prevalence with a range of 0–128 per 1000  
103 people (21). In Ethiopia, a meta-analysis study reported there was a history of DKA in 19.9% of  
104 cases (both T1DM and T2DM) at Dessie Hospital, and in 62.0% of cases (for T1DM) at the  
105 Black Lion Hospital in Addis Ababa (22). Another study conducted in Dilla University Referral  
106 Hospital on the magnitude of DKA in newly diagnosed patients with T1DM was found to be  
107 38% (23) and in Hawassa university comprehensive specialized hospital was 40%; among them,  
108 28.2% and 11.8% were with T1DM and T2DM respectively(24).

109 DKA is the main reason for the hospitalization of patients with DM (25) and its treatment  
110 represents a substantial economic burden in terms of health care costs, both directly and  
111 indirectly, ranging from individual to national economy. For example in United Kingdom (UK),  
112 the average cost for an episode of diabetic ketoacidosis was £2064 per patient(26) and in the

113 United States of America (USA), the total charges among DKA patients in 2017 were  
114 \$6,757,748,178, with a mean of \$30,836.19(27).

115 Even though DKA patients with appropriate treatment are expected to make a full recovery  
116 within 24 hours (9, 11, 14, 15) the resolution time of DKA is longer in African countries. For  
117 example in South Africa the average time to resolution of DKA was 21 hours; excluding severe  
118 DKA, mild and moderate DKA had an average time to resolution of 20 hours (28) and in Kenya,  
119 the median time to resolution was 59 hours(29).

120 The study conducted in Australia reveals that independent predictors of a slower time to  
121 resolution of DKA are lower admission pH levels and higher admission potassium levels (30).  
122 The previous study recommends that regular review of patients' biochemical parameters and  
123 strict implementation of hospital protocols may reduce complications and shortens the recovery  
124 time of DKA (30).

125 The previous study did not address the rates and quantity of potassium supplementation  
126 prescribed, rates of other adverse events such as hypoglycemia, the duration of DKA, blood and  
127 glucose level. In addition, as far as my literature search, there was no study in Ethiopia reporting  
128 the estimated survival period of recovery from DKA. Therefore, this study will estimate the  
129 median time to recovery from DKA and its predictors among adult patients admitted to the  
130 Debre Markos referral hospital in Ethiopia.

131

132

133

134

135

136

137

138

139 **Methods and Materials**

140 **Study design**

141 An institution-based retrospective cohort study design was employed to assess time to recovery  
142 from DKA.

143 **Study area and period**

144 This study was conducted at Debre Markos referral hospital which is located in the city of Debre  
145 Markos 265 Km from Bahir-Dar and 300 kilometers from Addis Ababa. The hospital is the only  
146 referral hospital in the East Gojjam zone and serves around 3.5 million people and 100 health  
147 centers and 9 district hospitals are available in the catchment area of the referral hospital (44).  
148 According to information obtained from the administrative office of the hospital, around 348  
149 DKA patients are admitted per year. The study was conducted from January 1, 2016, to January  
150 1, 2021, among adults who were admitted with DKA, and registration charts were retrieved *from*  
151 March 18- April 18, 2021.

152 **Population**

153 **Source population**

154 All adult DKA patients admitted to Debre Markos referral hospital

155 **Study population**

156 Adult DKA patient admitted to Debre Markos referral hospital during the study period and  
157 whose charts were available

158 **Eligibility criteria**

159 **Inclusion criteria**

160 Adult DKA patients above 15 years old and admitted to the hospital with DKA

161 **Exclusion criteria**

162 Adult DKA patients who were admitted to the hospital with incomplete and unavailable medical  
163 records

164

165

166 **Sample size determination and procedure**

167 **Sample size determination**

168 To determine sample size predictors significantly associated with the outcome variable were  
 169 considered. Accordingly, the sample size was determined using a double population proportion  
 170 formula by considering the duration of DM and presence of CKD as predictor variables of DKA  
 171 recovery based on a study done in Saudi Arabia (33) by using Epi -info version 7 statistical  
 172 package. It is calculated by taking a two-sided significant level ( $\alpha$ ) of 5 %, 95% confidence level,  
 173 power 80 %, and 1:1 ratio of non-exposed to expose. Finally 464 were selected as the final  
 174 sample size for the study.

175  
 176 Table1: Sample size calculation for predictors of recovery of DKA among adults in Deber  
 177 Markose Referral Hospital, North West Ethiopia 2021

Variable	the proportion of outcome in exposed and non-exposed	HR	Sample size	Total sample size by adding 10%
Duration of DM	P1%=15.9% P2%=7.2%	2.21	422	464
CKD	P1%=41.6% P2%=10.4%	4	60	66

178 *P1: the proportion of outcome in exposed, P2: the proportion of outcome in non-exposed*

179 By adding 10% missing data then finally, the largest sample size (N= 464) will be selected as the  
 180 final sample size for the study.

181 **Sampling procedure**

182 The records of adults who were admitted with DKA in the hospital from January 1 2016 to  
 183 January 1 2021 were selected using MRN. The patient’s charts were selected using a simple  
 184 random sampling technique by a computer-generating method. Finally, data were extracted from  
 185 the selected medical charts.

186 **Variable of the study**

187 The outcome variable for this study is time to recovery from DKA. The independent variables in  
188 this study are age, sex, residence, admission PH, admission potassium, blood urea, serum  
189 creatinine, hemoglobin level, initial blood glucose level, urine ketone, severity of DKA,  
190 preceding infection of DKA, presence of Comorbidities, duration of DM, vital sign at  
191 presentation, frequency of DM follow up, treatment regimen, amount of IV fluid, potassium  
192 supplement, initiation time of management and glucocorticoid medication use.

193

194 **Operational definition**

195

196 **Event:** recovery from DKA during the study period

197 **Censored:** Referred, died, or discharged cases for any reason before recovery from DKA during  
198 the study period.

199 DKA: Adults admitted with blood glucose greater than 250 mg/dL, pH lower than 7.3, and a  
200 moderate degree of ketonemia ( $>3$ mmol)/positive urine ketone (6, 7).

201 DKA recovery time: the interval in hours between the first vascular filling to  
202 treat the DKA in the emergency room or the ICU to DKA resolution

203 DKA Resolution: the occurrence of the first blood ketone  $< 0.5$  mmol/l, or the second negative  
204 ketonuria (1 or 2 crosses) (32).

205 Prolonged DKA recovery: the resolution time of DKA is longer than 24 hours (9, 11, 14,15).

206 **Incomplete data:** when the ketone negative tests and initiation time of management are not  
207 recorded.

208 **Entry date:** the time of admission with DKA diagnosis

209 End date: until the admitted patient recovered from DKA or discharged

210 **Data collection procedure and tool**



211 **Data collection tool**

212 A structured data extraction tool was adapted by considering study variables such as socio-  
213 demographic, biochemical, clinical, and treatment predictors from literature and also by using  
214 WHO DKA follow sheet forms. A pretest was done on 24 participants of the study in Debre  
215 Markose hospital.

216 **Data collection procedure**

217 Patient records were retrieved using their unique registration number identified in the registration  
218 books. After obtaining a permission letter from the concerned body, charts and records were  
219 reviewed and data were extracted using an English data extraction form by trained two BSC  
220 nurses and supervised by one BSC nurse. Only index cases were included and recurrent episodes  
221 of DKA were excluded to avoid selection bias.

222 **Quality Assurance**

223 To keep data quality the supervisor and data collectors were trained on how and what  
224 the information they should collect from the targeted data sources. Data extraction forms were  
225 checked for completeness and missing information before data collection. The completeness of  
226 the collected data was checked onsite daily during data collection and give prompt feedback by  
227 the supervisor. Besides this, the principal investigator was carefully entered and thoroughly  
228 cleans the data before the commencement of the analysis.

229 **Data Processing and Analysis**

230 The data were coded, cleaned, and checked for completeness and consistency. Data were entered  
231 into Epi-data version 4.6 and analyzed using Stata Version 14.2.0 software. A Kaplan Meier  
232 survival curve was used to estimate DKA-free survival time. In addition, a generalized log-rank  
233 test was utilized to compare DKA free survival time between different categorical explanatory  
234 variables. Pair-wise comparison tests were done to check the presence of multicollinearity  
235 between each independent variable. Bivariable and Multivariable Cox proportional hazards  
236 models were fitted to identify predictors of time to DKA recovery incidence. The necessary  
237 assumptions of the Cox proportional hazards model were verified by log minus log plot, COX-  
238 Snell residuals for the goodness of fit and global test. Variables with P value < 0.25 in Bivariable  
239 analysis were entered into the multivariable Cox proportional hazards model to identify

240 predictors of recovery time at  $p \leq 0.05(45)$ . Hours were used as a time scale to calculate time to  
241 recovery. The outcome of each participant was dichotomized into censored or event (recovered).

## 242 **Ethical Consideration**

243 Ethical clearance was obtained from the institutional review board of Bahir Dar University,  
244 College of Medicine and Health Sciences (Ref. No: MD/11724/144). The formal letter was  
245 submitted to Debre-Markos referrals hospital for data collection and permission was assured. All  
246 information collected from patient cards was kept strictly confidential. Consent was not  
247 requested as it was a retrospective study.

## 248 **Result**

### 249 **Socio-demographic characteristics**

250 A total of 1281 adult DKA patients were admitted to Debre Markos referral hospital during the  
251 study period. Four hundred sixty -four (464) patients' charts were selected by computer-  
252 generated random sampling technique and 452 patient's charts were eligible among selected  
253 charts for this study and were included in the study. The median age of the participants was 25  
254 years IQR (20-33). The majority of DKA adult patients were males and came from rural areas  
255 295(65.27%) and 287(63.50%) respectively (Table 2).

256 Table 2: Socio-demographic characteristics among adult DKA patients, DMRH, North West  
257 Ethiopia, January 1, 2016 to January 1, 2021

Variable	Category	Frequency	Percent (%)
Age(years)	15-24	216	47.8
	25-34	132	29.2
	35-44	49	10.84
	45-54	39	8.63
	$\geq 55$	16	3.54
Sex	Male	295)	65.3
	Female	157	34.7
Residence	Urban	165	36.5
	Rural	287	63.5

258  
259  
260  
261

## 262 **Clinical characteristics and biochemical profile**

263 Most DKA adult patients 296(65.49%) had previous DM history and 376 (83.19%) were T1DM.  
264 The most common clinical presentations of adult DKA patients were poly symptoms (97.35%),  
265 nausea/vomiting (64.30%), and fatigue (53.10%). The median time of duration of DKA  
266 symptoms till the treatment of the participant was 48hr IQR (96-24). Adult DKA patient's  
267 clinical presentation of the severity of DKA mild, moderate, and severe was 64.38%, 22.57%,  
268 and 13.05% respectively. One hundred ninety-six (43.36%) of the study participants had  
269 previous DKA episodes, also 72(15.93%) and 159(35.18%) had an infection before DKA and  
270 acute recent illness respectively.

271 Among adult DKA patients, who had a DM history 89(19.69%) had co-morbidity. The most  
272 frequent comorbidity was HTN 40 (44.94%) (Table3).

273 Table 3: Baseline clinical characteristics among adult DKA patients, DMRH, North West  
274 Ethiopia, January 1, 2016 to January 1, 2021

Clinical characteristics	Categories	Total No	Percent (%)
nausea/vomiting	Yes	290	64.30
	No	161	35.70
abdominal pain	Yes	53	11.73
	No	399	88.27
Fatigue	Yes	240	53.10
	No	212	46.90
poly symptoms	Yes	440	97.35
	No	12	2.65
Kussmaul respiration	Yes	90	19.91
	No	362	80.09

loss of consciousness	Yes	68	15.04
	No	384	84.96
Type of DM	T1DM	376	83.19
	T2DM	76	16.81
Type of DM Comorbidity	CVD	16	17.98
	CKD	20	22.47
	HTN	40	44.94
	Asthma	7	7.87
	others**	6	6.74

275 (\*\* diabetic foot ulcer, sexual dysfunction, and chronic obstructive airway disease)

#### 276 **Time to recovery of adult DKA patients**

277 The median time to recovery from DKA for all observations was 24 hrs. IQR (12-37). The  
 278 median recovery time of adults from DKA was different regarding different categories of  
 279 biochemical and clinical characteristics. For instance, the median recovery time of mild DKA  
 280 and moderate DKA was 18hrs and 30 hrs. Whereas in severe DKA was 49hrs (Table 4).

281 Table 4: The median time to recovery, and comparison of DKA free time among adult DKA  
 282 patients, DMRH, North West Ethiopia, January 1, 2016 to January 1, 2021

Variable	Category	Survival status of DKA		Total No (%)	Median recovery time (95%CI)	Log-rank (P-value)
		Recovered No (%)	censored No (%)			
DM history	Yes	282(65.73)	14(60.87)	296(65.49)	24(23-25)	0.73
	NO	147(34.27)	9(39.13)	156(34.51)	24(22-27)	
Type of DM	T1DM	355 (82.75)	21(91.30)	376(83.19)	24(23-25)	0.62
	T2DM	74 (17.25)	2(8.70)	76(16.81)	25(20-28)	
Diabetes duration	≤ 5 years	210(48.95)	10(43.48)	219(48.67)	28(25 -30)	<0.001*
	>5 years	109(25.41)	9(39.13)	118(26.11)	16(14 -20)	

	Newly diagnosis	110(25.64)	4(17.39)	114(25.22)	24(18-25)	
Comorbidity of DM	Yes	86(20.05)	3(13.04)	89(19.69)	26(24 -30)	0.31
	NO	343(79.95)	20(86.96)	363(80.31)	24(23-25)	
history of DKA episodes	Yes	188(43.82)	8(34.78)	196(43.36)	26(24 -28)	0.04*
	NO	241(56.18)	15(65.22)	256(56.64)	24(20-24)	
Severity of DKA	Mild	278(64.80 )	13(56.52)	291(64.38)	18(15-20)	<0.001*
	Moderate	96 (22.38)	6(26.09)	102(22.57)	30(26-40)	
	Severe	55(12.82)	4(17.39)	59(13.05)	49(39 -72)	
Duration of DKA	<=24 hrs.	150 (34.97)	7(30.43)	153(33.85)	20(15-24)	<0.001*
	25-48hrs	75(17.48)	5(21.74)	74(16.37)	24(19 -26)	
	49-96hrs	143(33.33)	7(30.43)	142(31.42)	26(25-29)	
	≥97hrs	61(14.22)	4(17.39)	83(18.36)	25(23-33)	
infection before DKA	Yes	71(16.55)	1(4.35)	72(15.93)	30(25-34)	0.005*
	NO	358(83.45)	22(95.65)	380(84.07)	24(22-24)	
acute recent illness	Yes	149(34.73)	10(43.48)	159(35.18)	30(26-35)	<0.001*
	NO	280(65.27)	13(56.52)	293(64.82)	22(19- 24)	
RBS in mg/dL	≤500	254(59.21)	14(60.87)	268(59.29)	20(17-23)	<0.001*
	>500	175(40.79 )	9(39.13)	184(40.71)	31(27 -35)	

283

#### 284 **The incidence rate of recovery from DKA**

285 From 452 study participants, 429 (94.9%) adults were recovered and the rest 23(5.1%) were  
 286 censored observations. The lowest and the highest length of follow-up were 3.5 and 102 hours  
 287 respectively, and the total person-time risk was 12546.513. The overall recovery rate from DKA  
 288 was 3.42 per 100 person-hours observation (95% CI: 3.11–3.76). The recovery rate among  
 289 severity of DKA in mild, moderate, and severe was 4.93 per 100 person-hours (95% CI: 4.38-  
 290 5.54), 2.61 per 100 person-hours (95% CI: 2.14 -3.19), and 1.71 per 100 person-hours (95% CI:  
 291 1.31–2.22) respectively.

## 292 **Survival estimates for time to recovery**

293 The DKA free time of adults with DKA was estimated by the Kaplan-Meier survival curve.  
294 The curve tends to decrease rapidly within the first 24hrs indicating that most adults recovered  
295 from DKA within this time (Fig 1). The survival estimates of DKA patients were varied among  
296 severity, duration of DM, duration of DKA, and RBS level (Figs 2-4).

## 297 **Comparison of survival status**

298 Log-Rank test was used to compare survival time between categories of different predictors.  
299 Based on this test, survival time among different groups of predictors such as severity, duration  
300 of DM, duration of DKA, presence of infection before DKA and acute recent illness, and RBS  
301 level were significantly different in survival time at a 5% level of significance (Tables 2 & 3).

## 302 **Predictors of recovery time from DKA**

303 In the Bivariable Cox, Proportional Hazards regression model; DM duration, infection before  
304 DKA, duration of DKA, acute recent illness, RBS level, and severity of DKA were all associated  
305 with DKA recovery ( $P < 0.05$ ). Predictors that had association at a p-value of  $\leq 0.25$  in bivariable  
306 Cox regression and non-collinear independent variables were included in multivariable Cox  
307 regression. In the multivariable analysis, the AHR of the severity of DKA, duration of DKA, DM  
308 duration, and RBS level was estimated as independent predictors of time to recovery with a value  
309 of  $p < 0.05$ .

310 The recovery time was delayed by 76% (AHR=0.24, 95% CI=0.16-0.35) among severe DKA  
311 adult patients as compared with mild DKA adult patients. Also, the recovery time was delayed  
312 by 54% (AHR=0.46, 95%CI=0.35-0.59) among moderate DKA adult patients as compared with  
313 mild DKA adult patients. Adult DKA patients with RBS  $>500\text{mg/dL}$  had slower recovery as  
314 compared with those who had RBS  $\leq 500\text{mg/dL}$  (AHR=0.64, 95%CI= (0.51-0.79). DKA adult  
315 patients with  $>5$ years duration of DM follow-up had 74% faster recovery as compared with those  
316 who had a follow-up of DM duration  $\leq 5$  years (AHR=1.74, 95%CI 1.35-2.25).

317 Adult DKA patients with  $\geq 97$ hrs of duration DKA till treatment had slower recovery as  
318 compared with those who had  $\leq 24$ hrs (AHR=0.46, 95%CI 0.33- 0.64).

319 Table 5:-Results of the Bivariable and Multivariable cox proportional hazards regression  
320 analysis of adult DKA patients, DMRH, North West Ethiopia, January 1 2016 to January 1 2021

Variable	Category	Recovered	Censored	Crude HR (95%:CI)	AHR (95%:CI)	P-value
Residence	Urban	158	7	1		
	Rural	271	16	0.79(0.64-0.96)	1.06 (0.86-1.30)	0.59
Severity of DKA	Mild	278	13	1		
	Moderate	96	6	0.38(0.30-0.49)	0.46(0.35-0.59)	< 0.001*
	Sever	55	4	0.16(0.11 - 0.23)	0.24(0.17-0.36)	< 0.001*
duration of DKA	≤24hrs	150	7	1		
	25-48hrs	75	5	0.77 (0.58 -1.01)	0.86(0.64-1.15)	0.30
	49-96hrs	143	7	0.64(0.51-0.81)	0.79(0.62-1.01)	0.64
	≥97hrs	61	4	0.44(0.32- 0.59)	0.46(0.33-0.64)	< 0.001*
DM duration	≤ 5 years	210	10	1		
	>5 years	109	9	2.29(1.80-2.90)	1.74(1.35-2.25)	< 0.001*
	Newly diagnosis	110	4	1.48(1.17-1.87)	1.38(1.05-1.79)	0.02*
infection before DKA	Yes	71	6	0.70(0.54-0.90)	1.06(0.79-1.43)	0.69
	NO	358	17	1		
acute recent illness	Yes	149	10	0.59(.48-0.73)	0.81(0.64-1.03)	0.08
	NO	280	13	1		
RBS in mg/dL	≤500	254	14	1		
	>500	175	9	0.44(0.36-0.54)	0.64(0.51-0.79)	< 0.001*

321 \*p-value<0.05

322

323 **Overall model fitness test**

324 Figure (5) below shows the overall model fitness of the data in Cox Proportional hazards  
325 regression model. In the present finding, the hazard function follows the 45° line very closely.  
326 This indicates as the Cox model does fit these data to reasonable. Hence, the Cox Snell residuals  
327 test shows overall the goodness of fitness of the model (the model is a good fit).

328 **Test of proportional-hazards assumption**

329 The findings indicated that all variables included in the model satisfied PH assumptions (p  
330 value>0.05). So the model is a good fit (Table 6).

331 Table 6:-Goodness-of-fit test is assessing proportional hazards Assumption

predictors	rho	chi2	Df	P-value
Residence	0.00077	0.00	1	0.9868
severity moderate	0.06463	1.84	1	0.1749
severity sever	-0.00474	0.01	1	0.9194
DM duration	-0.03575	0.56	1	0.4552
DM duration	-0.07950	2.64	1	0.1040
duration of DKA 25-48hrs	-0.04412	0.87	1	0.3521
duration of DKA 49-96hrs	0.07807	2.57	1	0.1086
duration of DKA ≥97hrs	0.02326	0.22	1	0.6370
Infection before DKA	0.00922	0.04	1	0.8498
Acute recent illness	0.04316	0.77	1	0.3799
RBS level	0.03597	0.59	1	0.4431
global test		12.69	11	0.3142

332

333 **Discussion**

334 This study was conducted to determine the time to recovery from DKA and its predictors. The  
335 median time to recovery was 24hrs (IQR 12-37). The finding of this study is almost consistent  
336 with what was observed in a study conducted in South Africa(28), and prolonged when  
337 compared with studies conducted in Australia(30) and in Thailand(31).On the contrary, it is  
338 faster than a study done in Kenya(29). The possible reason for this discrepancy could be related



339 to the difference in the standard treatment protocol because studies show that there is an  
340 improved clinical outcome associated with insulin pump therapy compared with injection  
341 therapy(9, 46). The other possible reason may be due to low socio-economic status since low  
342 educational level increased the risk of severe DKA that leads to prolonged recovery time (47).

343 The severity of DKA, duration of DKA, DM duration, and RBS level were independent  
344 predictors of time to recovery. The recovery time was delayed by 76% among severe DKA adult  
345 patients as compared with mild DKA adult patients. This finding is supported by the study  
346 conducted in South Africa identifies severe DKA was correlated with a longer time to resolution  
347 (28). The possible reason in this study could be due to the disease pathophysiology, patients with  
348 severe DKA had more electrolyte abnormalities compared with the mild and moderate forms of  
349 the disease(48) which is supported with a study conducted in Australia showed that higher  
350 admission potassium levels are independent predictors of a slower time to resolution of  
351 DKA(30).

352 Adult DKA patients with RBS >500mg/dL had slower recovery as compared with those who had  
353 RBS  $\leq$ 500mg/dL. This finding is supported by a study that revealed initial blood glucose was a  
354 significant predictor of rapid resolution of DKA patients(36). This is possibly due to extremely  
355 high blood glucose concentrations result in loss of blood volume, low blood pressure, and  
356 impaired central nervous system function (hyperglycemic coma) that prolonged DKA recovery  
357 (49).

358 DKA adult patients with >5years duration of DM follow-up had 74% faster recovery as  
359 compared with those who had follow-up DM duration  $\leq$  5 years. This finding is consistent with a  
360 study in Saudi Arabia, patients who had a duration of one to five years of diabetes mellitus were  
361 almost five times more likely to get out of DKA in more than 72 hours when compared with  
362 those who had a duration of more than five years(33). A shorter duration of diabetes has been  
363 associated with both higher levels of HbA<sub>1c</sub> and risk of all-cause hospitalizations in adults (50).  
364 In this study, a shorter duration of diabetes was predictive of slower recovery of diabetic  
365 ketoacidosis. This may be due to those DKA patients with a shorter duration of diabetes may be  
366 less knowledgeable and experienced with diabetes management, and correspondingly less  
367 adherent to insulin adjustment and diabetes management(51).

368 Adult DKA patients with  $\geq 97$ hrs of duration DKA till treatment had slower recovery as  
369 compared with those who had  $\leq 24$  hrs. This finding is in line with a study performed in Kenya  
370 that revealed delays in initiation of management have contributed to the prolonged DKA  
371 resolution times (29). This could be due to timely diagnosis and initiation of management of  
372 DKA is associated with faster recovery(9).

### 373 **Conclusions**

374 The median time to recovery from DKA was relatively prolonged. The severity of DKA,  
375 duration of DKA, DM duration, and RBS level were statistically significant predictors of time to  
376 recovery time from DKA. Therefore, we highly recommend Health care providers shall closely  
377 monitor and follow particularly for those who have a shorter duration of DM follow-up and  
378 severe DKA and give health education to the DM patients to come the health facility  
379 immediately when they become ill. We also recommend further study using a prospective  
380 design by including admission pH and admission serum potassium level to fill its limitation.

381

382

### 383 **Abbreviations and Acronyms**

384	ADA	American Diabetes Association
385	BG	Blood Glucose
386	CKD	Chronic Kidney Disease
387	CVD	Cardio Vascular Disorder
388	DKA	Diabetic Ketoacidosis
389	DM	Diabetes Mellitus
390	ETB	Ethiopian Birr
391	HTN	Hypertension
392	IV	Intravenous
393	RBS	Random Blood Sugar
394	T1DM	Type 1 Diabetes Mellitus
395	T2DM	Type 2 Diabetes Mellitus
396	UK	United Kingdom

397 USA United States of America

## 398 **Declarations**

### 399 **Consent for publication**

400 Not applicable

### 401 **Availability of data and material**

402 All relevant data's for this study presented within the manuscript and supportive files.

### 403 **Competing interests**

404 All authors have declared that they have no conflicting interests.

### 405 **Authors' contributions**

406 **DT:** Formulating research problem, design of study, data collection, analysis, interpretation,  
407 conclusion, preparing initial manuscript draft

408

409 **GD, YM, BBT-** Actively participated in data collection, analysis and interpretation, and writing  
410 up manuscript. All authors had thoroughly read and approved the manuscript.

### 411 **Funding**

412 A total of 25, 000 ETB was obtained from Woldia University for the overall work of this study

413

414

415

416

417

## 418 **Acknowledgment**

419 We would like to express our deepest gratitude to Bahir Dar University, College of Medicine  
420 and Health Science for letting us to conduct this. Next, we also advance our profound thanks to  
421 Debere Markose referral Hospital staff working at diabetes Clinic, Card room and administration  
422 position providing us valuable data's on source population and aiding us on chart retrieval. Last  
423 but not least, our special thanks go to data collectors and the supervisor for their willingness,  
424 commitment, and intensive works during data collection for the betterment of this research.

425

## 426 **Reference**

- 427 1. Dhatariya KK, Glaser NS, Codner E, Umpierrez GE. Diabetic ketoacidosis. Nature  
428 Reviews Disease Primers. 2020;6(1):1-20.
- 429 2. Eledrisi MS, Elzouki A-N. Management of Diabetic Ketoacidosis in Adults: A Narrative  
430 Review. Saudi J Med Med Sci. 2020;8(3):165-73.
- 431 3. Agarwal A, Yadav A, Gutch M, Consul S, Kumar S, Prakash V, et al. Prognostic Factors  
432 in Patients Hospitalized with Diabetic Ketoacidosis. Endocrinol Metab (Seoul). 2016;31(3):424-  
433 32.
- 434 4. Williams R, Colagiuri S, Chan J, Gregg E, Ke C, Lim L-L, et al. IDF Atlas 9th Edition  
435 20192019.
- 436 5. American Diabetes Association. Diabetes Care in the Hospital:Standards of Medical Care  
437 in Diabetes Diabetes Care. 2020;43(Supplement 1):S193.
- 438 6. Diabetic ketoacidosis. Nature Reviews Disease Primers. 2020;6(1):41.
- 439 7. Umpierrez GE. Hyperglycemic Crises: Diabetic Ketoacidosis and Hyperglycemic  
440 Hyperosmolar State. In: Bonora E, DeFronzo RA, editors. Diabetes Complications,  
441 Comorbidities and Related Disorders. Cham: Springer International Publishing; 2020. p. 595-  
442 614.
- 443 8. Kreider KE. Updates in the management of diabetic ketoacidosis. The Journal for Nurse  
444 Practitioners. 2018;14(8):591-7.
- 445 9. Gosmanov AR, Gosmanova EO, Kitabchi AE. Hyperglycemic crises: diabetic  
446 ketoacidosis (DKA), and hyperglycemic hyperosmolar state (HHS). Endotext [Internet]:  
447 MDText. com, Inc.; 2018.

- 448 10. Kitabchi AE, Umpierrez GE, Miles JM, Fisher JN. Hyperglycemic Crises in Adult  
449 Patients With Diabetes. *Diabetes Care*. 2009;32(7):1335.
- 450 11. Muneer M, Akbar I. Acute Metabolic Emergencies in Diabetes: DKA, HHS and EDKA.  
451 In: Islam MS, editor. *Diabetes: from Research to Clinical Practice: Volume 4*. Cham: Springer  
452 International Publishing; 2021. p. 85-114.
- 453 12. Mohamed M, Assal A, Boyle L, Kwok E, DeSousa F, Karovitch A, et al. Development  
454 and Implementation of a Diabetic Ketoacidosis Protocol for Adults With Type 1 and Type 2  
455 Diabetes at a Tertiary Care Multicampus Hospital. *Can J Diabetes*. 2019;43(4):256-60.e3.
- 456 13. Evans K. Diabetic ketoacidosis: update on management. *Clinical Medicine*.  
457 2019;19(5):396.
- 458 14. Diabetes Service. Diabetic Ketoacidosis Management in Adults with Type 1 Diabetes.  
459 2019.
- 460 15. NHS. Management of Diabetic Ketoacidosis in Adults Clinical Guideline. 2019
- 461 16. Homa Ilkhanipour, Hossein Moravej, et.al (2017) Outcome of Patients with Diabetic  
462 Ketoacidosis in South of Iran. *J Endocrinol Diab*. 4(2):1-6. DOI:  
463 <http://dx.doi.org/10.15226/2374-6890/4/2/00177>.
- 464 17. Ahuja W, Kumar N, Kumar S, Rizwan A. Precipitating Risk Factors, Clinical  
465 Presentation, and Outcome of Diabetic Ketoacidosis in Patients with Type 1 Diabetes. *Cureus*.  
466 2019;11(5):e4789.
- 467 18. Rodríguez-Gutiérrez R, Vélez-Viveros CA, Portillo-Sanchez P, Lavallo-Gonzalez FJ,  
468 Sieradzki J, Płaczkiwicz-Jankowska E. Diabetic Ketoacidosis. *McMaster Textbook of Internal*  
469 *Medicine*. Kraków: Medycyna Praktyczna.  
470 <https://empendium.com/mcmtextbook/chapter/B31.II.13.3.1>. Accessed December 16, 2020.
- 471 19. Dhatariya KK, Vellanki P. Treatment of diabetic ketoacidosis (DKA)/hyperglycemic  
472 hyperosmolar state (HHS): novel advances in the management of hyperglycemic crises (UK  
473 versus USA). *Current diabetes reports*. 2017;17(5):33.
- 474 20. Gibb FW, Teoh WL, Graham J, Lockman KA. Risk of death following admission to a  
475 UK hospital with diabetic ketoacidosis. *Diabetologia*. 2016;59(10):2082-7.
- 476 21. Farsani SF, Brodovicz K, Soleymanlou N, Marquard J, Wissinger E, Maiese BA.  
477 Incidence and prevalence of diabetic ketoacidosis (DKA) among adults with type 1 diabetes  
478 mellitus (T1D): a systematic literature review. *BMJ open*. 2017;7(7):e016587.

- 479 22. Abebe N, Kebede T, Addise D. Diabetes in Ethiopia 2000–2016 prevalence and related  
480 acute and chronic complications; a systematic review. *Afr J Diabetes Med.* 2017;25(2):7-12.
- 481 23. Eskeziya A, Girma Z, Mandefreo B, Haftu A. Prevalence of Diabetic Keto Acidosis and  
482 Associated Factors among Newly Diagnosed Patients with Type One Diabetic Mellitus at Dilla  
483 University Referral Hospital, September 9th/2017 – May 30th/2019: South Ethiopia;  
484 Crosssectional Study. *Healthcare*  
485 2020;3(1):33-8.
- 486 24. Bedaso A, Oltaye Z, Geja E, Ayalew M. Diabetic ketoacidosis among adult patients with  
487 diabetes mellitus admitted to emergency unit of Hawassa university comprehensive specialized  
488 hospital. *BMC Research Notes.* 2019;12(1):137.
- 489 25. Kefale A, Eshetie T, Gudina E. Hospitalization Pattern and Treatment Outcome Among  
490 Diabetic Patients Admitted to a Teaching Hospital in Ethiopia: A Prospective Observational  
491 Study. *Journal of Health, Medicine and Nursing.* 2016;28:34-41.
- 492 26. Dhatariya KK, Skedgel C, Fordham R. The cost of treating diabetic ketoacidosis in the  
493 UK: a national survey of hospital resource use. *Diabetic medicine : a journal of the British*  
494 *Diabetic Association.* 2017;34(10):1361-6.
- 495 27. Ramphul K, Joynauth J. An Update on the Incidence and Burden of Diabetic  
496 Ketoacidosis in the U.S. *Diabetes Care.* 2020;43(12):e196.
- 497 28. Thomas S, Mohamed NA, Bhana S. Audit of diabetic ketoacidosis management at a  
498 tertiary hospital in Johannesburg, South Africa. *South African medical journal = Suid-Afrikaanse*  
499 *tydskrif vir geneeskunde.* 2019;109(6):407-11.
- 500 29. Abunga DK. An Audit Of The Management Of Diabetic Ketoacidosis At The Kenyatta  
501 National Hospital: University of Nairobi; 2018.
- 502 30. Lee MH, Calder GL, Santamaria JD, MacIsaac RJ. Diabetic ketoacidosis in adult  
503 patients: an audit of factors influencing time to normalisation of metabolic parameters. *Internal*  
504 *medicine journal.* 2018;48(5):529-34.
- 505 31. Thewjitcharoen Y, Plianpan P, Chotjirat A, Nakasatien S, Chotwanvirat P, Wanothayaroj  
506 E, et al. Clinical characteristics and outcomes of care in adult patients with diabetic ketoacidosis:  
507 A retrospective study from a tertiary diabetes center in Thailand. *Journal of clinical &*  
508 *translational endocrinology.* 2019;16:100188.

- 509 32. Balmier A, Dib F, Serret-Larmande A, De Montmollin E, Pouyet V, Sztrymf B, et al.  
510 Initial management of diabetic ketoacidosis and prognosis according to diabetes type: a French  
511 multicentre observational retrospective study. *Annals of intensive care*. 2019;9(1):91.
- 512 33. Alotaibi A, Aldoukhi A, Albdah B, Alonazi JA, Alseraya AS, Alrasheed N. Diabetic  
513 Ketoacidosis Treatment Outcome and Associated Factors Among Adult Patients Admitted to the  
514 Emergency Department and Medical Wards at King Abdulaziz Medical City, Riyadh, Saudi  
515 Arabia. *Cureus*. 2020;12(8).
- 516 34. Singh H, Saroch A, Pannu AK, Sachin H, Sharma N, Dutta P. Clinical and biochemical  
517 profile, precipitants and prognostic factors of diabetic ketoacidosis: A retrospective study from a  
518 tertiary care center of north India. *Diabetes & Metabolic Syndrome: Clinical Research &*  
519 *Reviews*. 2019;13(4):2357-60.
- 520 35. Goad NT, Bakhru RN, Pirkle JL, Kenes MT. Association of Hyperchloremia With  
521 Unfavorable Clinical Outcomes in Adults With Diabetic Ketoacidosis. *Journal of intensive care*  
522 *medicine*. 2020;35(11):1307-13.
- 523 36. Hochstetler A, Ferreira J, Aaronson P, Palfrey W, Heiner K. 322: EVALUATION OF  
524 CLINICAL PREDICTORS LEADING TO RAPID RESOLUTION OF DIABETIC  
525 KETOACIDOSIS IN ADULTS. *Critical Care Medicine*. 2020;48(1):143.
- 526 37. Self WH, Evans CS, Jenkins CA, Brown RM, Casey JD, Collins SP, et al. Clinical  
527 Effects of Balanced Crystalloids vs Saline in Adults With Diabetic Ketoacidosis: A Subgroup  
528 Analysis of Cluster Randomized Clinical Trials. *JAMA Network Open*. 2020;3(11):e2024596-e.
- 529 38. Munir I, Fargo R, Garrison R, Yang A, Cheng A, Kang I, et al. Comparison of a 'two-bag  
530 system' versus conventional treatment protocol ('one-bag system') in the management of diabetic  
531 ketoacidosis. *BMJ open diabetes research & care*. 2017;5(1):e000395-e.
- 532 39. Morton A. Review article: Ketoacidosis in the emergency department. *Emergency*  
533 *medicine Australasia : EMA*. 2020;32(3):371-6.
- 534 40. Dagim Assefa Kassaye, Worku Dugassa Girsha, Godana Jarso Guto, Haji Aman  
535 Deybasso. Diabetic Ketoacidosis Treatment Outcome and Associated Factors Among Adult  
536 Patients Admitted to Medical Wards of Adama Hospital Medical College, Oromia, Ethiopia.  
537 *American Journal of Internal Medicine*. 2018;6(2):34-42.

- 538 41. Sheung N, Beechar A, Belalcazar LM. Nonsevere Diabetic Ketoacidosis and Adrenal  
539 Insufficiency: Exploring the Impact of Glucocorticoid Replacement on Metabolic Outcomes and  
540 ICU Length of Stay. *Critical care explorations*. 2020;2(11):e0260.
- 541 42. Abegaz TM, Mekonnen GA, Gebreyohannes EA, Gelaye KA. Treatment Outcome of  
542 Diabetic Ketoacidosis Among Patients Attending General Hospital in North-West Ethiopia:  
543 Hospital Based Study. *bioRxiv*. 2018:441964.
- 544 43. Xu AC, Broome DT, Bena JF, Lansang MC. Predictors for adverse outcomes in diabetic  
545 ketoacidosis in a multihospital health system. *Endocrine practice : official journal of the*  
546 *American College of Endocrinology and the American Association of Clinical Endocrinologists*.  
547 2020;26(3):259-66.
- 548 44. Assefa B, Zeleke H, Murugan R, Wondwossen K. Incidence and predictors of diabetic  
549 ketoacidosis among children with diabetes in west and east Gojjam zone referral hospitals,  
550 northern Ethiopia, 2019. *Italian Journal of Pediatrics*. 2020;46(1):1-9.
- 551 45. Hosmer Jr DW, Lemeshow S, Sturdivant RX. *Applied logistic regression*: John Wiley &  
552 Sons; 2013.
- 553 46. Karslioglu French E, Donihi AC, Korytkowski MT. Diabetic ketoacidosis and  
554 hyperosmolar hyperglycemic syndrome: review of acute decompensated diabetes in adult  
555 patients. *BMJ*. 2019;365:l1114.
- 556 47. Lee HJ, Yu HW, Jung HW, Lee YA, Kim JH, Chung HR, et al. Factors Associated with  
557 the Presence and Severity of Diabetic Ketoacidosis at Diagnosis of Type 1 Diabetes in Korean  
558 Children and Adolescents. *Journal of Korean medical science*. 2017;32(2):303-9.
- 559 48. Barski L, Nevzorov R, Rabaev E, Jotkowitz A, Harman-Boehm I, Zektser M, et al.  
560 Diabetic ketoacidosis: clinical characteristics, precipitating factors and outcomes of care. *Sat*.  
561 2012;26:20.
- 562 49. Westerberg DP. Diabetic ketoacidosis: evaluation and treatment. *American family*  
563 *physician*. 2013;87(5):337-46.
- 564 50. Govan L, Wu O, Briggs A, Colhoun HM, Fischbacher CM, Leese GP, et al. Achieved  
565 levels of HbA1c and likelihood of hospital admission in people with type 1 diabetes in the  
566 Scottish population: a study from the Scottish Diabetes Research Network Epidemiology Group.  
567 *Diabetes Care*. 2011;34(9):1992-7.



568 51. Butalia S, Johnson J, Ghali W, Rabi D. Clinical and socio-demographic factors associated  
569 with diabetic ketoacidosis hospitalization in adults with Type 1 diabetes. *Diabetic medicine*.  
570 2013;30(5):567-73.

571

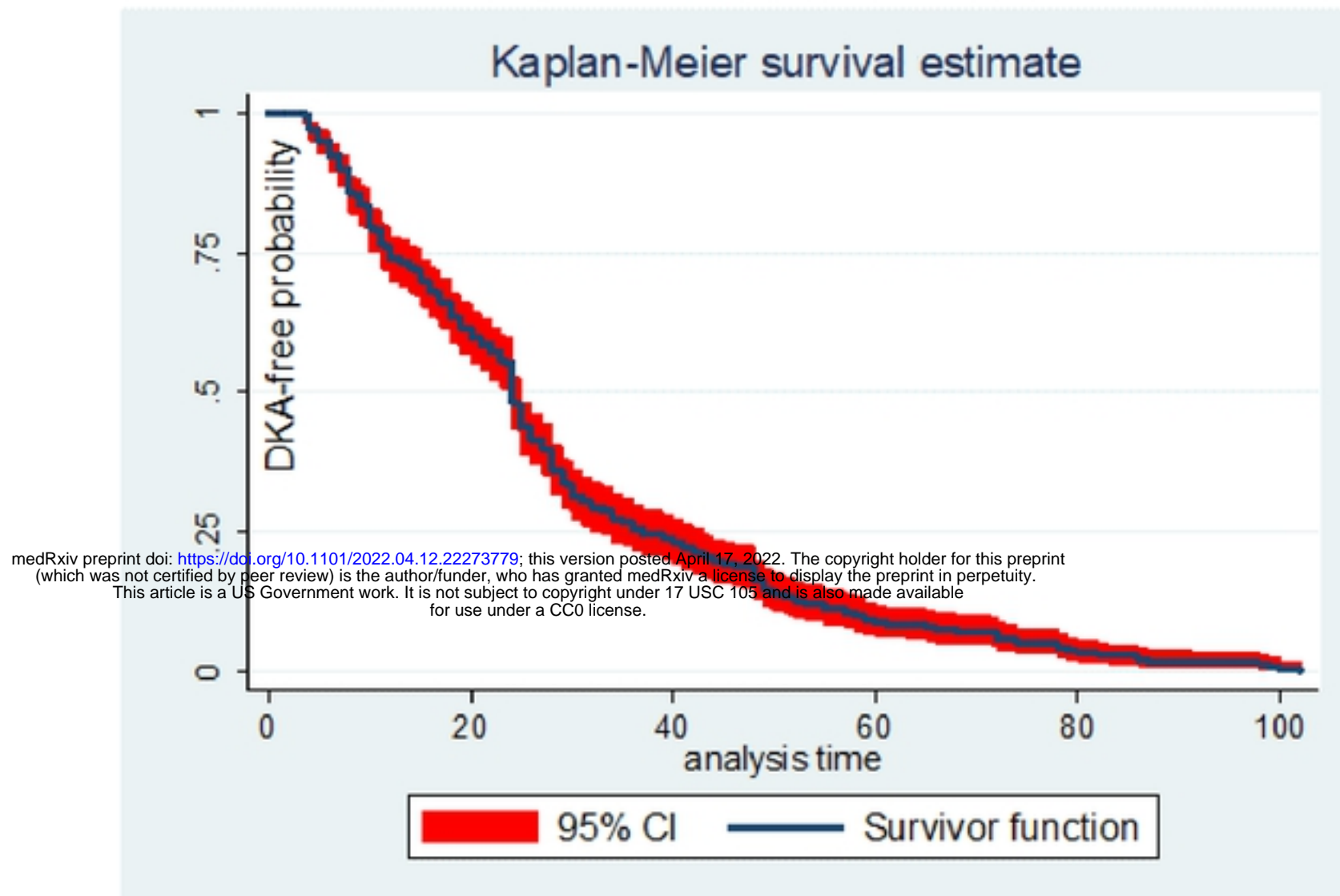
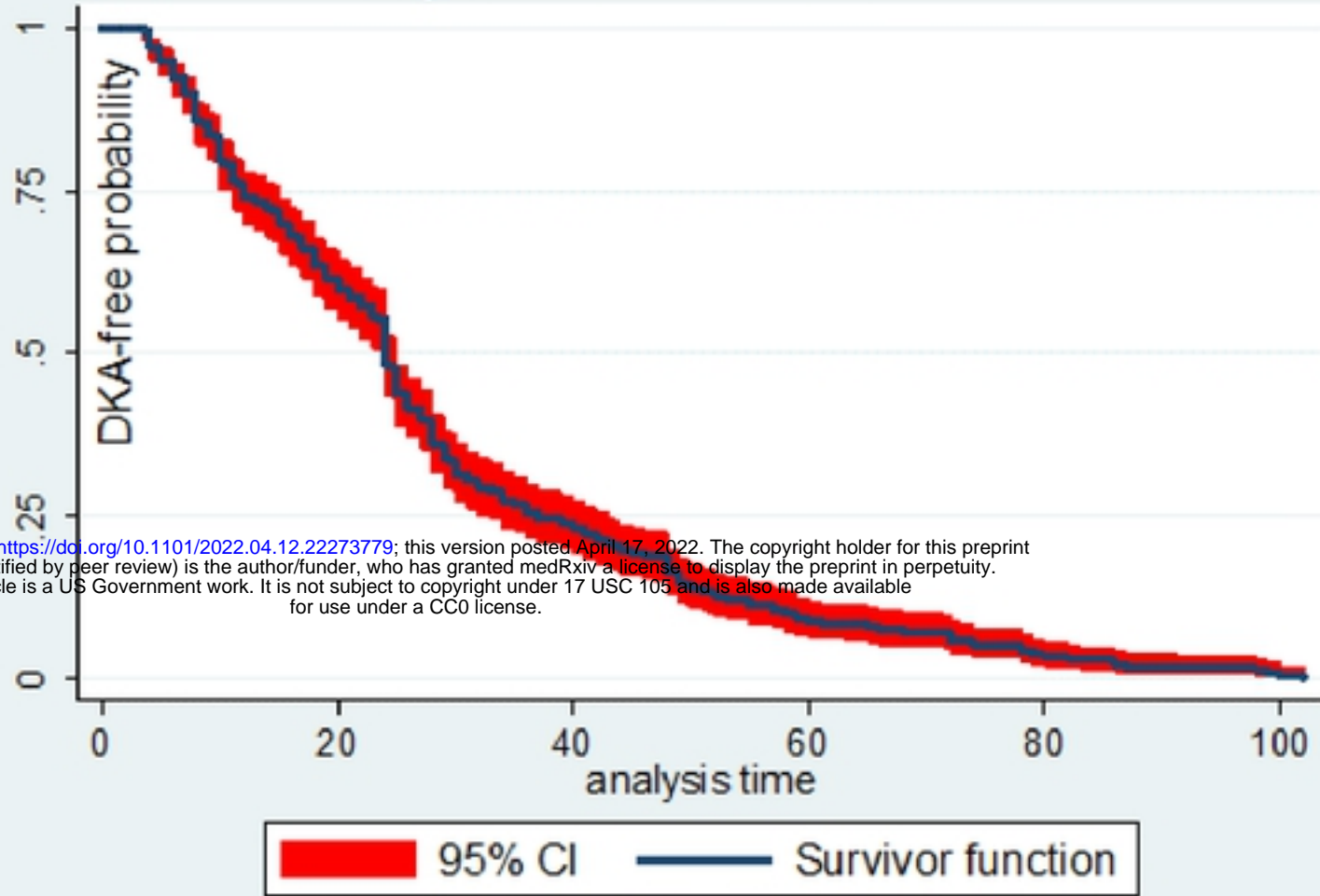


Figure 1: Overall Kaplan –Meier estimation of DKA free time functions of patients on adult DKA patients, DMRH, North West Ethiopia, January 1 2016 to January 1, 2021

# Kaplan-Meier survival estimate



medRxiv preprint doi: <https://doi.org/10.1101/2022.04.12.22273779>; this version posted April 17, 2022. The copyright holder for this preprint (which was not certified by peer review) is the author/funder, who has granted medRxiv a license to display the preprint in perpetuity. This article is a US Government work. It is not subject to copyright under 17 USC 105 and is also made available for use under a CC0 license.

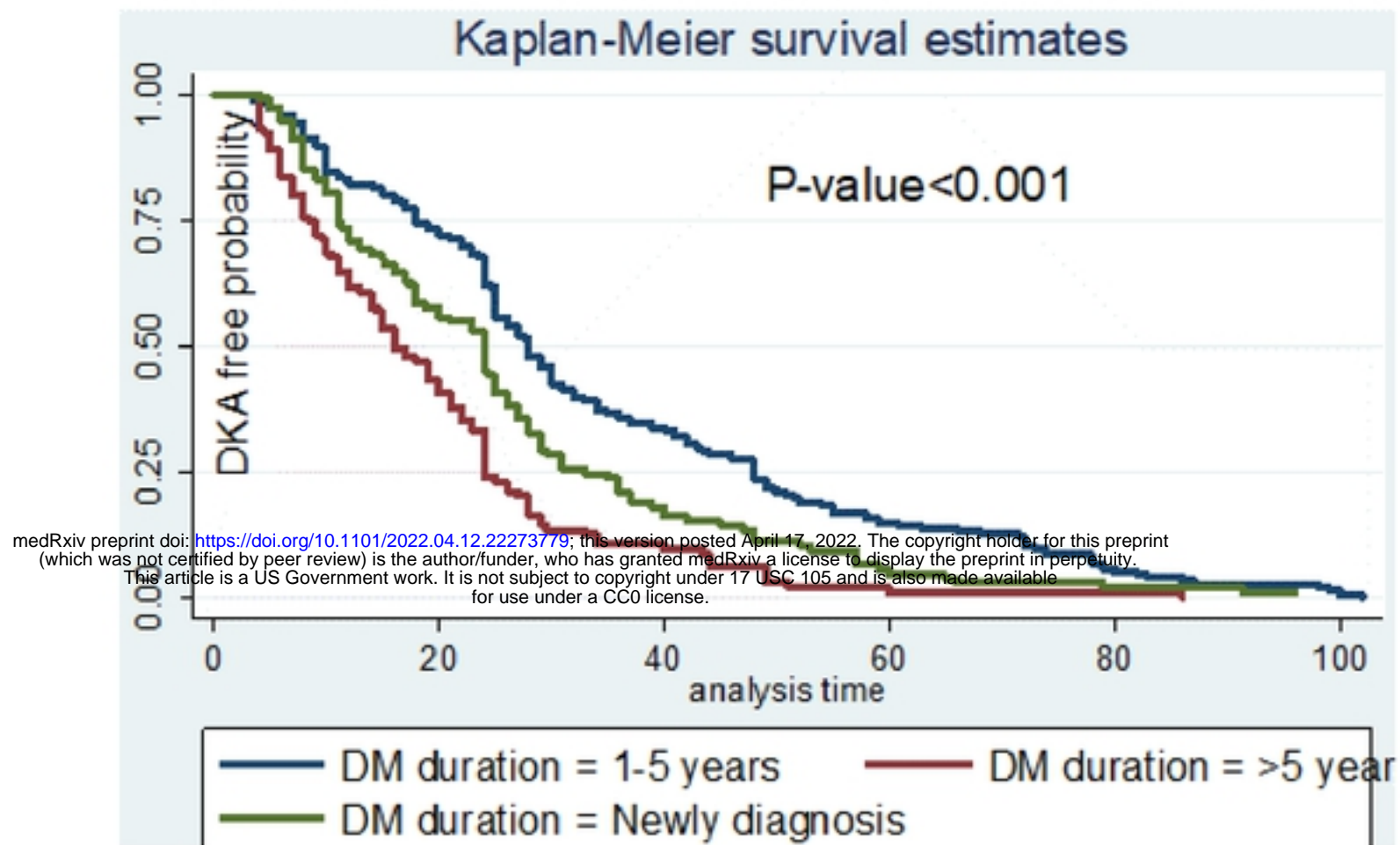


Figure 2: The Kaplan-Meier survival curves compare DKA free time of adult DKA patients between duration of DM, DMRH, North West Ethiopia, January 1 2016 to January 1 2021

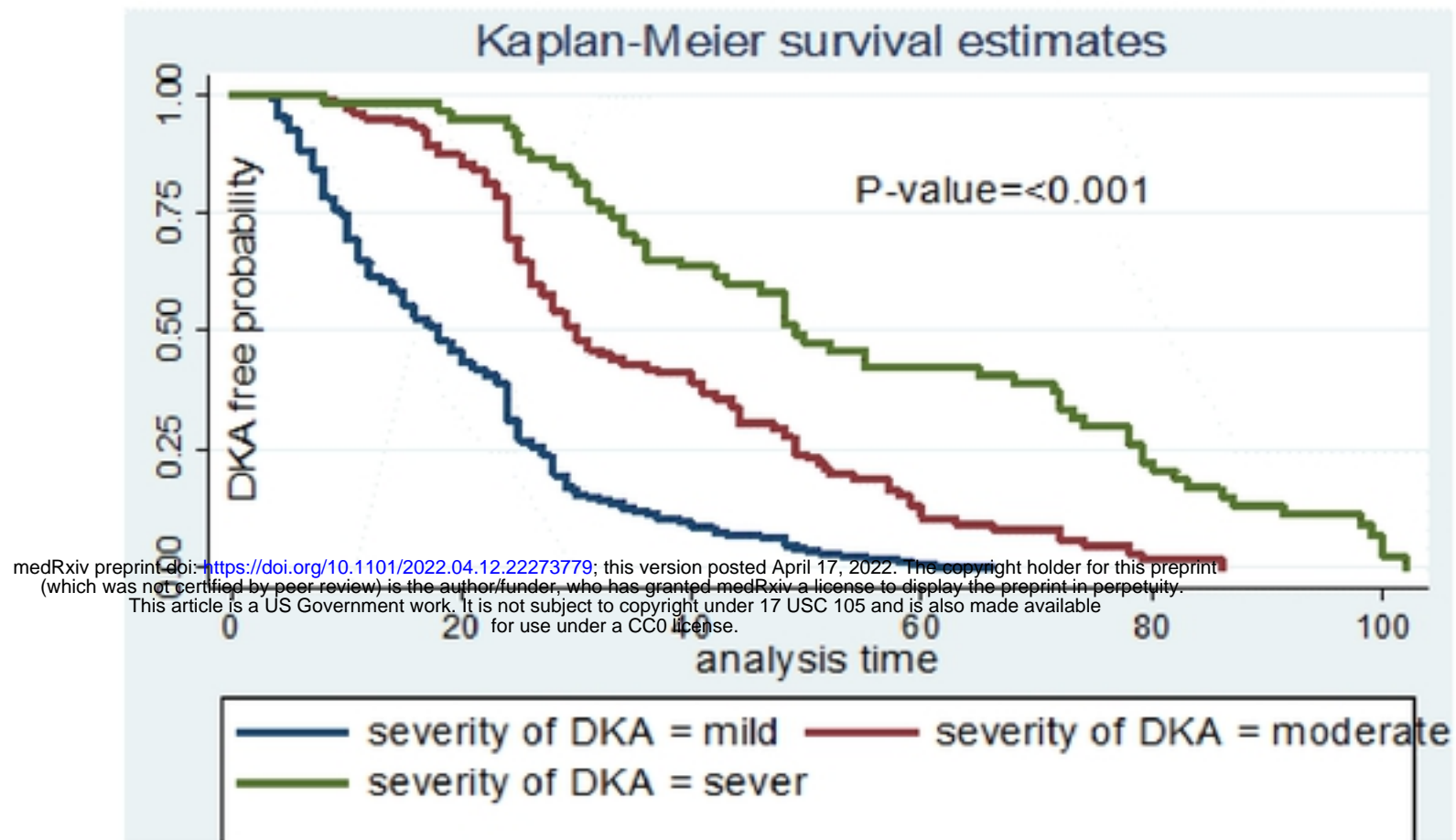


Figure 3: The Kaplan-Meier survival curves DKA free time of adult DKA patients between severity of DKA, DMRH, North West Ethiopia, January 1 2016 to January 1, 2021

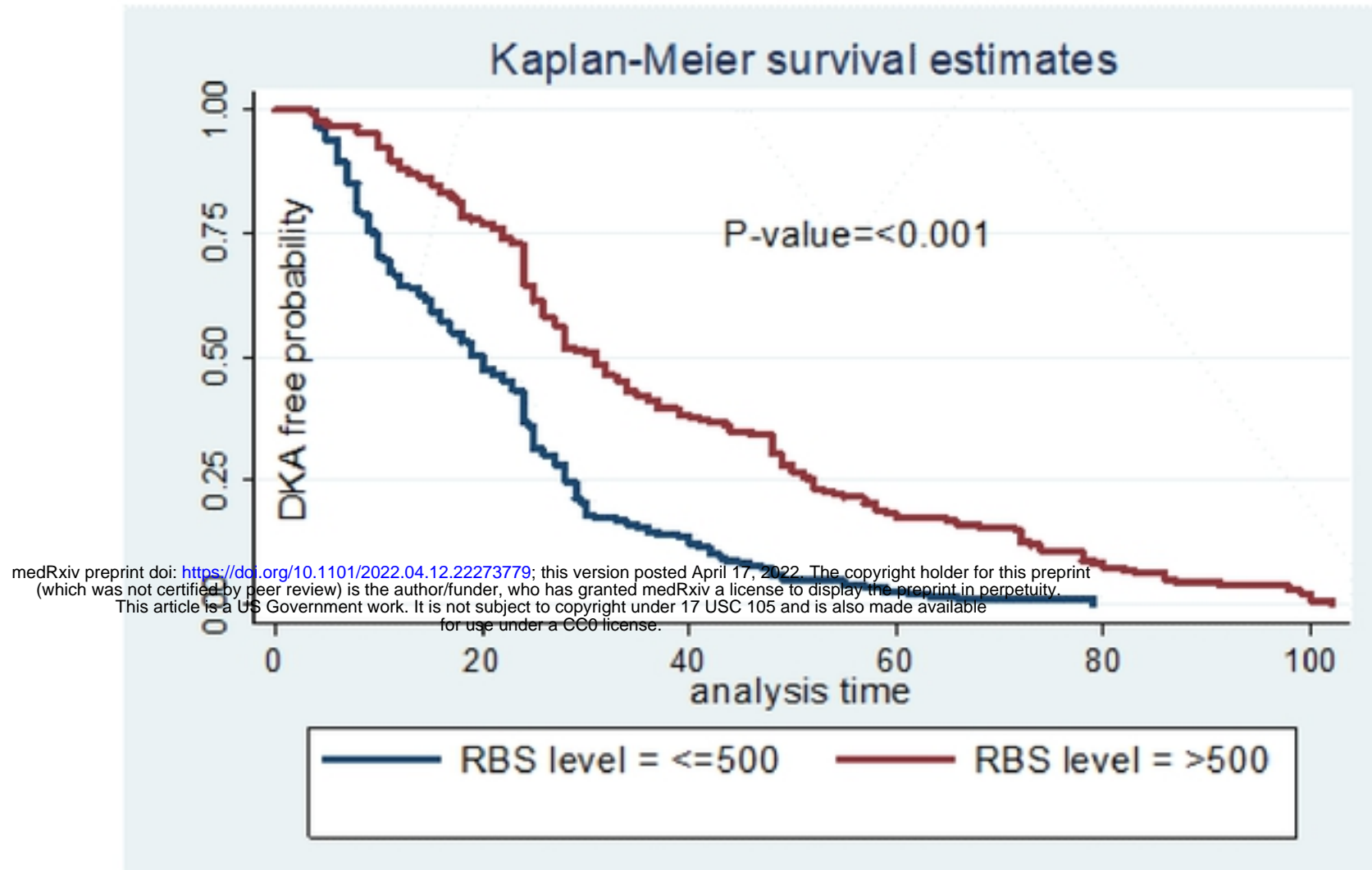


Figure 4: The Kaplan-Meier survival curves compare DKA free time of adult DKA patients between RBS level, DMRH, North West Ethiopia, January 1 2016 to January 1, 2021

medRxiv preprint doi: <https://doi.org/10.1101/2022.04.12.22273779>; this version posted April 17, 2022. The copyright holder for this preprint (which was not certified by peer review) is the author/funder, who has granted medRxiv a license to display the preprint in perpetuity. This article is a US Government work. It is not subject to copyright under 17 USC 105 and is also made available for use under a CC0 license.

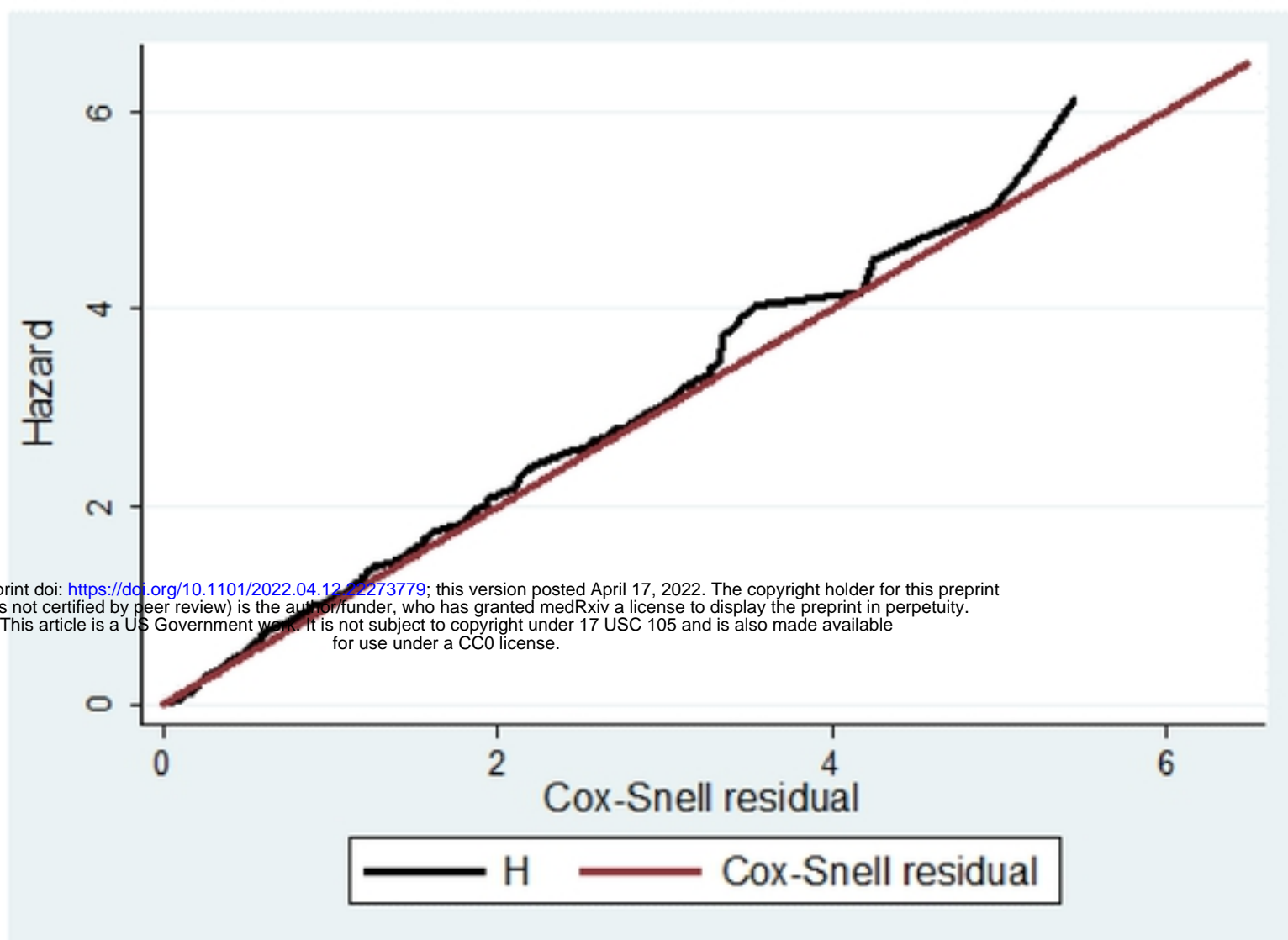


Figure 5: Cox Snell residual test showing overall goodness of fit of the Cox proportional hazards model.