

# Projected health impact of post-discharge malaria chemoprevention among children with severe malarial anaemia in Africa

Lucy C Okell,<sup>1\*</sup> Titus K. Kwambai,<sup>2,3</sup> Aggrey Dhabangi<sup>4</sup>, Carole Khairallah<sup>3</sup>, Thandile Nkosi-Gondwe<sup>5,6</sup>, Robert Opoka<sup>4</sup>, Andria Mousa,<sup>1</sup> Melf-Jakob Kühl<sup>7</sup>, Tim C. D. Lucas<sup>8</sup>, Richard Idro<sup>4</sup>, Daniel J. Weiss<sup>9,10</sup>, Matthew Cairns<sup>11</sup>, Feiko O ter Kuile<sup>3</sup>, Kamija Phiri<sup>5,6</sup>, Bjarne Robberstad<sup>7</sup>, Amani Thomas Mori<sup>\*7,12</sup>

1. MRC Centre for Global Infectious Disease Analysis, Department of Infectious Disease Epidemiology, Imperial College, London W2 1PG, UK.
2. Centre for Global Health Research (CGHR), Kenya Medical Research Institute (KEMRI), Kisumu, Kenya
3. Department of Clinical Sciences, Liverpool School of Tropical Medicine (LSTM), Liverpool, United Kingdom
4. College of Health Sciences, Makerere University, Kampala, Uganda.
5. Kamuzu University of Health Sciences, Blantyre, Malawi
6. Training and Research Unit of Excellence, Blantyre, Malawi
7. Section for Ethics and Health Economics, Department of Global Public Health and Primary Care, University of Bergen, P.O. Box 7804, 5020 Bergen, Norway
8. Big Data Institute, University of Oxford, Oxford, UK
9. Malaria Atlas Project, Telethon Kids Institute, Perth Children's Hospital, 15 Hospital Avenue, Nedlands, Australia.
10. Curtin University, Bentley, Australia
11. International Statistics and Epidemiology Group, London School of Hygiene and Tropical Medicine, London, UK.
12. Chr. Michelsen Institute P.O. Box 6033, N-5892 Bergen, Norway.

\*Contributed equally, corresponding authors

Lucy Okell, MRC Centre for Global Infectious Disease Analysis, Department of Infectious Disease Epidemiology, Imperial College London, UK. Email: l.okell@imperial.ac.uk

Amani Thomas Mori, Section for Ethics and Health Economics, Department of Global Public Health and Primary Care, University of Bergen, P.O. Box 7804, 5020 Bergen, Norway. E-mail: pax\_amani@yahoo.com

## Abstract

Children recovering from severe malarial anaemia (SMA) remain at high risk of readmission and death after discharge from hospital. However, a recent trial found that post-discharge malaria chemoprevention (PDMC) reduces this risk. We developed a mathematical model describing the daily incidence of uncomplicated and severe malaria requiring readmission among 0-5 year-old children after hospitalised SMA. We fitted the model to a multicentre clinical PDMC trial using Bayesian methods. We then modelled the potential impact of PDMC across malaria-endemic African countries. In the 19 highest-burden countries, we estimate that only 2-5 children need to be given PDMC to prevent one hospitalised malaria episode, and less than 100 to prevent one death. If all hospitalised SMA cases access PDMC, 37,000 (range 16,000-84,000) malaria-associated readmissions could be prevented annually, depending on access to hospital care. We estimate that recurrent SMA post-discharge constitutes 18-29% of all SMA episodes in higher transmission settings.

## Introduction

Severe malarial anaemia (SMA) still contributes substantially to childhood mortality and morbidity in malaria-endemic countries in Africa. *P. falciparum* malaria causes anaemia by triggering severe haemolysis of erythrocytes and suppression of erythropoiesis.<sup>1</sup> In highly endemic areas, around one-third of all hospitalised children may be severely anaemic ( $Hb < 5g/dL$ )<sup>2,3</sup> and severe anaemia may contribute to around half of all malaria-attributed deaths.<sup>4</sup> While malaria transmission has declined in many countries in the past two decades, highly endemic conditions persist in parts of sub-Saharan Africa. 70% of global malaria deaths occurred in just ten countries in Africa in 2020.<sup>5</sup> These countries are now the focus of the WHO High Burden to High Impact (HBHI) initiative, aimed at accelerating progress in malaria control in the hardest-hit areas.<sup>5</sup>

Between 0.4 and 13% of children with severe anaemia in low and lower-middle-income countries die during the acute hospitalisation phase, but those who survive also remain at high risk of readmission and death following hospital discharge despite having received appropriate care.<sup>6</sup> A recent meta-analysis found that the odds of death among previously severely anaemic children during the first six months after discharge is 72% higher than during hospitalisation and over two times higher than for those admitted with other conditions without severe anaemia.<sup>7</sup> Full haematological recovery following treatment of severe anaemia is thought to take around six weeks, and any malaria infections during this period substantially increase the risk of recurrent severe anaemia or death.<sup>8,9</sup> However, no specific interventions have been widely implemented to tackle this large post-discharge burden of morbidity and mortality among SMA patients.

Post-discharge malaria chemoprevention (PDMC) is the provision of full treatment courses of long-acting antimalarials administered at pre-determined time intervals after discharge from hospital among children recently admitted with severe anaemia. Two randomised clinical trials have shown that PDMC can reduce the high post-discharge malaria morbidity and mortality. In Malawi, three months of PDMC with monthly artemether-lumefantrine achieved a protective efficacy of 41% against the risk of death or all-cause readmission and 49% against clinical malaria in the first 3 months post discharge.<sup>10</sup> More recently, a multicentre trial in moderate-to-high transmission areas of Uganda and Kenya showed that three months of PDMC with the longer-acting drug dihydroartemisinin-piperaquine (DP) reduces the risk of deaths or all-cause readmissions by 70% and hospitalised malaria episodes by 87% during the same period.<sup>11</sup>

There is now a need to understand the potential epidemiological impact of PDMC in settings with different malaria transmission intensities to inform decisions in endemic countries about implementing PDMC, to support economic evaluation of the intervention, and to plan how PDMC could contribute to initiatives such as the HBHI programme. In this study we first develop a deterministic model to characterise the natural history of post-discharge malarial disease according to transmission intensity. We incorporate drug protection from PDMC into the model based on previous pharmacodynamic analysis and parameterise the model by fitting to data from a multicentre trial of PDMC. Next, we embed the post-discharge disease model within

a population-wide model of severe malarial illness to understand the contribution of post-discharge malaria morbidity to the total disease burden, the potential demand for PDMC and its public health impact in malaria-endemic countries of Africa, taking into account different transmission intensities and access to health care.

## Results

### Malaria outcomes and impact of PDMC during 6 months post-discharge

Our analysis was informed by data from a previous trial of PDMC conducted between 2016-2018 in nine hospitals in areas with moderate-to-intense perennial malaria transmission in Kenya and Uganda, described in detail elsewhere.<sup>11</sup> In brief, 1,049 children under five years of age who had been hospitalised for severe anaemia were randomised to receive either a three-day course of dihydroartemisinin-piperaquine (DP) or placebo at weeks two, six, and ten after discharge from the hospital (i.e. 3 x 3 full DP courses = 9 DP doses for each child in total). All children had received the standard in-hospital treatment for severe anaemia including blood transfusion. 85% had malaria parasites and had been given parenteral artesunate. They then received a 3-day course of artemether-lumefantrine (AL) at the time of discharge. Multiple health outcomes were assessed over the next 6 months. PDMC caused a reduction in malaria outcomes, but not readmissions and out-patient hospital visits for other conditions. We therefore focus our analysis on incidence of malaria post-discharge, which was measured by passive follow-up in study clinics. Malaria cases were hospitalised again during follow-up if they required parenteral treatment, or if they had severe anaemia.

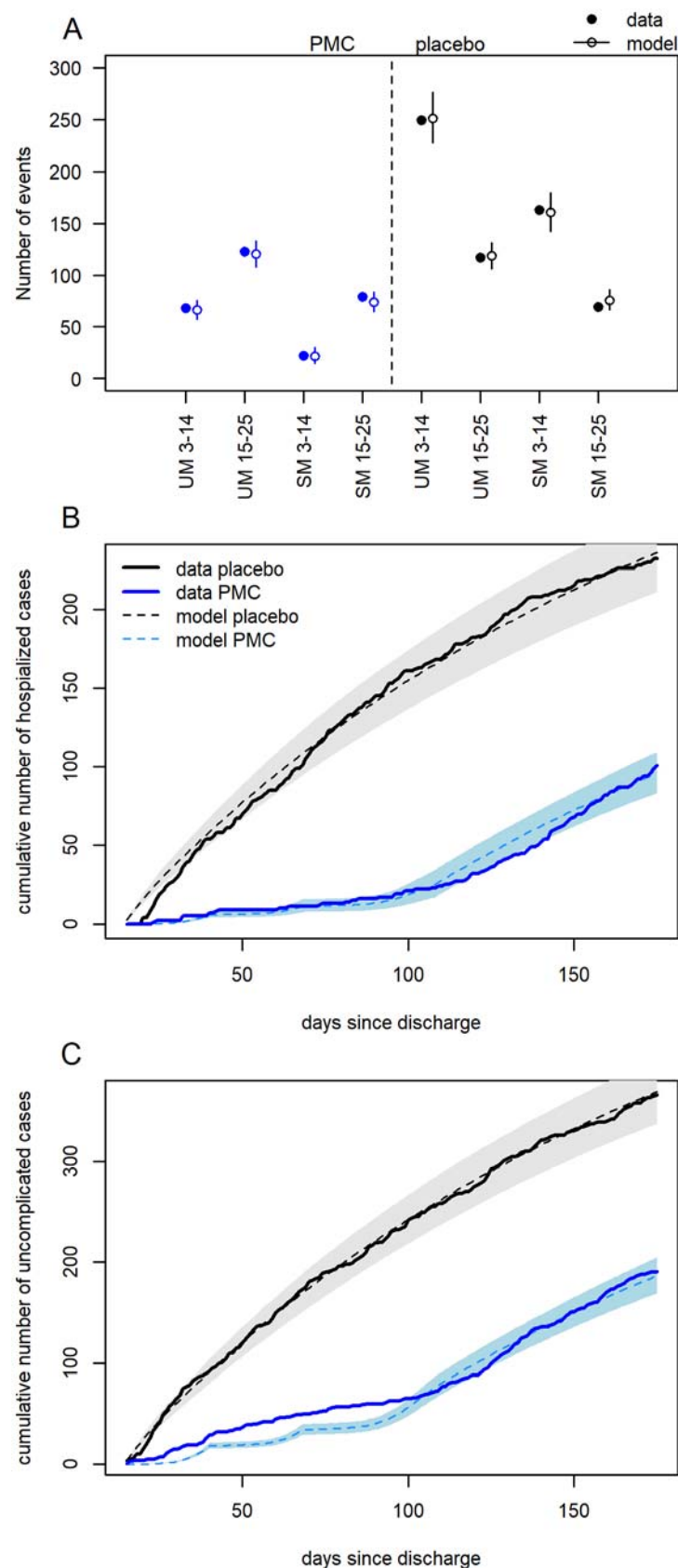
We developed a cohort model describing the daily incidence of uncomplicated and hospitalised malaria in the children after initial hospital discharge. We allowed incidence to depend on the entomological inoculation rate (EIR; infectious bites per person per year), the time since discharge, the rate of antimalarial treatment for symptomatic malaria episodes (allowing for post-treatment prophylaxis), and receipt of DP for PDMC. DP prophylaxis is modelled as a probability of prevention of reinfection that declines over time since treatment, with a mean of 28 days (Figure S1).<sup>12</sup> We also allowed that if children develop symptomatic malaria during DP prophylaxis, the drug might reduce the severity of illness (as indicated by the probability of hospitalisation). All PDMC doses in the trial except the first were administered at home and we

allowed for imperfect adherence (Table S1). A total of 333 hospitalised and 557 uncomplicated malaria episodes were recorded during the 6 months post discharge. The model was fitted to individual patient records using Bayesian methods, allowing for loss to follow-up rates observed in the data. We used semi-informative prior values for the EIR in each hospital site based on Malaria Atlas Project maps.<sup>13</sup>

The model was able to accurately capture the total number of observed uncomplicated and hospitalised malaria events in both the post-discharge cohort placebo and PDMC trial arms (Figure 1). The modelled protective efficacy of PDMC was 86% against hospitalised malaria and 74% against uncomplicated malaria during 3-14 weeks post-discharge. This was close to the trial estimates of 87% and 69% for hospitalized and uncomplicated malaria, respectively. The differential efficacy against the two outcomes is due to PDMC reducing the severity of malaria illness, such that the percentage of symptomatic malaria cases that required hospitalisation was 25% (95% credible interval (CI) 17-34%) among children who had recently taken PDMC, compared to 39% (95% CI 36-42%; Table S1) among children with no recent PDMC. The model was also able to capture the change in daily incidence rates over time since discharge from hospital (Figures 1B & 1C). The risk of uncomplicated and hospitalised malaria per infectious bite in the placebo group declined by approximately 50% between the beginning and the end of follow-up (Figures 1A and S4). The incidence of uncomplicated and hospitalised malaria increased with EIR, but the risk of these outcomes per infectious bite decreased (Figures 2 & S5), similar to relationships previously observed in the general population.<sup>14,15</sup> Three previous post-discharge studies which were not used during model fitting<sup>10,16,17</sup> showed a similar or slightly lower incidence of post-discharge hospitalised malaria than predicted by our model, given the estimated local EIR (Figure 2B).

The incidence of hospitalised malaria was strikingly high in the post-discharge placebo group compared to the average in the general population of the same age estimated in other studies<sup>18,19</sup> (Figure 2B), being 39-63 times higher during post-discharge weeks 3-14 in settings with EIR>10, and still 25-40 fold higher in weeks 15-25. This high incidence suggests persistent vulnerability of these children beyond the end of the PDMC intervention at week 14. The incidence of uncomplicated malaria was 1.3-2.6 times higher than expected in the general population of the same age in weeks 3-14. The total incidence of symptomatic malaria episodes

(both uncomplicated and hospitalised) was more than the expected incidence of infectious bites in 0-5 year olds in four trial sites, suggestive of higher than average exposure to mosquitoes (Figure S6).



# Figure 1: Model fits to trial data.

Comparison of the number of malaria cases from the trial and model predictions across all sites. (A) Uncomplicated (UM) and hospitalised malaria (SM) in weeks 3-14 and 15-25 post discharge in PDMC (left, blue) and placebo (right, black) trial arms. Error bars show 95% credible intervals (CI) of model predictions (B) Cumulative daily number of hospitalised malaria cases by time since discharge after the original SMA episode in placebo (black) and PDMC (blue) trial arms; solid line=data, dashed line and shaded area=model fit and 95% CI. (C) As B, for uncomplicated malaria cases.



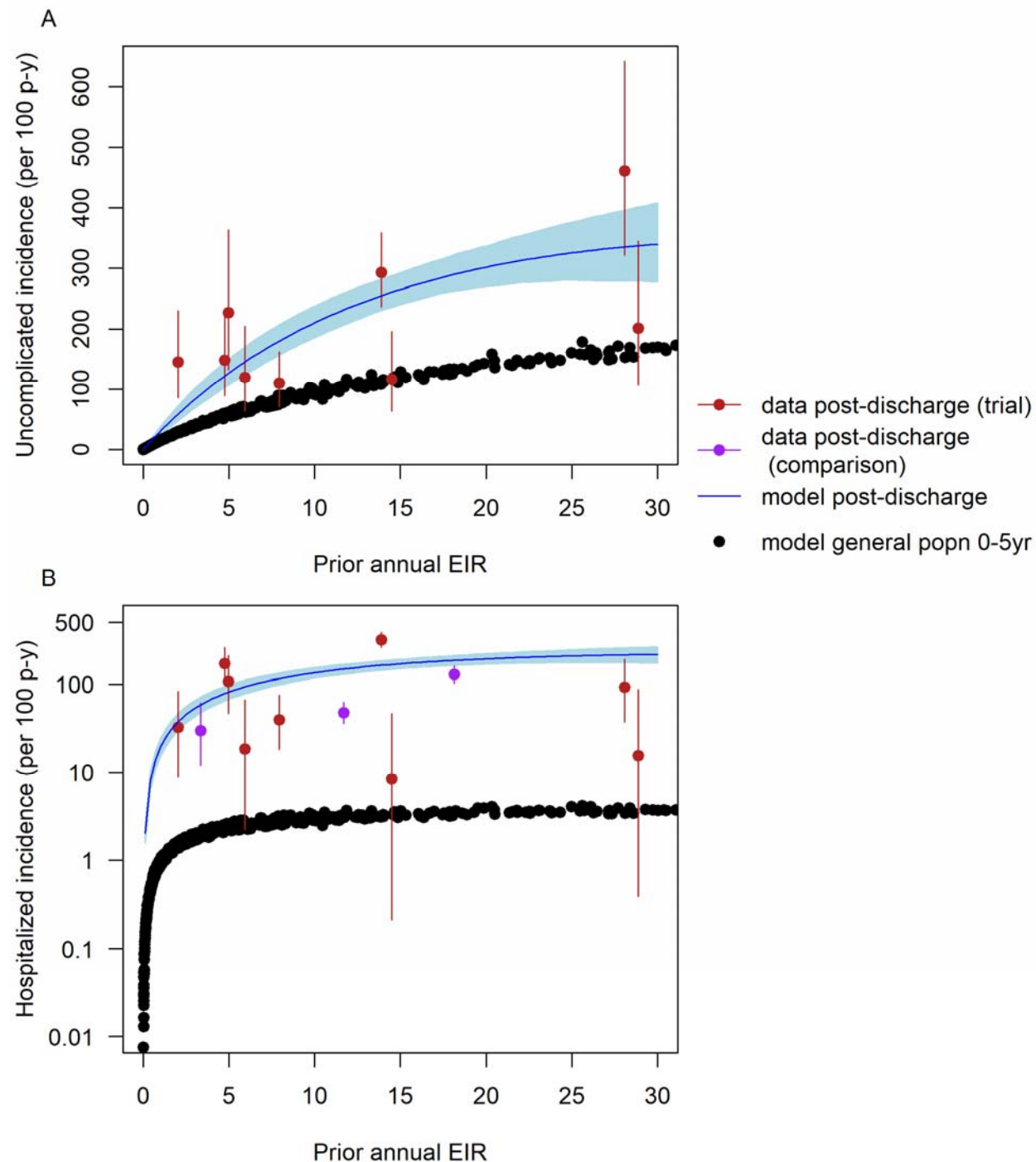


Figure 2 (A) Relationship between prior estimated EIR values and incidence of uncomplicated malaria per 100 person-years in 0–5-year-olds 3–14 weeks after hospital discharge following severe malarial anaemia. The data are from the 9 trial locations in Uganda and Kenya (red; data post-discharge (trial) = data from Kwambai *et al.*<sup>11</sup>). The fitted model is in blue (shaded area = 95% CI). For comparison, the estimated incidence of uncomplicated malaria by EIR in the general population of under five-year-olds is

shown in black. (B) As (A) showing hospitalised malaria episodes in the same trial group (log scale). For comparison, the estimated incidence of hospitalised malaria in the general population of children aged 0-5 years for a given annual EIR is shown in black. Three additional validation data points are shown from separate post-discharge studies (purple; Uganda: Opoka *et al.*<sup>16,17</sup> and Malawi: Phiri *et al.*<sup>10</sup>) which were not used for fitting the model.

## Impact of PDMC across sub-Saharan Africa and burden of recurrent SMA

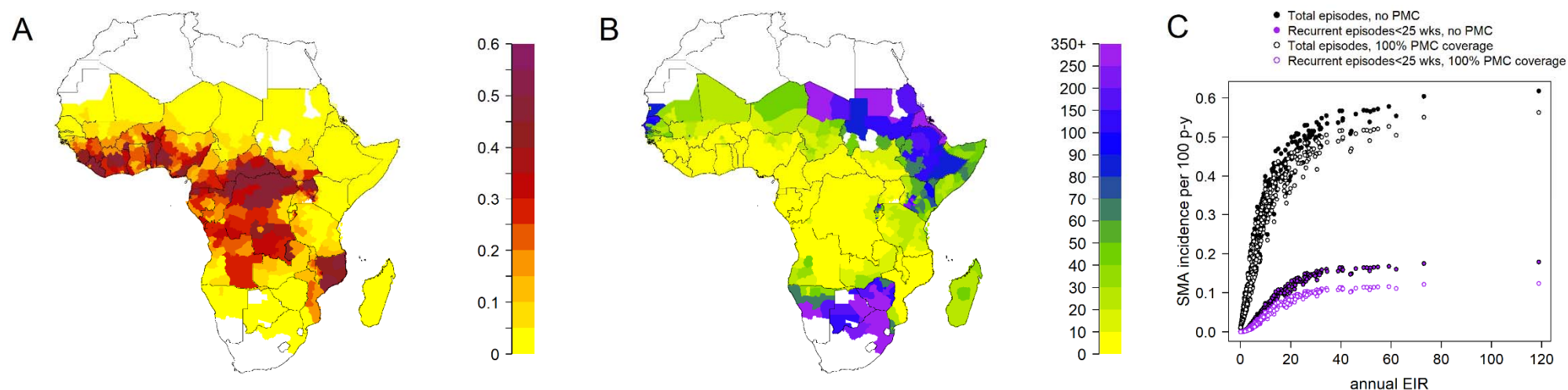
To predict PDMC demand and impact in different settings, we extended the modelling framework to describe severe malarial anaemia (SMA) in the total general population of under-five year olds and embedded our post-discharge cohort model within this (Methods & Supplementary Appendix). We allowed for SMA cases in the community who do not access treatment in hospital, as well as lower treatment coverage for uncomplicated malaria and lower adherence to PDMC under routine healthcare outside the trial setting. As a model input, we generated estimates of the total incidence of hospitalised SMA in 0-5 year olds for each sub-national region (first administrative unit) of endemic countries in Africa based on a recently published analysis correlating hospital SMA cases with local malaria infection prevalence (Figure S2).<sup>20,21</sup> We used the Malaria Atlas Project estimates of infection prevalence for each region in 2019.<sup>22</sup> We also generated estimated annual EIR and incidence of total hospitalised malaria (SMA and other types) for each region using the Imperial College malaria transmission model.<sup>19</sup> We used the model to calculate the proportion of all hospitalised SMA episodes which are recurrent (within 6 months of a previous SMA episode), and the potential impact of PDMC upon these.

We predict the impact of PDMC will be greatest in countries with higher transmission intensities, where up to 0.49 malaria-associated readmissions could be prevented per child given PDMC (Figure 3A, Table 1). In just over half of the malaria-endemic countries in Africa, we estimate that less than 10 children need to be given PDMC to prevent one hospitalised malaria episode (Figure 3B). In the two highest burden countries, Nigeria and the Democratic Republic of the Congo (DRC),<sup>5</sup> only 3.0 and 2.8 children need to be given PDMC to prevent a hospitalised episode, respectively (Table 1). The adherence to the three full doses of PDMC drugs was lower in an implementation study of PDMC within routine clinical practice compared to the near-

perfect adherence observed in clinical trials (Table S2).<sup>23</sup> This lower adherence is estimated to reduce protective efficacy against hospitalised malaria during weeks 3-14 from 86% to 75%, resulting in an overall protective efficacy over the 6 months of 53% (as opposed to 62% with perfect adherence). This relatively high overall efficacy results from PDMC taking effect in the earlier post-discharge period when malaria risk is highest.

Predictions of total malaria readmissions and deaths averted by PDMC are sensitive to assumptions about the proportion of malaria cases who access hospital care when required, and the case fatality rate outside hospital settings. The probability of malaria patients accessing hospital care is challenging to estimate and varies between settings. The following results assume a base scenario where 50% of malaria cases requiring hospitalisation actually access it, and a range is obtained from assuming 30-70% access based on community studies of severe disease.<sup>24</sup> For hospitalised SMA and non-SMA malaria episodes, case fatality rates of 7.4% and 1.0% were assumed, respectively.<sup>25-27</sup> The case fatality among the non-SMA hospitalised cases is lower because we allow that not all admitted patients meet the strict WHO criteria for severe malaria,<sup>28</sup> which would have a higher case fatality rate. We assumed the case fatality rate of malaria cases unable to access hospital would be doubled based on a previous analysis by Camponovo *et al.*<sup>27</sup>

If all hospitalised children aged 0-5 years with SMA were given PDMC, we estimate that a total of ~37,000 (range 16,000-84,000) malaria-associated readmissions could be prevented per year across all modelled malaria-endemic countries, and 2,071 deaths prevented per year (range 1,027-4102). Three-quarters of these prevented readmissions and deaths are in the ten countries that are the focus of the WHO High Burden High Impact programme.<sup>5</sup> In 23 countries (range 18-24 countries), we estimate that less than 100 children need to be given PDMC to prevent one death. In Nigeria and the DRC, 54 (range 47-62) and 50 (range 44-57) children need to be given PDMC to prevent one death, respectively.



**Figure 3.** Impact of PDMC.

(A) Average number of malaria episodes requiring hospitalisation which are averted per child aged 0-5 years given PDMC during the 6 months post-discharge period. (B) Number needed to treat with PDMC to avert 1 malaria episode requiring hospitalisation. All estimates are shown for subnational (administrative area 1) regions and incorporate imperfect adherence to the three prescribed courses of PDMC as observed in ref <sup>23</sup>. The assumption in these results is that 50% of cases requiring hospitalisation access hospital care, but there is negligible change in these outputs when this percentage is varied. (C) Total and recurrent SMA episodes with and without PDMC (including cases who do not access hospital care as well as those who do). Model estimates are shown in the absence (solid circles) and presence (open circles) of PDMC. Recurrent episodes are those occurring within 6 months of a previous SMA episode. PDMC is given at 100% coverage to hospitalised cases only and impact largely occurs in the first 3 months post-discharge. We allowed for imperfect adherence to PDMC. We assumed that 50% of individuals with SMA reach hospital and varied this for sensitivity analysis (Figure S8). Assuming a lower proportion hospitalised results in larger total estimates of SMA burden in the absence of PDMC, and smaller total impact of PDMC.

We estimate that in the absence of PDMC the burden of recurrent SMA episodes within 6 months of the original episode is 18-29% of the total SMA cases in <5-year-old children in higher transmission settings with EIR>10 (equivalent to slide prevalence in 2–10-year-olds > 25%; Figure 3C), and a lower proportion in lower transmission settings. Weighting by population size, this results in PDMC preventing 5-9% of all SMA in under-fives when EIR>10 in the base scenario where 50% are hospitalised, ranging from 3-12% under different access to hospital (Figure S8).

### **PDMC demand forecast**

We estimate there are 131,000 (range 56,000-305,000) children under five years old per year who are hospitalised with SMA and survive, across all malaria-endemic countries in Africa (Table 1; Figure S9). The highest number of children eligible for PDMC would be in Nigeria with 40,000 per year (range 17,000-94,000). In total, the ten high-burden to high-impact countries in Africa identified by WHO<sup>5</sup> would require PDMC for 87,000 children per year (range 38,000-200,000). Some countries not on this top-10 list also have high PDMC requirements, such as Côte d'Ivoire (Table 1).

**Table 1:** Estimated PDMC impact and demand in sub-Saharan African countries. The ten high burden countries targeted by the WHO High Burden to High Impact strategy are shown first. Estimates assume 100% PDMC coverage and the lower adherence level observed in implementation studies.

Country	Population aged under five years	Incidence of hospitalised severe malarial anaemia per 100 person years in 0-5-year-olds without PDMC (range*)	Average number of hospitalised malaria episodes prevented per 100 children given PDMC	Number of children needed to treat with PDMC to prevent one hospitalised malaria episode <sup>†</sup>	Number of children needed to treat with PDMC to prevent one malaria death (range) <sup>†</sup>	Annual PDMC demand (range)
<b>HIGH BURDEN TO HIGH IMPACT COUNTRIES</b>						
Burkina Faso	3,295,991	0.14 (0.10-0.23)	23.6	4.2	75 (66-87)	2,217 (945 - 5,188)
Cameroon	4,237,636	0.21 (0.15-0.35)	18.4	5.4	96 (85-111)	4,345 (1,854 - 10,162)
Democratic Republic of the Congo	14,114,883	0.33 (0.24-0.53)	35.8	2.8	50 (44-57)	22,880 (9,731 - 53,770)
Ghana	4,775,926	0.19 (0.13-0.31)	21.2	4.7	84 (74-97)	4,304 (1,836 - 10,071)
Mali	3,215,976	0.08 (0.06-0.13)	9.2	10.8	192 (169-220)	1,231 (526 - 2,846)
Mozambique	4,981,850	0.26 (0.19-0.43)	39	2.6	45 (40-53)	6,517 (2,770 - 15,305)
Niger	3,649,415	0.12 (0.09-0.20)	18.6	5.4	95 (84-110)	2,099 (896 - 4,911)
Nigeria	33,110,061	0.25 (0.18-0.40)	33.1	3	54 (47-62)	40,150 (17,086 - 94,248)
Tanzania	9,630,285	0.04 (0.03-0.07)	7.8	12.8	228 (201-260)	1,968 (842 - 4,466)
Uganda	7,112,378	0.20 (0.15-0.33)	32.7	3.1	54 (48-63)	7,124 (3,032 - 16,728)

OTHER MALARIA- ENDEMIC COUNTRIES						
Angola	4,373,828	0.15 (0.11-0.24)	21.4	4.7	83 (73-96)	3,138 (1,339 - 7,319)
Benin	1,934,664	0.39 (0.28-0.64)	38.5	2.6	46 (41-53)	3,763 (1,600 - 8,852)
Botswana	288,586	0.01 (0.01-0.01)	0.4	239.4	4249 (3973-4861)	11 (5 - 16)
Burundi	2,039,788	0.11 (0.08-0.18)	17	5.9	104 (92-120)	1,046 (447 - 2,431)
Central African Republic	880,851	0.36 (0.26-0.59)	40.8	2.5	44 (38-50)	1,595 (678 - 3,753)
Chad	2,552,929	0.06 (0.05-0.10)	5.6	17.7	314 (277-361)	753 (322 - 1,735)
Comoros	123,614	0.03 (0.02-0.04)	2.7	37.2	659 (542-730)	15 (6 - 31)
Cote d'Ivoire	4,094,415	0.35 (0.25-0.56)	35.6	2.8	50 (44-58)	7,012 (2,982 - 16,480)
Djibouti	151,672	0.01 (0.01-0.02)	0.3	307.6	5458 (5627-6476)	8 (4 - 15)
Equatorial Guinea	107,080	0.44 (0.33-0.72)	45.1	2.2	39 (35-46)	240 (102 - 566)
Eritrea	950,825	0.01 (0.01-0.01)	0.1	917.1	16273 (14299-16996)	47 (20 - 77)
Ethiopia	18,227,284	0.02 (0.01-0.03)	1	100	1775 (1564-2015)	1,520 (651 - 2,971)
Gabon	288,277	0.27 (0.2-0.45)	24.8	4	72 (63-83)	382 (163 - 897)
Gambia	332,684	0.02 (0.02-0.03)	2.3	43.8	776 (684-880)	35 (15 - 73)
Guinea	2,233,593	0.23 (0.17-0.38)	25.9	3.9	69 (60-79)	2,488 (1,060 - 5,836)
Guinea-Bissau	329,360	0.04 (0.03-0.07)	5.1	19.6	348 (303-400)	67 (29 - 150)
Kenya	8,328,699	0.07 (0.05-0.11)	21.8	4.6	82 (71-92)	2,794 (1,192 - 6,363)
Liberia	788,182	0.39 (0.29-0.64)	43.2	2.3	41 (36-47)	1,561 (663 - 3,674)
Madagascar	4,315,512	0.03 (0.02-0.05)	3.5	28.2	500 (441-573)	657 (281 - 1,426)
Malawi	3,123,362	0.12 (0.08-0.19)	18	5.6	99 (87-114)	1,741 (743 - 4,077)
Mauritania	686,348	0.06 (0.04-0.1)	4.8	21	372 (326-425)	201 (86 - 460)
Namibia	410,614	0.02 (0.02-0.04)	3	32.8	582 (509-635)	47 (20 - 98)
Republic of Congo	830,334	0.24 (0.17-0.39)	23.9	4.2	74 (65-86)	963 (411 - 2,259)
Rwanda	2,098,732	0.02 (0.01-0.03)	1.7	59.6	1057 (927-1207)	197 (84 - 395)
Senegal	2,623,405	0.02 (0.02-0.03)	1.8	54.2	961 (844-1071)	268 (115 - 539)
Sierra Leone	1,116,213	0.32 (0.23-0.52)	40.5	2.5	44 (39-51)	1,792 (761 - 4,214)
Somalia	1,915,090	0.04 (0.03-0.06)	3	33.7	598 (529-683)	341 (146 - 744)

South Africa	6,646,109	0.01 (0.01-0.01)	0.2	453.9	8054 (7119-9073)	313 (134 - 493)
South Sudan	2,260,515	0.17 (0.13-0.29)	20.6	4.9	86 (76-100)	1,893 (808 - 4,439)
Sudan	6,139,288	0.02 (0.01-0.02)	1.1	92.7	1646 (1455-1857)	471 (202 - 902)
Togo	1,309,796	0.23 (0.16-0.37)	23.3	4.3	76 (67-88)	1,442 (615 - 3,382)
Zambia	2,970,088	0.08 (0.06-0.13)	19.7	5.1	90 (79-104)	1,143 (488 - 2,653)
Zimbabwe	2,841,665	0.01 (0.01-0.02)	0.7	134.8	2392 (2124-2700)	191 (82 - 358)
<b>TOTAL</b>						<b>130,970 (55,772-305,373)</b>

\* range obtained from varying the proportion of cases hospitalised from 30-70%.

† Children are provided with full PDMC (3 courses of DP, each containing 3 doses) at discharge, but estimates allow for imperfect adherence in routine settings



## Discussion

Our model captures the high burden of repeat malaria episodes requiring hospitalisation within the first 6 months post-discharge among children recovering from an initial episode of SMA. We estimate that this risk is approximately 25-63 times higher than the average for children of the same age in the general population. These repeat episodes constitute an estimated 18-29% of all SMA episodes in high transmission settings. PDMC with monthly dihydroartemisinin-piperazine targets this high-risk group and effectively prevents malaria-associated hospital readmissions or death in trials.<sup>10,11</sup> We predict that this effect would be notable across most endemic settings in Africa with an effective routine implementation of the intervention.<sup>23</sup> PDMC would have the largest impact in the highest burden settings; e.g. in Nigeria and the DRC, where we estimate only 3 children need to be given PDMC to prevent a hospitalised malaria episode. However, even considering the full range of observed transmission levels, fewer than 10 children need to be given PDMC to prevent one hospitalised malaria episode in the majority of settings. This dynamic is partly driven by the ‘self-targeting’ nature of PDMC – that only high-risk children admitted to hospital will receive the treatment (unlike other forms of chemoprevention, which are administered to all healthy children in a particular age range). Our analysis also suggests PDMC will be highly cost-effective across a wide range of settings, given that the cost of inpatient malaria care in sub-Saharan Africa is \$15.64-\$137.87.<sup>29</sup> However, cost-effectiveness will depend on the local costs of clinical management and the organisation of health care services.

The risk of hospitalised malaria remained high over a prolonged period, with the incidence still being 25-40 times higher than the average for the general population of the same age in the period 4-6 months after the original SMA episode.. Earlier studies suggested that haematological recovery after severe anaemia requires around six weeks.<sup>9</sup> However, our findings suggest that recently discharged children remain at higher risk than the general population well beyond this period. Since the PDMC intervention effect is largely restricted to the first 14 weeks, providing longer protection may have significant health impacts. Future studies should assess the benefit of augmenting PDMC with additional prevention strategies against malaria such as longer courses of chemoprevention, malaria vaccines, or monoclonal antibodies that provide at least six months of protection. Caregivers in the PDMC trials were encouraged to use insecticide-treated nets for

their children, but the provision of a new effective insecticide-treated net might have higher impact. Older children with SMA also have notable post-discharge morbidity,<sup>7</sup> therefore increasing the eligible age range might also increase total impact.

Our results on the number of cases averted per child given PDMC and the number needed to treat to avert adverse outcomes were derived from clinical trial results and are relatively robust to model assumptions. However, the total demand for PDMC and the total number of cases and deaths that could be prevented are uncertain, given that PDMC is a hospital-based intervention and there is a lack of data on the probability of accessing hospital care. Access to hospitals is likely to vary greatly between and within countries.<sup>27</sup> A recent study tracking children with suspected severe malaria in the community in Uganda, Nigeria, and DRC found that only 41-65% go on to access hospital care.<sup>24</sup> Care seeking for repeat episodes of malaria after hospital discharge during the trial was probably better than in routine clinical practice because participants were financially remunerated for their travel expenses and may have had greater awareness of malaria danger signs. Although PDMC will produce a lower total impact where many children with SMA do not access hospital care, we find that the benefit per child given PDMC is greater in areas where children are less likely to return to the hospital for subsequent episodes, due to the high burden of repeat severe malaria and its high case fatality rate in the absence of hospital care. Preventing repeat episodes is also important given that poor households can incur catastrophic health expenditure for severe malaria.<sup>30</sup>

Our finding that around 18-29% of hospitalised SMA episodes would occur within 6 months of the original episode is plausible considering previous hospital-based studies of children with severe anaemia. In Uganda, 75% of children with severe anaemia had been hospitalised within the previous 6 months for SMA.<sup>31</sup> In the PDMC trial in Kenya and Uganda, 35% of children had been hospitalised previously for severe disease of any cause.<sup>11</sup> We found that children with SMA are probably exposed to infectious mosquito bites more frequently than the average child, because the incidence of symptomatic malaria post-discharge was higher than the expected incidence of infectious bites in this age group in some settings (Figure S6). The probability of developing infection and symptoms per infectious bite is also higher than in other children.<sup>32</sup> The

group who develop SMA may have particular frailty to malaria for genetic or biological reasons.<sup>33</sup> or other reasons that future studies may attempt to investigate.

Our model was able to replicate the observed total number of hospitalised and uncomplicated malaria episodes in the post-discharge trials. We estimated a relationship between EIR and both outcomes, although there was considerable variation around this in the data. There is uncertainty in the EIR values, which are based on predicted prevalence estimates from a geospatial model.<sup>13</sup> Uncertainty in the incidence of post-discharge episodes also arises from small sample sizes in some trial hospitals, as well as some misclassification of uncomplicated malaria. One outlier was Kamuli mission hospital in Uganda, which was predicted to have a high EIR yet showed a relatively low incidence of post-discharge hospitalised malaria. This hospital is a private not-for-profit facility, where admitted patients usually incur relatively higher out-of-pocket payments than patients at public hospitals. Trial personnel reported that some malaria cases that would otherwise have been hospitalised were treated as out-patient cases with injectable artesunate to avoid hospital costs and were therefore classified as uncomplicated malaria cases (personal communication, author A. Dhabangi).

In summary, our findings support the widespread implementation of PDMC in malaria-endemic countries in Africa, particularly high-burden countries. In countries with low burden, this consideration is likely to be influenced by intervention costs, which may be considered in economic evaluation. The total impact of PDMC is heavily dependent on the proportion of SMA cases that can access hospital care and the successful delivery of dihydroartemisinin-piperaquine. Further, the high risk of malaria morbidity persists for at least six months post-discharge, suggesting the need for longer-acting interventions.

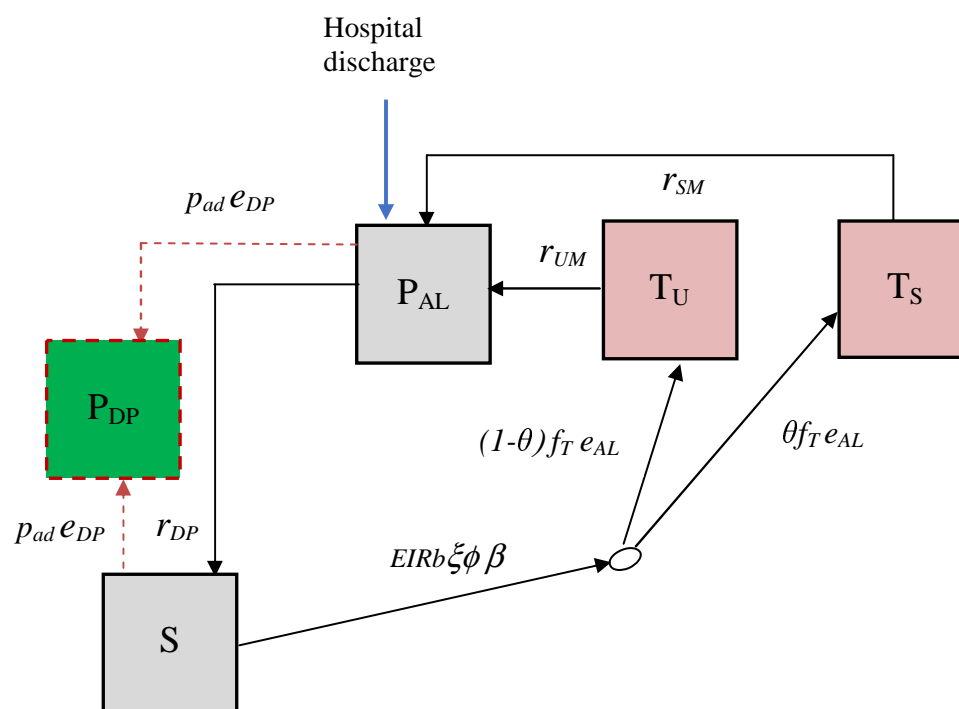
## Methods

### Post-discharge cohort model

We initially considered using an existing well-established malaria transmission model to describe the incidence of malaria outcomes post-discharge.<sup>20</sup> However, preliminary analysis indicated that the high incidence of uncomplicated and hospitalised malaria after a severe malarial anaemia (SMA) episode, as observed in trials and clinical studies,<sup>11,16,34</sup> was not adequately captured using this existing model, despite allowing for individual variation in

immunity and exposure to mosquito bites. A novel model was therefore created to describe the natural history of malaria illness in the post-discharge population, how it changes over time and with varying malaria transmission intensities.

We developed a compartmental model with the following states: prophylaxis ( $P_{DP}$  and  $P_{AL}$ ), susceptible ( $S$ ), treated uncomplicated malaria ( $T_U$ ), and treated hospitalised malaria ( $T_S$ ) (Figure 4).



**Figure 4:** Post-discharge cohort model

Boxes represent health states, while arrows and labels show health state transition rates and probabilities of an event. Definitions are given in the text and Table S1. See also supplementary information.

Children are given artemether-lumefantrine (AL) at the time of hospital discharge to clear any remaining malaria parasites, which provides a period of prophylaxis against reinfection. Therefore, children enter the model into the protected state  $P_{AL}$  on the first day of their treatment. We modelled this initial period of AL protection as gamma-distributed with an average of 13 days based on previous analysis of reinfection during clinical trials of AL.<sup>35</sup> After prophylaxis, children in the placebo group enter the susceptible state  $S$  and experience symptomatic malaria (uncomplicated or hospitalised) at a rate equal to the product of the local entomological

inoculation rate (EIR), the probability that an infectious bite leads to infection  $b$ , the probability of symptoms  $\phi$  and the relative exposure to bites among the post-discharge group of children  $\xi$  compared to the average child (Table S1). We only observe the incidence of symptomatic malaria, so these parameters are not individually identifiable and during model fitting, we estimate them as a product  $b\phi\xi$ . We assume that each infectious bite can only cause one symptomatic episode. Upon developing symptoms, we allowed a two-day delay for treatment seeking. Uncomplicated cases enter state  $T_U$  and then go on to receive AL treatment which clears parasites with 98% efficacy<sup>5</sup> and then provides 13 days of prophylaxis (state  $P_{AL}$ ). A proportion  $\theta$  of symptomatic malaria cases experience disease sufficiently severe to be readmitted to hospital (they need parenteral antimalarials or have severe malarial anaemia), and enter a treated severe state  $T_S$  which includes a mean hospital stay of 3 days based on the trial data.<sup>11</sup> AL is then given at discharge, and the children enter state  $P_{AL}$ . Hospitalised cases can include those who meet a stricter WHO definition of severe malaria as well as those who do not,<sup>27</sup> in line with the outcome metric in the post-discharge chemoprevention (PDMC) trial used for fitting the model.<sup>11</sup> We assumed that all uncomplicated and severe malaria episodes during follow-up were detected and treated. This is a reasonable assumption because the trial reimbursed participant costs of treatment-seeking at study clinics, diminishing financial barriers to care. We do not track asymptomatic infections and those infected without symptoms remain in the  $S$  state, which represents those susceptible to clinical malaria disease.

We further allow that the risk of symptomatic malaria per infectious bite could decline over time since hospital discharge, based on results from the PDMC trial,<sup>11</sup> other post-discharge studies,<sup>7</sup> and the hypothesis that recovery will reduce vulnerability. We estimated the rate of the decline by allowing total incidence in the cohort to be scaled by a Weibull survival curve:

$$e^{\left[-\left(\frac{t_d}{\lambda_{risk}}\right)^{\eta_{risk}}\right]}$$

where  $t_d$  is the time since hospital discharge and the scale and shape parameters  $\lambda_{risk}$  and  $\eta_{risk}$ , are estimated.

The probability that an infectious bite leads to infection and symptoms are both known to decline with EIR in the general population. We included this possibility by further scaling incidence by a

similar functional form to that identified in previous analyses<sup>19,32</sup> of the relationship of EIR and the probability of symptomatic malaria:

$$e^{-wEIR}$$

and estimated the parameter  $w$ , since the relationship is unknown in this post-discharge population.

We track children in the PDMC trial arm separately. The model describing these children is the same as the placebo group except for additional PDMC protection against uncomplicated and hospitalised episodes. PDMC is given as three full courses of dihydroartemisinin-piperaquine (DP) starting at the beginning of weeks 2, 6 and 10 post-discharge. We modelled DP prophylaxis as a probability of prevention of reinfection that declines over time since treatment, using a Weibull-survival function:<sup>12</sup>

$$e^{\left[-\left(\frac{t_{DP}}{\lambda_{DP}}\right)^{\eta_{DP}}\right]}$$

where  $t_{DP}$  is the time since the last PDMC treatment, and  $\lambda_{DP}$  and  $\eta_{DP}$  represent the scale and shape parameters of the Weibull distribution. We allowed for different adherence to each of the 3 courses of PDMC based on trial data<sup>11</sup> when fitting to the trial (Table 1, main text). For simplicity, we assumed that for each course of PDMC, caregivers either gave all 3 doses or none, which was relatively consistent with observations during implementation (only 1.5% of children received 1-2 doses of DP per treatment course, with the remainder taking all or none).<sup>23</sup> The DP protection is applied to all children in the PDMC intervention group, except children in states  $T_U$ ,  $T_S$  and  $P_{AL}$  (currently symptomatic and treated). When children leave the  $T_U$  and  $T_S$  states and return to  $S$ , we assume they have the same protection as those who did take PDMC. This approximately captures the trial recommendation that children should take PDMC once recovered from their symptomatic episode,<sup>34</sup> although it was not possible to explicitly include multiple PDMC timings outside the standard trial times due to computational constraints. We further explored whether current PDMC drug protection could reduce the probability of needing hospitalisation,  $\theta$ . We defined ‘current drug protection’ as inhibitory drug levels providing >1% probability of protection.

## Model fitting and validation

We fitted the model to the trial data described above using Bayesian methods. Semi-informative priors for the EIR in each hospital catchment area were based on the Malaria Atlas Project (MAP) estimates of transmission intensity within 20 km of the hospital location (Table S1).<sup>13</sup> We ran the model for each site and fitted to the daily incidence of uncomplicated and hospitalised malaria simultaneously across sites over the 6 months of follow-up. Since hospitalised malaria numbers were small in some sites, this method borrows information from the uncomplicated malaria cases to inform the posterior EIR. The parameters estimated during fitting were: the maximum incidence of symptomatic malaria (uncomplicated and hospitalised) per infectious bite at the beginning of post-discharge follow-up, the EIR in each site, the risk of hospitalised and uncomplicated malaria per infectious bite over time since discharge and with increasing EIR, and the effect of PDMC on severity of illness. All parameters except for EIR were given uninformative priors (Table S1). We coded the model in discrete time with a timestep of one day, with transition rates converted to daily probabilities. The model was fitted using Markov chain Monte Carlo methods in the RStan software.<sup>36</sup> We ran 4 chains, each having 5,000 burn-in and 10,000 sampling iterations. We assessed convergence through visualisation of posterior distributions and the Gelman-Rubin's convergence diagnostic.<sup>37</sup>

### **Population modelling of PDMC demand and impact in different epidemiological settings**

We next developed a full population model which tracks SMA in all under five year olds (Figure S3), and included the post-discharge cohort model within this framework. Children are stratified into two risk groups: those who experienced SMA within the last 6 months (high-risk) and those who did not (low-risk). When an episode of SMA occurs in low-risk individuals, they move to the high-risk state. The fitted post-discharge cohort model placebo arm was used to describe the incidence of malaria episodes in the high-risk group in the absence of PDMC, including SMA episodes. Using estimated total SMA incidence for a given area (see sources in the Results section), the remaining SMA episodes occurring in the low-risk group are calculated. In contrast to the model fitted to the trial setting, we assume the probability of children receiving treatment for uncomplicated episodes or being hospitalised when required is <100% (Table S1). We track SMA cases who are hospitalised separately from those who are not. We vary the assumed probability of hospitalisation from 30-70% based on the recent CARAMAL study tracking



children with suspected severe malaria in community settings.<sup>24</sup> We assume that the probability of hospitalisation is not related to previous hospitalisation status. Those who are hospitalised have a fixed 3-day stay in hospital, then we assume that all who survive receive AL at discharge as per standard severe malaria guidelines. Hospitalised SMA cases are eligible for PDMC. PDMC with DP is incorporated as in the post-discharge cohort model, except that adherence is lower as measured in a recent PDMC implementation study<sup>23</sup> (Table S2). We also further stratify the model compartments in children given PDMC to track which courses of PDMC have been taken (any combination of the 1<sup>st</sup>, 2<sup>nd</sup> and 3<sup>rd</sup> courses). After the 6-month high-risk period, individuals return to the low-risk group unless they experience a further episode of SMA. This model thus allows for the iterative process of SMA episodes increasing the risk of future SMA episodes, which affects future PDMC impact and demand.

We explicitly model mortality from SMA and from other types of hospitalised malaria during the 25-week post-SMA period. The case fatality rate of SMA in hospital is 7.4% based on a meta-analysis of hospital data.<sup>25,26</sup> We allow that only a proportion of other malaria inpatients usually meet the WHO severe malaria case definition criteria.<sup>27</sup> Since the severity of patients who are hospitalised may vary between settings, we use an in-hospital case fatality rate of 1% based on country reports from Kenya and Uganda, where the trial was carried out.<sup>27,38</sup> Of note, this is lower than the case fatality rate of ~9% for hospitalised patients who meet the WHO case definition of severe malaria.<sup>26</sup> Case fatality rates outside hospital are highly uncertain. We follow the approach of Camponovo *et al.*<sup>27</sup> who triangulated verbal autopsy malaria mortality data in the community with severe malaria incidence. In their analysis the case fatality rate of malaria outside hospital is approximately double that within hospital, and therefore we assume a case fatality rate of 14.8% for non-hospitalised SMA cases and 2% for other cases. In order to keep a constant population size, new individuals are added to the low-risk state at the same rate as the total mortality rate.

The full population model was coded in R as a deterministic discrete-time model and was run to equilibrium, with and without PDMC, to estimate the impact of the intervention. All code is available at [https://github.com/lucyokell/pdmc\\_model](https://github.com/lucyokell/pdmc_model). The trials and analyses were approved by the ethics committees at the Kenya Medical Research Institute, Makerere University, the Western Norway Regional Committee for Medical and Health Research Ethics, the Liverpool



School of Tropical Medicine, the University of Minnesota, and the Uganda National Council of Science and Technology.

## References

- 1 Casals-Pascual C, Kai O, Cheung JOP, *et al.* Suppression of erythropoiesis in malarial anemia is associated with hemozoin in vitro and in vivo. *Blood* 2006; **108**: 2569–77.
- 2 Ippolito MM, Kamavu LK, Kabuya J-B, *et al.* Risk factors for mortality in children hospitalized with severe malaria in northern Zambia: A retrospective case-control study. *Am J Trop Med Hyg* 2018; **98**: 1699–704.
- 3 Sawadogo S, Nébié K, Millogo T, Kafando E. Blood transfusion requirements among children with severe malarial anemia: a cross-sectional study in a second level reference hospital in Burkina Faso. *Pan Afr Med J* 2020; **37**: 108.
- 4 Obonyo CO, Vulule J, Akhwale WS, Grobbee DE. In-hospital morbidity and mortality due to severe malarial anemia in western Kenya. *Am J Trop Med Hyg* 2007; **77**: 23–8.
- 5 World Health Organisation. World malaria report 2021. 2021. <https://www.who.int/publications/i/item/9789240015791> (accessed Dec 28, 2020).
- 6 Madrid L, Casellas A, Saco C, *et al.* Postdischarge mortality prediction in sub-Saharan Africa. *Pediatrics* 2019; **143**: e20180606.
- 7 Kwambai TK, Mori AT, Nevitt S, Phiri K, Robberstad B, Ter-Kuile F. Post-discharge risks of morbidity and mortality in children admitted with severe anaemia and other syndromes in malaria endemic settings in Africa: A systematic review and meta-analysis. *Lancet Child Adolesc Health* 2022.
- 8 Phiri KS, Calis JCJ, Faragher B, *et al.* Long term outcome of severe anaemia in Malawian children. *PLoS One* 2008; **3**: e2903.
- 9 Price RN, Simpson JA, Nosten F, *et al.* Factors contributing to anemia after uncomplicated falciparum malaria. *Am J Trop Med Hyg* 2001; **65**: 614–22.
- 10 Phiri K, Esan M, van Hensbroek MB, Khairallah C, Faragher B, ter Kuile FO. Intermittent preventive therapy for malaria with monthly artemether-lumefantrine for the post-discharge management of severe anaemia in children aged 4-59 months in southern Malawi: a multicentre, randomised, placebo-controlled trial. *Lancet Infect Dis* 2012; **12**: 191–200.
- 11 Kwambai TK, Dhabangi A, Idro R, *et al.* Malaria chemoprevention in the postdischarge management of severe anemia. *N Engl J Med* 2020; **383**: 2242–54.
- 12 Okell LC, Cairns M, Griffin JT, *et al.* Contrasting benefits of different artemisinin combination therapies as first-line malaria treatments using model-based cost-effectiveness analysis. *Nat Commun* 2014; **5**: 5606.

- 13 Weiss DJ, Lucas TCD, Nguyen M, *et al.* Mapping the global prevalence, incidence, and mortality of *Plasmodium falciparum*, 2000-17: a spatial and temporal modelling study. *Lancet* 2019; **394**: 322–31.
- 14 Cameron E, Battle KE, Bhatt S, *et al.* Defining the relationship between infection prevalence and clinical incidence of *Plasmodium falciparum* malaria. *Nat Commun* 2015; **6**: 8170.
- 15 Ross A, Maire N, Molineaux L, Smith T. An epidemiologic model of severe morbidity and mortality caused by *Plasmodium falciparum*. *Am J Trop Med Hyg* 2006; **75**: 63–73.
- 16 Opoka RO, Hamre KES, Brand N, Bangirana P, Idro R, John CC. High postdischarge morbidity in Ugandan children with severe malarial anemia or cerebral malaria. *J Pediatric Infect Dis Soc* 2016; : iw060.
- 17 Opoka RO, Waiswa A, Harriet N, John CC, Tumwine JK, Karamagi C. Blackwater fever in Ugandan children with severe anemia is associated with poor postdischarge outcomes: A prospective cohort study. *Clin Infect Dis* 2020; **70**: 2247–54.
- 18 RTS,S Epidemiology EPI-MAL-002 Study Group. Baseline incidence of meningitis, malaria, mortality and other health outcomes in infants and young sub-Saharan African children prior to the introduction of the RTS,S/AS01E malaria vaccine. *Malar J* 2021; **20**: 197.
- 19 Griffin JT, Bhatt S, Sinka ME, *et al.* Potential for reduction of burden and local elimination of malaria by reducing *Plasmodium falciparum* malaria transmission: a mathematical modelling study. *Lancet Infect Dis* 2016; **16**: 465–72.
- 20 Griffin JT, Hollingsworth TD, Reyburn H, Drakeley CJ, Riley EM, Ghani AC. Gradual acquisition of immunity to severe malaria with increasing exposure. *Proc Biol Sci* 2015; **282**: 20142657.
- 21 Paton RS, Kamau A, Akech S, *et al.* Malaria infection and severe disease risks in Africa. *Science* 2021; **373**: 926–31.
- 22 Malaria atlas project - MAP. <https://malariaatlas.org/> (accessed Sept 27, 2021).
- 23 Nkosi-Gondwe T, Robberstad B, Mukaka M, *et al.* Adherence to community versus facility-based delivery of monthly malaria chemoprevention with dihydroartemisinin-piperaquine for the post-discharge management of severe anemia in Malawian children: A cluster randomized trial. *PLoS One* 2021; **16**: e0255769.
- 24 Hetzel MW, Okitawutshu J, Tshetu A, *et al.* Effectiveness of rectal artesunate as pre-referral treatment for severe malaria in children <5 years of age. *bioRxiv*. 2021; : 2021.09.24.21263966.
- 25 Mousa A, Al-Ta'iar A, Anstey NM, *et al.* The impact of delayed treatment of uncomplicated *P. falciparum* malaria on progression to severe malaria: A systematic review and a pooled multicentre individual-patient meta-analysis. *PLoS Med* 2020; **17**: e1003359.
- 26 Mousa A. The relationship between severe malaria phenotypes and age and estimates of burden across sub-Saharan Africa. Thesis Chapter in prep. .
- 27 Camponovo F, Bever CA, Galaktionova K, Smith T, Penny MA. Incidence and admission rates for severe malaria and their impact on mortality in Africa. *Malar J* 2017; **16**: 1.
- 28 Severe malaria. *Trop Med Int Health* 2014; **19 Suppl 1**: 7–131.

- 29 Conteh L, Shuford K, Agboraw E, Kont M, Kolaczinski J, Patouillard E. Costs and cost-effectiveness of malaria control interventions: A systematic literature review. *Value Health* 2021; **24**: 1213–22.
- 30 Ilunga-Ilunga F, Levêque A, Laokri S, Dramaix M. Incidence of catastrophic health expenditures for households: an example of medical attention for the treatment of severe childhood malaria in Kinshasa reference hospitals, Democratic Republic of Congo. *J Infect Public Health* 2015; **8**: 136–44.
- 31 Dhabangi A, Idro R, John CC, *et al.* Risk factors for recurrent severe anemia among previously transfused children in Uganda: an age-matched case-control study. *BMC Pediatr* 2019; **19**: 27.
- 32 Griffin JT, Hollingsworth TD, Okell LC, *et al.* Reducing Plasmodium falciparum malaria transmission in Africa: a model-based evaluation of intervention strategies. *PLoS Med* 2010; **7**. DOI:10.1371/journal.pmed.1000324.
- 33 Valletta JJ, Addy JWG, Reid AJ, *et al.* Individual-level variations in malaria susceptibility and acquisition of clinical protection. *Wellcome Open Res* 2021; **6**: 22.
- 34 Kwambai TK, Dhabangi A, Idro R, *et al.* Malaria chemoprevention with monthly dihydroartemisinin-piperaquine for the post-discharge management of severe anaemia in children aged less than 5 years in Uganda and Kenya: study protocol for a multi-centre, two-arm, randomised, placebo-controlled, superiority trial. *Trials* 2018; **19**: 610.
- 35 Bretscher MT, Dahal P, Griffin J, *et al.* The duration of chemoprophylaxis against malaria after treatment with artesunate-amodiaquine and artemether-lumefantrine and the effects of pfmdr1 86Y and pfcr1 76T: a meta-analysis of individual patient data. *BMC Med* 2020; **18**: 47.
- 36 Stan Development Team. RStan: the R interface to Stan. R package version 2.21.2, <http://mc-stan.org/>. 2020.
- 37 Gelman A, Rubin DB. Inference from iterative simulation using multiple sequences. *Stat Sci* 1992; **7**: 457–72.
- 38 World Health Organization. World Malaria Report 2015. Genève, Switzerland: World Health Organization, 2016.

## Acknowledgements

The study was funded by the Research Council of Norway through the Global Health and Vaccination (GLOBVAC) Programme (project number 234487), which is part of the European and Developing Countries Clinical Trials Partnership (EDCTP2), supported by the European Union through a cooperative agreement with the Liverpool School of Tropical Medicine. LCO is

funded by a UK Royal Society Dorothy Hodgkin fellowship and acknowledges funding from the MRC Centre for Global Infectious Disease Analysis (reference MR/R015600/1), jointly funded by the UK Medical Research Council (MRC) and the UK Foreign, Commonwealth & Development Office (FCDO), under the MRC/FCDO Concordat agreement and is also part of the EDCTP2 programme supported by the European Union; and acknowledges funding by Community Jameel. MC received support from an award (MR/R010161/1) jointly funded by the UK Medical Research Council (MRC) and the UK Department for International Development (DFID) under the MRC/DFID Concordat agreement, which is also part of the EDCTP2 programme supported by the European Union and is supported by a Sir Henry Dale Fellowship jointly funded by the Wellcome Trust and the Royal Society (Grant Number 220658/Z/20/Z). AM acknowledges funding by the UK Medical Research Council (Grant number: G98669, <https://mrc.ukri.org/>).

### **Author contributions**

**ATM and LCO:** Methodology, Software, Formal analysis, Writing - Original Draft, Visualisation, Writing - Review & Editing. **ACG and MC:** Conceptualisation, Writing - Review & Editing, Funding acquisition. **FOTK, KP and BR:** Conceptualisation, Writing - Review & Editing, Project administration, Funding acquisition, Supervision. **CK, TKK, AD, TNG, RO, AM, RI, MJK, TCDL and DJW:** Data curation, Validation, Investigation, Writing - Review & Editing.

### **Competing interests**

There are no competing interests to declare.