

Supplementary Materials

The relationship of major diseases with childlessness: a sibling matched case-control and population register study in Finland and Sweden

Aoxing Liu, Evelina T Akimova, Xuejie Ding, Sakari Jukarainen, Pekka Vartiainen, Tuomo Kiiskinen, Sara Kuitunen, Aki S Havulinna, Mika Gissler, Stefano Lombardi, Tove Fall, Melinda C Mills*, Andrea Ganna*

Institute for Molecular Medicine Finland, FIMM, University of Helsinki, Helsinki, Finland (A Liu PhD, S Jukarainen MD, PhD, P Vartiainen MD, PhD, T Kiiskinen MD, S Kuitunen MSc, A S Havulinna DSc, A Ganna PhD); **Leverhulme Centre for Demographic Science and Nuffield College, University of Oxford, Oxford, United Kingdom** (E T Akimova PhD, X Ding PhD, Prof M C Mills PhD); **Finnish Institute for Health and Welfare, THL, Helsinki, Finland** (T Kiiskinen MD, A S Havulinna DSc, Prof M Gissler PhD); **Research Centre for Child Psychiatry and Invest Research Flagship, University of Turku, Turku, Finland** (Prof M Gissler PhD); **Academic Primary Health Care Centre, Stockholm, Sweden** (Prof. M Gissler PhD); **Department of Molecular Medicine and Surgery, Karolinska Institutet, Stockholm, Sweden** (Prof. M Gissler PhD); **Institute for Economic Research, VATT, Finland** (S Lombardi PhD); **Molecular Epidemiology, Department of Medical Sciences, and Science for Life Laboratory, Uppsala University, Uppsala, Sweden** (Prof T Fall PhD); **Analytic and Translational Genetics Unit, ATGU, Massachusetts General Hospital, Boston, MA, USA** (A Ganna PhD); and **Program in Medical and Population Genetics, Broad Institute of MIT and Harvard, Cambridge, MA, USA** (A Ganna PhD)

*Corresponding author: Melinda C Mills (melinda.mills@nuffield.ox.ac.uk) and Andrea Ganna (andrea.ganna@helsinki.fi).

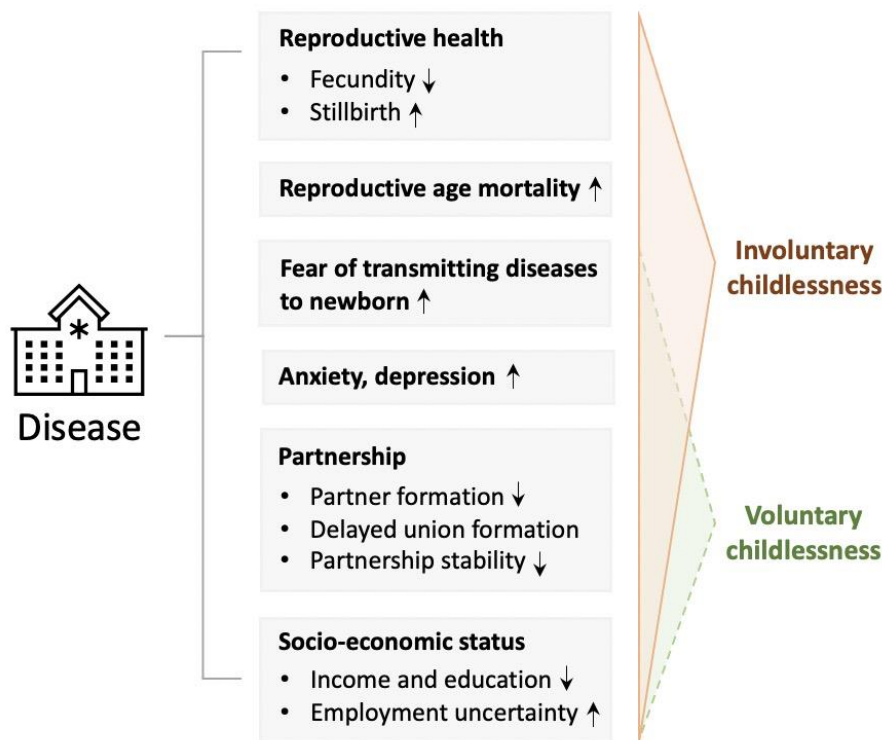
Table of Contents

1. Theoretical framework for the relationship of diseases with childlessness.....	2
2. Nationwide registers from Finland and Sweden.....	2
3. Disease diagnosis.....	2
3.1. Definition of disease endpoints through ICD-8, ICD-9, and ICD-10.....	2
3.2. Diseases not included due to virtually complete lack of children.....	25
3.3. Disease prevalence from Finland and Sweden.....	26
4. Relationship of disease diagnoses with childlessness.....	27
4.1. Effects of each disease diagnosis.....	27
4.2. Effects by disease category.....	28
4.3. Age-of-onset-dependent effects.....	29
5. Number of unborn children and total fertility rate related to disease diagnoses.....	30
6. Mediation effect by singlehood.....	36
6.1. Effects on singlehood.....	37
6.2. Mediation analysis.....	38
6.3. Effects among individuals with registered partner.....	39
7. Population-based and sensitivity analyses.....	41

1. Theoretical framework for the relationship of diseases with childlessness

Childless individuals are defined as those who are involuntarily childless through reasons such as infertility or inability to find a partner and voluntarily childless or ‘childfree’ who prefer a life without children. Diseases can influence individuals' chances of remaining childless over their lifetime (**figure S1**). First, diseases may directly influence childlessness through medical conditions that affect the fecundity and mortality of the individual as well as the risk of stillbirth. Second, diseases can impact selection into a partnership which in turn lowers the chance of being partnered and thus having children. Also, some may opt to remain childless due to the concern of genetic transmission of heritable diseases. Finally, diseases are associated with lower socio-economic status, unemployment, and economic uncertainty, which may amplify the psychosocial impact of diseases on childlessness. There are of course multiple non-disease related reasons that individuals postpone or remain childless related to factors such as individual choice, work-life reconciliation, housing and economic uncertainty, or inability to find a partner.

Figure S1: Theoretical framework for the relationship of diseases with childlessness.



2. Nationwide registers from Finland and Sweden

All Finnish and Swedish register data used in this study can be applied from national data agencies including Statistics Finland (https://www.stat.fi/index_en.html), Population Information System (DVV, <https://dvv.fi/en/individuals>), Finnish Institute for Health and Welfare (THL, <https://thl.fi/en/web/thlfi-en/statistics-and-data/data-and-services/register-descriptions/care-register-for-health-care>) and Finnish Cancer Registry (<https://cancerregistry.fi/>) from Finland, and Statistics Sweden (<https://www.scb.se/en/>) and National Board of Health and Welfare (Socialstyrelsen, <https://www.socialstyrelsen.se/en/>) from Sweden.

3. Disease diagnosis

3.1. Definition of disease endpoints through ICD-8, ICD-9, and ICD-10

Disease endpoints were defined by clinical expert groups, through International Classification of Diseases (ICD) codes of version 8 (1969-1986), 9 (1987-1995 in Finland, 1987-1996 in Sweden), and 10 (1996-2018 in Finland, 1997-2018 in Sweden).

To remove highly correlated disease diagnoses, we estimated tetrachoric correlations between every two disease endpoints using individual-level data and only kept the one with the highest prevalence if a group of disease diagnoses had tetrachoric correlations higher than 0.7. After removing highly correlated disease diagnoses, we considered 414 disease diagnoses for which we had more than 30 affected individuals in the sibling-based analysis for each sex, in Finland or Sweden.

Disease categories were defined based on the ICD coding system. Among 16 disease categories, infectious-parasitic diseases and congenital anomalies were defined only in Finland while all remaining categories were defined in both countries. Number of diseases endpoints defined for each category is presented in **figure S2**.

Table S1: Definition of 414 disease endpoints (16 categories) through ICD-8, ICD-9, and ICD-10.

Disease	ICD-8	ICD-9	ICD-10	Category	Population
Respiratory TBC, ICD-8 codes not specifying whether confirmed bacteriologically or histologically	011, 012	--	--	Infectious-parasitic	Finland
Other salmonella infections	003	003	A02	Infectious-parasitic	Finland
Viral and other specified intestinal infections	0088, 0089	008	A08	Infectious-parasitic	Finland
Diarrhoea and gastroenteritis of presumed infectious origin	009	009	A09	Infectious-parasitic	Finland
Tuberculosis	010, 011, 012, 013, 014, 015, 016, 017, 018	010, 011, 012, 013, 014, 015, 016, 017, 018	A15, A16, A17, A18, A19	Infectious-parasitic	Finland
Scarlet fever	0341	0341	A38	Infectious-parasitic	Finland
Meningococcal infection	036	036	A39	Infectious-parasitic	Finland
Other septicaemia	03810, 03820, 03880, 03888, 03897, 03899	0381, 0382, 0383, 0384, 0388	A41	Infectious-parasitic	Finland
Erysipelas	035	035	A46	Infectious-parasitic	Finland
Bacterial infection, other or unspecified	039	040, 041	A48, A49	Infectious-parasitic	Finland
Gonococcal infection	098	098	A54	Infectious-parasitic	Finland
Anogenital herpesviral [herpes simplex] infection	05402	0541A	A60	Infectious-parasitic	Finland
Other predominantly sexually transmitted diseases, not elsewhere classified	0990, 0999	0990A, 0993A, 0994A, 0998X, 0999X	A63, A64	Infectious-parasitic	Finland
Other diseases caused by chlamydiae	--	0769A, 0769B, 0769C, 0769D, 0769E, 0769F, 0769X	A74	Infectious-parasitic	Finland
Acute poliomyelitis	040, 041, 042, 043, 044, 045	045	A80	Infectious-parasitic	Finland
Viral meningitis	045	047	A87	Infectious-parasitic	Finland
Arthropod-borne viral fevers and viral haemorrhagic fevers	061, 067, 068	065, 066, 0786, 0787	A90, A91, A92, A93, A94, A95, A96, A98, A99	Infectious-parasitic	Finland

Herpesviral [herpes simplex] infections	05400, 05401, 05403, 05404, 05405, 05406, 05407, 05409	0540A, 0541B, 0542A, 0542B, 0543A, 0543B, 0544A, 0544B, 0544C, 0544D, 0544X, 0545A, 0546A, 0547A, 0547X, 0548X, 0549X	B00	Infectious-parasitic	Finland
Viral infections characterized by skin and mucous membrane lesions	0790, 0791	0780A, 0781A, 0781B, 0781D, 0783A	B00, B01, B02, B03, B04, B05, B06, B07, B08, B09	Infectious-parasitic	Finland
Varicella [chickenpox]	052	052	B01	Infectious-parasitic	Finland
Zoster [herpes zoster]	053	053	B02	Infectious-parasitic	Finland
Measles	055	055	B05	Infectious-parasitic	Finland
Viral hepatitis	070	070	B15, B16, B17, B18, B19	Infectious-parasitic	Finland
Other viral diseases	075, 0792, 0799	0785, 0787, 0788	B25, B26, B27, B30, B33, B34	Infectious-parasitic	Finland
Mumps	072	072	B26	Infectious-parasitic	Finland
Infectious mononucleosis	075	075	B27	Infectious-parasitic	Finland
Mycoses	110, 111, 112, 113, 114, 115, 116, 117	110, 111, 112, 114, 115, 116, 117, 118	B35, B36, B37, B38, B39, B40, B41, B42, B43, B44, B45, B46, B47, B48, B49	Infectious-parasitic	Finland
Candidiasis	112	112	B37	Infectious-parasitic	Finland
Pediculosis, acariasis and other infestations	132, 133, 134	132, 133, 134	B85, B86, B87, B88, B89	Infectious-parasitic	Finland
Sequelae of other and unspecified infectious and parasitic diseases	066, 079, 074	139	B94	Infectious-parasitic	Finland
Bacterial, viral, and other infectious agents	0340, 074, 078	079, 0340	B95, B96, B97	Infectious-parasitic	Finland
Other infectious diseases	13608, 13609	1368, 1369	B99	Infectious-parasitic	Finland
Malignant neoplasm of testis	186	186	C62	Neoplasms	Finland
Malignant neoplasm of brain	191	191	C71	Neoplasms	Finland
Secondary and unspecified malignant neoplasm of lymph nodes	196	--	C77	Neoplasms	Finland
Lymphoid leukaemia	204	204	C91	Neoplasms	Finland, Sweden
Myeloid leukaemia	205	205	C92	Neoplasms	Finland, Sweden
Carcinoma in situ of uteri, other/unspecified	--	233B	D067, D069	Neoplasms	Sweden
Benign neoplasm: other/unspecified salivary gland	21020	210C	D117, D119	Neoplasms	Sweden
Benign neoplasm: Long bones of lower limb	21306	2137	D162	Neoplasms	Finland
Benign neoplasm: Long bones of lower limb	21306	213H	D162	Neoplasms	Sweden

Benign lipomatous neoplasm of other sites/unspecified	214	214	D177, D179	Neoplasms	Finland
Haemangioma, any site	22700	2280	D180	Neoplasms	Finland
Haemangioma, any site	22700	228A	D180	Neoplasms	Sweden
Melanocytic naevi, other sites/unspecified	--	216W, 216X	D229	Neoplasms	Sweden
Benign neoplasm: Skin of other and unspecified parts of face	21604	2163B, 2163C, 2163D, 2163E, 2163F, 2163G, 2163X	D233	Neoplasms	Finland
Benign neoplasm: Skin of trunk	21606	2165B, 2165C, 2165D, 2165E, 2165F, 2165G, 2165X	D235	Neoplasms	Finland
Benign neoplasm: Skin, unspecified	21600, 21609, 2161, 2162, 2168, 2169	2168B, 2168C, 2168D, 2168E, 2168F, 2168G, 2168X, 2169B, 2169C, 2169D, 2169E, 2169F, 2169G, 2169X	D239	Neoplasms	Finland
Leiomyoma of uterus	21899	218	D25	Neoplasms	Finland
Benign neoplasm: Vulva	2212	--	D280	Neoplasms	Finland
Benign neoplasm: Pituitary gland, craniopharyngeal duct	22620	227D	D352, D353	Neoplasms	Sweden
Iron deficiency anaemia secondary to blood loss (chronic)	28000	2800	D500	Blood and immune mechanism	Finland
Iron deficiency anaemia secondary to blood loss (chronic)	28000	280	D500	Blood and immune mechanism	Sweden
Other and unspecified iron deficiency	28008, 28009	2801, 2808, 2809	D501, D508, D509	Blood and immune mechanism	Finland
Other and unspecified iron deficiency	28008, 28009	280	D501, D508, D509	Blood and immune mechanism	Sweden
Allergic purpura	2870	2870	D690	Blood and immune mechanism	Finland
Allergic purpura	2870	287A	D690	Blood and immune mechanism	Sweden
Sarcoidosis	135	135	D86	Blood and immune mechanism	Finland, Sweden
Hypothyroidism, other/unspecified	244	2448X, 2449	E038, E039	Endocrine-nutritional-metabolic	Finland
Hypothyroidism, other/unspecified	244	244W, 244X	E038, E039	Endocrine-nutritional-metabolic	Sweden
Nontoxic multinodular goitre	241	2411	E042	Endocrine-nutritional-metabolic	Finland
Nontoxic multinodular goitre	241	241B	E042	Endocrine-nutritional-metabolic	Sweden
Thyrototoxicosis with diffuse goitre	2420	2420	E050	Endocrine-nutritional-metabolic	Finland
Thyrototoxicosis with diffuse goitre	2420	242A	E050	Endocrine-nutritional-metabolic	Sweden
Thyroiditis, ILD-related definition	245	2448A	E06, E0380	Endocrine-nutritional-metabolic	Finland

Type 1 diabetes	250 (onset before age 40)	2500B, 2501B, 2502B, 2503B, 2504B, 2505B, 2506B, 2507B, 2508B	E10	Endocrine-nutritional-metabolic	Finland
Type 1 diabetes	250 (onset before age 40)	250 (onset before age 40)	E10	Endocrine-nutritional-metabolic	Sweden
Type 2 diabetes	--	2500A, 2501A, 2502A, 2503A, 2504A, 2505A, 2506A, 2507A, 2508A	E11	Endocrine-nutritional-metabolic	Finland
Hypoglycaemia, other or unspecified	25101	251C	E161, E162	Endocrine-nutritional-metabolic	Sweden
Hyperprolactinaemia	--	2531A	E221	Endocrine-nutritional-metabolic	Finland
Polycystic ovarian syndrome	25690	2564	E282	Endocrine-nutritional-metabolic	Finland
Polycystic ovarian syndrome	25690	256E	E282	Endocrine-nutritional-metabolic	Sweden
Other specified/unspecified nutritional deficiencies	26998, 26999	2693, 2698, 2699	E638, E639	Endocrine-nutritional-metabolic	Finland
Other specified/unspecified nutritional deficiencies	26998, 26999	269D, 269W, 269X	E638, E639	Endocrine-nutritional-metabolic	Sweden
Obesity, other/unspecified	27799	2780	E668, E669	Endocrine-nutritional-metabolic	Finland
Obesity, other/unspecified	27799	278A	E668, E669	Endocrine-nutritional-metabolic	Sweden
Other mental disorders due to brain damage and dysfunction and to physical disease	2940, 2941, 2942, 2948, 2949, 309	2938	F06	Mental-behavioural	Finland
Other mental disorders due to brain damage and dysfunction and to physical disease	2940, 2941, 2942, 2948, 2949, 309	293W	F06	Mental-behavioural	Sweden
Acute alcohol intoxication	--	3050	F100	Mental-behavioural	Finland
Acute alcohol intoxication	--	305A	F100	Mental-behavioural	Sweden
Alcohol dependence	303	303	F102	Mental-behavioural	Finland, Sweden
Mental and behavioural disorders due to opioids	3040, 3041	304A	F11	Mental-behavioural	Sweden
Mental and behavioural disorders due to cannabinoids	3045	3052, 3043	F12	Mental-behavioural	Finland
Mental and behavioural disorders due to cannabinoids	3045	304D	F12	Mental-behavioural	Sweden
Mental and behavioural disorders due to sedatives or hypnotics	3042, 3043	3041, 3054	F13	Mental-behavioural	Finland
Mental and behavioural disorders due to sedatives or hypnotics	3042, 3043	304B	F13	Mental-behavioural	Sweden

Mental and behavioural disorders due to cocaine	3044	304C	F14	Mental-behavioural	Sweden
Mental and behavioural disorders due to use of other stimulants, including caffeine	3046	3044, 3057	F15	Mental-behavioural	Finland
Mental and behavioural disorders due to use of other stimulants, including caffeine	3046	304E	F15	Mental-behavioural	Sweden
Mental and behavioural disorders due to hallucinogens	3047	304F	F16	Mental-behavioural	Sweden
Mental and behavioural disorders due to multiple drug use and use of other psychoactive substances	3048, 3049	3049, 3059	F19	Mental-behavioural	Finland
Mental and behavioural disorders due to multiple drug use and use of other psychoactive substances	3048, 3049	304X, 305X	F19	Mental-behavioural	Sweden
Schizophrenia	2950, 2951, 2952, 2953, 2954, 2955, 2956, 2958, 2959	2951, 2952, 2953, 2956, 2959	F20	Mental-behavioural	Finland
Schizophrenia	2950, 2951, 2952, 2953, 2954, 2955, 2956, 2958, 2959	295B, 295C, 295D, 295G, 295X	F20	Mental-behavioural	Sweden
Persistent delusional disorders	297	2971	F22	Mental-behavioural	Finland
Acute and transient psychotic disorders	2980, 2981, 2982, 2983	298	F23	Mental-behavioural	Finland
Schizoaffective disorder	2957	2957	F25	Mental-behavioural	Finland
Schizoaffective disorder	2957	295H	F25	Mental-behavioural	Sweden
Other and unspecified nonorganic psychotic disorders	29999	2989	F28, F29	Mental-behavioural	Finland
Other and unspecified nonorganic psychotic disorders	29999	298X	F28, F29	Mental-behavioural	Sweden
Mood disorders	296, 29800, 3004, 30110	296, 3004A, 3011D	F30, F31, F32, F33, F34, F38, F39	Mental-behavioural	Finland
Bipolar affective disorders	2961, 2962, 2963, 2968	2962, 2963, 2964, 2967	F31	Mental-behavioural	Finland
Bipolar affective disorders	2961, 2962, 2963, 2968	296C, 296D, 296E	F31	Mental-behavioural	Sweden
Persistent mood disorders	3004	3004	F34	Mental-behavioural	Finland
Persistent mood disorders	3004	300E	F34	Mental-behavioural	Sweden
Other and unspecified mood [affective] disorders	29699	--	F38, F39	Mental-behavioural	Sweden
Phobic anxiety disorders	3002	3002C, 3002D, 3002X	F40	Mental-behavioural	Finland

Phobic anxiety disorders	3002	300C	F40	Mental-behavioural	Sweden
Anxiety disorders	3000, 3001, 3002, 30030, 3005, 3006, 3007, 3008, 3009, 305, 30680, 30799	3000, 3001, 3002, 3003, 3006, 3007, 3008, 3009, 3078A, 309	F40, F41, F42, F43, F44, F45, F48	Mental-behavioural	Finland
Panic disorder	--	3000B, 3002B	F410	Mental-behavioural	Finland
Panic disorder	--	300A, 300C	F410	Mental-behavioural	Sweden
Generalized anxiety disorder	--	3000C	F411	Mental-behavioural	Finland
Generalized anxiety disorder	--	300A	F411	Mental-behavioural	Sweden
Other anxiety disorders	3000	3000A	F412, F413, F418, F419	Mental-behavioural	Finland
Other anxiety disorders	3000	300A	F412, F413, F418, F419	Mental-behavioural	Sweden
Obsessive-compulsive disorder	3003	3003	F42	Mental-behavioural	Finland
Obsessive-compulsive disorder	3003	300D	F42	Mental-behavioural	Sweden
Other reaction to severe stress, and adjustment disorders	--	309	F430, F432, F438, F439	Mental-behavioural	Finland, Sweden
Post-traumatic stress disorder	--	309X	F431	Mental-behavioural	Sweden
Dissociative [conversion] disorders	3001	3001	F44	Mental-behavioural	Finland
Dissociative [conversion] disorders	3001	300B	F44	Mental-behavioural	Sweden
Somatoform disorder	305	3007, 3008	F45	Mental-behavioural	Finland
Somatoform disorder	305	300H, 300W	F45	Mental-behavioural	Sweden
Other neurotic disorders	3005, 3006, 3007, 3008, 3009	3006, 3009	F48	Mental-behavioural	Finland
Other neurotic disorders	3005, 3006, 3007, 3008, 3009	300G, 300X	F48	Mental-behavioural	Sweden
Anorexia (incl.atypical)	784	3071, 7830	F500, F501	Mental-behavioural	Finland
Anorexia (incl.atypical)	784	307B, 783A	F500, F501	Mental-behavioural	Sweden
Bulimia nervosa (incl.atypical)	--	307F	F502, F503	Mental-behavioural	Sweden
Other eating disorders	--	307F	F504, F505, F508, F509	Mental-behavioural	Sweden
Nonorganic sleeping disorders	30640	3074	F51	Mental-behavioural	Finland
Paranoid personality disorder	3010	3010	F600	Mental-behavioural	Finland
Schizoid personality disorder	3012	3012	F601	Mental-behavioural	Finland
Dissocial personality disorder	3017	3017	F602	Mental-behavioural	Finland
Emotionally unstable personality disorder	3013	3018D	F603	Mental-behavioural	Finland
Emotionally unstable personality disorder	3013	301W	F603	Mental-behavioural	Sweden
Anxious personality disorder	--	301W	F606	Mental-behavioural	Sweden

Dependent personality disorder	3016	3016	F607	Mental-behavioural	Finland
Other specified and unspecified personality disorders	30188, 3019	3018B, 3018E, 3018X	F608, F609	Mental-behavioural	Finland
Other specified and unspecified personality disorders	30188, 3019	301W	F608, F609	Mental-behavioural	Sweden
Mild intellectual disability	311	3170	F70	Mental-behavioural	Finland
Mild intellectual disability	311	317	F70	Mental-behavioural	Sweden
Moderate intellectual disability	312	3180	F71	Mental-behavioural	Finland
Moderate intellectual disability	312	318A	F71	Mental-behavioural	Sweden
Severe intellectual disability	313	3181	F72	Mental-behavioural	Finland
Severe intellectual disability	313	318B	F72	Mental-behavioural	Sweden
Profound intellectual disability	314	3182	F73	Mental-behavioural	Finland
Profound intellectual disability	314	318C	F73	Mental-behavioural	Sweden
Other and unspecified intellectual disability	315	3199	F78, F79	Mental-behavioural	Finland
Other and unspecified intellectual disability	315	319	F78, F79	Mental-behavioural	Sweden
Specific development disorders of scholastic skills	3061	3150, 3151, 3152	F81	Mental-behavioural	Finland
Behavioural disorders	30899	3120A, 3123D, 3138A	F91	Mental-behavioural	Finland
Other behavioural and emotional disorders with onset usually occurring in childhood and adolescence	3066, 3067	3076, 3077, 3075D, 3075C	F98	Mental-behavioural	Finland
Other behavioural and emotional disorders with onset usually occurring in childhood and adolescence	3066, 3067	307F, 307G, 307H	F98	Mental-behavioural	Sweden
Bacterial meningitis	320	320	G00, G01	Nervous system	Finland, Sweden
Other encephalitis	32308, 32309	3238B, 3238X	G041, G048, G049, G051, G052, G058	Nervous system	Finland
Multiple Sclerosis	34099	340	G35	Nervous system	Finland, Sweden
Epilepsy	3450, 3451, 3453, 3459	3450, 3451, 3454, 3455, 3456, 3457, 3458, 3459	G40	Nervous system	Finland
Epilepsy	3450, 3451, 3453, 3459	345J, 345K, 345L, 345M, 345N, 345W, 345X	G40	Nervous system	Sweden
Status epilepticus	34520	3452, 3453	G41	Nervous system	Finland
Status epilepticus	34520	345P, 345Q	G41	Nervous system	Sweden
Migraine	34609	346	G43	Nervous system	Finland, Sweden
Other headache syndromes	34601	--	G44	Nervous system	Finland, Sweden

Other sleep disorders	--	3478, 3074	G470, G471, G472, G478, G479	Nervous system	Finland
Sleep apnoea	--	3472	G473	Nervous system	Finland
Sleep apnoea	--	347	G473	Nervous system	Sweden
Bell palsy	350	3510	G510	Nervous system	Finland
Bell palsy	350	351A	G510	Nervous system	Sweden
Carpal tunnel syndrome	--	3540	G560	Nervous system	Finland
Carpal tunnel syndrome	--	354A	G560	Nervous system	Sweden
Lesion of radial nerve	35708	3543	G563	Nervous system	Finland
Lesion of sciatic nerve	35399	3550	G570	Nervous system	Finland
Other and unspecified mononeuropathies, also in other diseases	35708	3559	G588, G589, G59	Nervous system	Finland
Muscular dystrophy	33030,33090	3591	G710	Nervous system	Finland
Muscular dystrophy	33030,33090	359B	G710	Nervous system	Sweden
Cerebral palsy	343	343	G80	Nervous system	Finland
Hemiplegia	34400	342	G81	Nervous system	Finland, Sweden
Other and unspecified paralytic syndromes	34408,34409	344	G838, G839	Nervous system	Finland, Sweden
Disorders of brain, other and unspecified	34798,34799	3488,3489	G938, G939, G948	Nervous system	Finland
Disorders of brain, other and unspecified	34798,34799	348W,348X	G938, G939, G948	Nervous system	Sweden
Postprocedural disorders of nervous system	--	3490, 997	G97	Nervous system	Finland
Unilateral visual impairment (ICD-8)	3792, 3793	--	--	Eye and adnexa	Finland
Chalazion	3780	3732	H001	Eye and adnexa	Finland
Disorders of lacrimal system	--	--	H04	Eye and adnexa	Finland
Stenosis and insufficiency of lacrimal passages	36802	3755	H045	Eye and adnexa	Finland
Conjunctivitis (acute, non-atopic)	36000,36008,36009	3720	H100, H102, H103, H105, H108, H109, H131, H132	Eye and adnexa	Finland
Conjunctivitis (acute, non-atopic)	36000,36008,36009	372A	H100, H102, H103, H105, H108, H109, H131, H132	Eye and adnexa	Sweden
Corneal ulcer	36300	3700	H160	Eye and adnexa	Finland
Other keratitis	36301, 36302, 36308, 36309, 36390, 36391, 36392, 36393, 36394, 36398, 36399, 36001, 36002, 36905	3702, 3703, 3705, 3706	H161, H162, H163, H164, H168, H169	Eye and adnexa	Finland
Other keratitis	36301, 36302, 36308, 36309, 36390, 36391, 36392, 36393, 36394, 36398, 36399, 36001, 36002, 36905	370C, 370D, 370F, 370G	H161, H162, H163, H164, H168, H169	Eye and adnexa	Sweden
Keratoconus	37103	371G	H186	Eye and adnexa	Sweden
Acute and subacute iridocyclitis	36400, 36401	3640	H200	Eye and adnexa	Finland
Acute and subacute iridocyclitis	36400, 36401	364A	H200	Eye and adnexa	Sweden

Other cataract	37400, 37401, 37403, 37404, 37405, 37406, 37407, 37408, 37409	3660, 3662, 3663, 3664, 3665, 3668, 3669	H26	Eye and adnexa	Finland
Other cataract	37400, 37401, 37403, 37404, 37405, 37406, 37407, 37408, 37409	366A, 366C, 366D, 366E, 366F, 366W, 366X	H26	Eye and adnexa	Sweden
Aphakia	37872	3793A	H270	Eye and adnexa	Finland
Chorioretinal inflammation	365, 36700	3630, 3631, 3632	H30, H320	Eye and adnexa	Finland
Retinal detachment with retinal break	37602	361A	H330	Eye and adnexa	Sweden
Other, unspecified, and serous retinal detachments	37600, 37601, 37603, 37609	3618, 3619	H332, H335	Eye and adnexa	Finland
Other, unspecified, and serous retinal detachments	37600, 37601, 37603, 37609	361W, 361X	H332, H335	Eye and adnexa	Sweden
Other and unspecified glaucoma	3752, 37598, 37599	3656X, 3656C, 3658, 3659	H408, H409	Eye and adnexa	Finland
Optic neuritis	36702, 36703, 36709	3773	H46	Eye and adnexa	Finland
Convergent concomitant strabismus	37300	3780	H500	Eye and adnexa	Finland
Convergent concomitant strabismus	37300	378A	H500	Eye and adnexa	Sweden
Divergent concomitant strabismus	37301	3781	H501	Eye and adnexa	Finland
Divergent concomitant strabismus	37301	378B	H501	Eye and adnexa	Sweden
Vertical strabismus	37302	3783	H502	Eye and adnexa	Finland
Heterophoria	37303	3784	H505	Eye and adnexa	Finland
Heterophoria	37303	378E	H505	Eye and adnexa	Sweden
Hypermetropia	37001	3670	H520	Eye and adnexa	Finland
Myopia	37002	3671	H521	Eye and adnexa	Finland
Astigmatism	37000	3672	H522	Eye and adnexa	Finland
Anisometropia and aniseikonia	37002	3673	H523	Eye and adnexa	Finland
Presbyopia	37002	3674	H524	Eye and adnexa	Finland
Visual disturbances	--	--	H53	Eye and adnexa	Finland
Amblyopia ex anopsia	37720	3680	H530	Eye and adnexa	Finland
Otitis externa	380	--	H60	Ear and mastoid process	Sweden
Otitis externa, unspecified	38002, 38003, 38004, 38008, 38009	3801A, 3801B	H609	Ear and mastoid process	Finland
Otitis externa, unspecified	38002, 38003, 38004, 38008, 38009	380B	H609	Ear and mastoid process	Sweden
Perichondritis of external ear	38798	3800	H610	Ear and mastoid process	Finland
Nonsuppurative otitis media	--	381	H65	Ear and mastoid process	Finland, Sweden
Acute suppurative otitis media	3810	3820	H660	Ear and mastoid process	Finland
Acute suppurative otitis media	3810	382A	H660	Ear and mastoid process	Sweden
Otitis media, unspecified	3819	--	H669	Ear and mastoid process	Finland

Eustachian salpingitis and obstruction	38400, 38401, 38402	3816	H680, H681	Ear and mastoid process	Finland
Eustachian salpingitis and obstruction	38400, 38401, 38402	381G	H680, H681	Ear and mastoid process	Sweden
Acute mastoiditis	3820, 3830	3830	H700	Ear and mastoid process	Finland
Chronic mastoiditis	3821, 3831	3831	H701	Ear and mastoid process	Finland
Cholesteatoma of middle ear	38700	3853	H71	Ear and mastoid process	Finland
Otosclerosis	38699	387	H80	Ear and mastoid process	Finland
Sensorineural hearing loss	--	3891	H903, H904, H905	Ear and mastoid process	Finland
Sensorineural hearing loss	--	389B	H903, H904, H905	Ear and mastoid process	Sweden
Other specified/unspecified hearing loss	389	3898,3899	H918, H919	Ear and mastoid process	Finland
Other specified/unspecified hearing loss	389	389W,389X	H918, H919	Ear and mastoid process	Sweden
Hypertension, essential	401,402,403,404	401,403	I10	Circulatory system	Finland, Sweden
Hypertensive Renal Disease	40399	4039	I12	Circulatory system	Finland
Angina pectoris	413	413,4110,4111	I20	Circulatory system	Finland
Myocardial infarction, strict	410	410	I21, I22	Circulatory system	Finland, Sweden
Pulmonary embolism	450	415	I26	Circulatory system	Finland, Sweden
Pericarditis	420	420	I30, I32	Circulatory system	Finland, Sweden
Non-rheumatic valve diseases	394, 395, 396, 4240, 4241	424	I34, I35, I36, I37	Circulatory system	Finland, Sweden
Myocarditis	422, 742	422	I40, I41	Circulatory system	Finland, Sweden
Paroxysmal tachycardia	4275	4270, 4271, 4272	I47	Circulatory system	Finland
Paroxysmal tachycardia	4275	427A, 427B, 427C	I47	Circulatory system	Sweden
Atrial fibrillation and flutter	42792	4273	I48	Circulatory system	Finland
Atrial fibrillation and flutter	42792	427D	I48	Circulatory system	Sweden
Other arrhythmias	42790, 42791, 42798, 42799	4274, 4275, 4276, 4278	I49	Circulatory system	Finland
Other arrhythmias	42790, 42791, 42798, 42799	427E, 427F, 427G, 427W	I49	Circulatory system	Sweden
Heart failure, strict	42700, 42710, 428, 7824	4029B, 404, 4148, 428	I50, I110, I130, I132	Circulatory system	Finland
Heart failure, strict	42700, 42710, 428, 7824	402X, 404, 414W, 428	I50, I110, I130, I132	Circulatory system	Sweden
Other or ill-defined heart diseases	42899, 42999	429	I51, I52	Circulatory system	Finland, Sweden
Subarachnoid haemorrhage	430	430	I60	Circulatory system	Finland, Sweden
Intracerebral haemorrhage	431	431	I61	Circulatory system	Sweden
Ischaemic Stroke, excluding all haemorrhages	433, 434, 436	4330A, 4331A, 4339A, 4340, 4341, 4349A, 436	I630, I631, I632, I633, I634, I635, I638, I639, I64	Circulatory system	Finland
Ischaemic Stroke, excluding all haemorrhages	433, 434, 436	433A, 433B, 433X, 434A, 434B, 434X, 436	I630, I631, I632, I633, I634, I635, I638, I639, I64	Circulatory system	Sweden

Aortic aneurysm	441, 930	4411, 4412, 4413, 4414, 4415, 4419, 0930	I711, I712, I713, I714, I715, I716, I718, I719	Circulatory system	Finland
DVT of lower extremities	4510	4511A, 4512A	I802, I803	Circulatory system	Finland
DVT of lower extremities	4510	451B, 451C	I802, I803	Circulatory system	Sweden
Other embolism and thrombosis	453	453	I82	Circulatory system	Finland, Sweden
Varicose veins	454	454	I83	Circulatory system	Finland, Sweden
Varicose veins of other sites	45610, 45698	4563, 4564, 4565, 4566, 4568	I86	Circulatory system	Finland
Varicose veins of other sites	45610, 45698	456D, 456E, 456F, 456G, 456W	I86	Circulatory system	Sweden
Nonspecific lymphadenitis	2891, 2892, 2893	2891, 2892	I88	Circulatory system	Finland
Nonspecific lymphadenitis	2891, 2892, 2893	289B, 289C	I88	Circulatory system	Sweden
Acute nasopharyngitis (common cold)	460	460	J00	Respiratory system	Finland, Sweden
Acute sinusitis	461	461	J01	Respiratory system	Finland, Sweden
Acute pharyngitis	462	462	J02	Respiratory system	Finland, Sweden
Other and unspecified tonsillitis	463	463	J03	Respiratory system	Finland, Sweden
Acute laryngitis and tracheitis	46401, 46403, 46409, 50803	4640, 4641, 4642, 4644	J04, J050	Respiratory system	Finland
Acute laryngitis and tracheitis	46401, 46402, 46409, 50800	464A, 464B, 464C, 464E	J04, J050	Respiratory system	Sweden
Acute epiglottitis	46403	464D	J051	Respiratory system	Sweden
Acute upper respiratory infections of multiple and unspecified sites	465	465	J06	Respiratory system	Finland, Sweden
All influenza	470, 472, 473, 474	487	J101, J108, J111, J118	Respiratory system	Finland, Sweden
Viral pneumonia (unknown virus, not influenza)	480	480	J128, J129	Respiratory system	Sweden
Pneumonia due to Streptococcus pneumoniae	48199	481	J13	Respiratory system	Finland, Sweden
Bacterial pneumonia (organism specified)	48199, 482	481, 482, 483	J13, J14, J15, J16, J17	Respiratory system	Finland
Pneumonia due to other infectious organisms, not elsewhere classified	48399	483	J16, J172, J173, J178	Respiratory system	Finland, Sweden
Pneumonia, organism unspecified	48502, 48509, 486	485	J18	Respiratory system	Finland, Sweden
Acute bronchitis	--	4660	J20	Respiratory system	Finland
Acute bronchitis	--	466A	J20	Respiratory system	Sweden
Unspecified acute lower respiratory infection	46699	--	J22	Respiratory system	Finland, Sweden
Vasomotor and allergic rhinitis	507	477	J30	Respiratory system	Finland, Sweden
Chronic rhinitis, nasopharyngitis and pharyngitis	502	472	J31	Respiratory system	Finland

Chronic sinusitis	503	473	J32	Respiratory system	Finland, Sweden
Nasal polyp	505	471	J33	Respiratory system	Finland, Sweden
Diseases of vocal cords and larynx, other diseases of upper respiratory tract, not elsewhere classified	50800, 50801, 50802, 50804, 50805, 50806, 50808, 50809	478	J34, J38, J39	Respiratory system	Finland, Sweden
Deviated nasal septum	50499	470	J342	Respiratory system	Finland, Sweden
Chronic diseases of tonsils and adenoids	500	474	J35	Respiratory system	Finland, Sweden
Peritonsillar abscess	501	475	J36	Respiratory system	Finland, Sweden
Bronchitis, not specified as acute or chronic	49099	490	J40	Respiratory system	Finland, Sweden
Unspecified chronic bronchitis	49109	4919	J42	Respiratory system	Finland
Non-allergic asthma (mode)	--	--	J451	Respiratory system	Finland
Bronchiectasis	51899	494	J47	Respiratory system	Finland
Other interstitial pulmonary diseases	48499, 51701	515, 516	J84	Respiratory system	Finland
Pneumothorax	51299	512	J93	Respiratory system	Finland, Sweden
Other pleural conditions	51101, 51109	511A, 511W, 511X	J94	Respiratory system	Sweden
Other respiratory disorders and diseases	51900, 51901, 51921, 51922, 51925, 51928, 51991, 51992, 51993, 51994, 51998	5180, 5181, 5188, 519	J95, J96, J98	Respiratory system	Finland
Other respiratory disorders and diseases	51900, 51901, 51921, 51922, 51925, 51928, 51991, 51992, 51993, 51994, 51998	518A, 518B, 518W, 519	J95, J96, J98	Respiratory system	Sweden
Oesophagitis	5301	530B	K20	Digestive system	Sweden
Gastro-oesophageal reflux disease	--	5301A	K21	Digestive system	Finland
Gastro-oesophageal reflux disease	--	530B	K21	Digestive system	Sweden
Other diseases of oesophagus	5302, 5309	5305, 5306, 5307, 5308, 5309	K224, K225, K226, K228, K229	Digestive system	Finland
Other diseases of oesophagus	5302, 5309	530F, 530G, 530H, 530W, 530X	K224, K225, K226, K228, K229	Digestive system	Sweden
Barret oesophagus	--	530B	K227	Digestive system	Sweden
Duodenal ulcer	--	532	K26	Digestive system	Finland
Acute gastritis	53500, 53501, 53502	5350	K290, K291	Digestive system	Finland
Acute gastritis	53500, 53501, 53502	535A	K290, K291	Digestive system	Sweden
Alcoholic gastritis	--	5353	K292	Digestive system	Finland
Chronic gastritis	53503	5351, 5354	K293, K294, K295	Digestive system	Finland
Other gastritis (incl. Duodenitis)	53504, 53505, 53506, 53507, 53508, 53509	5352, 5355, 5356	K296, K297, K298, K299	Digestive system	Finland
Other gastritis (incl. Duodenitis)	53504, 53505, 53506, 53507, 53508, 53509	535C, 535F, 535G	K296, K297, K298, K299	Digestive system	Sweden
Functional dyspepsia	5361	5368	K30	Digestive system	Finland
Functional dyspepsia	5361	536W	K30	Digestive system	Sweden
Other diseases of stomach and duodenum	5360, 5369, 537	5361, 5362, 5368X, 5369, 537	K31	Digestive system	Finland
Acute appendicitis	540	540	K35	Digestive system	Finland, Sweden

Other appendicitis	541, 542	541, 542	K36, K37	Digestive system	Finland, Sweden
Other diseases of appendix	543	543	K38	Digestive system	Finland
Inguinal hernia	550	550	K40	Digestive system	Finland, Sweden
Umbilical hernia	5511	5511, 5521, 5531	K42	Digestive system	Finland
Umbilical hernia	5511	551B, 552B, 553B	K42	Digestive system	Sweden
Ventral hernia	5512	5512, 5522, 5532	K43	Digestive system	Finland
Ventral hernia	5512	551C, 552C, 553C	K43	Digestive system	Sweden
Diaphragmatic hernia	5513	551D, 552D, 553D	K44	Digestive system	Sweden
Ulcerative colitis	5631,569	5560A, 5561A, 5562A, 5563A, 5568X	K51	Digestive system	Finland
Ulcerative colitis	5631,569	556	K51	Digestive system	Sweden
Other noninfective gastroenteritis and colitis	562,5639	558, 5564	K52	Digestive system	Finland
Other noninfective gastroenteritis and colitis	562,5639	558,556	K52	Digestive system	Sweden
Paralytic ileus	5601	560B	K560	Digestive system	Sweden
Other or unspecified ileus, impaction, or obstruction	5609	5608X, 5609X	K564, K566, K567	Digestive system	Finland
Other or unspecified ileus, impaction, or obstruction	5609	560W, 560X	K564, K566, K567	Digestive system	Sweden
Intestinal adhesions without obstruction	56095, 56096	5608A	K565	Digestive system	Finland
Intestinal adhesions without obstruction	56095, 56096	560W	K565	Digestive system	Sweden
Irritable bowel syndrome	56419	5641	K58	Digestive system	Finland
Irritable bowel syndrome	56419	564B	K58	Digestive system	Sweden
Other functional intestinal disorders	56400, 56410, 56411, 56490, 56498, 56499	5640, 5642, 5645, 5646, 5647, 5648, 5649	K59	Digestive system	Finland
Other functional intestinal disorders	56400, 56410, 56411, 56490, 56498, 56499	564A, 564C, 564F, 564G, 564H, 564W, 564X	K59	Digestive system	Sweden
Fissure and fistula of anal and rectal regions	565	565	K60	Digestive system	Finland, Sweden
Abscess of anal and rectal regions	566	566	K61	Digestive system	Finland, Sweden
Other diseases of anus and rectum	56906, 56907	5690, 5691, 5692, 5694	K62	Digestive system	Finland
Other diseases of anus and rectum	56906, 56907	569A, 569B, 569C, 569E	K62	Digestive system	Sweden
Other diseases of intestine	56900, 56901, 56902, 56903, 56904, 56905, 56908, 56909	5695, 5696, 5698, 5699	K63	Digestive system	Finland
Other diseases of intestine	56900, 56901, 56902, 56903, 56904, 56905, 56908, 56909	569F, 569G, 569W, 569X	K63	Digestive system	Sweden
Haemorrhoids and perianal venous thrombosis	455	455	K64	Digestive system	Finland, Sweden
Acute peritonitis	567	567	K65	Digestive system	Finland, Sweden

Other diseases of peritoneum	56900, 56901, 56903, 56904, 56905, 56906, 56907, 56908, 56909	568	K66	Digestive system	Finland, Sweden
Alcoholic liver disease	5710	5710, 5711, 5712, 5713	K70	Digestive system	Finland
Other inflammatory liver diseases	57300	5720	K75	Digestive system	Finland
Other diseases of liver	57301, 57302, 57303, 57308, 57309	5718, 5719, 5721, 5722, 5723, 5724, 5728	K76	Digestive system	Finland
Other diseases of liver	57301, 57302, 57303, 57308, 57309	571W, 571X, 572B, 572C, 572D, 572E, 572W	K76	Digestive system	Sweden
Cholelithiasis	574	574	K80	Digestive system	Finland, Sweden
Cholecystitis	57500, 57501, 57502, 57503	5750, 5751	K81	Digestive system	Finland
Cholecystitis	57500, 57501, 57502, 57503	575A, 575B	K81	Digestive system	Sweden
Acute pancreatitis	5770	5770	K85	Digestive system	Finland
Alcohol-induced acute pancreatitis	--	5770D, 5770E	K852	Digestive system	Finland
Alcohol-induced chronic pancreatitis	--	5771C, 5771D	K860	Digestive system	Finland
Coeliac disease	--	5790	K900	Digestive system	Finland
Intestinal malabsorption	2691	5791, 5792, 5794, 5798	K901, K902, K903, K904, K908, K909	Digestive system	Finland
Intestinal malabsorption	2691	579B, 579C, 579E, 579W	K901, K902, K903, K904, K908, K909	Digestive system	Sweden
Impetigo	684, 70708	684	L01	Skin and subcutaneous tissue	Finland
Cutaneous abscess, furuncle, and carbuncle	680	680	L02	Skin and subcutaneous tissue	Finland, Sweden
Cellulitis	681, 682	681, 682	L03	Skin and subcutaneous tissue	Finland, Sweden
Acute lymphadenitis	683	683	L04	Skin and subcutaneous tissue	Finland, Sweden
Pilonidal cyst	--	685	L05	Skin and subcutaneous tissue	Finland, Sweden
Pyoderma	68600	6860	L080	Skin and subcutaneous tissue	Finland
Other and unspecified local infections of skin and subcutaneous tissue	68690, 68691, 68698	6868, 6869	L088, L089	Skin and subcutaneous tissue	Finland
Atopic dermatitis	691	6918A, 6918B, 6918C	L20	Skin and subcutaneous tissue	Finland
Atopic dermatitis	691	691W	L20	Skin and subcutaneous tissue	Sweden
Seborrhoeic dermatitis	690, 70630	690	L21	Skin and subcutaneous tissue	Finland
Allergic contact dermatitis	--	6920B, 6921B, 6922B, 6924B, 6924D, 6924H, 6924L, 6925B, 6925D, 6926B, 6926D	L23	Skin and subcutaneous tissue	Finland
Other contact dermatitis	6921, 6922, 6923, 6924, 6926, 69281	6920A, 6921A, 6922A, 6923, 6924A, 6924C, 6924E, 6924F, 6924G, 6924K, 6924M,	L24, L25	Skin and subcutaneous tissue	Finland

		6924N, 6925A, 6925C, 6925X, 6926A, 6926C, 6926X, 6927, 6928, 6929			
Pruritus	6980, 6981, 6989	698A, 698B, 698W, 698X	L29	Skin and subcutaneous tissue	Sweden
Other and unspecified dermatitis	69282, 69288, 6929	--	L308, L309	Skin and subcutaneous tissue	Finland, Sweden
Psoriasis vulgaris	--	6961A	L400	Skin and subcutaneous tissue	Finland
Psoriasis vulgaris	--	696B	L400	Skin and subcutaneous tissue	Sweden
Other and unspecified psoriasis	69619	6968X	L408, L409	Skin and subcutaneous tissue	Finland
Other and unspecified psoriasis	69619	696W	L408, L409	Skin and subcutaneous tissue	Sweden
Allergic urticaria	--	7080	L500	Skin and subcutaneous tissue	Finland
Allergic urticaria	--	708A	L500	Skin and subcutaneous tissue	Sweden
Other and unspecified urticaria	708	7088, 7089	L508, L509	Skin and subcutaneous tissue	Finland
Other and unspecified urticaria	708	708W, 708X	L508, L509	Skin and subcutaneous tissue	Sweden
Erythema nodosum	69520	6952	L52	Skin and subcutaneous tissue	Finland
Other and unspecified acute skin changes due to ultraviolet radiation	6928	6927B, 6927C, 6927D, 6927E, 6927H, 6927X	L568, L569	Skin and subcutaneous tissue	Finland
Ingrowing nail	70302	7030	L600	Skin and subcutaneous tissue	Finland
Acne vulgaris	70610	7061A	L700	Skin and subcutaneous tissue	Finland
Acne vulgaris	70610	706B	L700	Skin and subcutaneous tissue	Sweden
Rosacea	--	--	L71	Skin and subcutaneous tissue	Sweden
Follicular cysts of skin and subcutaneous tissue	70620	7062A	L72	Skin and subcutaneous tissue	Finland
Follicular cysts of skin and subcutaneous tissue	70620	706C	L72	Skin and subcutaneous tissue	Sweden
Corns and callosities	700	700	L84	Skin and subcutaneous tissue	Finland
Scar conditions and fibrosis of skin	70906,70907	709C	L905	Skin and subcutaneous tissue	Sweden
Hypertrophic scar	70130	7014B	L910	Skin and subcutaneous tissue	Finland
Hypertrophic scar	70130	701E	L910	Skin and subcutaneous tissue	Sweden
Other and unspecified disorders of skin and subcutaneous tissue	70198, 70908, 70909	7019X, 7098C, 7098X, 7099	L988, L989	Skin and subcutaneous tissue	Finland
Pyogenic arthritis	710	7110, 7119	M00, M01	Musculoskeletal system	Finland
Pyogenic arthritis	710	711A, 711X	M00, M01	Musculoskeletal system	Sweden
Reactive arthropathies	71490	7111, 7115, 7118, 713	M02, M03	Musculoskeletal system	Finland

Reactive arthropathies	71490	711B, 711F, 711W, 713	M02, M03	Musculoskeletal system	Sweden
Polyarthropathies	--	--	M05, M06, M07, M08, M09, M10, M11, M12, M13, M14	Musculoskeletal system	Finland, Sweden
Other/unspecified seropositive rheumatoid arthritis	--	7140A	M058, M059	Musculoskeletal system	Finland
Seronegative rheumatoid arthritis	--	7140B	M060	Musculoskeletal system	Finland
Juvenile idiopathic arthritis	7120	7143A	M080	Musculoskeletal system	Finland
Juvenile idiopathic arthritis	7120	714D	M080	Musculoskeletal system	Sweden
Other juvenile arthritis	--	7143B, 7143C, 7143D, 7143X	M081, M082, M083, M084, M088, M089, M09	Musculoskeletal system	Finland
Monoarthritis, not elsewhere classified	71100, 71101, 71102, 71103, 71104, 71105, 71106	7166	M131	Musculoskeletal system	Finland
Monoarthritis, not elsewhere classified	71100, 71101, 71102, 71103, 71104, 71105, 71106	716G	M131	Musculoskeletal system	Sweden
Other specific/unspecified arthritis	71108, 71109, 71498	7169	M138, M139	Musculoskeletal system	Finland
Coxarthrosis	71300	715B, 715C	M16	Musculoskeletal system	Sweden
Gonarthrosis	71301	7151F, 7152F	M17	Musculoskeletal system	Finland
Gonarthrosis	71301	715B, 715C	M17	Musculoskeletal system	Sweden
Other arthrosis	71302, 71308, 71309, 71320	7151A, 7151B, 7151C, 7151D, 7151G, 7151H, 7151K, 7151X, 7152A, 7152B, 7152C, 7152D, 7152G, 7152H, 7152K, 7152X	M18, M19	Musculoskeletal system	Finland
Other arthrosis	71302, 71308, 71309, 71320	715B, 715C	M18, M19	Musculoskeletal system	Sweden
Other joint disorders	--	--	M20, M21, M22, M23, M24, M25	Musculoskeletal system	Finland, Sweden
Hallux valgus (acquired)	737, 73099	7350, 7271	M201	Musculoskeletal system	Finland
Hallux valgus (acquired)	737, 73099	735A, 727B	M201	Musculoskeletal system	Sweden
Flat foot [pes planus] (acquired)	736	734	M214	Musculoskeletal system	Finland
Other specified acquired deformities of limbs	73808, 73809	7368, 7369	M218, M219	Musculoskeletal system	Finland
Other disorders of patella	--	7177	M222, M223, M224, M228, M229	Musculoskeletal system	Finland
Other disorders of patella	--	717H	M222, M223, M224, M228, M229	Musculoskeletal system	Sweden
Meniscus derangement	--	7170, 7174, 7175	M230, M231, M232, M233	Musculoskeletal system	Finland
Meniscus derangement	--	717A, 717E, 717F	M230, M231, M232, M233	Musculoskeletal system	Sweden
Internal derangement of knee	72410	7176, 7178, 7179	M234, M235, M236, M238, M239	Musculoskeletal system	Finland

Internal derangement of knee	72410	717G, 717W, 717X	M234, M235, M236, M238, M239	Musculoskeletal system	Sweden
Loose body in joint	72901	7181	M240	Musculoskeletal system	Finland
Loose body in joint	72901	718B	M240	Musculoskeletal system	Sweden
Other articular cartilage disorders	7249	7180	M241	Musculoskeletal system	Finland
Other articular cartilage disorders	7249	718A	M241	Musculoskeletal system	Sweden
Other specific joint derangements/joint disorders	72902, 72903	7188, 7189	M242, M248, M249, M25	Musculoskeletal system	Finland
Other specific joint derangements/joint disorders	72902, 72903	718W, 718X	M242, M248, M249, M25	Musculoskeletal system	Sweden
Pathological/recurrent dislocation and subluxation of joint, not elsewhere classified	72904	7182	M243	Musculoskeletal system	Finland
Pathological/recurrent dislocation and subluxation of joint, not elsewhere classified	72904	718C	M243	Musculoskeletal system	Sweden
Recurrent dislocation and subluxation of joint	--	7183	M244	Musculoskeletal system	Finland
Recurrent dislocation and subluxation of joint	--	718D	M244	Musculoskeletal system	Sweden
Systemic lupus erythematosus	7431	7100	M32	Musculoskeletal system	Finland
Systemic lupus erythematosus	7431	710A	M32	Musculoskeletal system	Sweden
Other specified/unspecified systemic involvement of connective tissue	73491, 73498, 73499	710W, 710X	M358, M359	Musculoskeletal system	Sweden
Torticollis	7172	7235	M436	Musculoskeletal system	Finland
Other specified/unspecified deforming dorsopathies	735	7328, 7329, 7378, 7379	M438, M439	Musculoskeletal system	Finland
Other specified/unspecified deforming dorsopathies	735	732W, 732X, 737W, 737X	M438, M439	Musculoskeletal system	Sweden
Ankylosing spondylitis	7124	7200	M45	Musculoskeletal system	Finland
Ankylosing spondylitis	7124	720A	M45	Musculoskeletal system	Sweden
Spondyloarthritis	7124, 7131, 72699	720	M45, M46	Musculoskeletal system	Finland
Spondylopathies	--	--	M45, M46, M47, M48, M49	Musculoskeletal system	Finland, Sweden
Cervical disc disorders	7250	7220, 7224, 7227, 7228A	M50	Musculoskeletal system	Finland
Other intervertebral disc disorders	72510, 72519, 72588, 72599	7221, 7223, 7225, 7226, 7229	M51	Musculoskeletal system	Finland
Other intervertebral disc disorders	72510, 72519, 72588, 72599	722B, 722D, 722F, 722G, 722X	M51	Musculoskeletal system	Sweden
Radiculopathy	7283, 7288	7234, 7244	M541	Musculoskeletal system	Finland
Radiculopathy	7283, 7288	723E, 724E	M541	Musculoskeletal system	Sweden

Cervicalgia	7289	7231	M542	Musculoskeletal system	Finland
Cervicalgia	7289	723B	M542	Musculoskeletal system	Sweden
Sciatica, lumbago	7170	--	M543, M544	Musculoskeletal system	Finland, Sweden
Low back pain	72870	7242	M545	Musculoskeletal system	Finland
Low back pain	72870	724C	M545	Musculoskeletal system	Sweden
Pain in thoracic spine	7285	7241	M546	Musculoskeletal system	Finland
Other/unspecified dorsalgia	7289	7245	M548, M549	Musculoskeletal system	Finland
Other/unspecified dorsalgia	7289	724F	M548, M549	Musculoskeletal system	Sweden
Other specified disorders of muscle	73390	7288,7289	M628, M629	Musculoskeletal system	Finland
Disorders of synovium and tendon	--	--	M65, M66, M67, M68	Musculoskeletal system	Finland, Sweden
Radial styloid tenosynovitis [de Quervain]	--	727A	M654	Musculoskeletal system	Sweden
Other/unspecified synovitis and tenosynovitis	73100, 73101, 73102, 73103	7270B, 7270C, 7270X	M658, M659	Musculoskeletal system	Finland
Other/unspecified synovitis and tenosynovitis	73100, 73101, 73102, 73103	727A	M658, M659	Musculoskeletal system	Sweden
Spontaneous rupture of synovium and tendon	--	7276	M66	Musculoskeletal system	Finland
Ganglion	--	7274	M674	Musculoskeletal system	Finland
Ganglion	--	727E	M674	Musculoskeletal system	Sweden
Prepatellar bursitis	--	7266E	M704	Musculoskeletal system	Finland
Other bursal cyst	--	7274	M713	Musculoskeletal system	Finland
Other bursitis, not elsewhere classified	73105, 73109	7273	M715	Musculoskeletal system	Finland
Other bursitis, not elsewhere classified	73105, 73109	727D	M715	Musculoskeletal system	Sweden
Rotator cuff syndrome	--	7261X	M751	Musculoskeletal system	Finland
Achilles tendinitis	--	7267A	M766	Musculoskeletal system	Finland
Other/unspecified enthesopathies, not elsewhere classified	73105, 73109	7268, 7269	M778, M779	Musculoskeletal system	Finland
Other/unspecified enthesopathies, not elsewhere classified	73105, 73109	726W, 726X	M778, M779	Musculoskeletal system	Sweden
Rheumatism, unspecified	71899	7290	M790	Musculoskeletal system	Finland
Myalgia	--	729B	M791	Musculoskeletal system	Sweden
Pain in limb	--	--	M796	Musculoskeletal system	Finland, Sweden
Other specified/unspecified soft tissue disorders	71798	729W, 729X	M798, M799	Musculoskeletal system	Sweden
Osteomyelitis	720	7300, 7301, 7302, 7303, 7309	M86	Musculoskeletal system	Finland
Osteomyelitis	720	730A, 730B, 730C, 730D, 730X	M86	Musculoskeletal system	Sweden
Other specified/unspecified disorders of bone/cartilage	72398, 72399	7339	M898, M899, M948, M949	Musculoskeletal system	Finland

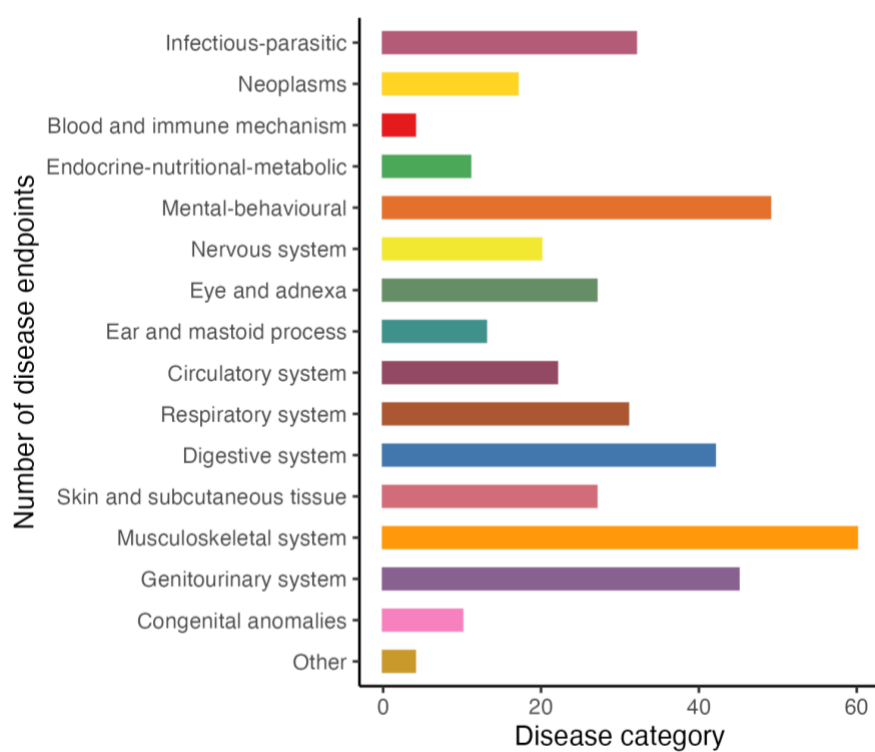
Other specified/unspecified disorders of bone/cartilage	72398, 72399	733X	M898, M899, M948, M949	Musculoskeletal system	Sweden
Juvenile osteochondrosis	72209, 72228, 72229	7321X, 7323, 7324, 7325, 7326	M91, M92	Musculoskeletal system	Finland
Other osteochondropathies	72200, 72210, 72211, 72219, 72220, 72221, 72222, 72223, 72288, 72299	7322, 7327, 7328, 7329	M93	Musculoskeletal system	Finland
Other osteochondropathies	72200, 72210, 72211, 72219, 72220, 72221, 72222, 72223, 72288, 72299	732C, 732H, 732W, 732X	M93	Musculoskeletal system	Sweden
Other acquired deformities of musculoskeletal system and connective tissue	73808, 73809	738	M95	Musculoskeletal system	Finland, Sweden
Acute nephritic syndrome	580	5800, 5808, 5809	N00	Genitourinary system	Finland
Acute nephritic syndrome	580	580A, 580W, 580X	N00	Genitourinary system	Sweden
Chronic nephritic syndrome	582	582	N03	Genitourinary system	Finland, Sweden
Unspecified nephritic syndrome	583	583	N05	Genitourinary system	Finland
Acute tubulo-interstitial nephritis	5901	5901	N10	Genitourinary system	Finland
Acute tubulo-interstitial nephritis	5901	590B	N10	Genitourinary system	Sweden
Chronic tubulo-interstitial nephritis	5900	5900	N11	Genitourinary system	Finland
Chronic tubulo-interstitial nephritis	5900	590A	N11	Genitourinary system	Sweden
Tubulo-interstitial nephritis, not specified as acute or chronic	5909	5909	N12	Genitourinary system	Finland
Hydronephrosis	591	591	N130, N131, N132, N133	Genitourinary system	Finland, Sweden
Other obstructive and reflux uropathy	5933, 5934, 5935	5933, 5934, 5935, 5937	N134, N135, N136, N137, N138, N139	Genitourinary system	Finland
Other obstructive and reflux uropathy	5933, 5934, 5935	593D, 593E, 593F, 593H	N134, N135, N136, N137, N138, N139	Genitourinary system	Sweden
Other renal tubulo-interstitial diseases	5902, 5909	5902, 5909	N15	Genitourinary system	Finland
Calculus of kidney and ureter	592	592	N20	Genitourinary system	Finland, Sweden
Other specified disorders of kidney and ureter	59322	5930, 5931, 5938A, 5938C, 5938X	N280, N288, N289	Genitourinary system	Finland
Cystitis	595	595	N30	Genitourinary system	Finland, Sweden
Other disorders of bladder	596	596F, 596W, 596X	N32	Genitourinary system	Sweden
Urethritis and urethral syndrome	597	--	N34	Genitourinary system	Finland, Sweden
Urethral stricture	598	--	N35	Genitourinary system	Finland, Sweden
Other disorders of urethra and urinary system	599	5938B, 5965C, 5965D, 5965E, 5965F, 5965X, 6256	N36, N39	Genitourinary system	Finland

Other disorders of urethra and urinary system	599	593W, 596F, 599, 625G	N36, N39	Genitourinary system	Sweden
Inflammatory diseases of prostate (prostatitis)	601	601	N41	Genitourinary system	Finland, Sweden
Hydrocele	603	603	N430, N431, N432, N433	Genitourinary system	Finland, Sweden
Spermatocele	6076	6081	N434	Genitourinary system	Finland
Torsion of testis	6077	6082	N44	Genitourinary system	Finland
Torsion of testis	6077	608C	N44	Genitourinary system	Sweden
Orchitis and epididymitis	604	604	N45	Genitourinary system	Finland, Sweden
Redundant prepuce, phimosis and paraphimosis	605	605	N47	Genitourinary system	Finland, Sweden
Other disorders of penis	6070, 6071, 6072, 6073, 60790	6070A, 6071A, 6071B, 6071X, 6072A, 6073A, 6078A, 6078X, 6079X	N480, N481, N482, N483, N485, N486, N488, N489	Genitourinary system	Finland
Other disorders of penis	6070, 6071, 6072, 6073, 60790	607A, 607B, 607C, 607D, 607W, 607X	N480, N481, N482, N483, N485, N486, N488, N489	Genitourinary system	Sweden
Other disorders of male genital organs	60780, 60791, 60798	6083, 6088	N50	Genitourinary system	Finland
Other disorders of male genital organs	60780, 60791, 60798	608D, 608W	N50	Genitourinary system	Sweden
Benign mammary dysplasia	610	610	N60	Genitourinary system	Finland, Sweden
Hypertrophy of breast	6111	6111	N62	Genitourinary system	Finland
Hypertrophy of breast	6111	611B	N62	Genitourinary system	Sweden
Unspecified lump in breast	--	6117B	N63	Genitourinary system	Finland
Other disorders of breast	6112, 6119	6112, 6113, 6114, 6115, 6116, 6117A, 6117C, 6117D, 6117E, 6118, 6119	N64	Genitourinary system	Finland
Other disorders of breast	6112, 6119	611C, 611D, 611E, 611F, 611G, 611H, 611W, 611X	N64	Genitourinary system	Sweden
Salpingitis and oophoritis	612, 613, 614	6140, 6141, 6142	N70	Genitourinary system	Finland
Salpingitis and oophoritis	612, 613, 614	614A, 614B, 614C	N70	Genitourinary system	Sweden
Cyst of Bartholin Gland	--	6162	N750	Genitourinary system	Finland
Other and unspecified disease of Bartholin gland	62212, 62213	--	N758, N759	Genitourinary system	Finland
Vaginitis/vulvovaginitis/vulvitis/abscess of vulva	6221	6161	N760, N761, N762, N763, N764	Genitourinary system	Finland
Vaginitis/vulvovaginitis/vulvitis/abscess of vulva	6221	616B	N760, N761, N762, N763, N764	Genitourinary system	Sweden
Other inflammation of vagina/vulva	62218, 62219	6168, 6169	N768	Genitourinary system	Finland
Other inflammation of vagina/vulva	62218, 62219	616W, 616X	N768	Genitourinary system	Sweden

Vulvovaginal ulceration/inflammation in other diseases	--	--	N77	Genitourinary system	Finland
Torsion of ovary, ovarian pedicle, and fallopian tube	6150	6205	N835	Genitourinary system	Finland
Torsion of ovary, ovarian pedicle, and fallopian tube	6150	620F	N835	Genitourinary system	Sweden
Polyp of the female genital tract	62520	6210, 6227, 6237, 6246	N84	Genitourinary system	Finland
Polyp of the female genital tract	62520	621A, 622H, 623H, 624G	N84	Genitourinary system	Sweden
Erosion and ectropion of cervix uteri	62191	6220A	N86	Genitourinary system	Finland
Erosion and ectropion of cervix uteri	62191	622A	N86	Genitourinary system	Sweden
Other noninflammatory disorders of cervix uteri	62191	6222, 6223, 6224, 6225, 6226, 6228, 6229	N88	Genitourinary system	Finland
Other noninflammatory disorders of cervix uteri	62191	622C, 622D, 622E, 622F, 622G, 622W, 622X	N88	Genitourinary system	Sweden
Other noninflammatory disorders of vagina	6200, 6210, 6293, 62950, 6297	623	N89	Genitourinary system	Finland, Sweden
Other noninflammatory disorders of vulva and perineum	62911, 62920	624	N90	Genitourinary system	Finland
Amenorrhoea	6260	6260	N910, N911, N912	Genitourinary system	Finland
Amenorrhoea	6260	626A	N910, N911, N912	Genitourinary system	Sweden
Oligomenorrhoea	6261	6261	N913, N914, N915	Genitourinary system	Finland
Oligomenorrhoea	6261	626B	N913, N914, N915	Genitourinary system	Sweden
Excessive, frequent, and irregular menstruation	6262, 6264	6262, 6263, 6264, 6265, 6266, 6270	N92	Genitourinary system	Finland
Excessive, frequent, and irregular menstruation	6262,6264	626C, 626D, 626E, 626F, 626G, 627A	N92	Genitourinary system	Sweden
Other abnormal uterine and vaginal bleeding	6265, 6266, 6267, 6269	6267, 6268, 6269	N93	Genitourinary system	Finland
Other abnormal uterine and vaginal bleeding	6265, 6266, 6267, 6269	626H, 626W, 626X	N93	Genitourinary system	Sweden
Pain and other conditions associated with female genital organs and menstrual cycle	6263	6250, 6251, 6252, 6253, 6254, 6255, 6258, 6259	N94	Genitourinary system	Finland
Pain and other conditions associated with female genital organs and menstrual cycle	6263	625A, 625B, 625C, 625D, 625E, 625F, 625W, 625X	N94	Genitourinary system	Sweden
Congenital hydrocephalus	742	7423	Q03	Congenital anomalies	Finland
Congenital malformations of eye, ear, face, and neck	744, 745	743, 744	Q10, Q11, Q12, Q13, Q14, Q15, Q16, Q17, Q18	Congenital anomalies	Finland

Congenital anomalies of heart	746	745,746	Q20, Q21, Q22, Q23, Q24	Congenital anomalies	Finland
Congenital malformations of the circulatory system	746, 747	745, 746, 747	Q20, Q21, Q22, Q23, Q24, Q25, Q26, Q27, Q28	Congenital anomalies	Finland
Congenital anomalies of digestive system	749, 750, 751	749, 750, 751	Q35, Q36, Q37, Q38, Q39, Q40, Q41, Q42, Q43, Q44, Q45	Congenital anomalies	Finland
Other congenital malformations of the digestive system	750, 751	750, 751	Q38, Q39, Q40, Q41, Q42, Q43, Q44, Q45	Congenital anomalies	Finland
Congenital anomalies of genital organs	752	752	Q50, Q51, Q52, Q53, Q54, Q55, Q56	Congenital anomalies	Finland
Congenital anomalies of urinary system	753	753	Q60, Q61, Q62, Q63, Q64	Congenital anomalies	Finland
Congenital anomalies of musculoskeletal system	754, 755, 756	754, 755, 756	Q65, Q66, Q67, Q68, Q69, Q70, Q71, Q72, Q73, Q74, Q75, Q76, Q77, Q78, Q79	Congenital anomalies	Finland
Childhood allergy (age < 16)	--	6918, 477	J450, L20, J301, J302, J303, J304, L236, J3019	Other	Finland
Retention of urine	7861	7882	R33	Other	Finland
Fracture of femur	820	820	S72	Other	Finland
Toxic effect of ethanol	9800	9800	T510	Other	Finland

Figure S2. Number of disease endpoints defined for each disease category.



3.2. Diseases not included due to virtually complete lack of children

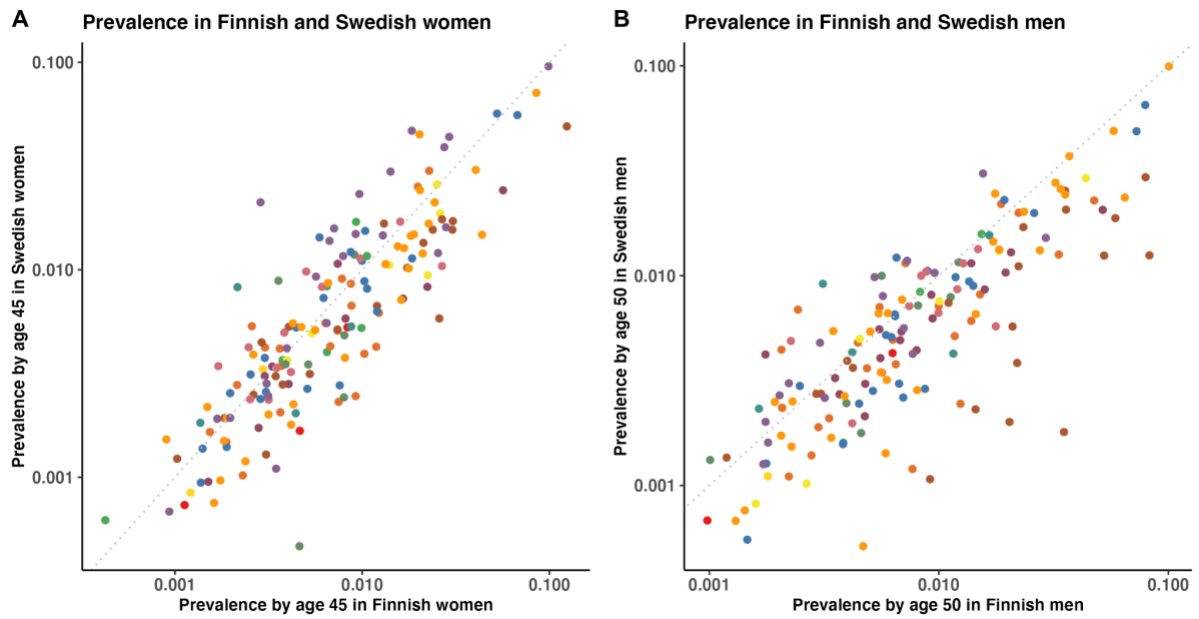
We excluded 11 rare diseases from the analysis for both women and men, since receiving diagnosis of these diseases resulted in an almost complete lack of children in the observational period (**table S2**). Specifically, we filtered out diseases that had more than 30 individuals affected from the sibling-based design but less than 5 of affected individuals had live-born children at the end of their reproductive lifespan (up to 45 years old for women, 50 for men).

Table S2: Diseases not included in the analysis due to resulting in an almost complete lack of children.

Disease	ICD-8	ICD-9	ICD-10	Category	Population
Lymphoid leukaemia	204	204	C91	Neoplasms	Finland, Sweden
Myeloid leukaemia	205	205	C92	Neoplasms	Finland, Sweden
Moderate intellectual disability	312	3180	F71	Mental-behavioural	Finland
Moderate intellectual disability	312	318A	F71	Mental-behavioural	Sweden
Severe intellectual disability	313	3181	F72	Mental-behavioural	Finland
Severe intellectual disability	313	318B	F72	Mental-behavioural	Sweden
Profound intellectual disability	314	3182	F73	Mental-behavioural	Finland
Profound intellectual disability	314	318C	F73	Mental-behavioural	Sweden
Other and unspecified intellectual disability	315	3199	F78, F79	Mental-behavioural	Finland
Other and unspecified intellectual disability	315	319	F78, F79	Mental-behavioural	Sweden
Muscular dystrophy	33030,33090	3591	G710	Nervous system	Finland
Muscular dystrophy	33030,33090	359B	G710	Nervous system	Sweden
Hemiplegia	34400	342	G81	Nervous system	Finland, Sweden
Other and unspecified paralytic syndromes	34408,34409	344	G838, G839	Nervous system	Finland, Sweden
Disorders of brain, other and unspecified	34798,34799	3488,3489	G938, G939, G948	Nervous system	Finland
Disorders of brain, other and unspecified	34798,34799	348W,348X	G938, G939, G948	Nervous system	Sweden
Congenital hydrocephalus	742	7423	Q03	Congenital anomalies	Finland

3.3. Disease prevalence from Finland and Sweden

Figure S3: Prevalence by age 45 in women (Panel A) and 50 in men (Panel B) for 213 disease diagnoses that were available in both Finland and Sweden. Each dot represents a disease diagnosis. Colors are assigned by disease categories.



4. Relationship of disease diagnoses with childlessness

4.1. Effects of each disease diagnosis

We examined the relationship of 403 disease diagnoses with childlessness by age 45 in women and 50 in men in 71,524 pairs of full-sisters (35,544 in Finland and 35,980 in Sweden) and 77,622 full-brothers (38,928 in Finland and 38,694 in Sweden) who were discordant on childlessness, using a matched case-control design. Only sibling pairs who were also discordant on the disease status were used for the estimation of the disease effect. We therefore reported the number of sibling pairs discordant on both outcome and exposure for each country (**table S3**). Bonferroni correction was used to control for the familywise error rate.

For each disease diagnosis, we used a fixed-effect inverse-variance weighting method to aggregate summary statistics from two countries and tested for heterogeneity. Overall, the effects were highly consistent between Finnish and Swedish data and, after multiple testing corrections, only two diseases (acute alcohol intoxication and epilepsy) showed significantly heterogeneous effects between the two countries.

There were 74 disease diagnoses that were significantly associated with childlessness ($P < 1.5 \times 10^{-4}$, after multiple-testing correction) in at least one sex, with 33 disease diagnoses shared among women and men. Results can also be explored on the interactive online dashboard available at <https://dsgelrs.shinyapps.io/DiseaseSpecificLRS/>.

Table S3: Relationship of disease diagnoses with childlessness by age 45 in women and 50 in men.

(**Table S3** is too large therefore see sheet “S3_EffectOnChildlessness” from “SUBMIT_TableS3_S5_S7_S12_DiseaseSpecificChildlessness.xlsx”)

4.2. Effects by disease category

To quantify the average disease effects on childlessness for each disease category, we meta-analyzed effects for diseases of the same category for each sex using a random-effect model to account for heterogeneity across different diseases. Among all 16 disease categories, on average, mental-behavioral, congenital anomalies, and endocrine-nutritional-metabolic disorders had the strongest association (**table S4**).

Table S4: Relationship of disease diagnoses with childlessness by age 45 in women and 50 in men by disease category.

Category	Sex	OR	OR [95% CI lower]	OR [95% CI upper]	P value	P value from heterogeneity test
Infectious-parasitic	Women	1.07	0.97	1.18	0.20	1.62E-03
Infectious-parasitic	Men	0.97	0.90	1.05	0.51	0.43
Neoplasms	Women	1.16	0.77	1.75	0.47	7.14E-09
Neoplasms	Men	1.21	0.79	1.83	0.38	2.03E-07
Blood and immune mechanism	Women	1.24	0.95	1.61	0.11	0.18
Blood and immune mechanism	Men	1.09	0.83	1.42	0.54	0.7
Endocrine-nutritional-metabolic	Women	1.39	1.06	1.84	0.02	1.35E-10
Endocrine-nutritional-metabolic	Men	2.02	1.59	2.57	7.37E-09	0.08
Mental-behavioural	Women	3.08	2.55	3.72	1.25E-31	4.50E-71
Mental-behavioural	Men	3.22	2.61	3.97	6.79E-28	7.86E-128
Nervous system	Women	1.82	1.08	3.08	0.03	1.82E-43
Nervous system	Men	1.62	1.03	2.56	0.04	2.67E-45
Eye and adnexa	Women	1.31	1.12	1.52	7.01E-04	0.01
Eye and adnexa	Men	1.53	1.24	1.89	6.16E-05	7.75E-14
Ear and mastoid process	Women	1.37	1.16	1.61	1.43E-04	0.12
Ear and mastoid process	Men	1.13	0.96	1.34	0.13	0.01
Circulatory system	Women	1.70	1.32	2.19	3.35E-05	1.17E-16
Circulatory system	Men	1.37	1.11	1.69	3.36E-03	3.34E-16
Respiratory system	Women	1.12	1.02	1.24	0.02	2.06E-23
Respiratory system	Men	0.97	0.91	1.02	0.23	1.71E-11
Digestive system	Women	1.10	1.00	1.21	0.05	8.33E-08
Digestive system	Men	1.26	1.13	1.40	1.91E-05	3.53E-19
Skin and subcutaneous tissue	Women	1.01	0.90	1.13	0.84	0.02
Skin and subcutaneous tissue	Men	1.04	0.98	1.10	0.23	0.66
Musculoskeletal system	Women	1.12	1.01	1.25	0.03	1.86E-16
Musculoskeletal system	Men	0.88	0.82	0.94	2.67E-04	2.88E-08
Genitourinary system	Women	0.97	0.88	1.07	0.52	1.58E-11
Genitourinary system	Men	1.10	1.00	1.21	0.05	2.86E-03
Congenital anomalies	Women	3.55	2.57	4.89	1.15E-14	0.01
Congenital anomalies	Men	1.83	1.34	2.50	1.62E-04	0.01
Other	Women	1.25	0.85	1.84	0.25	0.02
Other	Men	1.10	0.91	1.33	0.32	0.21

4.3. Age-of-onset-dependent effects

We hypothesized that the age when the disease was first diagnosed, a proxy for the age of onset, would influence the chances of being childless by either capturing disease severity or directly impacting factors underlying individuals' reproductive trajectory. Therefore, for disease diagnoses that were significantly associated with childlessness, we assessed whether there were any age-of-onset-dependent effects by considering the age of onset (8 groups <=15, 16-20, 21-25, 26-30, 31-35, 36-40, 41-45, or unaffected for both sexes and an additional group (46-50) for men) as fixed effects in conditional logistic regression. The analysis was performed separately for each disease (**table S5**) in 71,524 full-sister and 77,622 full-brother pairs who were discordant on childlessness. We then meta-analyzed disease effects for each age of onset group using a random-effect model (**table S6**).

Table S5: Age-of-onset-dependent effects for each disease diagnosis that significantly increased childlessness. (**Table S5** is too large therefore see sheet "S5_AgeOnsetEffects" from "SUBMIT_TableS3_S5_S7_S12_DiseaseSpecificChildlessness.xlsx"))

Table S6: Age-of-onset-dependent effects across all disease diagnoses that significantly increased childlessness.

Sex	Age onset group	OR	OR [95% CI lower]	OR [95% CI upper]	P value	P value from heterogeneity test
Women	<=15	1.89	1.55	2.31	5.59E-10	1.24E-15
Women	16-20	2.53	1.98	3.25	2.05E-13	2.78E-21
Women	21-25	3.12	2.53	3.84	1.02E-26	1.88E-15
Women	26-30	2.68	2.12	3.38	1.18E-16	1.38E-08
Women	31-35	1.74	1.33	2.29	6.35E-05	3.08E-04
Women	36-40	1.24	0.55	2.80	0.60	0.02
Men	<=15	2.27	1.86	2.77	5.89E-16	2.18E-05
Men	16-20	2.38	1.82	3.12	2.61E-10	4.24E-19
Men	21-25	2.81	2.20	3.60	2.38E-16	9.81E-50
Men	26-30	3.07	2.45	3.85	4.07E-22	1.34E-09
Men	31-35	2.57	1.99	3.32	5.82E-13	2.64E-03
Men	36-40	1.76	1.13	2.75	0.01	0.06
Men	41-45	1.03	0.49	2.17	0.93	0.35

5. Number of unborn children and completed total fertility rate reduction related to disease diagnoses

To calculate the total fertility deficit related to diseases, for the studied cohort, the total number of unborn children per 100,000 people related to a disease in sex i ($N_{prevented}$), both directly and indirectly, was calculated using the following equation:

$$N_{prevented} = N \times E(prevalence^{sex_i}) \times \Delta p^{sex_i}(childlessness) \times E(parity^{sex_i}) \quad (1)$$

where $E(prevalence^{sex_i})$ is the expected disease prevalence (cumulative incidence rate - CIR) in sex i , $\Delta p^{sex_i}(childlessness)$ is the change in the probability of remaining childless due to a disease diagnosis, and $E(parity^{sex_i})$ is the expected parity in sex i if unaffected (approximated by the average parity in the general population). The $\Delta p^{sex_i}(childlessness)$ was calculated using the following equation:

$$\Delta p^{sex_i}(childlessness) = (RR^{sex_i} - 1) \times p^{sex_i}(childlessness) \quad (2)$$

where RR^{sex_i} is the risk ratio of childlessness in sex i estimated from the sibling-based analysis and $p^{sex_i}(childlessness)$ is the probability of remaining childless in sex i if unaffected (approximated by the proportion of childless individuals among the general population). Our approach assumes that the disease only impacts childlessness but not parity, which is supported by our observations (**table S7**).

For the studied cohort, we also calculated the total fertility rate (TFR) for each sex as the sum of disease ($fr_{affected}^{age_j}$) and non-disease age-specific fertility rates ($fr_{unaffected}^{age_j}$) using the following equation:

$$TFR = \Sigma fr_{affected}^{age_j} + \Sigma fr_{unaffected}^{age_j} = \Sigma (c_{affected}^{age_j} / N^{age_j}) + \Sigma (c_{unaffected}^{age_j} / N^{age_j}) \quad (3)$$

where $c_{affected}^{age_j}$ is the total number of children for individuals affected by at least one disease (restricting to disease diagnoses that significantly increased childlessness) at age bracket j , $c_{unaffected}^{age_j}$ is the total number of children for unaffected individuals, and N_{age_j} is the total number of individuals at the age bracket j .

We presented the reduction of completed TFR due to disease diagnoses as the difference in the TFR between unaffected ($TFR_{unaffected}$) and affected individuals ($TFR_{affected}$), which can be expressed as the following equation:

$$TFR_{unaffected} - TFR_{affected} = \Sigma (c_{unaffected}^{age_j} / n_{unaffected}^{age_j}) - \Sigma (c_{affected}^{age_j} / n_{affected}^{age_j}) \quad (4)$$

where $n_{unaffected}^{age_j}$ is the number of unaffected individuals at the age bracket j , and $n_{affected}^{age_j}$ is the number of affected individuals at the age bracket j .

Table S7: Relationship of disease diagnoses with parity among women (by age 45) and men (by age 50) with biological children.

(**Table S7** is too large therefore see sheet “S7_EffectOnParity” from “SUBMIT_TableS3_S5_S7_S12_DiseaseSpecificChildlessness.xlsx”)

Table S8: Number of children unborn per 100,000 people related to disease diagnoses.

Disease	Sex	Category	N children	Lower 95% CI	Upper 95% CI
Schizophrenia	Women	Mental-behavioural	612	550	670
Acute and transient psychotic disorders	Women	Mental-behavioural	389	314	462
Mood disorders	Women	Mental-behavioural	389	313	470
Epilepsy	Women	Nervous system	381	328	434
Other and unspecified nonorganic psychotic disorders	Women	Mental-behavioural	375	323	423
Cerebral palsy	Women	Nervous system	339	269	396
Anxiety disorders	Women	Mental-behavioural	257	192	325
Mild intellectual disability	Women	Mental-behavioural	234	190	267
Type 1 diabetes	Women	Endocrine-nutritional-metabolic	198	159	240
Other specified and unspecified personality disorders	Women	Mental-behavioural	150	117	183
Persistent mood disorders	Women	Mental-behavioural	121	91	152
Bipolar affective disorders	Women	Mental-behavioural	112	85	142
Emotionally unstable personality disorder	Women	Mental-behavioural	112	83	142
Other neurotic disorders	Women	Mental-behavioural	108	80	137
Congenital malformations of the circulatory system	Women	Congenital anomalies	107	67	146
Schizoaffective disorder	Women	Mental-behavioural	103	76	127
Persistent delusional disorders	Women	Mental-behavioural	97	59	126
Other mental disorders due to brain damage and dysfunction and to physical disease	Women	Mental-behavioural	94	56	120
Pneumonia, organism unspecified	Women	Respiratory system	91	58	124
Congenital anomalies of heart	Women	Congenital anomalies	85	49	120
Other anxiety disorders	Women	Mental-behavioural	77	53	102
Anorexia (Inc. Atypical)	Women	Mental-behavioural	75	52	101
Juvenile idiopathic arthritis	Women	Musculoskeletal system	72	50	95
Malignant neoplasm of brain	Women	Neoplasms	61	32	88
Alcohol dependence	Women	Mental-behavioural	57	37	80
Acute upper respiratory infections of multiple and unspecified sites	Women	Respiratory system	55	29	84
Other juvenile arthritis	Women	Musculoskeletal system	54	27	81
Anxious personality disorder	Women	Mental-behavioural	53	27	78
Congenital anomalies of musculoskeletal system	Women	Congenital anomalies	50	24	79
Type 2 diabetes	Women	Endocrine-nutritional-metabolic	49	23	77
Mental and behavioural disorders due to opioids	Women	Mental-behavioural	48	23	74
Obesity, other/unspecified	Women	Endocrine-nutritional-metabolic	47	27	69
Congenital anomalies of nervous system	Women	Congenital anomalies	47	21	71
Congenital anomalies of digestive system	Women	Congenital anomalies	43	19	67
Other reaction to severe stress, and adjustment disorders	Women	Mental-behavioural	42	22	64
Other cataract	Women	Eye and adnexa	42	25	59

Other septicaemia	Women	Infectious-parasitic	40	17	67
Other and unspecified mood [affective] disorders	Women	Mental-behavioural	40	18	65
Myocarditis	Women	Circulatory system	38	21	56
Acute alcohol intoxication	Women	Mental-behavioural	37	21	56
Mental and behavioural disorders due to sedatives or hypnotics	Women	Mental-behavioural	31	16	47
Other or unspecified ileus, impaction, or obstruction	Women	Digestive system	29	15	46
Chronic tubulo-interstitial nephritis	Women	Genitourinary system	29	14	47
Hypertension, essential	Women	Circulatory system	28	13	45
Other arrhythmias	Women	Circulatory system	28	14	44
Mental and behavioural disorders due to multiple drug use and use of other psychoactive substances	Women	Mental-behavioural	26	13	41
Obsessive-compulsive disorder	Women	Mental-behavioural	26	13	40
Panic disorder	Women	Mental-behavioural	25	12	40
Multiple Sclerosis	Women	Nervous system	23	10	38
Other specified/unspecified hearing loss	Women	Ear and mastoid process	22	10	35
Systemic lupus erythematosus	Women	Musculoskeletal system	20	9	34
Schizophrenia	Men	Mental-behavioural	893	849	929
Anxiety disorders	Men	Mental-behavioural	569	477	663
Other and unspecified nonorganic psychotic disorders	Men	Mental-behavioural	420	380	457
Acute and transient psychotic disorders	Men	Mental-behavioural	385	326	438
Epilepsy	Men	Nervous system	373	327	417
Mood disorders	Men	Mental-behavioural	368	295	444
Alcohol dependence	Men	Mental-behavioural	367	319	413
Acute alcohol intoxication	Men	Mental-behavioural	272	234	309
Mild intellectual disability	Men	Mental-behavioural	260	220	283
Cerebral palsy	Men	Nervous system	172	136	197
Other neurotic disorders	Men	Mental-behavioural	163	132	195
Other specified and unspecified personality disorders	Men	Mental-behavioural	163	132	194
Other anxiety disorders	Men	Mental-behavioural	157	125	193
Schizoid personality disorder	Men	Mental-behavioural	151	119	168
Type 1 diabetes	Men	Endocrine-nutritional-metabolic	143	107	181
Bipolar affective disorders	Men	Mental-behavioural	137	111	161
Persistent mood disorders	Men	Mental-behavioural	113	82	143
Mental and behavioural disorders due to opioids	Men	Mental-behavioural	94	62	126
Other mental disorders due to brain damage and dysfunction and to physical disease	Men	Mental-behavioural	77	58	94
Schizoaffective disorder	Men	Mental-behavioural	72	54	87
Persistent delusional disorders	Men	Mental-behavioural	67	42	88
Malignant neoplasm of brain	Men	Neoplasms	66	41	87
Emotionally unstable personality disorder	Men	Mental-behavioural	66	46	85

Mental and behavioural disorders due to multiple drug use and use of other psychoactive substances	Men	Mental-behavioural	63	42	84
Myopia	Men	Eye and adnexa	62	37	85
Obesity, other/unspecified	Men	Endocrine-nutritional-metabolic	61	42	81
Convergent concomitant strabismus	Men	Eye and adnexa	60	37	83
Anisometropia and aniseikonia	Men	Eye and adnexa	60	36	82
Other reaction to severe stress, and adjustment disorders	Men	Mental-behavioural	59	37	83
Acute pancreatitis	Men	Digestive system	59	31	90
Presbyopia	Men	Eye and adnexa	55	31	77
Mental and behavioural disorders due to use of other stimulants, including caffeine	Men	Mental-behavioural	54	35	73
Congenital malformations of the circulatory system	Men	Congenital anomalies	50	26	73
Mental and behavioural disorders due to cannabinoids	Men	Mental-behavioural	47	29	65
Congenital anomalies of heart	Men	Congenital anomalies	47	24	70
Behavioural disorders	Men	Mental-behavioural	46	22	70
Obsessive-compulsive disorder	Men	Mental-behavioural	45	31	57
Divergent concomitant strabismus	Men	Eye and adnexa	42	22	63
Mental and behavioural disorders due to sedatives or hypnotics	Men	Mental-behavioural	41	25	57
Phobic anxiety disorders	Men	Mental-behavioural	40	25	56
Post-traumatic stress disorder	Men	Mental-behavioural	37	17	57
Panic disorder	Men	Mental-behavioural	34	19	48
Other specified/unspecified hearing loss	Men	Ear and mastoid process	34	19	49
Generalized anxiety disorder	Men	Mental-behavioural	31	16	46
Status epilepticus	Men	Nervous system	29	17	39
Heart failure, strict	Men	Circulatory system	29	16	42
Other or ill-defined heart diseases	Men	Circulatory system	26	14	38
Subarachnoid haemorrhage	Men	Circulatory system	26	14	38

Table S9: Number of children unborn per 100,000 people by disease category and across all disease diagnoses, from people affected by at least one disease.

Category	N children	Lower 95% CI	Upper 95% CI
<i>Men</i>			
Mental-behavioural	2728	2586	2871
Nervous system	526	469	581
Endocrine-nutritional-metabolic	209	166	253
Eye and adnexa	169	125	214
Circulatory system	83	59	106
Neoplasms	65	40	86

Digestive system	55	27	85
Ear and mastoid process	51	29	73
Congenital anomalies	50	26	73
All	4032	3845	4219
<i>Women</i>			
Mental-behavioural	1489	1376	1605
Nervous system	596	525	668
Endocrine-nutritional-metabolic	255	207	305
Congenital anomalies	220	163	278
Respiratory system	192	135	252
Musculoskeletal system	121	88	155
Circulatory system	111	79	146
Neoplasms	60	32	88
Genitourinary system	50	24	80
Eye and adnexa	46	27	67
Infectious-parasitic	42	18	69
Ear and mastoid process	29	12	48
Digestive system	19	9	30
All	2539	2382	2698

Table S10: Estimated contribution of diseases to completed total fertility rates (TFR) in Finland.

	All			15-19 y.o.			20-24 y.o.			25-29 y.o.			30-34 y.o.			35-39 y.o.			40-44 y.o.			45-49 y.o.			
	Fr	Low 95% CI	Up 95% CI	Fr	Low 95% CI	Up 95% CI	Fr	Low 95% CI	Up 95% CI	Fr	Low 95% CI	Up 95% CI	Fr	Low 95% CI	Up 95% CI	Fr	Low 95% CI	Up 95% CI	Fr	Low 95% CI	Up 95% CI	Fr	Low 95% CI	Up 95% CI	
Men																									
TFR	1.730	1.730	1.730	0.037	0.036	0.037	0.281	0.279	0.282	0.562	0.56	0.563	0.483	0.481	0.484	0.251	0.25	0.252	0.092	0.091	0.093	0.025	0.024	0.025	
TFR, unaffected	1.650	1.650	1.650	0.036	0.036	0.037	0.273	0.272	0.275	0.54	0.538	0.541	0.46	0.459	0.461	0.235	0.234	0.236	0.084	0.083	0.085	0.022	0.021	0.022	
TFR, affected	0.080	0.080	0.080	0.001	0.000	0.001	0.007	0.007	0.008	0.022	0.022	0.023	0.023	0.022	0.023	0.016	0.015	0.016	0.008	0.008	0.008	0.003	0.003	0.003	
TFR, affected (%)	4.614	4.614	4.615	1.52	1.354	1.68	2.651	2.574	2.727	3.951	3.885	4.017	4.723	4.647	4.799	6.189	6.076	6.301	8.897	8.69	9.1	12.505	12.065	12.928	
Women																									
TFR	1.921	1.921	1.921	0.139	0.138	0.14	0.454	0.453	0.455	0.648	0.647	0.649	0.459	0.457	0.46	0.19	0.189	0.191	0.031	0.03	0.031	-			
TFR, unaffected	1.816	1.816	1.816	0.135	0.134	0.136	0.436	0.434	0.437	0.618	0.616	0.619	0.43	0.428	0.431	0.172	0.171	0.173	0.026	0.026	0.027	-			
TFR, affected	0.104	0.104	0.104	0.004	0.004	0.004	0.018	0.018	0.019	0.03	0.03	0.031	0.029	0.029	0.03	0.018	0.018	0.018	0.005	0.004	0.005	-			
TFR, affected (%)	5.440	5.440	5.440	2.863	2.763	2.961	4.073	4.007	4.138	4.652	4.592	4.711	6.366	6.288	6.443	9.539	9.407	9.669	14.642	14.284	14.989	-			

Table S11: Age-specific fertility rates by disease status (Finland only).

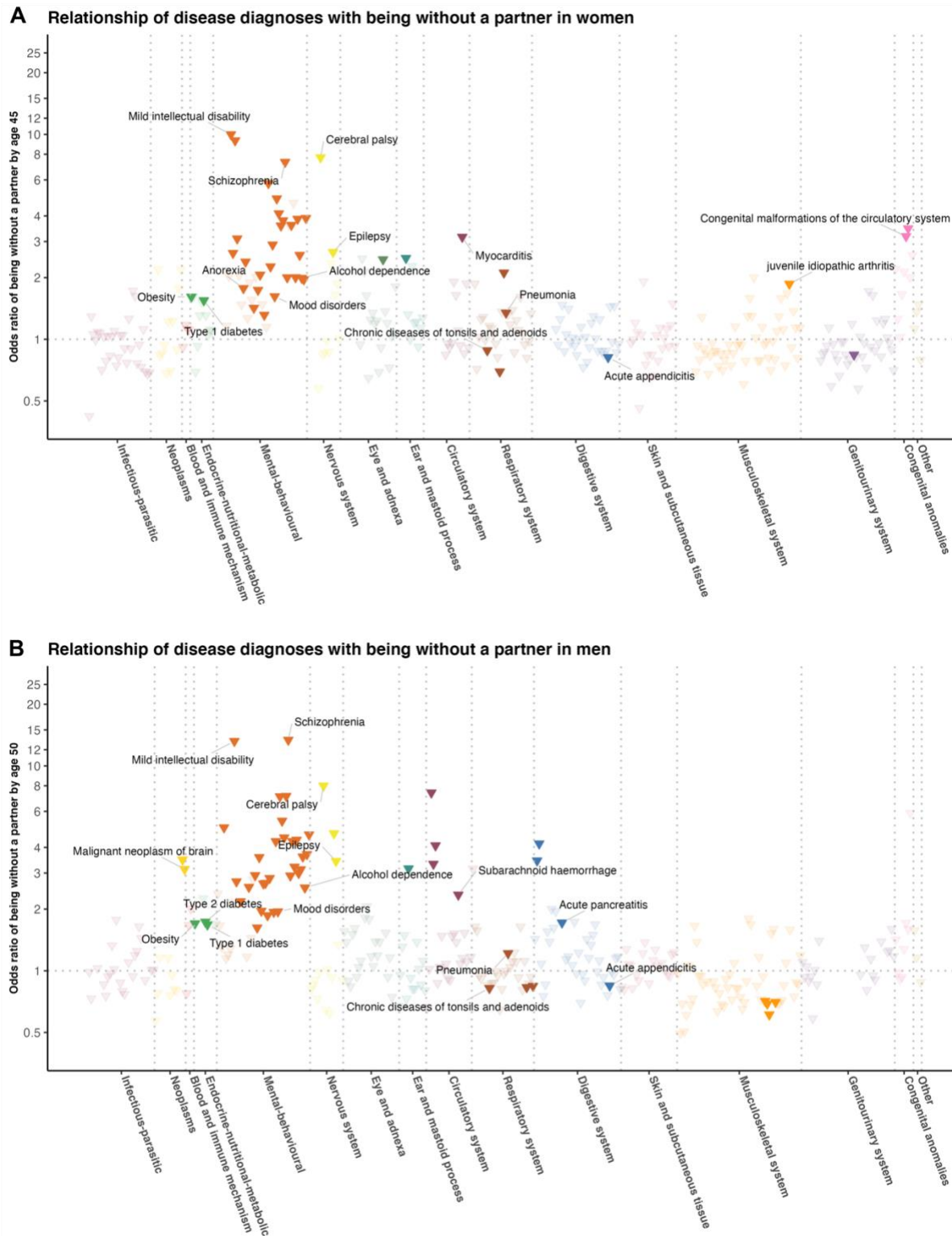
	All			15-19 y.o.			20-24 y.o.			25-29 y.o.			30-34 y.o.			35-39 y.o.			40-44 y.o.			45-49 y.o.			
	Fr	Low 95% CI	Up 95% CI	Fr	Low 95% CI	Up 95% CI	Fr	Low 95% CI	Up 95% CI	Fr	Low 95% CI	Up 95% CI	Fr	Low 95% CI	Up 95% CI	Fr	Low 95% CI	Up 95% CI	Fr	Low 95% CI	Up 95% CI	Fr	Low 95% CI	Up 95% CI	
Men																									
TFR, unaffected	1.785	1.785	1.785	0.037	0.036	0.037	0.283	0.281	0.284	0.576	0.574	0.577	0.502	0.5	0.503	0.264	0.263	0.265	0.098	0.097	0.099	0.026	0.026	0.027	
TFR, affected	1.105	1.105	1.105	0.035	0.031	0.039	0.223	0.216	0.229	0.355	0.35	0.361	0.274	0.27	0.279	0.142	0.139	0.145	0.059	0.057	0.060	0.017	0.016	0.018	
Reduction TFR, unaffected -> TFR, affected (%)	38.074	38.078	38.069	5.722	15.752	-4.015	21.224	23.188	19.279	38.264	39.07	37.461	45.311	46.044	44.583	46.063	46.959	45.177	40.169	41.484	38.878	34.243	36.445	32.126	
Women																									
TFR, unaffected	1.951	1.951	1.951	0.139	0.138	0.14	0.456	0.455	0.458	0.658	0.657	0.66	0.47	0.469	0.471	0.196	0.195	0.197	0.032	0.031	0.032	-			
TFR, affected	1.543	1.543	1.543	0.128	0.123	0.133	0.409	0.403	0.415	0.489	0.483	0.494	0.34	0.336	0.344	0.15	0.147	0.153	0.027	0.026	0.028	-			
Reduction TFR, unaffected -> TFR, affected (%)	20.906	20.909	20.903	7.754	10.711	4.836	10.272	11.33	9.221	25.776	26.428	25.127	27.577	28.264	26.894	23.427	24.364	22.499	16.021	17.936	14.165	-			

6. Mediation effect by singlehood

Similar to our previous childlessness analysis, we estimated the effect of 403 disease diagnoses on the risk of being without a partner by age 45 in women and 50 in men. The information of partnership formation and singlehood was obtained from the longitudinal marriage and partnership information in Finland between 11 April 1971 and 31 December 2018 from the Population Information System and in Sweden between 1 January 1977 and 31 December 2017 from Statistics Sweden. Same-sex couples can register their partnership since 1 March 2002 in Finland and 1 January 1995 in Sweden. In our study, we considered individuals with a same-sex partnership as being with a partner.

6.1. Effects on singlehood

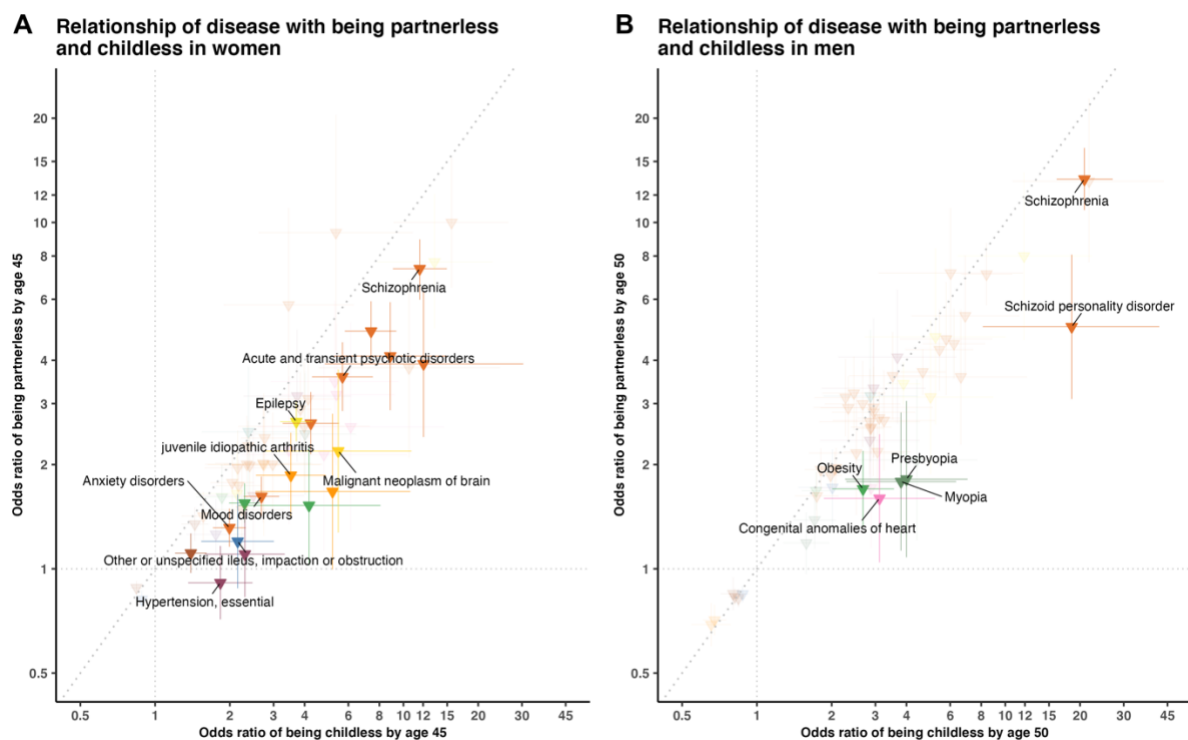
Figure S4. Relationship of 402 disease diagnoses with being without a partner by age 45 in women (Panel A) and 50 in men (Panel B). Only disease diagnoses that are significantly associated after multiple-testing correction are colored.



6.2. Mediation analysis

To quantify the overall effect of singlehood on the association between disease diagnoses and childlessness, we performed linear regression for each sex using all disease diagnoses that were significantly associated with childlessness, with log ORs of disease diagnoses on childlessness as the dependent variable and log ORs on singlehood as the independent variable (**Figure S5**). High R^2 was observed in both men ($R^2=0.85$, regression coefficient =1.08, $P=3.5\times 10^{-23}$) and women ($R^2=0.71$, regression coefficient =0.96, $P=1.0\times 10^{-15}$). Also, the intercept was significant in women (0.42, $P=1.0\times 10^{-15}$) but not in men (0.11, $P=0.13$), demonstrating that there were additional effects not fully captured by union formation in women.

Figure S5. Relationship of disease diagnoses with childlessness (main analysis) versus singlehood by age 45 in women (Panel A) and 50 in men (Panel B), for 74 disease diagnoses that were significantly associated with childlessness from the main analysis. Only disease diagnoses that are significantly different between two outcomes at a nominal P value are colored.



For each disease diagnosis, we performed a causal mediation analysis, with singlehood as a dichotomous latent factor. A median of 29.3% of the disease effects on childlessness in women and 37.9% in men was mediated by singlehood (**table S12**). Different patterns were observed across diseases. For example, singlehood was a significant mediator for women diagnosed with schizophrenia (OR=2.1 [2.0-2.2] for indirect and 6.8 [5.0-9.2] for direct effect), but not for women with hypertension (1.2 [1.1-1.4] for indirect and 2.4 [1.6-3.5] for direct effect).

Table S12: Direct and indirect effects (mediated by singlehood) of disease on childlessness estimated from mediation analysis

(**Table S12** is too large therefore see sheet “S12_MediationAnalysis” from “SUBMIT_TableS3_S5_S7_S12_DiseaseSpecificChildlessness.xlsx”)

6.3. Effects among individuals with registered partners

Figure S6. Relationship of 169 disease diagnoses with childlessness among women (by age 45) (Panel A) and men (by age 50) (Panel B) with registered partners. Only disease diagnoses that are significantly associated after multiple-testing correction are colored.

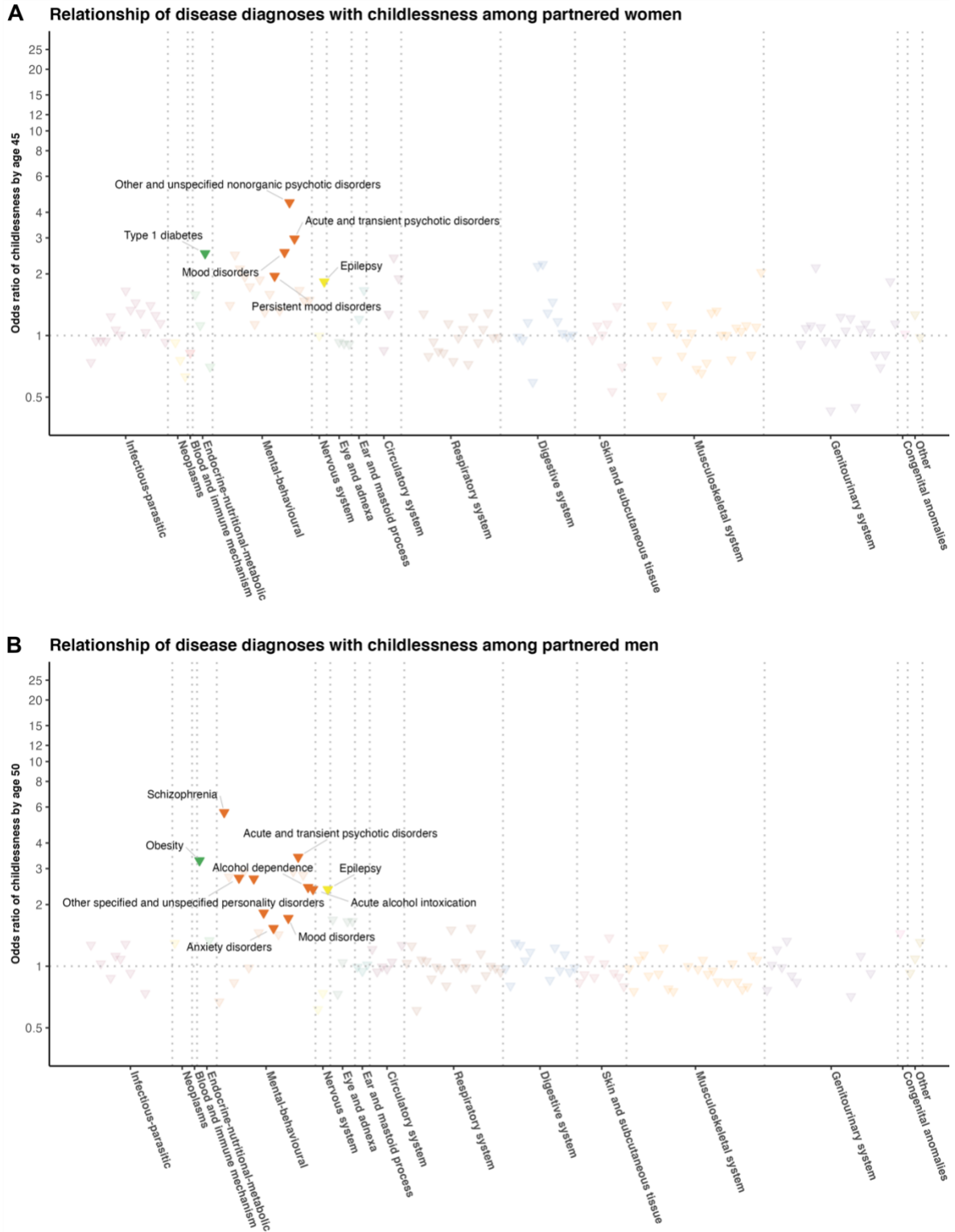
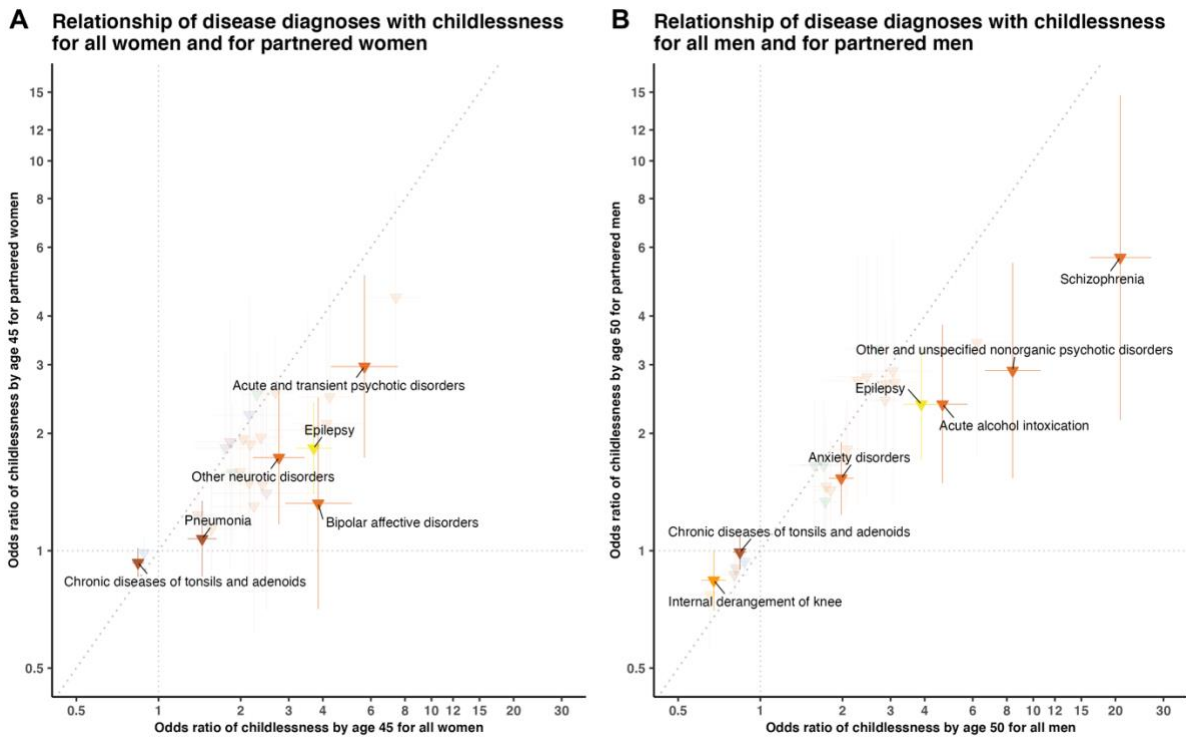


Figure S7: Relationship of disease diagnoses with childlessness by age 45 in women (Panel A) and 50 in men (Panel B) from the general population (main analysis) versus people with registered partners, for 36 disease diagnoses that were significantly associated with childlessness from the main analysis.



7. Population-based and sensitivity analyses

To estimate the population-level effect of diseases on childlessness we performed a nested incident-matched case-control design which matched each childless case to one control based on sex, birth year, municipality of birth (545 from Finland and 1,091 from Sweden), and the highest parental education level (International Standard Classification of Education 1997). For the matching process, among people with the same birth municipality and parental education background, we firstly searched for the individual born at the same year as the control and then extended to the individual with the closest birth year (up to 5 years of difference). There was no overlap among matched controls. Similar to the sibling-based analysis, we only considered the disease diagnosis onset at least one year before the age at first birth of the matched control and examined associations between diseases and childlessness using a conditional logistic regression model. In total, we used 226,860 matched pairs of women (107,375 in Finland and 119,485 in Sweden) and 274,941 of men (127,689 in Finland and 147,252 in Sweden) for the population-based analysis.

Figure S8. Relationship of 403 disease diagnoses with childlessness by age 45 in women (Panel A) and 50 in men (Panel B) from using a nested incident-matched case-control design, matched by birth year, birth municipality, and highest parental education level. Only disease diagnoses that are significantly associated after multiple-testing correction are colored.

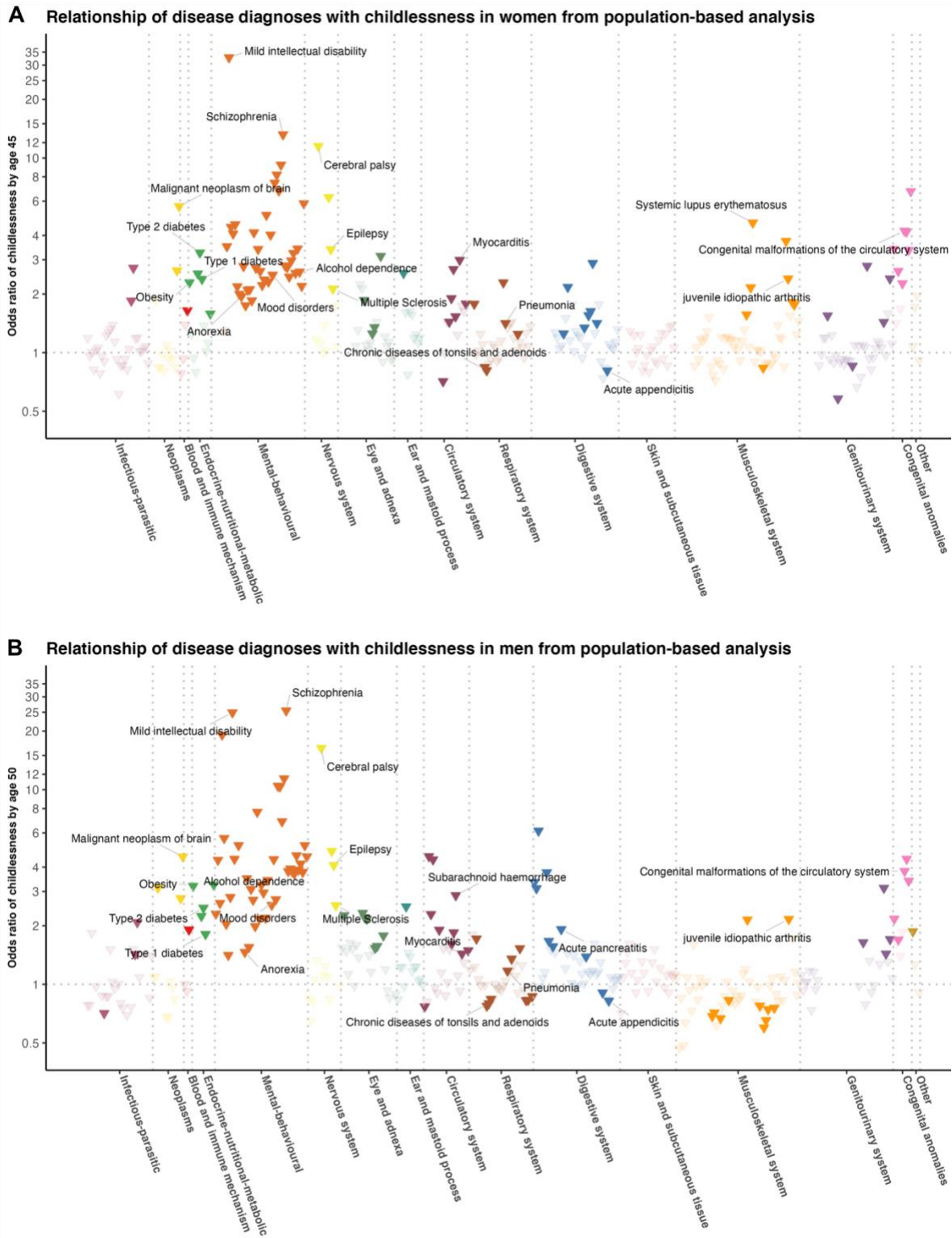


Figure S9. Relationship of disease diagnoses with childlessness by age 45 in women (Panel A) and 50 in men (Panel B) from the sibling-based (main analysis) versus population-based analyses, for 74 disease diagnoses that were significantly associated with childlessness from the main analysis.

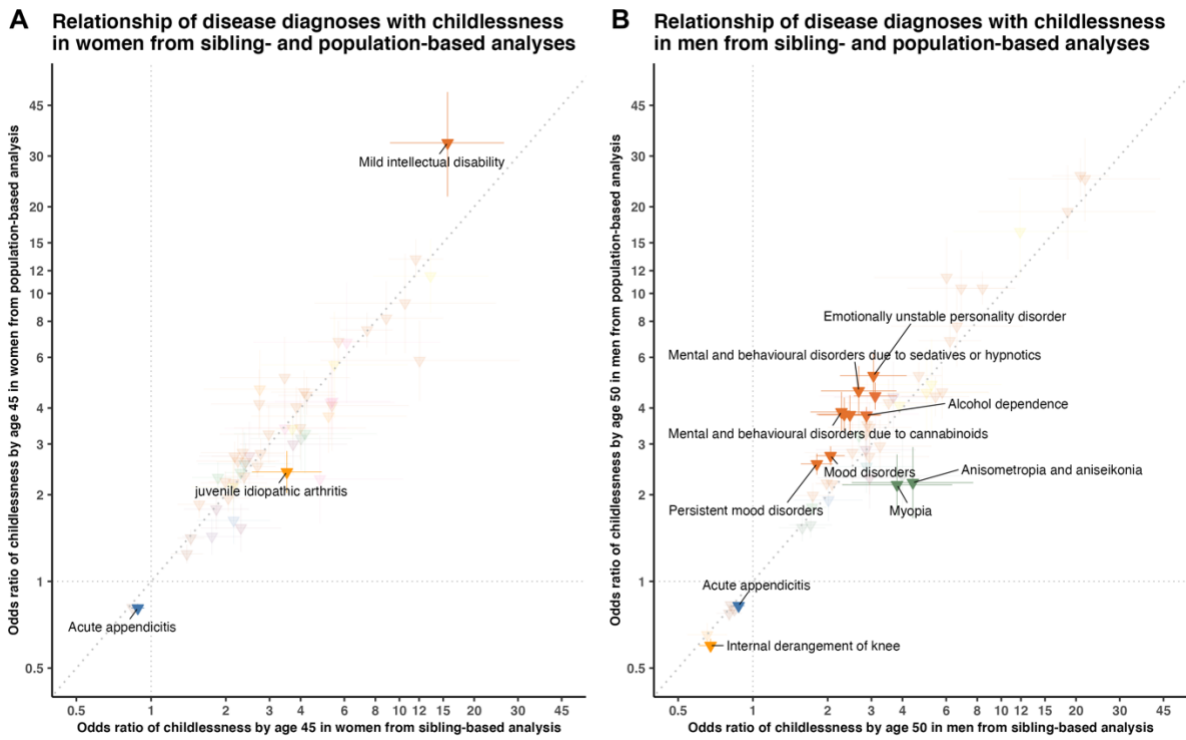


Figure S10. Relationship of 365 disease diagnoses with childlessness restricted to women alive by age 45 (Panel A) and men by 50 (Panel B), using a sibling-based design. Only disease diagnoses that are significantly associated after multiple-testing correction are colored.

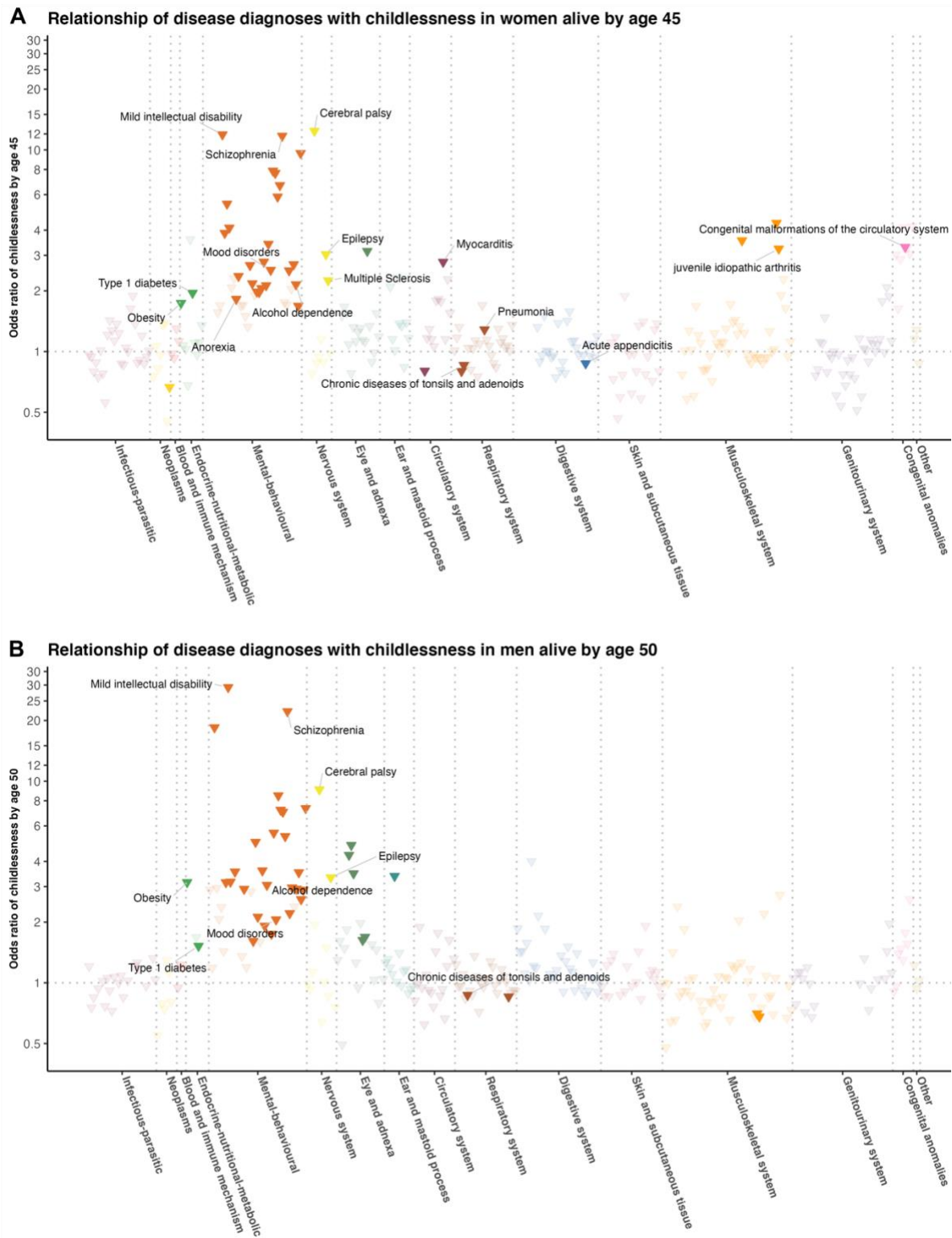


Figure S11. Relationship of disease diagnoses with childlessness in the general population (main analysis) versus the sensitivity analysis which restricted to women alive by age 45 (Panel A) and men by 50 (Panel B), for 71 disease diagnoses that were significantly associated with childlessness from the main analysis.

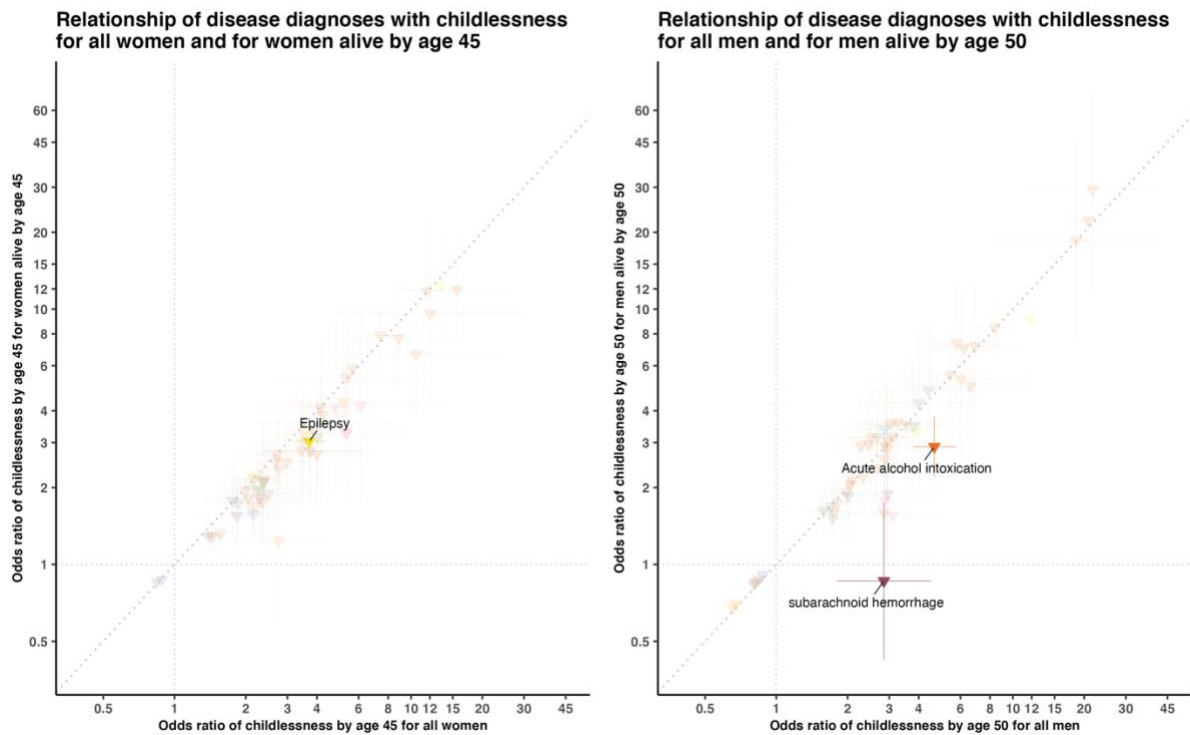


Figure S12: Relationship of 403 disease diagnoses with childlessness by age 45 in women (Panel A) and 50 in men (Panel B) from using a Cox proportional hazards regression model stratified by same-sex full-siblings. Only disease diagnoses that are significantly associated after multiple-testing correction are colored.

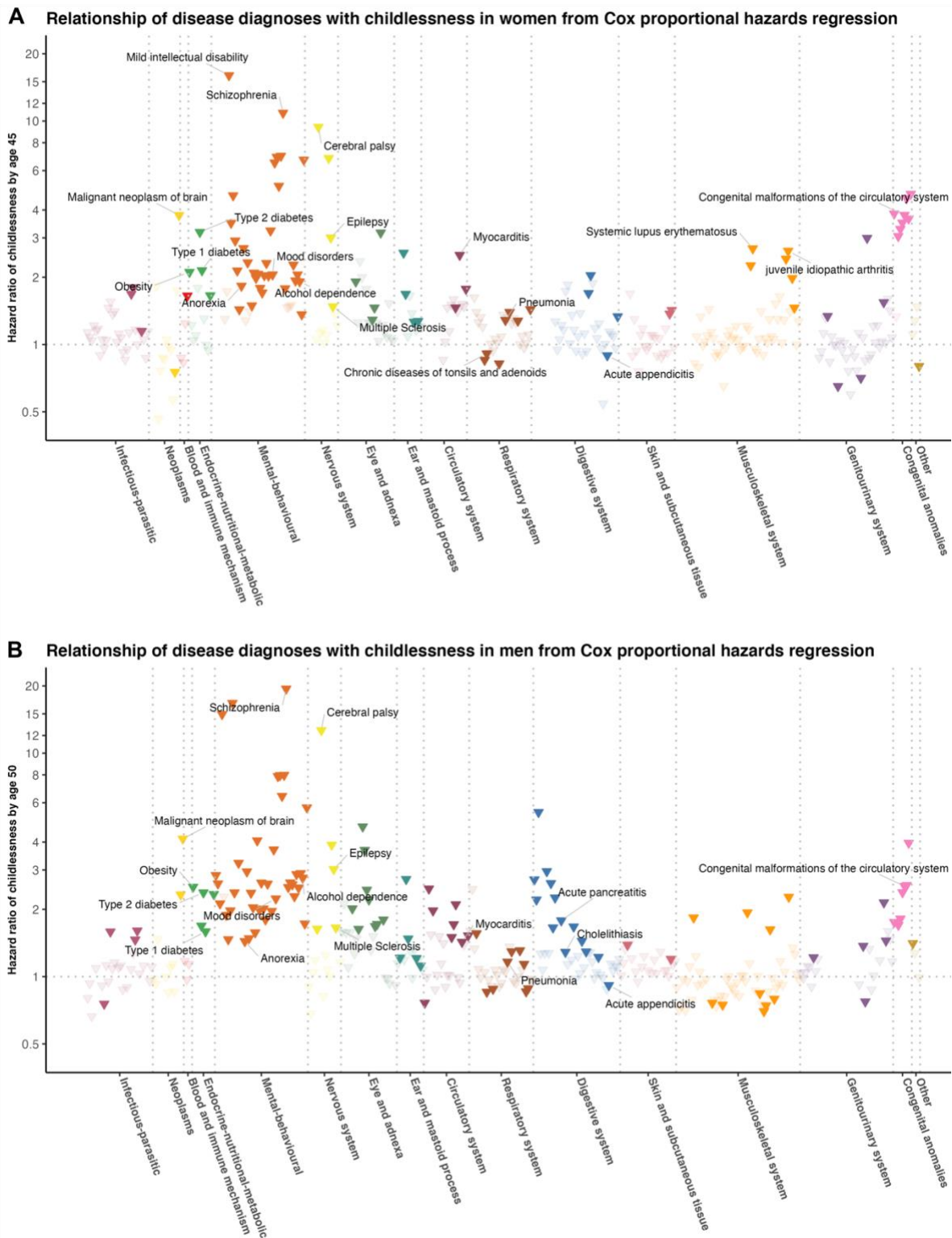


Figure S13: Relationship of disease diagnoses with childlessness by age 45 in women (Panel A) and 50 in men (Panel B) from conditional logistic regression (main analysis) versus stratified Cox proportional hazards regression, for 74 disease diagnoses that were significantly associated with childlessness from the main analysis.

