

1 **Accuracy of COVID-19 self-tests with unsupervised nasal or nasal plus oropharyngeal**
2 **self-sampling in symptomatic individuals in the Omicron period**

3

4 Ewoud Schuit PhD (<https://orcid.org/0000-0002-9548-3214>)^{1,2*}

5 Roderick P Venekamp PhD (<https://orcid.org/0000-0002-1446-9614>)^{1*}

6 Lotty Hooft PhD (<https://orcid.org/0000-0002-7950-2980>)^{1,2}

7 Irene K Veldhuijzen PhD (<https://orcid.org/0000-0002-3132-4070>)³

8 Wouter van den Bijllaardt MD (<https://orcid.org/0000-0003-0676-2594>)^{4,10}

9 Suzan D Pas PhD (<https://orcid.org/0000-0003-1943-1217>)^{4,5}

10 Vivian F Zwart MD (<https://orcid.org/0000-0002-0263-4379>)⁴

11 Esther B Lodder MD⁶

12 Marloes Hellwich MSc (<https://orcid.org/0000-0001-7539-4233>)⁷

13 Marco Koppelman PhD¹²

14 Richard Molenkamp PhD⁸ (<https://orcid.org/0000-0002-9004-3850>)⁸

15 Constantijn Wijers MD⁹

16 Irene H Vroom MD⁹

17 Leonard C Smeets MD¹¹

18 Carla R S Nagel-Imming (<https://orcid.org/0000-0003-2722-1885>)¹

19 Wanda G H Han PhD (<https://orcid.org/0000-0003-0503-9783>)³

20 Susan van den Hof PhD (<https://orcid.org/0000-0002-2968-9652>)³

21 Jan AJW Kluytmans PhD (<https://orcid.org/0000-0003-2665-6844>)¹

22 Janneke H M van de Wijgert PhD (<https://orcid.org/0000-0003-2728-4560>)^{1#}

23 Karel G M Moons PhD (<https://orcid.org/0000-0003-2118-004X>)^{1,2#}

24

25 * Dual first authorship

26 # Dual last authorship

27

28 ¹ Julius Center for Health Sciences and Primary Care, University Medical Center Utrecht, Utrecht University,

29 Universiteitsweg 100, 3584 CG Utrecht, The Netherlands

30 ² Cochrane Netherlands, University Medical Center Utrecht, Utrecht University, Universiteitsweg 100, 3584 CG
31 Utrecht, The Netherlands

32 ³ Centre for Infectious Disease Control, National Institute for Public Health and the Environment (RIVM),
33 Antonie van Leeuwenhoeklaan 9, 3721 MA Bilthoven, The Netherlands

34 ⁴ Microvida Laboratory for Medical Microbiology, Amphia Hospital, Molengracht 21, 4818 CK Breda, The
35 Netherlands

36 ⁵ Microvida Laboratory for Medical Microbiology, Bravis Hospital, Boerhaavelaan 25
37 4708 AE Roosendaal, The Netherlands

38 ⁶ Public Health Service West-Brabant, Doornboslaan 225-227, 4816 CZ Breda, The Netherlands

39 ⁷ Public Health Service Hart voor Brabant, Reitseplein 3, 5037 AA Tilburg, The Netherlands

40 ⁸ Department of Viroscience, Erasmus MC, Doctor Molewaterplein 40, 3015 GD Rotterdam, The Netherlands

41 ⁹ Public Health Service Rotterdam-Rijnmond, Schiedamsedijk 95, 3011 EN Rotterdam, The Netherlands

42 ¹⁰ Department of Infection Control, Amphia Hospital, Molengracht 21, 4818 CK Breda, the Netherlands

43 ¹¹ Reinier Haga Medical Diagnostic Center, Reinier de Graafweg 7, 2625 AD Delft, The Netherlands

44 ¹² National Screening laboratory of Sanquin, Sanquin Blood Supply foundation, Plesmanlaan 125 1066 CX
45 Amsterdam, The Netherlands

46

47 Correspondence to: KGM Moons, Julius Center for Health Sciences and Primary Care, University Medical
48 Center Utrecht, Utrecht University, Universiteitsweg 100, 3584 CG Utrecht, The Netherlands, email:
49 k.g.m.moons@umcutrecht.nl, Tel: +31887559305

50 **Abstract**

51 **Background** Performances of rapid antigen diagnostic tests (Ag-RDTs) with nasal self-sampling, and
52 oropharyngeal plus nasal (OP-N) self-sampling, in the Omicron period are unknown.

53 **Methods** Prospective diagnostic accuracy study among 6,497 symptomatic individuals aged ≥ 16 years
54 presenting for SARS-CoV-2 testing at three test-sites. Participants were sampled for RT-PCR (reference test)
55 and received one Ag-RDT to perform unsupervised with either nasal self-sampling (during the emergence of
56 Omicron, and after Omicron share was $>90\%$, phase-1) or with OP-N self-sampling (in a subsequent phase-2;
57 Omicron share $>99\%$). The evaluated tests were Acon Flowflex (Flowflex; phase-1 only), MP Biomedicals
58 (MPBio), and Siemens-Healthineers Clinitest (Clinitest).

59 **Findings** During phase-1, 45% of Flowflex, 29% of MPBio, and 35% of Clinitest participants were confirmatory
60 testers (previously tested positive by a self-test at own initiative). Overall sensitivities with nasal self-sampling
61 were 79.0% (95% CI: 74.7-82.8%) for Flowflex, 69.9% (65.1-74.4%) for MPBio, and 70.2% (65.6-74.5%) for
62 Clinitest. Sensitivities were substantially higher in confirmatory testers (93.6%, 83.6%, and 85.7%, respectively)
63 than in those who tested for other reasons (52.4%, 51.5%, and 49.5%, respectively). Sensitivities decreased by
64 6.1 ($p=0.16$ by Chi-square test), 7.0 ($p=0.60$), and 12.8 ($p=0.025$) percentage points, respectively, when
65 transitioning from 29% to $>95\%$ Omicron. During phase-2, 53% of MPBio, and 44% of Clinitest participants
66 were confirmatory testers. Overall sensitivities with OP-N self-sampling were 83.0% (78.8%-86.7%) for MPBio
67 and 77.3% (72.9%-81.2%) for Clinitest. Comparing OP-N to nasal sampling, sensitivities were slightly higher in
68 confirmatory testers (87.4% and 86.1%, respectively), and substantially higher in those testing for other reasons
69 (69.3% and 59.9%, respectively).

70 **Interpretation** Sensitivities of three Ag-RDTs with nasal self-sampling decreased during Omicron emergence
71 but was only statistically significant for Clinitest. Sensitivities were substantially influenced by the proportion of
72 confirmatory testers. Addition of oropharyngeal to nasal self-sampling improved sensitivities of MPBio and
73 Clinitest.

74 **Funding** Dutch Ministry of Health, Welfare, and Sport.

75 **Research into context**

76 **Evidence before this study**

77 SARS-CoV-2 rapid antigen diagnostic tests (Ag-RDTs) require no or minimal equipment, provide a result within
78 15-30 minutes, and can be used in a range of settings including for self-testing at home. Self-testing may
79 potentially lower the threshold to testing and allows individuals to obtain a test result quickly and at their own
80 convenience, which could support the early detection of infectious cases and reduce community transmission.
81 Real world evidence on the performance of unsupervised nasal and oropharyngeal plus nasal (OP-N) self-
82 sampling in the Omicron variant period is needed to accurately inform end-users and policymakers. Therefore,
83 we conducted a large prospective diagnostic accuracy study of three commercially available Ag-RDTs with self-
84 sampling (the Acon Flowflex test, the MP Biomedicals test, and the Siemens-Healthineers Clinitest) during and
85 after the emergence of Omicron using RT-PCR as the reference standard. Our aims were to evaluate whether the
86 accuracies of Ag-RDTs with nasal self-sampling changed over time with the emergence of Omicron; and to
87 determine whether addition of oropharyngeal to nasal self-sampling with the same swab yielded higher
88 diagnostic accuracies.

89

90 **What this study adds**

91 The large comprehensive study was conducted in almost 6,500 participants with symptoms when presenting for
92 routine SARS-CoV-2 testing at three public health service COVID-19 test-sites in the Netherlands. During the
93 study, conducted between 21 December 2021 and 10 February 2022, the percentage of the Omicron variant in
94 samples from the national SARS-CoV-2 pathogen surveillance increased from 29% in the first week to 99% in
95 the last week of the study. The period during which the Omicron variant was dominant was divided into a nasal
96 sampling phase (phase-1; Omicron present in >90% of surveillance samples) and an OP-N sampling phase
97 (phase-2; Omicron share was >99%). In phase-1, 45% of Flowflex, 29% of MPBio, and 35% of Clinitest
98 participants visited the test-site because of a positive self-test (confirmatory testers). Overall sensitivities with
99 nasal self-sampling were 79.0% (95% CI: 74.7-82.8%) for the Flowflex, 69.9% (65.1-74.4%) for the MPBio, and
100 70.2% (65.6-74.5%) for the Clinitest Ag-RDT. Sensitivities were 94%, 84%, and 86%, respectively, for
101 confirmatory testers, and 52%, 52%, and 50%, respectively, for those who had other reasons for getting tested.
102 Sensitivities were 87.0% (79.7-92.4%), 83.1% (72.9-90.7%), and 80.0% (51.9-95.7%), respectively, in the first
103 week, and decreased by 6.1 (p=0.16 by Chi-square test), 7.0 (p=0.60), and 12.8 (p=0.025) percentage points in
104 the final week of the study. In Phase-2, 53% of MPBio and 44% of Clinitest participants were confirmatory

105 testers. Overall sensitivities with OP-N self-sampling were 83.0% (78.8%-86.7%) for MPBio and 77.3% (72.9%-
106 81.2%) for Clinitest. When comparing OP-N to nasal sampling, sensitivities were slightly higher in confirmatory
107 testers (87.4% and 86.1%, respectively), and substantially higher in those testing for other reasons (69.3% and
108 59.9%).

109

110 **Implications of all the available evidence**

111 The sensitivities of three commercially available Ag-RDTs performed with nasal self-sampling decreased during
112 the emergence of Omicron, but this trend was only statistically significant for Clinitest. Addition of
113 oropharyngeal to nasal self-sampling improved the sensitivity of the MPBio and Clinitest, most notably in
114 individuals who visited the test-site for other reasons than to confirm a positive self-test. Based on these findings,
115 the manufacturers of MPBio and Clinitest may consider extending their instructions for use to include combined
116 oropharyngeal and nasal sampling, and other manufacturers may consider evaluating this as well.

117 **Introduction**

118 Rapid antigen diagnostic tests (Ag-RDTs) show promising performance for SARS-CoV-2 infection detection.¹⁻⁵
119 Ag-RDTs require minimal equipment, provide a result within 15-30 minutes, and can be performed in a range of
120 settings without laboratory facilities. While Ag-RDTs were initially introduced for use by trained professionals,
121 they are currently widely available over the counter. Self-testing, without supervision of a trained professional,
122 lowers the threshold for testing and allows individuals to obtain a test result quickly, at their own convenience.
123 This in turn could support early detection and self-isolation of infectious cases and reduce community
124 transmission.⁶
125 We previously showed that the SD Biosensor by Roche Diagnostics Ag-RDT with unsupervised nasal self-
126 sampling had a 78.5% sensitivity in symptomatic individuals.⁷ However, since end November 2021, the
127 Omicron variant rapidly replaced the Delta variant. Performance of Ag-RDTs for Omicron might be different
128 due to alterations in viral proteins and infection dynamics. Initial studies comparing Omicron and Delta variants
129 found similar sensitivities for molecular tests⁸, mixed analytical performance of lateral flow devices^{9,10}, and
130 similar real-world sensitivities for Ag-RDTs with sampling and testing by trained professionals.^{11,12}
131 Additionally, anecdotal concerns were raised about the performance of Ag-RDTs when applying nasal self-
132 sampling only since Omicron variant's viral particles seem more prevalent in the throat than nose. One study
133 indeed showed improved Ag-RDT sensitivity with combined throat and nasal sampling by trained
134 professionals.¹² Currently, real-world data on comparative accuracy of Ag-RDTs with unsupervised nasal or
135 combined oropharyngeal plus nasal (OP-N) self-sampling are lacking.
136 Therefore, we studied the accuracy of three widely commercially available Ag-RDTs with unsupervised self-
137 sampling during and after emergence of Omicron using RT-PCR as reference standard; to evaluate whether
138 accuracies of Ag-RDTs with nasal self-sampling changed over time; and to quantify whether addition of
139 oropharyngeal to nasal self-sampling yields higher diagnostic accuracies.

140

141 **Methods**

142 The study is reported according to the STARD 2015 guidelines.¹³

143

144 **Study design and population**

145 This large prospective diagnostic test accuracy study was embedded within the Dutch public testing
146 infrastructure. Testing is always by RT-PCR, free-of-charge, but only available for government-approved test

147 indications. During the study, 21 December 2021 to 10 February 2021, these were: having (i) any symptom of
148 potential SARS-CoV-2 infection; (ii) been identified as close contact of a SARS-CoV-2 index case; (iii) tested
149 positive on any commercially available Ag-RDT after self-sampling at own initiative (confirmatory testers); or
150 (iv) returned from a country on the government's list of high-risk-countries.¹⁴

151 Participants were recruited consecutively at three public health service (PHS) COVID-19 test-sites, in
152 Rotterdam-Rijnmond (Rotterdam), Central- and Northeast Brabant (Tilburg), and West-Brabant (Roosendaal).
153 Individuals were eligible if 16 years or older and were willing and able to sign a digital informed consent form in
154 Dutch. Current analyses only include individuals who reported any SARS-CoV-2 infection-related symptom at
155 the time of sampling.

156 The estimated share of Omicron, according to national SARS-CoV-2 pathogen surveillance, increased during the
157 study from 29% (week 51 2021) to 99% (week 5 2022; >95% BA.1 variant).¹⁵⁻¹⁷ From 12 January 2022
158 onwards, the Omicron share was >90%. Most analyses, apart from the time-trend analyses, included data from
159 the latter Omicron period. That period was further subdivided into a nasal sampling only phase (phase-1;
160 Omicron present in >90% of surveillance samples) and an OP-N sampling phase (phase-2; Omicron share
161 >99%).

162

163 **Inclusion procedure, specimen collection and testing**

164 Individuals visiting one of the participating test-sites were asked by test-site staff whether they were willing to
165 participate. If interested, they received participant information, a test-site specific Ag-RDT, and an email with a
166 link to access study documentation. Next, trained test-site staff took a swab for routine RT-PCR testing. The RT-
167 PCR sampling method differed slightly across test-sites; the Rotterdam and Tilburg sites used oropharyngeal and
168 nasopharyngeal sampling, and the Roosendaal site combined oropharyngeal and nasal sampling (supplementary
169 material 3). At all three sites, samples were tested in an off-site laboratory by RT-PCR on a Cobas 6800 or 8800
170 platform (Roche Diagnostics).

171 During the initial study weeks (in 2021 and the first one in 2022) and during phase-1 (week 2 to 3 (MPBio and
172 Clinitest) or 5 (Flowflex) in 2022), participants received instructions to perform the Ag-RDT at home using only
173 nasal self-sampling according to the manufacturers' instructions. Participants received one of three Ag-RDTs:
174 Acon Labs Flowflex COVID-19 Antigen Home Test ("Flowflex") in Rotterdam; MP Biomedicals Rapid SARS-
175 CoV-2 Antigen Test Card ("MPBio") in Tilburg; and Siemens-Healthineers CLINITEST Rapid COVID-19
176 Antigen Test ("Clinitest") in Roosendaal. During phase-2 (week 4 to 6 in 2022), participants in Tilburg (MPBio)

177 and Roosendaal (Clinitest) received instructions to perform OP-N self-sampling with the same swab according to
178 the investigator's instructions for oropharyngeal sampling plus the manufacturer's instructions for nasal self-
179 sampling. We did not evaluate the Flowflex test combined with OP-N sampling because the swab provided in
180 the Flowflex test kits was deemed not suitable for OP self-sampling. All tests are CE-marked for nasal sampling.
181 MPBio and Clinitest were not CE-marked for OP-N sampling, but after safety checks by the quality team of the
182 PHS West-Brabant, and consultation with in-house in-vitro diagnostic regulation experts and the Medical Ethical
183 Committee Utrecht, both Ag-RDTs were considered safe for use with OP-N sampling.

184 Participants interpreted their Ag-RDT results visually according to manufacturer's instructions, and always
185 before they received their RT-PCR result from the PHS. Vice versa, the Ag-RDT result was not available to the
186 laboratories that conducted the RT-PCR tests for the PHS. Participants received their RT-PCR result conform
187 PHS routine practice to direct any further management, e.g., isolation, if applicable.

188 Participants were asked to complete the study procedures at home as soon as possible, and no later than within
189 three hours of their test site visit. They were asked to first provide informed consent electronically via the
190 participation link in the email, to subsequently perform the self-test, and to complete a short online questionnaire
191 (supplementary material 1). Participants who did not complete this within three hours of their test-site visit were
192 contacted by a call centre with the request to perform the self-test and complete the questionnaire as soon as
193 possible.

194 Participants with a negative RT-PCR test result received an email after 10 days to complete a follow-up
195 questionnaire (supplementary material 2) to capture any infections that were missed by the baseline RT-PCR
196 test.

197

198 **Outcomes and statistical analyses**

199 Primary outcomes were diagnostic accuracy (sensitivity, specificity, positive and negative predictive values with
200 corresponding 95% confidence intervals [95% CI]) of each Ag-RDT either with nasal or with OP-N self-
201 sampling, and RT-PCR testing as reference. Secondary outcomes were diagnostic accuracies stratified by reason
202 for testing (confirmatory testing after a positive self-test at one's own initiative, type of symptoms, close contact,
203 or other reason), COVID-19 vaccination status (no vaccination or vaccinated once, twice, or thrice), having had
204 prior SARS-CoV-2 infection, gender, and age (16-40, >40 years).

205 Also, we assessed whether performance of the three Ag-RDTs with nasal self-sampling changed over time
206 during emergence of Omicron, by analysing the Ag-RDTs' sensitivities and specificities per week. Weekly

207 intervals were chosen because the share of the Omicron variant in The Netherlands was assessed weekly in the
208 national pathogen surveillance.¹⁶ Sensitivities in the first and last week were compared by Chi-square tests.
209 All primary and secondary diagnostic accuracies were also determined after applying a viral load cut-off (≥ 5.2
210 \log_{10} SARS-CoV-2 E-gene copies/mL). This was the viral load cut-off above which 95% of people with a
211 positive RT-PCR test had a positive virus culture based on previous work.² Furthermore, considering the large
212 influence of confirmatory testers in our study populations, all analyses were repeated stratified by confirmatory
213 testing (yes/no).
214 Finally, self-reported user experiences with each Ag-RDT and self-reported numbers of infections that may have
215 been missed by baseline RT-PCR testing were assessed.
216 We performed complete cases analysis because the number of individuals without RT-PCR test or Ag-RDT
217 results was very low (Figure 1).

218

219 **Sample size calculation**

220 In our previous SD-Biosensor (Roche) SARS-CoV-2 nasal Ag-RDT self-testing study, we observed a sensitivity
221 of 79% in symptomatic participants.⁷ For the present study, we conservatively assumed sensitivities of 70% for
222 all three Ag-RDTs irrespective of self-sampling method, with an error margin of 5%, type I error of 5% and
223 power of 80%. Hence, we aimed for 335 positive RT-PCR tests per Ag-RDT and per self-sampling method.
224 Since Omicron was emerging at start of the study mid-December 2021, we extended the study to ensure accrual
225 of at least 335 positive RT-PCR tests per Ag-RDT and sampling strategy when Omicron comprised $>90\%$.¹⁶

226

227 **Role of the funding source**

228 This study was funded by the Dutch Ministry of Health, Welfare, and Sport. The funder had no role in design;
229 collection, analysis, and interpretation of data; writing and decision to submit the paper for publication.

230

231 **Results**

232 A total of 3,076 individuals participated in the Delta-Omicron transition phase prior to phase-1 (Figure S1) and a
233 further 2,199 in phase-1 and 1,222 individuals in phase-2 (Figure 1). Participant characteristics for the Delta-
234 Omicron transition phase are presented in Table S1 and for phases 1 and 2 in Table 1.

235

236 *Overall Ag-RDT accuracies with nasal self-sampling in the Omicron period*

237 Overall sensitivities were 79.0% (74.7-82.8%) for Flowflex, 69.9% (65.1-74.4%) for MPBio, and 70.2% (65.6-
238 74.5%) for Clinitest (Table 2, Figure 2). After applying the viral load cut-off, sensitivities increased to 85.6%
239 (81.5-89.1%), 78.5% (73.8-82.8%), and 77.0% (72.4-81.2%), respectively (Figure S2). Specificities were >92%,
240 positive predictive values >94%, and negative predictive values >59% for all three Ag-RDTs in all analyses
241 (Table 2), with slightly higher specificities and PPVs for MPBio and Clinitest, and higher NPVs for Flowflex.
242 Supplementary Tables S2-S4 show all 2×2 tables.

243

244 *Overall Ag-RDT accuracies with combined OP-N self-sampling in the Omicron period*

245 Overall sensitivities were 83.0% (78.8-86.7%) for MPBio and 77.3% (72.9-81.2%) for Clinitest (Table 2, Figure
246 2). After applying the viral load cut-off, sensitivities increased to 89.8% (86.0-92.9%) and 83.7% (79.5-87.3%),
247 respectively (Figure S2). Specificities, positive predictive values, and negative predictive values were for both
248 Ag-RDTs >93%, >96%, and >75%, respectively, in all analyses (Table 2).
249 Supplementary Tables S5-S6 show all 2×2 tables.

250

251 *Stratified Ag-RDT accuracies with either nasal or combined OP-N self-sampling*

252 With some differences across the three Ag-RDTs, we found lower sensitivities in participants who had had a
253 previous SARS-CoV-2 infection, in women, and in those older than 40 (Table 2, Figure 2). Application of the
254 viral load cut-off resulted in higher sensitivities, but all stratification trends remained similar, except that
255 sensitivity differences by previous SARS-CoV-2 infection status were no longer significant for Flowflex (Figure
256 S2). The largest differences in RT-PCR positivity percentages and Ag-RDTs performances were between
257 confirmatory testers and individuals who visited the test-site for other reasons (Table 2, Figure 2). In
258 confirmatory testers, sensitivities were 93.6% (89.9-96.2%) for Flowflex, 83.6% (78.1-88.2%) for MPBio, and
259 85.7% (80.7-89.8%) for Clinitest with nasal self-sampling only, and 87.4% (82.9-91.0%) for MPBio and 86.1%
260 (81.5-89.9%) for Clinitest with combined OP-N self-sampling (Table 2, Figure 2). In individuals who tested for
261 other reasons, sensitivities were 52.4% (44-60.8%) for Flowflex, 51.5% (43.7-59.2%) for MPBio, and 49.5%
262 (42.0-56.9%) for Clinitest with nasal self-sampling only, and 69.3% (58.6-78.7%) for MPBio and 59.9% (51.3-
263 68.0%) for Clinitest with OP-N self-sampling. Diagnostic accuracies stratified by all reasons for testing are
264 presented in Table S7.

265 Repeating all primary and secondary analyses in confirmatory and non-confirmatory testing participants
266 separately indicated no distinctly different trends in sensitivities across subgroups (Figure S3 for nasal sampling

267 and Figure S4 for OP-N sampling). Differences across subgroups were less pronounced in the confirmatory
268 testers than in non-confirmatory testers, with much higher sensitivities among confirmatory testers in all strata.

269

270 *Ag-RDT accuracy changes over time during emergence of Omicron with nasal self-sampling only*

271 Sensitivities of all three Ag-RDTs were highest during the first week (Figure 3) when the Omicron share was
272 28.6%: 87.0% (79.7-92.4%) for Flowflex, 80.0% (51.9-95.7%) for MPBio, and 83.1% (72.9-90.7%) for
273 Clinitest. With emergence of Omicron, sensitivities decreased by 6.1 percentage points for Flowflex (Chi-square
274 test statistic 2.0; p-value=0.16), 7.0 for MPBio (Chi-square test statistic 0.28; p-value=0.60), and 12.8 for
275 Clinitest (Chi-square test statistic 5.0; p-value=0.025). Specificities varied between 93.2% and 99.6% over time.
276 Application of the viral load cut-off resulted in higher sensitivities but all trends over time remained similar
277 (Figure 3).

278 Stratification of the time trend analysis by reason for testing revealed that these time trends were similar but
279 more pronounced in non-confirmatory testers than in confirmatory testers, although confidence intervals are
280 wide (Figure S5).

281

282 *User experiences and 10-day follow-up*

283 Information on user experiences and positive RT-PCR tests during the 10-day follow-up period are presented in
284 Tables S8 and S9, respectively.

285

286 **Discussion**

287 This large diagnostic accuracy evaluation of three commercially available Ag-RDTs in symptomatic individuals
288 showed overall sensitivities ranging from 70% to 79%, increasing to 77% to 85% when a viral load cut-off was
289 applied, for unsupervised nasal self-sampling during a period in which Omicron was dominant. Emergence of
290 Omicron was associated with a 6 to 13 percentage points decline in overall Ag-RDTs' sensitivities when
291 combined with nasal self-sampling, although this trend was only significant for Clinitest. The overall
292 sensitivities of the MPBio and Clinitest Ag-RDTs increased from 70% to 83% and 70% to 77%, respectively,
293 when combined with OP-N self-sampling instead of nasal self-sampling only. All above-mentioned sensitivities
294 were substantially higher in confirmatory testers than in those who visited test-sites for other reasons.

295

296 Our pre-Omicron studies, and when less than 5% of participants were confirmatory testers, found sensitivities of

297 72-83% for three different Ag-RDTs when performed by trained professionals, and 78.5% for the SD Biosensor
298 Ag-RDT when performed with unsupervised self-sampling from the nose.^{7,18,19} The sensitivities that we found in
299 the first week of the current study, when Delta was still highly dominant, were similar (Flowflex 87%, MPBio
300 80%, and Clinitest 83%), although the percentage of confirmatory testers in this study was much higher (21%-
301 24%). However, sensitivities declined to 80%, 70%, and 70%, respectively, in the Omicron period. Recent
302 studies from the USA and Italy that evaluated Ag-RDTs when Omicron was dominant, found comparable
303 sensitivities of 74% (128/173 RT-PCR positives) and 82% (126/154 RT-PCR positives), but sampling was
304 performed by professionals and sample sizes were smaller.^{11,12}

305 We postulate several potential reasons for the somewhat lower sensitivities with Omicron. First, mutations in the
306 Omicron's Nucleocapsid (N) protein, the target of Ag-RDTs, could influence binding efficiency of antibodies
307 used in the Ag-RDTs. However, analytical sensitivity based on isolated Omicron and Delta virus generally
308 appeared similar.⁹ Second, the proportion of confirmatory testers, who obviously have a higher a-priori chance
309 of testing positive on the Ag-RDT, may have fluctuated over time and by test-site, although our time trend
310 analyses did not confirm this hypothesis (see below). Third, a larger proportion of individuals over time have
311 experienced a SARS-CoV-2 infection, which may have affected Ag-RDT performance (see below). Fourth,
312 during the study period the participating test-sites and laboratories experienced increasing requests for testing,
313 exceeding the maximum capacity of the Dutch testing infrastructure. As a result, the exposure-testing intervals of
314 participants may have been increased during those weeks, resulting in somewhat lower viral loads at the time of
315 inclusion in the study.

316

317 The largest differences in RT-PCR positivity percentages and Ag-RDTs' performance were between
318 confirmatory testers and individuals who attended the test-sites for other reasons. As expected, RT-PCR
319 positivity percentages were close to 100% in the confirmatory testers and substantially lower (30% to 43%) in
320 the 'other reasons' group. This agreed with test positivity percentages observed in national surveillance during
321 the study. Logically, a higher proportion of confirmatory testers (93-95%) than other testers (76-77%) had viral
322 loads above the used viral-load cut-off. Adding oropharyngeal to nasal sampling had a larger benefit in the other
323 reasons group (10-18% increase in sensitivity) than in the confirmatory testers group (<1-4%) because the
324 sensitivities were already very high in the latter group.

325

326 We found trends towards lower sensitivities in participants who had a previous SARS-CoV-2 infection (60-67%)

327 compared to those who had not (72-83%), with non-overlapping confidence intervals for Flowflex with nasal
328 self-sampling only. This trend was absent for MPBio with OP-N sampling. These findings should be interpreted
329 with caution due to the larger uncertainty around these subgroup specific accuracy estimates. However, we
330 observed similar trends for the BD-Veritor and SD-Biosensor Ag-RDTs with either professional or self-sampling
331 in two previous studies.^{5,7} The lower sensitivities of Ag-RDTs in individuals with a prior infection may be
332 explained by generally lower viral loads, with some individuals potentially carrying viral RNA in the absence of
333 a productive infection (i.e. no viral antigen production). Another explanation might be that individuals with a
334 prior infection have circulating anti-N-protein antibodies²⁰ which might bind to the N protein produced during
335 the new infection, and thereby hampering the binding of monoclonal antibodies against the N-protein in the test
336 device. These effects might be test device-specific given the variability in the performance across the three AG-
337 RDTs.⁵ We also found trends towards slightly higher sensitivities in participants who never received a COVID-
338 19 vaccination for the MPBio and Clinitest Ag-RDTs with nasal self-sampling, but all confidence intervals
339 overlapped with those who were vaccinated 1, 2 or 3 times and no differential impact was observed when
340 combined OP-N sampling was applied. A detailed discussion of other subgroup analysis results can be found in
341 supplementary material 4.

342

343 Our study is the only Ag-RDT diagnostic accuracy study thus far that was conducted during the emergence of
344 Omicron, and that compared Ag-RDTs' performances with nasal self-sampling versus combined OP-N self-
345 sampling. Additional strengths include the large numbers of participants recruited at multiple test-sites, the low
346 percentage of missing values, reference test sampling and Ag-RDT self-testing within a few hours, unsupervised
347 self-testing conform the real-world context of self-testing, blinding of participants for the reference test result,
348 blinding of laboratory staff for the Ag-RDT result, and the use of a viral load cut-off.

349 Our study also has some limitations. First, the sample size calculation was based on the primary analysis and
350 diagnostic accuracy parameters are by definition less precise for stratified and weekly analyses. Second, we did
351 not determine the virus lineage in individual samples but relied on the national pathogen surveillance data to
352 estimate the weekly Omicron variant prevalence.¹⁶ This surveillance system includes approximately 2,000
353 random samples from positive samples across the country on a weekly basis. Since regional variations in the
354 Netherlands are very small (data not shown), we are confident that Omicron's share was over 90% in all test-
355 sites from 12 January 2022 onwards. Third, the viral load cut-off that we used was the cut-off above which 95%
356 of people with a positive RT-PCR test result had a positive virus culture in our similar previous study.² Those

357 experiments were done when the Alpha variant dominated and participants were mostly unvaccinated. However,
358 we believe that this estimate is still more meaningful than using arbitrary Ct value cut-offs of 25 or 30, as is
359 often done.^{21,22}

360

361 We found that Ag-RDT performance with nasal self-sampling declined during the period that Omicron emerged.
362 We also showed that Ag-RDT performance can be improved by adding oropharyngeal to nasal self-sampling.
363 Therefore, after proper evaluation, Ag-RDT manufacturers may consider extending their instructions for use to
364 include combined oropharyngeal and nasal self-sampling. Positive predictive values were high throughout our
365 study, and symptomatic individuals can therefore rely on a positive Ag-RDT result irrespective of SARS-CoV-2
366 variant dominance or method of self-sampling. Negative predictive values were much lower. In mid-January
367 2022, the Dutch government advised all individuals with symptoms to do a self-test but advised vulnerable
368 persons and those in close contacts with vulnerable persons to do RT-PCR tests at the PHS. In case of a negative
369 self-test, individuals would be allowed to go to work or school. Our data show that this does reduce but not
370 minimize transmission risks because of the likelihood of false-negative Ag-RDT results. As per national policy,
371 we recommend that persons who test negative by self-test adhere to the general preventive measures such as
372 applying hand hygiene, ensure indoor ventilation, and wearing mouth-nose masks in crowded places. In case of a
373 positive self-test, self-isolation is required but confirmatory testing seems unnecessary in most situations if the
374 infection pressure is high.

375 **References**

376

377 1. RIVM Centrum Infectieziektebestrijding. *Status validatie SARS-CoV-2 antigeen sneltesten, 10 Mar*
378 *2021 [Dutch]*. 2021. <https://lci.rivm.nl/antigeensneltesten>

379 2. Schuit E, Veldhuijzen IK, Venekamp RP, et al. Diagnostic accuracy of rapid antigen tests in
380 asymptomatic and presymptomatic close contacts of individuals with confirmed SARS-CoV-2 infection: cross
381 sectional study. *BMJ*. Jul 27 2021;374:n1676. doi:10.1136/bmj.n1676

382 3. Brummer LE, Katzenschlager S, Gaeddert M, et al. Accuracy of novel antigen rapid diagnostics for
383 SARS-CoV-2: A living systematic review and meta-analysis. *PLoS Med*. Aug 2021;18(8):e1003735.
384 doi:10.1371/journal.pmed.1003735

385 4. Scheiblaue H, Filomena A, Nitsche A, et al. Comparative sensitivity evaluation for 122 CE-marked
386 rapid diagnostic tests for SARS-CoV-2 antigen, Germany, September 2020 to April 2021. *Euro Surveill*. Nov
387 2021;26(44)doi:10.2807/1560-7917.ES.2021.26.44.2100441

388 5. Venekamp RP, Veldhuijzen IK, Moons KGM, et al. Diagnostic accuracy of three prevailing rapid
389 antigen tests for detection of SARS-CoV-2 infection in the general population: cross sectional study. *medRxiv*.
390 2021;

391 6. European Centre for Disease Prevention and Control (ECDC). *Considerations on the use of self-tests for*
392 *COVID-19 in the EU/EEA*. 2021. *ECDC Technical Report*.

393 7. Schuit E, Venekamp RP, Veldhuijzen IK, et al. Accuracy and usability of saliva and nasal rapid antigen
394 self-testing for detection of SARS-CoV-2 infection in the general population: a head-to-head comparison.
395 *medRxiv*. 2021;doi:<https://doi.org/10.1101/2021.12.08.21267452>

396 8. Molenkamp R, Igloi Z. *Evaluation of Antigen rapid test and PCR test to Omicron variant*. 2021.
397 [https://www.erasmusmc.nl/-/media/erasmusmc/pdf/1-themaspecifiek/viroscience/2021-evaluation-omicron-in-](https://www.erasmusmc.nl/-/media/erasmusmc/pdf/1-themaspecifiek/viroscience/2021-evaluation-omicron-in-pcr-and-ag-assays.pdf)
398 [pcr-and-ag-assays.pdf](https://www.erasmusmc.nl/-/media/erasmusmc/pdf/1-themaspecifiek/viroscience/2021-evaluation-omicron-in-pcr-and-ag-assays.pdf)

- 399 9. Deeraïn J, Druce J, Tran T, et al. Assessment of the Analytical Sensitivity of 10 Lateral Flow Devices
400 against the SARS-CoV-2 Omicron Variant. *J Clin Microbiol.* Feb 16 2022;60(2):e0247921.
401 doi:10.1128/jcm.02479-21
- 402 10. Osterman A, Badell I, Basara E, et al. Impaired detection of omicron by SARS-CoV-2 rapid antigen
403 tests. *Med Microbiol Immunol.* Feb 20 2022;doi:10.1007/s00430-022-00730-z
- 404 11. de Michelena P, Torres I, Ramos-García A, et al. Real-life performance of a COVID-19 rapid antigen
405 detection test targeting the SARS-CoV-2 nucleoprotein for diagnosis of COVID-19 due to the Omicron variant.
406 *medRxiv.* 2022;doi:<https://doi.org/10.1101/2022.02.02.22270295>
- 407 12. Schrom J, Marquez C, Pilarowski G, et al. Direct Comparison of SARS-CoV-2 Nasal RT-PCR and
408 Rapid Antigen Test (BinaxNOW™) at a Community Testing Site During an Omicron Surge. *medRxiv.*
409 2022;doi:<https://doi.org/10.1101/2022.01.08.22268954>
- 410 13. Bossuyt PM, Reitsma JB, Bruns DE, et al. STARD 2015: an updated list of essential items for reporting
411 diagnostic accuracy studies. *BMJ.* Oct 28 2015;351:h5527. doi:10.1136/bmj.h5527
- 412 14. European Centre for Disease Prevention and Control (ECDC). Combined indicator: 14-day notification
413 rate, testing rate and test positivity, updated 16 September 2021, weeks 35-36. Updated 16 September 2021.
414 Accessed 7 December 2021, 2021. [https://www.ecdc.europa.eu/en/publications-data/combined-indicator-week-](https://www.ecdc.europa.eu/en/publications-data/combined-indicator-week-36-2021)
415 [36-2021](https://www.ecdc.europa.eu/en/publications-data/combined-indicator-week-36-2021)
- 416 15. Rijksoverheid. Variants of the corona virus. Updated 2 December 2021. Accessed 2 December 2021,
417 <https://coronadashboard.rijksoverheid.nl/landelijk/varianten>
- 418 16. RIVM Centrum Infectieziektebestrijding. Variants of the corona virus SARS-CoV-2 [Dutch]. Updated
419 30 November 2021. Accessed 2 December 2021, <https://www.rivm.nl/coronavirus-covid-19/virus/varianten>
- 420 17. RIVM Centrum Infectieziektebestrijding. Epidemiologische situatie van SARS-CoV-2 in Nederland
421 [Dutch]. Updated 28 September 2021. Accessed 7 December 2021, 2021.
422 [https://www.rivm.nl/sites/default/files/2021-09/COVID-](https://www.rivm.nl/sites/default/files/2021-09/COVID-19_WebSite_rapport_wekelijks_20210928_1146_final.pdf)
423 [19_WebSite_rapport_wekelijks_20210928_1146_final.pdf](https://www.rivm.nl/sites/default/files/2021-09/COVID-19_WebSite_rapport_wekelijks_20210928_1146_final.pdf)

- 424 18. Klein JAF, Kruger LJ, Tobian F, et al. Head-to-head performance comparison of self-collected nasal
425 versus professional-collected nasopharyngeal swab for a WHO-listed SARS-CoV-2 antigen-detecting rapid
426 diagnostic test. *Med Microbiol Immunol*. Aug 2021;210(4):181-186. doi:10.1007/s00430-021-00710-9
- 427 19. Lindner AK, Nikolai O, Kausch F, et al. Head-to-head comparison of SARS-CoV-2 antigen-detecting
428 rapid test with self-collected nasal swab versus professional-collected nasopharyngeal swab. *Eur Respir J*. Apr
429 2021;57(4)doi:10.1183/13993003.03961-2020
- 430 20. Allen N, Brady M, Carrion Martin AI, et al. Serological markers of SARS-CoV-2 infection; anti-
431 nucleocapsid antibody positivity may not be the ideal marker of natural infection in vaccinated individuals. *J*
432 *Infect*. Oct 2021;83(4):e9-e10. doi:10.1016/j.jinf.2021.08.012
- 433 21. Igloi Z, Velzing J, van Beek J, et al. Clinical Evaluation of Roche SD Biosensor Rapid Antigen Test for
434 SARS-CoV-2 in Municipal Health Service Testing Site, the Netherlands. *Emerg Infect Dis*. May
435 2021;27(5):1323-1329. doi:10.3201/eid2705.204688
- 436 22. van Kampen JJA, van de Vijver D, Fraaij PLA, et al. Duration and key determinants of infectious virus
437 shedding in hospitalized patients with coronavirus disease-2019 (COVID-19). *Nat Commun*. Jan 11
438 2021;12(1):267. doi:10.1038/s41467-020-20568-4
- 439

440
441
442

Table 1 Baseline characteristics of the symptomatic study population in the Omicron period, stratified by rapid antigen test.

Test result available from the reference test and ...	Flowflex	MPBio		Clinitest	
Test-site location	Rotterdam	Tilburg		Roosendaal	
Type of sampling	Nasal	Nasal	OP-N	Nasal	OP-N
Inclusion dates Omicron period (>90% Omicron)	Jan 12 – Feb 3	Jan 12 – Jan 18	Jan 26 – Feb 10	Jan 12 – Jan 23	Jan 25 – Feb 8
Sample size	N = 620	N = 820	N = 543	N = 726	N = 653
Age [years], mean (SD)	37 (14)	38 (14)	36 (13)	39 (14)	40 (13)
Range (min-max)	16-77	16-85	16-72	16-81	16-87
Sex, female, n (%) [†]	357 (57.6)	524 (63.9)	375 (69.1)	449 (61.8)	437 (66.9)
Reported symptoms at the time of testing, n (%)	620 (100)	820 (100)	543 (100)	726 (100)	653 (100)
Self-reported reasons for testing, n (%) [#]					
Positive self-test	279 (45.0)	239 (29.1)	288 (53.0)	257 (35.4)	290 (44.4)
Symptoms	405 (65.3)	510 (62.2)	354 (65.2)	459 (63.2)	390 (59.7)
Close contact	72 (11.6)	170 (20.7)	58 (10.7)	144 (19.8)	99 (15.2)
Other reason	49 (7.9)	54 (6.6)	15 (2.8)	29 (4.0)	24 (3.7)
Vaccination status					
Not vaccinated	75 (12.1)	68 (8.3)	56 (10.3)	90 (12.4)	66 (10.1)
Vaccinated with at least one dose, n (%)	545 (87.9)	752 (91.7)	487 (89.7)	636 (87.6)	586 (89.7)
Number of vaccinations received, n (%) [§]					
1	38 (7.0)	86 (11.4)	40 (8.2)	52 (8.2)	40 (6.8)
2	233 (42.8)	329 (43.8)	184 (37.8)	334 (52.5)	214 (36.5)
3	274 (50.3)	336 (44.7)	263 (54.0)	248 (39.0)	332 (56.7)
Unknown	0 (0)	1 (0.1)	0 (0)	2 (0.3)	0 (0)
Type of initial vaccination series, n (%) [§]					
Pfizer	438 (80.4)	502 (66.8)	341 (70.0)	410 (64.5)	352 (60.1)
Moderna	34 (6.2)	96 (12.8)	43 (8.8)	116 (18.2)	104 (17.7)
Astra Zeneca	32 (5.9)	88 (11.7)	51 (10.5)	62 (9.7)	82 (14.0)
Janssen	40 (7.3)	62 (8.2)	50 (10.3)	45 (7.1)	44 (7.5)
Unknown/Other	1 (0.2)	4 (0.5)	2 (0.4)	3 (0.5)	4 (0.7)
Type of booster vaccine, n (%) [§]					
Pfizer	200 (36.7)	219 (29.1)	214 (43.9)	168 (26.4)	256 (43.7)
Moderna	99 (18.2)	137 (18.2)	76 (15.6)	93 (14.6)	93 (15.9)
No booster received	242 (44.4)	388 (51.6)	187 (38.4)	366 (57.5)	225 (38.4)
Unknown	4 (0.7)	8 (1.1)	10 (2.1)	9 (1.4)	12 (2.0)
At least one prior SARS-CoV-2 infection, n (%)	148 (23.9)	185 (22.6)	135 (24.9)	127 (17.5)	121 (18.5)
Less than 2 months ago	14 (9.5)	16 (8.6)	12 (8.9)	13 (10.2)	11 (9.1)
2 to 6 months ago	24 (16.2)	22 (11.9)	25 (18.5)	7 (5.5)	34 (28.1)
6 to 12 months ago	62 (41.9)	84 (45.4)	50 (37.0)	40 (31.5)	33 (27.3)
More than 12 months ago	48 (32.4)	63 (34.1)	48 (35.6)	66 (52.0)	43 (35.5)
Unknown	0 (0)	0 (0)	0 (0)	1 (0.8)	0 (0)
Symptom onset, n (%)					
On day of sampling	48 (7.7)	71 (8.7)	59 (10.9)	42 (5.8)	40 (6.1)
A day before sampling	239 (38.5)	281 (34.3)	179 (33.0)	201 (27.7)	178 (27.3)
Two days before sampling	192 (31.0)	257 (31.3)	157 (28.9)	273 (37.6)	229 (35.1)
Three or more days before sampling	140 (22.6)	208 (25.4)	148 (27.3)	210 (28.9)	205 (31.4)
Unknown	1 (0.2)	3 (0.4)	0 (0)	0 (0)	1 (0.2)
Type of symptoms (self-reported), n (%) [#]					
Common cold	543 (87.6)	717 (87.4)	499 (91.9)	613 (84.4)	583 (89.3)
Shortness of breath	93 (15.0)	109 (13.3)	87 (16.0)	99 (13.6)	102 (15.6)
Fever	143 (23.1)	141 (17.2)	120 (22.1)	162 (22.3)	157 (24.0)
Coughing	310 (50.0)	378 (46.1)	283 (52.1)	386 (53.2)	350 (53.6)
Loss of taste or smell	26 (4.2)	27 (3.3)	20 (3.7)	25 (3.4)	29 (4.4)
Muscle ache	137 (22.1)	154 (18.8)	122 (22.5)	192 (26.4)	152 (23.3)
Other symptoms	88 (14.2)	123 (15.0)	85 (15.7)	116 (16.0)	108 (16.5)
Previous experience with using self-tests, n (%)	589 (95.2)	791 (96.7)	535 (98.5)	698 (96.3)	627 (96.2)
Performed last self-test, n (%) [§]					
Less than 7 days ago	501 (85.1)	661 (83.6)	461 (86.2)	588 (84.2)	545 (86.9)
1 to 4 weeks ago	64 (10.9)	92 (11.6)	51 (9.5)	75 (10.7)	47 (7.5)
More than 1 months ago	23 (3.9)	37 (4.7)	22 (4.1)	35 (5.1)	34 (5.4)
Unknown	1 (0.2)	1 (0.1)	9 (0.2)	0 (0)	1 (0.2)
Number of ever performed self-tests, n (%)					
1-3	110 (18.7)	171 (21.6)	90 (16.8)	193 (27.7)	126 (20.2)
4-6	125 (21.2)	198 (25.1)	128 (23.9)	208 (29.8)	182 (29.1)
7-10	158 (26.8)	181 (22.9)	118 (22.1)	153 (21.9)	130 (20.8)
>10	196 (33.3)	240 (30.4)	199 (37.2)	144 (20.6)	187 (29.9)

443
444
445
446
447
448

Flowflex=Acon Labs Flowflex COVID-19 Antigen Home Test; MPBio=MP Biomedicals Rapid SARS-CoV-2 Antigen Test Card; Clinitest=Siemens-Healthineers CLINITEST Rapid COVID-19 Antigen Test; SD=standard deviation.

[#] Individuals could report more than one reason for testing, or more than one symptom, respectively. Participants were asked separately whether they had symptoms on the day of study participation. All participants reported symptoms but only 60-65% reported having symptoms as a reason for testing.

[§] Percentage calculated as proportion of those vaccinated, or those that had previous experience in performing a self-test, respectively.

449 **Table 2 Diagnostic accuracy parameters for the three Ag-RDTs in symptomatic individuals in the**
 450 **Omicron period. Values are percentages (95% confidence interval) unless stated otherwise.**
 451

	Sampling	N	RT-PCR test positivity* [%]	Sensitivity [%] (95%CI)	Specificity [%] (95%CI)	PPV [%] (95%CI)	NPV [%] (95%CI)
Flowflex							
Primary analysis	N	620	66.0	79.0 (74.7-82.8)	97.2 (93.9-98.9)	98.2 (96.1-99.3)	70.4 (64.8-75.6)
Secondary (stratified) analyses:							
Viral load cut-off¶	N	620	58.2	85.6 (81.5-89.1)	92.3 (88.3-95.2)	93.9 (90.8-96.2)	82.1 (77.2-86.4)
Vaccinated (at least once):							
Yes	N	545	64.2	78.6 (73.9-82.8)	96.9 (93.4-98.9)	97.9 (95.4-99.2)	71.6 (65.7-77.0)
No	N	75	78.7	81.4 (69.1-90.3)	100 (79.4-100)	100 (92.6-100)	59.3 (38.8-77.6)
Previous SARS-CoV-2 infection:							
Yes	N	148	63.5	67.0 (56.6-76.4)	98.1 (90.1-100)	98.4 (91.6-100)	63.1 (51.9-73.4)
No	N	472	66.7	82.5 (77.9-86.6)	96.8 (92.7-99.0)	98.1 (95.7-99.4)	73.4 (66.9-79.3)
Sex:							
Female	N	357	63.9	75.0 (68.9-80.5)	98.4 (94.5-99.8)	98.8 (95.9-99.9)	69.0 (61.8-75.6)
Male	N	260	68.5	83.7 (77.4-88.8)	95.1 (88.0-98.7)	97.4 (93.4-99.3)	72.9 (63.4-81.0)
Age [years]:							
16-40	N	385	66.0	79.1 (73.6-84.0)	96.2 (94.4-99.2)	97.6 (94.4-99.2)	70.4 (63.1-77.0)
>40	N	235	66.0	78.7 (71.4-84.9)	98.8 (93.2-100)	99.2 (95.6-100)	70.5 (61.2-78.8)
Reason for testing was positive self-test:							
Yes	N	279	94.6	93.6 (89.9-96.2)	80.0 (51.9-95.7)	98.8 (96.5-99.8)	41.4 (23.5-61.1)
No	N	341	42.5	52.4 (44.0-60.8)	98.5 (95.6-99.7)	96.2 (89.3-99.2)	73.7 (67.9-78.9)
MPBio							
Primary analysis	N	820	48.2	69.9 (65.1-74.4)	98.8 (97.3-99.6)	98.2 (95.9-99.4)	77.9 (74.2-81.4)
	OP-N	543	67.2	83.0 (78.8-86.7)	97.8 (94.3-99.4)	98.7 (94.3-99.4)	73.7 (67.6-79.2)
Secondary (stratified) analyses:							
Viral load cut-off¶	N	819	41.5	78.5 (73.8-82.8)	97.1 (95.1-98.4)	95.0 (91.8-97.2)	86.4 (83.2-89.2)
	OP-N	543	58.0	89.8 (86.0-92.9)	89.5 (84.7-93.1)	92.2 (88.6-94.9)	86.4 (81.4-90.5)
Vaccinated (at least one):							
Yes	N	752	47.7	68.2 (63.2-73.0)	99.2 (97.8-99.8)	98.8 (96.5-99.7)	77.4 (73.5-81.0)
	OP-N	487	66.9	82.5 (77.9-86.5)	97.5 (93.8-99.3)	98.5 (96.3-99.6)	73.4 (66.9-79.2)
No	N	68	52.9	86.1 (70.5-95.3)	93.8 (79.2-99.2)	93.9 (79.8-99.3)	85.7 (69.7-95.2)
	OP-N	56	69.6	87.2 (72.6-95.7)	100 (80.5-100)	100 (89.7-100)	77.3 (54.6-92.2)
Previous SARS-CoV-2 infection:							
Yes	N	185	35.7	60.6 (47.8-72.4)	100 (96.9-100)	100 (91.2-100)	82.1 (74.8-87.9)
	OP-N	135	65.2	85.2 (76.1-91.9)	97.9 (88.7-99.9)	98.7 (92.9-100)	78.0 (65.3-87.7)
No	N	634	51.9	71.7 (66.5-76.5)	98.4 (96.2-99.5)	97.9 (95.2-99.3)	76.3 (71.8-80.5)
	OP-N	408	67.9	82.3 (77.3-86.6)	97.7 (93.5-99.5)	98.7 (96.3-99.7)	72.3 (65.1-78.8)
Sex:							
Female	N	524	45.0	70.3 (64.1-76.1)	99.0 (97.0-99.8)	98.2 (94.9-99.6)	80.3 (75.8-84.3)
	OP-N	375	65.3	82.4 (77.1-87.0)	97.7 (93.4-99.5)	98.5 (95.8-99.7)	74.7 (67.5-81.0)
Male	N	295	53.9	69.2 (61.4-76.3)	98.5 (94.8-99.8)	98.2 (93.7-99.8)	73.2 (66.2-79.5)
	OP-N	166	71.1	83.9 (76.0-80.0)	97.9 (88.9-99.9)	99.0 (94.6-100)	71.2 (58.7-81.7)
Age [years]:							
16-40	N	475	49.5	75.3 (69.3-80.7)	99.2 (97.0-99.9)	98.9 (96.0-99.9)	80.4 (75.4-84.8)
	OP-N	335	68.4	82.5 (77.0-87.2)	97.2 (92.0-99.4)	98.4 (95.5-99.7)	72.0 (63.9-79.2)
>40	N	345	46.4	61.9 (53.9-69.4)	98.4 (95.3-99.7)	97.1 (91.6-99.4)	74.9 (69.0-80.2)
	OP-N	208	65.4	83.8 (76.5-89.6)	98.6 (92.5-100)	99.1 (95.3-100)	76.3 (66.4-84.5)
Reasons for testing was positive self-test:							
Yes	N	239	94.6	83.6 (78.1-88.2)	84.6 (54.6-98.1)	99.0 (96.3-99.9)	22.9 (12.0-37.3)
	OP-N	288	96.2	87.4 (82.9-91.0)	90.9 (58.7-99.8)	99.6 (97.7-100)	22.2 (11.2-37.1)
No	N	581	29.1	51.5 (43.7-59.2)	99.3 (97.9-99.8)	96.7 (90.6-99.3)	83.3 (79.7-86.5)
	OP-N	255	34.5	69.3 (58.6-78.7)	98.2 (94.8-99.6)	95.3 (86.9-99.0)	85.9 (80.1-90.5)
Clintest							
Primary analysis	N	726	59.1	70.2 (65.6-74.5)	99.3 (97.6-99.9)	99.3 (97.6-99.9)	69.7 (65.1-74.1)
	OP-N	653	64.6	77.3 (72.9-81.2)	97.0 (93.9-98.8)	97.9 (95.7-99.2)	70.0 (64.7-75.0)
Secondary (stratified) analyses:							
Viral load cut-off¶	N	711	52.0	77.0 (72.4-81.2)	97.4 (95.0-98.8)	96.9 (94.3-98.6)	79.6 (75.4-83.4)
	OP-N	653	57.3	83.7 (79.5-87.3)	92.8 (89.1-95.6)	94.0 (90.9-96.3)	80.9 (76.2-85.1)
Vaccinated (at least one):							
Yes	N	635	58.6	68.5 (63.6-73.2)	100 (98.6-100)	100 (98.6-100)	69.2 (64.3-73.8)
	OP-N	586	64.7	77.0 (72.5-81.2)	98.1 (95.1-99.5)	98.6 (96.6-99.6)	70.0 (64.4-75.2)
No	N	90	63.3	80.7 (68.1-90.0)	93.9 (79.8-99.3)	95.8 (85.7-99.5)	73.8 (58.0-86.1)
	OP-N	66	65.2	79.1 (64.0-90.0)	91.3 (72.0-98.9)	94.4 (81.3-99.3)	70.0 (50.6-85.3)
Previous SARS-CoV-2 infection:							
Yes	N	127	49.6	60.3 (47.2-72.4)	96.9 (89.2-99.6)	95.0 (83.1-99.4)	71.3 (60.6-80.5)
	OP-N	121	49.6	66.7 (53.3-78.3)	95.1 (86.3-99.0)	93.0 (80.9-98.5)	74.4 (63.2-83.6)
No	N	599	61.1	71.9 (66.9-76.4)	100 (98.4-100)	100 (98.6-100)	69.3 (64.1-74.2)
	OP-N	532	68.0	79.0 (74.4-83.1)	97.6 (94.1-99.4)	98.6 (96.5-99.6)	68.6 (62.3-74.4)
Sex:							
Female	N	449	57.7	65.3 (59.1-71.0)	98.9 (96.2-99.9)	98.8 (95.8-99.9)	67.6 (61.8-73.1)
	OP-N	437	60.2	74.9 (69.2-80.0)	96.6 (92.6-98.7)	97.0 (93.7-98.9)	71.8 (65.6-77.5)
Male	N	276	61.2	77.5 (70.5-83.6)	100 (96.6-100)	100 (97.2-100)	73.8 (65.8-80.7)

	OP-N	213	73.7	80.9 (73.9-86.7)	98.2 (90.4-100)	99.2 (95.7-100)	64.7 (53.6-74.8)
Age [years]:							
16-40	N	385	62.1	71.1 (64.9-76.8)	99.3 (96.2-100)	99.4 (96.8-100)	67.8 (61.0-74.0)
	OP-N	339	64.9	79.1 (73.1-84.3)	96.6 (91.6-99.1)	97.8 (94.3-99.4)	71.4 (63.8-78.3)
>40	N	341	55.7	68.9 (61.8-75.4)	99.3 (96.4-100)	99.2 (95.9-100)	71.8 (65.1-77.8)
	OP-N	313	64.5	75.2 (68.7-81.0)	97.3 (92.3-99.4)	98.1 (94.4-99.6)	68.4 (60.5-75.5)
Reason for testing was positive self-test:							
Yes	N	257	95.3	85.7 (80.7-89.8)	91.7 (61.5-99.8)	99.5 (97.4-100)	23.9 (12.6-38.8)
	OP-N	290	96.6	86.1 (81.5-89.9)	80.0 (44.4-97.5)	99.2 (97.1-99.9)	17.0 (7.6-30.8)
No	N	469	39.2	49.5 (42.0-56.9)	99.6 (98.1-100)	98.9 (94.1-100)	75.3 (70.7-79.6)
	OP-N	363	39.1	59.9 (51.3-68.0)	97.7 (94.8-99.3)	94.4 (87.5-98.2)	79.1 (73.8-83.8)

452 Flowflex=Acon Labs Flowflex COVID-19 Antigen Home Test; MPBio=MP Biomedicals Rapid SARS-CoV-2 Antigen Test Card;
453 Clinitest=Siemens-Healthineers CLINITEST Rapid COVID-19 Antigen Test; NPV=negative predictive value; PPV=positive predictive
454 value; N = nasal sampling; OP-N = combined oropharyngeal and nasal sampling.
455 *True SARS-CoV-2 infections based on RT-PCR test result.
456 ¶ Defined as viral load above which 95% of individuals with a positive RT-PCR test result had a positive viral culture⁶, which was 5.2 log₁₀
457 SARS-CoV-2 E-gene copies/mL.
458

459 **Figure legend**

460

461 **Figure 1** Flow of study participants in the omicron period, presented separately for nasal (top) and
462 oropharyngeal plus nasal sampling (bottom). Flowflex = the Acon Labs Flowflex COVID-19 Antigen Home
463 Test; MPBio = the MP Biomedicals Rapid SARS-CoV-2 Antigen Test Card; Clinitest = the Siemens-
464 Healthineers CLINITEST Rapid COVID-19 Antigen Test. “Ag-RDT inconclusive” is a combination of Ag-
465 RDTs that showed no control line, test tubes that were dropped, an Ag-RDTs that provided a result participants
466 had difficulties to interpret (e.g., very light line at the “T”).

467

468 **Figure 2** Sensitivities with 95% confidence intervals of the antigen rapid test-RT-PCR reference standard test
469 comparisons stratified according to COVID-19 vaccination status, previous infection status, sex, and age, with
470 nasal sampling for all three tests (top) and oropharyngeal plus nasal sampling for MPBio and Clinitest (bottom).
471 The vertical line indicates the sensitivity of the Ag-RDT in the respective overall study population, and the
472 number of positive RT-PCR tests out of the total or subgroup between parentheses.

473

474 **Figure 3** Sensitivities (dots) and specificities (triangles) with 95% confidence intervals of the antigen rapid test
475 with nasal sampling-RT-PCR reference standard test comparison by week of inclusion, before (left) and after
476 application of a viral load cut-off (right). The red bars indicate the percentage of the Omicron variant according
477 to the national pathogen surveillance, while the numbers indicate the number of participants included in each
478 week.

479

480 **Acknowledgements**

481 We thank the participants, and study staff at the participating public health service test-sites, participating
482 laboratories, the University Medical Center Utrecht, and RIVM for their contributions to the study. A special
483 thanks to Esther Stiefelhagen, Renske Beekes, Sophie Neeleman, Eveline Westergaard, Roel Ensing, Wendy
484 Mouthaan, and Timo Boelsums. Written permission was obtained from all five of them to list their names. ES,
485 RB, SN, RE, WH, LB, and TB did not receive any compensation for their contributions.

486 **Contributors**

487 KGMM initiated the study. ES, RPV, LH, IKV, WvdB, SDP, EL, MH, RM, CW, IV, CRSN-I, SvdH, JAJWK,
488 JHHMvdW, and KGMM designed the study. ES, RPV, CRSN-I, and KGMM coordinated the study. WvdB,
489 SDP, VFZ, LS, and MK were responsible for laboratory analyses and data processing. ES, RPV, and KGMM
490 verified the underlying data. ES performed the statistical analysis and verified the underlying data in close
491 collaboration with RPV and KGMM. ES, RPV, JHHMvdW, and KGMM drafted the first version of the
492 manuscript. All authors critically read the manuscript and provided feedback. All authors approved the
493 submission of the current version of the manuscript. The corresponding author attests that all listed authors meet
494 authorship criteria and that no others meeting the criteria have been omitted.

495 **Declaration of interest**

496 All authors have completed the ICMJE uniform disclosure form at www.icmje.org/coi_disclosure.pdf and
497 declare: support from the Dutch Ministry of Health, Welfare, and Sport for the submitted work; no financial
498 relationships with any organisations that might have an interest in the submitted work in the previous three years;
499 no other relationships or activities that could appear to have influenced the submitted work.

500 **Ethical approval**

501 Not required because the study was judged by the METC Utrecht to be outside the scope of the Dutch Medical
502 Research Involving Human Subjects Act (protocol No 21-818 /C). All participants signed an informed consent
503 form before any study procedure.

504 **Data sharing**

505 Individual participant data collected during the study will be available, after deidentification of all participants.
506 Data will be available to researchers who provide a methodologically sound proposal to achieve the aims in the
507 approved proposal. Proposals should be directed to the corresponding author to gain access to the data. Data
508 requestors will need to sign a data sharing agreement.

509 The corresponding author (KGMM, the manuscript's guarantor) affirms that the manuscript is an honest,

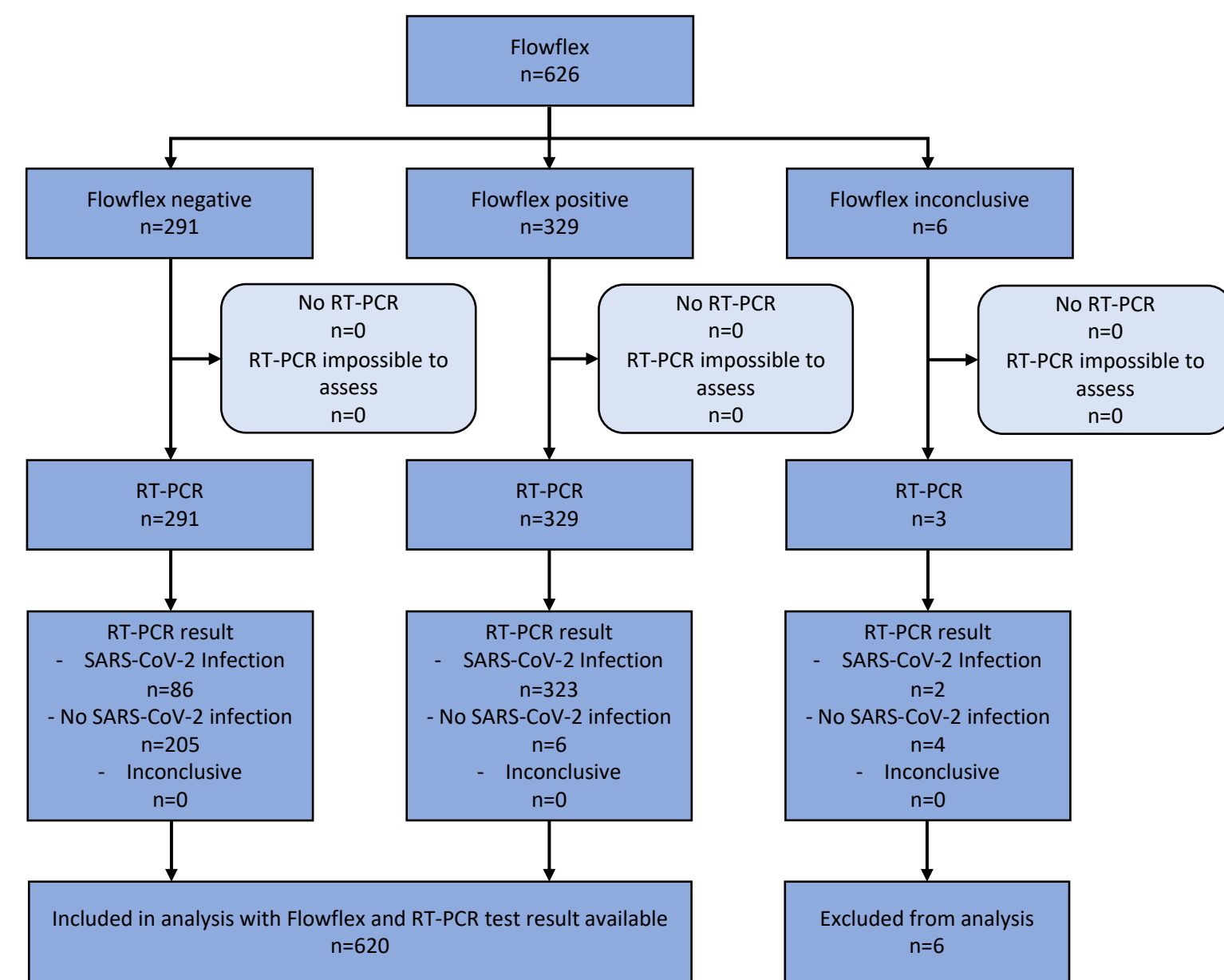
510 accurate, and transparent account of the study being reported; that no important aspects of the study have been
511 omitted; and that any discrepancies from the study as originally planned (and, if relevant, registered) have been
512 explained.

513 **Additional information**

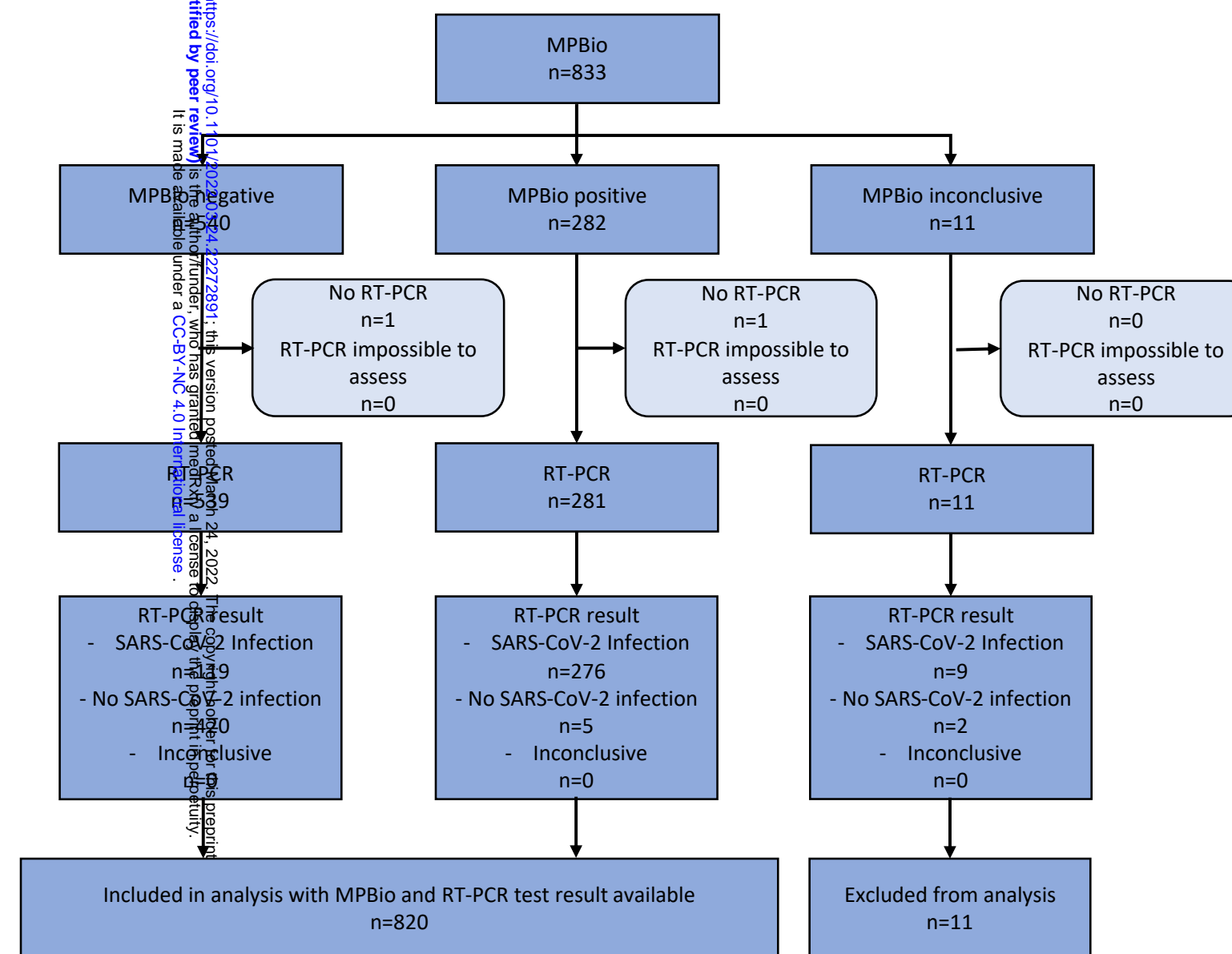
514 The study protocol is available upon request by contacting Karel Moons at k.g.m.moons@umcutrecht.nl

Nasal sampling

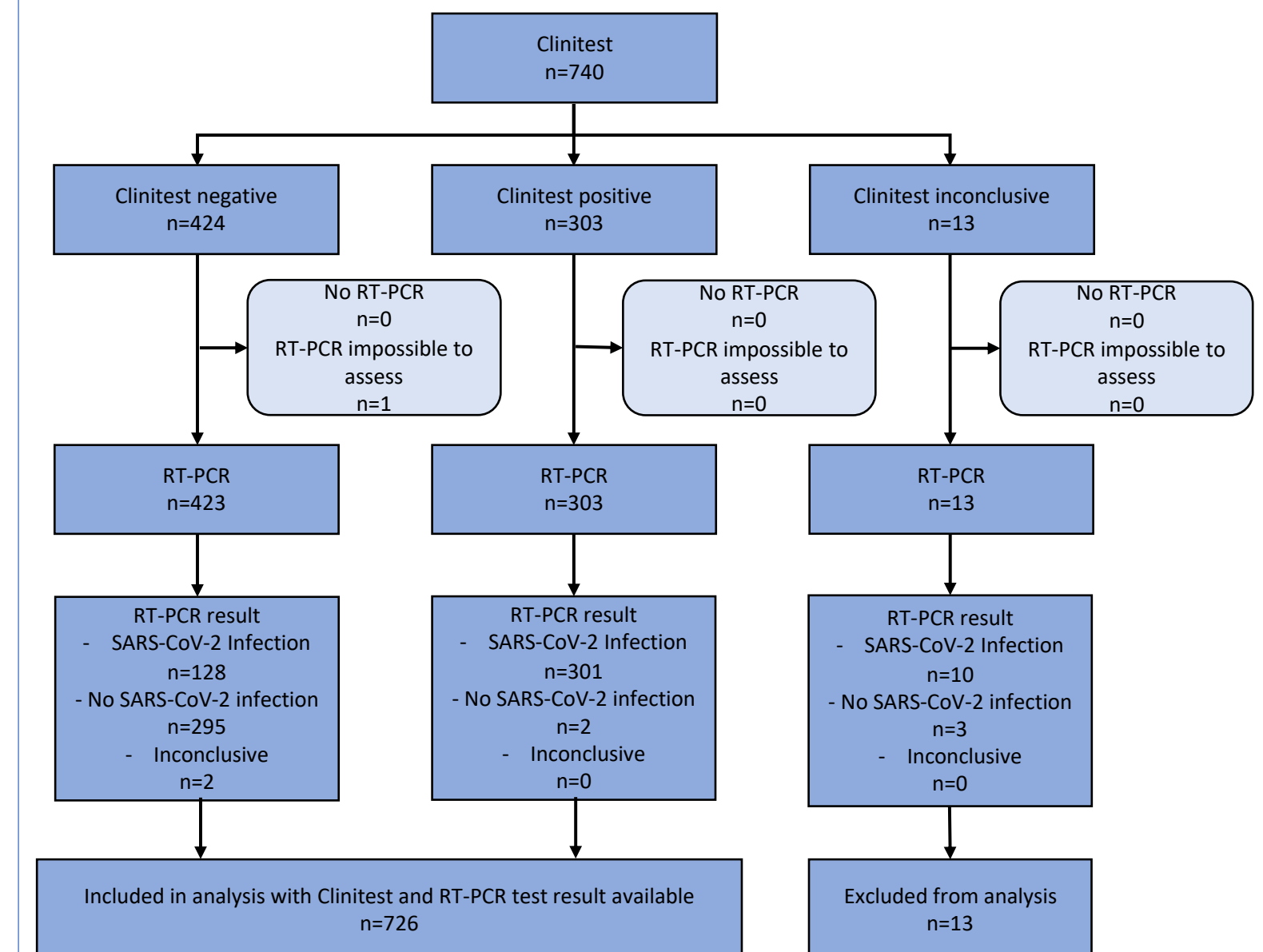
Flowflex (Rotterdam)



MPBio (Tilburg)

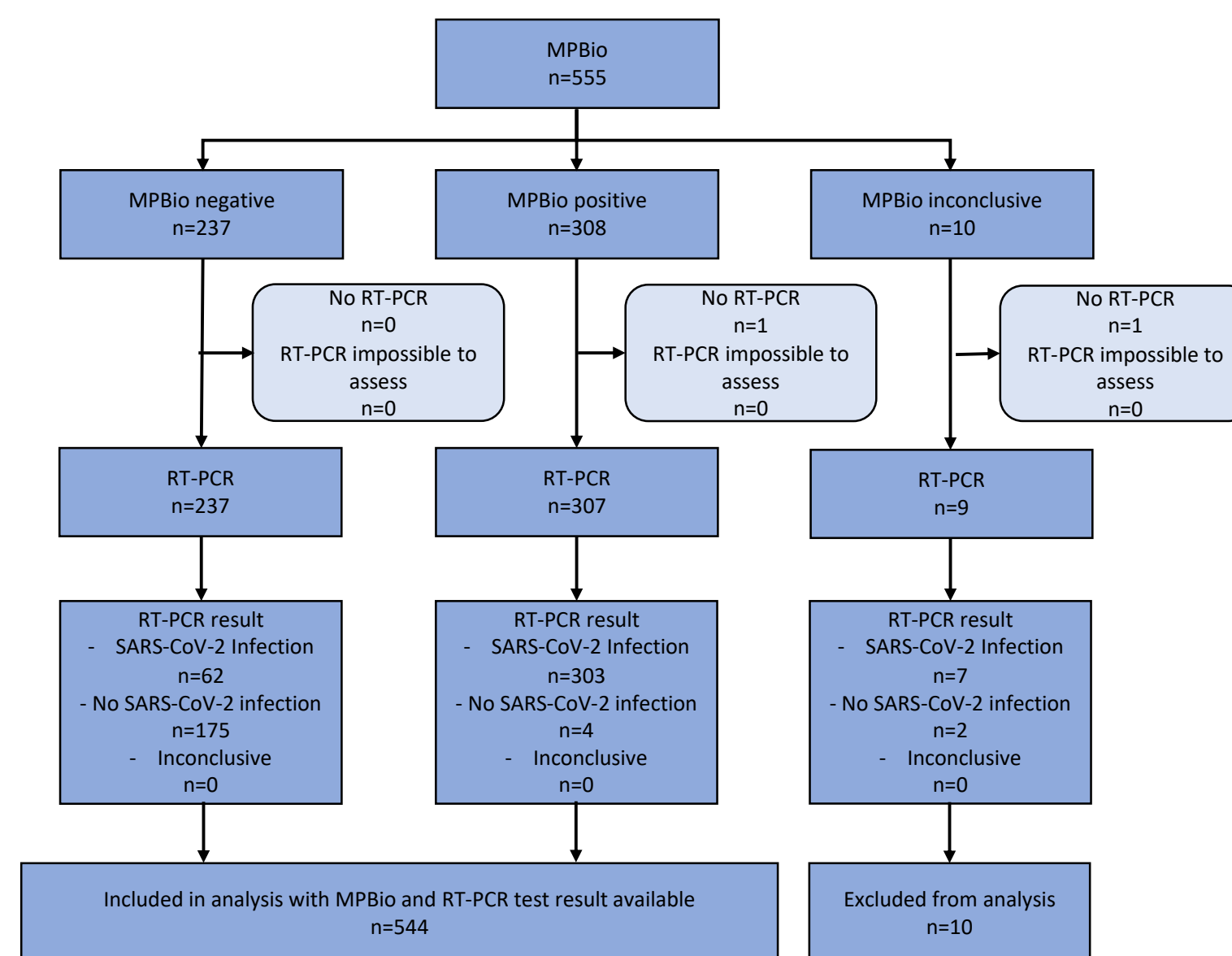


Clinitest (Roosendaal)

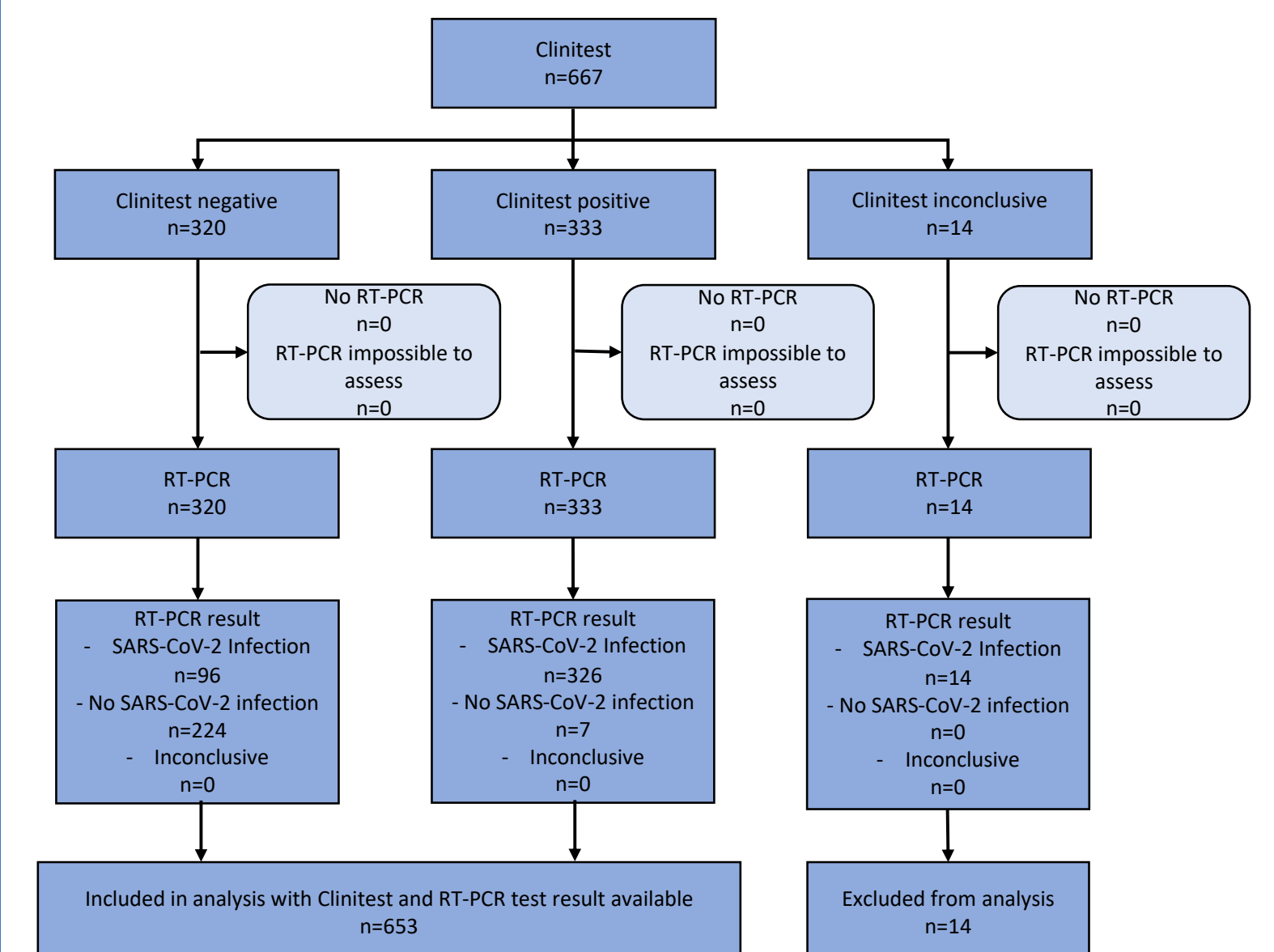


Oropharyngeal and nasal sampling

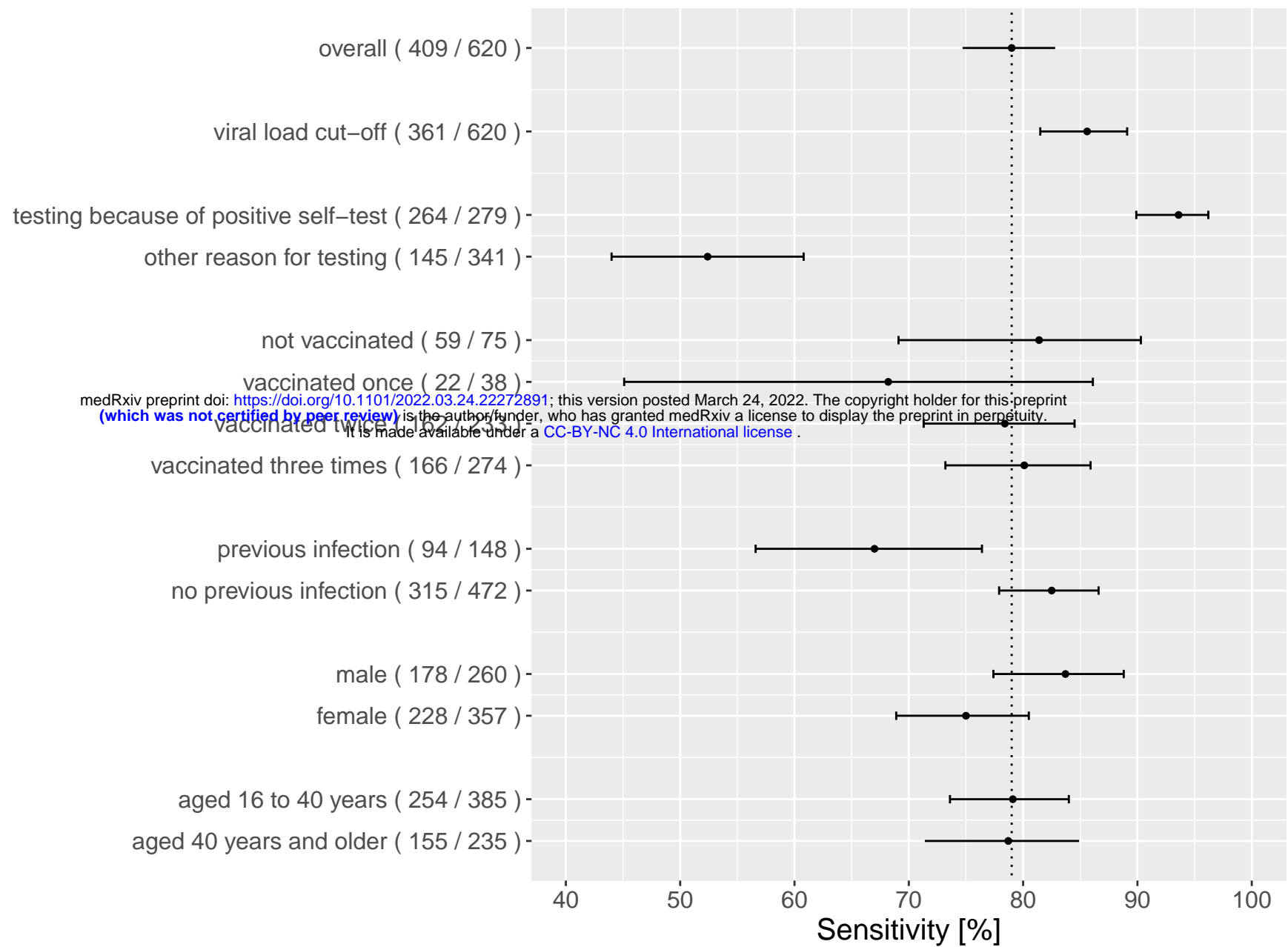
MPBio (Tilburg)



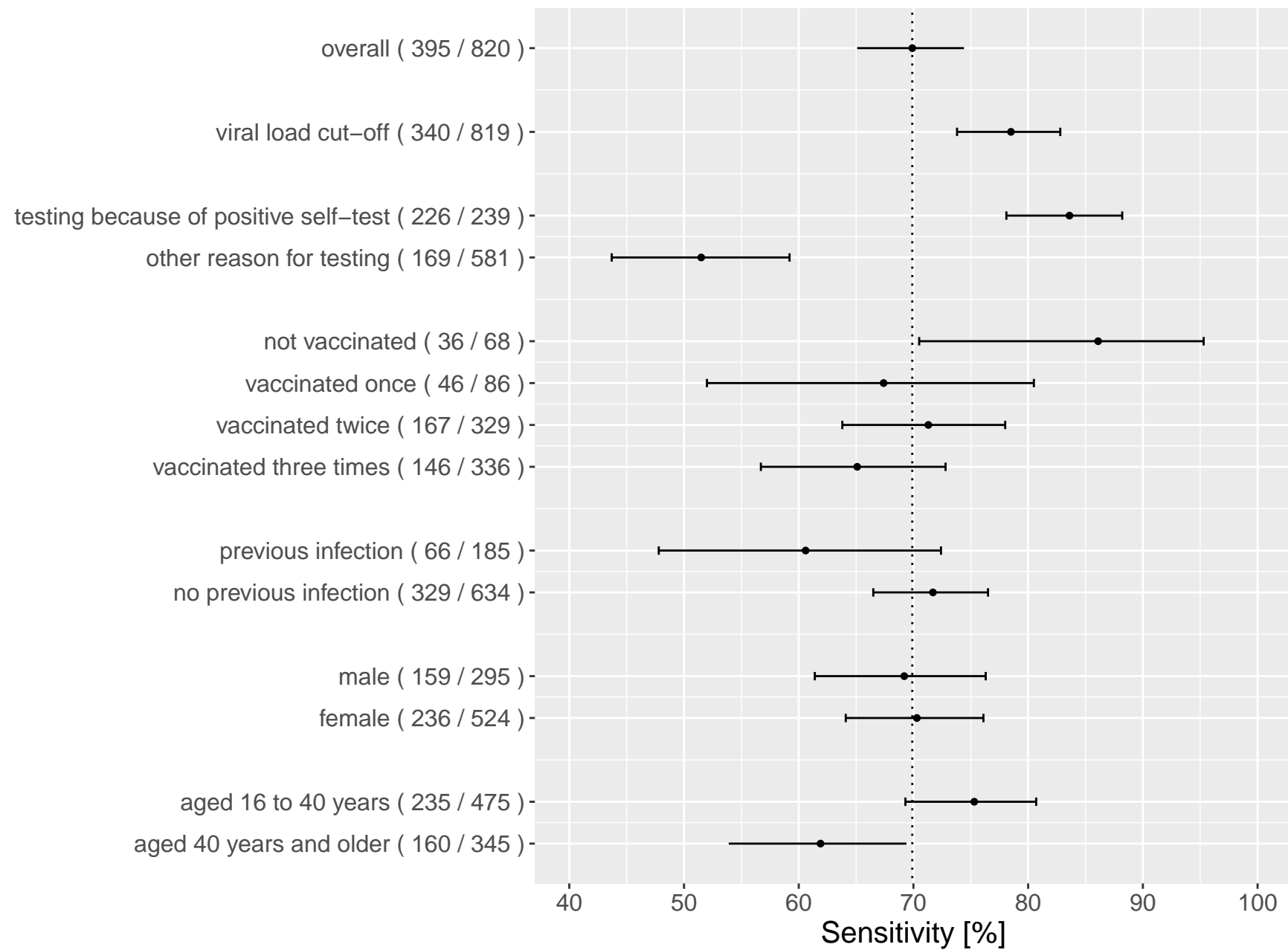
Clinitest (Roosendaal)



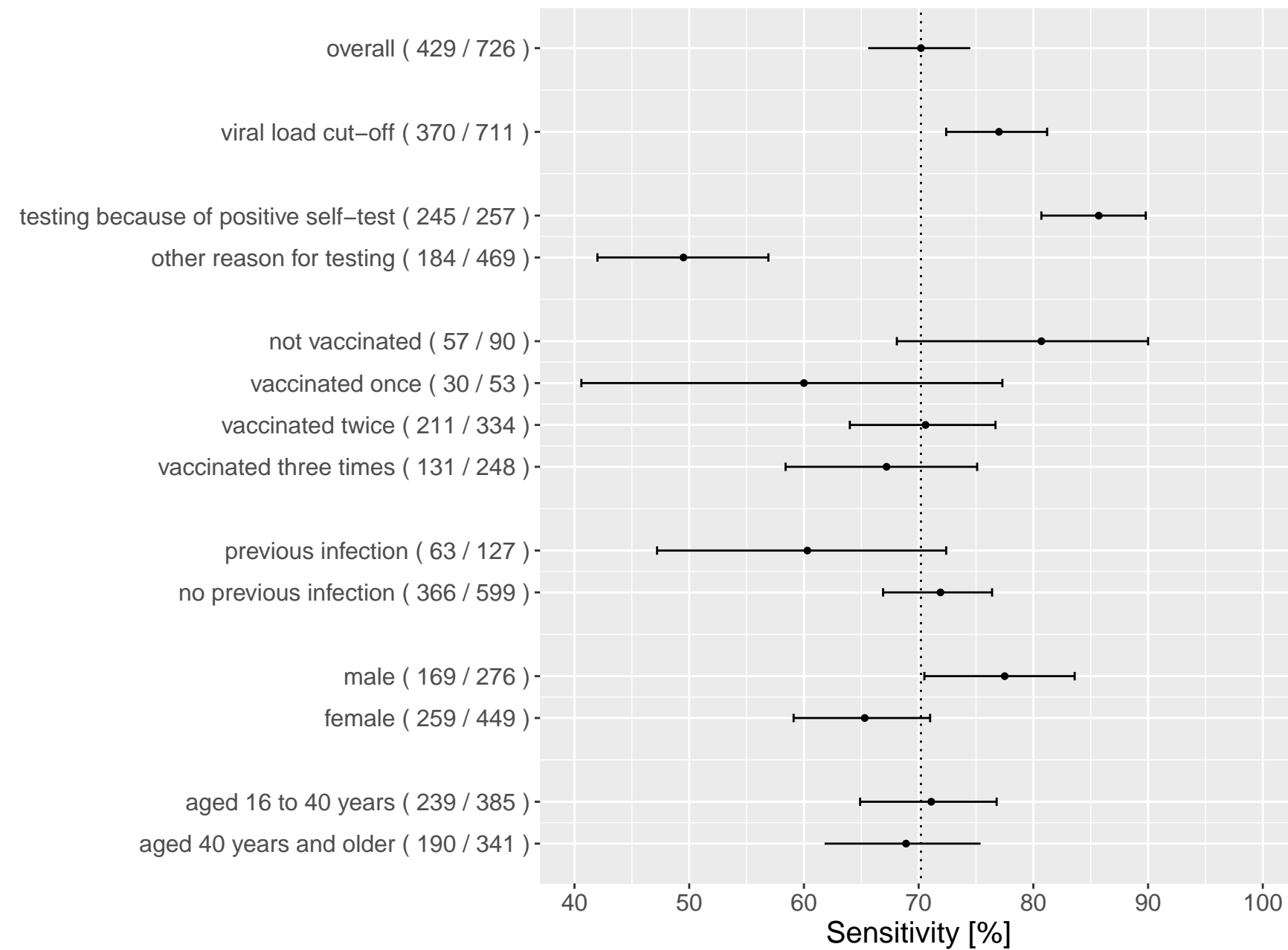
Flowflex, nasal sampling



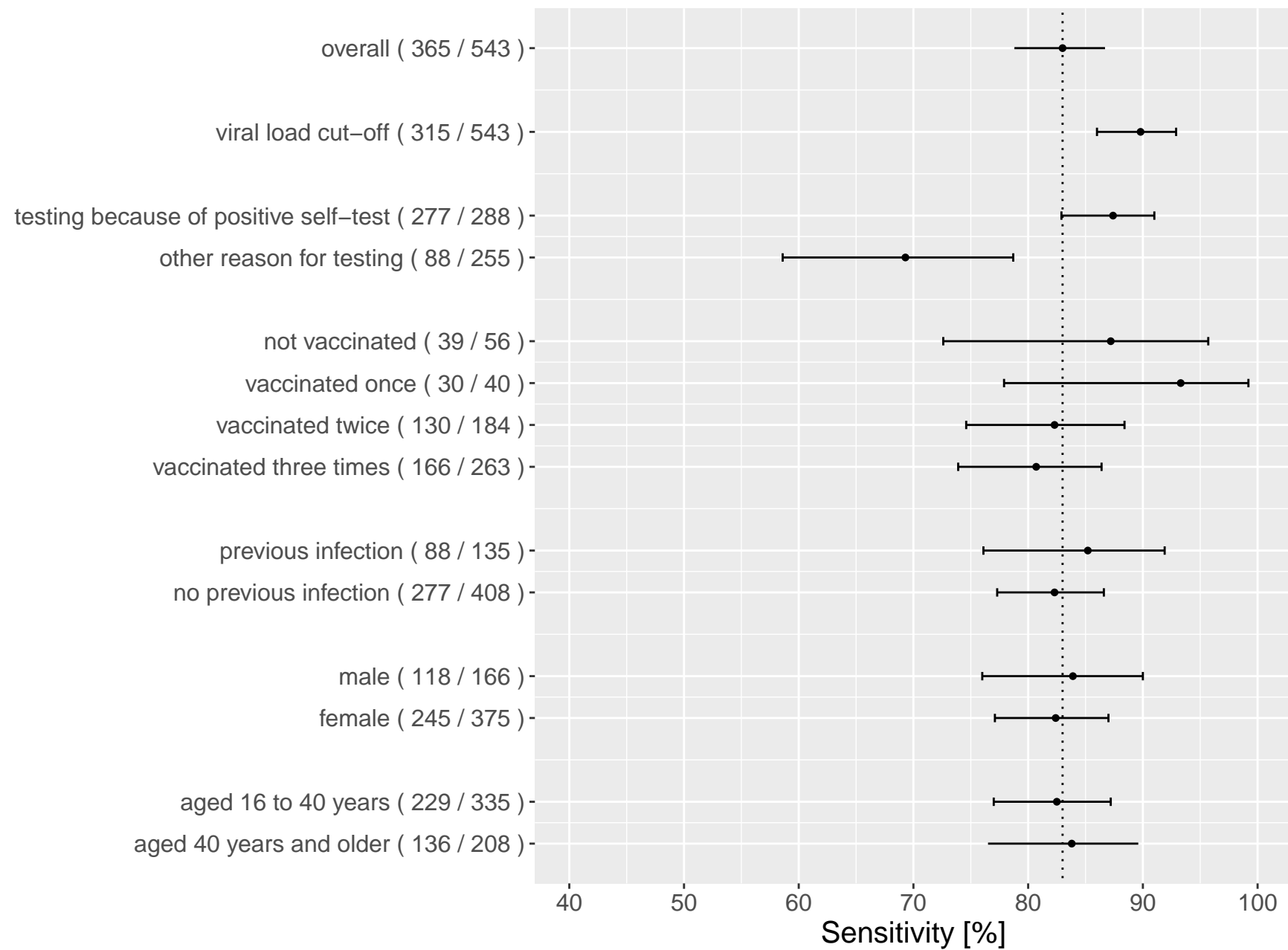
MPBio, nasal sampling



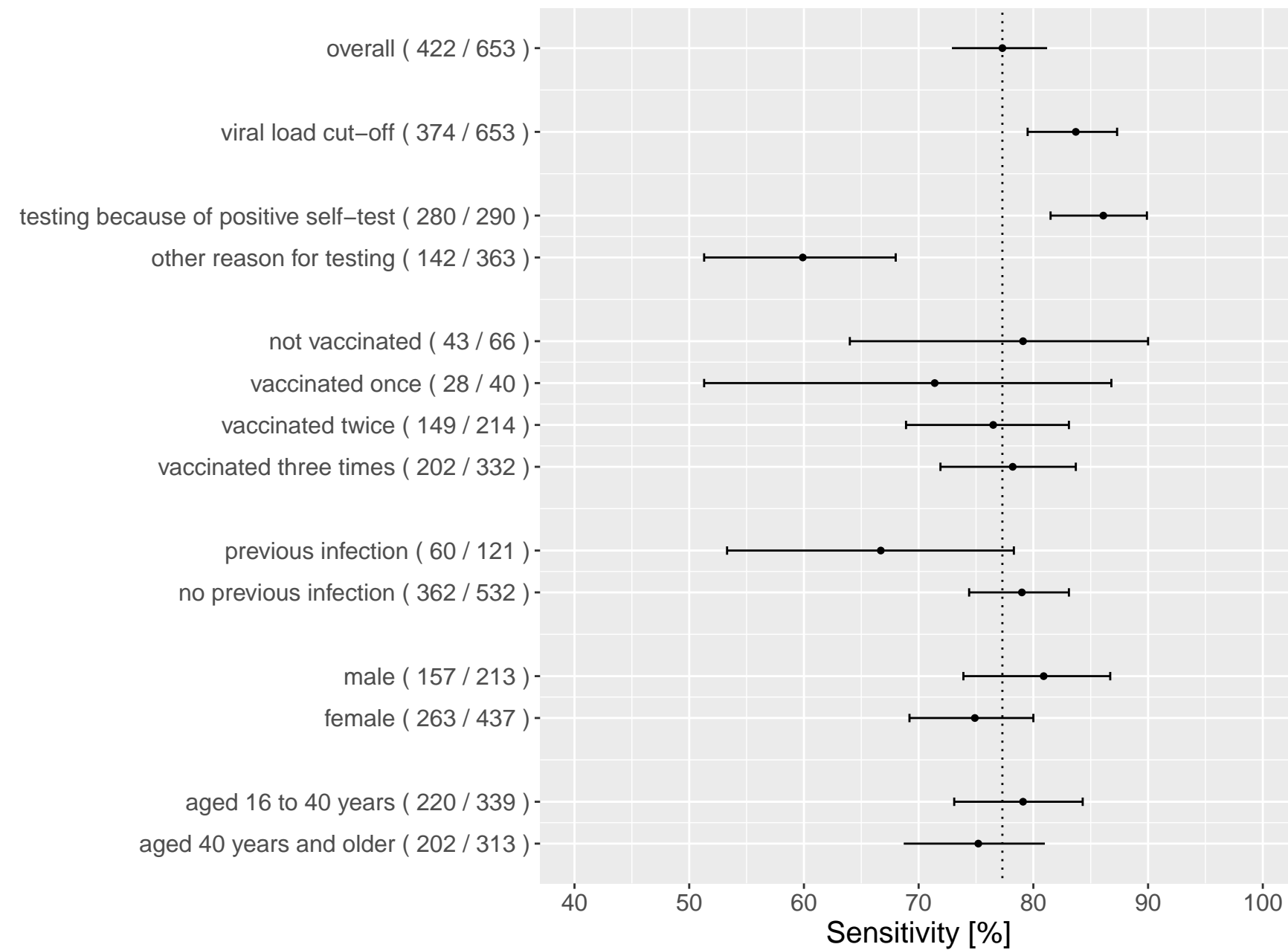
Clinitest, nasal sampling



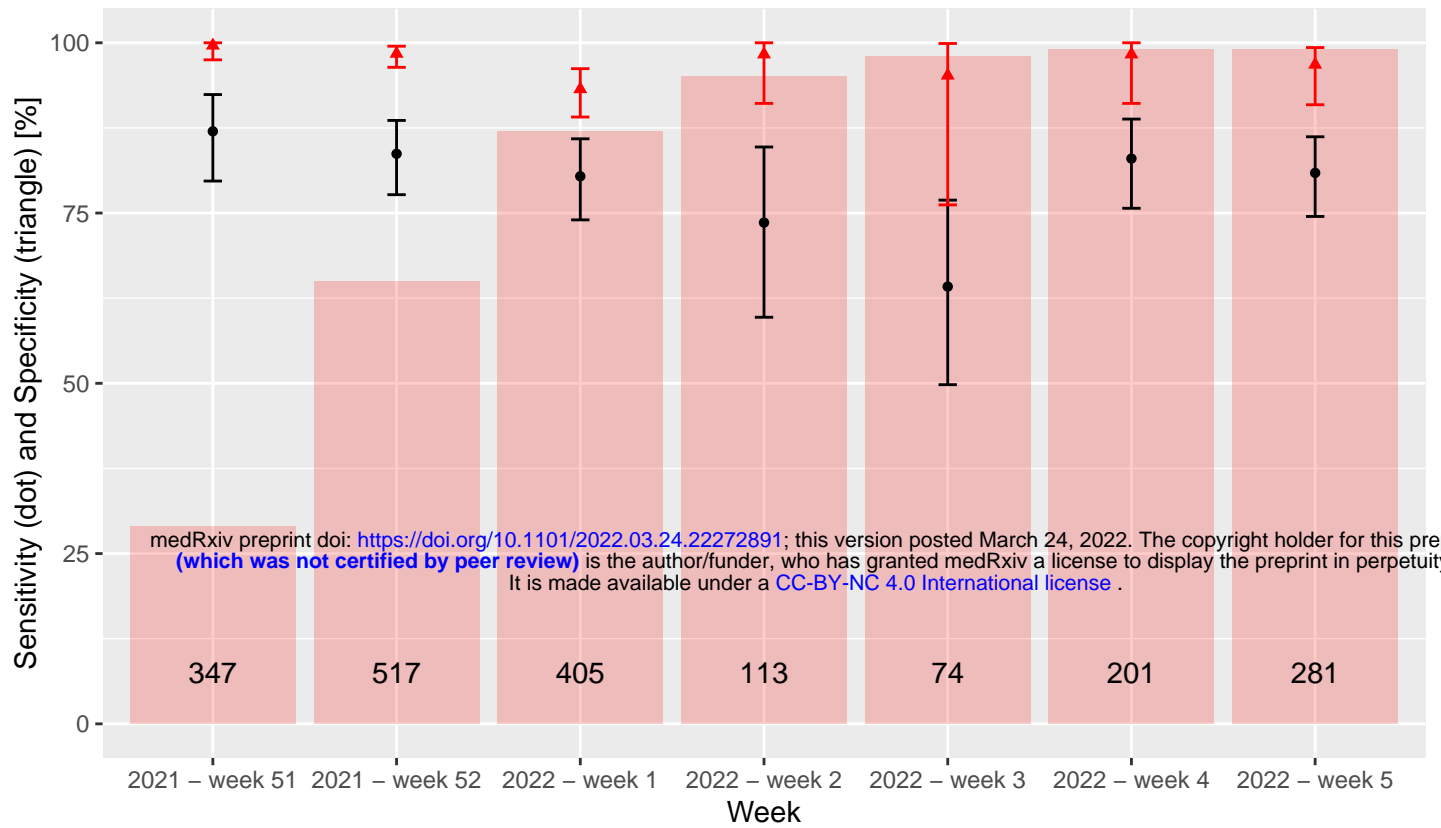
MPBio, oropharyngeal-nasal sampling



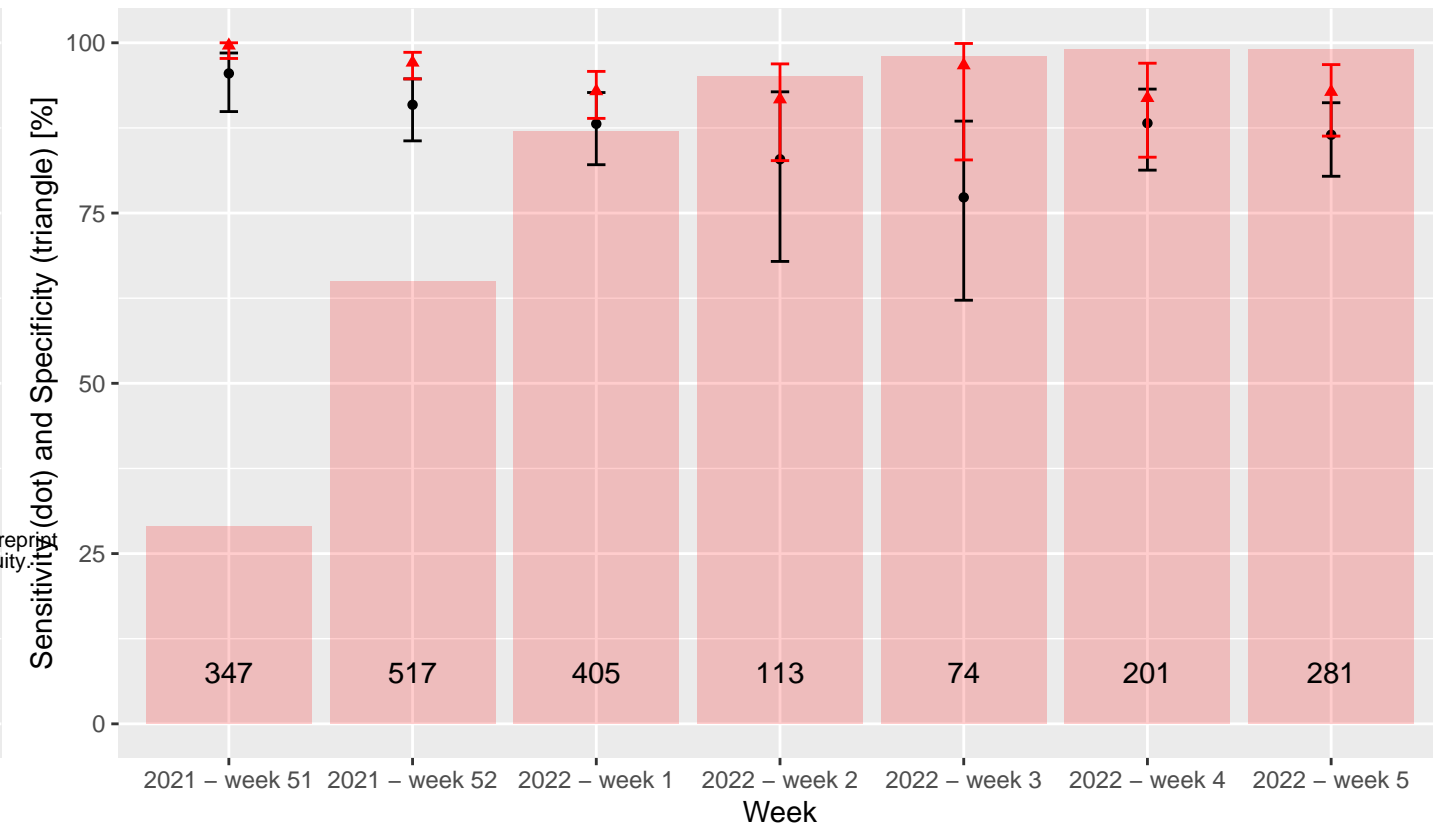
Clinitest, oropharyngeal-nasal sampling



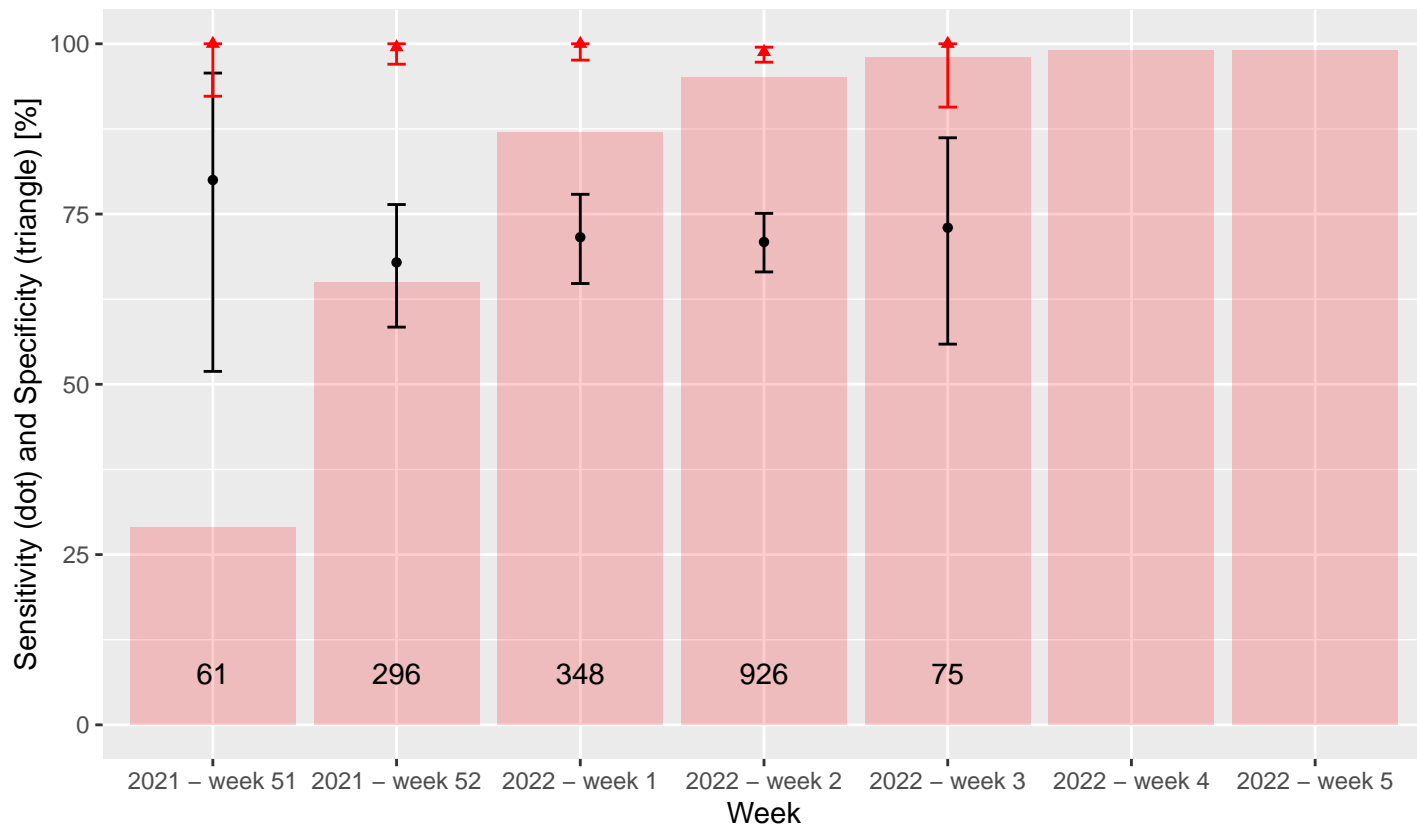
Flowflex



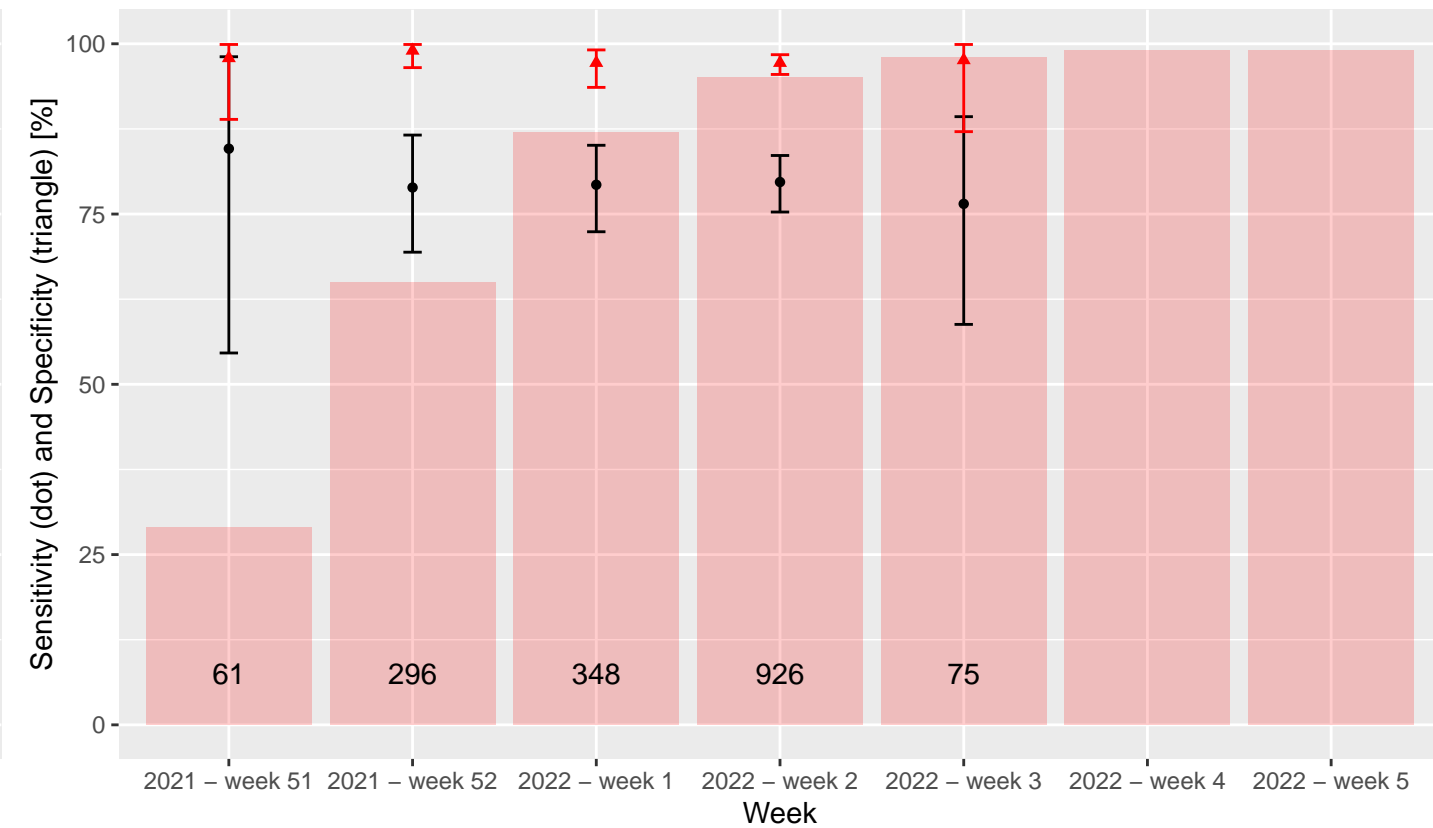
Flowflex at viral load cut-off



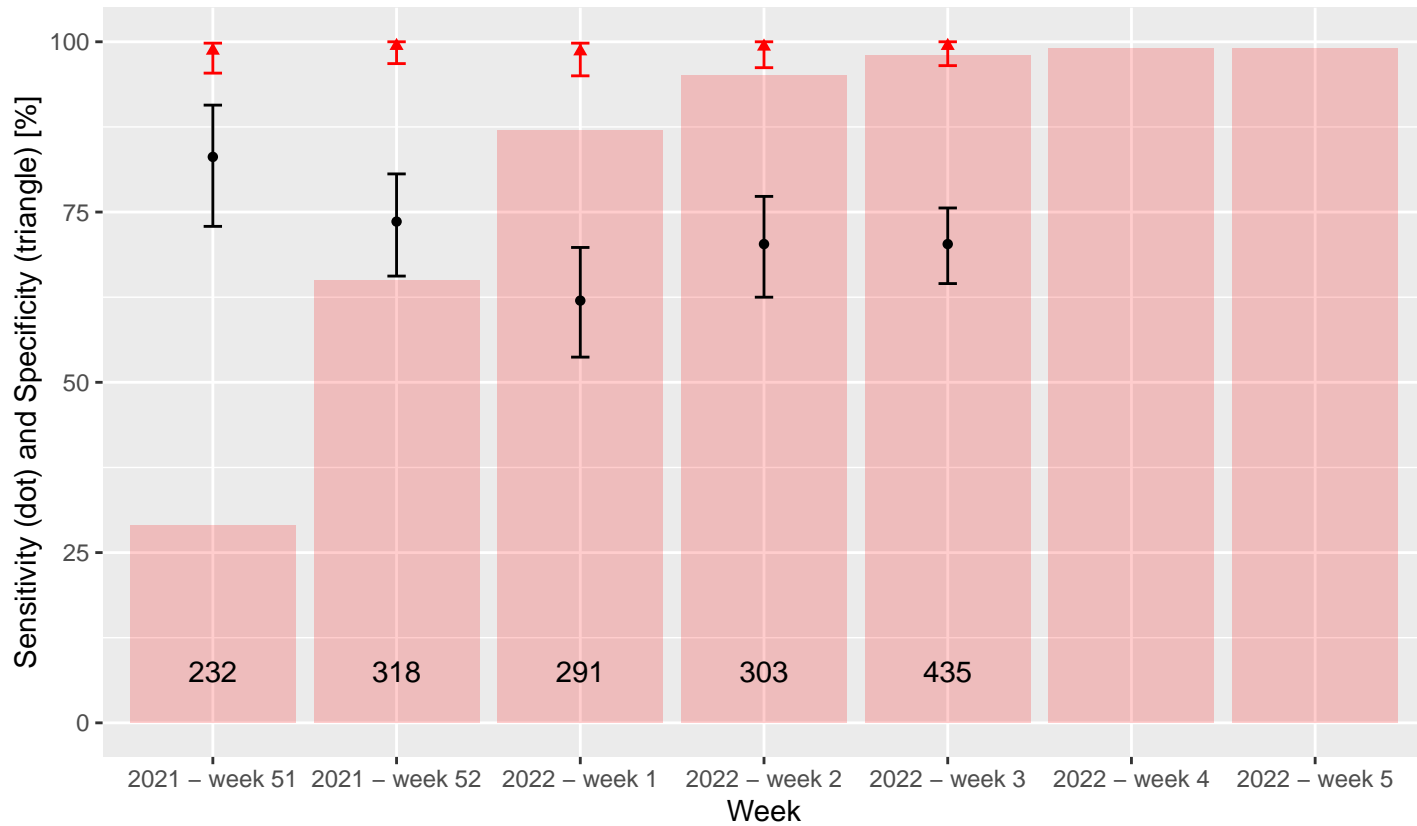
MPBio



MPBio at viral load cut-off



Clinitest



Clinitest at viral load cut-off

