

1
2
3
4
5
6
7
8
9
10
11
12
13
14
15
16
17
18
19
20
21
22
23
24
25
26
27

SARS-CoV-2 infections in infants in Haiti 2020-2021; evidence from a serological cohort

Rigan Louis RN/FNP^{1,2}, Ruiyu Pu DVM^{1,4}, Tracey D Logan MS^{1,4}, Luke Trimmer-Smith PhD⁴, Richard Chamblain^{1,2}, Adriana Gallagher^{1,4}, Valery Madsen Beau De Rochars MD^{1,5}, Eric Nelson MD PhD^{1,6,7}, Derek AT Cummings PhD^{1,3}, Maureen T Long DVM^{1,4}, J. Glenn Morris, Jr. MD^{1,7*}

- 1. Emerging Pathogens Institute, University of Florida, Gainesville, FL, USA
- 2. Faculte de Medicine et de Pharmacie, Universite d'Etat d'Haiti, Port-au-Prince, Haiti
- 3. Department of Biology, College of Liberal Arts and Sciences, University of Florida, Gainesville, FL, USA
- 4. Department of Comparative Diagnostic and Population Medicine, College of Veterinary Medicine, University of Florida, Gainesville, FL, USA
- 5. Department of Health Services Research, Management and Policy, College of Public Health and Health Professions, University of Florida, Gainesville, FL, USA.
- 6. Department of Pediatrics, College of Medicine, University of Florida, Gainesville, FL, USA
- 7. Department of Environmental and Global Health, University of Florida, Gainesville, FL, USA
- 8. Department of Medicine, College of Medicine, University of Florida, Gainesville, FL, USA

*Correspondence should be addressed to: Dr. Glenn Morris
Emerging Pathogens Institute
University of Florida
2055 Mowry Road, Gainesville, FL 32610-0009
jgmorris@epi.ufl.edu

Secondary communicating author: Dr. Derek Cummings

28 **Summary**

29 Between February 2019 and March 2021, 388 dried blood spot samples were obtained from 257

30 children <30 months of age who were part of a longitudinal maternal/infant cohort in Haiti.

31 Among the children followed, 16.7% became seropositive; sampling date was the only covariate

32 associated with the hazard of seroconversion.

33

34

35 While there have been a number of population-based serologic studies that have assessed rates of
36 SARS-CoV-2 infection, work to date has largely been among adults in the developed world.^{1,2}
37 Of the 968 studies included in a recent meta-analysis, the majority (77%) of papers retained for
38 analysis were from high income countries, which tended to have lower seroprevalence than low-
39 to middle-income countries (LMIC).¹ Most of the papers that have been published, irrespective
40 of income,^{3,4} have focused on school-age or adult populations, with very limited data available
41 on infections among the youngest age groups. However, it has also been observed that young
42 infants have SARS-CoV-2 viral loads higher than those seen in other age groups, suggesting that
43 they can play a critical role in transmission within a household setting.⁵ Given these
44 circumstances, it becomes extremely important to understand the rate of infection and immune
45 responses amongst infants in LMIC to facilitate development of appropriate surveillance and
46 intervention strategies.

47
48 The first case of COVID-19 in Haiti was identified on March 19, 2020. As part of an
49 international multi-site study to assess the impact of viral infection on pregnancy outcome (the
50 ZIKAction project),⁶ our group monitored a maternal and child cohort in the Gressier region of
51 Haiti, with dried blood spot (DBS) samples collected from infants between birth and 30 months
52 of age between February 2019 and March 2021. Serendipitously, this time period included the
53 first reported Haitian COVID-19 cases and the peaks of the first and second Haitian COVID-19
54 “waves” (Figure 1). We used these data and samples to assess serological responses to SARS-
55 CoV-2 among study infants during the first year of the pandemic in Haiti. The predominant
56 SARS-CoV-2 lineage circulating in Haiti during the study was B.1, with smaller numbers of
57 cases in the B1.478 and B1.1 lineages.⁷

58

59 **Methods**

60 This study was conducted under review of the University of Florida (UF) IRB and the Haitian
61 Comite National de Bioethique of the Ministere De La Sante Publique Et De La Population.
62 Mothers in the study were recruited at the time of their first antenatal visit; basic demographic,
63 epidemiologic, and clinical data were obtained; and efforts were made to follow all infants born
64 to enrolled mothers, with visits scheduled at 0, 4, 12, and 18-30 months of age. During visits,
65 infants were screened for developmental delays, and DBS samples were collected by heel-stick.
66 Mothers were also asked to report illness in their infants since the infant was last seen by study
67 staff. Travel within Haiti was severely limited during the study period because of substantial
68 political unrest and the COVID epidemic. Many mothers were also hesitant about allowing a
69 heel-stick for blood collection. Because of this, it was not possible to obtain samples from all
70 infants at all scheduled time points.

71

72 Detailed laboratory methods are provided in Supplemental Materials. In brief, a single 6mm
73 biopsy punch was used to capture the area covered with each blood spot. Because the blood spots
74 varied in size and intensity, the amount of total protein in each sample was determined by using a
75 Bradford protein microassay. A research ELISA, adapted from a previously published protocol,⁸
76 was developed and used to target the SARS-CoV-2 Receptor Binding Domain (RBD).

77

78 We estimated that with 50 samples collected before the pandemic and 50 after, we had 80%
79 power to detect a difference in seroprevalence assuming 15% of babies would be seropositive
80 after the beginning of the pandemic and 0% before (with 95% confidence). We fit regression

81 models to average ODs to determine factors associated with larger OD values. A mixture model
82 was fit to the average OD's across all samples, assuming that observations came from two
83 distributions, those that had not been infected and those that had in the past. A threshold in OD
84 value was identified from the mixture model that indicated a 95% probability of belonging to the
85 distribution associated with higher values ($OD > 0.21$). This threshold was used to define
86 individual measurements as indicating seropositivity. Interval censored survival analysis was
87 used to investigate the association of the hazard of SARS-CoV-2 seropositivity possible risk
88 factors.

89

90 **Results**

91 We obtained 388 samples from 257 children; numbers of samples by year and time point are
92 shown in Supplemental Table 1. Longitudinal samples were obtained from 107 of these children
93 consisting of two or more samples: this includes 84 infants for whom two samples were
94 available, 22 with three samples, and one for whom samples were available for all four time
95 points. The average protein concentration for all samples was 5,194 ug/mL with 18 measuring
96 below 100 ug/mL and the highest measuring 13,209 ug/mL. There were no differences in mean
97 protein levels when analyzed for age or year.

98

99 Using the dataset of all samples (388), a spline investigating the relationship between time of
100 sampling and OD indicated that average ODs increased ~ 0.200 in value at 400 days past January
101 1, 2019 or approximately March 2020 (Supplemental Figure 1). Increases in ODs that occurred
102 in 2020 and 2021 reflected the timing of waves of reported for SARS-CoV-2 cases and deaths in
103 Haiti over the same time periods (Figure 1). No anti-SARS-CoV-2 IgG responses above the

104 predicted cut-off occurred before July, 2020 and no infant was seropositive at birth. Forty-three
105 (16.7% [95% CI 12.7%-21.8%]) of 257 unique children tested seropositive at some point during
106 the study.

107
108 We conducted a survival analysis to account for differing amounts of person time for each
109 individual and over time (Figure 2, Supplemental Figure 2). We fit piecewise constant hazard
110 survival models to estimate the hazard of anti-SARS-CoV-2 seropositivity over time in our study
111 population. Hazards estimated for intervals before and after March 1, 2020 found that hazards
112 were significantly larger in the later interval (Hazard ratio of 39.1 95% CI 13.1, 2.8e7). Age of
113 child, mother's age, educational attainment, marital status, urban/rural status and parity of birth
114 were not associated with the hazard of infection. Trends in OD were similar across age groups
115 (Supplemental Figure 3).

116
117 Twenty-one of the consecutively tested children tested above the cut-off in 2020 and 2021, with
118 seven testing above the cut-off on two of the samples. One child (of 8 total) who had a sample
119 collected after an initial seropositive sample became seronegative upon follow up. Only limited
120 data were available on clinical illnesses experienced by children during the study. However, no
121 child was diagnosed at a medical facility as having COVID-19, based either on clinical
122 presentation or laboratory testing, and mothers did not spontaneously report occurrence of more
123 severe illnesses in their infants that might have been consistent with COVID-19.

124

125

126

127 **Comment**

128 The overall seropositivity rate of 16.7% among our infant cohort was lower than the 39%
129 seroprevalence previously reported by our group for adult populations in Haiti during a
130 comparable time period.⁷ This may be a reflection of lower exposure of neonates and very young
131 children to the general population. The adult data were collected from predominantly urban
132 populations in Port-au-Prince. Given that studies in Peru and South Africa have demonstrated
133 higher seroprevalence rates in more densely populated urban areas as compared with rural
134 areas,^{4,5} caution should be used in directly comparing the data from our infants (the majority of
135 whom came from a rural origin) with these adult data.

136

137 In work performed in middle and upper income countries, SARS-CoV-2 seropositivity in
138 children generally identified as below the age of five has been highly variable, from less than 1%
139 in German and Switzerland to 6% in Spain after during the first surge of the pandemic.⁹⁻¹¹
140 Several U.S. studies examined antibody prevalence in residual blood samples of children during
141 the late spring and early fall of 2020, with seroprevalence rates of 9.5 - 16.3%.^{12,13} Recently, a
142 cross sectional investigation of SARS in Virginia reported 8.5% seropositivity in a study of
143 1,038 children; seroprevalence was highest (13.7%) in children in the 0-5 year age group.¹⁴ Our
144 data are consistent with the observation that rates of seropositivity are higher in LMIC settings
145 and underscore the widespread distribution of infection in very young children in these areas,
146 with no risk factors identified other than occurrence in the midst of an epidemic wave.

147

148 In keeping with data showing little evidence of serious clinical illness in infected infants, we did
149 not obtain a history of a serious preceding illness among our seropositive infants, nor were any

150 of the children in the study formally diagnosed as having COVID-19. However, our data
151 document that infections do occur in infants and elicit an immune response. These studies were
152 conducted at a time when B.1 lineage strains were predominant in Haiti and need to be repeated
153 with the successive waves of Gamma, Delta, and Omicron strains which have occurred;⁷ the
154 health impact of these later lineages also remains to be determined. However, given that infants
155 have been shown to have high SARS-CoV-2 viral loads,⁵ our findings underscore the potential
156 importance of very young children in facilitating virus transmission within LMIC households
157 and communities, and the need to consider these youngest members of society in developing
158 models and prevention strategies for COVID-19.

159

160 **Contributors**

161 Conceptualization (RL, VMBDR, DATC, MTL, JGM); investigation (RL, RC, VMBDR); data
162 curation and analysis (RL, RC, DATC, MTL, JGM); methodology (RP, TDL, LT-S, AG, EN,
163 MTL); writing and reviewing and editing (RL, VMBDR, EN, DATC, MTL, JGM)

164 **Data Sharing**

165 Contingent on adherence to IRB requirements, the complete de-identified participant dataset will
166 be available on request. Data will be available with publication. Additional documents (study
167 protocol, statistical analysis plan, informed consent form) will also available if needed with
168 publication.

169 **Acknowledgements**

170 This project has received funding from the European Union’s Horizon 2020 research and
171 innovation programme under grant agreement No 734857 through the Penta Foundation (the
172 ZIKAction Project); and by University of Florida Emerging Pathogens Institute, the Clinical and
173 Translational Research Institute, and the Fern Audette Endowment, College of Veterinary
174 Medicine, Gainesville FL. We thank and are grateful the provision of reagents and protocols for
175 the rbdELISA from Aaron Schmidt, Ragon Institute/Harvard Medical School, Boston MA and
176 Jason Harris at Massachusetts General Hospital/Harvard Medical School.

177 **Declaration of conflicting interests**

178 The authors declared no competing interests.

179

180

181 **References**

- 182 1. Bobrovitz N, Arora RK, Cao C, et al. Global seroprevalence of SARS-CoV-2 antibodies: A
183 systematic review and meta-analysis. *PLoS One* 2021; **16**(6): e0252617.
- 184 2. Bloomfield M, Pospisilova I, Cabelova T, et al. Searching for COVID-19 Antibodies in Czech
185 Children-A Needle in the Haystack. *Front Pediatr* 2020; **8**: 597736.
- 186 3. Reyes-Vega MF, Soto-Cabezas MG, Cardenas F, et al. SARS-CoV-2 prevalence associated to
187 low socioeconomic status and overcrowding in an LMIC megacity: A population-based
188 seroepidemiological survey in Lima, Peru. *EClinicalMedicine* 2021; **34**: 100801.
- 189 4. Kleynhans J, Tempia S, Wolter N, et al. SARS-CoV-2 Seroprevalence in a Rural and Urban
190 Household Cohort during First and Second Waves of Infections, South Africa, July 2020-March
191 2021. *Emerg Infect Dis* 2021; **27**(12): 3020-9.
- 192 5. Ochoa V, Díaz FE, Ramirez E, Fentini MC, Carobene M, Geffner J, Arruvito L, Remes
193 Lenicov F; INBIRS COVID-19 Study Group. Infants Younger Than 6 Months Infected With
194 SARS-CoV-2 Show the Highest Respiratory Viral Loads. *J Infect Dis.* 2022 Feb 1;225(3):392-
195 395. doi: 10.1093/infdis/jiab577. PMID: 34850028; PMCID: PMC8690165.
- 196 6. Ades AE, Brickley EB, Alexander N, et al, including EC Zika Consortia Vertical
197 Transmission Study Group. Zika virus infection in pregnancy: a protocol for the joint analysis of
198 the prospective cohort studies of the ZIKAlliance, ZikaPLAN and ZIKAction consortia. *BMJ*
199 *Open* 2020;10:e035307. doi: 10.1136/bmjopen-2019-035307
- 200 7. Tagliamonte MS, Mavian C, Zainabadi K, et al. Rapid emergence and spread of SARS-CoV-2
201 gamma (P.1) variant in Haiti. *Clin Infect Dis* 2021 Sep 2:ciab736. doi: 10.1093/cid/ciab736.
202 Online ahead of print.

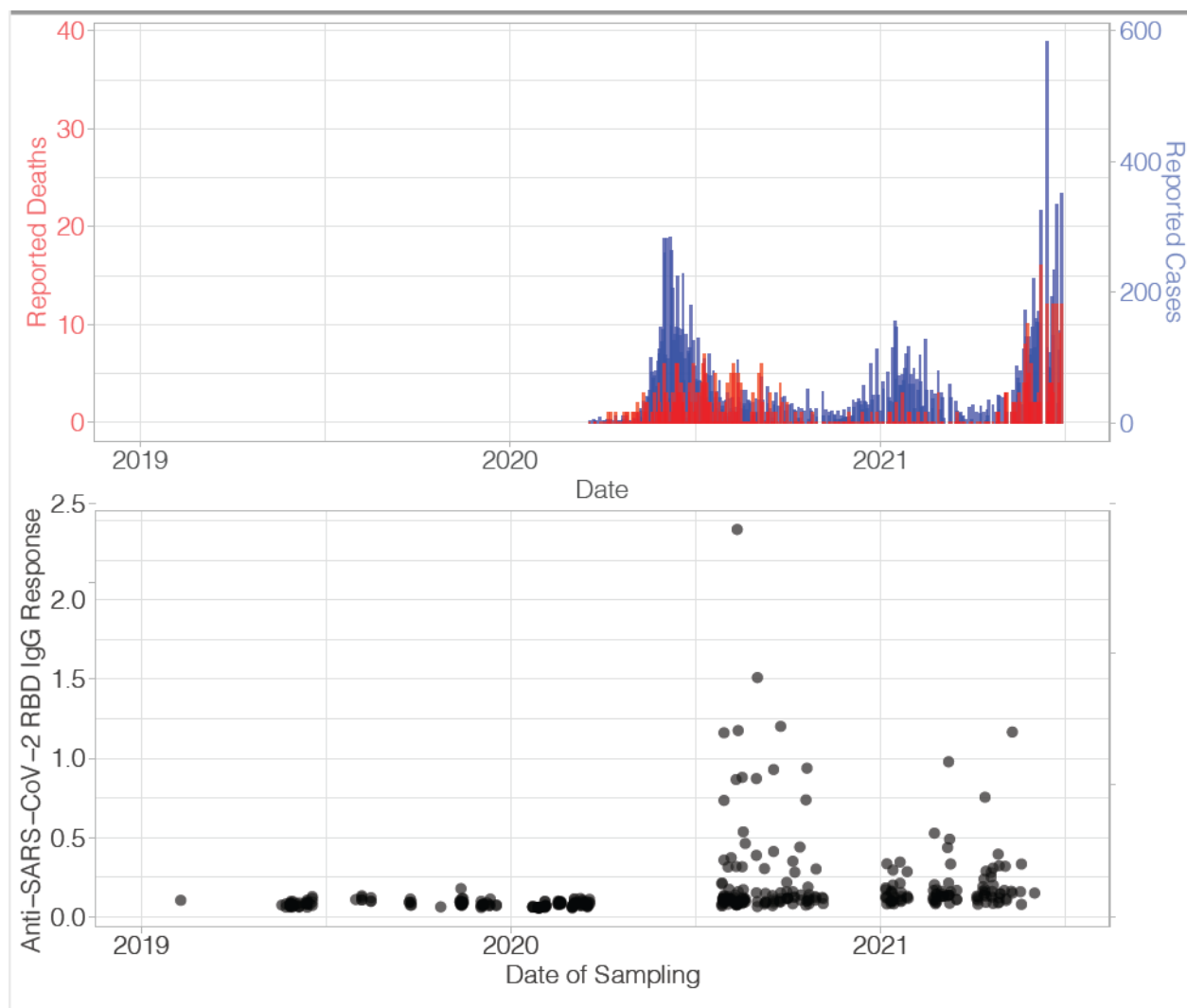
- 203 8. Roy V, Fischinger S, Atyeo C, et al. SARS-CoV-2-specific ELISA development. *J Immunol*
204 *Methods* 2020; 484-485: 112832.
- 205 9. Pollán M, Pérez-Gómez B, Pastor-Barriuso R, et al. SARS-CoV-2 seroprevalence in Spain -
206 Authors' reply. *Lancet* 2020; **396**(10261): 1484-5.
- 207 10. Stringhini S, Wisniak A, Piumatti G, et al. Seroprevalence of anti-SARS-CoV-2 IgG
208 antibodies in Geneva, Switzerland (SEROCoV-POP): a population-based study. *Lancet* 2020.
209 396:313-319. doi: 10.1016/S0140-6736(20)31304-0.
- 210 11. Tönshoff B, Müller B, Elling R, et al. Prevalence of SARS-CoV-2 Infection in Children and
211 Their Parents in Southwest Germany. *JAMA Pediatr* 2021; **175**(6): 586-93.
- 212 12. Hobbs CV, Drobeniuc J, Kittle T, et al. Estimated SARS-CoV-2 Seroprevalence Among
213 Persons Aged <18 Years - Mississippi, May-September 2020. *MMWR Morb Mortal Wkly Rep*
214 2021; **70**(9): 312-5.
- 215 13. Bahar B, Simpson JN, Biddle C, et al. Estimated SARS-CoV-2 Seroprevalence in Healthy
216 Children and Those with Chronic Illnesses in the Washington Metropolitan Area as of October
217 2020. *Pediatr Infect Dis J* 2021; **40**(7): e272-e4.
- 218 14. Levorson RE, Christian E, Hunter B, et al. A cross-sectional investigation of SARS-CoV-2
219 seroprevalence and associated risk factors in children and adolescents in the United States. *PLoS*
220 *One* 2021; **16**(11): e0259823.

221

222

223

224



225

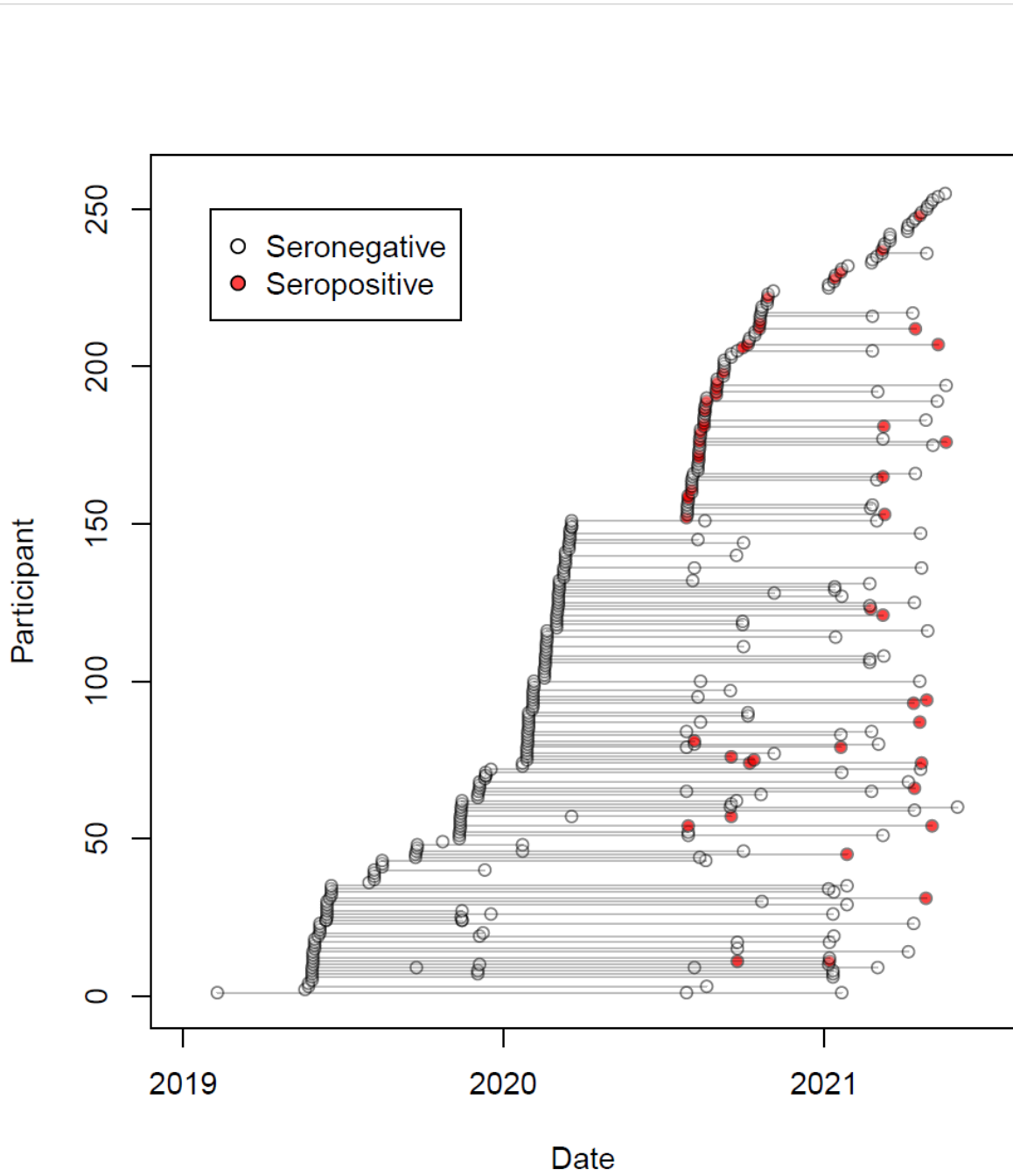
226 Figure 1. Reported cases (blue) and deaths (red) due to SARS-CoV-2 in Haiti (top) and optical density
227 from ELISA that measures the antibody to SARS-CoV-2 Receptor Binding Domain IgG (bottom) by date
228 of sampling for Haitian infants born between March 2019 and May 2021 and followed for up to 30 mos.

229

230

231

232



234

235 Figure 2. Times of follow up for each infant with serostatus indicated from 2019 to 2021. Seropositive
236 samples are shown in red and the seronegative are without fill. Lines connect samples from the same
237 infant.

238

239 Supplemental Figure 1: Density of observed OD values with distributions identified by a mixture model
240 that assumed the values were drawn from two distributions, one that we associated with negative response
241 (red) and positive response (green).

242

243 Supplemental Figure 2: Kaplan Meier survival plot showing estimated probabilities of individuals in our
244 cohort remaining seronegative

245

246 Supplemental Figure 3: Times of follow up for each infant with serostatus indicated from 2019 to 2021.
247 Seropositive samples are shown in red and the seronegative are without fill. Shape of points indicate age
248 of participant (circles, at birth, squares ~4 months, diamonds ~12 months, triangles ~24 months). Lines
249 connect samples from the same infant.

250

251 Supplemental Table 1. Age of infants and year of sampling of children tested for antibodies to SARS-
252 CoV-2 sampled in the Gessier Region between June 2019 and March 2021.

253