

Genome-wide meta-analysis for Alzheimer's disease cerebrospinal fluid biomarkers

Supplementary Information

Table of content

| | |
|---------------------------------------|----|
| Supplementary Text | |
| Genetic architecture | 2 |
| GWAS results for stratified subgroups | 2 |
| Gene prioritization | 2 |
| Supplementary references | 3 |
| Supplementary figures | 4 |
| Supplementary list of authors | 18 |

Supplementary results

Genetic architecture

To test which of the two proteins has a more comparable genetic background to AD, genetic correlations were calculated with previously published AD GWAS summary statistics, both for A β 42 and pTau (Supplementary Table 4). Unfortunately, these results were inconclusive, presumably due to the low SNP-heritability for AD diagnosis.

GWAS results for stratified subgroups

Explorative meta-analyses were repeated stratified for *APOE* (*APOE* ϵ 4 carriers (n=3,240) vs. *APOE* ϵ 4 non-carriers (n=3,201)) and amyloid status (Amyloid normal levels (n=3,182) vs. amyloid abnormal levels (n=3,775)) for stage 1 (QQ plots and lambda shown in Supplementary Figure 9 and 10), of which the results are visualized in Supplementary Figures 11 and 12, and detailed in Supplementary Table 5. *APOE* ϵ 4 carriers still harbored a strong *APOE* signal ($Z=-17.92$; $p=8.59 \times 10^{-72}$), representing the dosage effect of the *APOE* ϵ 4 allele, where rs429358-C decreased A β 42 protein levels. The 3q28 (*GMNC*) locus was observed for pTau in both the *APOE* ϵ 4 carriers ($Z=5.63$; $p=1.85 \times 10^{-8}$) and non-carriers ($Z=7.05$; $p=2.29 \times 10^{-12}$). We furthermore report a novel locus mapping to chromosome region 7q11.22 for A β 42 ($Z=-5.49$; $p=4.12 \times 10^{-8}$) in the *APOE* ϵ 4 non-carriers.

Stratified for amyloid status, *APOE* remained strongly associated with decreased CSF A β 42 levels, both within the abnormal-amyloid-level ($Z=-10.03$; $p=1.14 \times 10^{-23}$) and normal-amyloid-level subgroups ($Z=-14.49$; $p=1.40 \times 10^{-47}$). By contrast, *APOE* increased pTau levels in individuals with normal amyloid levels ($Z=-8.53$; $p=1.50 \times 10^{-17}$), but not in those with abnormal amyloid levels ($Z=-2.81$; $p=0.034$). The 3q28 (*GMNC*) locus was significantly associated to pTau levels in individuals with both normal and abnormal amyloid levels. A novel locus (12q13.3) was observed for individuals with abnormal amyloid levels, decreasing A β 42 protein levels ($Z=-5.47$; $p=4.50 \times 10^{-8}$).

Gene prioritization

Besides the well-established causal *APOE* gene for the *APOE* locus, the genes *CR1* and *BIN1* have also been indicated as most likely causal genes in previous studies for the AD loci on genomic locations 1q32.2 and 2q14.3, respectively. As this previous work is based on thorough functional experiments, we therefore here only focused with the computational-based tool FUMA [1], on the replicated loci for which the causal gene has not been determined. These loci are the 3q28 and 16q24.2 associations for pTau. We report the most promising causal genes by interpreting positional mapping information, gene-based association tests and eQTL annotations in brain and immune tissue and cell types based on publicly available data (see Methods).

The lead SNP for the 3q28 locus is an intergenic variant 59 kb upstream of *GMNC*, the gene physically closest to the significant association signal. *GMNC* is the only gene within this locus showing an association to pTau based on the aggregated effect of 139 variants ($p=5.00 \times 10^{-10}$; Supplementary Table 6). No significant eQTLs were annotated for significant variants within this locus. The lead SNP rs4843559 of 16q24.2 is an intronic variant in *C16orf95*, for which also a significant variant-aggregation association ($p=4.03 \times 10^{-9}$) is observed (Supplementary Table 6). Rs4843559 is furthermore a significant eQTL in blood, increasing *ZCCHC14* gene expression.

The variant aggregation analysis showed no newly associated genes, besides the expected associations for genes in the *APOE* locus, *GMNC* and *C16orf95* (Supplementary Table 6).

Supplementary reference

1. Watanabe, K., et al., *Functional mapping and annotation of genetic associations with FUMA*. Nature Communications, 2017. **8**(1): p. 1826.

Supplementary figures

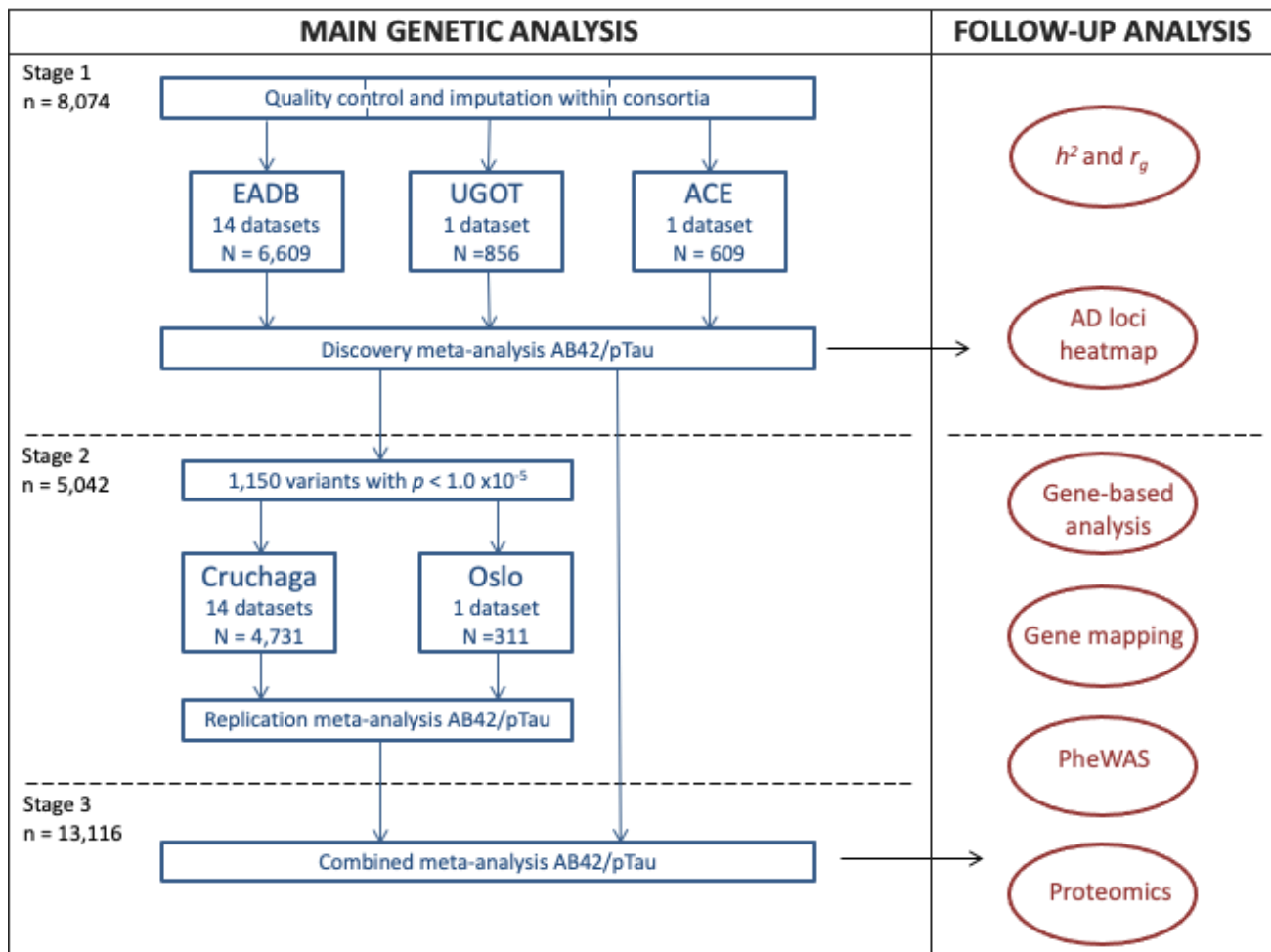


Figure 1. Study design of GWAS meta-analysis, and follow up analyses to explore genetic architecture and biological implications. For the follow-up analyses strategies reported in the first two red ovals, it was preferred to maintain n per variant similar in size. For the remaining follow-up analyses the most powerful results were preferred as input.

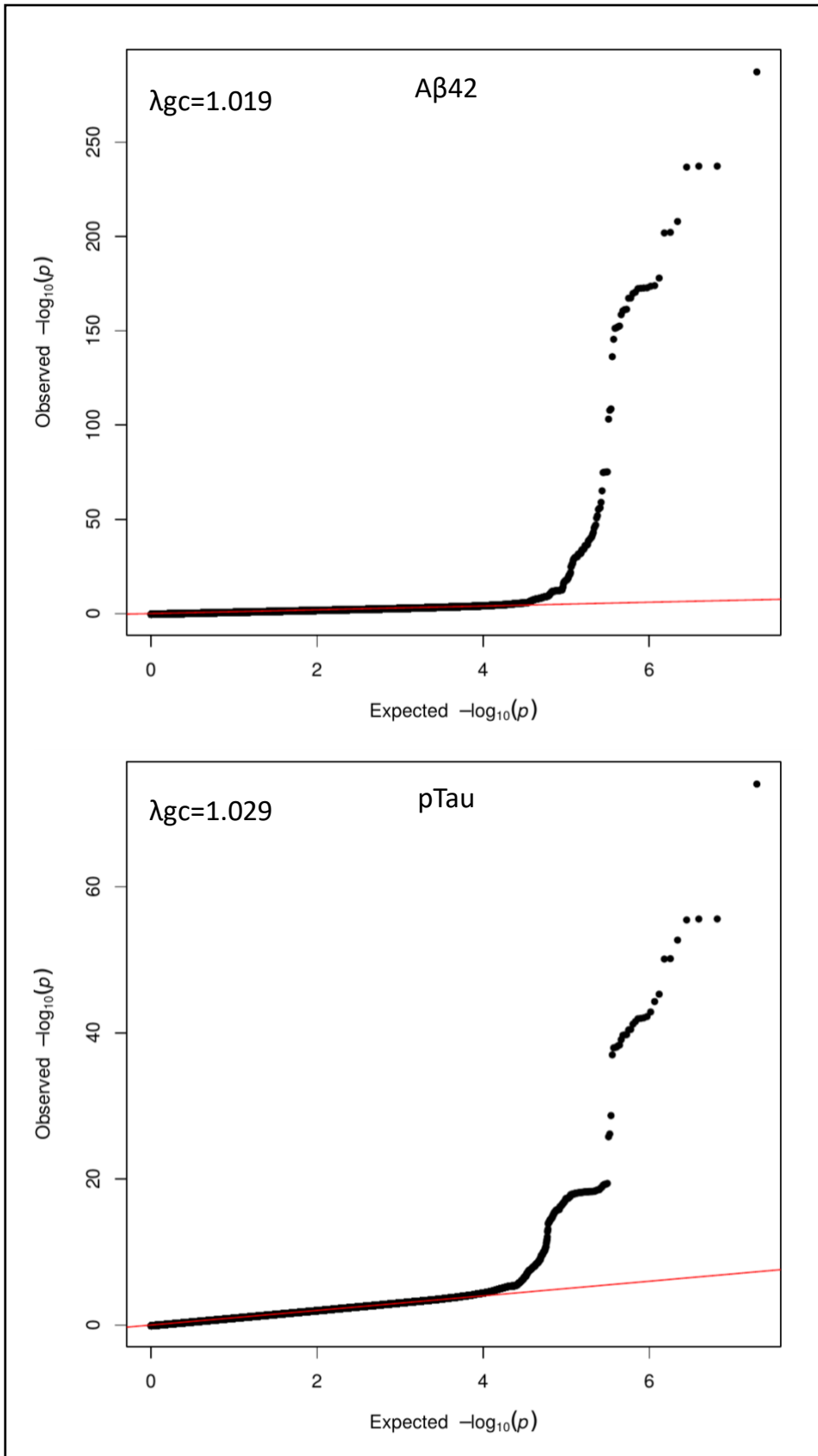
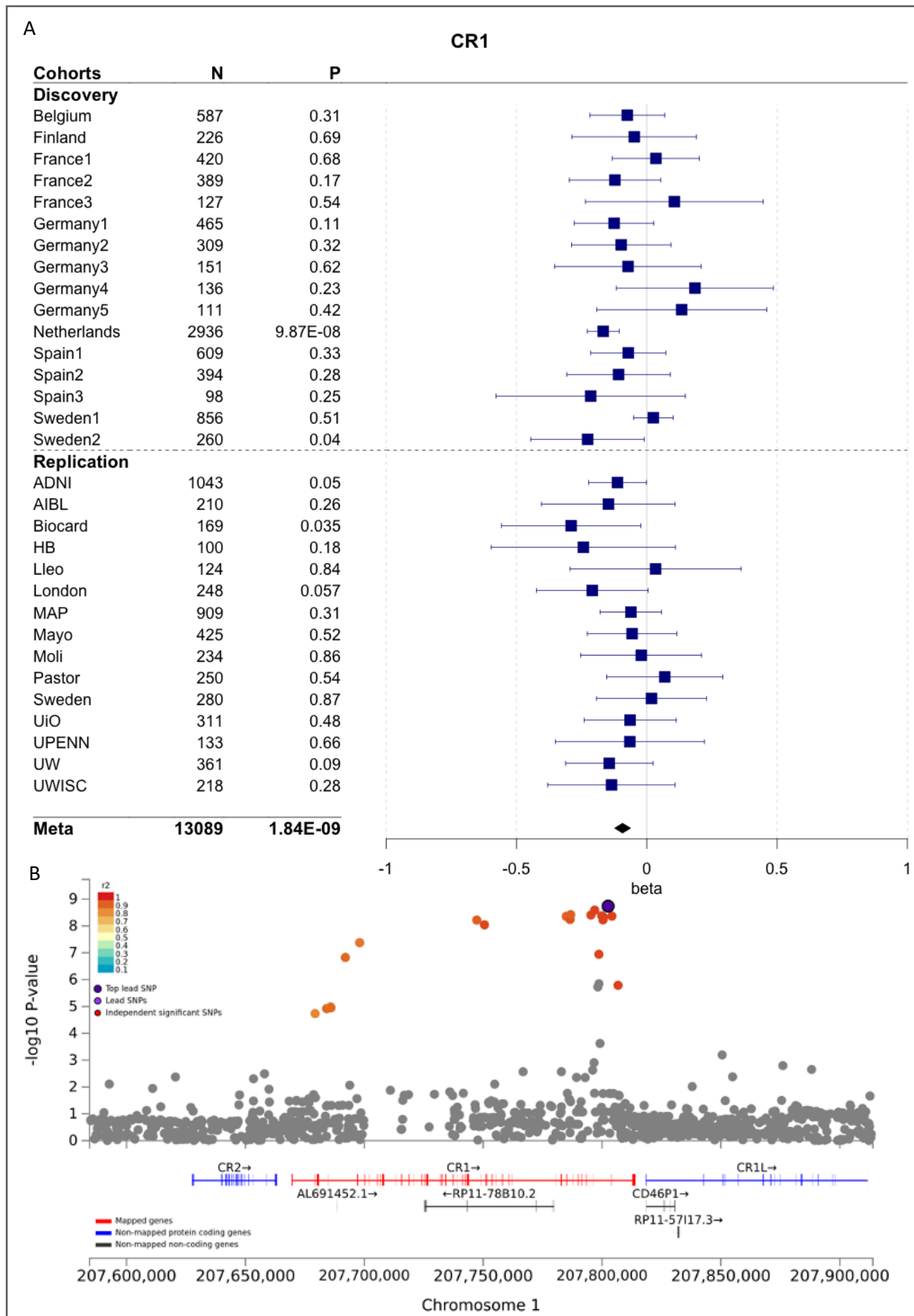
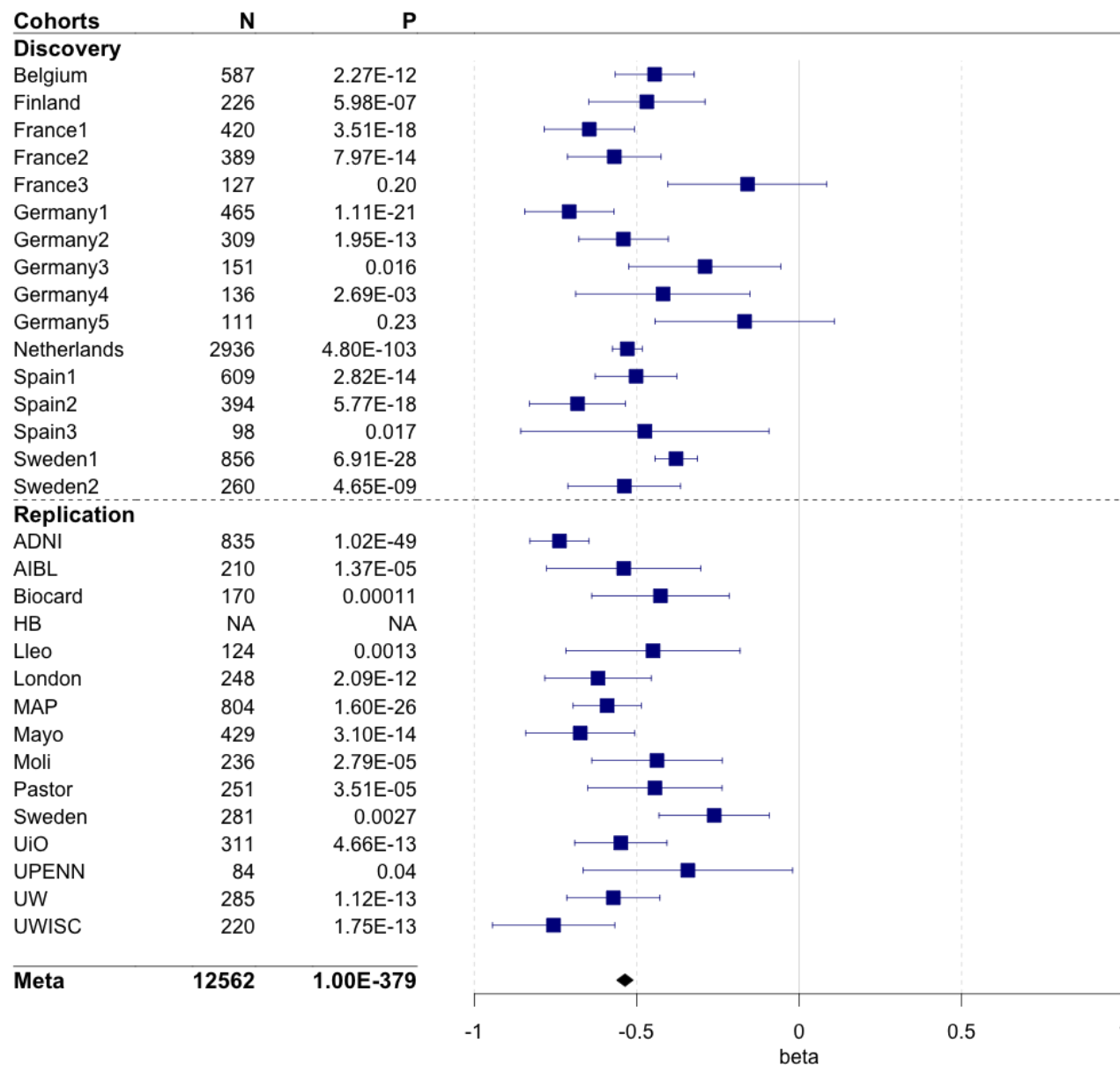


Figure 2. QQ plots of Aβ42 and pTau in stage 1. A graphical representation of the deviation of the observed P values from the null hypothesis.



A

APOE



B

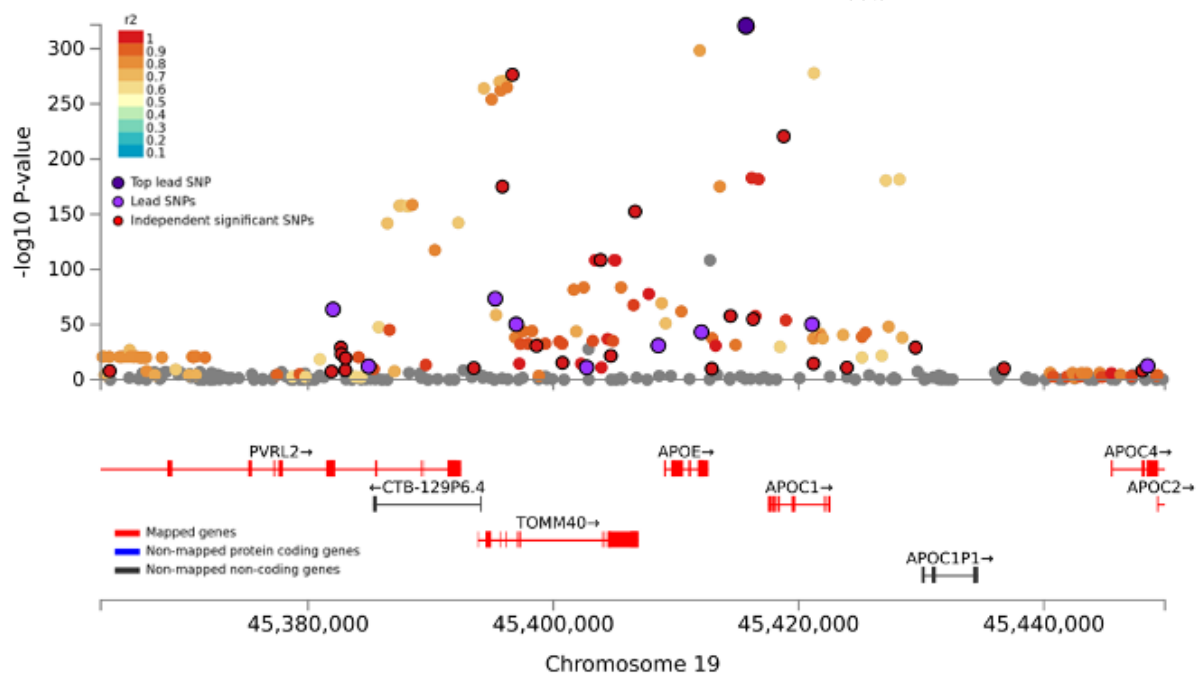
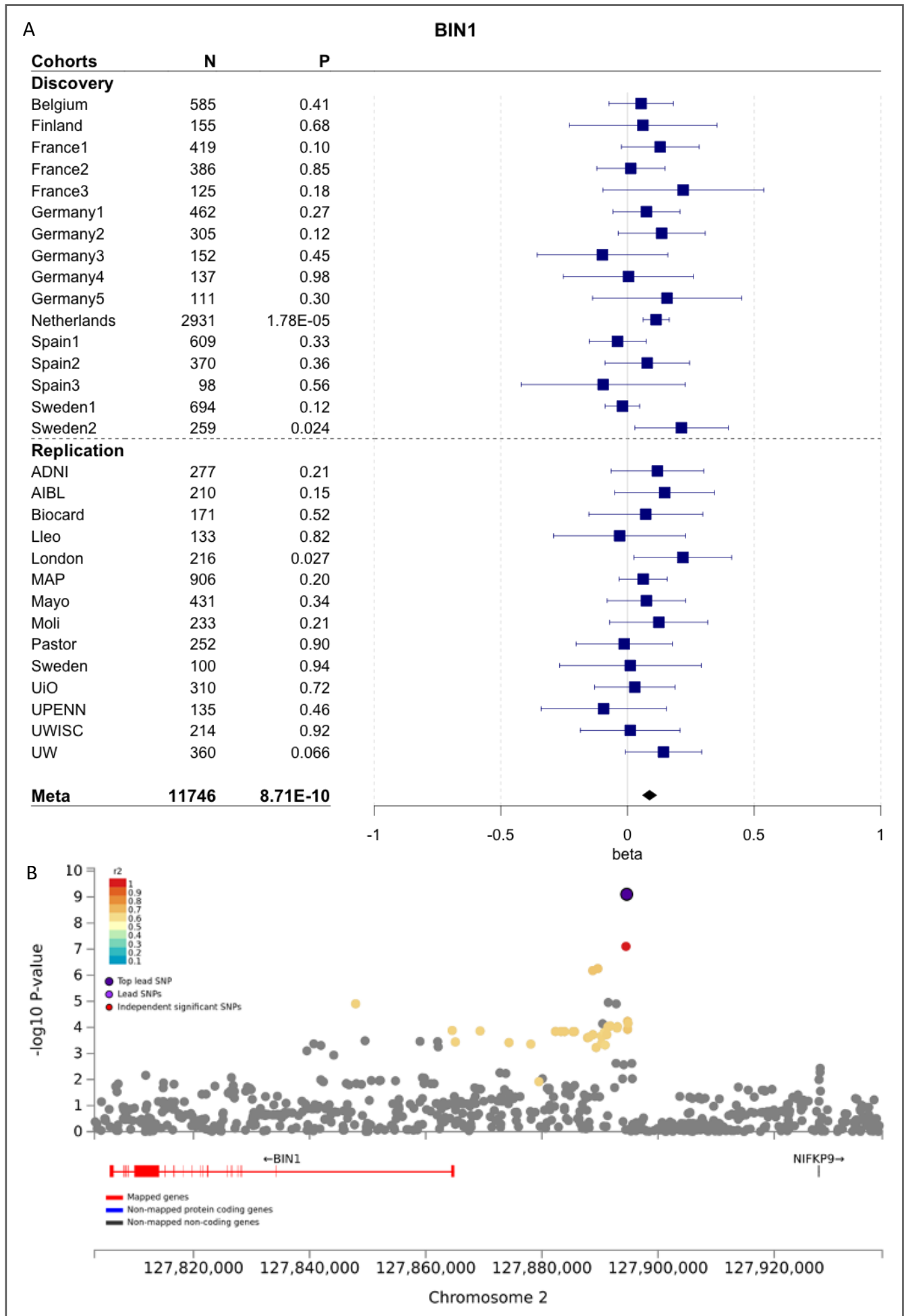


Figure 4. Forest (A) and LocusZoom (B) plots of *APOE* locus associating for AB42. Only the variants with an $r^2 > 0.6$ with the lead SNP are color-coded.



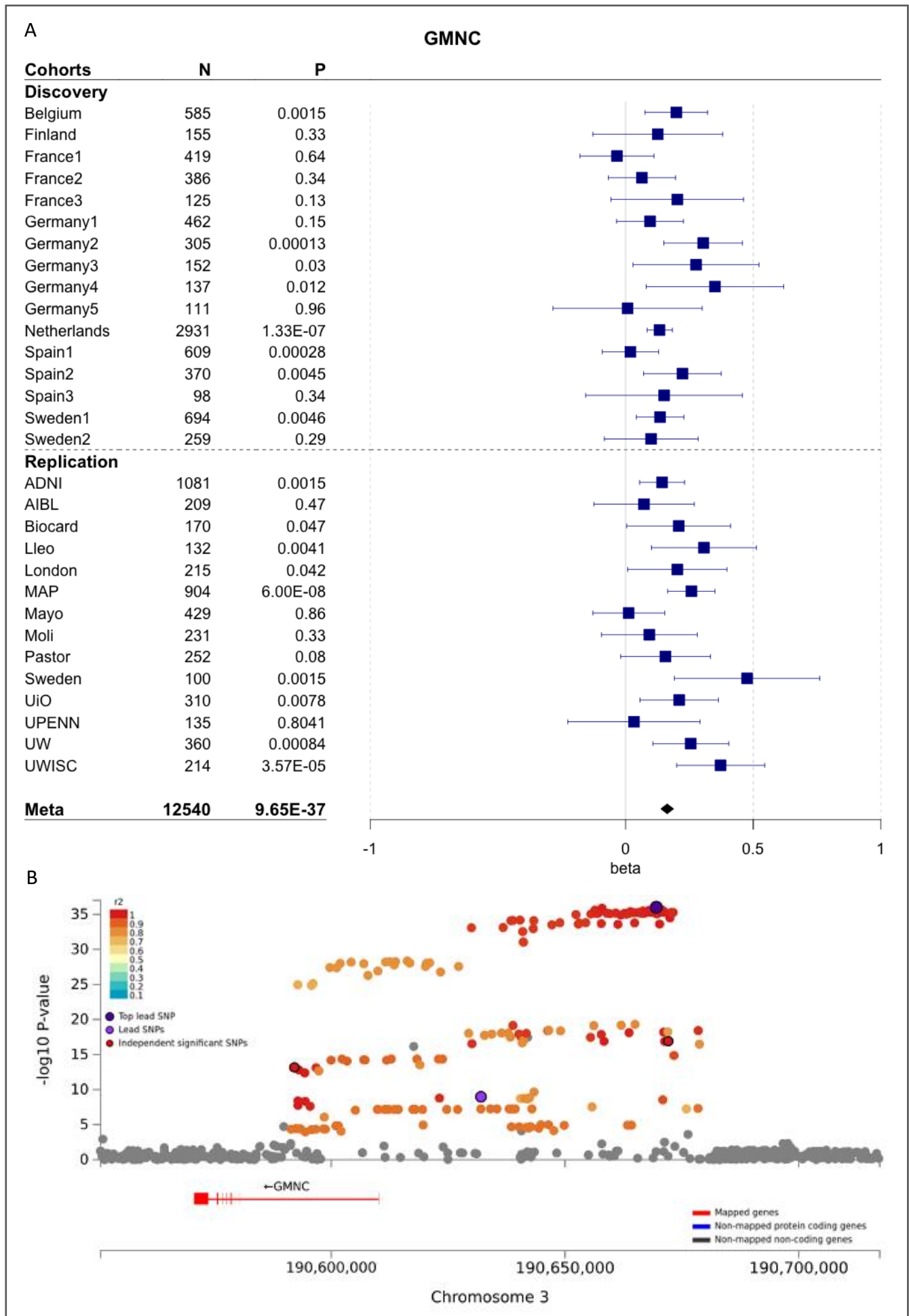
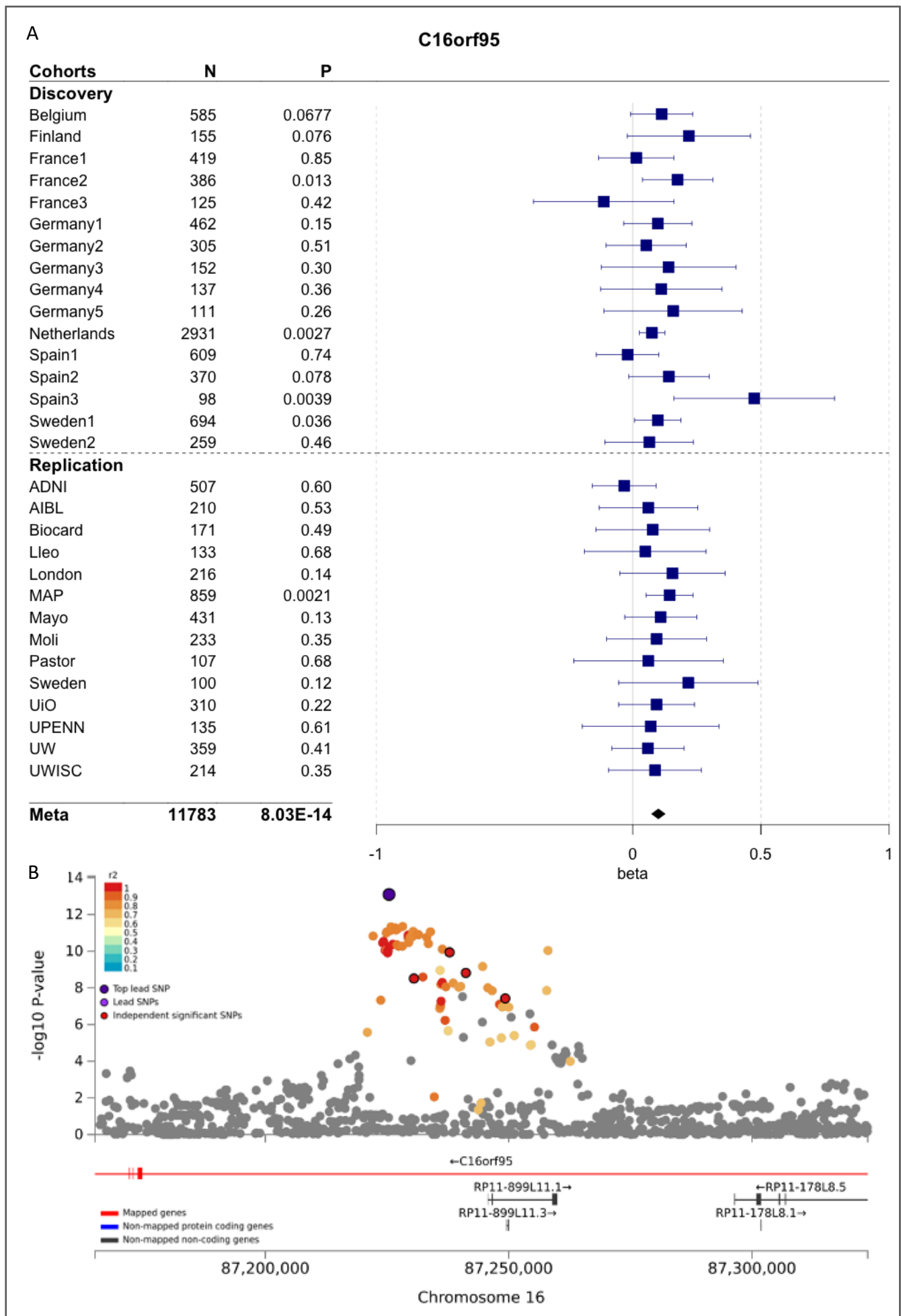
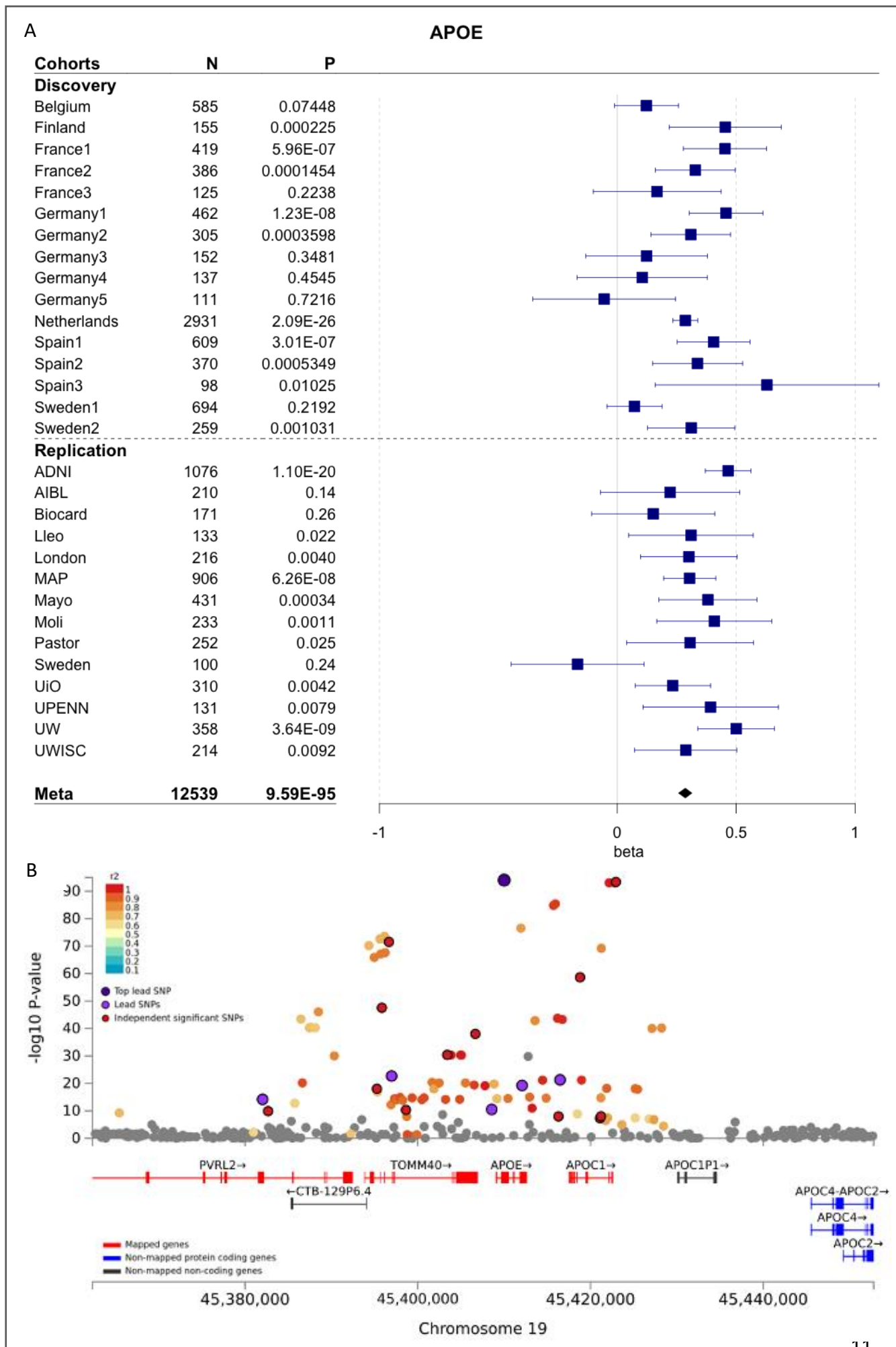


Figure 6. Forest (A) and LocusZoom (B) plots of *GMNC* locus associating for pTau. Only the variants with an $r^2 > 0.6$ with the lead SNP are color-coded. The significance level for variants in high LD can vary due to differences in N as a part of the variants were not available in the replication cohorts.





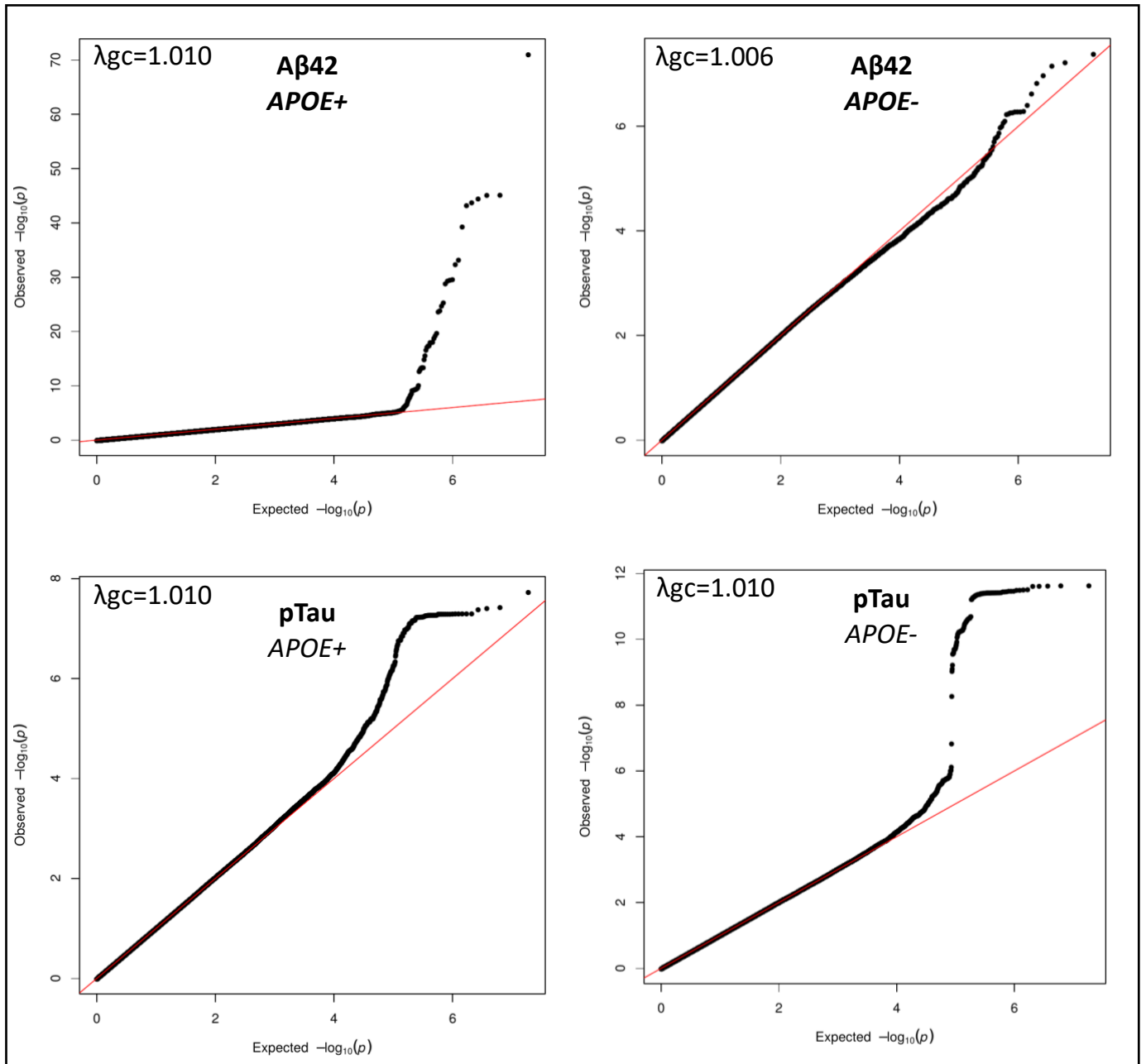


Figure 9. QQ plots of Aβ42 and pTau stratified for APOE4 status. A graphical representation of the deviation of the observed P values from the null hypothesis.

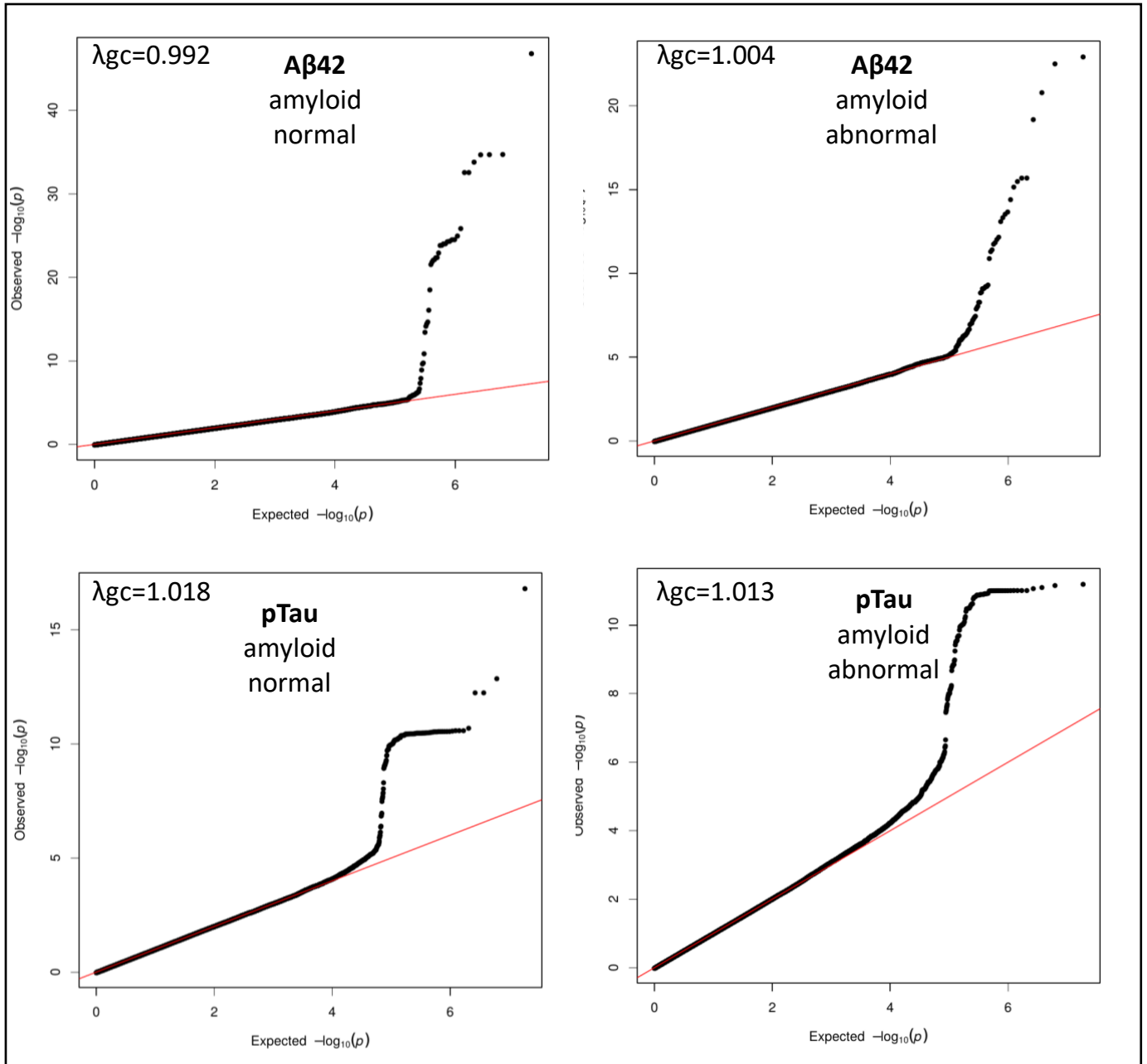


Figure 10. QQ plots of A β 42 and pTau stratified for amyloid status. A graphical representation of the deviation of the observed P values from the null hypothesis.

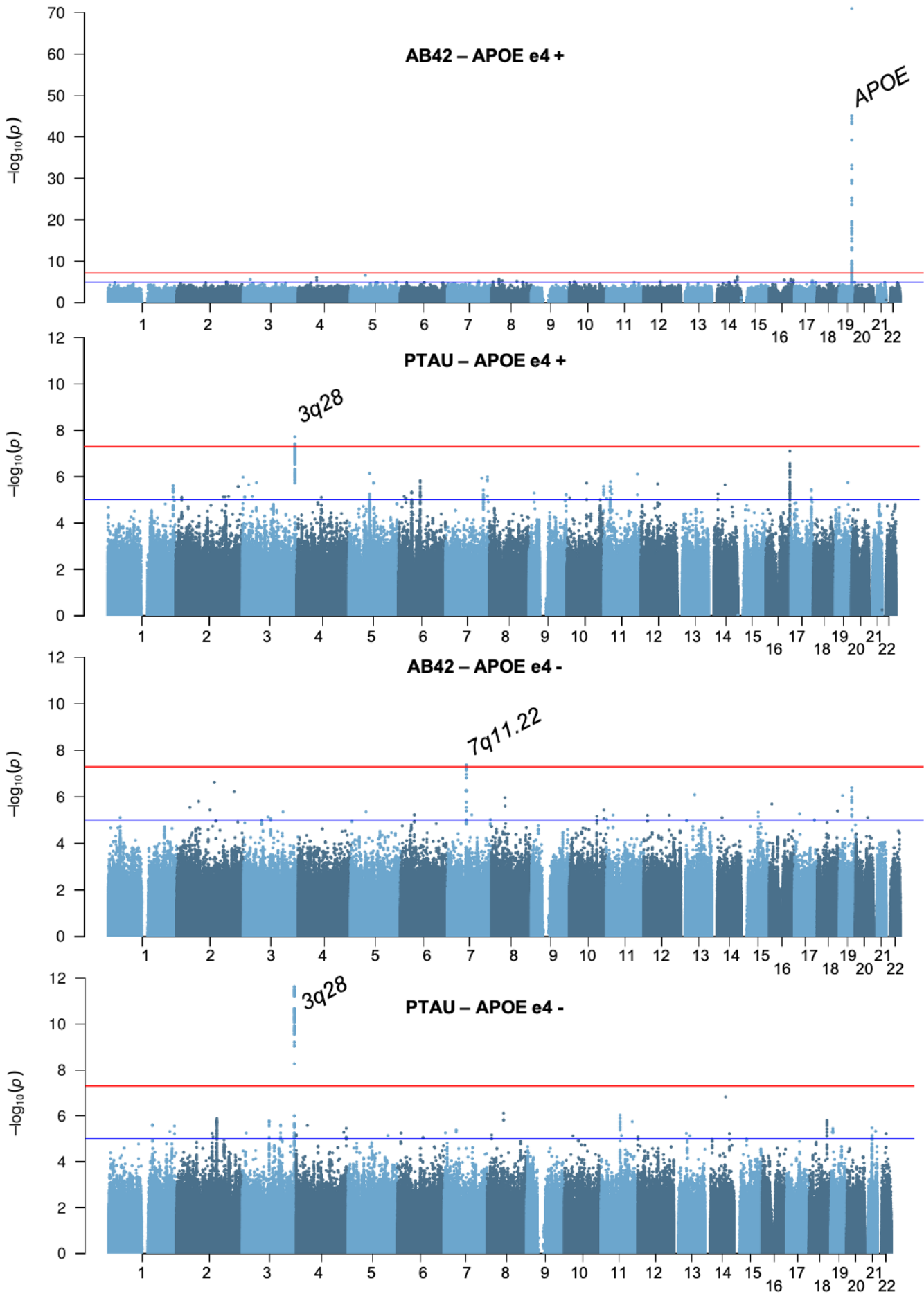


Figure 11. Manhattan plots of association results for stratification based on APOE e4 status.

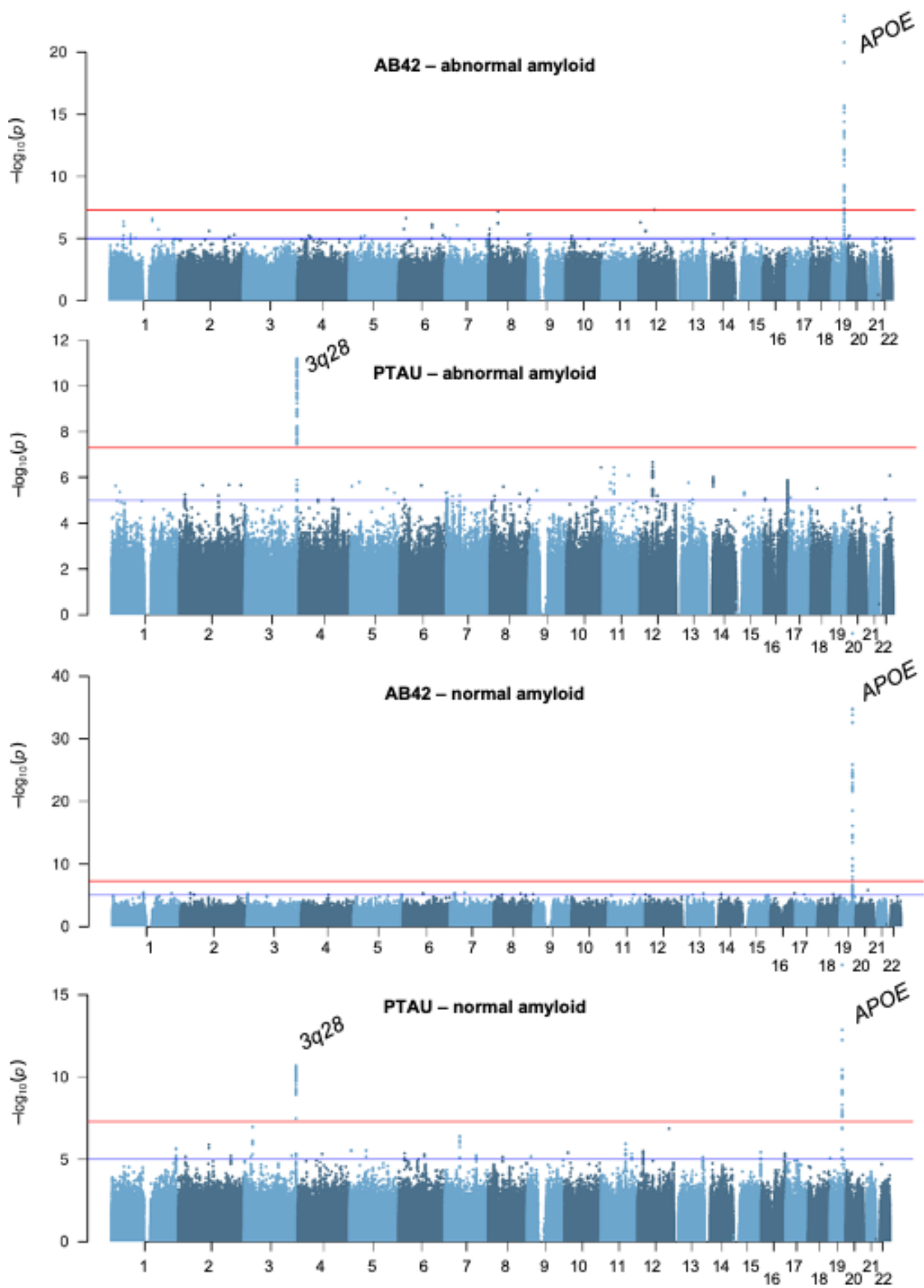


Figure 12. Manhattan plots of association results for stratification based on amyloid status in CSF.

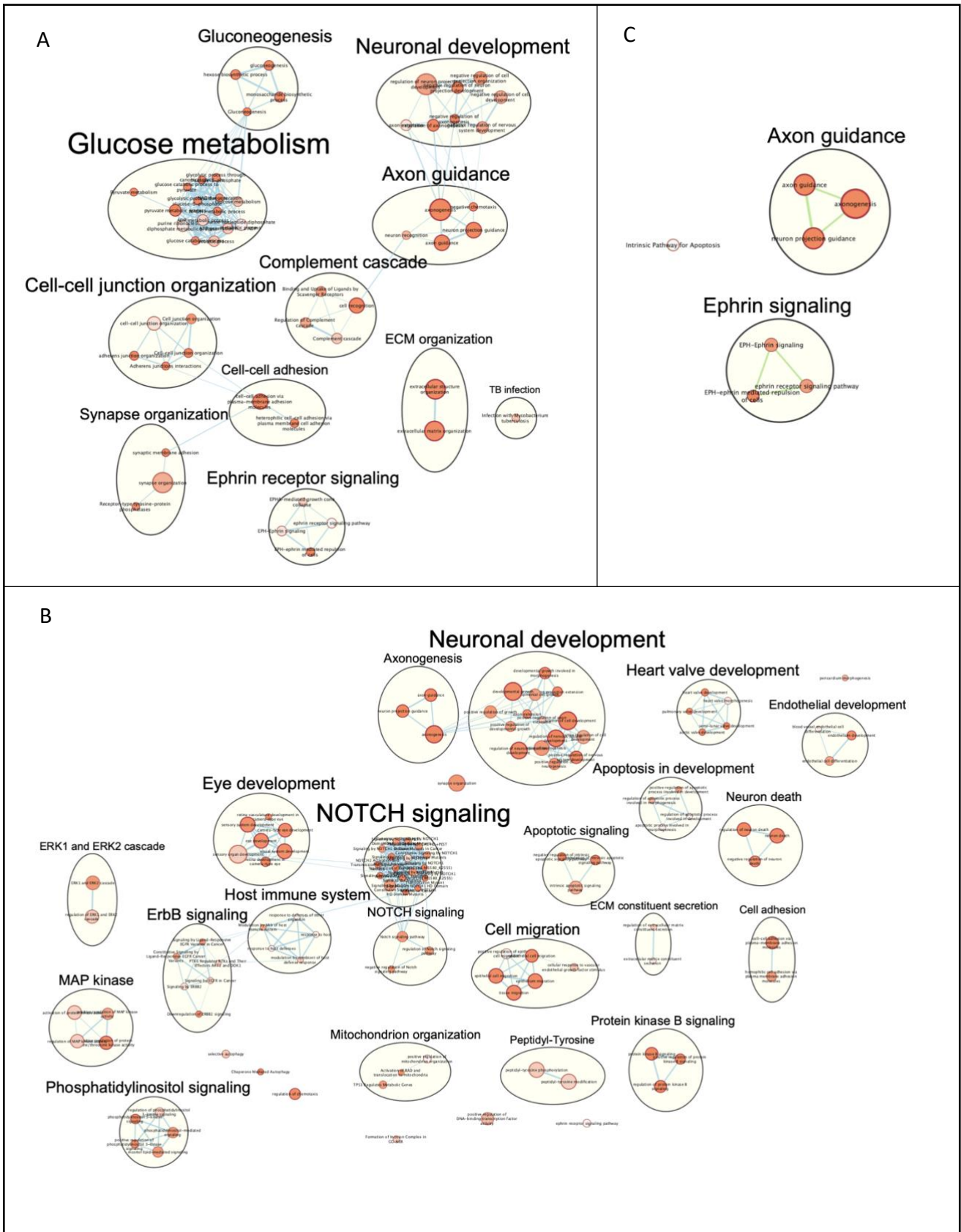
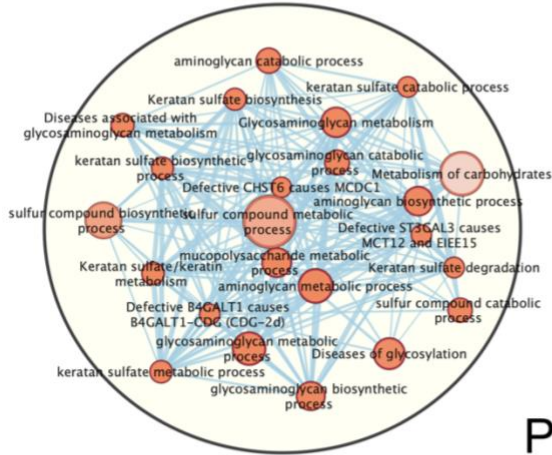
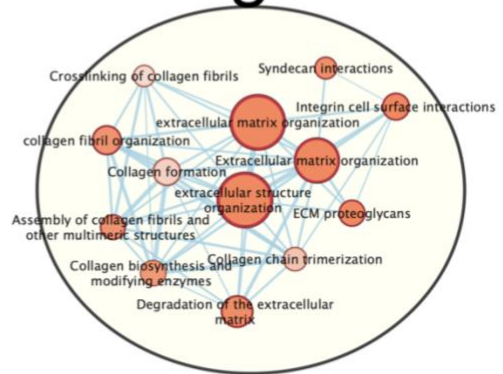


Figure 13. Pathway analyses based on CSF-protein analyses of *GMNC* variants within the EMIF dataset (A), the WUSTL dataset (B). (C) displays the overlapping functional pathways between the different datasets.

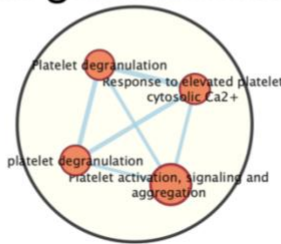
Glycosaminoglycan metabolism



ECM organization



Platelet degranulation



Scavenger receptors



Regulation of Insulin-like Growth Factor (IGF) transport and uptake by Insulin-like Growth Factor Binding Proteins (IGFBPs)

transmembrane receptor protein serine/threonine kinase signaling pathway

Figure 14. Pathway analyses based on CSF-protein analyses of GMNC variants within the EMIF dataset.

Supplementary list of authors

EADB

Altenstein Slawek^{1,2}, Brosseron Frederic^{3,4}, Burow Lena⁵, Cetindag Arda⁶, Ewers Michael^{7,8}, Fenski Friederike⁶, Fliessbach Klaus^{3,4}, Glanz Wenzel⁹, Janowitz Daniel⁸, Kilimann Ingo^{10,11}, Maier Franziska¹², Metzger Coraline D.^{9,13}, Munk Matthias H.^{14,15}, Preis Lukas⁶, Spruth Eike J.^{1,6}.

1. German Center for Neurodegenerative Diseases (DZNE), Berlin, Germany.
2. Department of Psychiatry and Psychotherapy, Charité, Berlin, Germany.
3. German Center for Neurodegenerative Diseases (DZNE), Bonn, Germany.
4. University of Bonn Medical Center, Dept. of Neurodegenerative Disease and Geriatric Psychiatry/Psychiatry, Bonn, Germany.
5. Department of Psychiatry and Psychotherapy, University Hospital, LMU Munich, Munich, Germany.
6. Charité-Universitätsmedizin Berlin, Campus Benjamin Franklin, Department of Psychiatry, Berlin, Germany.
7. German Center for Neurodegenerative Diseases (DZNE, Munich), Munich, Germany.
8. Institute for Stroke and Dementia Research (ISD), University Hospital, LMU Munich, Munich, Germany.
9. German Center for Neurodegenerative Diseases (DZNE), Magdeburg, Germany.
10. German Center for Neurodegenerative Diseases (DZNE), Rostock, Germany.
11. Department of Psychosomatic Medicine, Rostock University Medical Center, Rostock, Germany.
12. Department of Psychiatry, University of Cologne, Medical Faculty, Cologne, Germany.
13. Institute of Cognitive Neurology and Dementia Research (IKND), Otto-von-Guericke University, Magdeburg, Germany.
14. Institute of Cognitive Neurology and Dementia Research (IKND), Otto-von-Guericke University, Magdeburg, Germany.
15. Section for Dementia Research, Hertie Institute for Clinical Brain Research and Department of Psychiatry and Psychotherapy, University of Tübingen, Tübingen, Germany.

The GR@ACE study group

Aguilar Miquel^{1,2}, Aguilera Nuria³, Alarcon Emilio³, Alegret Montserrat^{3,4}, Boada Mercè^{3,4}, Buendia Mar³, Cano Amanda³, Cañabate Pilar^{3,4}, Carracedo Angel^{6,7}, Corbatón-Anchuelo A⁸, de Rojas Itziar^{3,4}, Diego Susana³, Espinosa Ana^{3,4}, Gailhagenet Anna³, García-González Pablo^{3,4}, Guitart Marina³, González-Pérez Antonio⁹, Ibarria Marta³, Lafuente Asunción³, Macias Juan¹⁰, Maroñas Olalla⁶, Martín Elvira³, Martínez Maria Teresa⁸, Marquié Marta^{3,4}, Montreal Laura³, Moreno-Grau Sonia^{3,4}, Moreno Mariona³, Raúl Nuñez-Llaves³, Olivé Clàudia¹, Orellana Adelina^{3,4}, Ortega Gemma^{3,4}, Pancho Ana³, Pelejà Ester³, Pérez-Cordon Alba³, Pineda Juan A¹⁰, Puerta Raquel³, Preckler Silvia³, Quintela Inés⁵, Real Luis Miguel^{5,10}, Rosende-Roca Maitee³, Ruiz Agustín^{3,4}, Sáez Maria Eugenia⁹, Sanabria Angela^{3,4}, Serrano-Rios Manuel⁸, Sotolongo-Grau Oscar³, Tárraga Luís^{3,4}, Valero Sergi^{3,4}, Vargas Liliana¹.

1. Memory Disorders Unit, Department of Neurology, Hospital Universitari Mutua de Terrassa, Terrassa, Spain.
2. Fundació per a la Recerca Biomèdica i Social Mútua de Terrassa, Terrassa, Spain.
3. Research Center and Memory clinic. ACE Alzheimer Center Barcelona, Universitat Internacional de Catalunya, Spain.
4. CIBERNED, Center for Networked Biomedical Research on Neurodegenerative Diseases, National Institute of Health Carlos III, Ministry of Economy and Competitiveness, Spain,
5. Dep. of Surgery, Biochemistry and Molecular Biology, School of Medicine. University of Málaga. Málaga, Spain,
6. Grupo de Medicina Xenómica, Centro Nacional de Genotipado (CEGEN-PRB5-ISCI). Universidad de Santiago de Compostela, Santiago de Compostela, Spain.
7. Fundación Pública Galega de Medicina Xenómica- CIBERER-IDIS, Santiago de Compostela, Spain.
8. Centro de Investigación Biomédica en Red de Diabetes y Enfermedades Metabólicas Asociadas, CIBERDEM, Spain, Hospital Clínico San Carlos, Madrid, Spain,
9. CAEBI. Centro Andaluz de Estudios Bioinformáticos, Sevilla, Spain
10. Unidad Clínica de Enfermedades Infecciosas y Microbiología. Hospital Universitario de Valme, Sevilla, Spain.