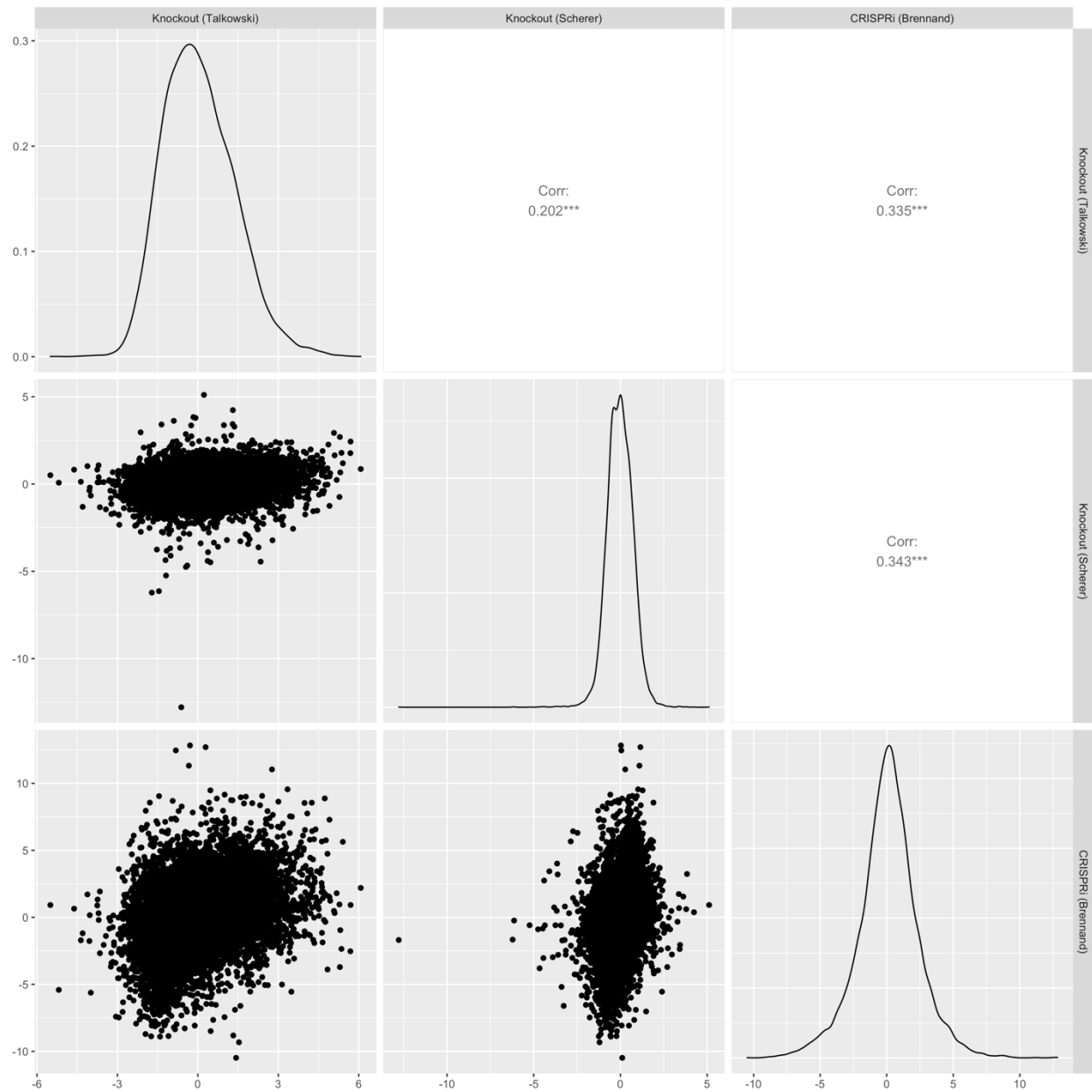
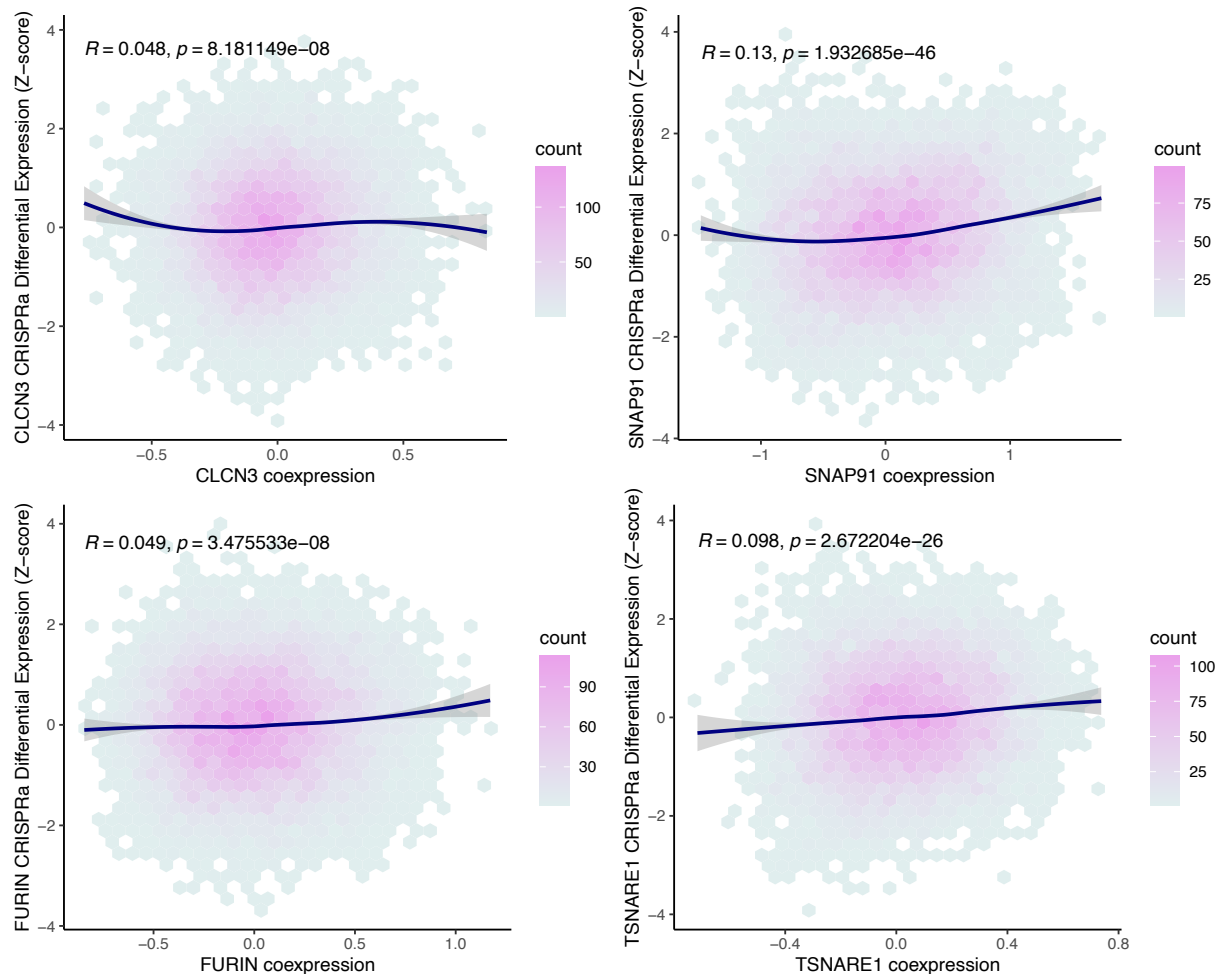


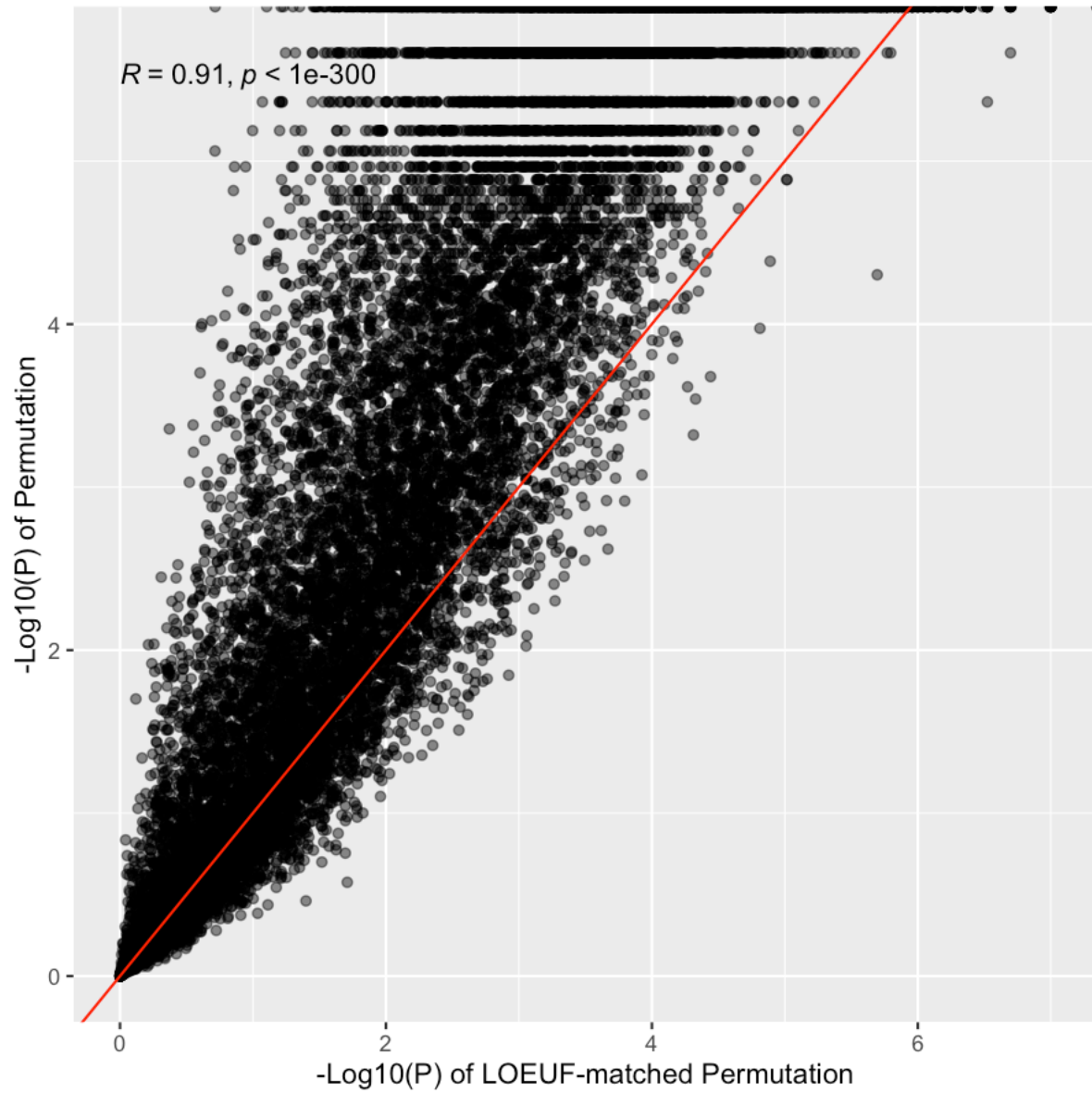
Supplementary Figures



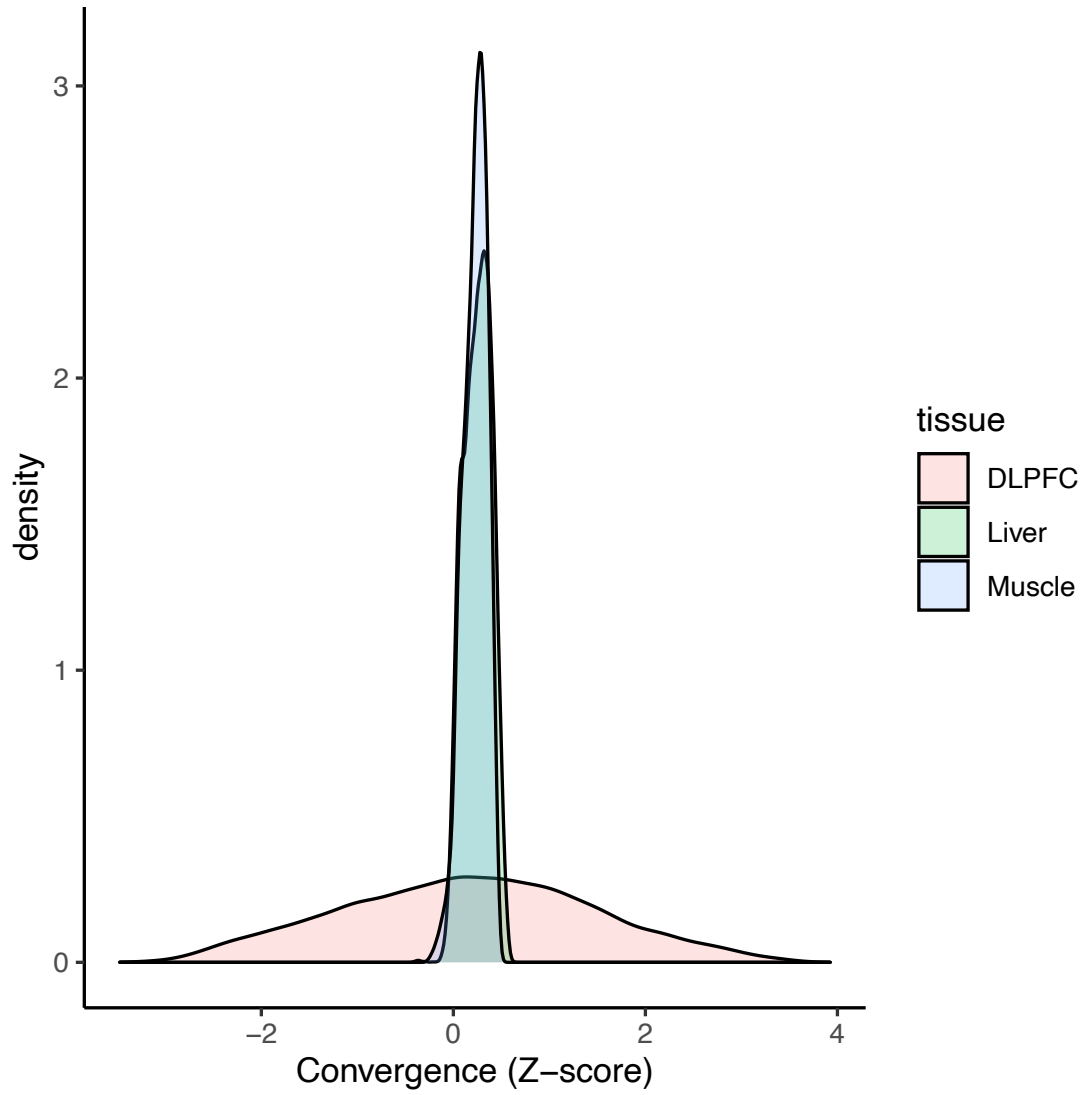
Supplementary Figure 1. Correlation of differential expression between different *SCN2A* experiments. Differential expression represented with Z-scores.



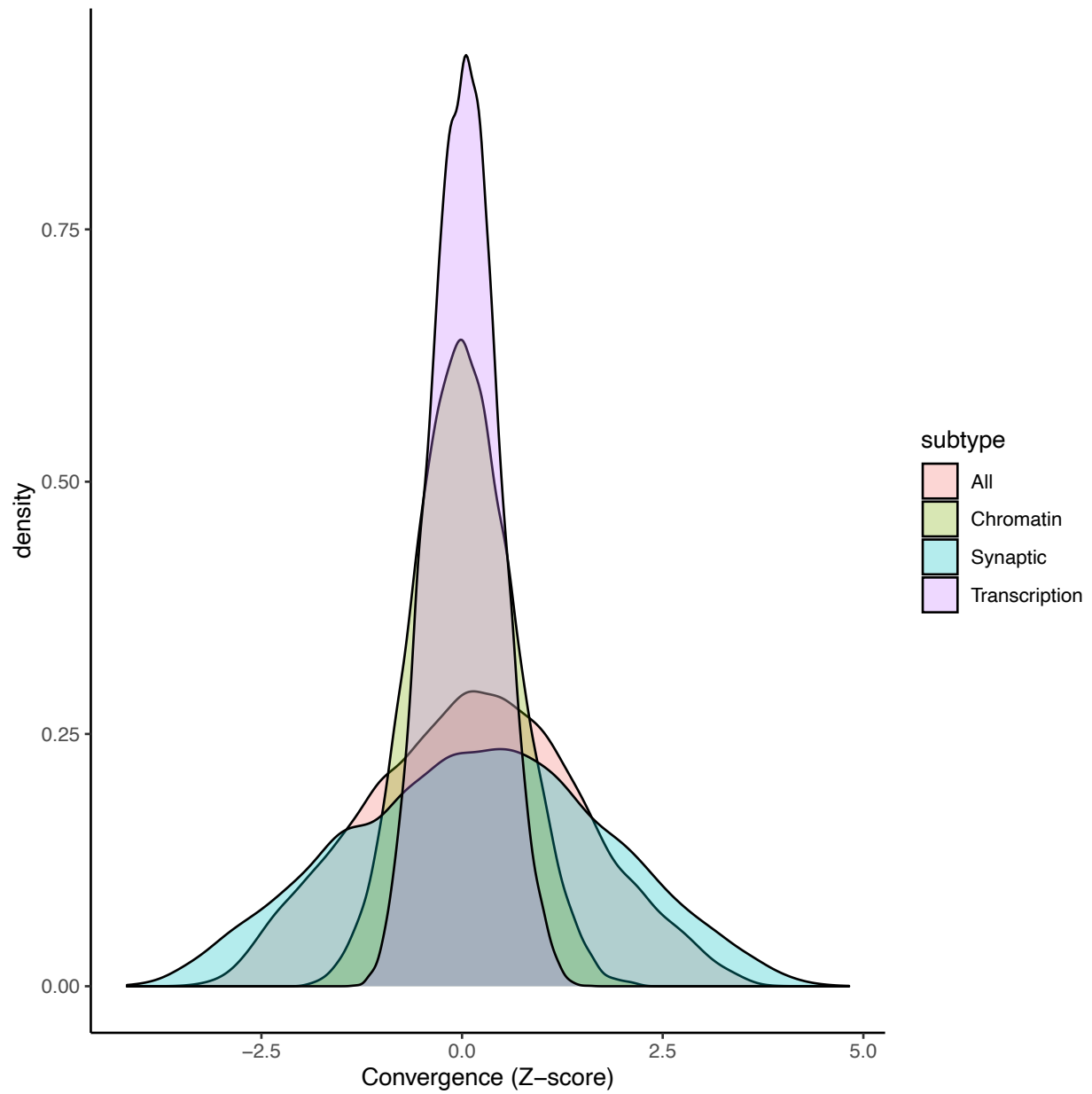
Supplementary Figure 2. Coexpression positively correlates with differential expression for CRISPR activation. Coexpression represented as a Fisher transformed Pearson's correlation Z-score. A Pearson correlation was done to assess the correlation between coexpression and differential expression. The curve for each panel was fitted with a locally weighted smoothing (LOESS) regression.



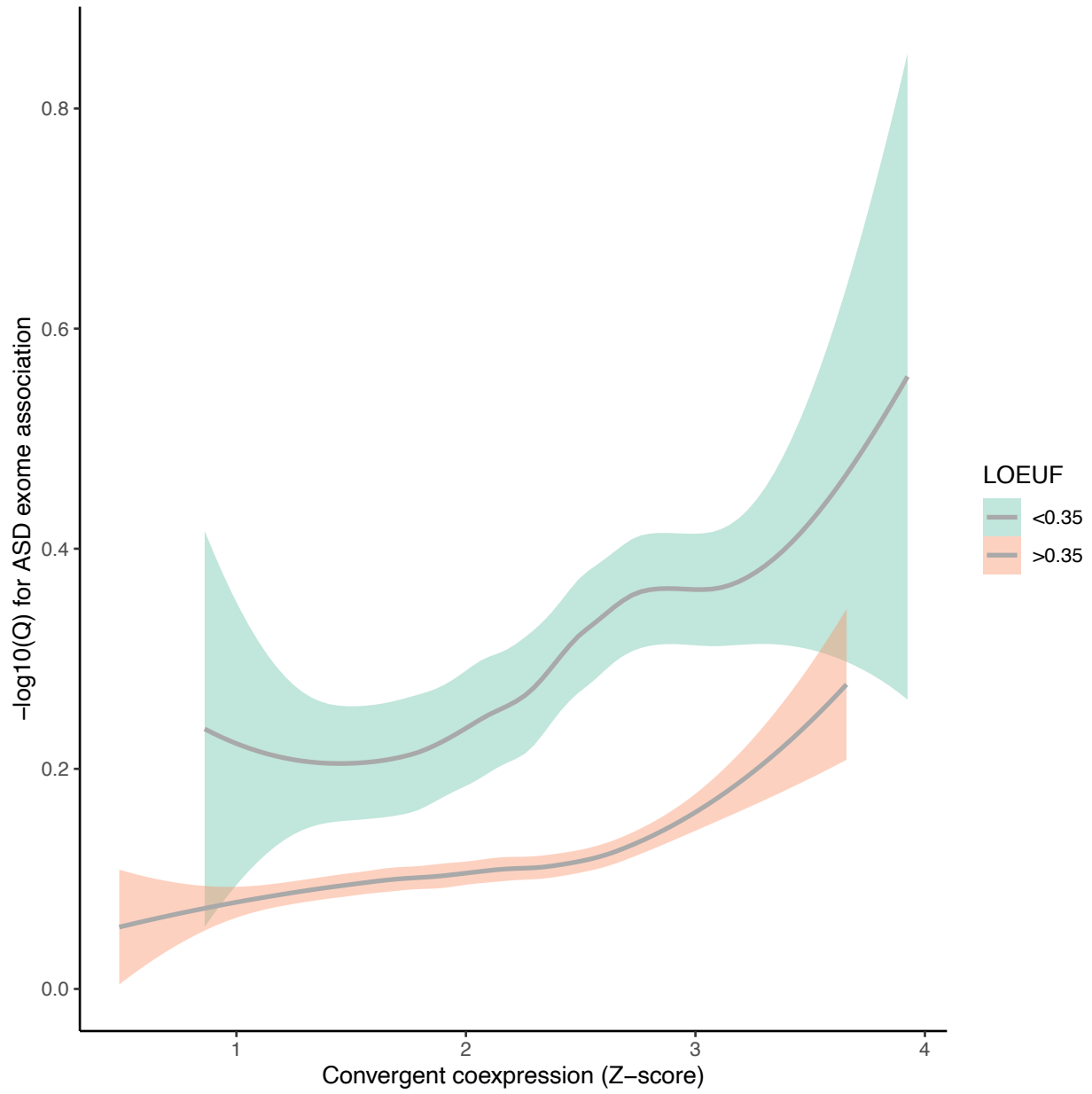
Supplementary Figure 3. LOEUF-adjusted permutation has similar ranks of genes to unadjusted. Correlation was done using Spearman's rank correlation.



Supplementary Figure 4. Transcriptional convergence of high confidence ASD genes are specific to the brain.



Supplementary Figure 5. Transcriptional convergence is strongly driven by synaptic genes.



Supplementary Figure 6. Convergence identifies both tolerant and intolerant genes associated with ASD.