

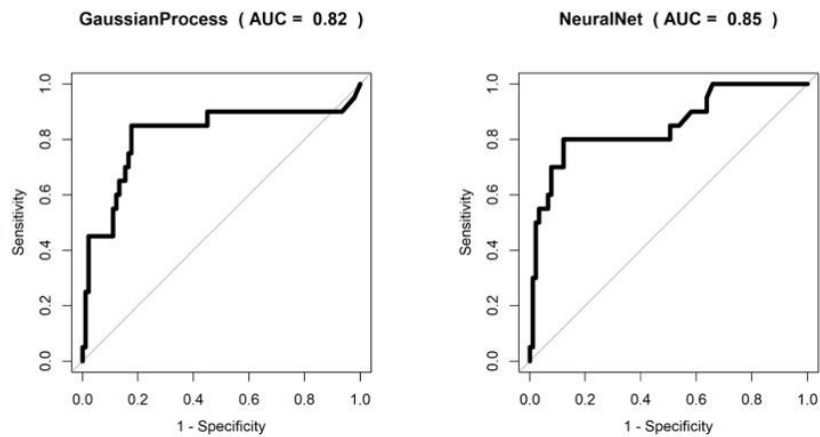
Discriminatory ability of gas chromatography-ion mobility spectrometry to identify patients hospitalised with COVID-19 and predict prognosis

Supplementary Material

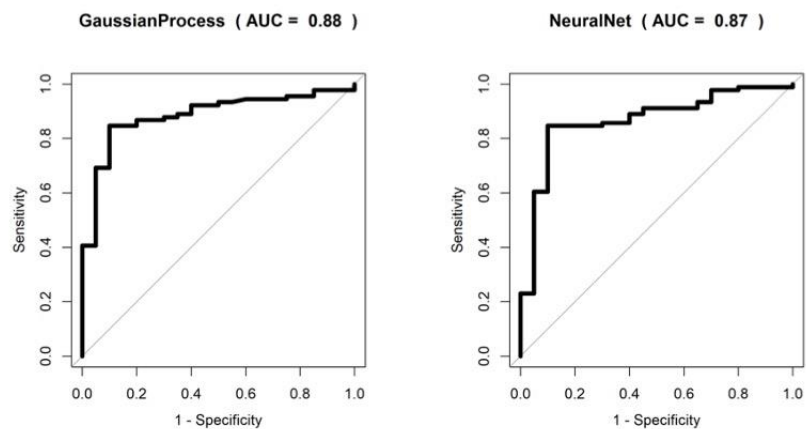
Supplementary figure 1

Receiver Operator Characteristic curves for the two different classifiers used to distinguish between COVID-19 vs Healthy Control, COVID-19 vs Respiratory control, COVID-19 inpatients that subsequently required CPAP vs COVID-19 inpatients with no subsequent requirement for CPAP

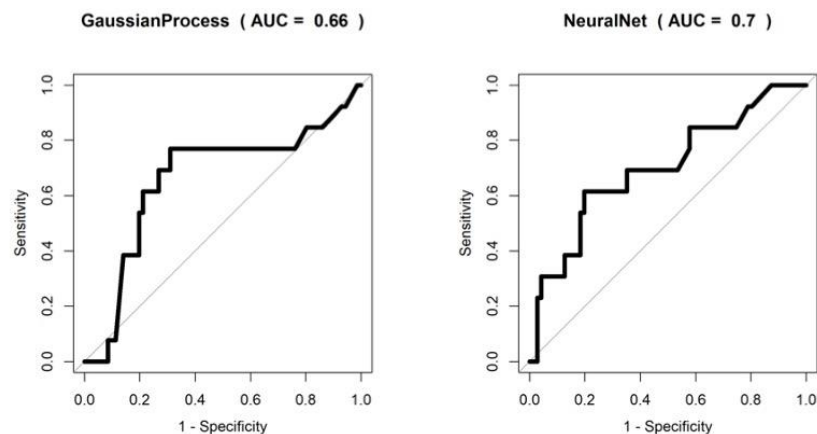
COVID-19 vs Healthy Control



COVID-19 vs Respiratory control



COVID-19 inpatients that subsequently required CPAP vs COVID-19 inpatients with no subsequent requirement for CPAP



Supplementary picture 1

Collection of breath sample into 10ml syringe

Image removed as it contains a photograph of a person. Please contact the corresponding author to request a copy of this picture.

Supplementary picture 2

GC-IMS Breath analysis instrument (G.A.S. BreathSpec™)

