

## Wastewater-based detection of an influenza outbreak

Marlene K. Wolfe<sup>1</sup>, Dorothea Duong<sup>2</sup>, Kevin M. Bakker<sup>3</sup>, Michelle Ammerman<sup>4</sup>, Lindsey Mortenson<sup>5</sup>, Bridgette Hughes<sup>2</sup>, Emily T. Martin<sup>3</sup>, Bradley J. White<sup>2</sup>, Alexandria B. Boehm<sup>6</sup>, Krista R. Wigginton<sup>4</sup>

<sup>1</sup>Gangarosa Department of Environmental Health, Rollins School of Public Health, Emory University, 1518 Clifton Rd, Atlanta, GA, USA, 30322

<sup>2</sup>Verily Life Sciences, South San Francisco, CA 94080, USA

<sup>3</sup>Department of Epidemiology, University of Michigan, Ann Arbor, MI 48109, USA

<sup>4</sup>Department of Civil & Environmental Engineering, University of Michigan, Ann Arbor, Michigan 48109, USA

<sup>5</sup>University Health Service, University of Michigan, Ann Arbor, MI 48109, USA

<sup>6</sup>Department of Civil & Environmental Engineering, Stanford University, Stanford, CA 94305, USA

### **Abstract** (70 words):

Traditional influenza surveillance informs control strategies but can lag behind outbreak onset and undercount cases, while wastewater surveillance is effective for monitoring near real-time dynamics of outbreaks but has not been attempted for influenza. We quantified Influenza A virus RNA in wastewater during an active outbreak. RNA concentrations were strongly associated with reported clinical cases and reflected the outbreak pattern and magnitude, suggesting this approach could aid in early detection.

Influenza surveillance is critical for determining the timing, location, and magnitude of outbreaks. Public health agencies use several combined data sources for influenza surveillance, including outpatient visits, hospitalizations, and clinical laboratory results. Even when taken together, these methods can take 1-2 weeks or longer to detect increases in influenza activity. Moreover, these surveillance systems generally characterize the beginning and peak of influenza season rather than their magnitude<sup>1</sup>, and only capture a small fraction of influenza illnesses.<sup>2</sup> Milder illnesses, infections in communities with limited access to medical care, and outbreaks occurring outside of a “typical” influenza season are generally unaccounted for in clinician-initiated testing. The COVID-19 pandemic has highlighted the need for more robust estimates and models of respiratory virus circulation, especially methods that can differentiate the causative agents of outbreaks and identify outbreaks occurring outside of the typical seasonal patterns.

Wastewater-based epidemiology (WBE) is a non-traditional surveillance technique that has recently been adopted widely. Other alternative surveillance approaches have been proposed to augment conventional methods for influenza, including online activity<sup>3</sup> and symptom data<sup>2</sup>; however, these tend to be non-specific to influenza and biased<sup>2,4</sup>. WBE identifies genetic material and is therefore highly specific to a pathogen, and a number of teams have demonstrated that SARS-CoV-2 RNA levels in wastewater correlate with community incidence rates and trends<sup>5</sup> and identify the presence and trends of variants of concern<sup>6</sup>. Fecal shedding of viruses that primarily infect the respiratory tract has been poorly characterized, so WBE has not historically been used as a tool for these viruses. However, many respiratory viruses such as RSV and influenza A are shed and detectable in stool<sup>7,8,9,10</sup>. We have built on our successful deployment of WBE for COVID-19 surveillance to expand the use of these tools first for RSV<sup>11</sup>, and in this study for the influenza A virus (IAV). Furthermore, ongoing control measures to mitigate the transmission of COVID-19 have also dramatically limited the transmission of influenza<sup>12</sup>, limiting real-world testing of wastewater surveillance during influenza outbreaks.

In late 2021, the University of Michigan (UM) in Ann Arbor, MI (USA) experienced a rapid increase in Influenza A (H3N2) cases, representing some of the first detected influenza activity in the United States since the start of the COVID-19 pandemic<sup>13</sup>. Given the outbreak’s novelty, several agencies—including members of our team—collaborated to collect high-resolution clinical data beyond usual surveillance<sup>13</sup>. This activity was conducted consistent with applicable federal law and determined not regulated by the University of Michigan IRB (HUM00209156). At the same time, our team was actively collecting and archiving daily wastewater solids from the Ann Arbor Wastewater Treatment plant, which serves the city of Ann Arbor and the UM campus, for COVID-19 surveillance. Combined, the clinical influenza data and wastewater samples provide an opportunity to assess whether IAV RNA is detectable in wastewater solids and if so, determine the relationship between wastewater concentrations and clinical data.

We found that influenza A RNA in community wastewater was correlated with clinical cases. The first clinical case was reported by the UM University Health Service (UHS) on October 6 2021. No more cases were reported to UHS until October 20, and the outbreak then rose to a peak of 46% test positivity and a maximum of 84 daily cases on November 10 2021 (Fig 1, Fig S1). The IAV M1 gene was measured in archived wastewater samples from October 4 to December 4 2021; measurements were below the detection limit (~500 copies/g) from October 4 until the first positive measurement on October 21 2021.

IAV RNA levels rose and peaked on November 17 2021 before declining and stabilizing until the end of the study in early December (Figure 1). IAV M1 gene concentrations ranged from non-detect to  $2.63 \times 10^4$  copies/g (median  $1.03 \times 10^4$  copies/g). Overall, 857 cases were reported by UHS during the study, accounting for 97% of cases reported at the county level and thus approximating the cases in the Ann Arbor sewershed (Fig S2).

IAV positivity rate and incidence rate reported by UHS closely reflect the trends in wastewater concentrations (Fig 2). Daily IAV RNA concentrations were highly associated with both 5-day smoothed clinical positivity rate and incidence rate as estimated from the number of cases and sewershed population of 130,000 ( $\tau = 0.62$ ,  $p < 10^{-8}$  for positivity rate,  $\tau = 0.58$ ,  $p < 10^{-7}$  for incidence rate,  $N = 45$ ). Results were not substantially different when wastewater concentrations were normalized by an endogenous control (pepper mild mottle virus) or when county level data was used for incidence rate (see SI, Table S1, Fig S3, Fig S4). In a comparison of four samples, RNA was more reliably detected and in higher concentrations in solids compared to liquid wastewater (details in SI). The relationship between IAV RNA and clinical positivity rate indicates that a 1  $\log_{10}$  increase in influenza A RNA is associated with a 0.9  $\log_{10}$  increase in IAV positivity rate ( $r^2 = 0.76$ ,  $p < 10^{-14}$ ,  $N = 45$ ) and a 1.2  $\log_{10}$  increase in cases ( $r^2 = 0.77$ ,  $p < 10^{-14}$ ,  $N = 45$ ).

*Comparison with SARS-CoV-2 dynamics:* The strength of the association between IAV RNA concentrations and clinical cases is similar to those reported for SARS-CoV-2 measured across eight publicly owned treatment works [Kendall's tau value of 0.66 ( $p < 0.001$ ) compared to 0.60 ( $p < 0.001$ ) for IAV]. The relationship between wastewater measurements and incidence rate is different between SARS-CoV-2 and IAV. A one  $\log_{10}$  increase in the SARS-CoV-2 RNA corresponded to a 0.59  $\log_{10}$  increase in incidence rate<sup>5</sup> compared to a 1.2- $\log_{10}$  increase reported here. This observation could be due to differences in shedding of the virus between SARS-CoV-2 and IAV, as well as differences in clinical testing and reporting of the two diseases. The IAV RNA concentrations in wastewater solids were similar to those of SARS-CoV-2 at the same community incidence rate; for example an incidence rate of 10/100,000 for both IAV and COVID-19 corresponded to approximately  $10^4$  IAV and SARS-CoV-2  $gc/g^5$ . IAV RNA, like SARS-CoV-2 RNA, appeared at higher rates at higher magnitudes in solids than liquid wastewater (details in SI).

The first detection in archived wastewater solids occurred in mid-October as cases first started to rise. Specifically, IAV was first detected in a sample collected on October 21. Cases began to rise after October 20, following an initial case reported on October 6. Overall, the wastewater levels appear to lag slightly behind the outbreak case data when cases are reported by test date. Additional research is necessary to characterize the potential leading or lagging of wastewater compared to influenza symptom onset, testing, and reporting dates.

*Wastewater as an influenza surveillance tool:* Our data demonstrate that wastewater monitoring can effectively detect an outbreak of Influenza A/H3N2. We focused this work on IAV due to its expected higher concentration in wastewater (>99% of influenza cases reported to CDC in the last six months were IAV H3N2). Longitudinal studies of shedding through infection with the different types and subtypes in a

range of populations (e.g., vaccine status, age, etc.) would help contextualize these results for H3N2 and indicate if the same relationships between wastewater concentrations and incidence would be expected for the other influenza types and subtypes and in different communities.

Wastewater surveillance of influenza could aid clinical surveillance, especially when traditional systems are not fully engaged (e.g. outside of typical flu season). Relative levels of different co-circulating influenza strains and types in a community could be measured simultaneously and measurements could provide early identification of drifted strains not covered by the vaccine, a situation that would prompt additional public health guidance for testing and treatment<sup>14</sup>. Wastewater surveillance could also prove efficient for monitoring for rare but impactful emergencies in settings with increased interactions at the animal-human interface, where introductions of new influenza strains have uncertain and potentially severe public health consequences<sup>15,16</sup>. Finally, distinguishing between influenza-like illnesses (ILIs) can be challenging; the detection of this outbreak by the University Health System was due largely to equipment that facilitated frequent testing with a 4-plex virus panel. This type of in-house clinical testing is not widely available. The combination of influenza and SARS-CoV-2 wastewater testing with other viruses in a single panel would give public health entities the ability to monitor several respiratory diseases in the community simultaneously (e.g., SARS-CoV-2, RSV, adenoviruses, etc.) and anticipate the disease occurrence and overall strain on local healthcare systems that could be caused by multiple, coincident epidemics. Given what the research community has learned about respiratory virus burden and seasonality from COVID-19, we anticipate wastewater surveillance will ultimately play an important role in improving the health system and public health preparedness.

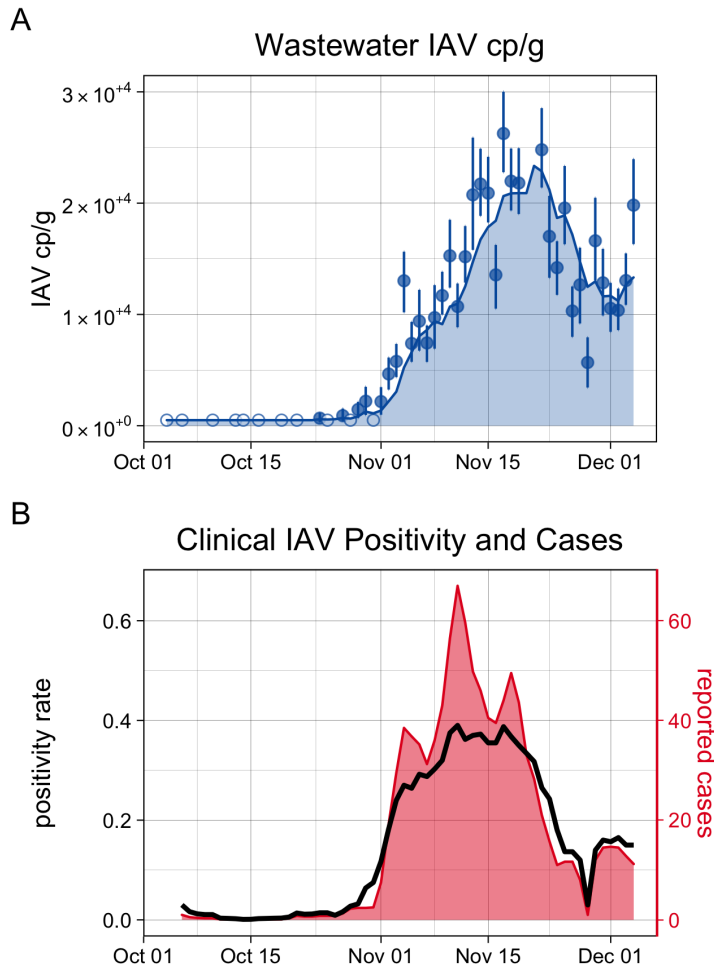


Fig 1. Time series of the University of Michigan outbreak, as shown in wastewater IAV concentrations and confirmed influenza A cases from October to December 2021. A) Points show daily IAV M1 RNA concentrations in copies/g dry weight of wastewater solids with error bars representing standard deviations as total errors from the ddPCR instrument software. Open circles indicate non-detect measurements. The area under the line represents the 5 day smoothed average copies/g IAV M1 RNA in wastewater, B) The black line represents the 5 day smoothed positivity rate of clinical specimens, and the red area represents the 5 day smoothed number of reported cases.

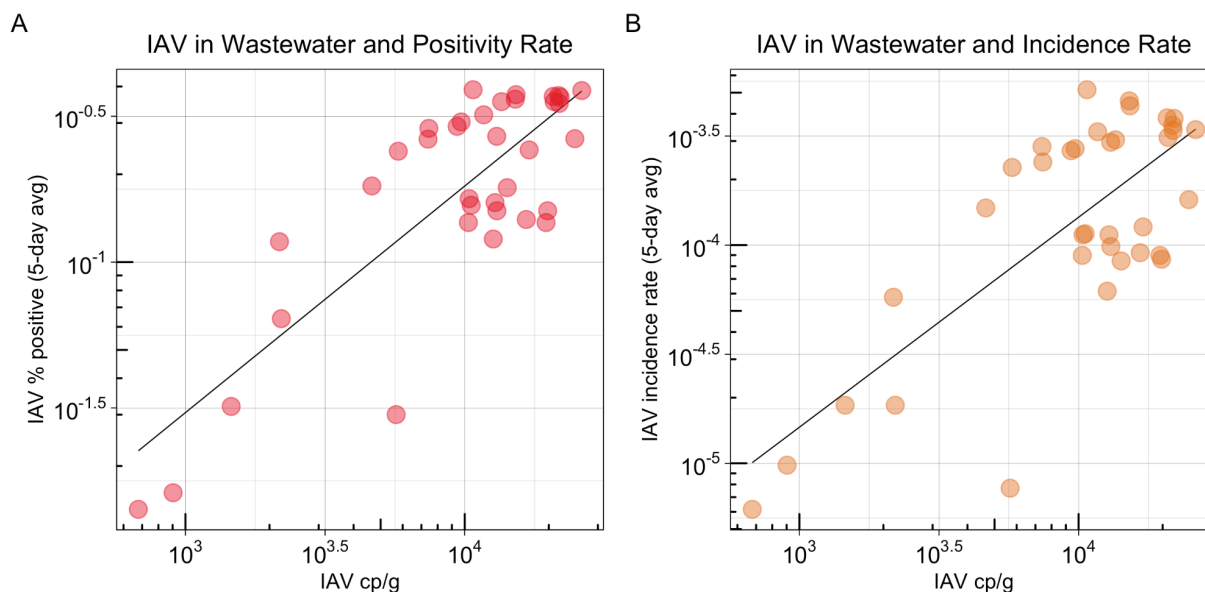


Fig 2. Association between positive daily Influenza A M1 gene concentration per gram dry weight and A) 5 day smoothed clinical positivity rate and B) 5 day smoothed incidence rate (as determined using the number of cases and estimated sewershed population of 130,000). The line represents the linear association between the two measurements.

## Methods

**Assay choice for Influenza A.** Droplet digital PCR was used to identify a gene specific to Influenza A. An assay provided by the United States Centers for Disease Control and Prevention (CDC) was used to target the M1 gene of Influenza A<sup>17</sup>. Multiple primer sets are available for this target from the CDC; based on their alignment with Influenza A sequences over the past 4 years in the United States primers INF A forward 1 and reverse 1 were chosen.

**Wastewater samples.** Samples were collected from the City of Ann Arbor Wastewater Treatment Plant, a publicly owned treatment works (POTW) that serves Ann Arbor, Michigan, USA, including the University of Michigan Ann Arbor campus. The Ann Arbor Wastewater treatment plant (AA WWTP) receives an inflow of 17 million gallons per day and serves a sewershed with approximately 130,000 people. Further details on the POTW are provided in Kim et al.<sup>18</sup> and in the SI. During the study period, AA WWTP staff collected daily 24 hour composite settled solids and influent samples in sterile 50 ml conical tubes. These samples were stored immediately at 4°C and sent by courier to a laboratory at the University of Michigan where they were maintained at 4°C unless otherwise described below.

**Sample storage and preparation.** Whole samples were pasteurized (60°C for 1 hour) and subsequently dewatered by centrifugation. Samples from 10/4/2021 - 12/4/2021 were selected for analysis to match the time period of a known outbreak, plus four additional samples from the prior months with low

influenza incidence (11 June, 13 August, and 16 and 30 September 2021). Samples were dewatered by centrifugation and resuspended in a buffer prior to direct extraction as described in Wolfe et al. Influent samples were concentrated using PEG to precipitate viruses as described by Flood *et al*<sup>19</sup>. Additional details are available in the SI.

**RNA extraction.** For all samples, RNA extraction was performed on 10 replicate aliquots of dewatered settled solids or PEG pellet as described in Wolfe et al<sup>5</sup>. To remove inhibitors, samples were passed through a Zymo OneStep-96 PCR Inhibitor Removal Kit (Zymo Research, CA). Negative controls (water) and positive controls (BCoV spiked in DNA/RNA shield) were included for each extraction plate and 4  $\mu$ L of Poly-A carrier RNA was added to the extraction positive controls prior to extraction.

**Droplet digital RT-PCR.** Extracted RNA samples were immediately analyzed using two multiplex droplet digital RT-PCR (ddPCR) assays. One multiplex assay was run for the Influenza A M1 gene and SARS-CoV-2 N and S genes; Influenza A M1 gene alone is presented here. A second multiplex assay was run targeting the pepper mild mottle virus (PMMoV) and bovine coronavirus (BCoV), and is described in detail elsewhere<sup>5</sup>. PMMoV is a plant virus that is shed in human stool and abundant in wastewater globally<sup>20,21</sup>. It is used here to control for fecal strength and recovery of targets from wastewater<sup>22</sup>. BCoV was added to samples for use as a spiked recovery control; all samples were required to have greater than 10% BCoV recovery. PCR negative and positive controls and extraction controls were included to ensure no contamination as described in Wolfe et al<sup>5</sup>. Additional details of assays, controls, and thermocycling conditions are available in the SI.

Each of the 10 replicate RNA extracted aliquots were run in its own well, and the 10 wells were merged for analysis. Thresholding was done using QuantaSoft™ Analysis Pro Software (Bio-Rad, version 1.0.596). Concentrations for each RNA target were converted using dimensional analysis to concentrations per dry weight of wastewater solids in units of copies/g dry weight. Dry weight of the dewatered solids used as input for RNA extraction was determined by drying. Total error includes both error associated with the Poisson distribution and variability among merged replicates, and is reported as standard deviations.

**Clinical data:** The daily fraction of samples positive for Influenza A (“positivity rate”) and the total number of positive samples daily (hereafter “daily cases”) were provided by University Health Service at the University of Michigan (UHS) and by Washtenaw County. A daily incidence rate was calculated using the number of daily cases and the sewershed population of 130,000. A 5 day centered, smoothed average was used to limit the impact of this testing bias on analysis. As UHS data accounted for 97% of cases from the outbreak, UHS data was used for analysis. County data was analyzed for comparison and is available in the SI.

**Statistical Analysis:** Statistical analysis was performed on results from the outbreak period from 10/4/2021 - 12/4/2021. The primary analysis was performed using daily Influenza A M1 gene concentration along with 5-day smoothed influenza A positivity rate and incidence rate. Analysis was repeated with county data and using influenza A concentrations normalized by the concentration of PMMoV. We tested the null hypothesis that 5 day smoothed wastewater concentrations were not



associated with 5 day smoothed positivity rates from the UM using Kendall's tau as data were not normally distributed (Shapiro-Wilk normality test,  $p < 0.05$ ). The rate of change of Influenza A incidence and positivity rate with Influenza A wastewater concentrations was estimated using linear regression. Measurements below the detection limit were replaced with 500 copies/g (the approximate detection limit), and days with 0 clinical cases reported were replaced with 0.1 for analysis. All statistical analyses were implemented in R studio (version 1.4.1106).

### Funding sources and acknowledgements

CDC Foundation, MDHHS, UMich COE Skunkworks

We thank Miranda Delahoy (CDC), Kate Kusiak Galvin (UMich), Earl Kenzie (AAWWTP), Kyle Weinman (AAWWTP) for their contributions to and support of this work.

### References

- (1) DeJonge, P. M.; Monto, A. S.; Malosh, R. E.; Petrie, J. G.; Segaloff, H. E.; McSpadden, E.; Cheng, C.; Bazzi, L.; Callear, A.; Johnson, E.; Truscon, R.; Martin, E. T. Distinct Influenza Surveillance Networks and Their Agreement in Recording Regional Influenza Circulation: Experience from Southeast Michigan. *Influenza Other Respir. Viruses* **2021**. <https://doi.org/10.1111/irv.12944>.
- (2) Miller, A. C.; Peterson, R. A.; Singh, I.; Pilewski, S.; Polgreen, P. M. Improving State-Level Influenza Surveillance by Incorporating Real-Time Smartphone-Connected Thermometer Readings Across Different Geographic Domains. *Open Forum Infect. Dis.* **2019**, *6* (11), ofz455. <https://doi.org/10.1093/ofid/ofz455>.
- (3) Salathé, M.; Freifeld, C. C.; Mekaru, S. R.; Tomasulo, A. F.; Brownstein, J. S. Influenza A (H7N9) and the Importance of Digital Epidemiology. *N. Engl. J. Med.* **2013**, *369* (5), 401–404. <https://doi.org/10.1056/NEJMp1307752>.
- (4) Shaman, J.; Karspeck, A.; Yang, W.; Tamerius, J.; Lipsitch, M. Real-Time Influenza Forecasts during the 2012–2013 Season. *Nat. Commun.* **2013**, *4* (1), 2837. <https://doi.org/10.1038/ncomms3837>.
- (5) Wolfe, M. K.; Topol, A.; Knudson, A.; Simpson, A.; White, B.; Vugia, D. J.; Yu, A. T.; Li, L.; Balliet, M.; Stoddard, P.; Han, G. S.; Wigginton, K. R.; Boehm, A. B. High-Frequency, High-Throughput Quantification of SARS-CoV-2 RNA in Wastewater Settled Solids at Eight Publicly Owned Treatment Works in Northern California Shows Strong Association with COVID-19 Incidence. *mSystems* *6* (5), e00829-21. <https://doi.org/10.1128/mSystems.00829-21>.
- (6) Kirby, A. E. Notes from the Field: Early Evidence of the SARS-CoV-2 B.1.1.529 (Omicron) Variant in Community Wastewater — United States, November–December 2021. *MMWR Morb. Mortal. Wkly. Rep.* **2022**, *71*. <https://doi.org/10.15585/mmwr.mm7103a5>.
- (7) Chan, M. C. W.; Lee, N.; Chan, P. K. S.; To, K. F.; Wong, R. Y. K.; Ho, W.-S.; Ngai, K. L. K.; Sung, J. J. Y. Seasonal Influenza A Virus in Feces of Hospitalized Adults. *Emerg. Infect. Dis.* **2011**, *17* (11), 2038–2042. <https://doi.org/10.3201/eid1711.110205>.
- (8) Hirose, R.; Daidoji, T.; Naito, Y.; Watanabe, Y.; Arai, Y.; Oda, T.; Konishi, H.; Yamawaki, M.; Itoh, Y.; Nakaya, T. Long-Term Detection of Seasonal Influenza RNA in Faeces and Intestine. *Clin. Microbiol. Infect.* **2016**, *22* (9), 813.e1-813.e7. <https://doi.org/10.1016/j.cmi.2016.06.015>.
- (9) Al Khatib, H. A.; Coyle, P. V.; Al Maslamani, M. A.; Al Thani, A. A.; Pathan, S. A.; Yassine, H. M. Molecular and Biological Characterization of Influenza A Viruses Isolated from Human Fecal Samples. *Infect. Genet. Evol.* **2021**, *93*, 104972. <https://doi.org/10.1016/j.meegid.2021.104972>.



- (10) To, K. K. W.; Chan, K.-H.; Li, I. W. S.; Tsang, T.-Y.; Tse, H.; Chan, J. F. W.; Hung, I. F. N.; Lai, S.-T.; Leung, C.-W.; Kwan, Y.-W.; Lau, Y.-L.; Ng, T.-K.; Cheng, V. C. C.; Peiris, J. S. M.; Yuen, K.-Y. Viral Load in Patients Infected with Pandemic H1N1 2009 Influenza A Virus. *J. Med. Virol.* **2010**, *82* (1), 1–7. <https://doi.org/10.1002/jmv.21664>.
- (11) Respiratory Syncytial Virus (RSV) RNA in Wastewater Settled Solids Reflects RSV Clinical Positivity Rates | Environmental Science & Technology Letters <https://pubs.acs.org/doi/10.1021/acs.estlett.1c00963> (accessed 2022 -02 -10).
- (12) Olsen, S. J.; Winn, A. K.; Budd, A. P.; Prill, M. M.; Steel, J.; Midgley, C. M.; Kniss, K.; Burns, E.; Rowe, T.; Foust, A.; Jasso, G.; Merced-Morales, A.; Davis, C. T.; Jang, Y.; Jones, J.; Daly, P.; Gubareva, L.; Barnes, J.; Kondor, R.; Sessions, W.; Smith, C.; Wentworth, D. E.; Garg, S.; Havers, F. P.; Fry, A. M.; Hall, A. J.; Brammer, L.; Silk, B. J. Changes in Influenza and Other Respiratory Virus Activity During the COVID-19 Pandemic — United States, 2020–2021. *Morb. Mortal. Wkly. Rep.* **2021**, *70* (29), 1013–1019. <https://doi.org/10.15585/mmwr.mm7029a1>.
- (13) Delahoy, M. J. Influenza A(H3N2) Outbreak on a University Campus — Michigan, October–November 2021. *MMWR Morb. Mortal. Wkly. Rep.* **2021**, *70*. <https://doi.org/10.15585/mmwr.mm7049e1>.
- (14) HAN Archive - 00443 | Health Alert Network (HAN) <https://emergency.cdc.gov/han/2021/han00443.asp> (accessed 2021 -11 -24).
- (15) Bowman, A. S.; Walia, R. R.; Nolting, J. M.; Vincent, A. L.; Killian, M. L.; Zentkovich, M. M.; Lorbach, J. N.; Lauterbach, S. E.; Anderson, T. K.; Davis, C. T.; Zanders, N.; Jones, J.; Jang, Y.; Lynch, B.; Rodriguez, M. R.; Blanton, L.; Lindstrom, S. E.; Wentworth, D. E.; Schiltz, J.; Averill, J. J.; Forshey, T. Influenza A(H3N2) Virus in Swine at Agricultural Fairs and Transmission to Humans, Michigan and Ohio, USA, 2016. *Emerg. Infect. Dis.* **2017**, *23* (9), 1551–1555. <https://doi.org/10.3201/eid2309.170847>.
- (16) Oliver, I.; Roberts, J.; Brown, C. S.; Byrne, A. M.; Mellon, D.; Hansen, R. D.; Banyard, A. C.; James, J.; Donati, M.; Porter, R.; Ellis, J.; Cogdale, J.; Lackenby, A.; Chand, M.; Dabrera, G.; Brown, I. H.; Zambon, M. A Case of Avian Influenza A(H5N1) in England, January 2022. *Euro Surveill. Bull. Eur. Sur Mal. Transm. Eur. Commun. Dis. Bull.* **2022**, *27* (5). <https://doi.org/10.2807/1560-7917.ES.2022.27.5.2200061>.
- (17) CDC. Research Use Only CDC Flu SC2 Multiplex Assay Primers and Probes <https://www.cdc.gov/coronavirus/2019-ncov/lab/multiplex-primer-probes.html> (accessed 2021 -12 -17).
- (18) Kim, S.; Kennedy, L. C.; Wolfe, M. K.; Criddle, C. S.; Duong, D. H.; Topol, A.; White, B. J.; Kantor, R. S.; Nelson, K. L.; Steele, J. A.; Langlois, K.; Griffith, J. F.; Zimmer-Faust, A. G.; McLellan, S. L.; Schussman, M. K.; Ammerman, M.; Wigginton, K. R.; Bakker, K. M.; Boehm, A. B. SARS-CoV-2 RNA Is Enriched by Orders of Magnitude in Solid Relative to Liquid Wastewater at Publicly Owned Treatment Works. medRxiv November 11, 2021, p 2021.11.10.21266138. <https://doi.org/10.1101/2021.11.10.21266138>.
- (19) Flood, M. T.; D’Souza, N.; Rose, J. B.; Aw, T. G. Methods Evaluation for Rapid Concentration and Quantification of SARS-CoV-2 in Raw Wastewater Using Droplet Digital and Quantitative RT-PCR. *Food Environ. Virol.* **2021**, *13* (3), 303–315. <https://doi.org/10.1007/s12560-021-09488-8>.
- (20) Kitajima, M.; Sassi, H. P.; Torrey, J. R. Pepper Mild Mottle Virus as a Water Quality Indicator. *Npj Clean Water* **2018**, *1* (1), 19. <https://doi.org/10.1038/s41545-018-0019-5>.
- (21) Symonds, E. M.; Nguyen, K. H.; Harwood, V. J.; Breitbart, M. Pepper Mild Mottle Virus: A Plant Pathogen with a Greater Purpose in (Waste)Water Treatment Development and Public Health Management. *Water Res.* **2018**, *144*, 1–12. <https://doi.org/10.1016/j.watres.2018.06.066>.
- (22) McClary-Gutierrez, J. S.; Aanderud, Z. T.; Al-faliti, M.; Duvallet, C.; Gonzalez, R.; Guzman, J.; Holm, R. H.; Jahne, M. A.; Kantor, R. S.; Katsivelis, P.; Kuhn, K. G.; Langan,

L. M.; Mansfeldt, C.; McLellan, S. L.; Mendoza Grijalva, L. M.; Murnane, K. S.; Naughton, C. C.; Packman, A. I.; Paraskevopoulos, S.; Radniecki, T. S.; Roman, F. A.; Shrestha, A.; Stadler, L. B.; Steele, J. A.; Swalla, B. M.; Vikesland, P.; Wartell, B.; Wilusz, C. J.; Wong, J. C. C.; Boehm, A. B.; Halden, R. U.; Bibby, K.; Delgado Vela, J. Standardizing Data Reporting in the Research Community to Enhance the Utility of Open Data for SARS-CoV-2 Wastewater Surveillance. *Environ. Sci. Water Res. Technol.* **2021**, 7 (9), 1545–1551. <https://doi.org/10.1039/D1EW00235J>.