

Reference Range	Age, years (range)	Gender	Comorbidity Index	Severity WHO	Pneumonia (yes/no)	PaO ₂ /FiO ₂ (mmHg)	Drug therapy	Outcome	Time from onset of symptoms to hospital admission, days	Time from hospital admission to discharge home, days	White blood cell count (x10 ⁹ /L)	Neutrophil count (x10 ⁹ /L)	Lymphocyte count (x10 ⁹ /L)	Monocyte count (x10 ⁹ /L)	Eosinophil count (x10 ⁹ /L)	Basophil count (x10 ⁹ /L)	Red blood cell count (x10 ¹² /L)	Platelet count (x10 ⁹ /L)	Lactate dehydrogenase (U/L)	D-dimer (ng/mL)	Serum ferritin (ng/mL)	C-reactive protein (mg/L)	IL-6 (pg/mL)	Anti-IFN-γ antibodies (ng/mL)	Type of vaccine (first+second+third dose)		
Vaccinated COVID-19 patients																											
V1	75-79	M	4	2	yes	295	S	H	6	6	15,5	12,51	1,74	1,16	0,05	0,05	4,54	234	273	602	227	191	303	505,5	0	A+A	
V2	65-69	F	3	0	no	404	-	H	-	9	5,19	2,35	2,39	0,31	0,12	0,02	4,26	325	140	-	95	8	-	0	0	P+P	
V3	55-59	F	8	0	no	314	-	H	-	14	7,91	6,57	0,65	0,59	0,08	0,02	3,3	376	175	1316	381	71	-	1,9	0	P+P	
V4	75-79	M	7	2	yes	309	S, R	H	6	11	8,64	4,83	3,3	0,5	0	0,01	4,1	186	445	770	1295	15	19,9	0	0	P+P	
V5	80-84	M	5	3	yes	271	S	H	6	16	4,03	2,62	1,14	0,25	0,01	0,01	3,6	223	226	866	619	65	32,6	0	0	P+P	
V6	75-79	M	3	2	yes	283	S	H	10	6	8,24	6,86	0,65	0,59	0,11	0,03	3,49	148	281	739	1208	179	-	342,7	0	A+A	
V7	90-94	F	4	3	yes	223	S	H	6	25	5,18	4,35	0,71	0,11	0	0,01	3,98	279	272	1141	591	202	-	594,4	0	P+P	
V8	95-99	F	4	3	yes	168	S	D	11	-	6,6	6,01	0,44	0,14	0	0,01	3,71	442	265	940	2390	191	22,7	0	0	P+P+P	
V9	75-79	F	3	3	yes	285	S, R	H	7	5	3,4	1,92	1,17	0,29	0,01	0,01	5,02	174	240	1037	37	38	23,2	0	0	A+A	
V10	75-79	F	5	2	no	352	R	H	3	5	4,94	3,93	0,76	0,21	0,03	0,01	3,86	133	213	1585	220	71	82,5	0	0	P+P	
V11	75-79	M	4	3	yes	257	S	H	5	5	8,66	7,79	0,5	0,36	0	0,01	3,57	134	223	1184	355	182	-	0	0	N+N	
V12	60-64	M	2	3	yes	309	S	H	7	6	5,49	2,88	2,15	0,39	0,06	0,01	5,5	136	278	642	332	36	41,8	0	0	A+A	
V13	55-59	M	3	3	yes	219	S, R, M	H	4	15	20,7	2,46	17,41	0,81	0	0,02	4,63	149	283	389	709	86	-	0	0	N+N	
V14	90-94	F	4	2	no	-	S	H	14	3	6,81	4,89	1,16	0,73	0,02	0,01	3,81	212	210	1247	442	156	71,2	0	0	P+P	
V15	80-84	F	6	4	yes	233	S	H	10	24	9,54	8,45	0,69	0,38	0	0,02	4,34	182	265	611	1038	35	46,2	0,5	0	P+P	
V16	70-74	M	8	0	no	-	M	H	-	9	6,56	4,39	1,28	0,61	0,22	0,06	4,45	266	200	747	258	5	-	1,0	0	P+P+P	
V17	70-74	M	3	2	no	338	S	H	9	5	4,89	4,13	0,057	0,18	0	0,01	4,84	250	201	292	237	49	43,3	0	0	A+A	
V18	85-89	F	9	3	yes	280	S, T	H	3	10	6,78	5,13	0,77	0,81	0,05	0,02	3,7	172	235	1849	216	23	-	0	0	P+P	
V19	70-74	F	7	4	yes	233	S, R	D	6	-	5,6	5,15	0,33	0,11	0	0,01	3,38	111	333	474	265	208	230	0	0	P+P	
V20	75-79	M	4	3	yes	252	S, R	H	4	8	4,08	2,45	1,03	0,5	0,09	0,01	5,61	118	177	1093	983	28	-	0	0	A+A	
V21	80-84	M	6	2	yes	319	S, R	H	4	6	6,75	4,77	1,04	0,85	0,09	0,01	4,63	149	194	0	-	103	57,5	0	0	P+P+P	
V22	50-54	M	1	4	yes	271	S, T	H	6	16	5,91	5,15	0,63	0,13	0	0	4,82	147	310	229	888	158	-	0	0	A+A	
V23	75-79	M	2	2	yes	371	S	H	10	3	4,28	2,91	0,82	0,54	0	0,01	4,79	208	213	580	507	34	64,5	0	0	A+P	
V24	85-89	F	8	3	yes	271	S, M	H	6	4	4,13	3,09	0,72	0,29	0,01	0,02	3,64	108	201	739	343	82	44,9	0,7	0	P+P+P	
V25	70-74	M	5	1	no	258	S, M	H	-	8	-	-	-	-	-	-	-	-	-	-	-	-	-	-	0	0	A+A
V26	60-64	M	2	3	yes	202	S	H	9	8	8,99	7,97	0,77	0,24	0	0,01	5	215	286	499	1364	172	-	0	0	J	
V27	75-79	M	6	0	no	-	R, M	H	-	8	9,25	6,23	1,87	1,08	0,02	0,06	5,51	164	233	319	-	74	-	0	0	P+P	
V28	85-89	F	5	3	yes	276	S	D	-	-	5,9	4,74	0,62	0,51	0,02	0,01	3,23	304	117	3977	677	111	-	0	0	P+P	
V29	70-74	F	5	3	yes	276	S	H	2	5	7,51	5,4	1,41	0,51	0,18	0,01	4,13	297	256	1731	527	89	-	0	0	A+A	
V30	80-84	F	4	2	yes	390	-	H	16	3	9,91	6,09	2,79	0,9	0,07	0,05	4,83	492	162	1071	434	21	-	0,2	0	P+P	
V31	60-64	M	2	2	yes	304	S, R, M	H	3	5	5,26	3,41	0,86	0,96	0,01	0,02	5,08	203	201	624	555	11	5,5	3,2	0	P+P	
V32	50-54	M	1	0	no	457	-	H	-	16	14,9	11,25	1,98	1,53	0,1	0,03	3,44	274	168	592	154	7	-	0	0	P+P	
V33	70-74	F	5	3	yes	271	S	H	10	11	4,49	3,48	0,82	0,18	0	0,01	4,09	173	200	177	177	9	21,1	0	0	A+A	
V34	65-69	F	2	1	no	-	-	H	7	1	4,03	0,79	2,43	0,72	0,08	0,01	4,39	147	189	572	209	7	4,5	0	0	P+P	
V35	30-34	M	0	1	no	438	-	H	2	1	6,49	3,41	1,87	1,07	0,11	0,03	5,55	189	202	490	236	10	5,4	0	0	P+P	
V36	70-74	F	3	4	yes	282	S, T	D	12	-	6,59	5,29	1,11	0,18	0	0,01	4,85	-	313	612	277	143	-	0	0	A+A	
Mean	73,2	-	4,3	2,3	-	294,1	-	-	7,0	8,7	7,2	5,0	1,7	0,5	0,0	0,0	4,3	215,3	233,7	895,7	552,9	82,0	73,6	40,3	-	-	
SD	13,3	-	2,2	1,2	-	65,2	-	-	3,5	5,9	3,6	2,5	2,8	0,4	0,1	0,0	0,7	91,6	62,2	697,8	482,6	68,8	86,9	138,1	-	-	

Supplemental Table 1. Demographic, clinical, and laboratory characteristics of vaccinated (n=36) and unvaccinated COVID-19 (n=29) patients at hospital admission.

A: ChAdOx1-S/nCoV-19 vaccine; C: Caucasian; CH: Chinese; D: deceased; H: discharged home; J: Ad26.COVS vaccine; L: Latin american; M: antiviral monoclonal antibodies; N: mRNA-1273 vaccine; na: not applicable; P: BNT162b2 vaccine; R: remdesivir; S: steroids; T: tocilizumab.

p values are calculated by Mann-Whitney U test or χ^2 test, as appropriate.

Antigen	Fluorochrome	Clone	Company
CD45	V-500	2D1	BDBioscience
CD66b	V-450	G10F5	BDBioscience
HLA-DR	V-450	L243	BDBioscience
CD15	FITC	MMAC	BDBioscience
CD14	FITC	MφP9	BDBioscience
CD123	PE	9F5	BDBioscience
CD64	PerCP-5.5	10.1	BDBioscience
CD13	PE-Cy7	L138	BDBioscience
CD33	PE-Cy7	P676	BDBioscience
CD11b	APC	D12	BDBioscience
CD141	APC-H7	1A4	BDBioscience
CD16	APC-H7	3G8	BDBioscience
CD1c	PE	AD5-8E7	Miltenyi

Supplemental Table 2. List of all fluorochrome mAbs used for flow cytometric analysis of neutrophils, monocytes, plasmacytoid and classical dendritic cells.

Antigen	Fluorochrome	Clone	Company
HLA-DR	FITC	L243	BDBioscience
CD56	PE	NCAM16.2	BDBioscience
CD16	PerCP 5.5	3G8	BDBioscience
CD4	PE-Cy7	SK3	BDBioscience
CD19	APC	SJ25C1	BDBioscience
CD8	APC-H7	SK1	BDBioscience
CD3	V450	ICTH1	BDBioscience
CD45	V450-C	2D1	BDBioscience

Supplemental Table 3. List of all fluorochrome mAbs used for flow cytometric analysis of T cell subsets' immunophenotyping.

Antigen	Fluorochrome	Clone	Company
CXCR3	FITC	FAB160F	R&D Systems
CXCR5	PE	FAB190P	R&D Systems
CCR7	V450	150503	BD Horizon
CD45RO	APC	559865	BD Pharmigen
CD3	PerCP	SK7	BDBioScience
CD8	APC-Cy7	SK1	BDBioScience
CCR6	PE-Cy7	130-100-381	Miltenyi
CD4	eFluor 506	RPA-T4	Invitrogen

Supplemental Table 4. List of all fluorochrome mAbs used for flow cytometric analysis of T follicular and memory cells.

Antigen	Fluorochrome	Clone	Company
CD19	APC-Vio770	LT19	Miltenyi
CD27	VioBright FITC	M-T271	Miltenyi
IgA	VioGreen	IS11-8E10	Miltenyi
IgG	VioBlue	IS11-3B2.2.3	Miltenyi
CD14	PerCP	TÜK4	Miltenyi
IgM	APC	PJ2-22H3	Miltenyi
CD3	PerCP	BW264/56	Miltenyi
7AAD			Miltenyi
Spike	PE		Miltenyi
Spike	PE-Vio770		Miltenyi

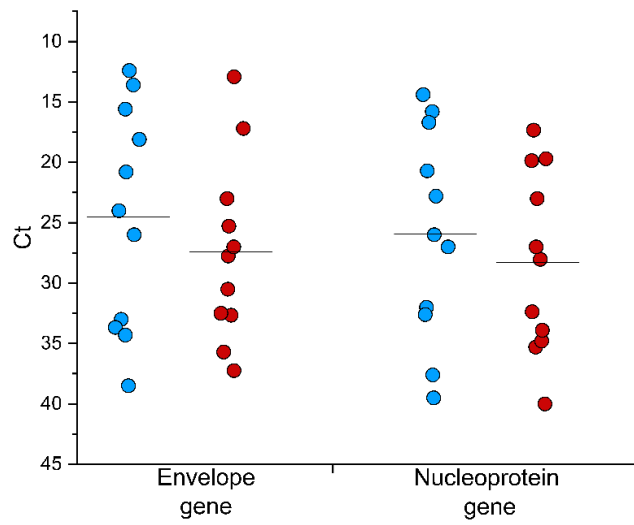
Supplemental Table 5. List of all fluorochrome mAbs used for flow cytometric analysis of antigen specific B cells.

Antigen	Fluorochrome	Clone	Company
CD38	APC-Cy7	HB7	BDBioScience
CD19	APC	SJ25C1	BDBioScience
CD27	VioBright FITC	M-T271	Miltenyi
CD14	PerCP	TÜK4	Miltenyi
CD3	PerCP	BW264/56	Miltenyi
7-AAD	PerCP		Miltenyi
CD20	V 450	L27	BDBioScience
CD45	eFluor V500	2D1	BDBioScience
Spike	PE		
Spike	PECy-7		

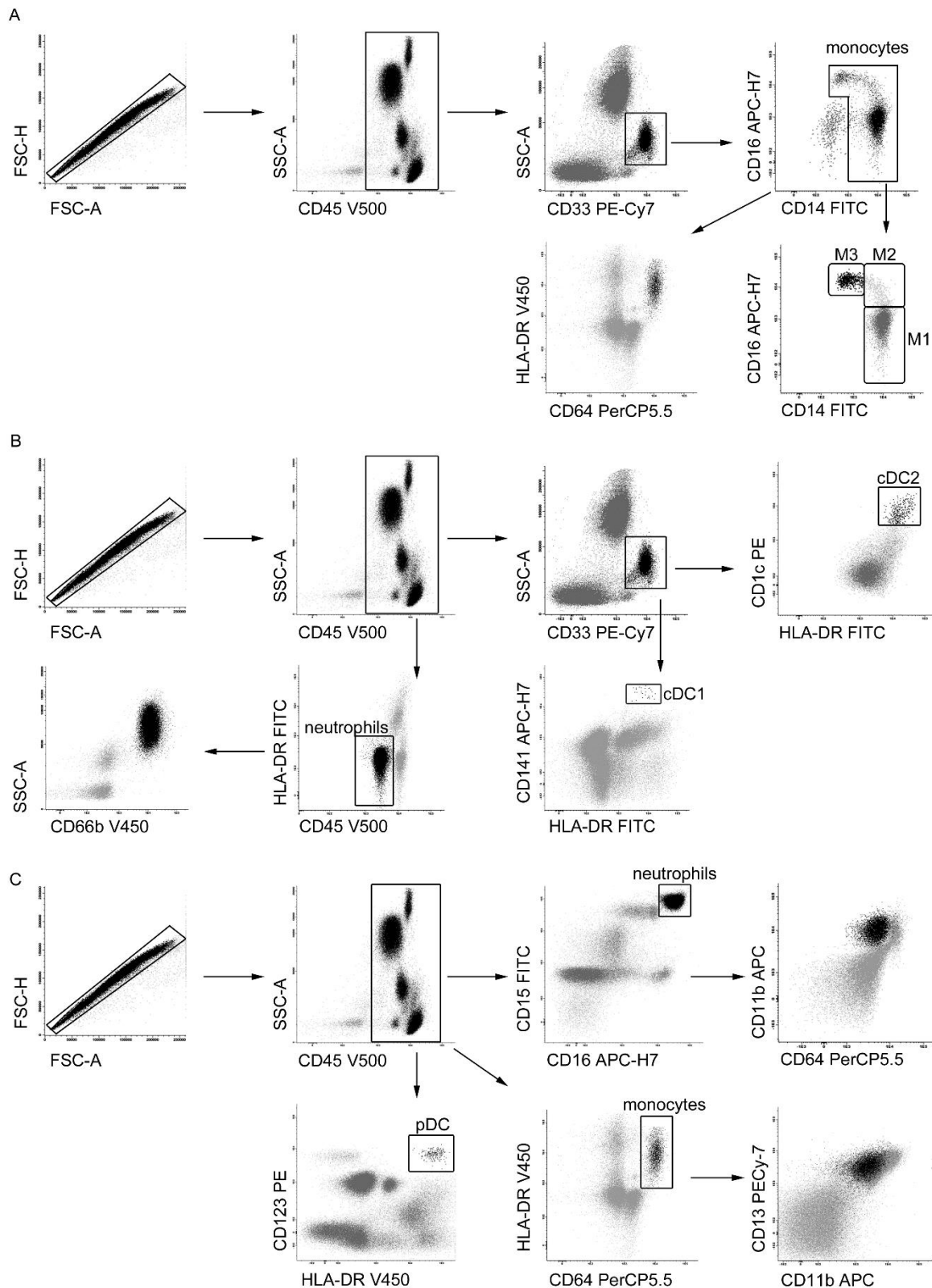
Supplemental Table 6. List of all fluorochrome mAbs used for flow cytometric analysis of antigen specific Plasma blasts.

Antigen	Fluorochrome	Clone	Company
TNF- α	FITC	6401.1111 B	BDBioscience
CD154	PE	TRAP1	BDBioscience
CD3	PerCP	SK7	BDBioscience
CD4	PECy-7	SK3	Invitrogen
CD8	SB600	SK1	eBioscience™
IL-2	APC	MQ1-17H12	BDBioscience
IFN- γ	Pacific Blue	B27	BioLegend
L/D	Fixable Viability Stain 780		BDBioscience

Supplemental Table 7. List of all fluorochrome mAbs used for flow cytometric analysis of antigen specific and polyclonal T cells.



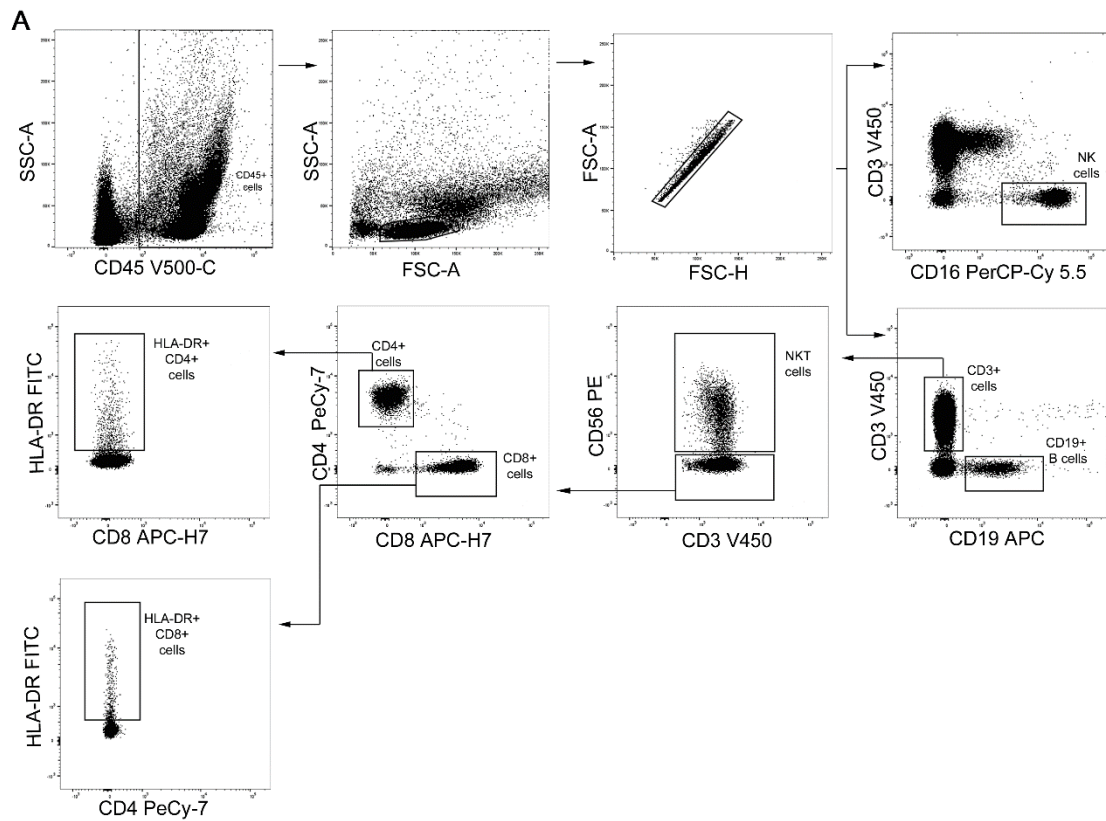
Supplemental Figure 1. Viral loads of recruited patients. SARS-CoV2 infection of recruited subjects was confirmed by routine diagnostic PCR amplification of Envelope and Nucleoprotein viral genes from nasopharyngeal swabs. Cycle thresholds (Ct) are shown in blue dots for 11 vaccinated patients and red dots for 11 unvaccinated patients.



Supplemental Figure 2. Gating strategy for myeloid cells identification.

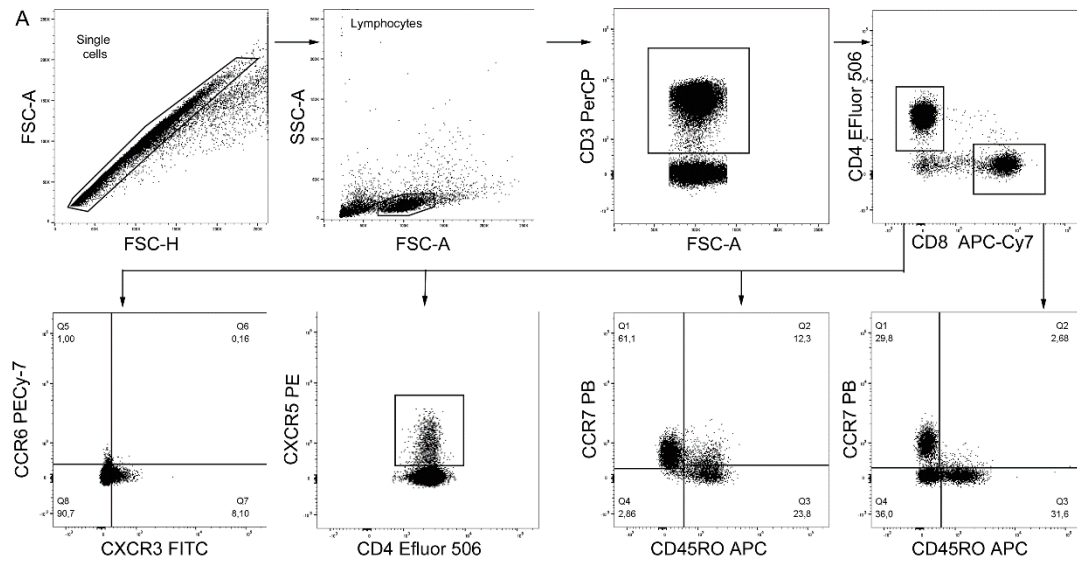
Whole blood cells were gated using physical parameters (FSC, SSC) and CD45 surface marker. **(A)** Monocytes were isolated from CD33⁺ cells as CD14⁺CD16⁺ cells. Then, they were gated basing on the expression of activation markers CD64 and HLA-DR and, in parallel, identified as CD14⁺⁺(M1), CD14⁺CD16⁺ (M2) and CD16⁺⁺ (M3). **(B)** Dendritic cells were identified through physical parameter

SSC and expression of CD33, then gated into CD1c+ (cDC2) and CD141+ (cDC1). Neutrophils were identified as HLA-DR negative-CD45 dim, and then analyzed for CD66b expression. (C) Plasmacytoid Dendritic cells were isolated from CD45+ cells as CD123+ HLA-DR+ cells. Neutrophils were gated from CD45+ cells into CD15++ CD16++ cells and marked by expression of activation markers CD11b, CD64. Monocytes were identified as HLA-DR+ CD64+ and then characterized for CD13 and CD11b expression.



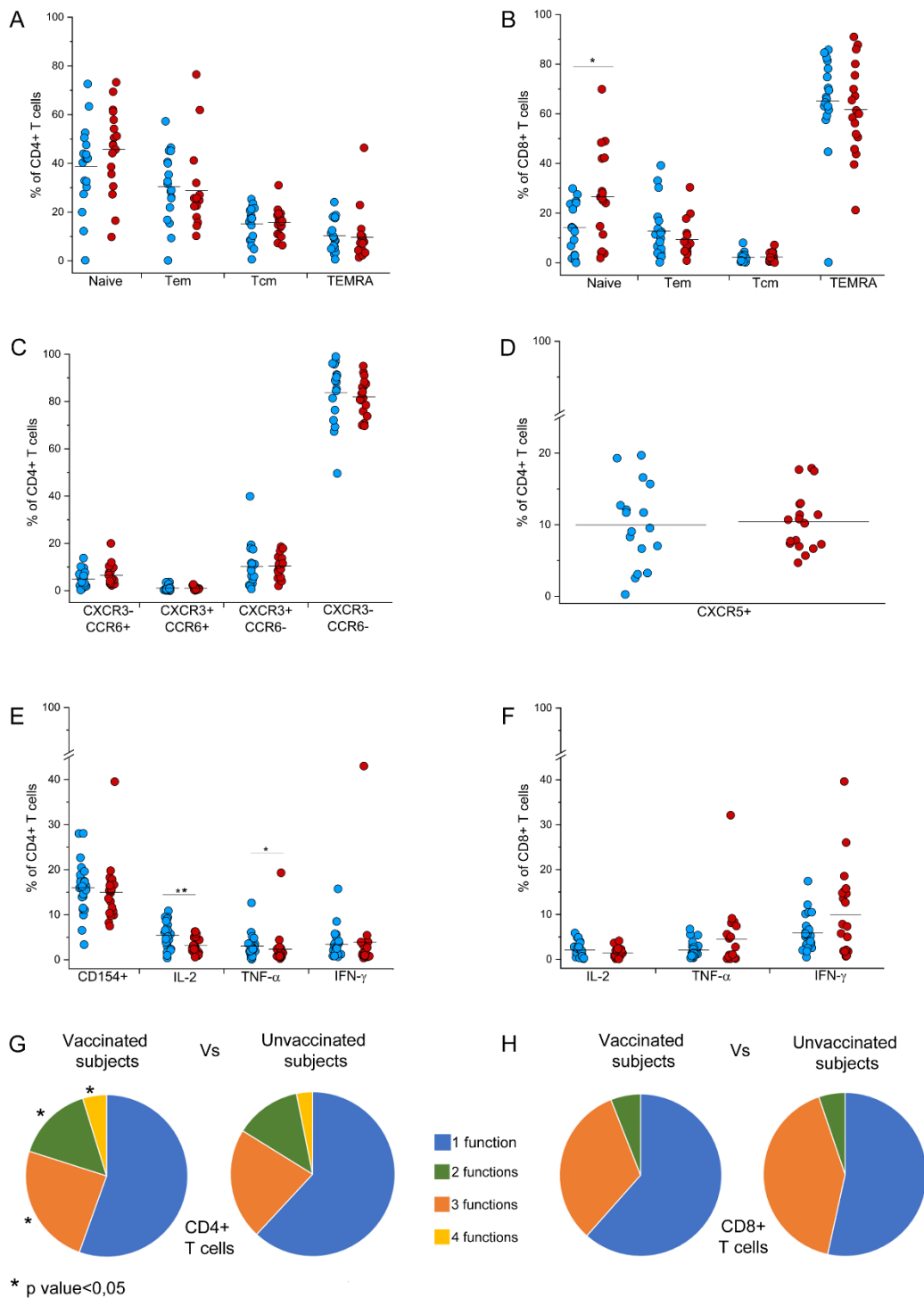
Supplemental Figure 3. Gating strategy for lymphoid cell subsets immunophenotyping.

(A) PBMCs were gated based on physical parameter SSC and CD45 surface expression, lymphocytes were then gated basing on physical parameters (SSC, FSC). Doublets were removed using FSC-A and FSC-A parameters. NK cells were isolated by CD16 expression. B cells were identified as CD19+ and T cells as CD3+. Within these, CD3+CD56+ cells were identified as NKT. We then identified CD4+ and CD8+ T cells. Among these, we identified HLA-DR expressing cells.



Supplemental Figure 4. Gating strategy for the identification of naive and memory T cell subsets, and T follicular helper subset.

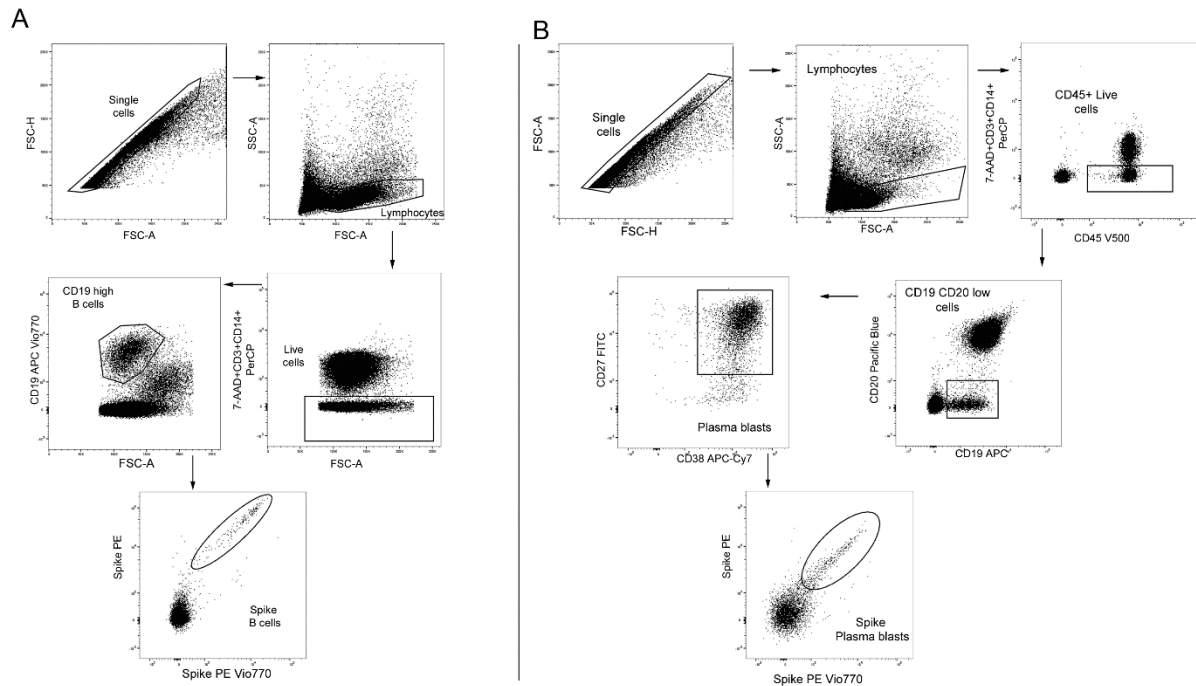
(A) Doublets were removed using FSC-A and FSC-A parameters and lymphocytes were gated based on physical parameters (FSC-SSC). T cells were identified as CD3+. We then identified CD4+ and CD8+ T cells. Among these, we identified naive (CD45RO-CCR7+), effector memory (CD45RO+CCR7-), central memory (CD45RO+CCR7+), TEMRA (CD45RO-CCR7-). Among CD4+ T cells, we identified CXCR3+CCR6-, CXCR3+CCR6+, CXCR3+CCR6-, CXCR3-CCR6- and CXCR5+ T follicular helper cells.



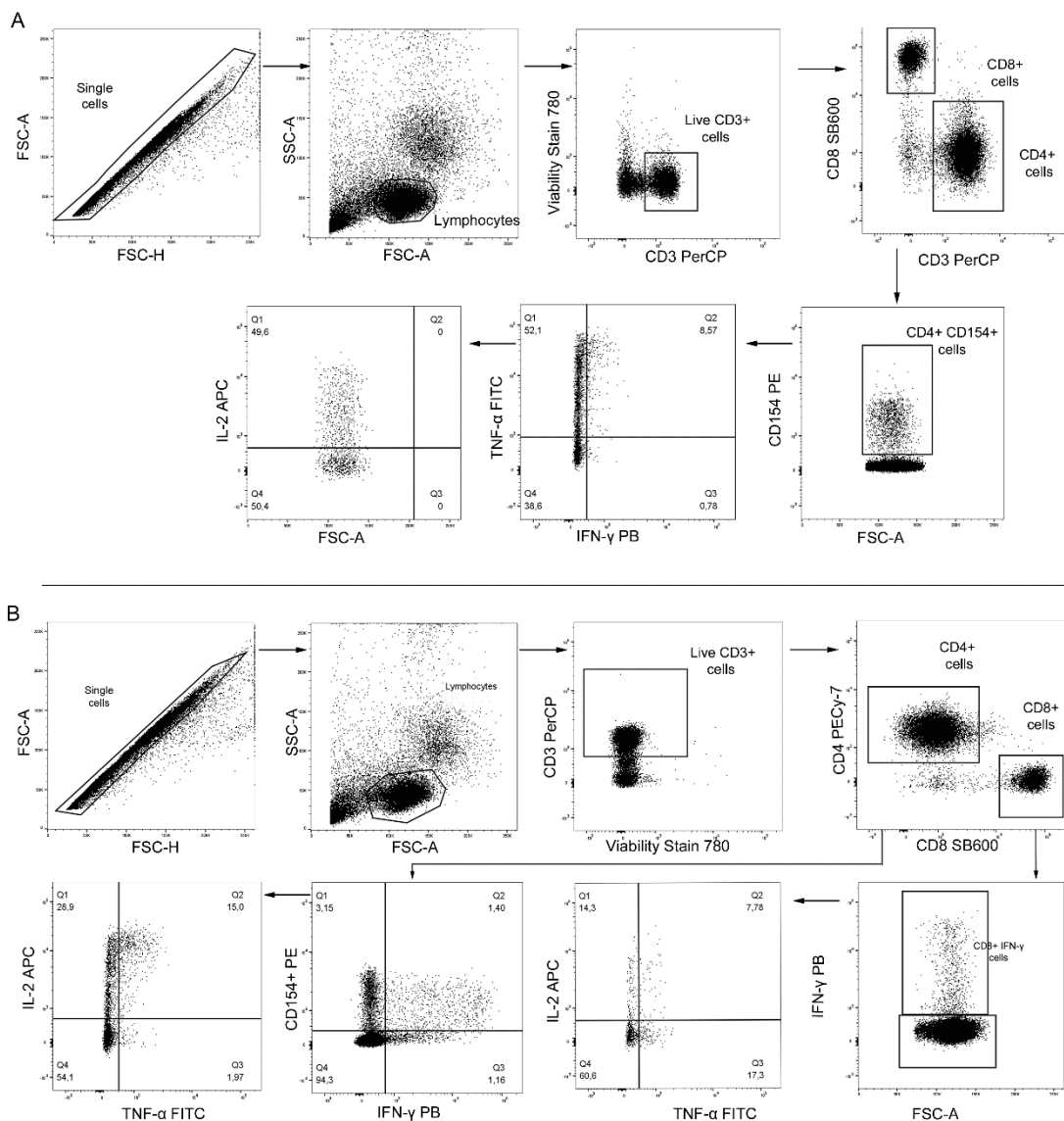
Supplemental Figure 5. Identification of CD4+ and CD8+ naive and memory T cell subsets, and T follicular helper subset.

(A) Frequency of naive (CD45RO-CCR7+), effector memory (CD45RO+CCR7-), central memory (CD45RO+CCR7+), TEMRA (CD45RO-CCR7-) among CD4+ T cells in 17 vaccinated (blue dots) and 18 unvaccinated (red dots) COVID-19 patients. (B) Frequency of naive (CD45RO-CCR7+),

effector memory (CD45RO+CCR7-), central memory (CD45RO+CCR7+), TEMRA (CD45RO-CCR7-) among CD8+ T cells in vaccinated (blue dots) and unvaccinated (red dots) COVID-19 patients requiring hospitalization. **(C)** Frequency of CXCR3+CCR6-, CXCR3+CCR6+, CXCR3+CCR6-, CXCR3-CCR6- among CD4+ T cells in vaccinated (blue dots) and unvaccinated (red dots) COVID-19 patients requiring hospitalization. **(D)** Frequency of CXCR5+ T follicular helper cells among CD4+ T cells in vaccinated (blue dots) and unvaccinated (red dots) COVID-19 patients. **(E)** Frequency of CD154+, IL-2, TNF- α and IFN- γ producing cells among CD4+ T cells in vaccinated (blue dots) and unvaccinated (red dots) COVID-19 patients requiring hospitalization. **(F)** Frequency of IL-2, TNF- α and IFN- γ producing cells among CD8+ T cells in vaccinated (blue dots) and unvaccinated (red dots) COVID-19 patients requiring hospitalization. **(G)** Characterization CD4+ T cell polyfunctionality in vaccinated and unvaccinated COVID-19 patients. Results are shown as mean percentages from 26 vaccinated and 22 unvaccinated COVID-19 patients requiring hospitalization. **(H)** Characterization CD8+ T cell polyfunctionality in vaccinated and unvaccinated COVID-19 patients. Results are shown as mean percentages from 26 vaccinated and 22 unvaccinated COVID-19 patients requiring hospitalization. *P<0,05 **P>0,005 ***P<0,0005 calculated with Mann-Whitney U test.



Supplemental Figure 6. Gating strategy for the identification of Spike specific B cells (A) and Plasma blasts (B). (A) Doublets were removed using FSC-A and FSC-A parameters and lymphocytes were gated based on physical parameters (FSC-SSC). PerCP was used as dump channel for the exclusion of dead cells (7AAD), CD3+ T cells and CD14 monocytes. B cells were identified as CD19+ high. B cells binding PE- and PE Vio770-conjugated spike protein were then identified as spike-specific. (B) Doublets were removed using FSC-A and FSC-A parameters and lymphocytes were gated based on physical parameters (FSC-SSC). PerCP was used as dump channel for the exclusion of dead cells (7AAD), CD3+ T cells and CD14 monocytes. Plasma blasts were first identified as CD19+ low, then further gated into CD27+CD38+ cells. Plasma blasts binding PE- and PE Vio770-conjugated spike protein were then identified as spike-specific.



Supplemental Figure 7. Gating strategy for the identification of polyclonal (A) and SARS-CoV2 specific (B) T cells. (A) Doublets were removed using FSC-A and FSC-A parameters and lymphocytes were gated based on physical parameters (FSC-SSC). Dead cells were excluded using viability stain 780. T cells were identified as CD3+. We then identified CD4+ T cells. Among these, we identified CD154 expressing cells. CD4+CD154+ T cells were then evaluated for IFN- γ , TNF- α and IL-2 expression. (B) Doublets were removed using FSC-A and FSC-A parameters and lymphocytes were gated based on physical parameters (FSC-SSC). Dead cells were excluded using viability stain 780. T cells were identified as CD3+. We then identified CD4+ and CD8+ T cells. CD4+ T cells were evaluated for CD154, IFN- γ , TNF- α and IL-2 expression. CD8+ T cells were evaluated for IFN- γ , TNF- α and IL-2 expression.