

SUPPLEMENTARY MATERIALS

Section 1. Explanation on the IPUMS-DHS Variables

Seven *a priori* identified correlates of hemoglobin levels:

1. Age: the participant's age at the time of the survey.
2. Body Mass Index: a 4-digit numeric variable with two implied decimal places representing a BMI for male household members.
3. Wealth Index: the relative wealth of the participant's household, divided into quintiles from the poorest (1) to the richest (5).
4. Religion: the participant's religion. IPUMS-DHS uses a 4-digit composite coding system to fit these diverse categories into a single variable without losing information. [No religion (0); Muslim (1000); Christian (2000); Buddhist/neo-Buddhist (3000); Hindu (4000); Jewish (5000); Traditional/spiritual/animist (6000); Other (specified) (7000); Other (9000)]
5. Education Level: the highest level of school the respondent attended. This is a standardized variable reporting level of education in four categories: No education (0), Primary (1), Secondary (2), Higher (3).
6. Marital Status: the participant's marital status at the time of the survey. [Never Married (00); Married or living together (10); Formerly in union (20)]
7. Degree of Cluster Rurality: the proportion of agricultural male workers out of all male workers in the DHS cluster where the participant lived in. We created this variable ourselves.

Outcome:

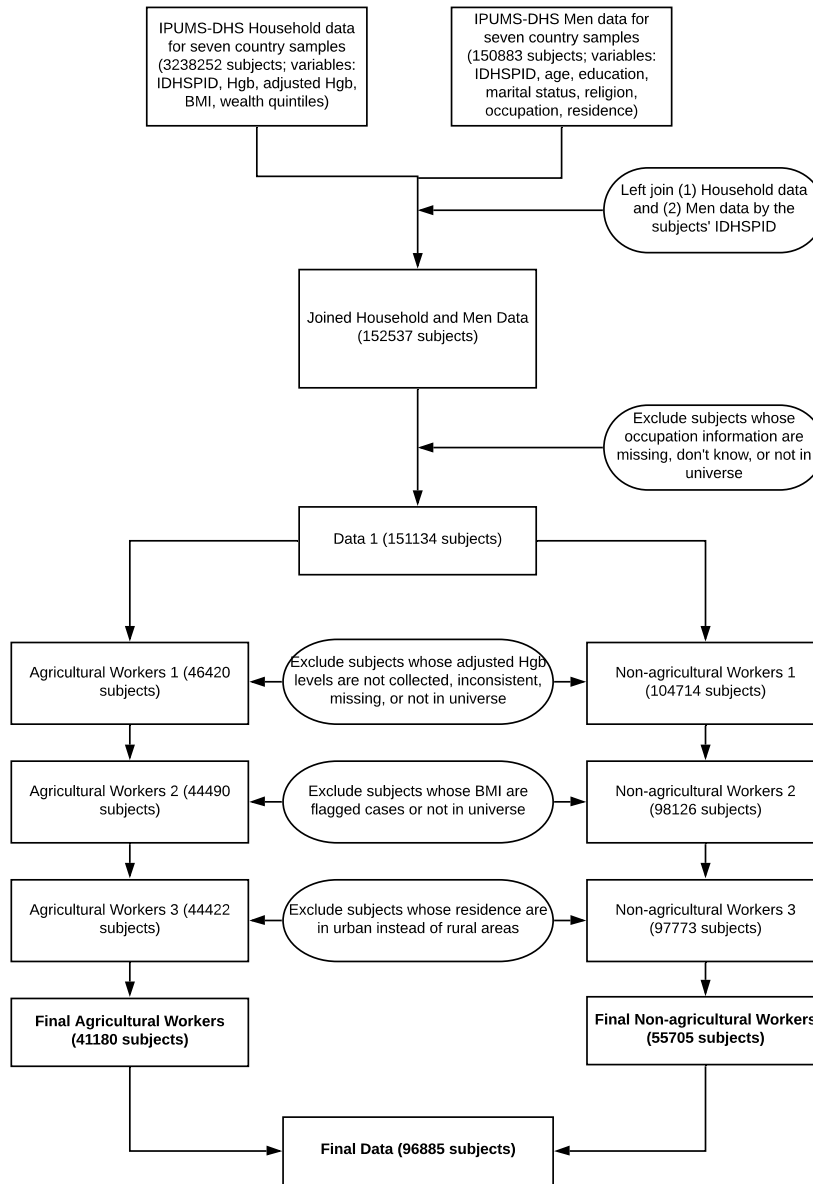
1. Hemoglobin Level Adjusted by Altitude: For adult men household members, HWMHEMOLEVELALT (HB56) reports the level of hemoglobin in the blood, in terms of grams per deciliter (g/dl), based on testing of blood drawn by DHS personnel, and adjusted for altitude. Hemoglobin levels are tested to determine the presence and severity of anemia. HWMHEMOLEVELALT is a 3-digit variable with 1 implied decimal place.

The adjustment followed the formulas: (1) $adjust = -0.032 \times alt + 0.022 \times alt^2$ (2) $adjusted\ Hgb = Hgb - adjust$, if $adjust > 0$. $adjust$ is the amount of the adjustment, alt is altitude in 1,000 feet, and Hgb is the measured Hgb in grams per deciliter.

Exposure of Interest:

1. Participant's Occupation: the occupation of the male respondent in somewhat standardized categories. The categories included, and the degree of detail within broad categories (e.g., self-employed versus employee in agriculture, or simply agriculture), vary across samples. IPUMS-DHS employs composite coding to maximize comparability across samples (using the first digit of the codes to indicate broad job categories) without loss of detailed information (preserved in the second digit). The category "agriculture" includes fishermen, foresters, breeders, and hunters as well as farmers.

Section 2. Flow Diagram for Data Pre-processing Steps



Section 3. Wealth Index and Education Level by Male Workers' Occupations, Treated, and Multiple Controls

Male Workers' Occupation	Size	Wealth Index n (%) 1 st Quintile - 1 2 nd Quintile - 2 3 rd Quintile - 3 4 th Quintile - 4 5 th Quintile - 5	Education Level n (%) no education - 0 primary education - 1 secondary education - 2 higher education - 3
Not Currently Working	19107	3806 (19.9) 4780 (25.0) 4829 (25.3) 3590 (18.8) 2102 (11.0)	1285 (6.7) 2159 (11.3) 12738 (66.7) 2925 (15.3)
Professional, Technical, or Managerial	3841	269 (7.0) 467 (12.2) 834 (21.7) 1164 (30.3) 1107 (28.8)	85 (2.2) 179 (4.7) 1338 (34.8) 2239 (58.3)
Clerical	1092	68 (6.2) 175 (16.0) 299 (27.4) 302 (27.7) 248 (22.7)	30 (2.7) 79 (7.2) 648 (59.3) 335 (30.7)
Sales	5389	734 (13.6) 1124 (20.9) 1387 (25.7) 1274 (23.6) 870 (16.1)	684 (12.7) 941 (17.5) 3101 (57.5) 663 (12.3)
Agricultural	37664	10844 (28.8) 10793 (28.7) 8408 (22.3) 5229 (13.9) 2390 (6.3)	9329 (24.8) 9794 (26.0) 16627 (44.1) 1914 (5.1)
Agricultural, Self Employed	2891	1076 (37.2) 878 (30.4) 564 (19.5) 270 (9.3) 103 (3.6)	953 (33.0) 972 (33.6) 943 (32.6) 23 (0.8)
Agricultural, Employee	625	105 (16.8) 209 (33.4) 204 (32.6) 99 (15.8) 8 (1.3)	92 (14.7) 321 (51.4) 208 (33.3) 4 (0.6)
Household, Domestic, and Services	4189	633 (15.1) 939 (22.4) 1137 (27.1) 945 (22.6) 535 (12.8)	441 (10.5) 571 (13.6) 2542 (60.7) 635 (15.2)
Household and Domestic	200	39 (19.5) 52 (26.0) 58 (29.0) 37 (18.5) 14 (7.0)	11 (5.5) 92 (46.0) 95 (47.5) 2 (1.0)

Services	1210	282 (23.3) 322 (26.6) 328 (27.1) 218 (18.0) 60 (5.0)	136 (11.2) 566 (46.8) 486 (40.2) 22 (1.8)
Skilled and Unskilled Manual	16798	4488 (26.7) 4736 (28.2) 3999 (23.8) 2463 (14.7) 1112 (6.6)	3110 (18.5) 3150 (18.8) 9854 (58.7) 684 (4.1)
Skilled Manual	2596	559 (21.5) 635 (24.5) 681 (26.2) 485 (18.7) 236 (9.1)	327 (12.6) 1138 (43.8) 1021 (39.3) 110 (4.2)
Unskilled Manual	722	183 (25.3) 176 (24.4) 192 (26.6) 138 (19.1) 33 (4.6)	179 (24.8) 326 (45.2) 205 (28.4) 12 (1.7)
Other	561	184 (32.8) 113 (20.1) 131 (23.4) 100 (17.8) 33 (5.9)	114 (20.3) 268 (47.8) 152 (27.1) 27 (4.8)

Agricultural workers and Multiple Controls	Size	Wealth Index n (%) 1st Quintile - 1 2nd Quintile - 2 3rd Quintile - 3 4th Quintile - 4 5th Quintile - 5	Education Level n (%) no education - 0 primary education - 1 secondary education - 2 higher education - 3
Agricultural Workers	41180	12025 (29.2) 11880 (28.8) 9176 (22.3) 5598 (13.6) 2501 (6.1)	10374 (25.2) 11087 (26.9) 17778 (43.2) 1941 (4.7)
All Controls	55705	11245 (20.2) 13519 (24.3) 13875 (24.9) 10716 (19.2) 6350 (11.4)	6402 (11.5) 9469 (17.0) 32180 (57.8) 7654 (13.7)
Better-off Controls	10322	1071 (10.4) 1766 (17.1) 2520 (24.4) 2740 (26.5) 2225 (21.6)	799 (7.7) 1199 (11.6) 5087 (49.3) 3237 (31.4)
Worse-off Controls	45383	10174 (22.4) 11753 (25.9) 11355 (25.0) 7976 (17.6) 4125 (9.1)	5603 (12.3) 8270 (18.2) 27093 (59.7) 4417 (9.7)

Section 4. Comparison of mean baseline correlates for (1) agricultural male workers vs all controls by DHS samples, (2) agricultural male workers vs alternative controls, and (3) better-off control vs. worse-off control, before and after matching

Whole DHS Sample						
	Agricultural Male Workers		All Controls		Standardized Difference	
Covariates	Mean Before Matching	Mean After Matching	Mean Before Matching	Mean After Matching	Std Before Matching	Std After Matching
Age	34.32	32.36	29.20	32.46	0.47	-0.01
Body Mass Index	20.99	21.25	21.20	21.28	-0.06	-0.01
Wealth Index	2.38	2.56	2.77	2.56	-0.31	0.00
Education Level	1.27	1.52	1.74	1.52	-0.54	0.00
Currently Married or Not	0.74	0.67	0.53	0.67	0.45	-0.01
Christian or Not	0.23	0.20	0.18	0.20	0.13	0.00
Muslim or Not	0.15	0.15	0.15	0.15	-0.01	0.00
Hindu or Not	0.56	0.59	0.60	0.59	-0.08	0.00
No Religion or Not	0.01	0.02	0.02	0.02	-0.06	-0.01
Degree of Cluster Rurality	0.62	0.46	0.28	0.46	1.43	0.01

Ethiopia 2016						
Age	32.87	28.84	26.76	28.63	0.55	0.02
Body Mass Index	19.27	19.12	18.93	19.14	0.14	-0.01
Wealth Index	2.51	2.62	2.60	2.63	-0.07	-0.01
Education Level	0.69	0.97	1.16	1.01	-0.06	-0.05
Currently Married or Not	0.70	0.51	0.45	0.52	0.53	0.00
Christian or Not	0.60	0.60	0.54	0.60	0.12	0.01
Muslim or Not	0.39	0.38	0.48	0.38	-0.12	0.01
Degree of Cluster Rurality	0.79	0.68	0.52	0.65	1.23	0.12

India 2015						
Age	35.28	33.14	29.31	33.16	0.56	0.00
Body Mass Index	21.40	21.52	21.37	21.54	0.01	-0.01
Wealth Index	2.39	2.58	2.82	2.58	-0.34	0.00
Education Level	1.42	1.62	1.82	1.62	-0.47	0.00
Currently Married or Not	0.79	0.71	0.55	0.71	0.53	-0.01
Christian or Not	0.08	0.07	0.06	0.06	0.10	0.00
Muslim or Not	0.08	0.11	0.14	0.11	-0.17	0.00
Hindu or Not	0.78	0.77	0.75	0.77	0.06	0.00
Degree of Cluster Rurality	0.58	0.45	0.28	0.45	1.34	0.01

Lesotho 2014						
Age	28.96	32.66	34.41	32.40	-0.47	0.02
Body Mass Index	20.85	21.36	22.15	21.49	-0.41	-0.04
Wealth Index	2.45	2.59	2.84	2.61	-0.31	-0.01
Education Level	1.07	1.17	1.32	1.18	-0.36	-0.03
Currently Married or Not	0.34	0.50	0.61	0.48	-0.57	0.05
Christian or Not	0.89	0.90	0.92	0.90	-0.10	0.02
Degree of Cluster Rurality	0.67	0.53	0.36	0.49	1.32	0.17

Namibia 2013						
Age	36.87	35.81	30.67	36.31	0.48	-0.04

Body Mass Index	21.63	21.39	20.46	21.60	0.31	-0.06
Wealth Index	2.65	2.55	2.35	2.56	0.26	-0.02
Education Level	1.09	1.15	1.41	1.13	-0.41	0.02
Currently Married or Not	0.53	0.47	0.31	0.49	0.47	-0.06
Christian or Not	0.80	0.81	0.86	0.78	-0.18	0.06
Degree of Cluster Rurality	0.57	0.43	0.09	0.39	2.20	0.19

Senegal 2010						
Age	31.24	31.53	30.12	31.55	0.09	0.00
Body Mass Index	20.07	20.53	20.54	20.47	-0.14	0.02
Wealth Index	1.75	2.00	2.39	2.00	-0.63	0.01
Education Level	0.54	0.62	0.74	0.61	-0.25	0.01
Currently Married or Not	0.54	0.54	0.48	0.54	0.12	-0.01
Christian or Not	0.47	0.04	0.03	0.03	0.09	0.03
Muslim or Not	0.94	0.96	0.97	0.97	-0.13	-0.03
Degree of Cluster Rurality	0.70	0.53	0.33	0.50	1.54	0.15

Uganda 2016						
Age	30.73	28.99	28.17	29.15	0.23	-0.01
Body Mass Index	20.60	20.84	21.17	20.90	-0.21	-0.02
Wealth Index	2.34	2.70	3.08	2.73	-0.60	-0.02
Education Level	1.24	1.35	1.46	1.38	-0.32	-0.04
Currently Married or Not	0.63	0.56	0.53	0.56	0.20	0.00
Christian or Not	0.90	0.88	0.86	0.88	0.13	0.00
Degree of Cluster Rurality	0.70	0.55	0.34	0.52	1.49	0.14

Zimbabwe 2015						
Age	29.52	29.01	28.03	29.05	0.14	0.00
Body Mass Index	20.90	20.90	21.04	20.90	-0.05	0.00
Wealth Index	2.40	2.38	2.50	2.41	-0.09	-0.03
Education Level	1.57	1.60	1.73	1.63	-0.28	-0.05
Currently Married or Not	0.55	0.53	0.49	0.52	0.13	0.01
Christian or Not	0.69	0.70	0.74	0.69	-0.11	0.00
No Religion or Not	0.25	0.25	0.22	0.25	0.06	0.00
Degree of Cluster Rurality	0.41	0.34	0.21	0.32	1.08	0.10

Whole DHS Sample						
	Agricultural Male Workers		Better-off Controls		Standardized Difference	
Covariates	Mean Before Matching	Mean After Matching	Mean Before Matching	Mean After Matching	Std Before Matching	Std After Matching
Age	34.32	33.77	33.74	33.84	0.06	-0.01
Body Mass Index	20.99	22.11	22.61	22.01	-0.45	0.03
Wealth Index	2.38	2.96	3.32	2.95	-0.75	0.01
Education Level	1.27	1.79	2.04	1.77	-0.88	0.02
Currently Married or Not	0.74	0.72	0.72	0.73	0.05	-0.03
Christian or Not	0.23	0.18	0.18	0.18	0.13	0.00
Muslim or Not	0.15	0.18	0.19	0.18	-0.11	0.00
Hindu or Not	0.56	0.58	0.58	0.58	-0.03	0.00
No Religion or Not	0.01	0.01	0.01	0.01	0.02	0.01
Degree of Cluster Rurality	0.29	0.41	0.29	0.41	1.38	0.03

Whole DHS Sample						
	Agricultural Male Workers		Worse-off Controls		Standardized Difference	
Age	34.32	31.81	28.16	31.89	0.56	-0.01
Body Mass Index	20.99	21.11	20.88	21.14	0.03	-0.01
Wealth Index	2.38	2.50	2.65	2.50	-0.22	0.00
Education Level	1.27	1.49	1.67	1.49	-0.46	0.00
Currently Married or Not	0.74	0.64	0.49	0.65	0.54	-0.01
Christian or Not	0.23	0.19	0.18	0.20	0.13	0.00
Muslim or Not	0.15	0.14	0.14	0.14	0.01	0.00
Hindu or Not	0.56	0.60	0.61	0.59	-0.10	0.00
No Religion or Not	0.01	0.02	0.02	0.02	-0.07	0.00
Degree of Cluster Rurality	0.62	0.45	0.28	0.45	1.44	0.01

Whole DHS Sample						
	Worse-off Controls		Better-off Controls		Standardized Difference	
Age	28.16	32.54	33.74	32.56	-0.54	0.00
Body Mass Index	20.88	22.23	22.61	22.18	-0.47	0.02
Wealth Index	2.65	3.09	3.18	3.09	-0.53	0.00
Education Level	1.67	1.86	2.04	1.87	-0.45	-0.01
Currently Married or Not	0.49	0.66	0.72	0.66	-0.49	0.00
Christian or Not	0.18	0.18	0.18	0.18	-0.01	0.00
Muslim or Not	0.14	0.18	0.19	0.19	-0.12	-0.01
Hindu or Not	0.61	0.58	0.58	0.58	0.07	0.00
No Religion or Not	0.02	0.01	0.01	0.01	0.09	0.02
Degree of Cluster Rurality	0.28	0.29	0.29	0.29	-0.05	0.01

Section 5. One-Parameter Sensitivity analysis

Part I. Result of one-parameter sensitivity analysis for the whole sample and each DHS sample with maximum p-value < 0.05 when $\Gamma = 1$ (agricultural workers vs. all controls)

Whole DHS Sample

Γ	P-value lower bound for one-sided test	P-value upper bound for one-sided test
1.00	< 10^{-8}	< 10^{-8}
1.06	< 10^{-12}	0.008
1.07	< 10^{-12}	0.029
1.08	< 10^{-12}	0.085

Ethiopia 2016

Γ	P-value lower bound for one-sided test	P-value upper bound for one-sided test
1.00	0.008	0.008
1.04	0.001	0.035
1.05	0.001	0.047
1.06	< 10^{-4}	0.063

India 2015

Γ	P-value lower bound for one-sided test	P-value upper bound for one-sided test
1.00	< 10^{-4}	< 10^{-4}
1.03	< 10^{-7}	0.006
1.04	< 10^{-8}	0.021
1.05	< 10^{-10}	0.058

Lesotho 2014

Γ	P-value lower bound for one-sided test	P-value upper bound for one-sided test
1.00	0.012	0.012
1.08	0.003	0.041
1.09	0.002	0.047
1.10	0.002	0.053

Senegal 2010

Γ	P-value lower bound for one-sided test	P-value upper bound for one-sided test
1.00	0.029	0.029
1.01	0.023	0.036
1.02	0.018	0.044
1.03	0.014	0.053

Part II. Result of sensitivity analysis for agricultural male workers vs all controls, agricultural male workers vs better-off controls, agricultural male workers vs worse-off controls, and worse-off control vs. better-off control for the whole sample.

Agricultural Workers vs. All Controls

Γ	P-value lower bound for one-sided test	P-value upper bound for one-sided test
1.00	< 10^{-8}	< 10^{-8}
1.06	< 10^{-12}	0.008
1.07	< 10^{-12}	0.029
1.08	< 10^{-12}	0.085

Agricultural Workers vs. Better-off Controls

Γ	P-value lower bound for one-sided test	P-value upper bound for one-sided test
1.00	$< 10^{-10}$	$< 10^{-10}$
1.14	$< 10^{-12}$	0.017
1.15	$< 10^{-12}$	0.034
1.16	$< 10^{-12}$	0.062

Agricultural Workers vs. Worse-off Controls

Γ	P-value lower bound for one-sided test	P-value upper bound for one-sided test
1.00	$< 10^{-7}$	$< 10^{-7}$
1.06	$< 10^{-12}$	0.011
1.07	$< 10^{-12}$	0.037
1.08	$< 10^{-12}$	0.098

Worse-off Controls vs. Better-off Controls

Γ	P-value lower bound for one-sided test	P-value upper bound for one-sided test
1.00	$< 10^{-3}$	$< 10^{-3}$
1.04	$< 10^{-6}$	0.020
1.05	$< 10^{-7}$	0.045
1.06	$< 10^{-8}$	0.090