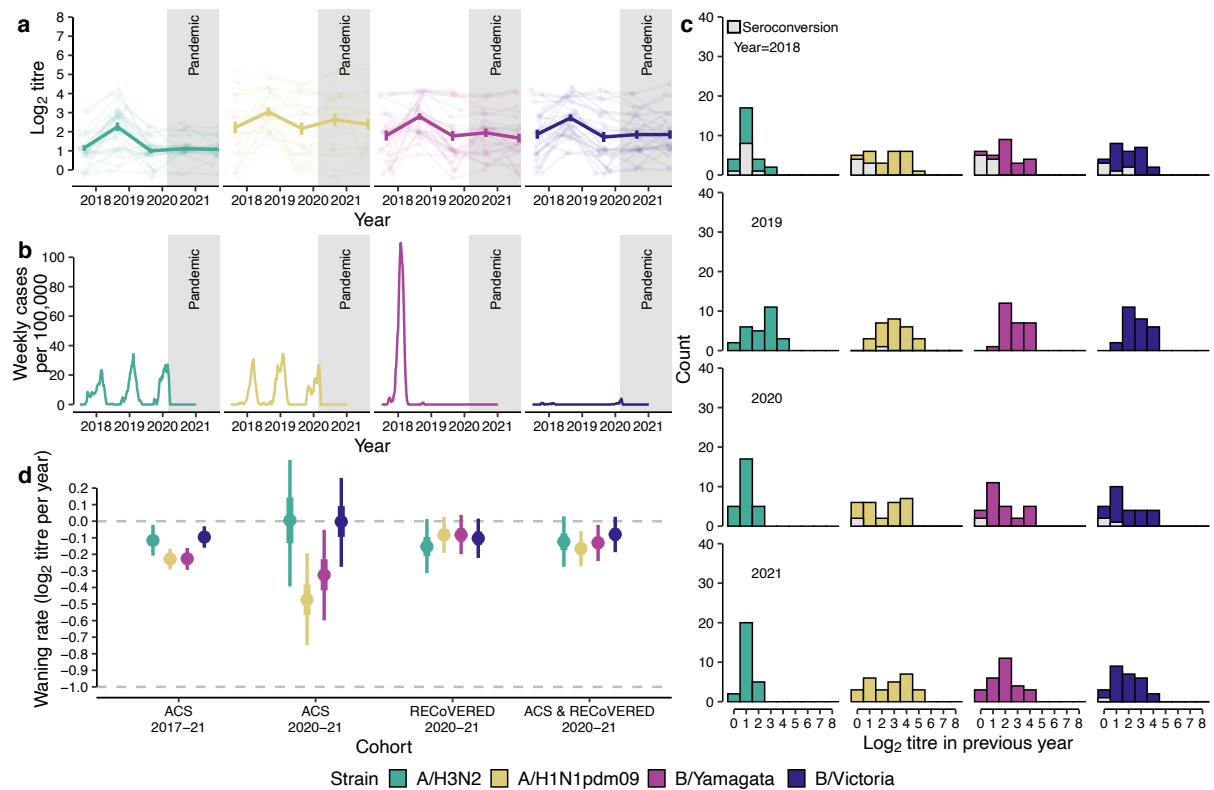
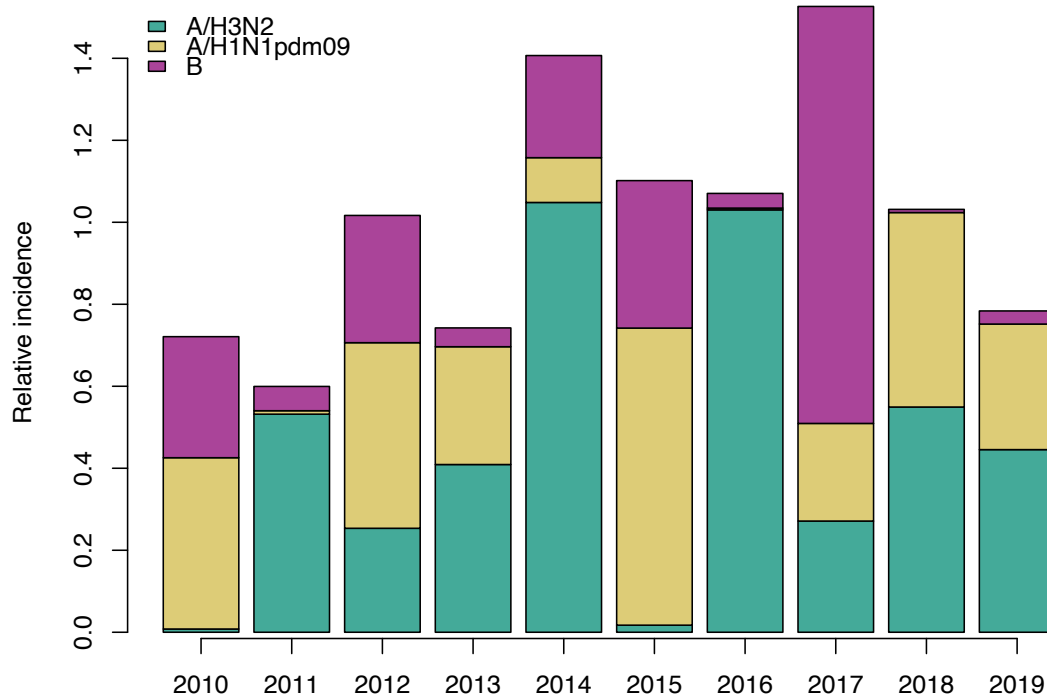


Extended Data Fig. 1. Individual HI titre dynamics for two independent cohorts.
a, Each panel depicts \log_2 individual HI titres from 2017-2021 for all participants in the Amsterdam Cohort Studies on HIV infection and AIDS (ACS). Strains are differentiated by colour and, where applicable, replicate measurements are indicated with dashed lines. **b**,

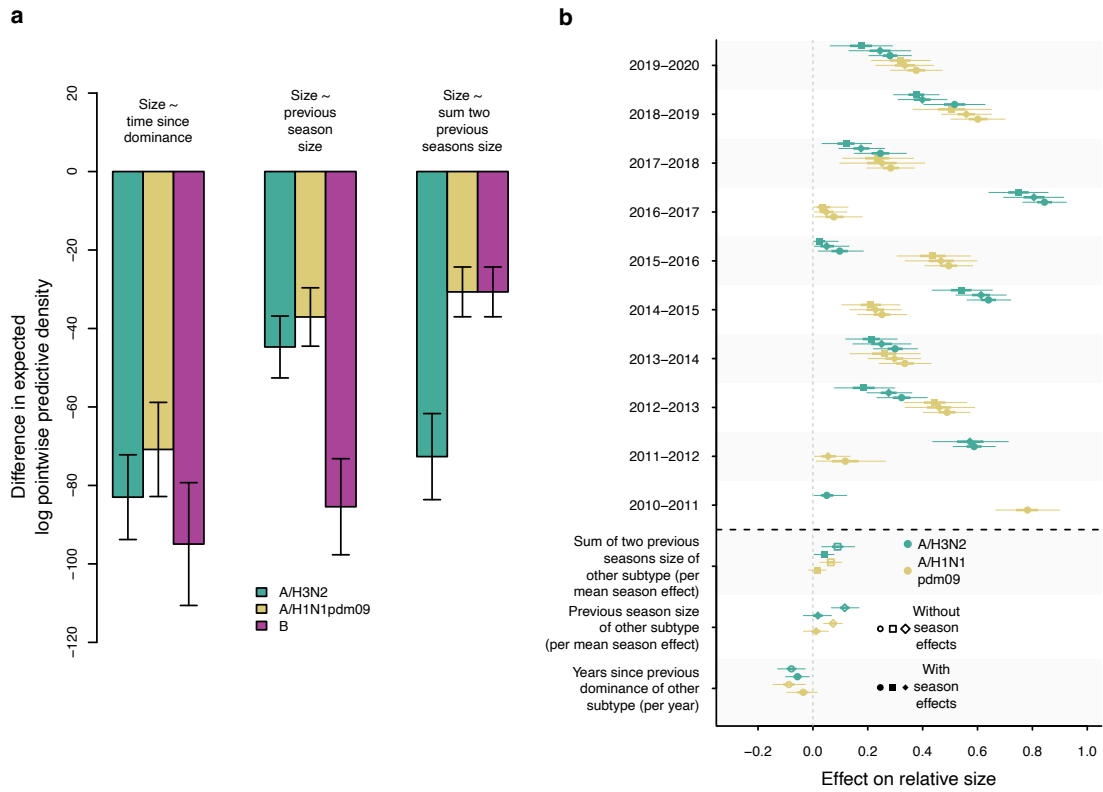
Subtype-specific titre patterns, averaged over two replicates, for all individuals within the RECoVERED cohort. Slight random jitter has been added to both panels in the x and y dimensions to avoid obscuring of repeated data points.



Extended Data Fig. 2. Waning antibody titres to seasonal influenza virus before and during the COVID-19 pandemic for a subset of the Amsterdam Cohort Studies on HIV infection and AIDS (ACS). The information content of this figure corresponds to that contained in Fig. 1, but for individuals 1-30 of the ACS cohort (see Methods). **a**, Individual antibody titres against seasonal influenza viruses based on haemagglutination inhibition (HI) assay from 2017-2021 among 30 healthy male adult participants of the ACS cohort for each influenza virus (sub)type. Mean antibody titres changes across all individuals are drawn in bold lines with error bars indicating the mean standard error ($n=30$). **b**, Seasonal influenza epidemic activity 2017-2021 in the Netherlands based on virological and syndromic surveillance data. **c**, HI titre distributions in the ACS cohort following each winter epidemic period coloured by influenza virus (sub)type. HI titre distributions of individuals who experienced a ≥ 2 Log_2 units increase in HI titre (≥ 4 -fold increase in HI titre), indicating likely infection in the previous winter epidemic period, are shown in grey bars. **d**, Antibody waning rates by influenza virus type and subtype in adults estimated from HI titres from 30 ACS and 65 RECoVERED individuals. Error bars correspond to the 50% and 95% credible interval from the Markov Chain Monte Carlo algorithm used to explore the distribution of model parameters. Waning rate of -1.0 corresponds to one two-fold decrease in HI antibody titre in one year. Details on waning and measurement parameter estimates detailed in Extended Data Table. 2.



Extended Data Fig. 3. Relative sizes of seasonal influenza epidemics in the Netherlands in the decade preceding the COVID-19 pandemic. The relative size of influenza A/H3N2, A/H1N1pdm09, and B epidemics in the Netherlands, defined as the influenza-like illness rate in the Netherlands per season multiplied by the proportion of isolates corresponding to each (sub)type in each season, scaled such that a relative size of one corresponds to the mean total influenza-like illness rate in a single season.



Extended Data Fig. 4. Additional model output and model comparison. **a**, The difference in expected log posterior predictive density between the same models with and without season effects, for all three main model formulations discussed in the main text. Error bars indicate the standard error of the difference. **b**, Posterior distributions of parameter estimates in a Bayesian hierarchical model for epidemic size, with one of year since previous dominance of the other subtype, previous season size of the other subtype, or sum of previous two seasons' size of the other subtype as predictor, either with or without season effects. Circles, diamonds, and squares, respectively, correspond to the above three models. In panel b estimates above the dotted line represent the season effects. Points, thick and thin lines correspond to the posterior mean, 50% CI, and 95% CIs, respectively.

Extended Data Table 1 | Waning and measurement parameter estimates for ACS participants 31-100

Cohort	Waning rates				Measurement error
	A/H3N2	A/H1N1pdm09	B/Yamagata	B/Victoria	
ACS 2017-21	-0.20 [-0.24, -0.16]	-0.10 [-0.12, -0.07]	-0.13 [-0.16, -0.10]	-0.14 [-0.17, -0.11]	0.38 [0.36, 0.40]
ACS 2020-21	-0.14 [-0.26, -0.01]	-0.02 [-0.12, 0.09]	0.13 [0.03, 0.23]	0.11 [0.01, 0.21]	0.20 [0.18, 0.23]
RECoVERED 2020-21	-0.15 [-0.31, 0.01]	-0.08 [-0.19, 0.03]	-0.08 [-0.20, 0.04]	-0.10 [-0.22, 0.02]	0.33 [0.31, 0.36]
ACS & RECoVERED 2020-21	-0.15 [-0.25, -0.04]	-0.06 [-0.14, 0.01]	0.01 [-0.07, 0.09]	0.00 [-0.08, 0.08]	0.29 [0.27, 0.31]

Mean and 95% confidence interval (square brackets) of the posterior distributions of the parameters characterising the antibody waning model. Model was fit using haemagglutination inhibition data from ACS participants 31-100.

Extended Data Table 1. Waning and measurement parameter estimates for ACS participants 31-100. Mean and 95% confidence interval (square brackets) of the posterior distributions of the parameters characterising the antibody waning model. Model was fit using haemagglutination inhibition data from ACS participants 31-100.

Extended Data Table 2 | Waning and measurement parameter estimates for ACS participants 1-30

Cohort	Waning rates				Measurement error
	A/H3N2	A/H1N1pdm09	B/Yamagata	B/Victoria	
ACS 2017-21	-0.12 [-0.21, -0.02]	-0.23 [-0.29, -0.17]	-0.23 [-0.29, -0.16]	-0.10 [-0.16, -0.03]	0.54 [0.50, 0.58]
ACS 2020-21	0.01 [-0.39, 0.41]	-0.47 [-0.75, -0.19]	-0.32 [-0.60, -0.05]	0.00 [-0.28, 0.26]	0.44 [0.39, 0.51]
RECoVERED 2020-21	-0.15 [-0.31, 0.01]	-0.08 [-0.19, 0.03]	-0.08 [-0.20, 0.04]	-0.10 [-0.22, 0.02]	0.33 [0.31, 0.36]
ACS & RECoVERED 2020-21	-0.12 [-0.28, 0.03]	-0.17 [-0.27, -0.06]	-0.13 [-0.24, -0.02]	-0.08 [-0.19, 0.03]	0.36 [0.34, 0.39]

Mean and 95% confidence interval (square brackets) of the posterior distributions of the parameters characterising the antibody waning model. Model was fit using haemagglutination inhibition data from ACS participants 1-30.

Extended Data Table 2. Waning and measurement parameter estimates for ACS participants 1-30. Mean and 95% confidence interval (square brackets) of the posterior distributions of the parameters characterising the antibody waning model. Model was fit using haemagglutination inhibition data from ACS participants 1-30.