

Title: The effect of reactive balance training on falls in daily life: an updated systematic review and meta-analysis

Authors: Augustine Joshua Devasahayam,¹ Kyle Farwell,^{1,2} Bohyung Lim,^{1,2} Abigail Morton,³ Natalie Fleming,^{4,5} David Jagroop,¹ Raabeae Aryan,^{1,6} Tyler Mitchell Saumur,^{1,6,7} Avril Mansfield^{1,7,8}

Affiliations: ¹KITE-Toronto Rehabilitation Institute, University Health Network; ²Faculty of Kinesiology and Physical Education, University of Toronto; ³Faculty of Health, University of Waterloo; ⁴École de readaptation, Université de Sherbrooke; ⁵École de kinésiologie et de loisir, Université de Moncton; ⁶Rehabilitation Sciences Institute, University of Toronto; ⁷Evaluative Clinical Sciences, Hurvitz Brain Sciences Program, Sunnybrook Research Institute; ⁸Department of Physical Therapy, University of Toronto

Corresponding author: Augustine Joshua Devasahayam; 550 University Avenue, Toronto, ON, M5G 2A2; 416-597-3422 ext 7614; augustine.devasahayam@uhn.ca

Conflicts of interests: The authors have created a reactive balance training toolkit, which is partially monetized.

Acknowledgements: We thank Jessica Babineau, BA, MLIS, for her assistance with the literature search. Avril Mansfield was supported by a New Investigator Award from the Canadian Institutes of Health Research.

Keywords: Postural balance, Exercise therapy, Physiotherapy (techniques), Mobility limitation, Accidental falls

ABSTRACT

Objective: Reactive balance training is an emerging approach to reduce falls risk in people with balance impairments. The purpose of this study was to determine the effect of reactive balance training on falls in daily life among individuals at increased risk of falls, and to document associated adverse events. **Data sources:** Databases searched were Ovid MEDLINE (1946-November 2020), Embase Classic and Embase (1947-November 2020), Cochrane Central Register of Controlled Trials (2014-November 2020), Physiotherapy Evidence Database (PEDro; searched on 9 November 2020). **Study selection:** Randomized controlled trials of reactive balance training were included. The literature search was limited to English language. Records were screened by two investigators separately. **Data extraction:** Outcome measures were number of participants who reported falls after training, number of falls reported after training, and the nature, frequency, and severity of adverse events. Authors of included studies were contacted to obtain additional information. **Data synthesis:** Twenty-five trials were included, of which 14 reported falls and 19 monitored adverse events. Participants assigned to reactive balance training groups were less likely to fall compared to control groups (fall risk ratio: 0.75, 95% confidence interval=[0.60, 0.92]; p=0.006, I²=37%) and reported fewer falls than control groups (rate ratio: 0.60, 95% confidence interval=[0.42, 0.86]; p=0.005, I²=83%). Prevalence of adverse events was higher in reactive balance training (29%) compared to control groups (19%; p=0.018). **Conclusion:** RBT reduces the likelihood of falls in daily life for older adults and people with balance impairments. More adverse events were reported for reactive balance training than control groups. **Impact:** Balance training that evokes balance reactions can reduce falls among people at increased risk of falls.

INTRODUCTION

Falls are a common cause of injuries and deaths among people with balance impairments, such as older adults.¹ Fall-related injuries result in significant healthcare costs to older adults and pose an economic burden to society.² Exercise that includes balance training can reduce the rate of falls by about 25%.³ However, individualized exercise approaches seem to be more effective in reducing falls risk than others (e.g., based on the frequency, intensity, type, and duration of training).³

Effective balance control involves the ability to sustain postures, move between postures, and to react to perturbations (loss of balance).⁴ A fall happens when a person fails to respond to a balance perturbation,⁵ therefore, impaired balance reactions may increase the risk for falls. Indeed, a meta-analysis of 61 studies including 9,536 older adults reported that impaired reactive stepping was a significant risk factor for falls among older adults.⁶ ‘Conventional’ balance exercises mostly involve maintaining balance during static postures or during movement.³ Reactive balance training (RBT) is a type of balance training where participants repeatedly experience balance perturbations, and execute balance reactions to prevent a fall.⁷ RBT has been shown to improve control of balance reactions, and therefore, might help individuals respond to a loss of balance and prevent a fall, in daily life.⁸⁻¹⁰ Indeed, we previously reported in a meta-analysis of small randomized controlled trials that RBT reduces the rate of falls in daily life by almost half among people with increased fall risk, compared to other types of exercise or no intervention.⁷ This previous review was completed in 2015;⁷ more randomized controlled trials on RBT have been published since then.

The purpose of this study was to determine the effect of RBT, compared to either no or an active non-RBT control intervention, on falls in daily life in people who are at an increased risk of falls. Clinical interventions must balance intervention efficacy and harms.¹¹ Therefore, our secondary aim was to document the nature, frequency, and severity of adverse events due to RBT, and to determine if there is an increased prevalence of adverse events with RBT compared to other types of exercise.

METHODS

Study design

This study is an update of a previous systematic review and meta-analysis,⁷ registered with PROSPERO database (CRD42020220552),¹² conducted according to the Cochrane Handbook for Systematic Reviews of Interventions,¹³ and reported using the PRISMA statement for reporting systematic reviews and meta-analyses of randomized controlled studies.¹⁴

Eligibility criteria

Studies that met the following criteria were included in this review: (1) published in English; (2) an experimental investigation of RBT; (3) included people at increased risk of falls due to impaired balance control, such as apparently healthy older adults (60 years or older), people with neurological conditions (e.g., stroke or Parkinson's disease), people with COPD, people with lower-extremity amputations or joint replacement, or any other condition that increases the risk for falling; (4) included a control group that did not complete RBT; (5) randomly allocated participants to RBT and control groups; and (6) reported information about falls in daily life after the intervention and/or adverse events. RBT was defined as a training method where participants intentionally experience repeated loss of balance, with a goal of evoking balance reactions such as stepping or reach-to-grasp responses, so that participants can practice and improve control of balance reactions. The loss of balance can either be caused by an external force (e.g., a moving platform, push or pull from a therapist) or by the participant's inability to maintain balance during voluntary movement.

Data sources and search strategy

The literature search was conducted in MEDLINE® ALL (in Ovid, including Epub Ahead of Print, In-Process & Other Non-Indexed Citations, Ovid MEDLINE® Daily; 1946 to 5 November 2020), Embase (in Ovid, including Embase Classic; 1947 to 10 November 2020), Physiotherapy Evidence Database (PEDro; searched on 9 November 2020), and Cochrane Central Register of Controlled Trials (Ovid; 2014 to 10 November 2020) databases by an information specialist. Since the terminology related to RBT (also referred to as perturbation-based balance training) did not have standardized keywords or Medical Subject Headings (MeSH) terms, a search strategy involving multiple relevant keywords was used. A sample search strategy is provided as a supplementary material (Appendix A).

Selection process

The titles of articles retrieved from the databases were screened by two reviewers independently and clearly ineligible titles were removed. The abstracts of the remaining articles were screened again by two reviewers independently to determine eligibility for this review. The full text of the article was read by the reviewers if they were unable to determine eligibility from the abstract. Disagreements between reviewers regarding inclusion of a study were resolved via discussion, or consultation with the study team if necessary. The reference lists of relevant review articles were also screened by the two reviewers using steps mentioned above to identify studies that might be eligible for this review. Authors of papers, including study protocols, that met all but the last inclusion criterion (reported data on falls in daily life and/or adverse events), were contacted to determine if these data existed. Bibliographic references were managed using Endnote (version X5, Thomson Reuters, Philadelphia, Pennsylvania, USA).

Data collection process

The following data were extracted from the articles selected for this review: details of the population studied; details of the RBT and control interventions; number of participants allocated to RBT and control groups; falls monitoring duration; number of participants in each group reporting one or more falls after completing the interventions; total number of falls per group reported after the interventions; and the nature, frequency, and severity of adverse events reported in RBT and control groups. The trial protocols and secondary publications were accessed to obtain the required information, if necessary and available. The corresponding authors of included studies were also contacted for additional details and to obtain any missing information. The data were extracted and compiled into a Microsoft Excel® spreadsheet. The three outcomes of interest from studies included in this review were: (1) number of participants who experienced one or more falls after the end of the intervention; (2) number of falls in daily life after the end of the intervention; and (3) nature, frequency, and severity of adverse events during the intervention. Adverse events were deemed to be severe if they were life threatening or resulted in permanent harm, moderate if they required hospitalization or resulted in withdrawal from the intervention (such that the participant no longer received the benefits of the intervention), or mild otherwise.

Methodological quality and risk of bias assessment

Studies included in this review were rated for methodological and reporting quality by two reviewers independently using the PEDro scale.¹⁵ Disagreement during data extraction and quality assessment of the included articles were resolved by consensus after discussion between reviewers. If an agreement was not reached between two reviewers, the final scores were assigned by an independent third reviewer. The final PEDro scores were classified as good for ≥ 6 , fair for 4 to 5, and poor for ≤ 3 , based on previous sensitivity analyses with cut-offs set at 4 and 6.^{15, 16}

Risk of bias was evaluated independently by two reviewers for all studies that assessed risk of falls using the revised Cochrane Risk of Bias Tool in five domains: (1) risk of bias arising from the

randomization process; (2) risk of bias due to deviations from the intended interventions; (3) missing outcome data; (4) risk of bias in measurement of the outcome; and (5) risk of bias in selection of the reported results.^{17, 18} The studies were rated as: ‘high risk’ of bias if at least one out of five domains was at a high risk of bias or if there were ‘some concerns’ of bias for multiple domains; rated as ‘some concerns’ if at least one out of five domains had ‘some concerns’ of bias with no other domains at ‘high risk’ of bias; and rated as ‘low risk’ of bias if all five domains were at ‘low risk’ of bias.^{17, 18} Disagreement between reviewers during the risk of bias assessment was resolved by consensus after discussion, or by an independent third reviewer if consensus could not be reached.

Data analysis

Data extracted from included studies were analysed using Review Manager (RevMan) software (version 5.4.1, The Cochrane Collaboration, Copenhagen, Denmark). Heterogeneity was assessed using chi-squared test of heterogeneity and I² statistic.¹⁹ Data from included studies were pooled using random effects modeling when heterogeneity was significant (>30%).¹³ A subgroup meta-analysis was performed that excluded studies with a no-intervention control group. The effects of RBT on falls in daily life compared to control interventions were reported as fall risk ratios and fall rate ratios, where the fall risk ratio compared the number of participants who experienced one or more falls between groups and the fall rate ratio compared the number of falls between groups. Ninety-five percent confidence intervals (95% CIs) were calculated for the overall effects and the significance level was set at 0.05 for all analyses. The total number of participants with adverse events during RBT and control group training were summarized in percentages and compared using Fisher’s Exact test through SAS® software (SAS Institute, Inc., Cary, North Carolina).

Reporting bias assessment

Funnel plot asymmetry was used to examine bias in the results of the meta-analyses of risk of falls and rate of falls as per Sterne *et al.*,²⁰ recommendations. Two independent reviewers evaluated the possible sources of asymmetry on funnel plots due to selective non-reporting or non-publication of findings from the studies, poor methodological quality in studies with inflated effects, true heterogeneity between studies (e.g., due to difference in intensity of interventions), sampling variation, and random chance.²¹ Disagreement between reviewers during the reporting bias assessment was resolved by consensus after discussion or by an independent third reviewer.

Certainty assessment

Certainty of evidence from studies that contributed data to the meta-analysis of risk of falls was assessed separately by two reviewers using five ‘Grading of Recommendations, Assessment, Development, and Evaluation (GRADE)’ domains (risk of bias, inconsistency, indirectness, imprecision, other considerations).²² The labels from GRADE certainty of evidence assessment, i.e., not serious, serious, and very serious, were used to assess the body of evidence we evaluated through meta-analysis.²³⁻²⁵ These labels correspond to high, moderate, and low certainty of evidence for randomized-controlled studies.²³⁻²⁵ The Cochrane Handbook for Systematic Reviews of Interventions was used to conduct the certainty assessment and prepare the summary of findings table through GRADEpro GDT software (GRADEpro guideline development tool, McMaster University and Evidence Prime Inc., Hamilton, Ontario, Canada).²⁶ Disagreement between the reviewers during certainty assessment was resolved by consensus after discussion or by an independent third reviewer.

Role of the funding source

The funding agencies played no role in the conception, design, conduct, data analysis, interpretation of findings, or reporting of this study.

Table 1: Characteristics of included studies

Study	Location	Sample	RBT intervention	Control intervention	Fall monitoring duration	Adverse events monitored
Toole 2000 ²⁷	USA	People with Parkinson's disease.	15 posterior manual pulls per session, in addition to lower-extremity resistance training and standing balance exercises. 1-hour sessions, 3 times per week for 10 weeks.	No intervention.	None	Yes*
Shimada 2004 ²⁸	Japan	Frail long-term care residents at a high risk for falls.	Usual exercise plus perturbed walking on a treadmill, 600 minutes over 6 months (1-3 times per week).	Individualized 'usual' exercise (e.g., physiotherapy for pain, stretching, resistance training).	6 months	No
Protas 2005 ²⁹	USA	Men with Parkinson's diseases (Hoehn & Yahr stage 2-3).	Gait and step training with treadmill-based perturbations to stance, 25-35 perturbations per session. Three 1-hour sessions per week for 8 weeks.	No intervention.	2 weeks	No
Marigold 2005 ³⁰	Canada	People with chronic stroke (≥12 months post-stroke, >50 years old)	Agility training that included manual multi-directional push perturbations, in sets of 10 perturbations, typically with 3 sets per session.	Stretching and 'tai chi'-like weight-shifting exercises.	12 months	Yes
			Three 1-hour sessions per week for 10 weeks.			
Maki 2008 ³¹	Canada	Older adults attending a falls prevention program.	Multi-directional moving platform perturbations to stance to train reactive stepping and grasping.	Voluntary step and reach-to-grasp training.	12 months	Yes*
			Three 30-minute sessions per week for 6 weeks.			
Mansfield 2010 ⁹	Canada	Healthy older adults (64-80 years old).	Moving platform perturbations to stance, 48-64 perturbations per session. Perturbation magnitude increased when participants could consistently respond to the current magnitude with a single step.	Stretching and relaxation exercises.	12 months	Yes
			Three 30-minute sessions per week for 6 weeks.			

Study	Location	Sample	RBT intervention	Control intervention	Fall monitoring duration	Adverse events monitored
Smania 2010 ³²	Italy	People with idiopathic Parkinson's disease and postural instability (Hoehn & Yahr stage 3-4).	Balance training program that included external perturbations (push/pull from a physiotherapist; 10 mins per session).	Joint mobilization, muscle stretching, and motor coordination exercises not designed to improve balance control.	1 month	Yes
			50-minute sessions, 3 times per week for 7 weeks.			
Parijat 2012 ³³	USA	Healthy older adults (>65 years old).	12 slip perturbations caused by the movement of a moveable platform that slid forward at the transition between double and single support during overground walking.	Unperturbed overground walking.	None	Yes*
			One 15-20 minute session.			
Halvarsson 2013 ³⁴	Sweden	Community-dwelling older adults (≥65 years old), with a fear of falling and/or with an experience of a fall during the previous 12 months.	External perturbations provided by the instructor or partner. Also included 'typical' balance exercises with a focus on maintaining balance. Three 45-minute sessions per week for 12 weeks.	No intervention	12 months	No
Pai 2014 ³⁵	USA	Community-dwelling older adults (≥65 years old).	24 slips to overground walking via a pair of side-by-side low-friction movable platforms that slid forward by 0.9 m.	10 unperturbed overground walking trials.	12 months	No
			One session.			
Morgan 2015 ³⁶	Australia	Adults with cerebral palsy who were able to walk independently with or without a gait aid.	Strength and balance training (30 minutes of each), including dynamic gait activities and practice of anticipatory and reactive dynamic balance strategies in standing and stepping.*	Guided relaxation, seated yoga, and Tai Chi.	None	Yes
			One 1.5-hour session per week for 8 weeks.			

Study	Location	Sample	RBT intervention	Control intervention	Fall monitoring duration	Adverse events monitored
Schlenstedt 2015 ³⁷	Germany	People with idiopathic Parkinson's disease (Hoehn & Yahr stage: 2.5-3.0).	Manual perturbations (shoulder pulls by the therapist).	Lower-extremity resistance training.	None	Yes
			60 min sessions, 2 times per week, for 7 weeks.			
Shen 2015 ³⁸	Hong Kong	People with idiopathic Parkinson's disease, stable on anti-Parkinsonian medications, able to walk independently for 10 m, and able to follow instructions.	Treadmill walking with multi-directional perturbations. Overground walking with manual perturbations provided by the therapist.	Hip, knee, and ankle strengthening exercises using dynamometers, leg-press, and rowing machines.	12 months	No
			12 weeks, with 2 phases of 4-week laboratory-based training (60 minutes per session) separated by 4 weeks of home-based training (20 minutes per session).			
Kumar 2016 ³⁹	India	People sub-acute stroke (≤ 3 months post-stroke) who were between 40 to 70 years old and ambulatory with or without aids.	Multi-directional manual perturbations to sitting, kneeling, and standing (10 perturbations per posture), in addition to 'conventional' physiotherapy.	Conventional physiotherapy, including range of motion exercises, resistance training, weight bearing/shifting, reaching, activities of daily living, and gait training.	None	Yes*
			Six 45-minute sessions per week for 4 weeks.			
Gandolfi 2017 ⁴⁰	Italy	Adults with Parkinson's disease (Hoehn&Yahr stages 2.5-3)	Multi-directional manual perturbations, delivered by the physiotherapist, completed as part of a sensory integration balance training program that included weight bearing, transfers, and maintaining balance on unstable surfaces. There were 10 exercises completed in total, 6 of which included external perturbations. Each exercise was repeated 5-10 times in 5 minutes.	Balance exergames using the Nintendo Wii.	None	Yes*
			Three 50-minute sessions per week for 7 weeks.			

Study	Location	Sample	RBT intervention	Control intervention	Fall monitoring duration	Adverse event reporting
Steib 2017 ⁴¹	Germany	People with Parkinson's disease (Hoehn & Yahr stage 1-3.5)	Treadmill walking with perturbations; the treadmill was mounted on a tiltable platform. Continuous, random perturbations delivered via lifting of three pneumatic actuators by up to 3cm.	Unperturbed treadmill walking.	None	Yes
Two 35-minute sessions per week for 8 weeks.						
Mansfield 2018 ⁸	Canada	Community-dwelling adults with chronic stroke (>6 months post-stroke)	Challenging balance tasks to evoke internal perturbations, or external manual perturbations (lean-and-release or push/pull from therapist). 60 perturbations per session, with intensity set such that participants needed assistance to recover, took multiple steps, or used an upper extremity response ~50% of the time.	Traditional balance training, including overground walking, sit-to-stand, heel raises, walking with an object, tap-ups, reaching, weight shifting, standing with reduced base of support.	12 months	Yes
Two 1-hour sessions per week 6 weeks plus 2 1-hour 'booster' sessions (3 months and 9 months after initial training period).						
Aviles 2019 ⁴²	USA	Independent residents of senior housing facilities (≥70 years old).	Up to 40 perturbations to stance per session delivered using a modified treadmill; perturbations were delivered over 40 ms at 0.22 m/s for forward belt movement or between 0.22 and 1.07 m/s for backward belt movement.	Group Tai Chi training; 12 unique sequences from the Yang Short Form.	6 months	Yes
30-minutes per session, 3 times per week for 4 weeks.						

Study	Location	Sample	RBT intervention	Control intervention	Fall monitoring duration	Adverse event reporting
Handelzalts 2019 ⁴³	Israel	People with stroke who are receiving rehabilitation	Multi-directional (medio-lateral or antero-posterior) perturbations, delivered in a random order using a treadmill mounted on a moveable platform. 36 perturbations to stance, and 30 perturbations during treadmill walking per session. Progressed to higher intensity if participants were able to recover from 24 consecutive perturbations without a 'fall'. Antero-posterior perturbations: distance=10.44 – 29.06cm; velocity=0.18 – 0.54m/s, acceleration: 1.27 – 2.44 m/s/s; medio-lateral perturbations: displacement: 5.68-17.41 cm, velocity: 0.20 – 0.58 m/s, acceleration: 0.73 – 1.94 m/s/s.	36 voluntary weight shifting exercises using force platform biofeedback, and 10-12-minutes of unperturbed treadmill walking.	None	Yes
			Twelve 30-minute sessions over 2.5 weeks.			
Okubo 2019 ⁴⁴	Australia	Physically active community-dwelling older adults (65-90 years).	30 slip and 30 trip perturbations total, induced during overground walking by an instrumented walkway. Gait speed was 40-90% of the participant's usual speed, trip board height was 7 or 14 cm, and the slip distance was 20-40 cm. Three 40-minute sessions over 2 days.	Target step training (stepping on target tiles) with a specific cadence. 30 trials in one 40-minute session.	None	Yes
Esmaeili 2020 ⁴⁵	Canada	People with chronic unilateral stroke (>6 months).	36 perturbations per session, delivered during walking via acceleration/deceleration of one belt on a split-belt treadmill.	Walking on a treadmill at a comfortable speed (n=8).	None	Yes*
			Nine sessions over 3 weeks, 35-70 min/session depending on gait speed.			

Study	Location	Sample	RBT intervention	Control intervention	Fall monitoring duration	Adverse event reporting
Lurie 2020 ⁴⁶	USA	Older adults (≥65 years old) who were at risk of falling.	Antero-posterior perturbations to walking or stance, delivered using a treadmill, in addition to 'usual care' (see description of control intervention). The duration of RBT and number of perturbations was at the discretion of the treating physiotherapist.	Individualized 'usual care', including strength, flexibility, balance, and mobility training, patient education, and home exercise prescription.	12 months	No
			45-minute sessions, 2-3 times per week for 4-6 weeks (varied based on participant need).			
Rieger 2020 ⁴⁷	Netherlands	Healthy community-dwelling older adults.	Treadmill walking with 16 antero-posterior perturbations (8 belt accelerations and 8 belt decelerations at foot contact) at either low (8 m/s ² for 0.11 s) or high (10 m/s ² for 0.13 s) intensity.	8-minutes of unperturbed treadmill walking at 1 m/s.	None	Yes*
			One session.			
Unger 2021 ⁴⁸	Canada	Adults with an incomplete spinal cord injury (C or D on the American Spinal Association Impairment Scale), >1 year post-injury, able to stand independently.	Multi-directional manual perturbations delivered during the same balance tasks that the control group completed (~45 perturbations per session).	Conventional balance training, including static and dynamic balance tasks.	6 months	Yes
			3 1-hour sessions per week for 8 weeks.			

*Information not reported in the publication and obtained from the study author(s).

RESULTS

Study selection

For the purposes of this review, a ‘record’ refers to a document indexed in a database, a ‘report’ refers to a document supplying information about a study (e.g., paper or abstract), and a ‘study’ refers to an investigation of one or more interventions in a group of participants;⁴⁹ a study can have several reports (e.g., protocol paper, primary publication, secondary publication(s)). A total of 5,606 records were identified through database searching and an additional 182 records were identified from other sources. The records included in our previous review⁷ were also screened (n=9).

After removing duplicates, the remaining records (n=3,491) were screened for eligibility through a title search. The abstracts of the remaining reports (n=518) were assessed for eligibility. One study included in the previous review was removed from this review due to pseudo-random group allocation.⁵⁰ Another study from the previous review was an internal pilot study for a larger randomized controlled trial that was included in the current review;⁵¹ to avoid including duplicate data in the analysis, data from the pilot study were not included in the current review. After screening, 40 reports of 25 studies were included in this review (Figure 1). All reports for each included study are listed in Appendix B. The characteristics of the studies included in this review are presented in Table 1.

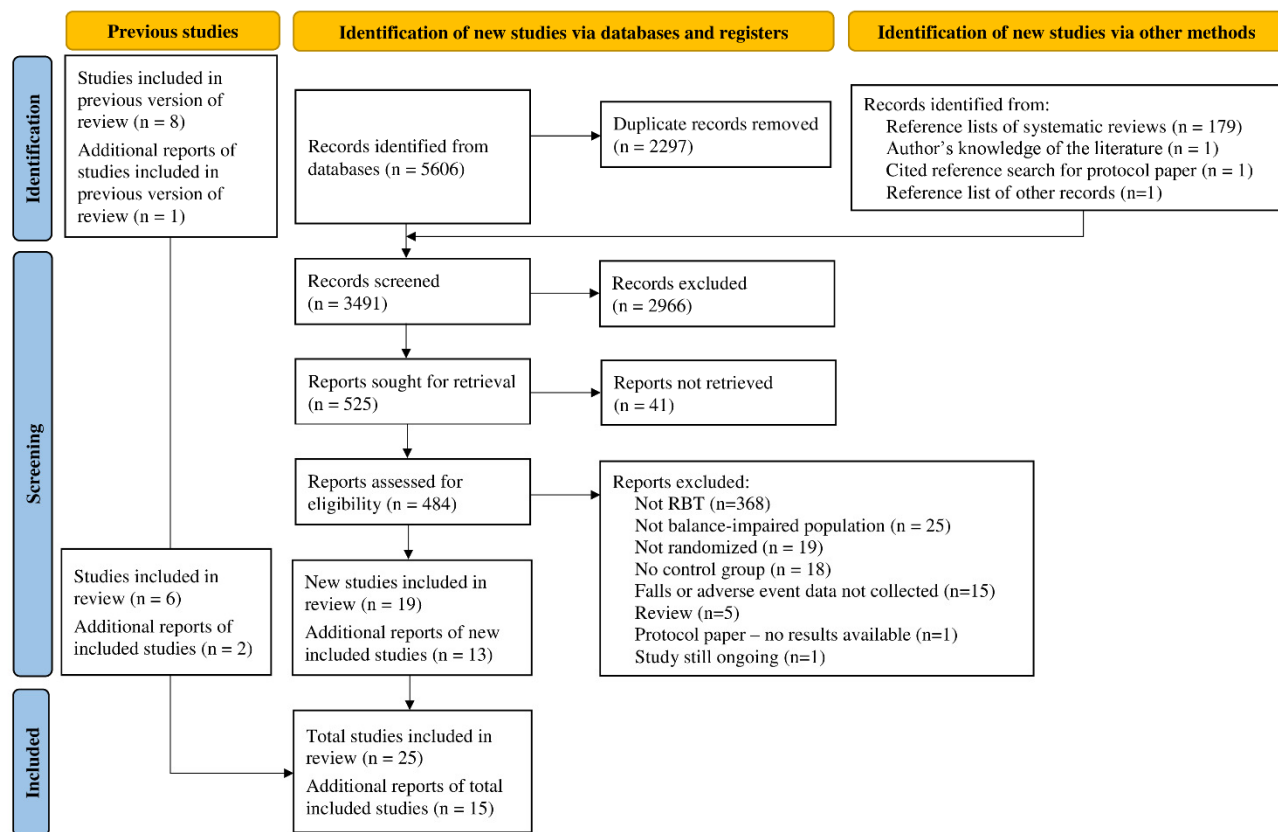


Figure 1: PRISMA flow diagram

Study characteristics

Participants in studies included in this review were community-living older adults;^{9, 31, 33-35, 44, 46, 47, 50, 52} adults with Parkinson’s disease,^{27, 29, 32, 37, 38, 40, 41} stroke,^{8, 30, 39, 43, 45} cerebral palsy,³⁶ and spinal cord injury;⁴⁸ and long-term care residents.^{28, 42} All studies had RBT as either a sole or a significant component of the experimental intervention. Three studies did not provide any intervention to the control group,^{27, 29, 34} and the remaining studies used non-RBT exercise for the control intervention. The loss of balance during RBT was caused by manual perturbations,^{8, 27, 30, 32, 34, 36, 37, 39, 40, 48}

challenging balance tasks to evoke internal perturbations,^{8, 48} single-axis or multi-directional perturbations on a treadmill or a moveable platform,^{9, 28, 29, 38, 41-47, 52} and/or slip and trip perturbations on a walkway with movable tiles/platforms and tripping obstacles.^{33, 35, 44} The frequency of RBT ranged from one training session total^{33, 35, 47} to 3 times per week.^{9, 27-32, 34, 40, 42, 46, 48} The duration of RBT training ranged from 15 minutes³³ to 1.5 hours³⁶ per session; most studies (19/25) conducted RBT for 30 to 60 minutes per session.

Methodological quality and risk of bias in studies

The methodological and reporting quality assessed using PEDro scale was good (≥ 6) in 18 studies, fair (4 to 5) in 6 studies, and poor (≤ 3) in 1 study (Table 2). Out of 25 studies, 19 reported conducting an intention-to-treat analysis. None of the included studies blinded participants to the intervention they received. In one study,³² the therapists did not know whether they were providing the experimental or control intervention.

Table 2: PEDro scores of included studies

Study	PEDro items											Total
	1*	2	3	4	5	6	7	8	9	10	11	
Toole 2000 ²⁷	No	1	0	1	0	0	0	0	0	1	1	4
Shimada 2004 ²⁸	Yes	1	0	1	0	0	1	0	1	1	1	6
Marigold 2005 ³⁰	Yes	1	1	1	0	0	1	0	1	1	1	7
Protas 2005 ²⁹	Yes	1	0	1	0	0	0	0	1	1	0	4
Maki 2008 ³¹	Yes	1	0	0	0	0	0	0	1	0	0	2
Mansfield 2010 ⁹	Yes	1	1	1	0	0	0	1	0	0	0	4
Smania 2010 ³²	Yes	1	1	1	0	0	1	0	1	1	1	7
Parijat 2012 ³³	Yes	1	0	1	0	0	0	0	0	1	1	4
Halvarsson 2013 ³⁴	Yes	1	1	1	0	0	1	1	1	1	1	8
Pai 2014 ³⁵	Yes	1	0	1	0	0	0	0	1	1	1	5
Morgan 2015 ³⁶	Yes	1	1	1	0	0	1	1	1	1	1	8
Schlenstedt 2015 ³⁷	Yes	1	0	1	0	0	1	0	1	1	1	6
Shen 2015 ³⁸	Yes	1	1	1	0	0	1	0	1	1	1	7
Kumar 2016 ³⁹	Yes	1	0	1	0	0	0	0	0	1	1	4
Kurz 2016 ⁵²	Yes	1	1	0	0	0	1	0	1	1	1	6
Gandolfi 2017 ⁴⁰	Yes	1	0	1	0	0	1	1	0	1	1	6
Steib 2017 ⁴¹	Yes	1	1	1	0	0	1	1	0	1	1	7
Mansfield 2018 ⁸	Yes	1	1	1	0	0	1	1	1	1	1	8
Aviles 2019 ⁴²	Yes	1	0	1	0	0	1	0	1	1	1	6
Handelzalts 2019 ⁴³	Yes	1	1	1	0	0	1	1	1	1	1	8
Okubo 2019 ⁴⁴	Yes	1	1	1	0	0	1	1	1	1	1	8
Esmaeili 2020 ⁴⁵	Yes	1	0	1	0	0	1	1	1	1	1	7
Lurie 2020 ⁴⁶	Yes	1	1	0	0	0	0	1	1	1	1	6
Rieger 2020 ⁴⁷	Yes	1	0	1	0	0	0	1	1	1	1	6
Unger 2021 ⁴⁸	Yes	1	1	1	0	0	1	1	1	1	1	8

PEDro items: (1) eligibility criteria; (2) random allocation; (3) concealed allocation; (4) baseline comparability; (5) blind subjects; (6) blind therapists; (7) blind assessors; (8) adequate follow-up; (9) intention-to-treat analysis; (10) between-group comparisons; (11) point estimates and variability. *The eligibility criteria item in the PEDro scale does not contribute to the PEDro score. PEDro: Physiotherapy Evidence Database.

Risk of bias, assessed using the revised Cochrane Risk of Bias Tool^{17, 18} in the studies that reported risk of falls and rate of falls (n=14 in total), was high in 9 studies, found to have some concerns for risk of bias in 1 study, and low in 4 studies (Table 3). Considering the findings from each of the five domains, a high risk of bias arose from the randomization process (5/14), due to deviations from the intended interventions (2/14), missing outcome data (7/14), and due to a risk of bias in measurement of the outcome (5/14).

Table 3: Risk of bias assessments using the revised Cochrane Risk of Bias Tool in studies with information about risk of falls and rate of falls

Study	Domain 1	Domain 2a	Domain 2b	Domain 3	Domain 4	Domain 5	Overall risk of bias
Aviles 2019 ⁴²	High	Some concerns	Some concerns	High	Low	Low	High
Shimada 2004 ²⁸	High	Low	Some concerns	High	Low	Low	High
Marigold 2005 ³⁰	Low	Low	Some concerns	High	Low	Low	High
Protas 2005 ²⁹	High	High	Low	Low	Some concerns	Low	High
Maki 2008 ³¹	High	Some concerns	High	High	High	Low	High
Mansfield 2010 ⁹	Low	Low	Low	Low	High	Low	High
Smania 2010 ³²	Low	Low	Low	Low	Low	Low	Low
Halvarsson 2013 ³⁴	Low	Low	Some concerns	High	Some concerns	Low	High
Pai 2014 ³⁵	High	Low	Low	High	High	Low	High
Shen 2015 ³⁸	Low	Low	Low	Low	Low	Low	Low
Kurz 2016 ⁵²	Some concerns	Low	Low	Low	Low	Low	Some concerns
Mansfield 2018 ⁸	Low	Low	Low	Low	Low	Low	Low
Lurie 2020 ⁴⁶	Low	Low	Low	Low	High	Low	High
Unger 2021 ⁴⁸	Low	Low	Low	Low	Low	Low	Low

D: domain; D1: Risk of bias arising from the randomization process; D2a: Risk of bias due to deviations from the intended interventions (effect of assignment to intervention); D2b: Risk of bias due to deviations from the intended interventions (effect of adhering to intervention); D3: Missing outcome data; D4: Risk of bias in measurement of the outcome; D5: Risk of bias in selection of the reported result.

Results of synthesis

Effect of RBT on falls in daily life

Fourteen studies monitored falls in daily life after the intervention (Table 1); the falls monitoring duration ranged from 2 weeks to 1 year. There were 1,049 participants in 13 studies that reported the number of participants who experienced 1 or more falls in daily life after the intervention (539 were assigned to the RBT groups and 510 to the control groups). Ten of the 13 studies with fall risk data reported that fewer participants in the RBT groups experienced falls following training compared to the control groups (Table 4). Participants who completed RBT were less likely to fall than those in the control group; the overall risk ratio for all 13 studies combined was 0.75 (95% CI=0.60, 0.92; p=0.006, I²=37%; Figure 2a). The risk ratio was unchanged when only studies with an active exercise control intervention were included in the analysis (11 studies; risk ratio=0.75; 95% CI=0.64, 0.88; p=0.0004, I²=11%; Figure 3).

Table 4: Falls after the intervention in the included studies

Study	Follow-up duration (months)	RBT			Control			Fall risk ratio	Fall rate ratio
		Number of fallers	Number of falls	Sample size	Number of fallers	Number of falls	Sample size		
Shimada 2004 ²⁸	6	5	8	15	6	11	11	0.61	0.53
Marigold 2005 ³⁰	12	11	25	19	16	75	21	0.76	0.37
Protas 2005 ²⁹	0.5	5	10	9	6	23	9	0.83	0.43
Maki 2008 ³¹	12	2	4	4	3	4	4	0.67	1.00
Mansfield 2010 ⁹	12	5	6	16	4	4	15	1.17	1.41
Smania 2010 ³²	1	8 ^a	36	28	19 ^a	111	27	0.41	0.31
Halvarsson 2013 ³⁴	12	18	-	34	2	-	21	5.56	-
Pai 2014 ³⁵	12	14	17	102	26	32	96	0.51	0.50
Shen 2015 ³⁸	12	6	10	22	13	18	23	0.48	0.58
Kurz 2016 ⁵²	12	9 ^a	12 ^a	21	9 ^a	18 ^a	19	0.90	0.60
Mansfield 2018 ⁸	12	19	53	41	23	64	42	0.85	0.85
Aviles 2019 ⁴²	6	-	4	16	-	5	16	-	0.80
Lurie 2020 ⁴⁶	12	128 ^a	686 ^a	218	145 ^a	603 ^a	212	0.86	1.11
Unger 2021 ⁴⁸	6	4	10	10	7	21	10	0.57	0.48
Total		234	881	555	279	989	526		

RBT: reactive balance training; ^adata received from authors.

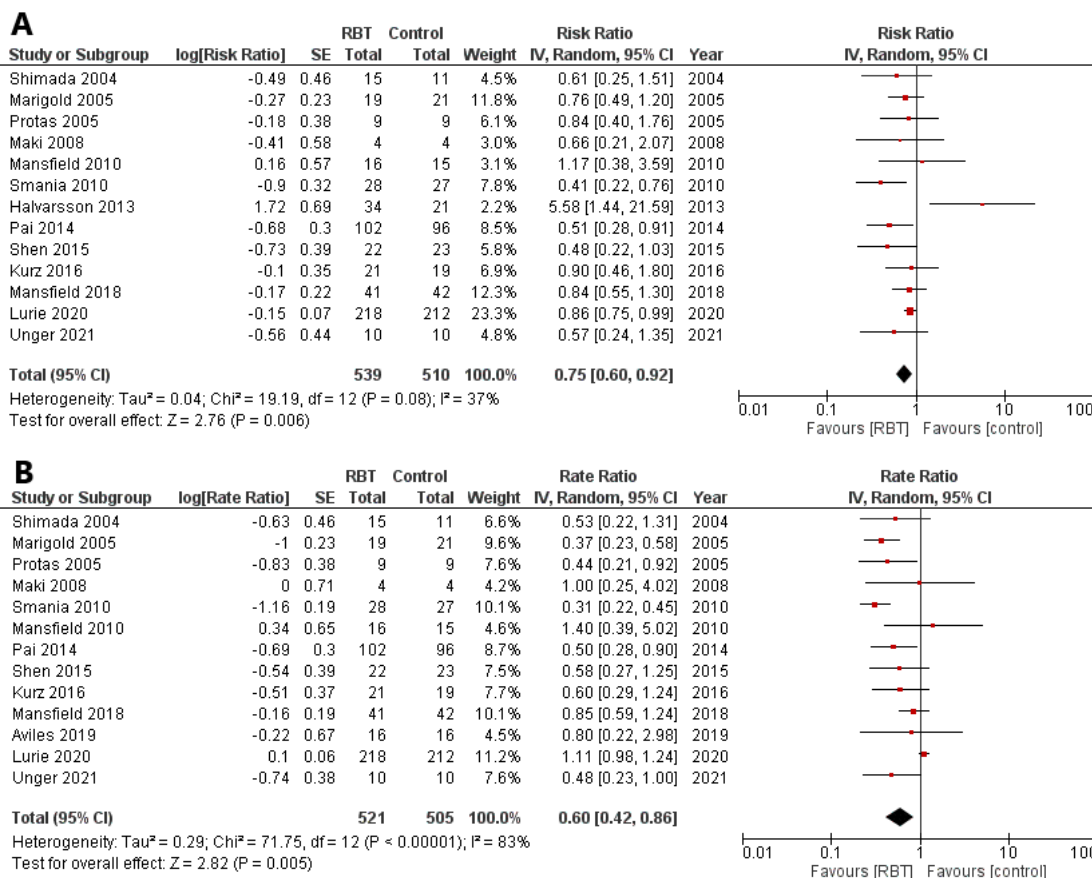


Figure 2: Results of meta-analysis for risk of falls (Panel A) and rate of falls (Panel B).

There were 1,026 participants in 13 studies that reported the number of falls experienced by participants in daily life after completing the intervention (521 were assigned to RBT groups, and 505 to the control groups). Ten of the 13 studies with fall rate data reported fewer falls in the RBT groups compared to the control groups (Table 4); the overall rate ratio for all 13 studies combined was 0.60 (95% CI=0.42, 0.86; $p=0.005$, $I^2=83\%$; Figure 2b). Again, the rate ratio was unchanged when only studies with an active exercise control intervention were included in the analysis (12 studies; rate ratio=0.61; 95% CI=0.42, 0.89; $p=0.01$, $I^2=84\%$; Figure 3).

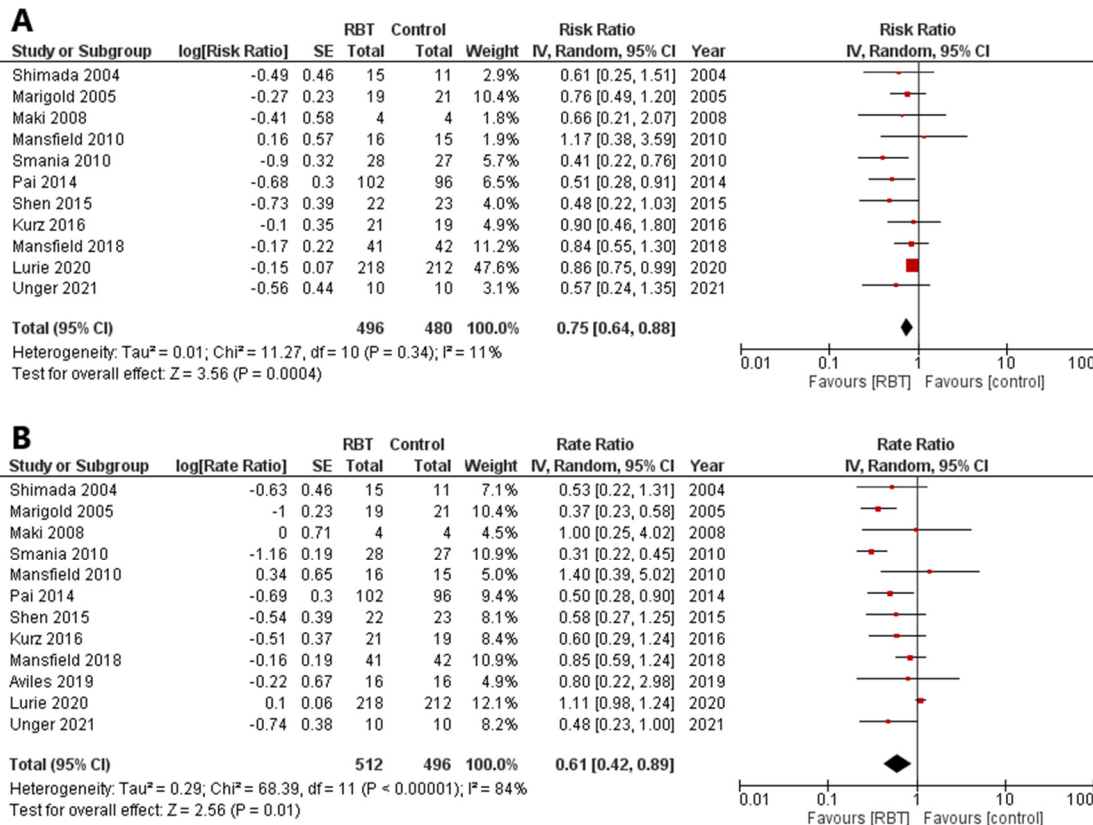


Figure 3: Results of meta-analysis for risk of falls (Panel A) and rate of falls (Panel B) in studies with an active non-RBT control intervention

Adverse events

Nineteen studies monitored adverse events. The nature, frequency, and severity of adverse events reported during RBT and control interventions are presented in Table 5. During RBT, participants reported pain (14.4%), subjective or psychological events (5.2%), musculoskeletal events (4.4%), neurological events (2.6%), fatigue (1.8%), and other adverse events (0.7%) such as fall with no injury during training or illness during training (Table 5). During control interventions, participants reported pain (9.9%), musculoskeletal events (4.6%), subjective or psychological events (1.9%), fatigue (1.1%), cardiorespiratory events (1.1%), and neurological events (0.8%; Table 5). Among 271 RBT participants, 79 reported adverse events (mild: n=63, moderate: n=15, severe: n=1; Table 5). Among 263 control participants, 51 reported adverse events (mild: n=43, moderate: n=8). There were more participants reporting adverse events in RBT groups compared to control groups (RBT: 29%, control: 19%; $p=0.018$).

Table 5: Number of participants with adverse events in each intervention group

Category	Nature of adverse events	RBT (n=271)				Control (n=263)			
		Mild	Moderate	Severe	Total	Mild	Moderate	Severe	Total
Cardio-respiratory	Shortness of breath	0	0	0	0	2	0	0	2
	Abnormal cardiovascular response to exercise	0	0	0	0	0	1	0	1
Fatigue		5	0	0	5	3	0	0	3
Musculo-skeletal	Muscle fatigue / soreness	6	0	0	6	12	0	0	12
	Injury during training	3	2	1	6	0	0	0	0
Neurological	Dizziness	5	0	0	5	2	0	0	2
	Seizure	1	0	0	1	0	0	0	0
	Headache	1	0	0	1	0	0	0	0
Pain	Non-specified pain	20	0	0	20	19	0	0	19
	Upper extremity pain	1	0	0	1	0	0	0	0
	Lower extremity pain	13	3	0	16	4	3	0	7
	Back pain	1	1	0	2	0	0	0	0
Subjective or psychological	Anxiety during training	5	1	0	6	0	0	0	0
	Did not like intervention	0	6	0	6	1	4	0	5
	Falls due to increased risk taking	1	0	0	1	0	0	0	0
	Fear of injury	0	1	0	1	0	0	0	0
	Fall during training with no injury	1	0	0	1	0	0	0	0
Other	Sick during training period	0	1	0	1	0	0	0	0
Total		63	15	1	79	43	8	0	51

RBT: reactive balance training; n: total number of participants in the respective study groups that reported adverse events.

Reporting bias

Funnels plots²¹ were examined as per the Sterne *et al.*²⁰ recommendations to assess reporting bias in the results of meta-analysis of fall risk and rate (Figure 4) The asymmetry in the funnel plots was likely due to a possibility of selective outcome reporting,^{28, 29} the true clinical heterogeneity of studies,^{9, 28, 29, 32, 42} and a random chance.³⁴

Certainty of evidence

GRADE certainty of evidence was low to moderate for risk of falls and rate of falls (Table 6), due to a lack of concealed allocation, a lack of blinding procedures, possibility of selective outcome reporting, and an incomplete outcome data due to attrition in the included studies.

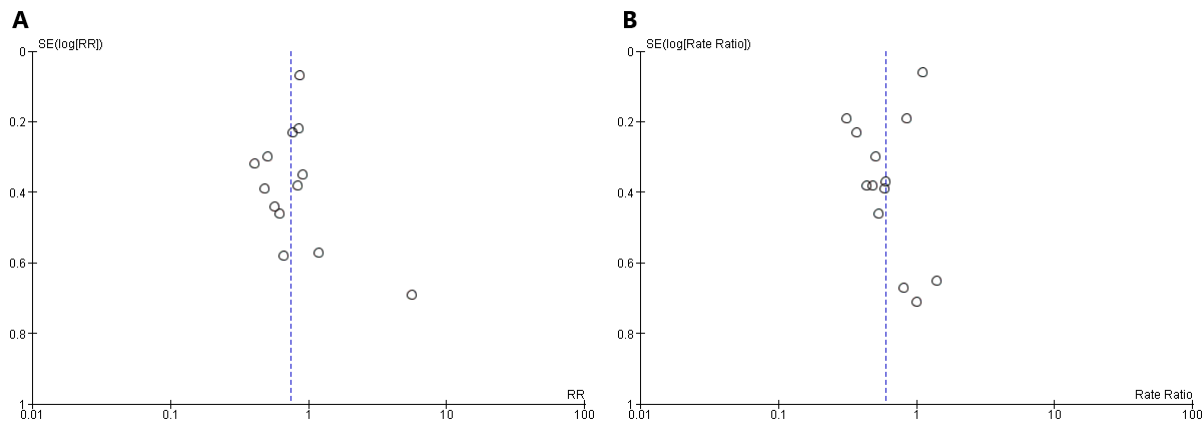


Figure 4: Funnel plot of meta-analysis for risk of falls (Panel A) and rate of falls (Panel B).

DISCUSSION

This study aimed to determine the effect of RBT on falls in daily life. Overall, we found moderate certainty of evidence that RBT can reduce falls in daily life among individuals at increased risk of falls. The overall effect for fall risk (ratio = 0.75) indicates that those who completed RBT had a 25% reduction in the risk of experiencing one or more falls compared to controls. The overall effect for fall rate (ratio = 0.60) indicates that those who completed RBT experienced 40% fewer falls when compared to controls. These risk and rate ratios are similar to our previous meta-analysis of RBT on falls in daily life, which only included 8 studies (risk ratio: 0.71, rate ratio: 0.54).⁷ Likewise, in a meta-analysis of 7 studies, Okubo et al.⁵³ reported that reactive stepping interventions reduced falls among older adults with increased risk of falls (risk ratio: 0.60, rate ratio: 0.52). Repeated task-specific motor experience, such as reactive stepping, is necessary to learn perceptual-motor abilities that are essential for recovery from loss of balance.⁵⁴ Since avoiding a fall requires the whole body to react, exercise interventions that intend to reduce the risk of falls must evoke task-specific total body balance reactions. A large Cochrane review³ including 25,160 individuals aged 60+ years from 116 studies reported that interventions with a total weekly dose of 3+ hours of task-specific balance and functional exercises were effective in reducing falls (rate ratio: 0.58) compared to controls. These findings suggest that task-specific tailored RBT programs with well-defined dosage prescription should be developed for people with balance impairments.

Unlike other types of exercise, dosage is not well defined in balance prescription. Specifically, the intensity of balance training is often assessed using metrics that are not appropriate for balance training, such as the participant's rate of perceived exertion and/or the therapist's perception of the participant's ability (i.e., safety).⁵⁵ For example, Halvarsson *et al.*³⁴ prescribed exercises at five different levels with each reflecting progressive demands on the postural control system, whereas Smania *et al.*³² challenged participants during each session with 10 different exercises before increasing the complexity of the tasks; however, both studies did not quantify the perturbation intensity. It is possible that the dosage of RBT was not sufficient in some studies included in our review to impact fall risk in daily life.⁵⁶ Furthermore, the amount of training has to reach an asymptotic level within one session in order to demonstrate performance gains across sessions.⁵⁷ Therefore, there is a need to characterize the intensity of RBT (such as perturbation force) and determine dose-response effect of RBT in future studies at different stages of recovery from balance impairments.

Table 6: Certainty assessment using GRADE recommendations

Certainty assessment							Effect	Certainty
Number of studies	Study design	Risk of bias	Inconsistency	Indirectness	Imprecision	Other considerations	Relative (95% CI)	
Risk ratio								
13	randomised trials	serious ^a	serious ^c	not serious	not serious	none	Risk ratio 0.75 (0.60 to 0.92)	⊕⊕○○ LOW
Risk ratio with active control								
11	randomised trials	serious ^b	not serious	not serious	not serious	none	Risk ratio 0.75 (0.64 to 0.88)	⊕⊕⊕○ MODERATE
Rate ratio								
13	randomised trials	serious ^a	serious ^c	not serious	not serious	none	Rate ratio 0.60 (0.42 to 0.86)	⊕⊕○○ LOW
Rate ratio with active control								
12	randomised trials	serious ^b	serious ^c	not serious	not serious	none	Rate ratio 0.61 (0.42 to 0.89)	⊕⊕○○ LOW

RBT: Reactive balance training; CI: Confidence interval; RR: Risk ratio; a: Shimada et al²⁸ - No concealed allocation, No blinding of participants and therapists, No intention to treat analysis, Possibility of selective reporting; Protas et al²⁹ - No concealed allocation, No blinding of participants, No intention to treat analysis, Possibility of selective reporting; Pai et al³⁵ - No concealed allocation, No blinding of participants and therapists, No intention to treat analysis; b: Shimada et al²⁸ - No concealed allocation, No blinding of participants and therapists, No intention to treat analysis, Possibility of selective reporting; c: I²>30%.

Although the methodological and reporting quality of the included studies was good on average, there was a high risk of bias arising from the randomization process, missing outcome data, and bias in measurement of the outcome. Not blinding therapists who deliver interventions could introduce bias in the treatment effects.⁵⁸ However, it is not possible to blind therapists in exercise studies where the therapist delivers the exercise intervention. One study attempted to blind the therapists to aims of the study,³² but the therapists were still aware of the nature and specific details of the intervention. Furthermore, having different therapists provide the two interventions, as was the case for *Smania et al.*,³² may introduce another source of variability between groups (i.e., the therapists may differ in their treatment approaches).

The prevalence of adverse events was higher during RBT compared to control interventions. The between-group difference in adverse events seemed to be greatest for subjective or psychological events, although these data were not statistically analysed due to the low numbers of each type of adverse event. Seven RBT participants reported fear or anxiety related to the perturbations, whereas no control participants reported fear or anxiety related to the control intervention. This finding highlights the need to build trust between the therapist and client to alleviate these anxieties.⁵⁹ Therapists report that, as clients gradually overcome these anxieties with training, RBT can help to build self-efficacy and a sense of achievement.⁵⁹

Findings regarding adverse events should be interpreted with caution. Fifteen studies that met most of our inclusion criteria were not included in the review because they did not monitor adverse events, and six trials that were included in the current review did not monitor adverse events. Therefore, approximately half of RBT trials do not monitor or report adverse events. This is consistent with two other reviews, where only 43 and 44% of exercise interventions reported adverse events.^{60, 61} Even among those trials that did report adverse events, it is possible that not all events were reported; some study authors only report certain types of adverse events or only report adverse events above a certain threshold (e.g., only severe adverse events, or only those events reported by a certain proportion of participants).⁶²⁻⁶⁵ Seven RBT studies that monitored adverse events did not report any; given the known adverse events associated with exercise, it is likely that low or reports of zero adverse events in exercise studies are either due to selective non-reporting or under-reporting of adverse events.

Control interventions may have been less 'intense' than RBT. For example, *Mansfield et al.*⁹ and *Marigold et al.*³⁰ used low intensity activities like stretching or relaxation for the control groups in their studies. In *Okubo et al.*'s⁵³ study, RBT participants completed 120 minutes of training on a trip and slip walkway with 30 trips and slips in 3 sessions, while control participants completed 40 minutes of walking on the same path with no perturbations in 1 session. Likewise, *Shimada et al.*²⁸ and *Lurie et al.*⁴⁶ assigned 'usual care' to the control groups while conducting RBT in addition to 'usual care' for the experimental groups. Since the control interventions were often less challenging than RBT, with either lower dose of therapy or no intervention, the effect size estimate for RBT on fall risk could be inflated. Furthermore, the lower intensity or duration of control interventions compared to RBT could, in part, explain the increased prevalence of adverse events during RBT compared to control interventions. Future RBT studies should take steps to include clinically meaningful control interventions that are comparable to the experimental intervention while investigating the effect of RBT on fall risk.⁶⁶ In addition, it is necessary to follow best practices for adverse event reporting to learn about both the risks and benefits of RBT for people with balance impairments.⁶⁷

Limitations

We noted asymmetry in the funnel plots generated to determine the presence of biases in meta-analysis of fall risk and rate. However, we were not able to confirm whether the asymmetry in the funnel plots was due to publication bias. Funnel plots determine whether studies with lower precision (e.g., higher standard error) differ from studies with higher precision (lower standard error).⁶⁸ The standard error was the highest in the study by *Halvarsson et al.*³⁴ compared to the 12 other studies included in the

meta-analysis of risk of falls. In this study,³⁴ participants performed ‘typical’ balance exercises with a focus on maintaining balance, and also experienced external perturbations; which were provided by the instructor or partner. The authors did not report the prescribed intensity of the perturbations.³⁴ This could have been a major factor (clinical heterogeneity) influencing the effect of RBT on the risk of falls in daily life.⁶⁹ Because of the above-mentioned factor and since none of the tests available for publication bias have been compared against a gold standard,⁷⁰ we were not able to assess publication bias in our study. Therefore, our confidence in the estimate of the reduction in the risk and rate of falls with RBT is ‘low’ to support a recommendation. Further research that addresses the limitations highlighted in this study is likely to change the estimate.

We were unable to confirm the prevalence of adverse events for six studies. From our correspondence with study authors, we noted that several studies did not report mild and/or expected adverse events associated with exercise in the publication. It is possible that most of the minor intervention-related adverse events, such as muscle or joint pain, were reported in the following session (i.e., the participants are asked "how did you feel after the last session?"); therefore, there is a lack of certainty about adverse events for studies with only one session or without longer term intervention. Such under-reporting of adverse events could have biased our results.

Conclusions

Older adults and individuals with balance impairments had a lower likelihood of falls in daily life after participating in RBT compared to control interventions. The certainty of evidence was ‘low’ to ‘moderate’ due to a lack of concealed allocation, a lack of blinding procedures, a possibility of selective outcome reporting, and an incomplete outcome data due to attrition, indicating the need for studies with a lower risk of bias. Participants of RBT reported more adverse events than control groups; however, the prevalence of adverse events for both RBT and control groups is likely underestimated as only about half of RBT studies monitored adverse events.

REFERENCES

1. Rubenstein LZ. Falls in older people: epidemiology, risk factors and strategies for prevention. *Age and ageing*. 2006; 35: ii37-ii41.
2. Burns ER, Stevens JA and Lee R. The direct costs of fatal and non-fatal falls among older adults - United States. *Journal of safety research*. 2016; 58: 99-103.
3. Sherrington C, Fairhall N, Kwok W, et al. Evidence on physical activity and falls prevention for people aged 65+ years: systematic review to inform the WHO guidelines on physical activity and sedentary behaviour. *International Journal of Behavioral Nutrition and Physical Activity*. 2020; 17: 144.
4. Berg K, Wood-Dauphine S, Williams J and Gayton D. Measuring balance in the elderly: preliminary development of an instrument. *Physiotherapy Canada*. 1989; 41: 304-11.
5. Maki BE and McIlroy WE. Postural Control in the Older Adult. *Clinics in Geriatric Medicine*. 1996; 12: 635-58.
6. Okubo Y, Schoene D, Caetano MJD, et al. Stepping impairment and falls in older adults: A systematic review and meta-analysis of volitional and reactive step tests. *Ageing Research Reviews*. 2021; 66: 101238.
7. Mansfield A, Wong JS, Bryce J, Knorr S and Patterson KK. Does perturbation-based balance training prevent falls? Systematic review and meta-analysis of preliminary randomized controlled trials. *Physical Therapy*. 2015; 95: 700-9.
8. Mansfield A, Aquni A, Danells CJ, et al. Does perturbation-based balance training prevent falls among individuals with chronic stroke? A randomised controlled trial. *BMJ open*. 2018; 8: e021510.

9. Mansfield A, Peters AL, Liu BA and Maki BE. Effect of a perturbation-based balance training program on compensatory stepping and grasping reactions in older adults: a randomized controlled trial. *Physical therapy*. 2010; 90: 476-91.
10. Wang Y, Wang S, Bolton R, Kaur T and Bhatt T. Effects of task-specific obstacle-induced trip-perturbation training: proactive and reactive adaptation to reduce fall-risk in community-dwelling older adults. *Aging clinical and experimental research*. 2020; 32: 893-905.
11. Gutenbrunner C and Nugraha B. Decision-making in evidence-based practice in Rehabilitation Medicine: proposing a fourth factor. *American Journal of Physical Medicine & Rehabilitation*. 2020; 99: 436-40.
12. Booth A, Clarke M, Gherzi D, Moher D, Petticrew M and Stewart L. An international registry of systematic-review protocols. *Lancet (London, England)*. 2010; 377: 108-9.
13. Higgins JP, Thomas J, Chandler J, et al. *Cochrane handbook for systematic reviews of interventions*. John Wiley & Sons, 2019.
14. Liberati A, Altman DG, Tetzlaff J, et al. The PRISMA statement for reporting systematic reviews and meta-analyses of studies that evaluate health care interventions: explanation and elaboration. *Journal of clinical epidemiology*. 2009; 62: e1-e34.
15. Maher CG, Sherrington C, Herbert RD, Moseley AM and Elkins M. Reliability of the PEDro Scale for Rating Quality of Randomized Controlled Trials. *Physical Therapy*. 2003; 83: 713-21.
16. Maher CG. A systematic review of workplace interventions to prevent low back pain. *Australian Journal of Physiotherapy*. 2000; 46: 259-69.
17. Higgins JP, Altman DG, Gøtzsche PC, et al. The Cochrane Collaboration's tool for assessing risk of bias in randomised trials. *BMJ*. 2011; 343.
18. Sterne JAC, Savović J, Page MJ, et al. RoB 2: a revised tool for assessing risk of bias in randomised trials. *BMJ*. 2019; 366: 14898.
19. Higgins JPT, Thompson SG, Deeks JJ and Altman DG. Measuring inconsistency in meta-analyses. *BMJ*. 2003; 327: 557-60.
20. Sterne JA, Sutton AJ, Ioannidis JP, et al. Recommendations for examining and interpreting funnel plot asymmetry in meta-analyses of randomised controlled trials. *Bmj*. 2011; 343.
21. Egger M, Smith GD, Schneider M and Minder C. Bias in meta-analysis detected by a simple, graphical test. *BMJ*. 1997; 315: 629-34.
22. Guyatt G, Oxman AD, Akl EA, et al. GRADE guidelines: 1. Introduction—GRADE evidence profiles and summary of findings tables. *Journal of Clinical Epidemiology*. 2011; 64: 383-94.
23. Schünemann HJ, Cuello C, Akl EA, et al. GRADE guidelines: 18. How ROBINS-I and other tools to assess risk of bias in nonrandomized studies should be used to rate the certainty of a body of evidence. *Journal of Clinical Epidemiology*. 2019; 111: 105-14.
24. Zhang Y, Alonso-Coello P, Guyatt GH, et al. GRADE Guidelines: 19. Assessing the certainty of evidence in the importance of outcomes or values and preferences—Risk of bias and indirectness. *Journal of Clinical Epidemiology*. 2019; 111: 94-104.
25. Zhang Y, Coello PA, Guyatt GH, et al. GRADE guidelines: 20. Assessing the certainty of evidence in the importance of outcomes or values and preferences—inconsistency, imprecision, and other domains. *Journal of Clinical Epidemiology*. 2019; 111: 83-93.
26. Schünemann H, Brożek J, Guyatt G and Oxman A. Handbook for grading the quality of evidence and the strength of recommendations using the GRADE approach. *Updated October*. 2013; 2013.
27. Toole T, Hirsch M, Forkink A, Lehman D and Maitland C. The effects of a balance and strength training program on equilibrium in Parkinsonism: A preliminary study. *NeuroRehabilitation*. 2000; 14: 165-74.

28. Shimada H, Obuchi S, Furuna T and Suzuki T. New intervention program for preventing falls among frail elderly people: the effects of perturbed walking exercise using a bilateral separated treadmill. *American journal of physical medicine & rehabilitation*. 2004; 83: 493-9.
29. Protas EJ, Mitchell K, Williams A, Qureshy H, Caroline K and Lai EC. Gait and step training to reduce falls in Parkinson's disease. *NeuroRehabilitation*. 2005; 20: 183-90.
30. Marigold DS, Eng JJ, Dawson AS, Inglis JT, Harris JE and Gylfadottir S. Exercise leads to faster postural reflexes, improved balance and mobility, and fewer falls in older persons with chronic stroke. *Journal of the American Geriatrics Society*. 2005; 53: 416-23.
31. Maki BE, Cheng KC-C, Mansfield A, et al. Preventing falls in older adults: new interventions to promote more effective change-in-support balance reactions. *Journal of electromyography and kinesiology*. 2008; 18: 243-54.
32. Smania N, Corato E, Tinazzi M, et al. Effect of balance training on postural instability in patients with idiopathic Parkinson's disease. *Neurorehabilitation and neural repair*. 2010; 24: 826-34.
33. Parijat P and Lockhart TE. Effects of moveable platform training in preventing slip-induced falls in older adults. *Annals of biomedical engineering*. 2012; 40: 1111-21.
34. Halvarsson A, Franzén E, Farén E, Olsson E, Oddsson L and Ståhle A. Long-term effects of new progressive group balance training for elderly people with increased risk of falling—a randomized controlled trial. *Clinical rehabilitation*. 2013; 27: 450-8.
35. Pai Y-C, Bhatt T, Yang F, Wang E and Kritchevsky S. Perturbation training can reduce community-dwelling older adults' annual fall risk: a randomized controlled trial. *Journals of Gerontology Series A: Biomedical Sciences and Medical Sciences*. 2014; 69: 1586-94.
36. Morgan P, Murphy A, Opheim A, Pogrebnoy D, Kravtsov S and McGinley J. The safety and feasibility of an intervention to improve balance dysfunction in ambulant adults with cerebral palsy: a pilot randomized controlled trial. *Clinical rehabilitation*. 2015; 29: 907-19.
37. Schlenstedt C, Paschen S, Kruse A, Raethjen J, Weisser B and Deuschl G. Resistance versus balance training to improve postural control in Parkinson's disease: a randomized rater blinded controlled study. *PloS one*. 2015; 10: e0140584.
38. Shen X and Mak MK. Technology-assisted balance and gait training reduces falls in patients with Parkinson's disease: a randomized controlled trial with 12-month follow-up. *Neurorehabilitation and neural repair*. 2015; 29: 103-11.
39. Kumar C and Pathan N. Effectiveness of manual perturbation exercises in improving balance, function and mobility in stroke patients: a randomized controlled trial. *J Nov Physiother*. 2016; 6: 2.
40. Gandolfi M, Geroin C, Dimitrova E, et al. Virtual reality telerehabilitation for postural instability in Parkinson's disease: a multicenter, single-blind, randomized, controlled trial. *BioMed research international*. 2017; 2017.
41. Steib S, Klamroth S, Gaßner H, et al. Perturbation during treadmill training improves dynamic balance and gait in Parkinson's disease: a single-blind randomized controlled pilot trial. *Neurorehabilitation and neural repair*. 2017; 31: 758-68.
42. Aviles J, Allin LJ, Alexander NB, Van Mullekom J, Nussbaum MA and Madigan ML. Comparison of treadmill trip-like training versus Tai Chi to improve reactive balance among independent older adult residents of senior housing: a pilot controlled trial. *The Journals of Gerontology: Series A*. 2019; 74: 1497-503.
43. Handelzalts S, Kenner-Furman M, Gray G, Soroker N, Shani G and Melzer I. Effects of perturbation-based balance training in subacute persons with stroke: a randomized controlled trial. *Neurorehabilitation and neural repair*. 2019; 33: 213-24.
44. Okubo Y, Sturnieks DL, Brodie MA, Duran L and Lord SR. Effect of reactive balance training involving repeated slips and trips on balance recovery among older adults: a blinded randomized controlled trial. *The Journals of Gerontology: Series A*. 2019; 74: 1489-96.

45. Esmaeili V, Juneau A, Dyer J-O, et al. Intense and unpredictable perturbations during gait training improve dynamic balance abilities in chronic hemiparetic individuals: a randomized controlled pilot trial. *Journal of neuroengineering and rehabilitation*. 2020; 17: 1-13.
46. Lurie JD, Zagaria AB, Ellis L, et al. Surface perturbation training to prevent falls in older adults: a highly pragmatic, randomized controlled trial. *Physical therapy*. 2020; 100: 1153-62.
47. Rieger M, Papegaaij S, Pijnappels M, Steenbrink F and van Dieën J. Transfer and retention effects of gait training with anterior-posterior perturbations to postural responses after medio-lateral gait perturbations in older adults. *Clinical Biomechanics*. 2020; 75: 104988.
48. Unger J, Chan K, Lee JW, et al. The Effect of Perturbation-Based Balance Training and Conventional Intensive Balance Training on Reactive Stepping Ability in Individuals With Incomplete Spinal Cord Injury or Disease: A Randomized Clinical Trial. *Frontiers in Neurology*. 2021; 12: 49.
49. Page MJ, Moher D, Bossuyt PM, et al. PRISMA 2020 explanation and elaboration: updated guidance and exemplars for reporting systematic reviews. *BMJ*. 2021; 372: n160.
50. Rosenblatt NJ, Marone J and Grabiner MD. Preventing trip related falls by community-dwelling adults: a prospective study. *Journal of the American Geriatrics Society*. 2013; 61: 1629-31.
51. Lurie JD, Zagaria AB, Pidgeon DM, Forman JL and Spratt KF. Pilot comparative effectiveness study of surface perturbation treadmill training to prevent falls in older adults. *BMC geriatrics*. 2013; 13: 1-8.
52. Kurz I, Gimmon Y, Shapiro A, Debi R, Snir Y and Melzer I. Unexpected perturbations training improves balance control and voluntary stepping times in older adults-a double blind randomized control trial. *BMC geriatrics*. 2016; 16: 1-11.
53. Okubo Y, Schoene D and Lord SR. Step training improves reaction time, gait and balance and reduces falls in older people: a systematic review and meta-analysis. *British journal of sports medicine*. 2017; 51: 586.
54. Henry FM. Specificity vs generality in learning motor skills. *Proc Coll Phys Educ Assoc*. 1958; 61: 126-8.
55. Farlie MK, Robins L, Keating JL, Molloy E and Haines TP. Intensity of challenge to the balance system is not reported in the prescription of balance exercises in randomised trials: a systematic review. *Journal of physiotherapy*. 2013; 59: 227-35.
56. Halvarsson A, Oddsson L, Olsson E, Farén E, Pettersson A and Ståhle A. Effects of new, individually adjusted, progressive balance group training for elderly people with fear of falling and tend to fall: a randomized controlled trial. *Clin Rehabil*. 2011; 25: 1021-31.
57. Hauptmann B, Reinhart E, Brandt SA and Karni A. The predictive value of the leveling off of within session performance for procedural memory consolidation. *Cognitive Brain Research*. 2005; 24: 181-9.
58. Armijo-Olivo S, Fuentes J, da Costa BR, Saltaji H, Ha C and Cummings GG. Blinding in Physical Therapy Trials and Its Association with Treatment Effects: A Meta-epidemiological Study. *American Journal of Physical Medicine & Rehabilitation*. 2017; 96: 34-44.
59. Jagroop D, Houvardas S, Danells CJ, et al. Rehabilitation clinicians' perspectives of reactive balance training. *medRxiv*. 2021.
60. James KA, von Heideken J and Iversen MD. Reporting of adverse events in randomized controlled trials of therapeutic exercise for hip osteoarthritis: a systematic review. *Physical Therapy*. 2021; 101.
61. von Heideken J, Chowdhry S, Borg J, James K and Iversen MD. Reporting of harm in randomized controlled trials of therapeutic exercise for knee osteoarthritis: a systematic review. *Physical Therapy*. 2021; 101.
62. Liu C-j and Latham N. Adverse events reported in progressive resistance strength training trials in older adults: 2 sides of a coin. *Archives of physical medicine and rehabilitation*. 2010; 91: 1471-3.

63. Bernhardt J, Langhorne P, Lindley RI, et al. Efficacy and safety of very early mobilisation within 24 h of stroke onset (AVERT): a randomised controlled trial. *Lancet*. 2015; 386: 46-55.
64. Patterson KK, Wong JS, Prout EC and Brooks D. Dance for the rehabilitation of balance and gait in adults with neurological conditions other than Parkinson's disease: a systematic review. *Heliyon*. 2018; 4: e00584.
65. Sivendran S, Latif A, McBride RB, et al. Adverse event reporting in cancer clinical trial publications. *Journal of clinical Oncology*. 2014; 32: 83-9.
66. Dobkin BH. Confounders in rehabilitation trials of task-oriented training: lessons from the designs of the EXCITE and SCILT multicenter trials. *Neurorehabil Neural Repair*. 2007; 21: 3-13.
67. World Health O. World alliance for patient safety: WHO draft guidelines for adverse event reporting and learning systems: from information to action. Geneva: World Health Organization, 2005.
68. Lau J, Ioannidis JPA, Terrin N, Schmid CH and Olkin I. The case of the misleading funnel plot. *BMJ*. 2006; 333: 597-600.
69. Gagnier JJ, Morgenstern H, Altman DG, et al. Consensus-based recommendations for investigating clinical heterogeneity in systematic reviews. *BMC Medical Research Methodology*. 2013; 13: 106.
70. Rothstein HR, Sutton AJ and Borenstein M. *Publication bias in meta-analysis: Prevention, assessment and adjustments*. John Wiley & Sons, 2006.

Appendix A: Sample search strategy (Ovid MEDLINE)

- 1 (perturb* adj3 (train* or rehab* or exercis*).tw,kf. (354)
- 2 (platform* adj2 (train* or rehab* or exercis*).tw,kf. (554)
- 3 (surface translation? adj2 (train* or rehab* or exercis*).tw,kf. (1)
- 4 ("dynamic balanc*" adj4 (train* or rehab* or exercis*).tw,kf. (203)
- 5 ("dynamic stabil*" adj4 (train* or rehab* or exercis*).tw,kf. (45)
- 6 ("reactive balanc*" adj4 (train* or rehab* or exercis*).tw,kf. (32)
- 7 ((slip? or slipping) adj2 (train* or rehab* or exercis*).tw,kf. (45)
- 8 ((trip? or tripping) adj2 (train* or rehab* or exercis*).tw,kf. (53)
- 9 1 or 2 or 3 or 4 or 5 or 6 or 7 or 8 (1222)
- 10 ((step? or stepping) adj4 (train* or rehab* or exercis*).tw,kf. (3211)
- 11 (gait adj4 (train* or rehab* or exercis*).tw,kf. (3529)
- 12 ((walk? or walking) adj4 (train* or rehab* or exercis*).tw,kf. (5868)
- 13 (locomot* adj4 (train* or rehab* or exercis*).tw,kf. (1271)
- 14 (balanc* adj4 (train* or rehab* or exercis*).tw,kf. (5701)
- 15 (stabil* adj4 (train* or rehab* or exercis*).tw,kf. (2422)
- 16 (agil* adj4 (train* or rehab* or exercis*).tw,kf. (260)
- 17 10 or 11 or 12 or 13 or 14 or 15 or 16 (20144)
- 18 perturb*.tw,kf. (111319)
- 19 platform*.tw,kf. (167742)
- 20 surface translation?.tw,kf. (163)
- 21 destabil*.tw,kf. (34912)
- 22 compensat*.tw,kf. (160601)
- 23 react*.tw,kf. (1835834)
- 24 dynamic balanc*.tw,kf. (3340)
- 25 dynamic stabil*.tw,kf. (2075)
- 26 18 or 19 or 20 or 21 or 22 or 23 or 24 or 25 (2266570)
- 27 17 and 26 (2676)
- 28 9 or 27 (3490)
- 29 randomized controlled trial.pt. (516491)
- 30 controlled clinical trial.pt. (93915)
- 31 random*.ab. (1136957)
- 32 placebo.ab. (212267)
- 33 trial.ab. (526103)
- 34 groups.ab. (2111952)
- 35 29 or 30 or 31 or 32 or 33 or 34 (3271056)
- 36 exp animals/ not humans.sh. (4753439)
- 37 35 not 36 (2799327)
- 38 28 and 37 (1498)
- 39 limit 38 to english language (1464)

Appendix B: List of all records used for included studies

Toole 2000 (Trial registration: not reported)

- Toole T, Hirsch MA, Forkink A, Lehman DA, Maitland CG. The effects of a balance and strength training program on equilibrium in Parkinsonism: a preliminary study. *Neurorehabilitation*. 2000;14(3):165-174. (main publication)

Shimada 2004 (Trial registration: not reported)

- Shimada H, Obuchi S, Furuna T, Suzuki T. New intervention program for preventing falls among frail elderly people: the effects of perturbed walking exercise using a bilateral separated treadmill. *Am J Phys Med Rehabil*. 2004;83(7):493-499. (main publication)

Marigold 2005 (Trial registration: Not reported)

- Marigold DS, Eng JJ, Dawson AS, Inglis JT, Harris JE, Gylfadottir S. Exercise leads to faster postural reflexes, improved balance and mobility, and fewer falls in older persons with chronic stroke. *J Am Geriatr Soc*. 2005;53(3):416-423. (main publication)

Protas 2005 (Trial registration: not reported)

- Protas EJ, Mitchell K, Williams A, Qureshy H, Caroline K, Lai EC. Gait and step training to reduce falls in Parkinson's disease. *Neurorehabilitation*. 2005;20(3):183-190. (main publication)

Maki 2008 (Trial registration: not reported)

- Maki BE, Cheng KCC, Mansfield A, et al. Preventing falls in older adults: new interventions to promote more effective change-in-support balance reactions. *J Electromyogr Kinesiol*. 2008;18(2):243-254. (main publication)

Mansfield 2010 (Trial registration: NCT00187317)

- Mansfield A, Peters AL, Liu BA, Maki BE. Effect of a perturbation-based balance training program on compensatory stepping and grasping reactions in older adults: a randomized controlled trial. *Phys Ther*. 2010;90(4):476-491. (main publication)
- Mansfield A, Peters AL, Liu BA, Maki BE. A perturbation-based balance training program for older adults: study protocol for a randomised controlled trial. *BMC Geriatr*. 2007;7:12. (protocol)
- Mansfield A. Development and evaluation of a perturbation-based balance-training program for older adults. Dissertation/ thesis. 2007;216. (secondary publication)

Smania 2010 (Trial registration: not reported)

- Smania N, Corato E, Tinazzi M, et al. Effect of balance training on postural instability in patients with idiopathic Parkinson's disease. *Neurorehabil Neural Repair*. 2010;24(9):826-834. (main publication)

Parijat 2012 (Trial registration: not reported)

- Parijat P, Lockhart TE. Effects of moveable platform training in preventing slip-induced falls in older adults. *Ann Biomed Eng*. 2012;40(5):1111-1121. (main publication)

Halvarsson 2013 (Trial registration: not reported)

- Halvarsson A, Franzén E, Farén E, Olsson E, Oddsson L, Ståhle A. Long-term effects of new progressive group balance training for elderly people with increased risk of falling - a randomized controlled trial. *Clin Rehabil*. 2013;27(5):450-458. (main publication)
- Halvarsson A, Oddsson L, Olsson E, Faren E, Pettersson A, Stahle A. Effects of new, individually adjusted, progressive balance group training for elderly people with fear of falling and tend to fall: a randomized controlled trial. *Clin Rehabil*. 2011;25(11):1021-1031. (secondary publication)

Pai 2014 (Trial registration: not reported)

- Pai YC, Bhatt T, Yang F, Wang E. Perturbation training can reduce community-dwelling older adults' annual fall risk: a randomized controlled trial. *J Gerontol A Biol Sci Med Sci*. 2014;69(12):1586-1594. (main publication)

Morgan 2015 (Trial registration: ACTRN12613000166774)

- Morgan P, Murphy A, Opheim A. The safety and feasibility of an intervention to improve balance dysfunction in ambulant adults with cerebral palsy: a pilot randomized controlled trial. *Clin Rehabil*. 2015;29(9):907-919. (main publication)

Schlenstedt 2015 (Trial registration: NCT02253563)

- Schlenstedt C, Paschen S, Kruse A, Raethjen J, Weisser B, Deuschl G. Resistance versus balance training to improve postural control in Parkinson's disease: a randomized rater blinded controlled study. *PLoS ONE*. 2015;10(10):e0140584. (main publication)

Shen 2015 (Trial registration: not reported)

- Shen X, Mak MKY. Technology-assisted balance and gait training reduces falls in patients with Parkinson's disease: a randomized controlled trial with 12-month follow-up. *Neurorehabil Neural Repair*. 2015;29(2):103-111. (main publication)
- Shen X, Mak MKY. Balance and gait training with augmented feedback improves balance confidence in people with Parkinson's disease: a randomized controlled trial. *Neurorehabil Neural Repair*. 2014;28(6):524-535. (secondary publication)

Kumar 2016 (Trial registration: not reported)

- Kumar C, Pathan N. Effectiveness of manual perturbation exercises in improving balance, function and mobility in stroke patients: a randomized controlled trial. *J Nov Physiother*. 2016;6:2 (main publication)

Kurz 2016 (Trial registration: NCT01439451)

- Kurz I, Gimmon Y, Shapiro A, Debi R, Snir Y, Melzer I. Unexpected perturbations training improves balance control and voluntary stepping times in older adults - a double blind randomized control trial. *BMC Geriatr*. 2016;16:58. (main publication)
- Gimmon Y, Riemer R, Kurz I, Shapiro A, Debbi R, Melzer I. Perturbation exercises during treadmill walking improve pelvic and trunk motion in older adults: a randomized control trial. *Arch Gerontol Geriatr*. 2018;75:132-138. (secondary publication)

Gandolfi 2017 (Trial registration: not reported)

- Gandolfi M, Geroin C, Dimitrova E, et al. Virtual reality telerehabilitation for postural instability in Parkinson's disease: a multicenter, single-blind, randomized, controlled trial. *BioMed Research International*. 2017(7962826) (main publication)

Steib 2017 (Trial registration: NCT01856244)

- Steib S, Klamroth S, Gassner H, et al. Perturbation during treadmill training improves dynamic balance and gait in Parkinson's disease: a single-blind randomized controlled pilot trial. *Neurorehabil Neural Repair*. 2017;31(8):758-768. (main publication)
- Pasluosta CF, Steib S, Klamroth S, et al. Acute Neuromuscular adaptations in the postural control of patients with Parkinson's disease after perturbed walking. *Front Aging Neurosci*. 2017;9:316. (secondary publication)
- Klamroth S, Gasner H, Winkler J, et al. Interindividual balance adaptations in response to perturbation treadmill training in persons with Parkinson disease. *J Neurol Phys Ther*. 2019;43(4):224-232. (secondary publication)
- Steib S, Klamroth S, Gasner H, et al. Exploring gait adaptations to perturbed and conventional treadmill training in Parkinson's disease: time-course, sustainability, and transfer. *Hum Mov Sci*. 2019;64:123-132. (secondary publication)
- Klamroth S, Steib S, Gasner H, et al. Immediate effects of perturbation treadmill training on gait and postural control in patients with Parkinson's disease. *Gait Posture*. 2016;50:102-108. (secondary publication)
- Gassner H, Steib S, Klamroth S, et al. Perturbation treadmill training improves clinical rating of the motor symptoms gait and postural stability, and sensor-based gait parameters in parkinson's disease. *Gait Posture*. 2017;57:345-346. (secondary publication)
- Gassner H, Steib S, Klamroth S, et al. Perturbation treadmill training improves clinical characteristics of gait and balance in Parkinson's disease. *J Parkinsons Dis*. 2019;9(2):413-426. (secondary publication)

Mansfield 2018 (Trial registration: ISRCTN05434601)

- Mansfield A, Aqui A, Danells CJ, et al. Does perturbation-based balance training prevent falls among individuals with chronic stroke? A randomised controlled trial. *BMJ Open*. 2018;8(8):e021510. (main publication)
- Mansfield A, Aqui A, Centen A, et al. Perturbation training to promote safe independent mobility post-stroke: study protocol for a randomized controlled trial. *BMC Neurol*. 2015;15:87. (protocol)
- Schinkel-Ivy A, Huntley AH, Aqui A, Mansfield A. Does perturbation-based balance training improve control of reactive stepping in individuals with chronic stroke? *J Stroke Cerebrovasc Dis*. 2019;28(4):935-943. (secondary publication)

Aviles 2019 (Trial registration: Not reported)

- Aviles J, Allin LJ, Alexander NB, Van Mullekom J, Nussbaum MA, Madigan ML. Comparison of treadmill trip-like training versus Tai Chi to improve reactive balance among independent older adult residents of senior housing: a pilot controlled trial. *J Gerontol A Biol Sci Med Sci*. 2019;74(9):1497-1503. (main publication)

Handelzalts 2019 (Trial registration: NCT02619175)

- Handelzalts S, Kenner-Furman M, Gray G, Soroker N, Shani G, Melzer I. Effects of perturbation-based balance training in subacute persons with stroke: a randomized controlled trial. *Neurorehabil Neural Repair*. 2019;33(3):213-224. (main publication)

Okubo 2019 (Trial registration: ACTRN12617000564358)

- Okubo Y, Sturnieks DL, Brodie MA, Duran L, Lord SR. Effect of reactive balance training involving repeated slips and trips on balance recovery among older adults: a blinded randomized controlled trial. *J Gerontol A Biol Sci Med Sci.* 2019;74(9):1489-1496. (main publication)

Esmaeili 2020 (Trial registration: NCT04314830)

- Esmaeili V, Juneau A, Dyer JO, et al. Intense and unpredictable perturbations during gait training improve dynamic balance abilities in chronic hemiparetic individuals: a randomized controlled pilot trial. *J Neuroeng Rehabil.* 2020;17(1):79. (main publication)

Lurie 2020 (Trial registration: NCT01006967)

- Lurie JD, Zagaria AB, Ellis L, et al. Surface perturbation training to prevent falls in older adults: a highly pragmatic, randomized controlled trial. *Phys Ther.* 2020;100(7):1153-1162. (main publication)
- Lurie JD, Zagaria AB, Pidgeon DM, Forman JL, Spratt KF. Pilot comparative effectiveness study of surface perturbation treadmill training to prevent falls in older adults. *BMC Geriatr.* 2013;13:49. (internal pilot study)

Rieger 2020 (Trial registration: not reported)

- Rieger MM, Papegaaij S, Pijnappels M, Steenbrink F, van Dieen JH. Transfer and retention effects of gait training with anterior-posterior perturbations to postural responses after medio-lateral gait perturbations in older adults. *Clin Biomech.* 2020;75:104988 (main publication)

Unger 2021 (Trial registration: NCT02960178)

- Unger J, Chan K, Lee JW, et al. The effect of perturbation-based balance training and conventional intensive balance training on reactive stepping ability in individuals with incomplete spinal cord injury or disease: a randomized clinical trial. *Front Neurol.* 2021;12:620367. (main publication)
- Unger J, Chan K, Scovil CY, et al. Intensive balance training for adults with incomplete spinal cord injuries: protocol for an assessor-blinded randomized clinical trial. *Phys Ther.* 2019;99(4):420-427. (protocol)