

## SUPPLEMENTARY FILE

### Members of the Meta-Analysis of Glucose and Insulin-related traits Consortium (MAGIC)

Ji Chen<sup>1,2</sup>, Cassandra N. Spracklen<sup>3,4</sup>, Gaëlle Marenne<sup>2,5</sup>, Arushi Varshney<sup>6</sup>, Laura J Corbin<sup>7,8</sup>, Jian'an Luan<sup>9</sup>, Sara M Willems<sup>9</sup>, Ying Wu<sup>3</sup>, Xiaoshuai Zhang<sup>9,10</sup>, Momoko Horikoshi<sup>11,12,13</sup>, Thibaud S Boutin<sup>14</sup>, Reedik Mägi<sup>15</sup>, Johannes Waage<sup>16</sup>, Ruifang Li-Gao<sup>17</sup>, Kei Hang Katie Chan<sup>18,19,20</sup>, Jie Yao<sup>21</sup>, Mila D Anasanti<sup>22</sup>, Audrey Y Chu<sup>23</sup>, Annique Claringbould<sup>24</sup>, Jani Heikkinen<sup>22</sup>, Jaeyoung Hong<sup>25</sup>, Jouke-Jan Hottenga<sup>26,27</sup>, Shaofeng Huo<sup>28</sup>, Marika A. Kaakinen<sup>29,22</sup>, Tin Louie<sup>30</sup>, Winfried März<sup>31,32,33</sup>, Hortensia Moreno-Macias<sup>34</sup>, Anne Ndungu<sup>12</sup>, Sarah C. Nelson<sup>30</sup>, Ilja M. Nolte<sup>35</sup>, Kari E North<sup>36</sup>, Chelsea K. Raulerson<sup>3</sup>, Debashree Ray<sup>37</sup>, Rebecca Rohde<sup>36</sup>, Denis Rybin<sup>25</sup>, Claudia Schurmann<sup>38,39</sup>, Xueling Sim<sup>40,41,42</sup>, Loz Southam<sup>2</sup>, Isobel D Stewart<sup>9</sup>, Carol A. Wang<sup>43</sup>, Yujie Wang<sup>36</sup>, Peitao Wu<sup>25</sup>, Weihua Zhang<sup>44,45</sup>, Tarunveer S. Ahluwalia<sup>16,46,47</sup>, Emil VR Appel<sup>48</sup>, Lawrence F. Bielak<sup>49</sup>, Jennifer A. Brody<sup>50</sup>, Noël P Burti<sup>51</sup>, Claudia P Cabrera<sup>52,53</sup>, Brian E Cade<sup>54,55</sup>, Jin Fang Chai<sup>40</sup>, Xiaoran Chai<sup>56,57</sup>, Li-Ching Chang<sup>58</sup>, Chien-Hsiun Chen<sup>58</sup>, Brian H Chen<sup>59</sup>, Kumaraswamy Naidu Chitrala<sup>60</sup>, Yen-Feng Chiu<sup>61</sup>, Hugoline G. de Haan<sup>17</sup>, Graciela E Delgado<sup>33</sup>, Ayse Demirkan<sup>62,29</sup>, Qing Duan<sup>3,63</sup>, Jorgen Engmann<sup>64</sup>, Segun A Fatumo<sup>65,66,67</sup>, Javier Gayán<sup>68</sup>, Franco Giulianini<sup>69</sup>, Jung Ho Gong<sup>18</sup>, Stefan Gustafsson<sup>70</sup>, Yang Hai<sup>71</sup>, Fernando P Hartwig<sup>72,7</sup>, Jing He<sup>73</sup>, Yoriko Heianza<sup>74</sup>, Tao Huang<sup>75</sup>, Alicia Huerta-Chagoya<sup>76,77</sup>, Mi Yeong Hwang<sup>78</sup>, Richard A. Jensen<sup>50</sup>, Takahisa Kawaguchi<sup>79</sup>, Katherine A Kentistou<sup>80,81</sup>, Young Jin Kim<sup>78</sup>, Marcus E Kleber<sup>33</sup>, Ishminder K Kooner<sup>45</sup>, Shuiqing Lai<sup>18</sup>, Leslie A Lange<sup>82</sup>, Carl D Langefeld<sup>83</sup>, Marie Lauzon<sup>21</sup>, Man Li<sup>84</sup>, Symen Ligthart<sup>62</sup>, Jun Liu<sup>62,85</sup>, Marie Loh<sup>86,44</sup>, Jirong Long<sup>87</sup>, Valeriya Lyssenko<sup>88,89</sup>, Massimo Mangino<sup>90,91</sup>, Carola Marzi<sup>92,93</sup>, May E Montasser<sup>94</sup>, Abhishek Nag<sup>12</sup>, Masahiro Nakatochi<sup>95</sup>, Damia Noce<sup>96</sup>, Raymond Noordam<sup>97</sup>, Giorgio Pistis<sup>98</sup>, Michael Preuss<sup>38,99</sup>, Laura Raffield<sup>3</sup>, Laura J. Rasmussen-Torvik<sup>100</sup>, Stephen S Rich<sup>101,102</sup>, Neil R Robertson<sup>11,12</sup>, Rico Rueedi<sup>103,104</sup>, Kathleen Ryan<sup>94</sup>, Serena Sanna<sup>98,24</sup>, Richa Saxena<sup>105,106,107</sup>, Katharina E Schraut<sup>80,81</sup>, Bengt Sennblad<sup>108</sup>, Kazuya Setoh<sup>79</sup>, Albert V Smith<sup>109,110</sup>, Lorraine Southam<sup>111,112</sup>, Thomas Sparso<sup>48</sup>, Rona J Strawbridge<sup>113,114</sup>, Fumihiko Takeuchi<sup>115</sup>, Jingyi Tan<sup>21</sup>, Stella Trompet<sup>97,116</sup>, Erik van den Akker<sup>117,118,119</sup>, Peter J van der Most<sup>35</sup>, Niek Verweij<sup>120,121</sup>, Mandy Vogel<sup>122</sup>, Heming Wang<sup>54,55</sup>, Chaolong Wang<sup>123,124</sup>, Nan Wang<sup>125,126</sup>, Helen R Warren<sup>52,53</sup>, Wanqing Wen<sup>87</sup>, Tom Wilsgaard<sup>127</sup>, Andrew Wong<sup>128</sup>, Andrew R Wood<sup>1</sup>, Tian Xie<sup>35</sup>, Mohammad Hadi Zafarmand<sup>129,130</sup>, Jing-Hua Zhao<sup>131</sup>, Wei Zhao<sup>49</sup>, Najaf Amin<sup>62,85</sup>, Zorayr Arzumanyan<sup>21</sup>, Arne Astrup<sup>132</sup>, Stephan JL Bakker<sup>133</sup>, Damiano Baldassarre<sup>134,135</sup>, Marian Beekman<sup>117</sup>, Richard N Bergman<sup>136</sup>, Alain Bertoni<sup>137</sup>, Matthias Blüher<sup>138</sup>, Lori L. Bonnycastle<sup>139</sup>, Stefan R Bornstein<sup>140</sup>, Donald W Bowden<sup>141</sup>, Qiuyin Cai<sup>73</sup>, Archie Campbell<sup>142,143</sup>, Harry Campbell<sup>80</sup>, Yi Cheng Chang<sup>144,145,146</sup>, Eco J.C. de Geus<sup>26,27</sup>, Abbas Dehghan<sup>62</sup>, Shufa Du<sup>147</sup>, Gudny Eiriksdottir<sup>110</sup>, Alike Eleni Farmaki<sup>148,149</sup>, Mattias Frånberg<sup>150</sup>, Christian Fuchsberger<sup>96</sup>, Yutang Gao<sup>151</sup>, Anette P Gjesing<sup>48</sup>, Anuj Goel<sup>152,12</sup>, Sohee Han<sup>78</sup>, Catharina A Hartman<sup>153</sup>, Christian Herder<sup>154,155,156</sup>, Andrew A. Hicks<sup>96</sup>, Chang-Hsun Hsieh<sup>157,158</sup>, Willa A. Hsueh<sup>159</sup>, Sahoko Ichihara<sup>160</sup>, Michiya Igase<sup>161</sup>, M. Arfan Ikram<sup>62</sup>, W. Craig Johnson<sup>30</sup>, Marit E Jørgensen<sup>46,162</sup>, Peter K Joshi<sup>80</sup>, Rita R Kalyani<sup>163</sup>, Fouad R. Kandeel<sup>164</sup>, Tomohiro Katsuya<sup>165,166</sup>, Chiea Chuen Khor<sup>124</sup>, Wieland Kiess<sup>122</sup>, Ivana Kolcic<sup>167</sup>, Teemu Kuulasmaa<sup>168</sup>, Johanna Kuusisto<sup>169</sup>, Kristi Läll<sup>15</sup>, Kelvin Lam<sup>21</sup>, Deborah A Lawlor<sup>170,8</sup>, Nanette R. Lee<sup>171,172</sup>, Rozenn N. Lemaitre<sup>50</sup>, Honglan Li<sup>173</sup>, Shih-Yi Lin<sup>174,175,176</sup>, Jaana Lindström<sup>177</sup>, Allan Linneberg<sup>178,179</sup>, Jianjun Liu<sup>124,180</sup>, Carlos Lorenzo<sup>181</sup>, Tatsuaki Matsubara<sup>182</sup>, Fumihiko Matsuda<sup>79</sup>, Geltrude Mingrone<sup>183</sup>, Simon Mooijaart<sup>97</sup>, Sanghoon Moon<sup>78</sup>, Toru Nabika<sup>184</sup>, Girish N. Nadkarni<sup>38</sup>, Jerry L. Nadler<sup>185</sup>, Mari Nelis<sup>15</sup>, Matt J Neville<sup>11,186</sup>, Jill M Norris<sup>187</sup>, Yasumasa Ohayagi<sup>188</sup>, Annette Peters<sup>189,93,190</sup>, Patricia A. Peyser<sup>49</sup>, Ozren Polasek<sup>167,191</sup>, Qibin Qi<sup>192</sup>, Dennis Raven<sup>153</sup>, Dermot F Reilly<sup>193</sup>, Alex Reiner<sup>194</sup>, Fernando Rivideneira<sup>195</sup>, Kathryn Roll<sup>21</sup>, Igor Rudan<sup>196</sup>, Charumathi Sabanayagam<sup>56,197</sup>, Kevin Sandow<sup>21</sup>, Naveed Sattar<sup>198</sup>, Annette Schürmann<sup>199,200</sup>, Jinxiu Shi<sup>201</sup>, Heather M Stringham<sup>42,41</sup>, Kent D. Taylor<sup>21</sup>, Tanya M. Teslovich<sup>202</sup>, Betina Thuesen<sup>178</sup>, Paul RHJ Timmers<sup>80,203</sup>, Elena Tremoli<sup>135</sup>, Michael Y Tsai<sup>204</sup>, Andre Uitterlinden<sup>195</sup>, Rob M van Dam<sup>40,180,205</sup>, Diana van Heemst<sup>97</sup>, Astrid van Hylckama Vlieg<sup>17</sup>, Jana V Van Vliet-Ostaptchouk<sup>35</sup>, Jagadish Vangipurapu<sup>206</sup>, Henrik Vestergaard<sup>48,207</sup>, Tao Wang<sup>192</sup>, Ko Willems van Dijk<sup>208,209,210</sup>, Tatijana Zemunik<sup>211</sup>, Goncalo R Abecasis<sup>42</sup>, Linda S. Adair<sup>147,212</sup>, Carlos Alberto Aguilar-Salinas<sup>213,214,215</sup>, Marta E Alarcón-Riquelme<sup>216,217</sup>, Ping An<sup>218</sup>, Larissa Aviles-Santa<sup>219</sup>, Diane M Becker<sup>220</sup>, Lawrence J Beilin<sup>221</sup>, Sven Bergmann<sup>103,104,222</sup>, Hans Bisgaard<sup>16</sup>, Corri Black<sup>223</sup>, Michael Boehnke<sup>42,41</sup>, Eric Boerwinkle<sup>224,225</sup>, Bernhard O Böhm<sup>226,227</sup>, Klaus Bønnelykke<sup>16</sup>, D I. Boomsma<sup>26,27</sup>, Erwin P. Bottinger<sup>38,228,229</sup>, Thomas A Buchanan<sup>230,231,126</sup>, Mickaël Canoui<sup>232,233</sup>, Mark J Caulfield<sup>152,53</sup>, John C. Chambers<sup>86,44,45,234,235</sup>, Daniel I. Chasman<sup>69,236</sup>, Yii-Der Ida Chen<sup>21</sup>, Ching-Yu Cheng<sup>56,197</sup>, Francis S. Collins<sup>139</sup>, Adolfo Correa<sup>237</sup>, Francesco Cucca<sup>98</sup>, H. Janaka de Silva<sup>238</sup>,

George Dedoussis<sup>239</sup>, Sölve Elmståhl<sup>240</sup>, Michele K. Evans<sup>241</sup>, Ele Ferrannini<sup>242</sup>, Luigi Ferrucci<sup>243</sup>, Jose C Florez<sup>244,245,107</sup>, Paul W Franks<sup>89,246</sup>, Timothy M Frayling<sup>1</sup>, Philippe Froguel<sup>232,233,247</sup>, Bruna Gigante<sup>248</sup>, Mark O. Goodarzi<sup>249</sup>, Penny Gordon-Larsen<sup>147,212</sup>, Harald Grallert<sup>92,93</sup>, Niels Grarup<sup>48</sup>, Sameline Grimsgaard<sup>127</sup>, Leif Groop<sup>250,251</sup>, Vilmundur Gudnason<sup>110,252</sup>, Xiuqing Guo<sup>21</sup>, Anders Hamsten<sup>114</sup>, Torben Hansen<sup>48</sup>, Caroline Hayward<sup>203</sup>, Susan R. Heckbert<sup>253</sup>, Bernardo L Horta<sup>72</sup>, Wei Huang<sup>201</sup>, Erik Ingelsson<sup>254</sup>, Pankow S James<sup>255</sup>, Marjo-Ritta Jarvelin<sup>256,257,258,259</sup>, Jost B Jonas<sup>260,261,262</sup>, J. Wouter Jukema<sup>116,263</sup>, Pontiano Kaleebu<sup>264</sup>, Robert Kaplan<sup>192,194</sup>, Sharon L.R. Kardia<sup>49</sup>, Norihiro Kato<sup>115</sup>, Sirkka M. Keinanen-Kiukaanniemi<sup>265,266</sup>, Bong-Jo Kim<sup>78</sup>, Mika Kivimaki<sup>267</sup>, Heikki A. Koistinen<sup>268,269,270</sup>, Jaspal S. Kooner<sup>45,234,235,271</sup>, Antje Körner<sup>122</sup>, Peter Kovacs<sup>138,272</sup>, Diana Kuh<sup>128</sup>, Meena Kumari<sup>273</sup>, Zoltan Kutalik<sup>274,104</sup>, Markku Laakso<sup>169</sup>, Timo A. Lakka<sup>275,276,277</sup>, Lenore J Launer<sup>60</sup>, Karin Leander<sup>278</sup>, Huaixing Li<sup>28</sup>, Xu Lin<sup>28</sup>, Lars Lind<sup>279</sup>, Cecilia Lindgren<sup>12,280,281</sup>, Simin Liu<sup>18</sup>, Ruth J.F. Loos<sup>38,99</sup>, Patrik KE Magnusson<sup>282</sup>, Anubha Mahajan<sup>12</sup>, Andres Metspalu<sup>15</sup>, Dennis O Mook-Kanamori<sup>17,283</sup>, Trevor A Mori<sup>221</sup>, Patricia B Munroe<sup>52,53</sup>, Inger Njølstad<sup>127</sup>, Jeffrey R O'Connell<sup>94</sup>, Albertine J Oldehinkel<sup>153</sup>, Ken K Ong<sup>9</sup>, Sandosh Padmanabhan<sup>284</sup>, Colin N.A. Palmer<sup>285</sup>, Nicholette D Palmer<sup>141</sup>, Oluf Pedersen<sup>48</sup>, Craig E Pennell<sup>43</sup>, David J Porteous<sup>142,286</sup>, Peter P. Pramstaller<sup>96</sup>, Michael A. Province<sup>218</sup>, Bruce M. Psaty<sup>50,253,287</sup>, Lu Qi<sup>288</sup>, Leslie J. Raffle<sup>289</sup>, Rainer Rauramaa<sup>277</sup>, Susan Redline<sup>54,55</sup>, Paul M Ridker<sup>69,290</sup>, Frits R. Rosendaal<sup>17</sup>, Timo E. Saaristo<sup>291,292</sup>, Manjinder Sandhu<sup>293</sup>, Jouko Saramies<sup>294</sup>, Neil Schneiderman<sup>295</sup>, Peter Schwarz<sup>140,296,200</sup>, Laura J. Scott<sup>42,41</sup>, Elizabeth Selvin<sup>37</sup>, Peter Sever<sup>271</sup>, Xiao-ou Shu<sup>87</sup>, P Eline Slagboom<sup>117</sup>, Kerrin S Small<sup>90</sup>, Blair H Smith<sup>297</sup>, Harold Snieder<sup>35</sup>, Tamar Sofer<sup>298,245</sup>, Thorkild I.A. Sørensen<sup>48,299,7,8</sup>, Tim D Spector<sup>90</sup>, Alice Stanton<sup>300</sup>, Claire J Steves<sup>90,301</sup>, Michael Stumvoll<sup>138</sup>, Liang Sun<sup>28</sup>, Yasuharu Tabara<sup>79</sup>, E Shyong Tai<sup>180,40,302</sup>, Nicholas J Timpson<sup>7,8</sup>, Anke Tönjes<sup>138</sup>, Jaakko Tuomilehto<sup>303,304,305</sup>, Teresa Tusie<sup>77,306</sup>, Matti Uusitupa<sup>307</sup>, Pim van der Harst<sup>120,24</sup>, Cornelia van Duijn<sup>85,62</sup>, Veronique Vitart<sup>203</sup>, Peter Vollenweider<sup>308</sup>, Tanja GM Vrijkotte<sup>129</sup>, Lynne E Wagenknecht<sup>309</sup>, Mark Walker<sup>310</sup>, Ya X Wang<sup>261</sup>, Nick J Wareham<sup>9</sup>, Richard M Watanabe<sup>125,231,126</sup>, Hugh Watkins<sup>152,12</sup>, Wen B Wei<sup>311</sup>, Ananda R Wickremasinghe<sup>312</sup>, Gonneke Willemsen<sup>26,27</sup>, James F Wilson<sup>80,203</sup>, Tien-Yin Wong<sup>56,197</sup>, Jer-Yuarn Wu<sup>58</sup>, Anny H Xiang<sup>313</sup>, Lisa R Yanek<sup>220</sup>, Loic Yengo<sup>314</sup>, Mitsuhiro Yokota<sup>315</sup>, Eleftheria Zeggini<sup>111,316,317</sup>, Wei Zheng<sup>87</sup>, Alan B Zonderman<sup>60</sup>, Jerome I Rotter<sup>21</sup>, Anna L Gloyn<sup>11,12,186,318</sup>, Mark I. McCarthy<sup>11,319,186,12</sup>, Josée Dupuis<sup>25</sup>, James B Meigs<sup>320,245,107</sup>, Robert A Scott<sup>9</sup>, Inga Prokopenko<sup>29,22</sup>, Aaron Leong<sup>321,322,236</sup>, Ching-Ti Liu<sup>25</sup>, Stephen CJ Parker<sup>6,323#</sup>, Karen L. Mohlke<sup>3</sup>, Claudia Langenberg<sup>9</sup>, Eleanor Wheeler<sup>2,9</sup>, Andrew P. Morris<sup>324,325,326,12</sup>, Inês Barroso<sup>1,2,9,327</sup> and the Meta-Analysis of Glucose and Insulin-related Traits Consortium (MAGIC)\*

<sup>1</sup>Exeter Centre of Excellence for Diabetes Research (ExCEED), Genetics of Complex Traits, University of Exeter Medical School, University of Exeter, Exeter, UK, <sup>2</sup>Department of Human Genetics, Wellcome Sanger Institute, Hinxton, Cambridge, UK, <sup>3</sup>Department of Genetics, University of North Carolina, Chapel Hill, NC, USA, <sup>4</sup>Department of Biostatistics and Epidemiology, University of Massachusetts, Amherst, MA, USA, <sup>5</sup>Inserm, Univ Brest, EFS, UMR 1078, GGB, Brest, France, <sup>6</sup>Department of Computational Medicine and Bioinformatics, University of Michigan, Ann Arbor, MI, USA, <sup>7</sup>MRC Integrative Epidemiology Unit, University of Bristol, Bristol, UK, <sup>8</sup>Department of Population Health Sciences, Bristol Medical School, University of Bristol, Bristol, UK, <sup>9</sup>MRC Epidemiology Unit, Institute of Metabolic Science, University of Cambridge, Cambridge, UK, <sup>10</sup>Department of Biostatistics, School of Public Health, Shandong University, Jinan, Shandong, China, <sup>11</sup>Oxford Centre for Diabetes, Endocrinology and Metabolism, Radcliffe Department of Medicine, University of Oxford, Oxford, UK, <sup>12</sup>Wellcome Centre for Human Genetics, University of Oxford, Oxford, UK, <sup>13</sup>Laboratory for Genomics of Diabetes and Metabolism, RIKEN Centre for Integrative Medical Sciences, Yokohama, Japan, <sup>14</sup>Medical Research Council Human Genetics Unit, Institute for Genetics and Molecular Medicine, Edinburgh, UK, <sup>15</sup>Estonian Genome Center, Institute of Genomics, University of Tartu, Tartu, Estonia, <sup>16</sup>COPSAC, Copenhagen Prospective Studies on Asthma in Childhood, Herlev and Gentofte Hospital, University of Copenhagen, Copenhagen, Denmark, <sup>17</sup>Department of Clinical Epidemiology, Leiden University Medical Center, Leiden, The Netherlands, <sup>18</sup>Department of Epidemiology, Brown University School of Public Health, Brown University, Providence, RI, USA, <sup>19</sup>Department of Biomedical Sciences, City University of Hong Kong, Hong Kong SAR, China, <sup>20</sup>Department of Electrical Engineering, City University of Hong Kong, Hong Kong SAR, China, <sup>21</sup>The Institute for Translational Genomics and Population Sciences, Department of Pediatrics, The Lundquist Institute for Biomedical Innovation at Harbor-UCLA Medical Center, Torrance, CA, USA, <sup>22</sup>Department of Metabolism, Digestion, and Reproduction, Imperial College London, London, UK, <sup>23</sup>Division of Preventive Medicine, Brigham and Women's Hospital, Boston, MA,

USA, <sup>24</sup>Department of Genetics, University of Groningen, University Medical Center Groningen, Groningen, The Netherlands, <sup>25</sup>Department of Biostatistics, Boston University School of Public Health, Boston, MA, USA, <sup>26</sup>Department of Biological Psychology, Faculty of Behaviour and Movement Sciences, Vrije Universiteit Amsterdam, Amsterdam, The Netherlands, <sup>27</sup>Amsterdam Public Health Research Institute, Amsterdam Universities Medical Center, Amsterdam, The Netherlands, <sup>28</sup>CAS Key Laboratory of Nutrition, Metabolism and Food Safety, Shanghai Institute of Nutrition and Health, University of Chinese Academy of Sciences, Chinese Academy of Sciences, Shanghai, China, <sup>29</sup>Section of Statistical Multi-omics, Department of Clinical and Experimental Research, University of Surrey, Guildford, Surrey, UK, <sup>30</sup>Department of Biostatistics, University of Washington, Seattle, WA, USA, <sup>31</sup>SYNLAB Academy, SYNLAB Holding Deutschland GmbH, Mannheim, Germany, <sup>32</sup>Clinical Institute of Medical and Chemical Laboratory Diagnostics, Medical University Graz, Graz, Austria, <sup>33</sup>Vth Department of Medicine (Nephrology, Hypertensiology, Rheumatology, Endocrinology, Diabetology), Medical Faculty Mannheim, Heidelberg University, Mannheim, Baden-Württemberg, Germany, <sup>34</sup>Department of Economics, Metropolitan Autonomous University, Mexico City, Mexico, <sup>35</sup>Department of Epidemiology, University of Groningen, University Medical Center Groningen, Groningen, The Netherlands, <sup>36</sup>CVD Genetic Epidemiology Computational Laboratory, Gillings School of Global Public Health, University of North Carolina, Chapel Hill, NC, USA, <sup>37</sup>Department of Epidemiology, Johns Hopkins Bloomberg School of Public Health, Baltimore, MD, USA, <sup>38</sup>The Charles Bronfman Institute for Personalized Medicine, Icahn School of Medicine at Mount Sinai, New York, NY, USA, <sup>39</sup>HPI Digital Health Center, Digital Health and Personalized Medicine, Hasso Plattner Institute, Potsdam, Germany, <sup>40</sup>Saw Swee Hock School of Public Health, National University of Singapore and National University Health System, Singapore, Singapore, <sup>41</sup>Center for Statistical Genetics, University of Michigan, Ann Arbor, MI, USA, <sup>42</sup>Department of Biostatistics, School of Public Health, University of Michigan, Ann Arbor, MI, USA, <sup>43</sup>School of Medicine and Public Health, College of Health, Medicine and Wellbeing, The University of Newcastle, Newcastle, NSW, Australia, <sup>44</sup>Department of Epidemiology and Biostatistics, Imperial College London, London, UK, <sup>45</sup>Department of Cardiology, Ealing Hospital, London North West Healthcare NHS Trust, Middlesex, UK, <sup>46</sup>Steno Diabetes Center Copenhagen, Gentofte, Denmark, <sup>47</sup>The Bioinformatics Centre, Department of Biology, University of Copenhagen, Copenhagen, Denmark, <sup>48</sup>Novo Nordisk Foundation Center for Basic Metabolic Research, Faculty of Health and Medical Sciences, University of Copenhagen, Copenhagen, Denmark, <sup>49</sup>Department of Epidemiology, School of Public Health, University of Michigan, Ann Arbor, MI, USA, <sup>50</sup>Department of Medicine, Cardiovascular Health Research Unit, University of Washington, Seattle, WA, USA, <sup>51</sup>Metabolism Program, Program in Medical and Population Genetics, Broad Institute, Cambridge, MA, USA, <sup>52</sup>Department of Clinical Pharmacology, William Harvey Research Institute, Barts and The London School of Medicine and Dentistry, Queen Mary University of London, London, UK, <sup>53</sup>NIHR Barts Cardiovascular Biomedical Research Centre, Queen Mary University of London, London, UK, <sup>54</sup>Department of Medicine, Sleep and Circadian Disorders, Brigham and Women's Hospital, Boston, MA, USA, <sup>55</sup>Department of Medicine, Sleep Medicine, Harvard Medical School, Boston, MA, USA, <sup>56</sup>Ocular Epidemiology, Singapore Eye Research Institute, Singapore National Eye Centre, Singapore, Singapore, <sup>57</sup>Department of Ophthalmology, National University of Singapore and National University Health System, Singapore, Singapore, <sup>58</sup>Institute of Biomedical Sciences, Academia Sinica, Taipei, Taiwan, Taiwan, <sup>59</sup>Department of Epidemiology, The Herbert Wertheim School of Public Health and Human Longevity Science, UC San Diego, La Jolla, CA, USA, <sup>60</sup>Laboratory of Epidemiology and Population Sciences, National Institute on Aging, National Institutes of Health, Baltimore, MD, USA, <sup>61</sup>Institute of Population Health Sciences, National Health Research Institutes, Miaoli, Taiwan, <sup>62</sup>Department of Epidemiology, Erasmus Medical Center, Rotterdam, The Netherlands, <sup>63</sup>Department of Statistics, University of North Carolina at Chapel Hill, Chapel Hill, NC, USA, <sup>64</sup>Institute of Cardiovascular Science, UCL, London, UK, <sup>65</sup>Uganda Medical Informatics Centre (UMIC), MRC/UVRI and London School of Hygiene & Tropical Medicine (Uganda Research Unit), Entebbe, Uganda, <sup>66</sup>London School of Hygiene & Tropical Medicine, London, UK, <sup>67</sup>H3Africa Bioinformatics Network (H3ABioNet) Node, Centre for Genomics Research and Innovation, NABDA/FMST, Abuja, Nigeria, <sup>68</sup>Bioinfosol, Sevilla, Spain, <sup>69</sup>Division of Preventive Medicine, Brigham and Women's Hospital, Boston, MA, USA, <sup>70</sup>Department of Medical Sciences, Molecular Epidemiology and Science for Life Laboratory, Uppsala University, Uppsala, Sweden, <sup>71</sup>Department of Statistics, The University of Auckland, Science Center, Auckland, New Zealand, <sup>72</sup>Postgraduate Program in Epidemiology, Federal University of Pelotas, Pelotas, RS, Brazil, <sup>73</sup>Department of Medicine, Epidemiology, Vanderbilt University Medical Center, Nashville, TN, USA, <sup>74</sup>Department of Epidemiology, Tulane University Obesity Research Center, Tulane University, New Orleans, USA, <sup>75</sup>Department of Epidemiology and Biostatistics,

School of Public Health, Peking University, Beijing, China, <sup>76</sup>Molecular Biology and Genomic Medicine Unit, National Council for Science and Technology, Mexico City, Mexico, <sup>77</sup>Molecular Biology and Genomic Medicine Unit, National Institute of Medical Sciences and Nutrition, Mexico City, Mexico, <sup>78</sup>Division of Genome Science, Department of Precision Medicine, National Institute of Health, Cheongju-si, Chungcheongbuk-do, South Korea, <sup>79</sup>Center for Genomic Medicine, Kyoto University Graduate School of Medicine, Kyoto, Japan, <sup>80</sup>Centre for Global Health Research, Usher Institute, University of Edinburgh, Edinburgh, Scotland, <sup>81</sup>Centre for Cardiovascular Sciences, Queen's Medical Research Institute, University of Edinburgh, Edinburgh, Scotland, <sup>82</sup>Department of Medicine, Division of Biomedical Informatics and Personalized Medicine, University of Colorado Anschutz Medical Campus, Denver, CO, USA, <sup>83</sup>Department of Biostatistics and Data Science, Wake Forest School of Medicine, Winston-Salem, NC, USA, <sup>84</sup>Department of Medicine, Division of Nephrology and Hypertension, University of Utah, Salt Lake City, UT, USA, <sup>85</sup>Nuffield Department of Population Health, University of Oxford, Oxford, UK, <sup>86</sup>Lee Kong Chian School of Medicine, Nanyang Technological University, Singapore, Singapore, <sup>87</sup>Division of Epidemiology, Department of Medicine, Vanderbilt Epidemiology Center, Vanderbilt University Medical Center, Nashville, TN, USA, <sup>88</sup>Department of Clinical Science, Center for Diabetes Research, University of Bergen, Bergen, Norway, <sup>89</sup>Department of Clinical Sciences, Lund University Diabetes Centre, Lund University, Malmo, Sweden, <sup>90</sup>Department of Twin Research and Genetic Epidemiology, School of Life Course Sciences, King's College London, London, UK, <sup>91</sup>NIHR Biomedical Research Centre, Guy's and St Thomas' Foundation Trust, London, UK, <sup>92</sup>Institute of Epidemiology, Research Unit of Molecular Epidemiology, Helmholtz Zentrum München Research Center for Environmental Health, Neuherberg, Bavaria, Germany, <sup>93</sup>German Center for Diabetes Research (DZD), Neuherberg, Bavaria, Germany, <sup>94</sup>Department of Medicine, Division of Endocrinology, Diabetes, and Nutrition, University of Maryland School of Medicine, Baltimore, MD, USA, <sup>95</sup>Public Health Informatics Unit, Department of Integrated Sciences, Nagoya University Graduate School of Medicine, Nagoya, Japan, <sup>96</sup>Institute for Biomedicine, Eurac Research, Bolzano, BZ, Italy, <sup>97</sup>Department of Internal Medicine, Section of Gerontology and Geriatrics, Leiden University Medical Center, Leiden, The Netherlands, <sup>98</sup>Istituto di Ricerca Genetica e Biomedica (IRGB), Consiglio Nazionale delle Ricerche (CNR), Monserrato, Italy, <sup>99</sup>The Mindich Child Health and Development Institute for Personalized Medicine, Icahn School of Medicine at Mount Sinai, New York, NY, USA, <sup>100</sup>Department of Preventive Medicine, Northwestern University Feinberg School of Medicine, Chicago, IL, USA, <sup>101</sup>Center for Public Health Genomics, University of Virginia, Charlottesville, VA, USA, <sup>102</sup>Department of Public Health Sciences, University of Virginia, Charlottesville, VA, USA, <sup>103</sup>Department of Computational Biology, University of Lausanne, Lausanne, Switzerland, <sup>104</sup>Swiss Institute of Bioinformatics, Lausanne, Switzerland, <sup>105</sup>Center for Genomic Medicine, Massachusetts General Hospital, Harvard Medical School, Boston, MA, USA, <sup>106</sup>Department of Anesthesia, Critical Care and Pain Medicine, Massachusetts General Hospital, Boston, MA, USA, <sup>107</sup>Program in Medical and Population Genetics, Broad Institute, Cambridge, MA, USA, <sup>108</sup>Department of Cell and Molecular Biology, National Bioinformatics Infrastructure Sweden, Science for Life Laboratory, Uppsala University, Uppsala, Sweden, <sup>109</sup>Department of Biostatistics, University of Michigan, Ann Arbor, MI, USA, <sup>110</sup>Icelandic Heart Association, Kopavogur, Iceland, <sup>111</sup>Institute of Translational Genomics, Helmholtz Zentrum München – German Research Center for Environmental Health, Neuherberg, Germany, <sup>112</sup>Wellcome Sanger Institute, Hinxton, Cambridge, UK, <sup>113</sup>Institute of Health and Wellbeing, University of Glasgow, Glasgow, Glasgow, UK, <sup>114</sup>Department of Medicine Solna, Cardiovascular medicine, Karolinska Institutet, Stockholm, Sweden, <sup>115</sup>National Center for Global Health and Medicine, Tokyo, Japan, <sup>116</sup>Department of Cardiology, Leiden University Medical Center, Leiden, The Netherlands, <sup>117</sup>Department of Biomedical Data Sciences, Molecular Epidemiology, Leiden University Medical Center, Leiden, The Netherlands, <sup>118</sup>Department of Pattern Recognition & Bioinformatics, Delft University of Technology, Delft, The Netherlands, <sup>119</sup>Department of Biomedical Data Sciences, Leiden Computational Biology Center, Leiden University Medical Center, Leiden, The Netherlands, <sup>120</sup>Department of Cardiology, University of Groningen, University Medical Center Groningen, Groningen, The Netherlands, <sup>121</sup>Genomics plc, Oxford, UK, <sup>122</sup>Center of Pediatric Research, University Children's Hospital Leipzig, University of Leipzig Medical Center, Leipzig, Germany, <sup>123</sup>Department of Epidemiology and Biostatistics, School of Public Health, Tongji Medical College, Huazhong University of Science and Technology, Wuhan, China, <sup>124</sup>Genome Institute of Singapore, Agency for Science, Technology and Research, Singapore, Singapore, <sup>125</sup>Department of Preventive Medicine, Keck School of Medicine of USC, Los Angeles, CA, USA, <sup>126</sup>USC Diabetes and Obesity Research Institute, Keck School of Medicine of USC, Los Angeles, CA, USA, <sup>127</sup>Department of Community Medicine, Faculty of Health Sciences, UIT the Arctic University of Norway, Tromsø, Norway, <sup>128</sup>MRC Unit for

Lifelong Health & Ageing at UCL, London, UK, <sup>129</sup>Department of Public Health, Amsterdam Public Health Research Institute, Amsterdam Universities Medical Center, Amsterdam, The Netherlands, <sup>130</sup>Department of Clinical Epidemiology, Biostatistics, and Bioinformatics, Amsterdam Public Health Research Institute, Amsterdam Universities Medical Center, Amsterdam, The Netherlands, <sup>131</sup>Department of Public Health and Primary Care, School of Clinical Medicine, University of Cambridge, Cambridge, UK, <sup>132</sup>Department of Nutrition, Exercise, and Sports, Faculty of Science, University of Copenhagen, Copenhagen, Denmark, <sup>133</sup>Department of Internal Medicine, University of Groningen, University Medical Center Groningen, Groningen, The Netherlands, <sup>134</sup>Department of Medical Biotechnology and Translational Medicine, University of Milan, Milan, Italy, <sup>135</sup>Centro Cardiologico Monzino, IRCCS, Milan, Italy, <sup>136</sup>Diabetes and Obesity Research Institute, Cedars-Sinai Medical Center, Los Angeles, CA, USA, <sup>137</sup>Department of Epidemiology and Prevention, Division of Public Health Sciences, Wake Forest School of Medicine, Winston-Salem, NC, USA, <sup>138</sup>Medical Department III – Endocrinology, Nephrology, Rheumatology, University of Leipzig Medical Center, Leipzig, Germany, <sup>139</sup>Medical Genomics and Metabolic Genetics Branch, National Human Genome Research Institute, National Institutes of Health, Bethesda, MD, USA, <sup>140</sup>Department for Prevention and Care of Diabetes, Faculty of Medicine Carl Gustav Carus, Technische Universität Dresden, Dresden, Germany, <sup>141</sup>Department of Biochemistry, Wake Forest School of Medicine, Winston-Salem, NC, USA, <sup>142</sup>Centre for Genomic and Experimental Medicine, Institute of Genetics & Molecular Medicine, University of Edinburgh, Western General Hospital, Edinburgh, UK, <sup>143</sup>Usher Institute, University of Edinburgh, Edinburgh, UK, <sup>144</sup>Department of Internal Medicine, National Taiwan University Hospital, Taipei, Taiwan, <sup>145</sup>Graduate Institute of Medical Genomics and Proteomics, National Taiwan University, Taipei, Taiwan, <sup>146</sup>Institute of Biomedical Sciences, Academia Sinica, Taipei, Taiwan, <sup>147</sup>Department of Nutrition, Gillings School of Global Public Health, University of North Carolina, Chapel Hill, NC, USA, <sup>148</sup>Department of Population Science and Experimental Medicine, Institute of Cardiovascular Science, University College London, London, UK, <sup>149</sup>Department of Nutrition and Dietetics, School of Health Science and Education, Harokopio University of Athens, Athens, Greece, <sup>150</sup>Department of Medicine Solna, Cardiovascular medicine, Stockholm, Sweden, <sup>151</sup>Department of Epidemiology, Shanghai Cancer Institute, Shanghai, China, <sup>152</sup>Division of Cardiovascular Medicine, Radcliffe Department of Medicine, University of Oxford, Oxford, UK, <sup>153</sup>Department of Psychiatry, Interdisciplinary Center Psychopathology and Emotion Regulation, University of Groningen, University Medical Center Groningen, Groningen, The Netherlands, <sup>154</sup>Institute for Clinical Diabetology, German Diabetes Center, Leibniz Center for Diabetes Research at Heinrich Heine University Düsseldorf, Düsseldorf, Germany, <sup>155</sup>Division of Endocrinology and Diabetology, Medical Faculty, Heinrich Heine University Düsseldorf, Düsseldorf, Germany, <sup>156</sup>German Center for Diabetes Research (DZD), Düsseldorf, Germany, <sup>157</sup>Internal Medicine, Endocrine & Metabolism, Tri-Service General Hospital, Taipei, Taiwan, <sup>158</sup>School of Medicine, National Defense Medical Center, Taipei, Taiwan, <sup>159</sup>Internal Medicine, Endocrinology, Diabetes & Metabolism, Diabetes and Metabolism Research Center, The Ohio State University Wexner Medical Center, Columbus, OH, USA, <sup>160</sup>Department of Environmental and Preventive Medicine, Jichi Medical University School of Medicine, Shimotsuke, Japan, <sup>161</sup>Department of Anti-aging Medicine, Ehime University Graduate School of Medicine, Toon, Japan, <sup>162</sup>National Institute of Public Health, University of Southern Denmark, Odense, Denmark, <sup>163</sup>Department of Medicine, Endocrinology, Diabetes & Metabolism, Johns Hopkins University School of Medicine, Baltimore, MD, USA, <sup>164</sup>Clinical Diabetes, Endocrinology & Metabolism, Translational Research & Cellular Therapeutics, Beckman Research Institute of the City of Hope, Duarte, CA, USA, <sup>165</sup>Department of Clinical Gene Therapy, Osaka University Graduate School of Medicine, Suita, Japan, <sup>166</sup>Department of Geriatric and General Medicine, Osaka University Graduate School of Medicine, Suita, Japan, <sup>167</sup>Department of Public Health, University of Split School of Medicine, Split, Croatia, <sup>168</sup>Institute of Biomedicine, Bioinformatics Center, University of Eastern Finland, Kuopio, Finland, <sup>169</sup>Department of Medicine, University of Eastern Finland and Kuopio University Hospital, Kuopio, Finland, <sup>170</sup>MRC Integrative Epidemiology Unit, University of Bristol, Bristol, Bristol, UK, <sup>171</sup>USC-Office of Population Studies Foundation, University of San Carlos, Cebu City, Philippines, <sup>172</sup>Department of Anthropology, Sociology and History, University of San Carlos, Cebu City, Philippines, <sup>173</sup>State Key Laboratory of Oncogene and Related Genes & Department of Epidemiology, Shanghai Cancer Institute, Renji Hospital, Shanghai Jiaotong University School of Medicine, Shanghai, China, <sup>174</sup>Internal Medicine, Endocrine & Metabolism, Taichung Veterans General Hospital, Taichung, Taiwan, <sup>175</sup>Center for Geriatrics and Gerontology, Taichung Veterans General Hospital, Taichung, Taiwan, <sup>176</sup>National Defense Medical Center, National Yang-Ming University, Taipei, Taiwan, <sup>177</sup>Diabetes Prevention Unit, National Institute for Health and Welfare, Helsinki, Finland, <sup>178</sup>Center for Clinical Research and Prevention, Bispebjerg and Frederiksberg

Hospital, Copenhagen, Denmark, <sup>179</sup>Department of Clinical Medicine, Faculty of Health and Medical Sciences, University of Copenhagen, Copenhagen, Denmark, <sup>180</sup>Yong Loo Lin School of Medicine, National University of Singapore and National University Health System, Singapore, Singapore, <sup>181</sup>Department of Medicine, University of Texas Health Sciences Center, San Antonio, TX, USA, <sup>182</sup>Department of Internal Medicine, Aichi Gakuin University School of Dentistry, Nagoya, Japan, <sup>183</sup>Department of Diabetes, Diabetes, & Nutritional Sciences, James Black Centre, King's College London, London, UK, <sup>184</sup>Department of Functional Pathology, Shimane University School of Medicine, Izumo, Japan, <sup>185</sup>Department of Medicine and Pharmacology, New York Medical College School of Medicine, Valhalla, NY, USA, <sup>186</sup>Oxford NIHR Biomedical Research Centre, Oxford University Hospitals NHS Foundation Trust, Oxford, UK, <sup>187</sup>Colorado School of Public Health, University of Colorado Anschutz Medical Campus, Aurora, CO, USA, <sup>188</sup>Department of Geriatric Medicine and Neurology, Ehime University Graduate School of Medicine, Toon, Japan, <sup>189</sup>Institute of Epidemiology, Helmholtz Zentrum München Research Center for Environmental Health, Neuherberg, Bavaria, Germany, <sup>190</sup>Institute for Medical Information Processing, Biometry, and Epidemiology, Ludwig-Maximilians University Munich, Munich, Bavaria, Germany, <sup>191</sup>Gen-info Ltd, Zagreb, Croatia, <sup>192</sup>Department of Epidemiology and Population Health, Albert Einstein College of Medicine, Bronx, NY, USA, <sup>193</sup>Genetics and Pharmacogenomics, Merck Sharp & Dohme Corp., Kenilworth, NJ, USA, <sup>194</sup>Department of Public Health Sciences, Fred Hutchinson Cancer Research Center, Seattle, WA, USA, <sup>195</sup>Department of Internal Medicine, Erasmus Medical Center, Rotterdam, The Netherlands, <sup>196</sup>Centre for Global Health, The Usher Institute, University of Edinburgh, Edinburgh, UK, <sup>197</sup>Ophthalmology & Visual Sciences Academic Clinical Program (Eye ACP), Duke-NUS Medical School, Singapore, Singapore, <sup>198</sup>BHF Glasgow Cardiovascular Research Centre, Institute of Cardiovascular and Medical Sciences, University of Glasgow, Glasgow, UK, <sup>199</sup>Department of Experimental Diabetology, German Institute of Human Nutrition Potsdam-Rehbruecke, Nuthetal, Germany, <sup>200</sup>German Center for Diabetes Research (DZD e.V.), Neuherberg, Germany, <sup>201</sup>Department of Genetics, Shanghai-MOST Key Laboratory of Health and Disease Genomics, Chinese National Human Genome Center at Shanghai (CHGC) and Shanghai Academy of Science & Technology (SAST), Shanghai, China, <sup>202</sup>Sarepta Therapeutics, Cambridge, Massachusetts, USA, <sup>203</sup>Medical Research Council Human Genetics Unit, Institute for Genetics and Cancer, University of Edinburgh, Edinburgh, UK, <sup>204</sup>Department of Laboratory Medicine and Pathology, University of Minnesota, Minneapolis, MN, USA, <sup>205</sup>Department of Nutrition, Harvard T.H. Chan School of Public Health, Boston, MA, USA, <sup>206</sup>Institute of Clinical Medicine, Internal Medicine, University of Eastern Finland, Kuopio, Finland, <sup>207</sup>Department of Medicine, Bornholms Hospital, Rønne, Denmark, <sup>208</sup>Department of Internal Medicine, Division of Endocrinology, Leiden University Medical Center, Leiden, The Netherlands, <sup>209</sup>Laboratory for Experimental Vascular Medicine, Leiden University Medical Center, Leiden, The Netherlands, <sup>210</sup>Department of Human Genetics, Leiden University Medical Center, Leiden, The Netherlands, <sup>211</sup>Department of Human Biology, University of Split School of Medicine, Split, Croatia, <sup>212</sup>Carolina Population Center, University of North Carolina, Chapel Hill, NC, USA, <sup>213</sup>Department of Endocrinology and Metabolism, Instituto Nacional de Ciencias Medicas y Nutricion, Mexico City, Mexico, <sup>214</sup>Unidad de Investigación de Enfermedades Metabólicas, Instituto Nacional de Ciencias Médicas y Nutrición and Tec Salud, Mexico City, Mexico, <sup>215</sup>Instituto Tecnológico y de Estudios Superiores de Monterrey Tec Salud, Mexico City, Mexico, <sup>216</sup>Department of Medical Genomics, Pfizer/University of Granada/Andalusian Government Center for Genomics and Oncological Research (GENYO), Granada, Spain, <sup>217</sup>Institute for Environmental Medicine, Chronic Inflammatory Diseases, Karolinska Institutet, Solna, Sweden, <sup>218</sup>Department of Genetics, Division of Statistical Genomics, Washington University School of Medicine, St. Louis, MO, USA, <sup>219</sup>Clinical and Health Services Research, National Institute on Minority Health and Health Disparities, Bethesda, MD, USA, <sup>220</sup>Department of Medicine, General Internal Medicine, Johns Hopkins University School of Medicine, Baltimore, MD, USA, <sup>221</sup>Medical School, Royal Perth Hospital Unit, University of Western Australia, Perth, WA, Australia, <sup>222</sup>Department of Integrative Biomedical Sciences, University of Cape Town, Cape Town, South Africa, <sup>223</sup>Aberdeen Centre for Health Data Science, 1:042 Polwarth Building,, School of Medicine, Medical, Science and Nutrition, University of Aberdeen, Foresterhill, Aberdeen, UK, <sup>224</sup>Human Genetics Center, School of Public Health, The University of Texas Health Science Center at Houston, Houston, TX, USA, <sup>225</sup>Human Genome Sequencing Center, Baylor College of Medicine, Houston, TX, USA, <sup>226</sup>Division of Endocrinology and Diabetes, Graduate School of Molecular Endocrinology and Diabetes, University of Ulm, Ulm, Baden-Württemberg, Germany, <sup>227</sup>LKC School of Medicine, Nanyang Technological University, Singapore and Imperial College London, UK, Singapore, Singapore, <sup>228</sup>Hasso Plattner Institute for Digital Health at Mount Sinai, Icahn School of Medicine at Mount Sinai, New York, NY, USA,

<sup>229</sup>Digital Health Center, Hasso Plattner Institut, University Potsdam, Potsdam, Germany, <sup>230</sup>Department of Medicine, Keck School of Medicine of USC, Los Angeles, CA, USA, <sup>231</sup>Department of Physiology and Neuroscience, Keck School of Medicine of USC, Los Angeles, CA, USA, <sup>232</sup>INSERM UMR 1283 / CNRS UMR 8199, European Institute for Diabetes (EGID), Université de Lille, Lille, France, <sup>233</sup>INSERM UMR 1283 / CNRS UMR 8199, European Institute for Diabetes (EGID), Institut Pasteur de Lille, Lille, France, <sup>234</sup>Imperial College Healthcare NHS Trust, Imperial College London, London, UK, <sup>235</sup>MRC-PHE Centre for Environment and Health, Imperial College London, London, UK, <sup>236</sup>Harvard Medical School, Boston, MA, USA, <sup>237</sup>Department of Medicine, Jackson Heart Study, University of Mississippi Medical Center, Jackson, MS, USA, <sup>238</sup>Department of Medicine, Faculty of Medicine, University of Kelaniya, Ragama, Sri Lanka, <sup>239</sup>Department of Nutrition and Dietetics, School of Health Science and Education, Harokopio University of Athens, Kallithea, Greece, <sup>240</sup>Department of Clinical Sciences, Lund University, Malmö, Sweden, <sup>241</sup>Laboratory of Epidemiology and Population Sciences, National Institute on Aging Intramural Research Program, National Institutes of Health, Baltimore, MD, USA, <sup>242</sup>CNR Institute of Clinical Physiology, Pisa, Italy, <sup>243</sup>Intramural Research Program, National Institute of Aging, Baltimore, MD, USA, <sup>244</sup>Diabetes Unit and Center for Genomic Medicine, Massachusetts General Hospital, Boston, MA, USA, <sup>245</sup>Department of Medicine, Harvard Medical School, Boston, MA, USA, <sup>246</sup>Department of Public Health and Clinical Medicine, Umeå University, Umeå, Sweden, <sup>247</sup>Department of Genomics of Common Disease, Imperial College London, London, UK, <sup>248</sup>Department of Medicine, Cardiovascular medicine, Karolinska Institutet, Stockholm, Sweden, <sup>249</sup>Department of Medicine, Division of Endocrinology, Diabetes & Metabolism, Cedars-Sinai Medical Center, Los Angeles, CA, USA, <sup>250</sup>Diabetes Centre, Lund University, Sweden, <sup>251</sup>Finnish Institute of Molecular Medicine, Helsinki University, Helsinki, Finland, <sup>252</sup>Faculty of Medicine, School of health sciences, University of Iceland, Reykjavik, Iceland, <sup>253</sup>Department of Epidemiology, Cardiovascular Health Research Unit, University of Washington, Seattle, WA, USA, <sup>254</sup>Department of Medicine, Division of Cardiovascular Medicine, Stanford University School of Medicine, Stanford University, Stanford, CA, USA, <sup>255</sup>Division of Epidemiology and Community Health, University of Minnesota, Minneapolis, MN, USA, <sup>256</sup>Department of Epidemiology and Biostatistics, MRC-PHE Centre for Environment and Health, School of Public Health, Imperial College London, London, UK, <sup>257</sup>Center for Life Course Health Research, Faculty of Medicine, University of Oulu, Oulu, Finland, <sup>258</sup>Unit of Primary Health Care, Oulu University Hospital, OYS, Oulu, Finland, <sup>259</sup>Department of Life Sciences, College of Health and Life Sciences, Brunel University London, London, UK, <sup>260</sup>Department of Ophthalmology, Medical Faculty Mannheim, Heidelberg University, Mannheim, Germany, <sup>261</sup>Beijing Institute of Ophthalmology, Beijing Ophthalmology and Visual Science Key Lab, Beijing Tongren Eye Center, Beijing Tongren Hospital, Capital Medical University, Beijing, China, <sup>262</sup>Institute of Molecular and Clinical Ophthalmology Basel IOB, Basel, Switzerland, <sup>263</sup>Netherlands Heart Institute, Utrecht, The Netherlands, <sup>264</sup>MRC/UVRI and LSHTM (Uganda Research Unit), Entebbe, Uganda, <sup>265</sup>Faculty of Medicine, Institute of Health Sciences, University of Oulu, Oulu, Finland, <sup>266</sup>Unit of General Practice, Oulu University Hospital, Oulu, Finland, <sup>267</sup>Department of Epidemiology and Public Health, UCL, London, UK, <sup>268</sup>Department of Public Health Solutions, Finnish Institute for Health and Welfare, Helsinki, Finland, <sup>269</sup>Department of Medicine, University of Helsinki and Helsinki University Central Hospital, Helsinki, Finland, <sup>270</sup>Minerva Foundation Institute for Medical Research, Helsinki, Finland, <sup>271</sup>National Heart and Lung Institute, Imperial College London, London, UK, <sup>272</sup>IFB Adiposity Diseases, University of Leipzig Medical Center, Leipzig, Germany, <sup>273</sup>Institute for Social and Economic Research, University of Essex, Colchester, UK, <sup>274</sup>University Institute of Primary Care and Public Health, Division of Biostatistics, University of Lausanne, Lausanne, Switzerland, <sup>275</sup>Institute of Biomedicine, School of Medicine, University of Eastern Finland, Finland, <sup>276</sup>Department of Clinical Physiology and Nuclear Medicine, Kuopio University Hospital, Kuopio, Finland, <sup>277</sup>Foundation for Research in Health Exercise and Nutrition, Kuopio Research Institute of Exercise Medicine, Kuopio, Finland, <sup>278</sup>Institute of Environmental Medicine, Cardiovascular and Nutritional Epidemiology, Karolinska Institutet, Stockholm, Sweden, <sup>279</sup>Department of Medical Sciences, Uppsala, Sweden, <sup>280</sup>Big Data Institute, Nuffield Department of Medicine, University of Oxford, Oxford, UK, <sup>281</sup>Nuffield Department of Women's and Reproductive Health, University of Oxford, Oxford, UK, <sup>282</sup>Department of Medical Epidemiology and Biostatistics and the Swedish Twin Registry, Karolinska Institutet, Stockholm, Sweden, <sup>283</sup>Department of Public Health and Primary Care, Leiden University Medical Center, Leiden, The Netherlands, <sup>284</sup>Institute of Cardiovascular and Medical Sciences, University of Glasgow, Glasgow, UK, <sup>285</sup>Division of Population Health and Genomics, School of Medicine, University of Dundee, Ninewells Hospital and Medical School, Dundee, UK, <sup>286</sup>Centre for Cognitive Ageing and Cognitive Epidemiology, University of Edinburgh, Edinburgh, UK, <sup>287</sup>Department of Health Services,

Cardiovascular Health Research Unit, University of Washington, Seattle, WA, USA, <sup>288</sup>Department of Epidemiology, Tulane University School of Public Health and Tropical Medicine, New Orleans, LA, USA, <sup>289</sup>Department of Pediatrics, Genetic and Genomic medicine, University of California, Irvine, Irvine, CA, USA, <sup>290</sup>Harvard Medical School, Boston, MA, USA, <sup>291</sup>Tampere, Finnish Diabetes Association, Tampere, Finland, <sup>292</sup>Pirkanmaa Hospital District, Tampere, Finland, <sup>293</sup>Department of Medicine, University of Cambridge, Cambridge, UK, <sup>294</sup>South Karelia Central Hospital, Lappeenranta, Finland, <sup>295</sup>Department of Psychology, University of Miami, Miami, FL, USA, <sup>296</sup>Paul Langerhans Institute Dresden of the Helmholtz Center Munich, University Hospital and Faculty of Medicine, Dresden, Germany, <sup>297</sup>Division of Population Health and Genomics, Ninewells Hospital and Medical School, University of Dundee, Dundee, UK, <sup>298</sup>Division of Sleep and Circadian Disorders, Brigham and Women's Hospital, Boston, MA, USA, <sup>299</sup>Department of Public Health, Section of Epidemiology, Faculty of Health and Medical Sciences, University of Copenhagen, Copenhagen, Denmark, <sup>300</sup>Department of Molecular and Cellular Therapeutics, Royal College of Surgeons in Ireland, Dublin, Ireland, <sup>301</sup>Department of Aging and Health, Guy's and St Thomas' Foundation Trust, London, UK, <sup>302</sup>Cardiovascular and Metabolic Disease Signature Research Program, Duke-NUS Medical School, Singapore, Singapore, <sup>303</sup>Department of Public Health Solutions, National Institute for Health and Welfare, Helsinki, Finland, <sup>304</sup>Department of Public Health, University of Helsinki, Helsinki, Finland, <sup>305</sup>Saudi Diabetes Research Group, King Abdulaziz University, Jeddah, Saudi Arabia, <sup>306</sup>Department of Genomic Medicine and Environmental Toxicology, Instituto de Investigaciones Biomedicas, Universidad Nacional Autonoma de Mexico, Mexico City, Mexico, <sup>307</sup>Department of Public Health and Clinical Nutrition, University of Eastern Finland, Finland, <sup>308</sup>Department of Medicine, Internal Medicine, Lausanne University Hospital (CHUV), Lausanne, Switzerland, <sup>309</sup>Department of Public Health Sciences, Wake Forest School of Medicine, Winston-Salem, NC, USA, <sup>310</sup>Faculty of Medical Sciences, Newcastle University, Newcastle upon Tyne, UK, <sup>311</sup>Beijing Tongren Eye Center, Beijing Key Laboratory of Intraocular Tumor Diagnosis and Treatment, Beijing Ophthalmology & Visual Sciences Key Lab, Beijing Tongren Hospital, Capital Medical University, Beijing, China, China, <sup>312</sup>Department of Public Health, Faculty of Medicine, University of Kelaniya, Ragama, Sri Lanka, <sup>313</sup>Department of Research and Evaluation, Kaiser Permanente of Southern California, Pasadena, CA, USA, <sup>314</sup>Institute for Molecular Bioscience, The University of Queensland, Queensland, Australia, <sup>315</sup>Kurume University School of Medicine, Japan, <sup>316</sup>Wellcome Sanger Institute, Hinxton, UK, <sup>317</sup>TUM School of Medicine, Technical University of Munich and Klinikum Rechts der Isar, Munich, Germany, <sup>318</sup>Department of Pediatrics, Division of Endocrinology, Stanford School of Medicine, Stanford, CA, USA, <sup>319</sup>Wellcome Centre for Human Genetics, Nuffield Department of Medicine, University of Oxford, Oxford, UK, <sup>320</sup>Department of Medicine, Division of General Internal Medicine, Massachusetts General Hospital, Boston, MA, USA, <sup>321</sup>Department of Medicine, General Internal Medicine, Massachusetts General Hospital, Boston, MA, USA, <sup>322</sup>Department of Medicine, Diabetes Unit and Endocrine Unit, Massachusetts General Hospital, Boston, MA, USA, <sup>323</sup>Department of Human Genetics, University of Michigan, Ann Arbor, MI, USA, <sup>324</sup>Centre for Genetics and Genomics Versus Arthritis, Division of Musculoskeletal and Dermatological Sciences, The University of Manchester, Manchester, UK, <sup>325</sup>Centre for Musculoskeletal Research, Division of Musculoskeletal and Dermatological Sciences, The University of Manchester, Manchester, UK, <sup>326</sup>Department of Biostatistics, University of Liverpool, Liverpool, UK, <sup>327</sup>University of Cambridge, Cambridge



## Study Design of SUGAR-MGH

SUGAR-MGH is an NIH-funded pharmacogenetic study in 1,000 adults at three Boston medical centers from 2008-2015. Subjects were enrolled if they had never been on anti-diabetes medications; they could have a family history or personal history of diabetes that was lifestyle or diet-controlled. At Visit 1 (V1), a single dose of glipizide was administered in the fasting state with plasma glucose and insulin measured at regular intervals up to 240 minutes. After a washout period, participants received 500 mg of metformin twice daily for two days and, at Visit 2 (V2) a week later, a 75-g oral glucose tolerance test (OGTT) with glucose and insulin measurements. A subset had glucagon-like peptide 1 (GLP-1), glucose-dependent insulintropic polypeptide (GIP), proinsulin, and glucagon measured.

## Colocalization Methods

The COLOC 4.0 R package<sup>1</sup> was used for the colocalization analysis. We used the `coloc.abf` method which implements a variation of the Approximate Bayes Factor computations.<sup>2</sup> The `coloc.abf` function was called with two R lists, one for the SUGAR-MGH and one for the T2D/glycemic trait GWAS: `list(pvalues=..., N=..., MAF=..., snp=..., type="quant")`, with a vector of  $p$ -values,  $N$  for the sample size, MAF for the minor allele frequency, and `snp` for the rsid of the variant. The colocalization was run over regions ranging from one million base pairs downstream to one million upstream from the lead SUGAR-MGH variant. We reported the posterior probabilities (PP) of colocalization. The colocalization plots were generated using the `locuscompare` R package v1.0.0.<sup>3</sup>

## References

- 1 Giambartolomei C, Zhenli Liu J, Zhang W, *et al.* A Bayesian framework for multiple trait colocalization from summary association statistics. *Bioinformatics* 2018; **34**: 2538–45.
- 2 Wakefield J. Bayes factors for genome-wide association studies: comparison with P-values. *Genet Epidemiol* 2009; **33**: 79–86.
- 3 Liu B, Gloudemans MJ, Rao AS, Ingelsson E, Montgomery SB. Abundant associations with gene expression complicate GWAS follow-up. *Nat Genet* 2019; **51**: 768–9.

**Supplementary Table S1.** List of secondary outcomes of metformin and glipizide response in SUGAR-MGH.

Glucose at 30 mins at V1 +/- adjustment for baseline glucose V1
Glucose at 60 mins at V1 +/- adjustment for baseline glucose V1
Glucose at 90 mins at V1 +/- adjustment for baseline glucose V1
Glucose at 120 mins at V1 +/- adjustment for baseline glucose V1
Glucose at 180 mins at V1 +/- adjustment for baseline glucose V1
Glucose at 240 mins at V1 +/- adjustment for baseline glucose V1
Glucose at 30 mins at V2 +/- adjustment for baseline glucose V2
Glucose at 60 mins at V2 +/- adjustment for baseline glucose V2
Glucose at 120 mins at V2 +/- adjustment for baseline glucose V2
Area under the curve of insulin at V2 adjusted for fasting insulin at V2
Fasting glucose at V2 minus fasting glucose at V1 +/- adjustment for baseline glucose V1
Fasting insulin at V2 minus fasting insulin at V1 +/- adjustment for baseline insulin V1
HOMA-IR at V2 minus HOMA-IR at V1
HOMA-B at V2 minus HOMA-B at V1
Insulin at 30 mins at V1
Insulin at 60 mins at V1
Insulin at 90 mins at V1
Insulin at 120 mins at V1
Insulin at 180 mins at V1
Insulin at 240 mins at V1
Fasting insulin at V2
Insulin at 30 mins at V2
Insulin at 60 mins at V2
Insulin at 120 mins at V2
Slope to glucose trough at V1 +/- adjustment for baseline glucose
Slope to glucose recovery at V1 +/- adjustment for baseline glucose
Slope to insulin peak at V1 +/- adjustment for baseline insulin V1
Time to reach peak insulin at V1 +/- adjustment for baseline insulin V1

**Supplementary Table S2.** Demographic characteristics and baseline measurements of 890 participants with genome-wide genotyping in SUGAR-MGH.

	<b>All participants (n=890)</b>
Women [n (%)]	474 (53.3)
Age (years)	47.1 ± 16.2
BMI (kg/m <sup>2</sup> ) (n=873)	30.2 ± 7.2
Self-reported race/ethnicity [n (%)]	
White, non-Hispanic	560 (62.9)
Black, non-Hispanic	190 (21.4)
Hispanic	63 (7.1)
Asian, non-Hispanic	53 (5.9)
Others	24 (2.7)
Diagnosis of T2D [n (%)]	22 (2.8)
Received full glipizide challenge	572 (64.3)
Fasting glucose (mmol/L)	5.14 ± 0.94
Fasting insulin (pmol/L)	41.88 ± 42.13

Age, body mass index (BM), and fasting glucose are mean ± SD. Fasting insulin is median (interquartile range).

**Supplementary Table S3.** Genome-wide significant variants ( $p < 5 \times 10^{-8}$ ) associated with multiple drug response endpoints in SUGAR-MGH.

rsid	Chr	Position <sup>#</sup>	Nearest gene	NEA	EA	EAF	AFR*	AMR*	EAS*	EUR*	SAS*	N	Trait	Beta <sup>†</sup>	p-value	Additional traits
rs150628520 <sup>‡</sup>	4	187296094	<i>FAT1</i>	A	G	0.009	0.002	0.007	0.0002	0.011	0.002	550	Time to reach glucose trough at V1	1.7	$9.7 \times 10^{-9}$	Slope to glucose trough at V1 (beta=-1.7, $p=7.3 \times 10^{-8}$ )
rs111406936	10	113583078	<i>HABP2</i>	A	T	0.008	0.031	0.003	0	0.0002	0	776	Insulin at 60 mins at V2	-1.5	$6.4 \times 10^{-9}$	AUC insulin at V2 (beta=-1.4, $p=7.2 \times 10^{-7}$ )
rs149193557	3	98379904	<i>OR5K3</i>	A	C	0.013	0.0598	0.008	0	0.0003	0	545	AOC glucose at V1	-1.3	$1.1 \times 10^{-8}$	Glucose trough at V1 (beta=-1.3, $p=3.0 \times 10^{-6}$ )
rs111770298 <sup>‡</sup>	2	28307503	<i>BABAM2</i>	A	G	0.013	0.054	0.005	0	0.0001	0.0002	807	Fasting glucose at V2 adj. V1	0.7	$2.4 \times 10^{-8}$	Fasting glucose at V2-fasting glucose at V1 (beta=1.1, $p=2.7 \times 10^{-7}$ )
rs2749695	1	225964122	<i>LEFTY1, SDE2</i>	T	A	0.628	0.580	0.542	0.776	0.623	0.669	807	Insulin at 30 mins at V1	0.3	$3.2 \times 10^{-8}$	Insulin at 60 min at V1 (beta=0.2, $p=1.8 \times 10^{-6}$ )
rs146209333	3	64193613	<i>PRICKLE2</i>	T	C	0.012	0.002	0.005	0	0.014	0.003	830	Glucose at 60 mins at V1	-0.9	$3.3 \times 10^{-8}$	Slope to glucose trough at V1 (beta=1.2, $p=9.9 \times 10^{-8}$ ), Glucose trough at V1 (beta=-0.9, $p=2.8 \times 10^{-6}$ )
rs12062755	1	182077342	<i>ZNF648</i>	G	A	0.113	0.124	0.139	0.280	0.122	0.227	794	Glucose at 60 mins at V2	0.4	$4.4 \times 10^{-8}$	AUC glucose at V2 (beta=0.42, $p=5.7 \times 10^{-8}$ )

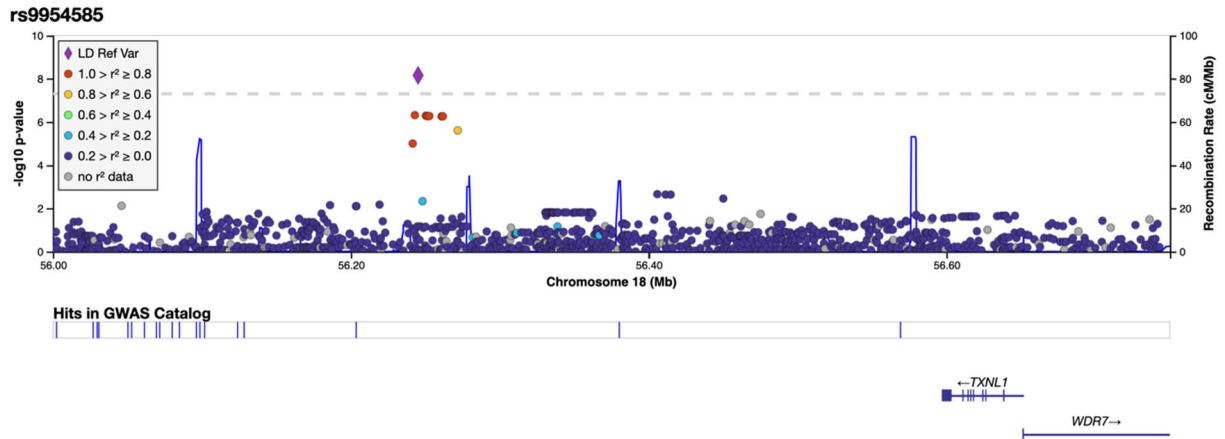
NEA=Non-effect allele; EA=Effect allele; EAF=Effect allele frequency; AFR=African; AMR=Admixed American; EAS=East Asian; EUR=European; SAS=South Asian; V1=Visit 1; V2=Visit 2; AOC=area over the curve; AUC=area under the curve. \*Ancestry-specific allele frequencies as reported by gnomAD 3.1.2 †Beta estimates are rank-inverse normalized. ‡Variant present in Table 1. #GRCh38 assembly.

**Supplementary Table S4.** Association of polygenic scores with the primary endpoints of metformin and glipizide response in SUGAR-MGH

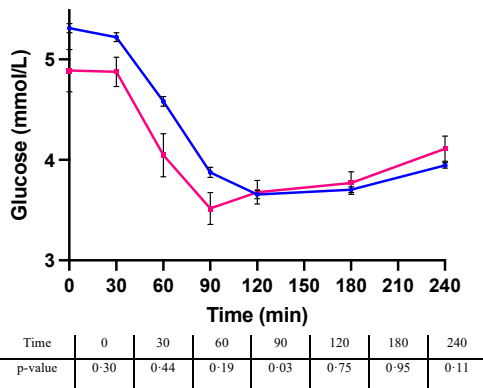
SUGAR-MGH Outcome	Beta	SD	p-value	Polygenic score tested	Reference
Fasting glucose at V2, adj. V1 (metformin)	0.091	0.029	0.0018	gePS for fasting glucose	Chen et al. 2021
Time to reach glucose trough (glipizide)	-0.082	0.038	0.031	obesity cluster (pPS)	Udler et al. 2018
Glucose trough adj. baseline glucose (glipizide)	0.187	0.094	0.048	gePS for type 2 diabetes	Mahajan et al. 2020; Vujkovic et al. 2020
Fasting glucose at V2, adj. V1 (metformin)	0.1	0.057	0.076	gePS for type 2 diabetes	Mahajan et al. 2020; Vujkovic et al. 2020
Time to reach glucose trough (glipizide)	0.089	0.05	0.078	gePS for fasting glucose	Chen et al. 2021
Fasting glucose at V2, adj. V1 (metformin)	0.048	0.029	0.11	gePS for HbA1c	Chen et al. 2021
Peak insulin, adj. baseline insulin (glipizide)	0.045	0.03	0.14	obesity cluster (pPS)	Udler et al. 2018
Fasting glucose at V2, adj. V1 (metformin)	-0.031	0.023	0.17	beta cell cluster (pPS)	Udler et al. 2018
Time to reach glucose trough (glipizide)	0.07	0.053	0.19	gePS for fasting insulin	Chen et al. 2021
Time to reach glucose trough (glipizide)	0.121	0.098	0.22	gePS for type 2 diabetes	Mahajan et al. 2020; Vujkovic et al. 2020
Peak insulin, adj. baseline insulin (glipizide)	-0.039	0.032	0.22	liver/lipid cluster (pPS)	Udler et al. 2018
Fasting glucose at V2, adj. V1 (metformin)	0.035	0.03	0.25	gePS for fasting insulin	Chen et al. 2021
Time to reach glucose trough (glipizide)	0.058	0.051	0.26	gePS for HbA1c	Chen et al. 2021
Glucose trough adj. baseline glucose (glipizide)	0.034	0.037	0.37	liver/lipid cluster (pPS)	Udler et al. 2018
Glucose trough adj. baseline glucose (glipizide)	0.033	0.036	0.37	obesity cluster (pPS)	Udler et al. 2018
Peak insulin, adj. baseline insulin (glipizide)	0.036	0.041	0.38	gePS for HbA1c	Chen et al. 2021
Fasting glucose at V2, adj. V1 (metformin)	-0.019	0.023	0.41	liver/lipid cluster (pPS)	Udler et al. 2018
Fasting glucose at V2, adj. V1 (metformin)	0.018	0.023	0.43	obesity cluster (pPS)	Udler et al. 2018
Peak insulin, adj. baseline insulin (glipizide)	0.035	0.043	0.43	gePS for fasting insulin	Chen et al. 2021
Glucose trough adj. baseline glucose (glipizide)	0.028	0.037	0.45	lipodystrophy cluster (pPS)	Udler et al. 2018
Fasting glucose at V2, adj. V1 (metformin)	0.015	0.024	0.53	proinsulin cluster (pPS)	Udler et al. 2018
Glucose trough adj. baseline glucose (glipizide)	0.029	0.05	0.57	gePS for fasting glucose	Chen et al. 2021
Peak insulin, adj. baseline insulin (glipizide)	0.015	0.032	0.63	lipodystrophy cluster (pPS)	Udler et al. 2018
Peak insulin, adj. baseline insulin (glipizide)	-0.014	0.031	0.65	beta cell cluster (pPS)	Udler et al. 2018
Time to reach glucose trough (glipizide)	0.017	0.039	0.67	lipodystrophy cluster (pPS)	Udler et al. 2018
Glucose trough adj. baseline glucose (glipizide)	0.019	0.051	0.7	gePS for fasting insulin	Chen et al. 2021
Glucose trough adj. baseline glucose (glipizide)	0.011	0.037	0.77	beta cell cluster (pPS)	Udler et al. 2018
Glucose trough adj. baseline glucose (glipizide)	-0.011	0.041	0.79	proinsulin cluster (pPS)	Udler et al. 2018
Time to reach glucose trough (glipizide)	0.009	0.039	0.82	liver/lipid cluster (pPS)	Udler et al. 2018
Peak insulin, adj. baseline insulin (glipizide)	-0.008	0.034	0.82	proinsulin cluster (pPS)	Udler et al. 2018
Time to reach glucose trough (glipizide)	-0.009	0.042	0.84	proinsulin cluster (pPS)	Udler et al. 2018
Peak insulin, adj. baseline insulin (glipizide)	0.007	0.041	0.87	gePS for fasting glucose	Chen et al. 2021
Peak insulin, adj. baseline insulin (glipizide)	-0.013	0.079	0.87	gePS for type 2 diabetes	Mahajan et al. 2020; Vujkovic et al. 2020
Fasting glucose at V2, adj. V1 (metformin)	-0.002	0.023	0.93	lipodystrophy cluster (pPS)	Udler et al. 2018
Glucose trough adj. baseline glucose (glipizide)	0.004	0.049	0.93	gePS for HbA1c	Chen et al. 2021
Time to reach glucose trough (glipizide)	-0.001	0.039	0.97	beta cell cluster (pPS)	Udler et al. 2018

gePS=global extended polygenic score; pPS=process-specific polygenic score

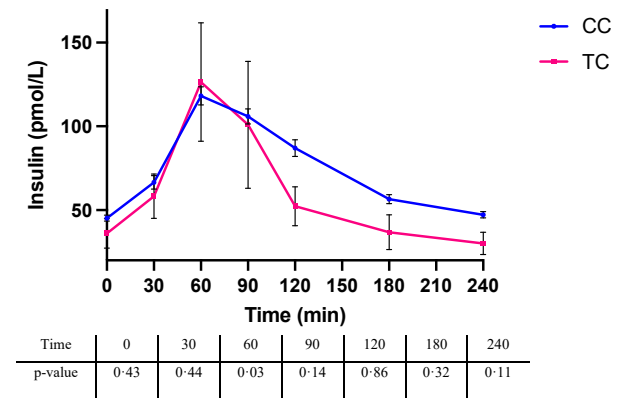
(A)



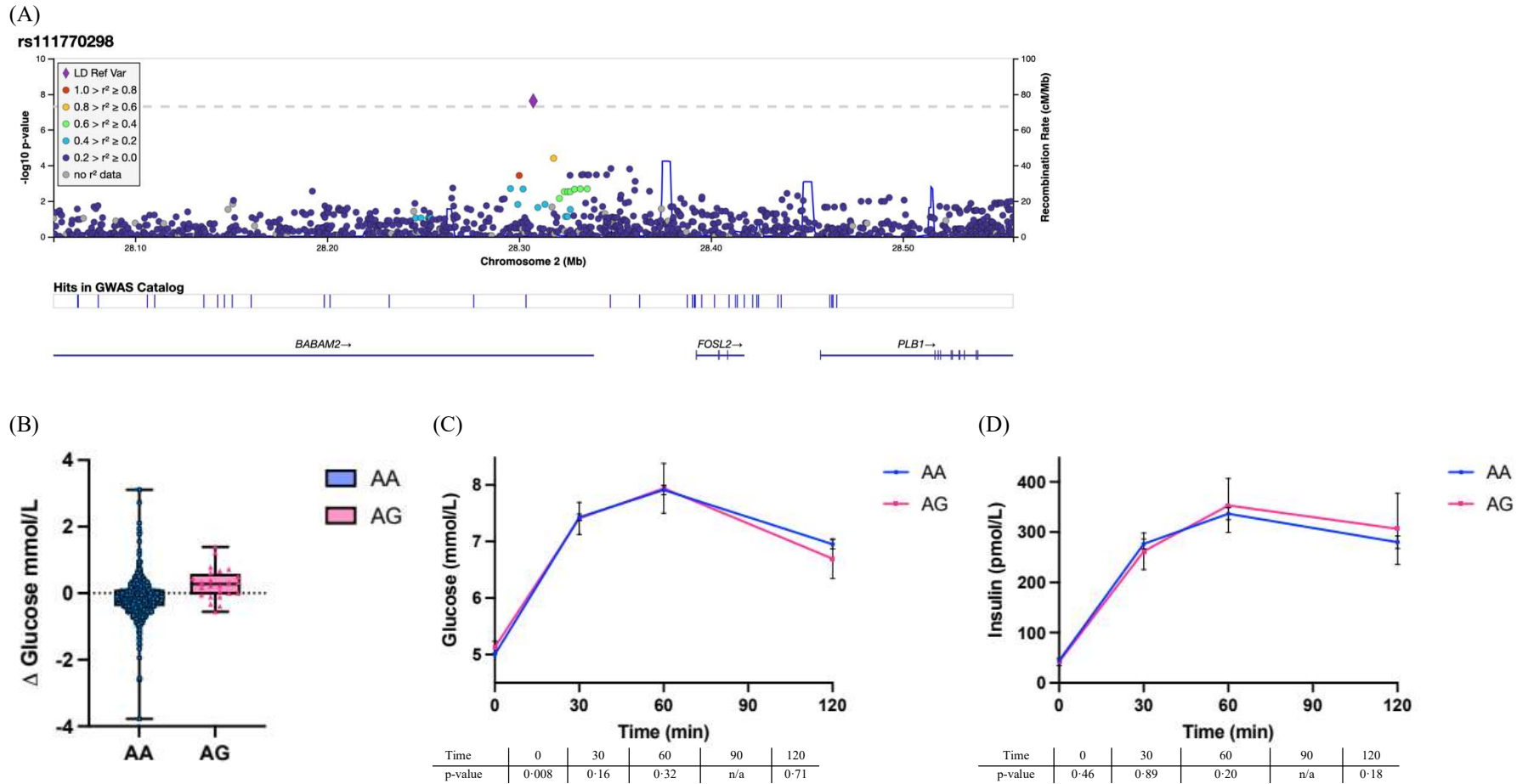
(B)



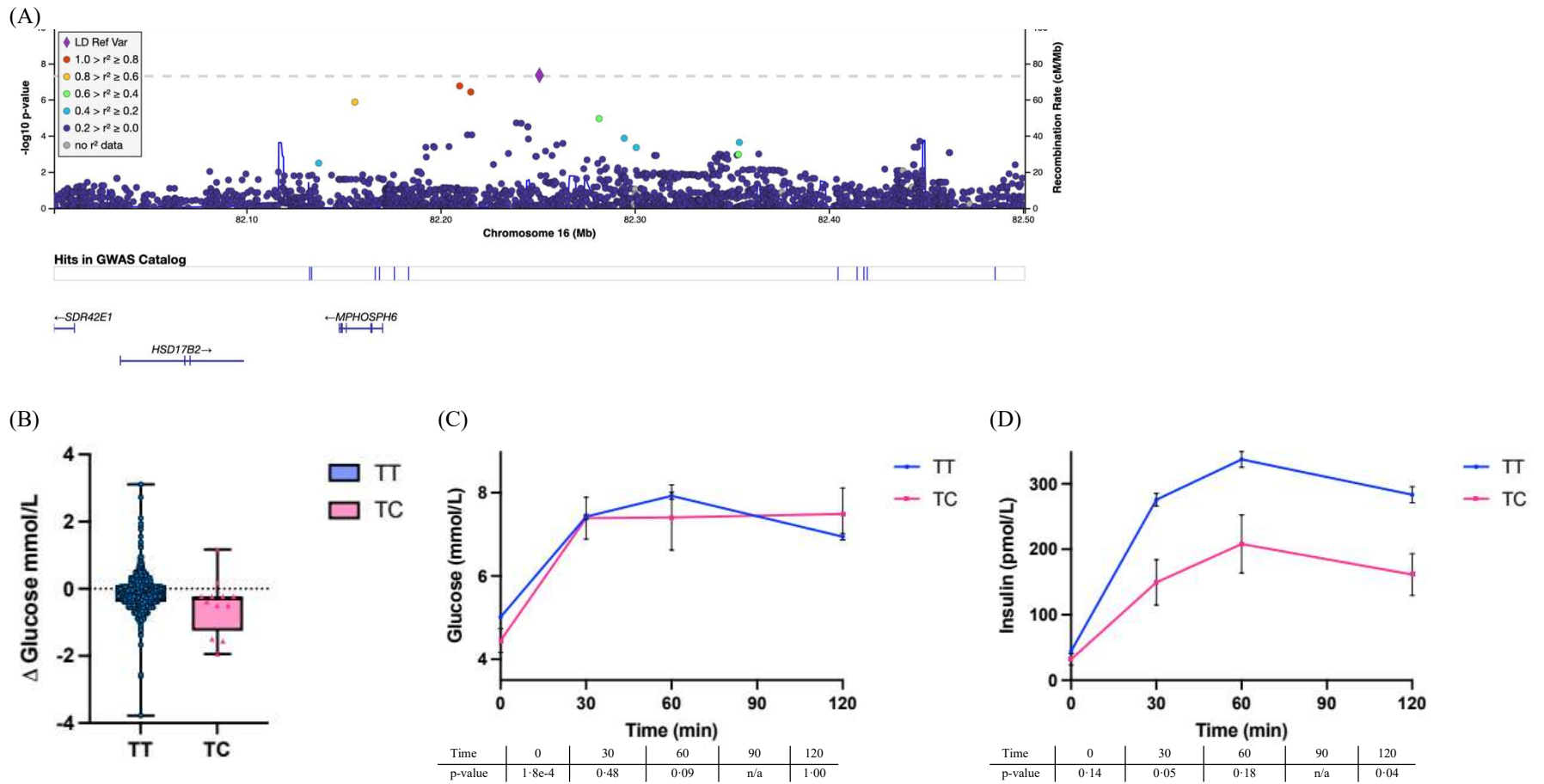
(C)



**Supplementary Figure S1.** (A) Regional association plot of rs9954585. (B) Change in plasma glucose by rs9954585 genotype at Visit 1 after glipizide administration. (C) Change in plasma insulin by rs9954585 genotype at Visit 1 after glipizide administration.



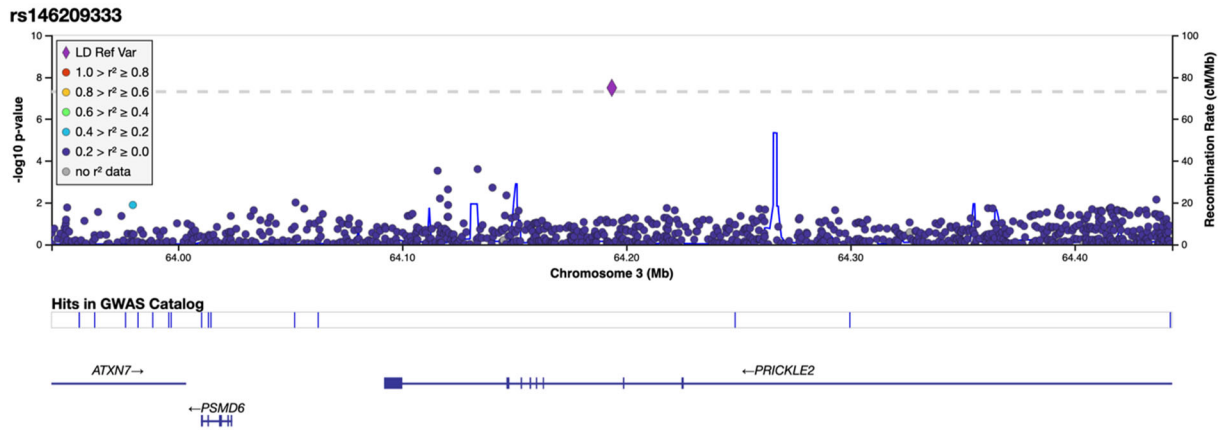
**Supplementary Figure S2.** (A) Regional association plot of rs111770298. (B) Box plot illustrating mean change in fasting glucose (Visit 2 minus Visit 1) by rs111770298 genotype. (C) Change in plasma glucose by rs111770298 genotype across the OGTT following metformin. (D) Change in plasma insulin by rs111770298 genotype across the OGTT following metformin.



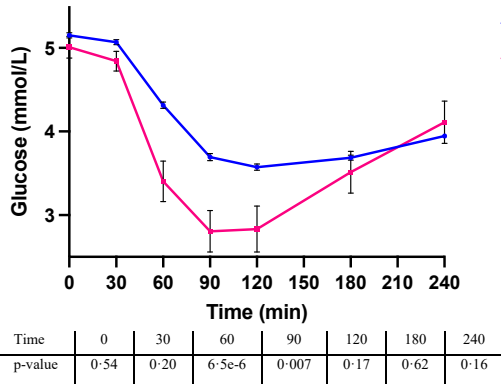
**Supplementary Figure S3.** (A) Regional association plot of rs117207651. (B) Box plot illustrating mean change in fasting glucose (Visit 2 minus Visit 1) by rs117207651 genotype. (C) Change in plasma glucose by rs117207651 genotype across the OGTT following metformin. (D) Change in plasma insulin by rs117207651 genotype across the OGTT following metformin.



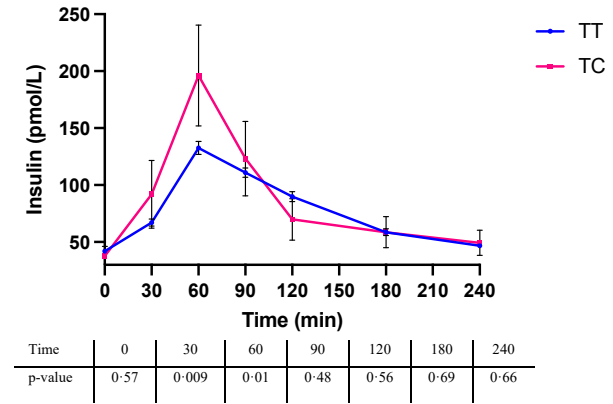
(A)



(B)



(C)



**Supplementary Figure S4.** (A) Regional association plot of rs146209333. (B) Change in plasma glucose by rs146209333 genotype at Visit 1 after glipizide administration. (C) Change in plasma insulin by rs146209333 genotype at Visit 1 after glipizide administration.