

Title: Omicron (BA.1) SARS-CoV-2 variant is associated with reduced risk of hospitalization and length of stay compared with Delta (B.1.617.2)

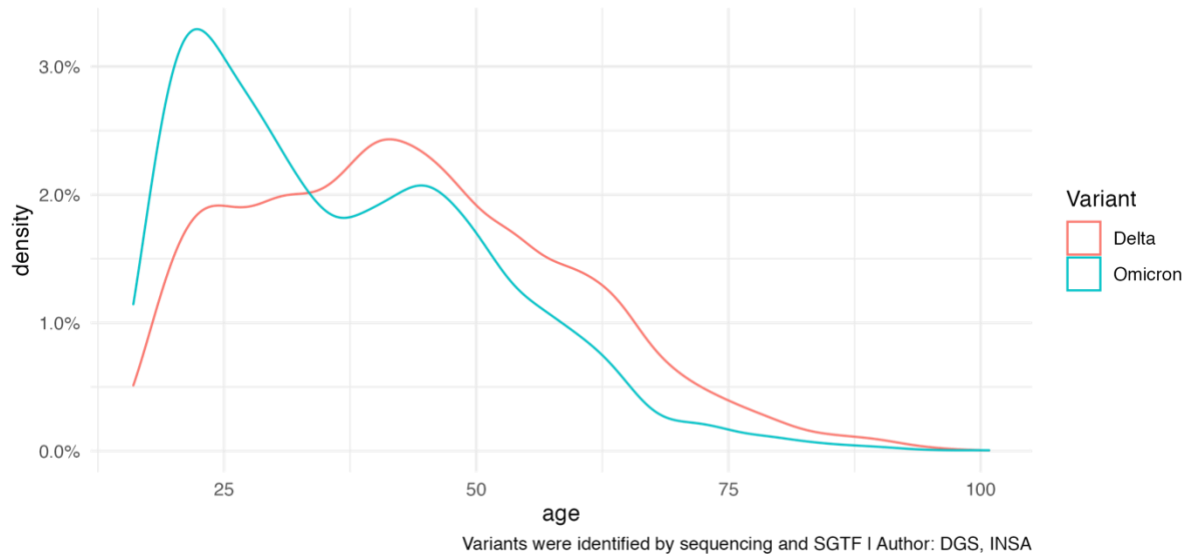
Supplementary Materials

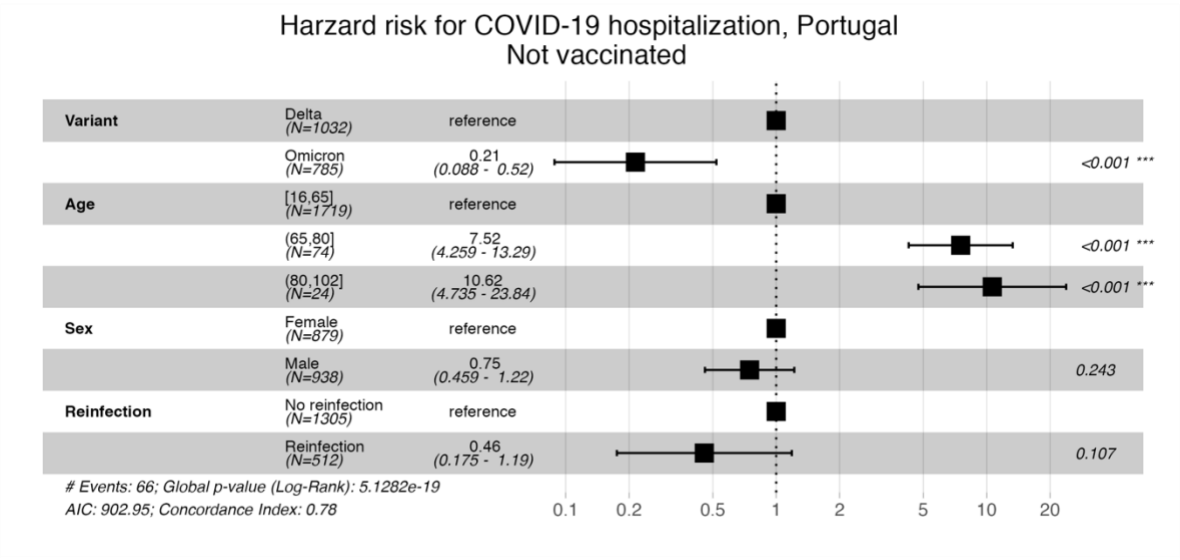
Equation S1 — Adjusted penalized logistic regression.

$$Y_{(Death|X)} = \beta_0 + \beta_1 Omicron + \beta_2 age\ group + \beta_3 sex + \beta_4 reinfection + \beta_5 vaccination\ status + \varepsilon$$

Where $Y_{(Death|X)}$ is the Odds of the outcome hospitalization conditional on covariates X (Omicron, age group, sex, previous infection and vaccine status), $\exp(\beta_1 Omicron)$ the odds ratio for the outcome being infected with Omicron variant compared with Delta, $\exp(\beta_2 age\ group)$ are the odds ratios for the outcome being 80 years or older, 65 years old to 80 compared with being 16 to 65 years old, $\exp(\beta_3 sex)$ the odds ratio for the outcome being a female compared with being male, $\exp(\beta_4 reinfection)$ is the odds ratio for the outcome of primary infection compared with reinfection, $\exp(\beta_5 vaccination\ status)$ is the odds ratio for the outcome having incomplete, complete, or complete plus booster compared with unvaccinated, ε is the error term.

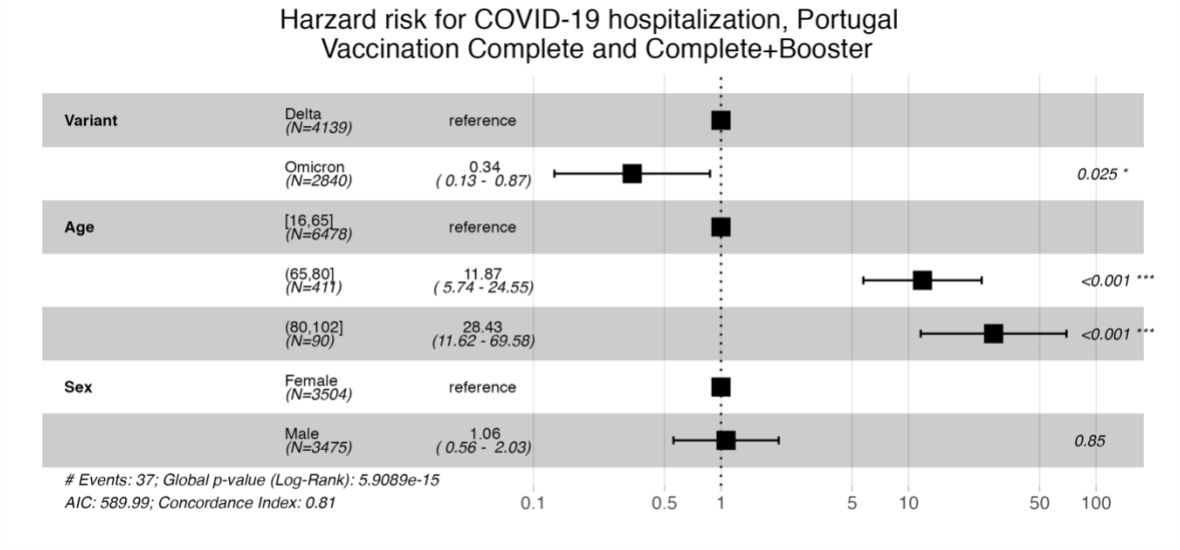
Figure S1 — Age density per virus variant of the study population
Age distribution of the study population





Variants were identified by sequencing and SGTF | Author: DGS, INSA

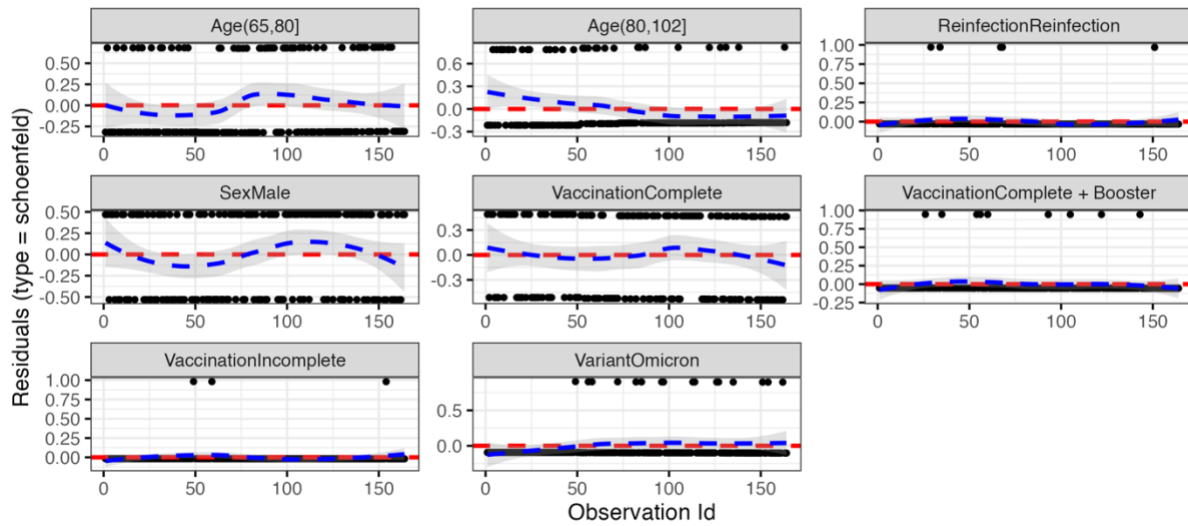
Figure S2. Hazard Ratio for hospitalization in the adjusted model stratified for not vaccinated individuals



Variants were identified by sequencing and SGTF | Author: DGS, INSA

Figure S3. Hazard Ratio for hospitalization in the adjusted model stratified for vaccinated individuals

Schoenfeld residuals of the adjusted model



The proportional hazard assumption is supported by a non-significant relationship between residuals and time, P Value 0.08

Figure S4. Schoenfeld residuals of the adjusted model for hospitalization

Table S1. Odds Ratio for death in the adjusted model

| | Odds ratio | Lower CI | Upper CI | P-value |
|--------------------|------------|----------|------------|---------|
| Omicron | 0.140 | 0.001 | 1.122 | 0.069 |
| Age | | | | |
| (16,65] | | | | |
| (65,80] | 258.531 | 32.696 | 33367.876 | <0.001 |
| (80,102] | 4635.480 | 595.183 | 597754.200 | <0.001 |
| Sex | | | | |
| Male | 4.663 | 1.923 | 12.600 | <0.001 |
| Reinfection | | | | |
| Yes | 0.273 | 0.002 | 4.030 | 0.385 |
| Vaccination | | | | |
| Incomplete | 0.959 | 0.007 | 11.285 | 0.979 |
| Complete | 0.335 | 0.131 | 0.925 | 0.036 |
| Complete + Booster | 0.046 | 0.008 | 0.195 | <0.001 |