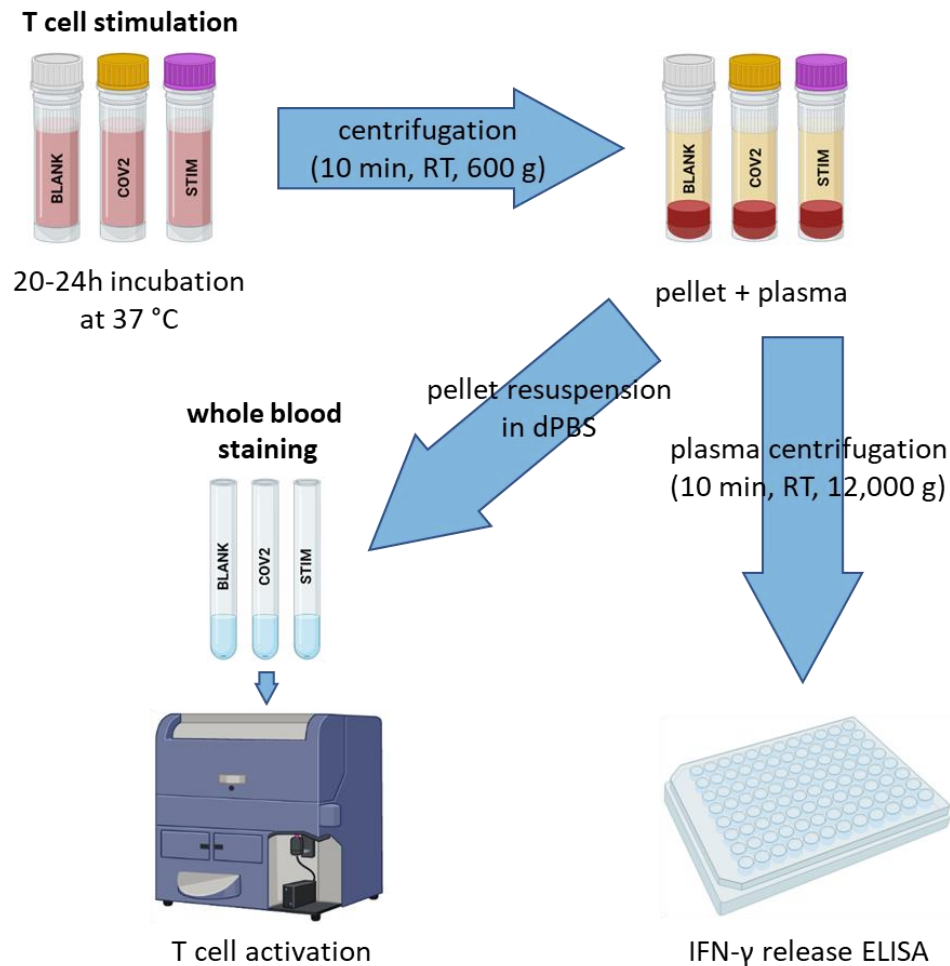


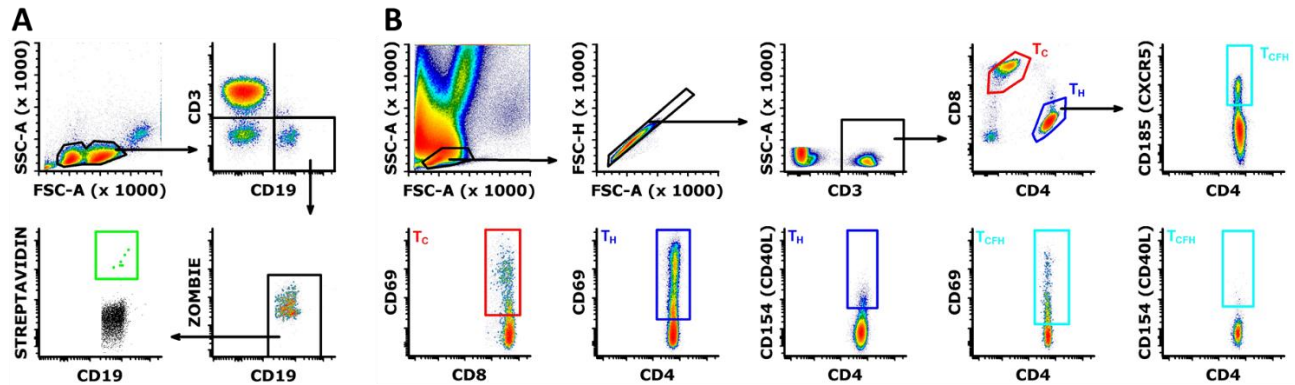
## Supplementary Material

### 1 Supplementary Figures and Tables

#### 1.1 Supplementary Figures



**Supplementary Figure 1. Graphic representation of the secondary read-out procedure to determine SARS-CoV-2 specific T cell activity.** Whereas the plasma was used to determine SARS-CoV-2-specific IFN- $\gamma$  release via the commercial Quant-T-Cell ELISA (EUROIMMUN, no. EQ 6841-9601), the remaining pellets within the IGRA tubes (BLANK, COV2, STIM) of the SARS-CoV-2 IGRA set (EUROIMMUN, no. ET 2606-3003) were resuspended and stained via a whole-blood principle to assess SARS-CoV-2-specific T cell activity. Abbreviations: RT = room temperature, IFN- $\gamma$  = interferon  $\gamma$ , ELISA = enzyme-linked immunosorbent assay, IGRA = interferon  $\gamma$  release assay.



**Supplementary Figure 2. Flowcytometric B and T cell profiling.** **A)** Gating strategy used to detect circulating RBD specific B cells from thawed PBMCs. **B)** Gating strategy used to define the different T cell subsets (T<sub>H</sub>, T<sub>c</sub> and T<sub>CFH</sub>) and to assess T cell activity using both CD69 and CD40L membrane markers from whole blood. Abbreviations: RBD = receptor-binding domain, PBMCs = peripheral blood mononuclear cells.

## 1.2 Supplementary Tables

**Supplementary Table 1. B and T cell staining panel used for flowcytometric phenotyping.**

Marker	Fluorochrome	Clone	Quantity/test	Company
<i>B cell panel *</i>				
CD3	FITC	UCHT1	1:1000 dilution	Biolegend
CD19	Per-CP/Cy5.5	HIB19	1:400 dilution	Biolegend
Streptavidin	PE	NA	1:1000 dilution	Biolegend
Zombie	Aqua	NA	1:1000 dilution	Biolegend
<i>T cell panel **</i>				
CD3	FITC	UCHT1	5 $\mu$ L / 100 $\mu$ L WB	Biolegend
CD4	Pacific Blue	SK3	5 $\mu$ L / test on WB	Biolegend
CD8	Brilliant Violet 510	RPA-T8	5 $\mu$ L / 100 $\mu$ L WB	Biolegend
CXCR5 (CD185)	PE/Cy7	J252D4	5 $\mu$ L / 100 $\mu$ L WB	Biolegend
CD40L (CD154)	PE	24-31	5 $\mu$ L / 100 $\mu$ L WB	Biolegend
CD69	APC	FN50	5 $\mu$ L / 100 $\mu$ L WB	Biolegend

\* B cell staining panel: quantity/test based on one million PBMCs per tube. \*\* T cell staining panel: quantity/test values represent those used to perform a whole blood staining. Abbreviations: NA = not applicable, WB = whole blood, PBMC = peripheral blood mononuclear cells.