

1 **The emergence of two distinct SARS-CoV-2 Gamma related variants during the second**
2 **wave of COVID-19 in Santa Catarina, Southern Brazil and the rapid spread of P.1-like-II**
3 **SARS-CoV-2 variant transmission and a regionalization in the Western region.**

4 **Authors:**

5 Dayane A. Padilha, Vilmar Benetti-Filho, Renato S. Moreira, Tatiany A. T. Soratto, Guilherme
6 A. Maia, Ana P. Christoff, Fernando H. Barazzetti, Marcos A. Schörner, Fernanda L. Ferrari,
7 Carolina L. Martins, Eric K. Kawagoe, Julia K. Wachter, Paula Sacchet, Antuani R. Baptistella,
8 Aline D. Schlindwein, Bruna K. Coelho, Sandra B. Fernandes, Darcita B. Rovaris, Marlei P. D.
9 Anjos, Fernanda R. Melo, Bianca Bittencourt, Sthefani Cunha, Karine L. Meneghetti, Nestor
10 Wendt, Tamela Z. Madaloz, Marcus V. D. Rodrigues, Doris S. M. Souza, Milene H. Moraes,
11 Rodrigo P. Baptista, Guilherme Toledo-Silva, Guilherme R. Maciel, Edmundo C. Grisard,
12 Patrícia H. Stoco, Luiz F. V. Oliveira, Maria L. Bazzo, Gislaine Fongaro¹ and Glauber Wagner^{1,2}

13 **Affiliations:**

14 Universidade Federal de Santa Catarina, Florianópolis, Santa Catarina, Brazil (D. A. Padilha, V.
15 Benetti, T. A. T. Soratto, G. A. Maia, F. H. Barazzetti, M. A. Schörner, F. L. Ferrari, C. L.
16 Martins, E. K. Kawagoe, J. K. Wachter, N. Wendt, T. Z. Madaloz, M. V. D. Rodrigues, D. S. M.
17 Souza, G. Toledo-Silva, G.R. Maciel, E. C. Grisard, P. H. Stoco, M. L. Bazzo, G. Fongaro and
18 G. Wagner); and Instituto Federal de Santa Catarina, Lages, Santa Catarina, Brazil (R. S.
19 Moreira); and Biome-Hub Pesquisa e Desenvolvimento, Florianópolis, Santa Catarina, Brazil (A.
20 P. Christoff, M. H. Moraes, L. F. V. Oliveira); and Universidade de São Paulo, São Paulo, Brazil
21 (P. Sacchet); and Universidade do Oeste de Santa Catarina, Joaçaba, Santa Catarina, Brazil (A.
22 R. Baptistella); and Secretaria de Estado da Saúde, Florianópolis, Santa Catarina, Brazil (A. D.

23 Schlindwein); and Laboratório Central do Estado da Saúde de Santa Catarina, Florianópolis,
24 Santa Catarina, Brazil (B. K. Coelho, S. B. Fernandes, D. B. Rovaris, M. P. D. Anjos); and
25 Diretoria de Vigilância Epidemiológica de Santa Catarina, Florianópolis, Santa Catarina, Brazil
26 (Fernanda R. Melo, Bianca Bittencourt); and Serviço Nacional de Aprendizagem Industrial,
27 Chapecó, Santa Catarina, Brazil (S. Cunha, K. L. Meneghetti); and University of Georgia,
28 Athens, Georgia, USA (R. P. Baptista).

29 **ABSTRACT**

30 COVID-19 has assumed significant and lasting proportions worldwide. Following initial cases in
31 the Western mesoregion, the State of Santa Catarina (SC), southern Brazil, was heavily affected
32 as a whole by the pandemic in early 2021. This study aimed to evaluate the dynamics of the
33 SARS-CoV-2 virus spreading patterns in the SC state through March 2020 to April 2021 using
34 genomic surveillance. During this period, 23 distinct variants, including two VOCs (Beta and
35 Gamma) were identified, among which, the Gamma and related lineages were predominant in
36 the second pandemic wave within SC. However, a regionalization of P.1-like-II in the Western
37 region was observed, concomitant to the increase in cases, mortality, and case fatality rate (CFR)
38 index. This is the first evidence of the regionalization of the SARS-CoV-2 transmission and
39 highlights the importance of tracking variants, dispersion and their impact of SARS-CoV-2 on
40 the public health system in Brazilian states.

41 **Keywords:** SARS-CoV-2; Surveillance; Genome; SARS-CoV-2 P.1 variant.

42

43

44 **Introduction**

45 The COVID-19 pandemic, caused by the SARS-CoV-2 virus, is the world's most
46 significant public health challenge of the last 100 years. This virus has infected more than 270
47 million people, leading to more than 5,3 million deaths worldwide by December 2021(1). In the
48 same period, since the first reported case on 12/01/2019, this virus infected around 22.2 million
49 people leading to 617 thousand deaths in Brazil and in the Southern State of Santa Catarina (SC),
50 1,238,056 cases and 20,101 deaths were reported (2).

51 With the virus' rapid accumulation of polymorphisms and the advance of the pandemic
52 new variants have emerged (3). Thus, genomic surveillance has been essential for monitoring
53 this disease and vital for local health agencies to have information to mitigate the effects of the
54 pandemic and adopt strategies to increase population engagement in COVID control policies (4).

55 Until December 2021, more than 6,1 million SARS-CoV-2 genomes have been
56 sequenced, allowing detection of several variants (5). Some new variants have distinctive
57 biological characteristics from their predecessors, such as better transmission, immunological
58 escape or distinguishing clinical symptoms (6). Some variants of SARS-CoV-2 have been
59 defined as Variants of Interest (VOIs) or Variants of Concern (VOCs) with potential impact on
60 public health. The main VOCs described have been: B.1.1.7/VOC 202012 (Alpha), December
61 2020; B.1.351/501Y.V2 (Beta), December 2020; P.1/ B.1.1.248/B1.1.28 (Gamma), January
62 2021; and B.1.617.2 (Delta), May 2021 (1). Recently, the B.1.1.529 (Omicron) variant was
63 reported in South Africa in November 2021 (1), evidencing that new VOC of SARS-CoV-2 are
64 still emerging and, thus, genomic surveillance of the virus remains crucial.

65 In Brazil, the VOC Gamma (P.1) variant was first reported in the city of Manaus, State of
66 Amazonas, in November 2020, being identified in 42% of RT-PCR positive samples collected
67 between December 15th and 23th, 2020 (7). This VOC has 1.7-2.6 times more transmissible than
68 previous strains circulating in Brazil, showing a 1.2-1.9-fold increase in the mortality risk to
69 adults and 5-8-fold for the young population (8), broadening the susceptible population under
70 risk of infection and hospitalization and the needs of hospitalization and intensive care (9).

71 Among several mutations for VOC Gamma the E484K mutation occurs in the receptor
72 binding domain (RBD) domain of the S protein and is believed to assist the evasion of the virus
73 from the immune system (10) and, therefore, may lead to lower vaccine efficacy (11). Also
74 present in the RBD domain, the N501Y mutation is associated with increased binding specificity
75 to the host cell angiotensin-converting enzyme 2 (ACE2) receptor. Subvariants of VOC Gamma
76 and related lineages (P.1-like-I and P.1-like-II), displaying distinct mutations, have also emerged
77 during 2021 (12). Among these, P.1.1, P.1.2, and P.1-like-II have spread across the border States
78 of Rio Grande do Sul (13) and Paraná (14) up to April 2021 and, concomitantly detected in SC
79 state (12).

80 In this context, our study evaluated the dispersion of different variants of SARS-CoV-2
81 through March 1st, 2020 to April 30th, 2021, in the state of Santa Catarina, especially during the
82 second wave of the pandemic (January to April 2021) when the VOC Gamma variant became
83 predominant in Brazil.

84 **Material and methods**

85 *Studied regions and sampling*

86 The State of Santa Catarina (SC) is located in the southern region of Brazil, having
87 borders with the Paraná (North) and Rio Grande do Sul (South) states, and Argentina (West).
88 With an estimated population of 7,333,473 inhabitants, the SC state is geographically divided
89 into six mesoregions: Greater Florianópolis, Itajaí River Valley, Mountain range, Northern,
90 Southern, and Western SC (15).

91 Genome sequences from 203 SARS-CoV-2 positive samples collected from different
92 mesoregions of the state of Santa Catarina, Brazil through March 1st, 2020 to April 30th, 2021,
93 were generated (Figure 1A) (Supplementary Table 1). Additionally, 527 SARS-CoV-2 genome
94 sequences obtained from samples isolated in SC (Figure 1B) and 49 genome sequences from
95 samples isolated worldwide, including the original SARS-CoV-2 sequence (NC_045512.2), were
96 retrieved from the EpiCov database GISAID (5) and included in this study (only genome
97 sequences showing <5% ambiguous nucleotide and > 85% genome sequence coverage). This
98 study was approved by the Federal University of Santa Catarina Ethics Committee (CAAE:
99 31521920.8.0000.0121).

100 *RNA purification and sequencing*

101 The study used 203 human nasopharyngeal swab samples from SARS-CoV-2 positive
102 patients diagnosed via RT-qPCR. Inclusion criteria was a positive RT-PCR for gene E with C_t
103 values < 25. Total viral RNA was extracted using the RNA Viral Kit (QIAGEN, Hilden,
104 Germany) and the long amplicon pooled protocol was used (17). Briefly, complementary DNA
105 (cDNA) was synthesized from viral RNA using 50 μ M random primers and 200 U/ μ L
106 Superscript IV reverse transcriptase (ThermoFisher Scientific, Waltham, MA, USA). The
107 obtained cDNA was amplified using 10 μ M of 14 primer sets in individual reactions to amplify

108 different regions of the SARS-CoV-2 genome (approximately 2.5 Kb in each fragment) and 40
109 U/μL Platinum *Taq* DNA polymerase High Fidelity (Invitrogen, Waltham, MA, USA).
110 Amplicons were visualized on agarose 2% gel electrophoresis.

111 The amplicons were then pooled, purified using the AMPure XP (Beckman Coulter,
112 Brea, CA, USA) and quantified by Quant-iT Picogreen dsDNA assays (Invitrogen, Waltham,
113 MA, USA). Pools were then processed using the Illumina DNA Prep (Illumina, San Diego, CA,
114 USA), following manufacturer's protocol. Libraries were quantified using the Colibri Library
115 Quantification kit (ThermoFisher Scientific, Waltham, MA, USA), adjusted to 11.5 pM and
116 prepared for paired-end sequencing (2x 150 bp) using the MiSeq Reagent Kit V2 (300-cycles)
117 (Illumina, San Diego, CA, USA). Sequencing was performed on the Illumina MiSeq platform
118 (Illumina, San Diego, CA, USA).

119 *SARS-CoV-2 genome assembling and variant analysis*

120 The SARS-CoV-2 genome was assembled according to ARTIC protocol (18). Briefly,
121 low-quality bases ($Q < 25$) and Illumina adapters were trimmed (19), and mapped to the human
122 reference genome (hg19 - GCF_000001405.13) to remove contaminants using BWA v. 0.7.17
123 (20). Next, human-free reads were aligned to the SARS-CoV-2 reference genome
124 (NC_045512.2) using BWA with default parameters. Ivar v. 1.3 (21) and mpileup function from
125 samtools v. 1.7 (22) were used to perform variant calling and to generate genomes consensus
126 sequences. Assembled genomes were analyzed in the Nextclade (23) and Pangolin (24)
127 platforms to classify the SARS-CoV-2 variants.

128 Mutations, deletions, and insertions were used to assess the dissimilarity of the genomes
129 using the vegan R package v. 2.5.6 (25) with the Jaccard index method. The multidimensional

130 scaling (MDS) and the distribution of variants in SC were plotted using the ggplot2 R package v.
131 3.3.0 (26).

132 *Maximum-likelihood (ML) phylogenetic analysis*

133 The ML phylogeny was performed using all 779 SARS-CoV-2 genome sequences
134 (Supplementary Table 2). Sequences were aligned by MAFFT v. 7.310 (27) with default
135 parameters and were manually curated using AliView v.1.26 (28). A ML tree was constructed
136 using the alignment, with GTR+F+I as the substitution model predicted by ModelFinder (29),
137 1,000 bootstrap runs using UFBoot tree optimization (30) and SH-like approximate likelihood
138 ratio test (SH-aLRT) (31), using IQ-TREE v. 2.1.3 (32). ML tree was visualized and annotated
139 using the ggtree R package v. 2.0.4 (33).

140 *Network analysis of SC VOC Gamma and related lineages during the second wave*

141 The network analysis was performed using 589 Brazilian VOC Gamma and related
142 genomes retrieved from GISAID, of which, 418 were SC SAR-CoV-2 genomes from samples
143 obtained from January 5th, 2021, to April 30th,2021, and 171 genome sequences from other
144 Brazilian states sequenced up to January 5th, 2021 (Supplementary Table 3). The ML consensus
145 tree as constructed like above, except the substitution model was GTR+F+R2. The network
146 analysis was performed using online service StrainHub with closeness centrality (34), ML
147 consensus tree, and corresponding metadata.

148 *Spike (S) gene sequence polymorphism and protein structure analysis*

149 For structural analysis of S protein of VOC Gamma, 57 presented full-length S protein
150 coverage of VOC Gamma sequenced in this study with 722 retrieved from GISAID (December

151 3rd, 2021), including the reference sequence (NC_045512.2) were aligned using MAFFT (27).
152 The mutations were represented over the 3D S protein structure PDB 6ZGG (resolution 3.8 Å).
153 The experimental structure presents a representative coverage of the N-terminal domain (NTD)
154 (Gln14 to Asp1146). The mutations were highlighted and colored according to observed
155 frequencies and built with PyMOL version 2.3.3 software (35).

156 **Results**

157 *Profile of SARS-CoV-2 variants in State of Santa Catarina after one year of COVID-19* 158 *pandemic*

159 A total of 23 distinct SARS-CoV-2 variants were identified among the studied genomes
160 (Figure 2A). Of these 730 complete genomes, 316 (43.2%) were classified as the VOC Gamma,
161 followed by 175 (23.9%) of the former VOI Zeta variant (P.2) in and 69 (9.4%) of the P1-like II
162 variant. Only four sequences of the VOC Alpha variant (B.1.1.7) were observed among the
163 analyzed samples.

164 The first sequenced sample was classified as a B.39 variant. Then, the B.1.1.28 and the
165 B.1.1.33 variants prevailed from May - November 2020, when the P.2 variant gradually became
166 the most prevalent. The P.2 variant peaked in December 2020 and was displaced quickly by the
167 P.1 variant. By January 2021, the VOC Gamma had already taken over most of the samples in
168 Santa Catarina (Figure 2A). Until December 2020 the profile of variants is similar among the
169 mesoregions. However, in the beginning of the second wave (January to April 2021), the
170 Western mesoregion has a distinct profile, with the P.1-like-II lineage being predominant in that
171 region (Figure 2B). The Mountain Range was sampled only in February 2021, where 10 VOC
172 Gamma and a single P.1-like-II was detected.

173 *VOC Gamma and related lineages in Santa Catarina.*

174 We inferred phylogenetic relationships between the SARS-CoV-2 genomes from SC and
175 the other known variants (Figure 3). Most of the SC sequences were grouped in the VOC
176 Gamma clade, which includes subvariants P.1.1, P.1.2 and P.1.10, and related lineages (P.1-like I
177 and P.1-like II). However, this parent clade generates two distinct sub-clades, one containing the
178 variant P.1-like-II and P.1-like-I, and the other clustering sequences classified as P.1 and their
179 subvariants. It is noteworthy to mention that the clade formed mainly by P.1-like-I and P.1-like-
180 II variants is composed of samples from the Western SC, pointing out a possible independent
181 introduction and regionalized transmission of such variants in that region.

182 A Multidimensional scale (MDS) plot shows the clustering of the SARS-CoV-2 genomes
183 according to the mutations observed (Figure 4A). There was no clear clustering of the studied
184 SARS-CoV-2 variants according to the sampled geographic regions along the sampling period
185 (Figure 4B). However, in a separate analysis of the data from the VOC Gamma and the related
186 lineages, it was possible to observe a clustering of genomes from Western SC (Figure 4C),
187 mainly composed by the P.1-like-II variant (Figure 4D).

188 As the ML and the MDS analyses pointed out the evidence of genetic proximity of the
189 cluster of P.1 related lineage (P.1-like-II) in the Western SC, we compared all SC VOC Gamma
190 and related lineages sequences obtained from August 7th, 2020 to April 30th, 2021. These
191 genomes were classified based on the amino acid substitutions described in P.1-like-I (36) and
192 P.1-like-II (13) variants. Mutations that characterize each VOC Gamma related lineage profile
193 were identified and are summarized in Supplementary Figure 1.

194 In more than 90% of the S protein of the VOC Gamma and related lineages presents the
195 mutation L18F, P26S, D138Y, and R190S positions of the NTD region (Figure 5). The typical
196 P.1 mutations were found in the RBD domain (K417T, E484K, and N501Y), SD domain
197 (D614G and H655Y), and overall structure (T1027I, and V1176F). In 20% of sequences
198 conserved the original amino acid T20 in the NTD, being characterized as P.1-like-II lineages.

199 *The rapid spread and regionalization of P.1-like-II during the second wave of COVID-19*
200 *pandemic in Santa Catarina, Brazil*

201 During the second wave of COVID-19 (January - April 2021) the VOC Gamma and
202 subvariants were the most representative SC. However, it does not present a homogeneous
203 variant distribution pattern in the mesoregions (Figure 2B). Network analysis revealed that VOC
204 Gamma and related lineage genomes had a genetic proximity with genomes sequenced in the
205 State of Amazonas (Figure 6A). The VOC Gamma and related lineages from the Western SC had
206 fewer interactions with other SC mesoregions than with the State of Amazonas (Figure 6B). The
207 city of Chapecó-SC, the major municipality of the Western Santa Catarina, acted as a point of
208 concentration and dissemination of lineages imported from Manaus to other Western cities
209 (Figure 6C).

210 Also, it was observed that in February and March 2021, 75% and 60% of the sequences
211 in the Western SC were classified as P.1-like-II, respectively (Figure 7). Furthermore, in the
212 same period, this mesoregion had the highest Case Fatality Rate (CFR), mortality, and the
213 number of deaths in the state of Santa Catarina (Figure 8), which indicates that rapid
214 dissemination of P.1-like-II variant in the region followed by an increase in deaths.

215 Taken together, these data indicate distinct introductions of VOC Gamma and related
216 lineages in Santa Catarina, followed by a rapid dispersion of the P.1-like-II variant in the
217 Western region of SC and a regionalization in the transmission of P.1-like-II in the Western
218 region.

219 Discussion

220 In this study carried out between March 2020-April 2021, we sequenced 203 SARS-
221 CoV-2 genomes from human samples collected from different regions of the SC state,
222 representing 27.8% of the virus genomic sequences generated for this region. Assessment of
223 SARS-CoV-2 genetic profiles (Figure 2A) allowed the identification of VOC Alpha
224 (20I/501Y.V1/ B.1.1.7) and especially the Gamma (20J/501Y.V3/P.1) from January 2021
225 onwards, corresponding to the second wave of the pandemic in SC, as also observed in other
226 Brazilian states (37, 38), indicating the homogeneity of the spreading pattern within Brazil at that
227 time. However, between August 2020-November 2020 we were able to identify the emergence
228 of the formerly VOI P.2 (1) in SC, which rapidly turned to be more prevalent than the other
229 variants circulating in the region. This variant was originally identified in Brazil in Rio de
230 Janeiro by July 2020, although phylogenetic analyses indicate that the variant may have arisen as
231 early as February 2020 (39). Similar to our findings in SC, P.2 was reported to have become
232 predominant in several Brazilian states around the same period, especially in Northeastern and
233 Southeastern Brazil, when variant P.1 turned to be more prevalent by beginning 2021 (39),
234 except for the State of Amazonas where P.2 variant was first detected in November 2020 but was
235 overshadowed by P.1 since its early detection and thus never became the main circulating variant
236 (38). After the emergence of VOC Gamma in Manaus City, State of Amazonas (7), the first case
237 of P.1 SC was reported in in Florianópolis City (Greater Florianópolis) (hCoV-19/Brazil/SC-

238 1326/2021) by January 8th, 2021, and the first case of VOC Gamma related lineage (P.1-like-II)
239 in Chapecó City (Western Santa Catarina) on January 22th, 2021, the later also reported by Gräff
240 et al. (12).

241 ML analysis of P.1-like-II samples obtained from patients living in the Western
242 mesoregion of SC were clustered in a single, separate clade (Figure 3), while viral samples from
243 the other SC regions due to scarce P.1-like-II were mostly VOC Gamma and subvariants,
244 pointing out that introduction and initial spreading of P.1-like-II variant in SC occurred via
245 Western mesoregion (Figures 4C and 4D). Also, as highlighted in Figure 5 and Supplementary
246 Figure 1, VOC Gamma is characterized by three mutations in the Receptor Binding Domain -
247 RBD (K417T, E484K, and N501Y) that can modulate ACE2/RBD affinity, increasing
248 transmissibility or even the affinity of antibody. In addition to mutations L18F, T20N, P26S,
249 D138Y and R190S in the N-terminus (NTD), D614G and H655Y in the C-terminus of S1, and
250 T1027I and V1176F in S2 are also report to VOC Gamma (40). All these mutations were
251 identified in SC, however the cluster 3 and 8 contain the P.1-like-II lineage are formed by
252 sequences with the absence of T20N mutation and are composed specially by samples from
253 Western region (Supplementary Figure 1).

254 Thus, in this study, analysis of such markers allowed identification of two main lineages
255 that are distinguished by the presence or absence of the T20N mutation in the S protein. This
256 SARS-CoV-2 protein is highly glycosylated, being involved in the virus evasion mechanisms of
257 the human immune system through mutations that hinder viral recognition by the immune
258 system. Most of these glycosylation sites are located in Asp residues that contains N-
259 glycosylation sites, or Ser and Thr residues that contain O-glycosylation sites. Among these, the
260 most frequent glycosylation sites were found in N+2, where Asp is followed by a Ser/Thr

261 residues (41). Remarkably, the herein reported T20N mutation at the NTD is followed by a Thr
262 (N+2) in all analyzed samples (N20X21T22) and introduces a new potential O-glycosylation site
263 within the S protein that may increase the virus capability to evade the immune defenses of viral
264 neutralization by means of antibodies, not altering the potential N-glycosylation site at N17 that
265 is also present in P.1 variants, where a Thr follows an Asp residue at position 19 (N17X18T19).

266 As shown in Figure 4D, by February 2021 we identified a high frequency of the
267 subvariant P.1-like-II in samples from Western SC if comparing to the other regions of the state,
268 preceding an increase in the CFR index, mortality rate, and deaths (Figure 8) on that mesoregion.
269 Taken together, these data indicate that P.1-like-II had high transmissibility and effect on the
270 lethality in the Western SC. Naveca et al. (38) showed how the second wave of COVID-19 in the
271 state of Amazonas, with a sudden rise in cases and number of deaths during late 2020 and early
272 2021, directly correlates to the rise in Gamma frequency in the state, which had reached a
273 massive prevalence by January 2021. Faria et al. (7) demonstrated that the infection by VOC
274 Gamma is 1.1-1.8 times more severe than those previously observed by other variants,
275 considering that the results of this variant was related to higher viral loads, greater
276 transmissibility and an increase in the number of deaths.

277 The relationship between the increase in the number of cases and the appearance of
278 variants was also observed outside of Brazil, such as in India and Europe. In India, the
279 appearance of the Delta variant was observed during the second wave, correlating with the
280 consequent increase in the number of deaths. In Europe, the second wave was also marked by an
281 increase in the number of cases and deaths, which correlated with the appearance of the Alpha
282 variant (42, 43).

283 However, transmission rate of SARS-CoV-2 may be affected by a variety of factors and
284 the emergence of a given variant could not be considered the unique factor to increase such rate
285 (44). Along several virus-inherent factors such as genetic variability, the lack or misuse of non-
286 pharmaceutical interventions (NPI), social difficulties for diagnosis or late diagnosis,
287 uncontrolled population movement (45), the collapse of the public health system (46), lower
288 vaccination (47), the overtime decrease of the immune protection (46), late or misdecisions taken
289 by authorities (49), and the use of scientifically unproven preventive therapies (50-52), are also
290 important factors that might contribute to increase the transmission and case fatality rates.
291 Examples in different countries show that an increase in the movement of people and low
292 widespread adherence to the NPI was observed weeks before the collapse of the public health
293 service, and the consequent increase in the number of cases and deaths (53-54). Indeed, the
294 SARS-CoV-2 circulation is evidenced by the detection of viral RNA copies in sewage months
295 before being reported in people, as occurred in Santa Catarina state in November 2019 (55).
296 Thus, we cannot rule out that conjunction of both viral and other biological, environmental and
297 behavioral factors have significant influence on the occurrence of SARS-CoV-2 variants
298 presenting variable infectivity and pathological effects. Such may have contributed to the
299 differentially increased number of cases, hospitalization, and deaths (CRF) in a short period of
300 time in the Western SC as also previously observed in Manaus (Amazon, Brazil) having totally
301 distinct environmental conditions than SC.

302 With the following report of the VOC Omicron in South Africa in November 2021 (1),
303 this variant was rapidly detected worldwide (1) and reported in SC, beginning of December
304 2021, evidencing the ongoing viral adaptations and the continuing pandemic spreading pattern.
305 Considering these facts, it is of utmost importance the needs for maintenance of a detailed and

306 standardized genomic surveillance of SARS-CoV-2 variants towards precise and specific
307 identification of VOCs, avoiding erroneous epidemiological inferences and allowing evaluation
308 of vaccine efficacy across viral variants.

309 Genomic surveillance of the SARS-CoV-2 pandemic has been crucial to assess the
310 accumulation of mutations, mostly due to the enormous quantity of viral replication events, and
311 the biological outcomes of the genetic variability of each variant on the epidemiology,
312 transmissibility, infectivity, pathogenesis and vaccine efficacy and effectiveness. Since major
313 concerns over the genetic evolution of SARS-CoV-2 are related to an increased spreading
314 capability and to the escape from the immune system, genomic surveillance provides essential
315 data to prevent the current pandemic from lasting even longer.

316 **Conclusion**

317 Worldwide assessment of circulating variants of SARS-CoV-2 is crucial to predict and
318 evaluate the impact of the COVID-19 pandemic over time. In SC (Southern Brazil), an attractive
319 touristic destination, the VOC Gamma was the most prevalent variant detected among the
320 infected population. Despite such general predominance, our data suggest a primary, distinct
321 introduction, and rapid spreading of the P.1-like-II in the Western regions of SC in the initial
322 months of 2021, where it was responsible for a distinct and increased hospitalization and
323 mortality rates. This study allowed us to observe the distinct patterns of circulation of different
324 SARS-Cov-2 variants within SC regions. Thus, the continuous real-time genomic surveillance of
325 SARS-CoV-2 in Santa Catarina will offer precise epidemiological support for implementation
326 and review of policies and actions carried out by public health authorities towards control of
327 COVID-19 transmission and assessment of vaccine efficacy.

328 **Acknowledgments**

329 This work is dedicated to all SC citizens who suffered or passed away due to COVID-19.
330 We also are indebted to Hospital Universitário/HU/EBSERH from Federal University of Santa
331 Catarina (Florianópolis, SC, Brazil), Hospital Regional do Oeste (Chapecó, SC, Brazil) and
332 Hospital Regional Santa Terezinha (Joaçaba, SC, Brazil) for granting access to interview patients
333 and perform sample collection. This work was supported by Santa Catarina Research Foundation
334 (Fundação de Amparo à Pesquisa e Inovação of Santa Catarina, FAPESC, Santa Catarina, Brazil)
335 (grant number COV2020051000065), CAPES (Coordination for the Improvement of Higher
336 Education Personnel, Brazil), CNPq (National Council for Scientific and Technological
337 Development, Brazil) and UFSC (Federal University of Santa Catarina). We also are thankful to
338 all institutions that provide access to genome data at EpiCov (GISAID). DAP, VBF, TATP,
339 GAM, CLM, EKK and TZM were recipients of FAPESC, CAPES or CNPq scholarships.

340 **Disclaimers**

341 The opinions expressed by authors contributing to this journal do not necessarily reflect the
342 opinions of the Federal University of Santa Catarina, Brazil, or the institutions with which the
343 authors are affiliated. Funders have no role on study design, data analysis or decision to publish.

344 **Author Bio** (first author only, unless there are only 2 authors)

345 Dayane A. Padilha is a PhD student in Biotechnology and Biosciences at the Federal University
346 of Santa Catarina (UFSC) and recipient of a CAPES scholarship. She works at both Applied
347 Virology and Bioinformatics Laboratories at UFSC. Her main interest is on virus genomics
348 applied to genomic surveillance.

349 **Footnotes (if applicable)**

350 ¹ These authors were co–principal investigators.

351 ² Corresponding author.

352 **References**

- 353 1. World Health Organization. WHO Coronavirus (COVID-19) [Internet]. 2019 Dec 30
354 [cited 2021 Dec 12] <https://www.who.int>
- 355 2. National Council of Health Secretaries - Covid-19 CONASS Panel [Internet]. 2021 May
356 [cited 2021 Dec 4] <https://www.conass.org.br/painelconasscovid19/> .
- 357 3. Singh J, Pandit P, McArthur AG, Banerjee A, Mossman K. Evolutionary trajectory of
358 SARS-CoV-2 and emerging variants. *Virology*. 2021 Aug 13;18(1):166.
- 359 4. Meredith LW, Hamilton WL, Warne B, Houldcroft CJ, Hosmillo M, Jahun AS, et al.
360 Rapid implementation of SARS-CoV-2 sequencing to investigate cases of healthcare
361 associated COVID-19: a prospective genomic surveillance study. *Lancet Infect Dis*. 2021
362 Mar;21(3):e36. Corrected and republished from *Lancet Infect Dis*. 2020
363 Nov;20(11):1263-1272.
- 364 5. Global Initiative on Sharing Avian Influenza Data. [Internet]. 2008 [cited 2021 Nov 27]
365 <https://www.gisaid.org> .
- 366 6. Tao, K., Tzou, P.L., Nouhin, J. *et al*. The biological and clinical significance of emerging
367 SARS-CoV-2 variants. *Nat Rev Genet*. 2021; 22: 757–773.
- 368 7. Faria NR, Mellan TA, Whittaker C, Claro IM, Candido DDS, Mishra S, et al. Genomics
369 and epidemiology of P.1 SARS-CoV-2 lineage in Manaus, Brazil. *Science*. 2021 May 21;
370 372(6544):815-821.

- 371 8. Hemmer CJ, Löbermann M, Reisinger EC. COVID-19: epidemiology and mutations: An
372 update [in German]. *Radiologe*. 2021 Oct;61(10):880-887.
- 373 9. Nonaka CKV, Gräf T, Barcia CAL, Costa VF, de Oliveira JL, Passos RDH, et al. SARS-
374 CoV-2 variant of concern P.1 (Gamma) infection in young and middle-aged patients
375 admitted to the intensive care units of a single hospital in Salvador, Northeast Brazil,
376 February 2021. *Int J Infect Dis*. 2021 Oct;111:47-54.
- 377 10. Greaney AJ, Starr TN, Gilchuk P, Zost SJ, Binshtein E, Loes AN, et al. Complete
378 Mapping of Mutations to the SARS-CoV-2 Spike Receptor-Binding Domain that Escape
379 Antibody Recognition. *Cell Host Microbe*. 2021 Jan 13;29(1):44-57.
- 380 11. Liu Z, VanBlargan LA, Bloyet LM, Rothlauf PW, Chen RE, Stumpf S, Zhao H, Errico
381 JM, Theel ES, Liebeskind MJ, Alford B, Buchser WJ, et al. Identification of SARS-CoV-
382 2 spike mutations that attenuate monoclonal and serum antibody neutralization. *Cell Host*
383 *Microbe*. 2021 Mar 10;29(3):477-488.e4. doi: 10.1016/j.chom.2021.01.014.
- 384 12. Gräf T, Bello G, Venas TMM, Pereira EC, Paixão ACD, Appolinario LR, et al.
385 Identification of SARS-CoV-2 P.1-related lineages in Brazil provides new insights about
386 the mechanisms of emergence of Variants of Concern. [Internet]. 2021 Jun [cited 2021
387 Nov 30] <https://doi.org/10.21203/rs.3.rs-580195/v1> .
- 388 13. Varela APM, Prichula J, Mayer FQ, Salvato RS, Sant'Anna FH, Gregianini TS, Martins
389 LG, Seixas A, Veiga ABGD. SARS-CoV-2 introduction and lineage dynamics across
390 three epidemic peaks in Southern Brazil: massive spread of P.1. *Infect Genet Evol*. 2021
391 Dec;96:105144.
- 392 14. Oliveira MM, Schemberger MO, Suzukawa AA, Riediger IN, do Carmo Debur M,
393 Becker G, et al. Re-emergence of Gamma-like-II and emergence of Gamma-S:E661D

- 394 SARS-CoV-2 lineages in the south of Brazil after the 2021 outbreak. *Virology*. 2021 Nov
395 17;18(1):222.
- 396 15. Brazilian Institute of Geography and Statistics - Official Territorial Area - Federative
397 Unit Consultation [Internet]. 2010 [cited 2021 Oct 15] [https://www.ibge.gov.br/cidades-](https://www.ibge.gov.br/cidades-e-estados/sc.html)
398 [e-estados/sc.html](https://www.ibge.gov.br/cidades-e-estados/sc.html) .
- 399 16. Santa Catarina Epidemiological Surveillance Directorate [Internet]. 2020 Mar [cited 2021
400 Nov 7] <https://www.dive.sc.gov.br/> .
- 401 17. Eden J-S., Sim E. SARS-CoV-2 Genome Sequencing Using Long Pooled Amplicons on
402 Illumina Platforms. [Internet]. 2020 Apr 04 [cited 2021 Nov 24]
403 [https://www.protocols.io/view/sars-cov-2-genome-sequencing-using-long-pooled-amp-](https://www.protocols.io/view/sars-cov-2-genome-sequencing-using-long-pooled-amp-befyjbpw?step=81)
404 [befyjbpw?step=81](https://www.protocols.io/view/sars-cov-2-genome-sequencing-using-long-pooled-amp-befyjbpw?step=81) .
- 405 18. Young, E., Oakeson, K. Utah DoH ARTIC/Illumina Bioinformatic Workflow [Internet].
406 2021 Jan [cited 2021 Nov 28] [https://github.com/CDCgov/SARS-CoV-](https://github.com/CDCgov/SARS-CoV-2_Sequencing/tree/master/protocols/BFX-UT_ARTIC_Illumina)
407 [2_Sequencing/tree/master/protocols/BFX-UT_ARTIC_Illumina](https://github.com/CDCgov/SARS-CoV-2_Sequencing/tree/master/protocols/BFX-UT_ARTIC_Illumina) .
- 408 19. Bolger, A. M., Lohse, M., Usadel, B. Trimmomatic: a flexible trimmer for Illumina
409 sequence data. *Bioinformatics*. 2014 Aug 1;30(15):2114-20.
- 410 20. Li H, Durbin R. Fast and accurate short read alignment with Burrows-Wheeler transform.
411 *Bioinformatics*. 2009 Jul 15;25(14):1754-60.
- 412 21. Grubaugh ND, Gangavarapu K, Quick J, Matteson NL, De Jesus JG, Main BJ, et al. An
413 amplicon-based sequencing framework for accurately measuring intrahost virus diversity
414 using PrimalSeq and iVar. *Genome Biol*. 2019 Jan 8;20(1):8.
- 415 22. Danecek, P. *et al*. Twelve years of SAMtools and BCFtools. *Gigascience*. 2021 Feb
416 16;10(2):giab008.

- 417 23. Nextclade Web 1.10.0 [Internet]. 2020 Jun 11 [cited 2021 Nov 9].
418 <https://clades.nextstrain.org/> .
- 419 24. Pangolin COVID-19 Lineage Assigner [Internet]. 2021 [cited 2021 Nov 9].
420 <https://pangolin.cog-uk.io/> .
- 421 25. Oksanen J, Blanchet FG, Friendly M, Kindt R, Legendre P, McGlinn D, et al. Vegan:
422 Community Ecology Package. R package version 2.0-2 [Internet]. 2020 Nov 28 [cited
423 2021 Dec 5] <https://CRAN.R-project.org/package=vegan> .
- 424 26. Wickham, H. Ggplot2: Elegant Graphics for Data Analysis (ed. Springer-Verlag)
425 cheatsheet. New York; 2016.
- 426 27. Katoh K, Standley DM. A simple method to control over-alignment in the MAFFT
427 multiple sequence alignment program. *Bioinformatics*. 2016 Jul 1;32(13):1933-42.
- 428 28. Larsson A. AliView: a fast and lightweight alignment viewer and editor for large
429 datasets. *Bioinformatics*. 2014 Nov 15;30(22):3276-8.
- 430 29. Kalyaanamoorthy S, Minh BQ, Wong TKF, von Haeseler A, Jermiin LS. ModelFinder:
431 fast model selection for accurate phylogenetic estimates. *Nat Methods*. 2017
432 Jun;14(6):587-589.
- 433 30. Hoang DT, Chernomor O, von Haeseler A, Minh BQ, Vinh LS. UFBoot2: Improving the
434 Ultrafast Bootstrap Approximation, *Molecular Biol. Evol.* 2018 Feb;35(2):518–522.
- 435 31. Guindon S, Dufayard J-F, Lefort V, Anisimova M, Hordijk W, Gascuel O. New
436 Algorithms and Methods to Estimate Maximum-Likelihood Phylogenies: Assessing the
437 Performance of PhyML 3.0, *System. Biol.* 2010 May;59(3):307–321.

- 438 32. Minh BQ, Schmidt HA, Chernomor O, Schrempf D, Woodhams MD, von Haeseler A, et
439 al. IQ-TREE 2: New Models and Efficient Methods for Phylogenetic Inference in the
440 Genomic Era. *Mol Biol Evol.* 2020 May 1;37(5):1530-1534.
- 441 33. Yu G. Using ggtree to Visualize Data on Tree-Like Structures. *Curr Protoc*
442 *Bioinformatics.* 2020 Mar;69(1):e96.
- 443 34. Schneider AB, Ford CT, Hostager R, Williams J, Cioce M, Çatalyürek ÜV, et al.
444 StrainHub: a phylogenetic tool to construct pathogen transmission networks.
445 *Bioinformatics.* 2020 Feb 1;36(3):945-947.
- 446 35. Schrödinger, LLC. The PyMOL Molecular Graphics System, Version 2.0 [Internet]. 2017
447 Sep 20 [cited 2021 Nov 17] <https://pymol.org/2/> .
- 448 36. Naveca F, Nascimento V, Souza V, Corado A, Nascimento F, Silva G, et al. Phylogenetic
449 relationship of SARS-CoV-2 sequences from Amazonas with emerging Brazilian variants
450 harboring mutations E484K and N501Y in the Spike protein. *Genom. Epidemiol.*
451 [Internet]. 2021 Jan 11 [cited 2021 Nov 12] [https://virological.org/t/phylogenetic-
452 relationship-of-sars-cov-2-sequences-from-amazonas-with-emerging-brazilian-variants-
453 harboring-mutations-e484k-and-n501y-in-the-spike-protein/585](https://virological.org/t/phylogenetic-relationship-of-sars-cov-2-sequences-from-amazonas-with-emerging-brazilian-variants-harboring-mutations-e484k-and-n501y-in-the-spike-protein/585) .
- 454 37. Castro, M. C. *et al.* Spatiotemporal pattern of COVID-19 spread in Brazil. *Science.* 2021
455 May 21;372(6544):821-826.
- 456 38. Naveca FG, Nascimento V, de Souza VC, Corado AL, Nascimento F, Silva G, et al.
457 COVID-19 in Amazonas, Brazil, was driven by the persistence of endemic lineages and
458 P.1 emergence. *Nat Med.* 2021 Jul;27(7):1230-1238.
- 459 39. Lamarca AP, de Almeida LGP, Francisco RDS Jr, Lima LFA, Scortecci KC, Perez VP, et
460 al. Genomic surveillance of SARS-CoV-2 tracks early interstate transmission of P.1

- 461 lineage and diversification within P.2 clade in Brazil. *PLoS Negl Trop Dis*. 2021 Oct
462 13;15(10):e0009835.
- 463 40. Dejnirattisai, W *et al*. Antibody evasion by the P.1 strain of SARS-CoV-2. *Cell*. 2021
464 May 27;184(11):2939-2954.e9.
- 465 41. Tian W, Li D, Zhang N, Bai G, Yuan K, Xiao H, et al. O-glycosylation pattern of the
466 SARS-CoV-2 spike protein reveals an "O-Follow-N" rule. *Cell Res*. 2021
467 Oct;31(10):1123-1125.
- 468 42. Arnab Sarkar, Alok Kumar Chakrabarti, Shanta Dutta. *Pathogens*. Covid-19. Infection in
469 India: A Comparative Analysis of the Second Wave with the First Wave. *Pathogens*.
470 2021 Sep 21;10(9):1222.
- 471 43. Katarzyna J, Samuel A, Pascal A and Mondher T. On the association between SARS-
472 COV-2 variants and COVID-19 mortality during the second wave of the pandemic in
473 Europe. *Journal of Market Access & Health Policy*. 2021 VOL. 9, 2002008.
- 474 44. Sabino EC, Buss LF, Carvalho MPS, Prete CA Jr, Crispim MAE, Fraiji NA, et al.
475 Resurgence of COVID-19 in Manaus, Brazil, despite high seroprevalence. *Lancet*. 2021
476 Feb 6;397(10273):452-455.
- 477 45. Flaxman S, Mishra S, Gandy A, Unwin HJT, Mellan TA, Coupland H, et al. Estimating
478 the effects of non-pharmaceutical interventions on COVID-19 in Europe. *Nature*. 2020
479 Aug;584(7820):257-261.
- 480 46. da Silva SJR, Pena L. Collapse of the public health system and the emergence of new
481 variants during the second wave of the COVID-19 pandemic in Brazil. *One Health*. 2021
482 Dec;13:100287.

- 483 47. Kupek E. Low COVID-19 vaccination coverage and high COVID-19 mortality rates in
484 Brazilian elderly. *Rev Bras Epidemiol*. 2021 Sep 10;24:e210041.
- 485 48. Lumley SF, O'Donnell D, Stoesser NE, Matthews PC, Howarth A, Hatch SB, et al.
486 Antibody Status and Incidence of SARS-CoV-2 Infection in Health Care Workers. *N*
487 *Engl J Med*. 2021 Feb 11;384(6):533-540.
- 488 49. Malta M, Strathdee SA, Garcia PJ. The Brazilian tragedy: Where patients living at the
489 'Earth's lungs' die of asphyxia, and the fallacy of herd immunity is killing people.
490 *EClinicalMedicine*. 2021 Feb 12;32:100757.
- 491 50. Furlan L, Caramelli B. The regrettable story of the "Covid Kit" and the "Early Treatment
492 of Covid-19" in Brazil. *Lancet Reg Health Am*. 2021 Dec;4:100089.
- 493 51. Abella BS, Jolkovsky EL, Biney BT, Uspal JE, Hyman MC, Frank I, et al. Efficacy and
494 Safety of Hydroxychloroquine vs Placebo for Pre-exposure SARS-CoV-2 Prophylaxis
495 Among Health Care Workers - A Randomized Clinical Trial. *JAMA Intern Med*. 2021
496 Sep 30;181(2):195-202.
- 497 52. Popp M, Stegemann M, Metzendorf MI, Gould S, Kranke P, Meybohm P, Skoetz N,
498 Weibel S. Ivermectin for preventing and treating COVID-19. *Cochrane Database Syst*
499 *Rev*. 2021 Jul 28;7(7):CD015017.
- 500 53. Garcia LP, Duarte E. Nonpharmaceutical interventions for tackling the COVID-19
501 epidemic in Brazil. *Epidemiol Serv Saude*. 2020 Apr 9;29(2):e2020222.
- 502 54. Djin-Ye O, Silke B, Barbara B, Janine R, Frank S, Susanne D, Marianne W, Max VK,
503 MM, Thorsten W, Ralf D. Trends in respiratory virus circulation following COVID-19-
504 targeted nonpharmaceutical interventions in Germany, January - September 2020:
505 Analysis of national surveillance data. *Lancet Reg Health Eur*. 2021 Jul;6:100112.

506 55. Fongaro G, Stoco PH, Souza DSM, Grisard EC, Magri ME, Rogovski P, Schörner MA,
507 Barazzetti FH, Christoff AP, de Oliveira LFV, Bazzo ML, Wagner G, Hernández M,
508 Rodríguez-Lázaro D. The presence of SARS-CoV-2 RNA in human sewage in Santa
509 Catarina, Brazil, November 2019. *Sci Total Environ.* 2021 Jul 15;778:146198.

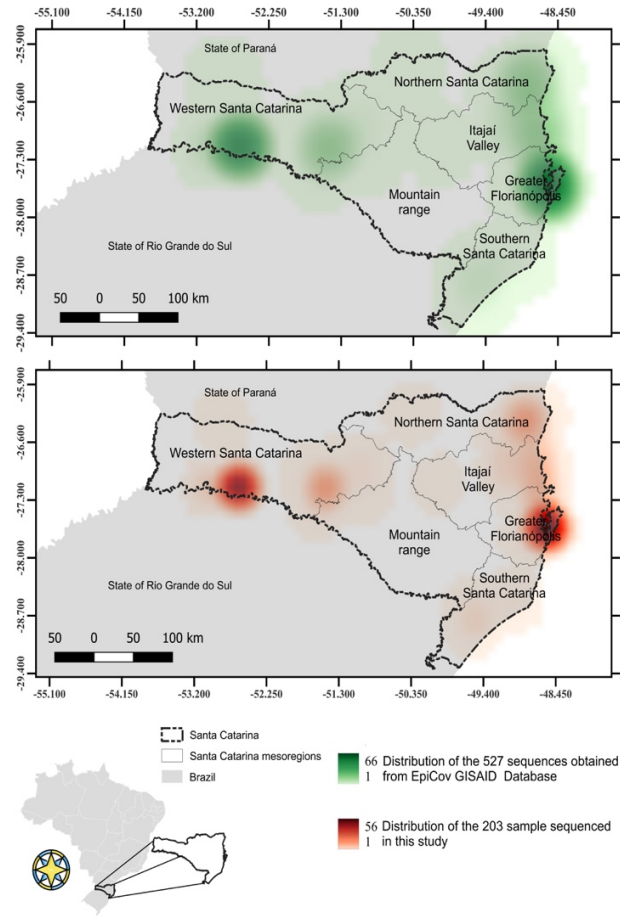
510

511 **Address for Correspondence**

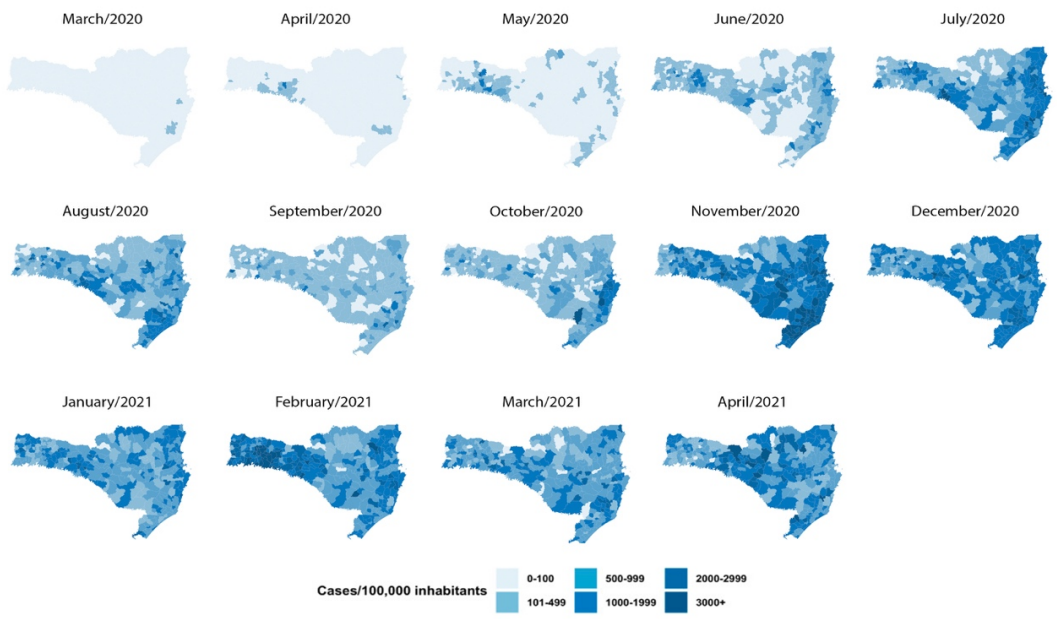
512 Address for correspondence: Glauber Wagner, Laboratório de Bioinformática, Departamento de
513 Microbiologia, Imunologia e Parasitologia (MIP), Centro de Ciências Biológicas (CCB),
514 Universidade Federal de Santa Catarina (UFSC), Campus João David Ferreira Lima, Bloco E,
515 Sala 207, Trindade, CEP 88040-900, Florianópolis, Santa Catarina, Brazil. Phone: +55 48 3721
516 2956. E-mail: glauber.wagner@ufsc.br

517

518



519 (A)



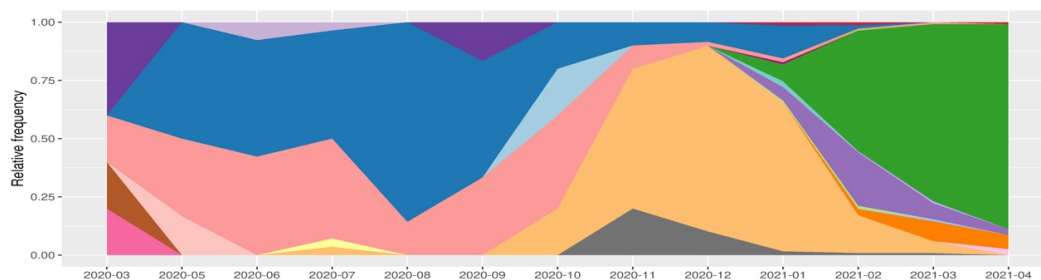
520
521 (B)

522 **Figure 1.** Distribution of sequenced SARS-CoV-2 genomes in Santa Catarina from March 1st,
523 2020 to April 30th 2021. **(A)** Map showing the Santa Catarina SARS-CoV-2 sequences obtained
524 from GISAD EpiCov Database (upper map) and samples sequenced in this study (lower map).
525 **(B)** Spatial and temporal evolution of COVID-19 cases in the state of Santa Catarina, according
526 to the Santa Catarina Epidemiological Surveillance Directorate (*16*) during the study period. The
527 Greater Florianópolis and the Western Santa Catarina mesoregions were the most represented
528 because they presented the highest cases / 100,000 habitants rates between January 1st 2021 and
529 April 30th 2021.

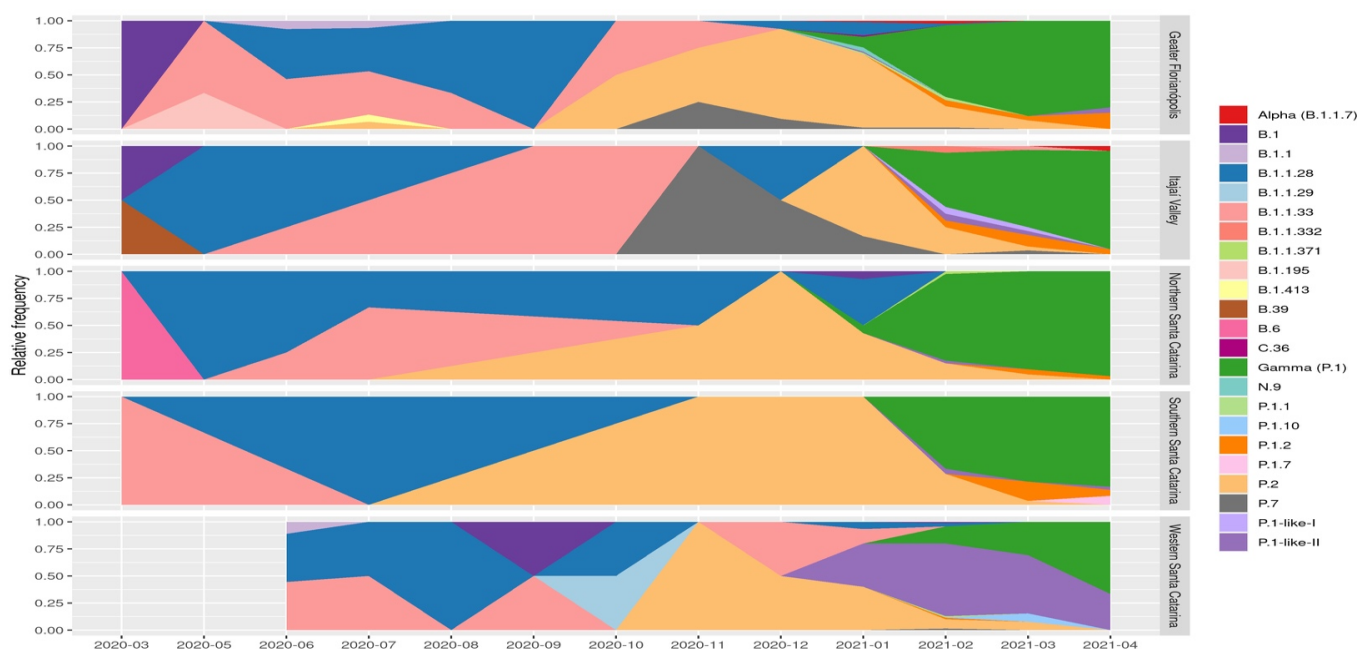
530

531

532
533
534



(A)

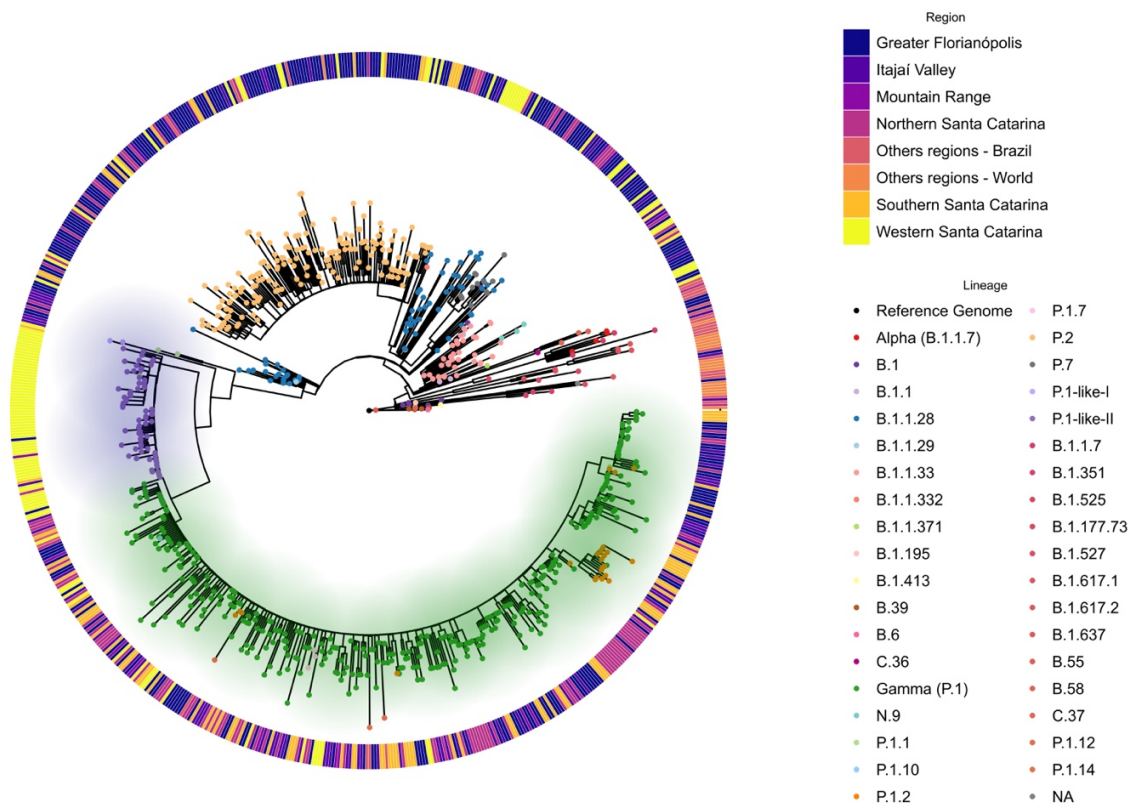


(B)

535
536
537

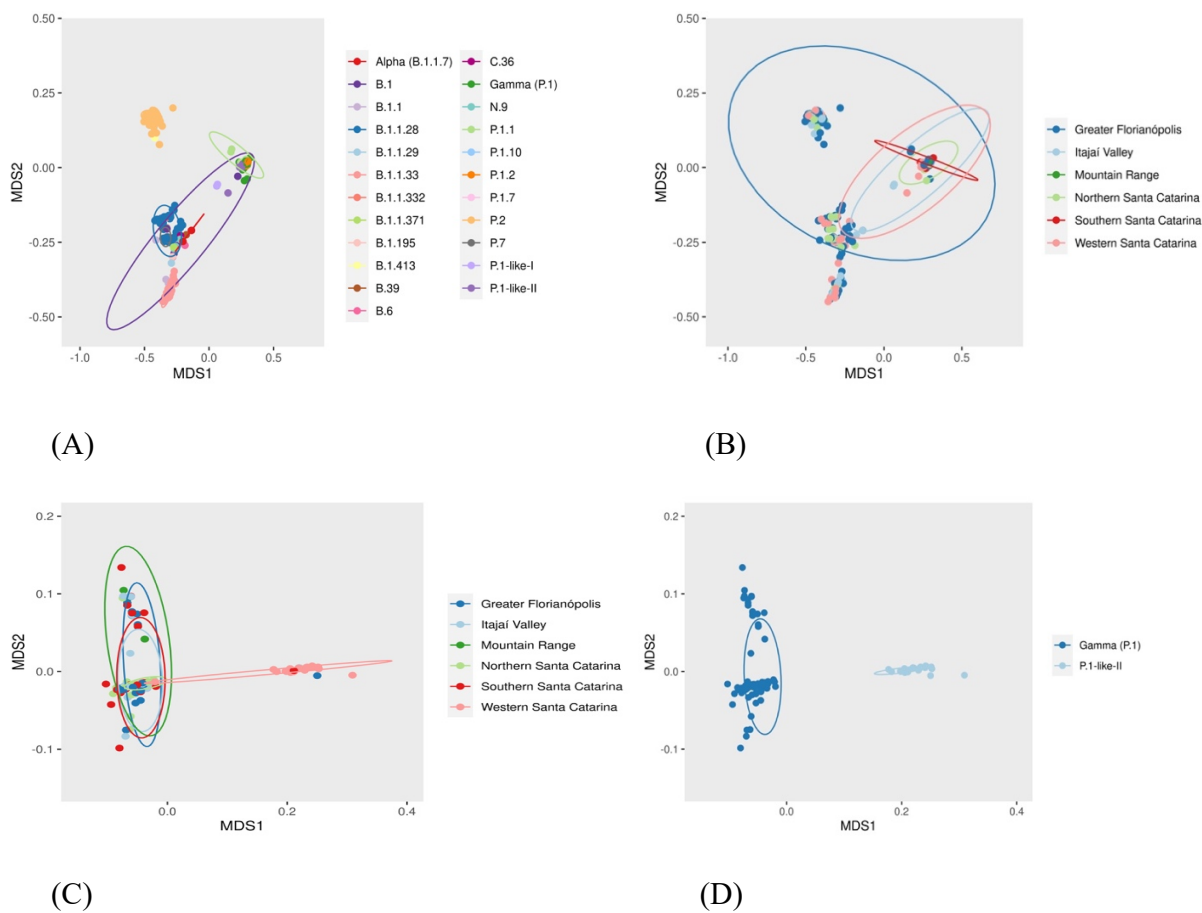
538 **Figure 2.** SARS-CoV-2 variants profile in the state of Santa Catarina from March to April
539 2021. **(A)** Analysis of the variant profile considering the whole state of Santa Catarina. **(B)** The
540 variant profile by Santa Catarina mesoregion. From March to September 2020, the variants
541 identified were in the highest proportion of B.1.1.28 (Blue) and B.1.1.33 (Light red). From
542 September 2020 to January 2021, the highest proportion was of P.2 variant, followed by VOC
543 Gamma and related lineages from February to April 2021.

544



545

546 **Figure 3.** Phylogenomic reconstruction analysis of Santa Catarina SARS-CoV-2 sequences from
 547 March 1st, 2020 to April 30th 2021. Maximum likelihood (ML) phylogenetic tree was
 548 reconstructed using GTR+F+I substitution model, with 1000 iterations in Ultra-Fast Bootstrap
 549 mode with SH-like approximate likelihood ratio test (SH-aLRT). All 779 sequences were aligned
 550 with 49 reference sequences of distinct SARS-CoV-2 variants available in GISAID. Dots
 551 represent the variant or lineages indicated on the right-bottom legend. According to the right-up
 552 legend, the outside bars indicate the sample mesoregion of Santa Catarina or others. The green
 553 shadow indicates the VOC Gamma and related lineages (P.1.1, P1.2, P.1.10 and P.1.7) clade.
 554 Lilac shadow indicates the P.1-like-II clade.



555

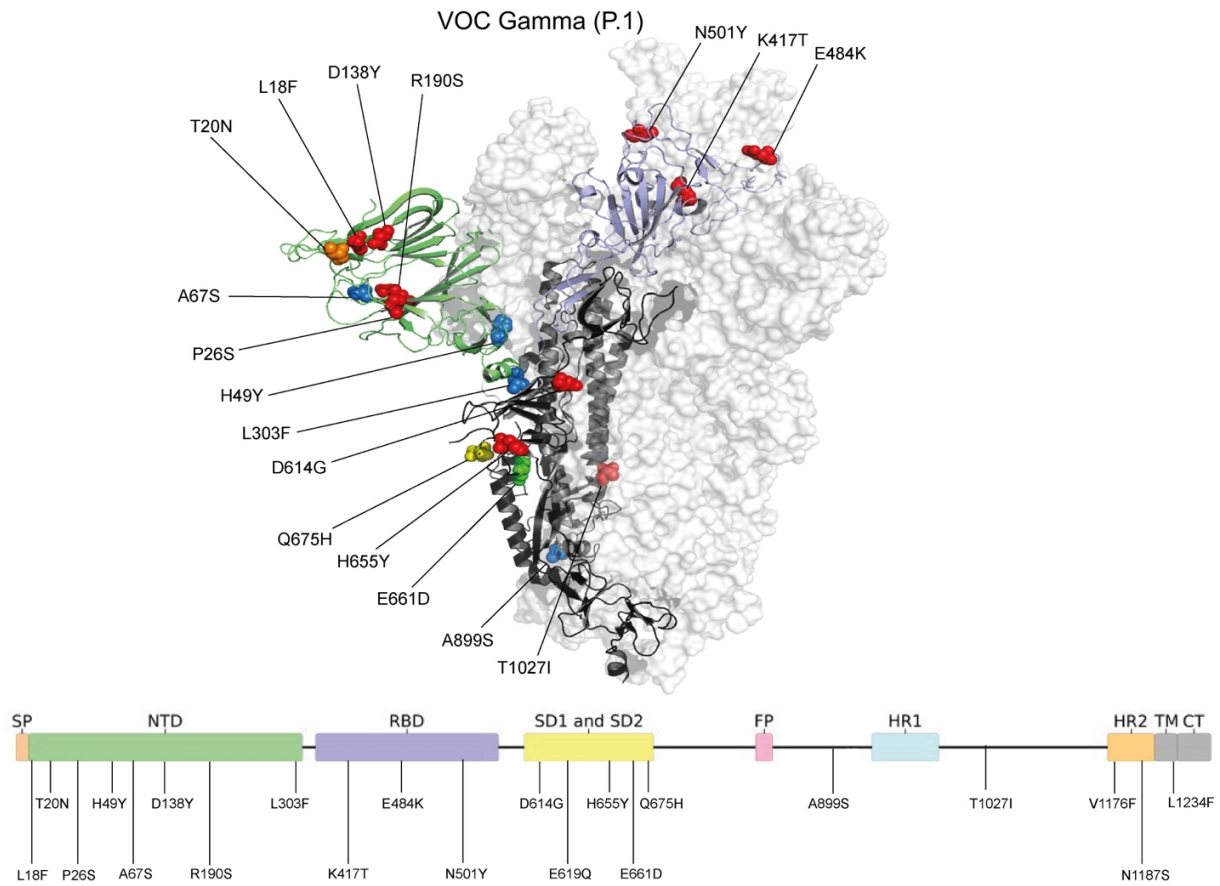
556

557

558

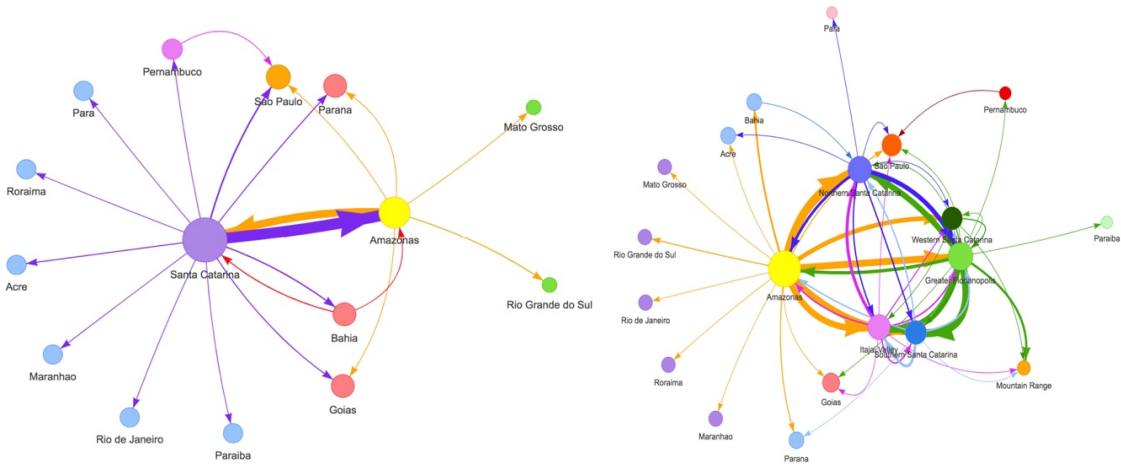
559 **Figure 4.** Multidimensional scale (MDS) plot of Jaccard dissimilarity matrix between genomes
560 based on the presence and absence of mutations, deletions, and insertions labeled by (A) variants
561 and (B) region. Only VOC Gamma and related lineages MDS analysis labeled by (C) region and
562 (D) variant or lineages.

563



564

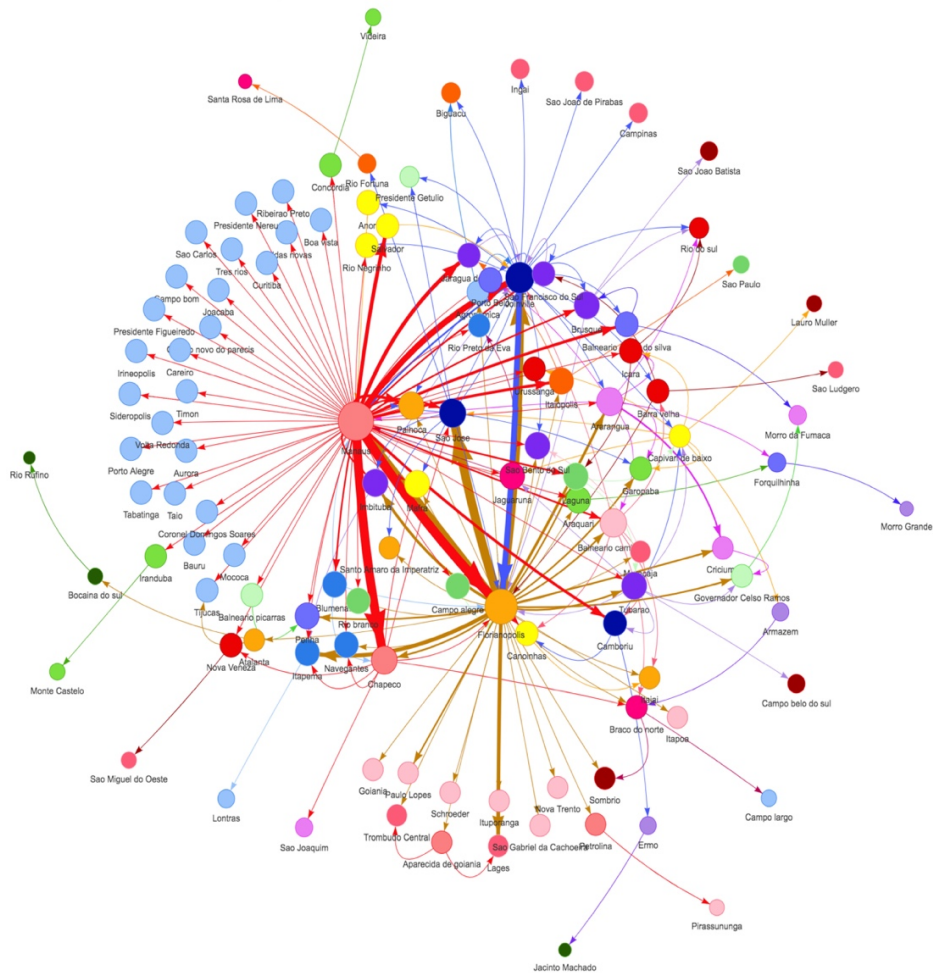
565 **Figure 5.** Overlay of VOC Gamma Spike protein mutations identified in the state of Santa
 566 Catarina during the COVID-19 pandemic. Residues involved in mutations are presented as
 567 spheres, colored from blue to red (low to high mutation frequency). The mutation sites are also
 568 indicated in the two-dimensional representation of the Spike protein, which is colored according
 569 to protein regions. The NTD domain is colored in green and the RBD domain is colored in
 570 purple. From the total of 778 analyzed sequences of the VOC Gamma variant (5' – 3'), red
 571 represents the frequency of 93.6-100%, orange the frequency of 88.8%, yellow the frequency of
 572 3.98%, green the frequency of 1.79%, and blue the frequency of less than 1%. Image generated
 573 using PyMOL version 2.3.3 (43).



574

575 (A)

(B)

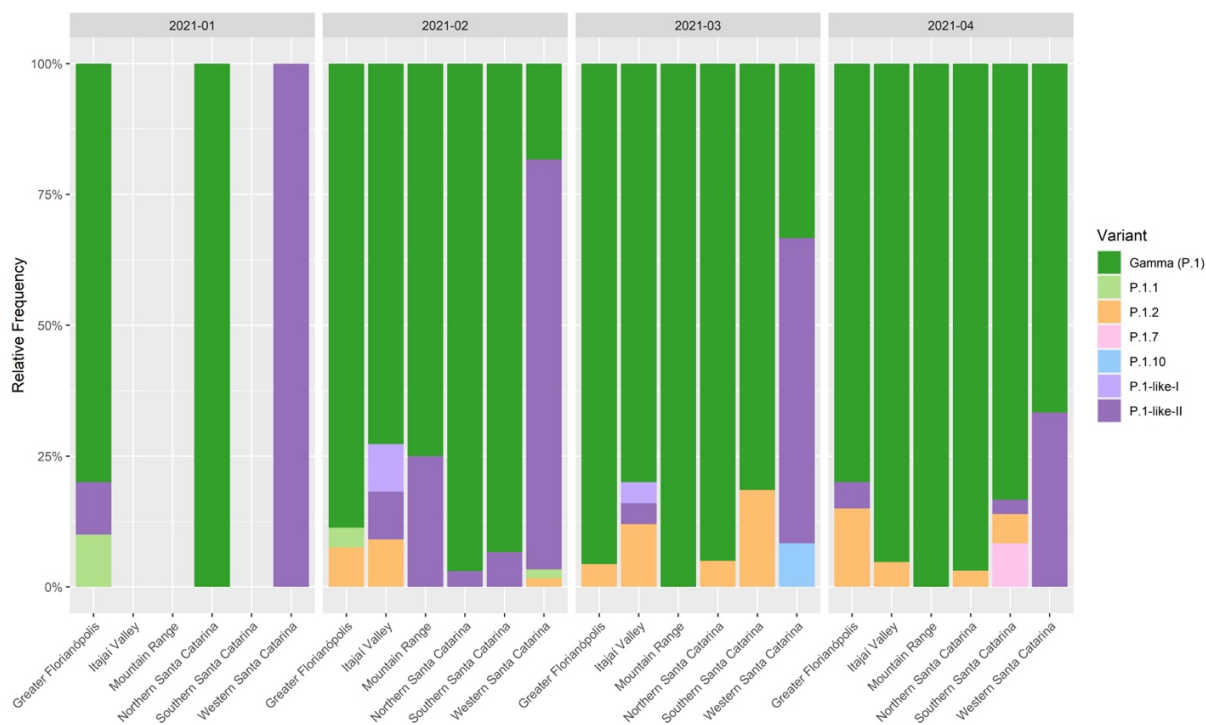


576

577 (C)

578 **Figure 6.** Network analysis of VOC Gamma and related lineages sequenced in the state of Santa
579 Catarina, Brazil, from January 3rd, 2020 to April 30th 2021 with the other Brazilian states. The
580 ML analysis was performed on 13,018 Brazilian VOC Gamma related genomes obtained from
581 GISAID until April 30th, 2021 and 316 and submitted to StrainHub (42) analysis considering the
582 closeness parameter. The sizes of nodes are scaled by closeness metric and the arrows reflect the
583 directionality of possible transmissions between the Brazilian states (**A**), Santa Catarina
584 mesoregions (**B**) and Santa Catarina cities (**C**). The thickness of the lines and arrows represents
585 the frequency of putative transmissions.

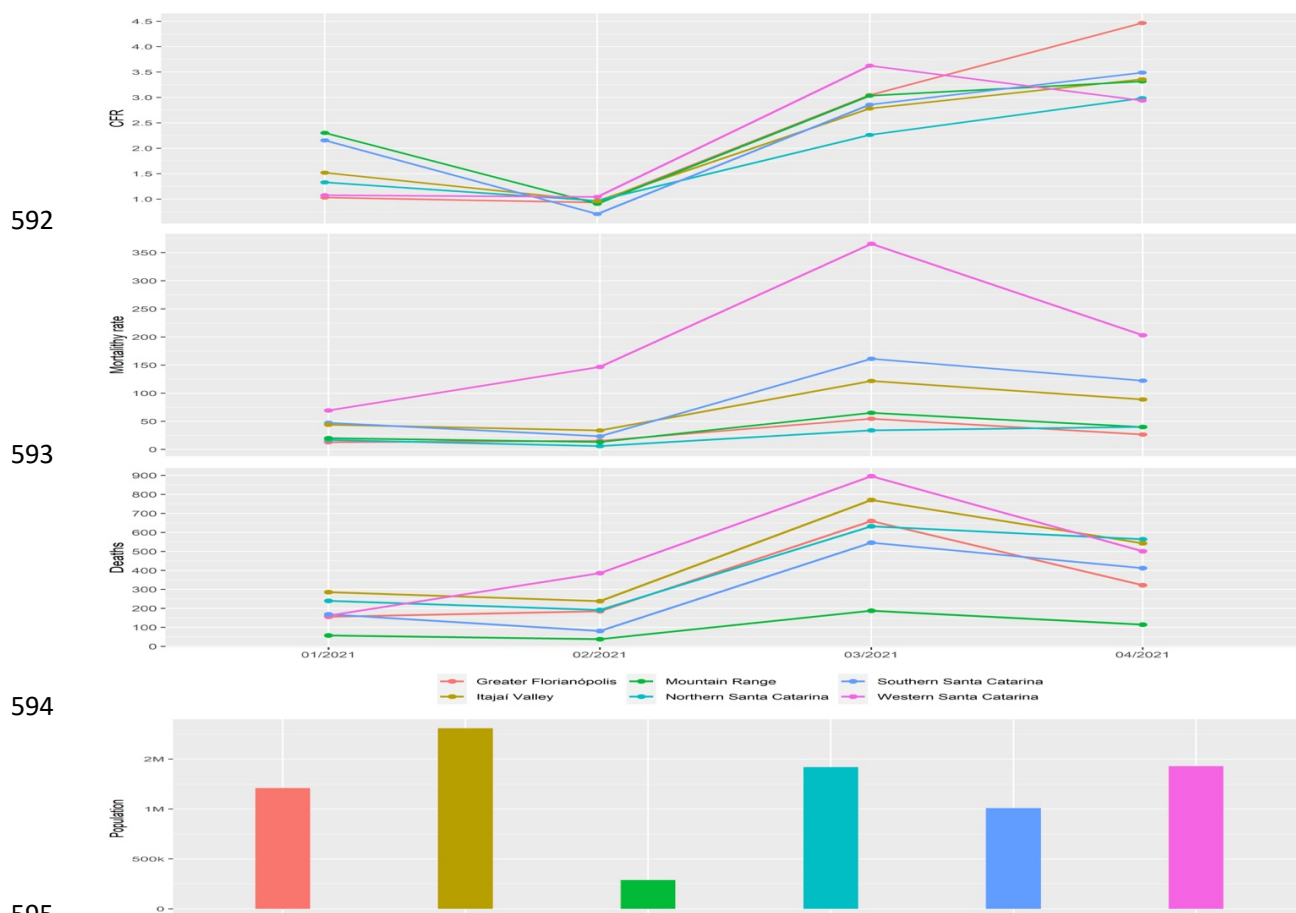
586



587

588 **Figure 7:** Relative frequencies of the SARS-CoV-2 VOC Gamma and related lineages by
 589 mesoregions of the state of Santa Catarina during the second wave of the COVID-19 pandemic,
 590 January to April 2021.

591



597 **Figure 8.** Epidemiological data from each mesoregion of the state of Santa Catarina during the
 598 second COVID-19 pandemic wave (January 2020 to April 2021). Case fatality rate (CFR),
 599 mortality rate, number of deaths and population size. Data source: Santa Catarina
 600 Epidemiological Surveillance Directorate (16).

601

602 **Supplemental Materials**

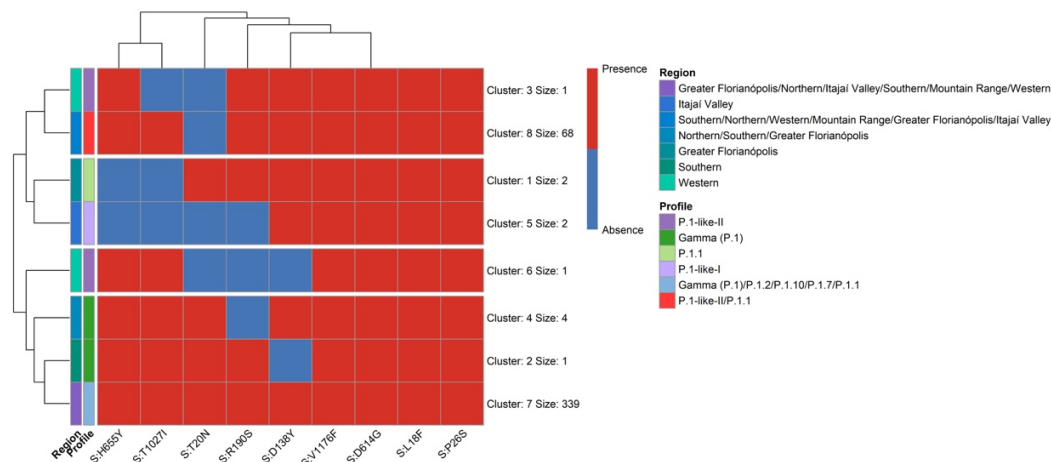
603 **Supplemental Materials**

604 **Supplementary Table 1.** Synthesis of 203 samples sequenced in the present study. Sequence
605 name, GISAD accession numbers, city, mesoregion, age, gender, variant and clade assignment.

606 **Supplementary Table 2.** List of GISAD accession numbers of sequences used on ML analysis,
607 by Pangolin lineage.

608 **Supplementary Table 3.** GISAD accession numbers of sequences used on Santa Catarina VOC
609 Gamma and related lineages network analysis.

610



611

612 **Supplementary Figure 1.** The non-synonymous amino acid substitution profile of the VOC
613 Gamma and related lineages genomes in the state of Santa Catarina from January 3rd 2020 to
614 April 30th 2021.

