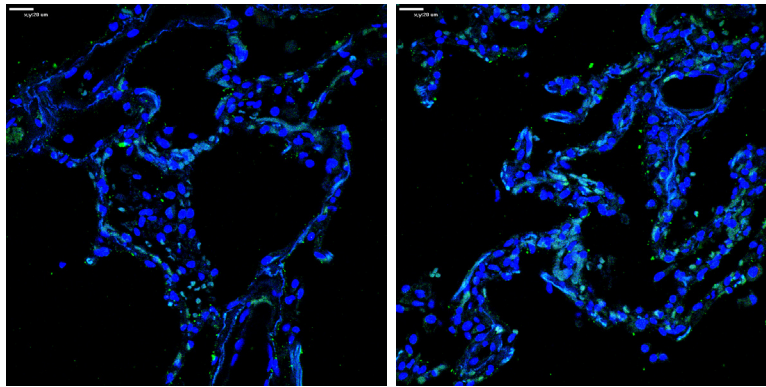
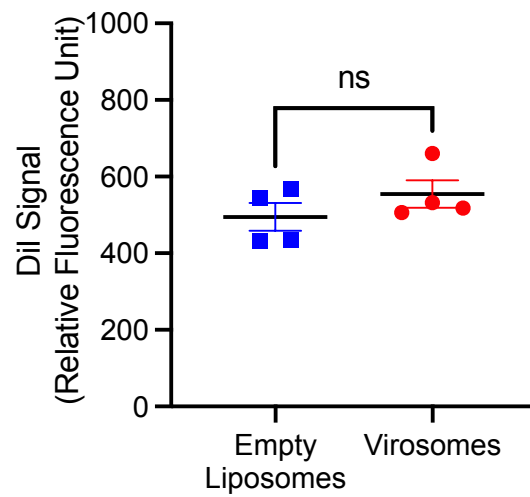


KIM-1 SARS Nucleocapsid Protein DAPI

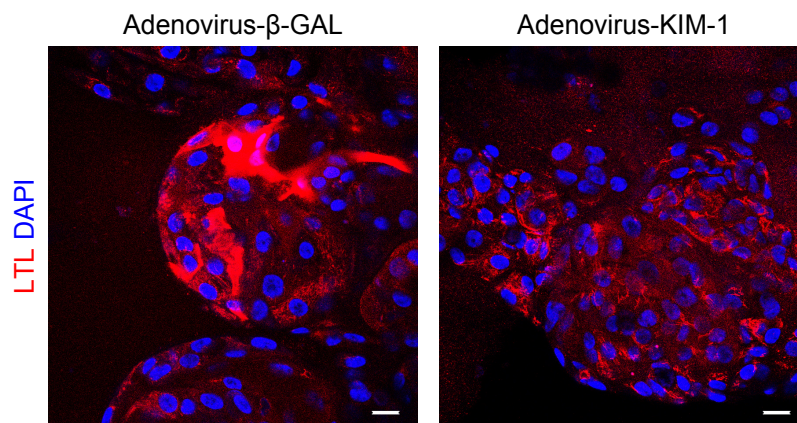
Non COVID-19 Lung Autopsy



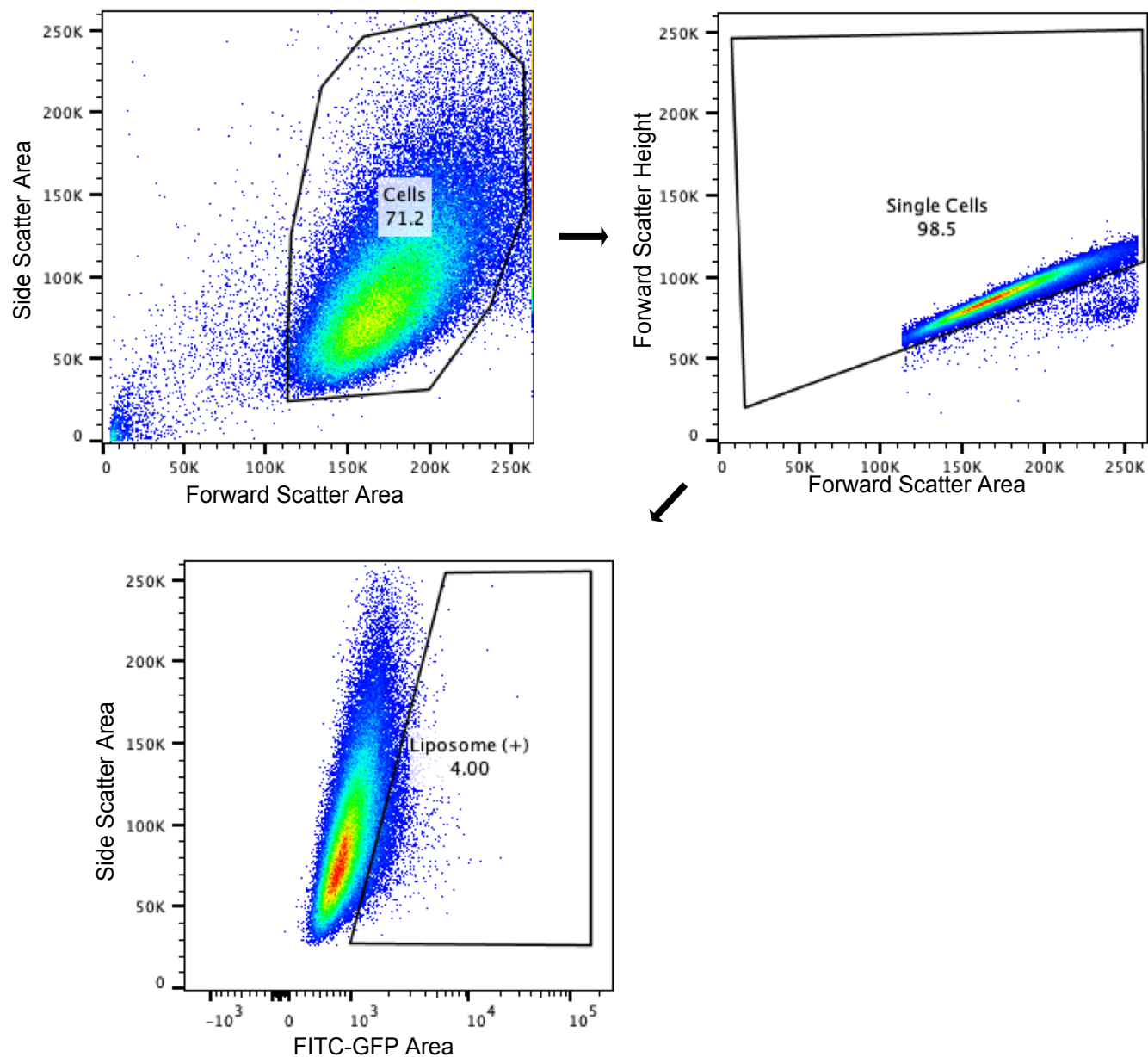
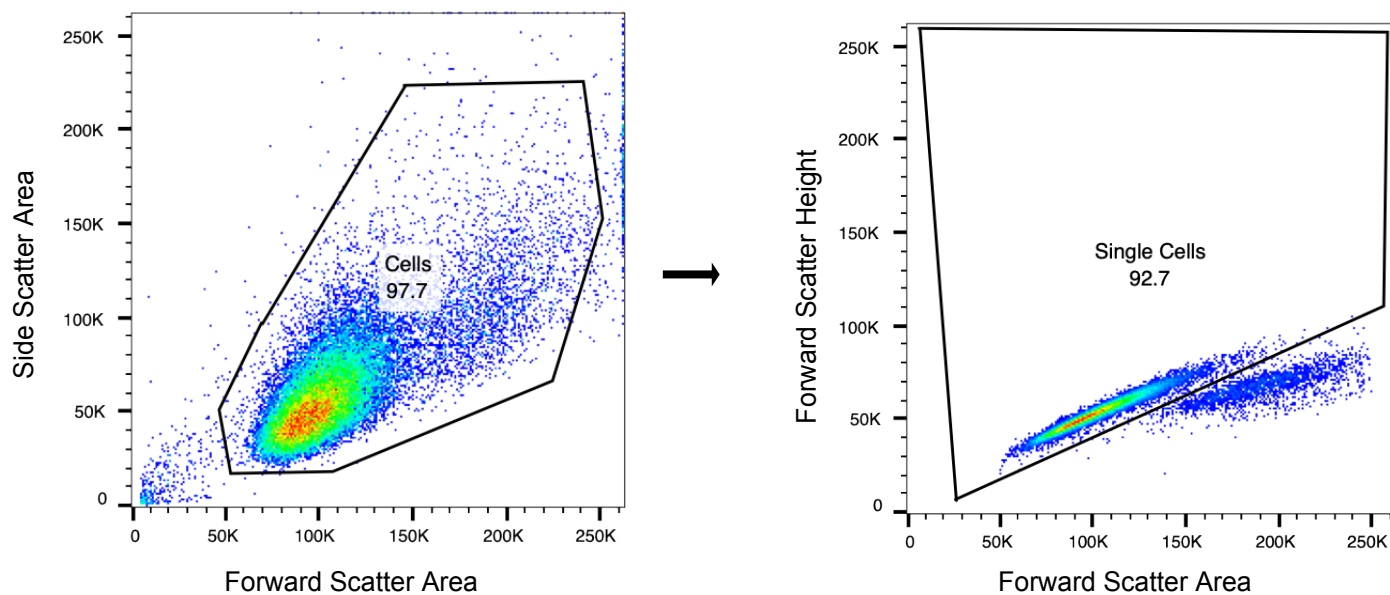
Supplementary Figure 1. Non COVID-19 lungs expresses very low amount of KIM-1. Immunostaining of KIM-1 and SARS Nucleocapsid Protein. Scale bars: 20 µm.



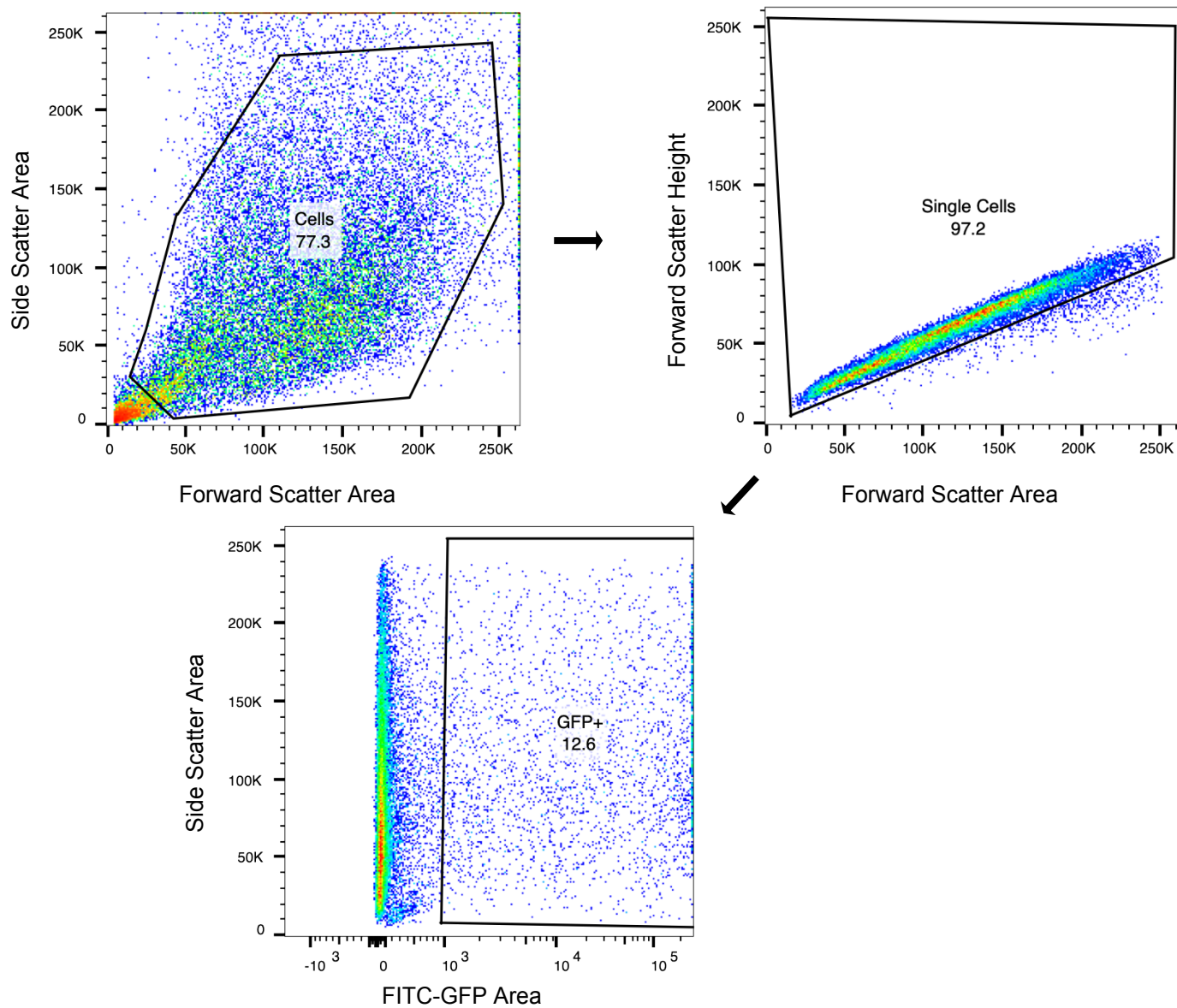
Supplementary Figure 2. No significant difference was observed between Dil signal from labeled empty liposomes and labeled virosomes. Dil signal was detected by using fluorescence plate reader. $p=0.1427$.



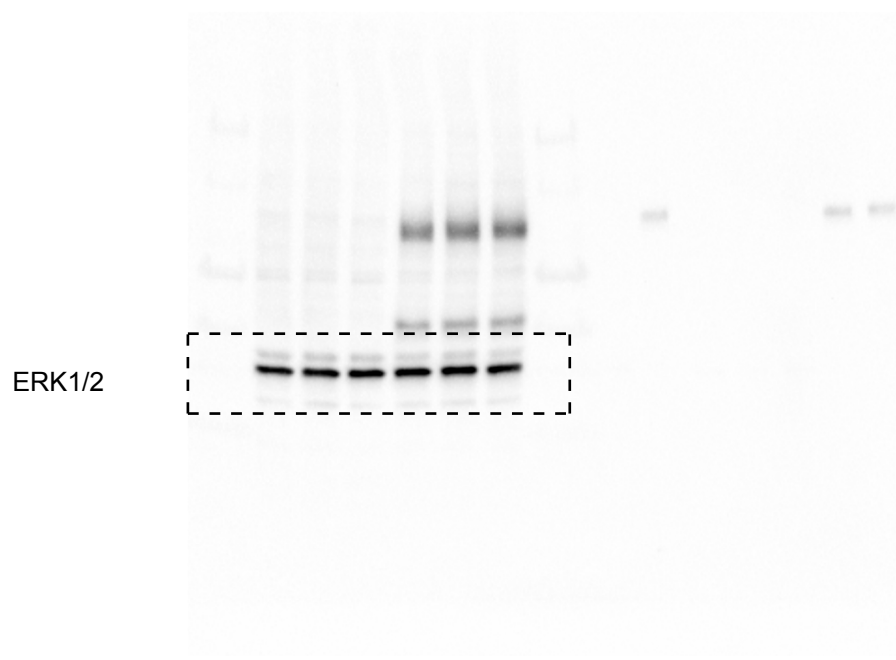
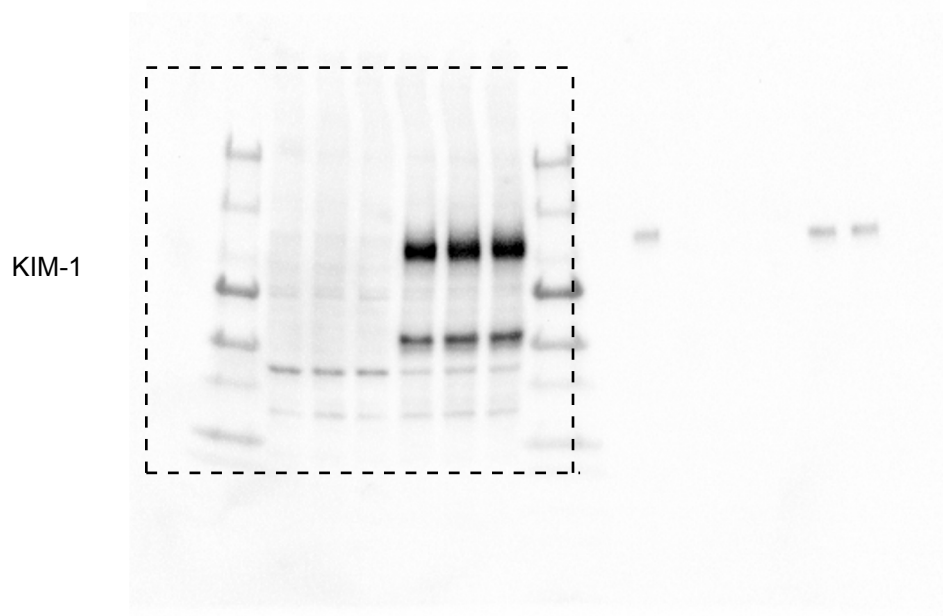
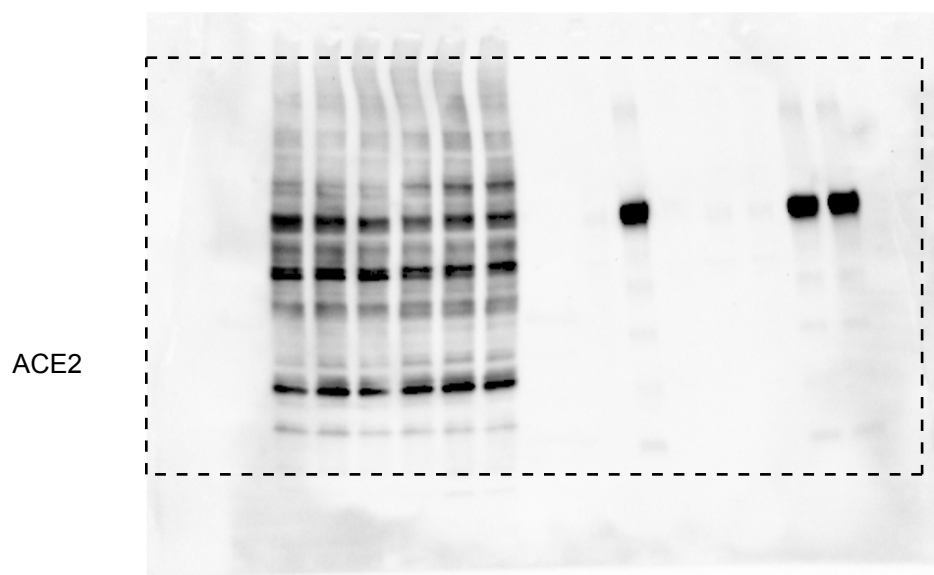
Supplementary Figure 3. Adenovirus-KIM-1 infection decreases Lotus tetragonolobus lectin (LTL) expression when compared with Adenovirus-β-gal infection of tubuloids.

a**b**

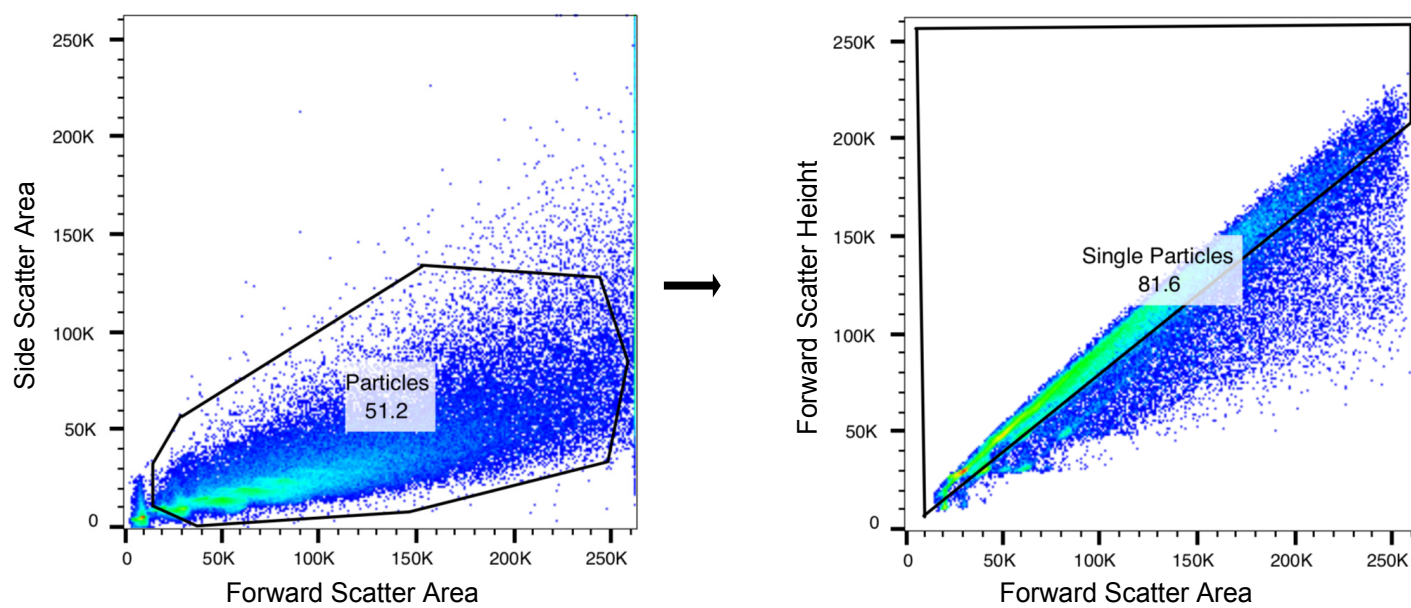
Supplementary Figure 4. Gating Strategy for flow cytometry for cells. (a) Gating strategy on the analysis of virosome (or control liposome)-treated A549 cells for **Fig. 2b**. (b) Gating strategy on the analysis of virosome-treated A549 cells for **Fig. 2e**.



Supplementary Figure 5. Gating Strategy for flow cytometry for tubuloids. Gating strategy on the analysis of virosome-treated and digested human renal tubuloids (**Fig.4f**).



Supplementary Figure 6. Whole membrane images of western blotting in Fig. 3c.
The areas surrounded by the dotted line are shown as **Fig. 3c**.



Supplementary Figure 7. Gating Strategy for flow cytometry for fluorospheres. Gating strategy on the analysis of *in vitro* binding assay (Fig. 5).