

## SUPPORTING INFORMATION

### **An integrated lab-on-a-chip device for RNA extraction, amplification and CRISPR-Cas12a-assisted detection for COVID-19 screening in resource-limited settings**

Bongkot Ngamsom<sup>a</sup>, Alexander Iles<sup>a</sup>, Moses Kamita<sup>b</sup>, Racheal Kimani<sup>b</sup>, Pablo Rodriguez-Mateos<sup>a</sup>, Mary Mungai<sup>c</sup>, Charlotte E. Dyer<sup>d</sup>, Cheryl Walter<sup>d</sup>, Jesse Gitaka<sup>b,1,\*</sup>, Nicole Pamme<sup>a,e,1,\*</sup>

<sup>a</sup>Department of Chemistry and Biochemistry, University of Hull, Hull, HU6 7RX, UK

<sup>b</sup>Directorate of Research and Innovation, Mount Kenya University, Thika, Kenya

<sup>c</sup>Centre for Virus Research, Kenya Medical Research Institute, Nairobi, Kenya

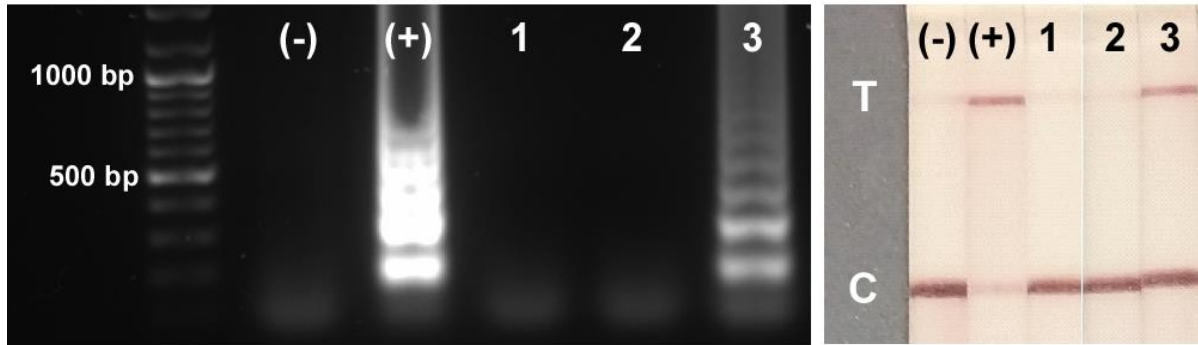
<sup>d</sup>Department of Biomedical Sciences, University of Hull, Hull, HU6 7RX, UK

<sup>e</sup>Department of Materials and Environmental Chemistry, Stockholm University, SE-106 91, Sweden

<sup>1</sup>To whom correspondence should be addressed. Email: [nicole.pamme@mmk.su.se](mailto:nicole.pamme@mmk.su.se); [jgitaka@mku.ac.ke](mailto:jgitaka@mku.ac.ke).

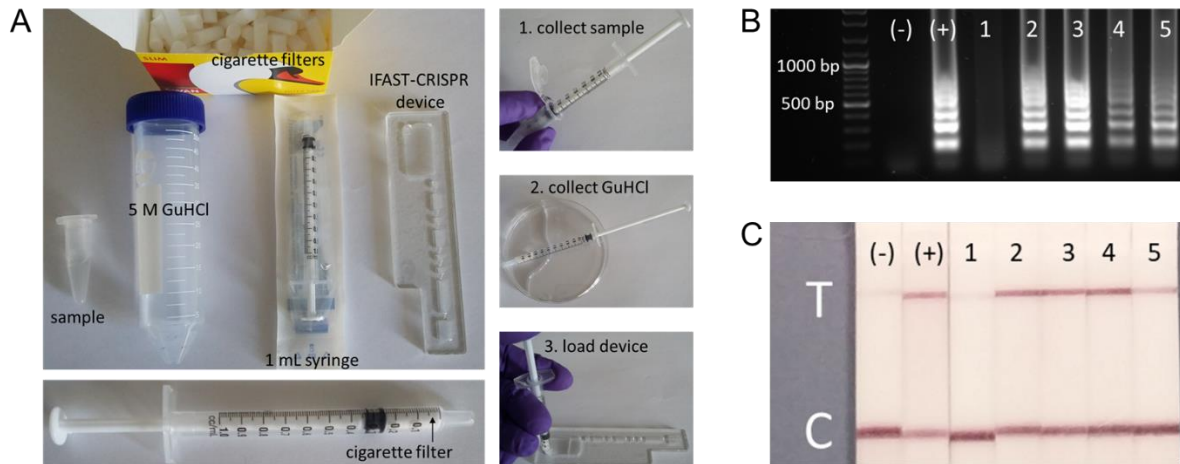
\*Joint senior authors

### RNA extraction from viral particles using silica paramagnetic beads and GuHCl solution



**Fig. S1** Gel electrophoresis of tube-based RT-LAMP, and lateral flow test strips from CRISPR-Cas12a detection of RT-LAMP products. Samples: (-) = NTC; (+) = 470 copies of genomic SARS-CoV-2 (free RNA); 1 = 100 copies mL<sup>-1</sup> of SARS-CoV-2 verification panel; 2 = MB + SARS-CoV-2 verification panel in nuclease-free water (1000 copies mL<sup>-1</sup>); 3 = MB + SARS-CoV-2 verification panel in 5 M GuHCl (1,000 copies mL<sup>-1</sup>). Incubation time for MB and SARS-CoV-2 verification panel = 10 min. RT-LAMP was performed at 64 °C for 35 min using primers targeting N gene. CRISPR-Cas12a assays were carried out at 37 °C for 10 min.

## Cigarette filter coupled with IFAST-CRISPR/Cas device for saliva collection and SARS-CoV-2 detection



**Fig. S2** A) Interfacing of Swan brand cigarette filter for sample collection and IFAST-CRISPR on-chip assays. B) Gel electrophoresis of tube-based RT-LAMP, and C) lateral flow test strips from CRISPR-Cas12a detection of RT-LAMP products. Samples: (-) = NTC; (+) = 470 copies of genomic SARS-CoV-2 (free RNA); 1 = 100 copies mL<sup>-1</sup> of SARS-CoV-2 verification panel; 2 = MB + SARS-CoV-2 verification panel in nuclease-free water (1,000 copies mL<sup>-1</sup>); 3 = MB + SARS-CoV-2 verification panel in 5 M GuHCl (1,000 copies mL<sup>-1</sup>). Incubation time for MB and SARS-CoV-2 verification panel = 10 min. RT-LAMP was performed at 64 °C for 35 min using primers targeting N gene. CRISPR-Cas12a assays were carried out at 37 °C for 10 min.

**Table S1.** Cost breakdown for device and reagents.

	Component	Supplier	Amount per purchase unit		Required amount per device/assay		Number of device/assay per unit	Unit price (USD)	Price per device/assay (USD)
			value	unit	value	unit			
Device materials	PMMA device	Kingston Plastics	1	sheet	0.05	sheet	20	4.70	0.24
	Adhesive PCR plate seals	ThermoFisher Scientific	100	sheet	0.5	sheet	200	115.73	0.58
Reagents	MagnesiI Beads	Promega	25	mL	0.001	mL	25,000	223.49	0.01
	GuHCl	Promega	100	g	0.478	g	209.36	61.91	0.30
	Milenia HybriDetect 1 Lateral flow strips	TwistDx	100	strip	1	strip	100	296.26	2.96
	LbCas12a	New England Biolabs	70	μL	1	μL	70	87.46	1.25
	gRNA – N gene	Eurofins	122,048	μL	1.25	μL	152,560	603.01	0.004
	gRNA – E gene	Eurofins	122,048	μL	1.25	μL	152,560	262.28	0.0017
	gRNA – RNase P	Eurofins	122,048	μL	1.25	μL	152,560	262.28	0.0017
	LF reporter	Integrated DNA Technologies	2107	μL	0.5	μL	4,214	79.84	0.02
	LAMP primers – N gene FIP	Integrated DNA Technologies	931	μL	0.4	μL	2,328	4.96	0.002
	LAMP primers – N gene BIP	Integrated DNA Technologies	956	μL	0.4	μL	2,390	4.72	0.002
	LAMP primers – N gene F3	Integrated DNA Technologies	10,250	μL	0.05	μL	205,000	2.18	1.06E-05
	LAMP primers – N gene B3	Integrated DNA Technologies	11,000	μL	0.05	μL	220,000	2.66	1.21E-05
	LAMP primers – N gene LF	Integrated DNA Technologies	3,675	μL	0.1	μL	36,750	2.3	6.26E-05
	LAMP primers – N gene LB	Integrated DNA Technologies	4,525	μL	0.1	μL	45,250	2.18	4.82E-05
	LAMP primers – E gene FIP	Integrated DNA Technologies	931	μL	0.4	μL	2,328	4.96	0.002
	LAMP primers – E gene BIP	Integrated DNA Technologies	956	μL	0.4	μL	2,390	4.72	0.002
	LAMP primers – E gene F3	Integrated DNA Technologies	10,250	μL	0.05	μL	205,000	2.18	1.06E-05
	LAMP primers – E gene B3	Integrated DNA Technologies	11,000	μL	0.05	μL	220,000	2.66	1.21E-05

	LAMP primers – E gene LF	Integrated DNA Technologies	3,675	μL	0.1	μL	36,750	2.3	6.26E-05
	LAMP primers – E gene LB	Integrated DNA Technologies	4,525	μL	0.1	μL	45,250	2.18	4.82E-05
	LAMP primers – RNase P - FIP	Integrated DNA Technologies	931	μL	0.4	μL	2,328	4.96	0.002
	LAMP primers – RNase P - BIP	Integrated DNA Technologies	956	μL	0.4	μL	2,390	4.72	0.002
	LAMP primers – RNase P – F3	Integrated DNA Technologies	10,250	μL	0.05	μL	205,000	2.18	1.06E-05
	LAMP primers – RNase P – B3	Integrated DNA Technologies	11,000	μL	0.05	μL	220,000	2.66	1.21E-05
	LAMP primers – RNase P - LF	Integrated DNA Technologies	3,675	μL	0.1	μL	36,750	2.3	6.26E-05
	LAMP primers – RNase P - LB	Integrated DNA Technologies	4,525	μL	0.1	μL	45,250	2.18	4.82E-05
	Bst 2.0 DNA polymerase	New England Biolabs	200	μL	1	μL	200	96.85	0.48
	Warmstart RTx Reverse Transcriptase	New England Biolabs	25	μL	0.5	μL	50	87.46	1.75
	dNTP mix	New England Biolabs	800	μL	3.5	μL	228.57	87.46	0.38
								<b>Total</b>	<b>7.99</b>