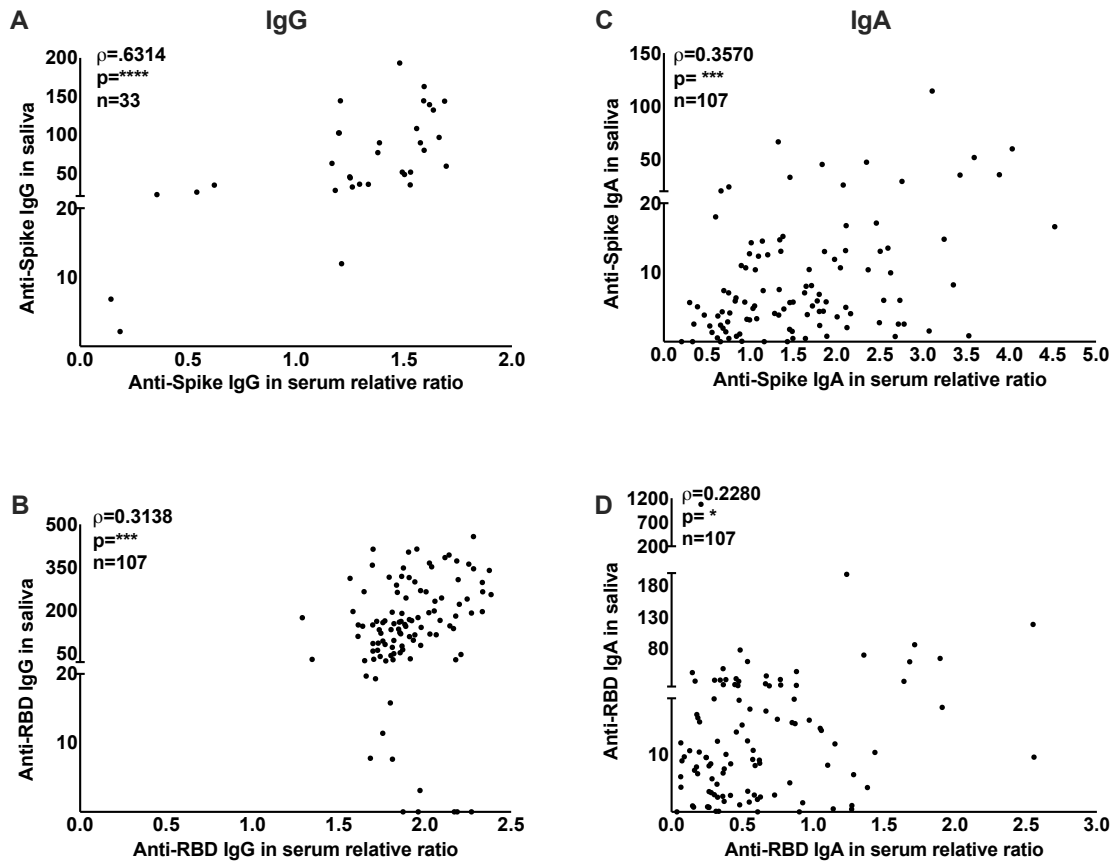


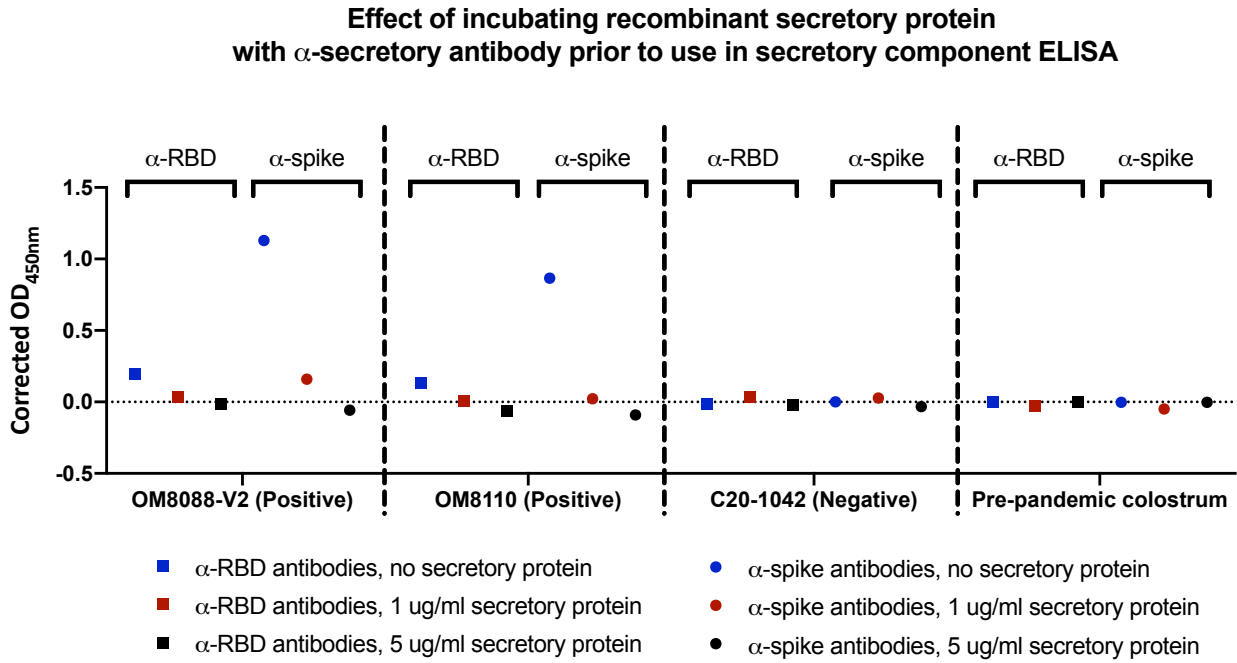
**Supplementary Fig. 1. Study Design**

Two observational cohorts (LTCH staff, MSB) a prospective cohort (LTCH Residents), and a case-control cohort (Sheba Medical Center HCW) were integrated into our overall study of mRNA/mRNA vaccinated subjects.



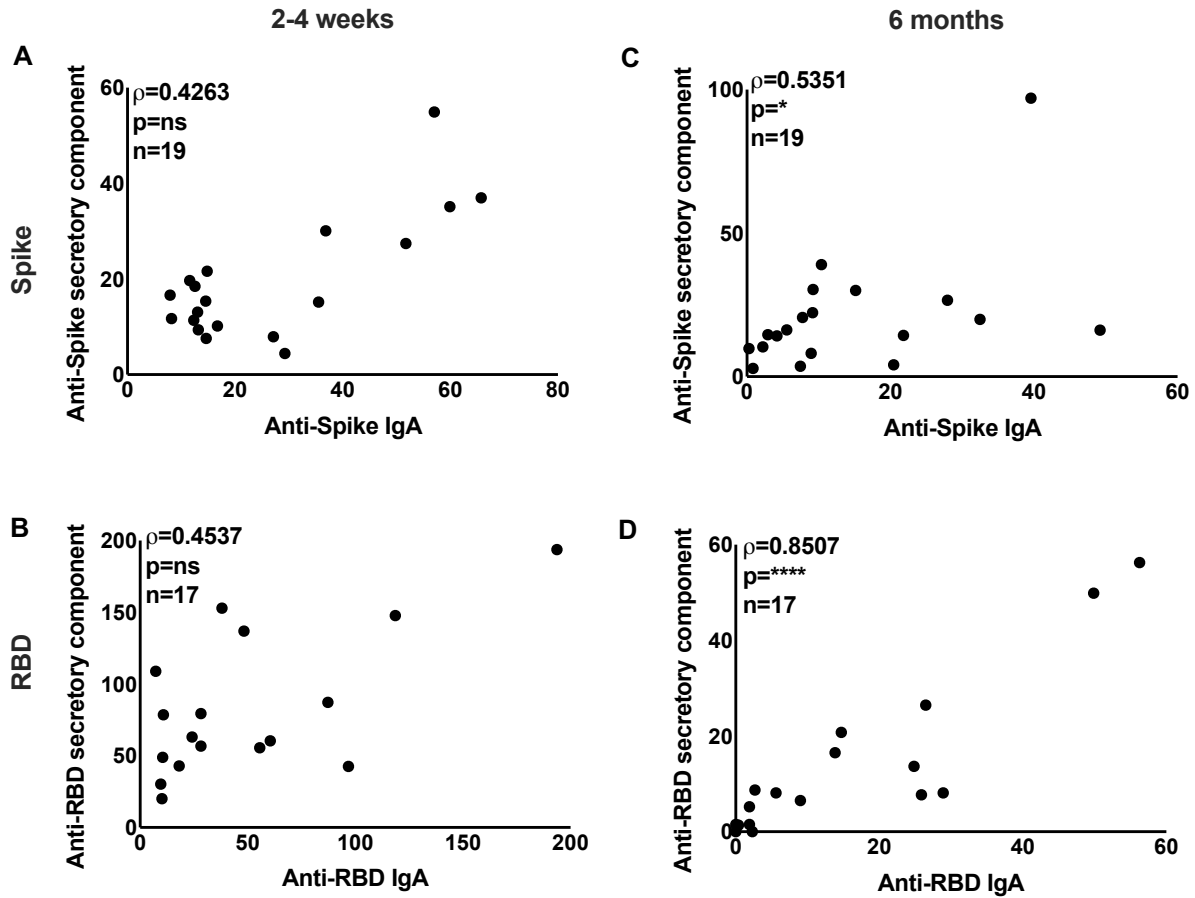
**Supplementary Fig. 2. Correlation of anti-spike and anti-RBD antibodies in the saliva and serum 2-4 weeks after mRNA vaccination**

Subjects from the LTCH cohort were sampled 2-4 weeks after their second dose of COVID-19 mRNA vaccination. Anti-Spike (A,C) and anti-RBD (B,D) IgG and IgA were analyzed in serum and saliva via an ELISA-based method. A Spearman test was used to calculate the correlation coefficient for each plot. During analysis of anti-Spike IgG (A) in the serum of LTCH subjects, we observed oversaturation of signal, and thus repeated the analysis for anti-Spike IgG using a lower concentration on a subset ( $n=33$ ) of samples which is what is shown here.  $*$ = $p<0.05$ ,  $***$ = $p<0.001$  and  $****$ = $p<0.0001$ .



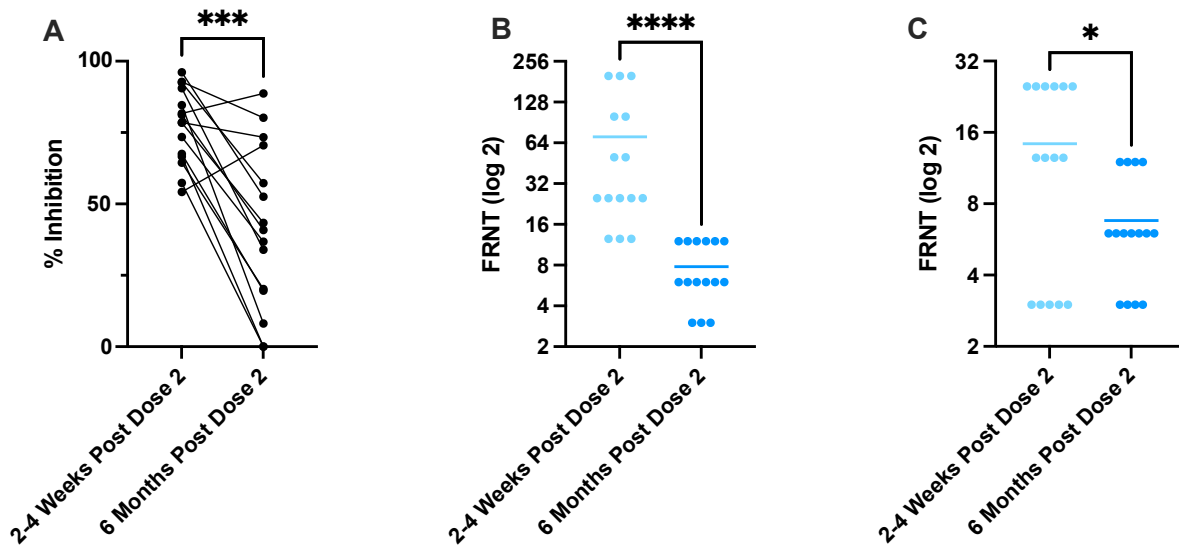
**Supplementary Fig. 3. Detection of secretory component associated with Spike/RBD-specific antibodies from COVID-19 patient saliva**

Validation of secretory component assay was confirmed by outcompeting signal with recombinant secretory component. We observed that incubation of COVID-19 positive samples with recombinant secretory component prior to incubation in the experimental plate brought signal down to negative control levels in a concentration-dependent manner. Pre-pandemic colostrum showed no evidence of anti-Spike/RBD associated secretory component signal, as expected.



**Supplementary Fig. 4. Correlation of anti-spike and anti-RBD IgA and secretory component in the saliva at 2 weeks and 6 months post-dose 2.**

Participants from the LTCH cohort were sampled 2-4 weeks (A,B) and 6 months (C,D) after their second dose of COVID-19 mRNA vaccination. IgA and secretory component were analyzed in saliva via an ELISA-based method. A Spearman test was used to calculate the correlation coefficient for each plot, examining subjects who were positive for anti-Spike IgA at 2 weeks post-dose 2. ns= not significant,  $*=p<0.05$  and  $****=p<0.0001$ .



**Supplementary Fig 5. Neutralizing antibodies detected in the saliva of participants receiving COVID-19 mRNA vaccines.**

Saliva taken from a subset (n=15) of mRNA-vaccinated subjects representing a range of IgA titers 2-4 weeks post-dose 2 was assessed for the presence of neutralizing antibodies and results were expressed as a percentage of maximum infection (A), where a lower percentage indicates decreased infection of hACE-2 HEK293 cells by rVSV-eGFP-SARS-CoV-2-Spike. Fluorescent reduction neutralization titre (FRNT) using a cut off of either 50% (B) or 70% (C) from n=15 participants at 2-4 weeks and 6 months post-dose 2 was also analyzed. The Wilcoxon signed-rank test was used to calculate significance between groups, where  $*=p<0.05$ ,  $***=p<0.001$ , and  $****=p<0.0001$ .

**Supplementary Table 1.**

LTCH cohort (mRNA/mRNA)

<b>Participant ID</b>	<b>Age</b>	<b>Sex</b>	<b>Vaccine type</b>	<b>Interval between dose 1 and dose 2 (weeks)</b>
1	46-50	F	mRNA1273	4
2	61-65	F	mRNA1273	4.7
3	46-50	F	BNT162b2	5.9
4	41-45	F	mRNA1273	4
5	56-60	F	BNT162b2	3
6	41-45	F	mRNA1273	4
7	56-60	F	mRNA1273	4
8	41-45	F	BNT162b2	5
9	56-60	F	mRNA1273	4
10	46-50	F	mRNA1273	4
11	36-40	F	BNT162b2	5
12	51-55	M	BNT162b2	2.9
13	56-60	F	mRNA1273	2.9
14	46-50	F	BNT162b2	5.6
15	31-35	F	BNT162b2	5.3
16	51-55	F	BNT162b2	5.6
17	61-65	F	BNT162b2	47.7
18	51-55	F	BNT162b2	4.4
19	51-55	F	mRNA1273	4
20	61-65	F	BNT162b2	5
21	56-60	F	BNT162b2	5
22	26-30	F	BNT162b2	5.6
23	56-60	F	BNT162b2	5.6
24	46-50	F	BNT162b2	5.6
25	41-45	F	BNT162b2	5.6
26	36-40	F	BNT162b2	5.6
27	61-65	F	BNT162b2	5.6
28	51-55	F	BNT162b2	5.6
29	41-45	F	BNT162b2	5.6
30	51-55	M	BNT162b2	7
31	61-65	F	BNT162b2	5.6
32	46-50	F	BNT162b2	5
33	26-30	F	BNT162b2	5.6
34	31-35	M	BNT162b2	5.6
35	36-40	F	mRNA1273	4
36	31-35	F	BNT162b2	5
37	41-45	F	BNT162b2	5.6

38	26-30	F	BNT162b2	5.6
39	41-45	F	BNT162b2	5
40	61-65	F	BNT162b2	6.4
41	36-40	M	BNT162b2	5.6
42	31-35	F	mRNA1273	4
43	36-40	M	mRNA1273	4
44	51-55	F	mRNA1273	3
45	46-50	M	mRNA1273	4
46	26-3-	F	mRNA1273	4
47	56-60	F	mRNA1273	4
48	31-35	F	mRNA1273	5
49	56-60	M	mRNA1273	4.9
50	51-55	F	mRNA1273	5
51	41-45	F	mRNA1273	4.1
52	51-55	F	mRNA1273	2.9
53	36-40	F	BNT162b2	4.6
54	41-45	F	BNT162b2	4.1
55	61-65	F	BNT162b2	3.4
56	61-65	F	BNT162b2	4.6
57	20-25		BNT162b2	3.7
58	20-25	F	BNT162b2	4.9
59	31-35	F	BNT162b2	3
60	26-30	F	BNT162b2	4.4
61	31-35	F	BNT162b2	3.7
62	46-50	F	BNT162b2	4.9
63	36-40	M	BNT162b2	3
64	61-65	M	BNT162b2	4.6
65	46-50	F	BNT162b2	3.1
66	61-65	F	BNT162b2	5
67	26-30	F	BNT162b2	4.7
68	51-55	F	BNT162b2	4.4
69	46-50	F	BNT162b2	3
70	41-45	F	BNT162b2	3.9
71	51-55	F	BNT162b2	3.9
72	31-35	F	BNT162b2	8.4
73	46-50	F	BNT162b2	6.9
74	51-55	F	BNT162b2	3
75	20-25	F	BNT162b2	3.1
76	20-25		BNT162b2	3.7
77	51-55	F	BNT162b2	3
78	56-60	F	BNT162b2	4.7
79	20-25	F	BNT162b2	3.1
80	55-60	F	BNT162b2	5.1

81	36-40	M	BNT162b2	5
82	26-30	F	BNT162b2	5
83	56-60	F	BNT162b2	4
84	20-25	F	mRNA1273	4
85	20-25	F	BNT162b2	5
86	46-50	M	mRNA1273	3.4
87	41-45	F	BNT162b2	5
88	66-70	F	BNT162b2	5
89	36-40	M	mRNA1273	3
90	31-35	F	BNT162b2	3
91	31-35	F	mRNA1273	3.4
92	20-25	F	BNT162b2	3
93	26-30	F	mRNA1273	3
94	20-25	F	BNT162b2	3
95	41-45	F	BNT162b2	3
96	61-65	F	mRNA1273	3
97	56-60	F	mRNA1273	4
98	41-45	F	BNT162b2	49.1
99	26-30	F	BNT162b2	49.1
100	56-60	F	mRNA1273	3
101	26-30	F	mRNA1273	4
102	36-40	F	BNT162b2	3
103	61-65	F	mRNA1273	3.6
104	36-40	F	BNT162b2	5
105	26-30	F	mRNA1273	3.4
106	20-25	F	mRNA1273	4
107	71-75	F	mRNA1273	
<b>Summary</b>	<b>Median=46</b>	<b>%M=11</b> <b>%F=89</b>	<b>%mRNA1273=32</b> <b>%BNT162b2=68</b>	<b>Median=4.4</b>



**Supplementary Table 2a.**

COVID-19 era negative controls

<b>Participant ID</b>	<b>Age</b>	<b>Sex</b>	<b>Collection period</b>	<b>Used in Fig 1, Fig. 3 or as pooled negative</b>
108	26-30	M	COVID era	Fig. 3
109	20-25	F	COVID era	Fig. 3
110	61-65	M	COVID era	Fig. 3
111	36-40	M	COVID era	Fig. 3
112	56-6-	F	COVID era	Fig. 3
113	41-45	M	COVID era	Fig. 3
114	46-50	F	COVID era	Fig. 3
115	26-30	M	COVID era	Fig. 3
116	31-35	F	COVID era	Fig. 3
117	31-35	M	COVID era	Fig. 3
118	36-40	F	COVID era	Fig. 3
119	36-40	M	COVID era	Fig. 3
120	31-35	M	COVID era	Fig. 3
121	36-40	M	COVID era	Fig. 3
122	66-70	F	COVID era	Fig. 3
123	66-70	M	COVID era	Fig. 3
124	91-95	F	COVID era	Fig. 3
125	36-40	M	COVID era	Fig. 3
126	71-75	F	COVID era	Fig. 3
127	66-70	M	COVID era	Fig. 3
128	36-40	F	COVID era	Fig. 3
129	41-45	M	COVID era	Fig. 3
130	41-45	M	COVID era	Fig. 3
131	51-55	M	COVID era	Fig. 3
132	61-65	M	COVID era	Fig. 3
133	56-60	F	COVID era	Fig. 3
134	61-65	M	COVID era	Fig. 3
135	71-75	M	COVID era	Fig. 3
136	81-85	F	COVID era	Fig. 3
137	51-55	M	COVID era	Fig. 3
138	71-75	M	COVID era	Fig. 3
139	61-65	F	COVID era	Fig. 3
140	61-65	M	COVID era	Fig. 3
141	81-85	F	COVID era	Fig. 3
142	46-50	M	COVID era	Fig. 3
143	66-70	F	COVID era	Fig. 3
144	20-25	F	COVID era	Fig. 3
145	66-70	F	COVID era	Fig. 3

146	26-30	M	COVID era	Fig. 3
147	61-65	F	COVID era	Fig. 3
148	61-65	M	COVID era	Fig. 3
149	41-45	M	COVID era	Fig. 3
150	61-65	M	COVID era	Fig. 3
151	86-90	M	COVID era	Fig. 3
152	81-85	F	COVID era	Fig. 3
153	81-85	M	COVID era	Fig. 3
154	76-80	M	COVID era	Fig. 3
155	56-60	M	COVID era	Fig. 3
156	56-60	M	COVID era	Fig. 3
<b>Summary</b>	<b>Median age=58</b>	<b>%M=63 %F=37</b>		

**Supplementary Table 2b.**

Pre-COVID era negative controls

<b>Sample ID</b>	<b>Age</b>	<b>Sex</b>	<b>Used in Fig. 1, Fig. 3 or as pooled negative</b>
157	31-35	F	Pooled negative
158	41-45	F	Pooled negative
159	41-45	M	Pooled negative
160	31-35	F	Pooled negative
161	66-70	M	Pooled negative
162	20-25	F	Pooled negative
163	31-35	F	Pooled negative
164	26-30	F	Pooled negative
165	41-45	F	Pooled negative
166	31-35	M	Pooled negative
167	26-30	M	Pooled negative
168	41-45	F	Pooled negative
169	46-50	F	Pooled negative
170	36-40	F	Pooled negative
171	56-60	M	Pooled negative
172	36-40	M	Pooled negative
173	51-55	F	Pooled negative
174	15-19	M	Pooled negative
175	20-25	M	Pooled negative
176	46-50	M	Pooled negative
177	36-40	F	Pooled negative
178	36-40	F	Pooled negative
179	46-50	F	Pooled negative
180	41-45	F	Pooled negative
181	46-50	M	Pooled negative
182	51-55	F	Pooled negative
183	31-35	M	Pooled negative
184	31-35	F	Pooled negative
185	56-60	F	Pooled negative
186	51-55	F	Pooled negative
187	26-30	F	Pooled negative
188	36-40	M	Pooled negative
189	41-45	M	Pooled negative
190	31-35	F	Pooled negative
191	26-30	F	Pooled negative
192	36-40	F	Pooled negative
193	56-60	M	Pooled negative
194	41-45	M	Pooled negative
195	41-45	F	Pooled negative
196	36-40	F	Pooled negative
197	31-35	M	Pooled negative

198	36-40	M	Pooled negative
199	46-50	F	Pooled negative
200	41-45	F	Pooled negative
201	15-19	F	Pooled negative
202	26-30	F	Pooled negative
203	21-25	M	Pooled negative
204	36-40	F	Pooled negative
205	36-40	M	Pooled negative
206	31-35	F	Pooled negative
207	26-30	F	Pooled negative
208	31-35	M	Fig. 3 + pooled negative
209	32-35	M	Fig. 3 + pooled negative
210	41-45	M	Fig. 3 + pooled negative
211	51-55	F	Fig. 3 + pooled negative
212	56-60	M	Fig. 3 + pooled negative
213	56-60	F	Fig. 3 + pooled negative
214	46-50	F	Fig. 3 + pooled negative
215	41-45	M	Fig. 3 + pooled negative
216	41-45	M	Fig. 3 + pooled negative
217	36-40	F	Fig. 3 + pooled negative
218	46-50	M	Fig. 3 + pooled negative
219	41-45	F	Fig. 3 + pooled negative
220	51-55	M	Fig. 3 + pooled negative
221	41-45	F	Fig. 3 + pooled negative
222	26-30	M	Fig. 3 + pooled negative
223	41-45	F	Fig. 3 + pooled negative
224	26-30	M	Fig. 3 + pooled negative
225	31-35	M	Fig. 3 + pooled negative
226	36-40	M	Fig. 3 + pooled negative
227	41-45	F	Fig. 3 + pooled negative
228	36-40	F	Fig. 3 + pooled negative
229	15-19	M	Fig. 3 + pooled negative
230	20-25	F	Fig. 3 + pooled negative
231	46-50	F	Fig. 3 + pooled negative
232	56-60	F	Fig. 3 + pooled negative
233	61-65	M	Fig. 3 + pooled negative
234	36-40	F	Fig. 3 + pooled negative
<b>Summary</b>	<b>Median age=39</b>	<b>%M=42 %F=58</b>	

**Supplementary Table 2c.**

COVID-19 patient data

<b>Participant ID</b>	<b>Age</b>	<b>Sex</b>	<b>Days PSO</b>	<b>Status</b>	<b>Used in Fig.1 or Fig. 3</b>
235	71-75	M	46	Convalescent	Fig. 3
236	31-35	M	78	Convalescent	Fig. 3
237	56-60	M	47	Convalescent	Fig. 3
238	71-75	F	42	Convalescent	Fig. 3
239	26-30	M	50	Convalescent	Fig. 3
240	51-55	M	48	Convalescent	Fig. 3
241	46-50	M	60	Convalescent	Fig. 3
242	41-45	M	44	Convalescent	Fig. 3
243	56-60	F	45	Convalescent	Fig. 3
244	56-60	F	39	Convalescent	Fig. 3
245	51-55	M	65	Convalescent	Fig. 3
246	41-45	F	53	Convalescent	Fig. 3
247	61-65	F	51	Convalescent	Fig. 3
248	56-60	F	47	Convalescent	Fig. 3
249	26-30	M	42	Convalescent	Fig. 3
250	41-45	M	49	Convalescent	Fig. 3
251	56-60	M	39	Convalescent	Fig. 3
252	56-60	F	59	Convalescent	Fig. 3
253	76-80	M	64	Convalescent	Fig. 3
254	51-55	M	58	Convalescent	Fig. 3
255	71-75	M	57	Convalescent	Fig. 3
256	56-60	F	58	Convalescent	Fig. 3
257	61-65	M	40	Convalescent	Fig. 3
258	51-55	M	64	Convalescent	Fig. 3
259	26-30	F	91	Convalescent	Fig. 3
260	51-55	M	49	Convalescent	Fig. 3
261	66-70	F	65	Convalescent	Fig. 3
262	51-55	F	52	Convalescent	Fig. 3
263	51-55	M	82	Convalescent	Both
264	51-55	M	75	Convalescent	Fig. 3
265	26-30	F	56	Convalescent	Fig. 3
266	61-65	M	31	Convalescent	Fig. 3
267	76-80	F	47	Convalescent	Fig. 3
268	66-70	F	40	Convalescent	Fig. 3
269	46-50	M	50	Convalescent	Fig. 3
270	81-85	F	67	Convalescent	Fig. 3
271	61-65	M	62	Convalescent	Fig. 3
272	71-75	M	80	Convalescent	Fig. 3
273	56-60	M	104	Convalescent	Fig. 3
274	71-75	M	40	Convalescent	Fig. 3

275	81-85	M	17	Acute	Fig. 3
276	41-45	M	44	Convalescent	Fig. 3
277	81-85	M	13	Acute	Fig. 3
278	36-40	F	51	Convalescent	Fig. 3
279	61-70	F	53	Convalescent	Fig. 3
280	36-40	M	45	Convalescent	Both
281	51-55	M	52	Convalescent	Both
282	46-50	M	9	Acute	Both
283	61-65	M	10	Acute	Both
284	56-60	M	69	Convalescent	Both
285	41-45	M	24	Convalescent	Both
286	81-85	F	11	Acute	Both
287	81-85	F	14	Acute	Both
288	81-85	M	5	Acute	Both
289	86-49	M	12	Acute	Fig. 3
290	91-95	F	10	Acute	Fig. 3
291	76-80	M	7	Acute	Fig. 3
292	76-80	M	10	Acute	Fig. 3
293	46-50	M	13	Acute	Fig. 3
294	56-60	M	8	Acute	Fig. 3
295	56-60	M	11	Acute	Fig. 3
296	56-60	F	11	Acute	Fig. 3
297	96-100	F	3	Acute	Fig. 3
298	96-100	F	6	Acute	Fig. 3
299	61-65	M	15	Acute	Fig. 3
300	36-40	M	19	Acute	Fig. 3
301	61-65	F	3	Acute	Fig. 3
302	81-85	F	12	Acute	Fig. 3
303	61-65	F	9	Acute	Fig. 3
304	66-70	M	36	Convalescent	Fig. 3
305	31-35	F	40	Convalescent	Fig. 3
306	31-25	F	75	Convalescent	Both
307	41-35	M	86	Convalescent	Both
308	71-75	F	96	Convalescent	Both
309				Acute	Fig 1
400				Acute	Fig 1
401				Acute	Fig 1
402				Acute	Fig 1
<b>Summary</b>	<b>Median =59</b>	<b>%M=61 %F=39</b>	<b>Mean. = 42d</b>	<b>%Acute=32 %Convalescent=68</b>	

**Supplementary Table 3a.**

Bivariate and multivariable analysis examining potential independent associations between log-transformed saliva anti-Spike IgA.

	<b>Bivariate analysis</b>	<b>Multivariable analysis</b>
<b>Predictor</b>	Beta coefficient (95% CI)	Beta coefficient (95% CI)
Age in years	0.02 (0.01 to 0.04)	0.02 (0.002 to 0.04)
Male sex	-0.4 (-1.1 to 0.3)	-0.4 (-1.1 to 0.3)
Time from vaccination to sample collection in days	0.01 (-0.03 to 0.05)	0.01 (-0.03 to 0.05)
Prior SARS-CoV-2 infection	1.0 (0.4 to 1.5)	0.9 (0.3 to 1.4)

Abbreviations: CI = confidence interval

**Supplementary Table 3b.**

Bivariate and multivariable analysis examining potential independent associations between saliva anti-Spike IgG.

	<b>Bivariate analysis</b>	<b>Multivariable analysis</b>
<b>Predictor</b>	Beta coefficient (95% CI)	Beta coefficient (95% CI)
Age in years	0.6 (-0.1 to 1.2)	0.4 (-0.2 to 1.1)
Male sex	-38.7 (-65.2 to -12.2)	-39.5 (-65.7 to -13.3)
Time from vaccination to sample collection	-0.9 (-4.7 to 2.8)	-0.4 (-1.9 to 1.1)
Prior SARS-CoV-2 infection	21.3 (-0.3 to 42)	19.7 (-1.5 to 41)

Abbreviations: CI = confidence interval



**Supplementary Table 3c.**

Bivariate and multivariable analysis examining potential independent associations between log-transformed serum anti-RBD IgA.

	<b>Bivariate analysis</b>	<b>Multivariable analysis</b>
<b>Predictor</b>	Beta coefficient (95% CI)	Beta coefficient (95% CI)
Age in years	0.005 (-0.006 to 0.02)	0.0008 (-0.01 to 0.01)
Male sex	0.2 (-0.2 to 0.7)	0.2 (-0.3 to 0.6)
Time from vaccination to sample collection	-0.04 (-0.06 to -0.01)	-0.04 (-0.06 to -0.01)
Prior SARS-CoV-2 infection	0.5 (0.1 to 0.9)	0.5 (0.2 to 0.9)

Abbreviations: CI = confidence interval

**Supplementary Table 4.**

MSB-1 (longitudinal mRNA 2 doses cohort)

<b>Participant ID</b>	<b>Age</b>	<b>Sex</b>	<b>Vaccination Type</b>
403	20-25	F	BNT162b2
404	26-30	F	BNT162b2
405	26-30	M	BNT162b2
406	20-25	F	BNT162b2
407	20-25	M	BNT162b2
408	20-25	M	BNT162b2
409	20-25	M	BNT162b2
410	41-45	F	BNT162b2
411	20-25	M	BNT162b2
412	20-25	F	BNT162b2
413	31-35	F	BNT162b2
414	36-40	F	BNT162b2
415	56-50	M	BNT162b2
416	56-60	M	BNT162b2
417	20-25	F	BNT162b2
418	36-40	M	BNT162b2
419	20-25	F	BNT162b2
420	20-25	F	BNT162b2
421	31-35	M	BNT162b2
422	26-30	M	BNT162b2
423	26-30	F	BNT162b2
424	26-30	F	BNT162b2
425	26-30	F	BNT162b2
426	20-25	F	BNT162b2
427	26-30	M	BNT162b2
428	46-50	M	BNT162b2
429	41-45	F	BNT162b2
430	41-45	F	BNT162b2
431	26-30	F	BNT162b2
432	26-30	M	BNT162b2
<b>Summary</b>	<b>Median age=27</b>	<b>%M=42 %F=56</b>	

**Supplementary Table 5.**

Long Term Care (LTC) residents outbreak cohort

Participant ID	Age	Sex	Vaccination type	PCR-confirmed status at time of outbreak
433	91-95	Male	mRNA-1273	Infected
434	91-95	Female	mRNA-1273	Not infected
435	91-95	Male	mRNA-1273	Not infected
436	96-100	Female	mRNA-1273	Infected
437	91-95	Female	mRNA-1273	Not infected
438	96-100	Female	mRNA-1273	Not infected
439	81-85	Female	mRNA-1273	Not infected
440	86-90	Female	mRNA-1273	Not infected
441	91-95	Female	mRNA-1273	Not infected
442	91-95	Female	mRNA-1273	Not infected
443	91-95	Male	mRNA-1273	Not infected
444	76-80	Male	mRNA-1273	Not infected
445	91-95	Male	mRNA-1273	Infected
446	91-95	Female	mRNA-1273	Infected
447	86-90	Male	mRNA-1273	Infected
448	96-100	Female	mRNA-1273	Not infected

**Supplementary Table 6.**

Sheba Medical Centre Cohort (breakthrough infection post-vaccination)

<b>Participant ID</b>	<b>Participant Age</b>	<b>Participant Sex</b>	<b>PCR-confirmed status</b>
449	46-50	F	uninfected
450	46-50	F	uninfected
451	36-40	M	infected
452	46-50	F	uninfected
453	36-40	F	uninfected
454	41-45	M	uninfected
455	51-55	F	uninfected
456	46-50	F	uninfected
457	46-50	M	uninfected
458	41-45	M	uninfected
459	51-55	M	uninfected
460	46-50	F	uninfected
461	51-55	M	infected
462	51-55	M	uninfected
463	46-50	F	uninfected
464	46-50	F	uninfected
465	41-45	M	uninfected
466	41-45	F	uninfected
467	46-50	M	uninfected
468	56-60	F	uninfected
469	51-55	F	uninfected
470	46-50	F	uninfected
471	41-45	F	uninfected
472	46-50	M	uninfected
473	46-50	F	uninfected
474	41-45	M	uninfected
475	61-65	F	uninfected
476	61-65	M	uninfected
477	41-45	F	infected
478	31-35	M	infected
479	61-65	F	uninfected
480	51-55	F	uninfected
481	36-40	M	uninfected
482	41-45	M	infected
483	26-30	M	uninfected
484	46-50	M	uninfected

485	41-45	M	uninfected
486	41-45	M	uninfected
487	46-50	F	uninfected
488	31-35	M	uninfected
489	51-55	F	uninfected
490	46-50	F	uninfected
491	51-55	M	uninfected
492	36-40	M	uninfected
493	46-50	M	uninfected
494	36-40	M	uninfected
495	46-50	M	uninfected
496	46-50	M	uninfected
497	51-55	F	infected
498	46-50	M	infected
499	41-45	F	uninfected
500	46-50	F	infected
501	46-50	F	uninfected
502	46-50	F	uninfected
503	51-55	F	uninfected
504	46-50	F	infected
505	41-45	M	uninfected
506	41-45	F	uninfected
507	46-50	F	uninfected
508	46-50	F	uninfected
509	46-50	F	uninfected
510	61-65	F	uninfected
511	36-40	M	infected
512	41-45	M	uninfected
513	46-50	F	uninfected
514	46-50	F	infected
515	36-40	M	uninfected
<b>Summary</b>	<b>Median Age= 47</b>	<b>%F=54%</b>	
		<b>%M=46%</b>	