

1

2

Understanding the impact of the COVID-19 pandemic on a socially deprived UK coastal town: a preliminary exploratory analysis of health and socioeconomic data

3

4

5

6

Maddy French^{1,*}, Mark Spencer³, Mike Walker⁴, Afzal

7

Patel⁴, Neil Clarke⁴, Ross Hughes⁵, Collette Taylor⁵,

8

Margaret Orwin⁵, Alicia Elliott⁵, Karl Worsley⁶, Julie Casson⁶,

9

Stephen Milan⁷, Mark Bowen⁸, Luigi Sedda^{2,*}

10

11 ¹Division of Health Research, Lancaster University

12 ²Lancaster Medical School, Lancaster University

13 ³Healthier Fleetwood

14 ⁴Lancashire County Council

15 ⁵NHS Midlands and Lancashire Commissioning Support Unit

16 ⁶Department of Work and Pensions

17 ⁷Health Engagement and Innovation Team, Lancaster University

18 ⁸Research and Enterprise Services, Lancaster University

19 * corresponding authors: m.french4@lancaster.ac.uk; l.sedda@lancaster.ac.uk

20

21 **Competing Interest Statement**

22 The authors have declared no competing interest.

23 **Funding Statement**

24 This work was funded by the NHS, Wyre Council, Healthier Fleetwood and Lancaster University EPSRC Impact
25 Accelerator Account. We thank all the members of Healthier Fleetwood, Future Fleetwood and the Fleetwood
26 public for their support.

27 **Author Declarations**

28 I confirm all relevant ethical guidelines have been followed, and any necessary IRB and/or ethics committee
29 approvals have been obtained.

30 Yes

31 **The details of the IRB/oversight body that provided approval or exemption for the research described are**
32 **given below:**

33 All authors have participated in the conception and design of the study. MF and LS analysed the data. All
34 authors contributed to the interpretation of the data. MF drafted the first version of the manuscript. All the
35 authors revised the drafts and approved its final version.

36 Ethical approval for collection and analyses of secondary data was obtained from the Ethics Committee at the
37 Faculty of Health and Medicine at Lancaster University (FHMREC20121).

38

39 **Abstract**

40 **Introduction**

41 In addition to the direct impact of COVID-19 infections on health and mortality, a growing
42 body of literature indicates there are wide-ranging indirect impacts of the COVID-19
43 pandemic and associated public health measures on population health and wellbeing.
44 Exploring these indirect impacts in the context of a socially deprived UK coastal town will
45 help identify priority areas to focus COVID-19 recovery efforts on.

46 **Methods**

47 Data on primary care diagnosis, hospital admissions, and several socioeconomic outcomes
48 between 2016 and Spring 2021 in the UK town of Fleetwood were collected and analysed in
49 an exploratory analysis looking at pre- and post- COVID-19 patterns in health and social
50 outcomes. Weekly and monthly trends were plotted by time and differences between
51 periods examined using Chi-squared and t-tests.

52 **Results**

53 Initial falls in hospital admissions and diagnoses of conditions in primary care in March 2020
54 were followed by sustained changes to health service activity for specific diagnostic and
55 demographic groups, including for chronic kidney disease and young people. Increases in the
56 number of people receiving Universal Credit and children eligible for free school meals
57 appear to be greater for those in the least deprived areas of the town.

58 **Discussion**

59 These exploratory findings provide initial evidence of the sustained impact of the pandemic
60 across several health and social outcomes. Examining these trends in multivariate analyses
61 will further test these associations and establish the strength of the medium term impact of
62 the pandemic on the population of this coastal town. Advanced modelling of this data is
63 ongoing and will be published shortly.

64

65 Introduction

66 The arrival of COVID-19 has exposed and likely exacerbated decades of worsening
67 health inequalities in many UK towns (1–3). For communities already tackling persistent
68 and entrenched health and socioeconomic inequities, the pandemic has created additional
69 challenges but may also offer opportunities for reform and change. As well as COVID-19
70 infections having a direct impact on health and mortality, a growing body of literature
71 suggests there are wide-ranging indirect impacts of the pandemic and associated public
72 health measures on health and wellbeing (4–6).

73 The arrival of COVID-19 necessitated a substantial shift in focus within healthcare
74 towards the care of people with acute COVID-19, and the protection of other patients and
75 staff from infection. As would be expected, this had an indirect yet substantial impact on
76 the patterns of healthcare use for other patients. Some of the reported short-term effects
77 of the pandemic include an immediate drop in use of hospital and primary care services as
78 people avoided non-urgent healthcare, and some healthcare services were paused, during
79 the early months of the pandemic (4,5,7). The pause in access may also have indirect longer-
80 term impacts on people with chronic health conditions. A small survey of Chronic
81 Obstructive Pulmonary Disease (COPD) patients, for example, found that many experienced
82 worsening of their COPD control during the 'lockdown' period (8). Other chronic conditions
83 such as diabetes may have worsened for some people through the negative impact of
84 reduced physical inactivity and increased food intake (9).

85 Several studies suggest the COVID-19 pandemic also had an immediate impact on
86 healthcare provided to people with mental health needs in the UK. Primary care contacts
87 for people with acute mental health conditions in the UK dropped considerably during this
88 time, and for most conditions had not recovered to normal levels by July 2020 (4). The
89 incidence of depression, anxiety disorders and first antidepressant prescribing was lower in
90 April 2020 compared to previous years; by September these had returned to approximately
91 normal levels in England but remained low in the rest of the UK (12).

92 Alongside these patterns in appearances at health services, the mental health needs of some
93 population groups may have increased. The combination of the social determinants of

94 mental health with pandemic-related stressors is likely to exacerbate or create mental health
95 burdens for marginalised, discriminated, or socially disadvantaged populations (13). There is
96 consistent evidence suggesting the pandemic had a detrimental effect on mental health,
97 particularly among women, young people, and those who were already financially insecure
98 prior to the crisis (6,14,15).

99 At the same time COVID-19 impacted health and healthcare, it had an impact on the
100 socioeconomic conditions of the communities affected by the pandemic. With a high share of
101 employment sitting within the accommodation, leisure and tourism sectors, the UK is a
102 country vulnerable to the negative economic impacts of the pandemic (16). While it is too
103 early to estimate the long term impacts of the pandemic on household incomes, evidence
104 from the 2008 global financial crash suggests that poverty began to increase several years
105 after the crisis in reaction to austerity, highlighting the importance of policy responses to
106 crises (17). Following the arrival of COVID-19 in the UK, attempts were made to cushion the
107 economic impacts of the public health measures through the Job Retention Scheme and
108 an uplift to the Universal Credit payments for those in unemployment (18). Nonetheless,
109 some population groups experienced, and likely continue to experience, greater impacts on
110 their finances. Low income families with young children reported increases in household
111 expenditure in 2020, and long-term forecasts suggest more parents, and thus children, will
112 be pushed into precarious financial circumstances (19).

113 A potential consequence of these economic impacts includes increased food insecurity and
114 poor health. A survey tracking food standards in the UK during Covid-19 suggests that in
115 March 2021 the level of food insecurity remained high, with 17% of respondents skipping
116 meals or cutting the size of meals because they did not have enough money to buy food
117 (20). Well established links between unemployment and poor health have also led to
118 predictions of increased physical and mental health burdens potentially arising from
119 pandemic-related unemployment (21,22).

120 The aim of this analysis is to explore the indirect impacts the COVID-19 pandemic has had on
121 health and socioeconomic outcomes in a socially deprived coastal town in North West
122 England. In this study we provide a preliminary assessment of the post-COVID-19 emerging
123 trends for health and socioeconomic conditions in Fleetwood. This preliminary assessment will

124 be followed by a robust analysis of the spatial and temporal changes in outcomes between
125 pre- and post- COVID-19 pandemic period, including the effect of different levels of
126 deprivation in Fleetwood on these changes. Better understanding of the extent of the impact
127 of the pandemic will help Fleetwood and similar coastal communities to prioritise recovery
128 efforts for those most in need of support.

129 **Methods**

130 **Study setting**

131 Fleetwood is a coastal town in Lancashire home to approximately 30,000 people, many of
132 whom were already experiencing poor health and living in disadvantaged socioeconomic
133 circumstances prior to the pandemic (23). Forty-three percent of neighbourhoods in
134 Fleetwood are amongst some of the 10% most deprived areas in the country and, like other
135 deprived areas, experience some of the associated poor physical and mental health
136 outcomes (24).

137 As a coastal community without a large employer or industry, Fleetwood is a place that is
138 geographically and economically 'on the periphery', vulnerable to feeling the worst effects of
139 phenomena such as financial crises and pandemics (25,26). It also has a population older than
140 the English average, with 22% of its population aged over 65-years-old, compared to 18%
141 nationally (27). A report released early on in the pandemic suggested that people in coastal
142 areas were particularly vulnerable to the health and welfare effects of COVID-19 (28).
143 However, coastal towns also offer opportunities to improve health and wellbeing, with good
144 air quality and access to outdoors providing some protective effects against poor health (29).

145 **Data collection**

146 Data were originally collected as part of routine clinical care or routine service delivery and
147 surveillance in Fleetwood (Table 1). Information about diagnosis in primary care and hospital
148 admissions for patients registered at a Fleetwood GP practice was extracted and provided to
149 the research team by the Midlands and Lancashire Commissioning Support Unit. These
150 datasets included information on patient age band, sex, the Lower Layer Super Output Area
151 (LSOA) for the area where the patient lived, and date of activity. Data from primary care were
152 provided for the period April 2016 to June 2021. The dataset for hospital admissions also
153 included the admission outcome, diagnosis, and secondary diagnoses upon admission. Data on

154 hospital admissions were provided for the period April 2016 to April 2021.

155 Data on the number of young people on apprenticeships or classed as Not in Education,
156 Employment, or Training (NEET), and the number of pupils eligible to receive free school
157 meals, were provided by Lancashire County Council, aggregated by month and area.
158 Information about street crime (number of crimes by month and LSOA) were extracted by the
159 research team from open access datasets published by the police(www.data.police.uk) for the
160 period June 2018 - June 2021 (historic data are only available up to two years). The number of
161 unemployment claimants in Fleetwood aggregated by month, LSOA, age band, and sex were
162 extracted from the open access dataset published by the Department for Work and Pensions
163 (www.stat-xplore.dwp.gov.uk). Data on LSOA and Fleetwood population size by sex and age
164 group were downloaded from open access datasets published by the Office for National
165 Statistics (www.nomisweb.co.uk).

166 Information about area income deprivation was collected from the English indices of
167 deprivation 2019 (24). The indices of deprivation include the Index of Multiple Deprivation, a
168 composite measure of area deprivation, made up of individual domains of deprivation across
169 income, employment, education, health, crime, environment, and access to services. In this
170 study, data on employment, education, health, and crime in the local area was already
171 collected, meaning it was appropriate to use only the income deprivation domain from the
172 indices of deprivation. Using one domain also offers greater conceptual clarity than the
173 composite Index of Multiple Deprivation, which includes data on multiple mechanisms
174 between socioeconomic characteristics and health outcomes.

175 The distribution of area income deprivation in Fleetwood is shown in Table 1. In this study,
176 small areas aggregate into two categories: the most income deprived areas (deciles 1 and 2)
177 and the least income deprived areas (deciles 3,5-7). There are no areas in income decile 4 in
178 Fleetwood. Income deprivation is subsequently used as a dichotomous variable.

179

180

Table 1: Percentage of Fleetwood population by income deprivation area

Income Decile	Number of LSOA areas	Income deprived	Percentage (%)
1	43	Most	52
2	9		
3	4	Least	49
5	19		
6	14		
7	11		

181

182

Table 2: Variable descriptions

Variable group	Time period	Variable	Categories/Values
<i>Secondary care</i>			
Hospital admissions	April 2016- April 2021	Weekly rate of admissions of:	0-14 year olds
			15-24 year olds
			25-44 year olds
			45-64 year olds
			65-84 year olds
			85+ year olds
			Males
			Female
			Patients from the most income deprived areas
			Patients from the least income deprived areas
Patients whose primary diagnosis group upon admission is cancer related			
Patients whose primary diagnosis group upon admission is respiratory related			
Patients whose primary diagnosis group upon admission is cardiovascular related			
Patients whose primary diagnosis group upon admission is mental health related			
Patients whose primary diagnosis group upon admission is renal related			
Patients whose primary diagnosis group upon admission is diabetes related			

			<p>Patients whose primary diagnosis group upon admission is obesity related</p> <p>Patients <i>split by diagnosis (all possible diagnoses not listed here)</i></p> <p>Patients whose admission was unplanned</p> <p>Patients whose admission was planned</p> <p>Patients who died in hospital</p> <p>Patients who were discharged from hospital</p>
<i>Primary care</i>			
Separate primary care datasets listed below	April 2016- June 2021	All primary care indicators available broken down by:	0-24 year olds
			25-64 year olds
			65+ year olds
			Males
			Females
			Patients in the most income deprived areas
			Patients in the least income deprived areas
Primary care consultations	April 2016- June 2021	Weekly rate of consultations of:	<p>Emergency consultations</p> <p>Face to face consultations</p> <p>Home consultations</p> <p>Telephone consultations</p> <p>Consultations where the consultation type is missing</p>
Condition reviews in primary care	April 2016- June 2021	Weekly rate of reviews for	<p>Asthma Control</p> <p>Cancer</p> <p>COPD</p> <p>MRC Breathlessness Scale</p>

			Depression Obesity Frailty
		Weekly rate of attendance for	Diabetes Education Weight Management Programme
New diagnoses in primary care	April 2016- June 2021	Weekly rate of new diagnoses for	Atrial Fibrillation Asthma Cancer Chronic heart disease Chronic kidney disease Chronic obstructive pulmonary disease (COPD) Dementia Depression Diabetes Heart Failure Hypertension Mental Health Peripheral arterial disease (PAD) Stroke TIA Influenza COVID (positive test)
Cancer registration data	April 2016- June 2021	Weekly rate of new cancer registrations for	Any cancer diagnosis Site-specific cancers (<i>all possible cancer diagnoses not listed here</i>)
		Weekly rate of fast track referrals for	
<i>Crime</i>			
Street crime	June	Monthly rate of	In the most income deprived areas

	2018 - June 2021	recorded instances of all crime	In the least income deprived areas
		Monthly rate of recorded instances of violence and sexual offences	In the most income deprived areas In the least income deprived areas
		Monthly rate of recorded instances of anti-social behaviour disorder	In the most income deprived areas In the least income deprived areas
<i>Employment</i>			
Universal Credit claimants	Jan 2016- May 2021	Monthly rate of people claiming Universal Credit under the 'Searching for Work' condition (Alternative claimant count)	For ages 16-24
			For ages 25-49
			For ages 50+
			For males
			For females
			In the most income deprived areas
			In the least income deprived areas
<i>Education and attainment</i>			
Not in Education, Employment, or Training (NEET)	Jan 2016 – Dec 2020	Monthly rate of 16-24 year olds Not in Education, Employment, or Training (NEET)	-
Apprenticeships	Jan 2016 – Dec	Monthly rate of 16-24 year olds	-

	2020	on	
		Apprenticeships	
<i>Other children-related data</i>			
Free school meals	2016- 2020 (Year totals)	Rate of pupils	Male pupils
		eligible to	Female pupils
		receive free	Total pupils
		school meals per	In the most income deprived areas
		1000 pupils	In the least income deprived areas

183

184

185 **Statistical analysis**

186 An exploratory analysis was conducted to look at the associations between health and
187 socioeconomic outcomes, the pandemic, and selected patient or population demographics. To examine
188 differences between the pre- and post-pandemic periods, a dummy variable for pre-March 2020 (0s) and
189 post-March 2020 (1s) was created. Where data was provided by week, the week beginning 16th March
190 2020 was taken as the start of the pandemic in Fleetwood. For monthly aggregated data, the
191 beginning of the pandemic was taken as 1st March 2020.

192 Weekly hospital admission rates stratified by age were created using Fleetwood population estimates
193 for age bands 0-14, 15-24, 25-44, 45-64, 65-84, and 85+ as denominators. To calculate weekly rates of
194 hospital admissions stratified by diagnosis, and of new diagnoses or consultations in primary care, the
195 total Fleetwood population estimate was used. Total Fleetwood population estimates were available
196 for years 2016-2019. Population rates for 2020 and 2021 were created using the 2019 population as
197 the denominator.

198 For monthly rates of Universal Credit claimants in Fleetwood stratified by age, population estimates
199 were calculated using population estimates for age bands 16-24, 25-54, and 55+ for years 2016-2021,
200 which cover labour market age groups. Population rates for 2020 and 2021 were created using the
201 2019 population as the denominator. Young adults who can be classed as NEET must be aged between
202 16 and 24-year-olds. However, population estimates are only available for 15-17 and 18-24-year-olds.
203 To create rates of young people on apprenticeships or NEET, population estimates of 15-24 year olds
204 were used as a denominator

205 Rates and counts were plotted with time (month or week depending on data availability). Differences
206 between the pre-March 2020 and post-March 2020 periods were tested using t-tests (continuous data)
207 or Chi-squared tests (categorical data) when looking at group differences, with a p-value <0.05
208 threshold for statistical significance.

209 **Results**

210 **Hospital admissions**

211 The unadjusted trend in overall hospital admissions of residents in Fleetwood is shown in Figure 1.
212 These plots suggest there was a fall in hospital admissions following the onset of the COVID-19 pandemic in

213 March 2020 and low levels of overall hospital admissions have been sustained in the months since. The
214 demographics patterns of patients being admitted to hospital changed following the pandemic for some
215 patient groups. While the distribution of hospital admissions between patients of different sexes, or from
216 difference income deprivation areas, remained similar in the post-March 2020 period (not shown), there
217 were changes in the age demographics of patients being admitted to hospital (Figure 1). Figure 1 shows the
218 time series trend in hospital admissions broken down by six age bands, indicating that admissions for
219 patients aged between 0 and 24-years-old saw substantial falls.

220 **Hospital admissions by diagnosis**

221 Changes in hospital admission rates in the post-March 2020 period also differed depending on the
222 primary diagnosis patients had upon admission. The time series trends of hospital admission rates for
223 patients with a primary diagnosis of a respiratory condition, cardiovascular disease, and mental health
224 are shown in Figure 2, as examples of some of the different trends in the post-March 2020 period.

225 *Admissions with a primary respiratory diagnosis*

226 Immediate falls in admissions where the primary diagnosis was respiratory-related in Spring 2020 were
227 followed by sustained low admission rates up until the most recent week data were available for. As
228 indicated in Figure 2 this remains the case even when COVID-19 admissions are included. Therefore it
229 is unlikely that the fall in admissions for reasons relating to COPD and pneumonia was offset by the
230 same patients being admitted with COVID-19, although there is likely to be some overlap. Prior to
231 March 2020, admissions with a primary respiratory diagnosis accounted for 43% of all admissions,
232 dropping in post-March 2020 to 37% (including COVID-19) and 27% (excluding COVID-19) (Table 3).

233 *Admissions with a primary cardiovascular diagnosis*

234 In contrast to respiratory-related admissions, admissions primarily related to cardiovascular disease
235 dropped sharply after March 2020 but appear to have increased again to normal levels by Autumn
236 2020.

237 *Admissions related to mental health*

238 Further patterns were observed for mental health-related hospital admissions. There was no apparent
239 immediate impact in admissions of patients with a primary diagnosis of mental health following

240 March 2020, although in Spring 2021 there are indications that admissions begin to rise again,
241 although this increase is no more extreme than what has been experienced in the pre-COVID time (e.g.
242 2017).

243 However, there has been a sustained fall in admissions of patients with a secondary diagnosis of
244 mental health in the post-March 2020 period. While the rate of Fleetwood population being admitted
245 with a secondary mental health diagnosis fell, the proportion of all hospital admissions in this
246 diagnosis category actually increased in the post-March 2020 period (31% to 38%, $p < 0.01$) (Table 3).
247 This likely indicates that admissions with a secondary mental health diagnosis did not fall as much as
248 overall hospital admissions post-March 2020, or as much as other health conditions common to
249 hospital admissions pre-March 2020 (e.g. non-COVID respiratory).

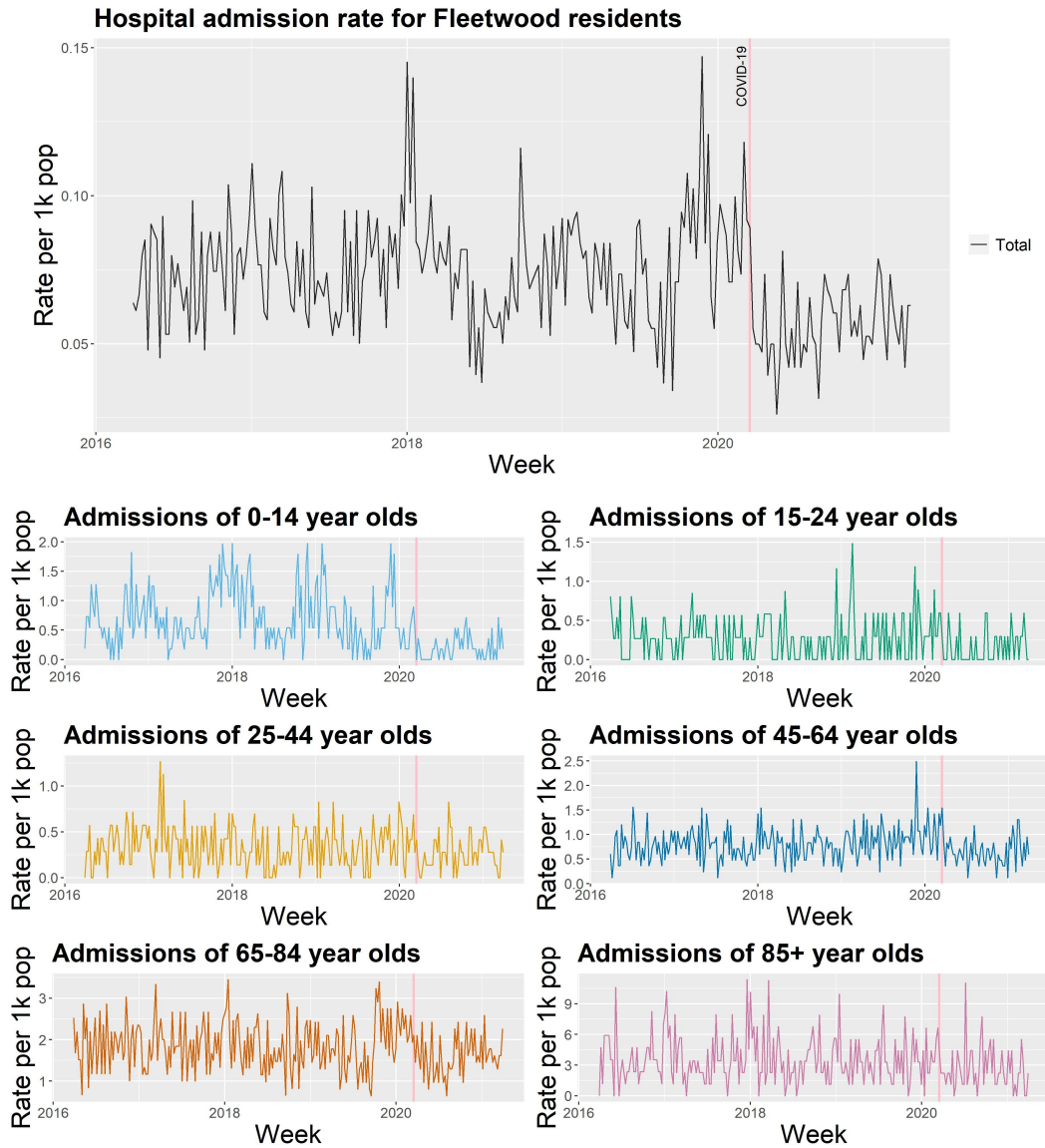
250

251

252

253

254



255

Figure 1: Weekly hospital admission rates stratified by age group

256

257

258

It is made available under a [CC-BY-NC-ND 4.0 International license](https://creativecommons.org/licenses/by-nc-nd/4.0/) .



Figure 2: Weekly hospital admission rates stratified by selected primary diagnosis groups

260

261

262

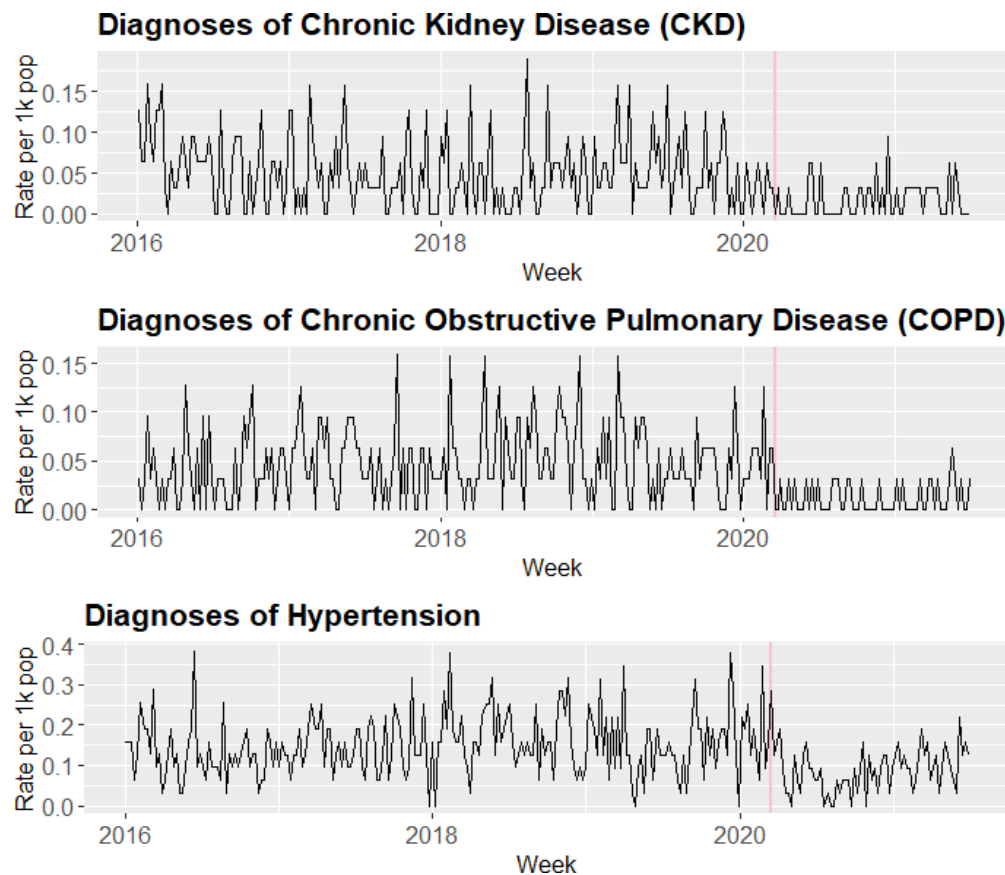
Table 3: Proportion of hospital admissions and primary care diagnoses in selected patient groups

Hospital admissions				
	Primary diagnosis	pre-March 2020	post-March 2020	p value ¹
Respiratory	No	0.57	0.63	
	Yes	0.43	0.37	<0.01
	Yes (excl. Covid)	0.43	0.27	<0.01
Cardiovascular	No	0.71	0.66	
	Yes	0.29	0.34	<0.01
Mental Health	No	0.96	0.95	
	Yes	0.04	0.05	0.30
Secondary Mental Health	No	0.69	0.62	
	Yes	0.31	0.38	<0.01
Diagnosis in primary care				
	Patient group	pre-March 2020	post-March 2020	p value ¹
Depression	0-24	0.16	0.22	
	25-64	0.75	0.67	
	65+	0.10	0.11	0.04
Chronic kidney disease	Female	0.56	0.30	
	Male	0.44	0.70	<0.01
Peripheral Arterial Disease	Female	0.48	0.20	
	Male	0.52	0.80	0.02
Asthma	Most Deprived	0.66	0.52	
	Least Deprived	0.34	0.48	0.04
¹ X ² test				

263 Primary care

264 In primary care, there was a fall in the incidence rate of new diagnosis across several different diagnostic
265 groups, although the patterns in the post-March 2020 period vary depending on diagnostic and demographic
266 groups. Examples of differing patterns post-March 2020 are shown in Figure 3. These plots show the trend over
267 time for the rate of new diagnoses in primary care for chronic obstructive pulmonary disease (COPD) and
268 chronic kidney disease (CKD), both of which saw considerable and sustained falls in recorded new diagnoses.
269 Diagnosis of hypertension also saw a sudden fall in Spring 2020, although the rates of new diagnoses have been
270 increasing again since Summer 2020.

271 The changes in rates of new diagnoses between the pre- and post-March 2020 period were compared for each
272 diagnostic group across different sexes, age groups, and areas of income deprivation (Table 3). There were
273 significant differences in the proportion of diagnoses for depression among young people (aged up to 24
274 years), which has grown in the post-March 2020 period. Additionally, a lower proportion of new diagnoses of
275 chronic kidney disease (0.30 vs. 0.56, $p < 0.01$) and peripheral arterial disease (0.48 vs. 0.20, $p = 0.02$) were
276 among women in the post-March 2020, the reverse of the relationship with sex and diagnosis in the years
277 previous (Table 3). The proportion of new diagnoses for asthma among patients living in the most income
278 deprived areas appears to have fallen in the post-March 2020 period (0.66 vs. 0.52, $p = 0.04$).



279

280 **Cancer**

281 While there were some changes in the characteristics of patients in Fleetwood registered as having
 282 cancer, or receiving a cancer fast track referral, between the pre- and post- March 2020 temporal
 283 periods, the differences did not reach statistical significance in univariate tests.

284

285 Table 4: Proportion of cancer registrations and fast track referrals in patient groups

			pre-March 2020	post-March 2020	p value ¹
Cancer registrations (Jan 2016 – June 2021)	Age band	0-24	0.01	0.00	
		25-64	0.27	0.32	
		65+	0.72	0.70	0.77
	Sex	Female	0.49	0.42	
		Male	0.51	0.58	0.28
	Income area	Most Deprived	0.50	0.46	
Least Deprived		0.50	0.54	0.66	
Cancer fast track referrals (June 2016 – June 2021)	Age band	0-24	0.00	0.00	
		25-64	0.25	0.24	
		65+	0.75	0.75	1
	Sex	Female	0.53	0.51	
		Male	0.47	0.49	0.73
	Income area	Most Deprived	0.48	0.43	
Least Deprived		0.52	0.57	0.38	
¹ X ² test for sex and income; Fisher’s exact test for age band					

286

287 **Crime**

288 The number of street crime incidents in Fleetwood recorded by the police saw an increase in 2020,
 289 particularly in the first half of that year. As the plots in Figure 4 suggest, the trend in overall street crime
 290 in 2020 appears to be related to spikes in the number of anti-social behaviour incidents in that
 291 period, which likely include the breaking of COVID-19-related restrictions.

292 While in the pre and post-March 2020 period, most crimes occurred in the most income deprived
293 areas, the proportion of 'anti-social behaviour' and 'violence and sexual offences' crimes occurring in
294 the most deprived areas fell post-March 2020, with a corresponding proportion increase in the least
295 deprived areas (Table 4). Chi-squared tests indicated that this difference was only statistically
296 significant for anti-social behaviour crimes (90.19% vs 88.75% in Most Deprived Areas, $p < 0.01$) (Table
297 4).

298

299

300

301

302

303

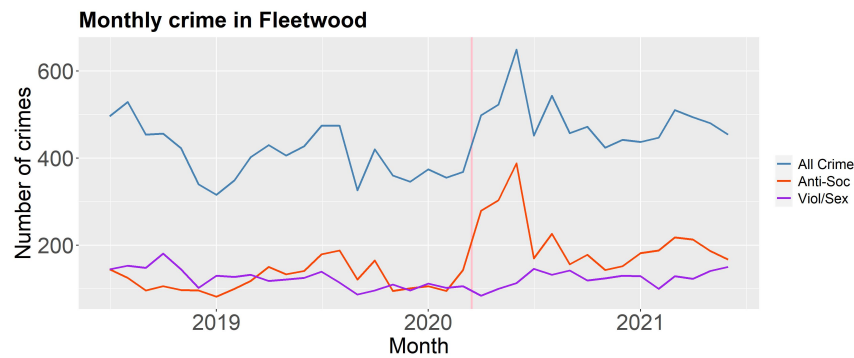


Figure 3: Number of monthly street crimes in Fleetwood stratified by the three largest crime categories

304 **Unemployment**

305 The rate of people receiving Universal Credit each month is comparable over time using the
306 Alternative Claimant Count (ACC). This is an indication of the number of people who are receiving
307 Universal Credit under the 'searching for work' condition, meaning they are required to look for
308 work while receiving financial support.

309 Table 4 shows the monthly average ACC rate for Fleetwood in the pre- and post-March 2020 periods.
310 It indicates there was a statistically significant increase in the rate of claimants per 1000 population
311 post-March 2020 (27.4 vs 50.6, $p < 0.01$). In the post-March 2020 period, existing differences between
312 male and female claimants became larger, with a greater proportion of male claimants post-March
313 2020 (Table 4).

314 Where available, variables have been stratified by income deprivation area, capturing differences
315 between areas in Fleetwood among the 20% most deprived areas nationally ('Most' in Table 4) and
316 those that are less deprived comparatively ('Least' in Table 4). Post-March 2020, the proportion of
317 younger claimants and those living in the least deprived areas of Fleetwood grew (Table 4). Figure 5
318 shows the time trends in claimant rates split by age.

319

320

Table 5: Group differences for selected social and economic indicators

321

pre and post-March 2020

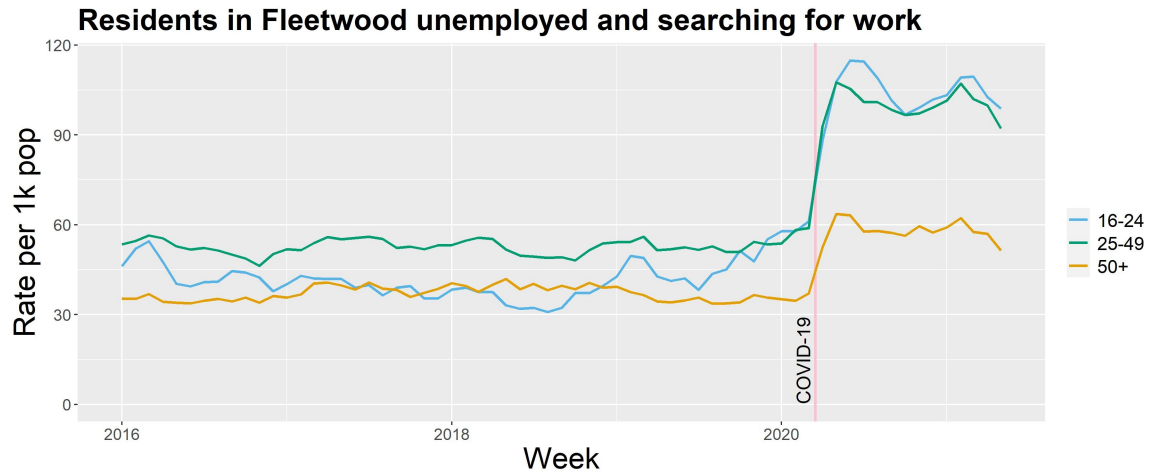
			pre-March 2020	post-March 2020	p value ¹	
All Crime	Income (%)	Most	89.48	89.27	0.4146	
		Least	10.52	10.73		
- Anti-Social Behaviour	Income (%)	Most	90.19	88.75	< 0.01	
		Least	9.81	11.25		
- Violence and Sexual Off	Income (%)	Most	90.78	89.93	0.0654	
		Least	9.22	10.07		
Unemployment (ACC)	Monthly rate ²	-	27.4	50.6	< 0.01	
		Age (%)	16-24	0.17	0.21	< 0.01
			25-49	0.56	0.56	
			50+	0.27	0.23	
		Sex (%)	Female	0.44	0.39	< 0.01
Male	0.56		0.61			
	Income Area (%)	Most Dep	0.81	0.73	< 0.01	
		Least Dep	0.19	0.27		
Apprenticeships	Monthly rate ²	-	21.9	25.0	0.1	
NEET	Monthly rate ²	-	12.4	11.0	0.3	
Free School Meals	Income area rate ²	Most Dep	344	428	< 0.01	
		Least Dep	120	167	0.04	

322

¹ X² tests for group differences. T-test for differences in rates.

323

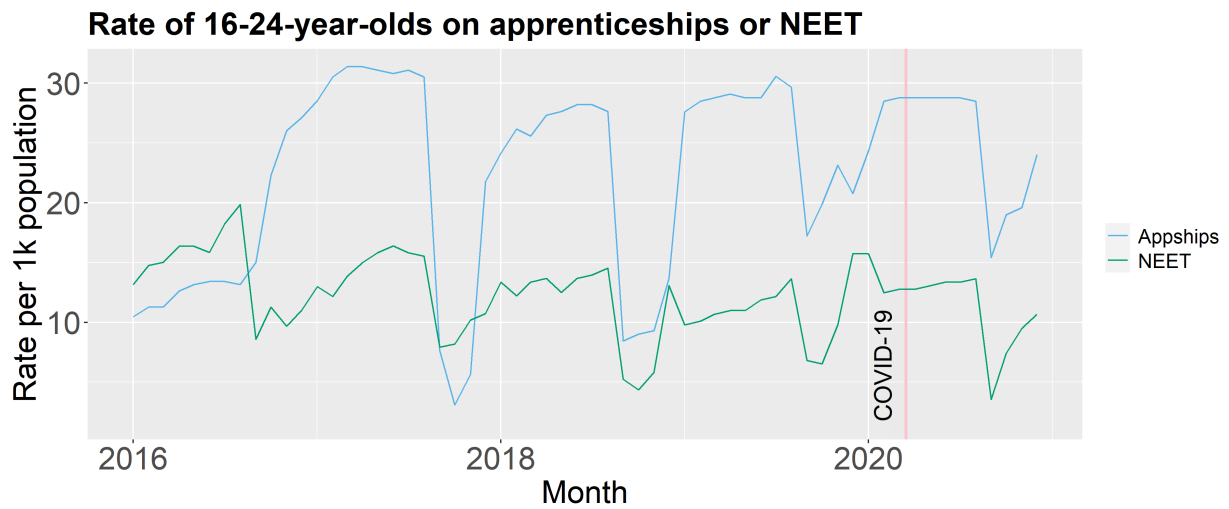
² Mean rate per 1000 population



325

Figure 4: Rate of Fleetwood residents claiming Universal Credit under the 'Searching for Work' condition (Alternative Claimant Count)

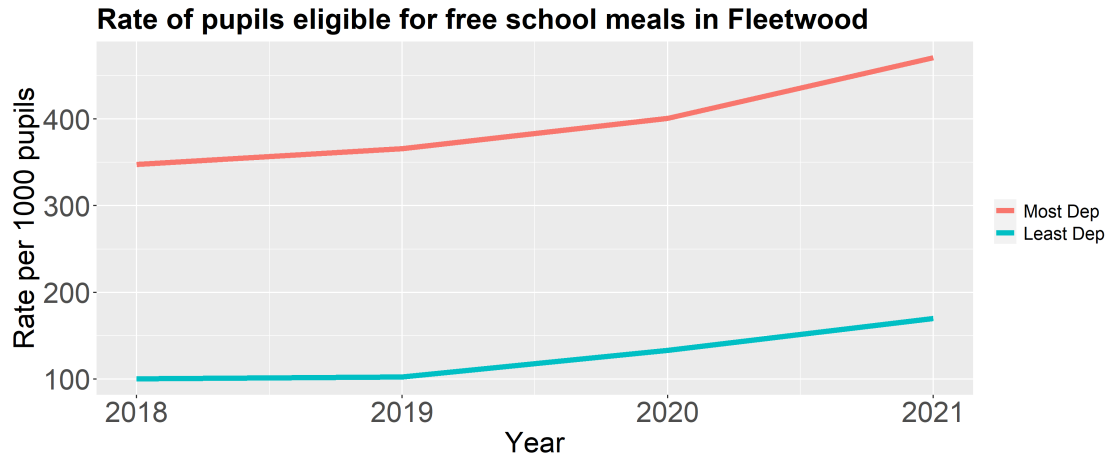
326



327

328

Figure 5: Rate of 16-24 year olds in Fleetwood on apprenticeships or NEET



329

330

Figure 6: Rate of school pupils eligible to receive free school meals in Fleetwood

331

by income deprivation area

332

333

School leaver opportunities

334

335

336

337

338

339

340

341

342

The study dataset includes information about the rate of 16-24-year-olds in Fleetwood either enrolled in an apprenticeship or 'Not in Education, Employment, or Training' (NEET) from 2016 until 2020. Since 2016 the rates of young people who are NEET appear to have been decreasing and the rates on apprenticeships appears moderately stable (Figure 6). Both appear to have seasonal trends, which likely correspond to school leaving dates. The mean monthly rates for each year in Table 5 suggest that 2020 rates appear to counter the trend somewhat, with rates of NEET increasing slightly and those on apprenticeships decreasing on the 2019 figure, although these changes are very small. Furthermore, when comparing the pre and post-March 2020 period, the post-March 2020 rates are higher overall, although this is not statistically significant (Table 4).

343

344

Table 6: Mean rate (per 1k) of 16-24 year olds on apprenticeships or NEET

Year	Apprenticeships	NEET
2016	15.8	14.2
2017	23.6	12.9
2018	21.3	11.3
2019	26.1	10.8
2020	25.3	11.5

345

346 **Free School Meals**

347 As the plot in Figure 7 and summary statistics in Table 4 show, the mean rate of pupils entitled to receive
348 free school meals per 1000 pupils grew in the post-COVID-19 period in both the most and least income
349 deprived areas in Fleetwood. While the numbers of pupils eligible for free school meals is much higher in
350 the most deprived areas both pre- and post-COVID-19, the rate of pupils eligible for free school meals
351 per 1000 pupils increased by 40% in the least deprived areas (120 pre vs 167 post, $p=0.04$), compared to
352 24% in the most deprived areas (344 pre vs 428 post, $p<0.01$).

353 **Discussion**

354 The findings reported in this manuscript are those from an exploratory analysis of routinely collected
355 secondary health and socioeconomic data for Fleetwood residents. Temporal and spatial data were collected
356 to examine differences in outcomes in different areas of Fleetwood, a socially deprived coastal town in
357 North West England. While exploring mostly univariate associations between key variables of interest,
358 these initial findings indicate the degree to which the health and social wellbeing of residents of
359 Fleetwood have been impacted in the first 18 months following the COVID-19 pandemic. The results
360 point towards some key areas that call for more comprehensive analysis using survival, multivariate time
361 series and spatial analyses. These areas of interest include the large and sustained falls in hospital
362 admissions for respiratory-related conditions, the changes in the age and sex demographics of incidence

363 of diagnosis in primary care, and indications of changes to some social outcomes in some of the least
364 deprived areas of the towns.

365 The time trends of hospital admissions and primary care diagnoses, along with the statistical test of pre-
366 and post-March 2020 differences, indicate the varied nature of the pandemic's impact on different
367 patient populations. This corresponds to other study findings, suggestive of condition-varying patterns in
368 healthcare use in the first six months of 2020 (4). Covering a longer time period, the data in this
369 ongoing study indicates longer-term trends (18 months) of healthcare use in the post-March 2020
370 period. Some of the most striking findings are the sustained falls in some healthcare outcomes related to
371 non-COVID-19 respiratory conditions in this period. By June 2021, there were still no signs of the rate of
372 new chronic obstructive pulmonary disease (COPD) diagnoses increasing to pre-March 2020 levels.
373 However, low rates likely reflect the barrier to confirming a diagnosis of COPD using spirometry, a
374 breathing examination temporarily not in use because of COVID-19 infection concerns (30). The
375 Association for Respiratory Technology and Physiology (ARTP) and the Primary Care Respiratory Society
376 (PCRS) estimate the number of patients awaiting a spirometry diagnosis to be around 200–250 patients
377 per 500,000 population (30). While these will not all be COPD diagnoses, many patients with suspected
378 COPD are likely to have been put on a 'waiting list' to be formally diagnosed before being placed on a
379 COPD register. While some falls in diagnosis may relate to system barriers rather than patients not being
380 seen in primary care, they could nonetheless lead to delays in care management and quicker
381 deterioration for some patients. Additionally, the rate of hospital admissions where the primary
382 diagnosis is a non-COVID-19 respiratory condition has also remained consistently low throughout the
383 study period, suggesting that falls in admissions documented early on in the pandemic are persisting into
384 2021 (7).

385 This exploratory analysis also points towards changing patterns to patient and population demographics
386 of some health and socioeconomic outcomes in the pre- and post-March 2020 periods. Some of the
387 associations in the pre- March 2020 period have been reversed, as is the case for women making up a
388 much lower proportion of diagnoses for chronic kidney disease or peripheral arterial disease, a pattern
389 not easily explained. Other trends may have more apparent explanations. For example, the increase in
390 the proportion of depression diagnoses among young people aligns to a growing research literature
391 pointing towards the impact the pandemic has had on that population group's mental wellbeing,
392 who have experience substantial disruptions to school, social, and working life (31,7). Within this
393 population, sub-groups may be particularly affected. There is evidence to suggest that among 16-25

394 years old, being female and having low social support were both predictors of mental distress during the
395 pandemic (32). However, given that some of the most significant contributors to mental distress among
396 young people during COVID have been reduced social support, activities, and increased loneliness, it
397 may be that mental wellbeing will increase with greater social interactions (32). Assessing the longevity
398 of this impact will require longitudinal research that follows this population over many years.

399 Several socioeconomic outcomes, including the rate of children eligible to receive free school meals,
400 the number of street crimes, and unemployment, appear to have increased in the medium term in
401 areas classified as the 'least deprived' in Fleetwood. This does not necessarily contradict suggestions
402 made elsewhere that the COVID-19 pandemic will exacerbate social inequalities in health and social
403 outcomes, with a greater impact on those experiencing socioeconomic disadvantage (19). The apparent
404 changes in the 'least deprived' areas could indicate the pre-pandemic vulnerability of population groups
405 experiencing moderate but not severe financial insecurity. When compared to all other
406 neighbourhoods in England, the 'least deprived' areas in Fleetwood sit in the middle of national
407 deprivation rankings. Other studies have suggested that those in middle-income housing, particularly
408 those who were in work but on low pay, may have experienced the greatest financial disruption to
409 their lives (17). It is possible that some residents in the 'least deprived' areas of Fleetwood were more
410 vulnerable than others to the economic impacts of the pandemic.

411 **Conclusion**

412 There are early indications that the COVID-19 pandemic has had an impact on several health and social
413 outcomes in Fleetwood, a predominantly socially deprived town in North West England. An exploratory
414 analysis of these impacts suggests they may be patterned differently depending on health conditions,
415 patient and population demographics, and area income deprivation. Examining these trends in
416 multivariate analyses will test these associations and establish the strength of the impact on residents
417 in this coastal community.

418 **References**

- 419 1. Bambra C, Riordan R, Ford J, Matthews F. The COVID-19 pandemic and health inequalities. *J Epidemiol*
420 *Community Health*. 2020 Jun 13; 74: 964-968
- 421 2. Marmot M, Allen J, Goldblatt P, Herd E, Morrison J. Build Back Fairer: The COVID-19 Marmot Review.
422 2020.
- 423 3. Power M, Doherty B, Pybus K, Pickett K. How COVID-19 has exposed inequalities in the UK food system:
424 The case of UK food and poverty [version 2; peer review: 5 approved]. *Emerald Open Res*. 2020 May 13;2(11)
- 425 4. Mansfield KE, Mathur R, Tazare J, Henderson AD, Mulick AR, Carreira H, et al. Indirect acute effects of
426 the COVID-19 pandemic on physical and mental health in the UK: a population-based study. *Lancet Digit Heal*.
427 2021;3(4).
- 428 5. Mulholland RH, Wood R, Stagg HR, Fischbacher C, Villacampa J, Simpson CR, et al. Impact of COVID-19
429 on accident and emergency attendances and emergency and planned hospital admissions in Scotland: an
430 interrupted time-series analysis. *J R Soc Med*. 2020;113(11):444–53.
- 431 6. Xiong J, Lipsitz O, Nasri F, Lui LMW, Gill H, Phan L, et al. Impact of COVID-19 pandemic on mental
432 health in the general population: A systematic review. *J Affect Disord*. 2020;277.
- 433 7. Alsallakh MA, Sivakumaran S, Kennedy S, Vasileiou E, Lyons RA, Robertson C, et al. Impact of COVID-19
434 lockdown on the incidence and mortality of acute exacerbations of chronic obstructive pulmonary disease:
435 national interrupted time series analyses for Scotland and Wales. *BMC Med*. 2021 Dec 17;19(1).
- 436 8. Sykes DL, Faruqi S, Holdsworth L, Crooks MG. Impact of COVID-19 on COPD and asthma admissions,
437 and the pandemic from a patient’s perspective. *ERJ Open Res*. 2021 Jan;7(1).
- 438 9. Grabowski D, Overgaard M, Meldgaard J, Johansen LB, Willaing I. Disrupted Self-Management and
439 Adaption to New Diabetes Routines: A Qualitative Study of How People with Diabetes Managed Their Illness
440 during the COVID-19 Lockdown. *Diabetology*. 2021 Jan 12;2(1).
- 441 10. Chen S, Jones PB, Underwood BR, Moore A, Bullmore ET, Banerjee S, et al. The early impact of COVID-
442 19 on mental health and community physical health services and their patients’ mortality in Cambridgeshire
443 and Peterborough, UK. *J Psychiatr Res*. 2020;131.

- 444 11. Chen S, She R, Qin P, Kershenbaum A, Fernandez-Egea E, Nelder JR, et al. The Medium-Term Impact of
445 COVID-19 Lockdown on Referrals to Secondary Care Mental Health Services: A Controlled Interrupted Time
446 Series Study. *Front Psychiatry*. 2020;11.
- 447 12. Carr MJ, Steeg S, Webb RT, Kapur N, Chew-Graham CA, Abel KM, et al. Effects of the COVID-19
448 pandemic on primary care-recorded mental illness and self-harm episodes in the UK: a population-based
449 cohort study. *Lancet Public Heal* [Internet]. 2021;6(2):e124--e135. Available from:
450 [http://dx.doi.org/10.1016/S2468-2667\(20\)30288-7](http://dx.doi.org/10.1016/S2468-2667(20)30288-7)
- 451 13. Boden M, Zimmerman L, Azevedo KJ, Ruzek JI, Gala S, Abdel Magid HS, et al. Addressing the mental
452 health impact of COVID-19 through population health. *Clin Psychol Rev* [Internet]. 2021;85(July 2020):102006.
453 Available from: <https://doi.org/10.1016/j.cpr.2021.102006>
- 454 14. Pierce M, Hope H, Ford T, Hatch S, Hotopf M, John A, et al. Mental health before and during the
455 COVID-19 pandemic: a longitudinal probability sample survey of the UK population. *The Lancet Psychiatry*.
456 2020 Oct;7(10).
- 457 15. Witteveen D. Sociodemographic inequality in exposure to COVID-19-induced economic hardship in the
458 United Kingdom. *Research in Social Stratification and Mobility*. 2020;69.
- 459 16. Fana M, Torrejón Pérez S, Fernández-Macías E. Employment impact of Covid-19 crisis: from short term
460 effects to long terms prospects. *J Ind Bus Econ* [Internet]. 2020;47(3):391–410. Available from:
461 <https://doi.org/10.1007/s40812-020-00168-5>
- 462 17. Brewer M, Gardiner L. The initial impact of COVID-19 and policy responses on household incomes.
463 *Oxford Rev Econ Policy*. 2020;36:S187–99.
- 464 18. HM Treasury, The Rt Hon Rishi Sunak MP. The Chancellor Rishi Sunak provides an updated statement
465 on coronavirus. [Internet]. 2021 [cited 2021 Oct 20]. Available from:
466 [https://www.gov.uk/government/speeches/the-chancellor-rishi-sunak-provides-an-updated-statement-on-](https://www.gov.uk/government/speeches/the-chancellor-rishi-sunak-provides-an-updated-statement-on-coronavirus)
467 [coronavirus](https://www.gov.uk/government/speeches/the-chancellor-rishi-sunak-provides-an-updated-statement-on-coronavirus)
- 468 19. Whitehead M, Taylor-Robinson D, Barr B. Poverty, health, and covid-19. *BMJ*. 2021 Feb 12; 372
- 469 20. Food Standards Scotland. COVID-19 Consumer Tracker. 2020;(May).

- 470 21. Nghiem N, Wilson N. Potential impact of COVID-19 related unemployment on increased cardiovascular
471 disease in a high-income country: Modeling health loss, cost and equity. PLoS One [Internet]. 2021;16(5
472 May):1–14. Available from: <http://dx.doi.org/10.1371/journal.pone.0246053>
- 473 22. Witteveen D, Velthorst E. Economic hardship and mental health complaints during COVID-19. Proc Natl
474 Acad Sci U S A. 2020;117(44):27277–84.
- 475 23. Spencer M. “Healthier fleetwood”: Creating healthier communities via improved social networking in a
476 disadvantaged area of the UK. Br J Diabetes Vasc Dis. 2017;17(3):107–10.
- 477 24. Ministry of Housing Communities & Local Government. English indices of deprivation 2019. Index of
478 multiple deprivation [Internet]. 2019. Available from: [https://www.gov.uk/government/statistics/english-
479 indices-of-deprivation-2019](https://www.gov.uk/government/statistics/english-indices-of-deprivation-2019)
- 480 25. Bishop P. Knowledge diversity and entrepreneurship following an economic crisis: an empirical study of
481 regional resilience in Great Britain. Entrep Reg Dev [Internet]. 2019 May 27;31(5–6):496–515. Available from:
482 <https://doi.org/10.1080/08985626.2018.1541595>
- 483 26. Brown R, Cowling M. The geographical impact of the Covid-19 crisis on precautionary savings, firm
484 survival and jobs: Evidence from the United Kingdom’s 100 largest towns and cities. International small
485 business journal. 2021.
- 486 27. Office for National Statistics. Population Estimates – local authority based on five year age bands. 2020
487 June 24.
- 488 28. Davenport A, Farquharson C, Rasul I, Sibieta L, Stoye G. The geography of the COVID-19 crisis in
489 England [Internet]. 2020 [cited 2021 May 10]. Available from:
490 <https://www.nuffieldfoundation.org/news/geographic-impact-covid-19-crisis-diffuse>
- 491 29. Whitty C. Chief Medical Officer’s annual report 2021: health in coastal communities. 2021.
- 492 30. Association for Respiratory Technology and Physiology, Primary Care Respiratory Society, British
493 Thoracic Society. Risk minimisation in spirometry re-start. 2021.
- 494 31. Ravens-Sieberer U, Kaman A, Erhart M, Devine J, Schlack R, Otto C. Impact of the COVID-19 pandemic
495 on quality of life and mental health in children and adolescents in Germany. European Child Adolescent

496 Psychiatry. 2021 jan.

497 32. Rens E, Smith P, Nicaise P, Lorant V, Van den Broeck K. Mental Distress and Its Contributing Factors

498 Among Young People During the First Wave of COVID-19: A Belgian Survey Study. *Frontiers in Psychiatry*. 2021

499 jan;12.

500