

Supplementary Materials for
Contribution of endogenous and exogenous antibodies to clearance of SARS-CoV-2 during
convalescent plasma therapy
Marconato et al.

Summary of supplementary tables and figures

Table S1: Study schedule

Table S2: Inclusion/Exclusion criteria of trial participants (plasma recipients)

Table S3: Monitored parameters

Table S4: Primary and secondary outcomes

Table S5: Overview comorbidities

Table S6: Safety outcomes

Table S7: Severe adverse events (SAE)

Table S8: Pulmonary ordinal outcome

Table S9: Severity outcome of trial participants assessed by pulmonary ordinal outcome

Table S10: Laboratory measures and clinical parameters

Table S11: Summary convalescent donor demographics

Table S12: Hazard ratios of time to viral clearance for binding and neutralizing parameters, presence of comorbidity and baseline viral load in nasopharyngeal swab.

Fig. S1: Longitudinal assessment of primary and secondary outcomes

Fig. S2: Phylogenetic analysis of the SARS-CoV-2 isolates from trial participants

Fig. S3: No impact of neutralization activity on hospital release

Fig. S4: Sensitivity analysis for impact of plasma on viral clearance

Fig. S5: Spike specific binding and neutralizing antibodies are linked with rapid virus clearance

Fig. S6: No impact on viral clearance when stratifying based on the Elecsys assay

Fig. S7: Sensitivity of time to viral clearance when removing patients on remdesivir

Fig. S8: High neutralizing plasma leads to faster virus decay in nasopharyngeal swabs

Fig. S9: SARS-CoV-2 antibody reactivities are correlated within antibody classes

Fig. S10: Evolution of SARS-CoV-2 antibodies in trial participants

Fig. S11: Antibody response over time in the three trial participants incapable of mounting antibody response

Fig. S12: Sensitivity survival analysis adjusting for the impact of endogenous neutralization on virus clearance

Fig. S13: Sensitivity survival analysis adjusting for the impact of endogenous binding antibodies on virus clearance.

Table S2: Inclusion/exclusion criteria of trial participants

<u>Inclusion criteria:</u>	<u>Exclusion criteria:</u>
<p>A) Proven SARS-CoV-2 by PCR and hospitalization for COVID-19 in combination with either (1) or (2):</p> <p>(1) Age \geq 50</p> <p>AND (at least one):</p> <ul style="list-style-type: none"> ● Pre-existing cardiovascular disease ● Diabetic disease ● Immunodeficiency/immunosuppression ● Neoplastic disease ● COPD or chronic liver disease or chronic renal failure <p>(2) Age \geq 18</p> <p>AND (at least one):</p> <ul style="list-style-type: none"> ● SpO₂ \leq 94% on room air or requiring supplemental oxygen at screening ● Typical changes on chest x-ray and/or lung-CT scan ● Immunosuppression or neoplastic disease <p>B) Written informed consent as documented by signature (Appendix Informed Consent Form) of the patient or, in case of inability, of the next relative/care-taking person. In the latter case, an independent doctor will also be involved and her/his signature will be required in order to enrol the patient.</p>	<ol style="list-style-type: none"> 1. Contraindications to the class of drugs under study, e.g. known hypersensitivity or allergy to class of drugs or the investigational product (FFP) 2. Known IgA deficiency 3. Cytokine Release Syndrome grade \geq 3 4. Acute respiratory distress syndrome (ARDS) 5. Patients already hospitalized in intensive care unit and/or already receiving mechanical ventilation 6. Known or suspected non-compliance, drug or alcohol abuse 7. Previous enrolment into the current study 8. Enrolment of the investigator, his/her family members, employees and other dependent persons 9. Women who are pregnant or breast feeding 10. Intention to become pregnant during the course of the study 11. Lack of safe contraception, defined as: Female participants of childbearing potential, not using and not willing to continue using a medically reliable method of contraception for the entire study duration, such as oral, injectable, or implantable contraceptives, or intrauterine contraceptive devices, or who are not using any other method considered sufficiently reliable by the investigator in individual cases. Please note that female participants who are surgically sterilised/hysterectomised or post-menopausal for longer than 2 years are not considered as being of child bearing potential

Table S3: Monitored parameters

Monitored clinical parameter and laboratory measures	Baseline	Treatment period	Follow-up period
	Day 0	Day 0-2, 9	23 +/-1, 72+/-1
Clinical parameters:			
Blood pressure (mmHg), Heart rate (bpm*) Respiratory rate (bpm**) Body temperature (°C, ear) Oxygen saturation (SpO2 (%))	X	X	X
Laboratory measures:			
Blood count (WBC subsets), INR CRP (mg/L), Ferritin (ug/L), LDH (unit/L) D-dimer (mg/L), Fibrinogen (g/L), IL-6 Na, K, Ca, , Serum Creatinine (mg/dL) Liver enzymes: AST (SGOT) (U/L), ALT (SGPT) (U/L), γGT, Troponin I, Myoglobin Rapid urine test	X	X	X
25-OH Vitamin, Albumin Urin sediment IgG, IgG subclasses, IgA, IgM PT, PTT	X		
SARS-CoV-2 antibody binding response (IgM, IgG, IgA response against S1, S2, RBD, N) SARS-CoV-2 neutralizing antibody binding titers (NT50)	X		X
	X		
PCR for SARS-CoV-2 on nasal swab, plasma, BAL	X	X	X

*beat per minute, **breaths per minute,

Table S4. Primary and secondary outcomes

Primary outcomes:
(A) Safety measures
<ol style="list-style-type: none">1. Assessment for<ul style="list-style-type: none">• Transfusion related acute lung injury (TRALI)• Anaphylactic reactions• Hemolytic reactions2. Clinical monitoring and measurement of laboratory parameters<ul style="list-style-type: none">• During treatment episode: Day 0,1,2• Follow up : Day 4, Day 9, Day 23 +/- 1 and Day 72 +/- 1
(B) Efficacy measures
<ol style="list-style-type: none">1. Improvement of respiration:<ul style="list-style-type: none">• Respiratory rate (breaths per minute, bpm), Oxygen saturation (SpO2 (%))2. Improvement of laboratory measures:<ul style="list-style-type: none">• CRP (mg/L),• Ferritin (ug/L)• IL-6 (mg/L)• D-dimer (mg/L)• Fibrinogen (g/L)• LDH (unit/L)3. Reduction of hospitalization duration4. Prevention of ICU-admission or shortening of ICU-hospitalization
Secondary outcomes:
<ol style="list-style-type: none">1. Characterize humoral response (binding and neutralization) against SARS-CoV-22. Longitudinally assess viral shedding in nasopharyngeal swabs and blood samples

Table S5. Overview comorbidities

ID	Gender	Comorbidity	Comorbidity type	Immune suppression	Impaired antibody response	Endogenous SARS-CoV-2 neutralization at baseline	Log10 viral load NPS at baseline	Viral suppression blood at baseline	Remdesivir treatment	Steroid treatment	Convalescent plasma (NT50 low/high)	Clinical outcome at study completion (day 72)
1	Female	Yes	Solid organ transplant (kidney)	yes	No	Yes	4.7	Yes	No	No	high	1
2	Male	Yes	Cardiovascular disease	No	Yes	No	3.93	Yes	No	No	high	2
3	Female	Yes	Cardiovascular disease, Diabetic disease	No	No	Yes	4.48	Yes	No	No	high	1
4	Male	Yes	Cardiovascular disease, Neoplastic disease (Diffuse large-cell B cell NHL)	Yes	Yes	No	5.01	No	No	No	high	1
5	Male	Yes	Cardiovascular disease	No	No	Yes	4.34	Yes	No	No	low	1
6	Female	No		No	No	Yes	3.54	Yes	No	No	low	1
7	Male	Yes	Cardiovascular disease	No	No	Yes	4.65	Yes	No	No	low	1
8	Male	No		No	No	Yes	4.62	Yes	No	No	high	1
9	Female	No		No	No	Yes	5.32	No	No	No	high	1
10	Female	Yes	Cardiovascular disease, Diabetic disease	no	No	No	2.81	No	No	Yes	high	1
11	Male	Yes	Cardiovascular disease, Neoplastic disease (plasma cell leukaemia)	Yes	No	Yes	4.43	Yes	Yes	No	high	1
12	Male	Yes	Cardiovascular disease, Diabetic disease, COPD	No	No	No	5.86	No	No	No	low	1
13	Male	Yes	Cardiovascular disease	No	No	Yes	4.79	Yes	No	No	low	1
14	Male	No		No	No	Yes	3.77	No	No	No	high	1
15	Female	Yes	Cardiovascular disease, Neoplastic disease (CLL)	Yes	Yes	No	9.85	No	Yes	No	high	7
16	Male	Yes	Cardiovascular disease, Diabetic disease	No	No	Yes	3.91	No	No	No	low	1
17	Female	Yes	Cardiovascular disease, Diabetic disease	No	No	Yes	3.79	Yes	No	No	low	1
18	Female	No		No	No	No	5.8	No	Yes	No	low	2
19	Male	Yes	Cardiovascular disease, COPD	No	No	No	6.42	No	No	No	low	1
20	Male	No		No	No	No	3.85	No	No	No	low	1
21	Female	Yes	Cardiovascular disease, Diabetic disease	No	No	Na	4.39	Yes	No	No	high	1
22	Male	Yes	Cardiovascular disease, Chronic renal failure	No	No	Yes	5.15	Yes	No	No	high	1
23	Male	Yes	Cardiovascular disease, Diabetic disease	No	No	No	3.15	No	No	No	high	1
24	Male	Yes	Cardiovascular disease	No	No	Yes	6.97	No	No	Yes	high	2
25	Male	Yes	Cardiovascular disease	No	No	Yes	4.4	No	No	No	high	1
26	Male	Yes	Cardiovascular disease	No	No	No	5.56	No	No	Yes	low	2
27	Male	No		No	No	Yes	3.57	Yes	No	No	low	1
28	Female	Yes	Cardiovascular disease, Diabetic disease	No	No	Yes	5.19	No	No	Yes	high	1
29	Male	No		No	No	No	4.35	No	Yes	Yes	low	1
30	Male	Yes	Solid organ transplant (kidney)	Yes	No	No	4.56	Yes	No	No	high	1

Table S6: Safety outcomes

	Total
Complications of CPT therapy (safety), No (%)	
Transfusion Related Acute Lung Injury (TRALI)	0 (0%)
Anaphylactic Reactions (AR)	0 (0%)
Hemolytic Reactions (HR)	0 (0%)
Transfusion associated circulatory overload (TACO)	0 (0%)
Clinical and laboratory outcomes (efficacy), No (%)	
COVID-19 related death during the study	0 (0%)
Hospitalization in ICU	2/30 (6.67%)
Mechanical ventilation	2/30 (6.67%)

Table S7: Severe adverse events (SAE)

ID	Gender	Description of event	Description of intervention	Outcome	Comments, if relevant
3	Female	NSTEMI	No specific treatment needed	improved	Possible correlation with COVID-19
10	Female	Hospital acquired pneumonia (HAP)	antibiotics	resolved	COVID-19 resolved, HAP
15	Female	Hospital acquired pneumonia (HAP)	antibiotics	death	COVID-19 resolved, HAP
17	Female	Pulmonary Embolism	Anticoagulation with heparin and liquemin	resolved	Complication of COVID-19
18	Female	Respiratory insufficiency due to COVID-19	Patient transferred to the ICU and mechanical ventilation needed	resolved	-
20	Male	Arthritis (right lateral malleolus)	Local corticosteroids	resolved	-
26	Male	Respiratory insufficiency due to COVID-19	Patient transferred to the ICU and mechanical ventilation needed	resolved	

Table S8: Pulmonary ordinal outcome

1= Can independently undertake usual activities with minimal or no symptoms
2= Symptomatic and currently unable to independently undertake usual activities but no need of supplemental oxygen (or not above pre-morbid requirements)
3= Supplemental oxygen (<4 liters/min, or <4 liters/min above pre-morbid requirements)
4= Supplemental oxygen (≥4 liters/min, or ≥4 liters/min above pre-morbid requirements, but not high-flow oxygen)
5= Non-invasive ventilation or high-flow oxygen
6= Invasive ventilation, extracorporeal membrane oxygenation (ECMO), mechanical circulatory support, or new receipt of renal replacement therapy
7= Death

Table S9: Severity outcome of study participants assessed by pulmonary ordinal outcome

	Before/during therapy			Follow-up visits		Safety visits	
	Day 0	Day 1	Day 2	Day 4	Day 9	Day 23 +/- 1	Day 72 +/- 1
Ordinal scale							
1	0 (0%)	0 (0%)	0 (0%)	1 (3%)	12 (40%)	21 (70%)	25 (83%)
2	14 (47%)	16 (53%)	14 (47%)	16 (53%)	12 (40%)	6 (20%)	4 (13%)
3	10 (33%)	9 (30%)	10 (33%)	9 (30%)	3 (10%)	1 (3%)	0 (0%)
4	5 (17%)	4 (13%)	4 (13%)	2 (7%)	1 (3%)	0 (0%)	0 (0%)
6	1 (3%)	1 (3%)	2 (7%)	2 (7%)	2 (7%)	1 (3%)	0 (0%)
7	0 (0%)	0 (0%)	0 (0%)	0 (0%)	0 (0%)	1 (3%)	1 (3%)

Table S10: Longitudinal laboratory measures and clinical parameters of study participants

	Day 0	Day 1	Day2	Day 4	Day 9	Day 23 +/- 1	Day 72 +/- 1
Clinical parameters	median (IQR)	median (IQR) p-value	median (IQR) p-value	median (IQR) p-value	median (IQR) p-value	median (IQR) p-value	median (IQR) p-value
Respiratory rate	18 (16-22)	18 (16.2-24) 0.56	18 (16.2-23.8) 0.4	18 (14-22) 0.12	14 (14-17.5) 0.0015	14 (14-14) <0.001	14 (12-14) <0.001
Oxygen saturation level	94 (93-96)	94 (93-95) 0.56	94 (92.2-96) 0.45	95 (94-96) 0.36	97 (96-98) <0.001	97 (96-98) <0.001	97 (97-98) <0.001
Temperature (in °C)	37.1 (36.8-37.5)	37.1 (36.8-37.6) 0.85	37.1 (36.8-37.4) 0.85	36.9 (36.6-37.2) 0.043	36.8 (36.4-37) 0.028	36.8 (36.5-36.9) <0.001	36.6 (36.5-36.8) <0.001
Laboratory parameters	median (IQR)	median (IQR) p-value	median (IQR) p-value	median (IQR) p-value	median (IQR) p-value	median (IQR) p-value	median (IQR) p-value
CRP	98.5 (66.2-143.8)	92.5 (53.8-117.2) 0.11	76.5 (42.2-99.2) 0.0038	40 (19.2-58) <0.001	6.4 (3.5-18.8) <0.001	1.4 (0.8-4.9) <0.001	1.5 (0.6-2.6) <0.001
D-dimer	0.705 (0.5-1.2)	0.64 (0.4-1) 0.47	0.755 (0.5-1.1) 0.72	0.75 (0.5-1.1) 0.73	0.61 (0.4-1.4) 0.46	0.53 (0.4-0.8) 0.3	0.365 (0.3-0.5) 0.012
Ferritin	691 (456.5-1219.8)	716 (425.8-1152) 0.86	768 (486-1389) 0.92	734.5 (327.2-1278.2) 0.75	454.5 (249.8-592) 0.04	234 (122-311.5) <0.001	74 (43-170.2) <0.001
Fibrinogen	5.6 (5-6.1)	5.1 (4.7-5.5) 0.22	5.2 (4.7-6) 0.31	4.9 (4.3-5.8) 0.0062	4.1 (3.3-4.6) <0.001	3.3 (2.9-3.8) <0.001	3 (2.7-3.5) <0.001
IL-6	33.05 (18.6-53)	35.7 (21.2-67.3) 0.7	31 (14-49.7) 0.59	10.6 (4.8-26.6) 0.22	4.7 (3.3-10.3) 0.033	2.7 (1.9-4.1) 0.027	2.4 (1.9-4) 0.036
LDH	547.5 (489.5-687.5)	592 (522.8-713.8) 0.64	587 (504-703) 0.83	550 (459-696) 0.74	477 (410.8-545.8) 0.01	368 (326-458) <0.001	401.5 (358.8-439.8) <0.001

Table S11: Summary convalescent donor demographics

	Convalescent plasma (banked) (n=75)	Transfused (n=30)			
		Transfused (total)	NT50<250	NT50>250	p-value
Age , median (IQR)	33 (21-45.5)	26.5 (20-38.5)	26 (19-36)	27 (20-39)	0.73
Sex , No. (%)					
Male	75 (100%)	30 (100%)	13 (100%)	17 (100%)	1.00
Blood type , No (%)					
A	34 (45%)	13 (43%)	6 (46%)	7 (41%)	1
B	9 (12%)	5 (17%)	1 (8%)	4 (24%)	0.35
AB	1 (1%)	1 (3%)	1 (8%)	0 (0%)	0.43
O	28 (37%)	11 (37%)	5 (38%)	6 (35%)	1
Symptoms duration , median (IQR)					
	12 (8-16.5)	10.5 (7-15.5)	10 (7-14)	11 (7-16)	0.74

Table S12: Hazard ratios of time to viral clearance for binding and neutralizing parameters, presence of comorbidity and baseline viral load in nasopharyngeal swab. Estimates for both univariable and multivariable models are given.

Antibody	Antigen	Binding/neutralizing antibody				Baseline viral load				Presence of comorbidity			
		Univariate model		Multivariate model		Univariate model		Multivariate model		Univariate model		Multivariate model	
		HR (95% CI)	p-value	HR (95% CI)	p-value	HR (95% CI)	p-value	HR (95% CI)	p-value	HR (95% CI)	p-value	HR (95% CI)	p-value
Neutralization Roche		2.4 [1,5.9]	0.05	3 [1.1,8.1]	0.026	0.53 [0.34,0.84]	0.0064	0.52 [0.32,0.84]	0.008	0.56 [0.22,1.4]	0.23	0.62 [0.22,1.8]	0.36
		2.5 [1,6]	0.048	2.1 [0.75,5.6]	0.16	0.53 [0.34,0.84]	0.0064	0.46 [0.27,0.78]	0.0036	0.56 [0.22,1.4]	0.23	0.91 [0.33,2.5]	0.85
IgG	RBD	2.7 [1.1,6.5]	0.032	2.4 [0.93,6.2]	0.071	0.53 [0.34,0.84]	0.0064	0.5 [0.31,0.82]	0.0055	0.56 [0.22,1.4]	0.23	0.79 [0.28,2.2]	0.66
IgG	S1	1.5 [0.62,3.5]	0.38	3.5 [1.3,9.3]	0.013	0.53 [0.34,0.84]	0.0064	0.5 [0.3,0.82]	0.0061	0.56 [0.22,1.4]	0.23	0.8 [0.28,2.3]	0.68
IgG	S2	1.5 [0.63,3.6]	0.35	2.9 [1,7.9]	0.042	0.53 [0.34,0.84]	0.0064	0.46 [0.28,0.76]	0.0024	0.56 [0.22,1.4]	0.23	0.88 [0.32,2.5]	0.81
IgG	N	1.6 [0.66,3.8]	0.3	1.1 [0.44,2.6]	0.89	0.53 [0.34,0.84]	0.0064	0.54 [0.34,0.87]	0.012	0.56 [0.22,1.4]	0.23	0.92 [0.33,2.6]	0.88
IgG	RBD+S1+S2+N	1.7 [0.72,4.1]	0.22	2.5 [0.96,6.4]	0.062	0.53 [0.34,0.84]	0.0064	0.49 [0.3,0.8]	0.0039	0.56 [0.22,1.4]	0.23	0.85 [0.31,2.3]	0.76
IgA	RBD	2.5 [1,6]	0.048	6.1 [1.9,20]	0.0027	0.53 [0.34,0.84]	0.0064	0.4 [0.23,0.7]	0.0011	0.56 [0.22,1.4]	0.23	0.84 [0.3,2.4]	0.74
IgA	S1	1.7 [0.71,4.1]	0.24	6.1 [1.9,20]	0.0027	0.53 [0.34,0.84]	0.0064	0.4 [0.23,0.7]	0.0011	0.56 [0.22,1.4]	0.23	0.84 [0.3,2.4]	0.74
IgA	S2	0.48 [0.19,1.2]	0.1	4 [1.4,12]	0.011	0.53 [0.34,0.84]	0.0064	0.41 [0.24,0.69]	0.00096	0.56 [0.22,1.4]	0.23	0.73 [0.26,2.1]	0.55
IgA	N	2.2 [0.88,5.2]	0.092	5 [1.6,15]	0.0049	0.53 [0.34,0.84]	0.0064	0.4 [0.23,0.7]	0.0015	0.56 [0.22,1.4]	0.23	0.83 [0.3,2.3]	0.72
IgA	RBD+S1+S2+N	0.95 [0.4,2.3]	0.92	6.1 [1.9,20]	0.0027	0.53 [0.34,0.84]	0.0064	0.4 [0.23,0.7]	0.0011	0.56 [0.22,1.4]	0.23	0.84 [0.3,2.4]	0.74
IgM	RBD	1.7 [0.71,4.1]	0.23	2.5 [0.96,6.3]	0.061	0.53 [0.34,0.84]	0.0064	0.5 [0.31,0.83]	0.0064	0.56 [0.22,1.4]	0.23	0.73 [0.26,2]	0.55
IgM	S1	2.5 [1,6]	0.048	4.1 [1.5,11]	0.0063	0.53 [0.34,0.84]	0.0064	0.45 [0.27,0.77]	0.0031	0.56 [0.22,1.4]	0.23	0.75 [0.27,2.1]	0.58
IgM	S2	1.7 [0.72,4.1]	0.22	2.7 [1,7.2]	0.049	0.53 [0.34,0.84]	0.0064	0.46 [0.27,0.76]	0.0026	0.56 [0.22,1.4]	0.23	0.88 [0.32,2.5]	0.81
IgM	N	2.8 [1.1,6.7]	0.027	0.68 [0.26,1.8]	0.45	0.53 [0.34,0.84]	0.0064	0.57 [0.35,0.94]	0.028	0.56 [0.22,1.4]	0.23	0.98 [0.35,2.8]	0.98
IgM	RBD+S1+S2+N	1.6 [0.69,4]	0.26	3.4 [1.3,9.5]	0.017	0.53 [0.34,0.84]	0.0064	0.43 [0.25,0.72]	0.0016	0.56 [0.22,1.4]	0.23	0.97 [0.35,2.7]	0.96

Supplementary Figure legends

Fig. S1: Longitudinal assessment of primary and secondary outcomes. (A) Longitudinal clinical assessment of efficacy measures of all trial participants (n=30). Respiratory rate (breaths per minute (bpm)), level of oxygen saturation (SpO2%) and body temperature (°C). (B) Longitudinal laboratory measurements as defined in primary outcomes of all trial participants (n=30): C-reactive protein (CRP), D-dimer, Ferritin, Fibrinogen, IL-6 and LDH. Levels of significance are assessed by paired t-test comparing baseline to subsequent measures. Only significant p-values were shown. Numbers of trial participants with available measurements are indicated.

Fig. S2: Phylogenetic analysis of the SARS-CoV-2 isolates from 26 trial participants. Phylogenetic analysis of sequences derived from the 28 SARS-CoV-2 sequences, together with the background SARS-CoV-2 sequences extracted from gisaid that represent viral diversity across the WHO Switzerland region Zurich during the same time frame. Wuhan/WH04/2020 (EPI_ISL_406801), belonging to clade 19B, was chosen as the outgroup. The SARS-CoV-2 lineages are shown in the figure with the patient's sequences labeled with numbers. The scale bar indicates the number of nucleotide substitutions per site.

Fig. S3: No impact of neutralization activity on hospital release. Kaplan-Meier analysis assessing the time to hospital release according to the neutralization level of the plasma received. High neutralization activity NT50>250 (purple), low neutralization activity NT50< 250 (light green). The log-rank test is used to calculate the p-value.

Fig. S4: Sensitivity analysis for impact of plasma on viral clearance. (A) Kaplan Meier analysis and (B) survival function estimated with parametric survival model for interval-censored data assessing the time to viral clearance according to neutralization level excluding three trial participants incapable of mounting antibody response (n=27). (C) and (D) corresponding analyses to (A) and (B) but restricting the population to trial participants who did not receive remdesivir (n=26). (E) and (F) corresponding analyses to (A) and (B) but restricting the population to trial participants who did not receive remdesivir and were capable of mounting antibody response (n=24).

Fig. S5: Spike specific binding and neutralizing antibodies are linked with rapid virus clearance. Kaplan-Meier analyses of the effect of the different antibody reactivities stratified by response levels for all combinations of antibody

subtypes (IgG, IgA, IgM) and SARS-CoV-2 antigens (RBD, S1, S2 and NP) as well as the indicated sum of reactivities on the time to viral clearance. The effects of neutralization and binding activity as assessed with Roche S on the time to viral clearance are shown in the last row.

Fig. S6: No impact on viral clearance when stratifying based on the Elecsys assay. Forest plot depicting hazard ratios of univariable (grey) and multivariable (black) models of time to viral clearance including Elecsys Anti-SARS-CoV-2 (S) assay (U/ml). Multivariable analyses are corrected for baseline viral load and the presence of comorbidity. Low and high binding activity for each binding antibody parameter is stratified by the median binding reactivity.

Fig. S7: Sensitivity of time to viral clearance when removing patients on remdesivir. (A) Impact of antibody parameters on the time to viral clearance in multivariable parametric survival models when restricting to trial participants that did not receive remdesivir (n=26). Antibody reactivity of different antibody classes with SARS-CoV-2 antigens and neutralizing antibodies were included. Hazard ratios for individual antibody reactivities adjusted for the presence of comorbidity and the baseline viral load are shown. Significant results are marked in red. Low and high binding activity for each binding antibody parameter is stratified by the respective median binding reactivity. Low and high neutralization activity is stratified by a 50% neutralization titer of 250.

Fig. S8: High neutralizing plasma leads to faster virus decay in nasopharyngeal swabs. (A and B) Censored regression model estimating decay rate of viral load (log₁₀ viral load) of nasopharyngeal swabs from time to treatment initiation when restricting to trial participants that did not receive remdesivir (n=26), according to (A) the level of neutralization (low neutralization NT₅₀<250, light green; high neutralization, NT₅₀>250, purple) or (B) level of binding defined by the ABCORA test sum of S1 SOC values. Low and high sum of S1 binding is stratified by the median binding reactivity. Significance was assessed using a two-sided t-test.

Fig. S9: SARS-CoV-2 antibody reactivities are correlated within antibody classes. Spearman correlation matrix assessing correlation between binding and neutralizing characteristics of the banked plasma samples. Levels of significance are assessed by asymptotic t approximation of Spearman's rank correlation. Color shading denotes correlation coefficient. Stars depict *p< 0.05, ** p< 0.01, *** p< 0.001.

Fig. S10: Evolution of SARS-CoV-2 antibodies in trial participants. Longitudinal binding antibody activity of trial participants (n=29) at baseline (day 0, purple), day 9 (green) and day 72 (yellow) assessed with the multiplex SARS-CoV-2 ABCORA test. Depicted are signal over cutoff (SOC) values of IgG, IgA, IgM against RBD and S1, S2 and N. Box plots depict the interquartile ranges with vertical lines representing the minimum and maximum values.

Fig. S11: Antibody response over time in the three trial participants incapable of mounting antibody response.

Longitudinal binding antibody activity for the three trial participants assessed with the multiplex SARS-CoV-2 ABCORA test. Depicted are signal over cutoff (SOC) values of IgG, IgA, IgM against RBD, S1, S2 and N.

Fig. S12: Sensitivity survival analysis adjusting for the impact of endogenous neutralization on virus clearance. (A)

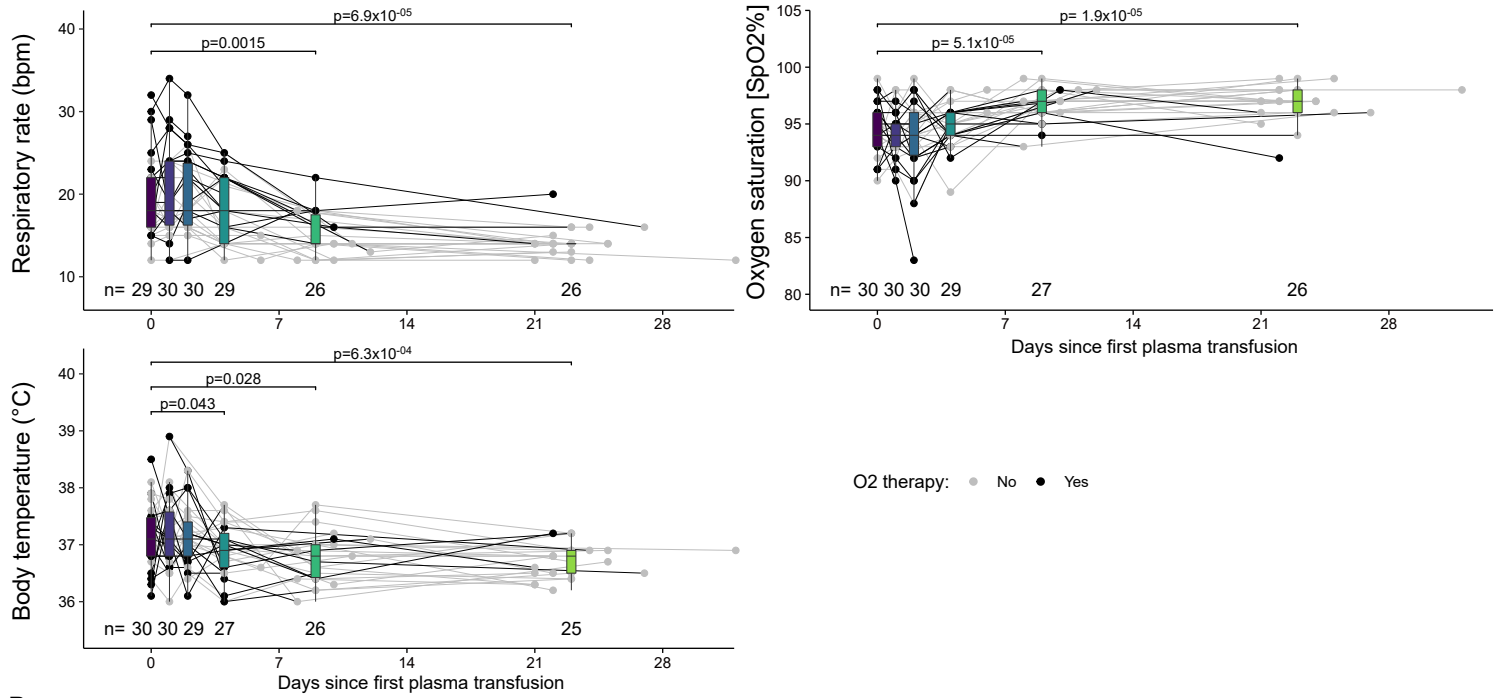
Forest plot showing the hazard ratios from univariable (grey) and multivariable (black) models of time to viral clearance for baseline viral load, the presence of comorbidity and both the exogenous and endogenous neutralization, when restricting the population to trial participants that did not receive remdesivir (n=26) (B) and restricting to trial participants that were capable of mounting antibody response (n=27).

Fig. S13: Sensitivity survival analysis adjusting for the impact of endogenous binding antibodies on virus clearance.

(A) Forest plot showing the hazard ratios from univariable (grey) and multivariable (black) models of time to viral clearance for baseline viral load, the presence of comorbidity and both the exogenous and endogenous S1 response (sum of IgG, IgA and IgM responses against S1), when restricting the population to trial participants that did not receive remdesivir (n=26) or (B) restricting to patients that were capable of mounting antibody response (n=26).

Figure S1

A



B

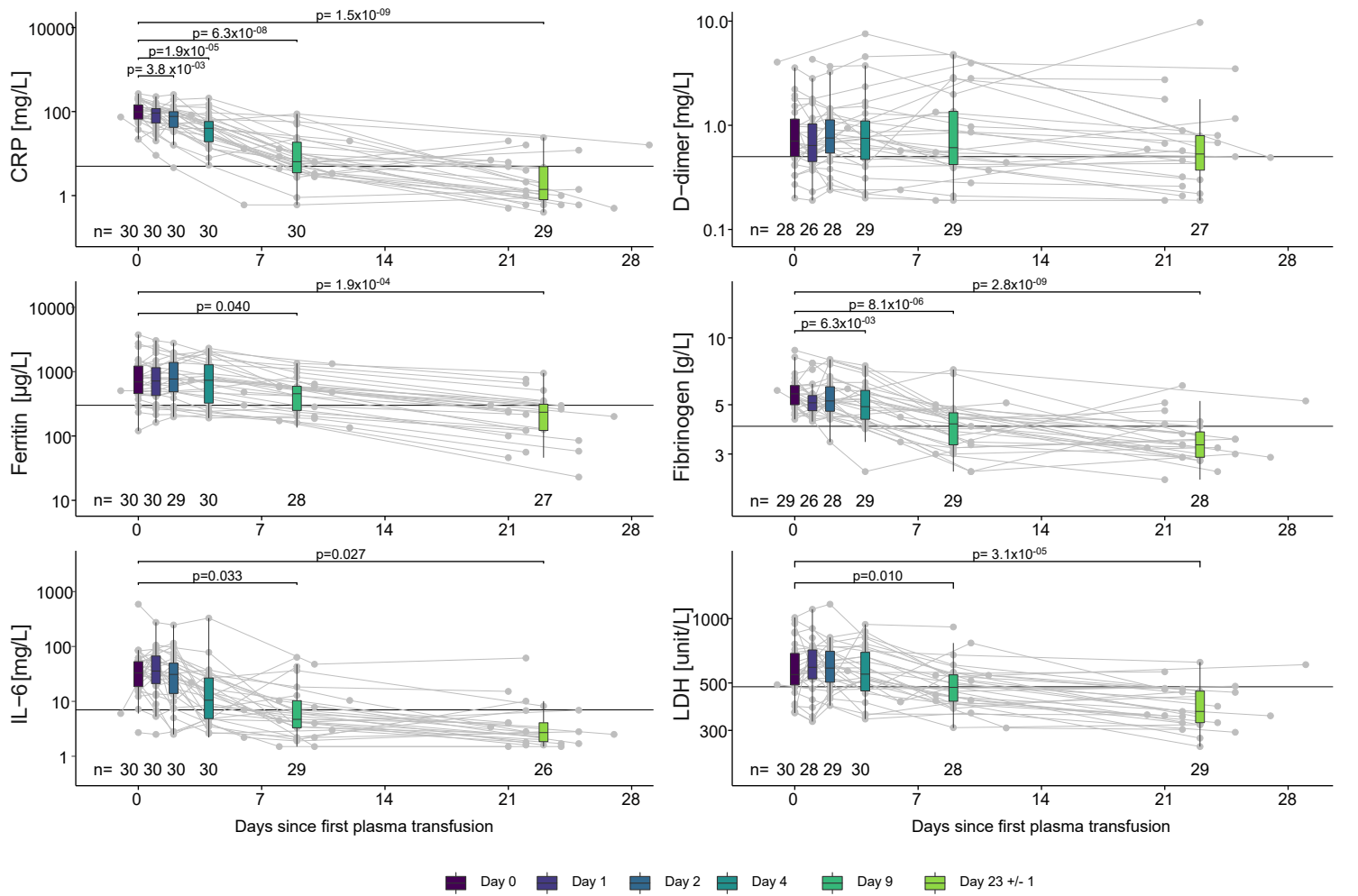


Figure S2

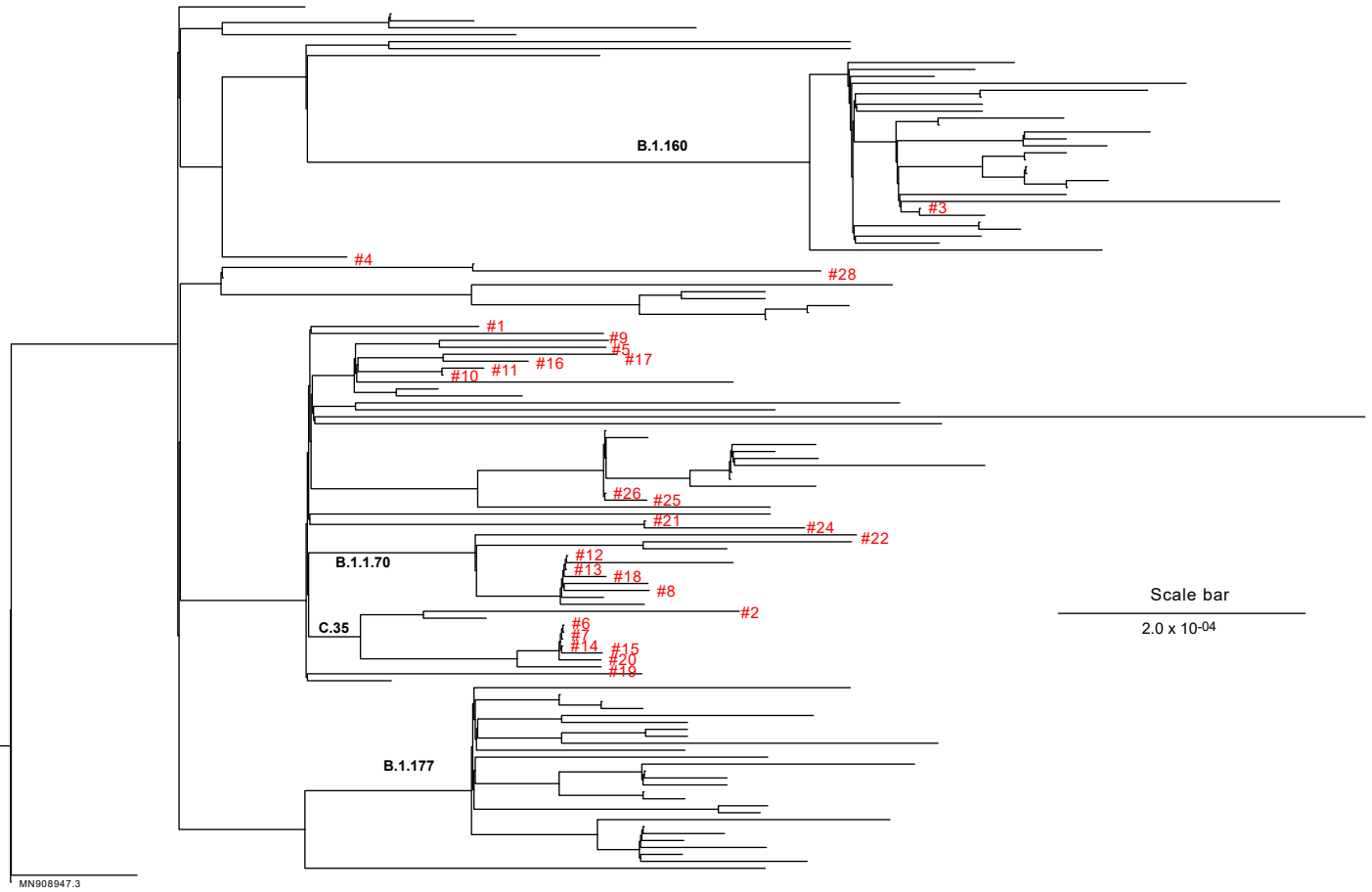


Figure S3

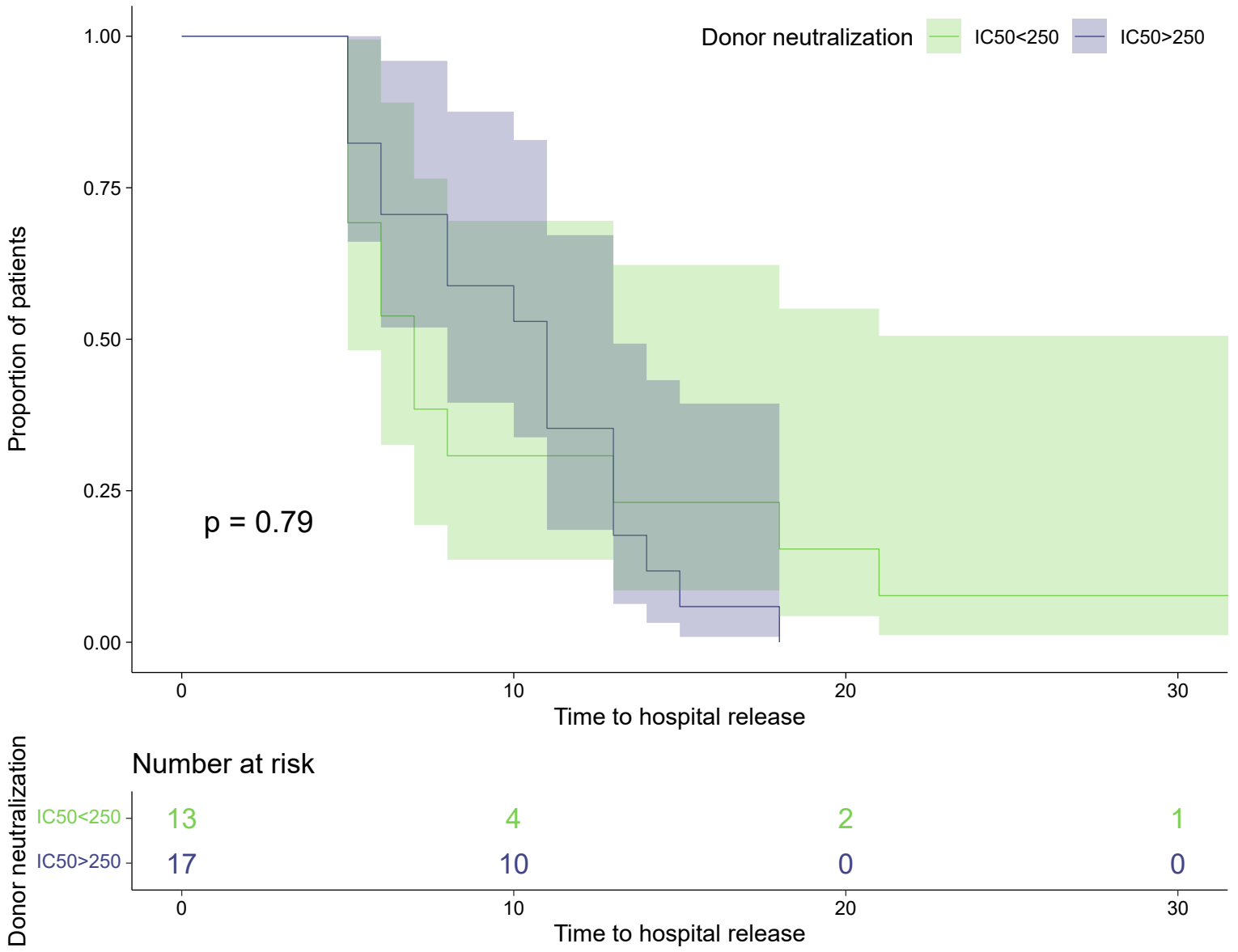


Figure S4

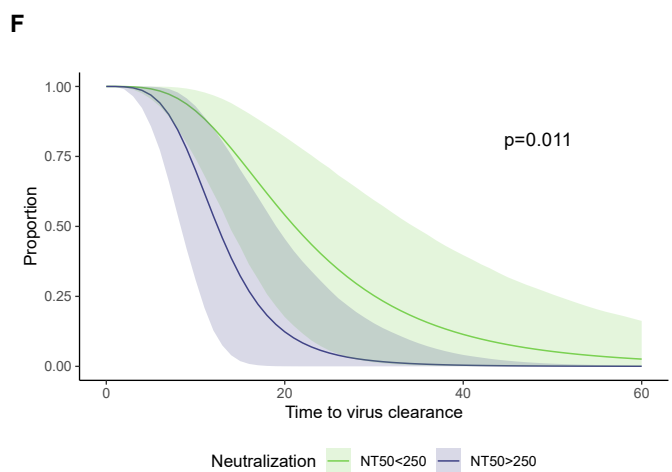
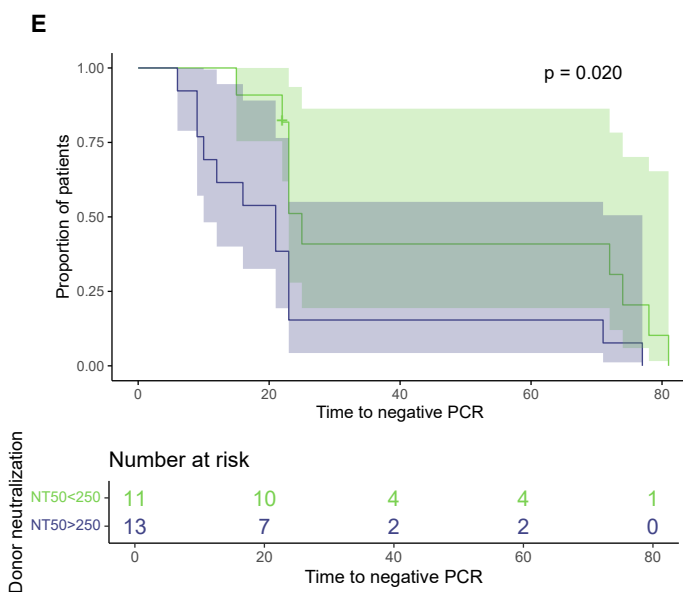
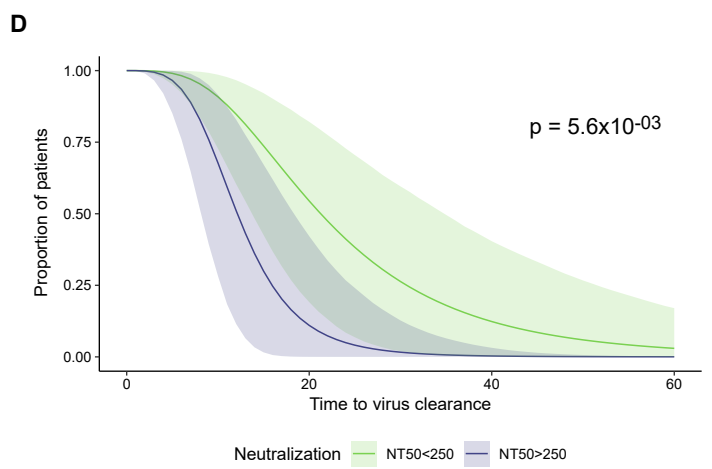
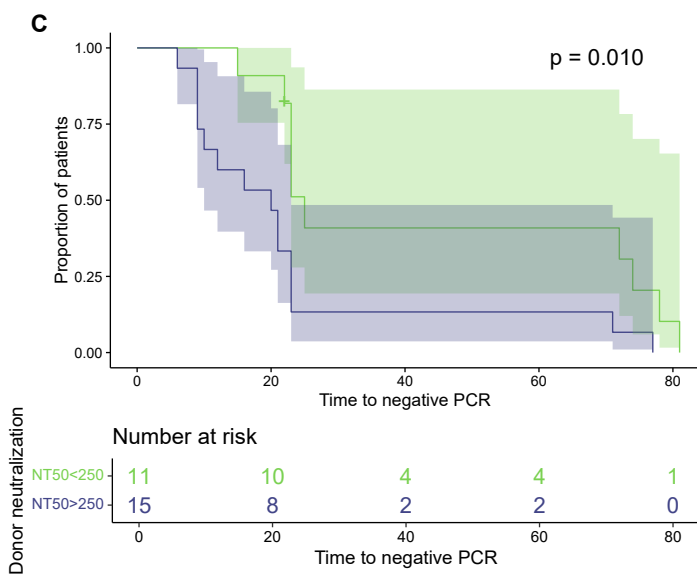
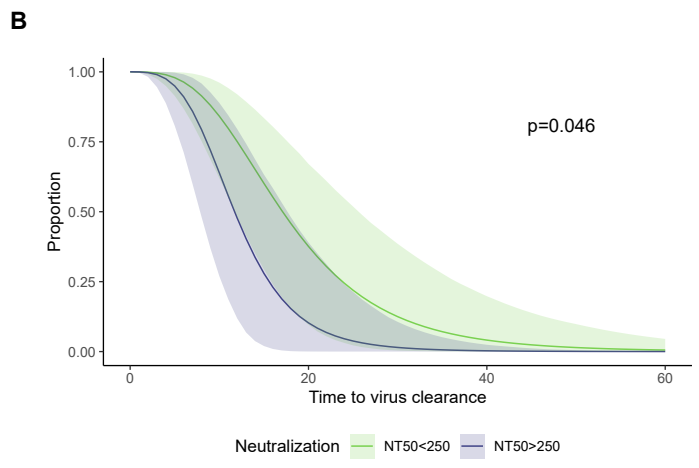
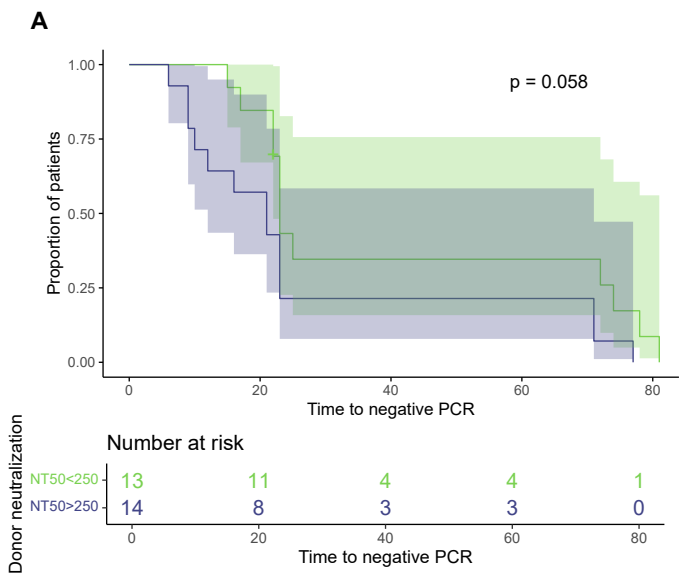


Figure S5

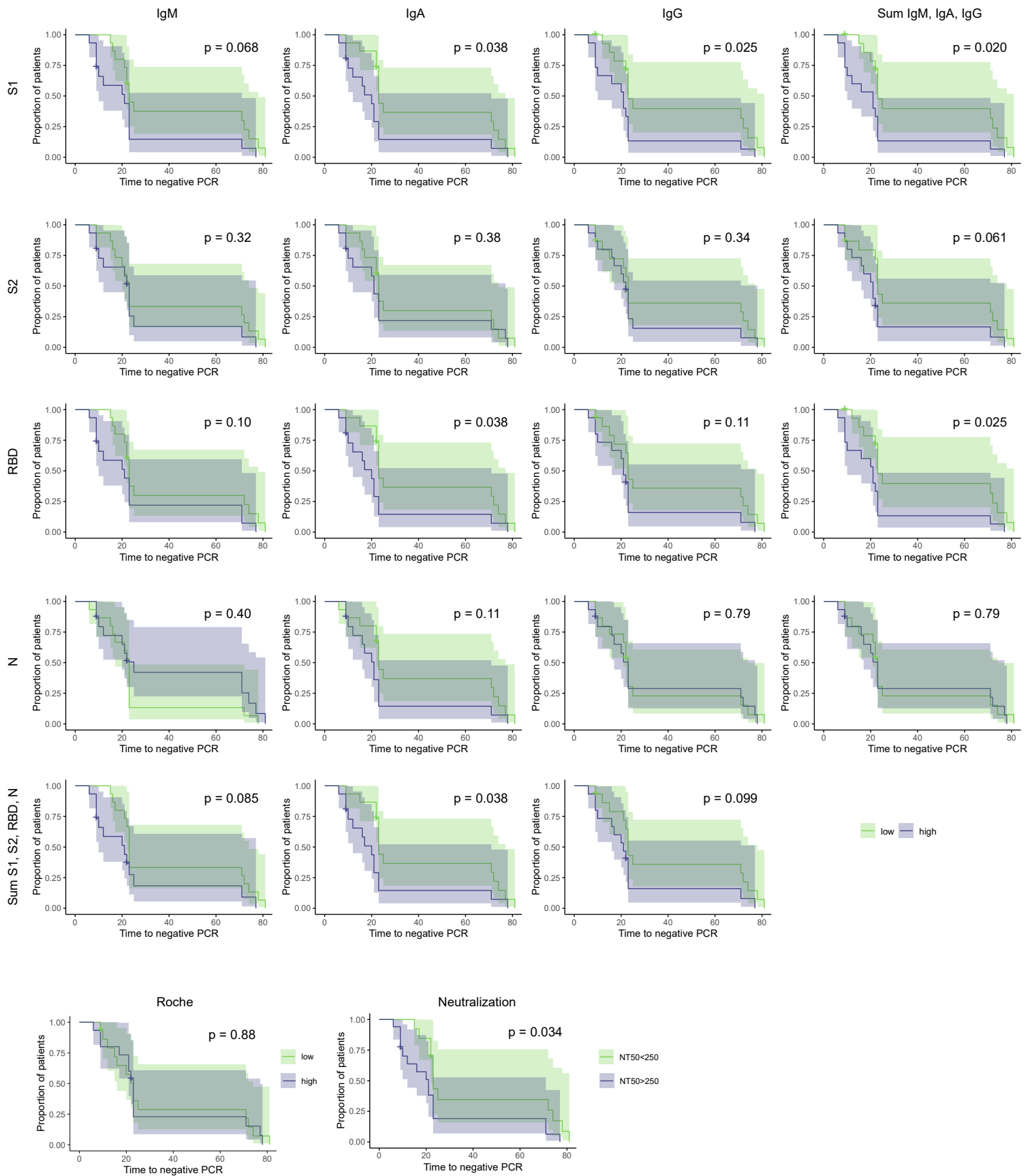


Figure S6

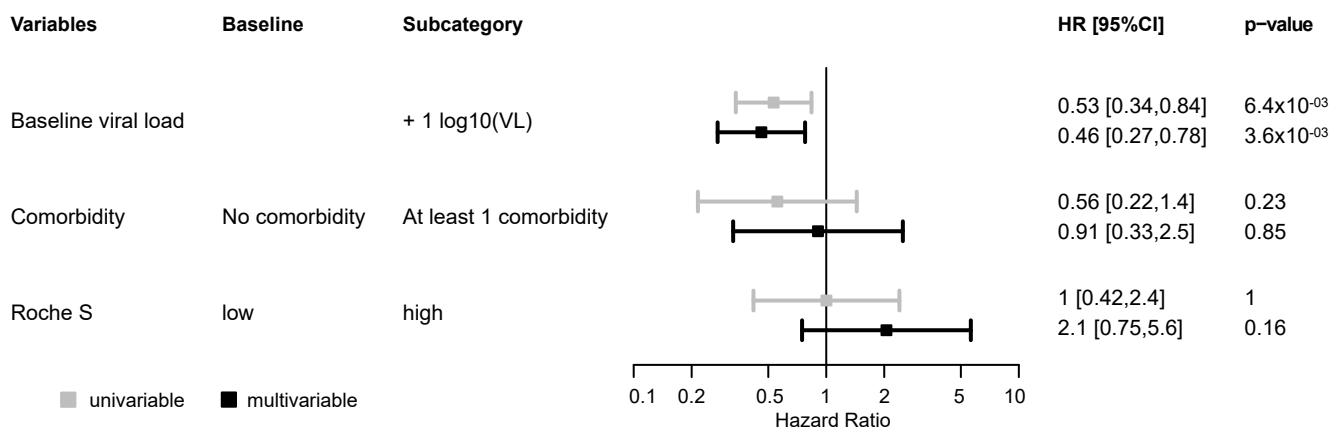


Figure S7

Trial participants excluding patients on remdesivir treatment (N=26)

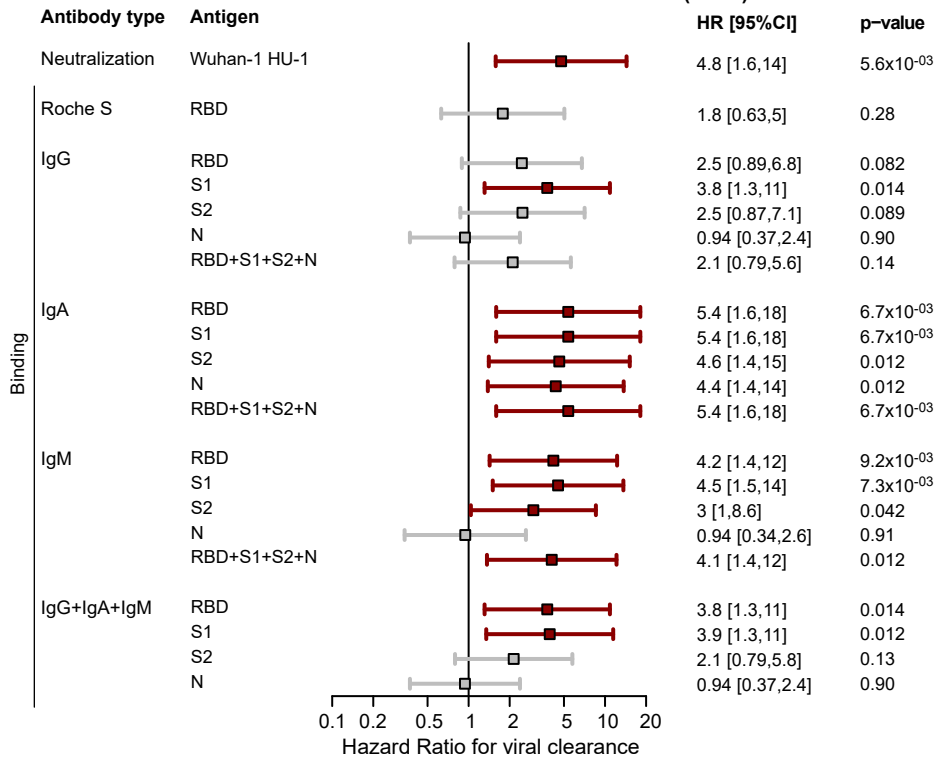
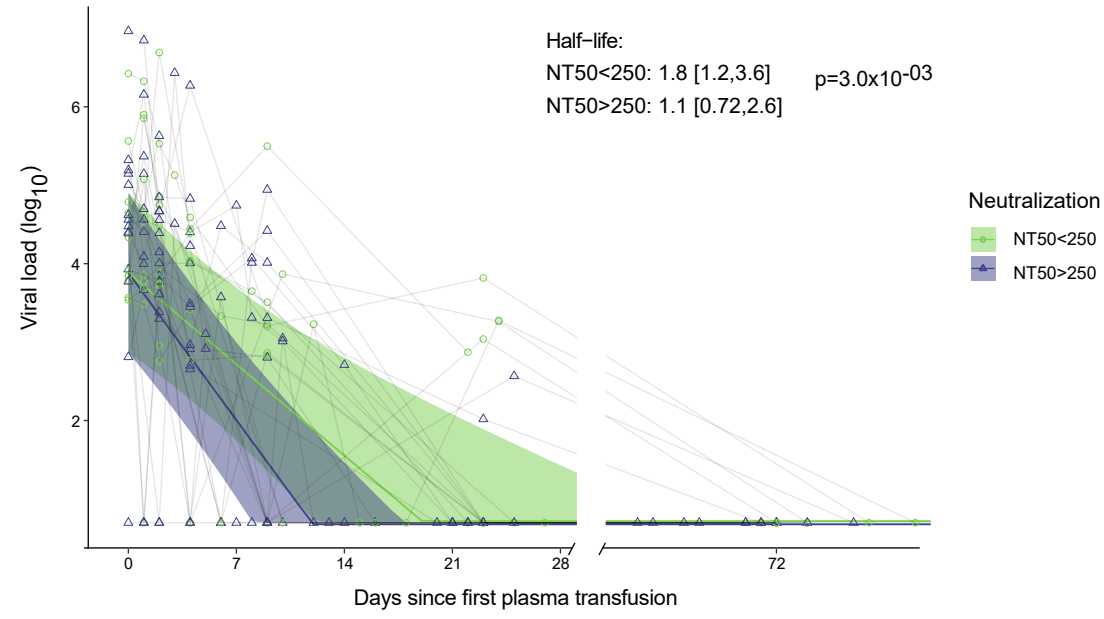


Figure S8

A



B

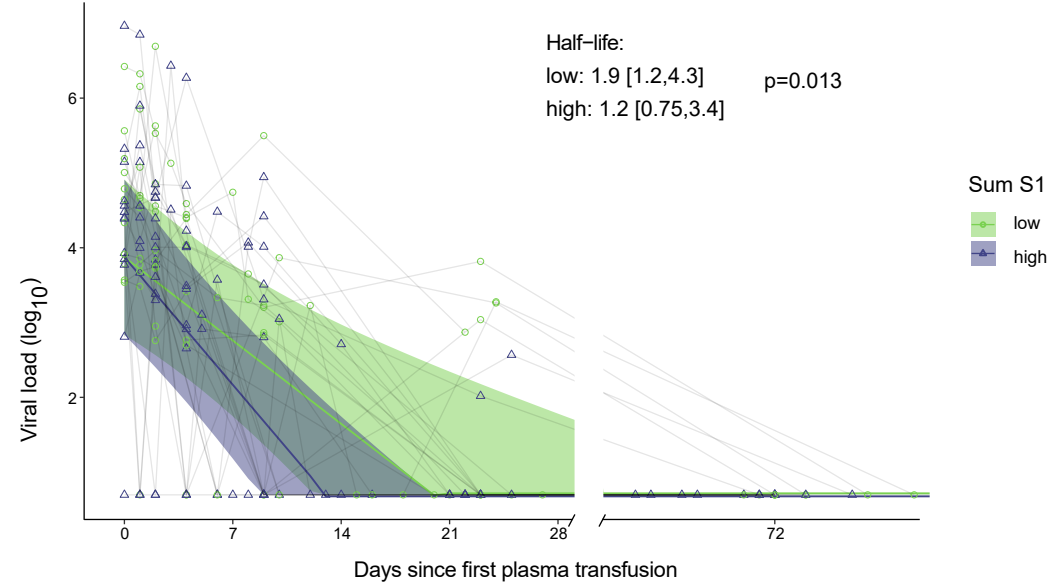


Figure S10

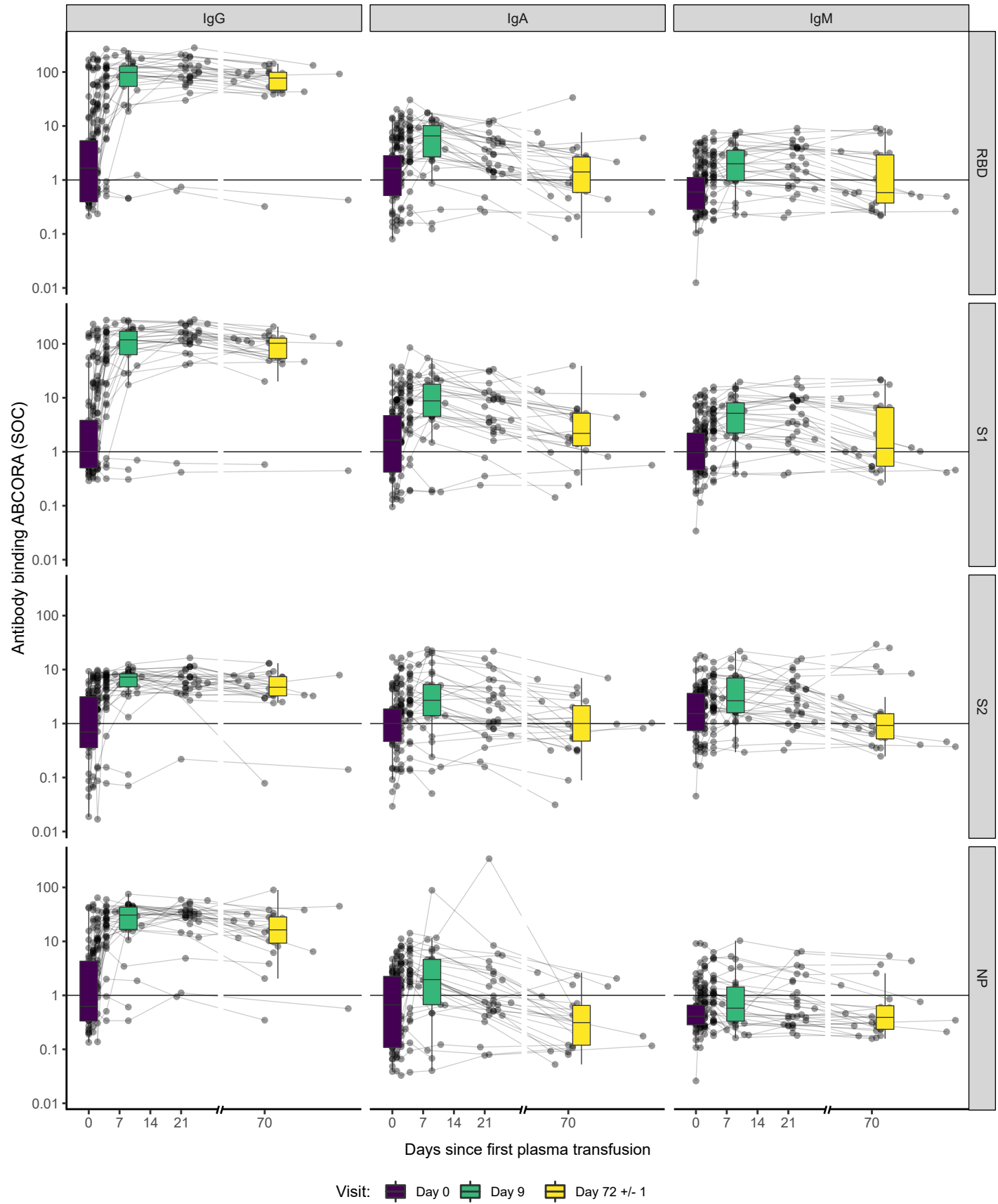


Figure S11

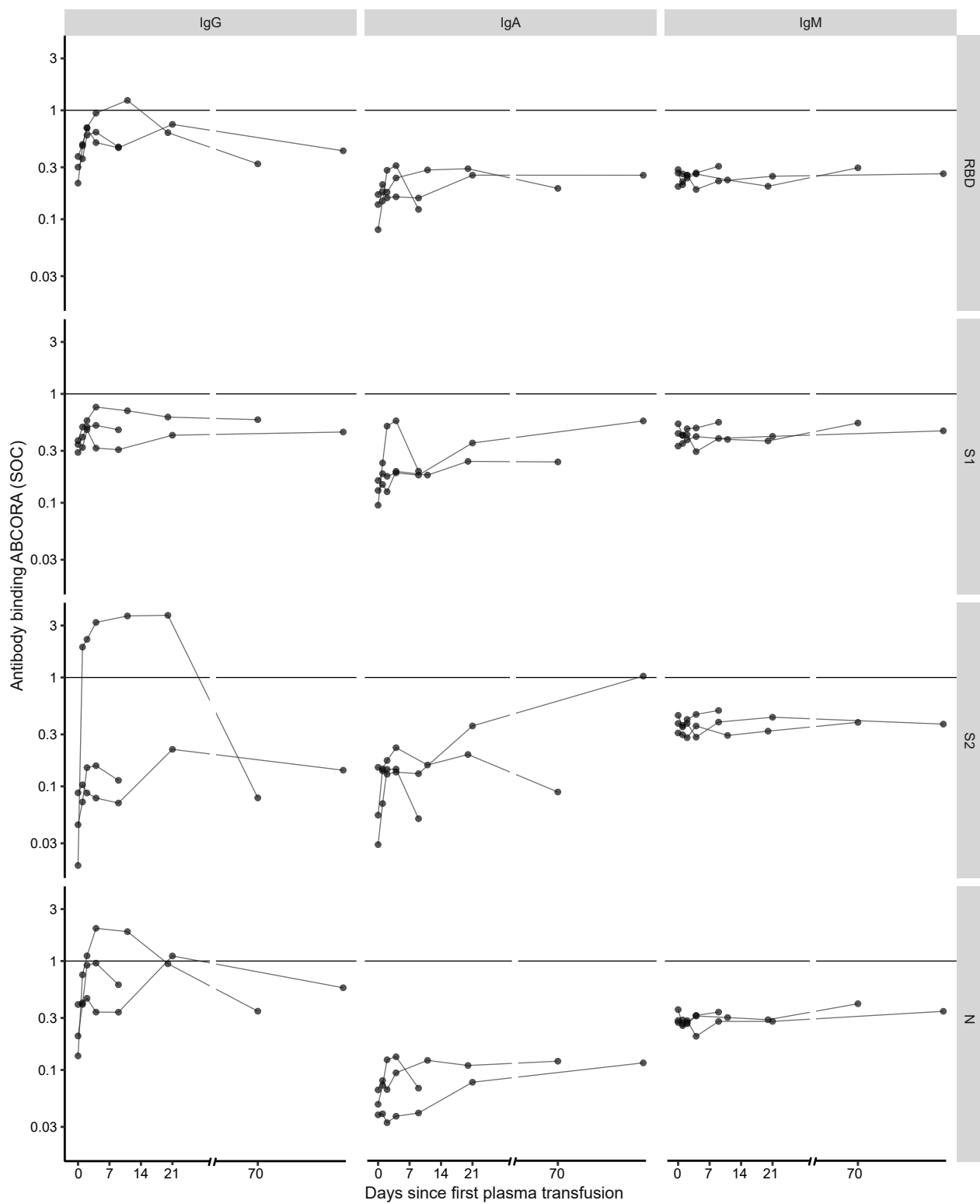
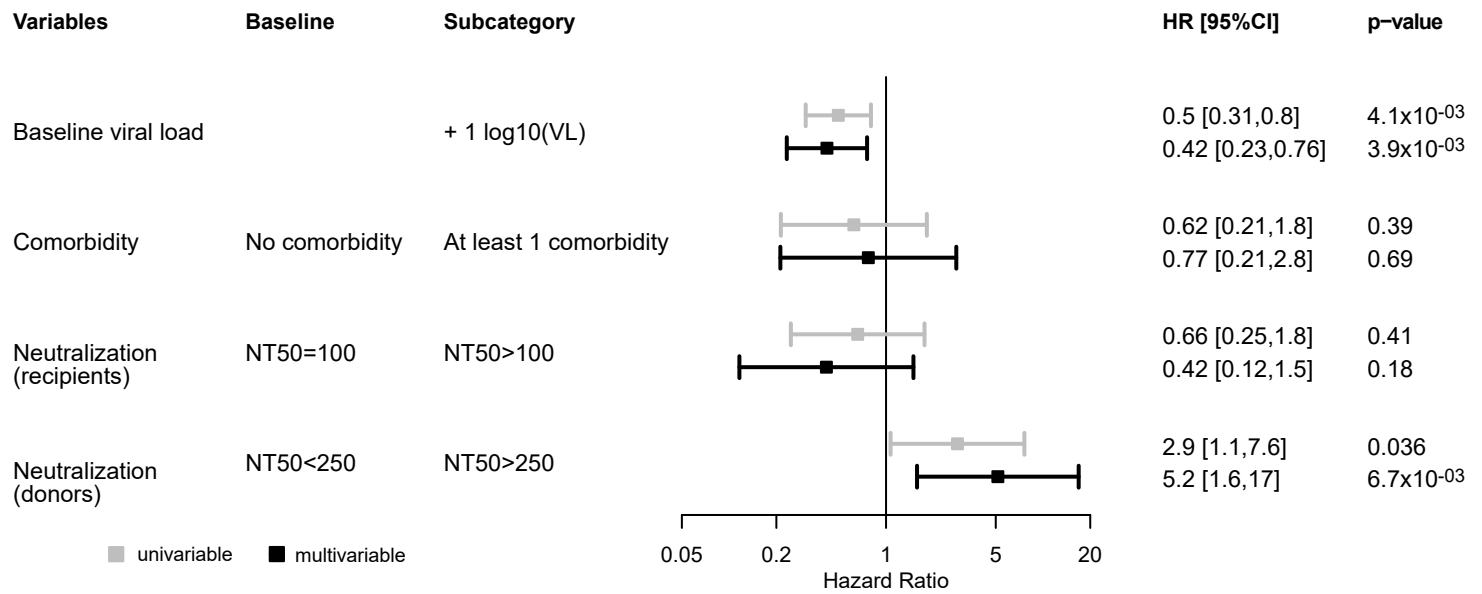


Figure S12

A



B

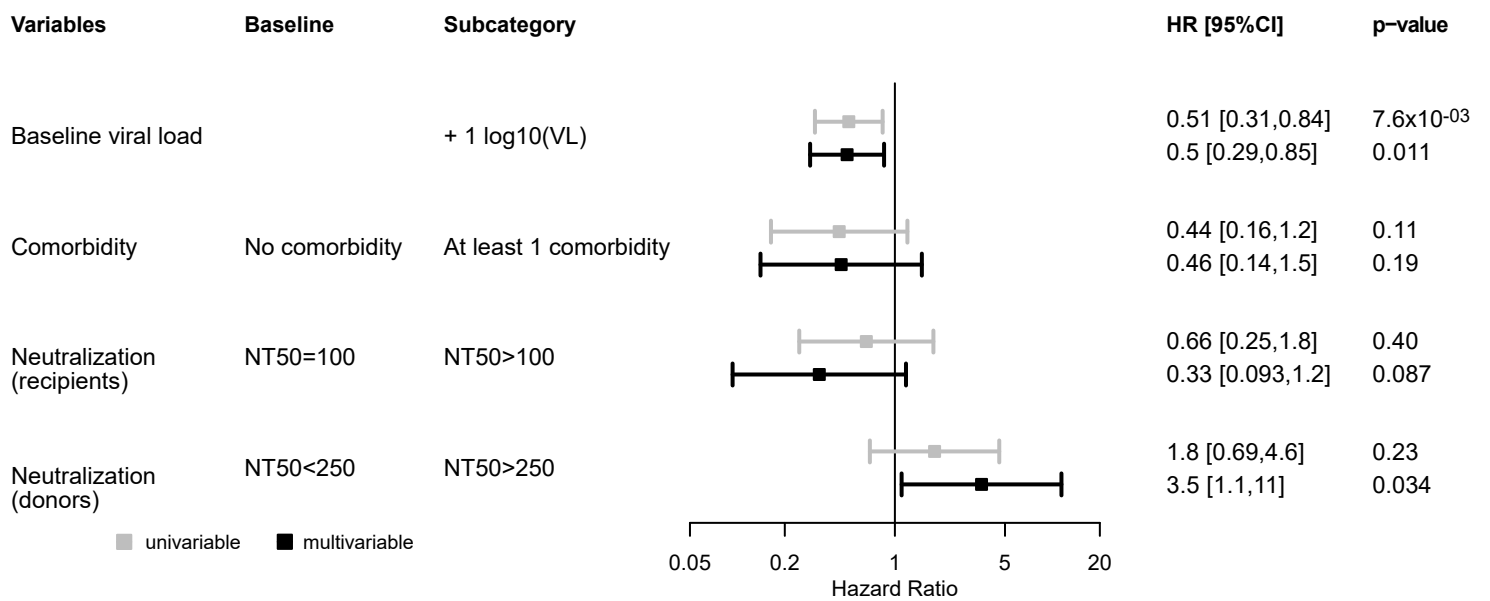
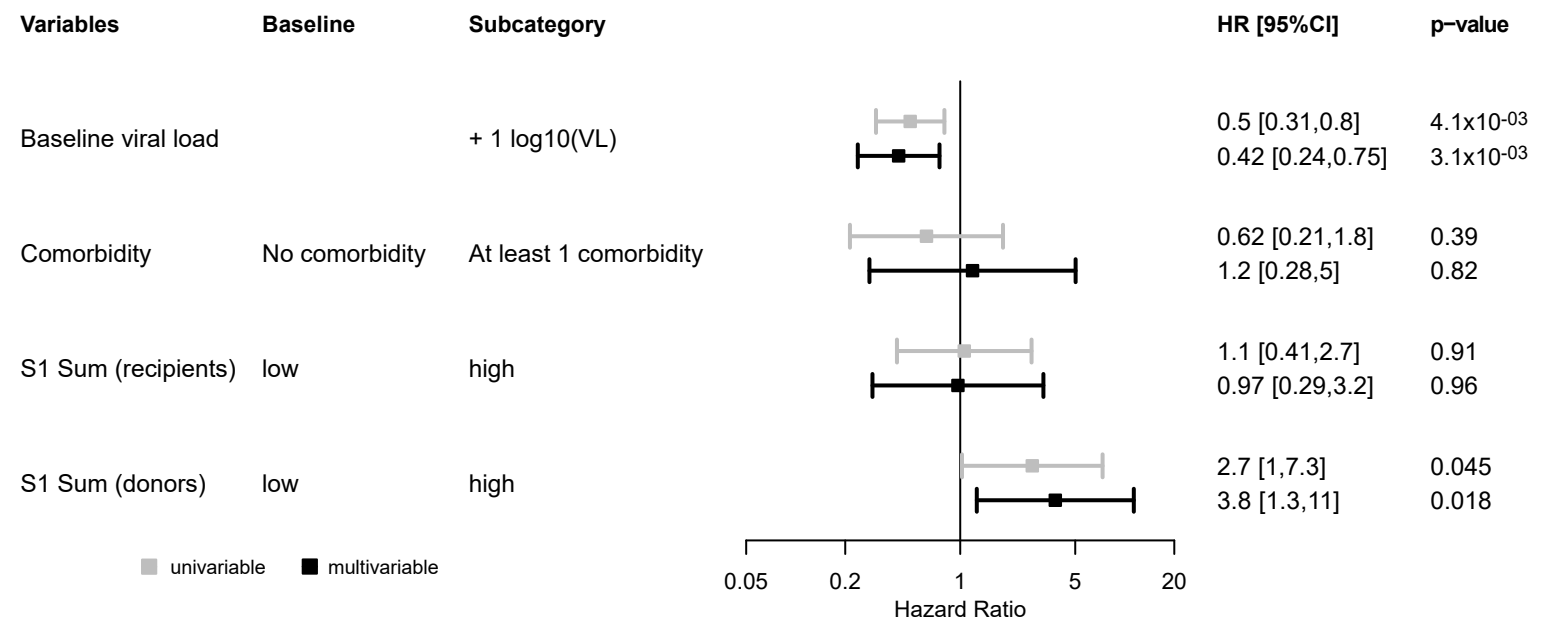


Figure S13

A



B

