

**Serum levels of specialised pro-resolving molecule pathways are greatly increased in SARS-CoV-2 patients and correlate with markers of the adaptive immune response.**

James Turnbull<sup>1,2,3</sup>, Rakesh Jha<sup>1,2</sup>, Catherine A. Ortori<sup>2</sup>, Eleanor Lunt<sup>4</sup>, Patrick J. Tighe<sup>3</sup>, William L. Irving<sup>1,3</sup>, Sameer A. Gohir<sup>1,6</sup>, Dong-Hyun Kim<sup>2</sup>, Ana M. Valdes<sup>1,5,6</sup>, Alexander W. Tarr<sup>1,3</sup>, David A. Barrett<sup>1,2</sup>, Victoria Chapman<sup>1,3,5</sup>.

<sup>1</sup> NIHR Nottingham Biomedical Research Centre, Nottingham University Hospitals NHS Trust, Nottingham, UK

<sup>2</sup> Centre for Analytical Bioscience, Advanced Materials and Healthcare Technologies Division, School of Pharmacy, University of Nottingham, Nottingham, UK

<sup>3</sup> School of Life Sciences, Faculty of Medicine and Health Sciences, The University of Nottingham, Nottingham, UK

<sup>4</sup> Department of Health Care for Older People (HCOP), Queen's Medical Centre, Nottingham University Hospitals NHS Trust, Derby Road, Nottingham, Nottinghamshire NG7 2UH, UK

<sup>5</sup> Pain Centre Versus Arthritis, University of Nottingham, Nottingham, UK

<sup>6</sup> Academic Rheumatology, University of Nottingham, Nottingham, UK

**Supplementary Information**

**Supplementary Methods**

**LC-MS/MS lipidomic profiling**

Samples were stored at -80°C before analysis and thawed on ice prior to extraction. 400 µL of calibration standards, QC samples, and study samples

(available volumes of study samples were measured and recorded if less than 400  $\mu\text{L}$  for post analysis calculations) were spiked with 40  $\mu\text{L}$  of an internal standard solution containing: AA-d8 (1.7  $\mu\text{M}$ ), PGD2-d4 (0.2  $\mu\text{M}$ ), and 15-HETE-d8 (1.3  $\mu\text{M}$ ), RvD2-d4 (0.2  $\mu\text{M}$ ), and AEA-d8 (0.8  $\mu\text{M}$ ). Bioactive lipids were isolated by solid phase extraction using a C18 cartridge.

The HPLC system used was ExionLC™ Series UHPLC (Applied Biosystem, Foster City, CA, USA). The HPLC Column used was Acquity UPLC BEH C18 1.7  $\mu\text{m}$  (150 x 2.1 mm) with guard column (Acquity UPLC BEH C18 1.7  $\mu\text{m}$ , VanGuard Pre-Column 3/Pk, 2.1 x 5 mm). Mobile phase A was 0.02% formic acid in 100% water; mobile phase B was formic acid in methanol/acetonitrile (1:4, v/v) with a flow rate of 0.3 mL/min.

The MS system used was an Applied Biosystem MDS SCIEX 6500 Q-Trap hybrid triple-quadrupole-linear ion trap mass spectrometer (Applied Biosystem, Foster City, CA, USA) equipped with an electrospray ionisation (ESI) interface.

Quantification of each analyte was calculated using a fully extracted calibration standard curve. Normalisation was performed against the aliquoted sample volume to produce final concentration of each individual lipid present in serum samples. Quantification was performed using MultiQuant V.3.0.3 software. Identification of each compound in plasma samples was confirmed by LC retention times, corresponding secondary product ion transition, and presence in a solution of disambiguated analytes. The peak area ratio of each analyte was used to calculate the molar concentration using the calibration standard curve.

Each measured lipid had its identity confirmed using the following criteria: (1) presence of a peak with S/N ratio of greater than 5, (2) presence of reference standard spiked QCs and calibration line, (3) matching retention time with

authentic reference standards, (4)  $\geq 10$  data points per peak, and (4) matching of at least 2 diagnostic fragment ions from a reference standard.

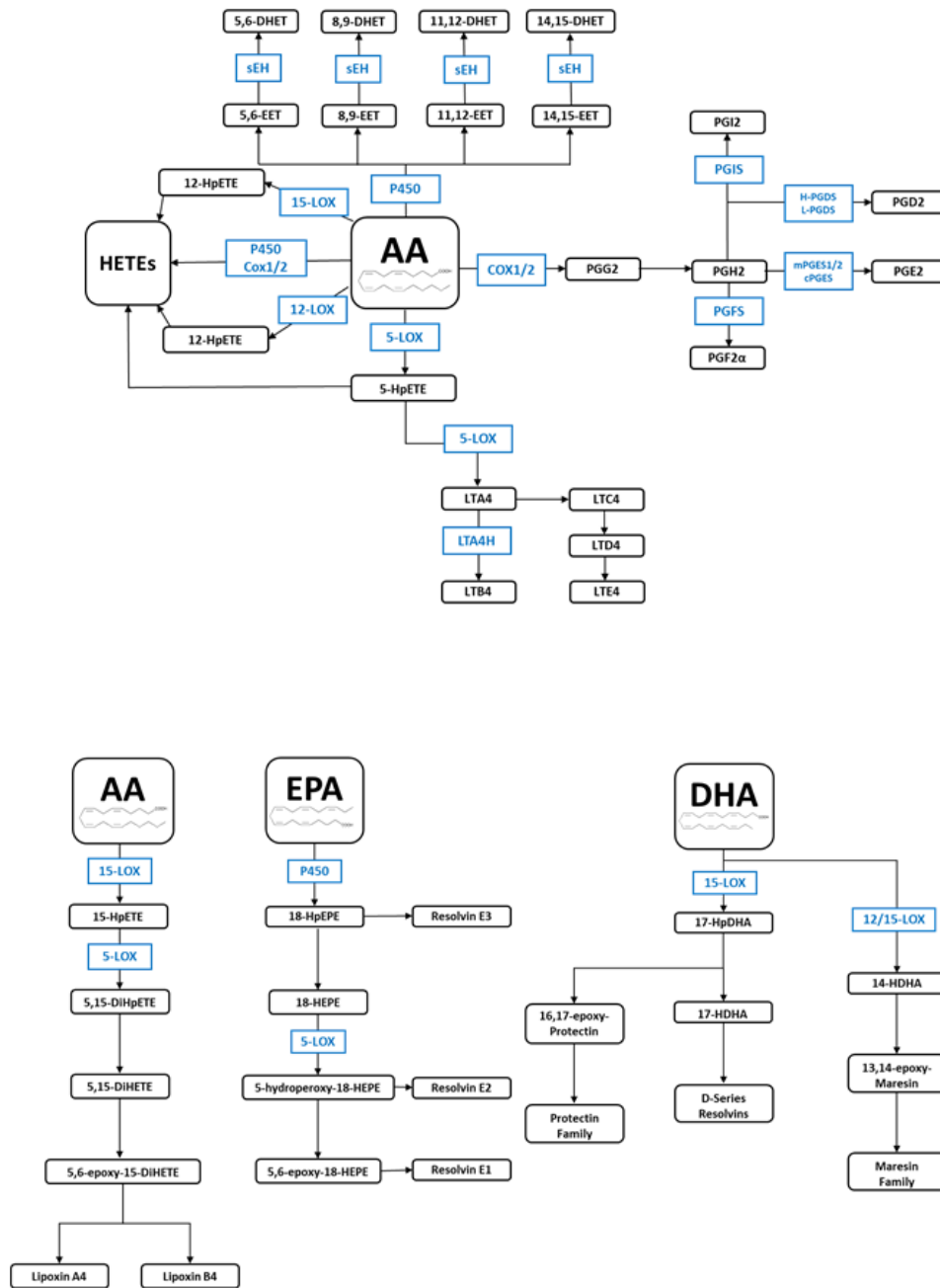
To assess any effect of the SARS-CoV-2 deactivation procedure on serum levels of lipid mediators, healthy serum from young volunteers (n=10) was used to replicate the sample storage and handling of the control and SARS-CoV-2 study samples. Serum was pooled to prepare n=12 identical QC samples. To replicate control group sample handling, n=6 of these samples were immediately stored at  $-80^{\circ}\text{C}$ . To mimic the sample handling for the SARS-CoV-2 samples, n=6 QC samples were stored at  $4^{\circ}\text{C}$  for 24 h and then at RT for 4 h with 1% triton-X 100. All samples were extracted and analysed by LC-MS/MS simultaneously and the levels of lipid mediators quantified and compared.

## **Supplementary Results**

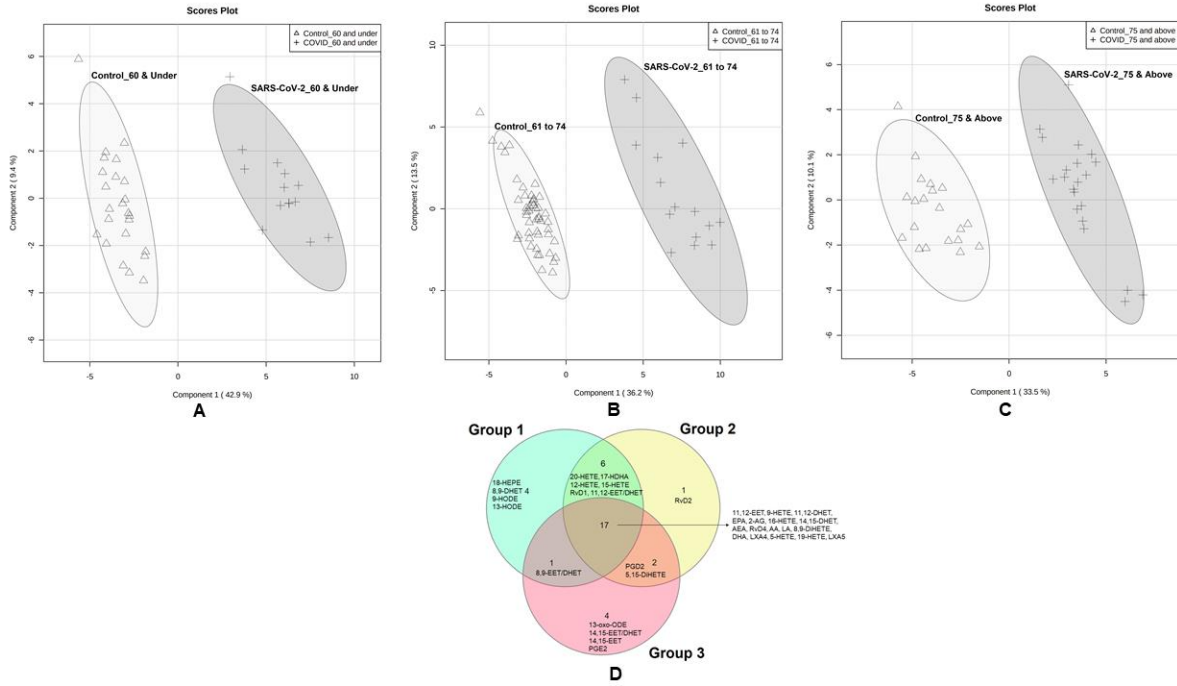
### **Associations between adaptive immune responses to SARS-COV-2 infection and serum levels of bioactive lipids**

Based on the ranges, patients were divided into three groups of anti-nucleocapsid response ( $<0.5$  (n=16), 0-5-2.5 (n=11) and  $>2.5$  (n=22) OD450) and levels of bioactive lipids between the groups compared. Serum levels of 14-HDHA, 11,12 EET and 8, 12, and 20-HETE were significantly higher in those samples with an anti-nucleocapsid response  $>2.5$  (Table 4). Serum levels of AA, 8-HETE, DHA, EPA, 14-HDHA and 18-HEPE were positively correlated with anti-nucleocapsid levels (Table 4).

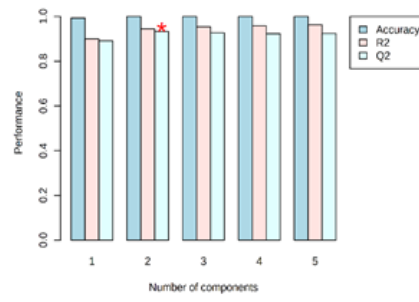
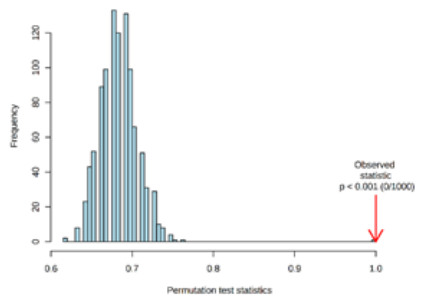
## Supplementary Figures



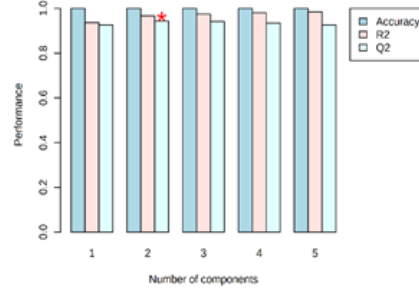
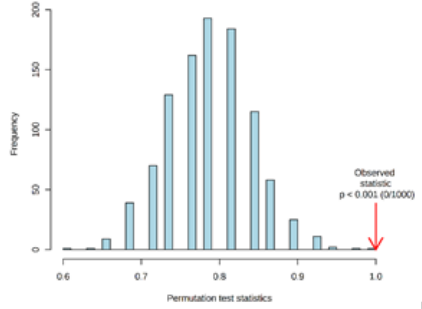
SI Figure 1. Biosynthetic pathways of metabolites from the arachidonic acid, eicosapentaenoic acid, and docosahexaenoic acid cascades.



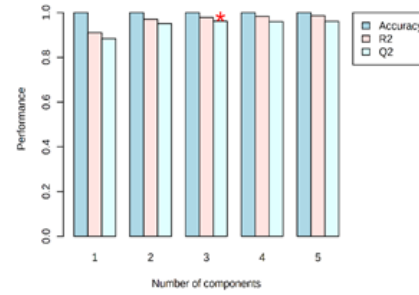
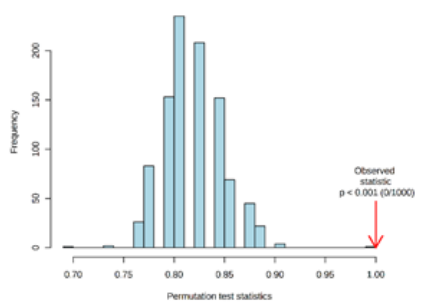
SI Figure 2. Partial least square discrimination analysis (PLS-DA) for the 44 serum lipids quantified in SARS-CoV-2 (n=50) and age and sex matched controls (n=94), stratified by age. A: Group 1 (60 and under) with  $R^2 = 0.966$ ,  $Q^2 = 0.941$  and Accuracy = 1.0; B: Group 2 (61 to 74) with  $R^2 = 0.986$ ,  $Q^2 = 0.969$  and Accuracy = 1.0; C: Group 3 (75 and above) with  $R^2 = 0.952$ ,  $Q^2 = 0.928$  and Accuracy = 1.0. D: Venn diagram showing the common versus unique lipid mediators obtained from PLS-DA analysis (VIP > 1) of the age stratified samples.



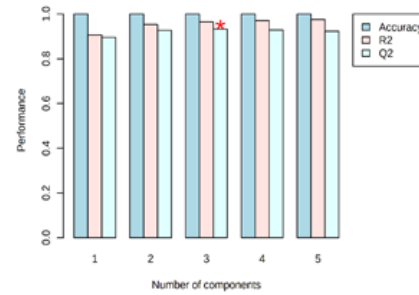
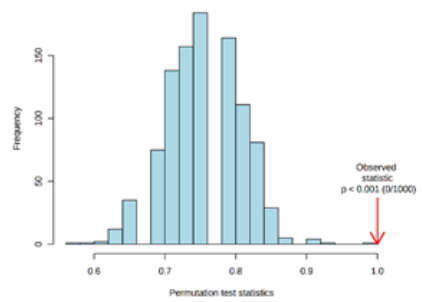
A. Control Vs SARS-CoV-2



B. Group 1

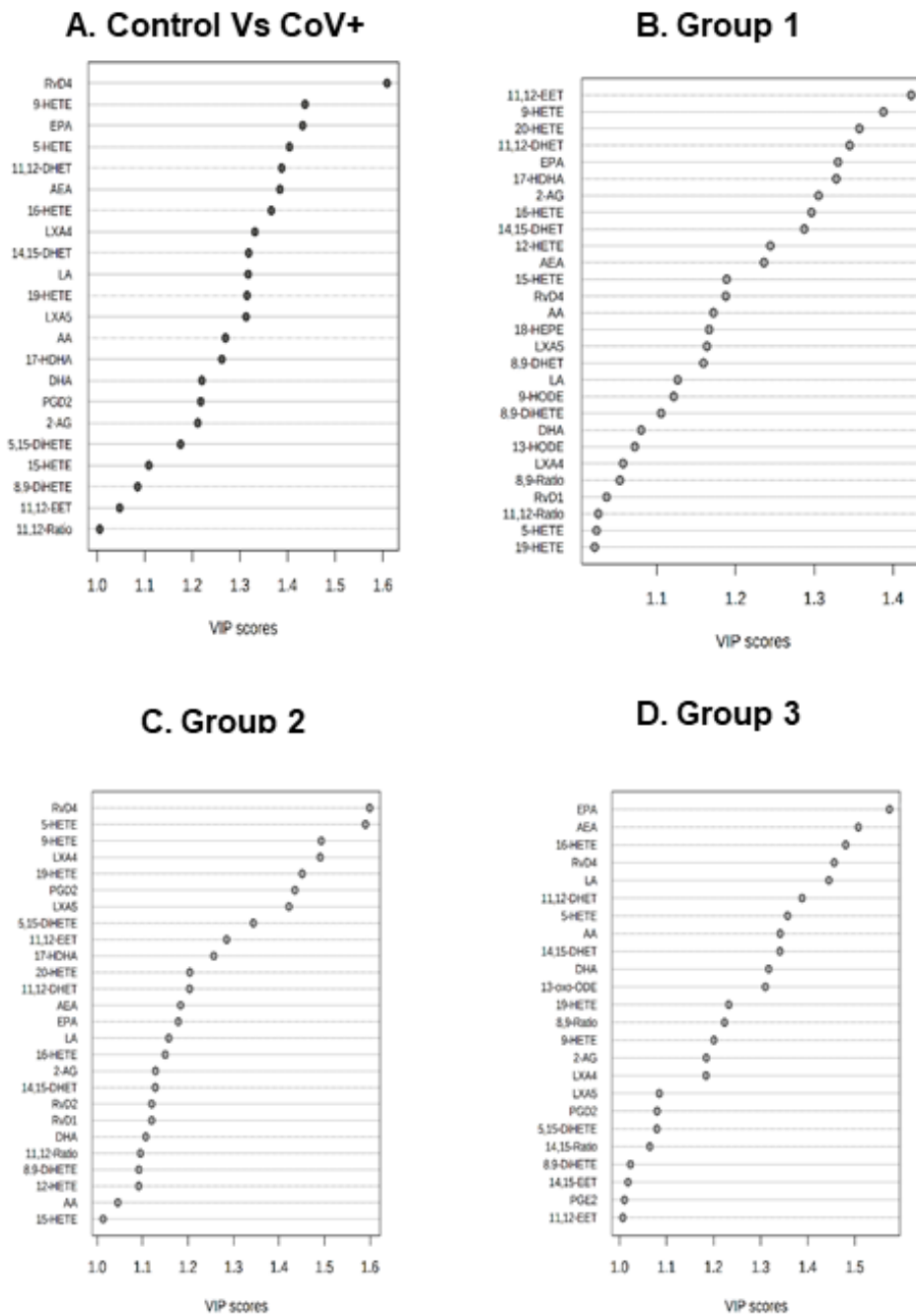


C. Group 2

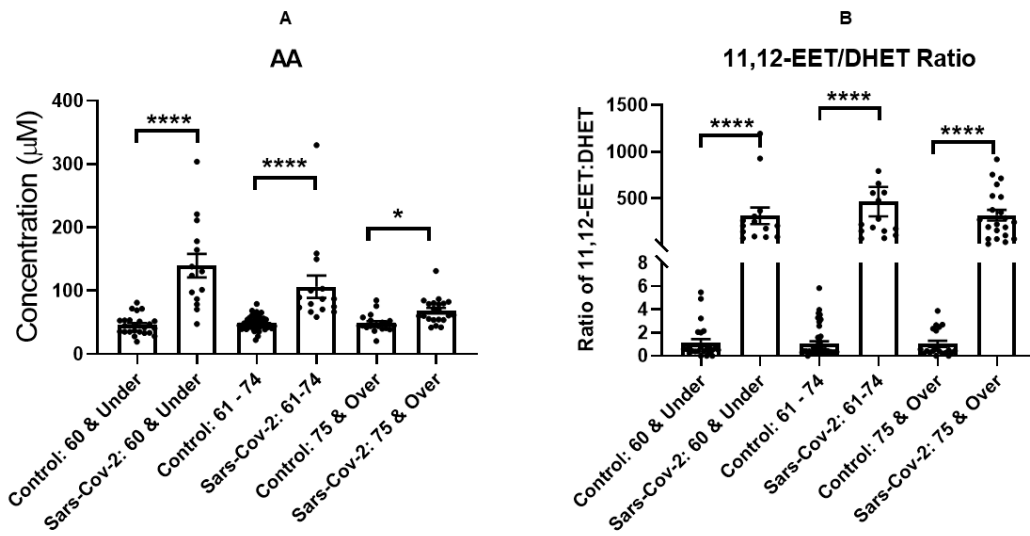


D. Group 3

SI Figure 3. Permutation tests and cross validation for PLS-DA model of A) Control Vs SARS-CoV-2, B) Group 1 (Control\_60 & Under Vs SARS-CoV-2\_60 & Under), C) Group 2 (Control\_61 to 74 Vs SARS-CoV-2\_61 to 74) and D) Group 3 (Control\_75 & Above Vs SARS-CoV-2\_75 & Above).

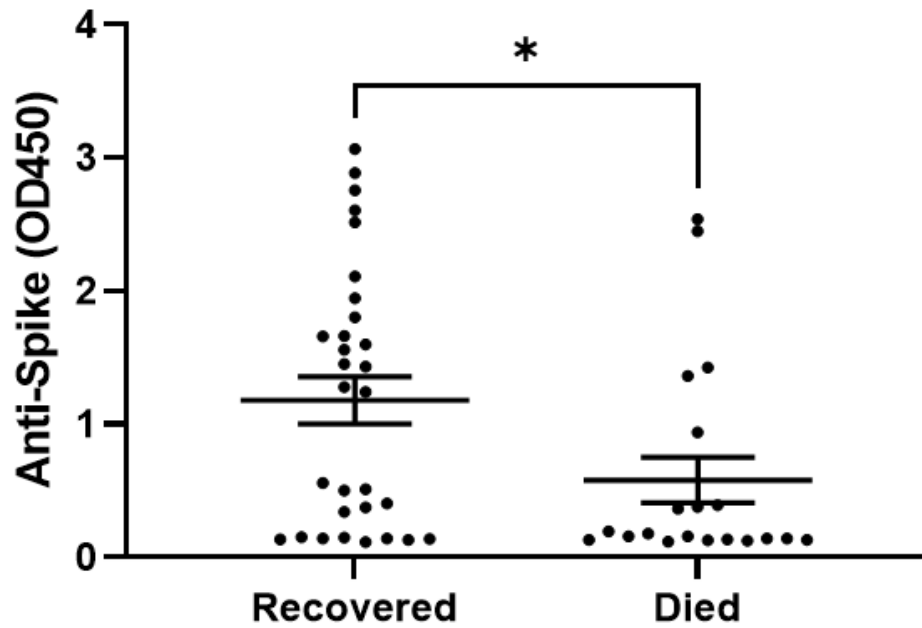


SI Figure 4. VIP graphs showing important discriminatory lipids (VIP>1) in A) Control Vs SARS-CoV-2, B) Group 1 (Control\_60 & Under Vs SARS-CoV-2\_60 & Under), C) Group 2 (Control\_61 to 74 Vs SARS-CoV-2\_61 to 74) and D) Group 3 (Control\_75 & Above Vs SARS-CoV-2\_75 & Above).



SI Figure 5. Serum concentrations of (A) AA (B) the ratio of 11,12-EET: DHET in SARS-CoV-2 (n=50) and age and sex matched controls (n=94) stratified by age group. Groups were assessed for normal distribution using D'Agostino & Pearson test. Significance was assessed using Kruskal-Wallis test correcting for multiple comparisons using Dunn's test. \*p=<0.05, \*\*p=<0.01, \*\*\*p=<0.001, \*\*\*\*p=<0.0001.





SI Figure 6. Levels of anti-spike antibody binding in SARS-CoV-2 patients stratified by clinical outcome, recovered (n=30) and died (n=20). Statistical analysis by Mann-Whitney test showed lower levels of anti-spike antibody binding in those patients who died (p=0.0133).

### Supplementary Tables

SI Table 1. List of key lipid markers involved in discriminatory profile of SARS-CoV-2 samples based on VIP scores (>1) along with false discovery rate (FDR) in age stratified groups.

Group 1			Group 2			Group 3		
Lipids	VIP	FDR	Lipids	VIP	FDR	Lipids	VIP	FDR
11,12-EET	1.42	8.5E-13	RvD4	1.60	4.0E-23	EPA	1.57	2.4E-11
9-HETE	1.38	1.3E-11	5-HETE	1.59	1.0E-22	AEA	1.51	7.8E-10
20-HETE	1.35	1.0E-10	9-HETE	1.49	2.7E-17	16-HETE	1.48	2.2E-09
11,12-DHET	1.34	1.9E-10	LXA4	1.49	2.7E-17	RvD4	1.46	5.5E-09
EPA	1.33	3.9E-10	19-HETE	1.45	1.0E-15	LA	1.45	7.4E-09

17-HDHA	1.32	3.9E-10	PGD2	1.43	3.5E-15	11,12-DHET	1.39	6.9E-08
2-AG	1.30	1.4E-09	LXA5	1.42	8.8E-15	5-HETE	1.36	1.9E-07
16-HETE	1.30	2.0E-09	5,15-DiHETE	1.34	2.2E-12	AA	1.34	2.6E-07
14,15-DHET	1.29	3.0E-09	11,12-EET	1.28	6.4E-11	14,15-DHET	1.34	2.6E-07
12-HETE	1.24	2.5E-08	17-HDHA	1.26	2.6E-10	DHA	1.32	5.2E-07
AEA	1.24	3.3E-08	20-HETE	1.20	2.8E-09	13-oXo-ODE	1.31	6.0E-07
15-HETE	1.19	2.2E-07	11,12-DHET	1.20	2.8E-09	19-HETE	1.23	5.5E-06
RvD4	1.19	2.2E-07	AEA	1.18	6.1E-09	8,9-RATIO	1.22	6.5E-06
AA	1.17	3.8E-07	EPA	1.18	7.1E-09	9-HETE	1.20	1.1E-05
18-HEPE	1.17	4.4E-07	LA	1.16	1.6E-08	2-AG	1.18	1.4E-05
LXA5	1.16	4.6E-07	16-HETE	1.15	2.0E-08	LXA4	1.18	1.4E-05
8,9-DHET	1.16	5.1E-07	2-AG	1.13	4.3E-08	LXA5	1.08	1.2E-04
LA	1.13	1.5E-06	14,15-DHET	1.13	4.3E-08	PGD2	1.08	1.2E-04
9-HODE	1.12	1.7E-06	RvD2	1.12	5.2E-08	5,15-DiHETE	1.08	1.2E-04
8,9-DiHETE	1.11	2.7E-06	RvD1	1.12	5.2E-08	14,15-Ratio	1.06	1.6E-04
DHA	1.08	5.6E-06	DHA	1.11	8.0E-08	8,9-DiHETE	1.02	3.3E-04
13-HODE	1.07	6.8E-06	11,12-Ratio	1.10	1.2E-07	14,15-EET	1.02	3.5E-04
LXA4	1.06	1.0E-05	8,9-DiHETE	1.09	1.3E-07	PGE2	1.01	3.8E-04
8,9-Ratio	1.05	1.1E-05	12-HETE	1.09	1.3E-07	11,12-EET	1.01	3.9E-04
RvD1	1.04	1.6E-05	AA	1.05	5.7E-07			
11,12-Ratio	1.03	2.1E-05	15-HETE	1.01	1.5E-06			
5-HETE	1.02	2.2E-05						
19-HETE	1.02	2.2E-05						

SI Table 2. Clinical characteristics of SARS-CoV-2 and control groups.

<b>Characteristics</b>	<b>Control</b>	<b>Sars-CoV-2</b>
Total	91	50
Sex (M/F)	30/61	28/22
Age (Mean, Range)	67 (45-85)	69.3 (35-91)
Days between diagnosis & sample collection (Mean, Range)	-	7 (0-21)
Recovered/Died	-	30/20
no-ICU/ICU	-	25/25
CRP (Mean, Range)	-	172.9 (11-489)
Anti-nucleocapsid (Mean, Range)	-	1.81 (0.12-3.1)
Anti-Spike (Mean, Range)	-	0.939 (0.115-3.067)

SI Table 3. Calculated concentrations of selected bioactive lipids quantified in SARS-CoV-2 (n=50) and age and sex matched controls (n=94), and stratified by age group.

Lipid		Healthy – Under 30	Control – all groups	Control – 60 & Under	Control – 61-74	Control – 75 & Over	Sars-COV-2 – all groups	Sars-COV-2 – 60 & Under	Sars-COV-2 – 61-74	Sars-COV-2 – 75 & Over
DHA	µM ± SD	259 ± 202.9	36.96 ± 17.63	29.36 ± 14.3	37.27 ± 15.06	45.37 ± 22.35	39.67 ± 27.01	53.23 ± 53.23	44.74 ± 31.39	27.02 ± 8.6
EPA		42.38 ± 54.33	37.26 ± 4.72	38 ± 5.28	36.48 ± 4.28	38.24 ± 4.69	26.13 ± 21.59	38.13 ± 38.13	31.15 ± 24.24	14.55 ± 7.91
AA		127.3 ± 41.64	47.98 ± 12.75	45.69 ± 15.3	48.88 ± 10.73	48.57 ± 13.53	99.61 ± 60.21	139.5 ± 139.5	106.3 ± 65.98	68.25 ± 19.79
LA		18.29 ± 8.64	307.8 ± 109.7	271.9 ± 110	305.2 ± 102.4	357 ± 107.5	213.8 ± 108.4	314.1 ± 314.1	197.2 ± 81.98	158.8 ± 46.51
17-HDHA	nM ± SD	1.92 ± 0.14	1.88 ± 1.46	1.33 ± 0.83	1.82 ± 0.98	2.69 ± 2.37	88.61 ± 107.3	124.4 ± 124.4	120.9 ± 143.6	41.66 ± 57.29
14-HDHA		2.23 ± 1.4	55.53 ± 54.4	35.6 ± 28.3	52.48 ± 34.86	86.77 ± 90.99	93.11 ± 69.82	95.91 ± 95.91	99.29 ± 66.16	86.83 ± 78.72
18-HEPE		0.25 ± 0.15	0.49 ± 0.32	0.34 ± 0.18	0.5 ± 0.28	0.67 ± 0.44	10.27 ± 14.16	14.52 ± 14.52	16.07 ± 19.94	3.29 ± 3.45
RvD4		Not Detected	Not Detected	Not Detected	Not Detected	Not Detected	4.11 ± 3.94	4.9 ± 4.9	5.26 ± 5.08	2.76 ± 3.36
Maresin 2		Not Detected	0.03 ± 0.01	0.02 ± 0.02	0.03 ± 0.01	0.03 ± 0.02	0.42 ± 0.48	0.5 ± 0.5	0.6 ± 0.63	0.25 ± 0.38
5,6-EET		2.63 ± 1.58	0.24 ± 0.38	0.32 ± 0.59	0.22 ± 0.27	0.21 ± 0.24	0.30 ± 0.29	0.41 ± 0.41	0.36 ± 0.43	0.19 ± 0.07
5,6-DHET		0.19 ± 0.06	0.38 ± 0.21	0.42 ± 0.31	0.38 ± 0.16	0.32 ± 0.14	2.35 ± 1.73	1.86 ± 1.86	1.79 ± 0.9	3.09 ± 2.14
5,6-Ratio		13.99 ± 8	0.60 ± 0.72	0.68 ± 0.92	0.52 ± 0.56	0.67 ± 0.77	0.21 ± 0.24	0.34 ± 0.34	0.25 ± 0.21	0.1 ± 0.09
8,9-EET		0.26 ± 0.09	0.21 ± 0.21	0.23 ± 0.29	0.19 ± 0.18	0.21 ± 0.18	0.74 ± 0.88	0.94 ± 0.94	0.89 ± 1.2	0.51 ± 0.37
8,9-DHET		0.19 ± 0.02	0.22 ± 0.07	0.22 ± 0.09	0.23 ± 0.07	0.19 ± 0.06	0.47 ± 0.32	0.36 ± 0.36	0.41 ± 0.37	0.58 ± 0.3
8,9-Ratio		1.3 ± 0.37	0.97 ± 0.86	0.97 ± 0.7	0.88 ± 0.82	1.18 ± 1.07	2.63 ± 4.09	3.45 ± 3.45	3.77 ± 5.77	1.3 ± 1.45
11,12-EET		6.41 ± 4.52	0.56 ± 0.77	0.66 ± 1.13	0.54 ± 0.61	0.49 ± 0.53	160.95 ± 122.47	139.7 ± 139.7	160.4 ± 120.9	175.5 ± 148.7
11,12-DHET		0.45 ± 0.12	0.53 ± 0.16	0.51 ± 0.15	0.55 ± 0.17	0.51 ± 0.14	0.60 ± 0.32	0.63 ± 0.63	0.51 ± 0.28	0.65 ± 0.36
11,12-Ratio		14.12 ± 9.81	1.09 ± 1.31	1.15 ± 1.45	1.08 ± 1.31	1.05 ± 1.14	363.01 ± 407.70	314.6 ± 314.6	466.8 ± 591.4	321.2 ± 257.5

14,15-EET		2.14 ± 1.03	0.27 ± 0.35	0.33 ± 0.53	0.26 ± 0.26	0.24 ± 0.22	0.43 ± 0.44	0.65 ± 0.65	0.49 ± 0.58	0.26 ± 0.11
14,15-DHET		0.33 ± 0.1	0.43 ± 0.14	0.4 ± 0.14	0.45 ± 0.14	0.41 ± 0.12	0.52 ± 0.27	0.5 ± 0.5	0.5 ± 0.33	0.55 ± 0.27
14,15-Ratio		6.5 ± 2.9	0.68 ± 0.74	0.74 ± 0.82	0.66 ± 0.74	0.65 ± 0.64	0.90 ± 0.73	1.37 ± 1.37	0.99 ± 0.66	0.52 ± 0.27

SI Table 4. Adjusted P values for Dunn’s multiple comparison test comparing lipid levels between age groups in control and SARS-CoV-2 cohorts.

Lipid	Control: 60 & Under vs. Control: 61 - 74	Control: 60 & Under vs. Control: 75 & Over	Control: 61 - 74 vs. Control: 75 & Over	Sars-COV-2: 60 & Under vs. Sars-COV-2: 61-74	Sars-COV-2: 60 & Under vs. Sars-COV-2: 75 & Over	Sars-COV-2: 61-74 vs. Sars-COV-2: 75 & Over	Control: 60 & Under vs. Sars-COV-2: 60 & Under	Control: 61 - 74 vs. Sars-COV-2: 61-74	Control: 75 & Over vs. Sars-COV-2: 75 & Over
5,6-EET	ns	ns	ns	ns	ns	ns	0.0266	ns	ns
5,6-DHET	ns	ns	ns	ns	ns	ns	0.0002	<0.0001	<0.0001
5,6-Ratio	ns	ns	ns	ns	ns	ns	ns	ns	0.0007
8,9-EET	ns	ns	ns	ns	ns	ns	0.0027	0.0027	0.0048
8,9-DHET	ns	ns	ns	ns	ns	ns	ns	ns	<0.0001
8,9-Ratio	ns	ns	ns	ns	ns	ns	ns	0.1597	ns
11,12-EET	ns	ns	ns	ns	ns	ns	<0.0001	<0.0001	<0.0001
11,12-DHET	ns	ns	ns	ns	ns	ns	ns	ns	ns
11,12-Ratio	ns	ns	ns	ns	ns	ns	<0.0001	<0.0001	<0.0001
14,15-EET	ns	ns	ns	ns	ns	ns	0.0145	0.1221	ns
14,15-DHET	ns	ns	ns	ns	ns	ns	ns	ns	ns
14,15-Ratio	ns	ns	ns	ns	ns	ns	ns	0.0456	ns
EPA	ns	ns	0.0071	ns	ns	ns	ns	ns	<0.0001
DHA	ns	ns	0.0336	ns	ns	0.011	0.0298	ns	0.0116
17-HDHA	ns	ns	ns	ns	ns	ns	<0.0001	<0.0001	0.0004
14-HDHA	ns	ns	ns	ns	ns	ns	0.0029	ns	ns
18-HEPE	ns	ns	ns	ns	ns	ns	<0.0001	<0.0001	0.0132

Maresin 2	ns	ns	ns	ns	ns	ns	<0.0001	<0.0001	0.0045
RvD4	-	-	-	ns	ns	ns	-	-	-

SI Table 5. Concentrations of bioactive lipids quantified in Sars-CoV-2 (n=50) patients who recovered from infection (n=30) versus who died from infection (n=20). Statistical analysis by Mann-Whitney Test

Bioactive lipids	Mean Concentration $\pm$ SD						P Value
	Recovered (n=30)			Died (n=20)			
AA ( $\mu$ M)	100.65	$\pm$	53.49	98.05	$\pm$	69.04	0.304
LA ( $\mu$ M)	235.32	$\pm$	105.78	181.51	$\pm$	104.06	<b>0.007</b>
DHA ( $\mu$ M)	40.71	$\pm$	23.79	38.12	$\pm$	31.15	0.121
EPA ( $\mu$ M)	27.64	$\pm$	18.88	23.87	$\pm$	24.97	0.064
18-HEPE (nM)	10.88	$\pm$	13.70	9.35	$\pm$	14.78	0.183
17-HDHA (nM)	89.03	$\pm$	93.27	88.00	$\pm$	125.33	0.320
14-HDHA (nM)	102.49	$\pm$	71.29	79.05	$\pm$	65.09	0.218
Maresin 2 (nM)	0.39	$\pm$	0.37	0.48	$\pm$	0.63	0.801
RvD4 (nM)	4.23	$\pm$	3.50	3.92	$\pm$	4.51	0.226
5,6-EET (nM)	0.28	$\pm$	0.19	0.33	$\pm$	0.40	0.523
5,6-DHET (nM)	2.86	$\pm$	1.88	1.59	$\pm$	1.09	<b>0.003</b>
5,6-Ratio	0.19	$\pm$	0.27	0.25	$\pm$	0.19	<b>0.034</b>
8,9-EET (nM)	0.65	$\pm$	0.64	0.89	$\pm$	1.13	>0.999
8,9-DHET (nM)	0.45	$\pm$	0.28	0.50	$\pm$	0.36	0.658
8,9-Ratio	2.62	$\pm$	3.63	2.64	$\pm$	4.72	0.911
11,12-EET (nM)	170.48	$\pm$	132.45	146.65	$\pm$	104.12	0.631
11,12-DHET (nM)	0.59	$\pm$	0.36	0.61	$\pm$	0.24	0.361
11,12-Ratio	399.07	$\pm$	465.97	308.92	$\pm$	291.50	0.283
14,15-EET (nM)	0.39	$\pm$	0.26	0.50	$\pm$	0.62	0.486

14,15-DHET (nM)	0.47	±	0.26	0.59	±	0.27	0.051
14,15-Ratio	0.97	±	0.72	0.81	±	0.73	0.147
TBxB2 (nM)	69.61	±	97.96	53.91	±	42.15	0.864
PGE2 (nM)	0.55	±	0.37	0.57	±	0.48	0.593
PGD2 (nM)	1.04	±	1.29	1.25	±	1.41	0.967
LTB4 (nM)	5.27	±	0.57	5.36	±	0.78	0.837
5-HETE (nM)	155.31	±	156.77	162.87	±	162.61	0.746
8-HETE (nM)	3.51	±	2.66	3.53	±	4.11	0.449
9-HETE (nM)	16.49	±	17.37	15.93	±	21.25	0.340
11-HETE (nM)	20.40	±	17.63	19.00	±	22.97	0.449
12-HETE (nM)	171.91	±	148.01	148.16	±	117.99	0.688
15-HETE (nM)	137.76	±	109.79	131.33	±	145.66	0.320
16-HETE (nM)	0.20	±	0.06	0.24	±	0.10	0.340
19-HETE (nM)	176.98	±	190.56	207.08	±	210.74	0.943
20-HETE (nM)	73.50	±	57.86	64.25	±	48.96	0.631