

# **Evaluating growth pattern and assessing future scenario of COVID-19 epidemic of India**

**Nandan L. Patil<sup>1\*</sup> and Lakshmi R. Gangavati<sup>1</sup>**

<sup>1</sup>Department of Genetics and Plant Breeding,

College of Agriculture,

University of Agricultural Sciences,

Dharwad- 580 005.

\* Corresponding author.

Email address: [patilnads@gmail.com](mailto:patilnads@gmail.com)

## 1 **Abstract**

2 COVID-19 the modern pandemic has spread across the world at a rapid pace. SARS-CoV  
3 2 is highly transmissible and the rate of infection is exponential for heavily infected countries.  
4 Asymptomatic carriers and longer incubation period have been key towards such a large-scale  
5 distribution of disease. Data released by official authorities on COVID-19 cases is significantly  
6 affected by various factors such as size of sample, incubation period of disease and time taken to  
7 test the sample. These factors mask the useful pattern (signal) of disease spread. Thus, an  
8 ingenious method to group data into cycles of five and seven days, for studying pattern of  
9 disease spread is undertaken. Occurrence of recurrent peaks as indicated by Adjusted Rate of  
10 infection per day indicated the spread of disease has been non-uniform. Currently, India is yet to  
11 reach the critical point (peak of epidemic) with adjusted daily cases more than 1000. Increasing  
12 testing capacity along with random sampling and sample pooling can help in preventing  
13 formation of these peaks in future. The proposed method helps in assessing the current state and  
14 for predicting future scenarios epidemics.

15 **Key Words:** COVID-19, SARS-CoV 2, India, epidemic, rate of Infection, daily cases

16

## 17 **1. Introduction**

18 Novel coronavirus has swept the world at rapid pace with more than 3 million cases  
19 across 185 countries since its first report on November, 2019 in Wuhan, China. The disease was  
20 termed as Public Health Emergency by World Health Organization (WHO) on January 30, 2020  
21 and further on 11 March was announced as pandemic. The pandemic has resulted in huge  
22 economic cost, loss of jobs and resulting in largest global recession since The Great Depression

23 (Gopinath, 2020). The International Virus Classification Commission (ICTV) classified this  
24 novel coronavirus as Severe Acute Respiratory Syndrome Coronavirus 2 (SARS-CoV-2) on  
25 February 11, 2020 and on the same day WHO named the disease as COVID-19. Virus is  
26 transmitted mainly through respiratory droplets and has high transmissibility rate but low  
27 mortality unlike Middle Easter Respiratory Syndrome (MERS) and SARS-CoV 1 which have  
28 high mortality rate. The mean incubation period of disease is 6.6 with range of 2.1 to 11.1  
29 days (Backer et al., 2020, Huang et al., 2020). COVID-19 symptoms include aches and pains,  
30 nasal congestion, runny nose, sore throat or diarrhea and needs technical tests such as RT-PCR,  
31 Anti body testing or CRISPAR (Liu et al., 2020) to detect the virus. Many cases are reported  
32 where no symptoms are visible but the person is tested positive for the virus. These asymptomatic  
33 people have been key for such a large scale spread of virus.

34 India reported its first case on 30 January, 2020 from Southern state of Kerala, who was a  
35 returning student from Wuhan, China. Only three cases were reported up till 1 March and since  
36 then the cases have increased exponentially and as of April 23, 27000 cases have been identified  
37 with Maharashtra recording highest positive cases. The virus has entered the country through  
38 foreign travelers coming mainly from China, Europe US and Gulf countries. Foreign flights were  
39 stopped on 22 March and nation-wide lockdown was announced on 24 March for 21 days i.e. up  
40 till 14 April which was further extended to 3 May. But large population of migrant workers had  
41 returned to their native place during initial days of lockdown. Currently, in India, asymptomatic  
42 people with international travel history and all contacts of laboratory confirmed positive cases  
43 are being tested for the virus mainly through RT-PCR. As of now there have been no effective  
44 drugs or vaccine against the disease, thus identifying positive cases and isolating/treating them is  
45 an effective option.

46           Compartmental models namely SIR (Susceptible, Infectious and Recovered) models and  
47 their modification (Giordano et al., 2020, Wu et al., 2020, Prem et al., 2020) are widely used in  
48 analyzing the epidemiological data. Furthermore, statistical models such as ARIMA and neural  
49 networks (Wei et al., 2016, Anne and Jeeva, 2020, Ceylan, 2020) are used in forecasting the  
50 COVID-19 cases. These models become complex when a high number of parameters are  
51 involved. Thus, here we formulate a simple statistical method to study the growth of epidemics  
52 and predict future scenarios based on only the positive cases reported.

## 53 **2. Methodology**

54           Data of positive cases for COVID-19 epidemic was collected from Johns Hopkins  
55 University Center for Systems Science and Engineering (JHU CSSE, 2020) starting from 22  
56 February up to 23 April.

57           Let the first day *i.e.* February 22 be  $d_1$ , February 23  $d_2$  and so on with  $d_n$  being  $n^{\text{th}}$  day from  
58 the first day.

59            $cc_1, cc_2, cc_3, \dots, cc_n$  is number of cumulative cases (cc) for the  $d_1, d_2, d_3, \dots, d_n$  day and  
60            $dc_1, dc_2, dc_3, \dots, dc_n$  is number of daily cases (dc) for  $d_1, d_2, d_3, \dots, d_n$  day.

61

62           i) Estimating Unadjusted Rate of Infection( $UR_d$ ):

63

$$UR_d = \frac{dc_n}{dc_{(n-1)}} \times 100$$

64           where,

65            $UR_d$  is Unadjusted **R**ate of Infection for  $d^{\text{th}}$  day estimated from raw data,

66  $dc_n$  is number of positive cases for  $n^{th}$  day,

67  $dc_{(n-1)}$  is number of positive cases for  $(n-1)^{th}$  day

68 Cumulative cases (cc) or daily cases (dc) reported by official authorities is a mixture of  
69 both useful signal and noise. A clear pattern of epidemic growth cannot be ascertained from the  
70 raw data itself. Thus, in order to obtain a clear picture of epidemic growth and to minimize the  
71 noise (sampling effect) in the data we group the data based on five day and seven day cycle to  
72 estimate new coefficients  $R_{cmi}$  and  $Adc_n$  as described below.

73 Let 'c' be the number of days in a given cycle, then number of possible combinations the  
74 data can be grouped is equal to 'm' which are repeated over 'i' intervals where 'm' is equal to  
75 'c'. These combinations are referred to as Models from henceforth. In the current study we group  
76 the data in cycle of five days (5D) and seven days (7D).

77 ii) Total positive cases for  $m^{th}$  model during  $i^{th}$  interval for cycle of seven days (c=7) is  
78 calculated as follows,

79 
$$PCI_{711} = d_1 + d_2 + \dots + d_7$$

80 
$$PCI_{721} = d_2 + d_3 + \dots + d_8$$

81 
$$\cdot \quad \cdot$$

82 
$$\cdot \quad \cdot$$

83 
$$\cdot \quad \cdot$$

84 
$$PCI_{771} = d_7 + d_3 + \dots + d_{13}$$

85

86 For 'c' day cycle,

$$PCI_{cmi} = \sum_{n=c(i-1)+m}^{m+ci-1} dc_n$$

87 where,

88  $c = 1,2, 3, \dots, c$  and  $m = 1,2, 3, \dots, m$  and  $i = 1,2, 3, \dots$

89  $PCI_{cmi}$  is **P**ositive **C**ases of  $m^{\text{th}}$  model during  $i^{\text{th}}$  Interval for ' $c$ ' day cycle

90  $dc_n$  is number of **d**aily **c**ases for  $n^{\text{th}}$  day

91 iii) Estimating Rate of infection per ' $c$ ' day cycle ( $R_{cmi}$ ):

$$R_{cmi} = \frac{PCI_{cmi}}{PCI_{cm(i-1)}} \times 100$$

92 where,

93  $R_{cmi}$  is **R**ate of **I**nfection for  $i^{\text{th}}$  interval of  $m^{\text{th}}$  model for ' $c$ ' day cycle

94  $PCI_{cmi}$  is **P**ositive **C**ases of  $m^{\text{th}}$  model during  $i^{\text{th}}$  interval for ' $c$ ' day cycle

95  $PCI_{cm(i-1)}$  is **P**ositive **C**ases of  $m^{\text{th}}$  model during  $(i-1)^{\text{th}}$  interval for ' $c$ ' day cycle

96 iv) Estimating the Adjusted Rate of infection per day ( $AR_{cn}$ ):

97 The **A**ddjusted **R**ate of **I**nfection of  $n^{\text{th}}$  day for ' $c$ ' day cycle ( $AR_{cn}$ ) is calculated as,

98 
$$AR_{c1} = \frac{R_{c11}}{c}$$

99 
$$AR_{c2} = \frac{R_{c11}}{c} + \frac{R_{c21}}{c}$$

100 
$$AR_{c3} = \frac{R_{c11}}{c} + \frac{R_{c21}}{c} + \frac{R_{c31}}{c} \quad \text{and so on}$$

101 v) Calculation of Adjusted daily cases ( $Adc_n$ ):

102 The Adjusted daily cases for 'c' day cycle for n<sup>th</sup> day ( $Adc_n$ ) is calculated as,

103

104 
$$Adc_1 = \frac{PCI_{c11}}{c}$$

105 
$$Adc_2 = \frac{PCI_{c21}}{c} + \frac{PCI_{c11}}{c}$$

106 
$$Adc_3 = \frac{PCI_{c31}}{c} + \frac{PCI_{c21}}{c} + \frac{PCI_{c11}}{c}$$
 and so on.

107 The unadjusted daily cases ( $Udc_n$ ) is defined as daily cases calculated from official record i.e.

108  $dc_1, dc_2, dc_3 \dots$

### 109 **2.1 Outliers**

110 If the magnitude of  $PCI_{cm(i-1)}$  is less than 10 it leads to greater  $R_{cmi}$  which effects the

111  $AR_{cn}$  and masks pattern in the growth of epidemic. Thus, if  $PCI_{cm(i-1)} < 10$ , then respective

112  $R_{cmi}$  are removed from analysis.

### 113 **2.2 Critical Point**

114 Critical point is defined as a stage where the  $R_{cmi}$  or adjusted daily cases ( $AR_{cn}$ ) are equal

115 to 100 and  $\frac{100}{c}$ , respectively. In other words, critical point refers to period past the peak of the

116 epidemic curve. The  $AR_{cn}$  critical point for 5D and 7D cycle is 25 and 14.29, respectively.

### 117 **2.3 Classifying the growth of epidemic period**

118 Based on the critical point, the epidemic period can be classified into two phases,

119     **a. Growth phase:** It is the initial phase where epidemic has not yet reached the critical point.  
120             During this period of epidemic during which the number of daily cases is continuously  
121             rising and epidemic is yet to reach its peak stage.

122     **b. Safe phase:** It is the phase after passing the critical point or peak of epidemic when the  
123             daily cases are continuously decreasing.

## 124     **2.4 Prediction of $AR_{cn}$ values**

125             ARIMA is a statistical method to forecast time series data which was proposed by Box  
126     and Jenkins in 1970. These models have been commonly used to forecast COVID-19 positive  
127     cases (Benvenuto et. al., 2020, Ceylan, 2020, Anne and Jeeva, 2020). ARIMA model was used to  
128     forecast the  $AR_{cn}$  value of 5D and 7D cycle. The three best fitting parameters of ARIMA model  
129     p (order of autoregression), d (degree of difference) and q (order of moving average) were (2, 0,  
130     0) and (3, 2, 1) for 5D and 7D cycle selected based on root mean square error (RMSE).  
131     Furthermore, univariate Neural Network Models (NNM) were used in predicting the  $AR_{cn}$  of 5D  
132     and 7D cycle by using *forecast* package in R.

## 133     **3. Result and Discussion**

134             COVID-19 pandemic has caused large scale disruption of normal life with nationwide  
135     lockdown being imposed to control spread of virus. We have analyzed the data in a novel way to  
136     understand growth of virus and anticipate future conditions. Unadjusted rate of infection per day  
137     ( $UR_d$ ) plot (Figure 1) estimated from raw data shows continuous fluctuation throughout the  
138     epidemic period. No growth pattern of disease can be delineated from the plot. The reason for  
139     such fluctuation is that raw data is a mixture of both useful signal which represents growth of  
140     epidemic along with redundant noises which mask the signal. The noise in the data arises due to



141 various reasons such as sampling size, time taken to test the sample, time taken to trace the  
142 contacts and incubation period for the patient. Thus, making it impossible to assess present  
143 situation and predict future conditions using  $UR_d$  plots.

### 144 **3.1 Analyzing Adjusted Rate of Infection per day ( $AR_{cn}$ )**

145 In order to reduce the noise embedded in raw data, we grouped raw data into 7D and 5D  
146 cycle and estimated the adjusted rate of infection per day.  $AR_{cn}$  plot (Fig. 2 and Fig. 3) for 7D  
147 and 5D cycle reveals the pattern of spread of Epidemic. The Epidemic period can be classified  
148 into four and three phases (Table 1) as per  $AR_{cn}$  of 5D and 7D cycle respectively. Phase 1 (5D)  
149 was from 5 March to 16 March, with peak on 14 March and Phase 2 (5D) from 17 March to 28  
150 March with peak on 21 March. The first two phases of 5D combine to form Phase 1 of 7D cycle  
151 which was from 5 March to 29 March with peak on 22 March. During these initial stages of  
152 epidemic, the virus is difficult to detect due to high incubation period, asymptomatic carriers and  
153 technical tests to detect the virus. Thus, the virus spreads can spread unnoticed if proper  
154 preventive measures are not undertaken. With increase in testing capacity a greater number of  
155 COVID-19 cases are detected in short time leading to formation of peak on 22 April.

156 Phase 3 (5D) from 29 March to 8 April with peak on 2 April and Phase 2 (7D) 30 March  
157 to 13 April with peak on 3 April can be attributed to Tablighi Jamaat congregation which was  
158 held in New Delhi during mid-March. Many of the attendees have been tested positive. Finally,  
159 we observe another peak on 13 April under Phase 4 (5D) starting from 10 April. In a  $AR_{cn}$  plot  
160 the new peaks formed are more severe than that of early ones. Meaning peak of Phase 4 (5D) is  
161 more severe than peak of Phase 3 (5D) and Phase 2 (7D) which is further more severe than peak  
162 of Phase 1 (7D) or Phase 2 (5D). The 5D cycle detected a greater number of peaks than 7D cycle  
163 as it is more sensitive to sudden increase in cases within short period of time. The recurrent

164 peaks which we observe in  $AR_{cn}$  plots may be attributed to limited coverage of testing facility  
165 which allows the virus to spread through asymptomatic carriers.

### 166 **3.2 Impact of Nationwide lockdown**

167 Nationwide shutdown started from 24 March and is scheduled to be lifted on May 3. As  
168 seen from the  $AR_{cn}$  plot the rate of new infection starts to decrease after its peak on March 22.  
169 The nationwide lockdown has significantly slowed the spread of virus, but it should be followed  
170 by wide scale testing in order to identify the infected people. Delay in action or lack of testing  
171 would lead to increase in  $AR_{cn}$  or under more severe conditions new peaks are formed.

### 172 **3.3 Analyzing $R_{cmi}$ plots**

173  $R_{cmi}$  represents change in rate of infection for a given days of cycle. When the spread is  
174 constant the  $R_{cmi}$  of all models for any days of cycle start converging and continue in same  
175 direction. But when growth is non-uniform the models start bisecting each other.

176 For seven-day cycle  $R_{cmi}$  plot (Fig. 4) highest value is 521 of Model 7 for interval March  
177 20 to March 26 which coincides with peak of Phase 1 (7D). The models are continuously  
178 bisecting each other indicating the spread or detection of virus has not been uniform. Similarly,  
179  $R_{cmi}$  plot of five-day cycle indicates same trend of bisecting models with highest value of  
180 455.263 for interval March 20 to March 24 coinciding with peak of Phase 2 (5D). As seen from  
181 the analysis of other countries (not shown) the Models tend to converge (or are close to each  
182 other) before reaching the critical point.

### 183 **3.4 Adjusted daily cases ( $Adc_n$ )**

184  $Adc_n$  accommodates the fluctuation in the original data to produce a smooth curve  
185 representing increase in daily cases. India passed  $Adc_n$ (Fig. 5) of 1,000 on 14 April and as of 18  
186 April, with current  $Adc_n$  being 1173 and 1164 as calculated from 5D and 7D cycle respectively.  
187  $Adc_n$  is continuously increasing during growth phase whereas starts decreasing once in safe  
188 phase. Thus, delay in reaching the critical point enhances the severity of Epidemic.

### 189 **3.5 Future course of Epidemic**

190 ARIMA model forecasted (Fig. 6) formation of peak on 28 April for  $AR_{cn}$  of 5D cycle  
191 whereas for 7D cycle it forecasted a gradual decrease. Similarly, neural network model (NNM)  
192 forecasted (Fig. 7) towards formation of peak on 30 April for 5D cycle and gradual increase in  
193  $AR_{cn}$  for 7D cycle.

194 As seen from the  $R_{cmi}$  plot, though the rate of infection decreasing it the rate at which it  
195 is decreasing is slowing down. The last  $R_{cmi}$  value for 7D cycle increased from 128.22 ( $R_{769}$ ) to  
196 129.69 ( $R_{779}$ ), similar trend was observed for 5D cycle which indicates a possible rise COVID-  
197 19 positive cases. Presently India is in growth stage where  $Adc_n$  is continuously rising. With  
198 recurrent peaks occurring, India may not reach critical point within May 3, the scheduled date to  
199 end the nationwide lockdown. Reducing  $R_{cmi}$  and  $AR_{cn}$  can be achieved through rigorous  
200 contact tracing and alternate testing methods such as Rapid antibody testing, CRISPAR (Liu et  
201 al., 2020) and sample pooling method (Hogan et al., 2020) can be useful for a large nation as  
202 India.

### 203 **3.6 Limitations of the method**

204 As of other statistical methods there are few limitations for the present method. When the  
205 spread of disease is slow the  $AR_{cn}$  and  $R_{cmi}$  plot can't depict the pattern of disease spread. Thus,

206 the method is useful where local transmission or community spread of disease is prevalent.  
207 Pattern of disease spread is delineated by the method is based on reported data and doesn't  
208 consider the underlying unreported cases.

#### 209 **4. Conclusion**

210  $AR_{cn}$  and  $R_{cmi}$  plots help us in understanding the pattern of Epidemic and predicting the  
211 future scenario by minimizing the noise using in the raw data. The growth of epidemic in India  
212 has been non-uniform and is currently growing in linear fashion with  $Adc_n$  crossing 1,000.  
213 Lockdown combined with greater testing capacity is crucial to contain the spread of novel  
214 coronavirus. In the current study, we employed ingenious method to classify data into 5D and 7D  
215 cycle to assess spread of virus and predict the future progression of epidemic. The method is  
216 simple and robust which uses publicly and most commonly available data.

#### 217 **Acknowledgements**

218 The authors are thankful to all resource persons for their useful suggestions. No funding to  
219 declare.

#### 220 **Conflict of Interest**

221 The authors declare no conflict of interest.

#### 222 **References:**

223 Anne,R., and Jeeva, Carolin S., 2020. ARIMA modelling of predicting COVID-19 infections.  
224 *medRxiv*. <https://doi.org/10.1101/2020.04.18.20070631>.

225 Backer, J. A., Klinkenberg, D. and Wallinga, J., 2020. Incubation period of 2019 novel  
226 coronavirus (2019-nCoV) infections among travelers from Wuhan, China, 20–28 January  
227 2020. *EuroSurveillance*, 25(5), 2000062. [https://doi.org/10.2807/1560-](https://doi.org/10.2807/1560-917.ES.2020.25.5.2000062)  
228 [917.ES.2020.25.5.2000062](https://doi.org/10.2807/1560-917.ES.2020.25.5.2000062).

229 Benvenuto, D., Giovanetti, M., Vassallo, L., Angeletti, S., Ciccozzi, M., 2020. Data in brief  
230 application of the ARIMA model on the COVID- 2019 epidemic dataset. *Data Br*  
231 29,105340. <https://doi.org/10.1016/j.dib.2020.105340>.

232 Ceylan, Z., 2020. Estimation of COVID-19 prevalence in Italy, Spain, and France. *Sci. Total*  
233 *Environ.* 729,138817. <https://doi.org/10.1016/j.scitotenv.2020.138817>.

234 Giordano, G., Blanchini, F., Bruno, R., Colaneri, P., DiFilippo, A., DiMatteo, A. and Colaneri,  
235 M., 2020. Modelling the COVID-19 epidemic and implementation of population  
236 wide interventions in Italy. *Nature Medicine*. 1-6. [https://doi.org/10.1038/s41591-020-0883-](https://doi.org/10.1038/s41591-020-0883-7)  
237 [7](https://doi.org/10.1038/s41591-020-0883-7).

238 Gopinath, G., 2020. The Great Lockdown: Worst economic downturn since the Great Depression, Internatio  
239 nal Monetary Fund (IMF), Insights and analysis on economics and finance. [https://blogs.imf.org/2](https://blogs.imf.org/2020/04/14/the-great-lockdown-worst-economic-downturn-since-the-great-depression)  
240 [020/04/14/the-great-lockdown-worst-economic-downturn-since-the-great-depression](https://blogs.imf.org/2020/04/14/the-great-lockdown-worst-economic-downturn-since-the-great-depression).

241 Hogan, C. A., Sahoo, M. K. and Pinsky, B. A., 2020. Sample pooling as a strategy to detect community  
242 transmission of SARS-CoV-2. *JAMA*. <http://doi.org/10.1001/JAMA.2020.5445>.

243 Huang, C., Wang, Y., Li, X., Ren, L., Zhao, J., Hu, Y., Zhang, L., Fan, G., Xu, J., Gu, X. and Cheng, Z., 2020.  
244 Clinical features of patients infected with 2019 novel coronavirus in Wuhan, China. *The*  
245 *Lancet*. 395(10223), 497-506. [https://doi.org/10.1016/S0140-6736\(20\)30183-5](https://doi.org/10.1016/S0140-6736(20)30183-5).

246 JHU CSSE, 2020. Covid-19 Dashboard, COVID-19 Map - Johns Hopkins Corona virus  
247 Resource Center. <https://coronavirus.jhu.edu/map.html>

248 Liu, R., Fu, A., Deng, Z., Li, Y. and Liu, T., 2020. Promising methods for detection of novel  
249 coronavirus SARS-CoV-2. *View. 1(1)*. <https://doi.org/10.1002/viw2.4>.

250 Prem, K., Liu, Y., Russell, T. W., Kucharski, A. J., Eggo, R. M., Davies, N., Flasche, S., Clifford, S., Pearso  
251 n, C. A., Munday, J. D. and Abbott, S., 2020. The effect of control strategies to reduce social mixing  
252 on outcomes of the COVID-19 epidemic in Wuhan, China: a modelling study. *The Lancet*  
253 *Public Health*. [https://doi.org/10.1016/S2468-2667\(20\)30073-6](https://doi.org/10.1016/S2468-2667(20)30073-6).

254 Wei, W., Jiang, J., Liang, H., Gao, L., Liang, B., Huang, J., Zang, N., Liao, Y., Yu, J., Lai, J. and Qin, F., 2016.  
255 Application of a combined model with autoregressive integrated moving average  
256 (ARIMA) and generalized regression neural network (GRNN) in forecasting hepatitis  
257 incidence in Heng County, China. *PloS one*, 11(6).  
258 <https://doi.org/10.1371/journal.pone.0156768>.

259 Wu, J. T., Leung, K. and Leung, G. M., 2020. Nowcasting and forecasting the potential domestic  
260 and international spread of the 2019-nCoV outbreak originating in Wuhan, China: a  
261 modelling study. *The Lancet*. 395(10225), 689-697. [https://doi.org/10.1016/S0140-](https://doi.org/10.1016/S0140-6736(20)30260-9)  
262 [6736\(20\)30260-9](https://doi.org/10.1016/S0140-6736(20)30260-9).

263

264

265

**Table 1. List of Phases as delineated by  $AR_{cn}$  of 5D and 7D cycle for India**

5D cycle					7D cycle				
	Start	End	Peak	Total cases		Start	End	Peak	Total cases
<b>Phase 1</b>	5 March	16 March	4 March	90	<b>Phase 1</b>	5 March	29 March	22 March	996
<b>Phase 2</b>	17 March	28 March	21 March	800					
<b>Phase 3</b>	29 March	9 April	2 April	4947	<b>Phase 2</b>	30 March	13 April	3 April	8328
<b>Phase 4</b>	10 April	-	13 April	15835*	<b>Phase 3</b>	14 April	-	-	12348*

\* as of 23 April



Unadjusted Rd Plot

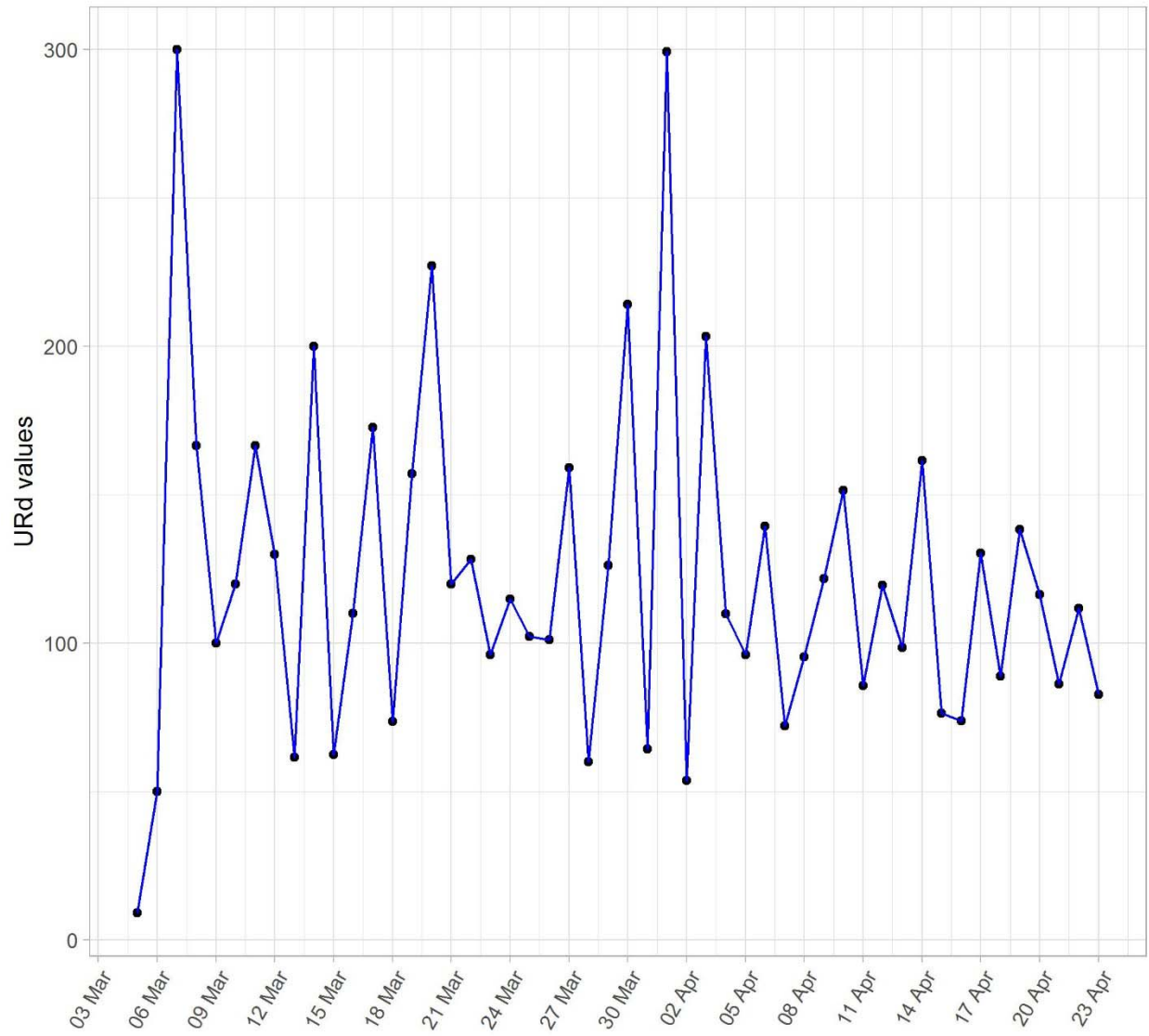
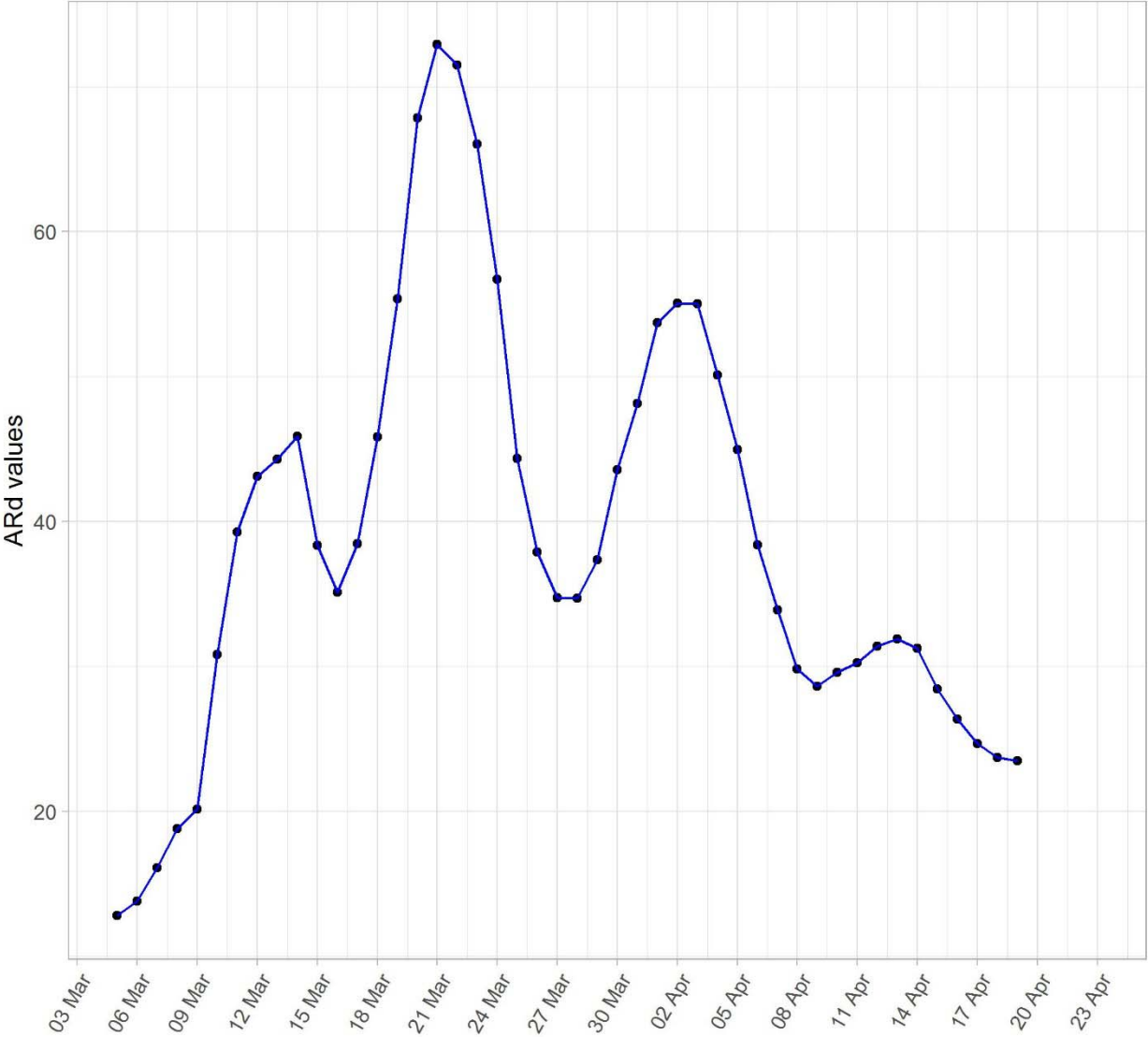


Figure 1. Unadjusted  $AR_{cn}$  from 5 March to 23 April.

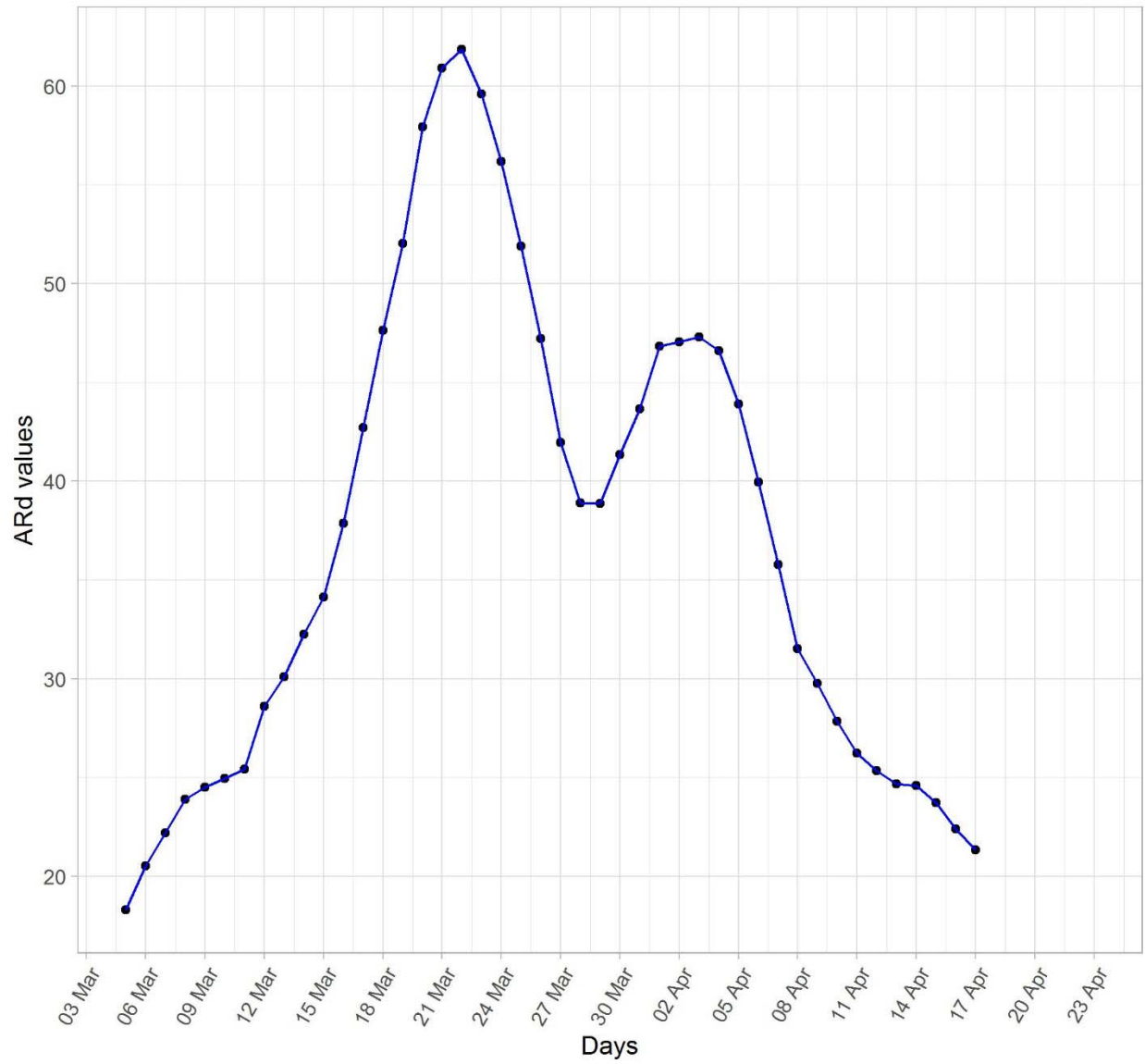
### Adjusted Rd Plot

Five Day cycle

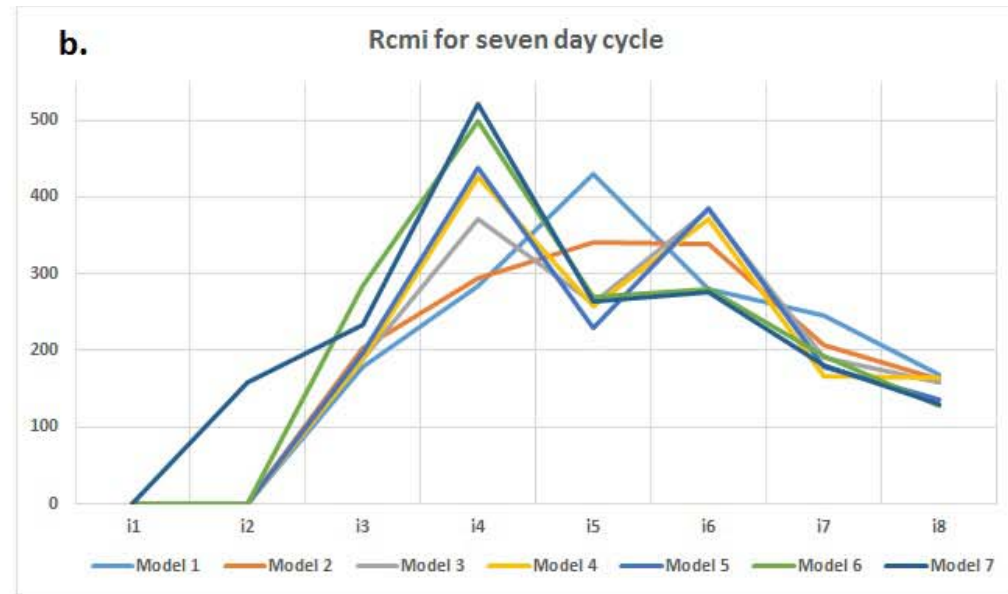
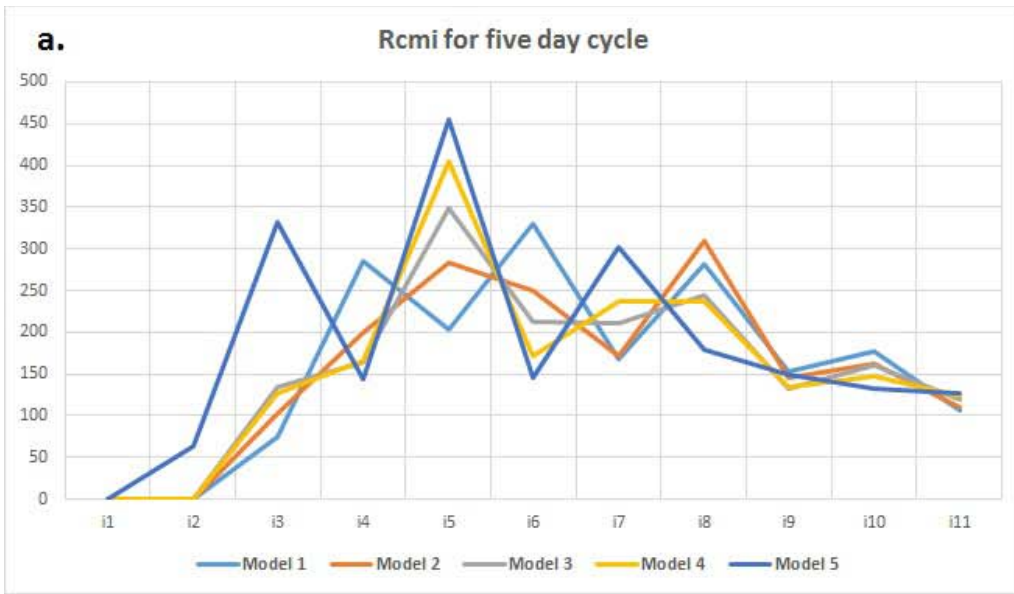


**Figure 2.**  $AR_{cn}$  plot for five day (5D) cycle from 5 March to 19 March.

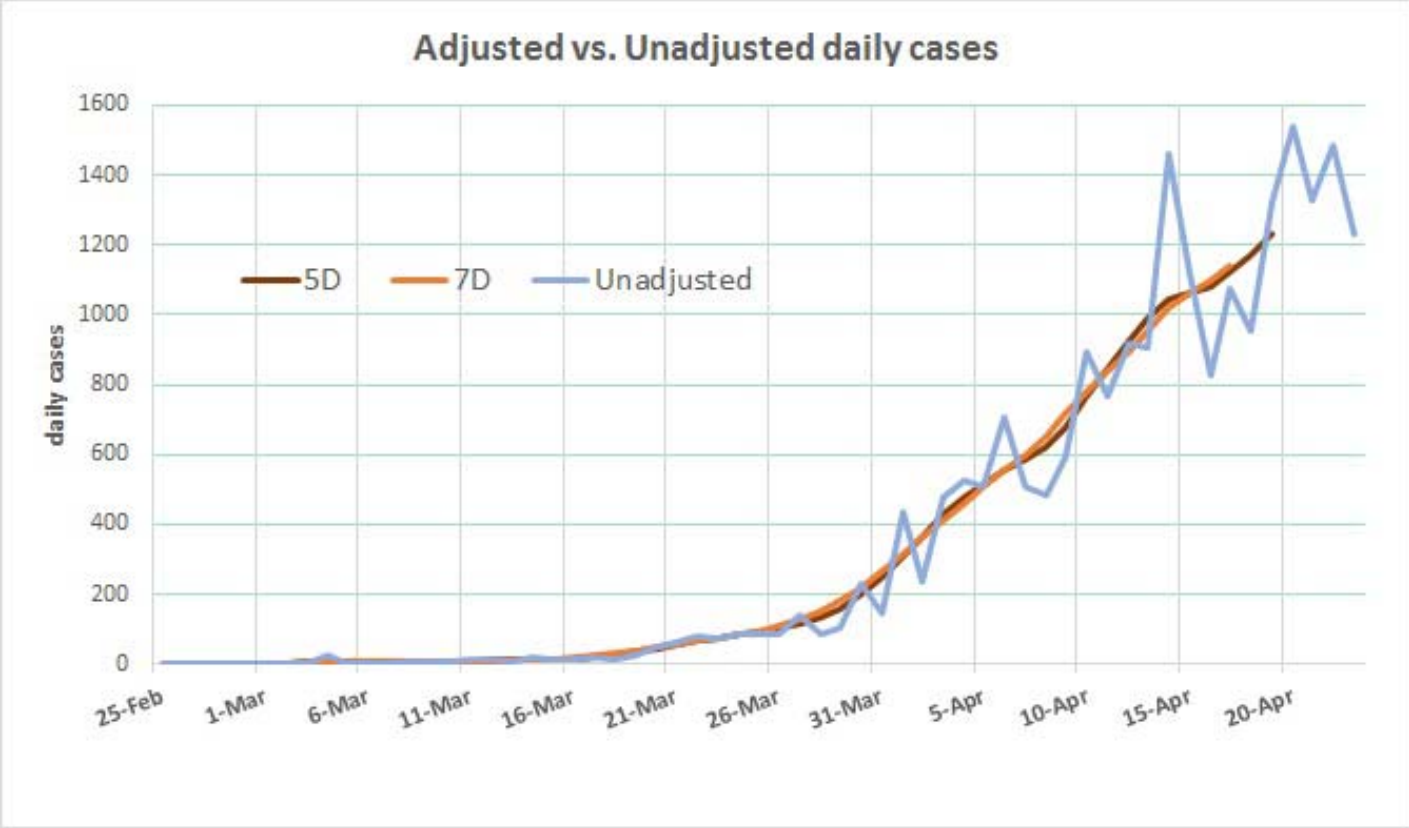
Adjusted Rd Plot  
Seven Day cycle



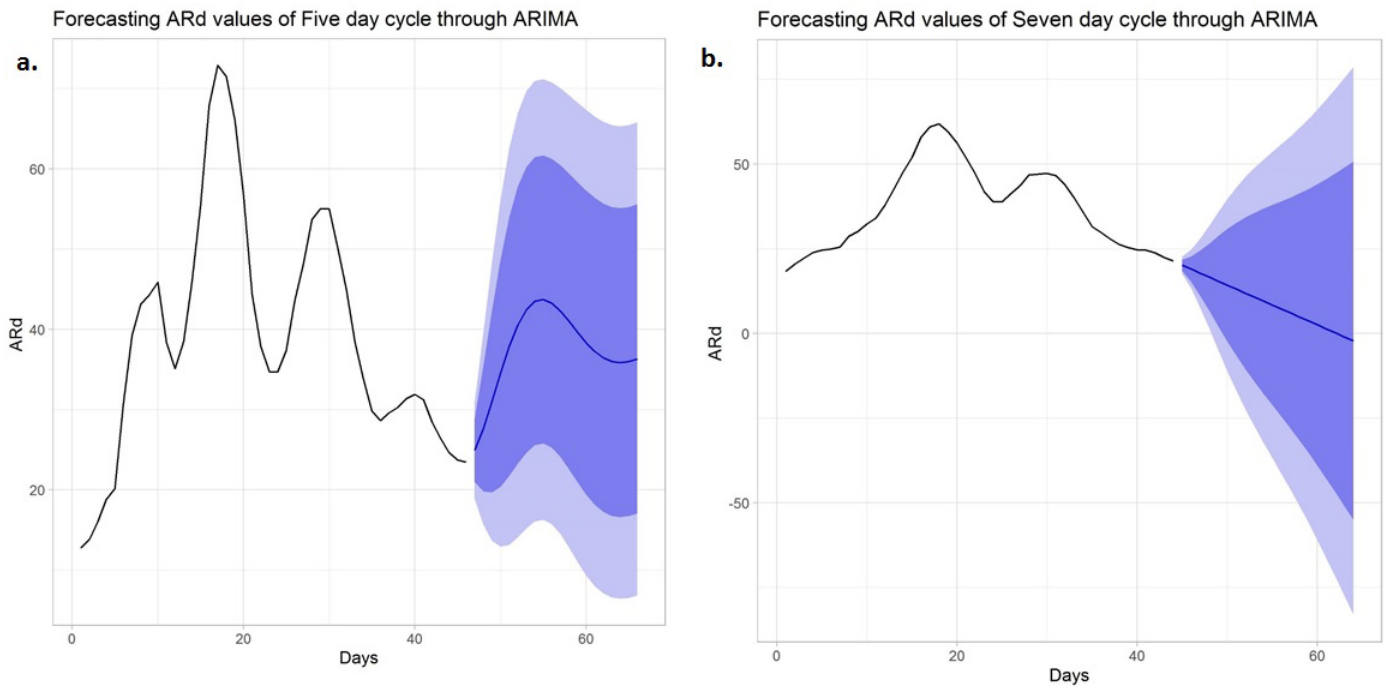
**Figure 3.**  $AR_{cn}$  plot for seven day (7D) cycle from 5 March to 17 March.



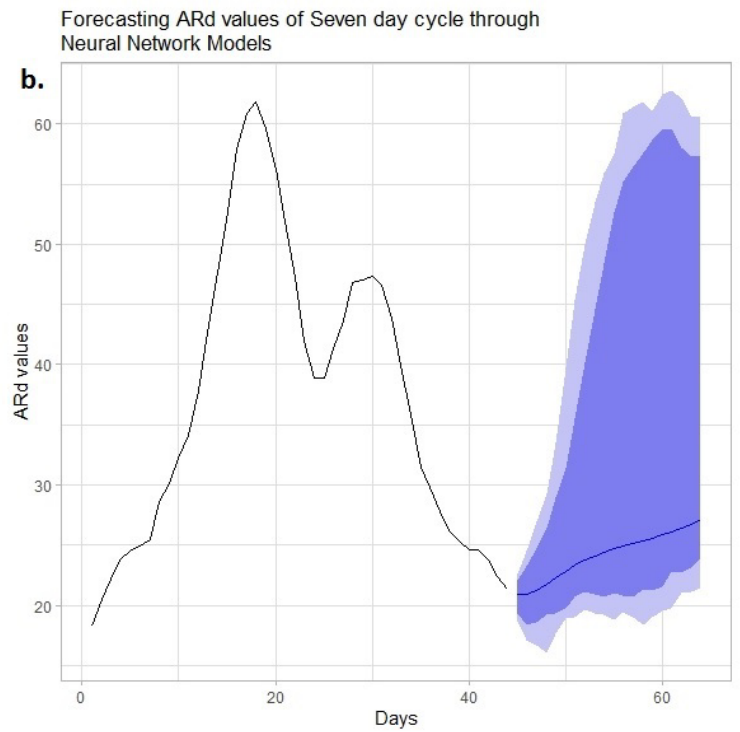
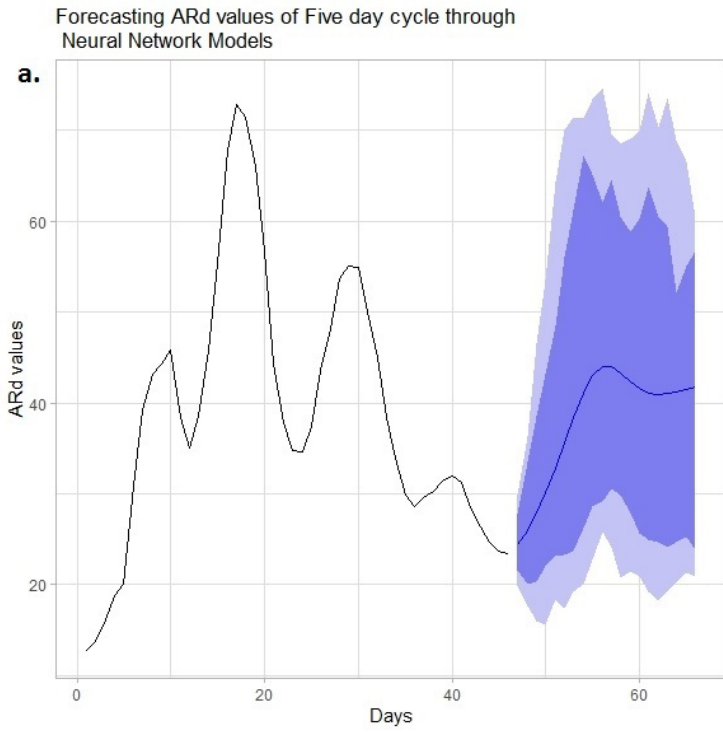
**Figure 4.** **a)**  $R_{cmi}$  plots for five day cycle (5D) across 11 intervals, **b)**  $R_{cmi}$  plot for seven days cycle (7D) across 8 intervals



**Figure 5.** Plot of Unadjusted daily cases ( $Udc_n$ ) (up to 23 April) and Adjusted daily cases ( $Adc_n$ ) estimated from 5D cycle (up to 19 April) and 7D cycle (17 April).



**Figure 6.** Forecasting  $AR_{cn}$  for five day cycle (5D) 20 March to 9 May and seven day cycle (7D) from 18 March to 7 May through ARIMA.



**Figure 7.** Forecasting  $AR_{cn}$  for five day cycle (5D) 20 March to 9 May and seven day cycle (7D) from 18 March to 7 May through Neural Network Models.