

1 **TreadWill: Development and pragmatic randomized controlled trial of an**
2 **unguided, computerized cognitive behavioral therapy intervention in a lower**
3 **middle-income country**

4 Arka Ghosh^{1,*}, Rithwik J. Cherian^{1,2}, Surbhit Wagle^{1,6,7}, Parth Sharma^{1,3}, Karthikeyan R. Kannan¹,
5 Alok Bajpai⁴, Nitin Gupta^{1,2,5,*}

6 1. Department of Biological Sciences and Bioengineering, Indian Institute of Technology Kanpur,
7 Kanpur 208016, Uttar Pradesh, India

8 2. Department of Cognitive Science, Indian Institute of Technology Kanpur, Kanpur 208016,
9 Uttar Pradesh, India

10 3. Department of Computer Science and Engineering, Indian Institute of Technology Kanpur,
11 Kanpur 208016, Uttar Pradesh, India

12 4. Counseling Service, Indian Institute of Technology Kanpur, Kanpur 208016, Uttar Pradesh,
13 India

14 5. Mehta Family Center for Engineering in Medicine, Indian Institute of Technology Kanpur,
15 Kanpur 208016, Uttar Pradesh, India

16 6. Max Planck Institute for Brain Research, Max-von-Laue Strasse 4, 60438 Frankfurt am Main,
17 Germany

18 7. Institute of Physiological Chemistry, University Medical Center Mainz, Mainz, Germany

19
20 * Corresponding authors: Arka Ghosh (arkag@iitk.ac.in) and Nitin Gupta (guptan@iitk.ac.in)

21 Postal address: Dr. Nitin Gupta, Department of Biological Sciences and Bioengineering, Indian
22 Institute of Technology Kanpur, Kanpur 208016, Uttar Pradesh, India

23 **ORCID IDs:**

24 Arka Ghosh: 0000-0003-0702-258X

25 Rithwik J. Cherian: 0000-0003-0562-6689

26 Surbhit Wagle: 0000-0002-3825-6875

27 Karthikeyan R. Kannan: 0000-0001-6148-6145

28 Nitin Gupta: 0000-0002-8408-3848

29

30 **Abstract**

31 Most individuals vulnerable to depression do not receive adequate or timely treatment
32 globally. Unguided computerized cognitive behavioral therapy (cCBT) has the potential to
33 bridge this treatment gap. However, the real-world effectiveness of unguided cCBT
34 interventions, particularly in low- and middle-income countries (LMICs), remains inconclusive.
35 In this study, we report the design and development of a new unguided cCBT intervention,
36 TreadWill, and its pragmatic evaluation. TreadWill was designed to be fully automated,
37 engaging, easy to use, and accessible in LMICs. To evaluate its effectiveness and engagement
38 level, we performed a double-blind, fully-remote, randomized controlled trial with 598
39 participants in India. The use of TreadWill significantly reduced depression-related and anxiety-
40 related symptoms. Compared with a plain-text version with the same therapeutic content, the
41 full-featured version of TreadWill showed significantly higher engagement. Overall, our study
42 provides a new resource and evidence for the use of unguided cCBT as a scalable intervention
43 in LMICs.

44

45 **Introduction**

46 More than 264 million individuals suffer from depressive disorders worldwide (James et al.,
47 2018). Despite the availability of evidence-based pharmacological and psychological treatment
48 approaches, 76% to 85% of individuals suffering from mental health disorders do not get any
49 treatment in low- and middle-income countries (LMICs) (Wang et al., 2007). Barriers to
50 accessing treatment for mental health disorders include the lack of access to treatment
51 options, high cost, fear of social stigma, and an inclination to self-manage the problem
52 (Andrade et al., 2014; Patel et al., 2018; Saxena et al., 2007). In India, there is a treatment gap
53 of 85.2% for major depressive disorders (Gururaj et al., 2016).

54 One approach to bridge this treatment gap is to deliver computerized psychotherapy. The first
55 therapeutic chatbot, ELIZA, was developed in 1966 (Weizenbaum, 1966); it was a rudimentary
56 program based on text rephrasing rather than evidence-based methods. The first computer-
57 assisted Cognitive Behavioral Therapy (CBT)-based program for depression was delivered in
58 1982 (Selmi et al., 1982). However, in the past two decades, the advent of stable internet
59 connection and the pervasiveness of smartphones and computers have made it feasible to
60 deploy technological interventions at scale.

61 Computerized CBT (cCBT) has gained traction as a viable treatment modality, with more than
62 200 trials conducted so far (Andersson & Carlbring, 2021). cCBT for depressive disorders, both
63 guided and unguided, has been evaluated in several clinical trials worldwide. Recent studies
64 and meta-analyses indicate that for depressive symptoms, guided cCBT interventions are more
65 beneficial than unguided cCBT interventions (Cuijpers et al., 2019; Gilbody et al., 2017;
66 Johansson & Andersson, 2012; Karyotaki et al., 2021; Wright et al., 2019). Carlbring et al.

67 showed equivalent effects between guided cCBT interventions and face-to-face CBT (Carlbring
68 et al., 2018). Including guided cCBT intervention with treatment-as-usual does not add any
69 extra benefits (Gilbody et al., 2015). Moreover, while guided cCBT intervention can be a feasible
70 option in developed countries (Andrews et al., 2018), it is not feasible in low- and middle-
71 income countries (LMICs) due to the acute shortage of mental health professionals (Bruckner et
72 al., 2011).

73 Unguided cCBT interventions have the potential to bridge the treatment gap in LMICs. The
74 evidence for unguided cCBT interventions is mixed, with some meta-analyses showing that they
75 are effective with a small or medium effect size (Karyotaki et al., 2017; Twomey et al., 2020;
76 Wright et al., 2019) and some showing that they are not effective (Garrido et al., 2019; Harrer
77 et al., 2019; Välimäki et al., 2017). Note that the unguided studies included in the meta-
78 analyses often involved initial contact with humans for diagnostic interviews (Berger et al.,
79 2011; de Graaf et al., 2009; Farrer et al., 2011; Meyer et al., 2015; Mira et al., 2017; Spek et al.,
80 2007), weekly telephone contact support (Christensen et al., 2004; Phillips et al., 2014), or
81 treatment-as-usual (Gilbody et al., 2015; Klein et al., 2016). Even minimal human contact can
82 increase adherence to the interventions compared with a study without any such contact
83 (Moritz et al., 2012; Morriss et al., 2021). Indeed, Fleming et al. (Fleming et al., 2018) found that
84 adherence rates observed in trial settings fail to translate into the real world. Recent meta-
85 analyses have reported a positive correlation between treatment adherence and treatment
86 effects (Karyotaki et al., 2017; Wright et al., 2019). Also, a recent meta-analysis found that
87 existing cCBT interventions, guided or unguided, had low acceptability among patients, less
88 than even waitlist (Cuijpers et al., 2019).

89 Studies on cCBT interventions have been conducted predominantly in high-income countries
90 (Lehtimäki et al., 2021), but see (Martínez et al., 2018) for depression and (Fu et al., 2020) for
91 all mental health disorders in LMICs. A recent meta-analysis reported that 92% of the studies on
92 diagnosed depression had been conducted in Western Europe, North America, or Australia
93 (Köhnen et al., 2021). The interventions have been developed, evaluated, and made available
94 for free only in these high-income regions. There is a need for unguided interventions that are
95 more effective, have higher adherence, and are available free of cost for wide accessibility in
96 LMICs.

97 In this study, we develop and evaluate such a cCBT intervention, TreadWill. We included several
98 features in TreadWill that could increase adherence to and improve the effectiveness of a
99 completely unguided intervention. We also developed an active control version of TreadWill
100 that presented the same therapeutic content without said features. We designed a fully remote
101 three-armed randomized controlled trial — experimental version of TreadWill, active control
102 version of TreadWill, and waitlist control. We hypothesized that participants assigned to the
103 experimental group would show significantly more improvement in depressive and anxiety
104 symptom severity than the control groups. We also hypothesized that the participants in the

105 experimental group would show significantly more engagement in terms of modules completed
106 and absolute time used compared with the active control group participants.

107

108 **Methods**

109 Study design

110 We designed a fully remote randomized controlled trial to test the effectiveness of the
111 experimental version of TreadWill compared with an active control version and a waitlist
112 control version. We planned to recruit 600 participants in a 1:1:1 distribution across the three
113 groups. We implemented simple randomization using an automated randomization function
114 (developed in Python 3.4.3). This trial was registered in ClinicalTrials.gov before
115 commencement (Identifier: NCT03445598)

116 Participant recruitment and screening

117 We recruited participants using both offline and online publicity. We displayed flyers in the
118 residential hostels, research buildings, and lecture halls of the Indian Institute of Technology
119 (IIT), Kanpur. A press release helped with coverage in newspapers and social media.

120 The publicity material included a website link to join the study. The link opened a webpage that
121 provided information about the study and accepted the email-id of the interested participants.
122 Over the next three steps, the webpage collected the demographic data, the baseline Patient
123 Health Questionnaire-9 (PHQ-9) score (Kroenke et al., 2001), and the informed consent from
124 the potential participants. The entire participant recruitment process was automated to
125 eliminate human contact. To be eligible to participate in the study, an individual must have
126 been a 16–35-year-old Indian resident. They must have been fluent in English and must have
127 had access to an internet-enabled computer or tablet device. They must have scored between
128 5-19 (both inclusive) in PHQ-9 with a score of 0 on the 9th question. We decided to include
129 participants with mild symptoms of depression (a score of 5-9 in PHQ-9) and exclude those with
130 severe symptoms (a score >19) because our program was targeted not at the clinical population
131 but at a wider population with vulnerability for depression. We excluded individuals who were
132 unemployed, had a diagnosis of bipolar disorder or psychosis, or reported that they just wanted
133 to check out the site and did not plan to complete it (the last condition was added after trial
134 commencement to exclude casual visitors to the website). Because of the pragmatic nature of
135 our study, we included participants regardless of whether they were availing treatment for
136 depression. Once a potential participant met the inclusion/exclusion criteria and provided
137 informed consent (for individuals of age 16-17, informed consent was also required from a
138 parent or guardian), the individual was scheduled to be recruited in the study. Eighteen hours
139 later, the individual was randomized to one of the three groups and received a unique link via
140 email. The delay of 18 hours was included to prevent individuals from signing up using
141 disposable temporary email ids. They were counted as a participant in the study only after

142 clicking on the unique link and were led to a signup page (for participants assigned to the
143 experimental or active control group). The participants assigned to the waitlist control group
144 were led to a page to collect their baseline Generalized Anxiety Disorder-7 (GAD-7) score
145 (Spitzer et al., 2006); GAD-7 scores of experimental and active control groups were taken as
146 part of the intervention. Participants did not receive any monetary compensation.

147 Ethics

148 The Institutional Ethics Committee, Indian Institute of Technology Kanpur, provided the ethical
149 clearance to conduct this study (IITK/IEC/2017-18 II/1).

150 Safety check

151 At any stage in the intervention, if we detected severe depressive symptoms or suicidal
152 ideation, we blocked access to TreadWill. Severe depressive symptoms were determined as a
153 total score >19 in PHQ-9. Suicidal ideation was detected by a score >0 in the 9th question of
154 PHQ-9 and a total score >4 in the Suicidal Intent Questionnaire (SIQ) (Gupta et al., 1983). In
155 such cases, an email and SMS alerts were sent to the participants (and their *buddy*, if they had
156 one in the program) requesting them to seek professional help. For participants aged 16-17
157 years, an email notification was sent to the parent or guardian as well.

158 Automated notifications

159 Participant contact was minimal and automated. Participants who initiated the recruitment
160 process but did not complete it were sent automated email reminders encouraging them to
161 complete the process. Participants also received periodic automated email and SMS reminders
162 nudging them to use TreadWill (see [Supplementary Table S1](#) for more details). The program
163 asked the participants about their preferred time to log in; using this information, email and
164 SMS alerts were sent 10 minutes in advance to remind the participants. The research team did
165 not initiate any direct contact with the participants. Technical support via email was provided in
166 case the participants sent an email requesting it.

167 Development of the intervention

168 We used the Django framework for developing the TreadWill website. We used Google Slides to
169 embed the slides and YouTube to embed the videos in the website. We used images with a
170 Creative Commons license for use in Slides and Videos. We used images from pics.stir.ac.uk for
171 the “Identify the friendly face” game. The content and the website went through multiple
172 rounds of checking by the development team and other volunteers to fix errors before
173 launching the trial.

174 Assessments

175 We used Patient Health Questionnaire-9 (PHQ-9) (Kroenke et al., 2001) and Generalized Anxiety
176 Disorder-7 (GAD-7) (Spitzer et al., 2006) questionnaires to measure depressive and anxiety
177 symptom severity, respectively.

178 For experimental and active control group participants, PHQ-9 was administered at baseline, at
179 the beginning of each module (*except* the first module), after completing all the modules, and
180 at a 90-day follow-up. GAD-7 was administered at the beginning of each module (*including* the
181 first module), after completing all the modules, and at a 90-day follow-up. For the waitlist
182 control group, PHQ-9 and GAD-7 were administered at baseline and after a 42-day interval (this
183 interval was chosen to be at par with the expected intervention duration of approximately 6
184 weeks for completing the 6 modules in the experimental group). After the 42-day interval, the
185 waitlisted participants were also given access to the intervention.

186 Blinding

187 All participants followed the same recruitment procedure. Consequently, the participants were
188 unaware of which version of TreadWill they were assigned to (they did not even know that two
189 different versions existed). Therefore, we expect the placebo effects in the two groups to be
190 similar. Also, the PHQ-9 and GAD-7 data were self-reported on the website, so there was no
191 scope for evaluator bias.

192 Statistical analyses

193 Due to the high dropout rate, we did not assume the PHQ-9 and GAD-7 scores to be normally
194 distributed and therefore used non-parametric statistical tests for analyzing the effectiveness of
195 the intervention. We used the Kruskal-Wallis test for comparing the reduction in depression or
196 anxiety symptom severity from baseline to the primary endpoint between the three groups. For
197 post-hoc analysis between the groups, we used Mann-Whitney U test. The tests were
198 implemented in MATLAB and Python.

199 Since this was the first trial of TreadWill, we did not have a prior estimate of the dropout rate
200 and could not do power calculations. We chose the sample size of 600 participants based on
201 previous studies of similar nature (Arean et al., 2016; Gilbody et al., 2015).

202

203 **Results**

204 Approach taken for developing the intervention

205 We aimed to develop and evaluate a fully automated cCBT intervention, TreadWill, that would
206 be engaging and effective without any expert guidance or contact. We surveyed the existing
207 cCBT interventions before starting the development process and considered factors that may
208 be responsible for the high dropout rates. The common shortcomings that we identified
209 included lack of interactive content, lack of tailoring of the content to different users, lack of
210 peer support for users, and lack of engaging games. Different interventions addressed some of
211 these shortcomings by including the corresponding features, but none of them included all the
212 features. We developed TreadWill to address these shortcomings and hypothesized that it
213 would lead to a high adherence rate and a significant reduction in depressive and anxiety

214 symptom severity. As we do not plan to charge the users, we also expect TreadWill to be more
215 accessible, especially in LMICs, compared to the paid interventions.

216 Design of TreadWill

217 We designed the therapeutic content of TreadWill based on Cognitive Behavioral Therapy
218 (CBT), using Beck 2011 as the primary reference (Beck, 2011). TreadWill delivers the core
219 concepts of CBT in a structured format with six modules (see [Supplementary Table S2](#) for
220 details), in easily understandable language. Each module consisted of four sections –
221 *Introduction, Learn, Discuss, and Practice*. In the *Introduction* section, an automated virtual
222 therapist explained the importance of the module through interactive text-based dialog. The
223 *Learn* section included psychoeducation in the form of slides and videos. Slides consisted of
224 multiple infographics presented sequentially ([Supplementary Fig. S1](#)). Videos consisted of
225 animated content with a voiceover explaining the concepts visible on the screen. In the *Discuss*
226 section, the participant learnt to apply the psychoeducation to real-life situations through
227 *conversations*. These *conversations* were text-based dialogues with an automated virtual
228 patient ([Supplementary Fig. S2](#)) presented in an interactive format designed to simulate human
229 chat. Although the conversations were pre-programmed, in many places the participants could
230 choose from more than one response, thus providing some control to the user in steering the
231 dialog. The *Practice* section included interactive quizzes on the material covered in each
232 module.

233 To ensure sequential progression through the intervention, only the first module was initially
234 accessible to the user and the later modules were locked. After completion of all sections in a
235 module and a 4-day gap since its unlocking (to prevent rushing through the modules), the next
236 module was unlocked. Steps within a module were also unlocked gradually upon completion of
237 preceding steps. Each participant had a maximum of 90 days to complete the six modules
238 starting from their first login. After 90 days, they could continue to use the modules unlocked
239 until then but could not unlock new modules. We did this to restrict participants' exposure to
240 new therapeutic content after 90 days and provide a clear deadline, as recommended by
241 several studies (Andersson et al., 2009; Meyer et al., 2009; Nordin et al., 2010).

242 Interactive games and CBT forms in TreadWill

243 TreadWill included two interactive games. The “Identifying thinking errors” game was aimed at
244 training the participants in spotting thinking errors in their negative automatic thoughts. The
245 gameplay involved presentation of a situation, a related negative automatic thought, and a list
246 of 10 thinking errors, from which the participant had to select one or more thinking errors
247 present in the thought. Selecting a correct option allowed the participant to move to the next
248 level. On selecting an incorrect option, feedback was provided along with an opportunity to try
249 again. The “Identify the friendly face” game is based on the training paradigm developed by
250 Dandeneau and Baldwin to train participants to overcome the negative attention bias and
251 improve their self-esteem (Dandeneau & Baldwin, 2009), thereby reducing the risk of

252 depression (Orth et al., 2016; Sowislo & Orth, 2013). The game presented 4 images in a 2x2 grid
253 with 3 faces showing a negative emotion and 1 face showing a positive emotion. The
254 participant was allowed 5 seconds to find the positive image and thus increase their score. If
255 the participant responded or if 5 seconds elapsed, a new set of images was shown. The
256 gameplay incentivized quick attention to positive emotions. The difficulty of the game
257 continuously adapted to the participant's competence: incorrect responses increased the
258 frequency of faces with obvious emotions and correct responses increased the frequency of
259 faces with subtle emotions.

260 TreadWill provided an interactive interface to fill the forms commonly used in CBT: *Thought*
261 *record worksheet*, *Core belief worksheet*, *Behavioral experiment worksheet*, *Problem solving*
262 *worksheet*, *Prepare for setback worksheet*, and *Schedule activity worksheet* (Supplementary
263 Table S3). The forms allowed participants to apply the techniques of CBT to their situations and
264 save the information for future reference.

265 Peer and family support in TreadWill

266 Individuals looking for support online might have low social support in real life (Houston et al.,
267 2002). In such cases, online peer-based support has been shown to be effective in reducing
268 depressive symptoms (Griffiths et al., 2012; Tomasino et al., 2017). Keeping this in mind, we
269 designed the *SupportGroup* and *PeerGroup* features in TreadWill to provide a social space
270 where participants could connect with other TreadWill users and potentially help each other in
271 solving their problems. Posts in the *SupportGroup* were visible to all TreadWill participants. The
272 participants could upvote or downvote posts, add comments, and send "thank you" messages
273 to each other. *PeerGroups* were smaller groups of 10 members each, designed such that the
274 posts in a *PeerGroup* were visible only to the members of that *PeerGroup*.

275 We provided the participants an option to invite a family member or a friend as their *buddy*
276 who would receive weekly updates about the participant's activities in TreadWill. We
277 hypothesized that the involvement of the *buddy* would motivate the participant to complete
278 the program. We sent an email to this *buddy* if the participant failed to use TreadWill regularly
279 and requested them to nudge the participant.

280 Content tailoring in TreadWill

281 Content tailoring has the potential to increase adherence to cCBT interventions as participants
282 are more likely to stick with a program if they find the content relatable (Carlbring et al., 2011;
283 Johansson et al., 2012; Meyer et al., 2009). In TreadWill, we implemented tailoring by selecting
284 the examples in the *conversations* based on the participant's occupation (high-school student,
285 college student, or working professional). In addition, we also tailored the *conversations* based
286 on the participant's thoughts, beliefs, and situations in the following way. First, we asked the
287 participant to select relatable intermediate and core beliefs from the Dysfunctional Attitude
288 Scale (Weissman & Beck, 1978), negative automatic thoughts from the Automatic Thoughts
289 Questionnaire (Hollon & Kendall, 1980), and stressful situations from a curated list. Then, we

290 made the simulated virtual patients in the subsequent *conversations* identify with similar
291 beliefs, thoughts, and situations, and the participant's goal was to help the simulated patient
292 using the techniques of CBT learnt in that module.

293 The automated email and SMS notifications received by the users were also tailored according
294 to their preferences (see Methods).

295 Active control version

296 The active control version presented the same CBT content as the experimental version, in the
297 same six modules, but using plain text instead of slides, videos, and conversations. Each module
298 had *Introduction*, *Learn*, and *Discuss* sections, but the *Practice* section was excluded. The
299 content was not tailored according to the participant. The active control version included the
300 CBT forms, but excluded games, *SupportGroup*, *PeerGroup*, and the option to involve a buddy.
301 The participants received only essential email notifications (see [Supplementary Table S1](#) for
302 details of notifications).

303 Participants

304 Recruitment commenced on February 14, 2018, with a planned enrolment of 600 participants.
305 The primary completion date was March 2, 2019, after full enrollment, and the secondary
306 completion date was May 31, 2019. Out of the 5188 individuals who started the registration
307 process for the study, 598 participants completed all the steps and met the study inclusion
308 criteria (2 other participants who did not meet the inclusion criteria were initially included due
309 to a software bug but were excluded when we cross-checked the data during data analysis).
310 The 598 participants were randomly assigned to the three study arms with equal probability
311 (see Methods), resulting in 204 as experimental (EXP), 189 as active control (ACT), and 205 as
312 waitlist control (WL) participants ([Fig. 1](#)). The participants in the three groups were found to be
313 balanced in terms of age, gender, the severity of depressive symptoms, occupation, use of
314 other interventions, motivation for joining, and occurrence of recent traumatic events ([Table 1](#)).
315 However, a gender bias (79% male) was observed because participants in our study were
316 recruited mainly from Indian engineering colleges where the students are predominantly male
317 (*AISHE Final Report, 2018-19*). Also, in India, there is a 56% gender gap in mobile internet usage
318 (*The Mobile Gender Gap Report 2019*).

319 Effectiveness of TreadWill

320 In the primary analysis, we included the participants who completed at least three modules in
321 the experimental group (EXP) or the active control group (ACT). For this analysis, we used the
322 last PHQ-9 and GAD-7 scores submitted by these participants excluding the follow-up
323 questionnaire. Henceforth, we refer to the time of these last scores as the primary endpoint.
324 From the waitlist control group (WL), all users who submitted the questionnaires after the
325 waiting period were included in the analysis.

326 We compared the reductions in the PHQ-9 and GAD-7 scores from the baseline to the primary
327 endpoint between the three groups (Fig. 2A, B; Table 2). The three groups showed significant
328 differences in the reductions in the PHQ-9 score ($H(2) = 8.93$, $p = 0.012$, Kruskal-Wallis test); a
329 post-hoc test with Bonferroni correction revealed that the experimental group showed a larger
330 reduction than the waitlist control group (2.73 versus 1.12, Mann-Whitney $U = 1027$, $n_{EXP} = 22$,
331 $n_{WL} = 139$, $p = 0.039$). Similarly, the three groups showed significant differences in the
332 reductions in the GAD-7 score ($H(2) = 8.02$, $p = 0.018$, Kruskal-Wallis test); a post-hoc test with
333 Bonferroni correction showed a larger reduction in the experimental group than the waitlist
334 control group (3.27 versus 0.89, Mann-Whitney $U = 637.50$, $n_{EXP} = 22$, $n_{WL} = 94$, $p = 0.015$). The
335 differences in PHQ-9 or GAD-7 reductions between the experimental and the active control
336 groups were not significant (PHQ-9: $U = 96$, $p = 0.34$; GAD-7: $U = 52.5$, $p = 0.22$; $n_{EXP} = 22$, $n_{ACT} =$
337 7).

338 We also checked the reduction in the PHQ-9 and the GAD-7 scores for the smaller set of the
339 experimental group participants who completed all six modules (Fig. 2C, D; Table 2); this
340 analysis could not be performed for the active control group because only 1 participant from
341 that group completed all six modules. This analysis also showed that the experimental group
342 had a significantly larger reduction in PHQ-9 scores compared to the waitlist control group (4.20
343 versus 1.12, Mann-Whitney $U = 368.5$, $n_{EXP} = 10$, $n_{WL} = 139$, $p = 0.013$) and GAD-7 scores (3.40
344 versus 0.89, Mann-Whitney $U = 260.5$, $n_{EXP} = 10$, $n_{WL} = 94$, $p = 0.021$). The 11 participants who
345 completed all modules in the experimental and the active control groups did not differ
346 demographically or in the baseline PHQ-9 score from the rest of the participants
347 (Supplementary Table S5).

348 The reductions observed in the PHQ-9 and GAD-7 scores in the experimental and the active
349 control groups at the primary endpoint were maintained at the 90-day follow-up (Fig. 2A, B).
350 Thus, both the full-featured version of TreadWill (experimental) and the plain-text version of
351 TreadWill (active control) were effective in reducing depression-related and anxiety-related
352 symptoms of the participants who completed all or at least 3 modules.

353 We checked if the novel features of the experimental version of TreadWill were able to increase
354 engagement compared to the active control version. Every module was completed by more
355 participants in the experimental version than the active control version (Fig. 3A). The odds of
356 completing at least 3 modules were three times larger for a participant in the experimental
357 group compared to a participant in the active control group (odds ratio = 3.004; $p = 0.011$; 95%
358 confidence interval = [1.247, 7.237]). The experimental group participants used TreadWill for an
359 average of 79.8 minutes and the active control group participants for 26.1 minutes; the
360 difference was statistically significant (Mann-Whitney $U = 10290$, $n_{EXP} = 181$, $n_{ACT} = 159$, $p = 5.8 \times$
361 10^{-6} , Fig. 3B). Thus, the full-featured version of TreadWill had higher engagement and less
362 attrition than the plain-text version.

363 Further, we checked if the level of engagement with TreadWill was related to the reductions in
364 depressive and anxiety symptoms. We found that the reduction in the PHQ-9 score was

365 positively correlated with the number of modules completed (experimental group: Spearman ρ
366 = 0.38, $p = 0.003$, $n = 61$, [Sup. Fig. S3A](#); active control group: $\rho = 0.51$, $p = 6.8 \times 10^{-4}$, $n = 41$, [Sup.](#)
367 [Fig. S3B](#)) and with the total usage time (experimental group: $\rho = 0.39$, $p = 0.002$, $n = 61$, [Sup. Fig.](#)
368 [S3C](#); active control group: $\rho = 0.47$, $p = 0.002$, $n = 41$, [Sup. Fig. S3D](#)). The reduction in the GAD-7
369 score was also moderately correlated with the number of modules completed (experimental
370 group: $\rho = 0.27$, $p = 0.039$, $n = 57$, [Sup. Fig. S4A](#); active control group: $\rho = 0.43$, $p = 0.009$, $n = 37$,
371 [Sup. Fig. S4B](#)) and with the total usage time (experimental group: $\rho = 0.25$, $p = 0.065$, $n = 57$,
372 [Sup. Fig. S4C](#); active control group: $\rho = 0.35$, $p = 0.035$, $n = 37$, [Sup. Fig. S4D](#)).

373 Feedback on the features of TreadWill

374 We programmed TreadWill to present surveys containing 15 questions using a 5-point Likert
375 scale to quantify the participants' feedback on various aspects of TreadWill. For example, one
376 of the questions stated "I found the email reminders helpful", to which the participant
377 responded by selecting one of the following options: "strongly agree", "somewhat agree",
378 "neither agree nor disagree", "somewhat disagree", and "strongly disagree", which were
379 mapped to a score of 2, 1, 0, -1, and -2, respectively (see [Supplementary Table S4](#) for all
380 questions). The surveys were conducted at two times points: after completing three modules
381 and at the end of the intervention.

382 In the experimental group, the first survey was submitted by 22 participants and the second
383 survey by 18 participants who completed at least 3 modules. The participants reported positive
384 feedback on most aspects of TreadWill ([Fig. 4A](#)): mean feedback scores over all questions were
385 significantly greater than zero for both the first survey (1.16 ± 0.12 , $n = 15$ questions, $t = 9.20$, p
386 $= 2.60 \times 10^{-7}$, t-test) and the second survey (1.29 ± 0.10 , $n = 15$ questions, $t = 12.56$, $p = 5.21 \times$
387 10^{-9} , t-test). The scores remained largely consistent between the two surveys (Pearson $r = 0.87$,
388 $p = 2.84 \times 10^{-5}$, $n = 15$). Strongest positive feedback was received for questions related to the
389 ease of English used (1.86 ± 0.10 in the first survey & 1.83 ± 0.12 in the second survey), the
390 relatability of the examples (1.23 ± 0.25 & 1.72 ± 0.13), the ease of using the CBT forms ($1.45 \pm$
391 0.18 & 1.22 ± 0.17), the engaging nature of the conversations (1.36 ± 0.21 & 1.50 ± 0.20), the
392 helpfulness of the *Learning* slides (1.73 ± 0.10 & 1.67 ± 0.14), and the helpfulness of the
393 *Learning* videos (1.55 ± 0.13 & 1.67 ± 0.14). The features with the lowest ratings included the
394 *PeerGroup*, which received weak positive feedback (0.73 ± 0.23 & 0.61 ± 0.28) and the *buddy*
395 feature, which received neutral feedback in both surveys (-0.09 ± 0.22 & 0.39 ± 0.20).

396 In the active control group, only 7 and 5 participants who completed at least 3 modules
397 submitted the first and the second survey, respectively. The survey questions were slightly
398 different in the active control group ([Supplementary Table S4](#)): the first 6 questions judged their
399 opinion on aspects they experienced directly, and the next 9 questions were asked in a
400 prospective manner; for example, "I would prefer to have email reminders". In the first 6
401 questions, the participants reported overall positive feedback ([Fig. 4B](#)). In the 9 prospective
402 questions, they showed interest in having only some of the proposed features, including

403 conversations and game elements. Curiously, many features that the active control group
404 participants thought they would not prefer – including SMS reminders, videos, and slides –
405 were actually found to be useful by the experimental group participants who experienced the
406 features (Fig. 4A, B).

407 No participant reported any adverse events through the contact form on the website.

408 Exploratory analysis: Feedback on the content

409 To check if the content provided was engaging, we provided the experimental group
410 participants the option to provide feedback on the slides, videos, and *conversations* using *like*
411 and *dislike* buttons. The slides, videos, and *conversations* were viewed 467, 205, and 1479
412 numbers of times, respectively, over all modules, of which nearly 17 %, 20 %, and 20 %
413 instances resulted in *likes* or *dislikes* feedback (Fig. 5A, B, C). We found that the feedback
414 included more *likes* than *dislikes* for slides (8.0 ± 2.30 likes versus 0 ± 0 dislikes, Wilcoxon $W =$
415 45 , $n = 10$ slides, $p = 3.9 \times 10^{-3}$; Fig. 5D), videos (7.4 ± 1.51 likes versus 0.60 ± 0.54 dislikes, $W =$
416 15 , $n = 5$ videos, $p = 0.063$; Fig. 5E), and *conversations* (1.88 ± 0.24 likes versus 0.12 ± 0.033
417 dislikes, $W = 6015$, $n = 149$ *conversations*, $p = 1.93 \times 10^{-19}$; Fig. 5F). Participants also had the
418 option to provide descriptive feedback on these elements. The subjective feedback was mostly
419 positive, with participants frequently mentioning that they liked the given examples; one
420 participant mentioned that they would have preferred to type their own answers in
421 *conversations* (instead of choosing from pre-written text options). A word cloud created from
422 the collated subjective feedback showed that the most frequently used words in feedback
423 included “given”, “example”, “liked”, and “idea” (Fig. 5G). TreadWill allowed participants to
424 revisit previously completed *conversations* to refresh their memory – this option was used 17
425 times by the participants.

426 Exploratory analysis: Patterns in participants’ activities

427 TreadWill allowed participants to attach one or more word tags, from a list of 44 tags, to posts in
428 the *SupportGroup*. A word cloud of the tags used during the study revealed the topics most
429 commonly discussed by the participants: “wasting time”, “loneliness”, “guilt”, “self-esteem”, and
430 “trust” (Supplementary Fig. S5A). Next, we analyzed the entries made by the participants in the
431 CBT forms (worksheets) to identify the common themes in their activities and concerns (see
432 Supplementary Table S3 for brief descriptions of the forms). In the *Schedule activity worksheet*,
433 the activities most frequently planned by the participants were related to completing a task,
434 preparing or studying for an exam, exercising, sleeping on time, and waking up early
435 (Supplementary Fig. S5B). The data from all other forms were tagged manually to homogenize
436 the language used; a word cloud revealed that the major reasons for using the forms were “self-
437 esteem”, “shame”, “relationship”, “anxiety”, “failure”, “college”, and “competition”
438 (Supplementary Fig. S5C). We checked the most commonly selected situations, thoughts, and
439 beliefs from the lists presented to the experimental group participants. The most selected
440 situation, thought, and belief were “I am concerned about my career,” “I should be doing

441 *something better,”* and *“If I don’t work very hard, I’ll fail,”* respectively. (See [Supplementary Fig.](#)
442 [S6A, B, C](#) for the top 10 selected situations, thoughts, and beliefs.)

443

444 **Discussion**

445 We have presented the design of an unguided cCBT intervention – TreadWill – aimed at high
446 user-engagement and universal accessibility. A fully remote randomized controlled trial with
447 598 participants was performed to test the effectiveness of TreadWill in reducing depression-
448 related and anxiety-related symptoms. The results of the trial show that the full-featured
449 (experimental) and the plain-text (active control) versions of TreadWill effectively reduced both
450 PHQ-9 and GAD-7 scores compared with the waitlist control group, for the participants who
451 completed at least three modules. Nearly 3 times more participants completed at least three
452 modules in the experimental group than in the active control group. The extra features included
453 in the experimental version increased adherence compared to the active control version, in
454 terms of both the time of engagement and the number of modules completed. The results also
455 show that the number of modules completed was correlated with the reduction in the
456 symptom severity of a participant.

457 Two automated surveys presented during the intervention for taking participant feedback
458 showed that the participants perceived TreadWill as useful and easy to use and found most of
459 the interactive features helpful. Additionally, the feedback provided by the participants using
460 *like* and *dislike* buttons on different elements of modules indicated that participants found the
461 content relatable and useful.

462 We did not require a clinical diagnosis of depression for including participants in the study as
463 our goal was to create an accessible tool catering to both clinical and sub-clinical populations.
464 Given that the prevalence of sub-clinical depression, defined as a score in the range 5-9 in PHQ-
465 9, is fairly high at 15-20% (Khaled, 2019; Kroenke et al., 2001, 2009), an unguided intervention
466 can be immensely beneficial. We used only self-reported assessments for measuring symptom
467 severity. While self-reported assessments have their drawbacks (Sato & Kawahara, 2011), it was
468 essential given the pragmatic nature of the study with an unguided intervention. For the same
469 reason, we also allowed participants undergoing other treatments (7% of our participants, see
470 [Table 1](#)). We used only one questionnaire each for assessing depression and anxiety symptom
471 severity. This decision was made keeping in mind that filling long questionnaires online is not a
472 pleasant experience for the users and might increase dropout (Morriss et al., 2021). Also, while
473 including multiple questionnaires for assessing the same disorder might improve validity, it also
474 increases the risk of getting false-positive results by chance.

475 Adherence rates in cCBT interventions

476 MoodGYM, one of the most popular cCBT intervention has reported moderate adherence rates
477 of about 7% (Christensen et al., 2006) and 11.1% (Neil et al., 2009) and full adherence rates of

478 2.8% (Neil et al., 2009), 10% (Powell et al., 2013), and 15.8% (Farrer et al., 2011). Deprexis,
479 another well-evaluated intervention, reported a full adherence rate of 7.5% in a fully guided
480 evaluation (Meyer et al., 2009). The high adherence rates observed in the trial settings often fail
481 to transfer to the real world (Fleming et al., 2018). In real-world studies, adherence can be very
482 low: 5.6% in Lara et al. (Lara et al., 2014), 13.11% in Morgan et al. (Morgan et al., 2017), and 5%
483 in March et al. (March et al., 2021). In a fully remote trial of an app-based intervention, Areal
484 et al. (Areal et al., 2016) reported that 57.9% of the participants did not even download their
485 assigned apps. Similarly, in another study involving no human contact, Morriss et al. (Morriss et
486 al., 2021) reported that only 57.3% of participants randomized to the experimental group
487 signed up for the intervention and only 42.5% accessed it more than once. Morriss et al.
488 (Morriss et al., 2021) further reported an attrition rate of 84.9% at 3-week follow-up with the
489 attrition rate increasing at later follow-up points. In another recent study, Oehler et al. (Oehler
490 et al., 2021) observed that the minimal dose was received by only 2.10% of the participants for
491 the unguided version of iFightDepression. The adherence rate observed for TreadWill, 12.1%
492 for moderate usage and 5.5% for full completion, is comparable to these real-world studies. At
493 this adherence level, TreadWill can benefit a significant number of people from the general
494 population as a fully automated and scalable intervention.

495 The 12.1% adherence rate for moderate usage was observed in our study despite additional
496 challenges compared to other studies. Every step in our study, from participant recruitment to
497 assessment, was fully automated; the lack of human contact is known to affect the
498 commitment of the participants (Morriss et al., 2021). Further, it has been reported that male
499 gender and young age significantly increase the chance of dropout (Karyotaki et al., 2015). The
500 average age of our participant group was 23.5 years, and 79% were male, which could have
501 contributed to the dropout. Our participants were non-native English speakers in an LMIC (the
502 intervention was developed in English to ensure future scalability in other countries). Contrary
503 to the practice of giving money or gift cards to participants (Areal et al., 2016; Clarke et al.,
504 2009; Pratap et al., 2018; Schure et al., 2019), we did not reward participants for submitting
505 assessments or for participation. In several studies (Areal et al., 2016; Clarke et al., 2009;
506 Pratap et al., 2018; Schure et al., 2019), the participants were paid even after submitting the
507 baseline assessments. The practice of paying participants is likely to influence adherence to the
508 intervention due to the rule of reciprocity (Cialdini, 1987) and to influence the assessment
509 responses. Participants getting paid might feel that they owe it to the researchers to use the
510 program and try to give answers in the assessments they think the researchers expect. Not
511 giving a reward also supports our pragmatic trial design, as in the real world paying participants
512 to use the intervention will be unsustainable.

513 Implications

514 Our study shows that even in low-resource settings, cCBT based interventions can help without
515 any expert support. This implication is immensely encouraging as the number of mental health
516 professionals is extremely low in India (Patel et al., 2016; but see Garg et al., 2019). Our study

517 establishes TreadWill as a potential population-level intervention. This is among the largest
518 studies conducted in India on digital mental health (Kanuri et al., 2020; Mehrotra et al., 2018;
519 Rodriguez-Villa et al., 2021; Srivastava et al., 2020). Our study is also the first fully online trial
520 conducted in India and provides a template for conducting online trials for other mental health
521 conditions in the country. Future work should focus on strategies like — using gamification,
522 using serious games, or using a chatbot to build therapeutic alliance — to improve adherence
523 to self-help interventions.

524

525 **Data availability**

526 The de-identified data analyzed in the current study are available from the corresponding
527 author on reasonable request.

528

529 **Acknowledgements**

530 We thank Romit Chaudhary, Divya Chauhan, Vinay Agarwal, Sahars Kumar, Pearl Sikka, Rahul
531 Gupta, Nikhil Vanjani, and Sandarsh Pandey for their help in development of TreadWill. We
532 thank Pranjul Singh, Aditya Patil, and Pearl Sikka for their help in developing the videos of
533 TreadWill. We thank Braj Bhushan, Shoukkathali K, Rita Singh, Akanksha Awasthy, and Gitanjali
534 Narayanan for helpful discussions. We thank Dr. Shikha Jain, Mrityunjay Bhargava, Pratibha
535 Mishra, Jagriti Agnihotri, Swastika Tandon, Akash A., Harsh Agarwal and IIT Kanpur media cell
536 for promoting the visibility of the trial. We thank Silky Gupta and Aarush Mohit Mittal for help
537 with data analysis and feedback on the manuscript. We thank members of the Lab of Neural
538 Systems for testing the beta version of TreadWill and giving feedback on the content and user
539 experience. This work was supported by the Cognitive Science Research Initiative of the
540 Department of Science & Technology [grant number DST/CSRI/2018/102]. The funding agency
541 had no role in the design or implementation of the study and in the interpretation of the
542 results.

543

544 **Author contributions**

545 AG and NG conceptualized the project; AG, RJC, SW, AB, and NG designed the research; AG,
546 RJC, SW, PS, and KRK developed the intervention; AG, AB, and NG recruited participants; AG
547 and NG analyzed data; AG and NG wrote the paper with inputs from all co-authors.

548

549 **Conflict of interest**

550 The authors declare no conflict of interest.

References

- All India Survey on Higher Education, 2018-19.* (2019). Department of Higher Education.
<https://aishe.gov.in/aishe/gotoAisheReports>
- Andersson, G., & Carlbring, P. (2021). Cognitive behavioral therapy delivered using the internet. In *Handbook of cognitive behavioral therapy: Applications (Vol. 2)*. (pp. 607–631). American Psychological Association. <https://doi.org/10.1037/0000219-019>
- Andersson, G., Carlbring, P., Berger, T., Almlöv, J., & Cuijpers, P. (2009). What Makes Internet Therapy Work? *Cognitive Behaviour Therapy*, *38*(sup1), 55–60.
<https://doi.org/10.1080/16506070902916400>
- Andrade, L. H., Alonso, J., Mneimneh, Z., Wells, J. E., Al-Hamzawi, A., Borges, G., Bromet, E., Bruffaerts, R., de Girolamo, G., de Graaf, R., Florescu, S., Gureje, O., Hinkov, H. R., Hu, C., Huang, Y., Hwang, I., Jin, R., Karam, E. G., Kovess-Masfety, V., ... Kessler, R. C. (2014). Barriers to mental health treatment: Results from the WHO World Mental Health surveys. *Psychological Medicine*, *44*(6), 1303–1317. <https://doi.org/10.1017/S0033291713001943>
- Andrews, G., Basu, A., Cuijpers, P., Craske, M. G., McEvoy, P., English, C. L., & Newby, J. M. (2018). Computer therapy for the anxiety and depression disorders is effective, acceptable and practical health care: An updated meta-analysis. *Journal of Anxiety Disorders*, *55*, 70–78.
<https://doi.org/10.1016/j.janxdis.2018.01.001>
- Arean, P. A., Hallgren, K. A., Jordan, J. T., Gazzaley, A., Atkins, D. C., Heagerty, P. J., & Anguera, J. A. (2016). The Use and Effectiveness of Mobile Apps for Depression: Results From a Fully Remote Clinical Trial. *Journal of Medical Internet Research*, *18*(12), e330.
<https://doi.org/10.2196/jmir.6482>
- Beck, J. S. (2011). *Cognitive therapy: Basics and beyond (2nd edition)* (2nd edition). New York: Guilford press.
- Berger, T., Hämmerli, K., Gubser, N., Andersson, G., & Caspar, F. (2011). Internet-Based Treatment of Depression: A Randomized Controlled Trial Comparing Guided with Unguided Self-Help. *Cognitive Behaviour Therapy*, *40*(4), 251–266. <https://doi.org/10.1080/16506073.2011.616531>
- Bruckner, T. A., Scheffler, R. M., Shen, G., Yoon, J., Chisholm, D., Morris, J., Fulton, B. D., Dal Poz, M. R., & Saxena, S. (2011). The mental health workforce gap in low- and middle-income countries: A needs-based approach. *Bulletin of the World Health Organization*, *89*(3), 184–194.
<https://doi.org/10.2471/BLT.10.082784>
- Carlbring, P., Andersson, G., Cuijpers, P., Riper, H., & Hedman-Lagerlöf, E. (2018). Internet-based vs. Face-to-face cognitive behavior therapy for psychiatric and somatic disorders: An updated systematic review and meta-analysis. *Cognitive Behaviour Therapy*, *47*(1), 1–18.
<https://doi.org/10.1080/16506073.2017.1401115>
- Carlbring, P., Maurin, L., Törngren, C., Linna, E., Eriksson, T., Sparthán, E., Stråat, M., Marquez von Hage, C., Bergman-Nordgren, L., & Andersson, G. (2011). Individually-tailored, Internet-based treatment for anxiety disorders: A randomized controlled trial. *Behaviour Research and Therapy*, *49*(1), 18–24. <https://doi.org/10.1016/j.brat.2010.10.002>
- Christensen, H., Griffiths, K., Groves, C., & Korten, A. (2006). Free Range users and One Hit Wonders: Community Users of an Internet-Based Cognitive Behaviour Therapy Program. *Australian & New Zealand Journal of Psychiatry*, *40*(1), 59–62. <https://doi.org/10.1080/j.1440-1614.2006.01743.x>
- Christensen, H., Griffiths, K. M., & Jorm, A. F. (2004). Delivering interventions for depression by using the internet: Randomised controlled trial. *British Medical Journal*, *328*(7434), 265–268.
<https://doi.org/10.1136/bmj.37945.566632.ee>
- Cialdini, R. B. (1987). *Influence*. Port Harcourt: A. Michel.

- Clarke, G., Kelleher, C., Hornbrook, M., DeBar, L., Dickerson, J., & Gullion, C. (2009). Randomized Effectiveness Trial of an Internet, Pure Self-Help, Cognitive Behavioral Intervention for Depressive Symptoms in Young Adults. *Cognitive Behaviour Therapy*, 38(4), 222–234. <https://doi.org/10.1080/16506070802675353>
- Cuijpers, P., Noma, H., Karyotaki, E., Cipriani, A., & Furukawa, T. A. (2019). Effectiveness and Acceptability of Cognitive Behavior Therapy Delivery Formats in Adults With Depression A Network Meta-analysis. *JAMA Psychiatry*, 76(7), 700–707. <https://doi.org/10.1001/jamapsychiatry.2019.0268>
- Dandeneau, S. D., & Baldwin, M. W. (2009). The buffering effects of rejection-inhibiting attentional training on social and performance threat among adult students. *Contemporary Educational Psychology*, 34(1), 42–50. <https://doi.org/10.1016/j.cedpsych.2008.05.004>
- de Graaf, L. E., Gerhards, S. A. H., Arntz, A., Riper, H., Metsemakers, J. F. M., Evers, S. M. A. A., Severens, J. L., Widdershoven, G., & Huibers, M. J. H. (2009). Clinical effectiveness of online computerised cognitive-behavioural therapy without support for depression in primary care: Randomised trial. *British Journal of Psychiatry*, 195(1), 73–80. <https://doi.org/10.1192/bjp.bp.108.054429>
- Farrer, L., Christensen, H., Griffiths, K. M., & Mackinnon, A. (2011). Internet-based CBT for depression with and without telephone tracking in a national helpline: Randomised controlled trial. *PLoS ONE*, 6(11). <https://doi.org/10.1371/journal.pone.0028099>
- Fleming, T., Bavin, L., Lucassen, M., Stasiak, K., Hopkins, S., & Merry, S. (2018). Beyond the Trial: Systematic Review of Real-World Uptake and Engagement With Digital Self-Help Interventions for Depression, Low Mood, or Anxiety. *Journal of Medical Internet Research*, 20(6), e199. <https://doi.org/10.2196/jmir.9275>
- Fu, Z., Burger, H., Arjadi, R., & Bockting, C. L. H. (2020). Effectiveness of digital psychological interventions for mental health problems in low-income and middle-income countries: A systematic review and meta-analysis. *The Lancet Psychiatry*, 7(10), 851–864. [https://doi.org/10.1016/S2215-0366\(20\)30256-X](https://doi.org/10.1016/S2215-0366(20)30256-X)
- Garg, K., Kumar, C. N., & Chandra, P. S. (2019). Number of psychiatrists in India: Baby steps forward, but a long way to go. In *Indian Journal of Psychiatry* (Vol. 61, Issue 1, pp. 104–105). Wolters Kluwer Medknow Publications. https://doi.org/10.4103/psychiatry.IndianJPsychiatry_7_18
- Garrido, S., Millington, C., Cheers, D., Boydell, K., Schubert, E., Meade, T., & Nguyen, Q. V. (2019). What Works and What Doesn't Work? A Systematic Review of Digital Mental Health Interventions for Depression and Anxiety in Young People. In *Frontiers in Psychiatry* (Vol. 10). Frontiers Media S.A. <https://doi.org/10.3389/fpsy.2019.00759>
- Gilbody, S., Brabyn, S., Lovell, K., Kessler, D., Devlin, T., Smith, L., Araya, R., Barkham, M., Bower, P., Cooper, C., Knowles, S., Littlewood, E., Richards, D. A., Tallon, D., White, D., & Worthy, G. (2017). Telephone-supported computerised cognitive-behavioural therapy: REEACT-2 large-scale pragmatic randomised controlled trial. *British Journal of Psychiatry*, 210(5), 362–367. <https://doi.org/10.1192/bjp.bp.116.192435>
- Gilbody, S., Littlewood, E., Hewitt, C., Brierley, G., Tharmanathan, P., Araya, R., Barkham, M., Bower, P., Cooper, C., Gask, L., Kessler, D., Lester, H., Lovell, K., Parry, G., Richards, D. A., Andersen, P., Brabyn, S., Knowles, S., Shepherd, C., ... White, D. (2015). Computerised cognitive behaviour therapy (cCBT) as treatment for depression in primary care (REEACT trial): Large scale pragmatic randomised controlled trial. *BMJ*, 351, h5627. <https://doi.org/10.1136/bmj.h5627>
- Griffiths, K. M., Mackinnon, A. J., Crisp, D. A., Christensen, H., Bennett, K., & Farrer, L. (2012). The Effectiveness of an Online Support Group for Members of the Community with Depression: A Randomised Controlled Trial. *PLoS ONE*, 7(12), e53244. <https://doi.org/10.1371/journal.pone.0053244>

- Gupta, S. C., Anand, R., & Trivedi, J. K. (1983). Development of a suicidal intent questionnaire. *Indian Journal of Psychiatry*, 25(1), 57–62.
- Gururaj, G., Varghese, M., Benegal, V., Rao, G., Pathak, K., Singh, L., Mehta, R., Ram, D., Shibukumar, T., Kokane, A., Lenin Singh, R., Chavan, B., Sharma, P., Ramasubramanian, C., Dalal, P., Saha, P., Deuri, S., Giri, A., Kavishvar, A., ... NMHS collaborators group. (2016). National Mental Health Survey of India, 2015-16: Prevalence, patterns and outcomes. *Bengaluru, National Institute of Mental Health and Neuro Sciences, NIMHANS Publication No. 129, 2016.*, 43(4), 509.
- Harrer, M., Adam, S. H., Baumeister, H., Cuijpers, P., Karyotaki, E., Auerbach, R. P., Kessler, R. C., Bruffaerts, R., Berking, M., & Ebert, D. D. (2019). Internet interventions for mental health in university students: A systematic review and meta-analysis. *International Journal of Methods in Psychiatric Research*, 28(2), e1759. <https://doi.org/10.1002/mpr.1759>
- Hollon, S. D., & Kendall, P. C. (1980). *Cognitive Self-Statements in Depression: Development of an Automatic Thoughts Questionnaire*. 4(4), 383–395.
- Houston, T. K., Lisa Cooper, M. A., & Daniel Ford, M. E. (2002). Internet Support Groups for Depression: A 1-Year Prospective Cohort Study. *Article Am J Psychiatry*, 15912(December), 2062–2068.
- James, S. L., Abate, D., Abate, K. H., Abay, S. M., Abbafati, C., Abbasi, N., Abbastabar, H., Abd-Allah, F., Abdela, J., Abdelalim, A., Abdollahpour, I., Abdulkader, R. S., Abebe, Z., Abera, S. F., Abil, O. Z., Abraha, H. N., Abu-Raddad, L. J., Abu-Rmeileh, N. M. E., Accrombessi, M. M. K., ... Murray, C. J. L. (2018). Global, regional, and national incidence, prevalence, and years lived with disability for 354 diseases and injuries for 195 countries and territories, 1990–2017: A systematic analysis for the Global Burden of Disease Study 2017. *The Lancet*, 392(10159), 1789–1858. [https://doi.org/10.1016/S0140-6736\(18\)32279-7](https://doi.org/10.1016/S0140-6736(18)32279-7)
- Johansson, R., & Andersson, G. (2012). Internet-based psychological treatments for depression. *Expert Review of Neurotherapeutics*, 12(7), 861–870. <https://doi.org/10.1586/ern.12.63>
- Johansson, R., Sjöberg, E., Sjögren, M., Johnsson, E., Carlbring, P., Andersson, T., Rousseau, A., & Andersson, G. (2012). Tailored vs. Standardized internet-based cognitive behavior therapy for depression and comorbid symptoms: A randomized controlled trial. *PloS One*, 7(5), e36905. <https://doi.org/10.1371/journal.pone.0036905>
- Kanuri, N., Arora, P., Talluru, S., Colaco, B., Dutta, R., Rawat, A., Taylor, B. C., Manjula, M., & Newman, M. G. (2020). Examining the initial usability, acceptability and feasibility of a digital mental health intervention for college students in India. *International Journal of Psychology*, 55(4), 657–673. <https://doi.org/10.1002/ijop.12640>
- Karyotaki, E., Efthimiou, O., Miguel, C., BERPohl, F. M. G., Furukawa, T. A., Cuijpers, P., Riper, H., Patel, V., Mira, A., Gemmil, A. W., Yeung, A. S., Lange, A., Williams, A. D., Mackinnon, A., Geraedts, A., Van Straten, A., Meyer, B., Björkelund, C., Knaevelsrud, C., ... Forsell, Y. (2021). Internet-Based Cognitive Behavioral Therapy for Depression: A Systematic Review and Individual Patient Data Network Meta-analysis. *JAMA Psychiatry*, 78(4), 361–371. <https://doi.org/10.1001/jamapsychiatry.2020.4364>
- Karyotaki, E., Kleiboer, A., Smit, F., Turner, D. T., Pastor, A. M., Andersson, G., Berger, T., Botella, C., Breton, J. M., Carlbring, P., Christensen, H., De Graaf, E., Griffiths, K., Donker, T., Farrer, L., Huibers, M. J. H., Lenndin, J., Mackinnon, A., Meyer, B., ... Cuijpers, P. (2015). Predictors of treatment dropout in self-guided web-based interventions for depression: An “individual patient data” meta-analysis. *Psychological Medicine*, 45(13), 2717–2726. <https://doi.org/10.1017/S0033291715000665>
- Karyotaki, E., Riper, H., Twisk, J., Hoogendoorn, A., Kleiboer, A., Mira, A., Mackinnon, A., Meyer, B., Botella, C., Littlewood, E., Andersson, G., Christensen, H., Klein, J. P., Schröder, J., Bretón-López, J., Scheider, J., Griffiths, K., Farrer, L., Huibers, M. J. H., ... Cuijpers, P. (2017). Efficacy of Self-

- guided Internet-Based Cognitive Behavioral Therapy in the Treatment of Depressive Symptoms. *JAMA Psychiatry*, 74(4), 351. <https://doi.org/10.1001/jamapsychiatry.2017.0044>
- Khaled, S. M. (2019). Prevalence and potential determinants of subthreshold and major depression in the general population of Qatar. *Journal of Affective Disorders*, 252(February), 382–393. <https://doi.org/10.1016/j.jad.2019.04.056>
- Klein, J. P., Berger, T., Schröder, J., Späth, C., Meyer, B., Caspar, F., Lutz, W., Arndt, A., Greiner, W., Gräfe, V., Hautzinger, M., Fuhr, K., Rose, M., Nolte, S., Löwe, B., Andersson, G., Vettorazzi, E., Moritz, S., & Hohagen, F. (2016). Effects of a psychological internet intervention in the treatment of mild to moderate depressive symptoms: Results of the evident study, a randomized controlled trial. *Psychotherapy and Psychosomatics*, 85(4), 218–228. <https://doi.org/10.1159/000445355>
- Köhnen, M., Dreier, M., Seeralan, T., Kriston, L., Härter, M., Baumeister, H., & Liebherz, S. (2021). Evidence on Technology-Based Psychological Interventions in Diagnosed Depression: Systematic Review. *JMIR Mental Health*, 8(2), e21700. <https://doi.org/10.2196/21700>
- Kroenke, K., Spitzer, R. L., & Williams, J. B. W. (2001). The PHQ-9: Validity of a brief depression severity measure. *Journal of General Internal Medicine*, 16(9), 606–613. <https://doi.org/10.1046/j.1525-1497.2001.016009606.x>
- Kroenke, K., Strine, T. W., Spitzer, R. L., Williams, J. B. W., Berry, J. T., & Mokdad, A. H. (2009). The PHQ-8 as a measure of current depression in the general population. *Journal of Affective Disorders*, 114(1–3), 163–173. <https://doi.org/10.1016/j.jad.2008.06.026>
- Lara, M. A., Tiburcio, M., Aguilar Abrego, A., & Sánchez-Solís, A. (2014). A four-year experience with a Web-based self-help intervention for depressive symptoms in Mexico. *Revista Panamericana de Salud Publica = Pan American Journal of Public Health*, 35(5–6), 399–406.
- Lehtimäki, S., Martić, J., Wahl, B., Foster, K. T., & Schwalbe, N. (2021). Evidence on Digital Mental Health Interventions for Adolescents and Young People: Systematic Overview. *JMIR Mental Health*, 8(4), e25847. <https://doi.org/10.2196/25847>
- March, S., Batterham, P. J., Rowe, A., Donovan, C., Cleave, A. L., & Spence, S. H. (2021). Trajectories of Change in an Open-access Internet-Based Cognitive Behavior Program for Childhood and Adolescent Anxiety: Open Trial. *JMIR Mental Health*, 8(6), e27981. <https://doi.org/10.2196/27981>
- Martínez, P., Rojas, G., Martínez, V., Lara, M. A., & Pérez, J. C. (2018). Internet-based interventions for the prevention and treatment of depression in people living in developing countries: A systematic review. *Journal of Affective Disorders*, 234, 193–200. <https://doi.org/10.1016/j.jad.2018.02.079>
- Mehrotra, S., Sudhir, P., Rao, G., Thirhalli, J., & Srikanth, T. (2018). Development and Pilot Testing of an Internet-Based Self-Help Intervention for Depression for Indian Users. *Behavioral Sciences*, 8(4), 36. <https://doi.org/10.3390/bs8040036>
- Meyer, B., Berger, T., Caspar, F., Beevers, C. G., Andersson, G., & Weiss, M. (2009). Effectiveness of a Novel Integrative Online Treatment for Depression (Deprexis): Randomized Controlled Trial. *Journal of Medical Internet Research*, 11(2), e15. <https://doi.org/10.2196/jmir.1151>
- Meyer, B., Bierbrodt, J., Schröder, J., Berger, T., Beevers, C. G., Weiss, M., Jacob, G., Späth, C., Andersson, G., Lutz, W., Hautzinger, M., Löwe, B., Rose, M., Hohagen, F., Caspar, F., Greiner, W., Moritz, S., & Klein, J. P. (2015). Effects of an Internet intervention (Deprexis) on severe depression symptoms: Randomized controlled trial. *Internet Interventions*, 2(1), 48–59. <https://doi.org/10.1016/j.invent.2014.12.003>
- Mira, A., Bretón-López, J., García-Palacios, A., Quero, S., Baños, R. M., & Botella, C. (2017). An Internet-based program for depressive symptoms using human and automated support: A randomized controlled trial. In *Neuropsychiatric Disease and Treatment: Vol. Volume 13* (pp. 987–1006). <https://doi.org/10.2147/NDT.S130994>

- Morgan, C., Mason, E., Newby, J. M., Mahoney, A. E. J., Hobbs, M. J., McAloon, J., & Andrews, G. (2017). The effectiveness of unguided internet cognitive behavioural therapy for mixed anxiety and depression. *Internet Interventions, 10*, 47–53. <https://doi.org/10.1016/j.invent.2017.10.003>
- Moritz, S., Schilling, L., Hauschildt, M., Schröder, J., & Treszl, A. (2012). A randomized controlled trial of internet-based therapy in depression. *Behaviour Research and Therapy, 50*(7–8), 513–521. <https://doi.org/10.1016/j.brat.2012.04.006>
- Morriss, R., Kaylor-Hughes, C., Rawsthorne, M., Coulson, N., Simpson, S., Guo, B., James, M., Lathe, J., Moran, P., Tata, L., & Williams, L. (2021). A direct to public peer support programme (Big White Wall) versus web-based information to aid self-management of depression and anxiety (The REBOOT study): Results and challenges of an automated randomised controlled trial. (Preprint). *Journal of Medical Internet Research*. <https://doi.org/10.2196/23487>
- Neil, A. L., Batterham, P., Christensen, H., Bennett, K., & Griffiths, K. M. (2009). Predictors of Adherence by Adolescents to a Cognitive Behavior Therapy Website in School and Community-Based Settings. *Journal of Medical Internet Research, 11*(1), e6. <https://doi.org/10.2196/jmir.1050>
- Nordin, S., Carlbring, P., Cuijpers, P., & Andersson, G. (2010). Expanding the Limits of Bibliotherapy for Panic Disorder: Randomized Trial of Self-Help Without Support but With a Clear Deadline. *Behavior Therapy, 41*(3), 267–276. <https://doi.org/10.1016/j.beth.2009.06.001>
- Oehler, C., Scholze, K., Paredes, H. R. D., & Sander, C. (2021). *Unguided iCBT for depression during the COVID-19 pandemic—Intervention usage and symptom change in a convenience sample compared to guided use in regular care Table of Contents*.
- Orth, U., Robins, R. W., Meier, L. L., & Conger, R. D. (2016). Refining the vulnerability model of low self-esteem and depression: Disentangling the effects of genuine self-esteem and narcissism. *Journal of Personality and Social Psychology, 110*(1), 133–149. <https://doi.org/10.1037/pspp0000038>
- Patel, V., Saxena, S., Lund, C., Thornicroft, G., Baingana, F., Bolton, P., Chisholm, D., Collins, P. Y., Cooper, J. L., Eaton, J., Herrman, H., Herzallah, M. M., Huang, Y., Jordans, M. J. D., Kleinman, A., Medina-Mora, M. E., Morgan, E., Niaz, U., Omigbodun, O., ... Unützer, J. (2018). The Lancet Commission on global mental health and sustainable development. *The Lancet, 392*(10157), 1553–1598. [https://doi.org/10.1016/S0140-6736\(18\)31612-X](https://doi.org/10.1016/S0140-6736(18)31612-X)
- Patel, V., Xiao, S., Chen, H., Hanna, F., Jotheeswaran, A. T., Luo, D., Parikh, R., Sharma, E., Usmani, S., Yu, Y., Druss, B. G., & Saxena, S. (2016). The magnitude of and health system responses to the mental health treatment gap in adults in India and China. *The Lancet, 388*(10063), 3074–3084. [https://doi.org/10.1016/S0140-6736\(16\)00160-4](https://doi.org/10.1016/S0140-6736(16)00160-4)
- Phillips, R., Schneider, J., Molosankwe, I., Leese, M., Foroushani, P. S., Grime, P., McCrone, P., Morriss, R., & Thornicroft, G. (2014). Randomized controlled trial of computerized cognitive behavioural therapy for depressive symptoms: Effectiveness and costs of a workplace intervention. *Psychological Medicine, 44*(4), 741–752. <https://doi.org/10.1017/S0033291713001323>
- Powell, J., Hamborg, T., Stallard, N., Burls, A., Mcsorley, J., Bennett, K., Griffiths, K. M., & Christensen, H. (2013). Effectiveness of a web-based cognitive-behavioral tool to improve mental well-being in the general population: Randomized controlled trial. *Journal of Medical Internet Research, 15*(1). <https://doi.org/10.2196/jmir.2240>
- Pratap, A., Renn, B. N., Volponi, J., Mooney, S. D., Gazzaley, A., Arean, P. A., & Anguera, J. A. (2018). Using Mobile Apps to Assess and Treat Depression in Hispanic and Latino Populations: Fully Remote Randomized Clinical Trial. *Journal of Medical Internet Research, 20*(8), e10130. <https://doi.org/10.2196/10130>
- Rodriguez-Villa, E., Rozatkar, A. R., Kumar, M., Patel, V., Bondre, A., Naik, S. S., Dutt, S., Mehta, U. M., Nagendra, S., Tugnawat, D., Shrivastava, R., Raghuram, H., Khan, A., Naslund, J. A., Gupta, S., Bhan, A., Thirthall, J., Chand, P. K., Lakhtakia, T., ... Torous, J. (2021). Cross cultural and global uses of a digital mental health app: Results of focus groups with clinicians, patients and family

- members in India and the United States. *Global Mental Health*, 8, e30.
<https://doi.org/10.1017/gmh.2021.28>
- Sato, H., & ichiro Kawahara, J. (2011). Selective bias in retrospective self-reports of negative mood states. *Anxiety, Stress and Coping*, 24(4), 359–367.
<https://doi.org/10.1080/10615806.2010.543132>
- Saxena, S., Thornicroft, G., Knapp, M., & Whiteford, H. (2007). Resources for mental health: Scarcity, inequity, and inefficiency. *The Lancet*, 370(9590), 878–889. [https://doi.org/10.1016/S0140-6736\(07\)61239-2](https://doi.org/10.1016/S0140-6736(07)61239-2)
- Schure, M. B., Lindow, J. C., Greist, J. H., Nakonezny, P. A., Bailey, S. J., Bryan, W. L., & Byerly, M. J. (2019). Use of a Fully Automated Internet-Based Cognitive Behavior Therapy Intervention in a Community Population of Adults With Depression Symptoms: Randomized Controlled Trial. *Journal of Medical Internet Research*, 21(11), e14754. <https://doi.org/10.2196/14754>
- Selmi, P. M., Klein, M. H., Greist, J. H., Johnson, J. H., & Harris, W. G. (1982). An investigation of computer-assisted cognitive-behavior therapy in the treatment of depression. *Behavior Research Methods & Instrumentation*, 14(2), 181–185. <https://doi.org/10.3758/BF03202150>
- Sowislo, J. F., & Orth, U. (2013). Does low self-esteem predict depression and anxiety? A meta-analysis of longitudinal studies. *Psychological Bulletin*, 139(1), 213–240.
<https://doi.org/10.1037/a0028931>
- Spek, V., Nyklíček, I., Smits, N., Cuijpers, P., Riper, H., Keyzer, J., & Pop, V. (2007). Internet-based cognitive behavioural therapy for subthreshold depression in people over 50 years old: A randomized controlled clinical trial. *Psychological Medicine*, 37(12), 1797–1806.
<https://doi.org/10.1017/S0033291707000542>
- Spitzer, R. L., Kroenke, K., Williams, J. B. W., & Löwe, B. (2006). A Brief Measure for Assessing Generalized Anxiety Disorder. *Archives of Internal Medicine*, 166(10), 1092.
<https://doi.org/10.1001/archinte.166.10.1092>
- Srivastava, P., Mehta, M., Sagar, R., & Ambekar, A. (2020). Smartteen- a computer assisted cognitive behavior therapy for Indian adolescents with depression- a pilot study. *Asian Journal of Psychiatry*, 50, 101970. <https://doi.org/10.1016/j.ajp.2020.101970>
- The Mobile Gender Gap Report 2019*. (2019). GSMA.
<https://www.gsma.com/mobilefordevelopment/resources/mobile-gender-gap-report-2019/>
- Tomasino, K. N., Lattie, E. G., Ho, J., Palac, H. L., Kaiser, S. M., & Mohr, D. C. (2017). Harnessing Peer Support in an Online Intervention for Older Adults with Depression. *The American Journal of Geriatric Psychiatry*, 25(10), 1109–1119. <https://doi.org/10.1016/j.jagp.2017.04.015>
- Twomey, C., O'Reilly, G., Bültmann, O., & Meyer, B. (2020). Effectiveness of a tailored, integrative Internet intervention (deprexis) for depression: Updated meta-analysis. *PLoS ONE*, 15(1), e0228100. <https://doi.org/10.1371/journal.pone.0228100>
- Välimäki, M., Anttila, K., Anttila, M., & Lahti, M. (2017). Web-based interventions supporting adolescents and young people with depressive symptoms: Systematic review and meta-analysis. *JMIR MHealth and UHealth*, 5(12), 1–16. <https://doi.org/10.2196/mhealth.8624>
- Wang, P. S., Aguilar-Gaxiola, S., Alonso, J., Angermeyer, M. C., Borges, G., Bromet, E. J., Bruffaerts, R., de Girolamo, G., de Graaf, R., Gureje, O., Haro, J. M., Karam, E. G., Kessler, R. C., Kovess, V., Lane, M. C., Lee, S., Levinson, D., Ono, Y., Petukhova, M., ... Wells, J. E. (2007). Use of mental health services for anxiety, mood, and substance disorders in 17 countries in the WHO world mental health surveys. *The Lancet*, 370(9590), 841–850. [https://doi.org/10.1016/S0140-6736\(07\)61414-7](https://doi.org/10.1016/S0140-6736(07)61414-7)
- Weissman, A. N., & Beck, A. T. (1978). Development and Validation of the Dysfunctional Attitude Scale: A Preliminary Investigation. *Annual Meeting of the American Educational Research Association*, 1–33.

Weizenbaum, J. (1966). ELIZA — a computer program for the study of natural language communication between man and machine. *Communications of the ACM*, 9(1), 36–45.

<https://doi.org/10.1145/357980.357991>

Wright, J. H., Owen, J. J., Richards, D., Eells, T. D., Richardson, T., Brown, G. K., Barrett, M., Rasku, M. A., Polser, G., & Thase, M. E. (2019). Computer-assisted cognitive-behavior therapy for depression: A systematic review and meta-analysis. *Journal of Clinical Psychiatry*, 80(2), 0–0.

<https://doi.org/10.4088/JCP.18r12188>

Table 1

Group (n)	Experimental (n=204)	Active Control (n=189)	Waitlist Control (n=205)	All (n=598)
Age, Mean (s.e.)	23.76 (0.30)	23.42 (0.28)	23.48 (0.29)	23.56 (0.17)
Gender, (male, female)	(160, 44)	(151, 38)	(167, 38)	(478, 120)
Traumatic event or death of a loved one, (Yes, No)	(22, 182)	(18, 171)	(20, 185)	(60, 538)
Joining for help, (Yes, No)	(180, 24)	(157, 32)	(180, 25)	(517, 81)
Secondary help, (None, Counselling, Medication, Both)	(185, 5, 12, 2)	(178, 4, 4, 3)	(193, 4, 6, 2)	(556, 13, 22, 7)
Occupation, (High School Student, Between school and college, College student, Coaching after college, Working professionals, Self employed, Freelancers, Volunteers)	(1, 8, 113, 33, 39, 7, 2, 1)	(2, 4, 103, 33, 40, 4, 3, 0)	(4, 6, 120, 30, 37, 4, 2, 2)	(7, 18, 336, 96, 116, 15, 7, 3)
PHQ-9, Mean (s.e.)	10.76 (0.26)	10.81 (0.25)	10.42 (0.27)	10.66 (0.15)

Table 1: Baseline and demographic characteristics of the participants recruited in the study.

Table 2

	Experimental	Active control	Waitlist control
PHQ-9 (primary endpoint - baseline)	-2.73 ± 1.27(n=22)	-5.14 ± 2.28 (n=7)	-1.12 ± 0.37 (n=139)
PHQ-9 (completion of all modules - baseline)	-4.20 ± 0.83 (n=10)	-	
GAD-7 (primary endpoint - baseline)	-3.27 ± 0.97 (n=22)	-1.43 ± 0.92 (n=7)	-0.89 ± 0.42 (n=94)
GAD-7 (completion of all modules - baseline)	-3.40 ± 0.82 (n=10)	-	

Table 2: Average changes (\pm s.e.) in PHQ-9 and GAD-7 scores for the three groups from the baseline to the primary endpoint or to the completion of all modules. As only 1 participant in the active control group completed all modules, the corresponding values were not analyzed.

Figure 1

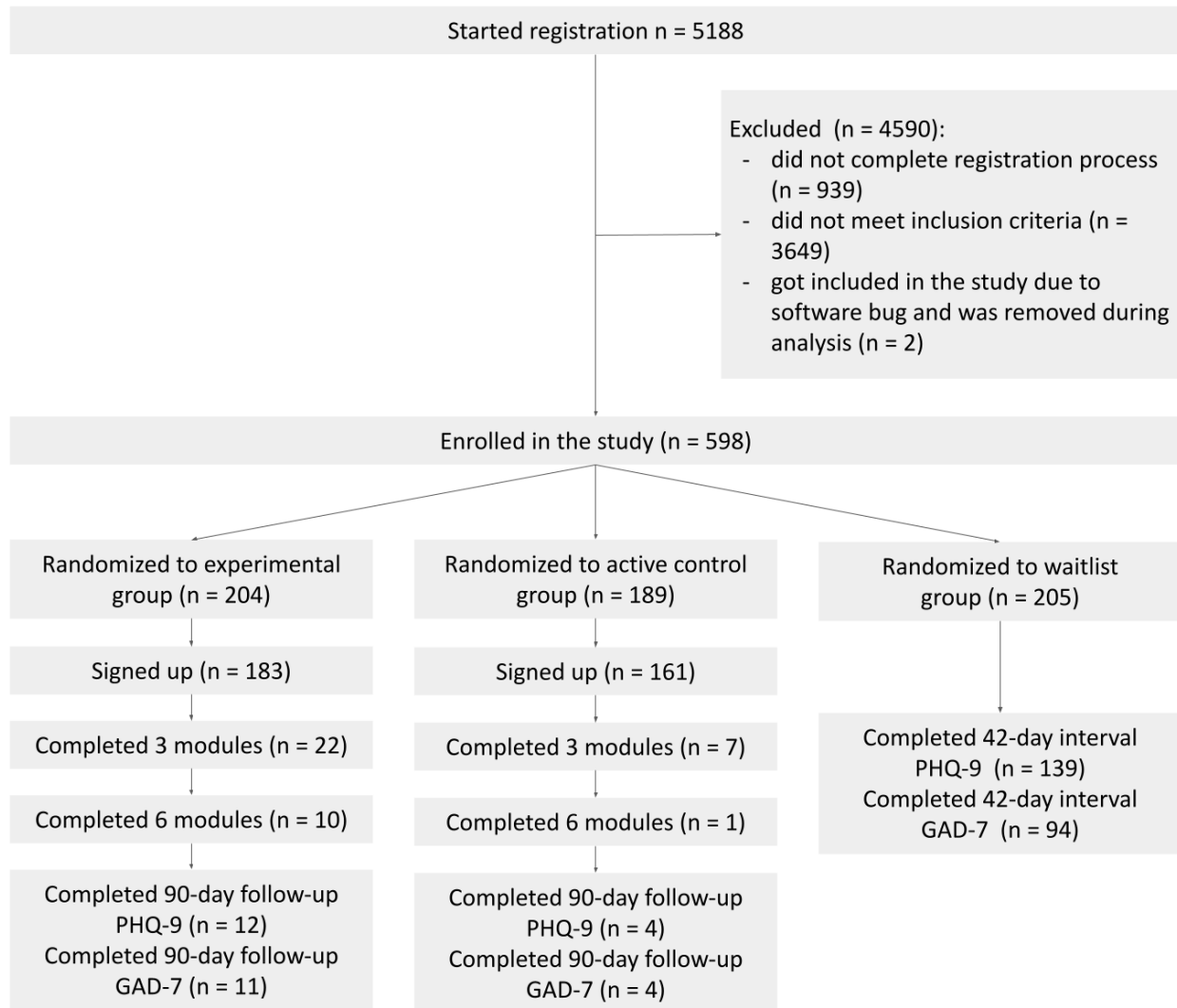


Figure 1: The flow of participants in the trial. In the experimental and the active control groups, the follow-up scores of only those participants were analyzed who had completed at least 3 modules. In the waitlist group, the 42-day interval scores of only those participants were analyzed who had also submitted the baseline scores.

Figure 2

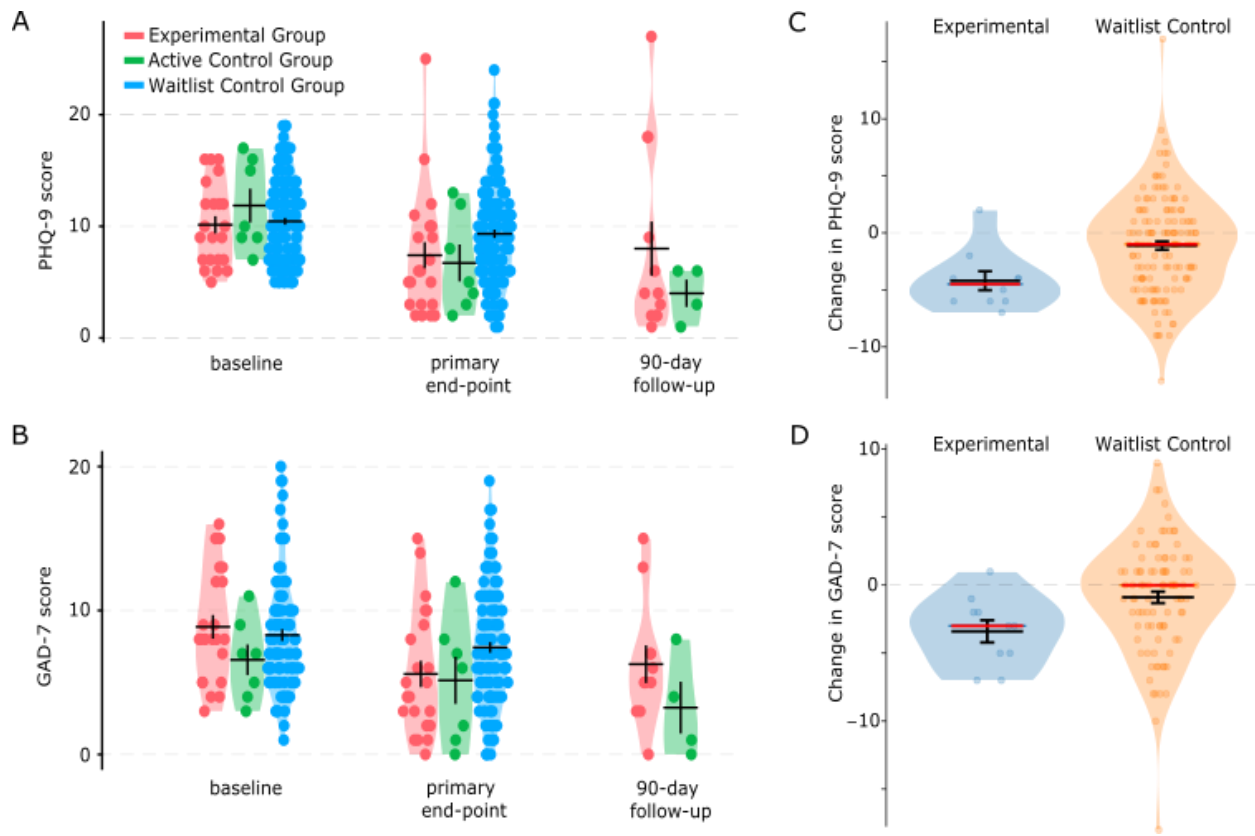


Figure 2: Changes in PHQ-9 and GAD-7 scores after using TreadWill. **A,B,** Violin plots show PHQ-9 (**A**) or GAD-7 (**B**) scores at baseline, primary endpoint, and follow-up for the experimental group, the active control group, and the waitlist group participants. Primary endpoint is defined as the latest PHQ-9 or GAD-7 score submitted after completing three modules. **C,D,** Violin plots show the change from baseline to program completion in PHQ-9 (**C**) or GAD-7 (**D**) score for the experimental group participants who completed all 6 modules (blue violin). For waitlist group participants (orange violin), the plots show the change from the score at the baseline to the score after the 42-day waiting interval (considered as the primary endpoint for the waitlist group). Red horizontal lines: median, black: mean. Error bars represent s.e.

Figure 3

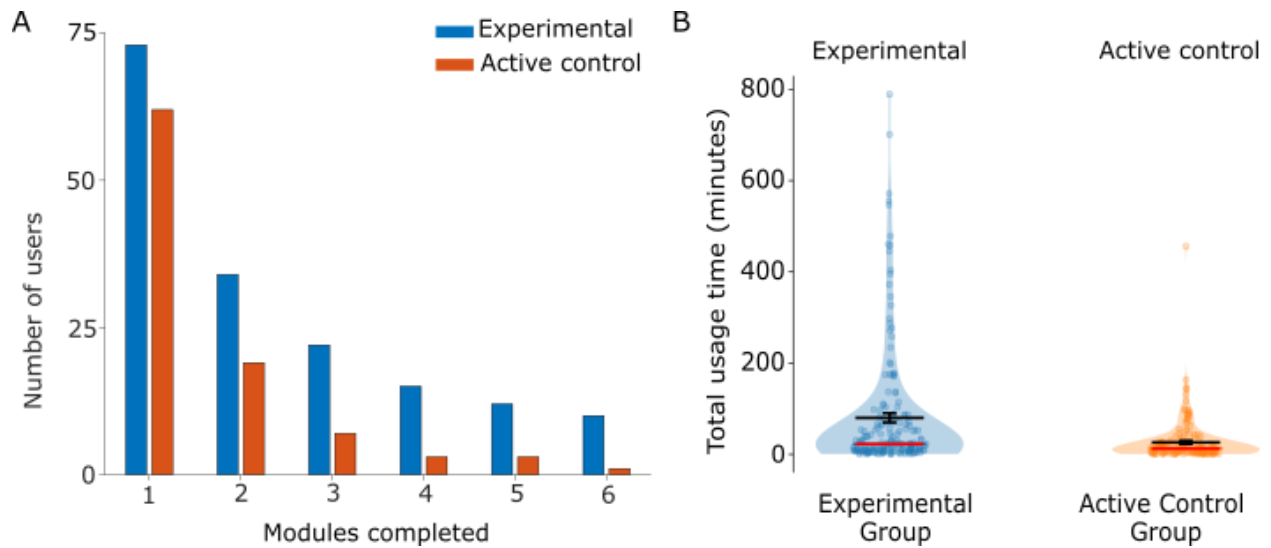


Figure 3: Adherence with TreadWill. **A**, The bar graph shows the number of participants in the experimental and the active control groups who completed the indicated number of modules. **B**, Violin plots show total usage times of the experimental and the active control group participants. Red horizontal lines: median, black: mean. Error bars represent s.e.

Figure 4

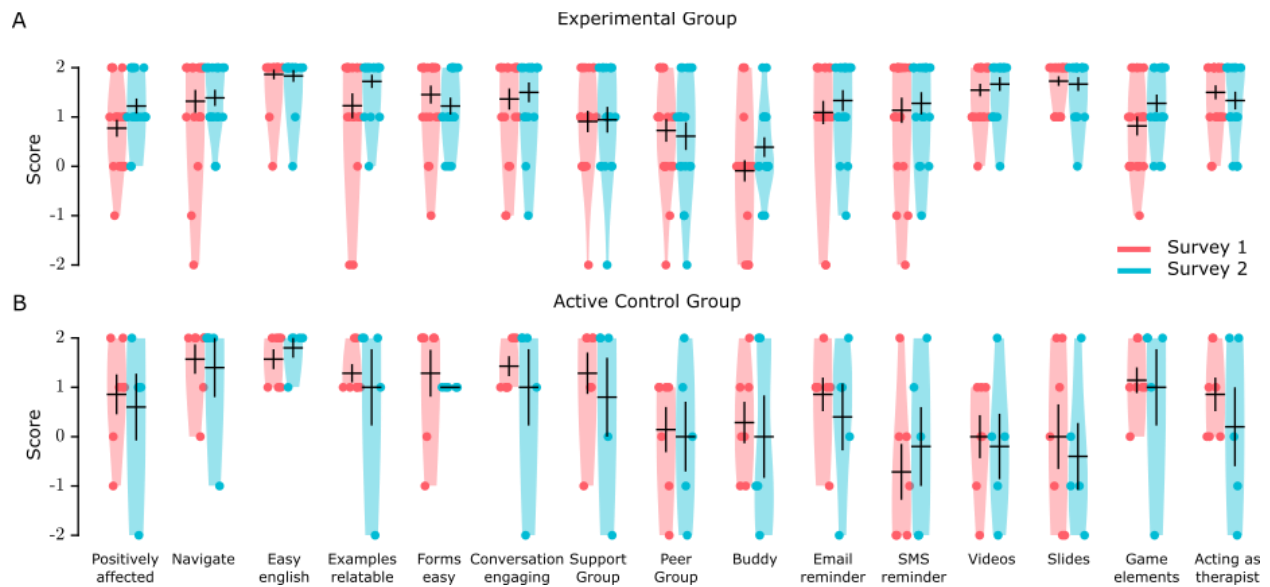


Figure 4: Feedback on the features of TreadWill. Violin plots show survey responses by the experimental group (A) and the active control group participants (B). The full texts of the survey questions are listed in [Supplementary Table S4](#). Y-axis labels: 2 = “strongly agree”, 1 = “somewhat agree”, 0 = “neither agree nor disagree”, -1 = “somewhat disagree”, -2 = “strongly disagree”. Black lines indicate mean \pm s.e.

Figure 5

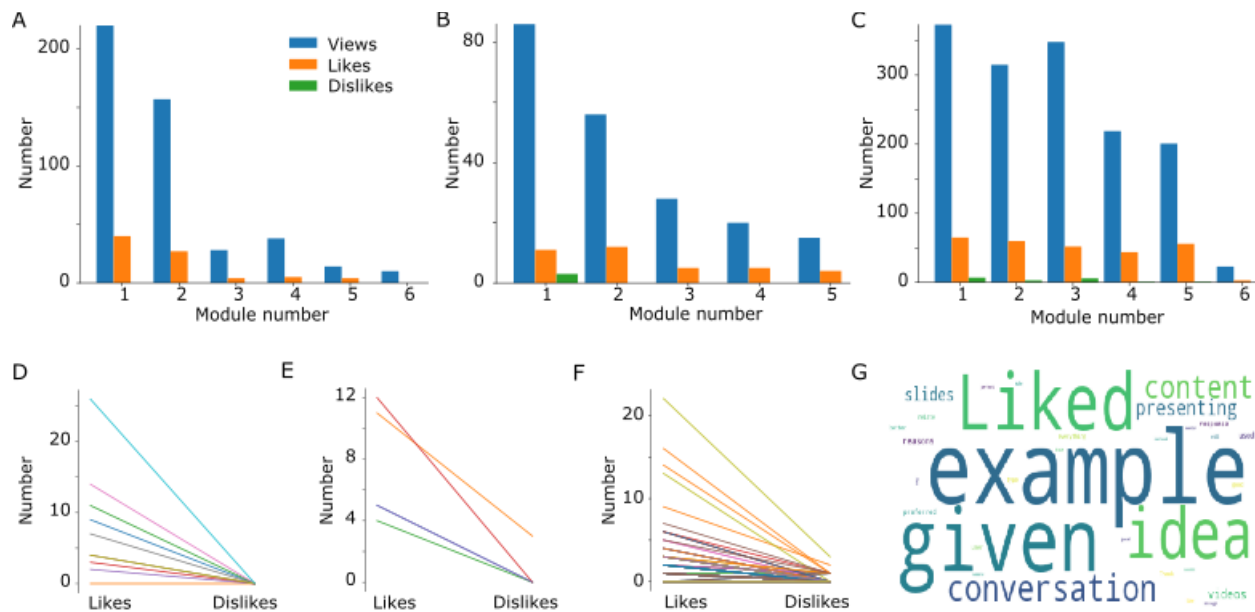


Figure 5: Feedback on the content. **A,B,C**, The bar graphs show the total number of views, likes, and dislikes received from the participants on the slides (**A**), the videos (**B**), and the conversations (**C**) presented in each module of TreadWill. There were no videos in Module 6. **D,E,F**, Slope graphs show that there were typically more likes than dislikes for slides (**D**, $n = 10$), videos (**E**, $n = 5$), and conversations (**F**, $n = 149$) presented in TreadWill. Each line indicates one slide, video, or conversation; some of the lines are overlapping. **G**, Word cloud of the descriptive feedbacks received from the participants on slides, videos, and conversations.