

Understanding the contexts and mechanisms of bluespace prescription programmes implemented in health and social care settings: a realist review

Julius Cesar Alejandro^{1,4*}, Sebastien Chastin^{2,3}, Katherine N. Irvine⁴, Michail Georgiou², Preeti Khanna⁵, Zoë Tiegens^{6,7}, Niamh Smith², Yong-Yee Chong⁸, Frances Claire Onagan⁹, Lesley Price¹⁰, Sharon Pflieger^{11,12}, Rachel Helliwell¹³, Judith Singleton¹⁴, Samuel Curran¹⁵, Karin Helwig¹

¹Department of Civil Engineering and Environmental Management, School of Computing, Engineering and Built Environment, Glasgow Caledonian University, Glasgow, United Kingdom

²Department of Physiotherapy and Paramedicine, School of Health and Life Sciences, Glasgow Caledonian University, Glasgow, United Kingdom

³Department of Movement and Sport Sciences, Ghent University, Ghent, Belgium

⁴Social, Economic and Geographical Sciences Department, The James Hutton Institute, Aberdeen, United Kingdom

⁵Department of Food and Nutrition, Institute of Home Economics, University of Delhi, India

⁶SMART Technology Centre, School of Computing, Engineering and Built Environment, Glasgow Caledonian University, Glasgow, Scotland, United Kingdom

⁷Geriatric Medicine, Usher Institute, University of Edinburgh, Edinburgh, Scotland, United Kingdom

⁸Centre for Sport and Exercise Sciences, University of Malaya, Kuala Lumpur, Malaysia

⁹Department of Health, Health Promotion Bureau, Manila, Philippines

¹⁰Department of Nursing and Community Health, School of Health and Life Sciences, Glasgow Caledonian University, Glasgow, United Kingdom

¹¹Public Health Directorate, National Health Service Highland, Inverness, United Kingdom

¹²School of Pharmacy, The Robert Gordon University, Aberdeen, United Kingdom

¹³Centre of Expertise for Waters, The James Hutton Institute, Aberdeen, United Kingdom

¹⁴Faculty of Health, School of Clinical Sciences, Queensland University of Technology, Brisbane, Queensland, Australia

¹⁵International Services, Scottish Environment Protection Agency, Stirling, United Kingdom

*Correspondence to:

Julius Cesar Alejandro

Department of Civil Engineering and Environmental Management, School of Computing, Engineering and Built Environment, Glasgow Caledonian University, Glasgow, G4 0BA, United Kingdom

Email: JuliusCesar.Alejandro@gcu.ac.uk

Abstract

Background: Nature-based social prescribing programmes such as ‘bluespace prescription’ may promote public health and health improvement of individuals with long-term conditions. However, there is limited systematically synthesised evidence that investigates the contexts and mechanisms of Bluespace Prescription Programmes (BPPs) that could inform programme theories for policy and practice.

Methods: We conducted a realist review by searching six databases for articles published between January 2000 and February 2020, in English, about health and social care professionals providing referral to or prescription of blue space activities with health-related outcomes. We developed themes of contextual factors by analysing the contexts of BPPs. We used these contextual factors to develop programme theories describing the mechanisms of BPP implementation. Our study was registered with PROSPERO (CRD42020170660).

Results: Fifteen studies with adequate to strong quality were included from 6,736 records. Service users had improvements on their physical, mental, social health, and environmental knowledge after participating in BPPs referred to or prescribed by health and social care professionals. Patient-related contextual factors were referral information, free equipment and transportation, social support, blue space environments, and skills of service providers. Programme-related contextual factors were communication, multi-stakeholder collaboration, financing, and adequate service providers. Programme theories on patient enrolment, engagement, adherence, communication protocols, and long-term programme sustainability described the mechanisms of BPP implementation.

Conclusion: BPPs could support health and social care services if contextual factors and mechanisms of programme theories associated with patients and programme delivery are considered for implementation. Our findings have implications in planning, development, and implementation of similar nature-based social prescribing programmes in health and social care settings.

Keywords: sustainable healthcare; social prescribing; blue spaces; bluespace prescriptions

UNPUBLISHED PRE-PRINT (NOT PEER-REVIEWED)

Introduction

Social prescribing (SP) is a health and social care approach that promotes health by connecting individuals to community-based and non-medical programmes providing physical activity and social support (Teuton, 2015; Husk et al., 2020). SP is delivered through four referral pathways: 1) signposting; 2) direct referral; 3) link worker, and 4) holistic link worker (Husk et al., 2020). The process commonly starts with a consultation with a healthcare worker (general practitioner/GP). If GPs give information through leaflets and direct patients to community-based organisations (CBOs) or service providers, this is referred to as signposting. Direct referral is when GPs contact CBOs and arrange patient enrolment. The link worker pathway comprises GPs connecting patients to link workers who arrange patient enrolment. The holistic link worker pathway includes a feedback loop between CBOs and link workers (Husk et al., 2020). Moreover, SP implementation is described by programme theories (Husk et al., 2020; Pawson et al., 2005; Rycroft-Malone et al., 2012) on patient enrolment (first successful referral), engagement (attendance to first session), adherence (maintained participation over time), link worker coordination (communication), and partnerships with CBOs (supportive interventions) (Husk et al., 2020; Bickerdike et al., 2017; Chatterjee et al., 2018; Bertotti et al., 2018). SP could help motivate individuals to engage in health-promoting behaviours such as physical activity, socialisation, and self-management (Husk et al., 2020; Bickerdike et al., 2017; Bertotti et al., 2018). It could also help reduce primary healthcare burden by depressurising healthcare professionals' workload through promotion of non-clinical interventions (Bertotti et al., 2018).

Nature-based social prescribing or nature prescription is a type of SP that promotes health and wellbeing through contact with nature (Husk et al., 2020; Leavell et al., 2019). Exposure to nature can improve physical and mental health (Hartig et al., 2014), and the presence of blue spaces, defined as natural and manmade outdoor surface water environments,

enhances these effects (Pouso et al., 2021; Benton et al., 2021; Völker and Kistemann, 2011). Contact with blue spaces are associated with health outcomes as illustrated by the ‘Blue Space and Health/Wellbeing Model’ (White et al., 2020). Exposure to blue spaces in terms of duration, frequency, and intensity is associated with individuals’ contact with blue spaces which could be indirect (window view), incidental (commute along a river path), or intentional (beach visit) (White et al., 2020; Keniger et al., 2013). Contact with blue spaces improves health outcomes through mitigation (noise abatement), instoration (physical activity), and restoration (stress reduction) pathways (White et al., 2020; Markevych et al., 2017), resulting in improved mood, self-esteem, physical activity, social interactions, and decrease in mortality (Georgiou et al., 2021; Tiegues et al., 2020; Finlay et al., 2015). These pathways are associated with environmental (type, quality, weather) or personal (age, gender, ethnicity) effect modifiers influencing engagement with blue space activities (BSAs) (White et al., 2020). The exposure–outcome pathway is catalysed by feedback actions such as quality improvement (societal) and safe access (local) to blue spaces (White et al., 2020). It also includes personal actions such as nature-based social prescribing (Blue Gyms and prescribing therapeutic BSAs) that targets individuals’ motivations to have contact with blue spaces (White et al., 2020; Depledge and Bird, 2009; Britton et al., 2020).

The knowledge base on social prescribing falls behind the fast growth and roll-out of social prescribing programmes on the ground (Husk et al., 2020). There is limited understanding on the contextual implementation of specific types of SP (Husk et al., 2020) including nature-based social prescribing programmes the utilise blue spaces. There is also an evidence gap on the effectiveness (Bickerdike et al., 2017; Chatterjee et al., 2018; Pescheny et al., 2018), suitability (Pilkington et al., 2017), referral processes (Chatterjee et al., 2018), and factors influencing SP uptake (Britton et al., 2020; Buckley and Brough, 2017). Additionally, existing systematic reviews on social prescribing mainly focused on general and greenspace

programmes (Husk et al., 2020; Bertotti et al., 2018; Masterton et al., 2020). Considering these gaps and the growing evidence on the health benefits of blue spaces, we conducted a realist review to investigate the contexts and mechanisms of implementing Bluespace Prescription Programmes (BPPs) delivered to people with health conditions. We used realist synthesis (Pawson et al., 2005) to investigate the contextual factors influencing BPP implementation (Pawson et al., 2005; Rycroft-Malone et al., 2012) and used these contextual factors to develop programme theories describing the mechanisms of BPP implementation.

Methods

Our systematic realist review followed the PRISMA guidelines (Page et al., 2021) and realist reviews (Berg, 2016). A realist review is way of evidence synthesis that provides explanation why interventions work or do not work in certain circumstances by interrogating the contextual complexities and mechanisms of implementing such interventions (Rycroft-Malone, 2012). The steps of a realist review are: 1) identifying the question; 2) clarifying the purpose of the review; 3) finding and articulating the initial programme theories; 4) searching for evidence; 5) appraising the evidence; 6) extracting the data; 7) synthesising findings; and 8) drawing conclusions and recommendations (Berg, 2016).

Identifying the question and clarifying the purpose of the review

We defined BPP as individual or group activities that take place in or around natural water environments such as surfing, swimming, running near blue spaces, amongst others (interventions), which are referred to or prescribed by health and social care professionals (population or participants) through SP referral pathways and with health-related outcomes (outcomes) (Husk et al., 2020). We included peer-reviewed research on BPPs conducted in natural water environments which were referred to or prescribed by health and social care workers (GPs, pharmacists, social workers, link workers, etc.) to individuals attending health

and social care facilities and with health-related outcomes. We included case reports, qualitative, case-control, cohort, pre-post intervention studies, non-randomised, and randomised controlled trials published in English. We limited the publication period from January 2000 to February 2020 since research on the health benefits of blue spaces emerged in the early 2000s (Völker and Kistemann, 2011; Britton et al., 2020). We excluded studies where non-health or non-social care workers referred BSAs to participants through advertisements and studies in which BSAs were not conducted in natural water environments.

Finding and articulating the initial programme theories

Our search and data analysis were guided by the following initial social prescribing programme theories (PTs):

Initial PT1: If referral is presented in an acceptable manner, it is compatible with the patient's needs and expectations, and the patient believes that it will improve their condition, then they may enrol (enrolment) (Husk et al., 2020).

Initial PT2: If transportation is provided making the socially prescribed activity accessible to the patient, then they will engage (engagement) (Husk et al., 2020).

Initial PT3: If the service providers are skilled and there are improvements on patient's condition, then they are more likely to keep attending (adherence) (Husk et al., 2020).

Initial PT4: If there are link workers facilitating delivery of social prescriptions and liaising with health and social care facilities and third sector organisations, then the referral uptake will be successful (link worker coordination) (Husk et al., 2020; Bickerdike et al., 2017; Chatterjee et al., 2018; Bertotti et al., 2018).

Initial PT5: If partnership between health and social care facilities and community-based organisations is financially supported, then the delivery of social prescribing programmes will be sustained (partnership with CBOs) (Bickerdike et al., 2017; Chatterjee et al., 2018; Bertotti et al., 2018).

Searching for evidence

We searched PubMed, Web of Science, PsycInfo, MEDLINE, Scopus, and CINAHL using keyword strings (Appendix 1) and conducted snowball search by screening the reference lists of included studies (Schardt et al., 2007; Jalali and Wohlin, 2012). Records were uploaded, de-duplicated, and screened using Rayyan QCRI (Ouzzani et al., 2016). Title, abstract (JA, KH, SCh, and 17 researchers), and full-text screenings (JA–KH, JA–SCh) were independently conducted in pairs. KNI resolved conflicting decisions.

Appraising the evidence

Included studies were categorised based on their methodological approaches to suit the QualSyst tools (Kmet et al., 2004). Quality of studies was independently assessed in pairs (JA–KH, JA–SCh, JA–KNI). Conflicting ratings were reconciled by one-to-one discussion. We adopted strong (≥ 0.80), good (0.71–0.79), adequate (0.51–0.70), and limited (≤ 0.50) quality thresholds for quantitative papers (Lee et al., 2008) and used adequate (≥ 0.55) and low (≤ 0.54) for qualitative studies (Maharaj and Harding, 2016). Quantitative and qualitative components of mixed method studies were assessed separately (Kmet et al., 2004; Maharaj and Harding, 2016).

Extracting the data

JA electronically extracted the names of authors, publication year, methodological approaches, participants, location, prescriber/referrers, referral pathways, facilities, intervention format, BSA type, facilitators, barriers, timescale/duration, dose/frequency, health

conditions, and outcomes. Extracted data were inputted in a bespoke data collection form using Microsoft Excel.

Synthesising the findings

We employed realist synthesis to analyse and synthesise extracted data (Pawson et al., 2005; Rycroft-Malone et al., 2012) about the facilitators, barriers, and descriptions of BPPs and how were they implemented. Using hybrid coding in NVivo 12 (Fereday and Muir-Cochrane, 2006), JA developed themes of contextual factors associated with BPP implementation. These contextual factors were used to develop the context-mechanism-outcome configurations elaborated by ‘if-then’ statements for the development of programme theories describing the mechanism of BPP implementation (Pawson et al., 2005; Rycroft-Malone et al., 2012; Pawson and Bellamy, 2006; Thomas and Harden, 2008). We developed programme theories for BPP implementation by refining the five initial social prescribing programme theories on patient enrolment, engagement, adherence, link worker coordination, and partnership with CBOs (Husk et al., 2020; Rycroft-Malone et al., 2012; Bickerdike et al., 2017; Chatterjee et al., 2018; Bertotti et al., 2018; Pawson and Bellamy, 2006). The developed themes of contextual factors and programme theories for BPP implementation were consulted and validated by JA in a series of virtual meetings and presentations with KH, KNI, SCh; members of the research advisory team (RH, SP, SCu); and other stakeholders from the Hydro Nation Forum, the policy governing body of the Hydro Nation Scholars Programme, which is the funding organisation of this research. The themes of contextual factors and programme theories were refined and finalised based on the comments from these consultations.

Our study was registered with PROSPERO (CRD42020170660).

Results

Search results

We collected 6,736 records from the database and snowball search (Figure 1). We excluded 3,814 duplicates before screening and 2,483 reports due to irrelevancy at title and abstract screening stage. We excluded 136 and 288 reports from database and citation searches, respectively, at full-text screening stage (Appendix 2).

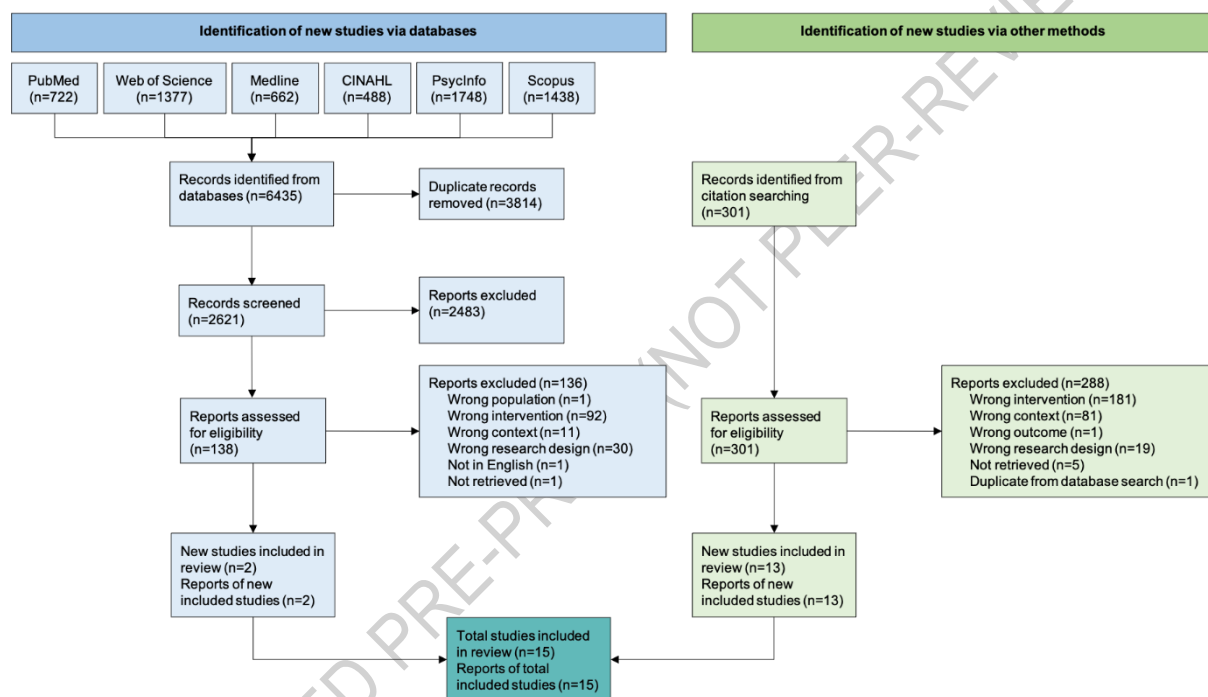


Figure 1. Study selection

Quality assessment results

We included 15 studies. Four quantitative studies had strong (Razani et al., 2018; Rogers et al., 2014; Vella et al., 2013; Maund et al., 2019), two had good (Godfrey et al., 2015; James et al., 2017), and three had adequate quality (de Matos et al., 2017; Hignett et al., 2017; Cavanaugh and Rademacher, 2014). Seven qualitative studies had adequate quality (Maund et al., 2019; White et al., 2016; Lopes, 2015; Bennett et al., 2014; Dustin et al., 2011; Fleischmann et al., 2011; Mowatt and Bennett, 2011). Quantitative papers were downgraded due to

strategies on controlling confounders and reporting variance estimates. Qualitative papers were downgraded because of data collection, verification, and reflexivity procedures (Table 1) (Agarwal et al., 2013).

Since realist reviews require contextual configurations to describe mechanisms of programme implementation, we did not exclude studies which had below average quality results (Pawson et al., 2005; Rycroft-Malone et al., 2012).

UNPUBLISHED PRE-PRINT (NOT PEER-REVIEWED)

Table 1. Results of quality assessment using QualSyst tools (reporting format adopted from Agarwal et al., 2013)

First author, Year	Methodological approach	Quality assessment criteria based on QualSyst tools																		Total scores	Quality scores	Quality	
		Study question	Study design	Sampling strategy	Sample/comparator descriptions	Randomisation	Blinding of investigators	Blinding of subjects	Outcome/exposure measured	Appropriate sample size	Appropriate and systematic analysis	Variance estimates	Confounding controlled	Results	Conclusions	Study context	Knowledge framework	Data collection	Verification				Reflexivity
Bennett, 2014 ⁴⁶	Qualitative	2	2	1	2	2	2	2	2	0	0	15/20	0.75	Adequate
Dustin, 2011 ⁴⁷	Qualitative	2	2	1	1	2	2	2	1	0	2	15/20	0.75	Adequate
Fleischmann, 2011 ⁴⁸	Qualitative	2	2	1	1	2	2	2	0	0	0	12/20	0.60	Adequate
Lopes, 2015 ⁴⁵	Qualitative	2	1	0	1	1	2	2	1	0	1	11/20	0.55	Adequate
Maund, 2009a ³⁸	Qualitative	2	2	2	1	1	2	2	1	2	1	16/20	0.80	Adequate
Mowatt, 2011 ⁴⁹	Qualitative	2	2	2	2	2	2	2	1	0	2	17/20	0.85	Adequate
White, 2016 ⁴⁴	Qualitative	2	2	1	2	2	2	2	2	2	2	19/20	0.95	Adequate
Cavanaugh, 2014 ⁴³	Quantitative	1	1	1	1	NA	NA	NA	2	2	1	1	0	1	1	12/22	0.55	Adequate
de Matos, 2017 ⁴¹	Quantitative	2	2	1	1	NA	NA	NA	NA	1	2	1	0	2	2	14/20	0.70	Adequate
Godfrey, 2015 ³⁹	Quantitative	2	2	1	2	NA	NA	NA	1	2	2	1	0	2	2	17/22	0.77	Good
Hignett, 2017 ⁴²	Quantitative	1	1	1	1	NA	NA	NA	1	1	1	1	0	1	2	11/22	0.50	Adequate
James, 2017 ⁴⁰	Quantitative	1	1	1	2	NA	NA	NA	2	2	2	1	0	2	2	16/22	0.73	Good
Maund, 2009b ³⁸	Quantitative	2	2	2	2	NA	NA	1	2	2	2	2	NA	2	2	21/22	0.95	Strong
Razani, 2018 ³⁵	Quantitative	2	2	2	2	2	1	NA	2	2	2	1	0	2	2	22/26	0.85	Strong
Rogers, 2014 ³⁶	Quantitative	2	2	2	2	NA	NA	NA	2	2	2	1	0	2	2	19/22	0.86	Strong
Vella, 2013 ³⁷	Quantitative	2	2	1	2	NA	NA	NA	2	2	2	2	2	2	2	21/22	0.95	Strong

NA—not applicable; a—qualitative component of mixed method study; b—quantitative component of mixed method study

Characteristics of included studies

Eight studies were conducted in the USA (Razani et al., 2018; de Matos et al., 2017; Bennett et al., 2014; Rogers et al., 2014; Vella et al., 2013; Dustin et al., 2011; Fleischmann et al., 2011; Mowatt and Bennett, 2011), five studies in the UK (Maund et al., 2019; Godfrey et al., 2015; Hignett et al., 2017; Cavanaugh and Rademacher, 2014; White et al., 2016), and two in Portugal (de Matos et al., 2017; Lopes, 2015) (Table 2). Eight hundred three (803) service users aged between 2 and 85 years participated in the studies, of which 197 were veterans aged between 21 and 50 years. BSAs were referred to or prescribed by health, social care, and health-trained teachers. The prescription or referral was provided in healthcare (Razani et al., 2018; Rogers et al., 2014; Vella et al., 2013; Godfrey et al., 2015; James et al., 2017; White et al., 2016; Bennett et al., 2014; Dustin et al., 2011; Fleischmann et al., 2011; Mowatt and Bennett, 2011), social care (Maund et al., 2019; Godfrey et al., 2015; James et al., 2017; de Matos et al., 2017; White et al., 2016), and specialised educational facilities (Godfrey et al., 2015; Hignett et al., 2017; Cavanaugh and Rademacher, 2014) using SP referral pathways (Husk et al., 2020). In one study, all three facilities provided the referral or prescription (Godfrey et al., 2015).

Blue space activities prescribed in healthcare facilities

Ten studies were in military hospitals, GP practices, paediatric, and rehabilitation clinics (Razani et al., 2018; Rogers et al., 2014; Vella et al., 2013; Godfrey et al., 2015; James et al., 2017; White et al., 2016; Bennett et al., 2014; Dustin et al., 2011; Fleischmann et al., 2011; Mowatt and Bennett, 2011). Veterans with hearing impairment, anxiety, depression, TBI, and PTSD were prescribed with fly-fishing by recreational therapists through signposting or direct referral (Vella et al., 2013; Bennett et al., 2014; Mowatt and Bennett, 2011). Veterans with PTSD were directly referred to a combination of running, boating, kayaking, and paddling by a team of recreational therapist, nurse, psychologist, and social worker (Dustin et al., 2011). Some veterans with PTSD (Rogers et al., 2014) and children who were obese, had sensory

problems, depression, anxiety, and PTSD (Godfrey et al., 2015) were prescribed with surfing by physicians (Rogers et al., 2014) or a team of GPs, nurses, and psychologists (Godfrey et al., 2015) through direct referral or holistic link worker. Socioeconomically deprived and ethnically diverse children with obesity, loneliness, and poor mental health were prescribed with play at a beach (Razani et al., 2018; James et al., 2017) by pediatricians using holistic link worker (James et al., 2017) or a combination of signposting and link worker pathways (Razani et al., 2018). Patients who experienced substance abuse were directly referred to sailing by substance abuse specialists (White et al., 2016). Participants had improvements in mood and emotions (Razani et al., 2018; White et al., 2016), better sleep quality (Vella et al., 2013), self-efficacy (White et al., 2016; Bennett et al., 2014; Mowatt and Bennett, 2011), reduced substance intake (White et al., 2016; Dustin et al., 2011), decreased stress and PTSD symptomatology (Rogers et al., 2014; Vella et al., 2013), and increased relaxation (Razani et al., 2018; Vella et al., 2013; Mowatt and Bennett, 2011). Some felt less depressed, anxious, and lonely (Razani et al., 2018) whilst others felt improvements in their mobility (Fleischmann et al., 2011), physical activity (Razani et al., 2018; James et al., 2017), and body weight (James et al., 2017). Others had improved social skills and increased contact with nature (Razani et al., 2018).

Blue space activities prescribed in social care facilities

Four studies were in social care institution, foster care homes, and community wellbeing centre (Maund et al., 2019; Godfrey et al., 2015; de Matos et al., 2017; Lopes, 2015). Young people and adults with mobility and sensory impairment (Lopes, 2015), psychosocial problems, anxiety, and depression were directly referred to surfing by either a team of social worker and therapist (Lopes, 2015); social worker and adolescent educators (de Matos et al., 2017); or social child support specialist (Godfrey et al., 2015; de Matos et al., 2017; Lopes, 2015). Adults and elderly patients with anxiety and depression were referred to guided river

walks, bird and otter watching, and canoeing by mental health workers through a link worker pathway (Maund et al., 2019). Participants improved daily functioning, self-esteem (Godfrey et al., 2015), fitness, physical activity (Godfrey et al., 2015; de Matos et al., 2017), mental and emotional wellbeing (Godfrey et al., 2015; de Matos et al., 2017), interpersonal competencies (Godfrey et al., 2015; de Matos et al., 2017; Lopes, 2015), and environmental knowledge (Lopes, 2015).

Blue space activities prescribed in specialised educational institutions

Three studies were in specialised educational facilities and pupil referral units (Godfrey et al., 2015; Hignett et al., 2017; Cavanaugh and Rademacher, 2014). Young people with behavioural problems, ASD, depression, anxiety, and sensory problems were referred to surfing by psychologists, health-trained educators, or social and child support specialists using direct referral or holistic link worker pathways (Godfrey et al., 2015; Hignett et al., 2017; Cavanaugh and Rademacher, 2014). Participants had improvements in their attitude (Hignett et al., 2017), self-esteem (Godfrey et al., 2015), physical fitness (Godfrey et al., 2015; Hignett et al., 2017), mental and emotional wellbeing (Hignett et al., 2017), social competence (Godfrey et al., 2015; Hignett et al., 2017; Cavanaugh and Rademacher, 2014), and ecological knowledge (Hignett et al., 2017).

Table 2. Characteristics of included studies and corresponding pre-existing social prescribing programme theories

Authors, Year, Country	Prescriber or referrer	Referral pathway	Facility providing prescription or referral	Type of blue space activity	Programme format	Timescale	Frequency and duration	Service users	Health and wellbeing status	Health, wellbeing, and other outcomes
Bennett et al., 2014, USA	Recreational therapist	Signposting	Veteran hospital	Fly-fishing	Structured fly-fishing, stretching, and breathing exercises, campfire, and games	4 days	4 sessions, 4 hours each	28 veterans, aged 22-50 years	PTSD, TBI, and hearing impairment	Self-confidence, social reconnection, overcoming fears
Cavanaugh and Rademacher, 2014, UK	Psychologist	Holistic link worker	Specialised school	Surfing	Structured pre-post surf camp, family socials, group activities, two-day surf camp (i.e., arts and crafts, frame decoration, paddle relay, sandcastle building, and t-shirt signing)	7 weeks (estimated)	7 sessions (estimated), unspecified duration	11 student campers, aged 10-16 years	ASD	Social competence (assertion, responsibility, and engagement); social skills (ownership of behaviour)
de Matos et al., 2017, Portugal	Social worker and adolescent educators	Direct referral	Foster care homes	Surfing	Structured group surfing and psycho-educational activities	3 months (estimated)	8 sessions, 4 hours each	48 adolescents, aged 10-16 years	Psychosocial problem and vulnerability	Perseverance, problem solving, time management, social competencies, interpersonal relationship, emotional regulation, improved peer interaction, surfing skills, and sea safety
Dustin et al., 2011, USA	Therapeutic recreation specialist, nurse, psychologist, social worker	Direct referral	Veteran hospital	Combined river running, kayaking, and paddling	Structured boating (floating), hiking, campfire, and socials	4 days	Whole day camping for 4 days	13 veterans, unspecified age	PTSD	Reduced PTSD symptomology
Fleischmann et al., 2011, USA	Exercise physiologist	Holistic link worker	Veteran hospital	Surfing	Structured group surf therapy and yoga for strength training, balance rehabilitation, and hydrotherapy	6 months	24 sessions, 3 hours each	One adult, aged 21 years	Polytrauma, TBI, and mild depression	Improved mobility (walking, balancing, vestibular function, muscular strength, aerobic endurance); relief from TBI; reduced narcotic intake
Godfrey et al., 2015, UK	GP, nurse, psychologist; and social and child support service specialist	Direct referral	GP surgery, educational facility, and social care institution	Surfing	Structured group surfing	6 weeks	6 sessions, unspecified duration	121 young people, aged 8-18 years	Depression, anxiety, social exclusion, obesity, and sensory problems	Robust positive functioning, self-esteem, emotional wellbeing, vitality, friendship and social trust, fitness, and physical activity

Hignett et al., 2017, UK	Teachers trained in assessing social, emotional, and behavioural status of children using a tool developed by the local council	Direct referral	Short stay schools or pupil referral units	Surfing	Structured surfing and environmental awareness activities (e.g., beach cleaning)	12 weeks	Unspecified	58 young people, aged 13-16 years	Aggressive behaviours, social, emotional, and behavioural problems	Physical fitness (drop in resting heart rate); personal and interpersonal wellbeing; social connectedness; positive attitude; and environmental awareness and knowledge
James et al., 2017, USA	Paediatrician	Holistic link worker	Community health clinic/centre	Play activities	Unstructured physical activities outdoors (e.g., nature walks, unstructured playtime at the beach)	Unspecified	Weekly sessions, unspecified duration	Unspecified number of children, aged 2-13 years	Overweight and obesity	Physical activity and weight loss
Lopes, 2015, Portugal ⁴⁵	Therapist and social worker	Direct referral	Rehabilitation centres and foster care homes	Surfing	Structured adapted surfing encompassing activities of daily living, education, work, play and leisure, and social participation	1 year	10 surfing sessions, unspecified duration	321 children and adults, aged 8-66 years	Mobility and visual impairment, cognitive disabilities	Social skills and inclusion, mental wellbeing, physical activity, and health and environmental awareness
Maund et al., 2009, UK	Mental health support worker	Link worker	Community wellbeing service	Combined nature and river walk, bird and otter watching, and canoeing	Structured guided nature walks, introduction to wetland reserve, feeding and identifying bird species, canoeing, and free time in nature	6 weeks	6 sessions, unspecified duration	16 adults, aged 65-85 years	Anxiety and depression	Improved mental and physical health; and social inclusion
Mowatt and Bennett, 2011, USA	Recreational therapist	Signposting	Veteran hospital	Fly-fishing	Unstructured fly-fishing	2 days	Whole day for 2 days	67 veterans, unspecified age	PTSD	Being at the present state, relaxed, and retrospective reconciliation
Razani et al., 2018, USA	Paediatrician	Signposting and link worker	Primary care clinic	Play activities	Mix of independent and supported park prescription (e.g., group nature outings and play activities at the bayfront and lake)	3 weeks	Unspecified	78 children, average age of 8-8 years	Poor mental health, loneliness, and psychological stress	Decrease in stress, improvement in loneliness and physical activity, nature affinity and frequent park visit
Rogers et al., 2014, USA	Physician	Holistic link worker	Primary care clinic	Surfing	Structured one-to-one surfing lesson and collaborative socialisation	5 weeks	5 sessions, 4 hours each	14 veterans, aged 24-30 years	PTSD and depression	Lower PTSD symptom severity
Vella et al., 2013, USA	Recreational therapist	Direct referral	Veteran hospital	Fly-fishing	Structured fly-fishing, socials, games, and entertainment	2 days	4 sessions, 4 hours each	74 veterans, unspecified age	PTSD, TBI, major depressive disorder, and anxiety	Sustained reduction in symptoms of depression, anxiety, and somatic stress; increased sleep quality and efficiency; improvement in

										mood profiles (e.g., attentiveness, serenity, self-assuredness, joviality, positive affect); and decreased feelings of guilt, hostility, fear, sadness, and negative affect
White et al., 2016, UK	Medical professionals specialising in drug and alcohol dependency	Direct referral	Rehabilitation clinic	Sailing	Structured day-to-day sailing functions and group activities and socialisation (e.g., hosting sails, lifting anchors, cooking, cleaning, navigation, steering, keeping watch, and attending social meetings)	5 days	Whole day for 5 days	11 adults, aged 26-61 years	Alcohol and drug use	Self-insight, perseverance, and inner strength; social skills; increased confidence; abstinence to substance abuse; and positive future framing

PTSD–post traumatic stress disorder; TBI–traumatic brain injury; ASD–autism spectrum disorder; GP–general practitioner

Contextual factors and programmes theories describing the mechanisms of BPP implementation

The patterns of contextual factors (CFs) associated with the implementation of BPPs are either patient-related or programme-related. In total, we identified 20 patient and programme-related contextual factors (Table 3). The patient-related contextual factors are presentation of information on prescription or referral (CF1), patient perceptions of blue space activities (CF2), programme format (activity, timescale, frequency, duration) (CF3), accessibility (provision of transportation, equipment, other logistics) (CF4), compatibility of blue space activities to patient needs (CF5), social environment (CF6), blue space environment (CF7), skilled service providers (CF8), values of service providers (CF9), social support (CF10), and health, wellbeing, and other personal improvements of service users (CF11). The programme-related contextual factors are: coordination between link workers, service providers, and health and social care facilities (CF12), patient-to-link worker communication (CF13), patient-to-healthcare provider communication (CF14), patient-to-service provider communication (CF15), patient-to-patient communication (16),

patient-to-carer communication (CF17), organisational support (staff and volunteers) (CF18), stakeholder support (CF19), and funding and policy support (CF20).

Table 3. Themes of contextual factors associated with BPP implementation and initial social prescribing programme theories

Source study	Identified contextual factors (CFs)	No. of initial social prescribing programme theories (PTs) supported by the study
Bennett et al., 2014	Programme format (activity, timescale, frequency, and duration) (CF3) Accessibility (provision of transportation, equipment, and other logistics) (CF4) Compatibility of blue space activities to patient needs (CF5) Social environment (CF6) Blue space environment (CF7) Values of service providers (CF9) Social support (CF10) Health, wellbeing, and other personal improvements of service users (CF11) Organisational support (staff and volunteers) (CF18) Funding and policy support (CF20)	1,2,3,5
Cavanaugh and Rademacher, 2014	Programme format (activity, timescale, frequency, and duration) (CF3) Skilled service providers (CF9) Health, wellbeing, and other personal improvements of service users (CF11) Organisational support (staff and volunteers) (CF18)	1,2,3,5
de Matos et al., 2017	Programme format (activity, timescale, frequency, and duration) (CF3) Social environment (CF6) Skilled service providers (CF9) Social support (CF10) Health, wellbeing, and other personal improvements of service users (CF11) Coordination between link workers, service providers, and health and social care facilities (CF12) Organisational support (staff and volunteers) (CF18)	1,2,3,4,5
Dustin et al., 2011,	Programme format (activity, timescale, frequency, and duration) (CF3) Social environment (CF6) Blue space environment (CF7) Social support (CF10) Health, wellbeing, and other personal improvements of service users (CF11)	1,2,3,4,5

	<p>Patient-to-patient communication (CF16) Stakeholder support (CF19) Funding and policy support (CF20)</p>	
Fleischmann et al., 2011	<p>Programme format (activity, timescale, frequency, and duration) (CF3) Social environment (CF6) Social support (CF10) Health, wellbeing, and other personal improvements of service users (CF11) Patient-to-patient communication (CF16)</p>	1,2,3,4
Godfrey et al., 2015	<p>Programme format (activity, timescale, frequency, and duration) (CF3) Accessibility (provision of transportation, equipment, and other logistics) (CF4) Values of service providers (CF9) Health, wellbeing, and other personal improvements of service users (CF11) Organisational support (staff and volunteers) (CF18) Funding and policy support (CF20)</p>	1,2,3,5
Hignett et al., 2017	<p>Programme format (activity, timescale, frequency, and duration) (CF3) Accessibility (provision of transportation, equipment, and other logistics) (CF4) Blue space environment (CF7) Health, wellbeing, and other personal improvements of service users (CF11) Organisational support (staff and volunteers) (CF18) Stakeholder support (CF19)</p>	1,2,3,5
James et al., 2017	<p>Presentation of information on prescription or referral (CF1) Programme format (activity, timescale, frequency, and duration) (CF3) Accessibility (provision of transportation, equipment, and other logistics) (CF4) Health, wellbeing, and other personal improvements of service users (CF11) Coordination between link workers, service providers, and health and social care facilities (CF12) Patient-to-link worker communication (CF13) Patient-to-healthcare provider communication (CF14) Patient-to-service provider communication (CF15) Patient-to-carer communication (CF17) Stakeholder support (CF19)</p>	1,2,3,4,5
Lopes, 2015	<p>Patient perceptions of blue space activities (CF2) Programme format (activity, timescale, frequency, and duration) (CF3) Accessibility (provision of transportation, equipment, and other logistics) (CF4) Compatibility of blue space activities to patient needs (CF5) Social environment (CF6) Blue space environment (CF7) Values of service providers (CF9) Social support (CF10)</p>	1,2,3,4,5

	<p>Patient-to-patient communication (CF16) Organisational support (staff and volunteers) (CF18) Stakeholder support (CF19)</p>	
Maund et al., 2009	<p>Programme format (activity, timescale, frequency, and duration) (CF3) Accessibility (provision of transportation, equipment, and other logistics) (CF4) Social environment (CF6) Blue space environment (CF7) Values of service providers (CF9) Social support (CF10) Health, wellbeing, and other personal improvements of service users (CF11) Organisational support (staff and volunteers) (CF18)</p>	1,2,3,5
Mowatt and Bennett, 2011	<p>Social environment (CF6) Blue space environment (CF7) Values of service providers (CF9) Social support (CF10) Health, wellbeing, and other personal improvements of service users (CF11) Patient-to-link worker communication (CF13) Patient-to-healthcare provider communication (CF14) Patient-to-service provider communication (CF15) Patient-to-patient communication (CF16) Patient-to-carer communication (CF17)</p>	2,3,4
Razani et al., 2018	<p>Presentation of information on prescription or referral (CF1) Programme format (activity, timescale, frequency, and duration) (CF3) Accessibility (provision of transportation, equipment, and other logistics) (CF4) Values of service providers (CF9) Health, wellbeing, and other personal improvements of service users (CF11) Patient-to-link worker communication (CF13) Patient-to-healthcare provider communication (CF14) Patient-to-service provider communication (CF15) Patient-to-carer communication (CF17)</p>	1,2,3,4
Rogers et al., 2014	<p>Patient perceptions of blue space activities (CF2) Programme format (activity, timescale, frequency, and duration) (CF3) Accessibility (provision of transportation, equipment, and other logistics) (CF4) Social environment (CF6) Values of service providers (CF9) Social support (CF10) Health, wellbeing, and other personal improvements of service users (CF11) Patient-to-link worker communication (CF13)</p>	1,2,3,4

	Patient-to-healthcare provider communication (CF14) Patient-to-service provider communication (CF15) Patient-to-patient communication (CF16) Patient-to-carer communication (CF17)	
Vella et al., 2013	Programme format (activity, timescale, frequency, and duration) (CF3) Accessibility (provision of transportation, equipment, and other logistics) (CF4) Social environment (CF6) Blue space environment (CF7) Social support (CF10) Health, wellbeing, and other personal improvements of service users (CF11) Organisational support (staff and volunteers) (CF18)	1,2,3,5
White et al., 2016	Programme format (activity, timescale, frequency, and duration) (CF3) Social environment (CF6) Blue space environment (CF7) Social support (CF10) Values of service providers (CF9) Health, wellbeing, and other personal improvements of service users (CF11)	1,2,3

The combinations of 20 patient and programme-related contextual factors informed the development of programme theories describing the mechanisms of BPP implementation (Pawson et al., 2005; Rycroft-Malone et al., 2012; Pawson and Bellamy, 2006). Table 4 presents how the different contextual factors informed the development of final programme theories for BPP implementation based on the initial social prescribing programme theories.

Table 4. Final programme theories for BPP implementation using the identified contextual factors

Initial Social Prescribing Programme Theories (PTs) supported by included studies	Context	Setting	Contextual Factors (CF)	Final Programme Theories describing the mechanisms of implementing Bluespace Prescribing Programmes based on initial social prescribing programme theories
<p>Initial PT1: Patient enrolment</p> <p><i>If referral is presented in an acceptable manner, it is compatible with patient's need and expectations, and the patient believes that it will improve their condition, then they may enrol (Husk et al., 2020).</i></p>	<p>People with physical and/or mental health conditions seek health and social care services</p>	<p>Health or social care facilities</p>	<p>CF1 Presentation of information on prescription or referral</p> <p>CF2 Patient perceptions of blue space activities</p> <p>CF3 Programme format (activities, timescale, frequency, and duration)</p>	<p>Final PT1: Patient enrolment to blue prescription programmes</p> <p><i>If service users' apprehensions and optimism are positively influenced by information on BPPs provided by prescribers, then they may enrol.</i></p>
<p>Initial PT2: Patient engagement</p> <p><i>If transportation is provided making the socially prescribed activity accessible to the patient, then they will engage (Husk et al., 2020).</i></p>	<p>People with physical and/or mental health conditions enrolled to a community-based blue prescription programme</p>	<p>Community-based organisation providing blue prescription programmes</p>	<p>CF3 Programme format (activity, timescale, frequency, and duration)</p> <p>CF4 Accessibility (provision of transportation, equipment, and other logistics)</p> <p>CF5 Compatibility of blue space activities to patient needs</p> <p>CF6 Social environment</p> <p>CF7 Blue space environment</p>	<p>Final PT2: Patient engagement with blue prescription activities</p> <p><i>If service users are provided with free logistics, equipment, and transportation to access a socially supportive and client-centred blue space activity and environment, then they may engage.</i></p>
<p>Initial PT3: Patient adherence</p> <p><i>If the service providers are skilled and there are improvements on patient's condition, then they are more likely to keep attending (Husk et al., 2020).</i></p>	<p>People with physical and/or mental health condition engaging with community-based blue space activities</p>	<p>Community-based organisation providing blue prescription programmes</p>	<p>CF8 Skilled service providers</p> <p>CF9 Values of service providers</p> <p>CF10 Social support</p> <p>CF11 Health, wellbeing, and other personal improvements of service users</p>	<p>Final PT3: Patient adherence to blue prescription programmes</p> <p><i>If service users experience social support and health improvement through blue space activities delivered by knowledgeable and skilled service providers, then they may adhere.</i></p>

<p>Initial PT4: Link worker coordination</p> <p><i>If there are link workers facilitating delivery of social prescriptions and liaising with health and social care facilities and third sector organisations, then the referral uptake will be successful (Husk et al., 2020; Bickerdike et al., 2017; Chatterjee et al., 2018; Bertotti et al., 2018).</i></p>	<p>People with physical and/or mental health conditions seek health and social care (some were accompanied by their carers)</p>	<p>Health or social care facilities and community-based organisations</p>	<p>CF12 Coordination between link workers, service providers, and health and social care facilities</p> <p>CF13 Patient-to-link worker communication</p> <p>CF14 Patient-to-healthcare provider communication</p> <p>CF15 Patient-to-service provider communication</p> <p>CF16 Patient-to-patient communication</p> <p>CF17 Patient-to-carer communication</p>	<p>Final PT4: Visibility of blue prescription programmes in health and social care facilities and successful prescription supported by communication protocols</p> <p><i>If communication protocols are in place between service users, prescribers, link workers, and service providers, then BPPs may be more visible and successfully implemented in health and social care facilities.</i></p>
<p>Initial PT5: Partnership with community-based organisations</p> <p><i>If partnership between health and social care facilities and community-based organisations is financially supported, then the delivery of social prescribing programmes will be sustained (Bickerdike et al., 2017; Chatterjee et al., 2018; Bertotti et al., 2018).</i></p>	<p>People with physical and/or mental health conditions seek health and social care (some are accompanied by their carers)</p>	<p>Health or social care facilities and community-based organisations</p>	<p>CF18 Organisational support (staff and volunteers)</p> <p>CF19 Stakeholder support</p> <p>CF20 Funding and policy support</p>	<p>Final PT5: Long-term programme sustainability of blue prescription programmes</p> <p><i>If BPPs are supported by organisational, stakeholder, funding, and policy interventions, then these are more likely to be sustainably implemented.</i></p>

Figure 2 illustrates the delivery of BPP in health and social care settings and at what stage or component of the implementation where each programme theory is associated.

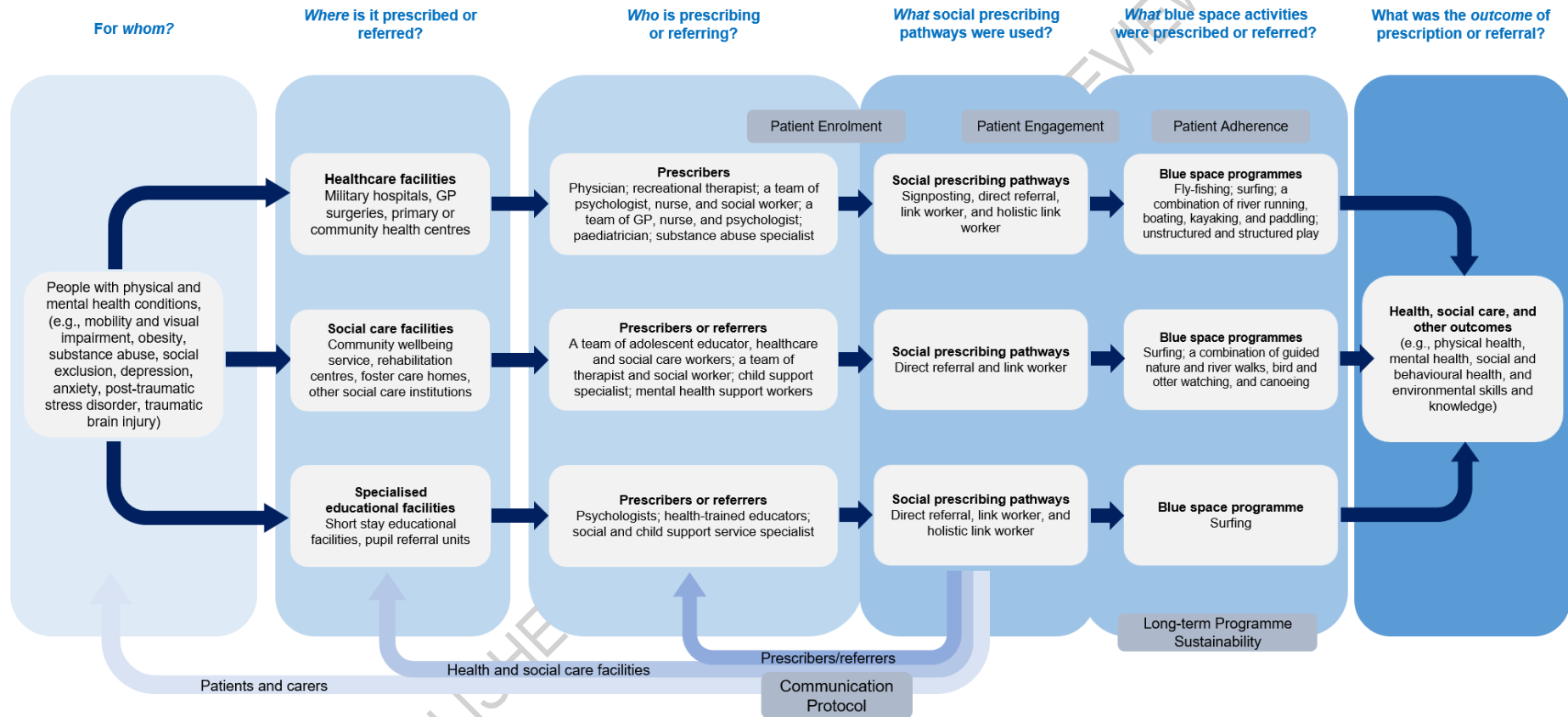


Figure 2. Context and mechanism of prescribing blue space activities in health, social care, and specialised educational facilities

Final Programme Theory 1: If service users' apprehensions and optimism are positively influenced by information on BPPs provided by prescribers, then they may enrol.

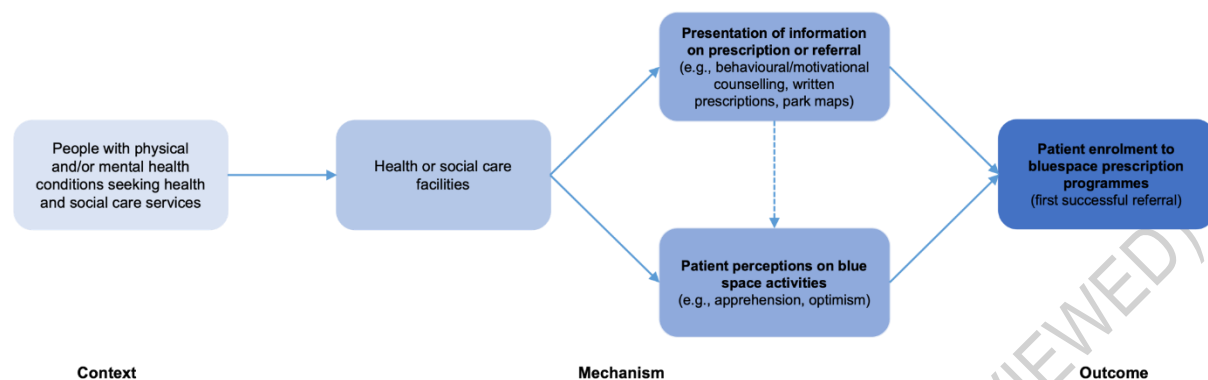


Figure 3. Contextual configurations for patient enrolment programme theory

Some service users were optimistic towards BPPs, whilst others had apprehensions (Rogers et al., 2014; Lopes, 2015). The novelty of BPPs, unfamiliar environments, and patient's lack of experience generated fear and anxiety (Lopes, 2015). Knowledge sharing through counselling using information about the type, structure, and benefits of BPPs, coupled with maps, pedometers, and activity guides informed patients' decisions to enrol (Razani et al., 2018; James et al., 2017). Patients' enrolment was guided by written prescriptions and initiated contact by link workers (James et al., 2017). Some healthcare workers raised concerns about filling out paper prescriptions being time-consuming and suggested integrating prescriptions of BSAs in the electronic prescribing system (James et al., 2017). Structured BSAs followed programmes of activities (Rogers et al., 2014; Vella et al., 2013; Maund et al., 2019; Godfrey et al., 2015; James et al., 2017; de Matos et al., 2017; Hignett et al., 2017; Bennett et al., 2014) whilst others were provided in an unstructured manner (Razani et al., 2018; James et al., 2017; Mowatt and Bennett, 2011). BPPs were provided as stay-in which required free meals and lodging (Vella et al., 2013; Hignett et al., 2017; Bennett et al., 2014; Dustin et al., 2011; Mowatt and Bennett, 2011), or stay-out (Razani et al., 2018; Rogers et al., 2014; Maund et al., 2019; Godfrey et al., 2015; James et al., 2017; White et al., 2016; Lopes, 2015; Fleischmann et al., 2011).

Final Programme Theory 2: If service users are provided with free logistics, equipment, and transportation to access a socially supportive and client-centred blue space activity and environment, then they may engage.

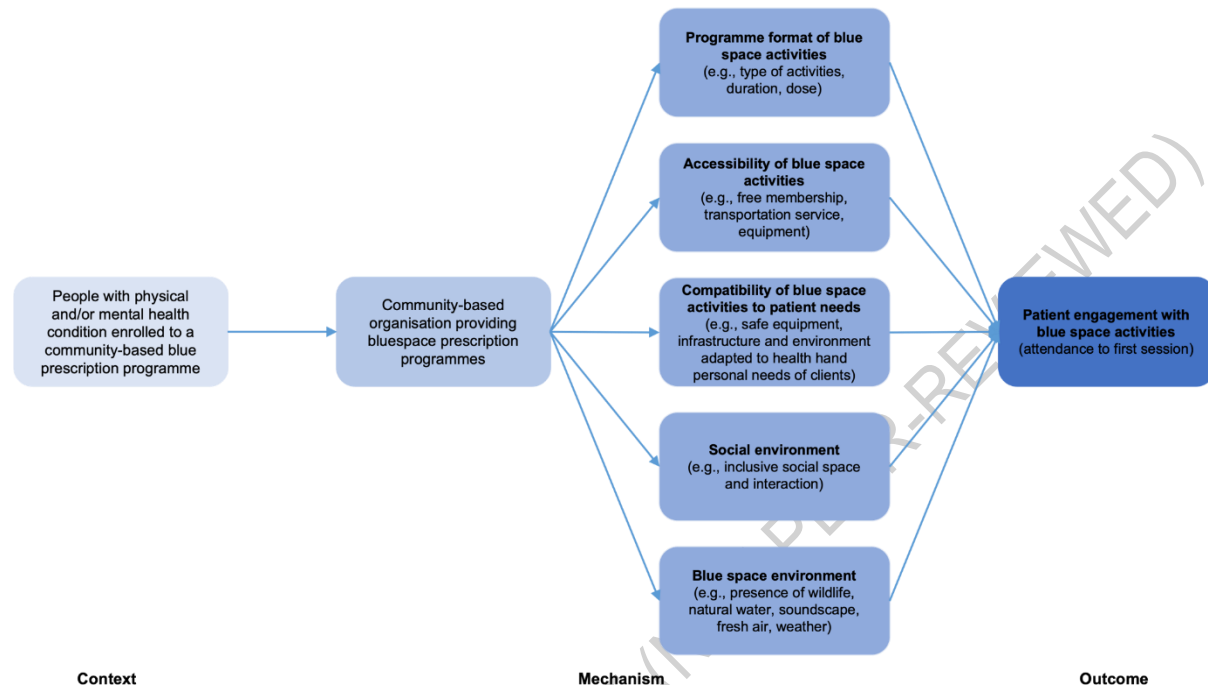


Figure 4. Contextual configurations for patient engagement programme theory

Patient engagement was associated with patient preference, skills, and psychosocial fulfilment after initial sessions (Godfrey et al., 2015; Hignett et al., 2017). Consulting people with disabilities about the design of safety and supportive infrastructure making the environment accessible and adaptive to their needs enabled engagement (Lopes, 2015; Bennett et al., 2014). Service users had strong interests in BPPs because these were free (James et al., 2017). However, some BPPs (surfing, canoeing, kayaking) required costly equipment, especially for economically deprived service users. Providing equipment, transportation, and camping fees encouraged engagement especially for activities in distant locations (Razani et al., 2018; Rogers et al., 2014; Vella et al., 2013; Maund et al., 2019; Godfrey et al., 2015; James et al., 2017; Bennett et al., 2014). Travelling in groups to new places also relieved anxious participants (Maund et al., 2019). Wildlife and natural blue space or water environments

facilitated relaxing experiences, distraction, engagement of human senses, self-strength, and acclimatisation (Vella et al., 2013; Maund et al., 2019; White et al., 2016; Bennett et al., 2014; Dustin et al., 2011). Weather was an environmental effect modifier (White et al., 2020; Hignett et al., 2017).

Final Programme Theory 3: If service users experience social support and health improvement through blue space activities delivered by knowledgeable and skilled service providers, then they may adhere.

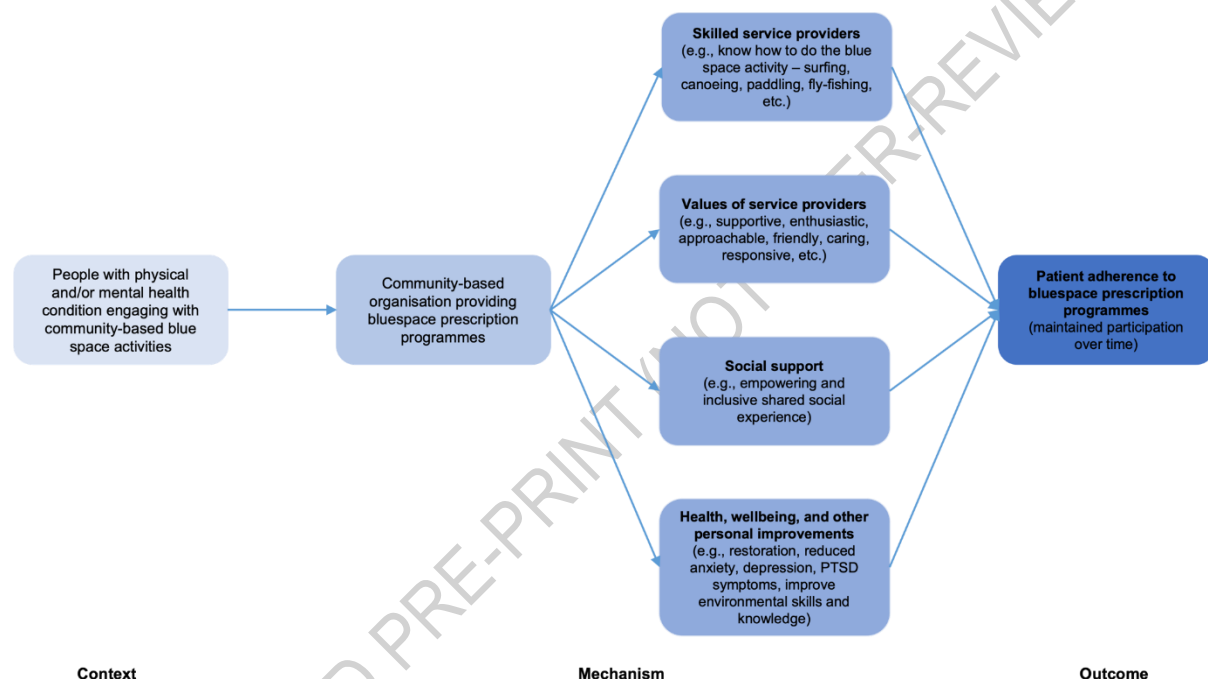


Figure 5. Contextual configurations for patient adherence programme theory

Skilled service providers ensured standardised programme delivery using regularly evaluated guidelines (Hignett et al., 2017). Service providers were also trained on working with clients with disabilities (proper use of surfing boards for children with ASD) (Cavanaugh and Rademacher, 2014; Lopes, 2015). Positive values of service providers were appreciated by participants (Razani et al., 2018; Rogers et al., 2014; Maund et al., 2019; Hignett et al., 2017; White et al., 2016; Lopes, 2015; Bennett et al., 2014). Encouragement, enthusiasm, and positive reinforcement through constructive observations created a friendly atmosphere and empowered participants to explore new activities (Razani et al., 2018; Rogers et al., 2014;

Maund et al., 2019; White et al., 2016; Lopes, 2015). Staff responsiveness facilitated connection with participants (Mowatt and Bennett, 2011) through open communications (Razani et al., 2018). This was perceived by clients as genuine care and willingness to help (Rogers et al., 2014). Improvements in environmental awareness and knowledge (Hignett et al., 2017; Lopes, 2015), self-esteem (Rogers et al., 2014; Vella et al., 2013; Maund et al., 2019; Godfrey et al., 2015; Cavanaugh and Rademacher, 2014; White et al., 2016; Lopes, 2015), mental health (Razani et al., 2018; Rogers et al., 2014; Vella et al., 2013; Maund et al., 2019), physical health (Maund et al., 2019; Hignett et al., 2017; Fleischmann et al., 2011), social health (de Matos et al., 2017; Hignett et al., 2017; White et al., 2016), and reduced dependency on medicines (Dustin et al., 2011; Fleischmann et al., 2011) and addictive substances (White et al., 2016) were also associated with patient adherence.

Final Programme Theory 4: If communication protocols are in place between service users, prescribers, link workers, and service providers, then BPPs may be more visible and successfully implemented in health and social care facilities.

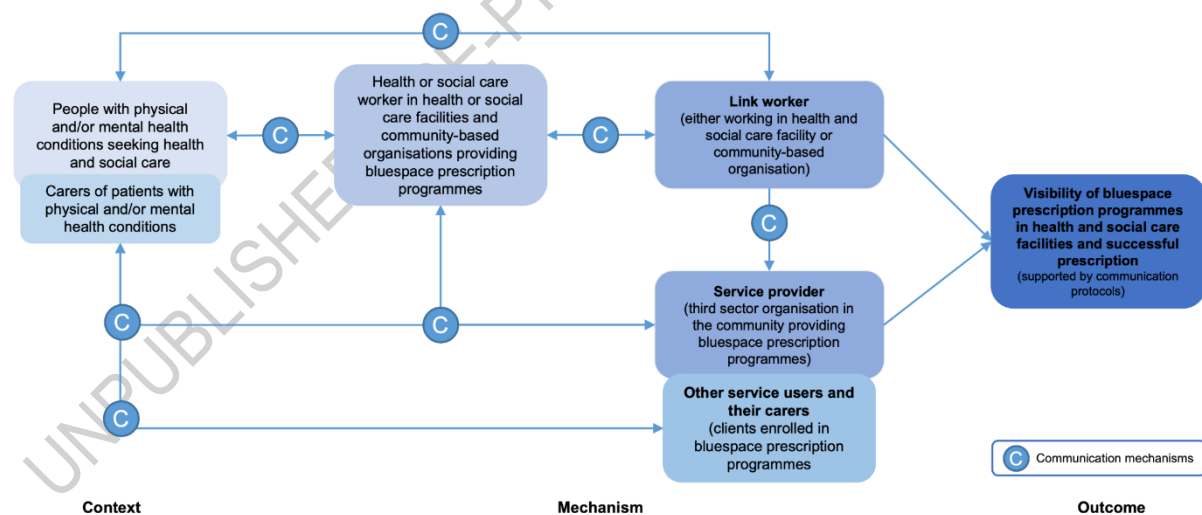


Figure 6. Contextual configuration for communication protocol programme theory

Different communication channels were used within and outside health and social care facilities. Initial presentation of BPPs to prescribers facilitated planning of referral processes, requirements, and responsibilities (James et al., 2017; de Matos et al., 2017). Electronic

communications provided feedback channels to discuss patients' health conditions (James et al., 2017). Champions or advocates of BPPs in health and social care settings acted as programme leads and maintained coordination and programme visibility in health and social care facilities (James et al., 2017). Inclusive communication between health and social care workers, patients, and service providers facilitated by link workers and considered patient-preferred mechanisms and related attributes (Razani et al., 2018; James et al., 2017; Mowatt and Bennett, 2011) were also associated with health improvements (Rogers et al., 2014). Communications between patients and carers provided spaces for awareness raising and socialisation (Lopes, 2015). Socialisation between patients through interest-based grouping and matching also contributed to self-improvement (Razani et al., 2018; Rogers et al., 2014; James et al., 2017; de Matos et al., 2017; Lopes, 2015; Mowatt and Bennett, 2011).

Final Programme Theory 5: If BPPs are supported by organisational, stakeholder, funding, and policy interventions, then these are more likely to be sustainably implemented.

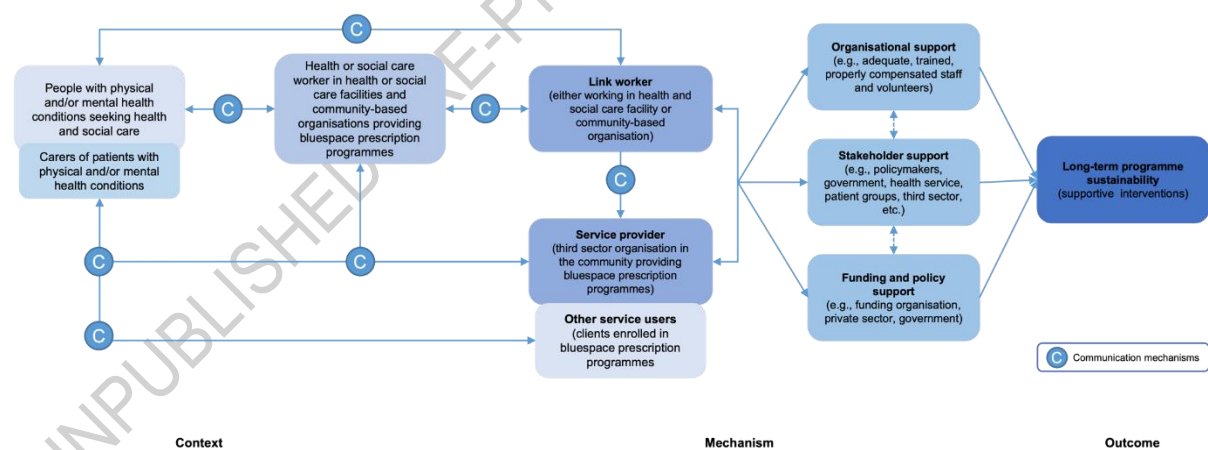


Figure 7. Contextual configuration for long-term programme sustainability programme theory

Surfing was perceived as a beneficial health and social care intervention by health sector stakeholders, general public, and policymakers (Lopes, 2015). The health and social benefits of BPPs convinced funders, councils, and schools to support the programme (Hignett

et al., 2017), especially because the cost of therapeutic surfing (£50/session) was less than the mental healthcare cost for young people (£265/year) (de Matos et al., 2017; Knapp et al., 2011). However, this economic evaluation was not robust (de Matos et al., 2017). Many BPPs were created through health and CBO partnerships (James et al., 2017; Dustin et al., 2011). Other BPPs received financial support from funding institutions (Godfrey et al., 2015; Hignett et al., 2017). Shared resources covered many implementation aspects (e.g., meals, transportation, equipment) making BPPs accessible to service users (Godfrey et al., 2015; James et al., 2017; Hignett et al., 2017; Lopes, 2015; Bennett et al., 2014). Adequate skilled staff and volunteers were the backbones of BPPs. Client-provider ratio depended on participant intake, activities, and financial capacity (Maund et al., 2019; Godfrey et al., 2015; James et al., 2017; de Matos et al., 2017; Cavanaugh and Rademacher, 2014).

Discussion

Bluespace Prescription Programme (BPP) implemented in health and social care facilities contextualised by programme theories on patient enrolment, engagement, adherence, communication protocol, and programme sustainability had benefits on general, physical, mental, social health, and ecological knowledge of service users. These programme theories were shaped by configurations of contextual factors on patient needs and characteristics, accessibility, compatibility, social and blue space environments, skills and values of service providers, patient health improvement, communication, multi-stakeholder partnership, financing, and policy.

Outcomes investigated in this review are consistent with current evidence demonstrating that exposure to blue spaces has physical and mental health benefits (Völker and Kistemann, 2011; Gascon et al., 2017). Additionally, some BPPs had educational activities about the environment and these improved participants' knowledge about the value of blue

spaces and paved way for the development of pro-environmental behaviours (White et al., 2020). BPPs package the health-promoting impacts of blue spaces into structured health and social care programmes for those who could most benefit from these. From a behaviour change perspective (Michie et al., 2011), improving the quality and accessibility of blue spaces could provide greater opportunities for contact with these environments (White et al., 2020). However, these environmental modifications should be coupled with capability-building (knowledge sharing) and motivational strategies (social support) to promote and sustain contact with natural settings (Sharma et al., 2020), such as blue spaces.

BPPs target individuals' motivations to increase utilisation of blue spaces for physical or social activities (Depledge and Bird, 2009; Britton et al., 2020). However, BPPs might not be for everyone as environmental and personal circumstances are associated with engagement (White et al., 2020). Medicalisation of spending time in nature could be perceived as a medical order rather than a personal choice (Tester-Jones et al., 2020). Prescribing specific blue spaces could reduce patients' intrinsic motivation to visit nature, thus compromising its health benefits (Tester-Jones et al., 2020). Patient autonomy (Varkey, 2021) through a patient-centred approach using motivational interview should be considered in selecting BSAs which are compatible with patients' health and personal needs (Britten et al., 2000; Little et al., 2001; Cockburn and Pit, 1997). The investigated BPPs in this review had higher duration than the 120 minutes per week recommended dose of nature (White et al., 2019). However, duration could be a modifying factor for nature engagement (White et al., 2020). Duration of BPPs should be matched with patients' gender (Alejandre and Lynch, 2020; Vert et al., 2019; Elliott et al., 2018), age (Alejandre and Lynch, 2020; Garrett et al., 2019; Helbich et al., 2019; Dempsey et al., 2018), ethnicity (Leeworthy, 2001; Wolch and Zhang, 2004), and health conditions (Wood et al., 2016; Amoly et al., 2014). Increasing choices for BSAs such as dragon boating (Britton et al., 2020), recreational SCUBA diving (Dimmock, 2009), open water

swimming (van Tulleken et al., 2018; Huttunen et al., 2004), and cycling near blue spaces (Roberts et al., 2018; Mackay and Neill, 2010; Pretty et al., 2007) could promote inclusivity and attract enrolment and engagement of many individuals with different personal characteristics and health needs. Engagement with and adherence to BPPs could be facilitated by positive doctor-patient interaction because it promotes patient's self-confidence, motivation, and optimism (Ha and Longnecker, 2010). However, in one systematic review, only six studies had healthcare professionals prescribing BSAs (Britton et al., 2020). Some BSAs are prescribed by a team of health and social care workers with different backgrounds, specialisations, and expertise. Appropriateness training of prescribers is an SP barrier (Britton et al., 2020), thus, health and social care professionals with varied backgrounds and skill sets should be provided with needs-based and standardised trainings on delivery protocols.

Realist reviews on general social prescribing and greenspace programmes highlighted doctor-patient relationship, capacity of service providers, and supportive social environments as contextual factors to implementation (Husk et al., 2020; Masterton et al., 2020), these were also highlighted in our review. Additionally, communication protocols, stakeholder collaboration, and policy support are fundamental programme-related factors associated with programme continuity (Masterton et al., 2020; McHale et al., 2020). Communication protocols between prescribers, link workers, and service providers facilitated by written prescriptions were essential elements of the referral pathways (Husk et al., 2020). England's National Health Service backs the link worker-based model (NHS England, 2019) because link workers support healthcare delivery by facilitating resolutions for patient's health concerns (Husk et al., 2020; Bertotti et al., 2018) through motivational counselling and by coordinating referrals between prescribers, patients, and service providers (Bickerdike et al., 2017; Chatterjee et al., 2018; Bertotti et al., 2018). Moreover, written prescriptions increased likelihood of patient enrolment because these were perceived as alternative to pharmaceutical prescriptions (McHale et al.,

2020; Dempster et al., 2015). Many BPPs are also formed through health and stakeholder partnerships which are funding dependent. Unstable funding affects sustained SP organisation and delivery (Bertotti et al., 2018). There is also a perceived risk in data sharing between healthcare facilities and CBOs. Policies on institutionalising BPPs in government-funded health services and data sharing agreement between stakeholders are necessary. Moreover, medicalising ecosystem services of blue spaces could go against some ecological paradigms (Ofiara and Brown, 1999) within the scope of the environment sector. BSAs could cause disturbances to fish and other wildlife, human-induced pollution, and other irreversible ecosystem degradation (Maxwell et al., 2018; Burgin and Hardiman, 2011; Graham and Cooke, 2008; Davenport and Davenport, 2006). The ethical principles of beneficence and nonmaleficence (Varkey, 2021) should be extended for the protection of nature by involving healthcare specialists, environmentalists, patient groups, and blue space communities in planning and implementing BPPs that aims for the protection of patients and the environment.

In the context of the COVID-19 pandemic, the health-related use of outdoor environments increased during lockdowns (Hartig et al., 2014; Hubbard et al., 2021; Geng et al., 2021) suggesting that outdoor settings such as blue spaces helped people cope with stress (Heo et al., 2020). People in Scotland and Spain associated exposure to nature with mental health improvements and better sleep quality (Hartig et al., 2014; Corley et al., 2021). Contact with nature is associated with fewer mental and physical symptoms and may buffer the impacts of social isolation (Yang et al., 2021; Bratman et al., 2019; Van den Berg et al., 2015). BPPs could be used as an additional healthcare service to help the health sector meet increasing demands for mental healthcare. Link workers could facilitate BPPs through virtual health assessments and motivational interviewing (Razai et al., 2020). However, accessibility, safety, and financial concerns were also associated with less time and fewer visits in blue spaces (Astell-Burt and Feng, 2021) which should be considered and resolved. A siloed approach in

tackling the mental health epidemic compounded by lockdowns and social isolation will not work as we transition to a ‘better normal’ after the COVID-19 pandemic. Approaches should include strong collaboration between health, environment, urban planning, third sector, amongst others to share more resources toward integrating BPPs in primary healthcare with appropriate environmental-economic accounting (United Nations-Food and Agriculture Organisation, European Union, Organisation for Economic Co-operation and Development, and World Bank Group, 2014). These collaborations and resources should ensure that contextual factors influencing enrolment, engagement, and adherence to BPPs are addressed along with effective communication and programme continuity.

Strengths and limitations

We did not include grey literature and we only focused on BPPs prescribed in health and social care settings. Reports on BPPs in other facilities which are unpublished or not peer-reviewed could provide more information about other contextual factors and mechanisms of implementation. There were also limitations on the quality of individual studies. Many quantitative studies had quality issues on the strategies for controlling confounders and reporting variance estimates, whilst qualitative papers had issues on strategies for data collection, verification, and reflexivity.

Certain limitations are also anchored in employing a realist review. Realist synthesis is interpretative and subjective in nature (Masterton et al., 2020), especially in interpreting how contextual factors inform the development of programme theories. We ensured to remove this subjectivity bias by validating the results of the analysis during a series of stakeholders’ meetings and consultation with a multidisciplinary set of co-authors that informed the finalisation of the programme theories for BPP implementation. We were also limited on the available information about the contexts and mechanisms of each bluespace prescription

programme in each study, especially when there is no detailed information about the intervention.

Geographical homogeneity was also a limitation. Some studies had participants from different ethnicities and sociodemographic backgrounds, but all studies were conducted in the Global North. Nonetheless, our study offers pragmatic recommendations for policy development supporting BPP implementation in different contexts. In the context of Global South countries, it is important to be cognisant of the political and social constructs surrounding blue space accessibility and the readiness of health systems for large-scale BPP implementation. Nevertheless, universal healthcare reforms in developing countries could leverage the groundwork on BPP integration in health promotion strategies to deliver the vision of healthy, liveable, and sustainable environments for all.

Research directions

We suggest the conduct of intervention studies examining the intersection of BPPs, physical, and mental health as cost-effective programmes. Implementation research and pilot studies are needed to establish the ‘proof of concept’ of BPPs as a viable public health intervention for scaling-up and institutionalisation in national and local health and social care systems. Causation and long-term implications of BPPs on population health, healthcare delivery, and the environment should be investigated through randomised controlled trials and longitudinal studies.

Conclusion

In summary, this realist review demonstrates that health, social care, and health-trained professionals working in health, social care, and specialised educational facilities provided referral to or prescription of BSAs. Service users of BPPs were veterans, adults, older people, and children who experienced physical and mental health conditions, social isolation,

addiction, and/or behavioural issues. BPPs improved the physical, mental, and social health, as well as environmental knowledge of service users. The implementation of BPPs is associated with 20 unique patient and programme-related contextual factors on patient needs and characteristics, accessibility, compatibility, social and blue space environments, skills and values of service providers, patient health improvement, communication, multi-stakeholder partnership, financing, and policy. The configurations of these contextual factors informed the refinement of pre-existing social prescribing programme theories for the development of programme theories of BPPs. If implementation of accessible and patient centred BPPs is sustainably supported by multi-stakeholder partnerships, funding, policy interventions, effective communication protocols, skilled health and social care workers and service providers, then service users are more likely to enrol in, engage with, adhere to, and have improvements to health and environmental knowledge after the programme. Contextual factors and programme theories of investigated BPPs could inform development and implementation of similar nature-based social prescribing programmes in other contexts. BPPs could be an additional health and social care service that promote exposure to blue spaces for public health promotion and health improvement of individuals with multiple and long-term health conditions. With inaccessibility, long waiting list, adverse effects, incompatibility, cost, and environmental impacts of conventional healthcare, integrating patient centred and sustainable BPPs into a suite of healthcare services is beneficial.

Funding: This systematic review was funded by the Scottish Government Hydro Nation Scholars Programme.

Declaration of competing interests

We declare no competing interests.

Data sharing

Beginning three months after publication until September 2023, database records and extracted data from included studies will be electronically shared to researchers who provide a methodologically sound proposal sent to the corresponding author. The request will be approved by the corresponding author and the director of studies.

Acknowledgments

The corresponding author acknowledges funding from the Hydro Nation Scholars Programme of the Scottish Government. Author KNI [retracted for anonymity] acknowledges funding from the Scottish Government's Rural and Environment Science and Analytical Services Division (RESAS). We would like to thank the Blue-Green Prescribing Reviewers Group composed of 11 researchers: A Estandarte (France); A San Buenaventura, MLA Vega, MAR Manalili, PJ Algonos (Philippines); A Konapur, R Ungarala, S Medithi (India); C Lewnet, K Munro (United Kingdom); and V Ashipala (Namibia).

References

- Agarwal R, Aggarwal AN, Gupta D. Efficacy and safety of conventional transbronchial needle aspiration in sarcoidosis: a systematic review and meta-analysis. *Respiratory Care* 2013; **58**(4): 683–93. DOI 10.4187/respca.02101 (accessed Aug 7, 2021)
- Alejandre JC, Lynch M. “Kids Get in Shape with Nature”: A Systematic Review Exploring the Impact of Green Spaces on Childhood Obesity. *J Nutr Sci Vitaminol* 2020; **66**(Supplement): S129–33. DOI: 10.3177/jnsv.66.S129 (accessed Mar 31, 2021)
- Amoly E, Dadvand P, Fornes J, et al. Green and blue spaces and behavioral development in Barcelona schoolchildren: the BREATHE project. *Environ Health Perspect* 2014; **122**(12): 1351–8. DOI: 10.1289/ehp.1408215 (accessed Mar 30, 2021)

- Astell-Burt T, Feng X. Time for ‘Green’ during COVID-19? Inequities in Green and Blue Space Access, Visitation and Felt Benefits. *Int J Environ Res Public Health* 2021; **18**(5): 2757. DOI: 10.3390/ijerph18052757 (accessed Mar 21, 2021)
- Bennett JL, Van Puymbroeck M, Piatt JA, Rydell RJ. Veterans' perceptions of benefits and important program components of a therapeutic fly-fishing program. *Ther Recreation J* 2014; **48**(2): 169. <https://www.proquest.com/docview/1553177176?pq-origsite=gscholar&fromopenview=true> (accessed Aug 1, 2020)
- Benton JS, Cotterill S, Anderson J, et al. A natural experimental study of improvements along an urban canal: impact on canal usage, physical activity and other wellbeing behaviours. *Int J Behav Nutr Phys Act* 2021; **18**(1): 1–6. DOI: 10.1186/s12966-021-01088-w (accessed Aug 1, 2021)
- Berg RC, Nanavati J. Realist review: current practice and future prospects. *J Res Prac* 2016; **12**(1): R1-R1. <http://jrp.icaap.org/index.php/jrp/article/view/538/449>
- Bertotti M, Frostick C, Hutt P, Sohanpal R, Carnes D. A realist evaluation of social prescribing: an exploration into the context and mechanisms underpinning a pathway linking primary care with the voluntary sector. *Prim Health Care Res Dev* 2018; **19**(3): 232–45. DOI: 10.1017/S1463423617000706 (accessed Apr 21, 2021)
- Bickerdike L, Booth A, Wilson PM, Farley K, Wright K. Social prescribing: less rhetoric and more reality. A systematic review of the evidence. *BMJ Open* 2017; **7**(4). DOI: 10.1136/bmjopen-2016-013384 (accessed Apr 21, 2021)
- Bratman GN, Anderson CB, Berman MG, Cochran B, de Vries S, Flanders J, et al. Nature and mental health: An ecosystem service perspective. *Sci Adv* 2019; **5**(7): eaax0903. DOI: 10.1126/sciadv.aax0903 (accessed Mar 21, 2021)

- Britten N, Stevenson FA, Barry CA, Barber N, Bradley CP. Misunderstandings in prescribing decisions in general practice: qualitative study. *BMJ* 2000; **320**(7233): 484–8. DOI: 10.1136/bmj.320.7233.484 (accessed Mar 23, 2021)
- Britton E, Kindermann G, Domegan C, Carlin C. Blue care: a systematic review of blue space interventions for health and wellbeing. *Health Promot Int* 2020; **35**(1): 50–69. DOI: 10.1093/heapro/day103 (accessed Apr 21, 2021)
- Buckley RC, Brough P. Nature, eco, and adventure therapies for mental health and chronic disease. *Front Public Health* 2017; **5**: 220. DOI: 10.3389/fpubh.2017.00220 (accessed Apr 21, 2021)
- Burgin S, Hardiman N. The direct physical, chemical and biotic impacts on Australian coastal waters due to recreational boating. *Biodivers Conserv* 2011; **20**(4): 683–701. DOI: 10.1007/s10531-011-0003-6 (accessed Mar 21, 2021)
- Cavanaugh LK, Rademacher SB. How a SURFing Social Skills Curriculum Can Impact Children with Autism Spectrum Disorders. *Int J Spec Educ* 2014; **15**(1).
- Chatterjee HJ, Camic PM, Lockyer B, Thomson LJ. Non-clinical community interventions: a systematised review of social prescribing schemes. *Arts Health* 2018; **10**(2): 97–123. DOI: 10.1080/17533015.2017.1334002 (accessed Apr 21, 2021)
- Cockburn J, Pit S. Prescribing behaviour in clinical practice: patients' expectations and doctors' perceptions of patients' expectations—a questionnaire study. *BMJ* 1997; **315**(7107): 520–3. DOI: 10.1136/bmj.315.7107.520 (accessed Mar 22, 2021)
- Corley J, Okely JA, Taylor AM, et al. Home garden use during COVID-19: Associations with physical and mental wellbeing in older adults. *J Environ Psychol* 2021; **73**:101545. DOI: 10.1016/j.jenvp.2020.101545 (accessed May 1, 2021)

- Davenport J, Davenport JL. The impact of tourism and personal leisure transport on coastal environments: A review. *Estuar Coast Shelf Sci* 2006; **67**(1–2): 280–92. DOI: 10.1016/j.ecss.2005.11.026 (accessed Mar 21, 2021)
- de Matos MG, Santos AC, Fauvelet C, et al. Surfing for social integration: mental health and well-being promotion through surf therapy among institutionalized young people. *HSOA J Community Med Public Health Care* 2017; **4**(1): 1–6. DOI: 10.24966/CMPH-1978/100026 (accessed Aug 1, 2020)
- Dempsey S, Devine MT, Gillespie T, Lyons S, Nolan A. Coastal blue space and depression in older adults. *Health Place* 2018; **54**: 110–7. DOI: 10.1016/j.healthplace.2018.09.002 (accessed Mar 23, 2021)
- Dempster NR, Wildman BG, Duby J. Perception of primary care pediatricians of effectiveness, acceptability, and availability of mental health services. *J Child Health Care* 2015; **19**(2): 195–205. DOI: 10.1177/1367493513503585 (accessed Mar 21, 2021)
- Depledge MH, Bird WJ. The Blue Gym: health and wellbeing from our coasts. *Mar Pollut Bull* 2009; **58**(7): 947–8. DOI: 10.1016/j.marpolbul.2009.04.019 (accessed Apr 21, 2021)
- Dimmock K. Finding comfort in adventure: Experiences of recreational SCUBA divers. *Leis Stud* 2009; **28**(3): 279–95. DOI: 10.1080/02614360902951674 (accessed Mar 30, 2021)
- Dustin D, Bricker N, Arave J, Wall W, Wendt G. The promise of river running as a therapeutic medium for veterans coping with post-traumatic stress disorder. *Ther Recreation J* 2011; **45**(4): 326. https://bctra.org/wp-content/uploads/tr_journals/2439-9558-1-PB.pdf (accessed Aug 1, 2021)
- Elliott LR, White MP, Grellier J, Rees SE, Waters RD, Fleming LE. Recreational visits to marine and coastal environments in England: Where, what, who, why, and when? *Mar Policy* 2018; **97**: 305–14. DOI: 10.1016/j.marpol.2018.03.013 (accessed Mar 23, 2021)

- Fereday J, Muir-Cochrane E. Demonstrating rigor using thematic analysis: A hybrid approach of inductive and deductive coding and theme development. *Int J Qual Methods* 2006; **5**(1): 80–92. DOI: 10.1177/160940690600500107 (accessed Apr 21, 2021)
- Finlay J, Franke T, McKay H, Sims-Gould J. Therapeutic landscapes and wellbeing in later life: Impacts of blue and green spaces for older adults. *Health Place* 2015; **34**: 97–106. DOI: 10.1016/j.healthplace.2015.05.001 (accessed Apr 21, 2021)
- Fleischmann D, Michalewicz B, Stedje-Larsen E, et al. Surf medicine: Surfing as a means of therapy for combat-related polytrauma. *J Prosthet Orthot* 2011; **23**(1): 27–9. DOI: 10.1097/JPO.0b013e3182065316 (accessed Aug 1, 2020)
- Garrett JK, White MP, Huang J, et al. Urban blue space and health and wellbeing in Hong Kong: Results from a survey of older adults. *Health Place* 2019; **55**: 100–10. DOI: 10.1016/j.healthplace.2018.11.003 (accessed Mar 21, 2021)
- Gascon M, Zijlema W, Vert C, White MP, Nieuwenhuijsen MJ. Outdoor blue spaces, human health and well-being: A systematic review of quantitative studies. *Int J Hyg Environ Health* 2017; **220**(8): 1207–21. DOI: 10.1016/j.ijheh.2017.08.004 (accessed Apr 21, 2021)
- Geng DC, Innes J, Wu W, Wang G. Impacts of COVID-19 pandemic on urban park visitation: a global analysis. *J For Res* 2021; **32**(2): 553–67. DOI: 10.1007/s11676-020-01249-w (accessed Mar 23, 2021)
- Georgiou M, Morison G, Smith N, Tiegies Z, Chastin S. Mechanisms of Impact of Blue Spaces on Human Health: A Systematic Literature Review and Meta-Analysis. *Int J Environ Res Public Health* 2021; **18**(5): 2486. DOI: 10.3390/ijerph18052486 (accessed Jul 7, 2021)
- Godfrey C, Devine-Wright H, Taylor J. The positive impact of structured surfing courses on the wellbeing of vulnerable young people. *Community Pract* 2015; **88**(1): 26–9. <https://pubmed.ncbi.nlm.nih.gov/26357740/> (accessed Aug 1, 2020)

- Graham AL, Cooke SJ. The effects of noise disturbance from various recreational boating activities common to inland waters on the cardiac physiology of a freshwater fish, the largemouth bass (*Micropterus salmoides*). *Aquat Conserv* 2008; **18**(7): 1315–24. DOI: 10.1002/aqc.941 (accessed Mar 21, 2021)
- Ha JF, Longnecker N. Doctor-patient communication: a review. *Ochsner J* 2010; **10**(1): 38–43. www.ochsnerjournal.org/content/ochjnl/10/1/38.full.pdf (accessed Mar 21, 2021)
- Hartig T, Mitchell R, de Vries S, Frumkin H. Nature and Health. *Annu Rev Public Health* 2014; **35**: 207–28. DOI: 10.1146/annurev-pubhealth-032013-182443 (accessed Aug 10, 2021)
- Helbich M, Yao Y, Liu Y, Zhang J, Liu P, Wang R. Using deep learning to examine street view green and blue spaces and their associations with geriatric depression in Beijing, China. *Environ Int* 2019; **126**: 107–17. DOI: 10.1016/j.envint.2019.02.013 (accessed Mar 21, 2021)
- Heo S, Lim CC, Bell ML. Relationships between Local Green Space and Human Mobility Patterns during COVID-19 for Maryland and California, USA. *Sustainability* 2020; **12**(22): 9401. DOI: 10.3390/su12229401 (accessed Mar 21, 2021)
- Hignett A, White MP, Pahl S, Jenkin R, Froy ML. Evaluation of a surfing programme designed to increase personal well-being and connectedness to the natural environment among ‘at risk’ young people. *J Adventure Educ Outdoor Lear* 2017; **18**(1): 53–69. DOI: 10.1080/14729679.2017.1326829 (accessed Aug 1, 2020)
- Hubbard G, Daas CD, Johnston M, Murchie P, Thompson CW, Dixon D. Are Rurality, Area Deprivation, Access to Outside Space, and Green Space Associated with Mental Health during the COVID-19 Pandemic? A Cross Sectional Study (CHARIS-E). *Int J Environ Res Public Health* 2021; **18**(8): 3869. DOI: 10.3390/ijerph18083869 (accessed May 1, 2021)

- Husk K, Blockley K, Lovell R, et al. What approaches to social prescribing work, for whom, and in what circumstances? A realist review. *Health Soc Care Community* 2020; **28**(2): 309–24. DOI: 10.1111/hsc.12839 (accessed Apr 7, 2021)
- Huttunen P, Kokko L, Ylijukuri V. Winter swimming improves general well-being. *Int J Circumpolar Health* 2004; **63**(2): 140–4. DOI: 10.3402/ijch.v63i2.17700 (accessed Mar 30, 2021)
- Jalali S, Wohlin C. Systematic literature studies: database searches vs. backward snowballing. In: *Proceedings of the 2012 ACM-IEEE International Symposium on Empirical Software Engineering and Measurement*. 2012. pp.29–38.
- James AK, Hess P, Perkins ME, Taveras EM, Scirica CS. Prescribing outdoor play: outdoors Rx. *Clin Pediatr* 2017; **56**(6): 519–24. DOI: 10.1177/0009922816677805 (accessed Aug 1, 2020)
- Keniger LE, Gaston KJ, Irvine KN, Fuller RA. What are the benefits of interacting with nature? *Int J Environ Res Public Health* 2013; **10**(3): 913–935. DOI: 10.3390/ijerph10030913 (accessed Aug 10, 2021)
- Kmet LM, Cook LS, Lee RC. *Standard quality assessment criteria for evaluating primary research papers from a variety of fields*. Alberta Heritage Foundation for Medical Research. HTA Initiative #13. 2004.
- Knapp M, McDaid D, Parsonage M. *Mental Health Promotion and Mental Illness Prevention: The Economic Case*. Department of Health London. 2011. 61
- Leavell MA, Leiferman JA, Gascon M, Braddick F, Gonzalez JC, Litt JS. Nature-based social prescribing in urban settings to improve social connectedness and mental well-being: a review. *Curr Environ Health Rep* 2019; **6**(4): 297–308. DOI: 10.1007/s40572-019-00251-7 (accessed Apr 21, 2021)

- Lee L, Packer TL, Tang SH, Girdler S. Self-management education programs for age-related macular degeneration: A systematic review. *Australas J Ageing* 2008; **27**(4): 170–6. DOI: 10.1111/j.1741-6612-2008.00298.x (accessed Apr 21, 2021)
- Leeworthy VR. *Preliminary Estimates from Version 1-6: Coastal Recreation Participation*. US Department of Commerce. 2001.
- Little P, Everitt H, Williamson I, et al. Preferences of patients for patient centred approach to consultation in primary care: observational study. *BMJ* 2001; **322**(7284): 468. DOI: 10.1136/bmj.322.7284.468 (accessed Mar 22, 2021)
- Lopes JT. Adapted surfing as a tool to promote inclusion and rising disability awareness in Portugal. *J Sport Dev* 2015; **3**(5): 4–10. <https://jsfd.wordpress.com/2020/08/lopes.adapated,surfing.inclusion.pdf> (accessed Aug 1, 2020)
- Mackay GJ, Neill JT. The effect of “green exercise” on state anxiety and the role of exercise duration, intensity, and greenness: A quasi-experimental study. *Psychol Sport Exerc* 2010; **11**(3): 238–45. DOI: 10.1016/j.psychsport.2010.01.002 (accessed Mar 29, 2021)
- Maharaj S, Harding R. The needs, models of care, interventions and outcomes of palliative care in the Caribbean: a systematic review of the evidence. *BMC Palliat Care* 2016; **15**(1): 1–20. DOI: 10.1186/s12904-016-0079-6 (accessed Apr 21, 2021)
- Markevych I, Schoierer J, Hartig T, et al. Exploring pathways linking greenspace to health: theoretical and methodological guidance. *Environ Res* 2017; **158**: 301–317. DOI: 10.1016/j.envres.2017.06.028 (accessed Aug 10, 2021)
- Masterton W, Carver H, Parkes T, Park K. Greenspace interventions for mental health in clinical and non-clinical populations: What works, for whom, and in what circumstances? *Health Place* 2020; **64**(102338): 102338. DOI: 10.1016/j.healthplace.2020.102338 (accessed Aug 7, 2021)

- Maund PR, Irvine KN, Reeves J, et al. Wetlands for wellbeing: piloting a nature-based health intervention for the management of anxiety and depression. *Int J Environ Res Public Health* 2019; **16**(22): 4413. DOI: 10.3390/ijerph16224413 (accessed Aug 1, 2020)
- Maxwell RJ, Zolderdo AJ, de Bruijn R, et al. Does motor noise from recreational boats alter parental care behaviour of a nesting freshwater fish? *Aquatic Conserv: Mar Freshw Ecosyst* 2018; **28**: 969–978. DOI: 10.1002/aqc.2915 (accessed Mar 21, 2021)
- McHale S, Pearsons A, Neubeck L, Hanson CL. Green Health Partnerships in Scotland; Pathways for social prescribing and physical activity referral. *Int J Environ Res Public Health* 2020; **17**(18). DOI: 10.3390/ijerph17186832 (accessed Mar 21, 2021)
- Michie S, van Stralen MM, West R. The behaviour change wheel: a new method for characterising and designing behaviour change interventions. *Implement Sci* 2011; **6**(1): 42. <http://www.implementationscience.com/content/6/1/42> (accessed Apr 21, 2021)
- Mowatt RA, Bennett J. Veteran stories, PTSD effects and therapeutic fly-fishing. *Ther Recreation J* 2011; **45**: 286–308.
- NHS England. *The NHS long term plan*. NHS England. 2019. <https://www.longtermplan.nhs.uk/wp-content/uploads/2019/08/nhs-long-term-plan-version-1.2.pdf> (accessed Mar 21, 2021)
- Ofiara DD, Brown B. Assessment of economic losses to recreational activities from 1988 marine pollution events and assessment of economic losses from long-term contamination of fish within New York bight to New Jersey. *Mar Pollut Bull* 1999; **20**(4): 990–1004. DOI: 10.1016/S0025-326X(99)00123-X (accessed Mar 21, 2021)
- Ouzzani M, Hammady H, Fedorowicz Z, Elmagarmid A. Rayyan—a web and mobile app for systematic reviews. *Syst Rev* 2016; **5**(1): 1–0. DOI: 10.1186/s13643-016-0384-4 (accessed Apr 21, 2021)

- Page MJ, McKenzie JE, Bossuyt PM, et al. The PRISMA 2020 statement: an updated guideline for reporting systematic reviews. *BMJ* 2021; **372**. DOI: 10.1136/bmj.n71 (accessed Aug 7, 2021)
- Pawson R, Bellamy JL. Realist synthesis: an explanatory focus for systematic review. In: Popay J, editor. *Moving beyond effectiveness in evidence synthesis*. London: National Institute for Health and Clinical Excellence; 2006. p. 83–93.
- Pawson R, Greenhalgh T, Harvey G, Walshe K. Realist review—a new method of systematic review designed for complex policy interventions. *J Health Serv Res Pol* 2005; **10**(1_suppl): 21–34. DOI: 10.1258/1355819054308530 (accessed Jul 7, 2021)
- Peschery JV, Pappas Y, Randhawa G. Facilitators and barriers of implementing and delivering social prescribing services: a systematic review. *BMC Health Ser Res* 2018; **18**(1): 1–4. DOI: 10.1186/s12913-018-2893-4 (accessed Apr 21, 2021)
- Pilkington K, Loef M, Polley M. Searching for real-world effectiveness of health care innovations: scoping study of social prescribing for diabetes. *J Med Internet Res* 2017; **19**(2): e20. DOI: 10.2196/jmir.6431 (accessed Apr 21, 2021)
- Pouso S, Borja Á, Fleming LE, Gómez-Baggethun E, White MP, Uyarra MC. Contact with blue-green spaces during the COVID-19 pandemic lockdown beneficial for mental health. *Sci Total Environ* 2021; **756**:143984. DOI: 10.1016/j.scitotenv.2020.143984 (accessed Jul 7, 2021)
- Pretty J, Peacock J, Hine R, Sellens M, South N, Griffin M. Green exercise in the UK countryside: Effects on health and psychological well-being, and implications for policy and planning. *J Environ Plan Manag* 2007; **50**(2): 211–31. DOI: 10.1080/09640560601156466 (accessed Mar 29, 2021)

- Razai MS, Oakeshott P, Kankam H, Galea S, Stokes-Lampard H. Mitigating the psychological effects of social isolation during the COVID-19 pandemic. *BMJ* 2020; **369**. DOI: 10.1136/bmj.m1904 (accessed Mar 21, 2021)
- Razani N, Morshed S, Kohn MA, et al. Effect of park prescriptions with and without group visits to parks on stress reduction in low-income parents: SHINE randomized trial. *PLoS One* 2018; **13**(2): e0192921. DOI: 10.1371/journal.pone.0192921 (accessed Aug 1, 2020)
- Roberts L, Jones G, Brooks R. Why Do You Ride?: A Characterization of Mountain Bikers, Their Engagement Methods, and Perceived Links to Mental Health and Well-Being. *Front Psychol* 2018; **9**: 1642. DOI: 10.3389/fpsyg.2018.01642 (accessed Mar 30, 2021)
- Rogers CM, Mallinson T, Peppers D. High-intensity sports for posttraumatic stress disorder and depression: Feasibility study of ocean therapy with veterans of Operation Enduring Freedom and Operation Iraqi Freedom. *Am J of Occup Ther* 2014; **68**(4): 395–404. DOI: 10.5014/ajot/2014.011221 (accessed Aug 1, 2020)
- Rycroft-Malone J, McCormack B, Hutchinson AM, DeCorby K, Bucknall TK, Kent B, et al. Realist synthesis: illustrating the method for implementation research. *Implement Sci* 2012; **7**(1): 33. <https://www.implementationscience.com/content/7/1/33> (accessed Jul 7, 2021)
- Schardt C, Adams MB, Owens T, Keitz S, Fontelo P. Utilization of the PICO framework to improve searching PubMed for clinical questions. *BMC Med Inform Decis Mak* 2007; **7**(1): 1–6. DOI: 10.1186/1472-6947-7-16 (accessed Apr 21, 2021)
- Sharma M, Largo-Wight E, Kanekar A, Kusumoto H, Hooper S, Nahar VK. Using the multi-theory model (MTM) of health behavior change to explain intentional outdoor nature contact behavior among college students. *Int J Environ Res Public Health* 2020; **17**(17): 6104. DOI: 10.3390/pharmacy9030126 (accessed Apr 21, 2021)

- Tester-Jones M, White MP, Elliott LR, et al. Results from an 18 country cross-sectional study examining experiences of nature for people with common mental health disorders. *Sci Rep* 2020; **10**(1): 1–1. DOI: 10.1038/s41598-020-75825-9 (accessed Mar 31, 2021)
- Teuton, J. *Social prescribing for mental health: background paper*. NHS Health Scotland. 2015. www.healthscotland.scot/media/2067/social-prescribing-for-mental-health-background-paper.pdf (accessed Apr 21, 2021)
- Thomas J, Harden A. Methods for the thematic synthesis of qualitative research in systematic reviews. *BMC Med Res Methodol* 2008; **8**(1): 1–0. DOI: 10.1186/1471-2288-8-45 (accessed Apr 21, 2021)
- Tieges Z, McGregor D, Georgiou M, et al. The Impact of Regeneration and Climate Adaptations of Urban Green–Blue Assets on All-Cause Mortality: A 17-Year Longitudinal Study. *Int J Environ Res Public Health* 2020; **17**(12): 4577. DOI: 10.3390/ijerph17124577 (accessed Jul 7, 2021)
- United Nations’ Food and Agriculture Organisation, European Union, Organisation for Economic Co-operation and Development, World Bank Group. *System of Environmental-Economic Accounting 2012–Experimental Ecosystem Accounting*. United Nations. 2014. https://seea.un.org/sites/seea.un.org/files/seea_eea_final_en_1.pdf (accessed Aug 10, 2021)
- Van den Berg M., W. endel-Vos W-VW., Van Poppel M., H. K, Mechelen W., J Met al. Health benefits of green spaces in the living environment: a systematic review of epidemiological studies. *Urban For Urban Green* 2015; **14**: 806–816. DOI: 10.1016/j.ufug.2015.07.008 (accessed Mar 21, 2021)

- van Tulleken C, Tipton M, Massey H, Harper CM. Open water swimming as a treatment for major depressive disorder. *Case Reports* 2018; **2018**: bcr-2018. DOI: 10.1136/bcr-2018-225007 (accessed Mar 30, 2021)
- Varkey B. Principles of clinical ethics and their application to practice. *Med Princ Pract* 2021; 30(1): 17–28. DOI 10.1159/000509119 (accessed Mar 9, 2021)
- Vella EJ, Milligan B, Bennett JL. Participation in outdoor recreation program predicts improved psychosocial well-being among veterans with post-traumatic stress disorder: A pilot study. *Mil Med* 2013; **178**(3): 254–60. DOI: 10.7205/MILMED-D-12-00308 (accessed Aug 1, 2020)
- Vert C, Carrasco-Turigas G, Zijlema W, et al. Impact of a riverside accessibility intervention on use, physical activity, and wellbeing: A mixed methods pre-post evaluation. *Landsc Urban Plan* 2019; **190**: 103611. DOI: 10.1016/j.landurbplan.2019.103611 (accessed Mar 27, 2021)
- Völker S, Kistemann T. The impact of blue space on human health and well-being - Salutogenetic health effects of inland surface waters: a review. *Int J Hyg Environ Health* 2011; **214**(6): 449–60. DOI: 10.1016/j.ijheh.2011.05.001 (accessed Apr 21, 2021)
- White MP, Alcock I, Grellier J, et al. Spending at least 120 minutes a week in nature is associated with good health and wellbeing. *Sci Rep* 2019; **9**(1): 1–1. DOI: 10.1038/s41598-019-44097-3 (accessed Mar 22, 2021)
- White MP, Elliott LR, Gascon M, Roberts B, Fleming LE. Blue space, health and well-being: A narrative overview and synthesis of potential benefits. *Environ Res* 2020; **22**: 110169. DOI: 10.1016/j.envres.2020.110169 (accessed Apr 21, 2021)
- White R, Abraham C, Smith JR, White M, Staiger PK. Recovery under sail: rehabilitation clients' experience of a sail training voyage. *Addict Res Theory* 2016; **24**(5): 355–65. DOI: 10.3109/16066359.2015.1123252 (accessed Aug 1, 2020)

Wolch J, Zhang J. Beach recreation, cultural diversity and attitudes toward nature. *J Leis Res* 2004; **36**(3): 414–43. DOI: 10.1080/00222216.20024.11950030 (accessed Mar 23, 2021)

Wood SL, Demougin PR, Higgins S, Husk K, Wheeler BW, White M. Exploring the relationship between childhood obesity and proximity to the coast: A rural/urban perspective. *Health Place* 2016; **40**: 129–36. DOI: 10.1016/j.healthplace.2016.05.010 (accessed Mar 22, 2021)

Yang Y, Wang L, Passmore H-A, Zhang J, Zhu L, Cai H. Viewing nature scenes reduces the pain of social ostracism. *J Soc Psychol* 2021; **161**(2): 197–215. DOI: 10.1080/00224545.2020.1784826 (accessed May 1, 2021)

UNPUBLISHED PRE-PRINT (NOT PEER-REVIEWED)

Appendix 1. Keywords, search strings, and yielded records from database search

Databases	Keywords and search strings	Yielded records
PubMed	(((((prescri*[tiab]) OR "non-drug prescribing"[tiab]) OR "cognitive therapy"[tiab])) AND (((((((((((((((((((((((blue*[tiab]) OR water*[tiab]) OR river*[tiab]) OR pond[tiab]) OR lake[tiab]) OR sea[tiab]) OR beach[tiab]) OR fountain[tiab]) OR ocean[tiab]) OR coast*[tiab]) OR marin*[tiab]) OR aqua*[tiab]) OR wild*[tiab]) OR marsh*[tiab]) OR shore[tiab]) OR sub-aqua[tiab]) OR riparian[tiab]) OR aqueduct[tiab]) OR surf*[tiab]) OR harbour[tiab]) OR harbor[tiab]) OR swim*[tiab]) OR diving[tiab]) OR snorkel*[tiab]) OR boat*[tiab]) OR fishing[tiab]) OR port[tiab]) OR canal[tiab]) OR kayak*[tiab]) OR canoe*[tiab]) OR sail*[tiab]) OR natur*[tiab]) OR "built environment"[tiab])) AND (((general[tiab]) OR physical[tiab]) OR mental[tiab]) OR psychological[tiab]) OR social[tiab])) AND (((health[tiab]) OR wellbeing[tiab]) OR well-being[tiab])	722
Web of Science	TS=(((prescri* OR "non-drug prescribing") OR "cognitive therapy") AND (((((((((((((((((((((((blue* OR water* OR river* OR pond) OR lake) OR sea) OR beach) OR fountain) OR ocean) OR coast*) OR marin*) OR aqua*) OR wild*) OR marsh*) OR shore) OR sub-aqua) OR riparian) OR aqueduct) OR surf*) OR harbour) OR harbor) OR swim*) OR diving) OR snorkel*) OR boat*) OR fishing) OR port) OR canal) OR kayak*) OR canoe*) OR sail*) OR natur*) OR "built environment")) AND (((general) OR physical) OR mental) OR psychological) OR social)) AND ((health) OR wellbeing) OR well-being)	1,377
Medline	(((((prescri*.ti,ab.) OR non-drug prescribing.ti,ab.) OR cognitive therapy.ti,ab.)) AND (((((((((((((((((((((((blue*.ti,ab.) OR water*.ti,ab.) OR river*.ti,ab.) OR pond.ti,ab.) OR lake.ti,ab.) OR sea.ti,ab.) OR beach.ti,ab.) OR fountain.ti,ab.) OR ocean.ti,ab.) OR coast*.ti,ab.) OR marin*.ti,ab.) OR aqua*.ti,ab.) OR wild*.ti,ab.) OR marsh*.ti,ab.) OR shore.ti,ab.) OR sub-aqua.ti,ab.) OR riparian.ti,ab.) OR aqueduct.ti,ab.) OR surf*.ti,ab.) OR harbour.ti,ab.) OR harbor.ti,ab.) OR swim*.ti,ab.) OR diving.ti,ab.) OR snorkel*.ti,ab.) OR boat*.ti,ab.) OR fishing.ti,ab.) OR port.ti,ab.) OR canal.ti,ab.) OR kayak*.ti,ab.) OR canoe*.ti,ab.) OR sail*.ti,ab.) OR natur*.ti,ab.) OR built environment.ti,ab.)) AND (((general.ti,ab.) OR physical.ti,ab.) OR mental.ti,ab.) OR psychological.ti,ab.) OR social.ti,ab.)) AND (((health.ti,ab.) OR wellbeing.ti,ab.) OR well-being.ti,ab.))	662
CINAHL	(((((TI prescri* OR AB prescri*) OR TI "non-drug prescribing" OR AB "non-drug prescribing") OR TI "cognitive therapy" OR AB "cognitive therapy") AND (((((((((((((((((((((((TI blue* OR AB blue*) OR TI water* OR AB water*) OR TI river* OR AB river*) OR TI pond OR AB pond) OR TI lake OR AB lake) OR TI sea OR AB sea) OR TI beach OR AB beach) OR TI fountain OR AB fountain) OR TI ocean OR AB ocean) OR TI coast* OR AB coast*) OR TI marin* OR AB marin*) OR TI aqua* OR AB aqua*) OR TI wild* OR AB wild*) OR TI marsh* OR AB marsh*) OR TI shore OR AB shore) OR TI sub-aqua OR AB sub-aqua) OR TI riparian OR AB riparian) OR TI aqueduct OR AB aqueduct) OR TI surf* OR AB surf*) OR TI harbour OR AB harbour) OR TI harbor OR AB harbor) OR TI swim* OR AB swim*) OR TI diving OR AB diving) OR TI snorkel* OR AB snorkel*) OR TI boat* OR AB boat*) OR TI fishing OR AB fishing) OR TI port OR AB port) OR TI canal OR AB canal) OR TI kayak* OR AB kayak*) OR TI canoe* OR AB canoe*) OR TI sail* OR AB sail*) OR TI natur* OR AB natur*) OR TI "built environment" OR AB "built environment")) AND (((TI general OR AB general) OR TI physical OR AB physical) OR TI mental OR AB mental) OR TI psychological OR AB psychological) OR TI social OR AB social)) AND (((TI health OR AB health) OR TI wellbeing OR AB wellbeing) OR TI well-being OR AB well-being)	488
PsycInfo	(((((prescri*.ti,ab) OR "non-drug prescribing".ti,ab) OR "cognitive therapy".ti,ab)) AND (((((((((((((((((((((((blue*.ti,ab) OR water*.ti,ab) OR river*.ti,ab) OR pond.ti,ab) OR lake.ti,ab) OR sea.ti,ab) OR beach.ti,ab) OR fountain.ti,ab) OR ocean.ti,ab) OR coast*.ti,ab) OR marin*.ti,ab) OR aqua*.ti,ab) OR wild*.ti,ab) OR marsh*.ti,ab) OR shore.ti,ab) OR sub-aqua.ti,ab) OR riparian.ti,ab) OR aqueduct.ti,ab) OR surf*.ti,ab) OR harbour.ti,ab) OR harbor.ti,ab) OR swim*.ti,ab) OR diving.ti,ab) OR snorkel*.ti,ab) OR boat*.ti,ab) OR fishing.ti,ab) OR port.ti,ab) OR canal.ti,ab) OR kayak*.ti,ab) OR canoe*.ti,ab) OR sail*.ti,ab) OR natur*.ti,ab) OR "built environment".ti,ab)) AND (((general.ti,ab) OR physical.ti,ab) OR mental.ti,ab) OR psychological.ti,ab) OR social.ti,ab)) AND (((health.ti,ab) OR wellbeing.ti,ab) OR well-being.ti,ab)	1,748
Scopus	(((((TITLE-ABS("prescri*") OR TITLE-ABS("non-drug prescribing") OR TITLE-ABS("cognitive therapy")) AND (((((((((((((((((((((((TITLE-ABS("blue*") OR TITLE-ABS("water*") OR TITLE-ABS("river*") OR TITLE-ABS("pond")) OR TITLE-ABS("lake")) OR TITLE-ABS("sea")) OR TITLE-ABS("beach")) OR TITLE-ABS("fountain")) OR TITLE-ABS("ocean")) OR TITLE-ABS("coast*") OR TITLE-ABS("marin*") OR TITLE-ABS("aqua*") OR TITLE-ABS("wild*") OR TITLE-ABS("marsh*") OR TITLE-ABS("shore")) OR TITLE-ABS("sub-aqua")) OR TITLE-ABS("riparian")) OR TITLE-ABS("aqueduct")) OR TITLE-ABS("surf*") OR TITLE-ABS("harbour")) OR TITLE-ABS("harbor")) OR TITLE-ABS("swim*") OR TITLE-ABS("diving")) OR TITLE-ABS("snorkel*") OR TITLE-ABS("boat*") OR TITLE-ABS("fishing")) OR TITLE-ABS("port")) OR TITLE-ABS("canal")) OR TITLE-ABS("kayak*") OR TITLE-ABS("canoe*") OR TITLE-ABS("sail*") OR TITLE-ABS("natur*") OR TITLE-ABS("built environment")) AND (((TITLE-ABS("general")) OR TITLE-ABS("physical")) OR TITLE-ABS("mental")) OR TITLE-ABS("psychological")) OR TITLE-ABS("social")) AND (((TITLE-ABS("health")) OR TITLE-ABS("wellbeing")) OR TITLE-ABS("well-being"))	1,438
	TOTAL	6,435

Appendix 2. List of studies excluded at full-text screening stage with brief reasons

Code No.	Article title	Decision
1	Interagency physical activity and lifestyle education programmes.	Wrong intervention
2	Metabolic monitoring training program implementation in the community setting was associated with improved monitoring in second-generation antipsychotic-treated children.	Wrong intervention
3	'Missing Pieces'-Functional, Social, and Environmental Barriers to Recovery for Vulnerable Older Adults Transitioning from Hospital to Home.	Wrong context
4	Non-medical prescribing and mental health nursing: prominent issues.	Wrong intervention
5	Review: Exercise therapy reduces fatigue in chronic fatigue syndrome.	Wrong research design
6	A review of the clinical evidence for exercise in osteoarthritis of the hip and knee	Wrong research design
7	Determinants of restorative experiences in everyday favorite places	Wrong context
8	Exercise Therapy for Fibromyalgia	Wrong research design
9	Cognitive therapy of depression: Pretreatment patient predictors of outcome	Wrong intervention
10	Neighborhood Environment and Adherence to a Walking Intervention in African American Women	Wrong intervention
11	Consumer responses towards non-prescription and prescription drug advertising in the US and Germany	Wrong intervention
12	Determinants of adherence to exercise in women treated for breast cancer	Wrong intervention
13	Adherence to exercise referral schemes by participants - what do providers and commissioners need to know? A systematic review of barriers and facilitators	Wrong research design
14	Mental health and functional impairment outcomes following a 6-week intensive treatment programme for UK military veterans with post-traumatic stress disorder (PTSD): a naturalistic study to explore dropout and health outcomes at follow-up	Wrong intervention
15	Use of complementary medicinal therapies in West Pomerania: a population-based study	Wrong research design
16	Is brisk walking an adequate aerobic training stimulus for cardiac patients?	Wrong intervention
17	Caregiver perceptions of a fruit and vegetable prescription programme for low-income paediatric patients	Wrong intervention
18	What we know, what we do not know, and where are we heading? Efficacy and acceptability of psychological interventions for depression	Wrong intervention
19	Community Fitness Center-Based Physical Activity Interventions: A Brief Review	Wrong intervention
20	Personalized exercise training in chronic lung diseases	Wrong research design
21	Is Exercise the Right Medicine for Dystrophic Muscle?	Wrong population
22	An Emerging Paradigm for the UNESCO Global Geoparks: The Ecosystem's Health Provision	Wrong context
23	Leisure athletes at risk of medical complications: outcomes of pre-participation screening among 15,778 endurance runners - SAFER VII	Wrong intervention
24	Sex differences in asthma in swimmers and tennis players	Wrong intervention
25	Improving health status through physical activity for individuals with chronic pulmonary diseases	Wrong intervention
26	Non-pharmacological rehabilitation interventions for concussion in children: a scoping review	Wrong intervention
27	Urban Greening and Its Role in Fostering Human Well-Being	Wrong research design
28	Improving the physical health of people prescribed antipsychotic medication in secondary care mental health provider services. AQUA's approach to providing health improvement support in North West England	Wrong intervention
29	Improve Physical Health Indicators and Create a Platform for Exercise Prescription	Not retrieved
30	A higher effort-based paradigm in physical activity and exercise for public health: making the case for a greater emphasis on resistance training.	Wrong intervention
31	Exercise therapy for chronic fatigue syndrome.	Wrong research design
32	Reduced Contact Cognitive-Behavioral Interventions for Adult Depression: A Review.	Wrong intervention
33	Morita Therapy to Treat Depression: When and How to Encourage Patients to Join Activities	Wrong context

34	Safely active mobility for urban baby boomers: The role of neighborhood design.	Wrong intervention
35	The social network as a health support strategy for hypertensive patients	Wrong intervention
36	Clinical and therapeutic characterization of a Portuguese sample of patients with schizophrenia.	Wrong intervention
37	Exploiting system fluctuations. Differential training in physical prevention and rehabilitation programs for health and exercise	Wrong intervention
38	Physiotherapeutic interventions on an outpatient basis for orthopaedic and trauma surgery: can success be recorded?	Wrong intervention
39	Effects of Mindfulness-Based Stress Reduction on employees' mental health: A systematic review	Wrong research design
40	Patients' and therapists' experiences with a new treatment programme for eating disorders that combines physical exercise and dietary therapy: the PED-t trial. A qualitative study protocol	Wrong intervention
41	Basic strategies of cognitive behavioral therapy	Wrong intervention
42	Effectiveness of psychosocial and spiritual interventions in the management of depression	Wrong intervention
43	Randomized Evaluation of Cognitive-Behavioral Therapy and Graded Exercise Therapy for Post-Cancer Fatigue	Wrong intervention
44	Dementia care in general practice. What can the BEACH survey tell us?	Wrong intervention
45	Understanding the effects of the neighbourhood built environment on public health with open data	Wrong intervention
46	Service-users' perspectives of link worker social prescribing: A qualitative follow-up study	Wrong intervention
47	Relationship between exposure to the natural environment and recovery from hip or knee arthroplasty: A New Zealand retrospective cohort study	Wrong intervention
48	Targeting lifestyle energy expenditure in the management of obesity and health: from biology to built environment	Wrong intervention
49	Prescribing physical activity in parks to improve health and wellbeing: Protocol of the park prescription randomized controlled trial	Wrong intervention
50	What approaches to social prescribing work, for whom, and in what circumstances? A protocol for a realist review	Wrong research design
51	"Swimming against the tide" restricting prescribing practices in a prison: A personal journey	Wrong intervention
52	'At-risk' places: Inequities in the distribution of environmental stressors and prescription rates of mental health medications in Glasgow, Scotland	Wrong intervention
53	Policy prescriptions for healthier communities	Wrong intervention
54	Walking for well-being: are group walks in certain types of natural environments better for well-being than group walks in urban environments?.	Wrong intervention
55	Combining self-help and professional help to minimize barriers to physical activity in persons with multiple sclerosis: a trial of the "Blue Prescription" approach in New Zealand.	Wrong intervention
56	Aquatics, health-promoting self-care behaviours and adults with brain injuries.	Wrong intervention
57	Social prescribing in cardiology: rediscovering the nature within us	Wrong intervention
58	Blue Prescription: A single-subject design intervention to enable physical activity for people with stroke.	Wrong intervention
59	Body Mass, Metabolic and Cardiovascular Impact of Aquatic Aerobic Exercise and Nutritional Guidance for Individuals with Chronic Incomplete Spinal Cord Injury (CMISCI)...Aquatic Physical Therapy Section Platforms Presented at APTA's 2017 Combined Sections Meeting in San Antonio, Texas	Wrong intervention
60	Differential effects of water-based exercise on the cognitive function in independent elderly adults.	Wrong intervention
61	Effects of water- and land-based exercise programmes on women experiencing pregnancy-related pelvic girdle pain: a randomized controlled feasibility study	Wrong intervention
62	Exploring the Blue Prescription intervention to promote physical activity in people with long-term conditions	Wrong intervention
63	Shifting Gears: Engaging Nurse Practitioners in Prescribing Time Outdoors	Wrong intervention
64	Social Prescribing: Primary care patient and service user engagement	Wrong intervention
65	The health benefits of the great outdoors: A systematic review and meta- analysis of greenspace exposure and health outcomes	Wrong research design
66	Systematic review and meta-analysis comparing land and aquatic exercise for people with hip or knee arthritis on function, mobility and other health outcomes	Wrong research design
67	Defining greenspace: Multiple uses across multiple disciplines	Wrong intervention
68	Upright water-based exercise to improve cardiovascular and metabolic health: A qualitative review	Wrong research design
69	Implications of the modifiable areal unit problem for assessing built environment correlates of moderate and vigorous physical activity	Wrong intervention

70	The feasibility and short-term benefits of Blue Prescription: a novel intervention to enable physical activity for people with multiple sclerosis	Wrong intervention
71	From Green Space to Green Prescriptions: Challenges and Opportunities for Research and Practice	Wrong intervention
73	Images of nature in relation to mood modifying medicines: a user perspective	Wrong intervention
74	Conservation of Wetlands and Other Coastal Ecosystems: a Commentary on their Value to Protect Biodiversity, Reduce Disaster Impacts, and Promote Human Health and Well-Being	Wrong context
75	A historical and critical analysis of park prescriptions	Wrong intervention
76	Garden therapy in neurorehabilitation: well-being and skills improvement	Wrong intervention
77	The Association of Knowledge, Attitudes and Access with Park Use before and after a Park-Prescription Intervention for Low-Income Families in the US	Wrong intervention
78	Residential greenspace is associated with mental health via intertwined capacity-building and capacity-restoring pathways	Wrong intervention
79	Measuring Biophysical and Psychological Stress Levels Following Visitation to Three Locations with Differing Levels of Nature	Wrong research design
80	Comparisons of the Health Benefits of Strength Training, Aqua-Fitness, and Aerobic Exercise for the Elderly	Wrong context
82	Perceptions of Nature and Access to Green Space in Four Urban Neighborhoods.	Wrong intervention
83	Prescription of physical activity by general practitioners: The Biarritz Côte Basque Sport Santé experience	Not in English
84	Arts and cultural activity: A vital part of the health and care system.	Wrong intervention
85	Design and evaluation of a park prescription program for stress reduction and health promotion in low-income families: The Stay Healthy in Nature Everyday (SHINE) study protocol.	Wrong research design
86	The influence of different types of bathes for general health on the efficiency of combined spa and resort treatment of coronary heart disease	Wrong intervention
87	Environmental preference might mediate the benefits of nature-based therapies	Wrong research design
88	Play Therapy in Residential Treatment Centers for Children	Wrong intervention
90	Special Issue: Art Therapy and Disability Studies	Wrong research design
91	Efficacy of nature-based therapy for individuals with stress-related illnesses: randomised controlled trial	Wrong intervention
92	A Long-Term Follow-Up of the Efficacy of Nature-Based Therapy for Adults Suffering from Stress-Related Illnesses on Levels of Healthcare Consumption and Sick-Leave Absence: A Randomized Controlled Trial	Wrong intervention
93	Music in, as, or for therapy	Wrong intervention
94	Effects of horticultural therapy on elderly' health: protocol of a randomized controlled trial	Wrong intervention
95	Research note: Natural environments and prescribing in England	Wrong intervention
96	AB1108-HPR Aquatic Exercise for Women with Persistent Knee Pain. A Pilot Randomised Controlled Trial	Wrong intervention
97	Research note: Urban street tree density and antidepressant prescription rates-A cross-sectional study in London, UK	Wrong intervention
98	The 'taking place' of health and wellbeing: Towards non-representational theory	Wrong intervention
99	Salivary Cortisol in an Extreme Non-Competitive Sport Exercise: Winter Swimming	Wrong context
100	Editorial: Therapeutic lifestyle changes (TLCs) and mental health	Wrong research design
101	Forest experience and psychological health benefits: the state of the art and future prospect in Korea	Wrong context
102	Hortitherapy - complementary method in physiotherapy	Wrong intervention
103	Horticultural therapy: The 'healing garden' and gardening in rehabilitation measures at Danderyd Hospital Rehabilitation Clinic, Sweden	Wrong intervention
104	Nature-Based Therapy: Its Potential as a Complementary Approach to Treating Communication Disorders	Wrong intervention
105	Adventure therapy: a mental health promotion strategy in pediatric oncology.	Wrong research design
106	Effectiveness of prescribing physical activity in parks to improve health and wellbeing-the park prescription randomized controlled trial	Wrong intervention
107	If people are attached to plants, do they love other people? case of the Russian youth	Wrong intervention
108	Diving and mental health: the potential benefits and risks from a survey of recreational scuba divers	Wrong context

109	Nature-Based Social Prescribing in Urban Settings to Improve Social Connectedness and Mental Well-being: a Review	Wrong research design
110	Walking green: Developing an evidence base for nature prescriptions	Wrong intervention
111	Subtypes of park use and self-reported psychological benefits among older adults: A multilevel latent class analysis approach	Wrong context
112	A smartphone app for improving mental health through connecting with urban nature	Wrong context
113	Working out what works: The role of tacit knowledge where urban greenspace research, policy and practice intersect	Wrong intervention
114	A narrative and systematic review of the behavioural, cognitive and emotional effects of passive nature exposure on young people: Evidence for prescribing change	Wrong research design
115	Arts for the Blues – a new creative psychological therapy for depression: a pilot workshop report	Wrong intervention
116	Nature RX: Reemergence of pediatric nature-based therapeutic programs from the late 19th and early 20th centuries	Wrong research design
117	Identifying and resisting the technological drift: green space, blue space and ecotherapy	Wrong research design
118	The “healthy dose” of nature: A cautionary tale	Wrong research design
119	Falls in geriatric populations and hydrotherapy as an intervention: A brief review	Wrong research design
120	Like a Fish out of Water: Managing Chronic Pain in the Urban Safety Net	Wrong intervention
121	Cognitive benefits of walking in natural versus built environments	Wrong intervention
122	Patient uptake and adherence to social prescribing: A qualitative study	Wrong intervention
123	More green space is related to less antidepressant prescription rates in the Netherlands: A Bayesian geospatial quantile regression approach	Wrong intervention
124	Growing spaces: an evaluation of the mental health recovery programme using mixed methods	Wrong intervention
125	Exercise Prescription for a Healthy Heart	Wrong intervention
126	Hiking: A Low-Cost, Accessible Intervention to Promote Health Benefits	Wrong research design
127	A prescription for “nature” – The potential of using virtual nature in therapeutics	Wrong intervention
128	The adventure therapy experience scale: The psychometric properties of a scale to measure the unique factors moderating an adventure therapy experience	Wrong intervention
129	When Pediatric Primary Care Providers Prescribe Nature Engagement at a State Park, Do Children “fill” the Prescription?	Wrong intervention
130	Multiple health benefits of urban tree canopy: The mounting evidence for a green prescription	Wrong intervention
131	Prescribing Nature Therapy for Improved Mental Health	Wrong intervention
132	Promoting nature-based activity for people with mental illness through the US “exercise is medicine” initiative	Wrong research design
133	What is green care? Introduction, history, and origins	Wrong research design
134	Swimming as exercise prescription for breast cancer patients	Wrong research design
135	Oceans and human health in the Caribbean region	Wrong intervention
136	Participant perceptions of a novel physiotherapy approach (“Blue Prescription”) for increasing levels of physical activity in people with multiple sclerosis: A qualitative study following intervention	Wrong intervention
137	A study on management system design of swimming exercise prescription by using fussy ANP	Wrong intervention
138	Interagency oceans and human health research implementation plan: A prescription for the future	Wrong research design
139	The sense of self inside and environments outside: how the two grow together and become one in healthy psychological development	Wrong intervention
S1	A cohort study relating urban green space with mortality in Ontario, Canada	Wrong context
S2	A comparison of four typical green exercise environments and prediction of psychological health outcomes	Wrong context
S3	A comparison of green space indicators for epidemiological research	Wrong intervention
S4	A cross-sectional analysis of the effects of residential greenness on blood pressure in 10-year old children: Results from the ginipus and lisaplus studies	Wrong intervention
S5	A day trip to a forest park increases human natural killer activity and the expression of anti-cancer proteins in male subjects	Not retrieved
S6	A forest bathing trip increases human natural killer activity and expression of anti-cancer proteins in female subjects	Wrong intervention

S7	A Large Cross-Sectional Study of Health Attitudes, Knowledge, Behaviour and Risks in the Post-War Croatian Population (The First Croatian Health Project*)	Wrong intervention
S8	A mixed method Investigation into the perception and measurement of success in the Healthwise Exercise Referral Scheme	Wrong intervention
S9	A pragmatic randomised controlled trial of hydrotherapy and land exercises on overall well being and quality of life in rheumatoid arthritis	Wrong intervention
S10	A randomized and controlled trial of hydrotherapy in rheumatoid arthritis	Wrong intervention
S11	A randomized controlled graded exercise trial for chronic fatigue syndrome: outcomes and mechanisms of change	Wrong intervention
S12	A Randomized Controlled Trial of Aquatic and Land-Based Exercise in Patients with Knee Osteoarthritis	Wrong intervention
S13	A repeated measures experiment of green exercise to improve self-esteem in UK school children	Wrong context
S14	A repeated measures experiment of school playing environment to increase physical activity and enhance self-esteem in UK school children	Wrong context
S15	Accessibility and use of urban green spaces, and cardiovascular health: Findings from a kaunas cohort study	Wrong intervention
S16	Accounting for the daily locations visited in the study of the built environment correlates of recreational walking (the RECORD Cohort Study)	Wrong context
S17	Active commuting to school, weight status, and cardiometabolic risk in children from rural areas: The Cuenca study	Wrong intervention
S18	Acute effects of walking in forest environments on cardiovascular and metabolic parameters	Wrong context
S20	Adding natural areas to social indicators of intra-urban health inequalities among children: A case study from Berlin, Germany	Wrong intervention
S21	Aerobic exercise in water versus walking on land: effects on indices of fat reduction and weight loss of obese women	Wrong intervention
S22	An interpretative phenomenological examination of psychosocial changes among breast cancer survivors in their first season of dragon boating	Wrong context
S23	Aquatic progressions. The buoyancy of water facilitates balance and gait	Not retrieved
S24	Assessing the restorative potential of contemporary urban environment(s): beyond the nature versus urban dichotomy	Wrong context
S25	Associations between environmental value orientations and landscape preferences	Wrong intervention
S26	Associations between green space and health in english cities: An ecological, cross-sectional study	Wrong intervention
S27	Associations between neighbourhood greenness and asthma in preschool children in Kaunas, Lithuania: a case-control study	Wrong intervention
S28	Associations between residential greenness and birth outcomes across Texas	Wrong intervention
S29	Associations between urban greenspace and health-related quality of life in children	Wrong intervention
S30	Associations of location and perceived environmental attributes with walking in neighborhoods	Wrong context
S31	Associations of neighbourhood greenness with physical and mental health: Do walking, social coherence and local social interaction explain the relationships?	Wrong intervention
S32	At home with nature: Effects of 'greenness' on children's cognitive functioning	Wrong intervention
S33	Awe in nature heals: evidence from military veterans, at-risk youth, and college students	Wrong context
S34	Benefits of surfing for children with disabilities: a pilot study	Wrong context
S35	Beyond greenspace: An ecological study of population general health and indicators of natural environment type and quality	Wrong context
S36	Blood lipids of cardiac patients after acute exercise on land and in water	Wrong intervention
S37	Blue space: the importance of water for preference, affect, and restorativeness ratings of natural and built scenes	Wrong context
S38	Cardiac and pulmonary benefits of forest walking versus city walking in elderly women: A randomised, controlled, open-label trial	Wrong intervention
S39	Children living in areas with more street trees have lower prevalence of asthma	Wrong intervention
S41	Children with attention deficits concentrate better after walk in the park	Wrong intervention
S42	Circuit-based deep water running improves cardiovascular fitness, strength and abdominal obesity in older, overweight women	Wrong intervention
S43	Coastal proximity and physical activity: Is the coast an under-appreciated public health resource?	Wrong context
S44	Coastal proximity, health and well-being: results from a longitudinal panel survey	Wrong context
S45	Community environment, cognitive impairment and dementia in later life: Results from the cognitive function and ageing study	Wrong intervention

S46	Comparison of adaptive pacing therapy, cognitive behaviour therapy, graded exercise therapy, and specialist medical care for chronic fatigue syndrome (PACE): a randomised trial	Wrong intervention
S47	Connecting to the Good Life through outdoor adventure leadership experiences designed for indigenous youth	Wrong context
S48	Correlation analysis of lung cancer and urban spatial factor: Based on survey in Shanghai	Wrong context
S49	Cross-sectional associations between residential environmental exposures and cardiovascular diseases	Wrong intervention
S51	Cultural and developmental comparisons of landscape perceptions and preferences	Wrong intervention
S52	Deep water running training and road running training improve VO2 max in untrained women	Wrong intervention
S53	<i>Development of REFERQUAL; an Instrument for Evaluating Service Quality in GP Exercise Referral Schemes</i> (Doctoral dissertation, University of Central Lancashire).	Wrong intervention
S54	Differences in risk factors for coronary heart disease in patients from continental and Mediterranean regions of Croatia	Wrong intervention
S55	Differences in the community built environment influence poor perceived health among persons with spinal cord injury	Wrong intervention
S56	Do Lessons in Nature Boost Subsequent Classroom Engagement? Refueling Students in Flight	Wrong intervention
S57	Does access to neighbourhood green space promote a healthy duration of sleep? Novel findings from a cross-sectional study of 259 319 Australians	Wrong intervention
S59	Does hydrotherapy improve strength and physical function in patients with osteoarthritis—a randomised controlled trial comparing a gym based and a hydrotherapy based strengthening programme	Wrong intervention
S60	Does living by the coast improve health and wellbeing?	Wrong context
S61	Does walking explain associations between access to greenspace and lower mortality?	Wrong intervention
S62	Effect of aquatic respiratory exercise-based program in patients with fibromyalgia	Wrong intervention
S63	Effect of exposure to natural environment on health inequalities: An observational population study	Wrong intervention
S64	Effect of forest bathing on physiological and psychological responses in young Japanese male subjects	Wrong intervention
S65	Effect of forest walking on autonomic nervous system activity in middle-aged hypertensive individuals: A pilot study	Wrong intervention
S66	Effect of park prescriptions with and without group visits to parks on stress reduction in low-income parents: SHINE randomized trial	Wrong intervention
S67	Effectiveness of low-intensity aquatic exercise on COPD: a randomized clinical trial	Wrong intervention
S68	Effects of a tall ship sail training experience on adolescents' self-concept	Wrong intervention
S69	Effects of aquatic resistance training on health and fitness in post- menopausal women	Wrong context
S70	Effects of aquatic resistance training on neuromuscular performance in healthy women	Wrong intervention
S71	Effects of changing exposure to neighbourhood greenness on general and mental health: A longitudinal study	Wrong intervention
S72	Effects of forest bathing on cardiovascular and metabolic parameters in middle-aged males	Wrong context
S73	Effects of pool-based exercise in fibromyalgia symptomatology and sleep quality: a prospective randomised comparison between stretching and Ai Chi	Wrong intervention
S74	Effects of short-term forest bathing on human health in a broad-leaved evergreen forest in Zhejiang Province, China	Wrong context
S77	Effects of woodland walking on salivary stress markers cortisol and chromogranin a	Wrong intervention
S78	Energy expenditure on recreational visits to different natural environments	Wrong context
S79	Enhancing resilience in youth through a 10-day developmental voyage	Wrong context
S80	Environmental preference and restoration: (how) are they related?	Wrong context
S81	Epidemiology of hypertension in Yemen: effects of urbanization and geographical area	Wrong intervention
S82	Ethnic differences in the effect of environmental stressors on blood pressure and hypertension in The Netherlands	Wrong intervention
S85	Exploring pathways linking greenspace to health: theoretical and methodological guidance	Wrong intervention
S86	Exploring the relationship between childhood obesity and proximity to the coast: A rural/urban perspective	Wrong context
S87	Exposure to greenness and mortality in a nationwide prospective cohort study of women	Wrong intervention

S88	Favorite green, water- side and urban environments, restorative experiences and perceived health in Finland	Wrong context
S89	Feelings of restoration from recent nature visits	Wrong context
S90	Food environment, walkability, and public open spaces are associated with incident development of cardio-metabolic risk factors in a biomedical cohort	Wrong context
S91	Forest adjuvant anti-cancer therapy to enhance natural cytotoxicity in urban women with breast cancer: A preliminary prospective interventional study	Wrong context
S92	Gender differences in relationships between urban green space and health in the United Kingdom	Wrong intervention
S93	General health and residential proximity to the coast in Belgium: Results from a cross-sectional health survey	Wrong context
S94	Green and blue areas as predictors of overweight and obesity in an 8-year follow-up study	Wrong context
S95	Green and blue spaces and behavioral development in Barcelona schoolchildren: the BREATHE project	Wrong context
S96	Green areas around homes reduce atopic sensitization in children	Wrong context
S97	Green cities and health: A question of scale?	Wrong intervention
S98	Green exercise as a workplace intervention to reduce job stress	Wrong intervention
S99	Green space and mortality following ischemic stroke	Wrong intervention
S100	Green space and stress: Evidence from cortisol measures in deprived urban communities	Wrong intervention
S101	Green space, health inequality and pregnancy	Wrong intervention
S102	Green space, social inequalities and neonatal mortality in France	Wrong intervention
S103	Green space, urbanity, and health: How strong is the relation?	Wrong intervention
S104	Green spaces and adverse pregnancy outcomes	Wrong intervention
S105	Green spaces and cognitive development in primary schoolchildren. Proceedings of the National Academy of Sciences of the United States of America	Wrong context
S106	Green spaces and general health: Roles of mental health status, social support, and physical activity	Wrong intervention
S107	Green spaces and pregnancy outcomes in southern California	Wrong intervention
S108	Greener living environment healthier people? Exploring green space, physical activity and health in the doetinchem cohort study	Wrong intervention
S109	Greenness and allergies: Evidence of differential associations in two areas in germany	Wrong intervention
S110	Greenness and birth outcomes in a range of pennsylvania communities	Wrong intervention
S111	Greenness and incident childhood asthma: A 10-year follow-up in a population-based birth cohort	Wrong intervention
S112	Greenspace in urban neighbourhoods and residents' health: Adding quality to quantity	Wrong intervention
S113	Greenspace, urbanity and health: Relationships in England	Wrong intervention
S114	Happiness is greater in natural environments	Wrong context
S115	Happiness, geography and the environment	Wrong context
S116	Healing Waters: Therapeutic Landscapes in Historic and Contemporary Ireland	Wrong research design
S117	Health benefits of physical activity related to an urban Riverside regeneration	Wrong context
S118	Health effect of forest bathing trip on elderly patients with chronic obstructive pulmonary disease	Wrong context
S119	Health effects of viewing landscapes – landscape types in environmental psychology	Wrong intervention
S120	Health promoting outdoor environments -- associations between green space, and health, health-related quality of life and stress based on a danish national representative survey	Wrong intervention
S121	Heartlinks—A real world approach to effective Exercise Referral: Reducing coronary heart disease risk and improving health through a negotiated exercise programme	Wrong intervention
S122	High intensity deep water training can improve aerobic power in elderly women	Wrong intervention
S123	High intensity physical group training in water—an effective training modality for patients with COPD	Wrong intervention
S126	Impact of a riverside accessibility intervention on use, physical activity, and wellbeing: A mixed methods pre-post evaluation	Wrong context

S127	In the eye of the dragon: women's experience of breast cancer and the occupation of dragon boat racing	Wrong context
S128	Increases in global and domain specific self-esteem following a 10 day developmental voyage	Wrong context
S129	Influence of a medium-impact aquaerobic program on health-related quality of life and fitness level in healthy adult females	Wrong intervention
S130	Influence of aquariums on resident behavior and staff satisfaction in dementia units	Wrong intervention
S131	Influence of forest therapy on cardiovascular relaxation in young adults	Wrong intervention
S132	Influence of green spaces on environmental satisfaction and physiological status of urban residents	Wrong intervention
S133	Influence of immersion in water on muscle function and breathing pattern in patients with severe diaphragm weakness	Wrong intervention
S134	Is neighborhood green space associated with a lower risk of type 2 diabetes evidence from 267,072 Australians	Wrong intervention
S135	Land-based versus pool-based exercise for people awaiting joint replacement surgery of the hip or knee: results of a randomized controlled trial	Wrong intervention
S136	Landscape as playscape: The effects of natural environments on children's play and motor development	Wrong intervention
S137	Landscape mirror: the attractiveness of reflecting water	Wrong context
S138	Linking green space to health: A comparative study of two urban neighbourhoods in Ghent, Belgium	Wrong intervention
S139	Linking stroke mortality with air pollution, income, and greenness in northwest Florida: An ecological geographical study	Wrong intervention
S140	Living environment matters: Relationships between neighborhood characteristics and health of the residents in a dutch municipality	Wrong intervention
S141	Living life to the limits: dragon boaters and breast cancer	Wrong context
S142	Mapping distance-decay of cardiorespiratory disease risk related to neighborhood environments	Wrong intervention
S143	Mitigating stress and supporting health in deprived urban communities: The importance of green space and the social environment	Wrong intervention
S144	Modification of heat-related mortality in an elderly urban population by vegetation (urban green) and proximity to water (urban blue): Evidence from Lisbon, Portugal	Wrong intervention
S145	Morbidity is related to a green living environment	Wrong intervention
S146	More green space is linked to less stress in deprived communities: Evidence from salivary cortisol patterns	Wrong intervention
S147	Multiple dimensions of residential environments, neighborhood experiences, and jogging behavior in the RECORD Study	Wrong intervention
S148	Multiple health benefits of urban tree canopy: The mounting evidence for a green prescription	Duplicated from database search
S149	Natural environments–Healthy environments? An exploratory analysis of the relationship between greenspace and health	Wrong intervention
S151	Natural outdoor environments and mental and physical health: Relationships and mechanisms	Wrong research design
S152	Nature and death: An individual level analysis of the relationship between biophilic environments and premature mortality in Florida	Wrong research design
S153	Neighborhood and healthy aging in a german city: Distances to green space and senior service centers and their associations with physical constitution, disability, and health-related quality of life	Wrong research design
S154	Neighborhood greenness and chronic health conditions in medicare beneficiaries	Wrong intervention
S155	Neighborhood greenspace and health in a large urban center	Wrong intervention
S156	Neighbourhood access to open spaces and the physical activity of residents: a national study	Wrong intervention
S157	Neighbourhood blue space, health and wellbeing: the mediating role of different types of physical activity	Wrong context
S158	Neighbourhood green space and the odds of having skin cancer: Multilevel evidence of survey data from 267 072 Australians	Wrong intervention
S159	Neighbourhood green space, physical function and participation in physical activities among elderly men: The Caerphilly prospective study	Wrong intervention
S160	Nine vignettes exploring dragon boat racing for breast cancer survivors	Wrong context
S161	No association between the frequency of forest walking and blood pressure levels or the prevalence of hypertension in a cross-sectional study of a japanese population	Wrong intervention
S162	No wilderness for immigrants: Cultural differences in images of nature and landscape preferences	Wrong intervention
S163	Noticing nature: individual and social benefits of a two-week intervention	Wrong context

S164	Nurse led, home based self help treatment for patients in primary care with chronic fatigue syndrome: randomised controlled trial	Wrong intervention
S165	Objective versus subjective assessments of environmental quality of standing and running waters in a large city	Wrong context
S166	Objectively measured residential environment and self-reported health: A multilevel analysis of uk census data	Wrong intervention
S167	Opportunities to explore nature and wellbeing through kayaking for inner-city youth	Wrong context
S168	Parks and green areas are associated with decreased risk for hyperlipidemia	Wrong intervention
S170	Perceived environment attributes, residential location, and walking for particular purposes	Wrong intervention
S171	Perceived green qualities were associated with neighborhood satisfaction, physical activity, and general health: Results from a cross-sectional study in suburban and rural scania, southern Sweden	Wrong intervention
S172	Perception and evaluation of water in landscape: use of Photo- Projective Method to compare child and adult residents' perceptions of a Japanese river environment	Wrong context
S173	Perceptions of urban stream corridors within the greenway system of Sapporo, Japan	Wrong context
S174	Personal, social and environmental determinants of educational inequalities in walking: a multilevel study	Wrong intervention
S175	Physical activity as a possible mechanism behind the relationship between green space and health: A multilevel analysis	Wrong intervention
S176	Physical activity for osteoarthritis management: a randomized controlled clinical trial evaluating hydrotherapy or Tai Chi classes. Arthritis & Rheumatism	Wrong intervention
S177	Physiological and psychological effects of a walk in urban parks in fall	Wrong context
S178	Physiological and psychological effects of forest therapy on middle-aged males with high-normal blood pressure	Wrong intervention
S179	Physiological and psychological effects of viewing urban forest landscapes assessed by multiple measurements	Wrong intervention
S180	Physiological and psychological effects of walking on young males in urban parks in winter	Wrong intervention
S181	Physiological effects of forest recreation in a young conifer forest in Hinokage Town, Japan	Wrong context
S182	Physiological effects of shinrin-yoku (taking in the atmosphere of the forest) in an old-growth broadleaf forest in Yamagata Prefecture, Japan	Wrong context
S183	Physiological effects of shinrin-yoku (taking in the atmosphere of the forest)-using salivary cortisol and cerebral activity as indicators	Wrong context
S184	Physiologically relaxing effect of a hospital rooftop forest on older women requiring care	Wrong intervention
S185	Planning for health: A community-based spatial analysis of park availability and chronic disease across the lifespan	Wrong intervention
S186	Pool exercise for patients with fibromyalgia or chronic widespread pain: a randomized controlled trial and subgroup analyses	Wrong intervention
S188	Prevalence and regional disparities in abdominal obesity among children and adolescents in Shandong, China, surveyed in 2010	Wrong intervention
S189	Prevalence of obesity, abdominal obesity and associated factors in hypertensive adults aged 45–75 years	Wrong intervention
S190	Promoting physical activity in South Asian Muslim women through "exercise on prescription"	Wrong intervention
S191	Promoting resilience and wellbeing through an outdoor intervention designed for Aboriginal adolescents.	Wrong context
S192	Psychosocial aspects of scuba diving for people with physical disabilities: an occupational science perspective	Wrong context
S193	Psychosocial experiences of breast cancer survivors involved in a dragon boat program: exploring links to positive psychological growth	Wrong context
S194	Public parks and wellbeing in urban areas of the united states	Wrong research design
S195	Quality of life and physical performance in land-and water-based pulmonary rehabilitation	Wrong intervention
S196	Randomised controlled trial of graded exercise in chronic fatigue syndrome	Wrong intervention
S197	Randomised controlled trial of patient education to encourage graded exercise in chronic fatigue syndrome	Wrong intervention
S198	Rating scale measures of restorative components of environments	Wrong research design
S200	Recreational visits to marine and coastal environments in England: Where, what, who, why, and when?	Wrong context
S201	Refining of asthma prevalence spatial distribution and visualization of outdoor environment factors using gis and its application for identification of mutual associations	Wrong intervention
S202	Regional pattern of cardiovascular risk burden in Croatia	Wrong intervention
S203	Relationship between built environment, physical activity, adiposity, and health in adults aged 46–80 in Shanghai, China	Wrong intervention

S204	Relationships between exposure to urban green spaces, physical activity and self-rated health	Wrong intervention
S205	Relationships between visual landscape preferences and map-based indicators of landscape structure	Wrong intervention
S206	Residential distance and recreational visits to coastal and inland blue spaces in eighteen countries	Wrong context
S207	Residential exposure to visible blue space (but not green space) associated with lower psychological distress in a capital city	Wrong research design
S208	Residential greenness and birth outcomes: Evaluating the influence of spatially correlated built-environment factors	Wrong intervention
S209	Residential greenness and blood lipids in children: A longitudinal analysis in ginipus and lisaplus	Wrong intervention
S210	Residential greenness and risk of prostate cancer: A case-control study in Montreal, Canada	Wrong intervention
S211	Residential neighbourhood greenspace is associated with reduced risk of incident diabetes in older people: A prospective cohort study	Wrong intervention
S212	Ride every challenge: the impact of surfing on 100 young people facing personal and emotional challenges	Wrong context
S213	Risks and benefits of green spaces for children: A cross-sectional study of associations with sedentary behavior, obesity, asthma, and allergy	Wrong research design
S214	Role of physical activity in the relationship between urban green space and health	Wrong intervention
S215	Sail training as education: More than mere adventure	Wrong context
S216	Sleep insufficiency and the natural environment: Results from the us behavioral risk factor surveillance system survey	Wrong intervention
S217	Social contacts as a possible mechanism behind the relation between green space and health	Wrong context
S218	Spiritual care of cancer patients by integrated medicine in urban green space: A pilot study	Wrong intervention
S219	Spiritual therapeutic landscapes and healing: a case study of St. Anne de Beaupre, Quebec, Canada	Wrong intervention
S220	Studies on the amounts of serum hydroperoxide, mmp-3, urinary 8-ohdg, and salivary iga in rheumatoid arthritis patients who experienced shinrin-yoku (forest-air bathing and walking)	Wrong intervention
S221	Associations between neighborhood open space attributes and quality of life for older people in Britain	Wrong intervention
S224	Surrounding greenness and pregnancy outcomes in four spanish birth cohorts	Wrong intervention
S225	Surrounding greenness, proximity to city parks and pregnancy outcomes in kaunas cohort study	Wrong research design
S226	Survivor dragon boating: a vehicle to reclaim and enhance life after treatment for breast cancer	Wrong context
S227	The aesthetic value of river flows: an assess- ment of flow preferences for large and small rivers	Wrong context
S228	The association between green space and cause-specific mortality in urban new zealand: An ecological analysis of green space utility	Wrong intervention
S229	The association between neighborhood greenness and cardiovascular disease: An observational study	Wrong intervention
S230	The association between neighbourhood greenspace and type 2 diabetes in a large cross-sectional study	Wrong research design
S231	The association between objectively measured neighborhood features and walking in middle-aged adults	Wrong intervention
S232	The contribution of dragon boat racing to women's health and breast cancer survivorship	Wrong context
S233	The effect of a community garden on hga1c in diabetics of marshallese descent	Wrong intervention
S234	The effect of cognitive behavior therapy-based "forest therapy" program on blood pressure, salivary cortisol level, and quality of life in elderly hypertensive patients	Wrong intervention
S235	The effect of park and urban environments on coronary artery disease patients: A randomized trial	Wrong intervention
S236	The effect of proximity on park and beach use and physical activity among rural adolescents	Wrong context
S237	The effect of urban green on small-area (healthy) life expectancy	Wrong intervention
S238	The effects of a twenty-four-week aquatic training program on muscular strength performance in healthy elderly women	Wrong intervention
S239	The effects of aquatic and traditional exercise programs on persons with knee osteoarthritis	Wrong intervention
S240	The effects of exercise in forest and urban environments on sympathetic nervous activity of normal young adults	Wrong intervention
S241	The effects of surfing and the natural environment on the well-being of combat veterans	Wrong context
S242	The effects of the natural environment on attention and family cohesion: an experimental study	Wrong outcome

S243	The effects of water exercise on physical functioning in older people	Wrong intervention
S244	The effects of water- based exercise on glucose and insulin response in overweight women: a pilot study	Wrong context
S245	The enchanting forest and the healing sand—Nature therapy with people coping with psychiatric difficulties	Wrong intervention
S246	The impact of children's exposure to greenspace on physical activity, cognitive development, emotional wellbeing, and ability to appraise risk	Wrong intervention
S247	The impact of intervening in green space in dutch deprived neighbourhoods on physical activity and general health: Results from the quasi-experimental urban40 study	Wrong intervention
S248	The influence of ethical attitudes on the demand for environmental recreation: incorporating lexicographic preferences	Wrong intervention
S249	The influence of proximity to city parks on blood pressure in early pregnancy	Wrong research design
S250	The influence of urban green environments on stress relief measures: A field experiment	Wrong intervention
S251	The influence of urban natural and built environments on physiological and psychological measures of stress- a pilot study	Wrong intervention
S252	The meaning of the experience of sea kayaking for persons with spinal cord injury	Wrong context
S253	The ocean as a unique therapeutic environment: Developing a surfing program	Wrong context
S254	The physiological effects of shinrin-yoku (taking in the forest atmosphere or forest bathing): Evidence from field experiments in 24 forests across Japan	Wrong context
S257	The relationship between perceived health and physical activity indoors, outdoors in built environments, and outdoors in nature	Wrong research design
S258	The relationship of green space, depressive symptoms and perceived general health in urban population	Wrong intervention
S259	The restorative outcomes of forest school and conventional school in young people with good and poor behaviour	Wrong intervention
S260	The role of neighborhood characteristics in racial/ethnic disparities in type 2 diabetes: Results from the boston area community health (bach) survey	Wrong intervention
S261	The value of trees, water and open space as reflected by house prices in The Netherlands	Wrong context
S262	Therapeutic benefit of aquaerobics for individuals with rheumatoid arthritis	Not retrieved
S263	Therapeutic effect of forest bathing on human hypertension in the elderly	Wrong intervention
S264	To nature or not to nature: associations between environmental preferences, mood states and demographic factors	Wrong intervention
S265	Topophilia and the quality of life	Wrong context
S266	Tracking restoration in natural and urban field settings	Wrong research design
S267	Tracking restoration of park and urban street settings in coronary artery disease patients	Wrong intervention
S268	Type and proximity of green spaces are important for preventing cardiovascular morbidity and diabetes-a cross-sectional study for Quebec, Canada	Wrong intervention
S269	Understanding relationships between health, ethnicity, place and the role of urban green space in deprived urban communities	Wrong intervention
S270	Understanding the independent and joint associations of the home and workplace built environments on cardiorespiratory fitness and body mass index	Wrong intervention
S272	Urban green space visits and mortality among older adults	Wrong intervention
S273	Urban residential environments and senior citizens' longevity in megacity areas: The importance of walkable green spaces	Wrong context
S274	Urban tree canopy and asthma, wheeze, rhinitis, and allergic sensitization to tree pollen in a New York City birth cohort	Wrong intervention
S275	Urban trees and the risk of poor birth outcomes	Wrong intervention
S276	Use of geographic indicators of healthcare, environment and socioeconomic factors to characterize environmental health disparities	Wrong intervention
S278	Using geographical information system to model the effects of green space accessibility on mortality in Florida	Wrong intervention
S279	Validation of walking trails for the urban training tm of chronic obstructive pulmonary disease patients	Wrong research design
S282	Visiting a forest, but not a city, increases human natural killer activity and expression of anti-cancer proteins	Wrong intervention
S283	Water- versus land- based exercise effects on physical fitness in older women	Wrong intervention
S284	Water-based exercise for cardiovascular fitness in people with chronic stroke: a randomized controlled trial	Wrong intervention
S285	Water-based exercise improves health- related aspects of fitness in older women	Wrong intervention
S286	Water-based exercise in COPD with physical comorbidities: a randomised controlled trial	Wrong intervention

S287	What accounts for 'England's green and pleasant land'? A panel data analysis of mental health and land cover types in rural England	Wrong intervention
S288	Where to take a study break on the college campus: an attention restoration theory perspective	Wrong context
S289	Would you be happier living in a greener urban area? A fixed-effects analysis of panel data	Wrong context
S290	Youth characteristics and contextual variables influencing physical activity in young adolescents of parents with premature coronary heart disease	Wrong intervention
S291	Natural environments and prescribing in England	Wrong context
S292	Social prescribing for mental health—a guide to commissioning and delivery. Care Services Improvement Partnership (CSIP).	Wrong context
S293	Developing a social prescribing approach for Bristol.	Wrong intervention
S294	Investigation into the feasibility of a social prescribing service in primary care: a pilot project.	Wrong research design
S295	Exercise referral systems: a national quality assurance framework.	Not retrieved
S296	Social prescribing in very deprived areas An evaluation of social prescribing health trainers in South and West Bradford.	Wrong research design
S297	Can social prescribing provide the missing link?	Wrong research design
S298	Social prescribing in general practice: adding meaning to medicine.	Wrong research design
S299	Evidence to inform the commissioning of social prescribing.	Not retrieved
S300	The development of green care in western European countries.	Wrong intervention
S301	Does participating in physical activity in outdoor natural environments have a greater effect on physical and mental well-being than physical activity indoors?	Wrong research design
S302	The effect of aquatic therapy on postural balance and muscle strength in stroke survivors—A randomized controlled pilot trial.	Wrong context
S303	Effects of hydrotherapy in static and dynamic balance among elderly men.	Wrong context
S304	Effects of hydrotherapy in balance and prevention of falls among elderly women.	Wrong context
S305	Hydrotherapy vs. conventional land-based exercise for improving walking and balance after stroke: A randomized controlled trial.	Wrong intervention
S306	Comparing the effects of hydrotherapy and land-based therapy on balance in patients with Parkinson's disease: A randomized controlled pilot study.	Wrong intervention
S307	Effects of a water-based program on women 65 years and over: A randomised controlled trial.	Wrong intervention
S308	A randomized controlled trial to investigate the effects of water-based exercise to improve falls risk and physical function in older adults with lower-extremity osteoarthritis.	Wrong intervention
S309	A water-based training program that include perturbation exercises to improve stepping responses in older adults: Study protocol for a randomized controlled cross-over trial.	Wrong intervention
S310	An evaluation of social prescribing health trainers in Sout and West Bradford	Wrong intervention