

1 Research Article

2 **Differentiating COVID-19 and dengue from other febrile illnesses in co-epidemics:**

3 **Development and internal validation of COVIDENGUE scores**

4

5 Patrick Gérardin<sup>1</sup>, Olivier Maillard<sup>1</sup>, Léa Bruneau<sup>2</sup>, Frédéric Accot<sup>3</sup>, Florian Legrand<sup>3,5</sup>, Patrice

6 Poubeau<sup>3,4,5</sup>, Rodolphe Manaquin<sup>3,4,5</sup>, Fanny Andry<sup>3,4,5†</sup>, Antoine Bertolotti<sup>1,3,4†</sup>, Cécile

7 Levin<sup>3,4,5</sup>

8

9 <sup>1</sup> Centre for Clinical Investigation - Clinical Epidemiology (CIC 1410), Institut National de la Santé et de  
10 la Recherche Médicale (INSERM), Centre Hospitalier Universitaire de la Réunion, Saint Pierre,  
11 Reunion, France

12 <sup>2</sup> Department of Public health and Research Support, Centre Hospitalier Universitaire de la Réunion,  
13 Saint Denis, Reunion, France

14 <sup>3</sup> COVID-19 testing centre, Centre Hospitalier Universitaire de la Réunion, Saint Pierre, Reunion,  
15 France

16 <sup>4</sup> Department of Infectious Diseases and Tropical Medicine, Centre Hospitalier Universitaire de la  
17 Réunion, Saint Pierre, Reunion, France

18 <sup>5</sup> City to Hospital Outpatient Clinic for the care of COVID-19, Centre Hospitalier Universitaire de la  
19 Réunion, Saint Pierre, Reunion, France

20

21 **Corresponding Author:** P. Gérardin, Center for Clinical Investigation (CIC1410), CHU  
22 Réunion, BP 350, 97448 Saint-Pierre Cedex – Reunion, ([patrick.gerardin@chu-reunion.fr](mailto:patrick.gerardin@chu-reunion.fr))

23 <sup>†</sup> Contributed equally.

24 Short running head title: **Scores to distinguish COVID-19 from dengue and other febrile**  
25 **illnesses in co-epidemics**

26 **Abstract**

27

28 **Background.** In a retrospective cohort study, we previously distinguished the factors associated with  
29 coronavirus 2019 (COVID-19) or dengue from those associated with other febrile illnesses (OFIs). In  
30 this study, we developed a scoring system to discriminate both infectious diseases.

31

32 **Methods.** Predictors of both infections were sought using multinomial logistic regression models  
33 (OFIs as controls) in all subjects suspected of COVID-19 who attended the SARS-CoV-2 testing center  
34 of Saint-Pierre teaching hospital, Reunion Island, between March 23 and May 10, 2020. Two  
35 COVIDENGUE scores were developed and internally validated by bootstrapping for predicting each  
36 infection after weighting the odd ratios according to a predefined rule. The discriminative ability of  
37 each score was assessed using the area under the receiver operating characteristic curve (AUC). Their  
38 calibration was assessed using goodness-of-fit statistics.

39

40 **Results.** Over 49 days, 80 COVID-19, 60 non-severe dengue and 872 OFI cases were diagnosed. The  
41 translation of the best fit model yielded two COVIDENGUE scores composed of 11 criteria: contact  
42 with a COVID-19 positive case (+3 points for COVID-19; 0 point for dengue), return from travel  
43 abroad within 15 days (+3/-1), previous individual episode of dengue (+1/+3), active smoking (-3/0),  
44 body ache (0/+5), cough (0/-2), upper respiratory tract infection symptoms (-1/-1), anosmia (+7/-1),  
45 headache (0/+5), retro-orbital pain (-1/+5), and delayed presentation (>3 days) to hospital (+1/0).  
46 The AUC was of 0.79 (95%CI 0.76-0.82) for COVID-19 score and of 0.88 (95%CI 0.85-0.90) for dengue  
47 score. Calibration was satisfactory for COVID-19 score and excellent for dengue score. For predicting  
48 COVID-19, sensitivity was of 97% at the 0-point cut-off and specificity approximated 99% at the 10-  
49 point cut-off. For predicting dengue, sensitivity approximated 97% at the 3-point cut-off and  
50 specificity 98% at the 11-point cut-off.

51 **Conclusions.** In conclusion, the COVIDENGUE scores proved discriminant to differentiate COVID-19  
52 and dengue from other febrile illnesses in the context of SARS-CoV-2 testing center during a co-  
53 epidemic. Further studies are needed to validate or refine these scores in other settings.

54

55

## 56 **Author Summary**

57 In the last two years, several countries not only have faced the impact of the coronavirus 2019  
58 (COVID-19) but also dengue epidemics simultaneously, evoking an overburden to healthcare  
59 systems. On Reunion Island, southwestern Indian ocean, dengue virus is circulating since 2004 under  
60 an endemo-epidemic pattern with outbreaks peaking between March and May and has prominently  
61 intensified annually since 2015. Regarding COVID-19, Severe Acute Respiratory Syndrome  
62 Coronavirus-2 (SARS-CoV-2) emerged in March 2020 and was brought from the Bahamas to the  
63 island. COVID-19 and dengue have been deemed clinically similar, especially within the first two days  
64 from symptom onset. In the framework of a cohort study conducted at a SARS-CoV-2 testing center  
65 between March 23 and May 10, 2020, we developed two scores aimed at predicting both infections.  
66 The discriminative ability (the ability to diagnose each infection) was satisfactory to good for COVID-  
67 19 (area under receiver operating characteristic curve [AUC] 0.79, 95% confidence interval [CI] 0.76-  
68 0.82) and good for dengue (AUC 0.88, 95%CI 0.85-0.90). The calibration (the adequacy between  
69 predicted and observed infections) was satisfactory for both scores. Each score was user-friendly and  
70 provided an easy guidance for predictive analysis, whether in strategies maximizing the prediction or  
71 the exclusion of each infection.

72

73 **Keywords:** coronavirus; COVID-19; severe acute respiratory syndrome; SARS-CoV-2; dengue;  
74 arbovirus; flavivirus; epidemics; pandemics; cohort study; risk factors; multivariate analysis; logistic  
75 regression; multinomial logistic regression; prediction model; score

76

## 77 **Background**

78 Prompt identification and management of overlapping COVID-19 and dengue infections may prevent  
79 cases of both viral diseases from deteriorating [1]. Moreover, it can avoid events of hospitalization in  
80 the Intensive Care Unit (ICU) and nosocomial transmission of both infections which may be useful  
81 whenever syndemics stress healthcare systems [2]. For public health, more rapid quarantine, contact  
82 tracing and vector control measures may help to mitigate the dynamics of both epidemics [2,3].

83 Since Severe Acute Respiratory Syndrome Coronavirus-2 (SARS-CoV-2) spread globally, several  
84 countries have been facing dengue epidemics with the fear of increased mortality in the most  
85 vulnerable populations [4]. Moreover, the absence of both highly sensitive and specific rapid  
86 diagnostics tests may have hampered discrimination between the two separate diagnoses possibly  
87 leading to misdiagnoses and the implementation of inadequate countermeasures in emergency  
88 situations [4]. On Reunion Island, a French overseas territory located in the southwestern Indian  
89 ocean region known to have host one of the largest chikungunya outbreaks [5], dengue virus (DENV)  
90 is endemic with annual epidemics occurring since 2015 [6]. Moreover COVID-19, which emerged in  
91 March 2020, has established an autochthonous transmission since August 2020 [7].

92 Surprisingly, most prediction models in the field of COVID-19 research have been dedicated to  
93 prognosis and not to the identification of people diseased from infection nor at risk of being infected  
94 [8]. Given that differential diagnosis between COVID-19 and dengue was difficult, we set-up a cohort  
95 study and developed a multinomial logistic regression model (MLR) aimed at distinguishing SARS-  
96 CoV-2 or DENV infections from other febrile illnesses (OFIs) during the first COVID-19 introductive  
97 pandemic wave [9].

98 Herein, we furthered our previous reflection to improve the predictive capability of our model  
99 in testing the hypothesis that the more variables included in the model, the better the discrimination  
100 between the diseases [10].

101 The objective of this study was to develop and internally validate a scoring system able to  
102 predict both infectious diseases which to date had never been performed.

## 103 **Methods**

### 104 ***Study design, study setting and population***

105 A retrospective cohort study was conducted using prospectively collected data between 23 March  
106 and 10 May 2020, on all participants screened for COVID-19 within the UDACS (*Unité de Dépistage*  
107 *Ambulatoire du COVID-19 Sud*) of Saint-Pierre which is one of the two SARS-CoV-2 testing centers of  
108 the *Centre Hospitalier Universitaire Réunion* (CHU Reunion) providing care for the general population  
109 at the time. People without symptoms or with co-infections were excluded from the study.

110 Consecutively arriving outpatients to the SARS-CoV-2 testing center were informed of the  
111 study both verbally and by means of an informational document. Adults, as well as children under  
112 the age of 18 years (having the additional verbal consent of their parent or legal guardian) who  
113 expressed no opposition were asked to answer a questionnaire and were personally interviewed by a  
114 nurse in accordance with the French legislation on bioethics for retrospective research.

115 Patients' medical records were retrospectively reviewed and anonymized data were collected  
116 in standardized forms according to the MR-004 procedure of the *Commission Nationale de*  
117 *l'Informatique et des Libertés* (the French Information Protection Commission). The ethical character  
118 of this study on previously collected data was approved by the Scientific Committee for COVID-19  
119 research of CHU Reunion and anonymized data were registered on the Health Data Hub (N°  
120 F20201021104344/October, 2020).

121

### 122 ***Data collection and gold standard procedure***

123 The questionnaire included information on: i) demographics (gender and age), ii) occupation, iii) risk  
124 factors (smoking, obesity, return from travel abroad during the 15 previous days), iv) comorbidities  
125 (diabetes, hypertension, cardiovascular disease, chronic obstructive pulmonary disease, cancer,  
126 previous episode of dengue and "other comorbidities"), v) intra-household and individual exposure  
127 to SARS-CoV-2, vi) individual symptoms (fever, cough, dyspnea/shortness of breath, body aches,  
128 diarrhea, gut symptoms, ageusia, metallic taste, anosmia, fatigue, headache, retro-orbital pain and

129 upper respiratory tract infection symptoms) and vii) treatment (antihypertensive drugs and/or  
130 hydroxychloroquine). Patients' temperature, pulse rate, respiratory rate, and oxygen saturation  
131 (SpO<sub>2</sub>) were also measured during the consultation, as well as the presence of cough and/or anxiety.  
132 People reporting symptoms were examined by a medical resident or a senior infectious disease  
133 specialist in accordance with routine care procedures.

134 All participants were screened for COVID-19 by a nurse using a nasopharyngeal swab for 20  
135 seconds in one nostril [11]. Each sample was administered for a SARS-CoV-2 reverse transcription-  
136 polymerase chain reaction (RT-PCR) using the Allplex 2019-nCov<sup>TM</sup> assay (Seegene, Seoul, Republic of  
137 Korea) or an in-house kit (CNR Pasteur) targeting N, RdRP and E genes, or N and IP2/IP4 targets of  
138 RdRP depending on which assay was used. Moreover, each participant of the study that was  
139 suspected of having dengue was tested for NS1 antigen using an OnSite<sup>TM</sup> Duo dengue Ag-IgG-IgM  
140 rapid diagnostic test (CTK Biotech, San Diego, CA, USA). If these patients had a negative result, they  
141 were explored further with a DENV RT-PCR or a dengue serology panel according to the timing of  
142 symptoms.

143

#### 144 ***Statistical analysis***

145 Proportions between COVID-19, dengue, and non-COVID-19 non-dengue OFI patients were  
146 compared using Chi square or Fisher exact tests, where deemed appropriate. Bivariable and  
147 multivariable multinomial logistic regression (MLR) models were fitted within Stata14<sup>®</sup> (Statacorp,  
148 College Station, Texas, USA) to identify independent predictors of COVID-19 and dengue using OFIs  
149 as controls.

150 The first step of the process included fitting a full MLR model with all significant covariates  
151 identified by bivariable analysis [9]. From the candidate predictors, we used a backward stepwise  
152 selection procedure to drop out non-significant variables (output if  $P > 0.05$ ). At this second step, we  
153 built a parsimonious MLR model with all significant predictors. In this model, an adaption of the  
154 Hosmer-Lemeshow goodness-of-fit chi<sup>2</sup> test was used for MLR models with polytomous categorical

155 outcomes [12] (hereafter named MHL test for multinomial Hosmer-Lemeshow) to minimize the  
156 discrepancy between predicted and observed events. In these analyses, crude, and adjusted odds  
157 ratios (OR) and 95% confidence intervals (95% CI) were assessed using the binomial and Cornfield  
158 methods respectively.

159 Based on the assumption that if there are more variables, there will be better discrimination  
160 [10], we added variables that were ruled out at the borderline of significance during the backward  
161 stepwise elimination process to our previous 9-covariate parsimonious model [9].

162 The strategy of this third step is detailed in the [text file S1](#).

163 Weighted analyses on the overall inverse probability of hospitalization to assess the potential  
164 for selection bias and to test the robustness of the identified predictors were performed next.

165 Lastly, from the best fit MLR compromise model, we derived two simple scores, the  
166 COVIDENGUE scores (one for COVID-19 and, one for dengue) after weighting the OR according to a  
167 predefined rule ([S1 Table](#)). This rule gave a weight to all the model covariates (no matter their  
168 significance) to maximize the possible combinations and to provide the largest range of values which,  
169 theoretically, enables the best discrimination.

170 The discriminative ability of the models and of the COVIDENGUE scores (*i.e.*, the model and  
171 score performances) for the diagnosis of COVID-19 and dengue were tested using receiver operating  
172 characteristic (ROC) plot analyses which considers ROC plots and areas under ROC curves (AUC) with  
173 their 95% CIs [13]. Discrimination is usually considered as null when the AUC is 0.5, poor when  
174 between 0.5 and 0.7, satisfactory between 0.7 and 0.8, good between 0.8 and 0.9, excellent between  
175 0.9 and 1, and perfect when the AUC equals 1. In addition, we provided classification plots to assess  
176 the discriminative ability of COVIDENGUE scores conditional to absolute risk thresholds [14]. Finally,  
177 scores performances were internally validated by using bootstrapping (2000 replicates).

178 The calibration of the COVIDENGUE scores (*i.e.*, the adequacy between predicted and  
179 observed events) was evaluated using state-of-art calibration plots [15] and Hosmer-Lemeshow tests

180 for MLR and binomial logistic regression models [12,16], as well as with event-based or risk-based  
181 calibration plots which were displayed over the range of MHL deciles of predicted risks.

182 The diagnostic performance of each COVIDENGUE score cut-off was displayed in terms of  
183 sensitivity, specificity, positive likelihood ratio (LR+), negative likelihood ratio (LR-), positive  
184 predictive value (PPV), negative predictive value (NPV) and diagnostic accuracy.

185 For all these analyses, observations with missing data were ruled out, tests were two-tailed,  
186 and a *P*-value less than 0.05 was considered as statistically significant.

187 The full details of the methods can be found in the [text file S1](#). The results were reported  
188 following both the STROBE and TRIPOD reporting guidelines for observational studies and prediction  
189 models ([text file S2](#)), respectively [17,18].



## 190 **Results**

### 191 ***Characteristics of the study population***

192 Between 23 March and 10 May 2020, 1,715 subjects were admitted to the UDACS for screening for  
193 or diagnosis of COVID-19. Over this 6-week period, the lab did not diagnose any cocirculation of  
194 influenza or non-influenza respiratory viruses.

195 As part of an expanded screening week dedicated to all admissions to our hospital, 370  
196 subjects who were screened opportunistically and 332 fully asymptomatic subjects were ruled out  
197 leaving 1,013 outpatients eligible for this analysis. The study population is shown in [Figure 1](#).

198 The characteristics of the 1,013 of patients who consulted the COVID-19 screening center during the  
199 COVID-19 dengue co-epidemics are presented in [S2 Table](#).

200 COVID-19 was diagnosed in 80 patients (7.9%) and dengue in 61 patients (6.0%) while 872  
201 patients tested negative and were clinically considered as non-COVID-19, non-dengue subjects.  
202 Interestingly, COVID-19 patients presented themselves later in the course of the illness compared to  
203 patients with dengue or OFIs (time elapsed since symptom onset, 7.5 days versus 4.2 days or 6.3  
204 days,  $P<0.001$ ). Dengue was more likely to be symptomatic than COVID-19 as exemplified by higher  
205 frequencies of fever, body ache, gut symptoms, fatigue, headache, and retro-orbital pain, as well as a  
206 higher need for physical examination. However, COVID-19 exhibited longer durations of fatigue and  
207 rhinorrhea.

208

### 209 **Bivariate and multivariate analyses**

210 The crude relationships between the sociodemographic, epidemiological, and clinical characteristics  
211 in cases of COVID-19, dengue and OFIs are presented in [S3 Table](#).

212 Bivariable analysis identified anosmia, the return from travel abroad during the previous 15  
213 days, contact with a COVID-19 positive case and delayed presentation (beyond three days since  
214 symptom onset) as candidate predictors for COVID-19, whereas healthcare workers and active  
215 smokers as those protected against COVID-19. Headache, retro-orbital pain, body ache, fatigue, gut

216 symptoms, and previous individual episode of dengue were potential predictors for dengue, while  
217 the recent return from travel abroad and cough were potential protective factors against dengue.  
218 Interestingly, Upper Respiratory Tract Infection (URTI) symptoms provided protection against both  
219 infections (which means they were associated with OFIs), while the role of fever and ageusia was less  
220 clear, these being associated with both diagnoses of interest ([S3 Table](#)).

221 The variables that were significant in the bivariable analysis were entered into a full  
222 multivariable MLR model ([S4 Table](#)). This generated 4% of missing observations (n=46). It supported  
223 the role of anosmia, contact with a COVID-19 positive case and recent return from travel abroad as  
224 independent predictors of COVID-19 as well as an association of active smokers to protection against  
225 COVID-19. In turn, previous individual episodes of dengue, body ache, headache and retro-orbital  
226 pain were independent predictors of dengue, while cough was less likely to be observed with this  
227 infection. As for the bivariable analysis, URTI symptoms were indicative of OFIs. Alternatively, fever  
228 proved non discriminant even though it was far more common with dengue which motivated its  
229 exclusion from further analyses. As in our previous analysis [9], these findings were contrasted by the  
230 weighting on the inverse probability of hospitalization rates ([S5 Table](#)).

231 After multicollinearity analysis, control of overfitting and unnecessary adjustments, the best fit  
232 MLR compromise model (based on AIC and BIC metrics) included eleven covariates ([Table 1](#)). This  
233 confirmed the role of anosmia, contact with a COVID-19 positive case and/or recent return from  
234 travel abroad as independent predictors of COVID-19, as well as the role of body ache, headache,  
235 previous individual episode of dengue and retro-orbital pain as predictors of dengue. Conversely, in  
236 this model, active smoking, cough, and URTI symptoms were considered as protective factors against  
237 COVID-19, dengue, or both.

238 Goodness-of-fit and discrimination indicators of the MLR models are displayed in [S6 Table](#). We  
239 made the assumption that the best fit compromise model could be achieved with the eleven  
240 abovementioned covariates. The AUCs of the model were of 0.80 (95%CI 0.74-0.86) for COVID-19  
241 and 0.89 (95%CI 0.84-0.92) for dengue in the primary analysis ([Figure 2, panel a](#)), and of 0.80 (95%CI

242 0.73-0.86) and 0.88 (95%CI 0.84-0.92) after bootstrapping, respectively. Further adjustment on both  
243 age and/or gender did not improve the AUC of the model to a point sufficient enough to change  
244 interpretation when considering AUC boundaries ([S6 Table](#)).

245

#### 246 ***Score development and internal validation***

247 Based on this final model, we derived two COVIDENGUE scores. For a better appropriation, we  
248 decided to set the weight of each dengue clinical criterion at 5 points. With this exception, the  
249 weighting scale was as described in [S1 Table](#).

250 The translation of the final MLR model into two COVIDENGUE scores was satisfactory. This step  
251 showed barely a 1-point loss in the discriminative ability for both COVID-19 and dengue and a  
252 superimposition of model and score ROC plots ([Figure 2, panel b and panel c](#)).

253 The median value of the COVID-19 score was 1 ( $Q_1$ - $Q_3$ : 0 to 3, range: -4 to 14) and the median  
254 value of the dengue score was 3 ( $Q_1$ - $Q_3$ : -1 to 7, range: -4 to 18). In the primary analysis, the  
255 discriminative ability of the scores was satisfactory to good for COVID-19 (AUC 0.79, 95%CI 0.76-0.82)  
256 and good for dengue (AUC 0.88, 95%CI 0.85-0.90) ([Figure 2, panel d](#)). Interestingly, the dengue score  
257 exhibited higher true positive rates than the COVID-19 score (which means false negative cost was  
258 minimized versus the false positive cost) in risk thresholds higher than 0.4. COVID-19 had higher  
259 false positive rates in risk thresholds under 0.5 than the dengue scores (which means FP cost was  
260 minimized versus FN) ([S1 Fig.](#)).

261 After bootstrapping, when considering confidence intervals, the discriminative ability was  
262 between poor and good for COVID-19 (AUC 0.75, 95%CI 0.68-0.82) and good for dengue (AUC 0.86,  
263 95%CI 0.81-0.90), which represented an AUC loss of five points and three points from the final MLR  
264 model, respectively.

265 Overall, the calibration of the COVIDENGUE scores as shown by calibration plots ([S1 Fig.](#)) and  
266 MHL tests ([S7 Table](#) and [S8 Table](#)) was deemed satisfactory albeit prone to underfitting for COVID-19  
267 (slope: 1.22, intercept 0.08;  $\chi^2$  (6) 1.75,  $P=0.9416$ ), whereas it was excellent and consensual for

268 dengue (slope: 0.97, intercept 0.12; chi2 (8) 6.78,  $P=0.5605$ ). Strikingly, despite few discrepancies  
269 between predicted and observed events (S2 Fig. and S3 Fig., panel a and panel c), and a trend  
270 towards underprediction of COVID-19 events (S4 Fig., panel a), the MHL test of both COVIDENGUE  
271 scores was well balanced across the deciles of predicted risks (S7 Table and S8 Table) and their  
272 calibration displayed other metrics better than those of the reference model (S9 Table).

273 For overall COVID-19 prediction, a threshold of 0 points displayed a sensitivity of 97.3% (95%CI  
274 96.2%-98.3%) and a NPV of 99.0% (95%CI 98.4%-99.6%), while a threshold of 10 points displayed a  
275 specificity of 98.8% (95%CI 98.1%-99.5%) and a PPV of 65.1% (95%CI 62.1%-68.1%). A 3-point cut-off  
276 maximized both sensitivity and specificity (78.1% and 63.7%, respectively). Regardless of COVID-19  
277 prevalence, the COVID-19 score was effective in excluding COVID-19 ( $LR^- < 0.10$ ) for negative score  
278 values under -1, whereas it was effective for diagnosing COVID-19 ( $LR^+ > 10$ ) with score values higher  
279 than 7. The detailed performances of the COVID-19 score are presented in S10 Table, its intrinsic and  
280 extrinsic properties in Figure 3 (Panel a to panel d). For COVID-19 individual risk prediction, the  
281 estimated probability of being infected derived from the COVID-19 score was  $\text{Prob}_{(Y=1/X)} = 1 / (1 + \exp^{$   
282  $(-3.698086 + 0.3533028 \times \text{score value})}$ ).

283 For dengue overall prediction, a threshold of 3 points displayed a sensitivity of 96.7% (95%CI  
284 95.5%-97.8%) and a NPV of 99.7% (95%CI 99.4%-100%) while a threshold of 11 points displayed a  
285 specificity of 97.7% (95%CI 96.7%-98.6%) and PPV of 40.3% (95%CI 37.2%-43.3%). A 6-point cut-off  
286 maximized both sensitivity and specificity (83.3% and 71.7%, respectively). Regardless of dengue  
287 prevalence, the dengue score was effective in excluding dengue ( $LR^- < 0.10$ ) for score values under 4,  
288 whereas it was effective for diagnosing dengue ( $LR^+ > 10$ ) with score values higher than 10. The  
289 detailed performances of the dengue score are presented in S11 Table, its intrinsic and extrinsic  
290 properties in Figure 3 (Panel a to panel d). For dengue individual risk prediction, the estimated  
291 probability of being infected derived from the dengue score was  $\text{Prob}_{(Y=1/X)} = 1 / (1 + \exp^{$   
292  $(-5.508826 + 0.4406125 \times \text{score value})}$ ).

## 293 **Discussion**

294 In this study, COVIDENGUE scores were developed and internally validated. An eleven covariate-  
295 based prediction model aimed at distinguishing COVID-19 from dengue and other febrile illnesses at  
296 their clinical onset was made in the context of cocirculation of SARS-CoV-2 and DENV. Overall, the  
297 predictive performance of the score, meaning the ability to diagnose or to rule out infection, was  
298 good for dengue and satisfactory for COVID-19, while calibration performance meaning the ability to  
299 minimize the discrepancy between expected and observed events, was at least satisfactory on  
300 multiple metrics of goodness-of-fit statistics. The dengue score for which symptoms were good  
301 predictors, displayed both better sensitivity and a higher negative predictive value while the COVID-  
302 19 score for which risk factors were paramount, proved more specific and had a higher positive  
303 predictive value across the whole range of cut-offs.

304

### 305 **Strengths and limitations**

306 A scoring system should have both construct and content validity. It must be able to be reproduced  
307 over time and across geographic and methodological boundaries. It must also be accurate  
308 (calibration and discrimination) and clinically meaningful [19]. Before this study, we previously  
309 assumed that COVID-19 and dengue diagnoses could be affected by a misclassification bias which  
310 could stem from the poor sensitivity of both SARS-CoV-2 molecular and DENV NS1 antigen tests  
311 rather than from their false positives [9]. This putative bias was believed to be minimal given that,  
312 firstly, on Reunion Island, like anywhere else during the rise of the COVID-19 pandemic [20], there  
313 was little cocirculation of other respiratory viruses that could have competed with SARS-CoV-2 and  
314 caused false negatives, [21] and secondly, for COVID-19, negative samples were retested by RT-PCR  
315 upon onset of new symptoms, meaning that rapid antibody or antigenic tests were ruled out, while  
316 for dengue, the workup was completed by a RT-PCR or a serology test to downsize false negative and  
317 false positive proportions [22-24]. This caution decision rule likely pledges the diagnostic accuracy of  
318 our gold standards.

319           Interestingly, the calibration of both scores was satisfactory to excellent and displayed  
320           measures close to the theoretical model from which they were derived based on a set of various  
321           goodness-of-fit metrics. Notwithstanding a relatively small study population, the diagnostic accuracy  
322           of gold standards, along with the acceptable calibration properties ensure the validity of construct of  
323           the COVIDENGUE scores and the reliability of their predictions at the individual level for the dengue  
324           score, while, together with their discriminative ability, also lend support to their clinical utility [25].

325           The COVIDENGUE scores were developed using MLR [9] which is the gold standard method for  
326           assessing non-ordered polytomous categorical outcomes [26,27]. Except for active smoking whose  
327           protective effect against SARS-CoV-2 infection remains a matter of debate among researchers  
328           [28,29], all predictors retained to build the scores had been previously identified as relevant  
329           indicators of COVID-19 or dengue or associated with OFIs (especially respiratory infections) [29-40]  
330           This ensures both the validity of content of this scoring system and the possibility of contrasted  
331           predictions. For example, international travel had been identified as a source of COVID-19 during the  
332           first pandemic wave [34,35]. In a recent Colombian study [38], dengue proved more symptomatic  
333           than COVID-19 and dengue patients came to the hospital in greater numbers than COVID-19  
334           patients. In Brazil's Amazonian basin, prior to a dengue infection, as diagnosed by positive IgG  
335           antibodies was associated with twice the risk of clinically apparent COVID-19 [36]. The external  
336           validity of the other predictors has been discussed thoroughly in our previous study [9]. Interestingly,  
337           similar to our first analysis, weighting on the inverse odds of hospitalization abrogated the  
338           significance of a few predictors (Table 1 versus S5 Table), which suggests a contrast in our findings at  
339           the population level and motivates further validation studies in the primary care setting.

340           Notably, this hospital-based study was conducted in a SARS-CoV-2 screening center which may  
341           have underestimated the real incidence of dengue and introduced another information bias in that  
342           dengue patients could have been potentially directed towards other units or even underreported  
343           given the lack of epidemiological predictors reported for dengue [9]. This potential limitation of the  
344           validity of content should be investigated in future studies by adding more risk factors for dengue to

345 refine our models. Lastly, our scoring system was composed of only clinical and epidemiological  
346 criteria. It was user-friendly for diagnosis purposes which should facilitate its utilization across  
347 different settings while also helping its external validation.

348

### 349 **Interpretation**

350 For epidemiological and clinical practices, the overall performance of a prediction model relies first  
351 on its discrimination [13]. In this perspective, ROC plots do not offer more information than the AUC  
352 to indicate the discriminative ability [13,14]. In this study, we demonstrated that the discriminative  
353 ability of the models could be improved only at the unreasonable cost of complexity (20-item model),  
354 or when adding age to the COVID-19 model; a factor whose effect might change according to the  
355 context (S6 Table). This study also showed that the translation of the model into two scores was not  
356 accompanied by a significant loss in discriminative ability (Figure 2) which suggests an adequate  
357 weighting of the scores.

358       Importantly, we provided classification plots which may offer more information for decision-  
359 making conditional to risk thresholds [13,14]. Overall, classification plots may reveal a better ability  
360 of the COVID-19 score to predict non-events (OFIs) and a better ability of dengue score to predict  
361 events (dengue). Moreover, at lower risk thresholds the COVID-19 score exhibited a lower cost of FP  
362 than the dengue score. For example, when the event risk was 0.2, the COVID-19 score yielded a 0.5:1  
363 FN to FP ratio while it was 1:1 for the dengue score (Figure S1). These results aligned with a trend  
364 towards a better specificity for the COVID-19 score than for the dengue score across the range of cut-  
365 off values (Figure 3). Conversely, at higher risk thresholds (>0.5), when it came to predict an event,  
366 the dengue score displayed a better sensitivity (in other words, higher TP rate, or a lower cost of FN  
367 *versus* FP cost). Taken together with respect to the SARS-CoV-2 strategy of testing, isolating, and  
368 tracing, our findings encourage evaluating the addition of clinical or biological discriminative  
369 variables [38,39] in the COVID-19 score to improve its sensitivity across the risk thresholds while in  
370 regard to the dengue strategy of testing, isolating, and targeted vector control, they encourage the

371 fitting with more specific epidemiological variables highly predictive of an infective bite by an *Aedes*  
372 mosquito.

373 At an individual risk level, predictions should be guided using first of all calibration  
374 performances (calibration plots and goodness-of-fit metrics) [24]. Our findings showed that the  
375 calibration of the models (Table S6 to S8) and their derived scores (Table S9) were excellent and  
376 consensual for dengue which enables individual risk prediction and satisfactory for COVID-19 which  
377 suggests caution for individual risk prediction.

378

### 379 **Generalizability**

380 The COVIDENGUE scores were developed from data acquired within a hospital-based SARS-CoV-2  
381 testing center on Reunion Island which is a tropical setting where dengue co-circulated early on  
382 during the first pandemic wave at a time when there was no possibility to screen for COVID-19  
383 outside the hospital. The circulation of the SARS-CoV-2 variant was furthermore unknown and the  
384 population of infected people were mainly composed of relatively healthy travelers [9,35]. Thus,  
385 although our center served an ambulatory healthcare driven population, the scores will have to be  
386 validated in primary care settings before being broadly used in the community. They will also have to  
387 be validated in the highly comorbid autochthonous population of the island [9,35].

388 In future research, the scores should be studied in the context of newly circulating SARS-CoV-2  
389 variants as well as in the context of populations immunized against dengue or COVID-19. On Reunion  
390 Island, the first wave of SARS-CoV-2 circulation ended in June 2020 as a result of the influence of the  
391 first national lockdown. The second wave began in August 2020 during the winter season of the  
392 region and was concomitant to the spread of the D614G mutation in Europe [7]. Since this period,  
393 SARS-CoV-2 transmission has been mainly autochthonous and successively maintained through the  
394 circulation of both South African (B.1.351/501Y.V2) and the Indian (B.1.617/21APR-02) variants of  
395 concerns (VOCs). While the clinical presentation of dengue appears to be different between DENV-2  
396 and DENV-1 serotype infections (DENV-1 has been predominant on the island since 2020) on top of



397 the proportions of secondary infections [41], it is not yet clear whether the prevalence of COVID-19  
398 has changed throughout the circulating VOCs despite a trend towards increased severity reported  
399 with the UK (B.1.1.7/501Y.V1) [42], along with the Brazilian (P.1/501Y.V3) [43], South African [44], or  
400 Indian variants [45]. The same could be said to the potential for more clinically apparent  
401 manifestations of COVID-19 when DENV infection precedes SARS-CoV-2 infection [36] as well as the  
402 potential for higher severity with SARS-CoV-2 DENV co-infections [2]. Both have to be fully  
403 investigated in the future with the diagnostic value of the COVIDENGUE scores evaluated.

404

#### 405 **Implications**

406 For individual risk prediction and clinical practice, the equations of estimated probability of being  
407 diagnosed as infected derived from the scores could be used to define individual risks conditional to  
408 adequate calibration. Herein, we have shown that the COVIDENGUE scores could be useful to  
409 diagnose dengue patients in a tropical SARS-CoV-2 screening center, however they deserved further  
410 improvements for diagnosing COVID-19.

411 For public health purposes, the score values could be incorporated into testing strategies and  
412 guided with mitigation interventions whenever routine biological testing is ineffective. For clinical  
413 research, the cut-off values could serve to risk stratification in new diagnostic studies and the  
414 COVIDENGUE scores items incorporated into propensity scores. For benchmarking of prediction  
415 models, the predicted risk probabilities of a new model could also be summed up and compared to  
416 the total number of infected individuals (to define risk thresholds) under the assumption that such an  
417 observed-to-predicted risk ratio together with the slope of the calibration plots and the Hosmer-  
418 Lemeshow chi2 test probability, would be close to one, to underlie the adequate calibration of the  
419 new model.

420 When it comes to testing the external validity of the COVIDENGUE scores in a different  
421 epidemiological context, or to improving their predictive performances by adding or removing  
422 variables within a new model, investigators will have to consider using calibration plots and

423 goodness-of-fit statistics to see whether the model is properly calibrated and could apply to  
424 individual risk prediction. Such novel investigations should delve deeper into demonstrating the  
425 clinical use while providing new indicators such as the IDI (Integrated Discrimination Improvement)  
426 and/or the net benefit from classification plots or decision curve analyses [13,14].

427

#### 428 **Conclusions**

429 In conclusion, the COVIDENGUE scores proved discriminant to differentiate COVID-19 and dengue  
430 from OFIs in the context of SARS-CoV-2 testing center during a co-epidemic. Further studies are  
431 needed to validate or refine these scores in other settings.

432

#### 433 **Acknowledgments**

434 The authors are indebted to the staffs of the Department of Infectious Diseases and Tropical  
435 Medicine, especially Dr Yatrika Koumar, and the SARS-CoV-2 testing center with special appreciation  
436 given to Dr Antoine Joubert and the nurses who performed the questionnaires. The authors would  
437 also like to thank the biologists at CHU de La Réunion for their timely diagnosis, the participants for  
438 their interest in research and AcaciaTools for their reviewing and medical writing services.

## 439 **Supporting information**

440 Supplementary material is available online. While the supplementary tables have been copyedited,  
441 the methodological appendix and the Venn diagram have not been copyedited and are the sole  
442 responsibility of the authors. Questions and comments about these should be addressed to the  
443 corresponding author. STROBE and TRIPOD checklists ([text file S2](#)).

444

## 445 **Notes**

### 446 ***Author's contributions.***

447 Conceptualization: Fanny Andry, Patrick Gérardin, Cécile Levin. Data curation: Patrick Gérardin.  
448 Formal analysis: Patrick Gérardin, Antoine Bertolotti, Olivier Maillard, Léa Bruneau, Cécile Levin.  
449 Investigation: Frédéric Accot, Florian Legrand, Patrice Poubeau, Rodolphe Manaquin, Fanny Andry,  
450 Antoine Bertolotti, Cécile Levin. Methodology: Patrick Gérardin. Project administration: Fanny Andry.  
451 Resources: Cécile Levin. Software: Patrick Gérardin. Supervision: Olivier Maillard, Antoine Bertolotti.  
452 Validation: Patrick Gérardin, Cécile Levin. Visualization: Patrick Gérardin. Writing – original draft:  
453 Patrick Gérardin. Writing – review & editing: Patrick Gérardin, Olivier Maillard, Léa Bruneau, Frédéric  
454 Accot, Florian Legrand, Patrice Poubeau, Rodolphe Manaquin, Fanny Andry, Antoine Bertolotti and  
455 Cécile Levin.

456

### 457 **List of abbreviations** (alphabetic order)

458 **aOR:** Adjusted odds ratio

459 **AUC:** Area under receiver operating characteristic curve

460 **CIR:** Cumulative incidence rate (attack rate)

461 **CNR:** *Centre national de reference*

462 **COVID-19:** Coronavirus 2019

463 **DENV:** Dengue virus

464 **ICU:** Intensive Care Unit

465 **MHL test:** Multinomial Hosmer-Lemeshow test

466 **MLR:** Multinomial logistic regression

467 **OFIs:** Other febrile illnesses

468 **RT-PCR:** Reverse transcription – polymerase chain reaction

469 **SARS-CoV-2:** Severe Acute Respiratory Syndrome Coronavirus 2

470 **SpO2:** Pulse oxymetry

471 **UDACS:** *Unite de dépistage ambulatoire du coronavirus sud*

472 **URTI:** Upper respiratory tract infection

473 **VOCs:** variants of concerns

474 **95% CI:** 95% confidence interval

475

476 **Funding:** None

477

478 **Potential conflicts of interest:** All authors would like to report that there are no conflicts of interest  
479 in relation to this research. All authors have signed the ICMJE disclosure form for potential conflicts  
480 of interest.

481

482 **Data availability statement:** Data are entirely accessible through a data repository through the  
483 publication of this article.

484

## 485 **References**

486 1. Caron M, Paupy C, Grard G, Becquart P, Mombo I, Nso BB, et al. Recent introduction  
487 and rapid dissemination of Chikungunya virus and Dengue virus serotype 2 associated  
488 with human and mosquito coinfections in Gabon, central Africa. *Clin Infect Dis* 2012; 55:  
489 e45-53. <http://dx.doi:10.1093/cid/cis530>. Epub 2012 Jun 5.

- 490 2. Mejia-Parra JL, Aguilar-Martinez S, Fernandez-Mogollon JL, Luna C, Bonilla-Aldana DK,  
491 Rodriguez-Morales AJ, et al. Characteristics of patients coinfecting with Severe Acute Respiratory  
492 Syndrome Coronavirus 2 and dengue virus, Lambayeque, Peru, May–August 2020: A  
493 retrospective analysis. *Travel Med Infect Dis* 2021; 43: 102132.  
494 <https://dx.doi.org/10.1016/j.tmaid.2021.102132>. Epub 2021 Jun 26.
- 495 3. Huang SY, Lee IK, Wang L, Liu JW, Hung SC, Chen CC, et al. Use of simple clinical and  
496 laboratory predictors to differentiate influenza from dengue and other febrile illnesses in  
497 the emergency room. *BMC Infect Dis* 2014; 14: 623. [http://dx.doi.org/10.1186/s12879-014-](http://dx.doi.org/10.1186/s12879-014-0623-z)  
498 [0623-z](http://dx.doi.org/10.1186/s12879-014-0623-z).
- 499 4. Wilder-Smith A, Tissera H, Ooi EE, Coloma J, Scott TW, Gubler DJ. Preventing dengue  
500 epidemics during COVID-19 pandemic. *Am J Trop Med Hyg* 2020; 103: 570-571.  
501 <http://dx.doi.org/10.4269/ajtmh.20-0480>.
- 502 5. Gérardin P, Guernier V, Perrau J, Fianu A, Le Roux K, Grivard P, et al. Estimating  
503 Chikungunya prevalence in La Réunion island outbreak by serosurveys: two methods for  
504 two critical times of the epidemic *BMC Infect Dis* 2008; 8: 99. [http://dx.doi.org/10.1186/1471-](http://dx.doi.org/10.1186/1471-2334-8-99)  
505 [2334-8-99](http://dx.doi.org/10.1186/1471-2334-8-99).
- 506 6. Vincent M, Larrieu S, Vilain P, Etienne A, Solet JL, François C, et al. From the threat to  
507 the large outbreak: dengue on Reunion island. *Euro Surveill* 2019; 24: 1900346.  
508 <http://dx.doi.org/10.2807/1560-7917.ES.2019.24.47.1900346>.
- 509 7. Wilkinson DA, Lebarbenchon C, Atyame C, Hafsia S, Jaffar-Bandjee MC, Menudier-Yemandja L, et  
510 al. Genomic insights into early SARS-CoV-2 strains isolated in Reunion Island. *MedRxiv* 2021 Jan  
511 6. <https://doi.org/10.1101/2021.01.21.21249623>.
- 512 8. Wynants L, Van Calster B, Collins GS, Riley RD, Heinze G, Schuit E, et al. Prediction  
513 models for diagnosis and prognosis of covid-19: systematic review and critical appraisal. *BMJ*  
514 2020;369:m1328. <https://dx.doi.org/10.1136/bmj.m1328>.
- 515 9. Joubert A, Andry F, Bertolotti A, Accot F, Koumar Y, Legrand F, et al. Distinguishing non  
516 severe cases of dengue from COVID-19 in the context of co-epidemics: a cohort study in

- 517 a SARS-CoV-2 testing center on Reunion island. *PLoS Negl Trop Dis* 2021; 15:  
518 e0008879. [https://dx.doi/10.1371/journal.pntd.8879](https://dx.doi.org/10.1371/journal.pntd.8879).
- 519 10. Leening MJG, Steyerberg EW, Van Calster B, D'Agostino RB, Pencina MJ. Net reclassification  
520 improvement and integrated discrimination improvement require calibrated models: relevance  
521 from a marker and a model perspective. *Stat Med* 2014; 33: 3415-8. [https://dx.doi/10.](https://dx.doi.org/10.1002/sim.6133)  
522 1002/sim.6133.
- 523 11. Marty FM, Chen K, Verrill KA. How to obtain a nasopharyngeal swab specimen. *New Engl J Med*  
524 2020; 382; e76. [https://dx.doi/10.1056/NEJMc2010260](https://dx.doi.org/10.1056/NEJMc2010260).
- 525 12. Fagerland MW, Hosmer DW. A generalized Hosmer-Lemeshow goodness-of-fit test for  
526 multinomial logistic regression models. *Stata Journal* 2012; 12: 447-53.  
527 [https://dx.doi/10.1177/1536867X1201200307](https://dx.doi.org/10.1177/1536867X1201200307).
- 528 13. Verbackel JY, Steyerberg EW, Uno H, De Cock B, Wynants L, Collins GS, et al. ROC curves for  
529 clinical prediction models part 1. ROC plots showed no added value to the AUC when evaluating  
530 the performance of clinical prediction models. *J Clin Epidemiol* 2020; 126: 207-15.  
531 [https://dx.doi/10.1016/j.clinepi.2020.01.028](https://dx.doi.org/10.1016/j.clinepi.2020.01.028).
- 532 14. Van Calster B, Wynants L, Collins GS, Verbackel JY, Steyerberg EW. ROC curves for clinical  
533 prediction models part 3. The ROC plot: a picture that needs a 1000 words. *J Clin Epidemiol*  
534 2020; 126: 220-3. [https://dx.doi/10.1016/j.clinepi.2020.05.037](https://dx.doi.org/10.1016/j.clinepi.2020.05.037).
- 535 15. Van Calster B, Nieboer D, Vergouwe Y, De Cock B, Pencina MJ, Steyerberg EW. A calibration  
536 hierarchy for risk models was defined: from utopia to empirical data. *Stat Med* 2016; 74: 167-76.  
537 [https://dx.doi/10.1016/j.jclinepi.2015.12.005](https://dx.doi.org/10.1016/j.jclinepi.2015.12.005).
- 538 16. Lemeshow S, Hosmer DW. A review of goodness of fit statistics for use in the development of  
539 logistic regression models. *Am J Epidemiol* 1982; 115: 92-8.  
540 [https://dx.doi/10.1093/oxfordjournals.aje.a113284](https://dx.doi.org/10.1093/oxfordjournals.aje.a113284).
- 541 17. von Elm E, Altman DG, Egger M, Pocock SJ, Gøtzsche PC, Vandenbroucke JP; STROBE Initiative.  
542 The Strengthening the Reporting of Observational Studies in Epidemiology (STROBE)

- 543 statement: guidelines for reporting observational studies. *PLoS Med* 2007; 4: e296.  
544 [https://dx.doi/10.1371/journal.pmed.0040296](https://dx.doi.org/10.1371/journal.pmed.0040296).
- 545 18. Collins GS, Reitsma JB, Altman DG, Moons KG. Transparent reporting of a multivariable  
546 prediction model for individual prognosis or diagnosis (TRIPOD): the TRIPOD Statement. *BMC*  
547 *Med* 2015; 13: 1. [https://dx.doi/10.1186/s12916-014-0241-z](https://dx.doi.org/10.1186/s12916-014-0241-z).
- 548 19. Leteurtre S, Martinot A, Duhamel A, Proulx F, Grandbastien B, Cotting J, et al. Validation of the  
549 paediatric logistic organ dysfunction (PELOD) score: prospective, observational, multicentre  
550 study. *Lancet* 2003; 362: 192-7. [https://dx.doi/10.1016/S0140-6736\(03\)13908-6](https://dx.doi.org/10.1016/S0140-6736(03)13908-6).
- 551 20. Nowak MD, Sordillo EM, Gitman MR, Paniz-Mondolfi AE. Coinfection in SARS-CoV-2 infected  
552 patients: Where are influenza virus and rhinovirus/enterovirus? *J Med Virol* 2020; 92: 1699-  
553 1700. [https://dx.doi/10.1002/jmv.25953](https://dx.doi.org/10.1002/jmv.25953). Epub 2020 Jul 17.
- 554 21. Jin-Jung Y, Campèse C, Lévy-Bruhl D, Savitch Y; Santé Publique France. Grippe: bilan de la saison  
555 2019-2020. *Chêne G ed*: 2020 Oct 13; 10: 1-10. [https://www.santepubliquefrance.fr/maladies-  
556 et-traumatismes/maladies-et-infections-respiratoires/grippe/documents/bulletin-  
557 national/bulletin-epidemiologique-grippe.-bilan-de-la-surveillance-saison-2019-2020](https://www.santepubliquefrance.fr/maladies-et-traumatismes/maladies-et-infections-respiratoires/grippe/documents/bulletin-national/bulletin-epidemiologique-grippe.-bilan-de-la-surveillance-saison-2019-2020).
- 558 22. Lokida D, Lukman N, Salim G, Butar-butur DP, Kosasih H, Wulan WN, et al. Diagnosis of COVID-19  
559 in a dengue-endemic area. *Am J Trop Med Hyg.* 2020; 10: 1220-2. [https://dx.doi/  
560 10.4269/ajtmh.20-0676](https://dx.doi.org/10.4269/ajtmh.20-0676).
- 561 23. Vanroye F, Van den Bossche D, Brosius I, Tack B, Van Esbroek M, Jacobs J. COVID-19 antibody  
562 detecting rapid diagnostic tests show high cross-reactivity when challenged with pre-pandemic  
563 malaria, schistosomiasis and dengue samples. *Diagnostics (Basel)* 2021; 11: 1163. [https://dx.doi/  
564 10.3390/diagnostics11071163](https://dx.doi.org/10.3390/diagnostics11071163).
- 565 24. Khandker SS, Nik Hashim NHH, Deris ZZ, Shueb RH, Islam MA. Diagnostic accuracy of rapid  
566 antigen test kits for detecting SARS-CoV-2: a systematic review and meta-analysis of 17,171  
567 suspected COVID-19 patients. *J Clin Med* 2021; 10: 3493. [https://dx.doi/10.3390/jcm10163493](https://dx.doi.org/10.3390/jcm10163493).

- 568 25. Van Calster B, Steyerberg EW, Harrell FH. Risk prediction for individuals. *JAMA* 2015; 314: 1875.  
569 <https://dx.doi/10.1001/jama.2015.12215>.
- 570 26. Van Calster B, Vergouwe Y, Looman CWN, Van Belle V, Timmerman D, Steyerberg EW. Assessing  
571 the discriminative ability of risk models for more than two outcome categories. *Eur J Epidemiol*  
572 2012; 27: 761–70. <https://dx.doi/10.1007/s10654-012-9733-3>.
- 573 27. Van Hoorde K, Vergouwe Y, Timmerman D, Van Huffel S, Steyerberg EW, Van Calster B.  
574 Assessing calibration of multinomial risk prediction models. *Stat Med* 2014; 33: 2585-96.  
575 <https://dx.doi/10.1002/sim.6114>.
- 576 28. Usman MS, Siddiqi TJ, Khan MS, Patel UK, Shahid I, Ahmed J, et al. Is there a smoker's paradox in  
577 COVID-19? *BMJ Evid Based Med*. 2020 Aug 11:bmjebm-2020-111492.  
578 <https://dx.doi/10.1136/bmjebm-2020-111492>. Online ahead of print.
- 579 29. Chu DK, Akl EA, Duda S, Solo K, Yaacoub S, Schünemann HJ, COVID-19 Systematic Urgent Review  
580 Group Effort (SURGE) Study Authors. Physical distancing, face masks, and eye protection to  
581 prevent person-to-person transmission of SARS-CoV-2 and COVID-19: a systematic review and  
582 meta-analysis. *Lancet* 2020; 395: 1973-87. [https://dx.doi/0.1016/S0140-6736\(20\)31142-9](https://dx.doi/0.1016/S0140-6736(20)31142-9). Epub  
583 2020 Jun 1.
- 584 30. Buitrago-Garcia D, Egli-Gany D, Counotte MJ, Hossmann S, Imeri H, Ipekci AM et al. Occurrence and  
585 transmission potential of asymptomatic and presymptomatic SARSCoV-2 infections: A living  
586 systematic review and meta-analysis. *PLoS Med*. 2020; 17: e1003346. [https://dx.doi/](https://dx.doi/10.1371/journal.pmed.1003346)  
587 [10.1371/journal.pmed.1003346](https://dx.doi/10.1371/journal.pmed.1003346). eCollection 2020 Sep.
- 588 31. Premaratna R, Pathmeswaran A, Amarasekara NDDM, Motha MBC, Perera KVHKK, de Silva HJ. A  
589 clinical guide for early detection of dengue fever and timing of investigations to detect patients  
590 likely to develop complications. *Trans R Soc Trop Med Hyg* 2009;103: 127-31. [https://dx.doi/10.](https://dx.doi/10.1016/j.trstmh.2008.07.024)  
591 [1016/j.trstmh.2008.07.024](https://dx.doi/10.1016/j.trstmh.2008.07.024).
- 592 32. Riddell A, Babiker ZO. Imported dengue fever in East London: a 6-year retrospective  
593 observational study. *J Travel Med* 2017; 24: 1-6. <https://dx.doi/10.1093/jtm/tax015>.



- 594 33. El-Anwar MW, Eesa M, Mansour W, Zake LG, Hendawy E. Analysis of Ear, Nose and Throat  
595 Manifestations in COVID-19 Patients. *Int Arch Otorhinolaryngol.* 2021; 25: e343-e348.  
596 <https://dx.doi.org/10.1055/s-0041-1730456>.
- 597 34. Gu W, Deng X, Reyes K, Hsu E, Wang C, Sotomayor-Gonzalez A, et al. Associations of early  
598 COVID-19 cases in San Francisco with domestic and international travel. *Clin Infect Dis* 2020; 71:  
599 2976-80. <https://dx.doi.org/10.1093/cid/ciaa599>.
- 600 35. Krol P, Coolen-Allou N, Teyseyre L, Traversier N, Beasley F, Nativel M, et al. Differential  
601 diagnoses of severe COVID-19 in tropical areas: the experience of Reunion Island. *Trop Med Int*  
602 *Health* 2021; 26: 444-52. <https://dx.doi.org/10.1111/tmi.13542>.
- 603 36. Nicolete VC, Rodrigues PT, Johansen IC, Corder RM, Tonini J, Cardoso MA et al. Interacting  
604 epidemics in Amazonian Brazil: prior dengue infection associated with increased COVID-19 risk  
605 in a population-based cohort study. *Clin Infect Dis* 2021; ciab410.  
606 <https://dx.doi.org/10.1093/cid/ciab410>. Online ahead of print.
- 607 37. Simons D, Shahab L, Brown J, Perski O. The association of smoking status with SARS-CoV-2  
608 infection, hospitalization and mortality from COVID-19: a living rapid evidence review with  
609 Bayesian analyses (version 7). *Addiction* 2021; 116: 1319-68. <https://dx.doi.org/10.1111/add.15276>.  
610 Epub 2020 Nov 17.
- 611 38. Romero-Gameros CA, Colin-Martínez T, Waizel-Haiat S, Vargas-Ortega G, Ferat-Osorio E,  
612 Guerrero-Paz JA, et al. Diagnostic accuracy of symptoms as a diagnostic tool for SARS-CoV 2  
613 infection: a cross-sectional study in a cohort of 2,173 patients. *BMC Infect Dis.* 2021; 21: 255.  
614 <https://dx.doi.org/10.1186/s12879-021-05930-1>.
- 615 39. Rosso F, Parra-Lara LG, Agudelo-Rojas OL, Martinez-Ruiz DM. Differentiating dengue from  
616 COVID-19: comparison of cases in Colombia. *Am J Trop Med Hyg* 2021; tpmd200912.  
617 <https://dx.doi.org/10.4269/ajtmh.20-0912>. Online ahead of print.

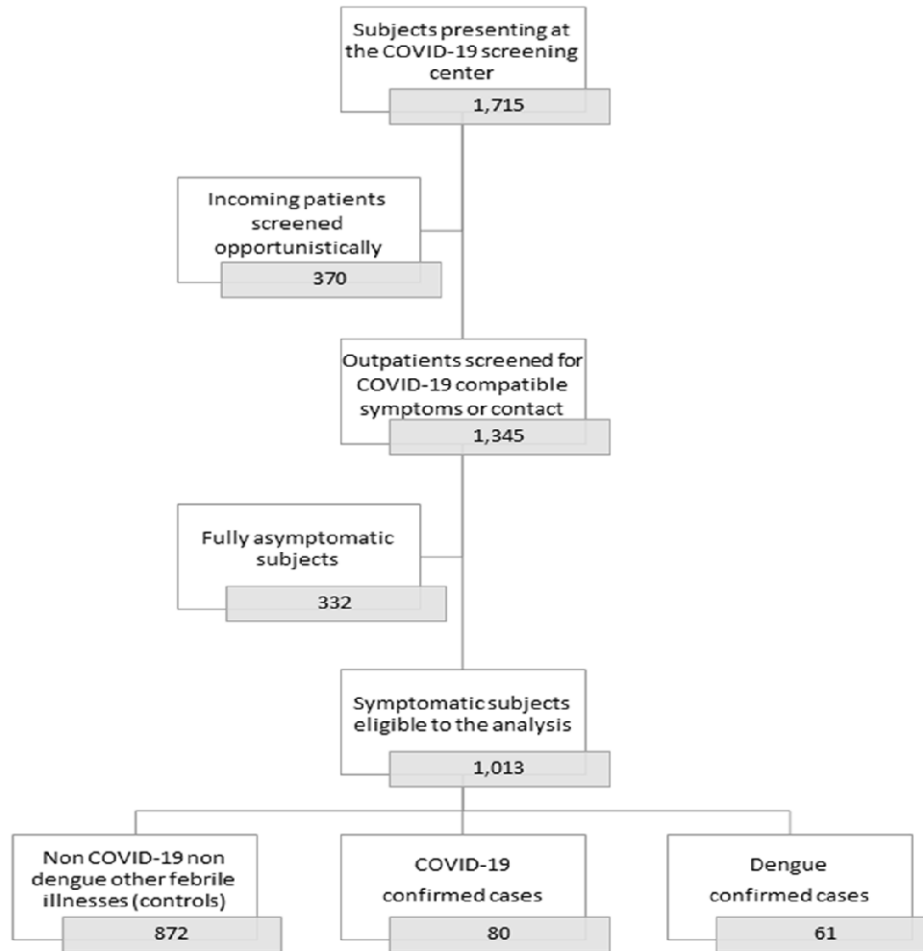
- 618 40. Ruiy W, Hsu SY, Tsai HL, CT Chen. COVID-19 mimicking dengue fever with the initial  
619 manifestation of retro-orbital pain – a rare case. *J Formos Med Assoc* 2020; 119: 1715-16.  
620 <https://dx.doi/10.1016/j.jfma.2020.05.039>. Epub 2020 Jun 4.
- 621 41. Guzman MG, Gubler DJ, Izquierdo A, Martinez E, Haldstead SB. Dengue infection. *Nat Rev Dis*  
622 *Primers* 2016; 2: 16055. <https://dx.doi/10.1038/nrdp.2016.55>.
- 623 42. Challen R, Brooks-Pollock E, Read JM, Dyson L, Tsaneva-Atanasova K, Danon L. Risk of mortality  
624 in patients infected with SARS-CoV-2 variant of concern 202012/1: matched cohort study. *BMJ*  
625 2021; 372: n579. <https://dx.doi/10.1136/bmj.n579>.
- 626 43. Faria NR, Mellan TA, Whittaker C, Claro IM, Candido DdS, Mishra S, et al. Genomics and  
627 epidemiology of the P1.SARS-CoV-2 lineage in Manaus, Brazil. *Science* 2021; 372(6544): 815-21.  
628 <https://dx.doi/10.1126/science.abh.2644>. Epub 2021 Apr 14.
- 629 44. Puech B, Legrand A, Simon O, Combe C, Jaffar-Bandjee MC, Caron M, et al. Prognosis of  
630 critically-ill patients with acute respiratory failure due to SARS-CoV-2 (501Y.V2) variant: a  
631 multicenter retrospective matched cohort study. *Research Square* 2021. [https://dx.doi/](https://dx.doi/10.21203/rs.3.rs-80608v2)  
632 [10.21203/rs.3.rs-80608v2](https://dx.doi/10.21203/rs.3.rs-80608v2).
- 633 45. Ong SWX, Chiew CJ, Ang LW, Mak TM, Cui L, Toh MPHS, et al. Clinical and virological features of  
634 SARS-CoV-2 variants of concern: a retrospective cohort study comparing B.1.1.7 (Alpha), B.1.315  
635 (Beta), and B.1.617.2 (Delta). *Clin Infect Dis* 2021; ciab721. [https://dx.doi/](https://dx.doi/10.1093/cid/ciab721)  
636 [10.1093/cid/ciab721](https://dx.doi/10.1093/cid/ciab721). Online ahead of print.

**Table 1. Final best fit multinomial logistic regression model distinguishing the independent predictors of COVID-19 and dengue from those of other febrile illnesses among 969 participants who consulted at a COVID-19 screening center in Saint Pierre (Reunion Island) during the COVID-19 dengue co-epidemics from 23 March to 10 May 2020**

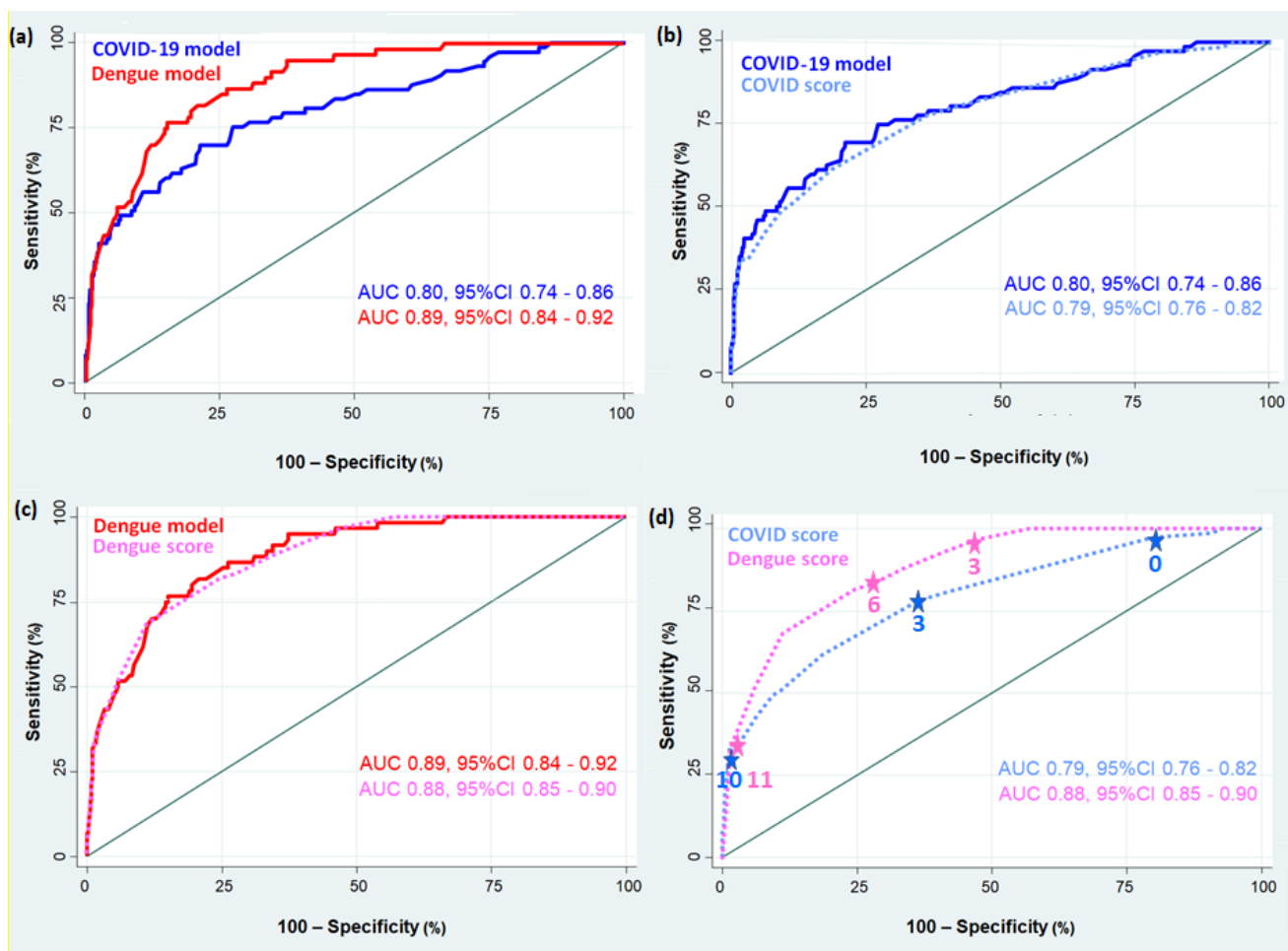
Outcomes (versus other febrile illnesses as controls*)	COVID-19 (N = 73)					Dengue (N = 60)				
	Predictors	n	CIR, (%)	aOR	95% CI	Points	n	CIR, (%)	aOR	95% CI
Contact with a COVID-19 positive case	40	15.38	<b>4.26</b>	<b>2.33 to 7.78</b>	<b>+ 3</b>	6	2.31	0.71	0.26 to 1.87	0
Return from travel abroad < 15 days	38	16.03	<b>3.53</b>	<b>2.05 to 6.05</b>	<b>+ 3</b>	6	2.53	0.41	0.15 to 1.05	- 1
Previous individual episode of dengue	4	9.06	2.16	0.56 to 8.29	+ 1	9	20.45	<b>4.50</b>	<b>1.68 to 12.00</b>	<b>+ 3</b>
Active smoker †	4	2.53	<b>0.25</b>	<b>0.09 to 0.67</b>	<b>- 3</b>	12	7.59	1.38	0.65 to 2.91	0
Cough	32	6.82	0.95	0.53 to 1.68	0	17	3.62	<b>0.36</b>	<b>0.18 to 0.70</b>	<b>- 2</b>
Body ache ‡	29	7.09	1.26	0.70 to 2.24	0	52	12.71	<b>6.35</b>	<b>2.56 to 15.71</b>	<b>+ 5</b>
Anosmia	26	27.96	<b>7.64</b>	<b>4.13 to 14.12</b>	<b>+ 7</b>	3	3.23	0.47	0.11 to 2.01	- 1
Headache	28	5.70	0.92	0.54 to 1.55	0	55	11.20	<b>5.51</b>	<b>1.85 to 16.41</b>	<b>+ 5</b>
Retro-orbital pain	1	2.27	0.53	0.06 to 4.53	- 1	17	38.64	<b>4.42</b>	<b>2.03 to 9.59</b>	<b>+ 5</b>
Upper respiratory tract infection symptoms #	28	5.63	0.53	<b>0.31 to 0.90</b>	<b>- 1</b>	20	4.02	<b>0.51</b>	<b>0.26 to 0.98</b>	<b>- 1</b>
Presentation > 3 days after symptom onset	53	9.55	1.71	0.94 to 3.10	+ 1	24	4.32	0.75	0.39 to 1.42	0

Multinomial logistic regression model with other non COVID-19 non dengue febrile illnesses\*, taken as controls. Data are numbers, cumulative incidence rates (CIR) expressed as percentages, adjusted odd ratios (aOR), 95% confidence intervals (95% CI). † Current smoker, as compared to never smoker and past smoker; ‡ muscle pain or backache with tightness and/or stiffness; # sore throat, runny nose, nasal congestion, or sneezing. 44 Participants with missing data excluded from the model (1013-969) of whom 42 had missing information on the delay of presentation, 1 on the return from travel abroad, 1 on a previous episode of dengue. The indicators of performance of the model are as follows: Bayesian information criterion -5709, Goodness of fit chi-2 test's probability 0.31, areas under the receiver operating characteristic curves 0.80 (95%CI 0.74-0.86) and 0.89 (95%CI 0.84-0.92), respectively. For COVID-19 prediction, the estimated probability of being infected is  $\text{Prob}_{(Y=1/X)} = 1 / (1 + \exp^{-(-3.82 + \sum \beta_i \times X_j)})$  and the beta coefficients of the model are as follows:  $\sum \beta_i \times X_j = 1.45 X_1 + 1.26 X_2 + 0.77 X_3 - 1.37 X_4 - 0.05 X_5 + 0.23 X_6 + 2.03 X_7 - 0.08 X_8 - 0.63 X_9 - 0.64 X_{10} + 0.54 X_{11}$  and intercept coefficient is - 3.82. For dengue prediction, the estimated probability of being infected is  $\text{Prob}_{(Y=1/X)} = 1 / (1 + \exp^{-(-4.40 + \sum \beta_i \times X_j)})$  and the beta coefficients of the model are as follows:  $\sum \beta_i \times X_j = -0.35 X_1 - 0.90 X_2 + 1.50 X_3 + 0.32 X_4 - 1.02 X_5 + 1.85 X_6 - 0.75 X_7 + 1.71 X_8 + 1.49 X_9 - 0.66 X_{10} - 0.29 X_{11}$  and intercept coefficient is - 4.40.

## Figures

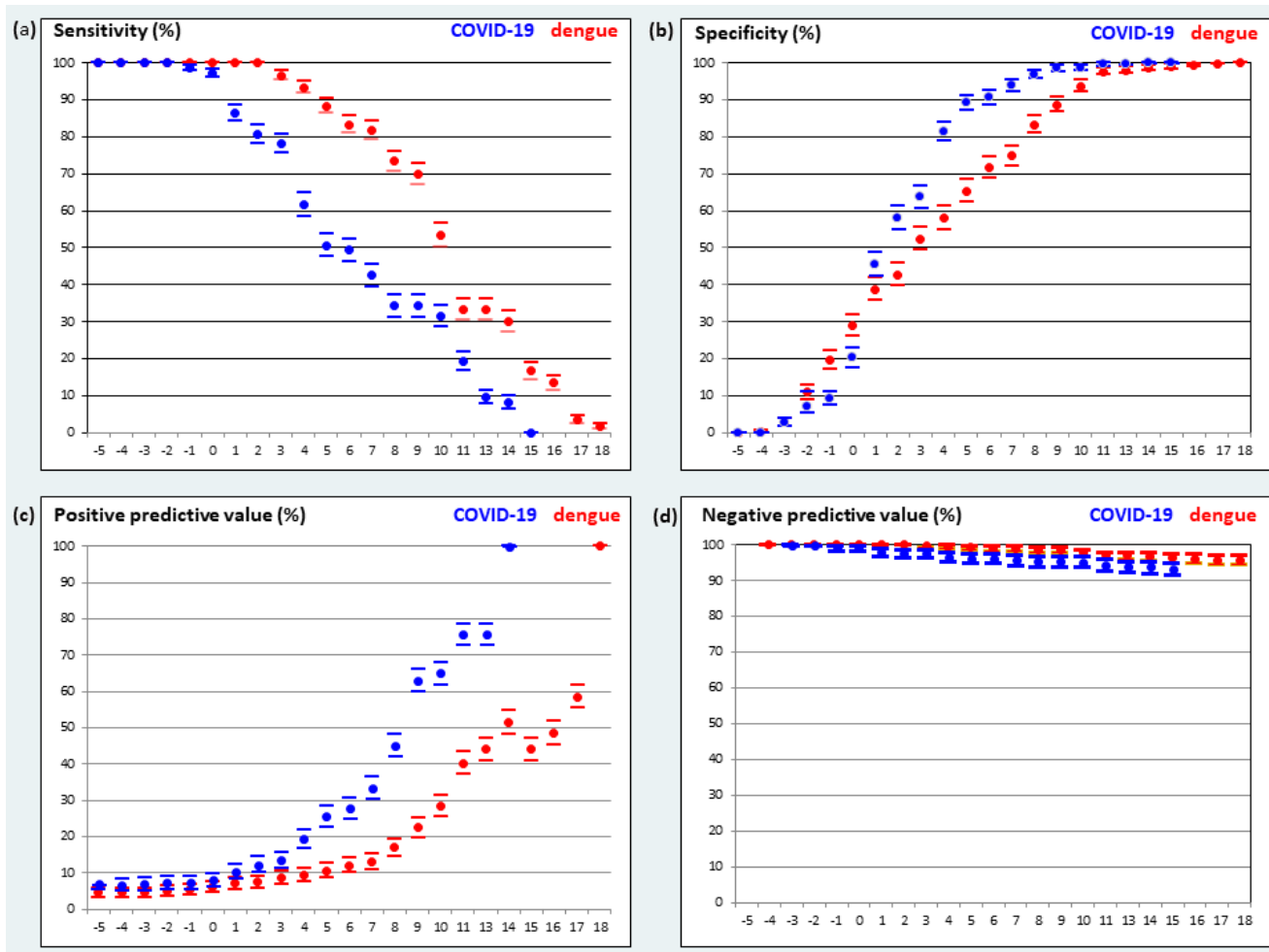


**Figure 1.** Study population for differentiating dengue and COVID-19 from other febrile illnesses in co-epidemics



**Figure 2.** Discriminative ability of the final model and of COVIDENGUE scores for COVID-19 and dengue at Saint-Pierre, Reunion Island from 23 March to 10 May 2020

Notes: Areas under receiver operating characteristic (AUC) curves are given for the best fit compromise final models (reference models) and the COVIDENGUE scores before validation by bootstrapping. The better the model or the score discriminates, the more the ROC curve approaches the upper left corner of the plot. A model with no discriminative ability has a true ROC curve that lies on the diagonal line.



**Figure 3.** Diagnostic performances of the COVIDENGUE scores

