

The impact of SARS-CoV-2 vaccination on Alpha & Delta variant transmission: Supplementary material

Supplementary methods

Contact definition

Contacts were defined as follows in line with national guidelines:¹ a person who has been close to someone who has tested PCR-positive for COVID-19 anytime from 2 days before the person was symptomatic up to 10 days from onset of symptoms. The nature of the contact could include:

- Living in the same household OR
- Face to face contact (within 1 metre for any length of time) or skin to skin contact or someone the case coughed on OR
- Within 1 metre for 1 minute or longer OR
- Within 1-2 metres for more than 15 minutes OR
- Sexual contacts OR
- Travel in the same vehicle or a plane

Contacts named by more than one index patient in a 10-day period were excluded given ambiguity about the infection source if the contact tested positive.

The contact tracing data provided contained a single contact event type (household/accommodation, household visitor, events/activities, or work/education) per case-contact pair, which was determined by the original contact tracer in more specific categories which were then aggregated.

Vaccination status

Index cases and contacts were included where their vaccination status, obtained from National Immunisation Management Service, was known. Matching was performed using NHS numbers, which are unique to each person in the UK. As all vaccination records included an NHS number, absence of a matched record was classified as unvaccinated, accepting a small amount of misclassification from individuals vaccinated in other countries or in trials. Only individuals vaccinated with Pfizer-BioNTech BNT162b2 and AstraZeneca ChAdOx1 were included, as numbers receiving other vaccines were too few to analyse.

Classification of variants

Contacts of index cases tested between 01-January-2021 and 31-July-2021 were included as follows. Index cases with S-gene target failure (SGTF), used as a proxy for the Alpha (B.1.1.7) variant, were included up to 06-June-2021. During this period 5-95% of sequenced

infections were due to Alpha.² However following 06-June-2021, the Alpha variant accounted for $\leq 2\%$ of cases/week² (Figure S1), such that there was ambiguity about whether S gene target failure (SGTF) was due to Alpha or stochastic failure to amplify the S gene target at low viral loads with other lineages (predominantly Delta), which occurred in 1% of samples when Delta dominated at the end of July-2021. From the week beginning 10-May-2021 national spread of Delta meant that $>98\%$ of sequenced cases were either due to the Alpha or Delta variants,² such that we used detection of S gene on or after 10-May-2021 as a proxy for the Delta variant. Index cases without SGTF prior to 10-May-2021 were excluded, as it was not possible to distinguish which cases had the Delta variant.

Statistical methods details

We used multivariable Poisson regression to investigate how onward transmission, i.e., SARS-CoV-2 PCR-positive tests in contacts, varied with index case vaccination status and other variables. Poisson regression with robust standard errors^{3,4} was used in place of logistic regression to improve interpretability of model outputs given a common binary outcome.

We used natural cubic splines and log transformation to account for non-linear effects of continuous variables following truncation at the 1st and 99th centiles, for splines allowing up to 5 default-placed knots (9 for calendar time to allow greater flexibility) and choosing the best fitting models using the Bayesian information criterion (BIC). Time since second vaccination for cases and contacts was \log_2 transformed (on the basis of model fit), truncating time separately for each vaccine. Interactions between all model main effects were included with this improved model fit based on the BIC.

We used robust standard errors with clustering based on index case identifier to account for some index cases being included in the analysis more than once if the index case had multiple contacts not named by any other source.

All analyses were performed in R, version 4.1. The sandwich library's (version 3.0) vcovCL function was used to generate variance-covariance matrices accounting for repeated measurements. Heterogeneity rate ratios and 95% confidence intervals were calculated using interaction terms and contrasts between levels of categorical variables (determined using the glht function from the multcomp library [version 1.4]).

Extent of vaccine-associated reductions in transmission mediated via index case Ct values at diagnosis

We refitted models including index case Ct values to investigate the relationship between Ct values (indicative of viral load⁵) and transmission. We fitted the same final model as obtained for the main analysis, and added a non-linear term spline-based term for Ct value (with up to five default placed knots as above). We tested for interactions between Ct value

and all model main effects, retaining a single interaction with variant (Alpha vs. Delta) based on model fit using BIC as above.

As we find that vaccination status can impact index case Ct values, at least for Alpha variant infections, and that Ct values at index case diagnosis are associated with onward transmission, we performed a mediation analysis to assess the proportion of the total effect of index case vaccination on onward transmission that is mediated via changes in index case Ct values. To facilitate a mediation analysis using readily available methods, we fit separate models for the Alpha and Delta variants, and approximate the relationship between Ct value and onward transmission as linear (Figure 4B). Otherwise, the main outcome model remains the same. For the model representing the value of the mediator, Ct value, we use linear regression and the following covariates: index case vaccination status, time since 2nd index case vaccination, index case age (allowing for non-linearity), index case sex, index case symptoms and calendar time (also as a non-linear term). Analyses were performed using the `mediate` (version 4.5) package in R. Confidence intervals were generated using 1000 simulations and robust standard errors.

Sensitivity analyses – time window between case and contact PCR tests

We undertook two analyses to justify the choice of requiring contacts to be tested within 1-10 days of the index case. In the first we exploit that the likelihood of onward transmission and a PCR-positive result in a contact is approximately linearly related to the PCR Ct value recorded for the index case at diagnosis.⁶ It therefore follows that where the index case is the true source, we expect this relationship to be strongest, averaging over all possible intervals from the contact event to testing of the index case. Conversely, if we fail to identify the true index case then this relationship will attenuate towards no effect. We can therefore use this property to estimate what range of time intervals between index case test and contact test that are consistent with transmission, specifically in the direction from the index case to the contact. The initial plausible range of times is determined using prior data on the serial interval between cases in a transmission chain.⁷ We fitted univariable logistic regression models of the association between PCR-positive results in contacts and the Ct value in the putative index case. We fitted separate models for case-contact pairs where the contact's PCR test occurred -3, -2, -1, 0, 1, 2, 3, 4, 5, 6, 7, 8, 9, 10, 11, 12 or 13 days after the index case's PCR test. We fitted separate models for each day for Alpha and Delta variant index case infections. We then report how the odds ratio for a PCR-positive result in the contact per unit change in index case Ct value varied by time interval between case and contact tests.

In a separate sensitivity analysis we repeated the main analysis restricting to index cases and contacts where the contact was tested between 2 and 7 days following the index case.

Supplementary results

Excluded index cases and contacts

A total of 27,217 contacts were excluded with incomplete data (15.7%): 16,999 contacts had no recorded vaccine status, 11 missing index case Ct values, 9,849 missing a contact event type, 182 index case sex, 5 contact sex, and 171 contact's local area. The remaining 146,243 case-contact pairs had complete data for all study covariates.

Relationship between index case Ct value and onward transmission, by time between index case and contact PCR tests

The most common time interval between index case and contact PCR tests was 0 days, with most other contacts tested in the 7 days following the index case (Figure S5A).

The odds ratio for a PCR-positive test in the contact per unit change in index Ct value varied by the time interval between case and contact PCR tests (Figure S5B). For Alpha variant infections, the odds ratio was greatest for contact PCR tests done 1 to 10 days after the index case. For Delta, the odds ratio was greatest for tests 1 to 6 days after the index case. This suggests that these time intervals are most enriched for index cases that are the true source for the infection in their contact. Whereas, for 'contacts' tested before index cases the odds ratio attenuated to near 1, i.e. no effect, suggestive that the contacts acquired their infection from another source (some may even have been the source of the 'index case's' infection). As relatively few contacts were tested >7 days after the index case, the upper limit set on the time interval between tests is less critical.

Sensitivity analysis restricting to contacts tested 2-7 days after an index case

Findings were similar to the main analysis. A table analogous to Table 1 for the sensitivity analysis is shown as Table S5 and a figure analogous to Figure 1 as Figure S6.

Supplementary Tables

Model factors	Description	Notes	
Main exposures	Index patient vaccination status	Pre-specified interaction with index patient SARS-CoV-2 variant included	
	Index patient SARS-CoV-2 variant	Alpha; Delta	
Covariates	Contact event type		
	Index patient factors	Age	
		Sex	
		Symptom status	Symptoms were determined at the point of contact tracing, which followed a positive PCR test in the index case. Therefore, individuals who were symptomatic or pre-symptomatic at the contact event are classed as symptomatic. Those who had no symptoms up to the point of contact tracing are recorded as asymptomatic.
	Contact factors	Age	
		Sex	
		Vaccination status	Pre-specified interaction with index patient SARS-CoV-2 variant included
	Local area deprivation	Index of multiple deprivation (IMD) score for the local area (lower tier local authority, LTLA) containing the contact's home address. These data were obtained from publicly available national statistics: https://www.gov.uk/government/statistics/english-indices-of-deprivation-2019 .	
	Local area SARS-CoV-2 Incidence	Rolling 7-day average SARS-CoV-2 incidence in the contact's LTLA on the day on the contact's PCR test	
	Local area second vaccine uptake	The percentage of those eligible having received two vaccines in the contact's LTLA on the day of the contact's PCR test	
Calendar time			

Table S1. Model covariates.

Index case vaccination status	n	Age, median	Age, IQR	Female, n	Female, %	Symptomatic, n	Symptomatic, %	Alpha variant, n	Alpha variant, %
Unvaccinated	59,956	35	25 - 50	30,691	51.2	56,184	93.7	43167	59,956
Partial ChAdOx1	8,294	45	40 - 52	4,345	52.4	7,670	92.5	3024	8,294
Partial BNT162b2	20,927	28	22 - 35.5	10,107	48.3	19,634	93.8	3256	20,927
Fully ChAdOx1	15,086	49	36 - 57	7,590	50.3	14,182	94	67	15,086
Fully BNT162b2	4,235	48	32 - 60	2,621	61.9	3,754	88.6	127	4,235

Table S2. Index case demographics, symptom status, and infecting variant by index case vaccine status.

Contact vaccination status	n	Age, median	Age, IQR	Female, n	Female, %	Alpha variant, n	Alpha variant, %
Unvaccinated	65,117	37	26 - 51	34,654	53.2	52,321	80.3
Partial ChAdOx1	12,307	47	41 - 54	7,026	57.1	3,739	30.4
Partial BNT162b2	20,999	30	24 - 37	12,010	57.2	3,829	18.2
Fully ChAdOx1	32,363	53	45 - 58	18,888	58.4	151	0.5
Fully BNT162b2	15,457	51	38 - 60	10,628	68.8	337	2.2

Table S3. Contact demographics, and associated index case variant by contact vaccine status.

Characteristic	PCR tested contacts	PCR-positive contacts	% infected	aRR	95% CI	p-value
Variant						
Alpha	60,377	31,326	52	—	—	
Delta	85,866	23,341	27	1.24	1.12, 1.38	<0.001
Index case vaccination status						
Unvaccinated	76,401	35,459	46	—	—	
Partial ChAdOx1	11,236	3,878	35	0.90	0.86, 0.94	<0.001
Partial BNT162b2	31,039	7,947	26	0.88	0.85, 0.91	<0.001
Full ChAdOx1	21,421	6,067	28	0.48	0.30, 0.78	0.003
Full BNT162b2	6,146	1,316	21	0.32	0.21, 0.48	<0.001
Index case vaccination status * Variant						
Partial ChAdOx1 * Delta	7,617	2,236	29	1.06	1.00, 1.12	0.046
Partial BNT162b2 * Delta	27,122	6,162	23	0.94	0.90, 0.99	0.017
Full ChAdOx1 * Delta	21,322	6,053	28	1.58	0.97, 2.56	0.065
Full BNT162b2 * Delta	5,970	1,294	22	1.59	1.07, 2.35	0.021
Index case, per doubling of weeks since two weeks after second ChAdOx1 dose				1.08	1.05, 1.11	<0.001
Index case, per doubling of weeks since two weeks after second BNT162b2 dose				1.13	1.05, 1.21	0.001
Index case age	See Figure 2A					
Index case sex						
F	75,678	27,182	36	See Figure 2C		
M	70,565	27,485	39			
Index case symptoms						
Symptomatic	136,534	52,583	39	—	—	
Asymptomatic	9,709	2,084	21	0.53	0.50, 0.55	<0.001
Variant * Index case symptoms						
Delta * Asymptomatic	4,834	779	16	1.12	1.04, 1.22	0.005
Event type						
Household or accommodation	97,204	46,437	48	See Figures 2A, 2B		
Household Visitor	16,505	3,284	20			
Events / Activities	16,114	2,560	16			
Work or Education	16,420	2,386	15			
Contact vaccination status						
Unvaccinated	65,117	34,041	52	—	—	
Partial ChAdOx1	12,307	3,987	32	0.94	0.91, 0.98	0.004
Partial BNT162b2	20,999	6,756	32	0.85	0.82, 0.88	<0.001
Full ChAdOx1	32,363	7,241	22	0.40	0.27, 0.59	<0.001
Full BNT162b2	15,457	2,642	17	0.15	0.11, 0.21	<0.001

Characteristic	PCR tested contacts	PCR-positive contacts	% infected	aRR	95% CI	p-value
Contact vaccination status * Variant						
Partial ChAdOx1 * Delta	8,568	2,299	27	0.73	0.69, 0.77	<0.001
Partial BNT162b2 * Delta	17,170	5,040	29	0.79	0.76, 0.83	<0.001
Full ChAdOx1 * Delta	32,212	7,221	22	1.04	0.70, 1.53	0.85
Full BNT162b2 * Delta	15,120	2,611	17	1.28	0.92, 1.78	0.14
Contact, per doubling of weeks since two weeks after second ChAdOx1 dose				1.13	1.10, 1.16	<0.001
Contact, per doubling of weeks since two weeks after second BNT162b2 dose				1.27	1.21, 1.34	<0.001
Contact age	See Figure 2B					
Contact sex						
F	83,206	30,047	36	See Figures 2C, 2D and S2		
M	63,037	24,620	39			
Index of multiple deprivation, per 1000 change, higher indicates more deprived				1.01	1.01, 1.01	<0.001
Local SARS-CoV-2 incidence	See Figure S3					
Study day	See Figure S4					
Event type * Contact sex	See Figure S2					
Index case sex * Contact age	See Figure 2D					
Index case sex * Contact sex	See Figure 2C					
Event type * Index case age	See Figure 2A					
Event type * Contact age	See Figure 2B					
Index case age * Contact age	See Figure 2E					

Table S4. Multivariable logistic regression analysis of associations of PCR-positive results in contacts. aRR, adjusted rate ratio; CI, confidence interval; * indicates an interaction term. Non-linear relationships and associated interactions are shown in Figures 2 and S2-S4 as indicated. There is an interaction between variant and contact age, such that all rate ratios for variant are shown at a contact age of 18 years.

Characteristic	Alpha		Delta		Delta vs. Alpha	
	aOR	95% CI	aOR	95% CI	Interaction OR	95% CI
<i>Impact on onward transmission: Case vaccination status</i>						
Unvaccinated	—	—	—	—	—	—
Partial ChAdOx1	0.89	0.85, 0.94	0.95	0.91, 1.00	1.07	1.00, 1.14
Partial BNT162b2	0.88	0.84, 0.92	0.84	0.81, 0.87	0.96	0.91, 1.01
Full ChAdOx1	0.48	0.25, 0.93	0.78	0.71, 0.85	1.60	0.83, 3.07
Full BNT162b2	0.30	0.18, 0.49	0.48	0.35, 0.66	1.62	1.03, 2.58
<i>Contact vaccination status</i>						
Unvaccinated	—	—	—	—	—	—
Partial ChAdOx1	0.98	0.94, 1.03	0.73	0.70, 0.77	0.75	0.70, 0.80
Partial BNT162b2	0.89	0.86, 0.93	0.70	0.68, 0.73	0.79	0.75, 0.83
Full ChAdOx1	0.45	0.29, 0.69	0.46	0.42, 0.50	1.02	0.66, 1.56
Full BNT162b2	0.15	0.09, 0.22	0.21	0.17, 0.27	1.51	0.98, 2.34

Table S5. Sensitivity analysis: Relationship between PCR-positive results in contacts, and index case and contact vaccination status according to Alpha/Delta variant in the index case (restricting to contacts tested 2 to 7 days inclusive after an index case). Results for those with two vaccine doses are estimated at day 14 post second vaccine, see Figure S7 for trends with time post-second vaccine. aRR, adjusted rate ratio, CI confidence interval. Adjustment made for contact event type; index case factors - age, sex, and symptom status; contact factors - age, sex; local deprivation, local SARS-CoV-2 incidence and calendar time.

Index case vaccine status	Variant	Total effect	Average causal mediation effect, via Ct value	Average direct effect, not via Ct value	Proportion mediated
Full BNT162b2	Alpha	-0.37 (-0.48, -0.15)	-0.07 (-0.12, -0.04)	-0.30 (-0.43, -0.04)	0.18 (0.09, 0.64)
Full BNT162b2	Delta	-0.17 (-0.21, -0.13)	-0.04 (-0.05, -0.03)	-0.13 (-0.18, -0.08)	0.23 (0.17, 0.33)
Full ChAdOx1	Alpha	-0.37 (-0.50, -0.03)	-0.07 (-0.12, -0.02)	-0.30 (-0.45, 0.07)	0.16 (0.01, 0.80)
Full ChAdOx1	Delta	-0.10 (-0.12, -0.08)	-0.01 (-0.01, 0.00)	-0.09 (-0.11, -0.07)	0.07 (0.05, 0.10)
Partial BNT162b2	Alpha	-0.06 (-0.08, -0.04)	-0.02 (-0.03, -0.02)	-0.04 (-0.05, -0.02)	0.39 (0.30, 0.53)
Partial BNT162b2	Delta	-0.06 (-0.06, -0.05)	-0.01 (-0.01, -0.01)	-0.05 (-0.06, -0.04)	0.14 (0.11, 0.17)
Partial ChAdOx1	Alpha	-0.05 (-0.07, -0.03)	-0.02 (-0.02, -0.01)	-0.03 (-0.05, -0.02)	0.33 (0.23, 0.53)
Partial ChAdOx1	Delta	-0.04 (-0.05, -0.03)	0.00 (-0.01, 0.00)	-0.03 (-0.05, -0.02)	0.12 (0.07, 0.19)

Table S6. Extent of vaccine-associated reductions in transmission mediated via index case Ct values at diagnosis. The reference group for each comparison is unvaccinated index cases. Effects reported are averaged over the dataset, i.e. both vaccinated and unvaccinated contacts and all times since second vaccination in index cases. Because times since second vaccination to infection were typically longer for BNT162b2 than ChAdOx1, the average total effect for BNT162b is more similar to ChAdOx1 than is seen in Figure 1 where a representative range of times since second vaccination are shown.

Supplementary Figures

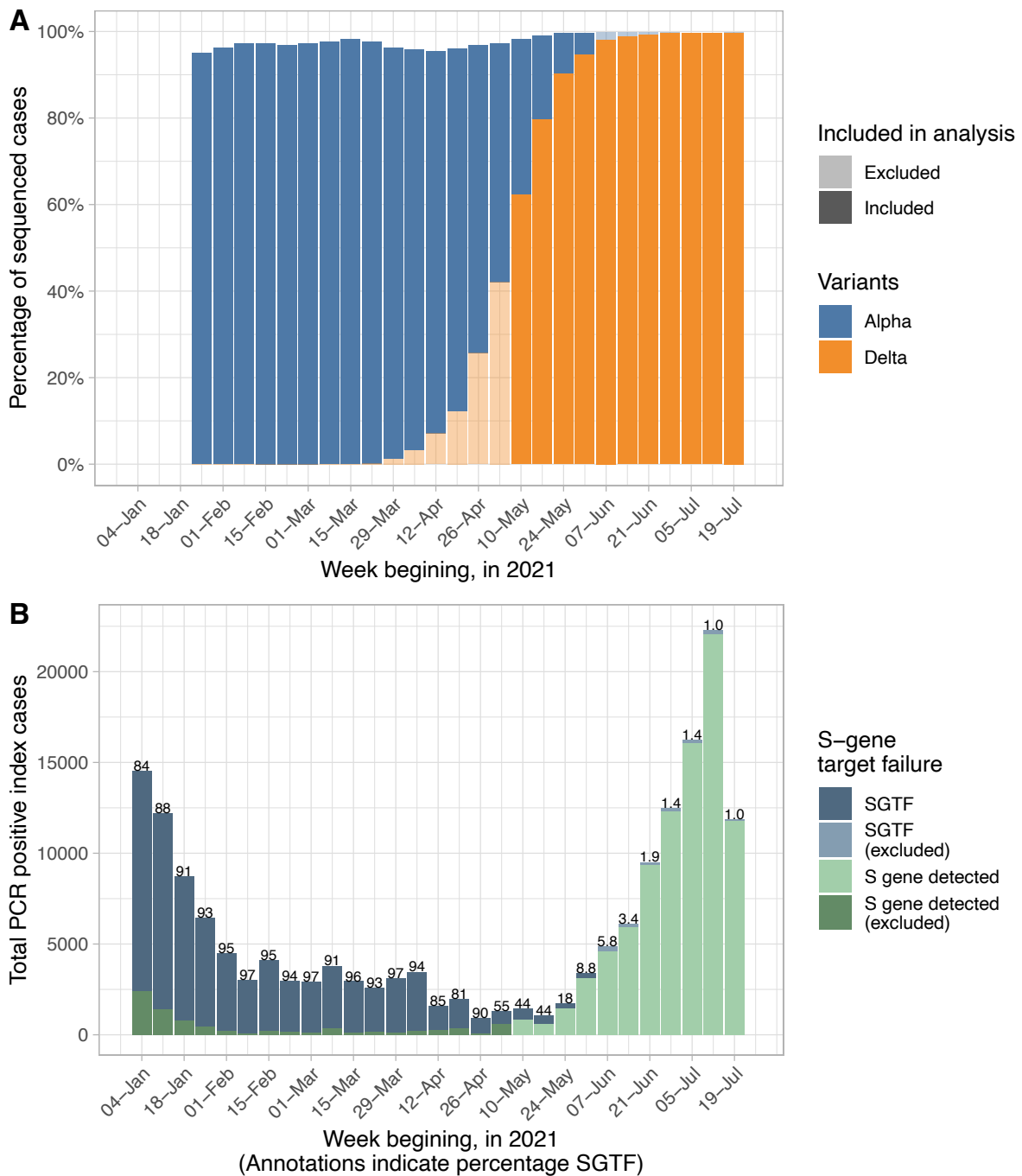


Figure S1. National incidence of Alpha and Delta variants as determined by whole genome sequencing (panel A) and index case incidence according to S-gene target failure (SGTF, panel B). In panel A, weeks for which index cases with presumed Alpha and Delta infections (see Methods) were included in the analysis are shown in the denser shading (sequencing not used to determine variant as not available for all index cases). Based on results of

national sequencing data available at <https://www.gov.uk/government/publications/investigation-of-novel-sars-cov-2-variant-variant-of-concern-20201201>. SGTF was seen in 1% of infections in the final two weeks of the study when Delta accounted for nearly all infections. Hence by only classifying index cases Alpha variant on the basis of SGTF in weeks where Alpha prevalence by sequencing exceeded $\geq 5\%$ we ensured misclassification was minimised. In panel B the percentage of index cases with SGTF is provided above each bar.

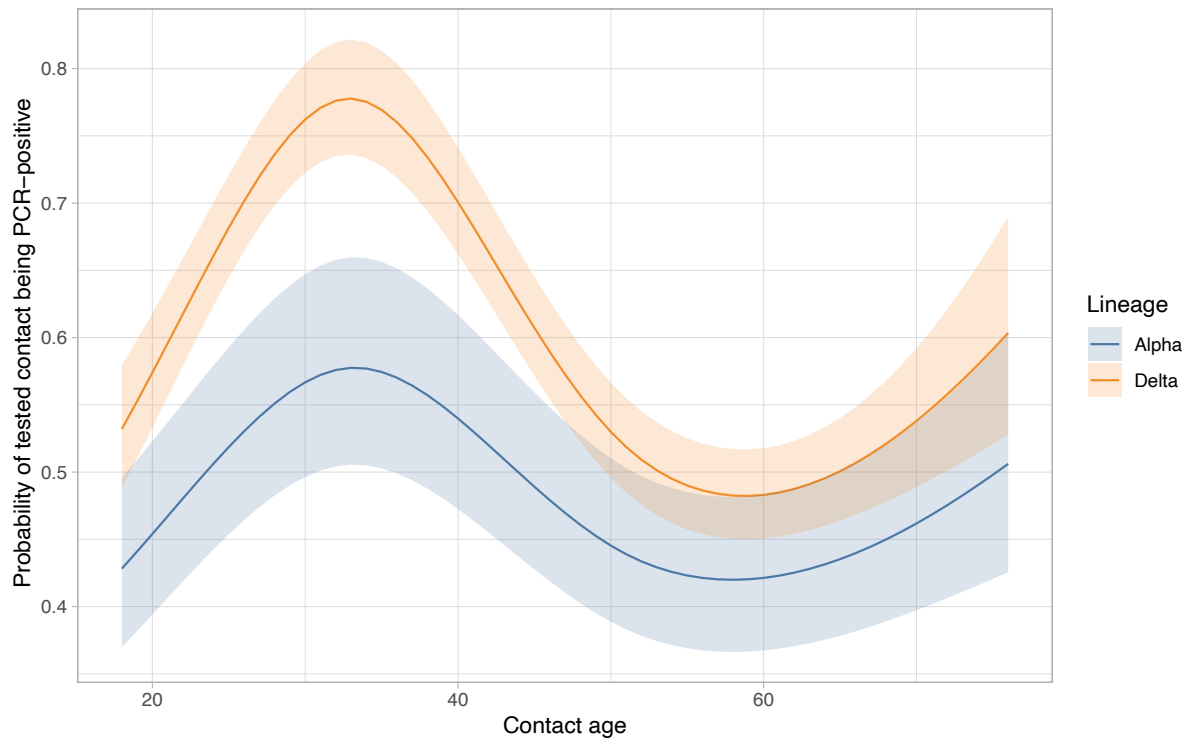


Figure S2. Relationship between contact age and variant and probability of a positive PCR test in a contact. All other continuous covariates are set to median values and categorical covariates to reference categories. The error bars indicate 95% confidence intervals.

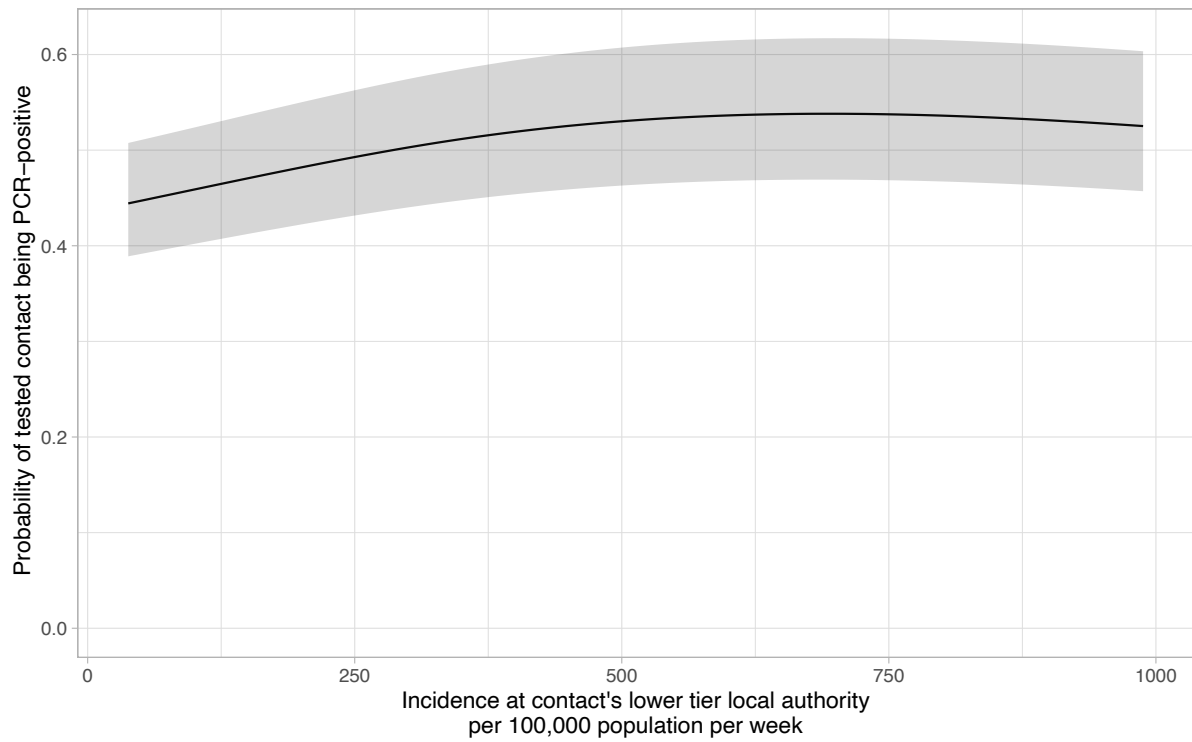


Figure S3. Relationship between local SARS-CoV-2 incidence and probability of a positive PCR test in a contact. All other continuous covariates are set to median values and categorical covariates to reference categories. The shaded area indicates the 95% confidence interval.

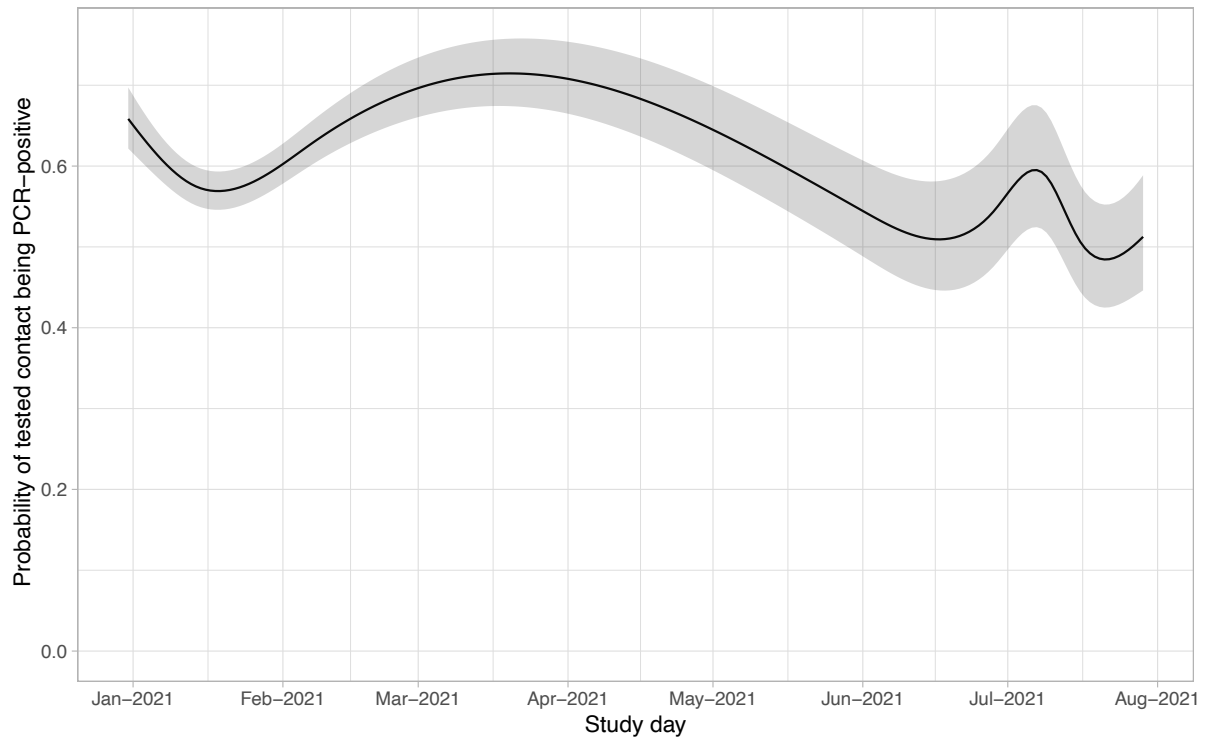


Figure S4. Relationship between study day and probability of a positive PCR test in a contact. All other continuous covariates are set to median values and categorical covariates to reference categories. The shaded area indicates the 95% confidence interval. Note “UEFA Euro 2020” European Football Championship held between 11 June and 11 July 2021.

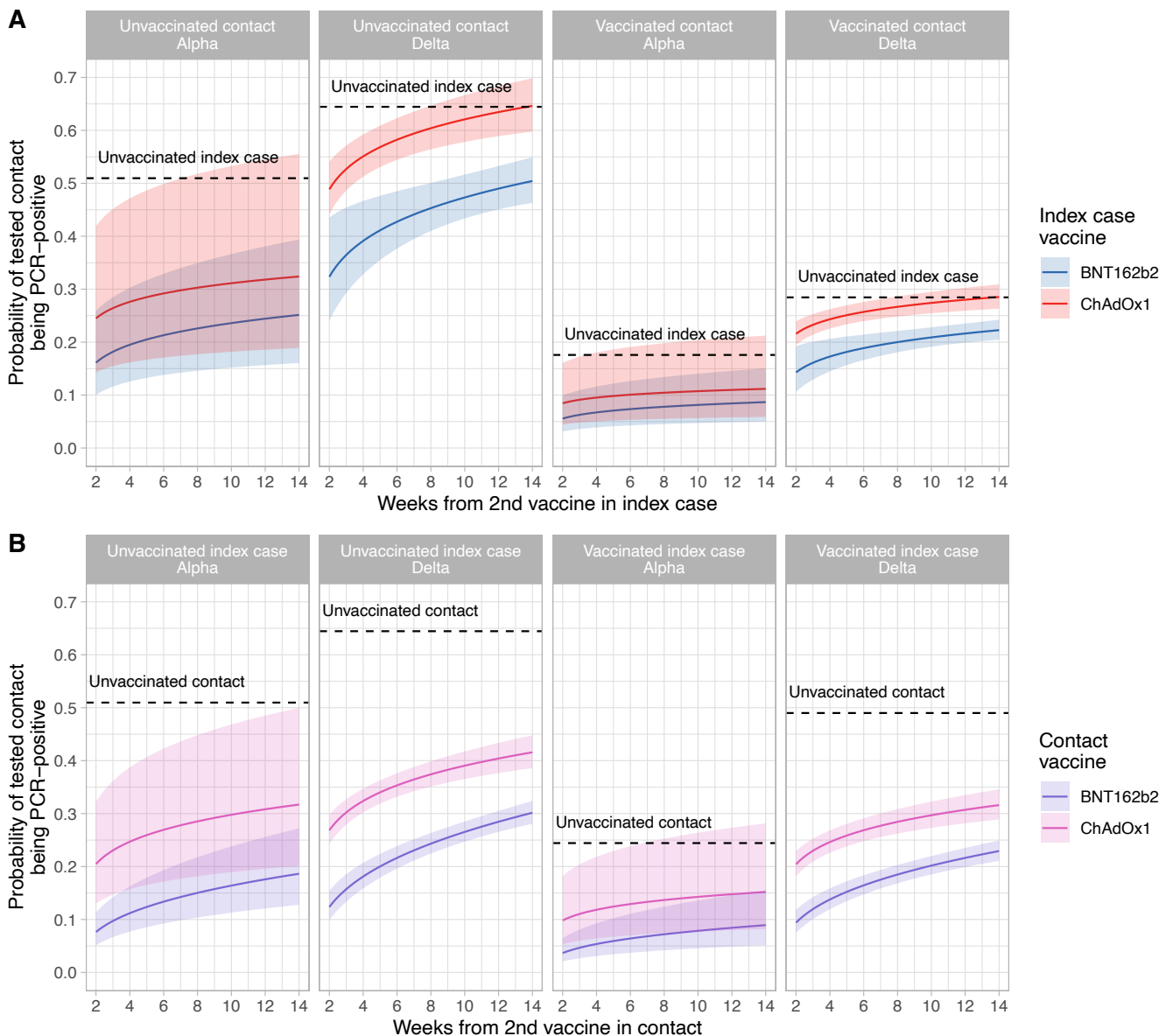


Figure S5. Estimated probability of a positive PCR test in contacts by time since second vaccination in index cases (panel A) and in contacts (panel B), variant, and vaccine type.

For panel A estimates are displayed for an unvaccinated contact and a fully BNT162b vaccinated contact at 12 weeks post second dose. For panel B estimates are shown for an unvaccinated index case a fully BNT162b vaccinated index case at 12 weeks post second dose. The dashed horizontal lines indicate the probability of a positive-PCR result in an unvaccinated contact of an unvaccinated index case. The shaded area indicates the 95% confidence interval. Adjustment made for covariates, set to reference values: contact event type (set to Household or accommodation); index case factors – age (median), sex (female), and symptom status (symptomatic); contact factors – age (median), sex (female); local deprivation (median), local SARS-CoV-2 incidence (median) and calendar time (median). Note only 26.2% of contacts had a PCR test, as testing was predominantly only performed if symptoms developed. Therefore, overall secondary attack rates are lower than shown here restricting only to contacts undergoing testing.

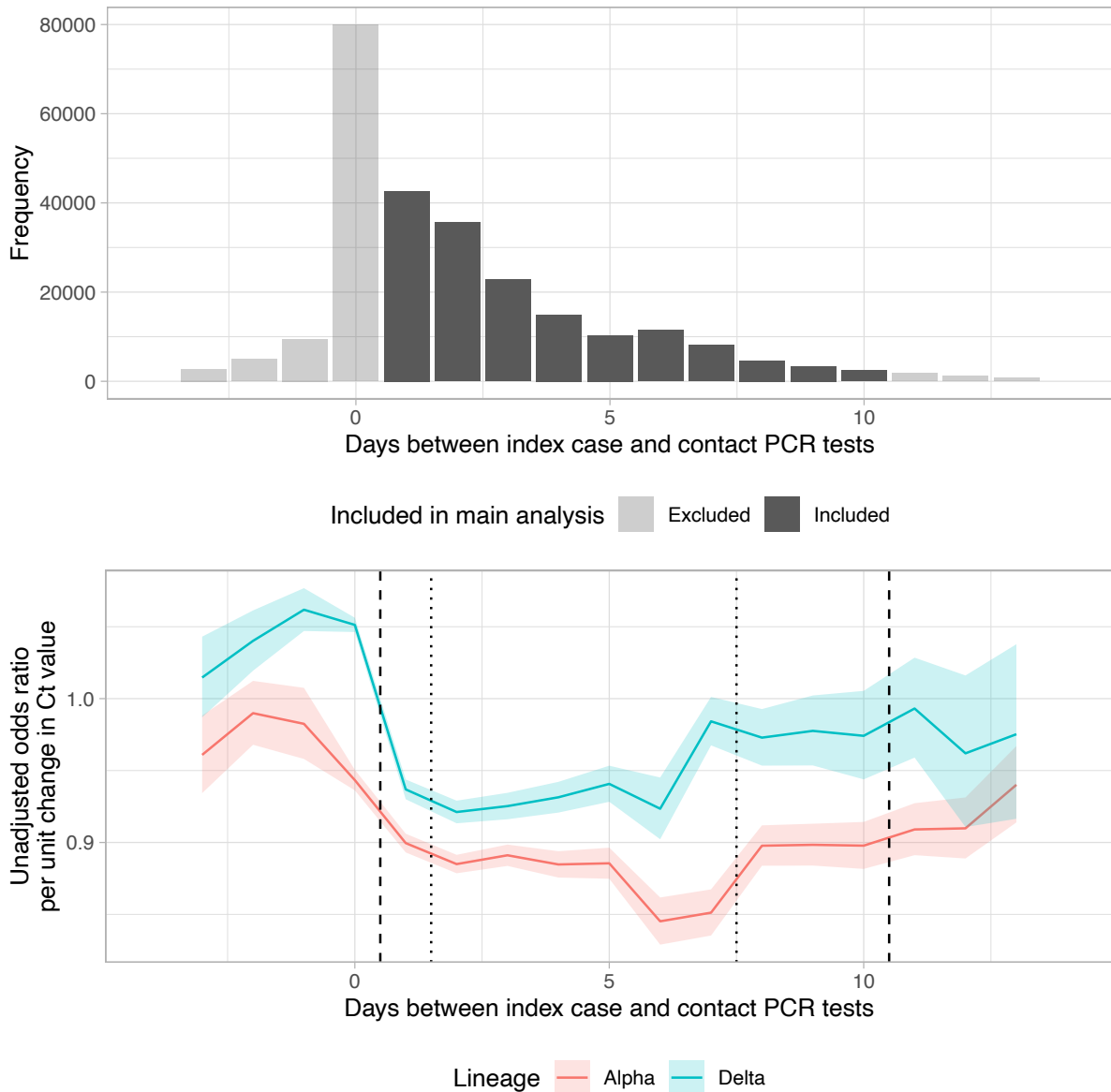


Figure S6. Relationship between index case Ct value and onward transmission, by time between index case and contact PCR tests. Panel A shows the distribution of days between index case and contact PCR tests in case-contact pairs, shaded according to which pairs were included in the main analysis. Panel B shows the univariable odds ratio for a positive-PCR result in a contact for each unit change in index case Ct value, according to days between index case test and contact test and SARS-CoV-2 variant. The dashed vertical lines indicate the cut-offs for inclusion in the main analysis (days 1-10 inclusive) and the dotted vertical lines the cut-offs for inclusion in a separate sensitivity analysis (days 2-7 inclusive).

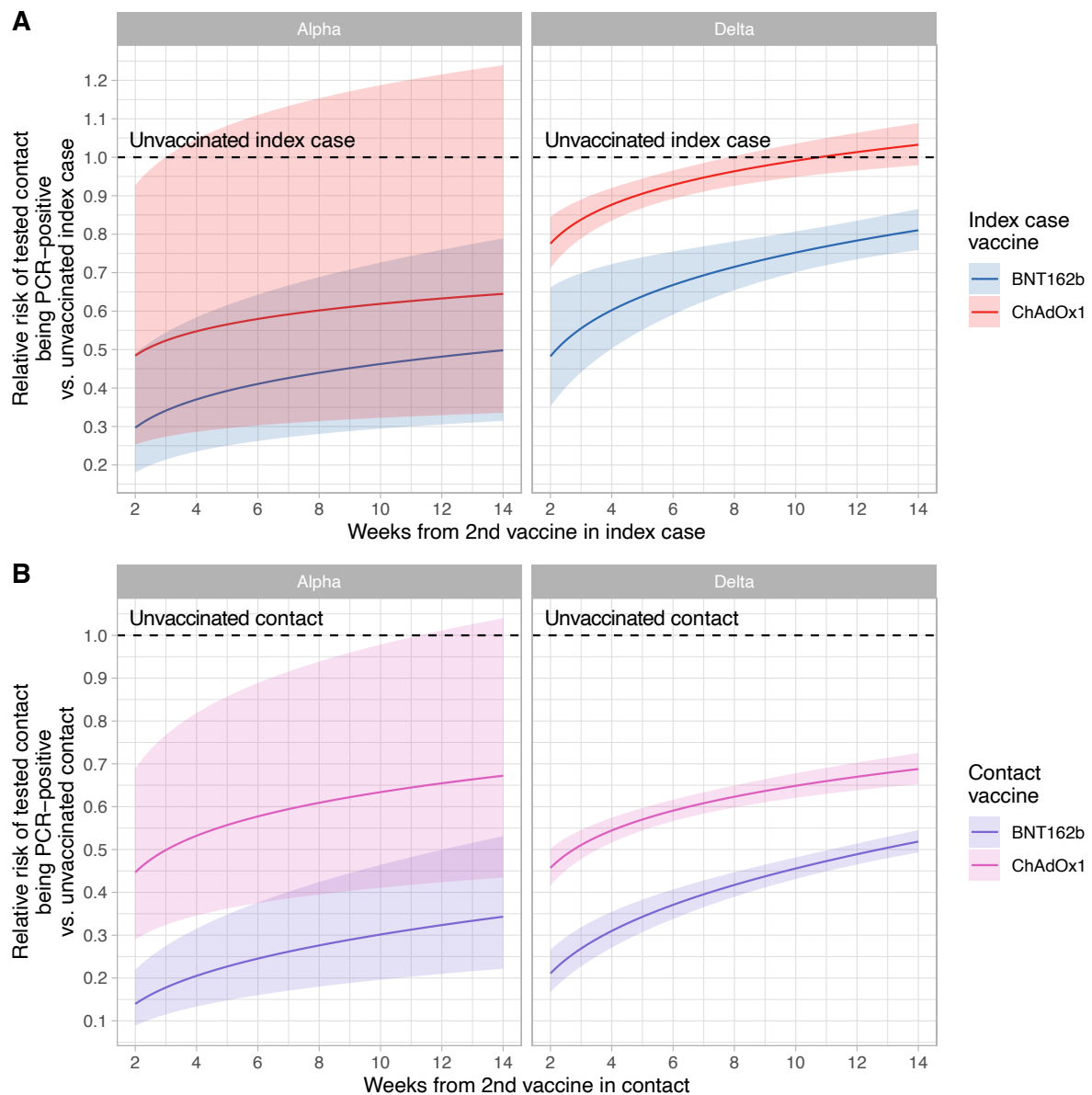


Figure S7. Sensitivity analysis: Rate ratios for positive PCR tests in contacts by time since second vaccination in index cases (panel A) and in contacts (panel B), variant, and vaccine type (restricting to contacts tested 2 to 7 days inclusive after an index case). Panel A compares the rate of positive PCR results in test contacts, comparing index case vaccination status to an unvaccinated index case. Panel B compares the rate of positive PCR results in test contacts, comparing contact vaccination status to an unvaccinated contact. The shaded area indicates the 95% confidence interval.

References

- 1 Public Health England. Guidance for contacts of people with confirmed coronavirus (COVID-19) infection who do not live with the person. <https://www.gov.uk/government/publications/guidance-for-contacts-of-people-with-possible-or-confirmed-coronavirus-covid-19-infection-who-do-not-live-with-the-person/guidance-for-contacts-of-people-with-possible-or-confirmed-coronavirus-covid-19-infection-who-do-not-live-with-the-person> (accessed Jan 20, 2021).
- 2 Public Health England. SARS-CoV-2 variants of concern and variants under investigation in England: Technical briefing 21. 2021; published online Aug 20. https://assets.publishing.service.gov.uk/government/uploads/system/uploads/attachment_data/file/1012644/Technical_Briefing_21.pdf (accessed Sept 2, 2021).
- 3 Chen W, Qian L, Shi J, Franklin M. Comparing performance between log-binomial and robust Poisson regression models for estimating risk ratios under model misspecification. *Bmc Med Res Methodol* 2018; 18: 63.
- 4 Chen W, Shi J, Qian L, Azen SP. Comparison of robustness to outliers between robust poisson models and log-binomial models when estimating relative risks for common binary outcomes: a simulation study. *Bmc Med Res Methodol* 2014; 14: 82–82.
- 5 Public Health England. Understanding cycle threshold (Ct) in SARS-CoV-2 RT-PCR. 2020; published online Oct 1. https://assets.publishing.service.gov.uk/government/uploads/system/uploads/attachment_data/file/926410/Understanding_Cycle_Threshold__Ct__in_SARS-CoV-2_RT-PCR_.pdf (accessed Sept 27, 2021).
- 6 Lee LYW, Rozmanowski S, Pang M, *et al.* SARS-CoV-2 infectivity by viral load, S gene variants and demographic factors and the utility of lateral flow devices to prevent transmission. *Clin Infect Dis* 2021; ciab421.
- 7 Griffin J, Casey M, Collins Á, *et al.* Rapid review of available evidence on the serial interval and generation time of COVID-19. *Bmj Open* 2020; 10: e040263.