

This page is intentionally left blank

Predictive value of circulating NMR metabolic biomarkers for type 2 diabetes risk in the UK Biobank study

Supplementary Appendix, Table of Contents

Webtable 1	Distribution of metabolic biomarkers and their associations with incident type 2 diabetes	Page 2
Webtable 2	Diagnosis and medication codes for assessment of type 2 diabetes status in primary and secondary healthcare and death registry records and UK Biobank verbal interview	Page 8
Webtable 3	Baseline characteristics of UK Biobank participants with and without NMR-metabolomics profiling	Page 10
Webtable 4	Associations of the first 11 metabolic biomarker principal components with risk of incident type 2 diabetes	Page 11
Webtable 5	Regression models for risk of incident type 2 diabetes	Page 12
Webtable 6	Performance of risk prediction models for incident type 2 diabetes among participants taking lipid-lowering medication at recruitment	Page 13
Webfigure 1	Participant exclusions to derive analysis population	Page 14
Webfigure 2	Cross-correlations of metabolic biomarkers	Page 15
Webfigure 3	Associations of metabolic biomarkers with risk of incident type 2 diabetes	Page 16
Webfigure 4	Associations of metabolic biomarkers with risk of incident type 2 diabetes by sex	Page 23
Webfigure 5	Associations of metabolic biomarkers with risk of incident type 2 diabetes by age	Page 24
Webfigure 6	Associations of metabolic biomarkers with risk of incident type 2 diabetes excluding the first three years of follow-up	Page 25
Webfigure 7	Importance of the first 20 metabolic biomarker principal components	Page 26
Webfigure 8	Characterisation of the first 11 metabolic biomarker principal components	Page 27
Webfigure 9	Comparison of biomarkers measured by NMR and routine clinical biochemistry assays	Page 29

Webtable 1. Distribution of metabolic biomarkers and their associations with incident type 2 diabetes

Metabolic biomarker	Mean (SD)	Hazard ratio (95% CI) per 1-SD higher level on the natural log scale							
		Standard model*		Standard model + HbA1c		Full model †		Standard model excluding first 3 years of follow-up	
		HR (95% CI) §	p-value	HR (95% CI) §	p-value	HR (95% CI) §	p-value	HR (95% CI) §	p-value
Lipoprotein particle concentrations									
Chylomicrons and extremely large VLDL particles	1.7 ⁻⁰⁶ (1.5 ⁻⁰⁶) mmol/L	1.50 (1.42, 1.58)	7.2 ⁻²⁴	1.35 (1.27, 1.42)	3.6 ⁻¹⁴	1.32 (1.22, 1.41)	2.2 ⁻⁰⁸	1.46 (1.38, 1.54)	2.9 ⁻¹⁸
Very large VLDL particles	3.5 ⁻⁰⁶ (2.3 ⁻⁰⁶) mmol/L	1.52 (1.44, 1.59)	2.6 ⁻²⁷	1.34 (1.27, 1.41)	2.1 ⁻¹⁴	1.30 (1.21, 1.39)	4.4 ⁻⁰⁸	1.47 (1.39, 1.55)	1.5 ⁻²⁰
Large VLDL particles	1.0 ⁻⁰⁵ (5.5 ⁻⁰⁶) mmol/L	1.41 (1.35, 1.47)	4.8 ⁻²⁵	1.26 (1.20, 1.33)	1.8 ⁻¹²	1.24 (1.16, 1.31)	3.4 ⁻⁰⁷	1.38 (1.31, 1.45)	4.5 ⁻¹⁹
Medium VLDL particles	3.4 ⁻⁰⁵ (1.2 ⁻⁰⁵) mmol/L	1.12 (1.07, 1.18)	7.4 ⁻⁰⁵	1.03 (0.98, 1.09)	2.7 ⁻⁰¹	1.03 (0.97, 1.10)	4.1 ⁻⁰¹	1.11 (1.06, 1.17)	5.7 ⁻⁰⁴
Small VLDL particles	3.9 ⁻⁰⁵ (1.3 ⁻⁰⁵) mmol/L	1.27 (1.22, 1.33)	4.9 ⁻¹⁷	1.15 (1.10, 1.21)	9.2 ⁻⁰⁷	1.15 (1.09, 1.22)	1.0 ⁻⁰⁴	1.26 (1.20, 1.32)	1.9 ⁻¹³
Very small VLDL particles	5.5 ⁻⁰⁵ (1.4 ⁻⁰⁵) mmol/L	1.16 (1.11, 1.21)	3.1 ⁻⁰⁸	1.06 (1.01, 1.11)	3.4 ⁻⁰²	1.09 (1.03, 1.16)	9.4 ⁻⁰³	1.16 (1.10, 1.21)	6.0 ⁻⁰⁷
IDL particles	3.1 ⁻⁰⁴ (7.6 ⁻⁰⁵) mmol/L	0.97 (0.93, 1.02)	3.3 ⁻⁰¹	0.92 (0.87, 0.97)	1.5 ⁻⁰³	0.94 (0.88, 1.00)	8.2 ⁻⁰²	0.98 (0.93, 1.03)	4.6 ⁻⁰¹
Large LDL particles	7.3 ⁻⁰⁴ (1.7 ⁻⁰⁴) mmol/L	0.99 (0.94, 1.04)	8.1 ⁻⁰¹	0.94 (0.89, 0.99)	1.4 ⁻⁰²	0.95 (0.89, 1.01)	1.2 ⁻⁰¹	1.00 (0.95, 1.05)	9.6 ⁻⁰¹
Medium LDL particles	2.9 ⁻⁰⁴ (7.5 ⁻⁰⁵) mmol/L	1.06 (1.01, 1.11)	4.2 ⁻⁰²	0.98 (0.93, 1.03)	4.4 ⁻⁰¹	0.99 (0.93, 1.05)	7.8 ⁻⁰¹	1.06 (1.01, 1.12)	4.3 ⁻⁰²
Small LDL particles	1.7 ⁻⁰⁴ (3.7 ⁻⁰⁵) mmol/L	1.11 (1.06, 1.16)	1.1 ⁻⁰⁴	1.02 (0.97, 1.07)	5.8 ⁻⁰¹	1.02 (0.96, 1.09)	5.4 ⁻⁰¹	1.11 (1.06, 1.17)	3.5 ⁻⁰⁴
Very large HDL particles	2.3 ⁻⁰⁴ (9.5 ⁻⁰⁵) mmol/L	0.86 (0.80, 0.92)	3.8 ⁻⁰⁶	0.87 (0.80, 0.93)	1.4 ⁻⁰⁵	0.92 (0.85, 1.00)	6.7 ⁻⁰²	0.87 (0.80, 0.93)	4.5 ⁻⁰⁵
Large HDL particles	1.4 ⁻⁰³ (7.6 ⁻⁰⁴) mmol/L	0.79 (0.74, 0.85)	6.7 ⁻¹⁷	0.83 (0.78, 0.89)	2.4 ⁻¹⁰	0.87 (0.80, 0.94)	4.1 ⁻⁰⁴	0.79 (0.74, 0.85)	1.3 ⁻¹⁴
Medium HDL particles	3.8 ⁻⁰³ (9.2 ⁻⁰⁴) mmol/L	0.91 (0.85, 0.96)	7.5 ⁻⁰⁴	0.94 (0.88, 1.00)	3.9 ⁻⁰²	0.98 (0.91, 1.04)	5.4 ⁻⁰¹	0.90 (0.84, 0.95)	4.3 ⁻⁰⁴
Small HDL particles	9.6 ⁻⁰³ (1.3 ⁻⁰³) mmol/L	0.99 (0.94, 1.04)	7.0 ⁻⁰¹	0.97 (0.92, 1.02)	3.2 ⁻⁰¹	0.97 (0.91, 1.04)	4.5 ⁻⁰¹	0.98 (0.92, 1.04)	5.1 ⁻⁰¹
Cholesterol concentrations									
Chylomicrons and extremely large VLDL particles	0.06 (0.04) mmol/L	1.43 (1.36, 1.50)	6.2 ⁻²³	1.30 (1.23, 1.37)	4.1 ⁻¹³	1.26 (1.18, 1.35)	2.2 ⁻⁰⁷	1.40 (1.33, 1.48)	1.0 ⁻¹⁷
Very large VLDL particles	0.05 (0.03) mmol/L	1.38 (1.31, 1.45)	2.6 ⁻¹⁸	1.23 (1.16, 1.30)	1.8 ⁻⁰⁸	1.20 (1.11, 1.28)	1.1 ⁻⁰⁴	1.35 (1.27, 1.43)	4.4 ⁻¹⁴
Large VLDL particles	0.10 (0.05) mmol/L	1.33 (1.26, 1.40)	3.0 ⁻¹⁶	1.20 (1.13, 1.26)	2.8 ⁻⁰⁷	1.17 (1.09, 1.25)	3.9 ⁻⁰⁴	1.31 (1.24, 1.38)	1.6 ⁻¹²
Medium VLDL particles	0.17 (0.07) mmol/L	0.95 (0.90, 1.00)	3.7 ⁻⁰²	0.90 (0.86, 0.95)	6.9 ⁻⁰⁵	0.92 (0.86, 0.98)	7.5 ⁻⁰³	0.95 (0.90, 1.00)	7.6 ⁻⁰²
Small VLDL particles	0.16 (0.05) mmol/L	1.11 (1.06, 1.17)	2.4 ⁻⁰⁴	1.02 (0.97, 1.08)	4.6 ⁻⁰¹	1.03 (0.96, 1.10)	4.4 ⁻⁰¹	1.11 (1.05, 1.17)	8.3 ⁻⁰⁴
Very small VLDL particles	0.18 (0.05) mmol/L	1.01 (0.96, 1.07)	5.9 ⁻⁰¹	0.95 (0.90, 1.01)	9.8 ⁻⁰²	0.99 (0.93, 1.05)	7.9 ⁻⁰¹	1.02 (0.96, 1.07)	5.5 ⁻⁰¹
IDL particles	0.83 (0.21) mmol/L	0.90 (0.85, 0.95)	2.4 ⁻⁰⁵	0.87 (0.82, 0.92)	1.7 ⁻⁰⁸	0.90 (0.84, 0.96)	7.1 ⁻⁰⁴	0.90 (0.85, 0.96)	2.9 ⁻⁰⁴
Large LDL particles	1.11 (0.28) mmol/L	0.95 (0.90, 1.00)	3.5 ⁻⁰²	0.90 (0.86, 0.95)	6.1 ⁻⁰⁵	0.93 (0.87, 0.98)	1.5 ⁻⁰²	0.95 (0.90, 1.01)	8.6 ⁻⁰²
Medium LDL particles	0.42 (0.12) mmol/L	1.03 (0.98, 1.08)	3.3 ⁻⁰¹	0.96 (0.91, 1.01)	1.2 ⁻⁰¹	0.97 (0.91, 1.03)	3.8 ⁻⁰¹	1.03 (0.98, 1.09)	3.1 ⁻⁰¹
Small LDL particles	0.18 (0.04) mmol/L	1.02 (0.97, 1.07)	3.8 ⁻⁰¹	0.95 (0.90, 1.00)	8.8 ⁻⁰²	0.96 (0.90, 1.02)	3.0 ⁻⁰¹	1.03 (0.97, 1.08)	3.4 ⁻⁰¹
Very large HDL particles	0.08 (0.03) mmol/L	0.79 (0.73, 0.84)	4.6 ⁻¹⁶	0.80 (0.74, 0.86)	9.3 ⁻¹³	0.84 (0.77, 0.91)	1.5 ⁻⁰⁵	0.79 (0.73, 0.86)	1.6 ⁻¹²

Webtable 1. Distribution of metabolic biomarkers and their associations with incident type 2 diabetes

Metabolic biomarker	Mean (SD)	Hazard ratio (95% CI) per 1-SD higher level on the natural log scale								
		Standard model*		Standard model + HbA1c		Full model †		Standard model excluding first 3 years of follow-up		
		HR (95% CI) §	p-value	HR (95% CI) §	p-value	HR (95% CI) §	p-value	HR (95% CI) §	p-value	
Large HDL particles	0.29 (0.17) mmol/L	0.78 (0.74, 0.83)	6.4 ⁻²⁸	0.82 (0.77, 0.87)	2.6 ⁻¹⁶	0.85 (0.79, 0.91)	5.5 ⁻⁰⁷	0.79 (0.74, 0.84)	4.5 ⁻²³	
Medium HDL particles	0.49 (0.12) mmol/L	0.84 (0.79, 0.90)	2.2 ⁻⁰⁹	0.89 (0.83, 0.94)	3.6 ⁻⁰⁵	0.92 (0.85, 0.98)	2.1 ⁻⁰²	0.84 (0.78, 0.90)	7.8 ⁻⁰⁹	
Small HDL particles	0.44 (0.06) mmol/L	0.95 (0.90, 1.00)	6.4 ⁻⁰²	0.94 (0.89, 0.99)	3.2 ⁻⁰²	0.94 (0.88, 1.01)	1.1 ⁻⁰¹	0.94 (0.89, 1.00)	5.7 ⁻⁰²	
Free cholesterol concentrations										
Chylomicrons and extremely large VLDL particles	0.03 (0.02) mmol/L	1.46 (1.39, 1.53)	1.3 ⁻²⁵	1.33 (1.26, 1.40)	2.5 ⁻¹⁵	1.30 (1.21, 1.38)	6.1 ⁻⁰⁹	1.43 (1.35, 1.50)	1.1 ⁻¹⁹	
Very large VLDL particles	0.02 (0.01) mmol/L	1.44 (1.37, 1.51)	7.3 ⁻²³	1.28 (1.21, 1.35)	1.2 ⁻¹¹	1.24 (1.16, 1.33)	1.8 ⁻⁰⁶	1.40 (1.33, 1.48)	2.6 ⁻¹⁷	
Large VLDL particles	0.05 (0.02) mmol/L	1.42 (1.35, 1.49)	2.0 ⁻²²	1.26 (1.19, 1.33)	7.3 ⁻¹¹	1.23 (1.14, 1.31)	5.0 ⁻⁰⁶	1.39 (1.31, 1.46)	3.8 ⁻¹⁷	
Medium VLDL particles	0.08 (0.03) mmol/L	1.06 (1.00, 1.11)	4.6 ⁻⁰²	0.99 (0.93, 1.04)	6.1 ⁻⁰¹	0.99 (0.93, 1.06)	8.3 ⁻⁰¹	1.06 (1.00, 1.11)	8.2 ⁻⁰²	
Small VLDL particles	0.06 (0.02) mmol/L	1.05 (1.00, 1.10)	6.9 ⁻⁰²	0.98 (0.92, 1.03)	4.2 ⁻⁰¹	0.99 (0.92, 1.05)	7.7 ⁻⁰¹	1.05 (1.00, 1.11)	9.5 ⁻⁰²	
Very small VLDL particles	0.06 (0.01) mmol/L	1.11 (1.06, 1.17)	7.4 ⁻⁰⁵	1.03 (0.98, 1.08)	3.5 ⁻⁰¹	1.06 (0.99, 1.12)	1.1 ⁻⁰¹	1.11 (1.06, 1.17)	3.4 ⁻⁰⁴	
IDL particles	0.22 (0.06) mmol/L	0.89 (0.85, 0.94)	9.1 ⁻⁰⁶	0.86 (0.81, 0.91)	1.1 ⁻⁰⁹	0.89 (0.83, 0.95)	1.5 ⁻⁰⁴	0.90 (0.85, 0.96)	2.7 ⁻⁰⁴	
Large LDL particles	0.29 (0.08) mmol/L	0.88 (0.84, 0.93)	3.5 ⁻⁰⁷	0.86 (0.82, 0.91)	3.3 ⁻¹⁰	0.88 (0.83, 0.94)	4.2 ⁻⁰⁵	0.89 (0.84, 0.94)	2.0 ⁻⁰⁵	
Medium LDL particles	0.12 (0.03) mmol/L	0.93 (0.88, 0.97)	2.3 ⁻⁰³	0.89 (0.84, 0.93)	9.6 ⁻⁰⁷	0.90 (0.85, 0.96)	9.8 ⁻⁰⁴	0.94 (0.89, 0.99)	1.6 ⁻⁰²	
Small LDL particles	0.05 (0.01) mmol/L	0.93 (0.89, 0.97)	3.6 ⁻⁰⁴	0.89 (0.85, 0.93)	7.7 ⁻⁰⁸	0.91 (0.86, 0.96)	4.8 ⁻⁰⁴	0.94 (0.89, 0.98)	5.0 ⁻⁰³	
Very large HDL particles	0.02 (0.01) mmol/L	0.88 (0.82, 0.93)	1.6 ⁻⁰⁵	0.87 (0.81, 0.93)	1.3 ⁻⁰⁵	0.91 (0.84, 0.98)	2.2 ⁻⁰²	0.89 (0.82, 0.95)	4.0 ⁻⁰⁴	
Large HDL particles	0.07 (0.04) mmol/L	0.87 (0.82, 0.91)	2.5 ⁻⁰⁹	0.89 (0.84, 0.93)	2.3 ⁻⁰⁶	0.92 (0.86, 0.99)	3.4 ⁻⁰²	0.87 (0.82, 0.92)	4.0 ⁻⁰⁸	
Medium HDL particles	0.09 (0.02) mmol/L	0.92 (0.86, 0.97)	2.9 ⁻⁰³	0.94 (0.88, 0.99)	3.1 ⁻⁰²	0.98 (0.91, 1.05)	6.1 ⁻⁰¹	0.91 (0.85, 0.97)	1.9 ⁻⁰³	
Small HDL particles	0.11 (0.02) mmol/L	1.09 (1.04, 1.14)	8.9 ⁻⁰⁴	1.05 (0.99, 1.10)	1.1 ⁻⁰¹	1.07 (1.01, 1.13)	4.7 ⁻⁰²	1.08 (1.02, 1.13)	1.0 ⁻⁰²	
Esterified cholesterol concentrations										
Chylomicrons and extremely large VLDL particles	0.03 (0.02) mmol/L	1.40 (1.33, 1.47)	9.0 ⁻²⁰	1.27 (1.20, 1.34)	7.3 ⁻¹¹	1.23 (1.15, 1.32)	5.7 ⁻⁰⁶	1.37 (1.30, 1.45)	2.5 ⁻¹⁵	
Very large VLDL particles	0.03 (0.01) mmol/L	1.30 (1.23, 1.37)	1.3 ⁻¹²	1.16 (1.09, 1.23)	4.2 ⁻⁰⁵	1.13 (1.05, 1.22)	7.4 ⁻⁰³	1.28 (1.20, 1.36)	6.9 ⁻¹⁰	
Large VLDL particles	0.05 (0.02) mmol/L	1.24 (1.17, 1.30)	5.9 ⁻¹⁰	1.13 (1.06, 1.19)	5.5 ⁻⁰⁴	1.11 (1.03, 1.19)	2.0 ⁻⁰²	1.22 (1.15, 1.29)	8.7 ⁻⁰⁸	
Medium VLDL particles	0.09 (0.04) mmol/L	0.90 (0.87, 0.93)	1.7 ⁻¹⁰	0.88 (0.85, 0.91)	5.5 ⁻¹⁴	0.90 (0.85, 0.94)	1.6 ⁻⁰⁶	0.90 (0.87, 0.94)	1.3 ⁻⁰⁸	
Small VLDL particles	0.10 (0.03) mmol/L	1.15 (1.09, 1.21)	3.4 ⁻⁰⁶	1.05 (1.00, 1.11)	1.1 ⁻⁰¹	1.06 (0.99, 1.13)	1.5 ⁻⁰¹	1.15 (1.09, 1.21)	2.5 ⁻⁰⁵	
Very small VLDL particles	0.13 (0.04) mmol/L	0.97 (0.92, 1.02)	3.1 ⁻⁰¹	0.93 (0.88, 0.98)	3.6 ⁻⁰³	0.96 (0.90, 1.02)	2.6 ⁻⁰¹	0.98 (0.92, 1.03)	4.4 ⁻⁰¹	
IDL particles	0.61 (0.16) mmol/L	0.90 (0.85, 0.95)	3.9 ⁻⁰⁵	0.87 (0.83, 0.92)	5.4 ⁻⁰⁸	0.90 (0.85, 0.96)	1.3 ⁻⁰³	0.91 (0.85, 0.96)	3.4 ⁻⁰⁴	
Large LDL particles	0.82 (0.21) mmol/L	0.97 (0.92, 1.02)	2.8 ⁻⁰¹	0.92 (0.87, 0.97)	1.5 ⁻⁰³	0.94 (0.88, 1.00)	6.9 ⁻⁰²	0.98 (0.92, 1.03)	4.2 ⁻⁰¹	

Webtable 1. Distribution of metabolic biomarkers and their associations with incident type 2 diabetes

Metabolic biomarker	Mean (SD)	Hazard ratio (95% CI) per 1-SD higher level on the natural log scale								
		Standard model*		Standard model + HbA1c		Full model †		Standard model excluding first 3 years of follow-up		
		HR (95% CI) §	p-value	HR (95% CI) §	p-value	HR (95% CI) §	p-value	HR (95% CI) §	p-value	
Medium LDL particles	0.30 (0.09) mmol/L	1.07 (1.02, 1.12)	2.0 ⁻⁰²	0.99 (0.94, 1.04)	6.8 ⁻⁰¹	1.00 (0.93, 1.06)	9.2 ⁻⁰¹	1.07 (1.01, 1.13)	2.8 ⁻⁰²	
Small LDL particles	0.13 (0.03) mmol/L	1.07 (1.02, 1.12)	1.5 ⁻⁰²	0.99 (0.94, 1.04)	7.2 ⁻⁰¹	1.00 (0.93, 1.06)	9.2 ⁻⁰¹	1.07 (1.02, 1.13)	2.0 ⁻⁰²	
Very large HDL particles	0.06 (0.03) mmol/L	0.86 (0.83, 0.89)	4.8 ⁻²³	0.87 (0.83, 0.90)	7.4 ⁻¹⁸	0.86 (0.81, 0.91)	7.6 ⁻⁰⁸	0.86 (0.83, 0.89)	1.7 ⁻¹⁸	
Large HDL particles	0.23 (0.13) mmol/L	0.77 (0.73, 0.81)	3.8 ⁻³⁵	0.81 (0.76, 0.85)	7.1 ⁻²⁰	0.83 (0.77, 0.89)	6.1 ⁻⁰⁹	0.77 (0.73, 0.82)	8.2 ⁻²⁹	
Medium HDL particles	0.40 (0.10) mmol/L	0.83 (0.77, 0.88)	2.3 ⁻¹¹	0.87 (0.82, 0.93)	4.5 ⁻⁰⁶	0.90 (0.84, 0.97)	6.2 ⁻⁰³	0.82 (0.76, 0.88)	1.7 ⁻¹⁰	
Small HDL particles	0.33 (0.05) mmol/L	0.91 (0.86, 0.96)	3.0 ⁻⁰⁴	0.91 (0.86, 0.96)	5.5 ⁻⁰⁴	0.91 (0.84, 0.97)	4.6 ⁻⁰³	0.91 (0.85, 0.96)	6.2 ⁻⁰⁴	
Triglyceride concentrations										
Chylomicrons and extremely large VLDL particles	0.14 (0.13) mmol/L	1.46 (1.37, 1.55)	2.1 ⁻¹⁶	1.30 (1.22, 1.38)	1.4 ⁻⁰⁹	1.24 (1.15, 1.34)	3.1 ⁻⁰⁵	1.44 (1.34, 1.53)	3.7 ⁻¹³	
Very large VLDL particles	0.11 (0.08) mmol/L	1.54 (1.46, 1.61)	2.3 ⁻²⁸	1.35 (1.28, 1.43)	4.9 ⁻¹⁵	1.30 (1.22, 1.39)	2.9 ⁻⁰⁸	1.48 (1.40, 1.56)	5.8 ⁻²¹	
Large VLDL particles	0.16 (0.09) mmol/L	1.37 (1.31, 1.43)	3.8 ⁻²⁴	1.24 (1.18, 1.30)	6.9 ⁻¹²	1.21 (1.14, 1.28)	8.3 ⁻⁰⁷	1.34 (1.27, 1.40)	5.1 ⁻¹⁸	
Medium VLDL particles	0.27 (0.11) mmol/L	1.32 (1.26, 1.38)	3.9 ⁻²¹	1.20 (1.14, 1.26)	7.1 ⁻¹⁰	1.18 (1.11, 1.25)	5.4 ⁻⁰⁶	1.30 (1.23, 1.36)	5.1 ⁻¹⁶	
Small VLDL particles	0.16 (0.06) mmol/L	1.40 (1.34, 1.45)	2.3 ⁻³¹	1.27 (1.21, 1.32)	2.3 ⁻¹⁶	1.26 (1.19, 1.32)	2.3 ⁻¹⁰	1.37 (1.31, 1.43)	7.7 ⁻²⁴	
Very small VLDL particles	0.07 (0.02) mmol/L	1.40 (1.35, 1.45)	8.9 ⁻³⁸	1.27 (1.22, 1.32)	1.4 ⁻¹⁹	1.28 (1.22, 1.34)	2.4 ⁻¹⁴	1.38 (1.32, 1.43)	2.1 ⁻²⁹	
IDL particles	0.10 (0.03) mmol/L	1.37 (1.32, 1.42)	3.8 ⁻³⁷	1.25 (1.20, 1.30)	2.9 ⁻¹⁸	1.27 (1.21, 1.32)	2.7 ⁻¹⁴	1.36 (1.30, 1.41)	2.1 ⁻²⁹	
Large LDL particles	0.10 (0.03) mmol/L	1.39 (1.34, 1.43)	3.2 ⁻⁴⁰	1.25 (1.20, 1.30)	5.4 ⁻¹⁹	1.27 (1.21, 1.32)	2.4 ⁻¹⁴	1.37 (1.32, 1.42)	7.9 ⁻³²	
Medium LDL particles	0.03 (0.01) mmol/L	1.40 (1.35, 1.45)	2.0 ⁻⁴²	1.26 (1.22, 1.31)	1.6 ⁻²⁰	1.27 (1.21, 1.32)	2.4 ⁻¹⁴	1.38 (1.33, 1.43)	2.5 ⁻³³	
Small LDL particles	0.02 (0.01) mmol/L	1.40 (1.35, 1.45)	1.3 ⁻⁴⁰	1.27 (1.22, 1.32)	1.6 ⁻²⁰	1.26 (1.20, 1.32)	2.1 ⁻¹³	1.38 (1.32, 1.43)	3.0 ⁻³¹	
Very large HDL particles	7.1 ⁻⁰³ (2.7 ⁻⁰³) mmol/L	1.29 (1.24, 1.34)	2.7 ⁻²⁴	1.20 (1.15, 1.25)	3.2 ⁻¹³	1.22 (1.16, 1.27)	1.5 ⁻¹⁰	1.27 (1.21, 1.32)	2.2 ⁻¹⁸	
Large HDL particles	0.03 (0.01) mmol/L	1.20 (1.15, 1.25)	1.7 ⁻¹²	1.17 (1.12, 1.22)	2.6 ⁻⁰⁹	1.20 (1.14, 1.26)	1.3 ⁻⁰⁸	1.18 (1.13, 1.24)	3.5 ⁻⁰⁹	
Medium HDL particles	0.05 (0.02) mmol/L	1.34 (1.29, 1.39)	6.2 ⁻²⁷	1.27 (1.22, 1.32)	4.8 ⁻¹⁸	1.27 (1.21, 1.34)	9.1 ⁻¹³	1.31 (1.25, 1.37)	8.6 ⁻²⁰	
Small HDL particles	0.05 (0.02) mmol/L	1.51 (1.46, 1.57)	4.3 ⁻⁴²	1.37 (1.31, 1.43)	1.6 ⁻²⁴	1.35 (1.28, 1.42)	3.1 ⁻¹⁵	1.48 (1.41, 1.54)	8.6 ⁻³²	
Phospholipid concentrations										
Chylomicrons and extremely large VLDL particles	0.04 (0.03) mmol/L	1.54 (1.45, 1.64)	1.9 ⁻¹⁸	1.37 (1.28, 1.46)	2.1 ⁻¹¹	1.33 (1.22, 1.44)	1.0 ⁻⁰⁶	1.48 (1.38, 1.58)	9.3 ⁻¹⁴	
Very large VLDL particles	0.04 (0.03) mmol/L	1.58 (1.49, 1.68)	1.6 ⁻²⁰	1.36 (1.27, 1.45)	1.5 ⁻¹⁰	1.30 (1.19, 1.41)	1.4 ⁻⁰⁵	1.52 (1.41, 1.62)	5.1 ⁻¹⁵	
Large VLDL particles	0.07 (0.04) mmol/L	1.60 (1.50, 1.70)	8.1 ⁻²⁰	1.36 (1.27, 1.46)	7.6 ⁻¹⁰	1.30 (1.18, 1.41)	4.2 ⁻⁰⁵	1.53 (1.42, 1.64)	2.1 ⁻¹⁴	
Medium VLDL particles	0.13 (0.05) mmol/L	1.12 (1.06, 1.17)	1.1 ⁻⁰⁴	1.03 (0.98, 1.09)	3.1 ⁻⁰¹	1.03 (0.97, 1.10)	4.0 ⁻⁰¹	1.11 (1.05, 1.17)	8.6 ⁻⁰⁴	
Small VLDL particles	0.10 (0.03) mmol/L	1.15 (1.09, 1.20)	1.6 ⁻⁰⁶	1.05 (0.99, 1.10)	1.1 ⁻⁰¹	1.06 (0.99, 1.12)	1.6 ⁻⁰¹	1.14 (1.08, 1.20)	2.1 ⁻⁰⁵	

Webtable 1. Distribution of metabolic biomarkers and their associations with incident type 2 diabetes

Metabolic biomarker	Mean (SD)	Hazard ratio (95% CI) per 1-SD higher level on the natural log scale								
		Standard model*		Standard model + HbA1c		Full model †		Standard model excluding first 3 years of follow-up		
		HR (95% CI) §	p-value	HR (95% CI) §	p-value	HR (95% CI) §	p-value	HR (95% CI) §	p-value	
Very small VLDL particles	0.10 (0.03) mmol/L	1.19 (1.14, 1.25)	4.3 ⁻¹¹	1.09 (1.04, 1.14)	1.3 ⁻⁰³	1.12 (1.06, 1.18)	7.7 ⁻⁰⁴	1.19 (1.13, 1.24)	3.2 ⁻⁰⁹	
IDL particles	0.29 (0.07) mmol/L	0.96 (0.91, 1.01)	1.0 ⁻⁰¹	0.91 (0.86, 0.96)	2.8 ⁻⁰⁴	0.94 (0.88, 1.00)	7.8 ⁻⁰²	0.96 (0.91, 1.02)	2.1 ⁻⁰¹	
Large LDL particles	0.35 (0.08) mmol/L	0.95 (0.90, 1.00)	5.5 ⁻⁰²	0.90 (0.85, 0.95)	6.7 ⁻⁰⁵	0.92 (0.86, 0.98)	1.3 ⁻⁰²	0.96 (0.90, 1.01)	1.3 ⁻⁰¹	
Medium LDL particles	0.16 (0.04) mmol/L	1.04 (0.99, 1.10)	1.1 ⁻⁰¹	0.97 (0.92, 1.02)	2.5 ⁻⁰¹	0.98 (0.91, 1.04)	5.4 ⁻⁰¹	1.05 (0.99, 1.10)	1.2 ⁻⁰¹	
Small LDL particles	0.09 (0.02) mmol/L	1.05 (1.01, 1.10)	4.2 ⁻⁰²	0.98 (0.93, 1.02)	3.6 ⁻⁰¹	0.99 (0.93, 1.05)	8.4 ⁻⁰¹	1.06 (1.01, 1.11)	4.2 ⁻⁰²	
Very large HDL particles	0.08 (0.04) mmol/L	0.91 (0.87, 0.95)	8.8 ⁻⁰⁶	0.92 (0.88, 0.96)	2.6 ⁻⁰⁴	0.94 (0.88, 1.00)	7.0 ⁻⁰²	0.91 (0.87, 0.96)	6.5 ⁻⁰⁵	
Large HDL particles	0.32 (0.15) mmol/L	0.89 (0.85, 0.93)	7.5 ⁻⁰⁹	0.90 (0.85, 0.95)	4.4 ⁻⁰⁵	0.94 (0.87, 1.01)	1.0 ⁻⁰¹	0.89 (0.84, 0.93)	6.1 ⁻⁰⁸	
Medium HDL particles	0.48 (0.10) mmol/L	0.99 (0.94, 1.05)	8.1 ⁻⁰¹	1.01 (0.96, 1.06)	7.0 ⁻⁰¹	1.04 (0.98, 1.11)	2.4 ⁻⁰¹	0.98 (0.92, 1.03)	4.4 ⁻⁰¹	
Small HDL particles	0.65 (0.09) mmol/L	1.11 (1.06, 1.16)	1.6 ⁻⁰⁴	1.09 (1.03, 1.14)	2.9 ⁻⁰³	1.09 (1.03, 1.16)	9.4 ⁻⁰³	1.08 (1.03, 1.14)	5.5 ⁻⁰³	
Total lipid concentrations										
Chylomicrons and extremely large VLDL particles	0.23 (0.21) mmol/L	1.46 (1.39, 1.53)	1.3 ⁻²⁵	1.32 (1.25, 1.39)	9.3 ⁻¹⁵	1.28 (1.20, 1.36)	1.7 ⁻⁰⁸	1.42 (1.35, 1.50)	9.7 ⁻²⁰	
Very large VLDL particles	0.20 (0.13) mmol/L	1.49 (1.42, 1.56)	2.1 ⁻²⁷	1.32 (1.25, 1.39)	3.0 ⁻¹⁴	1.28 (1.20, 1.37)	5.1 ⁻⁰⁸	1.45 (1.37, 1.52)	1.3 ⁻²⁰	
Large VLDL particles	0.33 (0.17) mmol/L	1.39 (1.32, 1.45)	5.6 ⁻²³	1.24 (1.18, 1.31)	3.6 ⁻¹¹	1.22 (1.14, 1.29)	2.1 ⁻⁰⁶	1.35 (1.29, 1.42)	2.6 ⁻¹⁷	
Medium VLDL particles	0.57 (0.20) mmol/L	1.18 (1.13, 1.24)	7.7 ⁻⁰⁹	1.08 (1.03, 1.14)	7.8 ⁻⁰³	1.08 (1.01, 1.15)	4.5 ⁻⁰²	1.17 (1.11, 1.23)	6.5 ⁻⁰⁷	
Small VLDL particles	0.41 (0.13) mmol/L	1.27 (1.21, 1.33)	2.9 ⁻¹⁶	1.15 (1.09, 1.20)	3.6 ⁻⁰⁶	1.15 (1.08, 1.22)	2.1 ⁻⁰⁴	1.26 (1.19, 1.32)	8.1 ⁻¹³	
Very small VLDL particles	0.36 (0.09) mmol/L	1.17 (1.11, 1.22)	1.2 ⁻⁰⁸	1.07 (1.02, 1.12)	1.4 ⁻⁰²	1.10 (1.04, 1.17)	4.5 ⁻⁰³	1.16 (1.11, 1.22)	3.4 ⁻⁰⁷	
IDL particles	1.22 (0.29) mmol/L	0.95 (0.90, 1.00)	4.6 ⁻⁰²	0.90 (0.85, 0.95)	7.2 ⁻⁰⁵	0.93 (0.87, 0.99)	4.4 ⁻⁰²	0.95 (0.90, 1.01)	9.8 ⁻⁰²	
Large LDL particles	1.56 (0.37) mmol/L	0.98 (0.93, 1.02)	3.4 ⁻⁰¹	0.92 (0.87, 0.97)	1.8 ⁻⁰³	0.94 (0.88, 1.00)	8.1 ⁻⁰²	0.98 (0.93, 1.03)	4.9 ⁻⁰¹	
Medium LDL particles	0.61 (0.16) mmol/L	1.06 (1.01, 1.11)	4.1 ⁻⁰²	0.98 (0.93, 1.03)	4.6 ⁻⁰¹	0.99 (0.93, 1.05)	7.9 ⁻⁰¹	1.06 (1.00, 1.12)	4.9 ⁻⁰²	
Small LDL particles	0.28 (0.06) mmol/L	1.07 (1.02, 1.12)	1.3 ⁻⁰²	0.99 (0.94, 1.04)	6.1 ⁻⁰¹	1.00 (0.94, 1.06)	9.2 ⁻⁰¹	1.07 (1.02, 1.13)	1.8 ⁻⁰²	
Very large HDL particles	0.17 (0.08) mmol/L	0.84 (0.78, 0.89)	3.1 ⁻⁰⁹	0.85 (0.79, 0.91)	2.3 ⁻⁰⁷	0.89 (0.82, 0.97)	7.6 ⁻⁰³	0.84 (0.78, 0.90)	2.1 ⁻⁰⁷	
Large HDL particles	0.64 (0.32) mmol/L	0.80 (0.74, 0.85)	1.2 ⁻¹³	0.84 (0.78, 0.90)	3.2 ⁻⁰⁸	0.89 (0.81, 0.96)	4.3 ⁻⁰³	0.79 (0.73, 0.86)	6.8 ⁻¹²	
Medium HDL particles	1.02 (0.22) mmol/L	0.94 (0.89, 1.00)	4.6 ⁻⁰²	0.97 (0.92, 1.03)	3.3 ⁻⁰¹	1.01 (0.94, 1.07)	9.0 ⁻⁰¹	0.93 (0.87, 0.99)	2.0 ⁻⁰²	
Small HDL particles	1.15 (0.16) mmol/L	1.09 (1.04, 1.14)	1.5 ⁻⁰³	1.06 (1.01, 1.12)	3.1 ⁻⁰²	1.07 (1.01, 1.13)	6.5 ⁻⁰²	1.07 (1.02, 1.13)	2.0 ⁻⁰²	
Lipoprotein particle sizes										
VLDL particles	38.6 (1.3) nm	1.36 (1.30, 1.41)	3.1 ⁻²⁴	1.27 (1.21, 1.33)	3.0 ⁻¹⁵	1.21 (1.14, 1.28)	5.4 ⁻⁰⁷	1.32 (1.26, 1.39)	5.4 ⁻¹⁸	
LDL particles	23.9 (0.1) nm	0.82 (0.78, 0.87)	3.0 ⁻¹⁷	0.86 (0.81, 0.90)	3.9 ⁻¹¹	0.87 (0.82, 0.93)	1.8 ⁻⁰⁶	0.83 (0.78, 0.88)	7.2 ⁻¹⁴	
HDL particles	9.64 (0.21) nm	0.78 (0.71, 0.85)	2.7 ⁻¹¹	0.84 (0.77, 0.92)	6.7 ⁻⁰⁶	0.91 (0.82, 1.00)	4.8 ⁻⁰²	0.78 (0.70, 0.86)	8.5 ⁻¹⁰	

Webtable 1. Distribution of metabolic biomarkers and their associations with incident type 2 diabetes

Metabolic biomarker	Mean (SD)	Hazard ratio (95% CI) per 1-SD higher level on the natural log scale							
		Standard model*		Standard model + HbA1c		Full model †		Standard model excluding first 3 years of follow-up	
		HR (95% CI) §	p-value	HR (95% CI) §	p-value	HR (95% CI) §	p-value	HR (95% CI) §	p-value
Apolipoproteins									
Apolipoprotein A1	1.44 (0.24) g/L	0.91 (0.85, 0.97)	1.4 ⁻⁰³	0.93 (0.88, 0.99)	3.4 ⁻⁰²	0.98 (0.91, 1.05)	5.9 ⁻⁰¹	0.90 (0.84, 0.96)	8.7 ⁻⁰⁴
Apolipoprotein B	0.84 (0.20) g/L	1.04 (0.99, 1.09)	1.5 ⁻⁰¹	0.97 (0.92, 1.02)	2.1 ⁻⁰¹	0.98 (0.92, 1.04)	5.9 ⁻⁰¹	1.04 (0.99, 1.10)	1.5 ⁻⁰¹
Apolipoprotein B to Apolipoprotein A1 ratio	0.60 (0.17)	1.09 (1.04, 1.15)	2.3 ⁻⁰³	1.00 (0.95, 1.06)	9.4 ⁻⁰¹	0.99 (0.93, 1.06)	8.7 ⁻⁰¹	1.10 (1.04, 1.16)	1.9 ⁻⁰³
Fatty acids									
Polyunsaturated	4.98 (0.80) mmol/L	1.04 (0.99, 1.09)	1.6 ⁻⁰¹	0.98 (0.93, 1.03)	5.0 ⁻⁰¹	1.00 (0.94, 1.06)	9.2 ⁻⁰¹	1.04 (0.98, 1.09)	2.3 ⁻⁰¹
Monounsaturated	2.82 (0.82) mmol/L	1.33 (1.28, 1.38)	1.2 ⁻²⁸	1.23 (1.18, 1.28)	1.2 ⁻¹⁴	1.21 (1.15, 1.27)	2.6 ⁻⁰⁹	1.31 (1.26, 1.37)	4.7 ⁻²²
Saturated	4.04 (0.95) mmol/L	1.31 (1.27, 1.36)	1.2 ⁻²⁸	1.20 (1.15, 1.25)	1.8 ⁻¹³	1.21 (1.15, 1.26)	7.6 ⁻¹⁰	1.29 (1.24, 1.34)	9.6 ⁻²²
Docosahexaenoic acid	0.23 (0.08) mmol/L	0.90 (0.85, 0.94)	8.0 ⁻⁰⁶	0.91 (0.86, 0.96)	1.3 ⁻⁰⁴	0.93 (0.87, 0.99)	4.2 ⁻⁰²	0.90 (0.85, 0.95)	4.8 ⁻⁰⁵
Linoleic acid	3.41 (0.68) mmol/L	1.02 (0.97, 1.07)	3.9 ⁻⁰¹	0.96 (0.91, 1.01)	1.3 ⁻⁰¹	0.97 (0.91, 1.03)	3.8 ⁻⁰¹	1.02 (0.97, 1.08)	4.4 ⁻⁰¹
Omega-3	0.53 (0.22) mmol/L	1.03 (0.98, 1.08)	2.8 ⁻⁰¹	1.01 (0.96, 1.06)	7.0 ⁻⁰¹	1.04 (0.98, 1.10)	3.1 ⁻⁰¹	1.02 (0.97, 1.08)	4.4 ⁻⁰¹
Omega-6	4.45 (0.68) mmol/L	1.04 (0.99, 1.09)	1.7 ⁻⁰¹	0.98 (0.93, 1.03)	3.7 ⁻⁰¹	0.99 (0.92, 1.05)	6.9 ⁻⁰¹	1.04 (0.98, 1.09)	2.1 ⁻⁰¹
Total	11.8 (2.4) mmol/L	1.25 (1.20, 1.30)	7.9 ⁻¹⁹	1.15 (1.10, 1.20)	4.3 ⁻⁰⁸	1.15 (1.10, 1.21)	5.4 ⁻⁰⁶	1.23 (1.18, 1.29)	2.1 ⁻¹⁴
Polyunsaturated to total fatty acids ratio	42.5 (3.8) %	0.70 (0.66, 0.74)	7.4 ⁻⁶⁰	0.76 (0.71, 0.80)	9.3 ⁻³⁶	0.76 (0.71, 0.81)	1.0 ⁻²²	0.72 (0.67, 0.76)	3.3 ⁻⁴⁵
Monounsaturated to total fatty acids ratio	23.5 (2.7) %	1.42 (1.37, 1.48)	7.3 ⁻³⁶	1.33 (1.28, 1.39)	2.0 ⁻²³	1.30 (1.23, 1.37)	2.1 ⁻¹³	1.40 (1.34, 1.46)	3.4 ⁻²⁸
Saturated to total fatty acids ratio	34.0 (2.0) %	1.36 (1.31, 1.40)	7.1 ⁻³⁹	1.26 (1.22, 1.31)	3.0 ⁻²³	1.28 (1.23, 1.34)	5.8 ⁻¹⁸	1.33 (1.28, 1.38)	2.1 ⁻²⁹
Docosahexaenoic to total fatty acids ratio	2.01 (0.68) %	0.81 (0.76, 0.85)	3.0 ⁻²¹	0.85 (0.81, 0.90)	7.0 ⁻¹²	0.86 (0.80, 0.92)	1.6 ⁻⁰⁶	0.81 (0.76, 0.86)	4.2 ⁻¹⁷
Linoleic to total fatty acids ratio	29.0 (3.4) %	0.74 (0.69, 0.78)	3.8 ⁻⁴¹	0.76 (0.72, 0.81)	1.1 ⁻³¹	0.77 (0.72, 0.82)	2.2 ⁻²⁰	0.75 (0.70, 0.80)	6.6 ⁻³¹
Omega-3 to total fatty acids ratio	4.42 (1.56) %	0.92 (0.87, 0.96)	6.8 ⁻⁰⁴	0.94 (0.89, 0.99)	1.4 ⁻⁰²	0.95 (0.88, 1.02)	2.0 ⁻⁰¹	0.92 (0.86, 0.97)	1.8 ⁻⁰³
Omega-6 to total fatty acids ratio	38.1 (3.6) %	0.72 (0.68, 0.77)	1.8 ⁻⁵¹	0.77 (0.73, 0.81)	6.9 ⁻³²	0.78 (0.73, 0.83)	1.3 ⁻²⁰	0.74 (0.69, 0.78)	3.6 ⁻³⁸
Other lipids									
Total cholines	2.53 (0.41) mmol/L	1.04 (0.99, 1.10)	1.3 ⁻⁰¹	1.01 (0.95, 1.06)	8.5 ⁻⁰¹	1.04 (0.98, 1.11)	2.4 ⁻⁰¹	1.03 (0.98, 1.09)	2.7 ⁻⁰¹
Phosphatidylcholines	2.08 (0.37) mmol/L	1.07 (1.02, 1.12)	1.7 ⁻⁰²	1.04 (0.99, 1.09)	2.1 ⁻⁰¹	1.08 (1.02, 1.15)	2.9 ⁻⁰²	1.05 (1.00, 1.11)	8.6 ⁻⁰²
Sphingomyelins	0.44 (0.07) mmol/L	0.92 (0.87, 0.97)	1.8 ⁻⁰³	0.88 (0.83, 0.93)	3.6 ⁻⁰⁶	0.91 (0.85, 0.98)	8.6 ⁻⁰³	0.93 (0.87, 0.99)	1.5 ⁻⁰²
Phosphoglycerides	2.25 (0.40) mmol/L	1.09 (1.04, 1.15)	9.9 ⁻⁰⁴	1.05 (1.00, 1.10)	9.4 ⁻⁰²	1.09 (1.02, 1.15)	1.9 ⁻⁰²	1.08 (1.02, 1.14)	9.8 ⁻⁰³
Glycolysis-related metabolites									
Lactate	3.81 (1.09) mmol/L	1.14 (1.08, 1.19)	3.9 ⁻⁰⁶	1.11 (1.06, 1.16)	1.2 ⁻⁰⁴	1.10 (1.04, 1.17)	4.1 ⁻⁰³	1.12 (1.07, 1.18)	9.8 ⁻⁰⁵
Citrate	0.06 (0.01) mmol/L	1.07 (1.01, 1.12)	2.0 ⁻⁰²	1.04 (0.98, 1.09)	2.3 ⁻⁰¹	1.05 (0.99, 1.11)	1.7 ⁻⁰¹	1.08 (1.02, 1.13)	1.3 ⁻⁰²
Glucose	3.57 (1.14) mmol/L	1.68 (1.63, 1.73)	1.2 ⁻⁸⁸	1.30 (1.25, 1.34)	2.9 ⁻²⁴	1.28 (1.23, 1.34)	1.0 ⁻¹⁵	1.60 (1.54, 1.65)	1.2 ⁻⁶⁰

Webtable 1. Distribution of metabolic biomarkers and their associations with incident type 2 diabetes

Metabolic biomarker	Mean (SD)	Hazard ratio (95% CI) per 1-SD higher level on the natural log scale							
		Standard model*		Standard model + HbA1c		Full model †		Standard model excluding first 3 years of follow-up	
		HR (95% CI) §	p-value	HR (95% CI) §	p-value	HR (95% CI) §	p-value	HR (95% CI) §	p-value
Amino acids									
Alanine	0.30 (0.08) mmol/L	1.29 (1.23, 1.35)	4.4 ⁻¹⁶	1.17 (1.11, 1.23)	6.0 ⁻⁰⁷	1.15 (1.07, 1.22)	5.7 ⁻⁰⁴	1.25 (1.19, 1.32)	3.4 ⁻¹¹
Glutamine	0.53 (0.08) mmol/L	0.89 (0.84, 0.94)	6.3 ⁻⁰⁶	0.93 (0.88, 0.98)	3.7 ⁻⁰³	0.92 (0.86, 0.98)	7.7 ⁻⁰³	0.91 (0.86, 0.96)	4.8 ⁻⁰⁴
Histidine	0.06 (0.01) mmol/L	0.95 (0.90, 1.00)	5.0 ⁻⁰²	0.96 (0.91, 1.01)	1.5 ⁻⁰¹	0.98 (0.92, 1.04)	6.1 ⁻⁰¹	0.94 (0.89, 1.00)	3.6 ⁻⁰²
Glycine	0.16 (0.06) mmol/L	0.82 (0.78, 0.86)	7.3 ⁻²²	0.86 (0.81, 0.90)	4.8 ⁻¹¹	0.85 (0.79, 0.90)	8.1 ⁻⁰⁹	0.82 (0.78, 0.87)	3.5 ⁻¹⁶
Isoleucine	0.05 (0.02) mmol/L	1.19 (1.14, 1.24)	5.6 ⁻¹¹	1.13 (1.07, 1.18)	1.3 ⁻⁰⁵	1.11 (1.04, 1.17)	2.9 ⁻⁰³	1.19 (1.14, 1.25)	7.7 ⁻¹⁰
Leucine	0.10 (0.03) mmol/L	1.19 (1.14, 1.24)	1.5 ⁻¹⁰	1.14 (1.09, 1.19)	1.4 ⁻⁰⁶	1.12 (1.06, 1.18)	1.1 ⁻⁰³	1.19 (1.13, 1.24)	4.5 ⁻⁰⁹
Valine	0.20 (0.04) mmol/L	1.31 (1.26, 1.37)	4.9 ⁻²⁴	1.21 (1.16, 1.26)	8.2 ⁻¹²	1.19 (1.13, 1.26)	3.0 ⁻⁰⁷	1.31 (1.26, 1.37)	1.7 ⁻²⁰
Phenylalanine	0.05 (0.01) mmol/L	1.11 (1.06, 1.16)	4.7 ⁻⁰⁵	1.05 (1.00, 1.10)	8.6 ⁻⁰²	1.06 (1.00, 1.12)	6.9 ⁻⁰²	1.12 (1.06, 1.17)	7.9 ⁻⁰⁵
Tyrosine	0.06 (0.01) mmol/L	1.33 (1.27, 1.38)	1.0 ⁻²⁶	1.19 (1.14, 1.24)	2.8 ⁻¹⁰	1.21 (1.15, 1.28)	7.0 ⁻⁰⁹	1.32 (1.26, 1.37)	1.1 ⁻²¹
Ketone bodies									
Acetate mmol/l	0.02 (0.03) mmol/L	0.95 (0.91, 1.00)	3.8 ⁻⁰²	1.00 (0.96, 1.05)	8.7 ⁻⁰¹	1.02 (0.96, 1.07)	6.3 ⁻⁰¹	0.95 (0.90, 1.00)	7.4 ⁻⁰²
Acetoacetate mmol/l	0.01 (0.01) mmol/L	1.04 (0.98, 1.09)	2.1 ⁻⁰¹	1.03 (0.98, 1.09)	3.0 ⁻⁰¹	1.03 (0.97, 1.10)	4.4 ⁻⁰¹	1.05 (1.00, 1.11)	8.2 ⁻⁰²
3-Hydroxybutyrate mmol/l	0.01 (0.01) mmol/L	0.88 (0.83, 0.94)	1.3 ⁻⁰⁵	0.95 (0.90, 1.01)	1.1 ⁻⁰¹	0.98 (0.92, 1.05)	6.6 ⁻⁰¹	0.90 (0.84, 0.96)	6.2 ⁻⁰⁴
Acetone	0.08 (0.03) mmol/L	1.06 (1.00, 1.11)	5.7 ⁻⁰²	1.03 (0.97, 1.08)	4.1 ⁻⁰¹	1.01 (0.94, 1.07)	8.5 ⁻⁰¹	1.06 (1.00, 1.12)	5.2 ⁻⁰²
Pyruvate	0.06 (0.06) mmol/L	0.98 (0.92, 1.03)	4.0 ⁻⁰¹	0.98 (0.92, 1.04)	5.8 ⁻⁰¹	0.99 (0.92, 1.06)	7.6 ⁻⁰¹	0.99 (0.93, 1.05)	6.7 ⁻⁰¹
Fluid balance									
Albumin	38.9 (3.3) g/L	0.99 (0.94, 1.04)	6.5 ⁻⁰¹	1.08 (1.03, 1.13)	6.8 ⁻⁰³	1.11 (1.05, 1.17)	1.4 ⁻⁰³	0.98 (0.93, 1.04)	5.9 ⁻⁰¹
Creatinine	0.07 (0.02) mmol/L	1.09 (1.04, 1.15)	2.9 ⁻⁰³	1.06 (1.01, 1.12)	4.9 ⁻⁰²	1.04 (0.97, 1.11)	3.6 ⁻⁰¹	1.09 (1.03, 1.15)	9.3 ⁻⁰³
Inflammation									
Glycoprotein acetyls	0.79 (0.12) mmol/L	1.32 (1.27, 1.38)	3.8 ⁻²³	1.09 (1.04, 1.15)	2.9 ⁻⁰³	1.06 (1.00, 1.13)	1.1 ⁻⁰¹	1.33 (1.27, 1.39)	8.4 ⁻²¹

* Standard model: Stratified by age-at-risk and sex and adjusted for assessment centre, Townsend deprivation index, smoking, alcohol drinking, body mass index, waist-to-hip ratio, fasting duration and spectrometer

† Full model: Standard model additionally adjusted for HbA1c, ethnicity, parental history of diabetes, physical activity, and intakes of whole grains, refined grains, fruit, vegetables, cheese, unprocessed red meat, processed meat, non-oily fish, oily fish, type of spread, coffee (regular and decaffeinated), tea, and dietary supplements

§ HR per 1-SD higher metabolic biomarker on the natural log scale

|| Controlled for false discovery rate

Webtable 2. Diagnosis and medication codes for assessment of type 2 diabetes status in primary and secondary healthcare and death registry records and UK Biobank verbal interview

Code format	Codes
<i>Diagnosis codes</i>	
ICD10	E11
Read v2	C1001, C1011, C1021, C1031, C1041, C1051, C1061, C1071, C1074, C109., C1090, C1091, C1092, C1093, C1094, C1095, C1096, C1097, C1099, C109A, C109B, C109C, C109D, C109E, C109F, C109G, C109H, C109J, C109K, C10F., C10F0, C10F1, C10F2, C10F3, C10F4, C10F5, C10F6, C10F7, C10F9, C10FA, C10FB, C10FC, C10FD, C10FE, C10FF, C10FG, C10FH, C10FJ, C10FK, C10FL, C10FM, C10FN, C10FP, C10FQ, C10FR, C10P1, C10y1, C10z1, L1806, L180B,
Read CTv3	66A3., C1001, C1011, C1021, C1031, C1041, C1051, C1061, C1071, C1074, C109., C1090, C1091, C1092, C1093, C1094, C1095, C1096, C1097, C10y1, C10z1, L1806, X40J5, X40J6, Xaagf, XacsX, XacsY, XaELQ, XaEnp, XaEnq, XaF05, XaFmA, XaFn7, XaFn8, aFn8, XaFn9, XaFWI, XalfG, XalfI, XalzQ, XalzR, XaJQp, XaKyX, XaXZR, XE10F, XE12A, XE12A, XE12A, XE12A, XM19j
<i>Medication codes*</i>	
Read v2	f1..., , f11..., f111., f112., f12..., f121., f122., f123., f124., f125., f126., f127., f128., f129., f12A., f12a., f12B., f12C., f12D., f12d., f12E., f12e., f12F., f12g., f12G., f12H., f12I., f12J., f12K., f12L., f12M., f12Q., f12R., f12s., f12S., f12T., f12U., f12V., f12W., f12X., f12y., f12Y., f12z., f12Z., f13., f131., f132., f133., f134., f135., f136., f137., f138., f139., f13A., f14., f141., f142., f143., f144., f145., f146., f14w., f14x., f14y., f14z., f15., f151., f152., f153., f154., f155., f15x., f15y., f15z., f2..., f21..., f211., f212., f22., f221., f222., f223., f224., f225., f226., f227., f228., f23., f231., f24., f241., f242., f25., f251., f252., f253., f254., f255., f256., f257., f258., f259., f25a., f25A., f25b., f25B., f25c., f25C., f25d., f25D., f25e., f25E., f25f., f25F., f25g., f25G., f25h., f25H., f25i., f25j., f25k., f25l., f25m., f25n., f25o., f25p., f25q., f25r., f25s., f25t., f25u., f25v., f25W., f25w., f25X., f25x., f25Y., f25y., f25z., f26., f261., f262., f27., f271., f272., f273., f274., f275., f276., f277., f278., f279., f27A., f27a., f27b., f27B., f27C., f27c., f27D., f27d., f27E., f27e., f27f., f27F., f27g., f27G., f27h., f27H., f27i., f27I., f27J., f27j., f27k., f27K., f27l., f27L., f27m., f27M., f27n., f27N., f27o., f27O., f27P., f27p., f27Q., f27q., f27R., f27r., f27S., f27s., f27T., f27t., f27u., f27v., f27V., f27W., f27w., f27x., f27X., f27Y., f27y., f27z., f27Z., f28., f281., f282., f283., f284., f285., f286., f287., f288., f289., f28A., f28B., f28C., f28D., f28E., f28F., f29., f291., f292., f293., f294., f295., f296., f297., f298., f299., f29A., f29B., f29C., f2A., f2A1., f2A2., f2A3., f2Ax., f2Ay., f2Az., f2B., f2B1., f2B2., f2B3., f2B4., f2B5., f2B6., f2C., f2C1., f2C2., f3..., f31., f311., f31z., f32., f321., f322., f323., f324., f325., f33., f331., f332., f333., f334., f335., f336., f337., f338., f339., f33a., f33b., f33c., f33d., f33e., f33f., f33g., f34., f341., f34z., f35., f351., f352., f353., f354., f355., f356., f357., f358., f359., f35A., f35B., 35C., f35D., f35w., f35x., f35y., f35z., f36., f361., f362., f363., f364., f36y., f36z., f37., f371., f37z., f38., f381., f38z., f39., f391., f392., f39y., f39z., f3A., f3a., f3A1., f3a1., f3A2., f3a2., f3a3., f3A3., f3a4., f3A4., f3A5., f3A6., f3A7., f3A8., f3A9., f3AA., f3AB., f3AC., f4..., f41., f411., f412., f413., f414., f415., f416., f417., f418., f419., f41A., f41B., f41C., f41D., f41E., f41F., f41G., f41H., f41I., f41J., f41s., f41t.,

**Read v2
continued...**

f41u., f41v., f41w., f41x., f41y., f41z., ft1., ft11., ft12., ft13., ft14., ft2., ft21., ft22., ft23., ft24., ft25., ft26., ft3., ft31., ft32., ft33., ft34., ft35., ft36., ft37., ft38., ft39., ft4., ft41., ft42., ft43., ft44., ft45., ft46., ft4u., ft4v., ft4w., ft4x., ft4y., ft4z., ft5., ft51., ft52., ft53., ft54., ft55., ft56., ft5x., ft5y., ft5z., ft6., ft61., ft62., ft63., ft6x., ft6y., ft6z., ft7., ft71., ft7z., ft8., ft81., ft82., ft83., ft8x., ft8y., ft8z., ft9., ft91., ft92., ft93., ft94., ft95., ft9x., ft9y., ft9z., fta., fta1., ftaZ., ftb., ftb1., ftb2., ftby., ftbz., ftc., ftc1., ftc2., ftd., ftd1., ftd2., ftdy., ftdz., fte., fte1., ftez., ftf., ftf1., ftf2., ftg., ftg1., ftg2., ftg3., ftg4., fth., fth1., fth2., fth3., fth4., fti., fti1., fti2., fti3., fti4., ftj., ftj1., ftj2., ftj3., ftj4., ftj5., ftj6. ftk., ftk1., ftk2., ftk3., ftk4., ftk5., ftk6., ftl., ftl1., ftl2., ftm., ftm1., ftm2., ftm3., ftm4., ftn., ftn1., ftn2., ftn3., ftn4., fto., fto1., fto2., fto3., fto4., ftp., ftp1., ftp2., ftp3., ftp4., ftq., ftq1., ftq2., ftq3., ftq4., ftq5., ftq6., ftq7., ftq8., ftr., ftr1., ftr2., ftr3., ftr4., ftr5., ftr6., ftr7., ftr8., fts., fts1., fts2., fw..., fw1., fw11., fw12., fw13., fw14., fw15., fw16., fw2., fw21., fw22., pm1e.

**British National
Formulary**

0601011A0, 0601011A0, 0601011A0, 0601011A0, 0601011P0, 0601011Q0, 0601011R0, 060101200, 0601012C0, 0601012D0, 0601012F0, 0601012G0, 0601012L0, 0601012N0, 0601012S0, 0601012U0, 0601012V0, 0601012W0, 0601012X0, 0601012Z0, 0601021A0, 0601021B0, 0601021E0, 0601021H0, 0601021K0, 0601021M0, 0601021P0, 0601021R0, 0601021T0, 0601021V0, 0601021X0, 0601022B0, 0601022P0, 0601023A0, 0601023AA, 0601023AB, 0601023AC, 0601023AD, 0601023AE, 0601023AF, 0601023AG, 0601023AH, 0601023AI, 0601023AJ, 0601023AK, 0601023AL, 0601023AM, 0601023AN, 0601023AP, 0601023AQ, 0601023AR, 0601023AS, 0601023AU, 0601023AV, 0601023AW, 0601023AX, 0601023B0, 0601023M0, 0601023R0, 0601023S0, 0601023T0, 0601023U0, 0601023V0, 0601023W0, 0601023X0, 0601023Y0, 0601023Z0

**UKB verbal
interview**

1140857494, 1140857496, 1140857500, 1140857502, 1140857506, 1140857584, 1140857586, 1140857590, 1140868902, 1140868908, 1140874646, 1140874650, 1140874652, 1140874658, 1140874660, 1140874664, 1140874666, 1140874674, 1140874678, 1140874680, 1140874686, 1140874690, 1140874706, 1140874712, 1140874716, 1140874718, 1140874724, 1140874726, 1140874728, 1140874732, 1140874736, 1140874740, 1140874744, 1140874746, 1140882964, 1140883066, 1140884600, 1140910564, 1140910566, 1140910818, 1140921964, 1141152590, 1141153254, 1141153262, 1141156984, 1141157284, 1141168660, 1141168668, 1141169504, 1141171508, 1141171646, 1141171652, 1141173786, 1141173882, 1141177600, 1141177606, 1141189090, 1141189094

*Participants for whom receiving metformin (self-reported use or recorded in primary care data) was the only evidence of a diagnosis of diabetes were not considered to have diabetes given other indications for its use. Participants for whom receiving insulin (self-reported use or a prescription recorded in primary care data) was the only evidence of a diagnosis of diabetes were not considered to have type 2 diabetes.

Webtable 3. Baseline characteristics of UK Biobank participants with and without NMR-metabolomics profiling

Baseline characteristics*	Included in NMR-metabolomics profiling	
	Yes	No
No. of participants	118036	384454
Age, sex and socioeconomic factors		
Mean age (SD), years	56.5 (8.1)	56.5 (8.1)
Women, %	54	54
Townsend Deprivation Index (SD) [†]	0.0 (1.0)	0.0 (1.0)
Lifestyle factors		
Smoking, %		
Never or occasional	57	58
Previous	35	34
Current regular	8	8
Alcohol drinking, %		
Never or occasional	27	27
Previous	4	4
Current regular	69	69
Anthropometry, mean (SD)		
BMI, kg/m ²	27.4 (4.8)	27.4 (4.8)
WC, cm	90 (13)	90 (14)
HC, cm	103 (9)	103 (9)
WHR	0.87 (0.09)	0.87 (0.09)
Parental history of diabetes, %	20	20
Mean fasting time (SD), hours	3.8 (2.4)	3.8 (2.5)

*Standardised to age and sex structure of the study population

[†]Standardised Townsend Deprivation Index, higher scores represent higher levels of deprivation

BMI=body mass index; HC=hip circumference; WC=waist circumference; WHR=waist-to-hip ratio

Participants with missing data: age n=1; sex n=1; Townsend Deprivation Index n=624; smoking n=1171; alcohol drinking n=1654; BMI n=10136; WC n=2161; HC n=2220; WHR n=2226; parental history of diabetes n=58299; fasting time n=1234.

Webtable 4. Associations of the first 11 metabolic biomarker principal components with risk of incident type 2 diabetes

Principal component	Main model*	Main model + sequential adjustment †
	HR (95% CI)	HR (95% CI)
1	1.23 (1.17, 1.30)	1.23 (1.17, 1.30)
2	0.78 (0.73, 0.82)	0.71 (0.67, 0.75)
3	1.23 (1.18, 1.29)	1.18 (1.13, 1.24)
4	1.09 (1.04, 1.15)	1.05 (1.00, 1.10)
5	1.07 (1.02, 1.13)	1.10 (1.04, 1.15)
6	0.97 (0.92, 1.01)	1.00 (0.95, 1.05)
7	0.74 (0.70, 0.78)	0.77 (0.73, 0.82)
8	0.85 (0.81, 0.90)	0.90 (0.86, 0.95)
9	0.94 (0.90, 0.99)	0.91 (0.87, 0.96)
10	0.87 (0.83, 0.91)	0.92 (0.88, 0.97)
11	0.92 (0.87, 0.96)	0.97 (0.93, 1.02)

*Hazard ratios (95% CI) stratified by age-at-risk and sex and adjusted for assessment centre, Townsend deprivation index, smoking, alcohol drinking, body mass index, waist-to-hip ratio, fasting duration, and spectrometer.

† Hazard ratios (95% CI) stratified by age-at-risk and sex and adjusted for assessment centre, Townsend deprivation index, smoking, alcohol drinking, body mass index, waist-to-hip ratio, fasting duration, spectrometer, and preceding principal components. E.g. for principal component 3 the hazard ratio is stratified by age-at-risk and sex and adjusted for assessment centre, Townsend deprivation index, smoking, alcohol drinking, body mass index, waist-to-hip ratio, fasting duration, spectrometer, principal component 1 and principal component 2.

Webtable 5. Regression models for risk of incident type 2 diabetes

	Basic model*	Basic model* plus metabolic biomarkers †	Extended model ‡	Extended model ‡ plus metabolic biomarkers †
	HR (95% CI)	HR (95% CI)	HR (95% CI)	HR (95% CI)
Age (years)				
<50	1.00 (reference)	1.00 (reference)	1.00 (reference)	1.00 (reference)
50 to <65	1.45 (1.28, 1.64)	1.47 (1.30, 1.67)	1.39 (1.23, 1.58)	1.40 (1.23, 1.59)
≥65	2.05 (1.76, 2.39)	2.09 (1.79, 2.44)	1.88 (1.61, 2.20)	1.90 (1.62, 2.23)
Sex				
Women	1.00 (reference)	1.00 (reference)	1.00 (reference)	1.00 (reference)
Men	1.56 (1.42, 1.72)	1.05 (0.94, 1.18)	1.62 (1.47, 1.79)	1.27 (1.12, 1.44)
Parental history of diabetes				
No	1.00 (reference)	1.00 (reference)	1.00 (reference)	1.00 (reference)
Yes	1.92 (1.73, 2.12)	1.85 (1.67, 2.05)	1.86 (1.68, 2.06)	1.85 (1.67, 2.05)
Body mass index (kg/m²)				
<25	1.00 (reference)	1.00 (reference)	1.00 (reference)	1.00 (reference)
25 to <30	2.45 (2.07, 2.90)	1.83 (1.54, 2.18)	1.64 (1.38, 1.96)	1.52 (1.27, 1.82)
≥30	6.71 (5.70, 7.90)	3.89 (3.26, 4.64)	2.69 (2.19, 3.30)	2.32 (1.89, 2.86)
HbA1c (%)				
<6.0 (normal)	1.00 (reference)	1.00 (reference)	1.00 (reference)	1.00 (reference)
≥6.0 (pre-diabetes)	10.09 (9.02, 11.29)	8.61 (7.68, 9.64)	8.80 (7.86, 9.85)	8.25 (7.37, 9.24)
Principal components				
1		1.26 (1.19, 1.34)		1.16 (1.08, 1.25)
2		0.71 (0.67, 0.76)		0.82 (0.76, 0.88)
3		1.12 (1.07, 1.17)		1.11 (1.06, 1.17)
4		1.01 (0.96, 1.06)		1.00 (0.95, 1.05)
5		1.08 (1.03, 1.14)		1.07 (1.02, 1.12)
6		1.01 (0.96, 1.05)		1.00 (0.96, 1.05)
7		0.76 (0.73, 0.80)		0.80 (0.76, 0.84)
8		0.92 (0.87, 0.97)		0.92 (0.88, 0.97)
9		0.92 (0.88, 0.97)		0.91 (0.87, 0.96)
10		0.92 (0.88, 0.97)		0.93 (0.89, 0.98)
11		1.01 (0.97, 1.06)		1.02 (0.98, 1.07)
Blood pressure				
SBP ≤130 mmHg and DBP ≤85 mmHg and no antihypertensive medications			1.00 (reference)	1.00 (reference)
SBP >130 mmHg or DBP >85 mmHg or on antihypertensive medication			1.48 (1.30, 1.69)	1.42 (1.25, 1.62)
Waist circumference (cm)				
≤102 in men; ≤88 in women			1.00 (reference)	1.00 (reference)
>102 in men; >88 in women			1.82 (1.59, 2.08)	1.70 (1.49, 1.95)
HDL-cholesterol (mmol/L)				
≥1.0344 in men; ≥1.293 in women			1.00 (reference)	1.00 (reference)
<1.0344 in men; <1.293 in women			1.80 (1.62, 1.99)	1.38 (1.21, 1.58)
Triglycerides (mmol/L)				
<1.6935			1.00 (reference)	1.00 (reference)
≥1.6935			1.57 (1.41, 1.75)	1.12 (0.96, 1.31)

*Basic model: Hazard ratios (95% CI) adjusted for age, sex, parental history of diabetes, BMI and HbA1c

† Metabolic biomarkers comprise the first 11 metabolic biomarker principal components

‡ Extended model: Hazard ratios (95% CI) adjusted for age, sex, parental history of diabetes, BMI, HbA1c, waist circumference, blood pressure, triglycerides, HDL-cholesterol

DBP= diastolic blood pressure; SBP= systolic blood pressure

Webtable 6. Performance of risk prediction models for incident type 2 diabetes among participants taking lipid-lowering medication at recruitment

Performance metric	Basic model* plus metabolic biomarkers †		Extended model ‡ plus metabolic biomarkers †	
	Basic model*		Extended model ‡	
C-statistic (CI) §	0.761 (0.747, 0.777)	0.789 (0.779, 0.806)	0.782 (0.768, 0.798)	0.793 (0.783, 0.810)
Metrics of relative performance				
χ^2 #	174 (p<0.0001)		88 (p<0.0001)	
%increase χ^2	15		7	
Absolute IDI # \$	1.3 (0.6, 2.0)		0.7 (0.3, 1.1)	
Relative IDI (%) (CI) # \$	9.1 (4.7, 14.2)		4.4 (1.8, 8.0)	
Continuous NRI (CI) # **				
Events	0.13 (0.10, 0.21)		0.07 (0.03, 0.15)	
Non-events	0.24 (0.20, 0.29)		0.13 (0.08, 0.17)	
Overall	0.38 (0.33, 0.48)		0.21 (0.11, 0.29)	

* Basic model: age, sex, parental history of diabetes, body mass index, HbA1c

† Metabolic biomarkers comprise the first 11 metabolic biomarker principal components

‡ Extended model: basic model plus waist circumference, blood pressure, triglycerides, HDL-cholesterol

§ The **c-statistic** measures the ability of a model to rank participants from low to high risk. Given two randomly selected individuals, one who develops T2D and one who does not, the c-statistic is the probability that the model will give a higher predicted risk for the individual who develops T2D. An uninformative model will have a c-statistic of 0.5 and a model that discriminates perfectly will have a c-statistic of 1.0.

|| 11 DF

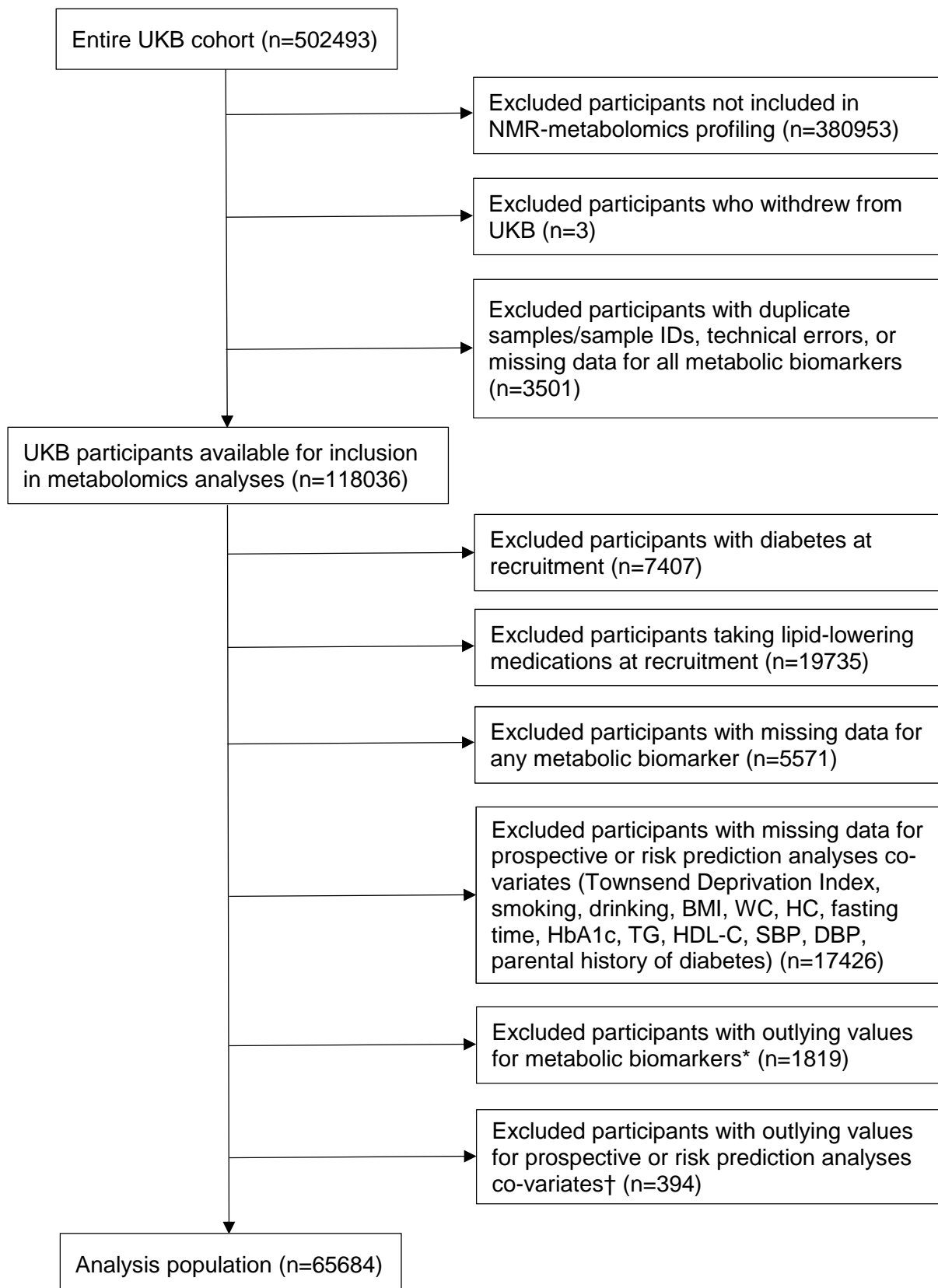
Bias-corrected estimates and confidence intervals were derived using 200 bootstrap samples

\$ The **IDI** quantifies the difference between two models in their ability to predict risk. It is calculated as the difference between the two models in the mean predicted T2D risk among those who did develop T2D minus the mean predicted risk of T2D in those who did not develop T2D (i.e., it is the difference between two differences). When metabolic biomarkers were added to the basic model, the separation in mean predicted T2D risk between those who did develop T2D, compared with those who did not develop T2D, increased in relative terms by 9.1%. Positive IDI values indicate improved T2D risk classification following addition of metabolic biomarkers to the risk prediction model.

** The continuous **NRI** quantifies the appropriateness of the change in predicted probabilities of T2D between two models. The 'Events' NRI is calculated among those who developed T2D, and the 'Non-events' NRI is calculated among those who did not develop T2D. Both statistics are calculated as the probability of an 'appropriate' change in predicted risk (after addition of metabolic biomarkers to the model) minus the probability of an 'inappropriate' change in predicted risk. For those who developed T2D, an appropriate change would be a higher predicted T2D risk after addition of metabolic biomarkers to the model. An inappropriate change would be a lower predicted T2D risk after addition of metabolic biomarkers to the model. When metabolic biomarkers were added to the basic model, among those who developed T2D, 13% more were assigned a higher predicted T2D risk than were assigned a lower predicted risk. The overall NRI is the sum of the 'Events' and 'Non-events' NRI statistics. Positive NRI values indicate that addition of metabolic biomarkers results in a superior model.

DF= degrees of freedom; IDI= integrated discrimination improvement; NRI= net reclassification improvement; T2D= type 2 diabetes

Webfigure 1. Participant exclusions to derive analysis population



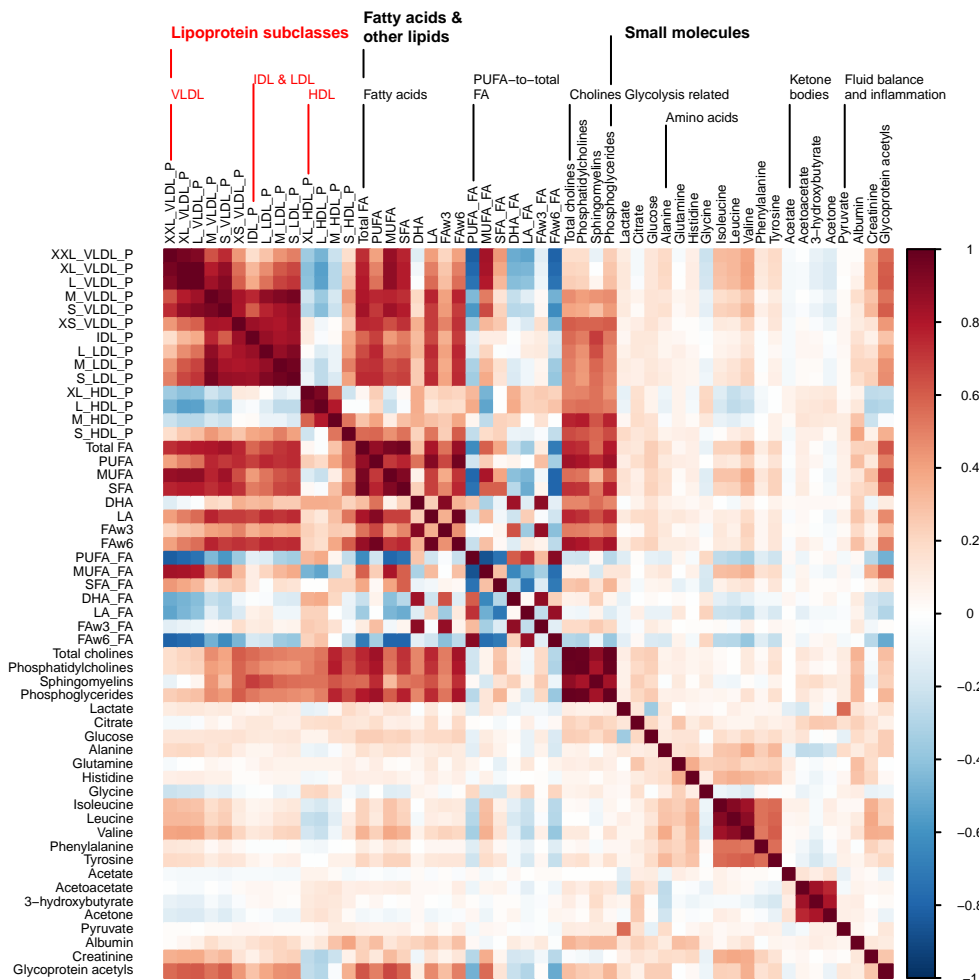
* Values >4 standard deviations from the mean and within the top or bottom 0.003% of the original or log-transformed metabolic biomarker distribution

† Weight <40 or ≥150 kg; height <140 or ≥200 cm; BMI <15 or ≥50 kg/m²; WC <55 or ≥145 cm; HC <75 or ≥150 cm; WHR <0.60 or ≥1.15

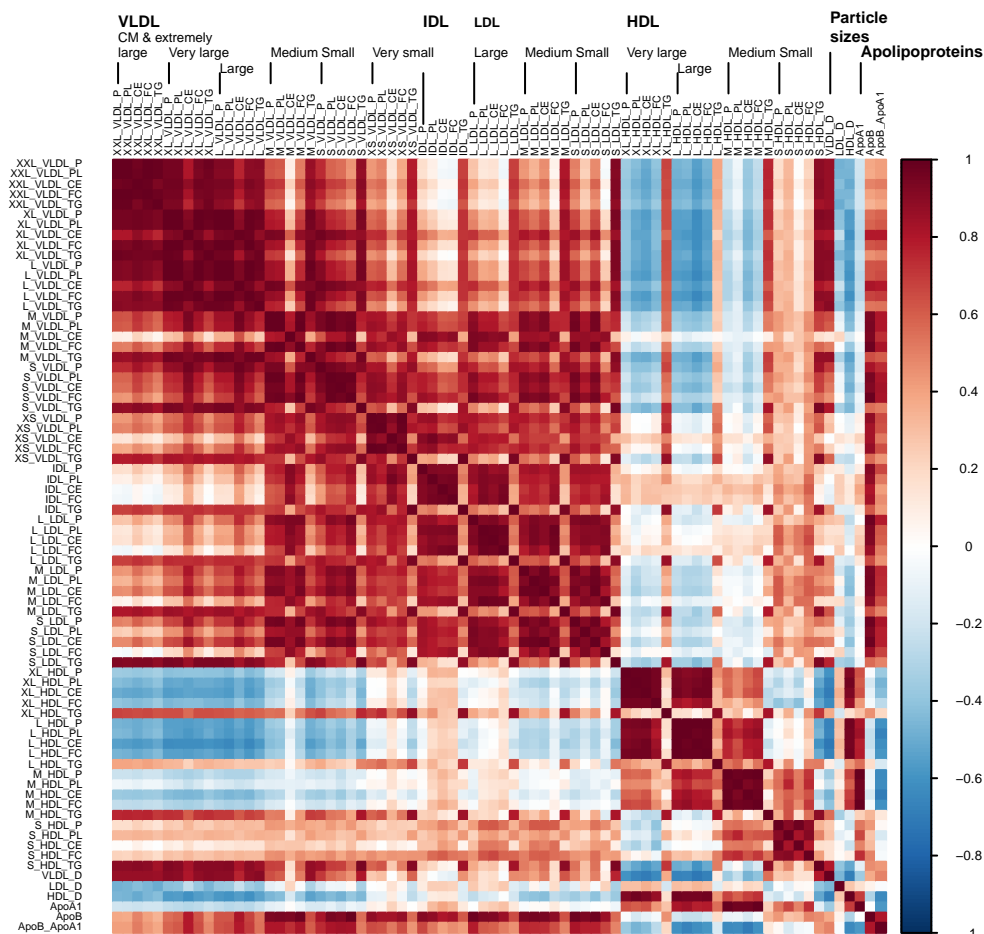
BMI=body mass index; DBP=diastolic blood pressure; HC=hip circumference; HDL-C=HDL-cholesterol from routine clinical chemistry measures; SBP=systolic blood pressure; TG=triglycerides from routine clinical chemistry measures; UKB=UK Biobank; WC=waist circumference

Webfigure 2. Cross-correlations of metabolic biomarkers

a) Lipoproteins, fatty acids and other lipids, and small molecules

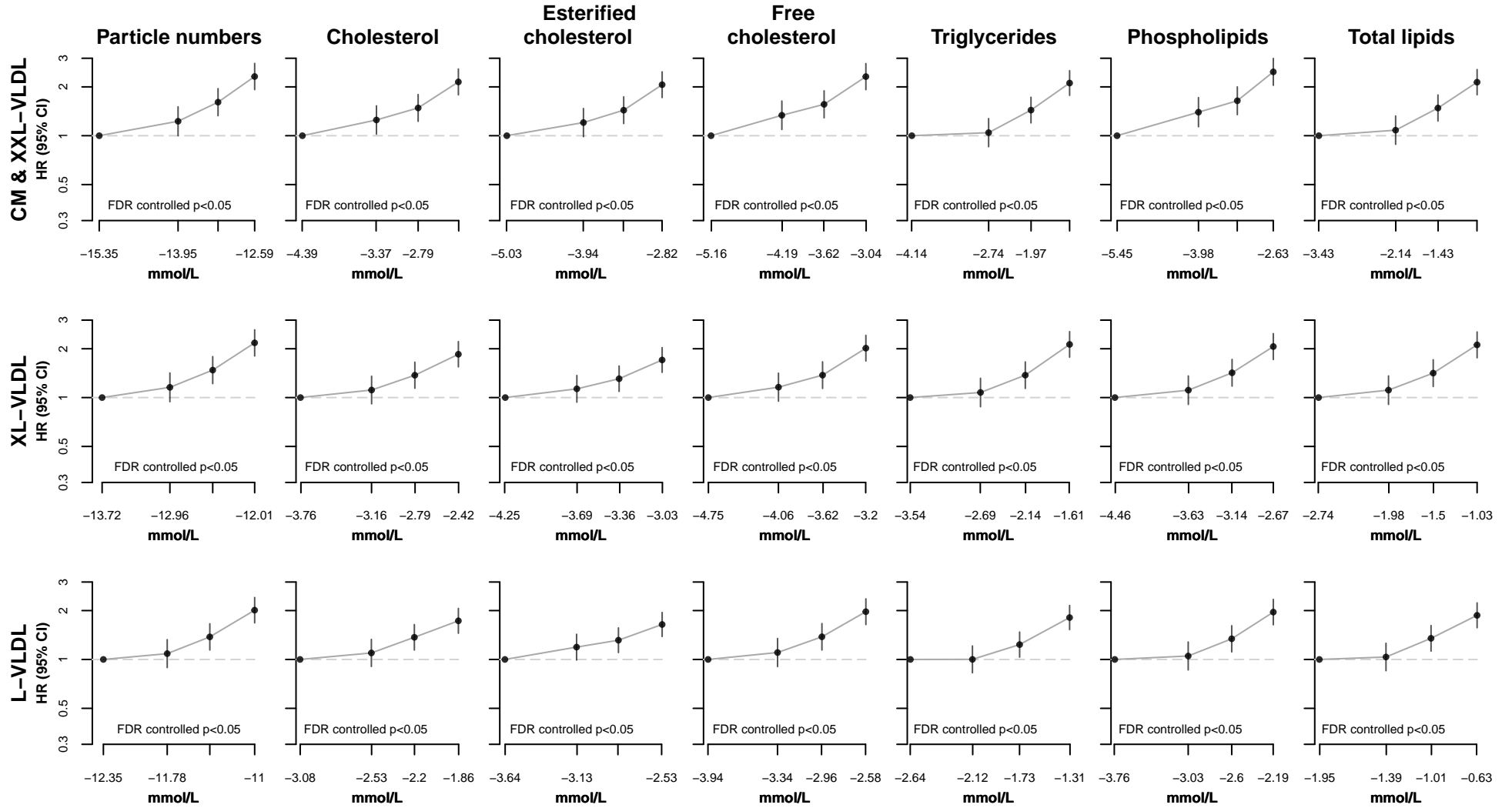


b) Lipoproteins, lipids by lipoprotein subclasses, particle sizes, and apolipoproteins



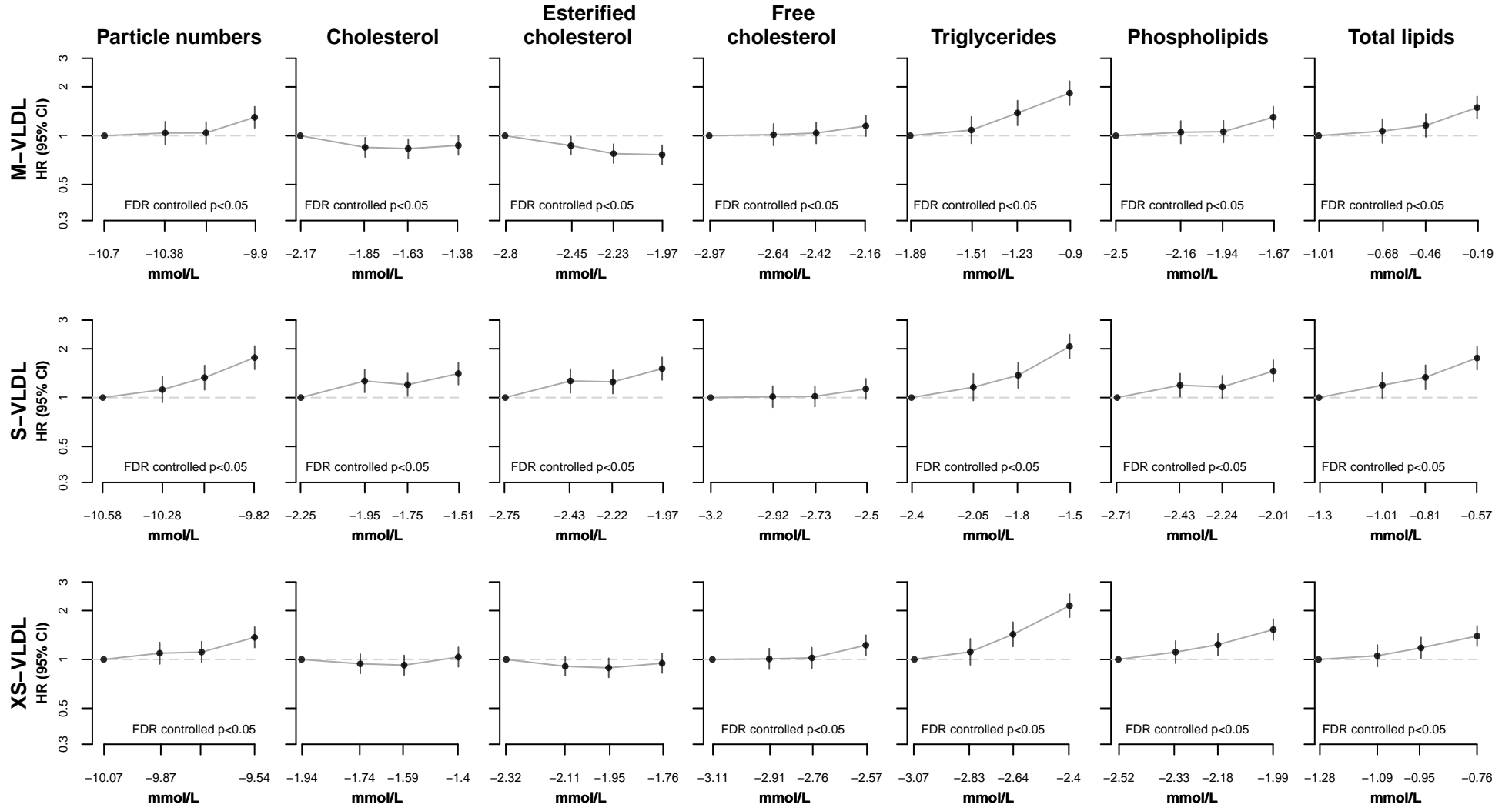
Apo-A1=apolipoprotein A1; Apo-B=apolipoprotein B; DHA=docosahexaenoic acid; FA=fatty acids; FAW3=omega-3 fatty acids; FAW6=omega-6 fatty acids; HDL=high density lipoproteins; HDL-D=high density lipoprotein particle diameter; IDL=intermediate density lipoproteins; L=large; LA=linoleic acid; LDL=low density lipoproteins; LDL-D=low density lipoprotein particle diameter; LP=lipoprotein; M=medium; MUFA=monounsaturated fatty acids; PUFA=polyunsaturated fatty acids; S=small; SFA=saturated fatty acids; T2D=type 2 diabetes; VLDL=very low density lipoproteins; VLDL-D=very low density lipoprotein particle diameter; XL=very large; XS=very small; XXL=extremely large

Webfigure 3. Associations of metabolic biomarkers with risk of incident type 2 diabetes



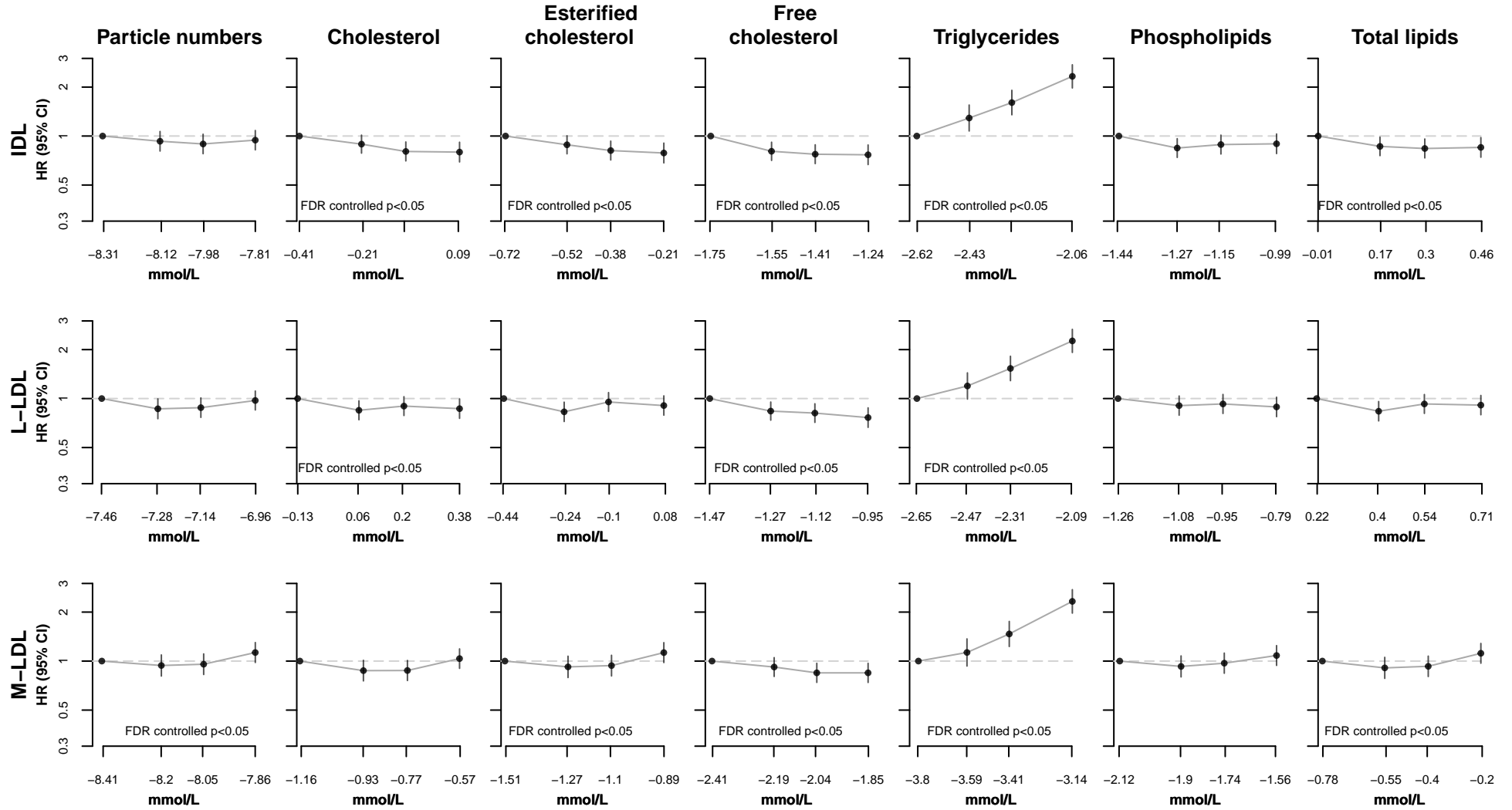
Hazard ratios (HR) stratified by age-at-risk and sex and adjusted for assessment centre, Townsend deprivation index, smoking, alcohol drinking, body mass index, waist-to-hip ratio, fasting duration, and spectrometer. Numbers on the x-axis correspond to median values within each quartile for each metabolic biomarker on the natural log scale. Circles represent the HR and vertical lines indicate the 95% CI. CM= chylomicrons; FA= fatty acids; HDL= high density lipoproteins; IDL= intermediate density lipoproteins; L= large; LDL= low density lipoproteins; M= medium; S= small; VLDL= very low density lipoproteins; XL= very large; XS= very small; XXL= extremely large

Webfigure 3. Associations of metabolic biomarkers with risk of incident type 2 diabetes



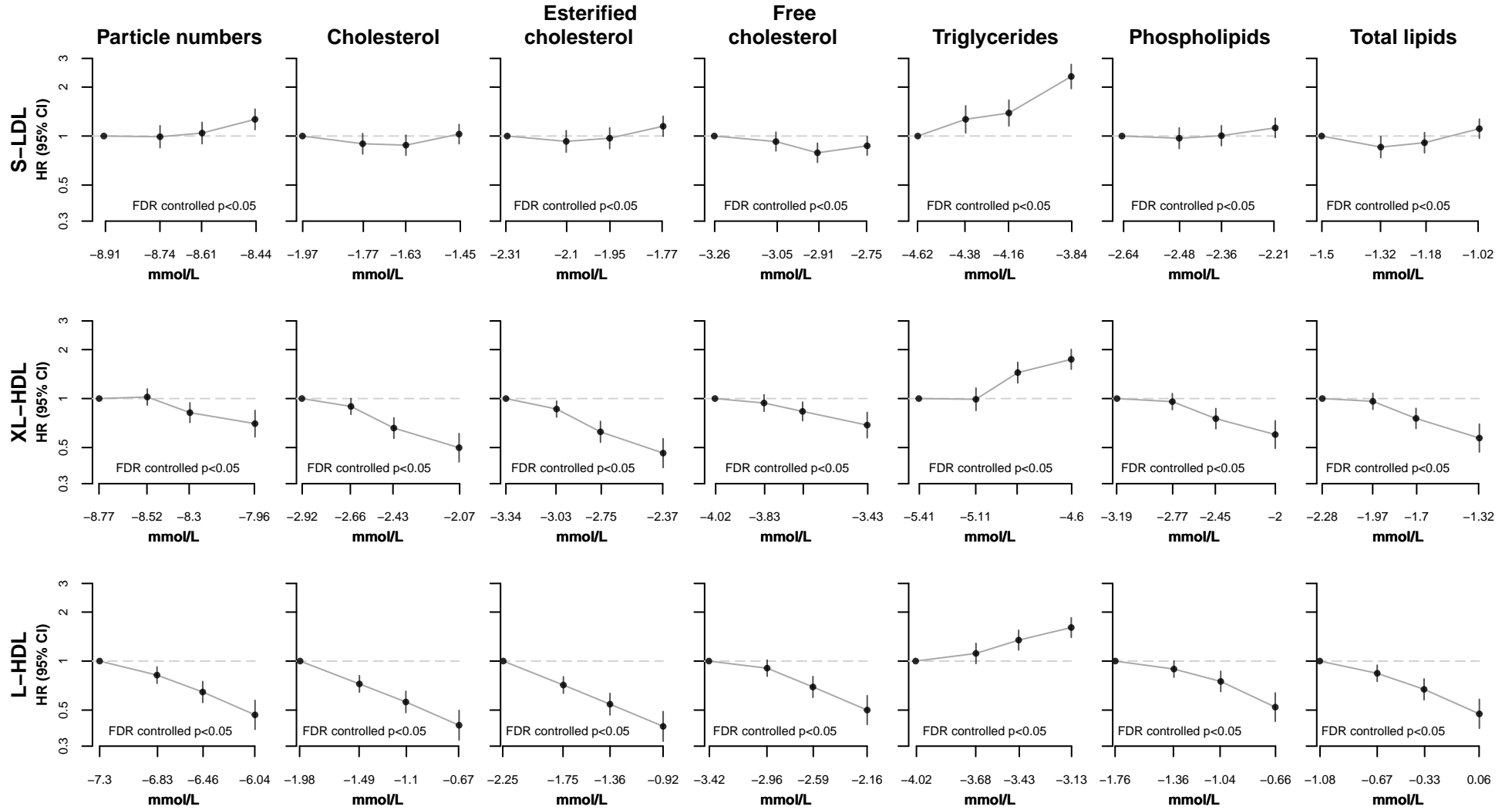
Hazard ratios (HR) stratified by age-at-risk and sex and adjusted for assessment centre, Townsend deprivation index, smoking, alcohol drinking, body mass index, waist-to-hip ratio, fasting duration, and spectrometer. Numbers on the x-axis correspond to median values within each quartile for each metabolic biomarker on the natural log scale. Circles represent the HR and vertical lines indicate the 95% CI. CM= chylomicrons; FA= fatty acids; HDL= high density lipoproteins; IDL= intermediate density lipoproteins; L= large; LDL= low density lipoproteins; M= medium; S= small; VLDL= very low density lipoproteins; XL= very large; XS= very small; XXL= extremely large

Webfigure 3. Associations of metabolic biomarkers with risk of incident type 2 diabetes



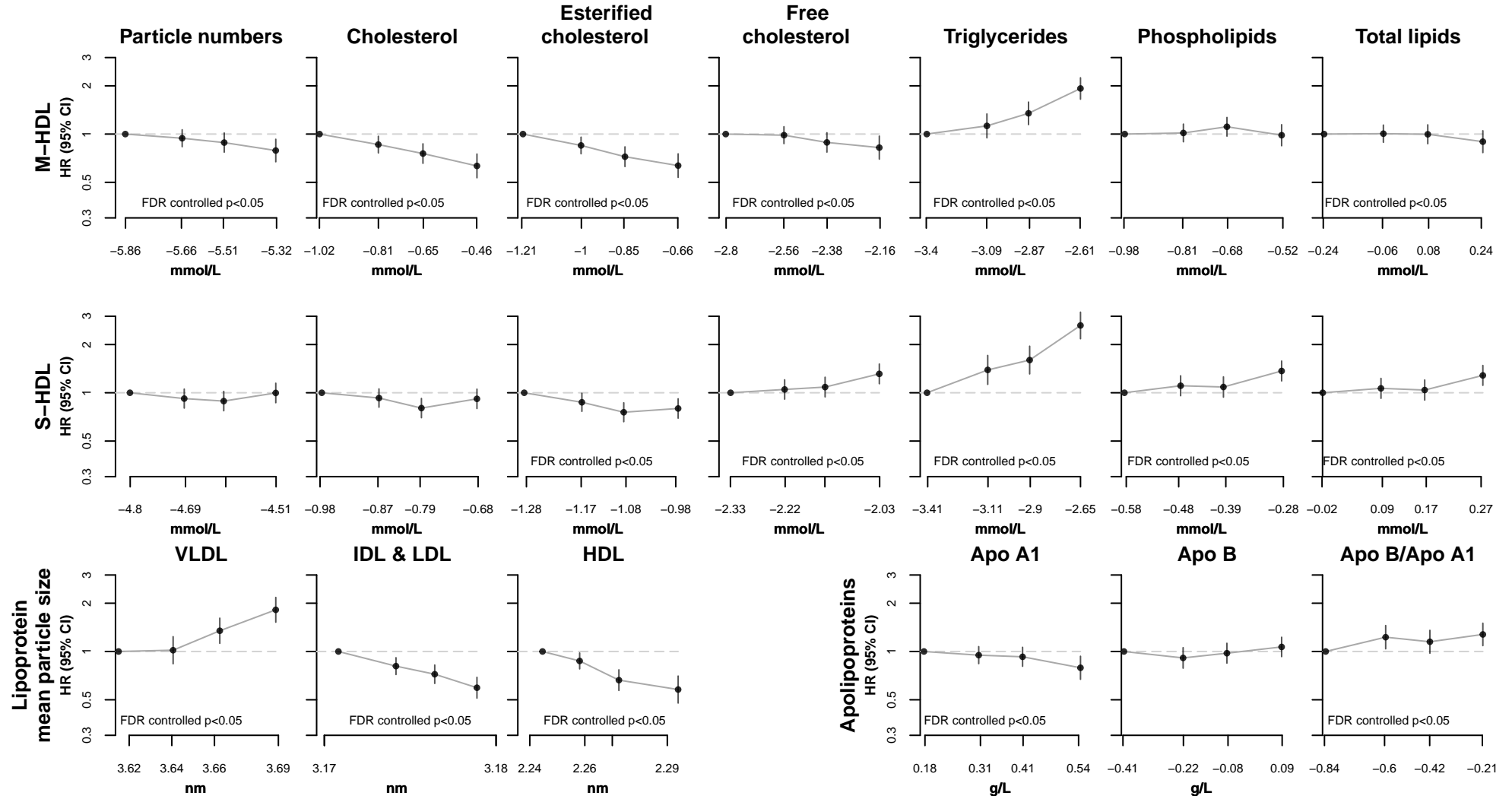
Hazard ratios (HR) stratified by age-at-risk and sex and adjusted for assessment centre, Townsend deprivation index, smoking, alcohol drinking, body mass index, waist-to-hip ratio, fasting duration, and spectrometer. Numbers on the x-axis correspond to median values within each quartile for each metabolic biomarker on the natural log scale. Circles represent the HR and vertical lines indicate the 95% CI. CM= chylomicrons; FA= fatty acids; HDL= high density lipoproteins; IDL= intermediate density lipoproteins; L= large; LDL= low density lipoproteins; M= medium; S= small; VLDL= very low density lipoproteins; XL= very large; XS= very small; XXL= extremely large

Webfigure 3. Associations of metabolic biomarkers with risk of incident type 2 diabetes



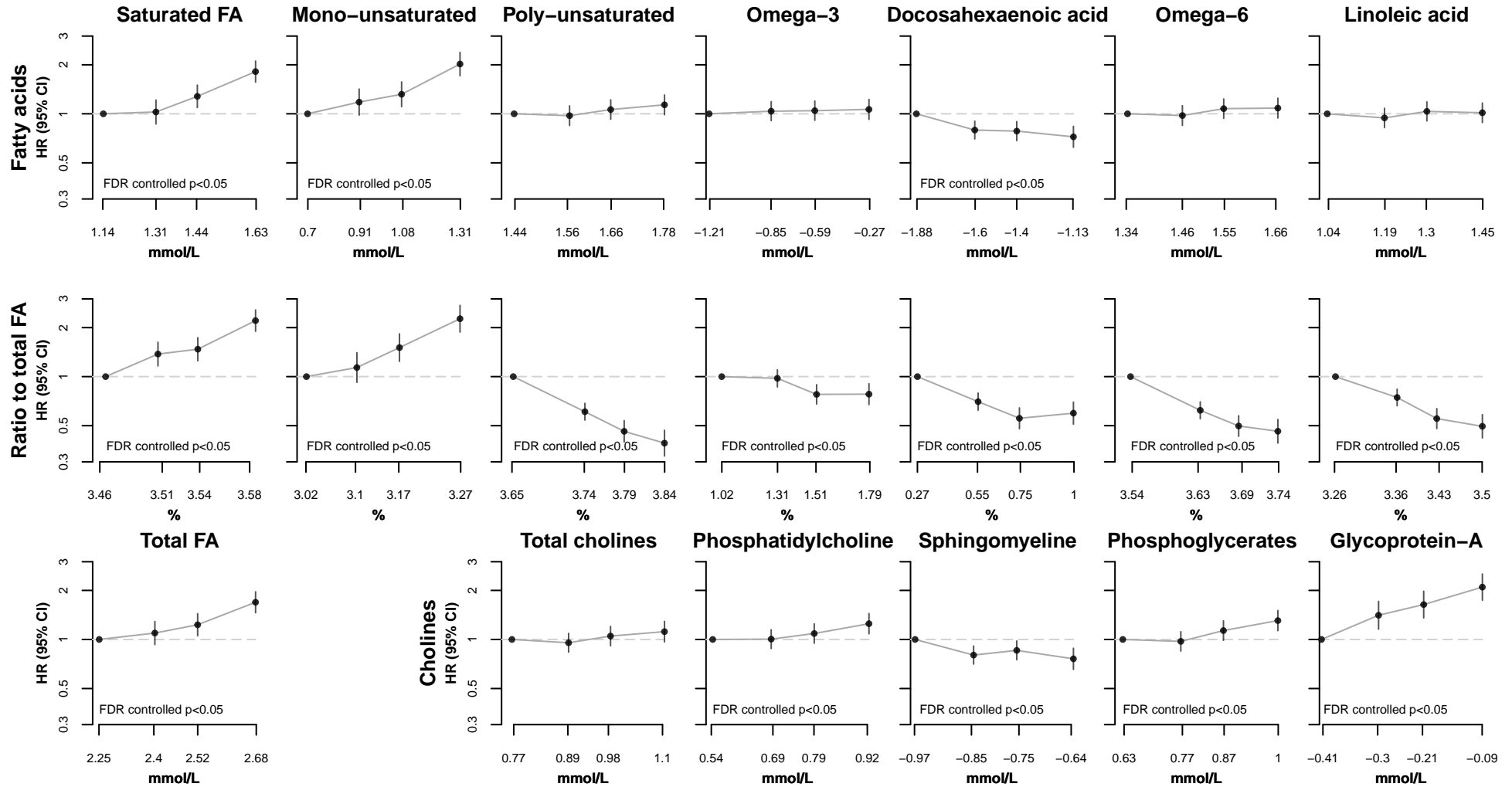
Hazard ratios (HR) stratified by age-at-risk and sex and adjusted for assessment centre, Townsend deprivation index, smoking, alcohol drinking, body mass index, waist-to-hip ratio, fasting duration, and spectrometer. Numbers on the x-axis correspond to median values within each quartile for each metabolic biomarker on the natural log scale. Circles represent the HR and vertical lines indicate the 95% CI. CM= chylomicrons; FA= fatty acids; HDL= high density lipoproteins; IDL= intermediate density lipoproteins; L= large; LDL= low density lipoproteins; M= medium; S= small; VLDL= very low density lipoproteins; XL= very large; XS= very small; XXL= extremely large

Webfigure 3. Associations of metabolic biomarkers with risk of incident type 2 diabetes



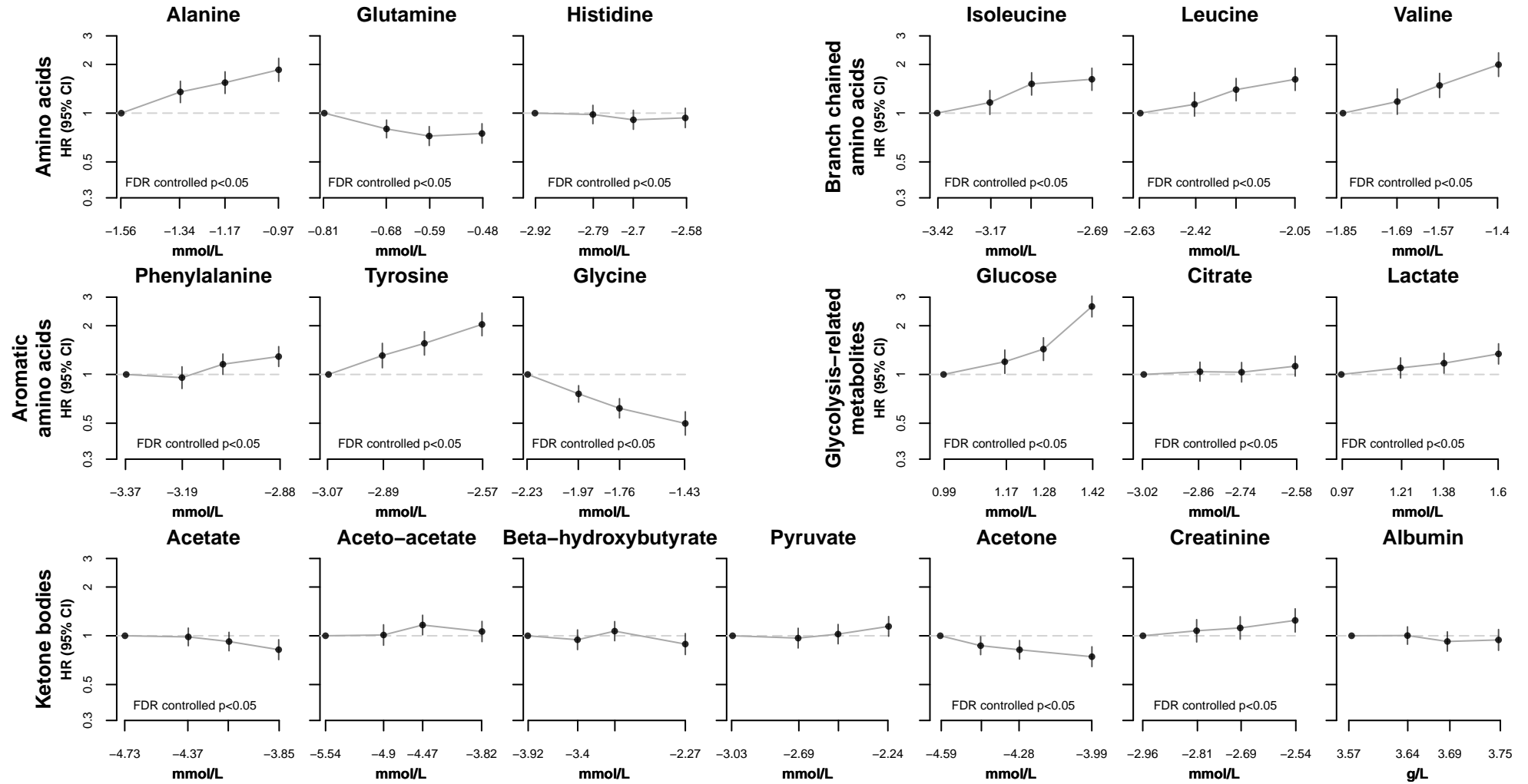
Hazard ratios (HR) stratified by age-at-risk and sex and adjusted for assessment centre, Townsend deprivation index, smoking, alcohol drinking, body mass index, waist-to-hip ratio, fasting duration, and spectrometer. Numbers on the x-axis correspond to median values within each quartile for each metabolic biomarker on the natural log scale. Circles represent the HR and vertical lines indicate the 95% CI. CM= chylomicrons; FA= fatty acids; HDL= high density lipoproteins; IDL= intermediate density lipoproteins; L= large; LDL= low density lipoproteins; M= medium; S= small; VLDL= very low density lipoproteins; XL= very large; XS= very small; XXL= extremely large

Webfigure 3. Associations of metabolic biomarkers with risk of incident type 2 diabetes



Hazard ratios (HR) stratified by age-at-risk and sex and adjusted for assessment centre, Townsend deprivation index, smoking, alcohol drinking, body mass index, waist-to-hip ratio, fasting duration, and spectrometer. Numbers on the x-axis correspond to median values within each quartile for each metabolic biomarker on the natural log scale. Circles represent the HR and vertical lines indicate the 95% CI. CM= chylomicrons; FA= fatty acids; HDL= high density lipoproteins; IDL= intermediate density lipoproteins; L= large; LDL= low density lipoproteins; M= medium; S= small; VLDL= very low density lipoproteins; XL= very large; XS= very small; XXL= extremely large

Webfigure 3. Associations of metabolic biomarkers with risk of incident type 2 diabetes



Hazard ratios (HR) stratified by age-at-risk and sex and adjusted for assessment centre, Townsend deprivation index, smoking, alcohol drinking, body mass index, waist-to-hip ratio, fasting duration, and spectrometer. Numbers on the x-axis correspond to median values within each quartile for each metabolic biomarker on the natural log scale.

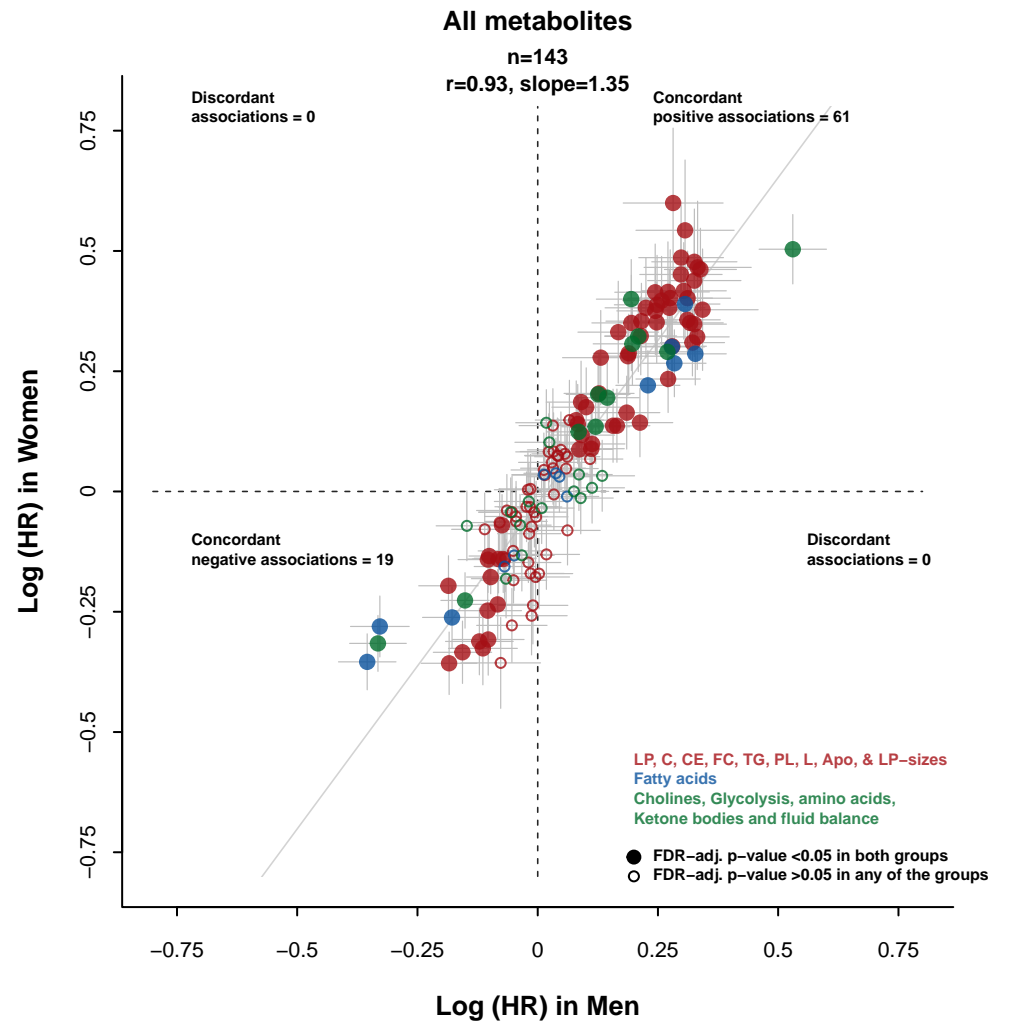
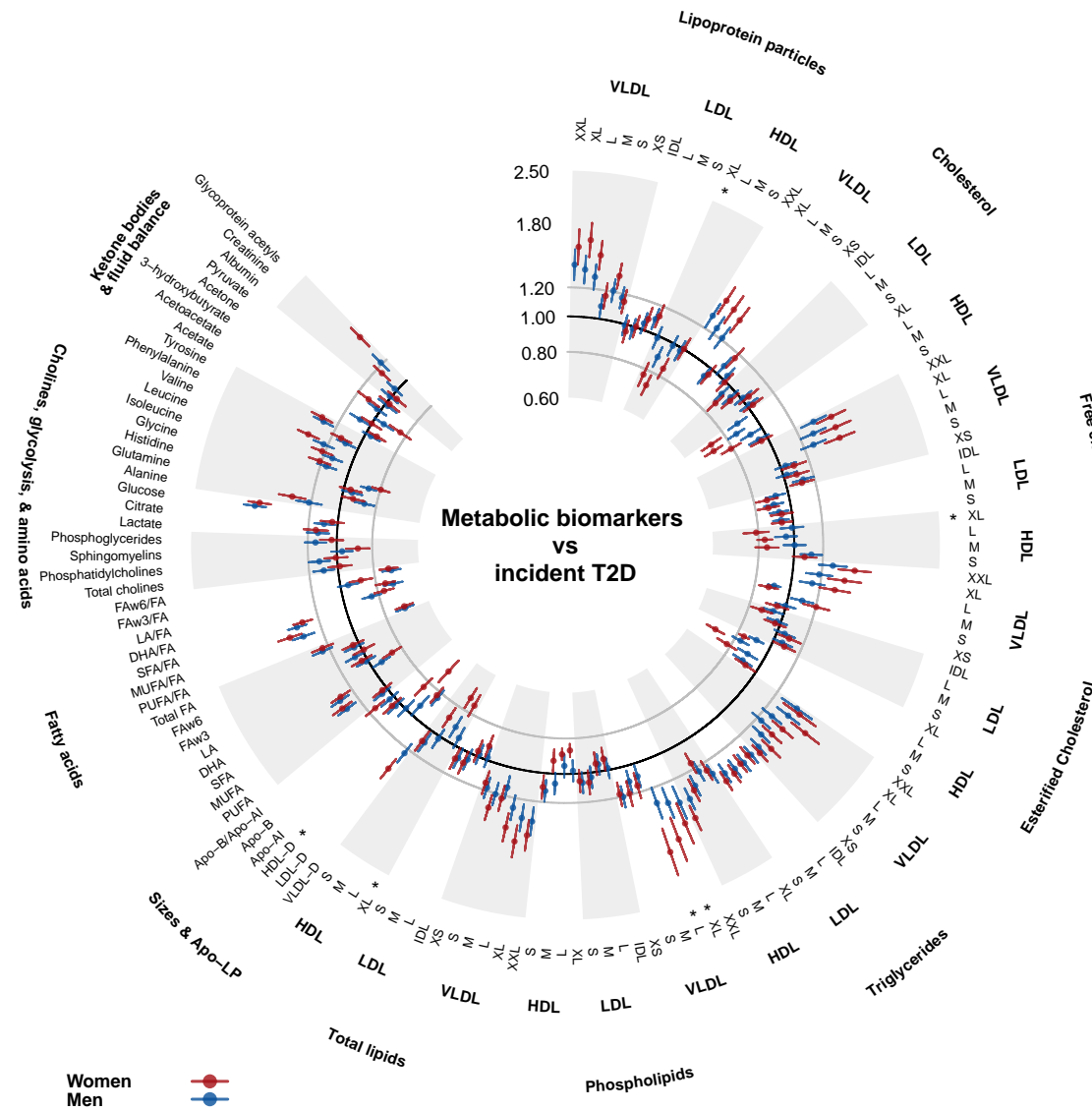
Circles represent the HR and vertical lines indicate the 95% CI.

CM= chylomicrons; FA= fatty acids; HDL= high density lipoproteins; IDL= intermediate density lipoproteins; L= large; LDL= low density lipoproteins; M= medium; S= small; VLDL= very low density lipoproteins; XL= very large; XS= very small; XXL= extremely large

Webfigure 4. Associations of metabolic biomarkers with risk of incident type 2 diabetes by sex

a) HR of incident T2D per 1-SD higher metabolic biomarker on the natural log scale

b) Effect size estimates for incident T2D per 1-SD higher metabolic biomarker on the natural log scale



Hazard ratios (HR) stratified by age-at-risk and adjusted for assessment centre, Townsend deprivation index, smoking, alcohol drinking, body mass index, waist-to-hip ratio, fasting duration and spectrometer

* p for heterogeneity < 0.05 after controlling for false discovery rate

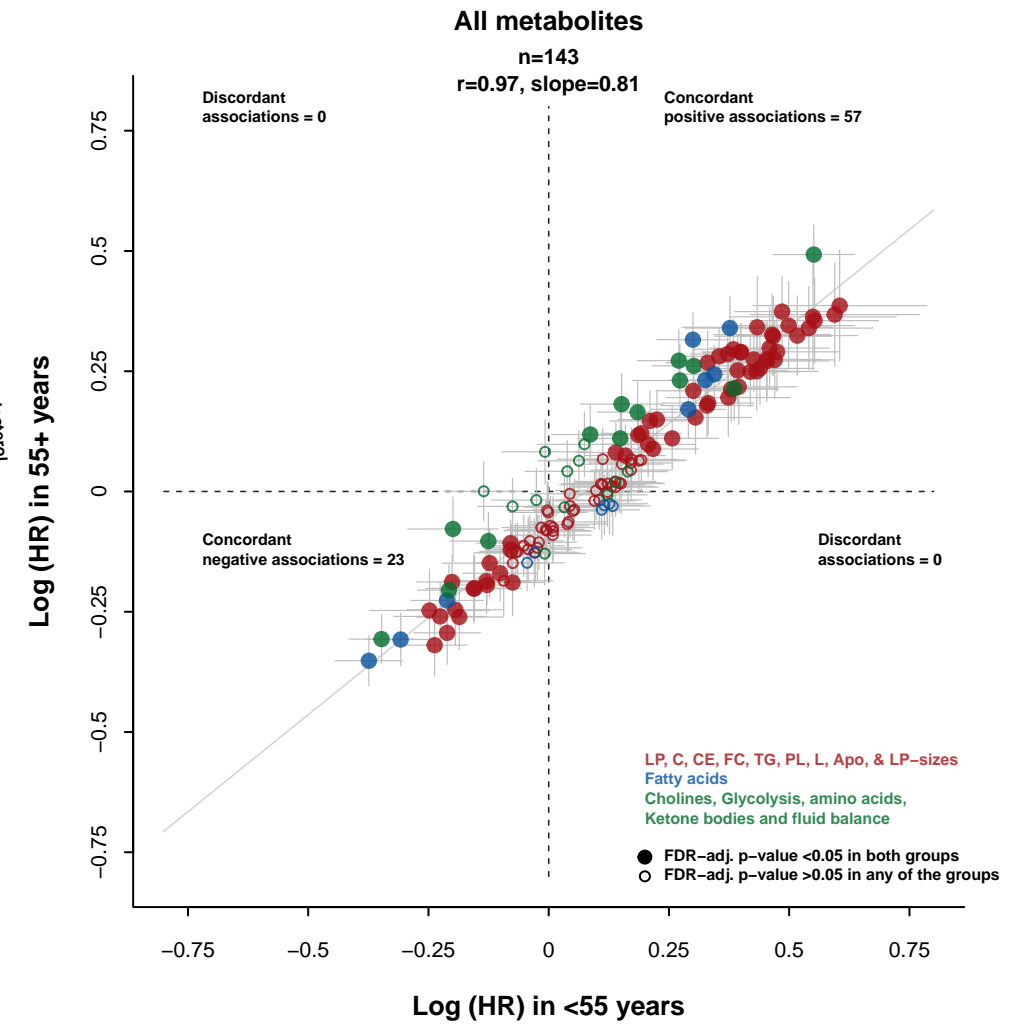
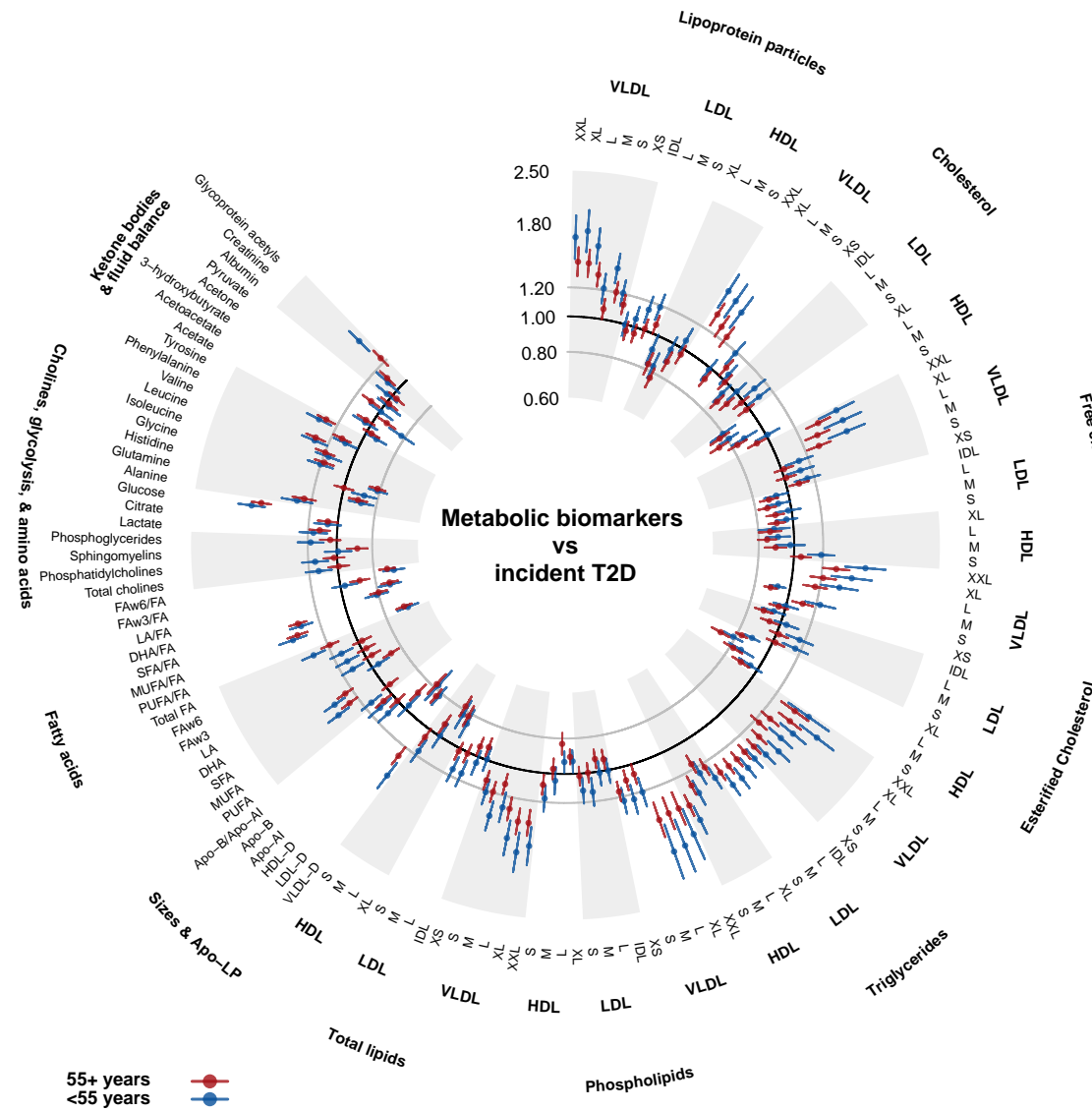
911 men and 808 women developed incident T2D

Apo=apolipoproteins; Apo-A1=apolipoprotein A1; Apo-B=apolipoprotein B; C=cholesterol; CE=esterified cholesterol; DHA=docosahexaenoic acid; FA=fatty acids; FAW3=omega-3 fatty acids; FAW6=omega-6 fatty acids; FC=free cholesterol; FDR=false discovery rate; HDL=high density lipoproteins; HDL-D=high density lipoprotein particle diameter; IDL=intermediate density lipoproteins; L=large; LA=linoleic acid; LDL=low density lipoproteins; LDL-D=low density lipoprotein particle diameter; LP=lipoprotein; M=medium; MUFA=monounsaturated fatty acids; PUFA=polyunsaturated fatty acids; S=small; SFA=saturated fatty acids; T2D=type 2 diabetes; TG=triglycerides; VLDL=very low density lipoproteins; VLDL-D=very low density lipoprotein particle diameter; XL=very large; XS=very small; XXL=extremely large

Webfigure 5. Associations of metabolic biomarkers with risk of incident type 2 diabetes by age

a) HR of incident T2D per 1-SD higher metabolic biomarker on the natural log scale

b) Effect size estimates for incident T2D per 1-SD higher metabolic biomarker on the natural log scale



Hazard ratios (HR) stratified by age-at-risk and adjusted for assessment centre, Townsend deprivation index, smoking, alcohol drinking, body mass index, waist-to-hip ratio, fasting duration and spectrometer

* p for heterogeneity <0.05 after controlling for false discovery rate

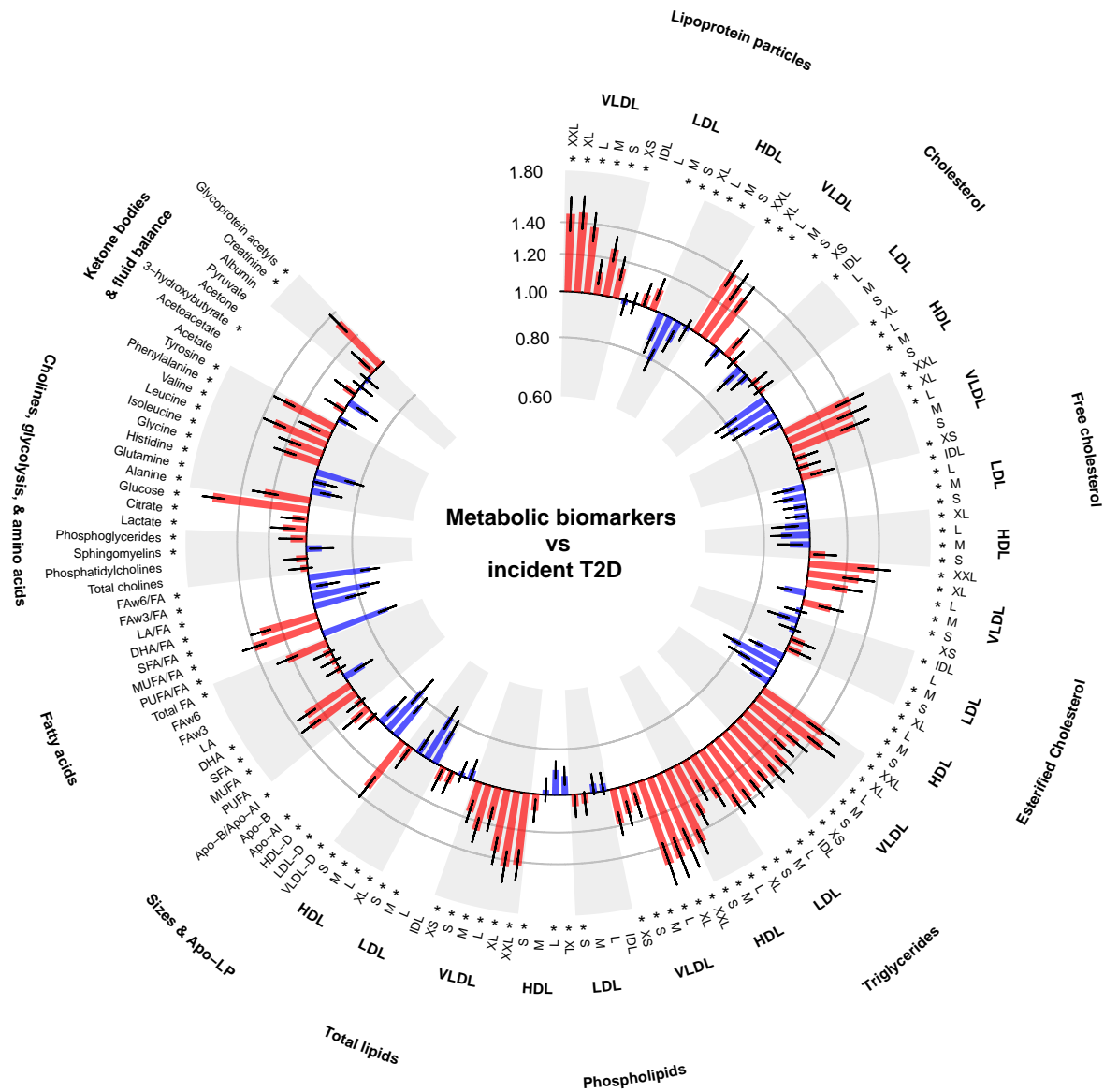
616 participants <55 years at baseline and 1103 participants 55+ years at baseline developed incident T2D

Apo=apolipoproteins; Apo-A1=apolipoprotein A1; Apo-B=apolipoprotein B; C=cholesterol; CE=esterified cholesterol; DHA=docosahexaenoic acid; FA=fatty acids; FAW3=omega-3 fatty acids; FAW6=omega-6 fatty acids; FC=free cholesterol; FDR=false discovery rate; HDL=high density lipoproteins; HDL-D=high density lipoprotein particle diameter; IDL=intermediate density lipoproteins; L=large; LA=linoleic acid; LDL=low density lipoproteins;

LDL-D=low density lipoprotein particle diameter; LP=lipoprotein; M=medium; MUFA=monounsaturated fatty acids; PUFA=polyunsaturated fatty acids; S=small; SFA=saturated fatty acids; T2D=type 2 diabetes; TG=triglycerides;

VLDL=very low density lipoproteins; VLDL-D=very low density lipoprotein particle diameter; XL=very large; XS=very small; XXL=extremely large

Webfigure 6. Associations of metabolic biomarkers with risk of incident type 2 diabetes excluding the first three years of follow-up

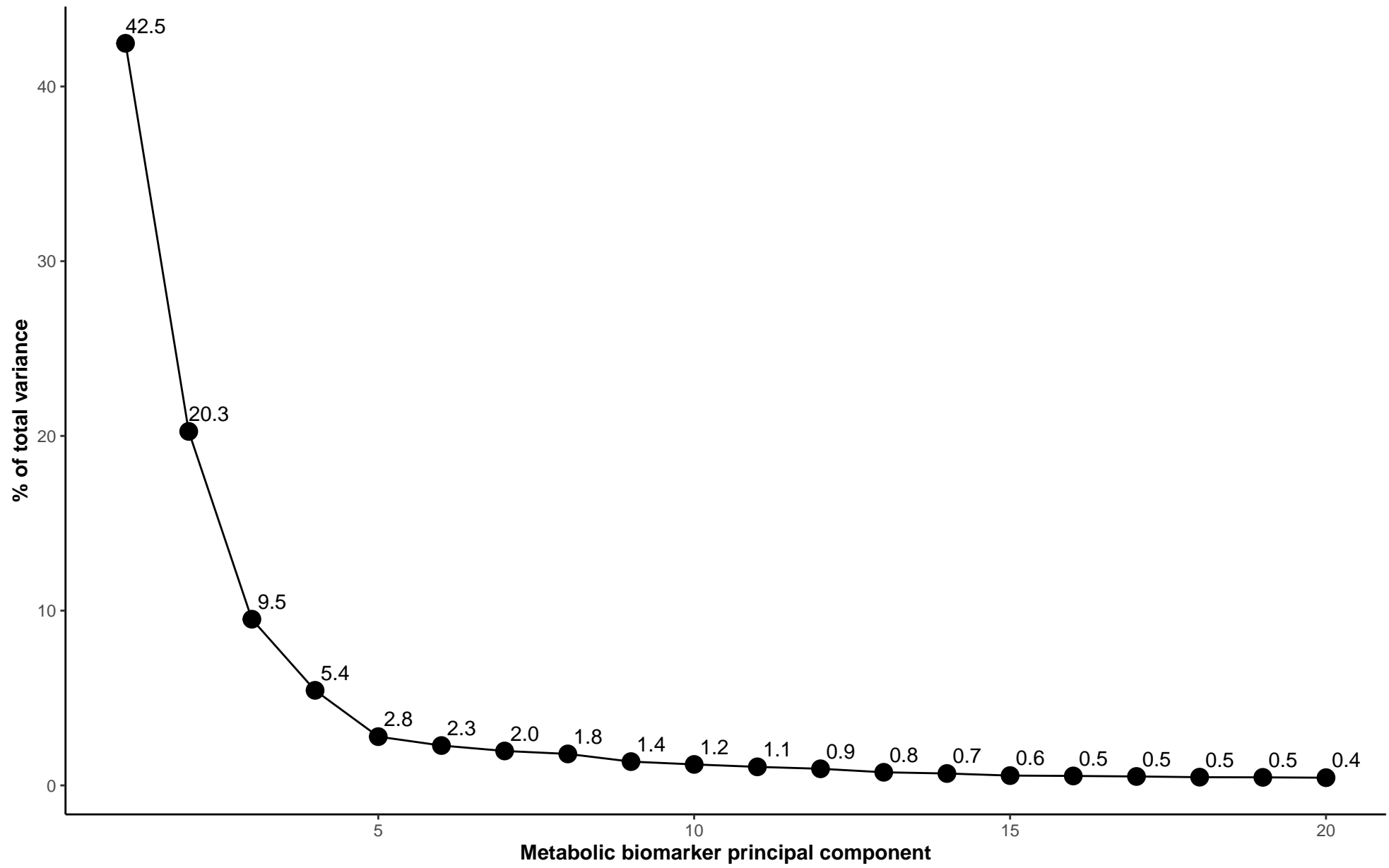


Hazard ratios are presented per 1-SD higher metabolic biomarkers on the natural log scale, stratified by age-at-risk and sex and adjusted for assessment centre, Townsend deprivation index, smoking, alcohol drinking, body mass index, waist-to-hip ratio, fasting duration, and spectrometer

*false discovery rate controlled $p < 0.05$

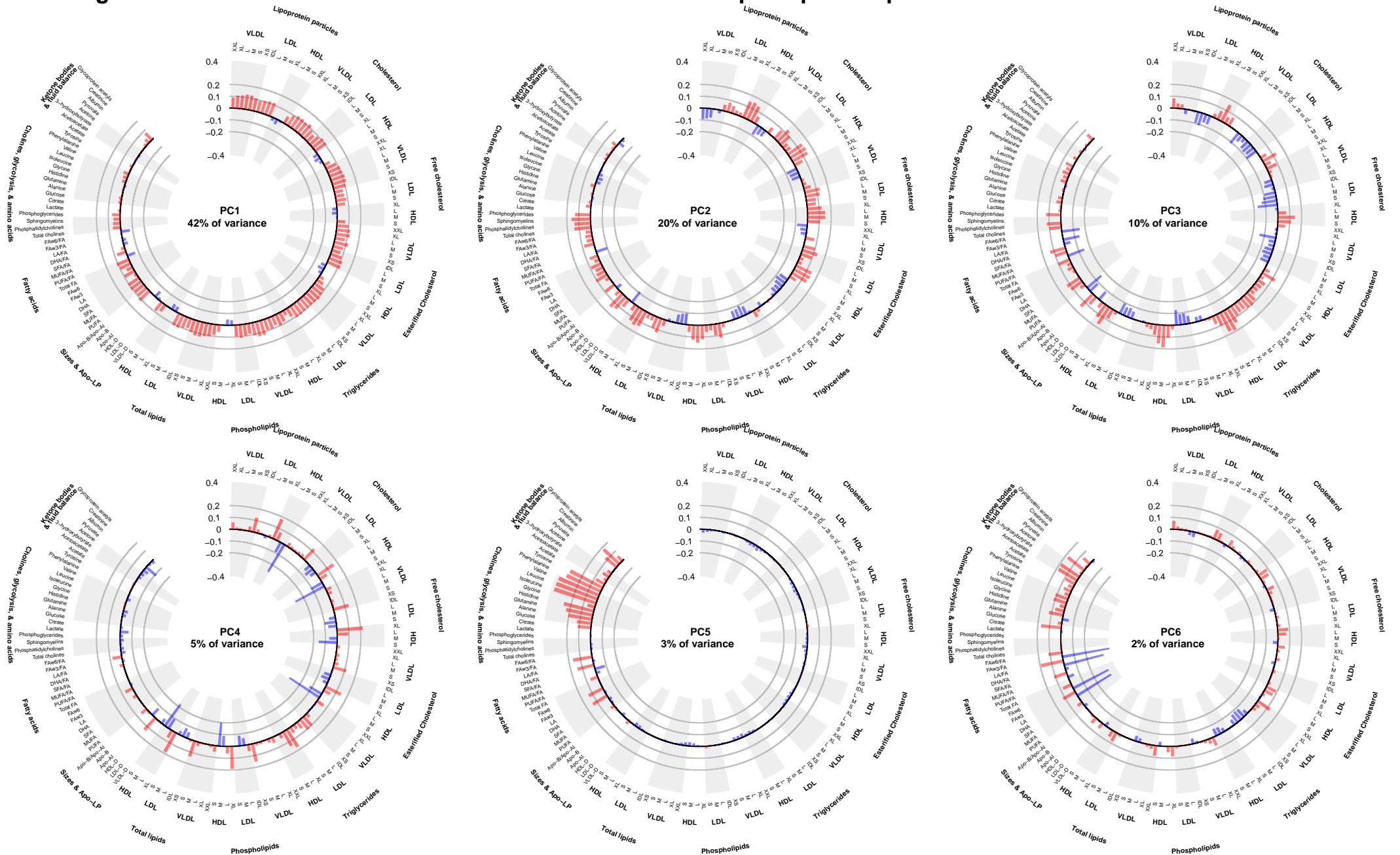
Apo-A1=apolipoprotein A1; Apo-B=apolipoprotein B; DHA=docosahexaenoic acid; FA=fatty acids; FAW3=omega-3 fatty acids; FAW6=omega-6 fatty acids; HDL=high density lipoproteins; HDL-D=high density lipoprotein particle diameter; IDL=intermediate density lipoproteins; L=large; LA=linoleic acid; LDL=low density lipoproteins; LDL-D=low density lipoprotein particle diameter; LP=lipoprotein; M=medium; MUFA=monounsaturated fatty acids; PUFA=polyunsaturated fatty acids; S=small; SFA=saturated fatty acids; T2D=type 2 diabetes; VLDL=very low density lipoproteins; VLDL-D=very low density lipoprotein particle diameter; XL=very large; XS=very small; XXL=extremely large

Webfigure 7. Importance of the first 20 metabolic biomarker principal components



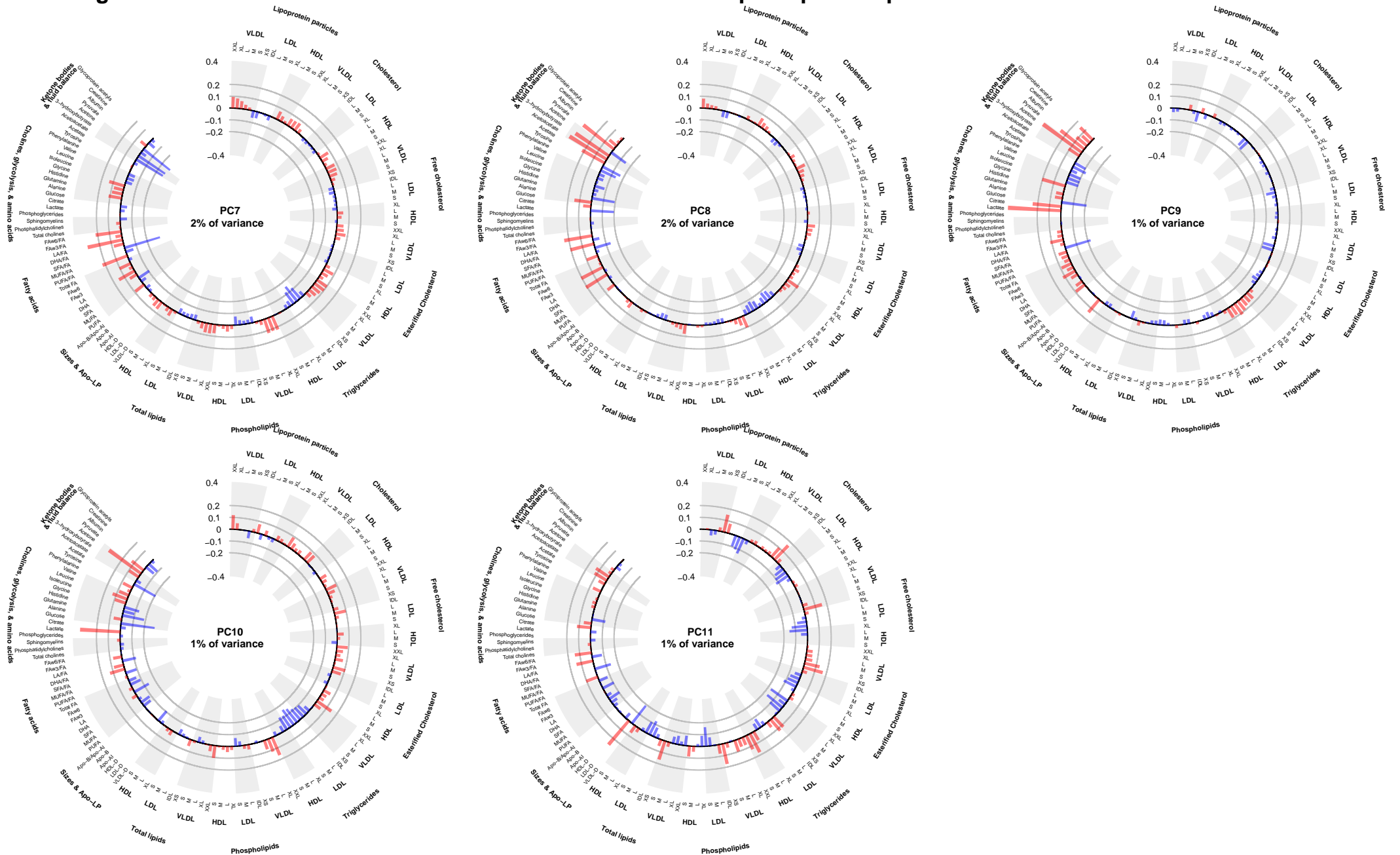
Numbers adjacent to the points are the percentages of total variance in individual biomarkers explained by each principal component.

Webfigure 8. Characterisation of the first 11 metabolic biomarker principal components



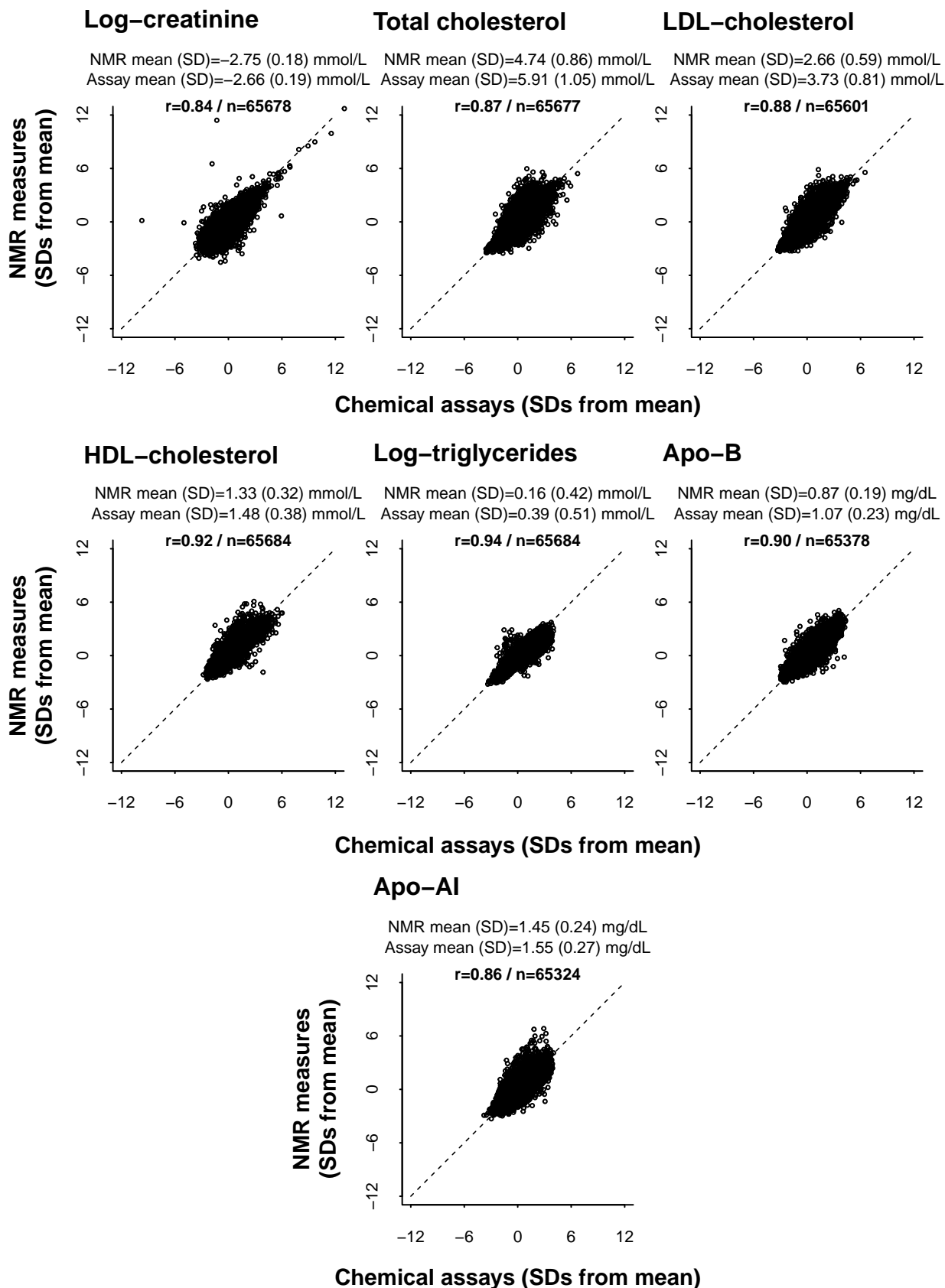
Factor loadings for each principal component are presented, representing the coefficients of the metabolic biomarkers from which each principal component was calculated. The first 6 principal components explain 83 % of the variance. Apo-A1=apolipoprotein A1; Apo-B=apolipoprotein B;DHA=docosahexaenoic acid; FA=fatty acids; Faw3=omega-3 fatty acids; Faw6=omega-6 fatty acids; HDL=high density lipoproteins; HDL-D=high density lipoprotein particle diameter; LDL=intermediate density lipoproteins; L=large; LA=linoleic acid; LDL=low density lipoproteins; LDL-D=low density lipoprotein particle diameter; LP=lipoprotein; M=medium; MUFA=monounsaturated fatty acids; PC1=principal component 1; PC2=principal component 2; PC3=principal component 3; PC4=principal component 4; PC5=principal component 5; PC6=principal component 6; PC7=principal component 7; PC8=principal component 8; PC9=principal component 9; PC10=principal component 10; PC11=principal component 11; PUFA=polyunsaturated fatty acids; S=small; SFA=saturated fatty acids; T2D=type 2 diabetes; VLDL=very low density lipoproteins; VLDL-D=very low density lipoprotein particle diameter; XL=very large; XS=very small; XXL=extremely large

Webfigure 8. Characterisation of the first 11 metabolic biomarker principal components



Factor loadings for each principal component are presented, representing the coefficients of the metabolic biomarkers from which each principal component was calculated. The first 11 principal components explain 90 % of the variance. Apo-A1=apolipoprotein A1; Apo-B=apolipoprotein B; DHA=docosahexaenoic acid; FA=fatty acids; Faw3=omega-3 fatty acids; Faw6=omega-6 fatty acids; HDL=high density lipoproteins; HDL-D=high density lipoprotein particle diameter; LDL=intermediate density lipoproteins; L=large; LA=linoleic acid; LDL=low density lipoproteins; LDL-D=low density lipoprotein particle diameter; LP=lipoprotein; M=medium; MUFA=monounsaturated fatty acids; PC1=principal component 1; PC2=principal component 2; PC3=principal component 3; PC4=principal component 4; PC5=principal component 5; PC6=principal component 6; PC7=principal component 7; PC8=principal component 8; PC9=principal component 9; PC10=principal component 10; PC11=principal component 11; PUFA=polyunsaturated fatty acids; S=small; SFA=saturated fatty acids; T2D=type 2 diabetes; VLDL=very low density lipoproteins; VLDL-D=very low density lipoprotein particle diameter; XL=very large; XS=very small; XXL=extremely large

Webfigure 9. Comparison of biomarkers measured by NMR and routine clinical chemistry assays



Exclusions applied as in Webfigure 1

r = Pearson's correlation coefficient between NMR measures and chemical assays.

Clinical chemistry assays were conducted on serum samples. NMR profiling was conducted on EDTA plasma samples from different aliquots.

For the cholesterol chemical assay, LDL-cholesterol was directly measured using a technique that first solubilises and extracts CM-, VLDL- and HDL-carried cholesterol, and then quantifies the remaining cholesterol carried by both IDL and LDL particles. For NMR measures, LDL-cholesterol corresponds to the sum of all the NMR-derived measures of both esterified and free cholesterol carried by both IDL and LDL particles.

Apo= apolipoprotein; NMR= nuclear magnetic resonance