

1 **Novel Investigation of SARS-CoV-2 in COVID-19 Survivors'**

2 **Semen in Surabaya, Indonesia**

3 **Supardi Supardi,^{1,2} Reviany V. Nidom,^{3,4*} Eni M. Sisca,¹ Jefry A. Tribowo,¹ Patricia S.**
4 **Kandar,¹ Joice M. Budiharto,¹ Eko Siswidiyanto,¹ Maitra Djiang Wen,^{6,7,8} Tiara**
5 **Kirana,⁸ Astria N. Nidom,³ Arif N. M. Ansori,³ Irine Normalina,³ Setyarina Indrasari,^{3,4}**
6 **Reny I'tishom^{1,5}**

7
8 ¹Andrology Specialist Program, Faculty of Medicine, Universitas Airlangga, Surabaya,
9 Indonesia.

10 ²Dr. Soetomo General Hospital, Surabaya, Indonesia.

11 ³Coronavirus and Vaccine Formulation Research Group, Professor Nidom Foundation,
12 Surabaya, Indonesia.

13 ⁴Riset AIRC Indonesia, Surabaya, Indonesia.

14 ⁵Department of Biomedical Science, Faculty of Medicine, Universitas Airlangga, Surabaya,
15 Indonesia.

16 ⁶Wahidin Sudiro Husodo General Hospital, Mojokerto, Indonesia.

17 ⁷Signum Fertility Clinic, Husada Utama Hospital, Surabaya, Indonesia.

18 ⁸Bocah Indonesia, Primaya Hospital, Tangerang, Indonesia.

19

20 Correspondence should be addressed to Reviany V. Nidom; reviany@pnfinstitute.org

21

22 **Abstract**

23

24 The emergence and the widespread of Coronavirus disease 2019 (COVID-19) demands an
25 accurate detection method to establish a diagnosis. Real-time polymerase chain reaction
26 (real-time PCR) is accounted for the perfect point of reference in detecting this virus. The
27 notion that this virus also invades the male reproductive tract requires further investigation to
28 prove the presence of severe acute respiratory syndrome coronavirus-2 (SARS-CoV-2) in the
29 semen. This investigation was designed to detect SARS-CoV-2 in COVID-19 survivors'
30 semen. This study design was a cross-sectional examination and conducted between
31 November 2020 and March 2021 in the Andrology Unit of Dr. Soetomo General Hospital and
32 Professor Nidom Foundation, both located in the City of Surabaya, Indonesia. The sample
33 was 34 male participants aged above 18 years old and had been confirmed COVID-19 by
34 nasopharyngeal swab PCR test. Part of the semen was taken for real-time PCR testing with
35 the QuantStudio 5 Applied Biosystem (AB) PCR machine and the kits utilized were the
36 STANDARD M nCOV Real-Time Detection Kit and mBioCov-19 RT-PCR Kit.
37 Furthermore, the mean of participants' ages was 35.74 years old with 25% of them had had a
38 history of primary infertility and 21.8% of secondary infertility. From the real-time PCR
39 COVID-19 of the semen examination, this investigation found that 27 participants had been
40 negatives (74.4%), six inconclusive (17.6%), and one positive (3%) of SARS CoV-2. In
41 summary, SARS-CoV-2 could be found in the semen of COVID-19 survivors. This should be
42 a concern for the potential impact of COVID-19 in male fertility and the possibility of
43 transmission reproductively.

44

45

46

47

48 **1. Introduction**

49

50 COVID-19 occurs as the result of contagiousness from severe acute respiratory syndrome
51 coronavirus-2 (SARS-CoV-2) spread abruptly and became a global pandemic since
52 December 2019 as the first report of the emergence of this virus in Wuhan [1,2]. As of June
53 2021, there is around 170 million confirmed prevalence of COVID 19 infection globally with
54 more than 3.5 million global deaths. To be specific, Indonesia has about 1.8 million cases and
55 around 50 thousand deaths [1,2,3,4,5]. The involvement of this disease causes a very broad
56 impact and clinical manifestations that vary, ranging from asymptomatic to systemic
57 dysfunction [6,7]. Furthermore, SARS-CoV-2 involves angiotensin II converting enzymes
58 (ACE2) as a receptor for entering into the cells. This expression of ACE 2 is found in the
59 intestine, kidney, and testicle [8]. Although ACE2 expression is present in the testes, the
60 direct involvement of SARS-CoV-2 infection in the testes or male genital tract is still in
61 question [9].

62 Various testing approaches were developed to detect this virus. An accurate and fast
63 detection method is needed as part of preventive and curative efforts [10]. Until recently,
64 three types of diagnostic tests have been developed, namely reverse transcription-polymerase
65 chain reaction (RT-PCR) assay, antibody detection and tissue culture isolation [11]. The most
66 highly recommended, which puts a highly accurate benchmark, uses a nucleic acid-based
67 approach such as the polymerase chain reaction (PCR) method as it has rapid, sensitive, and
68 specific virus detection capabilities, even PCR can detect early SARS-CoV-2 infection. PCR
69 analysis utilizes specimens generated from saliva; the swabbing activity of nasal, trachea and
70 nasopharyngeal; tissues of lungs; blood; semen; and even; excrement. [12,13]. The extraction
71 process of ribonucleic acid (RNA) in the specimen starts from the purification process of
72 total RNA into viral RNA and host RNA, then continued by reversed transcription into the
73 complementary DNA (cDNA) and followed by amplification using the polymerization of
74 chain reaction which is the foundation of real time reverse transcription-polymerase chain
75 reaction (rRT-PCR) examination. [14]. Although rRT-PCR is the most widely used and
76 recommended as the barometer of SARS COV-2 diagnostics, it also has drawbacks. Errors in
77 the preparation, analysis, and interpretation stages will give false positive or false negative or
78 inconclusive rRT-PCR results [15,16].

79 Unlike rRT-PCR examination of nasopharyngeal specimens which is routinely performed,
80 the use of rRT-PCR in semen specimens is still limited and is more for research purposes.
81 There were various studies discussing COVID-19 rRT-PCR in semen [11,13,15,16,17].
82 Among these various studies, only two studies detected SARS-CoV-2 in the semen [18,19].
83 Therefore, this investigation was the novel finding in Indonesia to examine the semen of male
84 COVID-19 survivors using rRT-PCR test method to confirm whether SARS-COV-2 was
85 found in the men reproductive tract of the survivors.

86

87 **2. Materials and Methods**

88

89 *2.1. Design study and participants.* This research is a cross-sectional examination. This
90 investigation was conducted between November 2020 and March 2021 in the Andrology Unit
91 of Dr. Soetomo Regional Hospital and in the Professor Nidom Foundation, both located in
92 Surabaya, Indonesia. A total of 34 male participants were registered as research subjects.
93 Inclusion criteria were males older than 18 years old, had been confirmed COVID-19 by
94 nasopharyngeal PCR test, and already in the recovery phase. This research was ethically
95 evaluated with an ethical exemption with the reference number of
96 274/EC/KEPK/FKUA/2020 from the Faculty of Medicine, Universitas Airlangga.



97
98
99
100
101

Figure 1. Location of the Study. This study conducted in the Andrology Unit, Dr. Soetomo Regional Hospital Surabaya and Professor Nidom Foundation, Surabaya, Indonesia.

102
103
104
105
106
107
108
109
110
111
112
113
114
115
116
117
118
119
120
121
122
123
124
125

2.2. Data collection. This investigation performed historical consideration and semen analysis on the participants who met the inclusion criteria. Participants were then instructed to abstinance 2-7 days and wash their hands before doing masturbation for the semen collection.

2.3. Real-Time PCR. The examination was implemented using RT-PCR with QuantStudio 5 Applied Biosystem (AB) PCR machine, the kit applied was STANDARD M nCOV Real-Time Detection Kit (Lot #MNCO0120026) and MBioCoV-19 RT-PCR Kit (Lot # 6900820) carried out at the Research Group of Coronavirus and Vaccine Formulation, at Professor Nidom Foundation, Surabaya, Indonesia. This investigation utilized a kit based on Taqman probe real time fluorescent PCR technology. The foundation of PCR examination was the transcription of coronavirus RNA into cDNA by reverse transcriptase as the first step, then cDNA was employed as a framework for PCR amplification.

PCR reaction simultaneously applied activities of polymerase such as DNA polymerase and exo-nuclease. The detachment of both fluorophore and quencher along with the activity of dicer, which has the capability to discredit the TaqMan probe, provoke the instrument to indicate the signal of fluorescence; for example, new coronavirus ORP1ab (RdRp) gene was detected by FAM channel qualitative, coronavirus E gene was identified by JOE (VIC or HEX) channel qualitative indication, and internal reference was recognized by CY5 channel detection. In preventing the contamination of amplification products, dUTP and UNG enzymes were employed by this kit. Positive criteria were detected if 2 gene (E and RdRP) ≤ 36 . If the results only found in E gene ≤ 36 , it meant that the inconclusive. Negative criteria are E and RdRP not detected.

Moreover, PCR examination was carried out in two stages. In the first stage, PCR examination of semen sample code 1-15 was performed on January, 2021 and in the second

126 stage, PCR for semen sample code 16-34 was implemented on March, 2021. Before the rRT
127 PCR examination was conducted, the specimens were stored in a refrigerator at 4°C.

128 *2.4. Statistical analysis.* The data from anamnesis and the interpretation of PCR results that
129 had been collected were analyzed and grouped by demographics, the rRT-PCR results, the
130 rRT-PCR results based on the degree of symptoms, the duration of time between
131 nasopharyngeal PCR and semen PCR, and lastly, the symptoms.

132

133 **3. Results**

134

135 In this investigation, the rate of male COVID-19 survivors' age was 37.60 ± 7.834 , while for
136 their spouses was 37.44 ± 5.525 . The average duration of marriage was 9.11 years with 90% of
137 them were married. Furthermore, the primary infertility rate was 44.4%, and, for secondary
138 infertility, it was 22.2% (Table 1). In the results of real-time PCR COVID-19 in the semen, it
139 was found that 27 participants were negative (74.4%), 6 participants were inconclusive
140 (17.6%), and 1 participant was positive (3%) (Table 2 and Figure 1).

141 Meanwhile, rRT-PCR examinations based on the degree of COVID-19 symptoms were
142 classified into 4 groups, they were asymptomatic with negative semen rRT-PCR result in 13
143 participants (38.23%), asymptomatic COVID-19 with positive semen rRT-PCR result in 1
144 participant (2.94%), mild symptoms with negative semen rRT-PCR result in 11 participants
145 (32.35%), mild symptoms with inconclusive semen rRT-PCR result in 6 participants
146 (17.64%), and moderate symptoms with negative semen rRT-PCR result in 3 participants
147 (8.82%) (Table 3 and Figure 2).

148 Furthermore, the average of interval duration between positive or inconclusive rRT for
149 nasopharyngeal PCR and rRT for semen PCR with positive or inconclusive results was
150 113.28 days. The fastest interval duration between positive and inconclusive nasopharyngeal
151 PCR and semen PCR was 53 days, while the longest interval duration to produce positive or
152 inconclusive PCR was 186 days (Table 4).

153 Based on the severity classification of COVID-19 according to WHO [18], this study
154 distributed the symptoms of COVID 19 into asymptomatic, mild, moderate and severe
155 COVID 19 (Table 5). There were not any participants in this study who had a severe
156 symptom of COVID-19.

157

158 Table 1: Demographic Characteristics of Participants

Variable	
Total participants (n)	10
Mean age	37.60 ± 7.834
Mean couples age	37.44 ± 5.525
Mean marriage duration	9.11
Marital Status	
Married	9 (90%)
Not Married	1 (10%)
Primary Infertility	
Yes	4 (44.4%)
No	5 (55.6%)
Secondary Infertility	
Yes	2 (22.2%)
No	7 (77.8%)

159

160

161 Table 2: Semen rRT-PCR Results.

Code	E	RdRP	IC	Interpretation
S1	-	-	23.91	Negative
S2	-	-	21.11	Negative
S3	-	-	26.07	Negative
S4	-	-	21.24	Negative
S5	-	-	20.21	Negative
S6	-	-	20.49	Negative
S7	-	-	21.95	Negative
S8	-	-	25.59	Negative
S9	-	-	22.87	Negative
S10	32.64	36.16	23.31	Positive
S11	-	-	26.58	Negative
S12	-	-	27.96	Negative
S13	-	-	25.29	Negative
S14	-	-	24,23	Negative
S15	-	-	26.41	Negative
S16	-	-	26.88	Negative
S17	-	-	19.35	Negative
S18	-	-	21.11	Negative
S19	-	35.86	21.57	Inconclusive
S20	-	-	22.9	Negative
S21	-	35.99	20.47	Inconclusive
S22	33.77	42.62	19.36	Inconclusive
S23	-	35.64	23.78	Inconclusive
S24	-	34.99	17.52	Inconclusive
S25	-	27.65	21.19	Inconclusive
S26	-	-	24.51	Negative
S27	-	-	24.05	Negative
S28	-	-	26.45	Negative
S29	-	-	27.47	Negative
S30	-	-	23.5	Negative
S31	-	-	25.33	Negative
S32	-	-	24.43	Negative

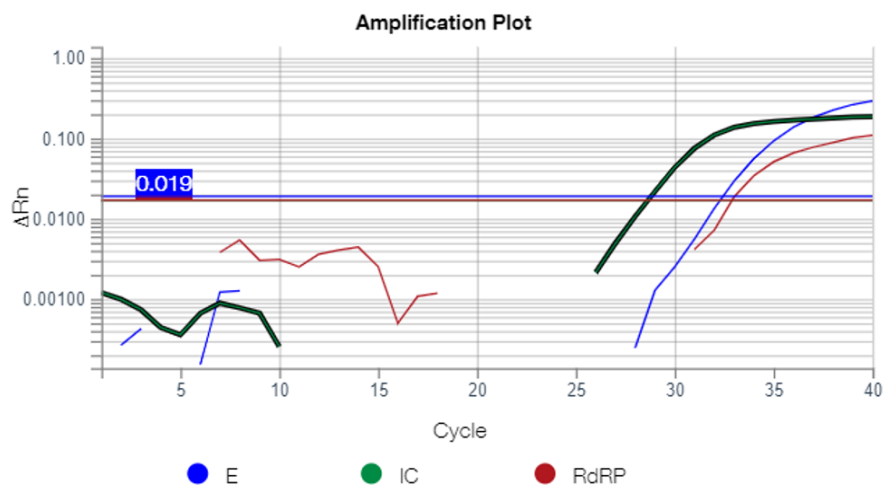
S33	-	-	24.91	Negative
S34	-	-	26.86	Negative

162

163 Table 3: Interval Duration of rRT-PCR Examination in Nasopharyngeal and Semen

Sample	rRT PCR Semen (n = 7)	rRT PCR Nasopharyngeal	Interval Duration
S10	Positive	Positive	121 days
S19	Inconclusive	Positive	177 days
S21	Inconclusive	Positive	126 days
S22	Inconclusive	Positive	59 days
S23	Inconclusive	Positive	186 days
S24	Inconclusive	Positive	53 days
S25	Inconclusive	Positive	71 days
Total			793 days
Mean			113.28 days

164



165

166 Figure 2. rRT-PCR of S10 with IC: 23.31.

167

168 Table 4. Distribution of PCR results based on disease severity.

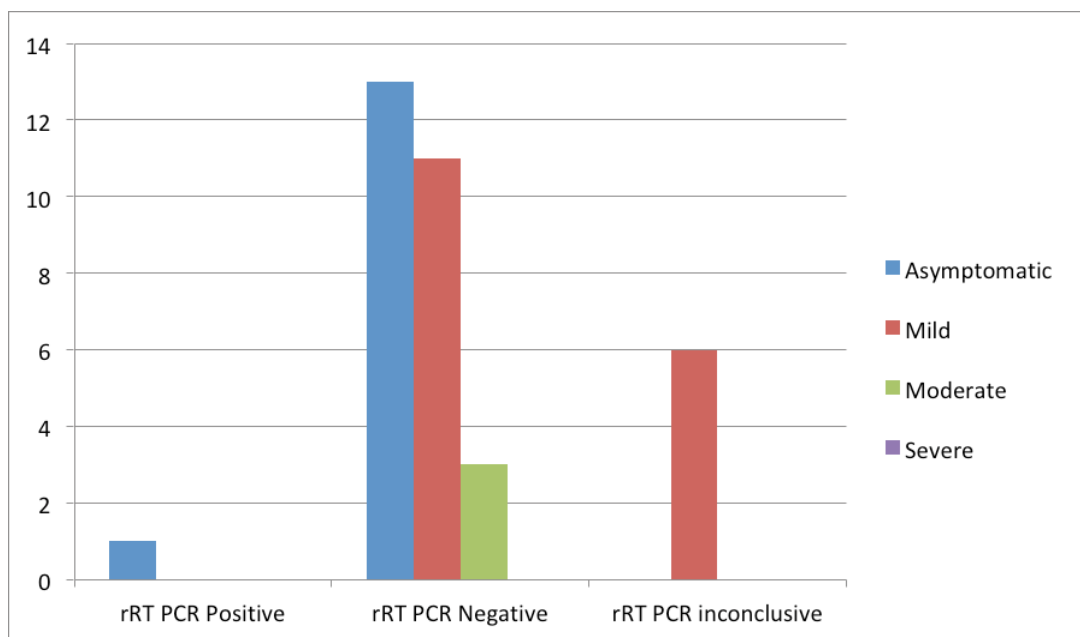
169

COVID-19 Symptoms	Asymptomatic (n=14)	Mild (n= 20)	Moderate	Severe
Semen rRT-PCR				
rRT-PCR Negative	13 (38.23%)	11 (32.35%)	3 (8.82%)	NA
rRT-PCR Positive	1 (2.94%)	0	0	NA
rRT-PCR Inconclusive	0	6 (17.64%)	0	NA
Total	14 (41.17%)	17 (50%)	3 (8.82%)	NA

170

NA: Not Available

171



172
173 Figure 3: Distribution of rRT-PCR results based on disease severity

174
175 Table 5: COVID-19 symptoms of participants

Symptoms	Total (n=34)
Asymptomatic	14 (41.18%)
Mild	
Anosmia	8 (23.53%)
Hypogeusia	1 (2.94%)
Flu-like Syndrome (fever, cough, cold, and sore throat)	10 (29.41%)
Gastrointestinal Symptoms (vomit and diarrhea)	2 (5.88%)
Insomnia	1 (2.94%)
Orchitis	1 (2.94%)
Moderate	
Shortness of Breath	3 (8.82%)
Pneumonia on Chest X-ray	3 (8.82%)

176
177 **4. Discussion**
178

179 In this examination, as the mean of participants' age was 37.7 years, the oldest was about
180 50's years old and the youngest was about 20's years old. Most of the participators were
181 sexually active and had children. Age is one of the prognostic factors of participants infected

182 with COVID-19, as the older is the age, the greater is the possible risk of worsening
183 symptoms [20,21,22].

184 Meanwhile, the results of the semen PCR in this examination were inconclusive for 6
185 participants (17.6%). In Gacci *et al.* (2021) research, they revealed one participant was
186 inconclusive [18], while the study of Bhattacharya *et al.* (2020) stated that the results of rRT
187 nasopharyngeal swab were inconclusive around 5%. There are several factors that affect the
188 inconclusive PCR results from the virologic perspective; due to RNA extraction errors,
189 inadequate sample quality (internal housekeeping genes were not detected in RT-PCR), other
190 beta corona virus infections, very early or late stage of infection, differences in analytic
191 sensitivity in E and S gene or RdRP, distinction in the specificity of screening and confirming
192 gene PCRs. In addition, it can be caused as well because of the improper preanalytical stage
193 in the form of sampling and no cold chain provision leading to RNA degradation, poor
194 quality of transporter medium, poor storage space, and lack of amplification in internal
195 control or housekeeping genes [23].

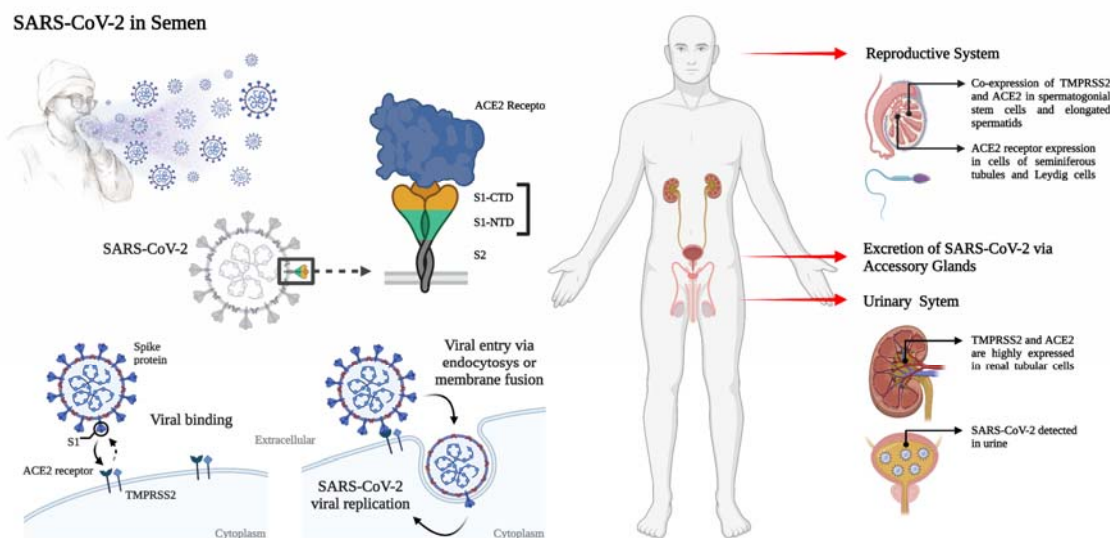
196 Correspondingly, there was only one participant with positive semen rRT-PCR in this study.
197 The time span between positive nasopharyngeal rRT-PCR and positive semen rRT-PCR in
198 this participant was 121 days. This participant was about 30's years old, married, and had 2
199 children. He had asymptomatic on COVID-19 and no history of any systematic disease. He
200 had central obesity according to the Asian-Pacific criteria [24].

201 Furthermore, Li et al (2020) stated that SARS COV-2 was found in semen in two positive
202 participants based rRT PCR examination in the recovery phase, while other 4 participants
203 were detected positive in the semen during the acute phase. In this study, the discovery of one
204 participant who was positive for SARS COV-2 in the semen has similarities with the study of
205 Gacci *et al.* (2021) where there was only one participant who was positive for SARS COV-2
206 in the semen, but when the nasopharyngeal PCR test was evaluated, the results were negative
207 [18]. Whereas in this investigation, a nasopharyngeal PCR for reevaluation was not
208 performed on this patient.

209 Additionally, one participant in this study complained on the testicular pain at initial
210 symptom onset. In other study, it was found there were 6 cases of orchitis from the autopsy of
211 SARS patients [25]. This spread in the reproductive tract is probably related to viral loads in
212 the body and related to the infectious process (Figure 3 and Figure 4) [26].

213 Since most of the participants were detected negative for semen PCR (74.4%), this was
214 probably because the recruited participants had already passed the recovery phase.
215 Furthermore, the results of rRT PCR were more often negative because there was only <1%
216 chance of detecting positivity in the semen [15,16].

217 Finally, the weakness in this current investigation was that the transport of the samples did
218 not use a cold chain box, thus, there was an opportunity for errors occurring at the pre-
219 analytic stage. This PCR examination was not examined when the sample first received,
220 instead it was stored in the refrigerator for several days. Participants with positive PCR
221 results in semen were no longer confirmed by nasopharyngeal PCR, therefore, it was not
222 known whether there was a recurrent positive.



223

224

Figure 4: Feasible scenarios and viral entry action for SARS-CoV-2 in semen. Infection of this virus is dependent on both TMPRSS2 and ACE2 expression for the entry into the host cell. This figure created with BioRender.

226

227

228

5. Conclusions

229

In summary, SARS-CoV-2 could be found in the semen of COVID-19 survivors. It should be noted that PCR is influenced by preanalytical, analytical, and interpretive circumstances. The SARS-CoV-2 existence in the semen sample requires to be further evaluated in future study, as this could be a concern for the consequences of COVID-19 on male fertility status and the possibility of sexual transmission.

232

233

234

235

Data Availability

236

The utilized data to contribute in this investigation are available from the corresponding author on reasonable request.

237

238

239

Conflicts of Interest

240

The authors declare that there is not any conflict of interest in this study.

241

242

Acknowledgments

243

The authors would like to convey gratitude to all employees at the Andrology Unit, Dr. Soetomo Regional Hospital Surabaya and the Department of Biomedical Science in the Faculty of Medicine of Universitas Airlangga, specifically to all participants, colleagues, and acquaintances contributed in this study for their tremendous assistance to complete this investigation. This research was fully supported by Universitas Airlangga's grant for COVID-19 Research (Grant Number: 664/UN.3.14/PT/2020) and the Professor Nidom Foundation, Surabaya, Indonesia (Grant Number: 006/PNF-RF/10/2020).

248

249

250

251

References

252

[1] Nidom RV, Indrasari S, Normalina I, Nidom AN, Afifah B, Dewi L, Putra AK, Ansori ANM, Kusala MKJ, Alamudi MY, Nidom CA. An updated investigation prior to COVID-19 vaccination program in Indonesia: Full-length genome mutation analysis of SARS-CoV-2. bioRxiv. 2021.

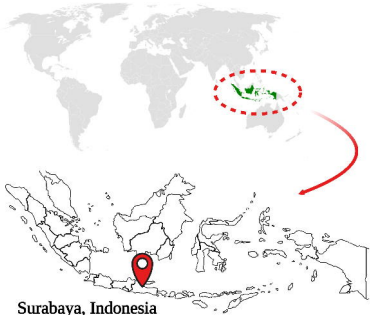
253

254

255

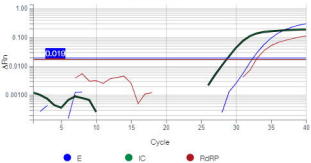
- 256 [2] Ansori ANM, Nidom RV, Kusala MKJ, Indrasari S, Normalina I, Nidom AN, Afifah B,
257 Sari KB, Ramadhaniyah NL, Alamudi MY, Cahyaningsih U, Santoso KP, Kuswanto H,
258 Nidom CA. Viroinformatics investigation of B-cell epitope conserved region in SARS-
259 CoV-2 lineage B. 1.1. 7 isolates originated from Indonesia to develop vaccine candidate
260 against COVID-19. *J Pharm Pharmacogn Res.* 2021; 9(6): 766-779.
- 261 [3] Normalina I, Indrasari S, Nidom RV, Kusala MKJ, Alamudi MY, Santoso KP,
262 Rachmawati K, Nidom CA. Characterization of the spike glycoprotein and construction
263 of an epitope-based vaccine candidate against Indonesian SARS-CoV-2: *In silico* study.
264 *Sys Rev Pharm.* 2020; 11(7): 404-413.
- 265 [4] Nidom RV, Indrasari S, Normalina I, Kusala MKJ, Ansori ANM, Nidom CA.
266 Investigation of the D614G mutation and antibody-dependent enhancement sequences in
267 Indonesian SARS-CoV-2 isolates and comparison to southeast Asian isolates. *Sys Rev*
268 *Pharm.* 2020; 11(8), 203-213.
- 269 [5] Nidom RV, Ansori ANM, Indrasari S, Normalina I, Kusala MKJ, Saefuddin A, Nidom
270 CA. Recent updates on COVID-19 vaccine platforms and its immunological aspects: A
271 review. *Sys Rev Pharm.* 2020; 11(10): 807-818.
- 272 [6] Ansori ANM, Kusala MKJ, Normalina I, Indrasari S, Alamudi MY, Santoso KP,
273 Rachmawati K, Nidom CA. Immunoinformatic investigation of three structural protein
274 genes in Indonesian SARS-CoV-2 isolates. *Sys Rev Pharm.* 2020; 11(7): 422-434.
- 275 [7] Zaim S, Chong JH, Sankaranarayanan V, Harky A. COVID-19 and multiorgan response.
276 *Curr Probl Cardiol.* 2020; 45(8): 100618.
- 277 [8] Paoli D, Pallotti F, Colangelo S, Basilico F, Mazzuti L, Turriziani O, Antonelli G, Lenzi
278 A, Lombardo F. Study of SARS-CoV-2 in semen and urine samples of a volunteer with
279 positive naso-pharyngeal swab. *J Endocrinol Invest.* 2020; 43(12): 1819-1822.
- 280 [9] Hu Z, Song C, Xu C, Jin G, Chen Y, Xu X, Ma H, Chen W, Lin Y, Zheng Y, Wang J,
281 Hu Z, Yi Y, Shen H. Clinical characteristics of 24 asymptomatic infections with
282 COVID-19 screened among close contacts in Nanjing, China. *Sci China Life Sci.* 2020;
283 63(5): 706-711.
- 284 [10] Tahamtan A, Ardebili A. Real-time RT-PCR in COVID-19 detection: Issues affecting
285 the results. *Expert Rev Mol Diagn.* 2020; 20(5): 453-454.
- 286 [11] Emery SL, Erdman DD, Bowen MD, Newton BR, Winchell JM, Meyer RF, Tong S,
287 Cook BT, Holloway BP, McCaustland KA, Rota PA, Bankamp B, Lowe LE, Ksiazek
288 TG, Bellini WJ, Anderson LJ. Real-time reverse transcription-polymerase chain reaction
289 assay for SARS-associated coronavirus. *Emerg Infect Dis.* 2004; 10(2): 311-6.
- 290 [12] Nascimento Junior JAC, Santos AM, Oliveira AMS, Guimarães AG, Quintans-Júnior LJ,
291 Coutinho HDM, Martins N, Borges LP, Serafini MR. Trends in MERS-CoV, SARS-
292 CoV, and SARS-CoV-2 (COVID-19) diagnosis strategies: A patent review. *Front Public*
293 *Health.* 2020; 8: 563095.
- 294 [13] Paoli D, Pallotti F, Nigro G, Mazzuti L, Hirsch MN, Valli MB, Colangelo S, Mastroianni
295 CM, Antonelli G, Lenzi A, Turriziani O, Lombardo F. Molecular diagnosis of SARS-
296 CoV-2 in seminal fluid. *J Endocrinol Invest.* 2021: 1-10.
- 297 [14] Weissleder R, Lee H, Ko J, Pittet MJ. COVID-19 diagnostics in context. *Sci Transl Med.*
298 2020; 12(546): eabc1931.
- 299 [15] Lippi G, Simundic AM, Plebani M. Potential preanalytical and analytical vulnerabilities
300 in the laboratory diagnosis of coronavirus disease 2019 (COVID-19). *Clin Chem Lab*
301 *Med.* 2020; 58(7): 1070-1076.
- 302 [16] Lippi G, Henry BM, Sanchis-Gomar F, Mattiuzzi C. Updates on laboratory
303 investigations in coronavirus disease 2019 (COVID-19). *Acta Biomed.* 2020; 91(3):
304 e2020030.

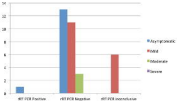
- 305 [17]Gonzalez DC, Khodamoradi K, Pai R, Guarch K, Connelly ZM, Ibrahim E, Arora H,
306 Ramasamy R. A systematic review on the investigation of SARS-CoV-2 in semen. *Res*
307 *Rep Urol.* 2020; 12: 615-621.
- 308 [18]Gacci M, Coppi M, Baldi E, Sebastianelli A, Zaccaro C, Morselli S, Pecoraro A, Manera
309 A, Nicoletti R, Liaci A, Bisegna C, Gemma L, Giancane S, Pollini S, Antonelli A, Lagi
310 F, Marchiani S, Dabizzi S, Degl'Innocenti S, Annunziato F, Maggi M, Vignozzi L,
311 Bartoloni A, Rossolini GM, Serni S. Semen impairment and occurrence of SARS-CoV-2
312 virus in semen after recovery from COVID-19. *Hum Reprod.* 2021; 36(6): 1520-1529.
- 313 [19]Ruan Y, Hu B, Liu Z, Liu K, Jiang H, Li H, Li R, Luan Y, Liu X, Yu G, Xu S, Yuan X,
314 Wang S, Yang W, Ye Z, Liu J, Wang T. No detection of SARS-CoV-2 from urine,
315 expressed prostatic secretions, and semen in 74 recovered COVID-19 male patients: A
316 perspective and urogenital evaluation. *Andrology.* 2021; 9(1): 99-106.
- 317 [20]Li D, Jin M, Bao P, Zhao W, Zhang S. Clinical characteristics and results of semen tests
318 among men with Coronavirus Disease 2019. *JAMA Netw Open.* 2020; 3(5): e208292.
- 319 [21]Jang JG, Hur J, Choi EY, Hong KS, Lee W, Ahn JH. Prognostic factors for severe
320 Coronavirus Disease 2019 in Daegu, Korea. *J Korean Med Sci.* 2020; 35(23): e209.
- 321 [22]Izcovich A, Ragusa MA, Tortosa F, Lavena Marzio MA, Agnoletti C, Bengolea A,
322 Ceirano A, Espinosa F, Saavedra E, Sanguine V, Tassara A, Cid C, Catalano HN,
323 Agarwal A, Foroutan F, Rada G. Prognostic factors for severity and mortality in patients
324 infected with COVID-19: A systematic review. *PLoS One.* 2020; 15(11): e0241955.
- 325 [23]Bhattacharya S, Vidyadharan A, Joy VM. Inconclusive SARS-COV-2 reverse
326 transcription-polymerase chain reaction test reports: Interpretation, clinical and infection
327 control implications. *J Acad Clin Microbiol.* 2020; 22(1): 59-61
- 328 [24]Lim JU, Lee JH, Kim JS, Hwang YI, Kim TH, Lim SY, Yoo KH, Jung KS, Kim YK,
329 Rhee CK. Comparison of World Health Organization and Asia-Pacific body mass index
330 classifications in COPD patients. *Int J Chron Obstruct Pulmon Dis.* 2017; 12: 2465-2475.
- 331 [25]Xu J, Qi L, Chi X, Yang J, Wei X, Gong E, Peh S, Gu J. Orchitis: A complication of
332 severe acute respiratory syndrome (SARS). *Biol Reprod.* 2006; 74(2): 410-6.
- 333 [26]Arnaout R, Lee RA, Lee GR, Callahan C, Yen CF, Smith KP, Arora R, Kirby JE. SARS-
334 CoV2 testing: The limit of detection matters. *bioRxiv.* 2020: 2020.06.02.131144.



Surabaya, Indonesia

Amplification Plot





SARS-CoV-2 in Semen

