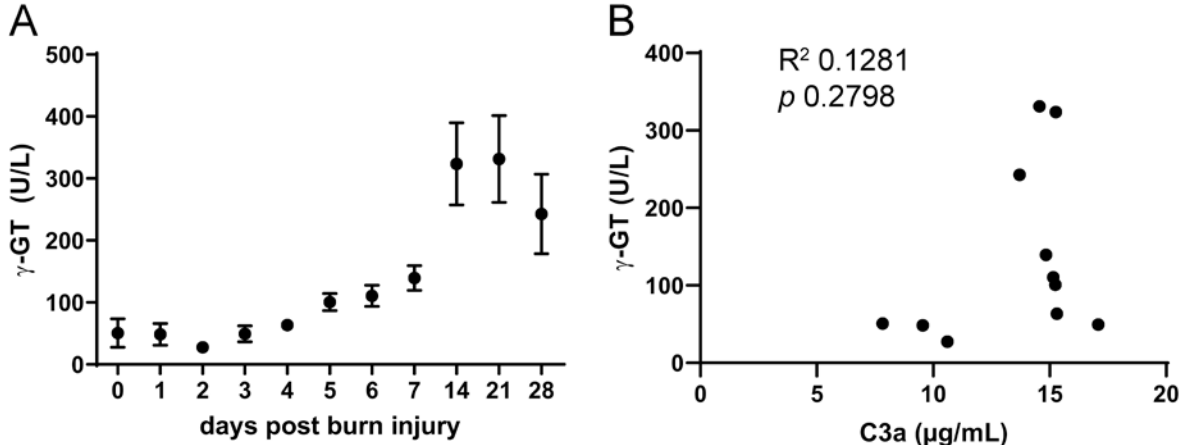


Supplemental Information

Severity of thermal burn injury is associated with systemic neutrophil activation

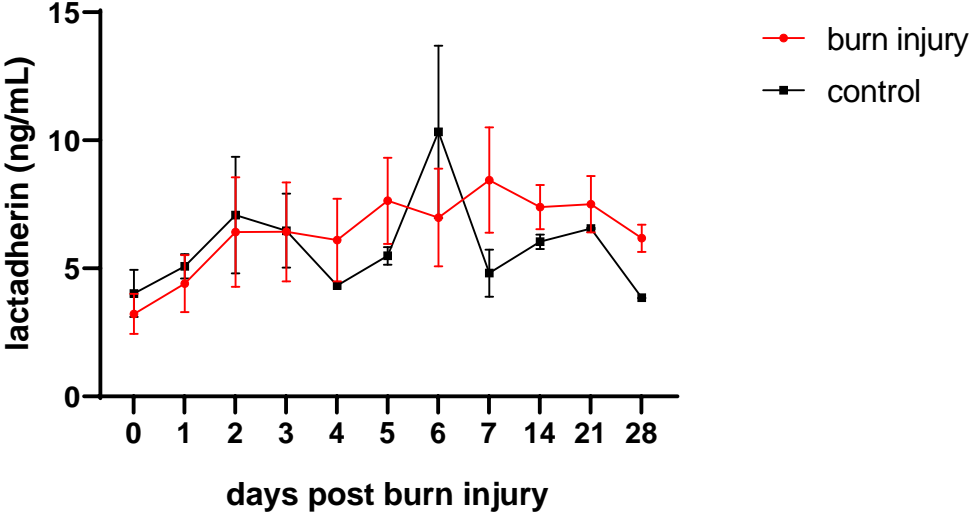
Maria Laggner, Marie-Therese Lingitz, Dragan Copic, Martin Direder, Katharina Klas, Daniel Bormann, Alfred Gugerell, Bernhard Moser, Christine Radtke, Stefan Hacker, Michael Mildner, Hendrik Jan Ankersmit, Thomas Haider

Supplemental Figure S1



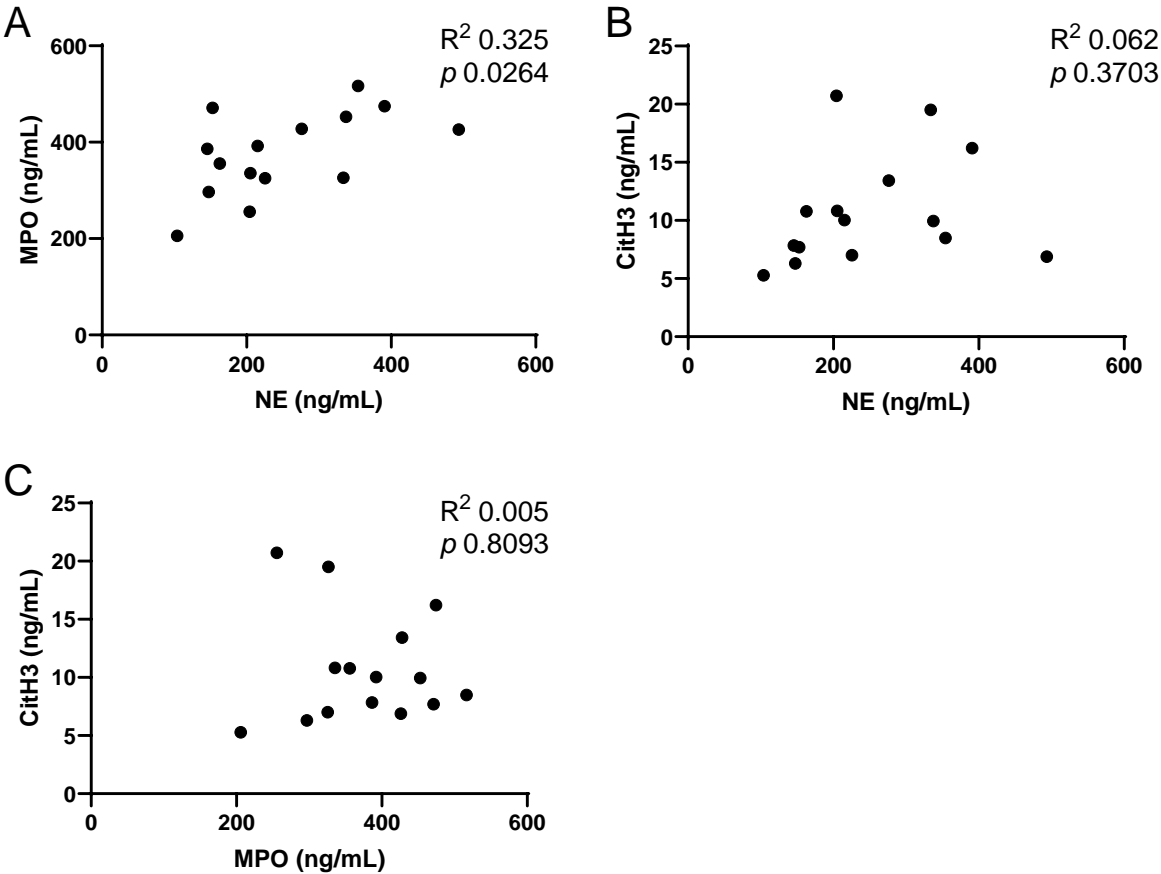
Supplemental Figure S1. γ -GT levels following burn injury. (A) Serum γ -GT levels in burn victims up to 4 weeks post injury. (B) Correlation between serum C3a and γ -GT concentrations over 28 days post burn trauma.

Supplemental Figure S2



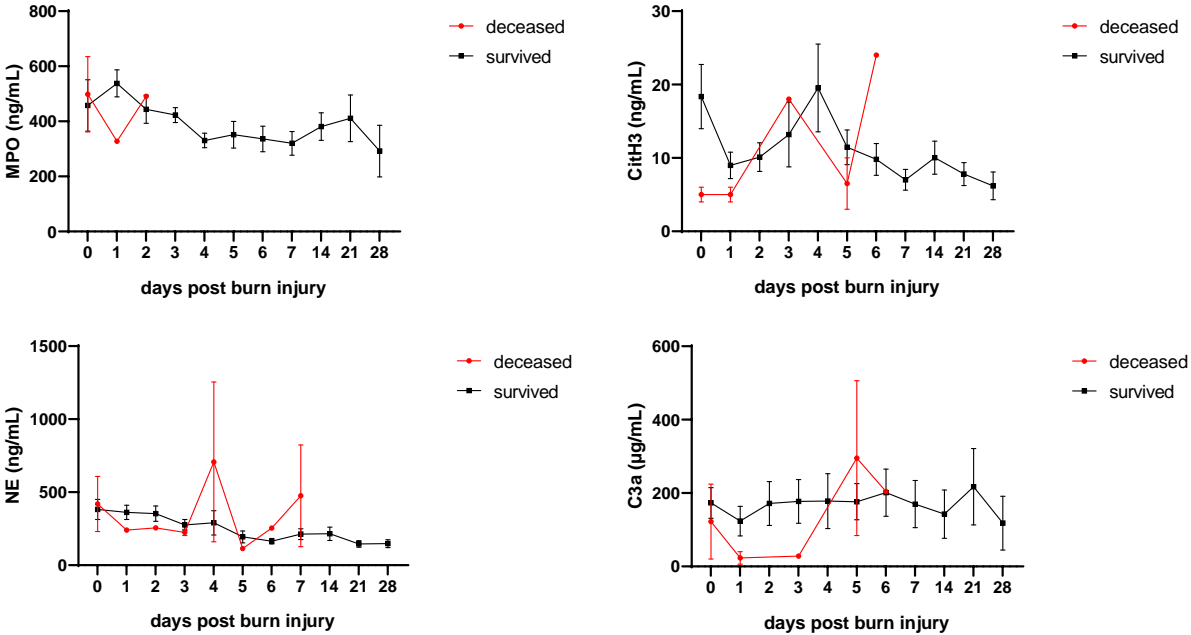
Supplemental Figure S2. Lactadherin levels following burn injury. Lactadherin concentrations in sera of burn victims and healthy controls over 4 weeks.

Supplemental Figure S3



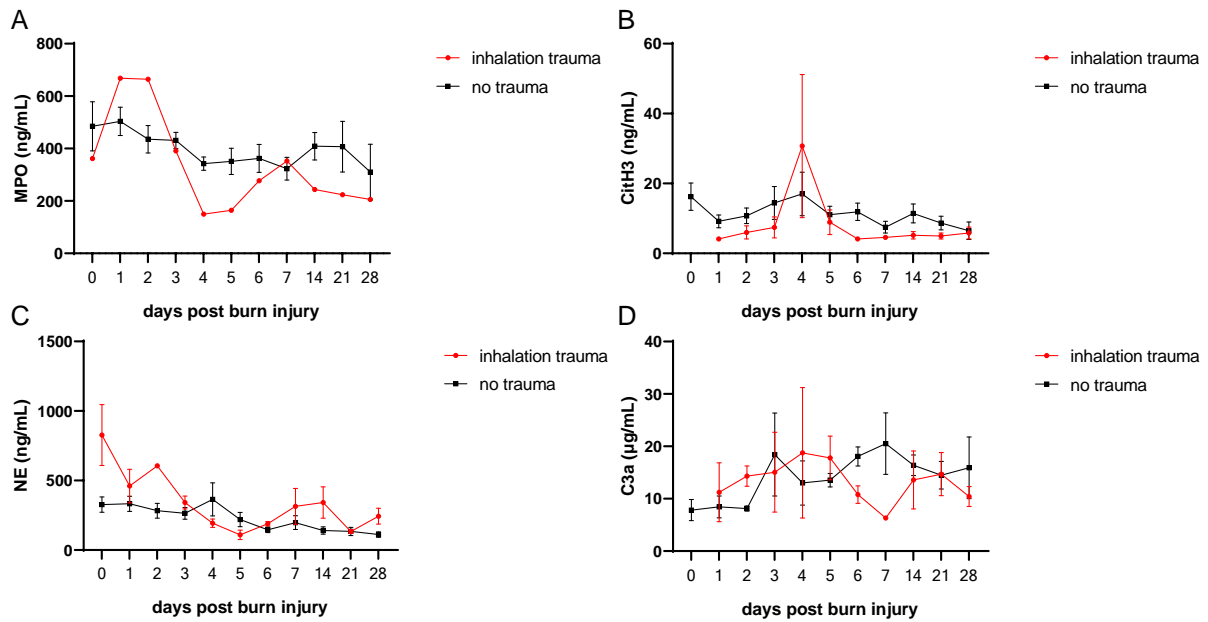
Supplemental Figure S3. Correlations between serum levels of NETosis markers in burn victims. Correlation between (A) MPO and NE, (B) CitH3 and NE, and (C) CitH3 and MPO on admission day.

Supplemental Figure S4



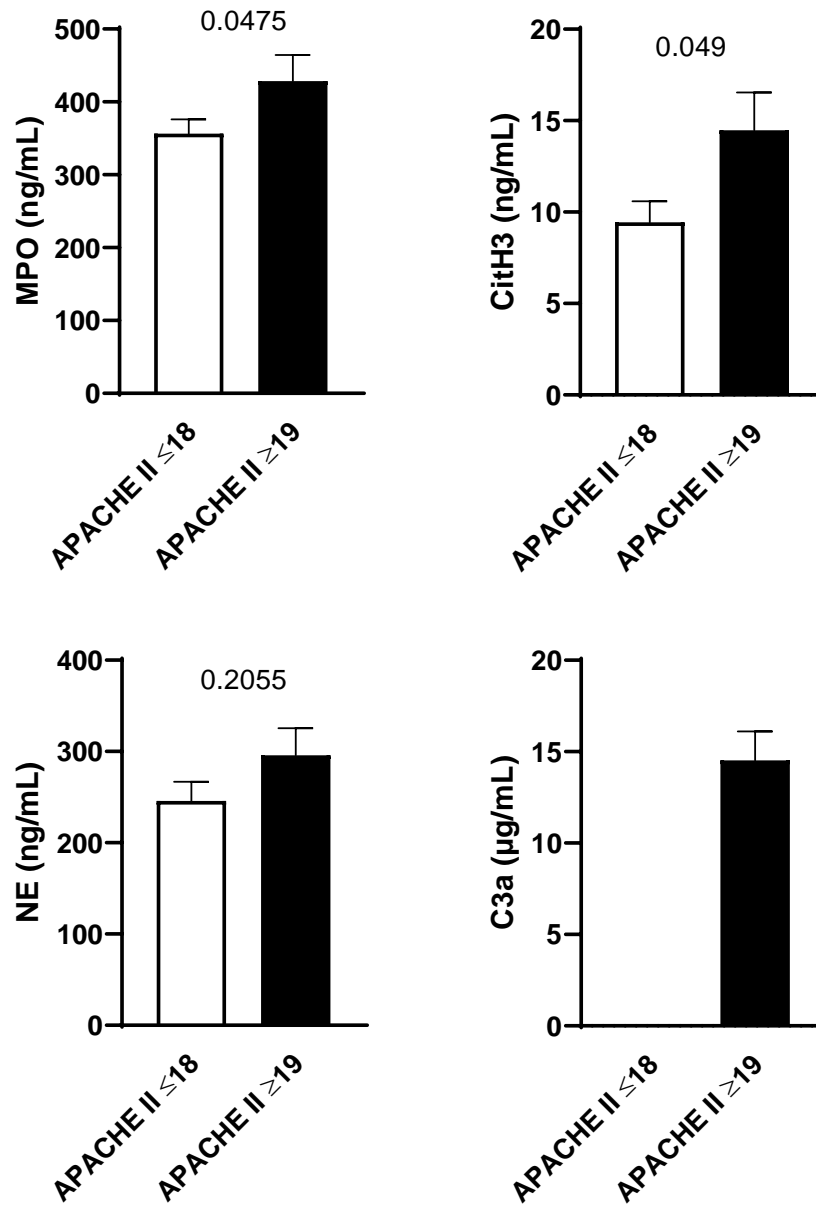
Supplemental Figure S4. NETosis levels in patients succumbing to burn injury. Serum concentrations of neutrophil-derived factors were compared between survivors and deceased patients.

Supplemental Figure S5



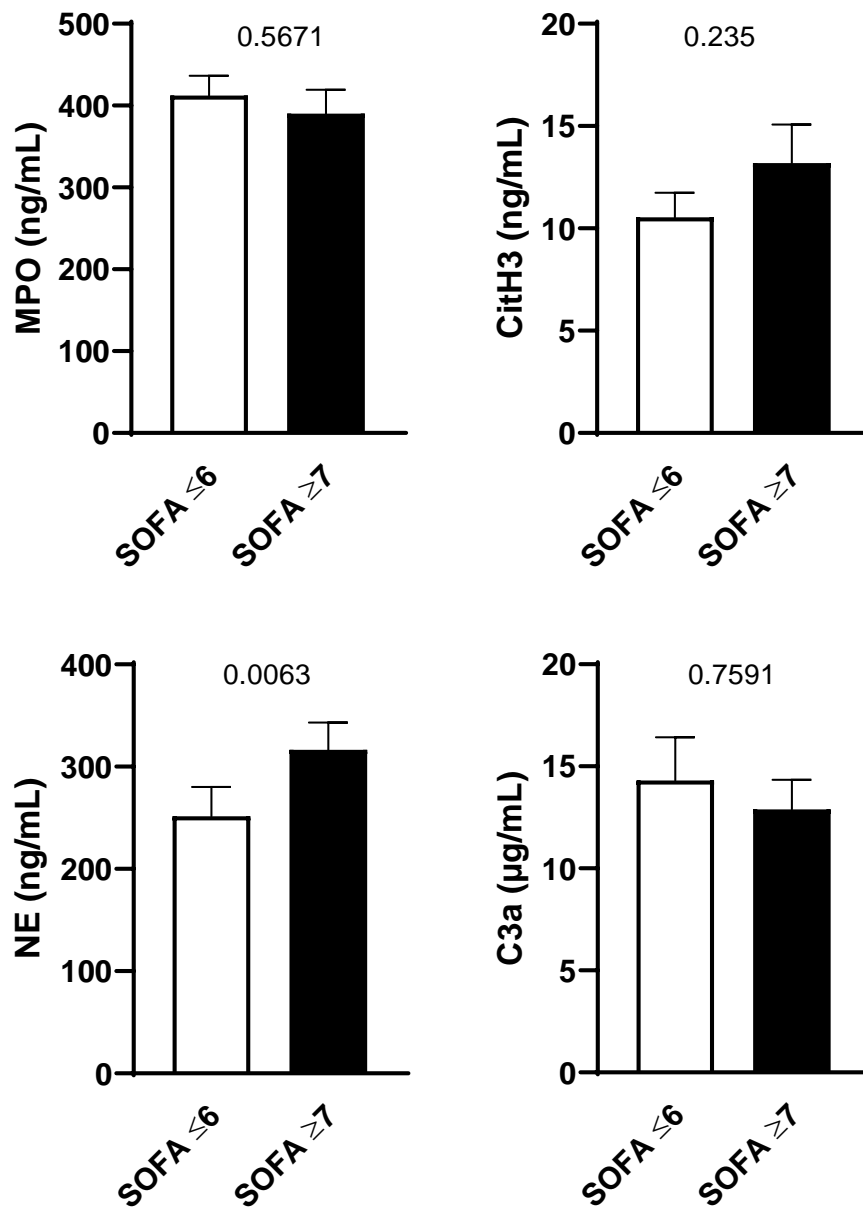
Supplemental Figure S5. Effect of inhalation trauma on serum NETosis levels. Serum levels of neutrophil-derived factors were compared between burn victims with inhalation trauma and without inhalation trauma. Serum levels of (A) MPO, (B) CitH3, (C) NE, and (D) C3a were assessed up to 4 weeks post burn injury.

Supplemental Figure S6



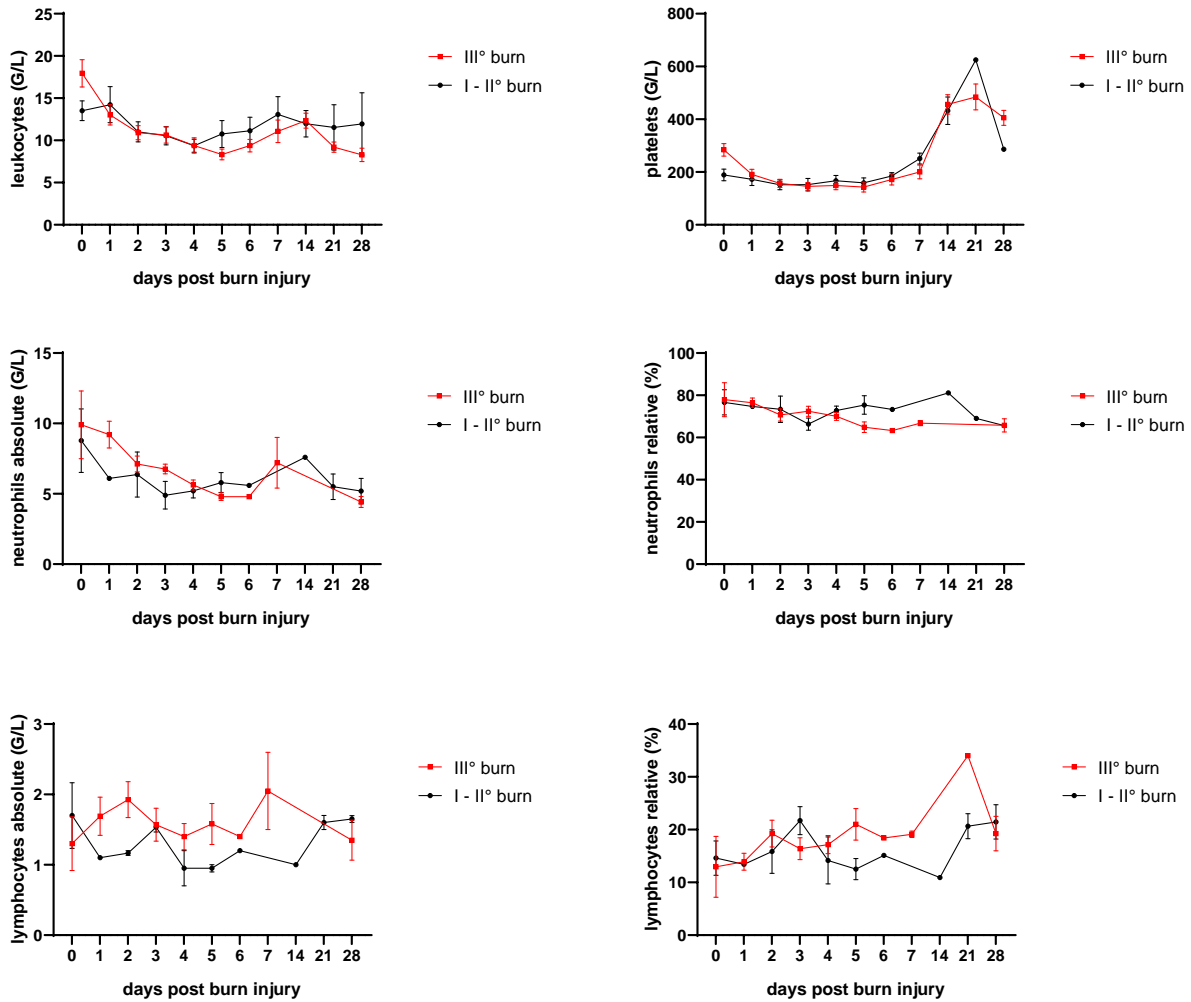
Supplemental Figure S6. Serum concentrations of neutrophil-derived factors in low and high APACHE II scores. Scores were determined on admission day and categorized into low (≤ 18) and high (≥ 19) values. Serum concentrations of MPO, CitH3, NE, and C3a of the first 7 days post admission were compared. Data were compared by Mann-Whitney test.

Supplemental Figure S7



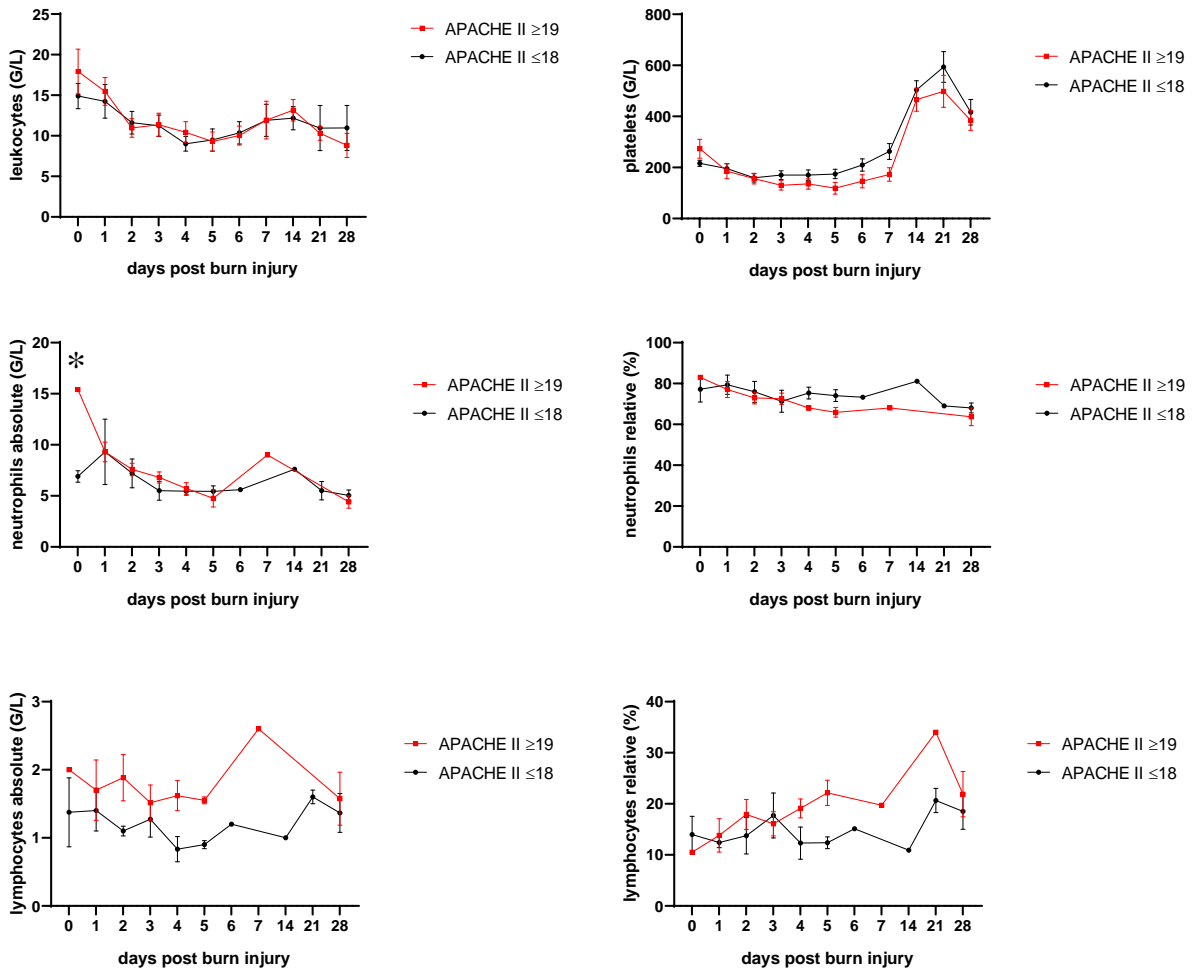
Supplemental Figure S7. Serum concentrations of neutrophil-derived factors in low and high SOFA scores. Scores were determined on admission day and categorized into low (≤ 6) and high (≥ 7) values. Serum concentrations of MPO, CitH3, NE, and C3a of the first 7 days post admission were compared. Data were compared by Mann-Whitney test.

Supplemental Figure S8



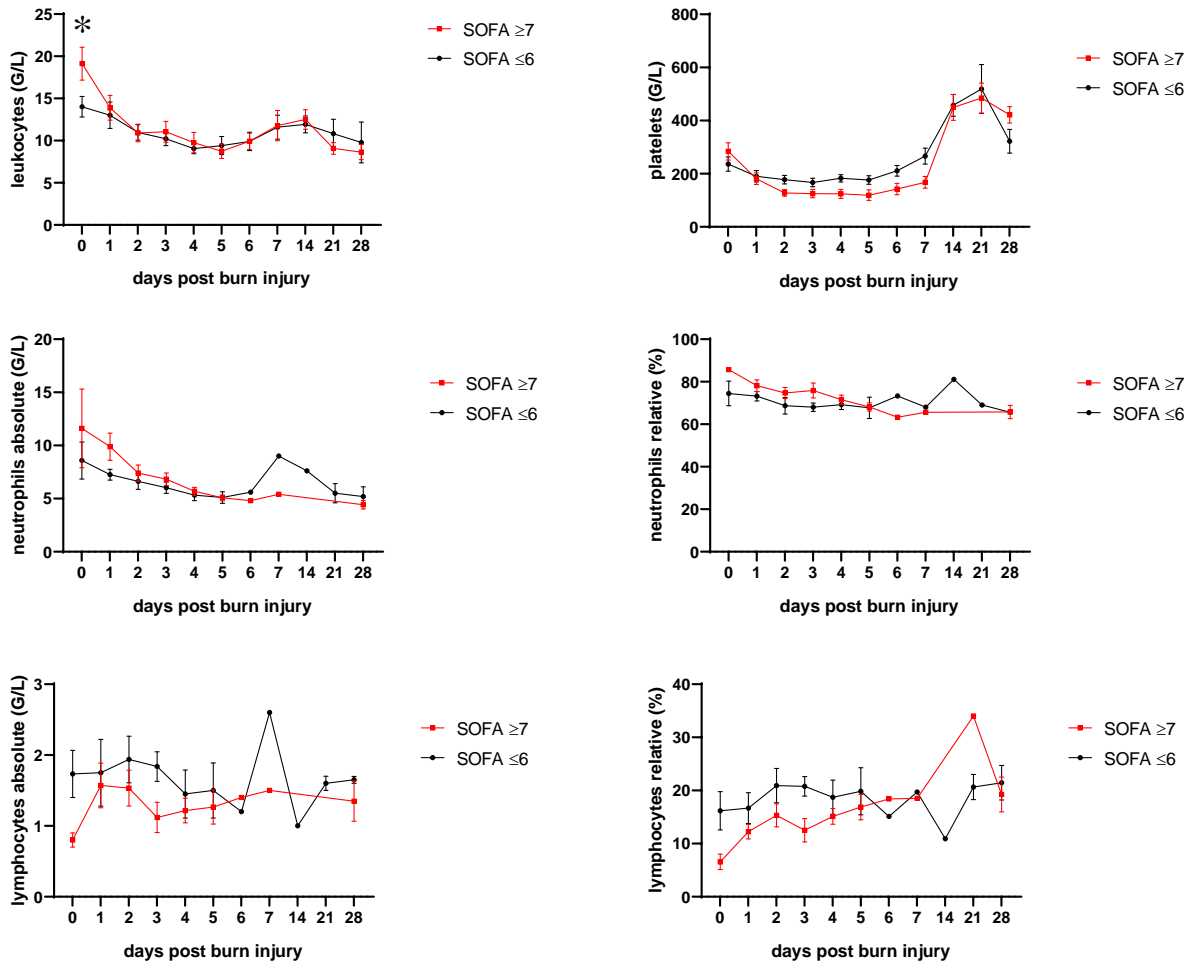
Supplemental Figure S8. Immune cell counts of patients with higher and lower degree burns. Data of 3rd degree burns and lower degree burns were compared by Mann-Whitney test.

Supplemental Figure S9



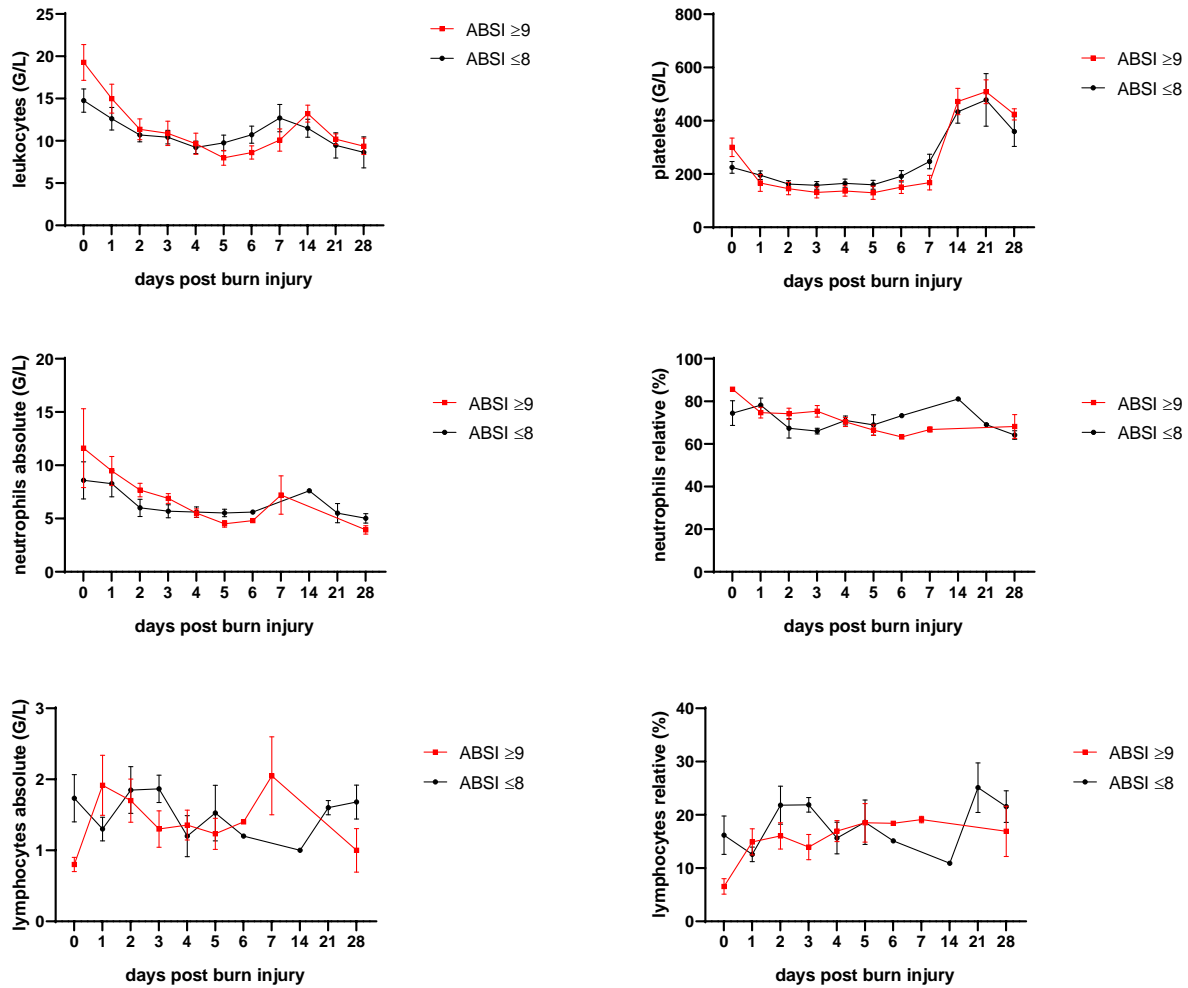
Supplemental Figure S9. Immune cell counts of patients with high and low APACHE II scores. Scores were determined on admission day and categorized into low (≤ 18) and high (≥ 19) values. Data were compared by Mann-Whitney test.

Supplemental Figure S10



Supplemental Figure S10. Immune cell counts of patients with high and low SOFA scores. Scores were determined on admission day and categorized into low (≤ 6) and high (≥ 7) values. Data were compared by Mann-Whitney test.

Supplemental Figure S11



Supplemental Figure S11. Immune cell counts of patients with high and low ABSI scores. Scores were determined on admission day and categorized into low (≤ 8) and high (≥ 9) values. Data were compared by Mann-Whitney test.