

Supplementary Material

Recombinant zoster vaccine and reduced risk of COVID-19 diagnosis and hospitalization in older adults

Katia J. Bruxvoort, PhD,^{1,2*†} Bradley Ackerson, MD,^{1†} Lina S. Sy, MPH,¹ Amit Bhavsar, MBBS, MHA³
Hung Fu Tseng, PhD,^{1,4} Ana Florea, PhD,¹ Yi Luo, PhD,¹ Yun Tian, MS,¹ Zendi Solano, BS,¹ Robyn
Widenmaier, MBiotech,⁵ Meng Shi, MS,⁵ Robbert Van Der Most, PhD,⁶ Johannes Eberhard Schmidt, MD,
MPH,⁷ Jasur Danier, MD,⁵ Thomas Breuer, MD, MSc,³ Lei Qian, PhD¹

¹Department of Research & Evaluation, Kaiser Permanente Southern California, 100 S Los Robles,
Pasadena, CA 91101, USA

²Department of Epidemiology, University of Alabama at Birmingham, 1665 University Blvd, Birmingham,
AL 35233, USA

³GSK, 20 Avenue Fleming, 1300 Wavre, Belgium

⁴Kaiser Permanente Bernard J. Tyson School of Medicine, 98 S. Los Robles Ave., Pasadena, CA 91101,
USA

⁵GSK, 14200 Shady Grove Road, Rockville, MD 20850, USA

⁶GSK, 89 Rue de l'Institut, 1330 Rixensart, Belgium

⁷GSK, 1 Via Fiorentina, 53100 Siena, Italy

*Address for correspondence: kbruxvoort@uab.edu

†KJB and BA contributed equally to this work

Supplementary Table 1. COVID-19 diagnosis codes

DXID¹	Description	ICD-10 codes
12459073	CORONAVIRUS COVID-19 ACUTE RESPIRATORY DISTRESS SYNDROME	B97.29, J80, U07.1
12459074	CORONAVIRUS COVID-19 PNEUMONIA	B97.29, J12.82, J12.89, U07.1
12459075	CORONAVIRUS COVID-19 ACUTE BRONCHITIS	B97.29, J20.8, U07.1
12459076	CORONAVIRUS COVID-19 LOWER RESPIRATORY INFECTION	B97.29, J22, U07.1
12459077	ASYMPTOMATIC CORONAVIRUS COVID-19 DISEASE	B34.2, U07.1
12459078	CORONAVIRUS COVID-19 DISEASE	B34.2, U07.1
12459108	COVID-19	U07.1
12459208	CORONAVIRUS COVID-19 TEST POSITIVE BY OUTSIDE LABORATORY	U07.1
12460641	CORONAVIRUS COVID-19 MULTISYSTEM INFLAMMATORY SYNDROME IN ADULT	M35.8, M35.81, U07.1
12460683	PNEUMONIA DUE TO CORONAVIRUS DISEASE 2019	J12.82

¹KPSC uses internal codes termed "DXIDs" (lefthand column) for COVID-19 diagnoses, which each have a specific description for COVID-19 (middle column). The DXIDs correspond to ICD-10 codes (righthand column), which were not used in data analyses but are shown for reference.

Supplementary Table 2. Incidence rates and hazard ratios of COVID-19 diagnosis and hospitalization among vaccinated (at least 1 dose of RZV) versus unvaccinated individuals, among a subset of individuals who received influenza vaccination but no other vaccinations in the year prior to 3/1/2020

Outcomes	Vaccinated (N=37513)			Unvaccinated (N=75026)			Hazard Ratio (95% CI)	
	Number of cases	Number of person-years	Incidence per 1000 person-years (95% CI)	Number of cases	Number of person-years	Incidence per 1000 person-years (95% CI)	Unadjusted	Adjusted ^a
COVID-19 diagnosis	1356	30677.70	44.20 (41.91-46.62)	3070	59409.98	51.67 (49.88-53.54)	0.84 (0.79-0.90)	0.83 (0.78-0.89)
COVID-19 hospitalization	290	30850.43	9.40 (8.38-10.55)	816	59765.63	13.65 (12.75-14.62)	0.68 (0.59-0.78)	0.68 (0.59-0.78)

Abbreviations: COVID-19, coronavirus disease 2019; RZV, recombinant zoster vaccine

^a Adjusted for covariates: body mass index, smoking, number of outpatient visits, and hypertension

Supplementary Table 3. Baseline characteristics of RZV (2 doses) vaccinated and unvaccinated cohort

	Vaccinated	Unvaccinated	Absolute
	N = 94895	N = 189790	Standardized Difference^d
	n (%)	n (%)	
Age at index date, years			N/A ^c
50-59	13102 (13.8)	26204 (13.8)	
60-69	35004 (36.9)	70008 (36.9)	
70-79	33823 (35.6)	67646 (35.6)	
≥80	12966 (13.7)	25932 (13.7)	
Sex			N/A ^c
Female	55755 (58.8)	111510 (58.8)	
Male	39140 (41.2)	78280 (41.2)	
Race/Ethnicity			N/A ^c
Non-Hispanic White	54371 (57.3)	108742 (57.3)	
Non-Hispanic Black	4324 (4.6)	8648 (4.6)	
Hispanic	16865 (17.8)	33730 (17.8)	
Non-Hispanic Asian	16057 (16.9)	32114 (16.9)	
Other/Unknown	3278 (3.5)	6556 (3.5)	
Body mass index ^a			0.41
<18.5	1347 (1.4)	2989 (1.6)	
18.5-<25	30662 (32.3)	50332 (26.5)	
25-<30	34477 (36.3)	59562 (31.4)	
30-<35	16757 (17.7)	32653 (17.2)	
35-<40	6174 (6.5)	12904 (6.8)	
40-<45	2154 (2.3)	4566 (2.4)	
≥45	985 (1.0)	2393 (1.3)	
Unknown	2339 (2.5)	24391 (12.9)	
Smoking ^a			0.39
No	71024 (74.8)	123695 (65.2)	
Yes	21605 (22.8)	42639 (22.5)	
Unknown	2266 (2.4)	23456 (12.4)	
Number of outpatient visits ^b			0.56
0	329 (0.3)	16035 (8.4)	
1-4	17163 (18.1)	59974 (31.6)	
5-10	36790 (38.8)	57975 (30.5)	
≥11	40613 (42.8)	55806 (29.4)	
Number of emergency department visits ^b			0.06
0	77527 (81.7)	151354 (79.7)	
1	12122 (12.8)	25455 (13.4)	
≥2	5246 (5.5)	12981 (6.8)	
Number of hospitalizations ^b ,			0.01

0	83334 (87.8)	166684 (87.8)	
1	7053 (7.4)	14395 (7.6)	
≥2	4508 (4.8)	8711 (4.6)	
Frailty (top quartile) ^b	24050 (25.3)	47113 (24.8)	0.01
Baseline comorbidities ^b			
Cardiovascular disease	29971 (31.6)	53747 (28.3)	0.07
Diabetes	21254 (22.4)	43645 (23.0)	0.01
Hypertension	46781 (49.3)	84396 (44.5)	0.10
Pulmonary disease	15225 (16.0)	26965 (14.2)	0.05
Renal disease	12381 (13.0)	24840 (13.1)	0.00
Cancer	5590 (5.9)	11372 (6.0)	0.00
HIV	773 (0.8)	493 (0.3)	0.08
Autoimmune disease	4950 (5.2)	8936 (4.7)	0.02
Other vaccinations ^b			
Influenza vaccine	88710 (98.5)	136220 (96.9)	
PCV13/PPSV23	10774 (12.0)	16442 (11.7)	
Tdap	8375 (9.3)	11071 (7.9)	

Abbreviations: PCV13, 13-valent pneumococcal conjugate vaccine; PPSV23, pneumococcal polysaccharide vaccine; RZV, recombinant zoster vaccine; Tdap, tetanus, diphtheria, acellular pertussis vaccine

^a Most recent in 365 days prior to 3/1/2020

^b In 365 days prior to 3/1/2020

^c N/A= not applicable, for matching variable

^d Potential confounders were determined by absolute standardized difference >0.1

Medical center area not shown. There were no significant differences in the distribution of the vaccinated and unvaccinated individuals across the 19 medical center areas.

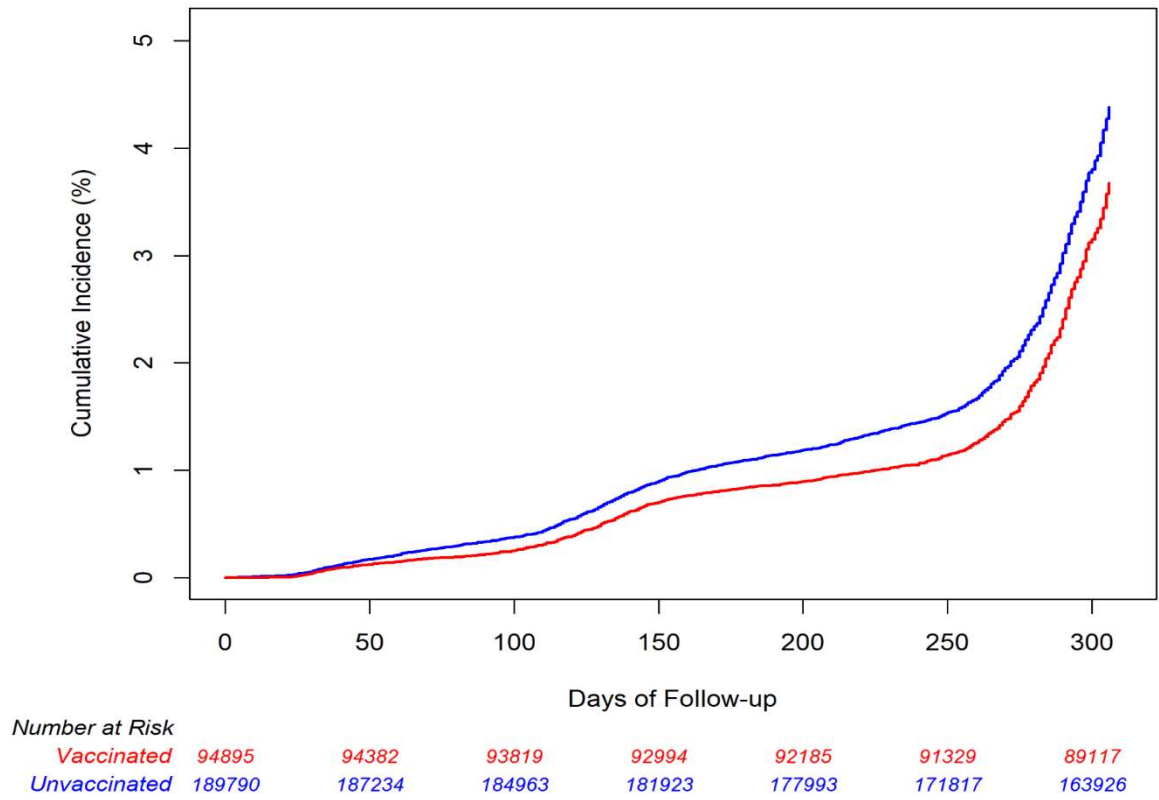
Supplementary Table 4. Incidence rates and hazard ratios of COVID-19 diagnosis and hospitalization among vaccinated (1 dose of RZV only) versus unvaccinated individuals

Outcomes	Vaccinated (N=54349)			Unvaccinated (N=108698)			Hazard Ratio (95% CI)	
	Number of cases	Number of person-years	Incidence per 1000 person-years (95% CI)	Number of cases	Number of person-years	Incidence per 1000 person-years (95% CI)	Unadjusted	Adjusted ^a
COVID-19 diagnosis	2548	44172.30	57.68 (55.49-59.97)	5339	86158.05	61.97 (60.33-63.65)	0.92 (0.88-0.97)	0.86 (0.82-0.91)
COVID-19 hospitalization	454	44525.79	10.20 (9.30-11.18)	1089	86873.60	12.54 (11.81-13.30)	0.81 (0.73-0.91)	0.76 (0.68-0.86)

Abbreviations: COVID-19, coronavirus disease 2019; RZV, recombinant zoster vaccine

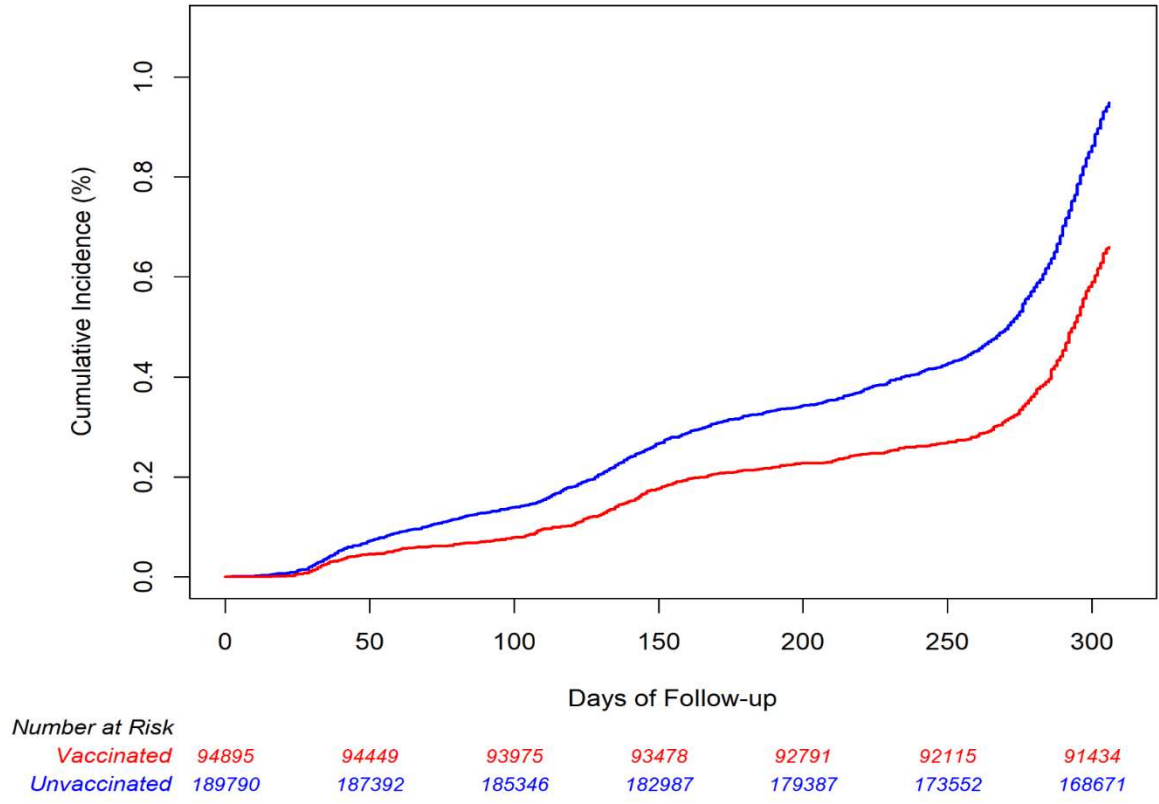
^a Adjusted for covariates: body mass index, smoking, number of outpatient visits, hypertension, and other vaccinations.

Supplementary Figure 1: Cumulative incidence estimates of COVID-19 diagnosis by RZV (2 dose) vaccination status



Abbreviations: COVID-19, coronavirus disease 2019; RZV, recombinant zoster vaccine

Supplementary Figure 2: Cumulative incidence estimates of COVID-19 hospitalization by RZV (2 dose) vaccination status



Abbreviations: COVID-19, coronavirus disease 2019; RZV, recombinant zoster vaccine