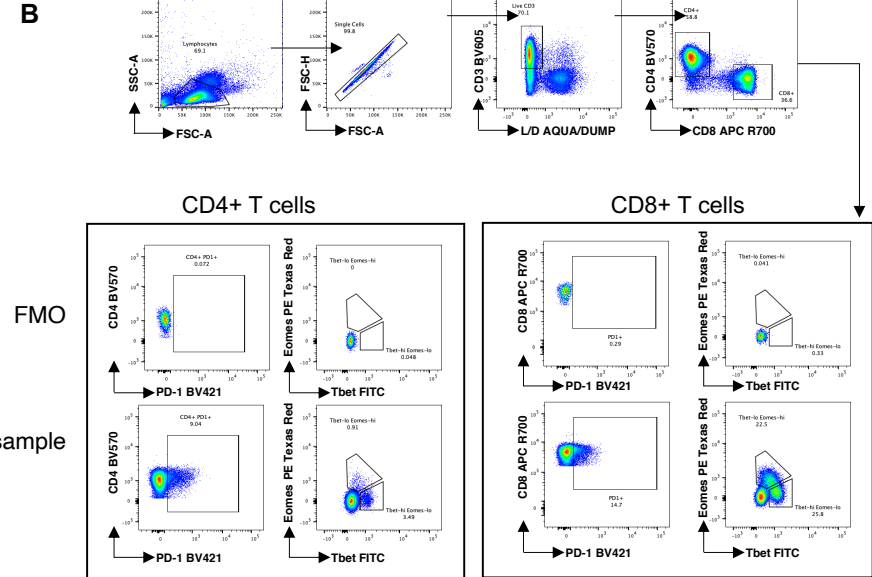
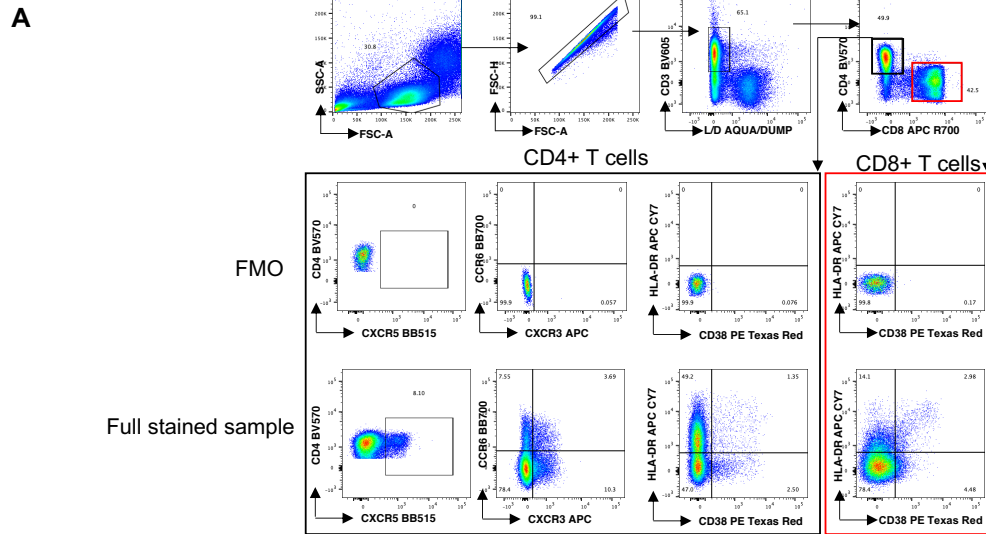
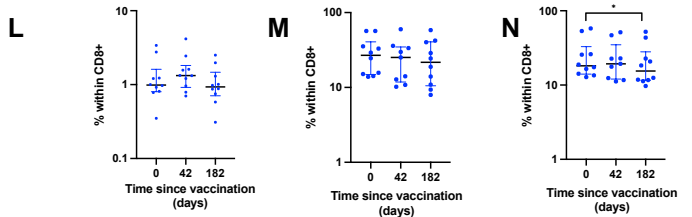
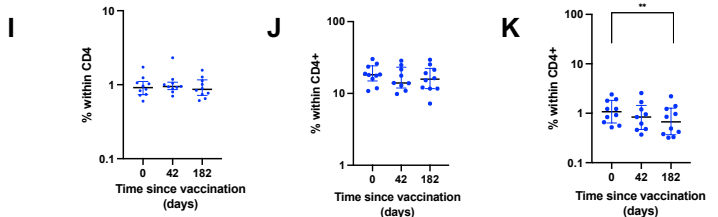
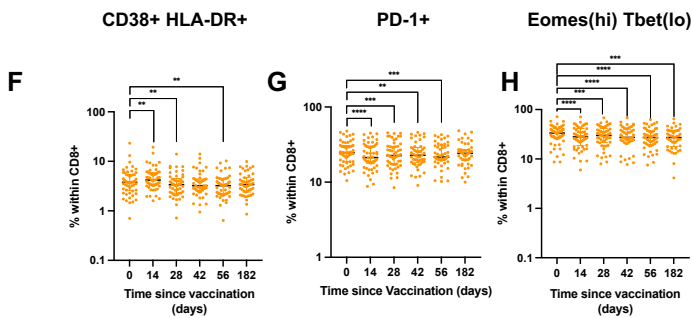
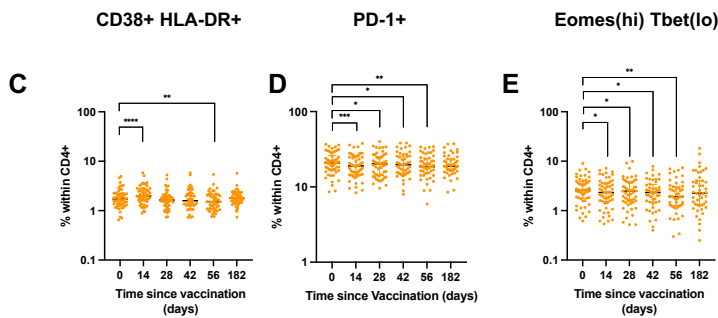


Supplementary figure 1: Flow cytometry gating strategy and kinetics of cells expressing activation and exhaustion markers

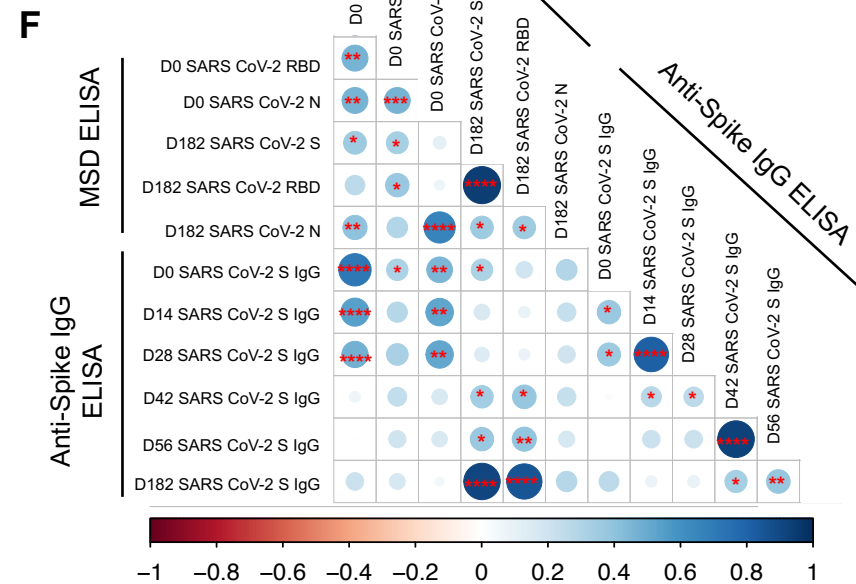
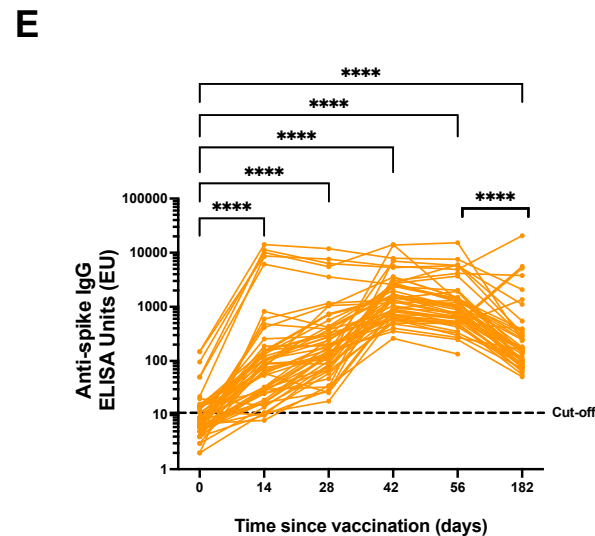
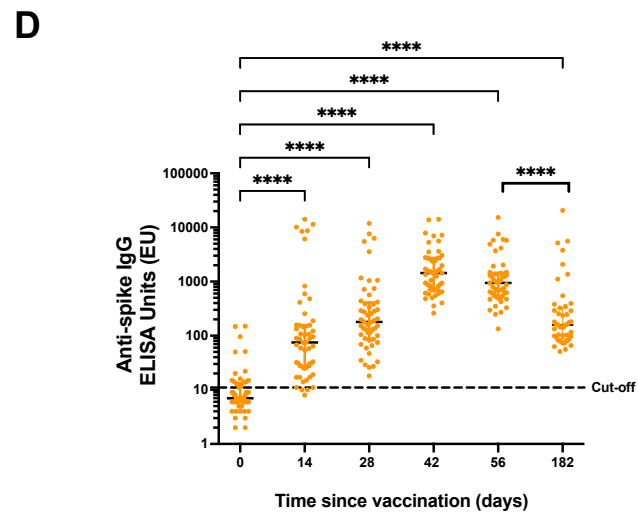
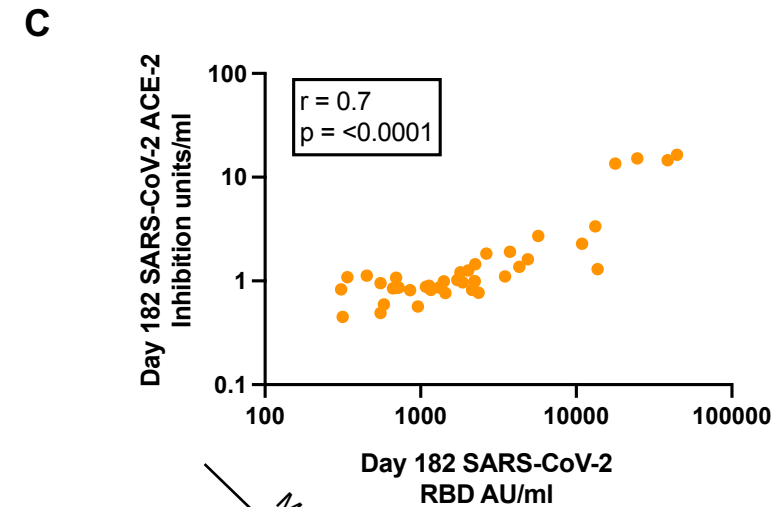
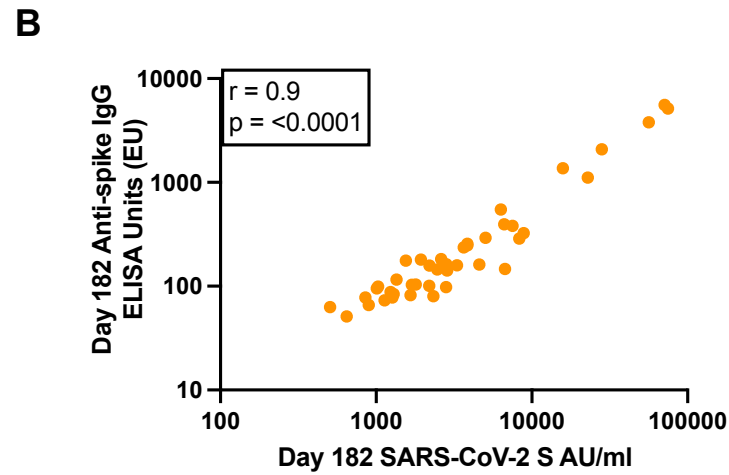
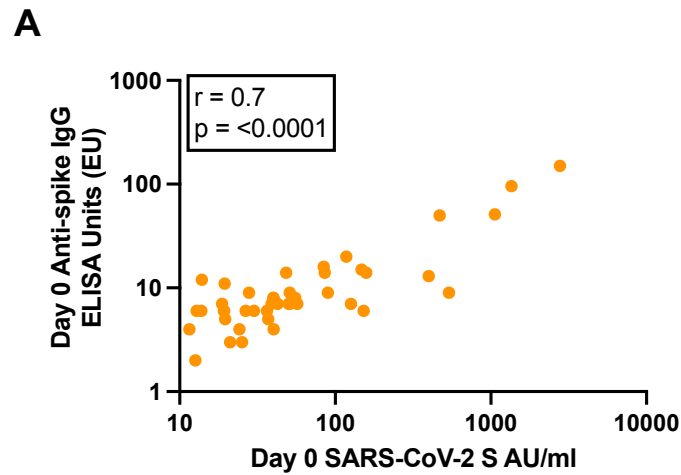


CD4+ T cells

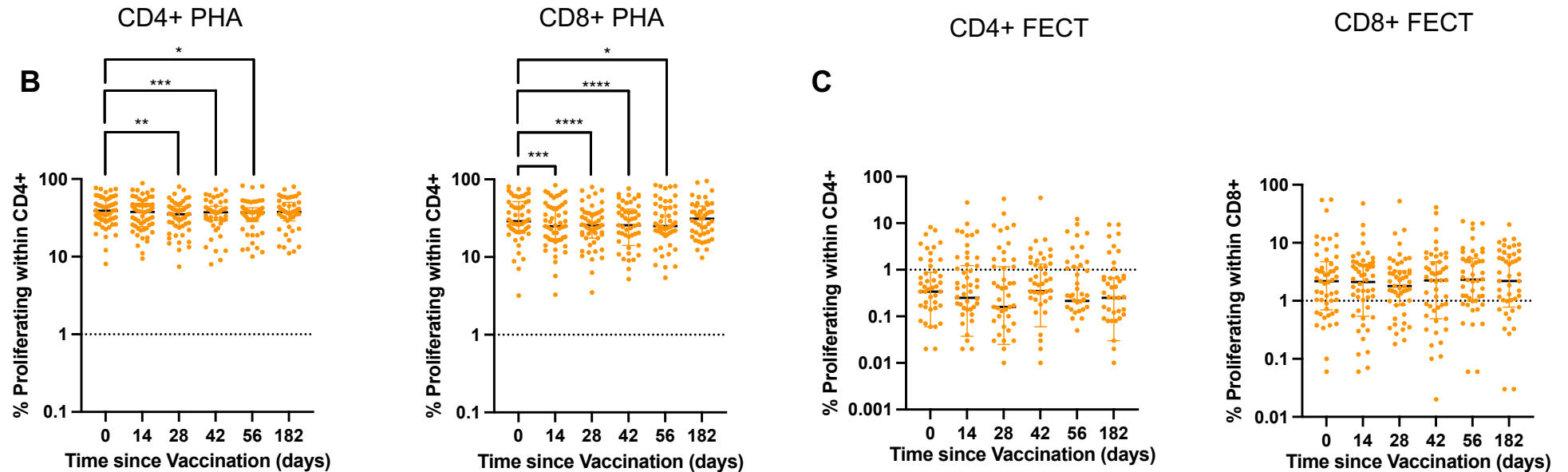
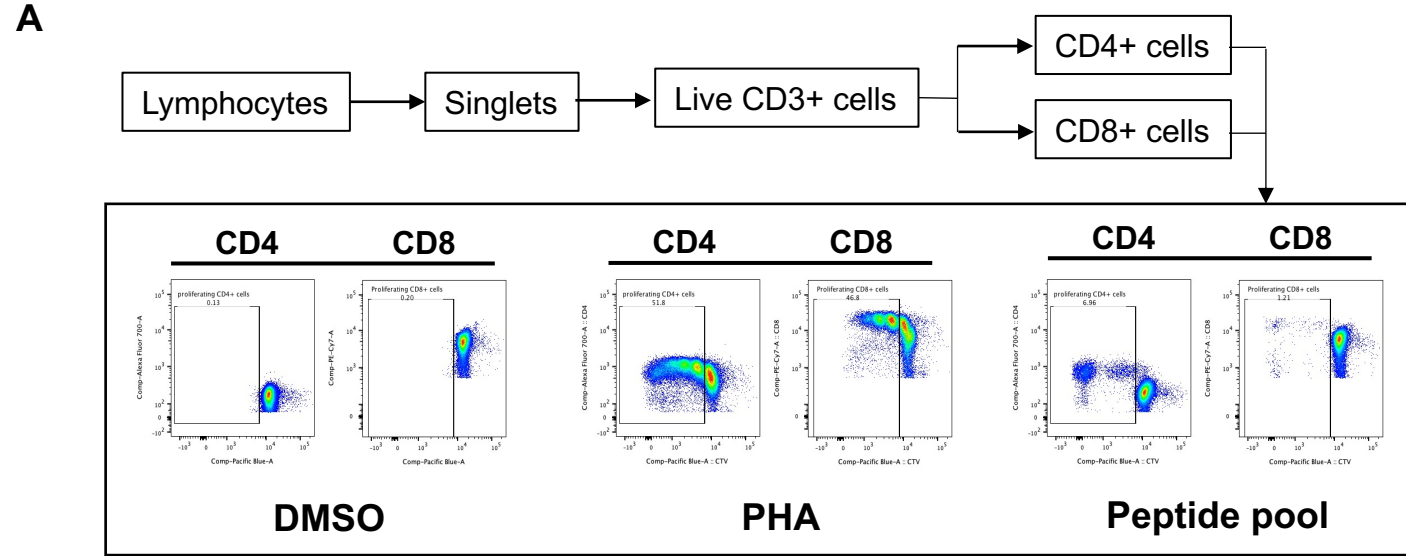
CD8+ T cells



Supplementary figure 2: Humoral immune responses against SARS-CoV-2 in PWH.

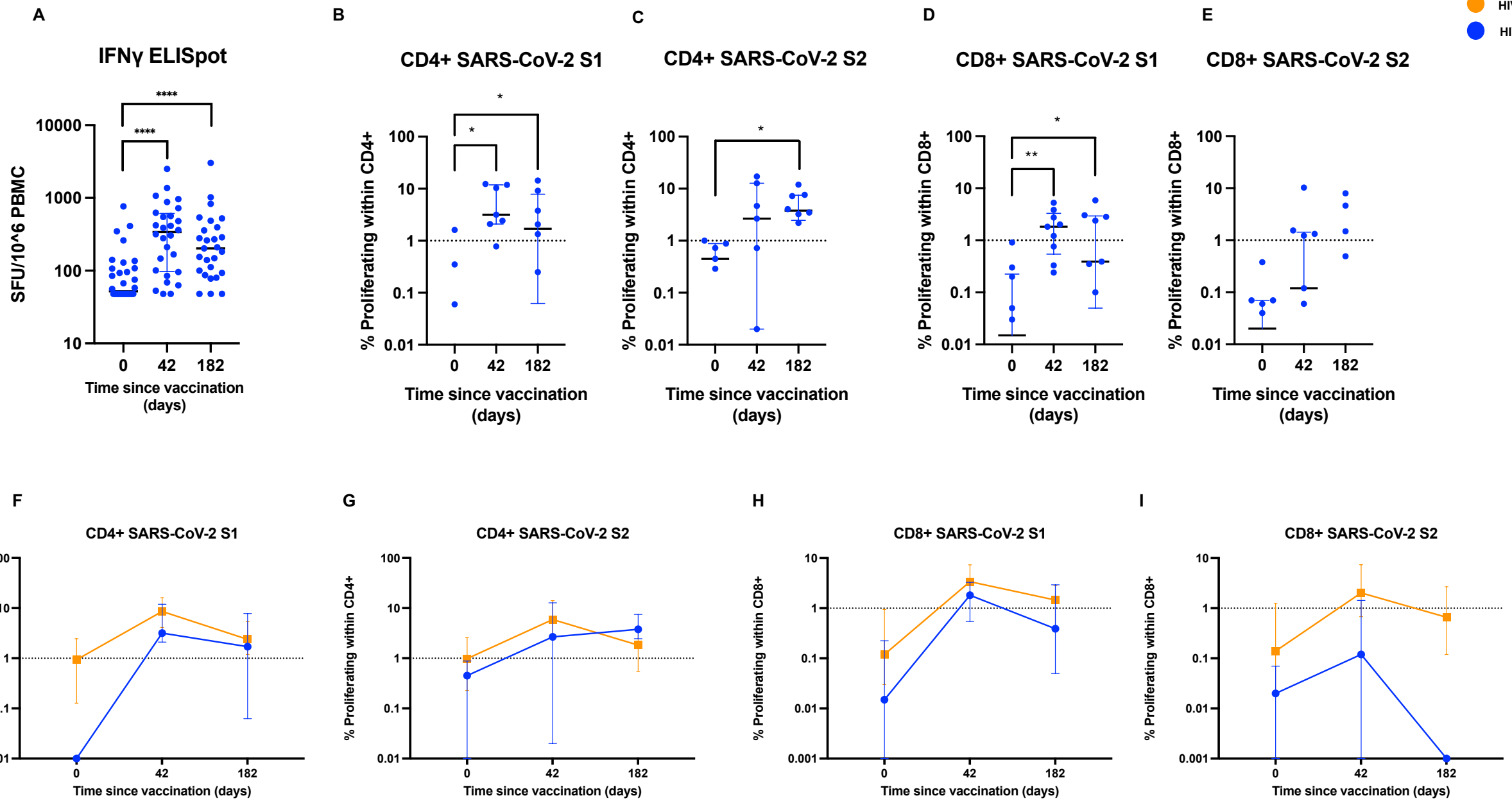


Supplementary figure 3: Gating strategy and T cell response to control antigens (FECT) and mitogen (PHA).



Supplementary figure 4: Longitudinal T cell responses to SARS-CoV-2 in HIV+ and HIV- subjects following ChAdOx1 nCoV-19 vaccination

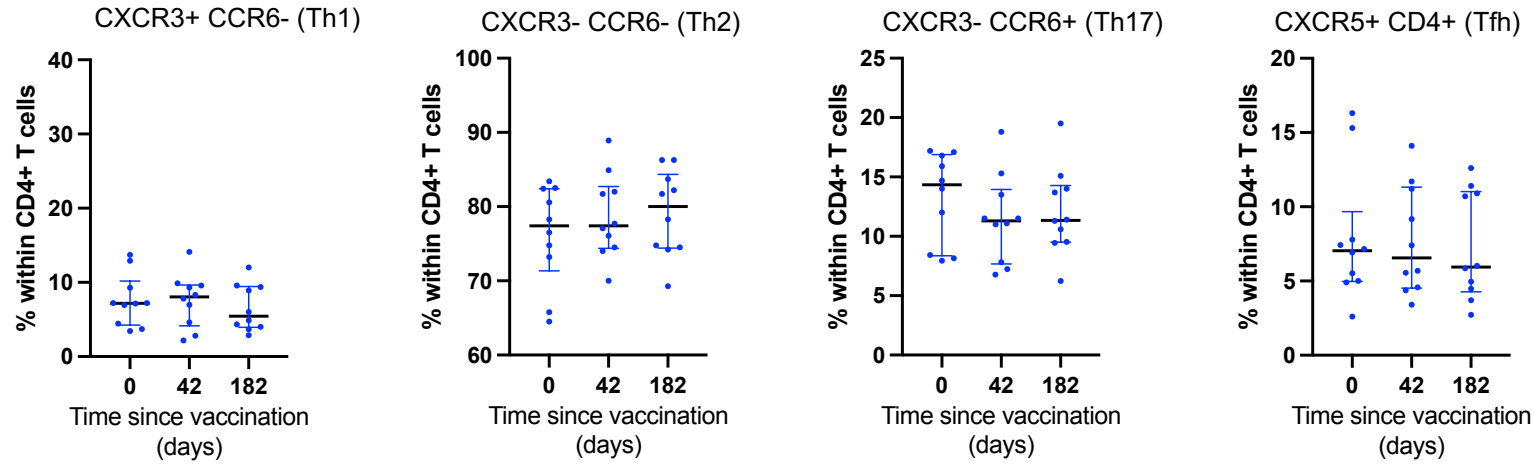
● HIV+
● HIV-



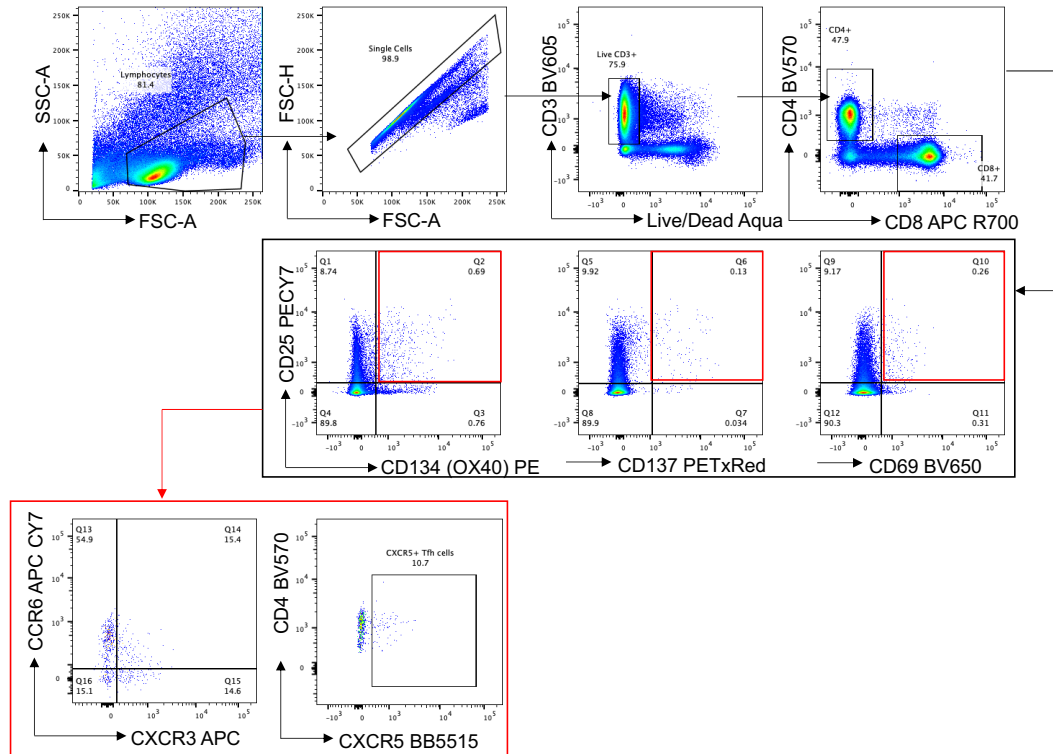
Supplementary figure 5: Phenotype of total and SARS-CoV-2 S-specific circulating CD4+ T cells

Total Circulating CD4+ T cells

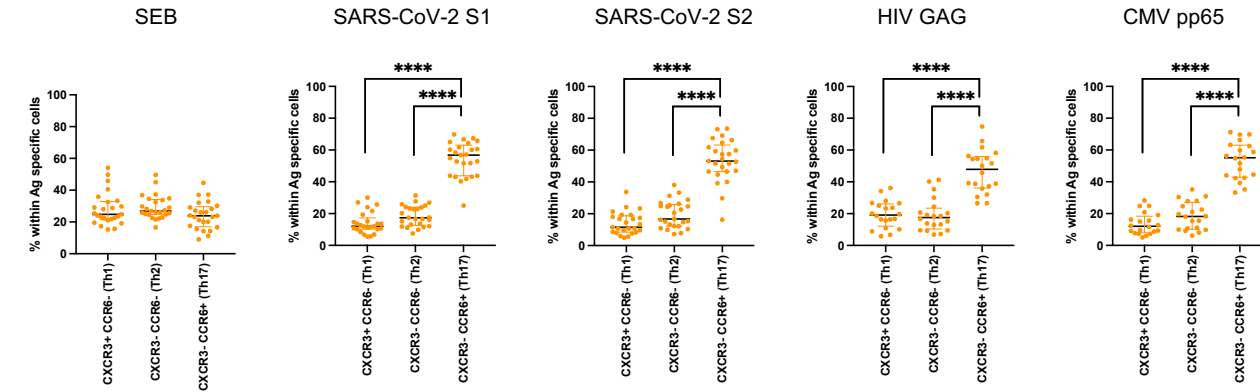
A



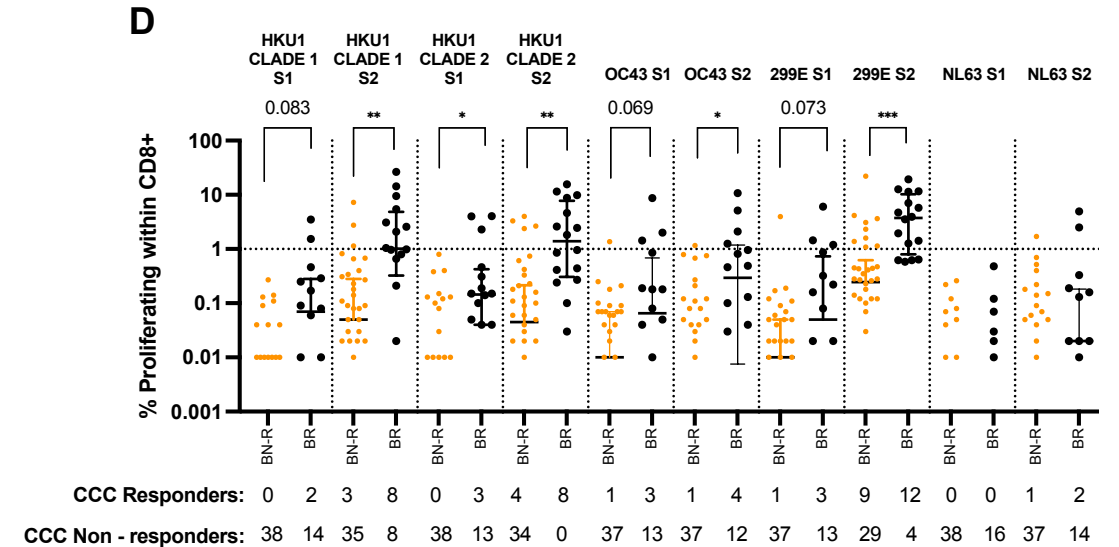
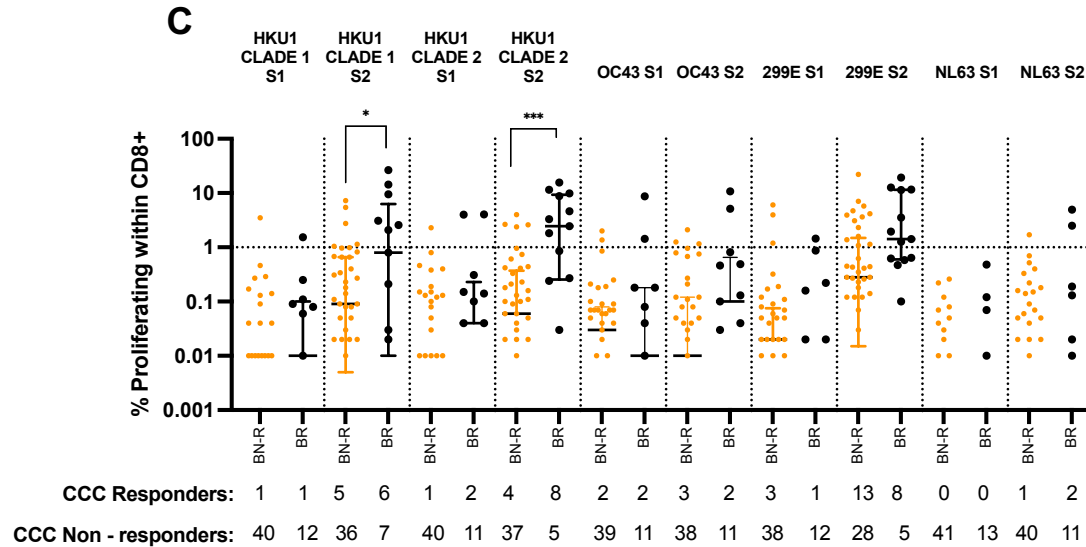
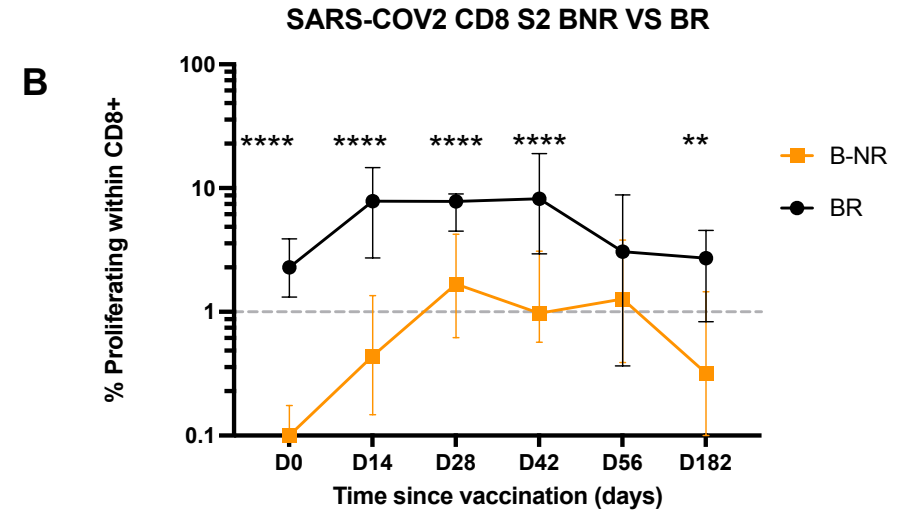
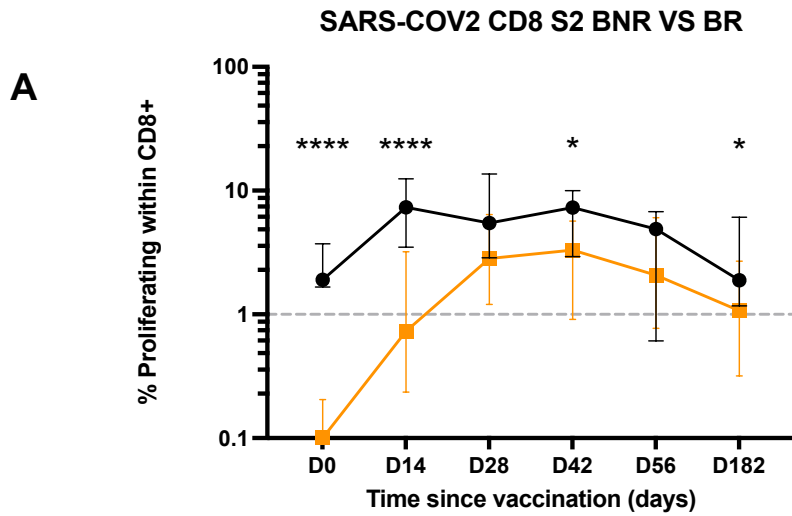
B



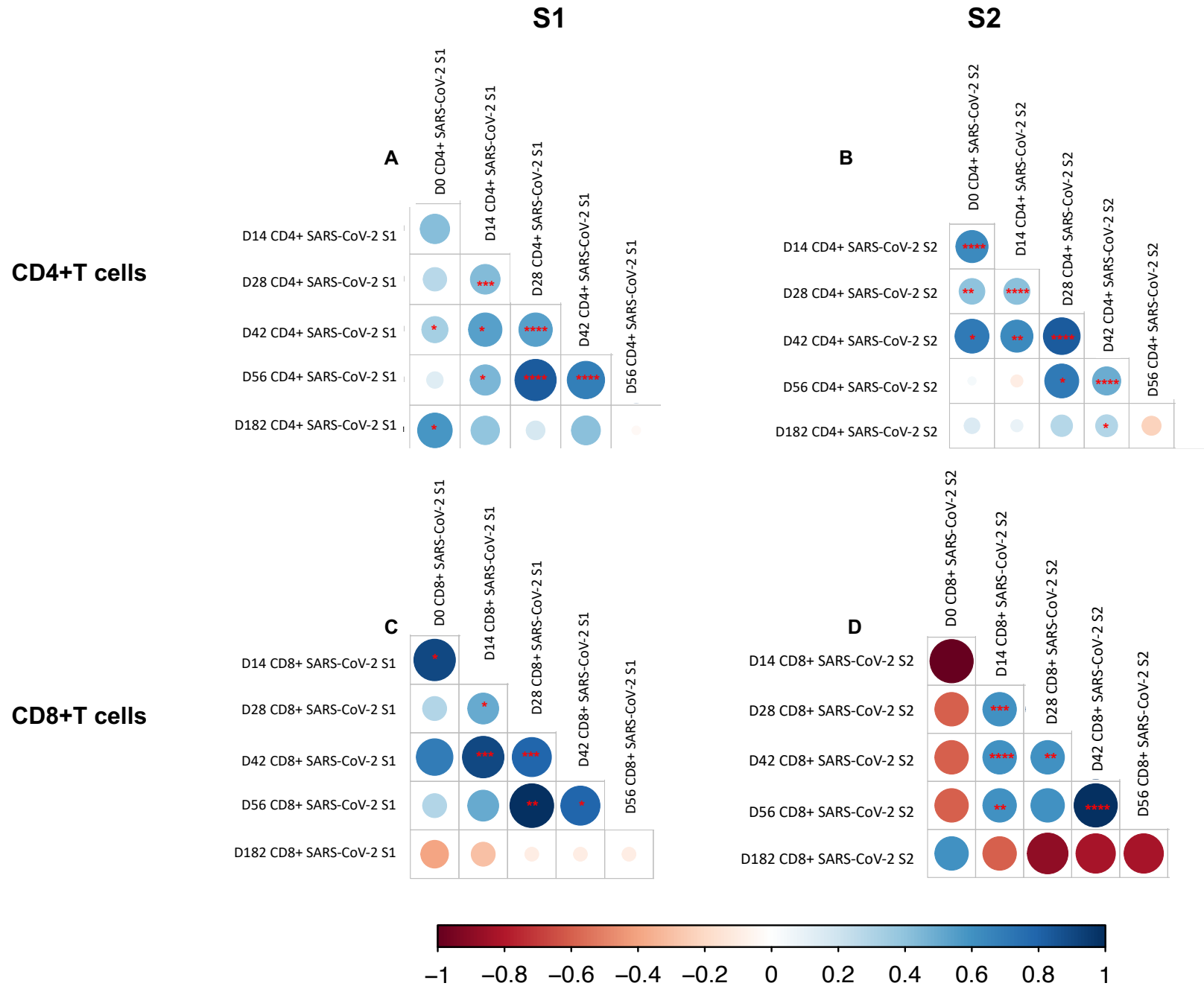
C



Supplementary figure 6 : Pre-existing cross-reactive CD8+ T cell responses in PWH measured at baseline are associated with high magnitude CD8+ T cell responses post ChAdOx1 nCoV-19 vaccination



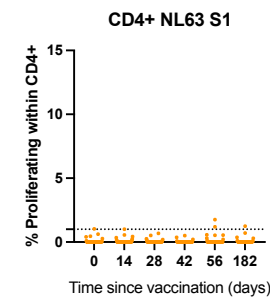
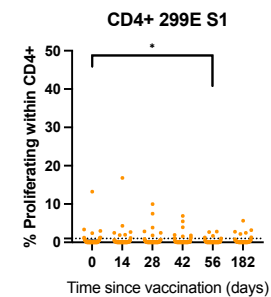
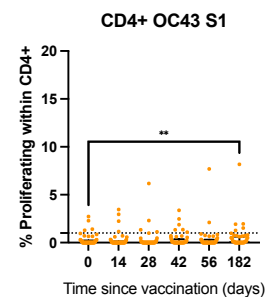
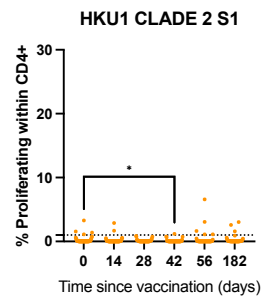
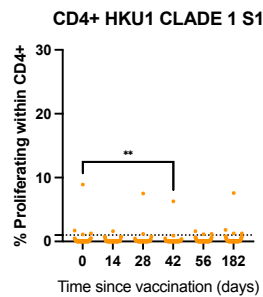
Supplementary figure 7: Relationship between baseline and post vaccination. timepoints for CD4+ and CD8+ proliferative T cells



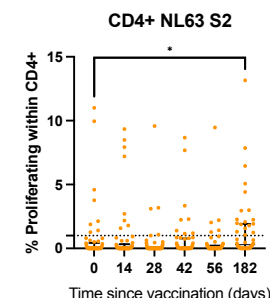
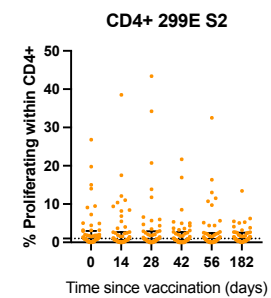
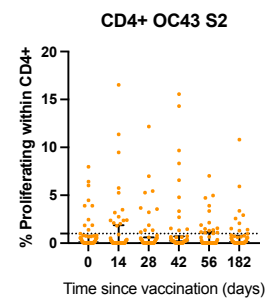
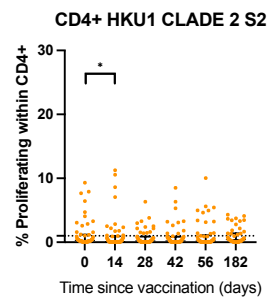
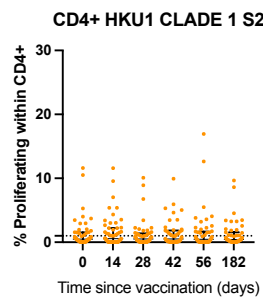
Supplementary figure 8: Responses to CCC in PWH

CD4+ T cells

S1

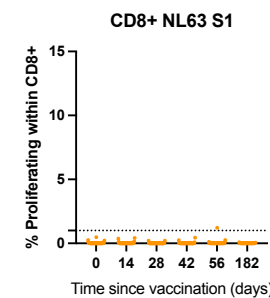
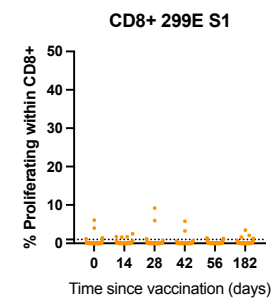
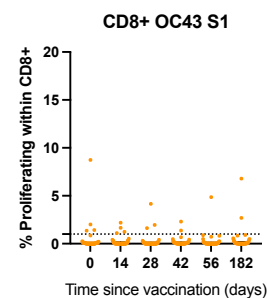
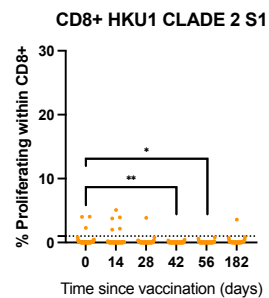
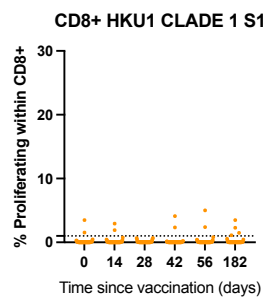


S2

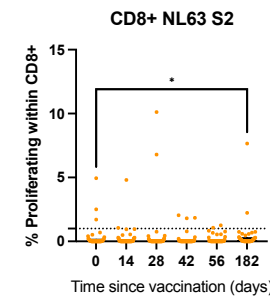
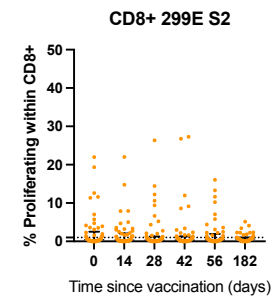
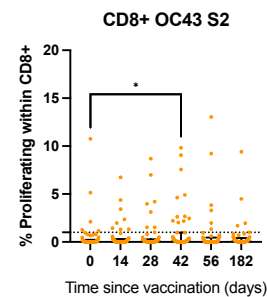
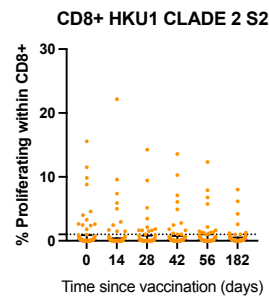
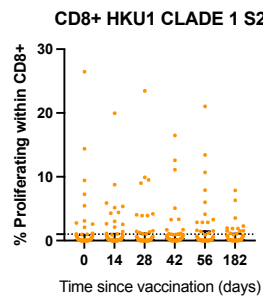


CD8+ T cells

S1



S2



Supplementary figure 9: Relationship between antibody responses for SARS-CoV-2 and CCCs spike in PWH

