

## Novel protein-altering variants associated with serum apolipoprotein and lipid levels

Niina Sandholm\*, Ronja Hotakainen\*, Jani K Haukka, Fanny Jansson Sigfrids, Emma H Dahlström, Anni Antikainen, Erkka Valo, Anna Syreeni Elina Kilpeläinen, Anastasia Kytölä, Aarno Palotie, Valma Harjutsalo, Carol Forsblom, Per-Henrik Groop, on behalf of the FinnDiane Study Group

### Supplemental material

#### Table of contents

Supplementary Table S1. Lipid, lipoprotein, apolipoprotein, and metabolite phenotypes.....	2
Supplementary Table S2: Number of PAVs and PTVs in the WES and WGS data. Counts are calculated for the total cholesterol lab measurements. ....	5
Supplementary Table S3: Single variant WES+WGS meta-analysis results for associations with $p < 1 \times 10^{-5}$ . ..	6
Supplementary Table S4: WES-WGS SKAT meta-analysis on CVD, CAD, Strokes, and DKD for the lead genes. ....	8
Supplementary Table S5: Single variant score test association results for PTVs and PAVs within the lead genes from the SKAT WES+WGS meta-analysis.....	9
Supplementary Table S6: Variant association with “Diseases of the circulatory system” phenotypes in the FinnGen GWAS data. ....	11
Supplemental Table S7. Significant associations (WES/WGS SKAT meta-analysis $p < 0.05/19$ genes= $0.0026$ ) for PTVs and PAVs in known lipid genes. ....	15
Supplementary Figure S1: WES+WGS SKAT meta-analysis results, Manhattan and QQ-plots. A: Total cholesterol. B: Apo-A1. C: Phospholipids in extra large VLDL particles. ....	18
Supplementary Figure S2: Apolipoprotein B (apoB) concentration in the three <i>APOB</i> rs1407451223 (N=2) or rs1232943044 (N=1) .....	19
References.....	20

**Supplementary Table S1. Lipid, lipoprotein, apolipoprotein, and metabolite phenotypes.**

Phenotype	Abbreviation	N WES	N WGS	Method
Serum apolipoprotein A-I [mg/dl]	APOA1	469	449	Cobas Mira analyzer (Boehringer-Mannheim) until January 2002, Wako Chemicals GmbH (Neuss, Germany) until January 2006, Konelab 60i analyser and commercial kit (Thermo Fischer Scientific, Waltham, MA, USA) from 2006 onward.
Serum apolipoprotein A-II [mg/dl]	APOA2	455	383	Cobas Mira analyzer using immunoprecipitation (Boehringer-Mannheim) until August 2001, and thereafter with a polyclonal antibody.
Serum apolipoprotein B-100 [mg/dl]	APOB	469	449	Immunoassay (Orion Diagnostica, Espoo, Finland) until January 2006, and since then with Konelab 60i analyser and a commercial kit (Thermo Fischer Scientific, Waltham, MA, USA).
Serum Apolipoprotein C-III [mg/dl]	APOC3	323	294	Immunoassay (Kamiya Biomedical Company, Tukwila, WA 98168, USA).
Serum total cholesterol [mmol/l]	CHOL CL	469	451	Autoanalyzer with an enzymatic technique (Hoffman-La Roche, Basel, Switzerland until November 2001; ABX Diagnostics, Montpellier, France until January 2006; and Konelab 60i analyser and a commercial kit (Thermo Fischer Scientific, Waltham, MA, USA) from this point onward.
Serum HDL cholesterol [mmol/l]	HDLC	469	450	Enzymatic method, described in Tolonen, Forsblom et al. 2008.
Serum HDL <sub>2</sub> cholesterol [mmol/l]	HDL2C	463	441	Calculated by subtracting of HDL <sub>3</sub> -cholesterol from the total HDL-cholesterol.
Serum HDL <sub>3</sub> cholesterol [mmol/l]	HDL3C	463	441	Enzymatic method, described in Tolonen, Forsblom et al 2008.
Serum triglycerides [mmol/l]	TG	469	451	Autoanalyzer with an enzymatic technique (Hoffman-La Roche, Basel, Switzerland until November 2001; ABX Diagnostics, Montpellier, France until January 2006; and Konelab 60i analyser and a commercial kit (Thermo Fischer Scientific, Waltham, MA, USA) from this point onward.
LDL cholesterol [mmol/l] calculated with Friedewald equation, TotalChol - (Triglyceride / 5) - HDL	LDL friedewald	469	451	Friedewald equation described in Friedewald, Levy et al. 1972.
Non-HDL cholesterol (TOTCHOL-HDLCHOL) [mmol/l]	NonHDLC	469	450	Calculated by subtracting of serum HDL-cholesterol from the serum total cholesterol.
Remnant cholesterol, TotalChol - HDL - LDL	Remnant chol	469	450	Calculated by subtracting of HDL-and LDL-cholesterol from the serum total cholesterol described in Varbo, benn et al. 2014.
Total cholesterol	CHOL	419	329	NMR
Total triglycerides	TG	419	329	NMR
VLDL particle diameter	VLDLD	115	84	NMR
LDL particle diameter	LDLD	115	84	NMR
HDL particle diameter	HDLD	115	84	NMR
Total lipids in extremely large VLDL	VLDL XXL	419	329	NMR
Phospholipid in extremely large VLDL	VLDLPL XXL	419	329	NMR
Triglycerides in extremely large VLDL	VLDLTG XXL	304	245	NMR
Total lipids in extra large VLDL	VLDL XL	419	329	NMR
Phospholipid in extra large VLDL	VLDLPL XL	258	187	NMR
Triglycerides in extra large VLDL	VLDLTG XL	419	319	NMR
Total lipids in large VLDL	VLDL L	419	319	NMR

Cholesterol in large VLDL	VLDLC L	419	319	NMR
Cholesterol ester in large VLDL	VLDLCE L	419	319	NMR
Free cholesterol in large VLDL	VLDLFC L	419	319	NMR
Phospholipid in large VLDL	VLDLPL L	419	319	NMR
Triglycerides in large VLDL	VLDLTG L	419	319	NMR
Total lipids in medium VLDL	VLDL M	419	319	NMR
Cholesterol in medium VLDL	VLDLC M	419	319	NMR
Cholesterol ester in medium VLDL	VLDLCE M	419	319	NMR
Free cholesterol in medium VLDL	VLDLFC M	419	319	NMR
Phospholipid in medium VLDL	VLDLPL M	419	319	NMR
Triglycerides in medium VLDL	VLDLTG M	419	319	NMR
Total lipids in small VLDL	VLDL	419	319	NMR
Cholesterol in small VLDL	VLDLC	419	319	NMR
Free cholesterol in small VLDL	VLDLFC	419	319	NMR
Phospholipid in small VLDL	VLDLPL	419	319	NMR
Triglycerides in small VLDL	VLDLTG	419	319	NMR
Total lipids in extra small VLDL	VLDL XS	419	319	NMR
Phospholipid in extra small VLDL	VLDLPL XS	419	319	NMR
Triglycerides in extra small VLDL	VLDLTG XS	419	319	NMR
Triglycerides in VLDL particles	VLDLTG	419	319	NMR
Total lipid in IDL particles	IDL	419	319	NMR
Cholesterol in IDL particles	IDLC	419	319	NMR
Free cholesterol in IDL particles	IDLFC	419	319	NMR
Phospholipid in IDL particles	IDLPL	419	319	NMR
Triglyceride in IDL particles	IDLTG	419	319	NMR
Total lipid in large LDL	LDL L	419	319	NMR
Cholesterol in large LDL	LDLC L	419	319	NMR
Cholesterol ester in large LDL	LDLCE L	419	319	NMR
Free cholesterol in large LDL	LDLFC L	419	319	NMR
Phospholipid in large LDL	LDLPL L	419	319	NMR
Total lipid in medium LDL	LDL M	419	319	NMR
Cholesterol in medium LDL	LDLC M	419	319	NMR
Cholesterol ester in medium LDL	LDLCE M	419	319	NMR
Phospholipid in medium LDL	LDLPL M	419	319	NMR
Total lipid in small LDL	LDL S	419	319	NMR
Cholesterol in small LDL	LDLC S	419	319	NMR
Cholesterol in LDL particles	LDLC	419	319	NMR
Total lipid in extra large HDL	HDL XL	419	319	NMR
Cholesterol in extra large HDL	HDLC XL	419	319	NMR

Cholesterol ester in extra large HDL	HDLCE XL	419	319	NMR
Free cholesterol in extra large HDL	HDLFC XL	419	319	NMR
Phospholipid in extra large HDL	HDLPL XL	419	319	NMR
Triglyceride in extra large HDL	HDLTG XL	419	319	NMR
Total lipid in large HDL	HDL L	419	319	NMR
Cholesterol in large HDL	HDLC L	419	319	NMR
Cholesterol ester in large HDL	HDLCE L	419	319	NMR
Free cholesterol in large HDL	HDLFC L	419	319	NMR
Phospholipid in large HDL	HDLPL L	419	319	NMR
Total lipid in medium HDL	HDL M	419	319	NMR
Cholesterol in medium HDL	HDLC M	419	319	NMR
Cholesterol ester in medium HDL	HDLCE M	419	319	NMR
Free cholesterol in medium HDL	HDLFC M	419	319	NMR
Phospholipid in medium HDL	HDLPL M	419	319	NMR
Total lipid in small HDL	HDL S	419	319	NMR
Triglycerides in small HDL	HDLTG S	419	319	NMR
Cholesterol in HDL particles	HDLC	419	319	NMR
Total fatty acids (mmol/l)	FA	158	118	NMR
Free cholesterol (mmol/l)	FCHOL	158	118	NMR
Total triglycerides (mmol/l)	TG2	155	115	NMR
Esterified cholesterol (mmol/l)	ECHOL	158	118	NMR
Total phosphoglycerides (mmol/l)	PGLYC	143	110	NMR
Phosphatidylcholine and other cholines (mmol/l)	PPCHO	143	110	NMR
Sphingomyelins (mmol/l)	SMYEL	132	106	NMR
Total cholines and other N-trimethyl compounds (mmol/l)	CHO	122	91	NMR
Histidine	HISTIDINE	112	87	NMR
Isoleucine	ISOLEUCINE	419	346	NMR
Leucine	LEUCINE	116	88	NMR
Phenylalanine	PHENYLALAN	115	88	NMR
Tyrosine	TYROSINE	114	88	NMR
Valine	VALINE	419	345	NMR
Alanine	ALANINE	419	346	NMR
3-hydroxybutyrate	3HYDXBUT	418	346	NMR
Acetoacetate	ACETOACET	417	346	NMR

---

N: Number of patients in WES and WGS cohorts. NMR: Nuclear Magnetic Resonance.

**Supplementary Table S2: Number of PAVs and PTVs in the WES and WGS data. Counts are calculated for the total cholesterol lab measurements.**

	N	PAV			PTV		
		MAF=50%	MAF=5%	MAF=1%	MAF=50%	MAF=5%	MAF=1%
<b>WGS</b>	451	101,718	80,700	65,534	9,577	7,866	6,497
<b>WES</b>	469	42,682	34,881	27,257	2,240	2,009	1,749
<b>meta</b>	920	115,923	97,159	82,428	7,554		
		<b>proportion of PAV</b>		<b>proportion of PAV</b>	<b>Proportion of PTV</b>		
<b>WGS</b>		79 %	64 %	9 %	82 %	68 %	
<b>WES</b>		82 %	64 %	5 %	90 %	78 %	
<b>meta</b>		84 %	71 %	7 %			

PTV= Protein-truncating variant. PAV= Protein-altering variant.

**Supplementary Table S3: Single variant WES+WGS meta-analysis results for associations with  $p < 1 \times 10^{-5}$**

Gene	Variant	MAF	Phenotype	P	Effect	Dir	P GWAS
CAPZB	1:19448881:G:A (rs79308175,missense)	0.013	TG	$7.2 \times 10^{-6}$	Benign,	?-	0.41
			VLDLPL M	$5.9 \times 10^{-6}$	Possibly deleterious	?-	0.33
			VLDLTG XS	$7.2 \times 10^{-6}$		?-	0.32
			VLDLTG S	$4.0 \times 10^{-6}$		?-	0.41
PGLYRP4	1:153341637:G:T (rs73014502,missense)	0.002	HDLC	$8.7 \times 10^{-6}$	Benign, Tolerated	--	0.76
SERPINI2	3:167467090:T:C (rs9841174, missense)	0.467	HDLD	$2.9 \times 10^{-6}$	Possibly damaging Deleterious	++	0.051
RBM47	4:40432687: AGCGGCTGCGGCGGCTGCGGCC:A	0.005	APOC3	$2.5 \times 10^{-6}$	unknown	?-	0.08
NOCT	4:139045355:G:A (rs144899070, missense)	0.005	Total Cholesterol	$3.8 \times 10^{-6}$	Benign, Tolerated	++	0.63
PPIC	5:123023945:T:C (rs451195, missense)	0.156	HDLFC L	$5.0 \times 10^{-6}$	Benign Deleterious	?+	0.87
CFAP206	6: 87415755:A:G (rs35978098, missense)	0.005	HDLC	$3.6 \times 10^{-6}$	Probably damaging, Tolerated	?+	0.99
SBDS	7:66994210:A:G (rs113993993, splice donor)	0.005	APOC3	$5.9 \times 10^{-6}$	<b>Pathogenic</b> (ClinVar)	?+	0.19
DEFT1P	8:6989658: C:T (rs797006828, splice-donor)	0.020	VLDLPL XL	$1.2 \times 10^{-6}$	Unknown	?+	-
NRG1	8:32754452:G:T (rs74942016, missense)	0.015	LDLPL M	$9.0 \times 10^{-6}$	Possibly damaging, Deleterious	++	0.62
IFNW1	9:21141554:G:C (rs201154486, missense)	0.005	HDLTG XL	$3.7 \times 10^{-6}$	Benign, Deleterious	++	0.43
GTF3C5	9:133054787:C:T (rs202207045, missense)	0.007	LDL Friedewald,	$1.3 \times 10^{-6}$	Benign,	--	<b>0.02 (-)</b>
			Non-HDLC	$7.3 \times 10^{-7}$	Tolerated	--	<b>0.02 (-)</b>
			Total Cholesterol	$1.2 \times 10^{-6}$		--	0.11
TET1	10:68572915:T:A (rs12773594, missense)	0.091	LDL M	$8.3 \times 10^{-6}$	Benign, Tolerated	?-	0.57
ANO9	11:433867:G:A (rs12575508, missense)	0.185	HDLC	$5.7 \times 10^{-6}$	Benign, Tolerated	++	0.33
OVCH1	12:29464617:G:A (rs11050243, missense)	0.191	Remnant	$2.9 \times 10^{-6}$	Possibly damaging, Deleterious	++	0.83
FNDC3A	13:49201861:A:G (rs45604939, missense)	0.064	CHOL CL	$8.8 \times 10^{-6}$	Benign,	++	<b>0.04 (+)</b>
			HDLPL M	$5.2 \times 10^{-6}$	Deleterious	++	0.03 (-)
			LDLPL L	$5.7 \times 10^{-6}$		++	0.64
			VLDL S	$8.0 \times 10^{-6}$		++	0.22
			VLDL XS	$6.1 \times 10^{-6}$		++	0.45
			VLDLFC S	$7.0 \times 10^{-6}$		++	0.40
SYNE3	14:95417986:G:A (rs12434757,missense)	0.650	IDLC	$9.0 \times 10^{-6}$	Benign, Tolerated	++	0.64
GABRG3	15:27271593: GAGTC:G (5' UTR variant in 2 alternative transcripts)	0.299	VLDL XL	$4.9 \times 10^{-6}$	Unknown	?-	0.19
			VLDLTG XL	$4.1 \times 10^{-6}$		?-	0.21
LIPC	15:58563549:C:T (rs113298164, missense)	0.017	APOA1	$7.8 \times 10^{-8}$	Probably damaging Deleterious	++	0.89
METTL16	17: 2475244:T:G (rs2028600, missense)	0.068	LDLPL L	$8.2 \times 10^{-6}$	Benign, Tolerated	?-	0.96
MARCH10	17:62736189:G:A (rs147046907, missense)	0.003	IDLFC	$9.3 \times 10^{-6}$	Possibly damaging,	--	0.90
			IDLPL	$7.4 \times 10^{-6}$	Deleterious	--	1.00
			LDLPL M	$7.5 \times 10^{-6}$		--	0.63
			VLDL M	$6.9 \times 10^{-6}$		--	0.73
			VLDLFC M	$1.2 \times 10^{-6}$		--	0.67
			VLDLPL M	$1.6 \times 10^{-6}$		--	0.59
			VLDLPL_XS	$1.1 \times 10^{-6}$		--	0.76
MYO15B	17:75591977:G:T (rs736522, missense)	0.252	HDLTG S	$1.4 \times 10^{-6}$	Possibly damaging Tolerated	++	0.95
OR7A10	19:14841426:A:G (rs12972670, missense)	0.149	Tyrosine	$3.7 \times 10^{-6}$	Benign, Tolerated	++	0.77
ZNF274	19: 58206912:A:G (rs45580533, missense)	0.021	VLDL L	$9.3 \times 10^{-6}$	Benign,	?-	0.87
			VLDLTG L	$5.5 \times 10^{-6}$	Tolerated		0.81
LBP	20:38346542:C:T (rs2232580, missense)	0.052	LDL Friedewald	$4.9 \times 10^{-6}$	Benign, Tolerated	++	0.49

Gene	Variant	MAF	Phenotype	P	Effect	Dir	P GWAS
<i>AP000233.3</i>	21:25135053:C:T (rs2829553, splice-donor)	0.223	APOA1	$2.1 \times 10^{-6}$	<b>Low confidence pLoF</b>	?-	0.25
<i>KRTAP13-1</i>	21:30396529:G:A (rs151147550,missense)	0.007	APOC3	$4.9 \times 10^{-6}$	Benign, Tolerated	++	0.76

MAF: Minor allele frequency, Effect: SIFT and Polyphen-2 predictions of the effect of the variant. P SKAT/SKATO: P-value of the SKAT or SKAT-O association test. Dir: Effect direction (for ALT allele) in WES and WGS, respectively. P GWAS: P-value from GWAS analysis, with direction of effect (+/-) indicated for associations with p-value <0.05. Associations with p-value < 0.05 and consistent direction of effect are highlighted with bold.

**Supplementary Table S4: WES-WGS SKAT meta-analysis on CVD, CAD, Strokes, and DKD for the lead genes.**

<b>GENE</b>	<b>N VAR</b>	<b>AVG_AF</b>	<b>P CVD</b>	<b>P CAD</b>	<b>P Stroke</b>	<b>P DKD</b>
<b>PAV</b>						
<i>RBM47</i>	4	0.002	0.444	1.000	0.148	0.332
<i>CYP3A43</i>	7	0.005	0.360	0.091	0.675	<b>0.004</b>
<i>GTF3C5</i>	9	0.002	0.066	0.270	0.465	0.844
<i>AKAP3</i>	10	0.015	0.733	0.599	0.827	0.822
<i>TRMT5</i>	8	0.003	0.307	0.567	0.610	0.736
<i>LIPC</i>	6	0.017	0.325	0.726	0.508	0.658
<b>PTV</b>						
<i>PTGER3</i>	1	0.010	0.672	0.278	0.157	0.476
<i>SBDS</i>	3	0.002	0.595	0.276	0.536	0.061
<i>DEFT1P/ DEFT1P2</i>	1	0.024	0.448	0.197	0.707	0.265

N Var: number of PAV/ PTV variants with MAF  $\leq$  5% within the gene. AVG\_AF: average allele frequency of the variants. P CVD/ CAD/ Stroke/ DKD: WES-WGS SKAT meta-analysis P-value.



**Supplementary Table S5: Single variant score test association results for PTVs and PAVs within the lead genes from the SKAT WES+WGS meta-analysis.**

GENE	WES+WGS SKAT meta-analysis					WES+WGS meta			GWAS			
	Type	Pheno	P_LIU	Variants	MAF	EFFECT	P-values	N	AF	Effect	P	
<i>DEFT1P/</i> <i>DEFT1P2</i>	PTV	VLDLPL XL	1.23E-06	8:6989658:C:T (rs797006828, splice donor variant )	0.020	1.157	<b>1.23E-06</b>					
<i>SBDS</i>	PTV	apoC-III	5.37E-06	7:66994210:A:G (rs113993993, splice donor variant); 7:66994286:T:A (rs113993991, stop gain)	0.005 0.001	1.865 0.603	<b>5.86E-06</b> 0.55	2982	0.008	0.22	0.19	
<i>LIPC</i>	PAV	apoA1	1.48E-07	15:58541794:G:A (rs6078*); 15:58541843:C:T (rs562988299*); 15:58541944:G:A (rs201563586*); 15:58548387:C:T (rs121912502*); 15:58560880:A:C (rs3829462*); 15:58563549:C:T (rs113298164*)	0.032 0.001 0.001 0.001 0.045 0.017	0.171 0.877 1.794 0.937 0.001 0.980	0.20 0.38 0.07 0.35 0.99 <b>7.77E-08</b>	3759 3759 3759 3759 3759	0.058 0.002 0.0002 0.046 0.058	0.04 0.12 2.56 0.12 0.01	0.41 0.67 <b>0.04**</b> <b>0.02</b> 0.89	
<i>GTF3C5</i>	PAV	Non-HDLC	6.86E-07	9:133042147:C:T (-) ; 9:133043731:T:C (rs189383196, start lost, missense); 9:133043838:C:A (rs150056568)*; 9:133054459:A:G (rs369889499)*; 9:133054733:A:G (rs1302997790)*; 9:133054787:C:T (rs202207045)*; 9:133056848:G:A (rs637435)*; 9:133057819:T:C (rs111893665)*	0.001 0.004 0.001 0.001 0.001 0.007 0.001 0.001	0.596 0.311 0.017 -0.392 0.840 -1.382 -0.596 -0.120	0.55 0.38 0.98 0.58 0.40 <b>7.26E-07</b> 0.55 0.90	4636 4636 4636 4636	0.010 0.003 0.001 0.008	0.14 0.18 -0.08 -0.28	0.17 0.33 0.84 <b>0.02</b> 0.60	
<i>GTF3C5</i>	PAV	LDL Friedewald	9.27E-07	9:133042147:C:T (-) ; 9:133043731:T:C (rs189383196, start lost, missense); 9:133043838:C:A (rs150056568)*; 9:133054459:A:G (rs369889499)*; 9:133054733:A:G (rs1302997790)*; 9:133054787:C:T (rs202207045)*; 9:133056848:G:A (rs637435)*; 9:133057819:T:C (rs111893665)*	0.001 0.003 0.001 0.001 0.001 0.007 0.001 0.001	0.642 -0.309 0.100 -0.302 0.956 -1.350 -0.690 -0.131	0.52 0.45 0.89 0.67 0.34 <b>1.31E-06</b> 0.49 0.90	4584 4584 4584 4584	0.010 0.003 0.001 0.008	0.16 0.19 -0.01 -0.28	0.11 0.31 0.99 <b>0.02</b> 0.83	
<i>GTF3C5</i>	PAV	CHOL CL	1.30E-06	9:133042147:C:T (-) ; 9:133043731:T:C (rs189383196, start lost, missense); 9:133043838:C:A (rs150056568)*; 9:133054459:A:G (rs369889499)*; 9:133054733:A:G (rs1302997790)*; 9:133054787:C:T (rs202207045)*; 9:133056848:G:A (rs637435)*; 9:133057819:T:C (rs111893665)*	0.001 0.004 0.001 0.001 0.001 0.007 0.001 0.001	1.113 0.253 -0.003 -0.344 0.671 -1.353 -0.885 0.248	0.27 0.48 1.00 0.63 0.50 <b>1.23E-06</b> 0.38 0.80	4653 4653 4653 4653	0.010 0.003 0.001 0.008	0.12 0.18 -0.10 -0.18	0.23 0.35 0.78 0.11 0.32	
<i>TRMT5</i>	PAV	VLDLPL XS	7.87E-07	14:60975180:G:A (rs147405788)*;	0.001	-1.575	0.03	1466	0.002	-0.08	0.82	

				14:60975182:T:C (-)*;	0.001	-1.386	0.17					
				14:60975636:G:A (rs45604437*);	0.007	-1.094	<b>5.76E-04</b>	1466	0.003	-0.23	0.53	
				14:60979242:T:C (rs138139551*);	0.002	-0.599	0.30	1466	0.003	-0.04	0.91	
				14:60979257:T:C (rs191207997*);	0.001	-0.713	0.48	1466	0.001	-0.36	0.53	
				14:60979303:C:G (rs1285433520)*;	0.001	0.400	0.69					
				14:60979401:G:A (rs746471581*);	0.001	1.362	0.17					
				14:60979429:T:A (rs115400838)*	0.007	-1.211	<b>1.59E-04</b>	1466	0.013	-0.05	0.75	
<i>RBM47</i>	PAV	apoC-III	1.33E-06	4:40426074:C:T (rs35529250)*;	0.001	-1.020	0.31	2982	0.005	0.06	0.76	
				4:40432687:AGCGGCTGCGGCGGCTGCGGCC:A (rs564837143, in frame deletion)	0.005	-1.938	<b>2.50E-06</b>	2982	0.008	0.26	0.08	
				4:40438508:C:T (rs373211767*)	0.002	0.817	0.25	2982	0.001	0.52	0.23	

P\_LIU: P-value for SKAT meta-analysis gene test. Variants: Variants within the gene that contributed to the SKAT meta-analysis (i.e. all PTVs or PAVs within the gene. Annotation includes chr:pos:REF:ALT alleles, rs number if known, and consequence. \*indicates nonsynonymous missense mutation. MAF: Minor allele frequency for each variant; Effect and P-value: beta effect size estimate and p-value from score test meta-analysis. GWAS: N, Allele frequency (AF), Effect size and P-value for the variants in the non-overlapping GWAS data. P-values <0.05 (not corrected for multiple testing) are highlighted in bold.

VLDLPL XL: Phospholipid in extra large VLDL, VLDLPL XS: Phospholipid in extra small VLDL, apoC-III: Serum Apolipoprotein C-III, apoA1: Serum apolipoprotein A-I [mg/dl], CHOL CL: Total Cholesterol, LDL Friedewald: LDL cholesterol calculated with Friedewald equation. Non-HDLC: Non-HDL cholesterol.

\*\*LIPC rs121912502 was imputed with low imputation quality, INFO 0.37

**Supplementary Table S6: Variant association with “Diseases of the circulatory system” phenotypes in the FinnGen GWAS data.**

GENE: Pheno	VARs	Effect	rsID	MAFs	EFF	P-values	SIFT	PolyPhen	FinEnr	phenotype	beta	p-value	N
<i>DEFTIP/</i> <i>DEFTIP2:</i> VLDLPL XL	8:6989658:C:T	Splice donor	rs797006828	0.020	1.157	<b>1.23E-06</b>	-	-	-				
<i>SBDS:</i> APOC3	7:66994210:A:G	Splice donor	rs113993993	0.005	1.865	<b>5.86E-06</b>	-	-	2.27	Hypertension complicating pregnancy, childbirth, and the puerperium	0.26	1.60E-02	6120 / 94241
										Varicose veins	-0.19	2.10E-02	13928 / 153951
										Vascular dementia	0.7	2.50E-02	706 / 171075
										Sequelae of cerebrovascular disease	0.31	3.00E-02	3520 / 165040
										Aortic aneurysm	-0.41	3.40E-02	1919 / 167843
										Secondary right heart disease	0.94	3.60E-02	315 / 173597
										Diseases of veins, lymphatic vessels and lymph nodes, not elsewhere classified	-0.13	4.80E-02	22948 / 153951
	7:66994286:T:A	K/*	rs120074160	0.001	0.603	0.55	-	-	-				
<i>LIPC:</i> APOA1	15:58541794:G:A	V/M	rs6078	0.032	0.171	0.20	1	0.01	1.79	Venous thromboembolism	-0.11	4.00E-03	6913 / 169986
										DVT of lower extremities and pulmonary embolism	-0.12	5.50E-03	6019 / 170880
										Pulmonary heart disease, diseases of pulmonary circulation	-0.13	1.90E-02	3302 / 173597
										Aneurysms, operations, SAH	-0.18	2.40E-02	1582 / 165040
										Other diseases of arteries and capillaries	0.21	2.90E-02	1046 / 167843
										Cardiomyopathy, other and unspecified	-0.22	3.00E-02	971 / 129908
										Pulmonary embolism	-0.12	3.50E-02	3016 / 173597
										Cerebral aneurysm, nonruptured	-0.25	3.70E-02	720 / 165040
										Nontraumatic intracranial haemorrhage	-0.15	3.80E-02	2086 / 165040
										Other peripheral vascular diseases	-0.23	4.30E-02	799 / 167843
	15:58541843:C:T	P/L	rs562988299	0.001	0.877	0.38	0.31	0					
	15:58541944:G:A	A/T	rs201563586	0.001	1.794	0.07	0.01	0.97	None	Non-rheumatic valve diseases	-0.48	2.10E-02	7440 / 129908
										Other other unspecified disorders of the circulatory system	1.9	3.00E-02	340 / 175178
										Aortic aneurysm	-0.78	4.20E-02	1919 / 167843
	15:58548387:C:T	S/F	rs121912502	0.001	0.937	0.35	0	0.987	0.20	Intracerebral haemorrhage	2.6	7.80E-03	1224 / 163533
										Transient ischemic attack	0.96	9.20E-03	6729 / 164286
										Other intracranial haemorrhages	6.1	1.20E-02	230 / 165040
										Cardiomyopathy, other and unspecified	2.2	2.10E-02	971 / 129908
										Nontraumatic intracranial haemorrhage	1.3	3.10E-02	2086 / 165040
	15:58560880:A:C	F/L	rs3829462	0.045	0.001	0.99	-	-	0.96	Other or ill-defined heart diseases	0.33	1.3e-2	583 / 129908
										Other pulmonary heart/vessel disease	-0.37	2.9e-2	363 / 173597
										Secondary right heart disease	-0.39	3.5e-2	315 / 173597
										Phlebitis and thrombophlebitis (not including DVT)	-0.14	4.2e-2	2506 / 153951
	15:58563549:C:T	T/M	rs113298164	0.017	0.980	<b>7.77E-08</b>	0.02	0.996	4.41	Secondary hypertension	0.36	4.90E-02	982 / 133323

<i>GTF3C5:</i>									
Non-HDLC	9:133042147:C:T	H/Y	-	0.001	0.596	0.55	0	0.998	
	9:133043731:T:C	Start lost; M/T	rs189383196	0.004	0.311	0.38	0	0.932	84.2 Non-ischemic cardiomyopathy
									Hypertension
									Hypertensive diseases
									Cardiovascular diseases
									Statin medication
									DVT of lower extremities
									All-cause Heart Failure
									Secondary right heart disease
									Venous thromboembolism
									Heart failure, not strict
									Hypertension, essential
									Phlebitis and thrombophlebitis (not including DVT)
									Other heart diseases
									Peripheral artery operations in Hilmo
									Conduction disorders
									Other pulmonary heart/vessel disease
									Diseases of arteries, arterioles and capillaries (FINNGEN)
									Diseases of veins, lymphatic vessels and lymph nodes, not elsewhere classified
									Atrial fibrillation and flutter
									Diseases of arteries, arterioles and capillaries
	9:133043838:C:A	Q/K	rs150056568	0.001	0.017	0.98	0.08	0.755	2.30 Non-ischemic cardiomyopathy
									Nonischemic cardiomyopathy
									Other diseases of arteries and capillaries
									Transient ischemic attack
									Nonspecific lymphadenitis
									Ischaemic Stroke, excluding all haemorrhages
									Cardiomyopathy
	9:133054459:A:G	Y/C	rs369889499	0.001	-0.392	0.58	0	0.993	None Angina pectoris
									Ischaemic heart disease, wide definition
									Unstable angina pectoris
									Ischemic heart diseases
									Cardiomyopathies, Primary/intrinsic
									Other diseases of pericardium
									Cardiomyopathy, Hypertrophic obstructive
									Coronary revascularization (ANGIO or CABG)
									Myocarditis
									Other CVD (FINNGEN)

									Other disorders of veins	-0.88	2.10E-02	4588 / 153951	
									Valvular operations	0.39	2.30E-02	26015 / 129908	
									Valvular heart disease including rheumatic fever	0.38	2.30E-02	27684 / 129908	
									Cardiomyopathy	1	3.00E-02	2342 / 129908	
									Left bundle-branch block	2.4	3.20E-02	582 / 129908	
									Cardiovascular diseases	0.29	3.60E-02	86957 / 89942	
									Coronary atherosclerosis	0.51	3.70E-02	18295 / 152621	
									Hypertrophic cardiomyopathy	2.2	3.80E-02	432 / 176467	
									Endocarditis	2.7	4.70E-02	312 / 129908	
									Heart failure,strict	0.54	4.80E-02	9576 / 159286	
									Hypertension	0.33	4.90E-02	43545 / 133323	
	9:133054733:A:G	H/R	rs1302997790	0.001	0.840	0.40	0.5	0.011					
	9:133054787:C:T	A/V	rs202207045	0.007	-1.382	<b>7.26E-07</b>	0.24	0.03	None	Vascular dementia	-0.76	2.10E-02	706 / 171075
	9:133056848:G:A	D/N	rs637435	0.001	-0.596	0.55	0.04	0.833					
	9:133057819:T:C	F/L	rs111893665	0.001	-0.120	0.90	0.27	0.914	0.152*	Other peripheral vascular diseases	2.9	1.00E-02	799 / 167843
										Paroxysmal tachycardia	-1.1	2.10E-02	3667 / 97214
<i>TRMT5:</i>										Type 2 diabetes with peripheral circulatory complications	-1.1	3.40E-02	820 / 148190
VLDLPL_XS	14:60975180:G:A	P/S	rs147405788	0.001	-1.575	0.03	0	0.88	6.24	Cardiomyopathy, Hypertrophic obstructive	1.7	3.60E-02	251 / 129908
	14:60975182:T:C	D/G	-	0.001	-1.386	0.17	0.1	0.001					
	14:60975636:G:A	A/V	rs45604437	0.007	-1.094	<b>5.76E-04</b>	0.16	0	2.73	Other peripheral vascular diseases	1.1	4.90E-03	799 / 167843
										Phlebitis and thrombophlebitis (not including DVT)	0.5	1.90E-02	2506 / 153951
										Sequelae of cerebrovascular disease	-0.44	2.10E-02	3520 / 165040
										Hypertensive Renal Disease	1.2	2.60E-02	373 / 133323
										Stroke, excluding SAH	-0.25	4.60E-02	8877 / 163535
										Stroke, including SAH	-0.23	4.90E-02	9592 / 162861
	14:60979242:T:C	K/R	rs138139551	0.002	-0.599	0.30	0.2	0.253	None	Other noninfective disorders of lymphatic vessels and lymph nodes	2.8	3.00E-03	301 / 153951
										Left bundle-branch block	1.6	1.30E-02	582 / 129908
										Occlusion and stenosis of arteries, not leading to stroke	2.7	2.50E-02	147 / 165040
										DVT of lower extremities	-0.58	2.70E-02	3592 / 153951
										Status post-ami	0.96	2.70E-02	1141 / 152621
										Hypertensive Renal Disease	1.8	3.40E-02	373 / 133323
										Conduction disorders	0.57	3.70E-02	3271 / 129908
	14:60979257:T:C	H/R	rs191207997	0.001	-0.713	0.48	0.05	0.27	3.12	Hypertensive Heart Disease	0.95	1.40E-02	3252 / 133323
										Non-rheumatic valve diseases	0.62	1.50E-02	7440 / 129908
	14:60979303:C:G	G/R	rs1285433520	0.001	0.400	0.69	0	0.588					
	14:60979401:G:A	P/L	rs746471581	0.001	1.362	0.17	0.02	0.031					

14:60979429:T:A	S/C	rs115400838	0.007	-1.211	<b>1.59E-04</b>	<b>0.03</b>	<b>0.375</b>	6.99	Stroke, excluding SAH	0.24	1.90E-04	8877 / 163535	
									Stroke, including SAH	0.22	3.70E-04	9592 / 162861	
									Sequelae of cerebrovascular disease	0.35	5.40E-04	3520 / 165040	
									Ischaemic Stroke, excluding all haemorrhages	0.23	6.00E-04	8046 / 164286	
									Cerebrovascular diseases	0.18	1.60E-03	11859 / 165040	
									Cerebrovascular diseases (FINNGEN)	0.17	1.40E-02	10367 / 97214	
									Arterial embolism and thrombosis	0.58	1.50E-02	580 / 167843	
									Rheumatic fever incl heart disease	0.56	3.30E-02	462 / 176437	
									Valvular operations	0.087	3.50E-02	26015 / 129908	
<i>RBM47:</i> APOC3	4:40426074:C:T	G/R	rs35529250	0.001	-1.020	0.31	<b>0</b>	<b>0.905</b>	0.81	Cardiomyopathy, Hypertrophic obstructive	2.3	2.10E-03	251 / 129908
										Hypertrophic cardiomyopathy	1.4	7.30E-03	432 / 176467
										Hypertension, essential	-0.18	1.60E-02	33229 / 133323
										Hypertensive diseases	-0.17	1.90E-02	43576 / 133323
										Hypertension	-0.17	1.90E-02	43545 / 133323
										Phlebitis and thrombophlebitis (not including DVT)	-0.45	2.30E-02	2506 / 153951
										Diseases of veins, lymphatic vessels and lymph nodes, not elsewhere classified	-0.17	3.50E-02	22948 / 153951
										Stroke, excluding SAH	-0.24	3.70E-02	8877 / 163535
										Ischaemic Stroke, excluding all haemorrhages	-0.24	4.30E-02	8046 / 164286
4:40432687:AGC GGCTGCGGCGG CTGCGGCC:A	AAAAAAA/A	rs564837143	0.005	-1.938	<b>2.50E-06</b>	-	-			Secondary hypertension	-0.65	1.10E-02	982 / 133323
										Other peripheral vascular diseases	-0.58	3.50E-02	799 / 167843
4:40438508:C:T	R/H	rs373211767	0.002	0.817	0.25	<b>0.03</b>	<b>0.891</b>	None	Vascular syndromes of brain in cerebrovascular disorders	3.4	6.90E-03	458 / 170687	
									Angina pectoris	0.58	1.20E-02	14712 / 152621	
									Aortic aneurysm	1.1	2.80E-02	1919 / 167843	
									Status post-ami	1.4	2.80E-02	1141 / 152621	
									Other specified cerebrovascular diseases, other cerebrovascular disorders in diseases classified elsewhere	1.9	3.10E-02	729 / 165040	
									Other aneurysm	2.1	4.00E-02	444 / 167843	

**Supplemental Table S7. Significant associations (WES/WGS SKAT meta-analysis  $p < 0.05/19$  genes = 0.0026) for PTVs and PAVs in known lipid genes.**

GENE		Variants	Pheno	MAFs	SINGLEVAR EFFECTs	SINGLEVAR PVALUES	P-VALUE	Classification
<i>APOB</i>	PTV	2:21007222:AT:A (rs1232943044, frameshift) 2:21011037:TGA:T (rs1407451220, frameshift)	LDL Friedewald	0.0006 0.001	-0.46 -2.4	0.64 0.001	0.001	Likely Pathogenic (PVS1, PM2) Likely Pathogenic (PVS1, PM2)
<i>APOB</i>	PTV	2:21007222:AT:A (rs1232943044, frameshift) 2:21011037:TGA:T (rs1407451220, frameshift)	Non-HDLC	0.0005 0.001	-0.64 -2.51	0.52 0.0004	0.0005	Likely Pathogenic (PVS1, PM2) Likely Pathogenic (PVS1, PM2)
<i>APOB</i>	PTV	2:21007222:AT:A (rs1232943044, frameshift) 2:21011037:TGA:T (rs1407451220, frameshift)	APOB	0.0005 0.001	-1.63 -2.36	0.10 0.001	0.0006	Likely Pathogenic (PVS1, PM2) Likely Pathogenic (PVS1, PM2)
<i>APOB</i>	PTV	2:21007222:AT:A (rs1232943044, frameshift) 2:21011037:TGA:T (rs1407451220, frameshift)	VLDLTG S	0.0007 0.001	-1.19 -2.32	0.23 0.001	0.001	Likely Pathogenic (PVS1, PM2) Likely Pathogenic (PVS1, PM2)
<i>PCSK9</i>	PAV	1:55039974:G:T(rs11591147*) 1:55039995:C:T(rs11583680*) 1:55052701:C:T(rs148195424*)	LDL Friedewald	0.02 0.05 0.001	-0.56 -0.10 -1.14	0.001 0.37 0.11	0.001	Benign (BP6, BS1, BS2, BP1) Benign (BA1, BP6, BP4, BP1) Benign (BS1, BS2, PP3, BP6, BP1)
<i>PCSK9</i>	PAV	1:55039974:G:T(rs11591147*) 1:55039995:C:T(rs11583680*) 1:55052701:C:T(rs148195424*)	Non-HDLC	0.02 0.05 0.001	-0.61 -0.07 -0.93	0.0004 0.55 0.19	0.0005	Benign (BP6, BS1, BS2, BP1) Benign (BA1, BP6, BP4, BP1) Benign (BS1, BS2, PP3, BP6, BP1)
<i>PCSK9</i>	PAV	1:55039974:G:T(rs11591147*) 1:55039995:C:T(rs11583680*) 1:55052701:C:T(rs148195424*)	Total CHOL	0.02 0.05 0.001	-0.64 -0.06 -0.44	0.0002 0.63 0.54	0.0003	Benign (BP6, BS1, BS2, BP1) Benign (BA1, BP6, BP4, BP1) Benign (BS1, BS2, PP3, BP6, BP1)
<i>PCSK9</i>	PAV	1:55039974:G:T(rs11591147*) 1:55039995:C:T(rs11583680*)	Isoleucine	0.02 0.04	-0.75 0.15	0.0003 0.25	0.0003	Benign (BS2, BP6, BP4, BP1, BS1) Benign (BP4, BA1, BP6, BP1)
<i>LIPC</i>	PAV	15:58541794:G:A (rs6078*) 15:58541843:C:T(rs562988299*) 15:58541944:G:A(rs201563586*) 15:58548387:C:T(rs121912502*) 15:58560880:A:C* 15:58563549:C:T(rs113298164*)	APOA1	0.03 0.0006 0.006 0.0006 0.05 0.02	0.17 0.88 1.80 0.94 0.001 0.98	0.20 0.38 0.07 0.35 0.99 7.78E-08	1.48E-07	Benign (BA1, BP4, BP1, BP6) Likely Benign (PM2, BP1, BP4) VUS (PM2, PP3, BP1) VUS (PP3, PM2, PP5, BP1) - Benign (BS1, BS2, BP1, PP3, PP5)
<i>LIPC</i>	PAV	15:58541794:G:A (rs6078*) 15:58541843:C:T(rs562988299*) 15:58541944:G:A(rs201563586*) 15:58548387:C:T(rs121912502*) 15:58560880:A:C* 15:58563549:C:T(rs113298164*)	HDL CHOL	0.03 0.0005 0.0005 0.0005 0.05 0.02	0.17 -0.51 0.09 0.22 0.04 0.61	0.21 0.61 0.93 0.82 0.75 0.001	0.002	Benign (BA1, BP4, BP1, BP6) Likely Benign (PM2, BP1, BP4) VUS (PM2, PP3, BP1) VUS (PP3, PM2, PP5, BP1) - Benign (BS1, BS2, BP1, PP3, PP5)
<i>LIPC</i>	PAV	15:58541794:G:A (rs6078*) 15:58541843:C:T(rs562988299*) 15:58541944:G:A(rs201563586*) 15:58548387:C:T(rs121912502*) 15:58560880:A:C* 15:58563549:C:T(rs113298164*)	HDLCE XL	0.03 0.0007 0.0007 0.0007 0.05 0.02	0.19 0.76 1.71 2.07 0.11 0.75	0.20 0.45 0.09 0.04 0.39 7.22E-05	0.0001	Benign (BA1, BP4, BP1, BP6) Likely Benign (PM2, BP1, BP4) VUS (PM2, PP3, BP1) VUS (PP3, PM2, PP5, BP1) - Benign (BS1, BS2, BP1, PP3, PP5)

LIPC	PAV	15:58541794:G:A (rs6078*) 15:58541843:C:T(rs562988299*) 15:58541944:G:A(rs201563586*) 15:58548387:C:T(rs121912502*) 15:58560880:A:C* 15:58563549:C:T(rs113298164*)	HDLC XL	0.03 0.0007 0.0007 0.0007 0.05 0.02	0.16 0.77 1.43 1.78 0.07 0.80	0.30 0.44 0.15 0.07 0.61 2.65E-05	8.12E-05	Benign (BA1, BP4, BP1, BP6) Likely Benign (PM2, BP1, BP4) VUS (PM2, PP3, BP1) VUS (PP3, PM2, PP5, BP1) Benign (BS1, BS2, BP1, PP3, PP5)
LIPC	PAV	15:58541794:G:A (rs6078*) 15:58541843:C:T(rs562988299*) 15:58541944:G:A(rs201563586*) 15:58548387:C:T(rs121912502*) 15:58560880:A:C* 15:58563549:C:T(rs113298164*)	HDLFC XL	0.03 0.0007 0.0007 0.0007 0.05 0.02	0.04 0.47 0.57 0.87 -0.02 0.68	0.79 0.64 0.57 0.38 0.88 0.0003	0.002	Benign (BA1, BP4, BP1, BP6) Likely Benign (PM2, BP1, BP4) VUS (PM2, PP3, BP1) VUS (PP3, PM2, PP5, BP1) - Benign (BS1, BS2, BP1, PP3, PP5)
LIPC	PAV	15:58541794:G:A (rs6078*) 15:58541843:C:T(rs562988299*) 15:58541944:G:A(rs201563586*) 15:58548387:C:T(rs121912502*) 15:58560880:A:C* 15:58563549:C:T(rs113298164*)	HDLTG XL	0.03 0.0007 0.0007 0.0007 0.05 0.02	0.39 1.13 1.15 0.90 0.03 0.52	0.009 0.26 0.25 0.37 0.85 0.006	0.001	Benign (BA1, BP4, BP1, BP6) Likely Benign (PM2, BP1, BP4) VUS (PM2, PP3, BP1) VUS (PP3, PM2, PP5, BP1) - Benign (BS1, BS2, BP1, PP3, PP5)
LIPC	PAV	15:58541794:G:A (rs6078*) 15:58541843:C:T(rs562988299*) 15:58541944:G:A(rs201563586*) 15:58548387:C:T(rs121912502*) 15:58560880:A:C* 15:58563549:C:T(rs113298164*)	HDL XL	0.03 0.0007 0.0007 0.0007 0.05 0.02	0.15 0.65 0.70 1.19 0.01 0.79	0.30 0.52 0.48 0.23 0.92 2.74E-05	0.0001	Benign (BA1, BP4, BP1, BP6) Likely Benign (PM2, BP1, BP4) VUS (PM2, PP3, BP1) VUS (PP3, PM2, PP5, BP1) - Benign (BS1, BS2, BP1, PP3, PP5)
LIPC	PAV	15:58541794:G:A (rs6078*) 15:58541843:C:T(rs562988299*) 15:58541944:G:A(rs201563586*) 15:58548387:C:T(rs121912502*) 15:58560880:A:C* 15:58563549:C:T(rs113298164*)	IDLTG	0.03 0.0007 0.0007 0.0007 0.05 0.02	0.33 1.07 1.59 1.21 0.06 0.63	0.03 0.28 0.11 0.23 0.65 0.0009	0.0004	Benign (BA1, BP4, BP1, BP6) Likely Benign (PM2, BP1, BP4) VUS (PM2, PP3, BP1) VUS (PP3, PM2, PP5, BP1) - Benign (BS1, BS2, BP1, PP3, PP5)
CETP	PAV	16:56975116:T:C* 16:56981179:G:C(rs5880*) 16:56983407:G:A(rs1800777*)	APOA1	0.0006 0.03 0.01	0.05 -0.58 -0.57	0.99 1.33E-05 0.006	5.62E-05	Likely Benign (PM2, BP4, BP1) Benign (BA1, BP6, BP1, BP4) Benign (BA1, BP1, BP4, BP6)
CETP	PAV	16:56975116:T:C* 16:56981179:G:C(rs5880*) 16:56983407:G:A(rs1800777*)	HDL2C	0.0006 0.03 0.01	-0.26 -0.48 -0.34	0.80 0.0003 0.12	0.002	Likely Benign (PM2, BP4, BP1) Benign (BA1, BP6, BP1, BP4) Benign (BA1, BP1, BP4, BP6)
CETP	PAV	16:56975116:T:C* 16:56981179:G:C(rs5880*) 16:56983407:G:A(rs1800777*)	HDL CHOL	0.0005 0.04, 0.01	-0.20 -0.52 -0.45	0.84 8.43E-05 0.03	0.0005	Likely Benign (PM2, BP4, BP1) Benign (BA1, BP6, BP1, BP4) Benign (BA1, BP1, BP4, BP6)
CETP	PAV	16:56975116:T:C* 16:56981179:G:C(rs5880*) 16:56983407:G:A(rs1800777*)	HDLCE M	0.0007 0.03 0.008	0.94 -0.52 -0.78	0.35 0.001 0.008	0.0007	Likely Benign (PM2, BP4, BP1) Benign (BA1, BP6, BP1, BP4) Benign (BA1, BP1, BP4, BP6)
CETP	PAV	16:56975116:T:C* 16:56981179:G:C(rs5880*) 16:56983407:G:A(rs1800777*)	HDLC M	0.0007 0.03 0.008	1.02 -0.57 -0.82	0.31 0.0004 0.005	0.0002	Likely Benign (PM2, BP4, BP1) Benign (BA1, BP6, BP1, BP4) Benign (BA1, BP1, BP4, BP6)
CETP	PAV	16:56975116:T:C* 16:56981179:G:C(rs5880*) 16:56983407:G:A(rs1800777*)	HDLC	0.0007 0.03 0.008	-0.02 -0.61 -1.02	0.99 0.0002 0.0005	3.06E-05	Likely Benign (PM2, BP4, BP1) Benign (BA1, BP6, BP1, BP4) Benign (BA1, BP1, BP4, BP6)
CETP	PAV	16:56975116:T:C* 16:56981179:G:C(rs5880*) 16:56983407:G:A(rs1800777*)	HDLFC M	0.0007 0.03 0.008	0.92 -0.48 -0.72	0.36 0.003 0.01	0.002	Likely Benign (PM2, BP4, BP1) Benign (BA1, BP6, BP1, BP4) Benign (BA1, BP1, BP4, BP6)
CETP	PAV	16:56975116:T:C* 16:56981179:G:C(rs5880*) 16:56983407:G:A(rs1800777*)	HDL M	0.0007 0.03 0.008	1.02 -0.57 -0.82	0.31 0.0004 0.005	0.0002	Likely Benign (PM2, BP4, BP1) Benign (BA1, BP6, BP1, BP4) Benign (BA1, BP1, BP4, BP6)



<i>CETP</i>	PAV	16:56975116:T:C* 16:56981179:G:C(rs5880*) 16:56983407:G:A(rs1800777*)	HDLPL M	0.0007 0.03 0.008	0.15 -0.51 -0.95	0.88 0.002 0.001	0.0003	Likely Benign (PM2, BP4, BP1) Benign (BA1, BP6, BP1, BP4) Benign (BA1, BP1, BP4, BP6)
<i>APOE</i>	PAV	19:44907807:G:A(rs201672011*) 19:44907853:T:C(rs769452*) 19:44908822:C:T (rs7412*)	APOB	0.0006 0.009 0.04	0.11 0.31 -0.49	0.91 0.21 0.0001	0.0003	VUS (PM2, PP2, PP5, BP4) Likely Benign (PP2, BP4, BS2) VUS (PM1, PP2, PP3, BA1, PP5)
<i>APOE</i>	PAV	19:44907853:T:C (rs201672011*) 19:44908822:C:T(rs7412*)	HDL	0.005 0.03	-0.37 1.16	0.60 0.0005	0.0007	Likely Benign (PP2, BS2, BP4) VUS (PM2, PP2, PP3, PP5, BA1)
<i>APOE</i>	PAV	19:44907807:G:A(rs201672011*) 19:44907853:T:C(rs769452*) 19:44908822:C:T (rs7412*)	LDLCE L	0.0007 0.009 0.03	-2.43 0.26 -0.57	0.01 0.35 0.00012	0.0002	VUS (PM2, PP2, PP5, BP4), Likely Benign (PP2, BP4, BS2) VUS (PM1, PP2, PP3, BA1, PP5)
<i>APOE</i>	PAV	19:44907807:G:A(rs201672011*) 19:44907853:T:C(rs769452*) 19:44908822:C:T (rs7412*)	LDLCE M	0.0007 0.009 0.03	-0.61 0.15 -0.53	0.54 0.59 0.0005	0.001	VUS (PM2, PP2, PP5, BP4) Likely Benign (PP2, BP4, BS2) VUS (PM1, PP2, PP3, BA1, PP5)
<i>APOE</i>	PAV	19:44907807:G:A(rs201672011*) 19:44907853:T:C(rs769452*) 19:44908822:C:T (rs7412*)	LDLC L	0.0007 0.009 0.03	-2.44 0.30 -0.58	0.01 0.29 0.0001	0.0002	VUS (PM2, PP2, PP5, BP4) Likely Benign (PP2, BP4, BS2) VUS (PM1, PP2, PP3, BA1, PP5)
<i>APOE</i>	PAV	19:44907807:G:A(rs201672011*) 19:44907853:T:C(rs769452*) 19:44908822:C:T (rs7412*)	LDLC M	0.0007 0.009 0.03	-1.08 0.25 -0.58	0.28 0.38 0.0001	0.0003	VUS (PM2, PP2, PP5, BP4) Likely Benign (PP2, BP4, BS2) VUS (PM1, PP2, PP3, BA1, PP5)
<i>APOE</i>	PAV	19:44907807:G:A(rs201672011*) 19:44907853:T:C(rs769452*) 19:44908822:C:T (rs7412*)	LDLC	0.0007 0.009 0.03	-2.01 0.26 -0.57	0.04 0.35 0.0002	0.0003	VUS (PM2, PP2, PP5, BP4) Likely Benign (PP2, BP4, BS2) VUS (PM1, PP2, PP3, BA1, PP5)

PTV= Protein truncating variant. PAV= Protein altering variant. SINGLEVAR EFFECTS= Effect sizes of single variants. P-value=P-value for SKAT meta-analysis gene test. \*indicates nonsynonymous missense mutation. Classification = Variant classification according to ACMG guidelines (Richards et al. 2015), using automated classification provided by VarSome (Kopanos et al, 2019):

PVS1: Pathogenic, Very Strong.

PS1-3: Pathogenic, Strong

PM1-5: Pathogenic, Moderate.

PP2-5: Pathogenic, Supporting.

BA1: Benign, Stand Alone

BP1-7: Benign, Supporting

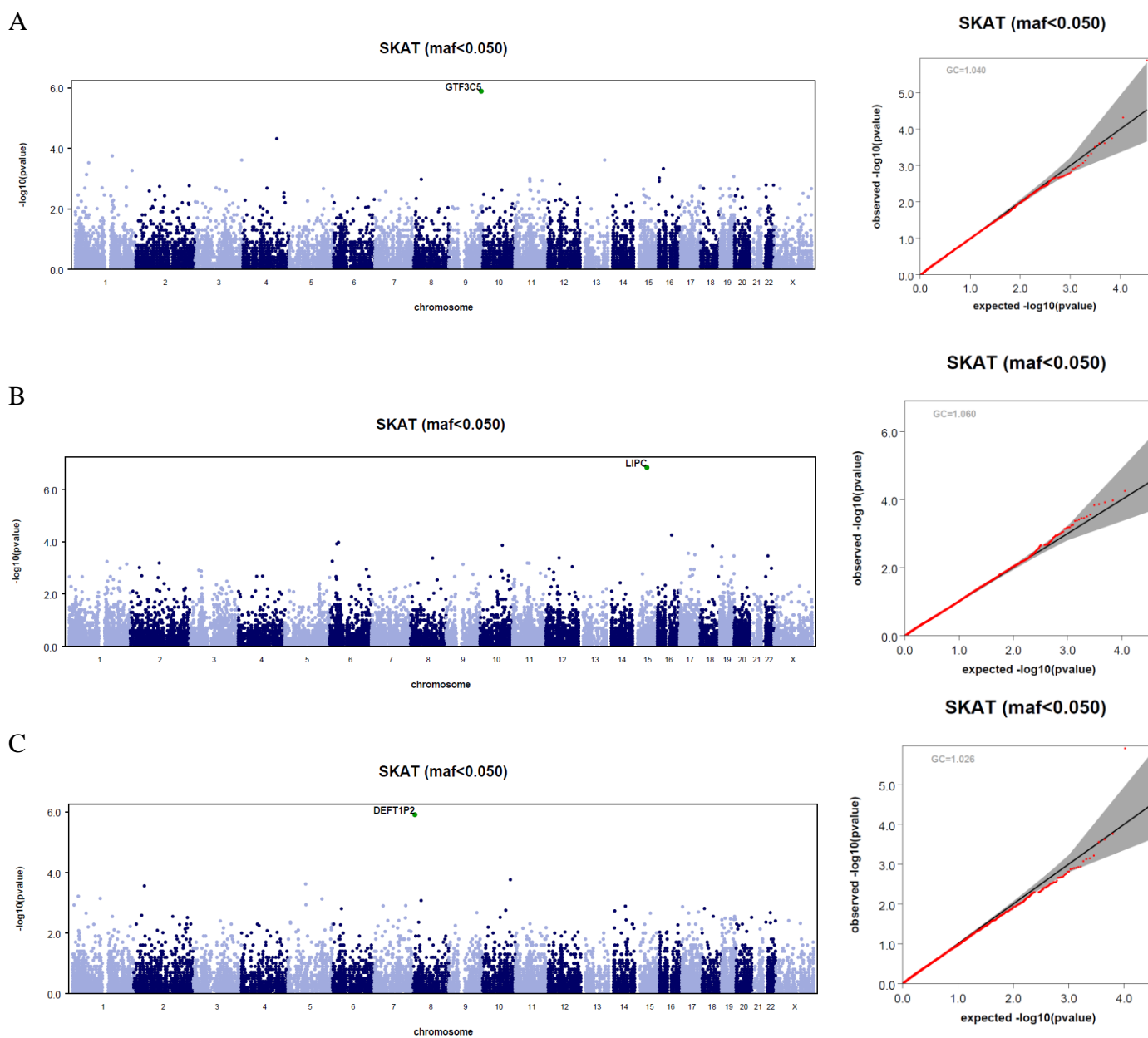
BS1-3: Benign, Strong

The studied genes include genes causing

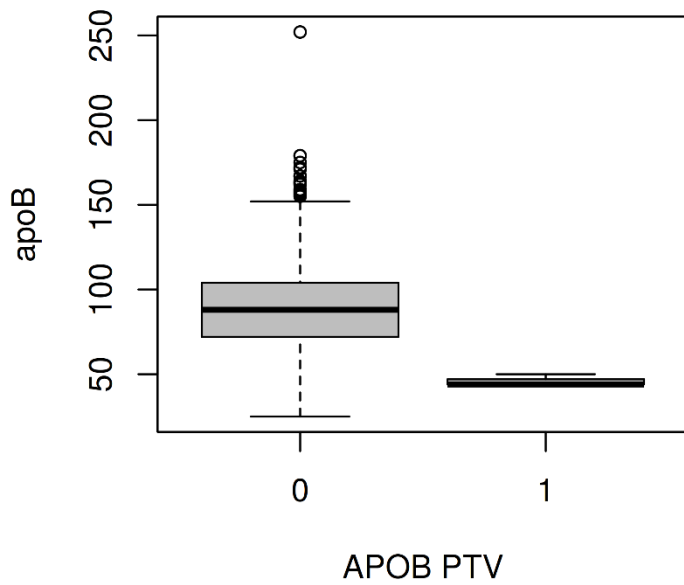
- hypercholesterolemia (*PCSK9* (MIM:607786), *LDLR* (MIM:606945), *APOB* (MIM:107730), *APOE* (MIM:107741), *LPA* (MIM:152200), *LDLRAP1* (MIM:605747), *LIPA* (MIM:613497), and *CYP7A1* (MIM:118455),
- monogenic hypertriglyceridemia (*LPL* (MIM:609708), *APOC2* (MIM:608083), *GPIHBP1* (MIM: 612757), *APOA5* (MIM:606368) and *LMF1* (MIM:611761)),
- genetic disorders of HDL metabolism (*ABCA1* (MIM:600046), *LCAT* (MIM:606967), *APOA1* (MIM:107680), *ANGPTL3* (MIM:604774), *CETP* (MIM:118470), *LIPC* (MIM:151670), and *LIPG* (MIM: 603684))

as described in Musunuru et al., 2015.

**Supplementary Figure S1: WES+WGS SKAT meta-analysis results, Manhattan and QQ-plots. A:** Total cholesterol. B: Apo-A1. C: Phospholipids in extra large VLDL particles.



**Supplementary Figure S2: Apolipoprotein B (apoB) concentration in the three *APOB* rs1407451223 (N=2) or rs1232943044 (N=1) frameshift carriers (group 1; 44 – 50 mg/dl) vs. in the other participants (group 0; median 88 mg/dl, interquartile range 72 – 104 mg/dl).**



## References

- Friedewald WT, Levy RI, Fredrickson DS. Estimation of the concentration of low-density lipoprotein cholesterol in plasma, without use of the preparative ultracentrifuge. *Clin Chem*. 1972 Jun;18(6):499-502. PMID: 4337382.
- Kopanos C, Tsiolkas V, Kouris A, Chapple CE, Albarca Aguilera M, Meyer R, Massouras A: VarSome: The human genomic variant search engine. *Bioinformatics*. 35:1978-1980, 2019
- Musunuru, K. (2015). *Dyslipidemias: Pathophysiology, Evaluation and Management*: A.Garg, Humana Press, Totowa, NJ).
- Richards S, Aziz N, Bale S, Bick D, Das S, Gastier-Foster J, Grody WW, Hegde M, Lyon E, Spector E, Voelkerding K, Rehm HL, on behalf of the ACMG Laboratory Quality Assurance Committee: Standards and guidelines for the interpretation of sequence variants: A joint consensus recommendation of the american college of medical genetics and genomics and the association for molecular pathology. *Genetics in Medicine*. 17:405-423, 2015
- Tolonen N, Forsblom C, Thorn L, Wadén J, Rosengård-Bärlund M, Saraheimo M, Heikkilä O, Pettersson-Fernholm K, Taskinen MR, Groop PH; FinnDiane Study Group. Relationship between lipid profiles and kidney function in patients with type 1 diabetes. *Diabetologia*. 2008 Jan;51(1):12-20. doi: 10.1007/s00125-007-0858-y. Epub 2007 Nov 10. PMID: 17994214.
- Varbo A, Benn M, Nordestgaard BG. Remnant cholesterol as a cause of ischemic heart disease: evidence, definition, measurement, atherogenicity, high risk patients, and present and future treatment. *Pharmacol Ther*. 2014 Mar;141(3):358-67. doi: 10.1016/j.pharmthera.2013.11.008. Epub 2013 Nov 26. PMID: 24287311.

**STrengthening the REporting of Genetic Association studies (STREGA) reporting recommendations, extended from STROBE Statement**

Item	Item no	STROBE Guideline	Extension for Genetic Association Studies (STREGA)	Page no
<b>Title and Abstract</b>	1	(a) Indicate the study's design with a commonly used term in the title or the abstract.		2
		(b) Provide in the abstract an informative and balanced summary of what was done and what was found.		2
<b>Introduction</b>				
<i>Background rationale</i>	2	Explain the scientific background and rationale for the investigation being reported.		4
<i>Objectives</i>	3	State specific objectives, including any pre-specified hypotheses	<b>State if the study is the first report of a genetic association, a replication effort, or both.</b>	4
<b>Methods</b>				
<i>Study design</i>	4	Present key elements of study design early in the paper.		Fig 1
<i>Setting</i>	5	Describe the setting, locations and relevant dates, including periods of recruitment, exposure, follow-up and data collection.		4
<i>Participants</i>	6	(a) <b>Cohort study</b> – Give the eligibility criteria, and the sources and methods of selection of participants. Describe methods of follow-up.  <b>Case-control study</b> – Give the eligibility criteria, and the sources and methods of case ascertainment and control selection. Give the rationale for the choice of cases and controls.  <b>Cross-sectional study</b> – Give the eligibility criteria, and the sources and methods of selection of participants.	<b>Give information on the criteria and methods for selection of subsets of participants from a larger study, when relevant.</b>	5
		(b) <b>Cohort study</b> – For matched studies, give matching criteria and number of exposed and unexposed.  <b>Case-control study</b> – For matched studies, give matching criteria and the number of controls per case.		
<i>Variables</i>	7	(a) Clearly define all outcomes, exposures, predictors, potential confounders, and effect modifiers. Give diagnostic criteria, if applicable.	<b>(b) Clearly define genetic exposures (genetic variants) using a widely –used nomenclature system. Identify variables likely to be associated with population stratification (confounding by ethnic origin).</b>	(a)5, Table S1 (b) 6,7

<i>Data sources measurement</i>	8*	(a) For each variable of interest, give sources of data and details of methods of assessment (measurement). Describe comparability of assessment methods if there is more than one group.	<b>(b) Describe laboratory methods, including source and storage of DNA, genotyping methods and platforms (including the allele calling algorithm used, and its version), error rates and call rates. State the laboratory /centre where genotyping was done. Describe comparability of laboratory methods if there is more than one group. Specify whether genotypes were assigned using all of the data from the study simultaneously or in smaller batches.</b>	5 6
<i>Bias</i>	9	(a) Describe any efforts to address potential sources of bias.	<b>(b) For quantitative outcome variables, specify if any investigation of potential bias resulting from pharmacotherapy was undertaken. If relevant, describe the nature and magnitude of the potential bias, and explain what approach was used to deal with this.</b>	5
<i>Study size</i>	10	Explain how the study size was arrived at.		7
<i>Quantitative variables</i>	11	Explain how quantitative variables were handled in the analyses. If applicable, describe which groupings were chosen, and why.	<b>If applicable, describe how effects of treatment were dealt with.</b>	7
<i>Statistical methods</i>	12	(a) Describe all statistical methods, including those used to control for confounding.	<b>State software version used and options (or settings) chosen.</b>	7,8
		(b) Describe any methods used to examine subgroups and interactions.		Table S1, 8
		(c) Explain how missing data were addressed.		
		(d) <b>Cohort study</b> – If applicable, explain how loss to follow-up was addressed.  <b>Case-control study</b> – If applicable, explain how matching of cases and controls was addressed.		
		(e) Describe any sensitivity analyses.		
		(e) Describe any sensitivity analyses.		

			<b>(f) State whether Hardy-Weinberg equilibrium was considered and, if so, how.</b>	7, 8
			<b>(g) Describe any methods used for inferring genotypes or haplotypes.</b>	7
			<b>(h) Describe any methods used to assess or address population stratification.</b>	7
			<b>(i) Describe any methods used to address multiple comparisons or to control risk of false positive findings.</b>	7,8
			<b>(j) Describe any methods used to address and correct for relatedness among subjects.</b>	6
<b>Results</b>				
<i>Participants</i>	13*	(a) Report the numbers of individuals at each stage of the study – e.g. numbers potentially eligible, examined for eligibility, confirmed eligible, included in the study, completing follow-up and analysed.	<b>Report numbers of individuals in whom genotyping was attempted and numbers of individuals in whom genotyping was successful.</b>	6-7
		(b) Give reasons for non-participation at each stage.		
		(c) Consider use of a flow diagram.		
<i>Descriptive data</i>	14*	(a) Give characteristics of study participants (e.g. demographic, clinical, social) and information on exposures and potential confounders.	<b>Consider giving information by genotype.</b>	10
		(b) Indicate the number of participants with missing data for each variable of interest.		
		(c) <b>Cohort study</b> – Summarize follow-up time, e.g. average and total amount.		
<i>Outcome data</i>	15*	<b>Cohort study</b> – Report numbers of outcome events or summary measures over time.	<b>Report outcomes (phenotypes) for each genotype category over time</b>	Fig 2
		<b>Case-control study</b> – Report numbers in each exposure category, or summary measures of exposure.	<b>Report numbers in each genotype category</b>	
		<b>Cross-sectional study</b> – Report numbers of outcome events or summary measures.	<b>Report outcomes (phenotypes) for each genotype category</b>	
<i>Main results</i>	16	(a) Give unadjusted estimates and, if applicable, confounder-adjusted estimates and their precision (e.g. 95% confidence intervals). Make clear which confounders were adjusted for and why they were included.		7
		(b) Report category boundaries when continuous variables were categorized.		

		(c) If relevant, consider translating estimates of relative risk into absolute risk for a meaningful time period.	
			<b>(d) Report results of any adjustments for multiple comparisons.</b>
<i>Other analyses</i>	17	(a) Report other analyses done – e.g. analyses of subgroups and interactions, and sensitivity analyses.	Bonferroni thresholds given 10 Fig 2 B,C,E,F
			<b>(b) If numerous genetic exposures (genetic variants) were examined, summarize results from all analyses undertaken.</b>
			Fig 3, tables 1-3
			<b>(c) If detailed results are available elsewhere, state how they can be accessed.</b>
<b>Discussion</b>			
<i>Key results</i>	18	Summarize key results with reference to study objectives.	14
<i>Limitations</i>	19	Discuss limitations of the study, taking into account sources of potential bias or imprecision. Discuss both direction and magnitude of any potential bias.	17-18
<i>Interpretation</i>	20	Give a cautious overall interpretation of results considering objectives, limitations, multiplicity of analyses, results from similar studies, and other relevant evidence.	18
<i>Generalizability</i>	21	Discuss the generalizability (external validity) of the study results.	17-18
<b>Other information</b>			
<i>Funding</i>	22	Give the source of funding and the role of the funders for the present study and, if applicable, for the original study on which the present article is based.	19

STROBE: Strengthening the Reporting of Observational Studies in Epidemiology

\*Give information separately for cases and controls in case-control studies and, if applicable, for exposed and unexposed groups in cohort and cross-sectional studies.