

1 **Detection and quantification of enteric pathogens in aerosols near open wastewater canals in cities**  
2 **with poor sanitation**

3

4 Olivia Ginn<sup>1</sup>, Lucas Rocha-Melogno<sup>2</sup>, Aaron Bivins<sup>3</sup>, Sarah Lowry<sup>1</sup>, Maria Cardelino<sup>1</sup>, Dennis Nichols<sup>4</sup>,  
5 Sachchida Nand Tripathi<sup>5</sup>, Freddy Soria<sup>6</sup>, Marcos Andrade<sup>7,8</sup>, Mike Bergin<sup>2</sup>, Marc A. Deshusses<sup>2</sup>, Joe  
6 Brown<sup>9\*</sup>

7

8 <sup>1</sup>School of Civil and Environmental Engineering, Georgia Institute of Technology, Atlanta, GA,  
9 30332, United States

10 <sup>2</sup>Department of Civil and Environmental Engineering, and Duke Global Health Institute, Duke  
11 University, Durham, NC, 27708, United States

12 <sup>3</sup>Department of Civil and Environmental Engineering and Earth Science, University of Notre Dame,  
13 Notre Dame, Indiana, 46656, United States

14 <sup>4</sup>Rollins School of Public Health, Emory University, Atlanta, GA, 30322, United States

15 <sup>5</sup>Department of Civil Engineering & Centre for Environmental Science and Engineering, Indian Institute  
16 of Technology – Kalyanpur, Kanpur, Uttar Pradesh, 208016, India

17 <sup>6</sup>Centro de Investigación en Agua, Energía y Sostenibilidad, Universidad Católica Boliviana “San Pablo”,  
18 La Paz, Bolivia.

19 <sup>7</sup>Laboratory for Atmospheric Physics, Institute for Physics Research, Universidad Mayor de San Andres,  
20 La Paz, Bolivia.

21 <sup>8</sup>Department of Atmospheric and Oceanic Sciences, University of Maryland, College Park, MD, USA

22 <sup>9</sup>Department of Environmental Sciences and Engineering, Gillings School of Global Public Health,  
23 University of North Carolina, Chapel Hill, North Carolina, 27599, United States

24 \*Corresponding author: Department of Environmental Sciences and Engineering, University of North  
25 Carolina, 135 Dauer Drive, Chapel Hill, NC, 27599, USA. Tel: 404 385 4579. Email: joebrown@unc.edu

26

27 **KEYWORDS**

28 Bioaerosols, enteric pathogens, urban sanitation, ddPCR, environmental health

29

30 **SYNOPSIS**

31 We detected and quantified molecular targets associated with important enteric pathogens in outdoor  
32 aerosols in cities with poor sanitation to assess the potential role of the aeromicrobiological pathway in  
33 enteric infection transmission in such settings.

34

35 **ABSTRACT**

36 Urban sanitation infrastructure is inadequate in many low-income countries, leading to the presence of  
37 highly concentrated, uncontained fecal waste streams in densely populated areas. Combined with  
38 mechanisms of aerosolization, airborne transport of enteric microbes and their genetic material is possible  
39 in such settings but remains poorly characterized. We detected and quantified enteric pathogen-associated  
40 gene targets in aerosol samples near open wastewater canals (OWCs) or wastewater-impacted surface  
41 waters and control sites in La Paz, Bolivia; Kanpur, India; and Atlanta, USA via multiplex reverse-  
42 transcription qPCR (37 targets) and ddPCR (13 targets). We detected a wide range of enteric targets,  
43 some not previously reported in extramural urban aerosols, with more frequent detections of all enteric  
44 targets at higher densities in La Paz and Kanpur near OWCs. We report density estimates ranging up  
45 to  $4.7 \times 10^2$  gc per  $m^3_{\text{air}}$  across all targets including heat stable enterotoxigenic *E. coli*, *C. jejuni*,  
46 enteroinvasive *E. coli/Shigella* spp., *Salmonella* spp., norovirus, and *Cryptosporidium* spp. An estimated  
47 25%, 76%, and 0% of samples containing positive pathogen detects were accompanied by culturable *E.*  
48 *coli* in La Paz, Kanpur, and Atlanta, respectively, suggesting potential for viability of enteric microbes at  
49 the point of sampling. Airborne transmission of enteric pathogens merits further investigation in cities  
50 with poor sanitation.

51

52

53 **ABBREVIATIONS**

54 Low-and middle-income country (LMIC). open wastewater canal (OWC). Bovine respiratory syncytial  
55 virus (BRSV). Bovine herpes virus (BoHV). Taqman Array Card (TAC). Droplet digital PCR (ddPCR).  
56 Enteroinvasive *E. coli* (EIEC). Heat stable enterotoxigenic *E. coli* (ST-ETEC). Enteroaggregative *E. coli*  
57 (EAEC). Heat labile (LT). Limit of detection (LOD).

58

59 **INTRODUCTION**

60 With few exceptions, large cities in low- and middle-income countries (LMICs) have inadequate  
61 sanitation infrastructure<sup>1-3</sup>. Unsafe water and sanitation enable the transmission of enteric pathogens from  
62 infected individuals to susceptible hosts via direct contact or through the environment in multiple  
63 interconnected pathways<sup>4,5</sup>. While a rich and rapidly growing body of literature describes microbial risks  
64 associated with direct or indirect exposure to fecal contamination in a wide variety of settings, relatively  
65 few studies have examined the potential for transmission of enteric pathogens via the aeromicrobiological  
66 pathway in cities in LMICs. In these settings, the transport of enteric pathogens in aerosols may be  
67 possible due to a confluence of factors: inadequate sanitation infrastructure resulting in concentrated  
68 flows of fecal wastes, a high disease burden resulting in high-risk waste containing human enteric  
69 pathogens, high population density, and environmental conditions that may be conducive to the  
70 aerosolization of concentrated fecal wastes. The aerosolization, transport, and deposition of microbial  
71 pathogens in cities lacking good sanitation could lead to exposure either through inhalation or through  
72 ingestion via other pathways (e.g., food, water, direct contact)<sup>6</sup>.

73

74 Aerosolization of biological material is known to be possible via several mechanisms including bubble  
75 bursting<sup>7-9</sup>, evaporation, raindrop impaction<sup>10,11</sup>, and others<sup>12-15</sup>. The creation and persistence of  
76 bioaerosols can be associated with a range of variables related to environmental conditions and the built  
77 environment including rain events<sup>16-19</sup>, meteorological conditions<sup>20-22</sup>, urban surface waters and water

78 features<sup>6,23,24</sup>, wastewater treatment unit processes that include mechanical mechanisms<sup>25,26</sup>, and other  
79 infrastructure. The mechanisms behind aerosolization and transport of microorganisms from liquid  
80 surfaces and the microbial effects on droplet lifetime have been well-characterized under controlled  
81 conditions<sup>7,8</sup>. Laboratory studies have revealed that bubbles in contaminated water surfaces may  
82 experience conditions manipulated by microorganisms, allowing for smaller, more numerous, and higher  
83 velocity droplets to transition from water to air<sup>9</sup>. It has been shown that pathogens can be released via  
84 raindrop impactation, allowing for aerosol transport<sup>10,11</sup>. Despite an increasingly nuanced understanding of  
85 the physics of microbial transmission via aerosols, less is known about viability and persistence of  
86 infectious pathogens in this medium.

87

88 Among important human pathogens transmitted in aerosols, respiratory viruses including SARS-CoV-2  
89 and influenza are the best characterized, primarily in indoor settings, given the central role of inhalation in  
90 exposures<sup>27-31</sup>. In the case of sanitation-related pathogens – where primary exposure is generally ingestion  
91 rather than inhalation – studies in high-risk, extramural (outdoor) settings in the USA and in other high-  
92 income countries have revealed that bioaerosols containing enteric microbes are common near point  
93 sources of concentrated fecal waste. Studies have primarily focused on ambient air surrounding  
94 wastewater treatment plants<sup>32-43</sup> and in the context of land application of biosolids<sup>44-54</sup>; several studies  
95 have examined bioaerosols surrounding composting facilities<sup>55,56</sup>, meat markets<sup>57</sup>, impacted urban sites<sup>58-</sup>  
96 <sup>63</sup>, and concentrated animal feeding operations<sup>64-66</sup>.

97

98 Of the studies examining bioaerosols at extramural urban sites, a majority have included a limited range  
99 of enteric microbes, generally reporting fecal indicator bacteria including members of the coliform group  
100 if using culture methods<sup>60,67,68</sup>, or reporting wastewater-associated or fecal genera typically from 16S  
101 sequencing data<sup>69-73</sup> with rare population classification to the species or strain level. Targeted  
102 measurement of specific enteric pathogens is rare, partly because the presence of important enteric  
103 pathogens is unexpected outside settings where these infections are common, and few studies have been

104 conducted where the burden of sanitation-related infections is high. While sequencing provides key  
105 information about airborne microbial communities by revealing relative abundance, quantitative  
106 estimates for specific pathogens are needed in exposure assessment and transport modeling<sup>74</sup> and to  
107 further assess the potential public health relevance of this poorly understood pathway of transmission.  
108 Among previously reported studies of ambient urban aerosols, few have been located in LMICs despite  
109 the fact that cities in these countries are generally characterized by inadequate sanitation infrastructure  
110 and high population density. These conditions lead to widespread fecal contamination in close proximity  
111 to people, contributing to a high burden of disease. Diarrheal diseases caused an estimated 1.8 million  
112 deaths worldwide in 2017<sup>75</sup>, with LMICs bearing a disproportionate burden of morbidity and mortality.  
113  
114 Based on previous literature on the presence of enteric microbes in aerosols from well-studied settings in  
115 wealthy countries, we hypothesized that aerosolized enteric pathogens could be present and quantifiable  
116 where urban sanitation is lacking. We assessed this hypothesis in two cities with poor sanitation and in  
117 one city with established and maintained wastewater infrastructure as a reference site.

## 118 119 **METHODS**

120 **Sampling locations.** We conducted sampling in Kanpur, India (May – July 2017); La Paz, Bolivia  
121 (March 2018, June 2018, March 2019, June and July 2019); and Atlanta, Georgia, USA (March 2018-  
122 January 2019). Kanpur has distinct dry (October to June) and rainy (July to September) seasons; we  
123 sampled from May to August to capture both periods. Similarly, we intentionally sampled in La Paz  
124 during both rainy (December to March) and dry (May to August) seasons.

125  
126 Kanpur is densely populated (Nagar district: 4.6 million people, population density of 1500  
127 persons/km<sup>2</sup>)<sup>76</sup> with a majority of untreated industrial, agricultural, and sewage waste conveyed via a  
128 system of uncovered canals (open wastewater canals, OWCs) discharging to the Ganges River<sup>77,78</sup>. In La  
129 Paz, a network of rivers receive untreated sewage discharge, industry effluent, and stormwater runoff;

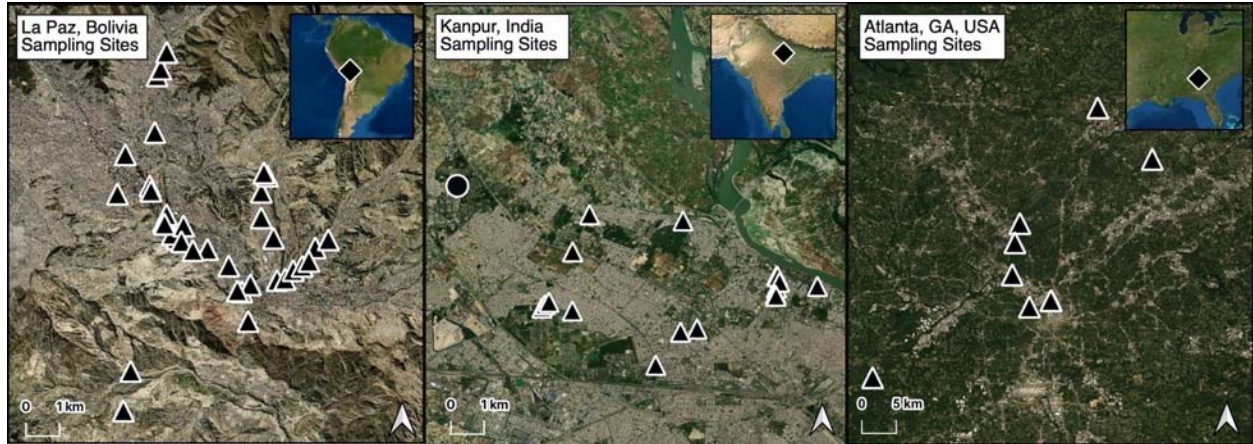
130 most of the waterway flows in a series of engineered channels<sup>79,80</sup>, also characterized as OWCs. The  
131 largest of these is the highly impacted Choqueyapu River, flowing through central La Paz (population:  
132 900,000, 900 persons/km<sup>2</sup>)<sup>81,82</sup> where it is joined by tangential tributaries including the Orkojahuirra,  
133 Irpavi, and Achumani rivers. In past studies, this river system and its basin – eventually flowing into the  
134 Amazon – has been shown to contain a diverse and rich array of enteric microbes indicating high levels of  
135 fecal contamination<sup>79,82,83</sup>. As a reference site, Atlanta is characterized by having an established and  
136 maintained subsurface wastewater infrastructure, although urban surface waters in Atlanta’s watershed  
137 experience elevated levels of fecal-associated pathogens<sup>84–86</sup> due to nonpoint source pollution and  
138 combined sewer overflows<sup>87,88</sup>. The city of Atlanta’s population density is an estimated 1500 persons/km<sup>2</sup>  
139 <sup>89</sup>, though sampling locations near impacted streams were in suburban locations at lower than mean  
140 population density.

141

142 We identified 18 sites in Kanpur, 37 sites in La Paz, and 8 sites in Atlanta meeting the following criteria:  
143 (1) proximity to sources of bioaerosols (<1 km) containing enteric microbes, OWCs in the cases of India  
144 and Bolivia and impacted surface waters in Atlanta; (2) public and ground level accessibility; and (3)  
145 unintrusive to members of the community during multi-hour sampling events. In Kanpur, we selected a  
146 control site greater than 1 km away from known OWCs and located on the Indian Institute of Technology  
147 IIT-Kanpur’s campus. The campus is a controlled private area with limited access to non-students and  
148 non-faculty, is less densely populated, has underground piped sewerage, and has a much lower animal  
149 presence. In La Paz, we identified two control sites >1 km from known concentrated wastewaters or other  
150 contaminated sources: (1) Chacaltaya, a weather station and environmental observatory located at 5380 m  
151 in elevation and far from human habitation and (2) Pampalarama, an unimpacted site near the  
152 Choqueyapu headwaters in a protected natural area. In Atlanta, we sampled at eight sites adjacent to  
153 impacted streams and rivers in Atlanta’s watershed: the Chattahoochee River, Proctor Creek, Foe Killer  
154 Creek, and South Fork Peachtree Creek. Additionally, we sampled on the roof of our laboratory and at

155 ground level on Georgia Tech's campus (located in Midtown Atlanta), both >1 km from surface waters as  
156 controls.

157



158

159 **Figure 1.** Aerosol sampling sites in La Paz, Bolivia; Kanpur, India; and Atlanta, USA. Sites located <1  
160 km from open waste canals (OWCs) are represented by triangles and sites located >1 km from OWCs are  
161 represented by circles. Control sites (>1 km from OWCs) outside the city of La Paz not shown within this  
162 map extent but are located outside of the city of La Paz in remote areas.

163

164 **Bioaerosol sampling, extraction and analysis.** We used a combination of high-volume filtration and  
165 aerosol impaction in sampling across sites. We used the ACD-200 BobCat Dry Filter Continuous Air  
166 Sampler (InnovaPrep, Drexel, MO, USA) with sterile and single-use 52 mm electret filters and a flow rate  
167 of 200 L/min for downstream molecular analysis post extraction. We applied a sterile single-use wet foam  
168 carbon compressed elution kit (InnovaPrep, Drexel, MO, USA) to flush the filter following the  
169 manufacturer's instructions, yielding approximately 6 mL of liquid eluate<sup>90</sup>. The pre-sterile single use  
170 filter and elution kit is intended to prevent cross-contamination between sequential samples; all filter  
171 handling and elution was conducted aseptically via manufacturer instructions and the high volume filter  
172 was wiped down with 10% bleach and 70% ethanol before and after sampling. As a control assessment  
173 for any residual background signal in the elution buffer and filters, we applied the eluate to the filters in  
174 the laboratory, extracted the blank eluate, and used this as a template for limit of detection calculations as  
175 well as sample blank controls in molecular analyses.

176

177 We treated the eluate with guanidine thiocyanate-based universal extraction (UNEX; Microbiologics, St.  
178 Cloud, MN, USA) lysis buffer in a 1:1 ratio, storing the mix in cryovials for sample transport to the  
179 laboratory. Samples were stored in a -80°C freezer immediately after transport to the laboratory, avoiding  
180 freeze-thaw by distributing the sample and buffer mixture into multiple aliquots. As a process control  
181 prior to extraction, we spiked the mix with 5uL of Inforce 3 Bovine Vaccine (Zoetis, Parsippany, NJ)  
182 containing bovine respiratory syncytial virus (BRSV) and bovine herpes virus (BoHV). Briefly, we  
183 conducted manual DNA and RNA extraction with the following steps: 1) added 300 uL of the mixture  
184 and 300 uL of 70% ethanol to a HiBind mini column (Omega BioTek, Norcross, GA), 2) following  
185 manufacturer advice to increase DNA yield, repeated step (1) three times, using a total of 450 uL of  
186 sample eluate, 3) washed the filter column with 100% ethanol, 4) and finally, eluted the nucleic acids and  
187 stored them in 50-75 µL of 10 mM Tris-1 mM EDTA (pH 8) at -80°C until further analysis<sup>91</sup>. Previous  
188 experiments have demonstrated an optimized recovery efficiency for *Cryptosporidium parvum* of around  
189 50%<sup>92</sup> and comparable crossing threshold (CT) values to other commercially available kits when assessed  
190 using real-time PCR<sup>91</sup>. In total, we collected 75 high-volume air samples from La Paz (71 collected near  
191 OWCs and 4 collected from control sites >1 km from OWCs), 53 high-volume air samples from Kanpur  
192 (45 collected near OWCs and 8 collected from one control site >1 km from OWCs), and 15 high-volume  
193 air samples in Atlanta (10 collected near impacted surface waters and 5 total (4 roof and 1 ground level)  
194 collected at the control site >1 km from impacted sites). We detail the time of day of sampling grouped by  
195 morning samples (AM, within the time period of 7am-12pm) and afternoon samples (PM, within the time  
196 period of 12pm-7pm) in addition to relevant information as described in the EMMI MIQE guidelines in  
197 Supporting Information<sup>93,94</sup>. The average volume sampled with the high-volume sampler was 47.5 m<sup>3</sup> in  
198 La Paz (95% confidence interval = 42.3, 52.8), 36.3 m<sup>3</sup> in Kanpur (95% confidence interval = 35.8, 36.7),  
199 and 28.3 in Atlanta (95% confidence interval = 30.4, 26.2).

200



201 For all high-volume air samples in Kanpur (n=53), we applied 1 mL of BobCat eluate to Compact Dry-  
202 EC (CD-EC) plates (Hardy Diagnostics, Santa Maria, CA, USA)<sup>95</sup> for culture of total coliform and *E.*  
203 *coli*. Concurrent with high-volume air sampling in La Paz (n=31) and in Atlanta (n=15), we  
204 simultaneously used the Six-Stage Viable Andersen Cascade Impactor (ACI) with plates in six partitioned  
205 chambers at a flow rate of approximately 28.5 L/min for 1 hour to collect size-resolved bioaerosols in the  
206 size range of 0.65 to >7  $\mu\text{m}$  (ACI, Thermo Scientific<sup>TM</sup>, USA)<sup>96</sup>. We used AquaTest medium (Sisco  
207 Research Laboratories PVT. LTD., India) in the ACI to detect *E. coli*<sup>97-99</sup>. All culture samples were  
208 incubated at 37 °C and counted per the manufacturer's instructions after 18-24 hours for colony forming  
209 units (CFUs). Due to poor potential recovery of culturable *E. coli* in high-volume samples from Kanpur,  
210 we subsequently used the more sensitive ACI in later sampling in La Paz and Atlanta. The average  
211 volume sampled in La Paz and Atlanta with the ACI was 1.30 m<sup>3</sup> (95% confidence interval = 1.23, 1.37)  
212 and 0.970 m<sup>3</sup> (95% confidence interval = 0.930, 1.01) respectively.

213

214 **Meteorological data.** In La Paz, we collected solar UV irradiance (UVB, 280–320 nm), temperature  
215 (°C), and relative humidity (%) data from a stationary radiometer (Yankee Environmental Systems,  
216 Turners Falls, MA, USA) located approximately 2-5 km from sampling sites depending on location. In  
217 Kanpur, we collected on site data for each sample. We collected temperature (°C), and relative humidity  
218 (%) using the Vaisala HUMICAP Humidity and Temperature Transmitter Series HMT330 (Helsinki,  
219 Finland) and windspeed and direction with an anemometer (Ambient Weather, Arizona, USA). We  
220 conducted linear regression analyses to determine meteorological effects on enteric pathogens in aerosols.  
221 All analysis were conducted in R version 4.0.2<sup>100</sup>. We assessed the samples on a daily level as well as  
222 disaggregated the data by whether samples were taken in the morning (8am-12pm) or in the afternoon (12  
223 pm and later).

224

225

226 **Enteric pathogen screening: multiplex qPCR.** As a first step in screening enteric targets, we analyzed a  
227 subset of 40 high-volume samples from Kanpur and 23 high-volume samples from La Paz all <1 km from  
228 OWCs and 13 high-volume samples from Atlanta (7 of which were < 1 km from impacted surface waters)  
229 using a custom multiplex qPCR-based TaqMan Array Card (TAC) assembled and optimized by Thermo  
230 Fisher Scientific (Waltham, MA, USA). The subset was based upon the timing of the analysis performed  
231 and a limited stock of reagents. Select targets included globally important sanitation-related viruses (pan-  
232 adenovirus, pan-astrovirus, pan-enterovirus, norovirus GI/II, rotavirus A-C, and sapovirus I/II/IV/V),  
233 bacteria (*Aeromonas* spp., *Campylobacter coli*, *Clostridium difficile*, 9 *Escherichia coli* virulence genes  
234 (Table S1), *Enterococcus faecalis*, *Enterococcus faecium*, *Mycobacterium tuberculosis*, *Salmonella* spp.,  
235 *Vibrio cholerae*, *Yersinia* spp.), protozoa (*Cryptosporidium parvum*, *Entamoeba histolytica*, *Giardia*  
236 *duodenalis*), and helminths (*Trichuris trichiura*, *Ascaris lumbricoides*) as well as multiple internal  
237 controls Though many of the targets are pathogenic, the card also includes some that may be commensal  
238 or of uncertain health relevance<sup>101</sup>, particularly in settings where asymptomatic carriage of common  
239 enteric pathogens is common<sup>102</sup>. We detail methods, descriptive statistics, targets, specific classifications  
240 of strains and types included in these assays, and their pathogenic relevance in the SI and Table S1, also  
241 previously described by Capone et al<sup>103</sup> and in accordance with the MIQE guidelines<sup>104</sup>.

242  
243 **Quantitative molecular assays: ddPCR.** For density estimation, we conducted absolute quantification of  
244 12 enteric pathogen targets in high-volume aerosol samples via Droplet Digital PCR (ddPCR; QX200  
245 Droplet Digital PCR System, Bio-Rad, Hercules, CA, USA). Targets included nucleic acids associated  
246 with selected viruses (adenovirus A-F, pan-enterovirus, norovirus GI, and norovirus GII), bacteria  
247 (*Campylobacter jejuni*, enteroinvasive *E. coli* (EIEC)/*Shigella*/spp., heat stable enterotoxigenic *E. coli*  
248 (ST-EPEC), and two targets for *Salmonella* spp.), and protozoa (*Cryptosporidium* spp. and *Giardia*  
249 *duodenalis assemblage B*) and are detailed in Table S2. Targets represent a subset from TAC chosen  
250 based on public health relevance in the context of the global enteric disease burden<sup>102</sup>. Although by  
251 necessity a sub-set of globally important diarrheagenic pathogens, it includes those responsible for the

252 highest burdens of morbidity and mortality resulting from acute diarrhea<sup>105</sup> and that have been implicated  
253 in large-scale studies of diarrheal etiology<sup>102,106-109</sup>. We experimentally determined LODs for each assay  
254 using a probit analysis outlined by Stokdyk et. al<sup>110</sup>. A complete and detailed description of methods,  
255 pathogen targets, assay conditions, and all digital MIQE<sup>111</sup> requirements are included in the SI. All data  
256 and metadata are accessible in a publicly accessible data repository (<https://osf.io/NP5M9/>)<sup>93</sup>

257

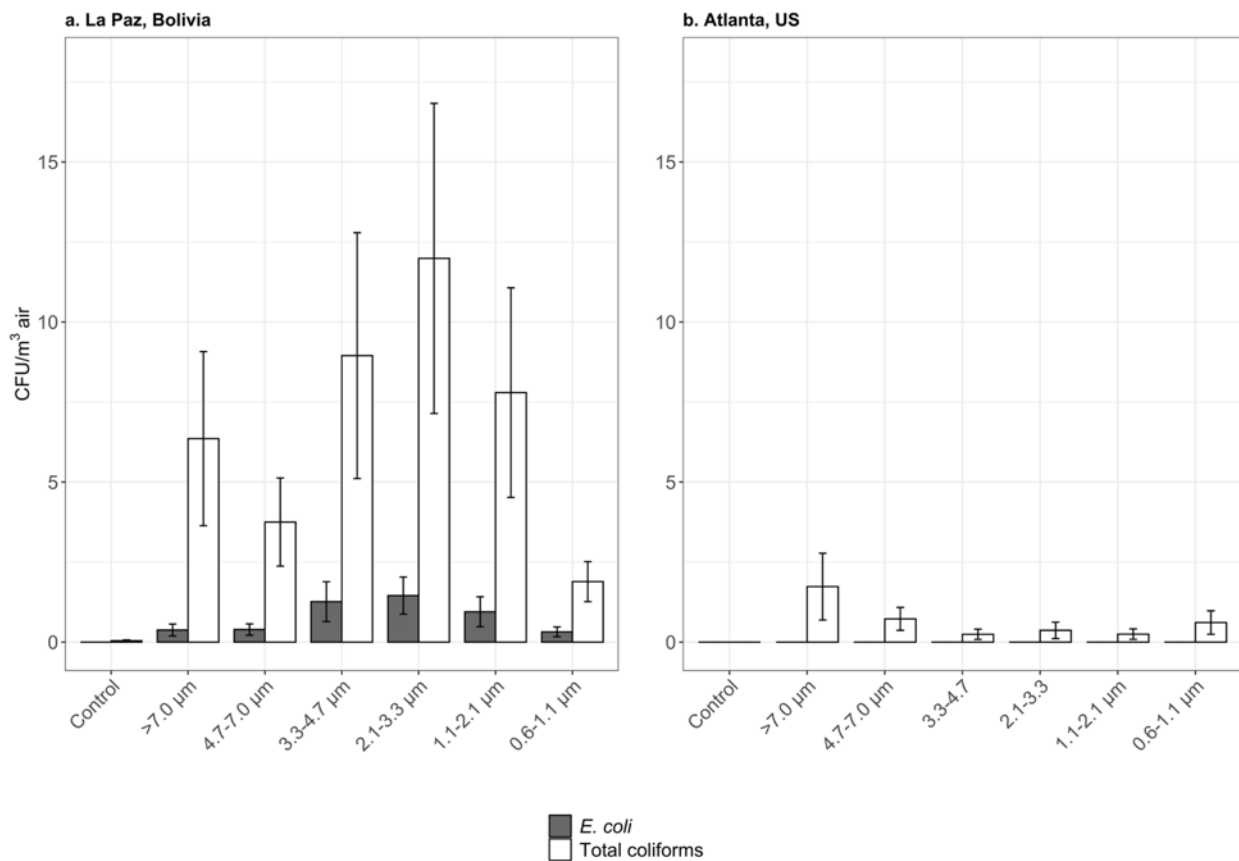
258 In addition to stratifying by sampling city and season (for La Paz and Kanpur), we further disaggregated  
259 data by distance from nearby putative sources. We collected GPS coordinates for each sample site and  
260 estimated the linear distance from the nearest OWC or impacted surface water. We use *a priori*-defined  
261 categories of 0-10 m and more than 10 m from OWCs (or impacted surface waters in Atlanta) and  
262 assessed the number of unique target detections per total assays we ran on each sample at each distance  
263 category. We used a Wilcoxon rank sum test to evaluate whether molecular detections decreased as a  
264 function of increasing distance from OWCs, time of day, and season. We used multiple linear regression  
265 to assess the effects of meteorological variables on target densities. All analyses were completed in R  
266 version 4.0.2<sup>100</sup> and significance was based on 95% confidence ( $\alpha=0.05$ ).

267

## 268 **RESULTS**

269 **Culturable fecal indicator bacteria (FIB) in aerosols.** Because we could not measure pathogen viability  
270 directly across all targets at the point of sampling, we used culturable FIB as a proxy measure to indicate  
271 potential for viability of enteric microbes. Of the 45 air samples we collected in Kanpur near OWCs (<1  
272 km) and analyzed by culture, 61% had detectable *E. coli* with an average concentration and 95% CI of  $1.5$   
273  $\pm 1.3$  CFU/m<sup>3</sup><sub>air</sub> across positive detections. Across all 45 samples including non-detects, the average  
274 concentration of *E. coli* was  $0.92 \pm 0.41$  CFU/m<sup>3</sup><sub>air</sub>. All control samples (n=7) taken >1 km away from  
275 observed fecal contamination were negative for culturable *E. coli*. In La Paz, adjacent to the Choqueyapu  
276 River and its adjoining tributaries, of the 28 air samples in close proximity to uncontained waste (<1 km)

277 and analyzed for viable coliform, 52% were positive for *E. coli* with an average concentration and 95%  
 278 CI of  $11 \pm 3.8$  CFU/m<sup>3</sup><sub>air</sub>. Across all 28 samples including non-detects, the average concentration of *E.*  
 279 *coli* was  $5.3 \pm 2.1$  CFU/m<sup>3</sup><sub>air</sub>. We did not detect any *E. coli* in the samples taken >1 km away from  
 280 uncontained waste (n=4). The size distribution capabilities of the ACI revealed that 27% of culturable *E.*  
 281 *coli* were under 2.1 μm, the size cutoff for fine aerosol particles<sup>112</sup>. No samples in Atlanta were positive  
 282 for *E. coli* though we detected total coliform (Figure 2).



283  
 284 **Figure 2.** Size distribution of culturable *E. coli* and total coliform in La Paz and Atlanta. The mean  
 285 standard error bars show 95% confidence intervals for densities in each size range. We did not collect  
 286 Andersen Cascade Impactor (ACI) samples in Kanpur, so size-resolved *E. coli* detections by culture are  
 287 not available for that site.

288  
 289 **Screening of enteric microbes in aerosols.** We analyzed a subset of 40 high-volume samples from  
 290 Kanpur, 23 high-volume samples from La Paz, and 13 high-volume samples from Atlanta for the  
 291 presence and absence of 42 molecular targets including those specific to an *a priori*-defined list of

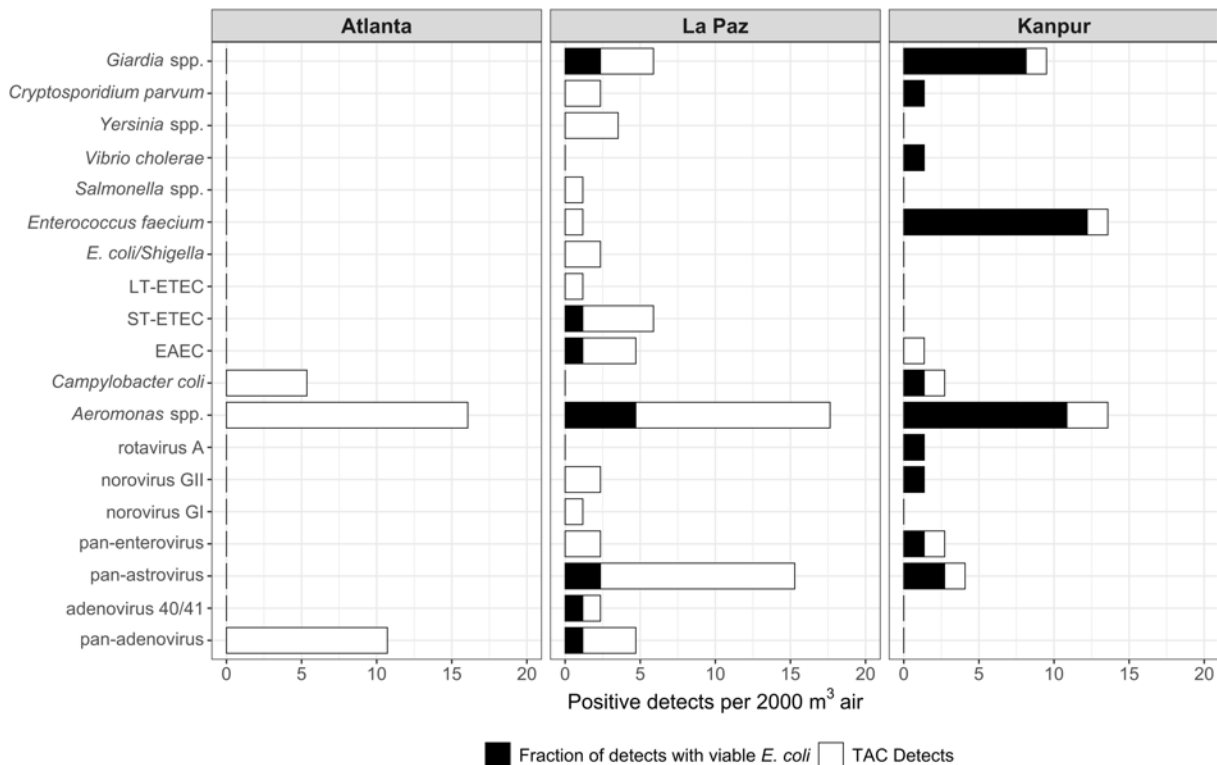
292 globally important enteric viruses, bacteria, and protozoa. To compare across cities where we collected  
293 different numbers of samples, we assessed detections in the context of total volume collected at each site,  
294 normalizing to 2000 m<sup>3</sup> for direct comparison. In La Paz, we detected genes associated with astrovirus  
295 and *Aeromonas* spp. in one of the three control samples. In Kanpur, we detected one each of the following  
296 molecular targets in control samples (n=8): adenovirus, non-typable rotavirus, *Aeromonas* spp.,  
297 EIEC/*Shigella* spp., and *Yersinia* spp. At the control site in Atlanta (n=6), we detected *Aeromonas* spp. in  
298 one sample.

299

300 Positive detections for *a priori*-defined enteric pathogen-associated gene targets were noteworthy in  
301 samples taken less than 1 km from known fecal waste flows in Kanpur and La Paz. In Kanpur, 53% of  
302 these samples (n=13) were positive for at least one target, 28% (n=10) were positive for at least two  
303 targets, and 3% (n=4) were positive for at least five targets. Among these positive detections were genes  
304 associated with two protozoan parasites (*Cryptosporidium parvum* and *Giardia duodenalis*), four viruses  
305 (pan-astrovirus, pan-enterovirus, norovirus GII, and rotavirus), and five bacteria (*Aeromonas* spp.,  
306 *Campylobacter coli*, pathogenic enteroaggregative *E. coli* (EAEC), *Enterococcus faecium*, and *Vibrio*  
307 *cholerae*). In La Paz, 76% of samples less than 1 km from known fecal waste flows (n=16) were positive  
308 for at least one target, 62% (n=13) were positive for at least two targets, and 19% (n=4) were positive for  
309 at least five targets. Among these positive detections were five viral targets (adenovirus 40/41, pan-  
310 adenovirus, pan-astrovirus, pan-enterovirus, and norovirus GII), and nine bacterial targets (*Aeromonas*  
311 spp., EAEC, ST-EPEC, heat labile (LT)-EPEC, EIEC/*Shigella* spp., *Enterococcus faecium*, *Salmonella*  
312 spp., and *Yersinia* spp.). In Atlanta, 6 of 13 total samples were positive for one target (46%). Targets  
313 detected included one virus (pan-adenovirus) and two bacteria (*Aeromonas* spp. and *Campylobacter coli*).

314 There were two Atlanta samples adjacent to the Chattahoochee River positive for adenovirus nucleic acid  
315 and one adjacent to Proctor Creek with *Campylobacter coli* nucleic acid, both above their respective 95%  
316 LODs (Table S2). The Chattahoochee commonly experiences levels of fecal indicator bacteria beyond  
317 EPA-recommended limits for recreational use, above 235 CFU per 100 mL<sup>86,113,114</sup>. To compare across

318 cities, we normalized the collection volume to 2000 m<sup>3</sup> and calculated the expected number of positives  
 319 based on measured values. We also highlight the fraction of samples with positive detects that also tested  
 320 positive for viable *E. coli* through culture (Figure 3). An estimated 25%, 76%, and 0% of samples  
 321 containing positive pathogen detects were accompanied by culturable *E. coli* in La Paz, Kanpur, and  
 322 Atlanta, respectively. We detected the highest pathogen diversity in La Paz, with genes specific to two  
 323 enteric protozoa, ten bacteria, and six viruses among pre-defined targets. In La Paz, we detected multiple  
 324 genes associated with a diverse array of pathogenic *E. coli* including EIEC/*Shigella*, LT and ST-ETEC,  
 325 and two gene targets for EAEC. In Kanpur, we detected genes associated with two protozoa, five bacteria,  
 326 and four viruses among pre-defined targets. In Atlanta, we detected gene targets associated with two  
 327 bacteria and one virus with no co-detection of culturable *E. coli*. A linear regression model revealed a  
 328 positive correlation between positive qPCR detects and viable *E. coli* detects in La Paz (p=0.02).



329  
 330 **Figure 3.** Positive detects via qPCR per 2000 m<sup>3</sup> air and the fraction of positive detects with co-detection  
 331 of culturable *E. coli* in the same sample.

332

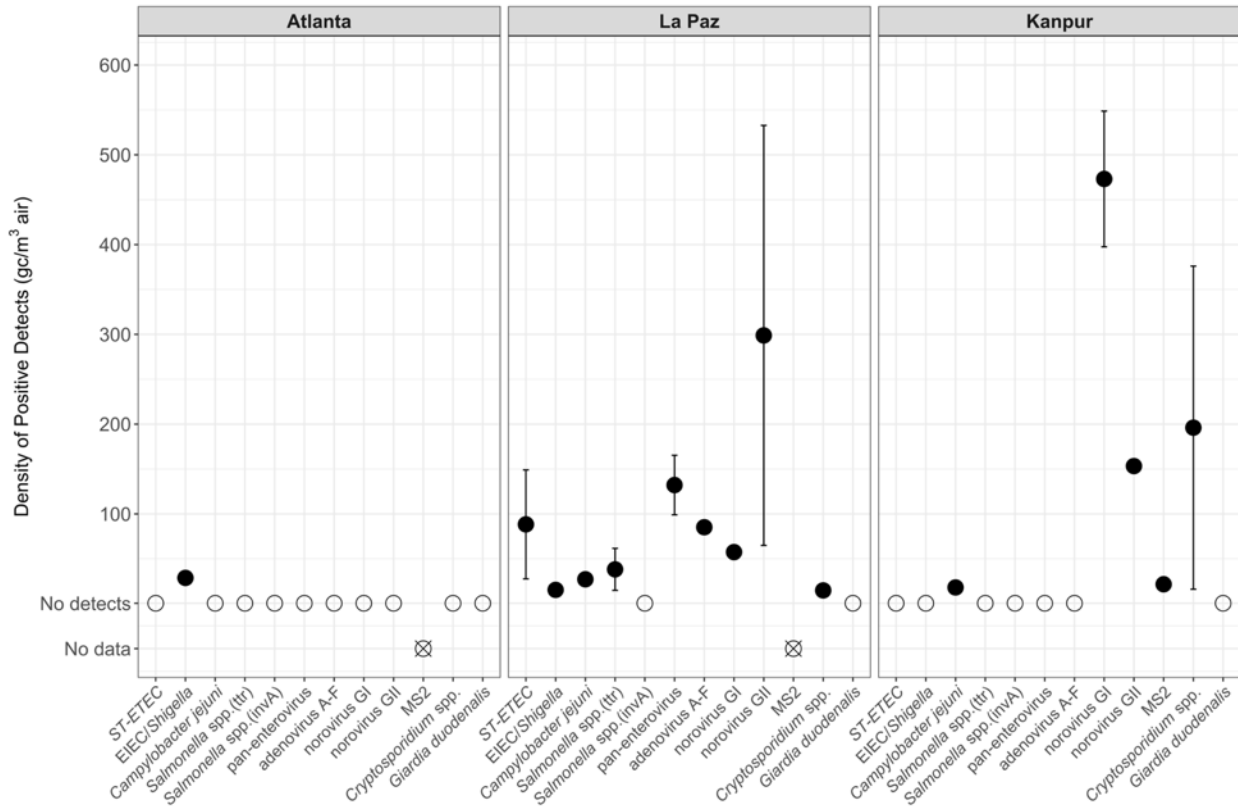
333 **Quantitative estimation of enteric microbes in aerosols.** We analyzed high-volume samples from the  
334 three sites for quantitative estimation of select, pre-defined gene targets associated with globally  
335 important enteric pathogens. We censored raw data using the 95% LOD as a conservative threshold for  
336 positivity. In Atlanta, we quantified *Shigella* spp./EIEC (3 detections). In La Paz, we quantified ST-ETEC  
337 (2 detections), *Shigella* spp./EIEC (16 detections), *Campylobacter jejuni* (2 detections), *Salmonella* spp.  
338 ttr gene (3 detections), pan-enterovirus (3 detections), adenovirus A-F (1 detection), norovirus GI (3  
339 detections), norovirus GII (3 detections), and *Cryptosporidium* spp. (3 detections). In Kanpur, we  
340 quantified *Campylobacter jejuni* (1 detection in 53), norovirus GI (33 detections), norovirus GII (1  
341 detection), MS2 (1 detection), and *Cryptosporidium* spp. (3 detections). Among the detections above the  
342 95% LOD threshold, target densities ranged from  $1.5 \times 10^1$  gc per  $m^3_{\text{air}}$  to  $4.7 \times 10^2$  gc per  $m^3_{\text{air}}$  (Figure 4).  
343  
344 We observed some differences in detection of enteric targets (gene copy density estimates) across  
345 meteorological variables, though interpretation of these associations is constrained by limited sample size.  
346 In La Paz, temperature was the only variable we measured that had a statistically significant effect on  
347 target density. In a stratified analysis from morning sample times only, our linear regression model  
348 showed that temperature was the only meteorological variable with any effect on target densities. In  
349 assessing the direct relationship between temperature and each target, we found that as temperature  
350 increased, pan-adenovirus, ST-ETEC, EIEC/*Shigella* spp., norovirus GI and norovirus GII density  
351 decreased ( $p=0.004$ ,  $p=0.01$ ,  $p=0.02$ ,  $p=0.03$ , and  $p=0.01$  respectively). We detected no significant effect  
352 of any variables on target densities later in the day. Ungrouped by time of day and with analysis restricted  
353 to average daily meteorological measurements, among all samples we detected no statistically significant  
354 effects of any variables we examined on pathogen target densities. When grouped by season in La Paz  
355 (rainy or dry), we found that *E. coli* density increased in the rainy season ( $p=0.05$ ), on average. Mean  
356 temperature, relative humidity, and UV were higher in the rainy season. In Kanpur, we observed higher  
357 norovirus GI and GII densities in the dry season, before the monsoon ( $p=0.00003$  and  $p=0.05$

358 respectively). Grouped only by time of day and not season, we detected norovirus GI at greater densities  
359 in the morning compared to samples taken in the afternoon ( $p=0.03$ ). In assessing the effects of  
360 meteorological measurements on target densities using a multivariable linear model, we found relative  
361 humidity to be the only variable with any effect on target densities. As relative humidity as measured by  
362 Vaisala increased, norovirus GI and GII density decreased ( $p=0.04$  and  $p=0.03$ ). A complete accounting  
363 of all relevant model results is included in the SI (Table S3).

364

365 We stratified data by distance from OWCs (for Kanpur and La Paz) or impacted urban water sources  
366 (Atlanta) (Figure 5). The number of unique targets detected decreased as distance from OWCs increased  
367 in La Paz and Kanpur. We observed a downward trend in density for one target in La Paz (*EIEC/Shigella*  
368 *spp.*) and Kanpur (norovirus GI). Overall, we observed a clear decrease ( $p=0.005$ ) in the probability of  
369 detecting any positive molecular pathogen target (including ddPCR and qPCR detections above LOD)  
370 between samples collected within 10 m and samples collected greater than 10 m from OWCs in La Paz  
371 and Kanpur and impacted urban surface waters in Atlanta. We also observed a decrease in the probability  
372 of detecting bacterial, viral, and protozoan molecular pathogen targets ( $p=0.006$ ,  $p=0.02$ , and  $p=0.009$   
373 respectively) between samples collected within 10 m and samples collected greater than 10 m from  
374 potential sources. We observed no differences in probability of detection across all targets by seasonality  
375 (rainy/dry) in La Paz and Kanpur.





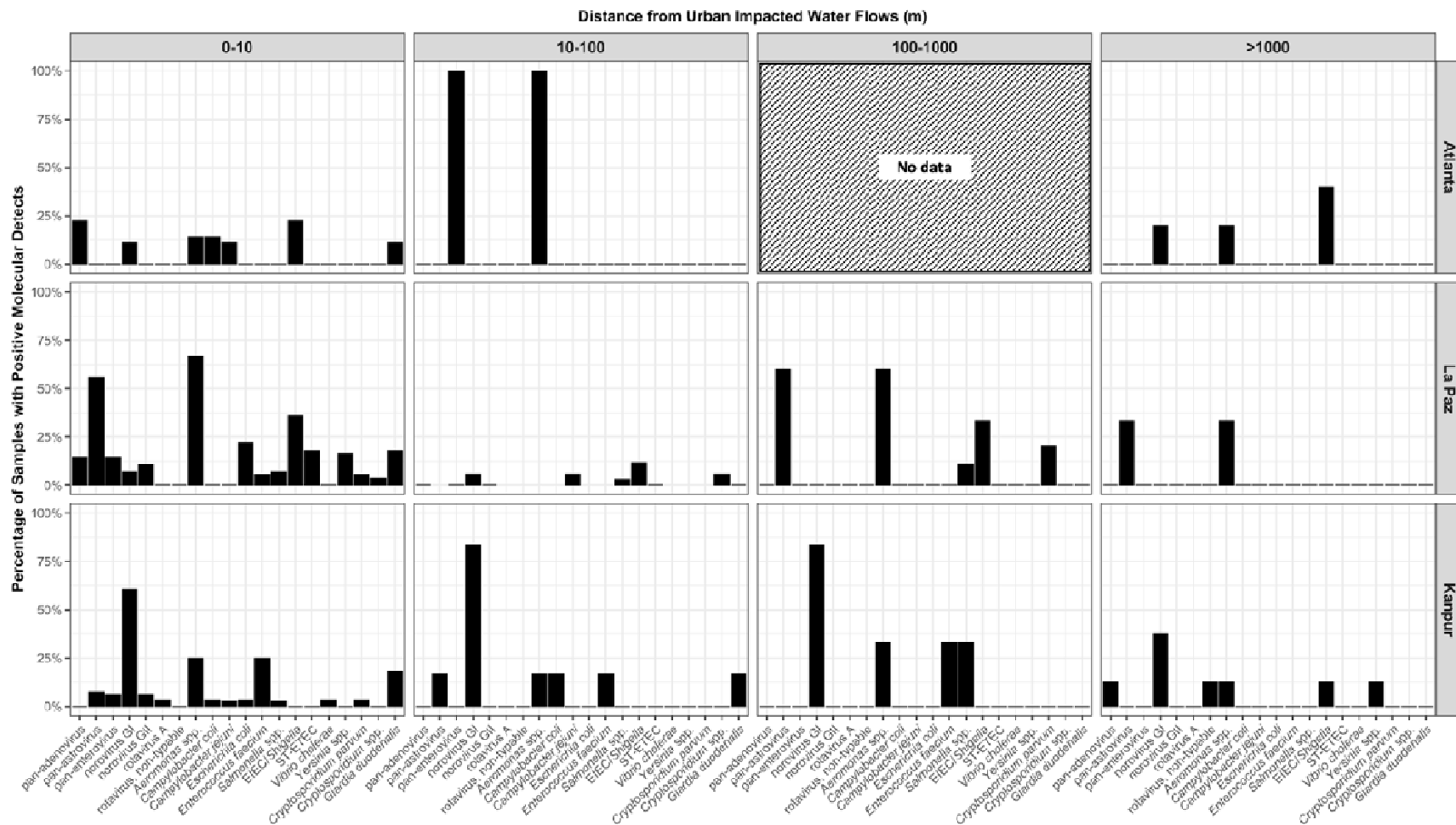
376

377

378

379

**Figure 4.** Mean densities of gene targets associated with enteric microbes with mean standard error bars as observed among the distribution of positive detects in gene copies per cubic meter of air. Densities were censored according to the assay-specific 95% limit of detection (LOD)



381  
382  
383  
384

**Figure 5.** Percentage of positive detects (via qPCR or ddPCR) in sample sets for each site versus straight-line distance from impacted water flows, where densities were censored according to the assay-specific 95% limit of detection (LOD).

385 **DISCUSSION**

386 Open sewers conveying domestic, institutional, commercial, and industrial effluent are common in cities  
387 in LMICs. They may also serve important drainage functions including flooding control. Sewers may be  
388 open to the atmosphere because solid waste can clog closed drains, and a lack of adequate solid waste  
389 management in some cities makes OWCs a rational approach to removing concentrated waste away from  
390 human habitation. They may pose risks, however, both to downstream communities and people in close  
391 proximity to open urban wastewater flows.

392

393 Our results suggest that in cities of LMICs with poor sanitation infrastructure and the presence of  
394 concentrated, uncontained fecal waste streams in open sewers, genes specific to enteric microbes, many  
395 pathogenic, are present in aerosols and may disseminate in the local environment. Overall, detection of  
396 fecal microbes in aerosols was higher than we expected at each of our study sites. The diversity and  
397 density of enteric microbes was enriched in La Paz and Kanpur compared with reference sampling in  
398 Atlanta and was greater near open wastewater canals and impacted surface waters compared to sites  
399 farther from known potential sources. The co-detection of culturable *E. coli* in a high percentage of  
400 samples in La Paz and in Kanpur suggests, indirectly, that some bacterial pathogens detected could have  
401 been viable at the point of sampling. We observed no culturable *E. coli* in aerosols sampling in Atlanta.  
402 The health risk implications of the presence of aerosolized enteric microbes in these settings are unknown  
403 but merit further study.

404

405 Our study included a range of pathogen targets of global public health relevance, many of which have not  
406 been previously detected in urban outdoor aerosols where infection risk is a clear possibility due to the  
407 proximity of concentrated waste and high population density. In La Paz, we quantified ST-ETEC in two  
408 aerosol samples at densities of 28 gc/m<sup>3</sup><sub>air</sub> and 150 gc/m<sup>3</sup><sub>air</sub>. ETEC was responsible for 50,000 deaths  
409 worldwide in 2016<sup>115</sup> but has not been previously quantified in extramural aerosols in cities where  
410 transmission is endemic. Also in La Paz, we report the first quantitative estimate of EIEC/*Shigella (ipaH*

411 gene, n=16) in a similar setting at densities ranging from 1.8 gc/m<sup>3</sup><sub>air</sub> to 53 gc/m<sup>3</sup><sub>air</sub>. We detected and  
412 quantified other enteric bacteria not previously observed in extramural urban aerosols such as  
413 *Campylobacter coli* and *Salmonella* spp., though they have been previously quantified in air near  
414 concentrated animal feeding operations<sup>116,117</sup>.

415  
416 We observed comparable prevalence of *Aeromonas* spp. associated nucleic acids in Atlanta, La Paz, and  
417 Kanpur with 8, 9, and 7 positive detections per 2000 m<sup>3</sup><sub>air</sub> at each site respectively. *Aeromonas* spp. have  
418 been consistently detected in environmental media in a variety of settings<sup>118</sup>. Although some aeromonads  
419 are important human pathogens, in 2016 *Aeromonas* spp. were responsible for only 1% of total diarrheal  
420 deaths and only 19 of 36 subtypes are known to be pathogenic.<sup>115,119</sup>

421  
422 Among viral detects in Kanpur and in La Paz, norovirus GI and GII may be most relevant to health. We  
423 detected norovirus GI and GII at the highest average density across all targets in Kanpur aerosol samples  
424 (320 gc/m<sup>3</sup><sub>air</sub> and 150 gc/m<sup>3</sup><sub>air</sub> respectively). In La Paz, we detected norovirus GII at the highest average  
425 density across all targets (13 gc/m<sup>3</sup><sub>air</sub>) and norovirus GI at a mean of 2.4 gc/m<sup>3</sup><sub>air</sub>. Norovirus is relatively  
426 resistant to inactivation in environmental media<sup>120</sup>, may persist on environmental surfaces for up to two  
427 weeks<sup>121</sup>, has been shown to survive in aerosols<sup>122-126</sup>, and has an estimated relatively low median  
428 infectious dose between 18 and 10<sup>3</sup> virus particles<sup>127</sup>. It is among the most widely prevalent viral enteric  
429 pathogens, globally, with an estimated 33,000 cases and 20,000 deaths per year<sup>115,128,129</sup>. Norovirus  
430 transport through bioaerosols and subsequent deposition and indirect exposure through ingestion remains  
431 poorly characterized.

432  
433 We are aware of only one previous study reporting detection of enteric protozoan parasites in air samples,  
434 from rural Mexico, by microscopy; the study reported 8 of 12 samples positive for *Cryptosporidium* and  
435 10 of 12 samples positive for *Giardia*, possibly via aerosolization of soil<sup>130</sup>. By comparison we detected  
436 *Giardia duodenalis* via qPCR in 22% of samples in La Paz and 18% of samples in Kanpur, with 3 and 5

437 positive detections per 2000 m<sup>3</sup><sub>air</sub> at each site respectively. *Cryptosporidium* was present in 9% and 3% of  
438 samples in La Paz and Kanpur respectively with 1 positive detection per 2000 m<sup>3</sup><sub>air</sub> at both sites. We  
439 quantified *Cryptosporidium* spp. in aerosol samples via ddPCR in La Paz (n=3) and in India (n=2) at  
440 average densities ranging from 9.3 gc/m<sup>3</sup><sub>air</sub> to 560 gc/m<sup>3</sup><sub>air</sub>, the second time *Cryptosporidium* has been  
441 reported in an aerosol and the first quantitative estimate. *Cryptosporidium* is among the most prevalent  
442 etiologies of moderate to severe diarrhea globally<sup>102,131</sup>.

443  
444 A small number of previous studies have identified the likely presence of aerosolized fecal material and  
445 potential for pathogen transmission in bioaerosols in similar settings. Our previous studies in La Paz and  
446 Kanpur reported detection of culturable *Enterobacteriaceae* and *E. coli* in ambient urban air that was  
447 hypothesized to also originate from OWCs<sup>132-134</sup>. A study in Malawi measured the presence of enteric  
448 microbes in ambient air (enterotoxigenic *E. coli*) before, during, and after pit latrine emptying, confirming  
449 that these microbes increased in nearby aerosols during pit latrine emptying events<sup>67</sup>. In 22 samples of  
450 outdoor aerosols collected in Mumbai, 28 species of culturable bacteria were identified including several  
451 opportunistic pathogens: *Staphylococcus* spp., *Serratia plymuthica*, *Serratia haemolyticus*, and  
452 *Enterobacter aerogenes*<sup>60</sup>. Bacterial bioaerosols including opportunistic pathogens have similarly been  
453 identified using 16S rDNA sequencing near composting facilities in India<sup>56</sup>. *Staphylococcus aureus* and  
454 other opportunistic pathogens have been identified in urban environments in the Philippines<sup>135</sup>. A larger  
455 study from Beijing, China identified many of the same genera in addition to 16 species of *Pseudomonas*  
456 (some potential opportunistic pathogens) and the possibly fecal-associated genera *Enterococcus*,  
457 *Escherichia*, *Vibrio*, and *Yersinia*<sup>59</sup>.

458  
459 The concurrent detection of culturable *E. coli* in many samples from La Paz and Kanpur suggests that  
460 some of these important pathogenic bacteria (including pathogenic *E. coli*), viruses, and protozoa we  
461 detected may have been viable at the point of sampling<sup>136</sup>. As a commonly used fecal indicator bacterium,  
462 *E. coli* suggests – though does not conclusively demonstrate – the presence of aerosolized fecal material

463 in samples<sup>137</sup>. Culturable *E. coli* also may indicate recently aerosolized material, since vegetative bacteria  
464 are not persistent in the aerosolized state and may be quickly inactivated if ideal conditions are not  
465 met.<sup>102</sup> Other sanitation-related pathogens, such as those showing greater persistence in the environment  
466 (e.g., *Cryptosporidium* oocysts) may persist for longer periods in environmental media<sup>138</sup> than co-  
467 occurring vegetative bacteria<sup>139</sup>, suggesting that culturable *E. coli* may conservatively represent the  
468 potential viability of other enteric pathogens, particularly protozoa. We further note that we have used  
469 culturable *E. coli* as an indicator of viability only, rather than an indicator of exposure risk: no relevant  
470 standards for *E. coli* or other FIB in aerosols exist that would indicate a threshold of exposure risk in  
471 these settings. Also, differences in methods for *E. coli* capture and culture were different across sites  
472 preventing a direct quantitative comparison of the data to inform risk on the basis of *E. coli* counts. More  
473 work on the comparative survival of pathogens in extramural aerosols is needed. However, such studies  
474 are challenging to conduct, because the methods for capturing aerosolized enteric pathogens at low  
475 densities – requiring high flow-rates – are not ideal for preserving viability<sup>140–142</sup>.

476  
477 Size-resolved densities of culturable *E. coli* indicate the presence of enteric bacteria in aerosols ranging  
478 from 0.6  $\mu\text{m}$  to 7  $\mu\text{m}$ . Culturable *E. coli* that were captured under 2.1  $\mu\text{m}$ <sup>112</sup> indicate possible suspension  
479 of bioaerosols over a period of hours, with a settling velocity in still air of 0.5 m/hour for a typical particle  
480 with a 2  $\mu\text{m}$  diameter<sup>143</sup>, indicating high transport potential in air near OWCs. Larger diameters indicate  
481 that the fecal bacteria may deposit on surfaces more rapidly. The size-resolved density estimates of FIB  
482 may or may not indicate the size ranges associated with other enteric microbes, including viral and  
483 protozoan pathogens, but may be useful as an initial proxy for use in transport modeling for enteric  
484 microbes. Though more work is needed to characterize exposure potential based on aerosol size, and  
485 although some enteric pathogens have been known to cause respiratory infections<sup>144–146</sup>, the most likely  
486 pathways of exposure relevant to bioaerosols in this setting are associated with surface deposition of  
487 pathogens and subsequent transport via other well understood pathways represented in the F-diagram<sup>5</sup>.

488

489 There is some epidemiological evidence that proximity to concentrated fecal waste streams in urban areas  
490 can be related to enteric infection risk. Contreras *et al.*<sup>147</sup>, assessing the spatial relationship between  
491 household proximity to fecal contaminated surface water canals used for crop irrigation and diarrheal  
492 disease in children in multiple municipalities in the Mezquital Valley in Mexico, determined that  
493 compared to children under 5 living within 10 m from a canal, children living 100 m from a canal had  
494 45% lower odds of diarrhea and children living 1000 m from a canal had 70% lower odds of diarrhea.  
495 They further estimated that 24% of all diarrheal cases in the study and 50% of all cases within 100 m  
496 from a canal were attributable to canal exposure. The authors posited aerosolization of pathogens from  
497 canals as a potential pathway of exposure in this setting. Our results confirm the presence of enteric  
498 pathogens in aerosols at these distances and we report a statistically significant decrease in bacterial, viral,  
499 and protozoan molecular detects as distance increases from a potential source. Though the density range  
500 of gene copies per m<sup>3</sup> that we quantified in aerosols is lower than what we might find in concentrated  
501 sources such as wastewaters, microbial infection risks attributable to aerosols in these settings cannot be  
502 ruled out given co-detection of culturable FIB and close proximity to population centers. Important next  
503 steps include further epidemiological studies examining risks attributable to this pathway as well as  
504 mechanistic studies including quantitative microbial risk assessment. Such studies would be useful in  
505 estimating both direct and indirect infection risks that account for microbial transport and viability in  
506 aerosols and following deposition via other pathways of relevance in fecal-oral transmission, including  
507 comparative risk assessment that examines the relative contributions of multiple pathways of exposure.  
508 Our quantitative estimates of specific pathogens are a necessary first step towards further work in  
509 understanding the implications of the presence of these microbes in air, including fate and transport  
510 modeling and risk assessment.

511

512 This study had a number of important limitations that deserve consideration. First, the viability of enteric  
513 pathogens detected by molecular methods in aerosols cannot be assumed, even with co-culture of fecal

514 indicator bacteria. Although *E. coli* viability in samples may indirectly indicate potential viability of other  
515 microbes present in bioaerosols, and vegetative bacteria may represent a conservative proxy since  
516 they have been shown to survive relatively poorly in aerosols<sup>138,148</sup>, we did not measure viability of other  
517 microbes directly. The methods we used for high-volume samples present high pressure and desiccating  
518 conditions that may reduce viability of microbes captured on the filter<sup>149</sup>, and may also have resulted in an  
519 underestimation of culturable total coliforms and *E. coli* in Kanpur; in contrast, the ACI used in Bolivia  
520 and Atlanta is suitable for coliform survival and growth since bioaerosols are impacted at a lower flow  
521 rate onto nutrient-rich, semi-solid agar media. High-volume aerosol sampling generally presents  
522 conditions that are known to limit recovery of viable microbes<sup>150</sup>. Capture methods that preserve viability,  
523 such as impingement<sup>65</sup> and water-vapor condensation<sup>28</sup> typically operate at relatively low flow rates (8 -  
524 13 liters per minute), requiring extended periods to capture targets present at low densities. We further  
525 acknowledge that pathogen-specific nucleic acids in aerosols could be attributable to either viable or  
526 inactivated microbes, or may exist as extracellular genetic material in the environment. Second, while our  
527 data suggest concentrated fecal waste streams as potential sources of aerosolized sanitation-related  
528 microbes in nearby air samples, and we observed a trend of decreasing density with increasing distance  
529 from fecal waste streams, we cannot definitively conclude that enteric microbes in aerosols derive from  
530 these sources. Cities with poor sanitation infrastructure typically have many contaminated sites, including  
531 OWCs and drains but also open latrine pits<sup>67,151</sup>, composting sites<sup>56</sup>, or uncontained solid waste<sup>152,153</sup>.  
532 Animals and animal waste may be common and could be aerosolized. Further work is needed on methods  
533 for source-tracking of bioaerosols, including via sequencing approaches. Third, our molecular results are  
534 likely conservative representations of target densities in ambient air of the sampling locations based on  
535 laboratory experiments with the high-volume sampler that reveal recovery efficiencies of 1  $\mu\text{m}$  particles  
536 ranging from 73% in conditions most similar to those of our study<sup>150</sup> to 101% under controlled laboratory  
537 conditions<sup>154</sup>. Finally, this study included a limited sample size across the wide range of fecal-related  
538 targets we sought, constraining statistical power for assessment of risk factors for pathogen detection  
539 across sites. Further studies of specific pathogen transport under specific controlled conditions are needed



540 to fully describe mechanisms of aerosolization, transport, deposition, viability and persistence in aerosols,  
541 and risk of exposure to humans.

542

543 We highlight aerosol transport as playing a potentially important and understudied role in the spread of  
544 microbes originating in fecal wastes in outdoor environments with uncertain implications for human  
545 exposure, infection, and disease transmission. Fecal-oral transmission of enteric pathogens is often  
546 summarized in the so-called F-diagram, describing key media that serve as direct and indirect sources of  
547 enteric pathogen spread: water, soil, hands, fomites and surfaces, food, and flies<sup>5,155,156</sup>. It is possible that  
548 aerosols should be added to this conceptual framework contingent on further work in this area. Aerosols  
549 may allow for transport of enteric pathogens between and among media, contributing to the spread of  
550 fecal contamination and associated microbes, resulting in potential for greater exposure via contact,  
551 inhalation, or ingestion either directly or indirectly following deposition on a surface, food, water or other  
552 subsequent exposure pathway<sup>6,147</sup>. In many settings, multiple relevant pathways of exposure may exist<sup>157</sup>,  
553 and aerosols may be one more whose risk relevance remains uncharacterized but cannot be excluded from  
554 consideration. There have been no previous attempts to estimate the global, national, or local burdens of  
555 morbidity and mortality attributable to airborne transmission of enteric pathogens in urban outdoor  
556 environments, partly because this phenomenon is poorly understood and has not been studied in either  
557 epidemiological research or risk assessment at scale. Indeed, our paper is the first to quantitatively  
558 describe the potential for transmission in settings where enteric pathogens are common and therefore  
559 represent potentially important exposure risks. We hope this work stimulates further work in  
560 epidemiology and infectious disease research to advance further understanding of this pathway and to  
561 estimate attributable burdens of disease and death, where appropriate. A complete accounting of enteric  
562 pathogen transport is required to design intervention strategies with the potential to control exposures. In  
563 high-burden settings such as rapidly densifying cities in LMICs with poor sanitation, enteric pathogen  
564 transport via aerosols near concentrated fecal waste flows merits further investigation. Direct measures of  
565 pathogen viability and persistence in aerosols, exposure modeling, quantitative microbial risk assessment,

566 and epidemiological studies would be useful next steps in further characterizing the public health  
567 relevance of this phenomenon.

568  
569 **SUPPORTING INFORMATION**

570

571 Tables: 3

572 Figures: 3

573 Pages: 21

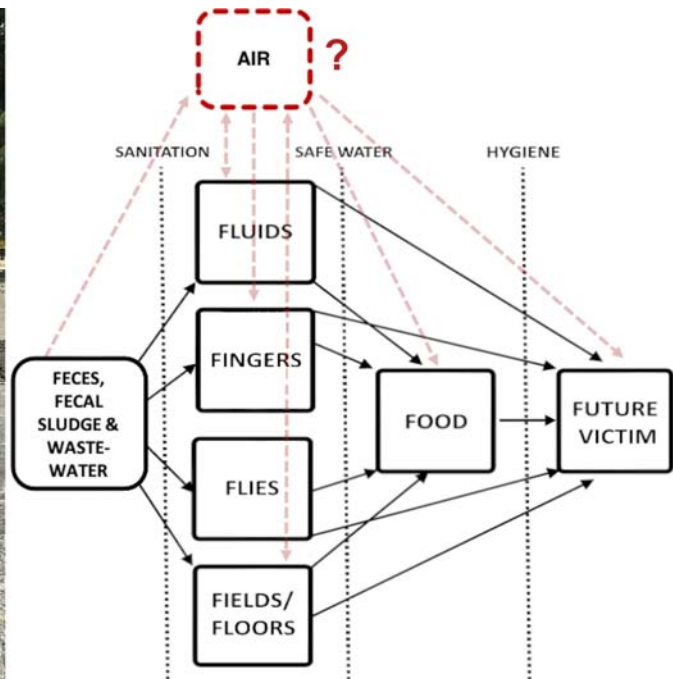
574  
575 **ACKNOWLEDGEMENTS**

576 This material is based upon work supported by the National Science Foundation under grant number  
577 1653226. Many thanks to colleagues at IIT-Kanpur including Hari Shankar, Harish Vishwakarma,  
578 Shivshankar Mishraa and numerous others who helped with instrumentation and shared their laboratory  
579 space. We further acknowledge the kind people who shared their homes and their tea with us as we  
580 sampled in the community. Thanks to all colleagues at Universidad Católica Boliviana and Universidad  
581 Mayor de San Andrés, including undergraduate assistants.

582 TOC ART: FOR TABLE OF CONTENTS ONLY

583

584



585

586

## 587 REFERENCES

588 (1) WHO; UNICEF. *Progress on Household Drinking Water, Sanitation and Hygiene 2000-2017.*

589 *Special Focus on Inequalities*; 2019.

590 (2) Peal, A.; Evans, B.; Blackett, I.; Hawkins, P.; Heymans, C. Fecal Sludge Management: A

591 Comparative Analysis of 12 Cities. *J. Water, Sanit. Hyg. Dev.* **2014**, 4 (4), 563.

592 (3) Berendes, D. M.; Sumner, T. A.; Brown, J. M. Safely Managed Sanitation for All Means Fecal

593 Sludge Management for at Least 1.8 Billion People in Low and Middle Income Countries.

594 *Environ. Sci. Technol.* **2017**, 51 (5), 3074–3083.

595 (4) Rietveld, L. C.; Siri, J. G.; Chakravarty, I.; Arsénio, A. M.; Biswas, R.; Chatterjee, A. Improving

596 Health in Cities through Systems Approaches for Urban Water Management. *Environ. Health* **15.**

597 *S31*, **2016**..

598 (5) Wagner, E. G.; Lanoix, J. N. *Excreta Disposal for Rural Areas and Small Communities*; World

- 599 Health Organization, 1958.
- 600 (6) de Man, H.; Heederik, D. D. J.; Leenen, E. J. T. M.; de Roda Husman, A. M.; Spithoven, J. J. G.;  
601 van Knapen, F. Human Exposure to Endotoxins and Fecal Indicators Originating from Water  
602 Features. *Water Res.* **2014**, *51*, 198–205.
- 603 (7) Walls, P. L. L.; Bird, J. C.; Bourouiba, L. Moving with Bubbles: A Review of the Interactions  
604 between Bubbles and the Microorganisms That Surround Them. *Integr. Comp. Biol.* **2014**, *54* (6),  
605 1014–1025.
- 606 (8) Bourouiba, L.; Bush, J. W. M. Drops and Bubbles in the Environment. *Handb. Environ. Fluid*  
607 *Dyn. Vol. One Overv. Fundam.* **2012**, 427–439.
- 608 (9) Poulain, S.; Villermaux, E.; Bourouiba, L. Ageing and Burst of Surface Bubbles. *J. Fluid Mech.*  
609 **2018**, *851*, 636–671.
- 610 (10) Schmale, D. G.; Ross, S. D. Highways in the Sky: Scales of Atmospheric Transport of Plant  
611 Pathogens. *Annu. Rev. Phytopathol.* **2015**, *53* (1), 591–611.
- 612 (11) Kim, S.; Park, H.; Gruszewski, H. A.; Schmale, D. G.; Jung, S. Vortex-Induced Dispersal of a  
613 Plant Pathogen by Raindrop Impact. *Proc. Natl. Acad. Sci. U. S. A.* **2019**, *116* (11), 4917–4922.
- 614 (12) Dueker, M. E. Connecting Water Quality With Air Quality Through Microbial Aerosols, 2012.
- 615 (13) Inizan, M. Turbulence-Particle Interactions on Surfaces. *Massachusetts Inst. Technol.* **2018**, 110.
- 616 (14) Alsved, M.; Bourouiba, L.; Duchaine, C.; Löndahl, J.; Marr, L. C.; Parker, S. T.; Prussin, A. J.;  
617 Thomas, R. J. Natural Sources and Experimental Generation of Bioaerosols: Challenges and  
618 Perspectives. *Aerosol Sci. Technol.* **2020**, *54* (5), 547–571.
- 619 (15) Griffin, D. W. Atmospheric Movement of Microorganisms in Clouds of Desert Dust and  
620 Implications for Human Health. *Clin. Microbiol. Rev.* **2007**, *20* (3), 459–477.
- 621 (16) Joung, Y. S.; Ge, Z.; Buie, C. R. Bioaerosol Generation by Raindrops on Soil. *Nat. Commun.*  
622 **2017**, *8*, 1–10.
- 623 (17) Rathnayake, C. M.; Metwali, N.; Jayarathne, T.; Kettler, J.; Huang, Y.; Thorne, P. S.;  
624 O’Shaughnessy, P. T.; Stone, E. A. Influence of Rain on the Abundance of Bioaerosols in Fine

- 625 and Coarse Particles. *Atmos. Chem. Phys.* **2017**, *17* (3), 2459–2475.
- 626 (18) Joung, Y. S.; Buie, C. R. Aerosol Generation by Raindrop Impact on Soil. *Nat. Commun.* **2015**, *6*  
627 (May 2014), 1–9.
- 628 (19) Heo, K. J.; Kim, H. B.; Lee, B. U. Concentration of Environmental Fungal and Bacterial  
629 Bioaerosols during the Monsoon Season. *J. Aerosol Sci.* **2014**, *77*, 31–37.
- 630 (20) Brodie, E. L.; DeSantis, T. Z.; Parker, J. P. M.; Zubietta, I. X.; Piceno, Y. M.; Andersen, G. L.  
631 Urban Aerosols Harbor Diverse and Dynamic Bacterial Populations. *Proc. Natl. Acad. Sci.* **2007**,  
632 *104* (1), 299–304.
- 633 (21) Rajput, P.; Anjum, M. H.; Gupta, T. One Year Record of Bioaerosols and Particles Concentration  
634 in Indo-Gangetic Plain: Implications of Biomass Burning Emissions to High-Level of Endotoxin  
635 Exposure. *Environ. Pollut.* **2017**, *224*, 98–106.
- 636 (22) Rathnayake, C. M. Bioaerosols in the Midwestern United States: Spatio-Temporal Variations,  
637 Meteorological Impacts and Contributions to Particulate Matter. University of Iowa, **2016**.
- 638 (23) Dueker, M. E.; O’Mullan, G. D. Aeration Remediation of a Polluted Waterway Increases Near-  
639 Surface Coarse and Culturable Microbial Aerosols. *Sci. Total Environ.* **2014**, *478*, 184–189.
- 640 (24) Montero, A.; Dueker, M. E.; O’Mullan, G. D. Culturable Bioaerosols along an Urban Waterfront  
641 Are Primarily Associated with Coarse Particles. *PeerJ*, **2016**, 4:e2827.
- 642 (25) Gotkowska-Plachta, A.; Filipkowska, Z.; Korzeniewska, E.; Janczukowicz, W.; Dixon, B.; Golas,  
643 I.; Szwalgin, D. Airborne Microorganisms Emitted from Wastewater Treatment Plant Treating  
644 Domestic Wastewater and Meat Processing Industry Wastes. *CLEAN-SOIL AIR WATER* **2013**, *41*  
645 (5), 429–436.
- 646 (26) Yang, K.; Li, L.; Wang, Y.; Xue, S.; Han, Y.; Liu, J. Airborne Bacteria in a Wastewater Treatment  
647 Plant: Emission Characterization, Source Analysis and Health Risk Assessment. *Water Res.* **2018**,  
648 *149*, 596–606.
- 649 (27) Wang, L.; Wang, Y.; Ye, D.; Liu, Q. A Review of the 2019 Novel Coronavirus (COVID-19)  
650 Based on Current Evidence. *Int. J. Antimicrob. Agents* **2020**, No. xxxx, 105948.

- 651 (28) Lednicky, J. A.; Lauzardo, M.; Fan, Z. H.; Jutla, A. S.; Tilly, T. B.; Gangwar, M.; Usmani, M.;  
652 Shankar, S. N.; Mohamed, K.; Eiguren-Fernandez, A.; et al. Viable SARS-CoV-2 in the Air of a  
653 Hospital Room with COVID-19 Patients. *medRxiv* **2020**, No. 1, 1–20.
- 654 (29) Prather, K. A.; Marr, L. C.; Schooley, R. T.; McDiarmid, M. A.; Wilson, M. E.; Milton, D. K.  
655 Airborne Transmission of SARS-CoV-2. *Science (80-. )*. **2020**, *370* (6514), 303–304.
- 656 (30) Tellier, R. Review of Aerosol Transmission of Influenza A Virus. *Emerg. Infect. Dis.* **2006**, *12*  
657 (11), 1657–1662.
- 658 (31) Bridges, C. B.; Kuehnert, M. J.; Hall, C. B. Transmission of Influenza: Implications for Control in  
659 Health Care Settings. *Clin. Infect. Dis.* **2003**, *37* (8), 1094–1101.
- 660 (32) Fannin, K. F.; Vana, S. C.; Jakubowski, W. Effect of an Activated Sludge Wastewater Treatment  
661 Plant on Ambient Air Densities of Aerosols Containing Bacteria and Viruses. **1985**, *49* (5), 1191–  
662 1196.
- 663 (33) Benami, M.; Busgang, A.; Gillor, O.; Gross, A. Quantification and Risks Associated with  
664 Bacterial Aerosols near Domestic Greywater-Treatment Systems. *Sci. Total Environ.* **2016**, *562*,  
665 344–352.
- 666 (34) Sawyer, B.; Rao, K. C.; O’Brien, P.; Elenbogen, G.; Zenz, D. R.; Lue-Hing, C. Changes in  
667 Bacterial Aerosols with Height above Aeration Tanks. *Journal of Environmental Engineering*.  
668 1996.
- 669 (35) Vermeulen, L. C.; Brandsema, P. S.; Kasstele, J. Van De; Bom, B. C. J.; Sterk, H. A. M.; Sauter,  
670 J.; Berg, H. H. J. L. Van Den; Husman, A. M. D. R. Atmospheric Dispersion and Transmission of  
671 Legionella from Wastewater Treatment Plants: A 6-Year Case-Control Study. *Int. J. Hyg.*  
672 *Environ. Health* **2021**, *237*, 113811.
- 673 (36) Lin, K.; Marr, L. C. Aerosolization of Ebola Virus Surrogates in Wastewater Systems. *Environ.*  
674 *Sci. Technol.* **2017**, *51* (5), 2669–2675.
- 675 (37) Sánchez-Monedero, M. A.; Aguilar, M. I.; Fenoll, R.; Roig, A. Effect of the Aeration System on  
676 the Levels of Airborne Microorganisms Generated at Wastewater Treatment Plants. *Water Res.*

- 677           **2008**, *42* (14), 3739–3744.
- 678   (38)   Gangamma, S.; Patil, R. S.; Mukherji, S. Characterization and Proinflammatory Response of  
679           Airborne Biological Particles from Wastewater Treatment Plants. *Environ. Sci. Technol.* **2011**, *45*  
680           (8), 3282–3287.
- 681   (39)   Lue-Hing, C.; Zenz, D. R.; Sedita, S. J. Environmental Impact of the Microbial Aerosol Emissions  
682           From Wastewater Treatment Plants. *Water Sci. Technol.* **1982**, *14*, 289–309.
- 683   (40)   Cronholm, L. S. Potential Health Hazards from Microbial Aerosols in Densely Populated Urban  
684           Regions Potential Health Hazards from Microbial Aerosols in Densely Populated Urban Regions.  
685           **1980**, *39* (1), 6–12.
- 686   (41)   Heinonen-Tanski, H.; Reponen, T.; Koivunen, J. Airborne Enteric Coliphages and Bacteria in  
687           Sewage Treatment Plants. *Water Res.* **2009**, *43* (9), 2558–2566.
- 688   (42)   Paez-Rubio, T.; Viau, E.; Romero-Hernandez, S.; Peccia, J. Source Bioaerosol Concentration and  
689           RRNA Gene-Based Identification of Microorganisms Aerosolized at a Flood Irrigation  
690           Wastewater Reuse Site. *Appl. Environ. Microbiol.* **2005**, *71* (2), 804–810.
- 691   (43)   Sawyer, B.; Elenbogen, G.; Rao, K. C.; O'Brien, P.; Zenz, D. R.; Lue-Hing, C. Bacterial Aerosol  
692           Emission Rates from Municipal Wastewater Aeration Tanks. *Appl. Environ. Microbiol.* **1993**, *59*  
693           (10), 3183–3186.
- 694   (44)   Dungan, R. S. Estimation of Infectious Risks in Residential Populations Exposed to Airborne  
695           Pathogens during Center Pivot Irrigation of Dairy Wastewaters. *Environ. Sci. Technol.* **2014**, *48*  
696           (9), 5033–5042.
- 697   (45)   Tanner, B. D.; Brooks, J. P.; Gerba, C. P.; Haas, C. N.; Josephson, K. L.; Pepper, I. L. Estimated  
698           Occupational Risk from Bioaerosols Generated during Land Application of Class B Biosolids. *J.*  
699           *Environ. Qual.* **2008**, *37* (6), 2311.
- 700   (46)   Viau, E.; Bibby, K.; Paez-Rubio, T.; Peccia, J. Toward a Consensus View on the Infectious Risks  
701           Associated with Land Application of Sewage Sludge. *Environ. Sci. Technol.* **2011**, *45* (13), 5459–  
702           5469.

- 703 (47) Paez-Rubio, T.; Ramarui, A.; Sommer, J.; Xin, H.; Anderson, J.; Peccia, J. Emission Rates and  
704 Characterization of Aerosols Produced during the Spreading of Dewatered Class B Biosolids.  
705 *Environ. Sci. Technol.* **2007**, *41* (10), 3537–3544.
- 706 (48) Pillai, S. D. Bioaerosols from Land-Applied Biosolids: Issues and Needs. *Water Environ. Res.*  
707 **2007**, *79* (3), 270–278.
- 708 (49) Brooks, J. P.; Tanner, B. D.; Josephson, K. L.; Gerba, C. P.; Haas, C. N.; Pepper, I. L. A National  
709 Study on the Residential Impact of Biological Aerosols from the Land Application of Biosolids. *J.*  
710 *Appl. Microbiol.* **2005**, *99* (2), 310–322.
- 711 (50) Brooks, J. P.; Gerba, C. P.; Pepper, I. L. Diversity of Aerosolized Bacteria during Land  
712 Application of Biosolids. *J. Appl. Microbiol.* **2007**, *103* (5), 1779–1790.
- 713 (51) Brooks, J. P.; Tanner, B. D.; Gerba, C. P.; Haas, C. N.; Pepper, I. L. Estimation of Bioaerosol Risk  
714 of Infection to Residents Adjacent to a Land Applied Biosolids Site Using an Empirically Derived  
715 Transport Model. *J. Appl. Microbiol.* **2005**, *98* (2), 397–405.
- 716 (52) Baertsch, C.; Paez-Rubio, T.; Viau, E.; Peccia, J. Source Tracking Aerosols Released from Land-  
717 Applied Class B Biosolids during High-Wind Events. *Appl. Environ. Microbiol.* **2007**, *73* (14),  
718 4522–4531.
- 719 (53) Shuval, H. I.; Guttman-Bass, N.; Applebaum, J.; Fattal, B. Aerosolized Enteric Bacteria and  
720 Viruses Generated by Spray Irrigation of Wastewater. *Water Sci. Technol.* **1989**, *21* (3), 131–135.
- 721 (54) Teltsch, B.; Katzenelson, E. Airborne Enteric Bacteria and Viruses from Spray Irrigation with  
722 Wastewater. *Appl. Environ. Microbiol.* **1978**, *35* (2), 290–296.
- 723 (55) Pankhurst, L. J.; Akeel, U.; Hewson, C.; Maduka, I.; Pham, P.; Saragossi, J.; Taylor, J.; Lai, K. M.  
724 Understanding and Mitigating the Challenge of Bioaerosol Emissions from Urban Community  
725 Composting. *Atmos. Environ.* **2011**, *45* (1), 85–93.
- 726 (56) Pahari, A. K.; Dasgupta, D.; Patil, R. S.; Mukherji, S. Emission of Bacterial Bioaerosols from a  
727 Composting Facility in Maharashtra, India. *Waste Manag.* **2016**, *53*, 22–31.
- 728 (57) Gao, X.; Shao, M.; Luo, Y.; Dong, Y.; Ouyang, F.; Dong, W.; Li, J. Airborne Bacterial



- 729 Contaminations in Typical Chinese Wet Market with Live Poultry Trade. *Sci. Total Environ.* **2016**,  
730 572, 681–687.
- 731 (58) Cronholm, L. S. Potential Health Hazards from Microbial Aerosols in Densely Populated Urban  
732 Regions. **1980**, *39* (1), 6–12.
- 733 (59) Fang, Z.; Ouyang, Z.; Zheng, H.; Wang, X.; Hu, L. Culturable Airborne Bacteria in Outdoor  
734 Environments in Beijing, China. *Microb. Ecol.* **2007**, *54* (3), 487–496.
- 735 (60) Gangamma, S. Characteristics of Airborne Bacteria in Mumbai Urban Environment. *Sci. Total*  
736 *Environ.* **2014**, *488–489* (1), 70–74.
- 737 (61) Marcus H. Y. Leung; Xinzhao Tong; Kari O. Bøifot; Daniela Bezdán; Daniel J. Butler; David C.  
738 Danko; Jostein Gohli; David C. Green; Mark T. Hernandez; Frank J. Kelly; Shawn Levy;  
739 Gabriella Mason-Buck; Marina Nieto-Caballero; Denise Syndercombe-Court; Klas.  
740 Characterization of the Public Transit Air Microbiome and Resistome Reveals Geographical  
741 Specificity. *Microbiome* **2021**, 1–19.
- 742 (62) Coleman, K. K.; Nguyen, T. T.; Yadana, S.; Hansen-Estruch, C.; Lindsley, W. G.; Gray, G. C.  
743 Bioaerosol Sampling for Respiratory Viruses in Singapore’s Mass Rapid Transit Network. *Sci.*  
744 *Rep.* **2018**, *8* (1), 17476.
- 745 (63) Brinkman, N. E.; Fout, G. S.; Keely, S. P. Retrospective Surveillance of Wastewater To Examine  
746 Seasonal Dynamics of Enterovirus Infections. *mSphere* **2017**, *2* (3), e00099-17.
- 747 (64) Green, C. F.; Gibbs, S. G.; Tarwater, P. M.; Mota, L. C.; Scarpino, P. V. Bacterial Plume  
748 Emanating from the Air Surrounding Swine Confinement Operations. *J. Occup. Environ. Hyg.*  
749 **2006**, *3* (1), 9–15.
- 750 (65) Ko, G.; Simmons III, O. D.; Likirdopulos, C. A.; Worley-Davis, L.; Williams, M.; Sobsey, M. D.  
751 Investigation of Bioaerosols Released from Swine Farms Using Conventional and Alternative  
752 Waste Treatment and Management Technologies. *Environ. Sci. Technol.* **2008**, *42* (23), 8849–  
753 8857.
- 754 (66) Pillai, S. D.; Ricke, S. C. Bioaerosols from Municipal and Animal Wastes: Background and

- 755 Contemporary Issues. *Can. J. Microbiol.* **2002**, *48* (8), 681–696.
- 756 (67) Farling, S.; Rogers, T.; Knee, J. S.; Tilley, E. A.; Brown, J.; Deshusses, M. A. Bioaerosol  
757 Emissions Associated with Pit Latrine Emptying Operations. *Sci. Total Environ.* **2019**, *648*, 1082–  
758 1086.
- 759 (68) Gao, J.-F.; Fan, X.-Y.; Li, H.-Y.; Pan, K.-L. Airborne Bacterial Communities of PM<sub>2.5</sub> in Beijing-  
760 Tianjin-Hebei, China as Revealed By Illumina MiSeq Sequencing: A Case. *AEROSOL AIR Qual.*  
761 *Res.* **2017**, *17* (3), 788–798.
- 762 (69) Bertolini, V.; Innocente, E.; Rampazzo, G.; Franzetti, A.; Gandolfi, I.; Ambrosini, R.; Bestetti, G.  
763 Temporal Variability and Effect of Environmental Variables on Airborne Bacterial Communities  
764 in an Urban Area of Northern Italy [Electronic Resource]. *Appl. Microbiol. Biotechnol.* **2013**, *97*  
765 (14), 6561–6570.
- 766 (70) Bowers, R. M.; Clements, N.; Emerson, J. B.; Wiedinmyer, C.; Hannigan, M. P.; Fierer, N.  
767 Seasonal Variability in Bacterial and Fungal Diversity of the Near-Surface Atmosphere. *Environ.*  
768 *Sci. Technol.* **2013**, *47* (21), 12097–12106.
- 769 (71) Abd Aziz, A.; Lee, K.; Park, B.; Park, H.; Park, K.; Choi, I. G.; Chang, I. S. Comparative Study of  
770 the Airborne Microbial Communities and Their Functional Composition in Fine Particulate Matter  
771 (PM<sub>2.5</sub>) under Non-Extreme and Extreme PM<sub>2.5</sub> Conditions. *Atmos. Environ.* **2018**, *194*  
772 (February), 82–92.
- 773 (72) Cao, Y.; Raith, M. R.; Griffith, J. F. Droplet Digital PCR for Simultaneous Quantification of  
774 General and Human-Associated Fecal Indicators for Water Quality Assessment. *Water Res.* **2015**,  
775 *70*, 337–349.
- 776 (73) Woo, A. C.; Brar, M. S.; Chan, Y.; Lau, M. C. Y.; Leung, F. C. C.; Scott, J. A.; Vrijmoed, L. L.  
777 P.; Zawar-Reza, P.; Pointing, S. B. Temporal Variation in Airborne Microbial Populations and  
778 Microbially-Derived Allergens in a Tropical Urban Landscape. *Atmos. Environ.* **2013**, *74*, 291–  
779 300.
- 780 (74) Van Goethem, N.; Descamps, T.; Devleeschauwer, B.; Roosens, N. H. C.; Boon, N. A. M.; Van

- 781 Oyen, H.; Robert, A. Status and Potential of Bacterial Genomics for Public Health Practice: A  
782 Scoping Review. *Implement. Sci.* **2019**, *14* (1), 1–16.
- 783 (75) GBD 2017 Causes of Death Collaborators. Global, Regional, and National Age-Sex-Specific  
784 Mortality for 282 Causes of Death in 195 Countries and Territories, 1980–2017: A Systematic  
785 Analysis for the Global Burden of Disease Study 2017. *Lancet* **2018**, *392* (10159), 1736–1788.
- 786 (76) Kumar, P. *CENSUS OF INDIA 2011 Series 10 Part XII-A District Census Handbook*; Kanpur  
787 Nagar, Uttar Pradesh, 2011.
- 788 (77) Singh, R. P. Effect of Wastewater Disposal and Extent of Industrial Pollution in and around  
789 Kanpur, Uttar Pradesh, India. *Bull. Eng. Geol. Environ.* **2001**, *60* (1), 31–35.
- 790 (78) Zia, H.; Devadas, V. Urban Solid Waste Management in Kanpur: Opportunities and Perspectives.  
791 *Habitat Int.* **2008**, *32* (1), 58–73.
- 792 (79) Poma, V.; Mamani, N.; Iñiguez, V. Impact of Urban Contamination of the La Paz River Basin on  
793 Thermotolerant Coliform Density and Occurrence of Multiple Antibiotic Resistant Enteric  
794 Pathogens in River Water, Irrigated Soil and Fresh Vegetables. *Springerplus* **2016**, *5* (1), 499.
- 795 (80) Alarcon Calderon, V. J. A Water Quality Model of the Choqueyapu River, La Paz, Bolivia. **1996**,  
796 1–24.
- 797 (81) INE. Bolivia cuenta con más de 11 millones de habitantes a 2018  
798 [https://www.ine.gob.bo/index.php/notas-de-prensa-y-monitoreo/item/3170-bolivia-cuenta-con-](https://www.ine.gob.bo/index.php/notas-de-prensa-y-monitoreo/item/3170-bolivia-cuenta-con-mas-de-11-millones-de-habitantes-a-2018)  
799 [mas-de-11-millones-de-habitantes-a-2018](https://www.ine.gob.bo/index.php/notas-de-prensa-y-monitoreo/item/3170-bolivia-cuenta-con-mas-de-11-millones-de-habitantes-a-2018) (accessed Jan 22, 2020).
- 800 (82) Ohno, A; Marui, A; Castro, ES; Reyes, AA; Elio-Calvo, D; Kasitani, H; Ishii, Y; Yamaguchi, K.  
801 Enteropathogenic Bacteria in the La Paz River of Bolivia. *Am. J. Trop. Med. Hyg.* **1997**, *57* (4),  
802 438–44.
- 803 (83) Guzman-Otazo, J.; Gonzales-Siles, L.; Poma, V.; Bengtsson-Palme, J.; Thorell, K.; Flach, C.-F.;  
804 Iñiguez, V.; Sjöling, Å. Diarrheal Bacterial Pathogens and Multi-Resistant Enterobacteria in the  
805 Choqueyapu River in La Paz, Bolivia. *PLoS One* **2019**, *14* (1), e0210735.
- 806 (84) Hollabaugh, C. L.; Harris, R. R.; Jackson, J. A. The Role of Urban Runoff, Sewage Discharge, and

- 807 Chicken Manure on the Water Quality of the Chattahoochee River. *Environ. Geosci.* **2004**, *11* (1),  
808 16–27.
- 809 (85) Aulenbach, B. T.; McKee, A. M. . *Monitoring and Real-Time Modeling of Escherichia Coli*  
810 *Bacteria for the Chattahoochee River , Chattahoochee River National Recreation Area , Georgia ,*  
811 *2000 – 2019*; Georgia, 2020.
- 812 (86) McKee, B. A.; Molina, M.; Cyterski, M.; Couch, A. Microbial Source Tracking (MST) in  
813 Chattahoochee River National Recreation Area: Seasonal and Precipitation Trends in MST Marker  
814 Concentrations, and Associations with E. Coli Levels, Pathogenic Marker Presence, and Land Use.  
815 *Water Res.* **2020**, *171*, 115435.
- 816 (87) Rose, S. The Effects of Urbanization on the Hydrochemistry of Base Flow within the  
817 Chattahoochee River Basin (Georgia, USA). *J. Hydrol.* **2007**, *341* (1–2), 42–54.
- 818 (88) Schoonover, J. E.; Lockaby, B. G. Land Cover Impacts on Stream Nutrients and Fecal Coliform in  
819 the Lower Piedmont of West Georgia. *J. Hydrol.* **2006**, *331* (3–4), 371–382.
- 820 (89) United States Census Bureau, P. D. Annual Estimates of the Resident Population for Incorporated  
821 Places of 50,000 or More, Ranked by July 1, 2019 Population: April 1, 2010 to July 1, 2019.
- 822 (90) Pam Murowchick. Summary Technical Report InnovaPrep LLC Dry Filter Collection / Wet  
823 Elution Aspiration and Recovery Efficiency Testing For□: Andrew Page , President & CTO.
- 824 (91) Hill, V.; Narayanan, J.; Gallen, R.; Ferdinand, K.; Cromeans, T.; Vinjé, J. Development of a  
825 Nucleic Acid Extraction Procedure for Simultaneous Recovery of DNA and RNA from Diverse  
826 Microbes in Water. *Pathogens* **2015**, *4* (2), 335–354.
- 827 (92) Kimble, G. H.; Hill, V. R.; Amburgey, J. E. Evaluation of Alternative DNA Extraction Processes  
828 and Real-Time PCR for Detecting *Cryptosporidium Parvum* in Drinking Water. *Water Supply*  
829 **2015**, *15* (6).
- 830 (93) Ginn, O.; Rocha-Melogno, L.; Bivins, A.; Lowry, S.; Cardelino, M.; Nichols, D.; Tripathi, S. N.;  
831 Soria, F.; Andrade, M.; Bergin, M.; Deshusses, M. A.; Brown, J. Supplementary Information to:  
832 Detection and Quantification of Enteric Pathogens in Aerosols near Open Wastewater Canals in

- 833 Cities with Poor Sanitation. *OSF* **2021**, **1**.
- 834 (94) Borchartd, M. A.; Boehm, A. B.; Salit, M.; Spencer, S. K.; Wigginton, K. R.; Noble, R. T. The  
835 Environmental Microbiology Minimum Information (EMMI) Guidelines: QPCR and DPCR  
836 Quality and Reporting for Environmental Microbiology. **2021**.
- 837 (95) Kodaka, H.; Mizuochi, S.; Teramura, H.; Nirazuka, T. Comparison of the Compact Dry EC with  
838 the Most Probably Number Method (AOAC Official Method 966.24) for Enumeration of  
839 *Escherichia Coli* and Coliform Bacteria in Raw Meats. *J. AOAC Int.* **2006**, *89* (1), 100–114.
- 840 (96) Andersen, A. A. New Sampler for the Collection, Sizing, and Enumeration of Viable Airborne  
841 Particles. *U. S. Army Chem. Corps Proving Gr.* **1958**, *76* (904), 471–484.
- 842 (97) Bain, R. E. S.; Woodall, C.; Elliott, J.; Arnold, B. F.; Tung, R.; Morley, R.; Du Preez, M.;  
843 Bartram, J. K.; Davis, A. P.; Gundry, S. W.; Pedley, S. Evaluation of an Inexpensive Growth  
844 Medium for Direct Detection of *Escherichia Coli* in Temperate and Sub-Tropical Waters. *PLoS*  
845 *One* **2015**, *10* (10), 1–13.
- 846 (98) Magro, G.; Bain, R. E. S.; Woodall, C. A.; Matthews, R. L.; Gundry, S. W.; Davis, A. P. Synthesis  
847 and Application of Resorufin  $\beta$ -D-Glucuronide, a Low-Cost Chromogenic Substrate for  
848 Detecting *Escherichia Coli* in Drinking Water. *Environ. Sci. Technol.* **2014**, *48* (16), 9624–9631.
- 849 (99) Genter, F.; Marks, S. J.; Clair-Caliot, G.; Mugume, D. S.; Johnston, R. B.; Bain, R. E. S.; Julian,  
850 T. R. Evaluation of the Novel Substrate RUG<sup>TM</sup> for the Detection of: *Escherichia Coli* in Water  
851 from Temperate (Zurich, Switzerland) and Tropical (Bushenyi, Uganda) Field Sites. *Environ. Sci.*  
852 *Water Res. Technol.* **2019**, *5* (6), 1082–1091.
- 853 (100) Team, R. C. R: A Language and environment for statistical computing.
- 854 (101) Brown, J.; Cumming, O. Stool-Based Pathogen Detection Offers Advantages as an Outcome  
855 Measure for Water, Sanitation, and Hygiene Trials. *Am. J. Trop. Med. Hyg.* **2020**, *102* (2), 260–  
856 261.
- 857 (102) Kotloff, K.; Nataro, J.; Blackwelder, W.; Nasrin, D.; Farag, T.; Panchalingam, S.; Wu, Y.; Sow,

858 S.; Sur, D.; Breiman, R.; Faruque, A.; Zaidi, A.; Saha, D.; Alonso, P.; Tamboura, B.; Sanogo, D.;

859 Onwuchekwa, U.; Manna, B.; Ramamurthy, T.; Kanungo, S.; Ochieng, J.; Omore, R.; Oundo, J.;

860 Hossain, A.; Das, S.; Ahmed, S.; Qureshi, S.; Quadri, F.; Adegbola, R.; Antonio, M.; Hossain, M.;

861 Akinsola, A.; Mandomando, I.; Nhampossa, T.; Acácio, S.; Biswas, K.; O'Reilly, C.; Mintz, E.;

862 Berkeley, L.; Muhsen, K.; Sommerfelt, H.; Robins-Browne, R.; Levine, M. Burden and Aetiology

863 of Diarrhoeal Disease in Infants and Young Children in Developing Countries (the Global Enteric

864 Multicenter Study, GEMS): A Prospective, Case-Control Study. *Lancet* **2013**, 382 (9888), 209–

865 222.

866 (103) Capone, D.; Chigwechokha, P.; de los Reyes, F. L.; Holm, R. H.; Risk, B. B.; Tilley, E.; Brown, J.

867 Impact of Sampling Depth on Pathogen Detection in Pit Latrines. *PLoS Negl. Trop. Dis.* **2021**, 15

868 (3), 1–13.

869 (104) Bustin, S. A.; Benes, V.; Garson, J. A.; Hellemans, J.; Huggett, J.; Kubista, M.; Mueller, R.;

870 Nolan, T.; Pfaffl, M. W.; Shipley, G. L.; Vandesompele, J.; Wittwer, C. T.. The MIQE Guidelines:

871 Minimum Information for Publication of Quantitative Real-Time PCR Experiments. *Clin. Chem.*

872 **2009**, 55 (4), 611–622.

873 (105) Petri, W. A.; Miller, M.; Binder, H. J.; Levine, M. M.; Dillingham, R.; Guerrant, R. L. Enteric

874 Infections, Diarrhea, and Their Impact On Function and Development. *J. Clin. Invest.* **2008**, 118

875 (4), 1277-90.

876 (106) Levine, M.; Nasrin, D.; Acácio, S.; Bassat, Q.; Powell, H.; Tennant, S.; Sow, S.; Sur, D.; Zaidi,

877 A.; Faruque, A.; Hossain, M.; Alonso, P.; Breiman, R.; O'Reilly, C.; Mintz, E.; Omore, R.;

878 Ochieng, J.; Oundo, J.; Tamboura, B.; Sanogo, D.; Onwuchekwa, U.; Manna, B.; Ramamurthy, T.;

879 Kanungo, S.; Ahmed, S.; Qureshi, S.; Quadri, F.; Hossain, A.; Das, S.; Antonio, M.; Saha, D.;

880 Mandomando, I.; Blackwelder, W.; Farag, T.; Wu, Y.; Houpt, E.; Verweij, J.; Sommerfelt, H.;

881 Nataro, J.; Robins-Browne, R.; Kotloff, K. Diarrhoeal Disease and Subsequent Risk of Death in

882 Infants and Children Residing in Low-Income and Middle-Income Countries: Analysis of the

- 883 GEMS Case-Control Study and 12-Month GEMS-1A Follow-on Study. *Lancet Glob. Heal.* **2020**,  
884 8 (2), e204–e214.
- 885 (107) Chopra, R. D.; Dworkin, M. S. Descriptive Epidemiology of Enteric Disease in Chennai, India.  
886 *Epidemiol. Infect.* **2013**, *141* (5), 953–957.
- 887 (108) Eng, S. K.; Pusparajah, P.; Ab Mutalib, N. S.; Ser, H. L.; Chan, K. G.; Lee, L. H. Salmonella: A  
888 Review on Pathogenesis, Epidemiology and Antibiotic Resistance. *Front. Life Sci.* **2015**, *8* (3),  
889 284–293.
- 890 (109) Knight, A.; Haines, J.; Stals, A.; Li, D.; Uyttendaele, M.; Knight, A.; Jaykus, L. A. A Systematic  
891 Review of Human Norovirus Survival Reveals a Greater Persistence of Human Norovirus RT-  
892 QPCR Signals Compared to Those of Cultivable Surrogate Viruses. *Int. J. Food Microbiol.* **2016**,  
893 *216*, 40–49.
- 894 (110) Stokdyk, J. P.; Furstahl, A. D.; Spencer, S. K.; Burch, T. R.; Borchardt, M. A. Determining the  
895 95% Limit of Detection for Waterborne Pathogen Analyses from Primary Concentration to QPCR.  
896 *Water Res.* **2016**, *96*, 105–113.
- 897 (111) Huggett, J. F.; Foy, C. A.; Benes, V.; Emslie, K.; Garson, J. A.; Haynes, R.; Hellemans, J.;  
898 Kubista, M.; Mueller, R. D.; Nolan, T.; Pfaffl, M.; Shipley, G.; Vandesompele, J.; Wittwer, C.;  
899 Bustin, S.. The Digital MIQE Guidelines: Minimum Information for Publication of Quantitative  
900 Digital PCR Experiments. *Clin. Chem.* **2013**, *59* (6), 892–902.
- 901 (112) Seinfeld, J.; Pandis, S. *Atmospheric Chemistry and Physics: From Air Pollution to Climate*  
902 *Change*, 3rd ed.; Wiley: New Jersey, 2016.
- 903 (113) Health and Ecological; Criteria Division, Office of Science and Technology, U. S. (U. S. . E.;  
904 (EPA), P. A. *Recreational Water Quality Criteria*; 2012.
- 905 (114) Lawrence, S. J. Escherichia Coli Bacteria Density in Relation to Turbidity, Streamflow  
906 Characteristics, and Season in the Chattahoochee River near Atlanta, Georgia, October 2000  
907 through September 2008 — Description, Statistical Analysis, and Predictive Modeling. **2012**, No.  
908 September 2008, 81.

- 909 (115) Collaborators, G. 2016 D. D. Estimates of the Global, Regional, and National Morbidity,  
910 Mortality, and Aetiologies of Diarrhoea in 195 Countries: A Systematic Analysis for the Global  
911 Burden of Disease Study 2016. *Lancet Infect. Dis.* **2018**, *18* (11), 1211–1228.
- 912 (116) Jahne, M. A.; Rogers, S. W.; Holsen, T. M.; Grimberg, S. J. Quantitative Microbial Risk  
913 Assessment of Bioaerosols from a Manure Application Site. *Aerobiologia (Bologna)*. **2015**, *31* (1),  
914 73–87.
- 915 (117) Jahne, M. A.; Rogers, S. W.; Holsen, T. M.; Grimberg, S. J.; Ramler, I. P. Emission and  
916 Dispersion of Bioaerosols from Dairy Manure Application Sites: Human Health Risk Assessment.  
917 *Environ. Sci. Technol.* **2015**, *49* (16), 9842–9849.
- 918 (118) Igbiosa, I. H.; Igumbor, E. U.; Aghdasi, F.; Tom, M.; Okoh, A. I. Emerging Aeromonas Species  
919 Infections and Their Significance in Public Health. *Sci. World J.* **2012**, 2012.
- 920 (119) Fernández-Bravo, A.; Figueras, M. J. An Update on the Genus Aeromonas: Taxonomy,  
921 Epidemiology, and Pathogenicity, *Microorganisms*, 2020; Vol. 8 (1), 129..
- 922 (120) Seitz, S. R.; Leon, J. S.; Schwab, K. J.; Lyon, G. M.; Dowd, M.; McDaniels, M.; Abdulhafid, G.;  
923 Fernandez, M. L.; Lindesmith, L. C.; Baric, R. S.; Moe, C. Norovirus Infectivity in Humans and  
924 Persistence in Water. *Appl. Environ. Microbiol.* **2011**, *77* (19), 6884–6888.
- 925 (121) Cheesbrough, J. S.; Barkess-Jones, L.; Brown, D. W. Possible Prolonged Environmental Survival  
926 of Small Round Structured Viruses. *J. Hosp. Infect.* **1997**, *35* (4), 325–326.
- 927 (122) Marks, P. J.; Vipond, I. B.; Regan, F. M.; Wedgwood, K.; Fey, R. E.; Caul, E. O. A School  
928 Outbreak of Norwalk-like Virus: Evidence for Airborne Transmission. *Epidemiol. Infect.* **2003**,  
929 *131* (1), 727–736.
- 930 (123) Marks, P. J.; Vipond, I. B.; Carlisle, D.; Deakin, D.; Fey, R. E.; Caul, E. O. Evidence for Airborne  
931 Transmission of Norwalk-like Virus (NLV) in a Hotel Restaurant. *Epidemiol. Infect.* **2000**, *124*  
932 (3), 481–487.
- 933 (124) O'Neill, P. D.; Marks, P. J. Bayesian Model Choice and Infection Route Modelling in an Outbreak  
934 of Norovirus. *Stat. Med.* **2005**, *24* (13), 2011–2024.



- 935 (125) Alsvéd, M.; Widell, A.; Dahlin, H.; Karlson, S.; Medstrand, P.; Löndahl, J. Aerosolization and  
936 Recovery of Viable Murine Norovirus in an Experimental Setup. *Sci. Rep.* **2020**, *10* (1), 1–10.
- 937 (126) Tung-Thompson, G.; Libera, D. A.; Koch, K. L.; De Los Reyes, F. L.; Jaykus, L. A.  
938 Aerosolization of a Human Norovirus Surrogate, Bacteriophage MS2, during Simulated Vomiting.  
939 *PLoS One* **2015**, *10* (8), 1–13.
- 940 (127) Teunis, P.; Moe, C. L.; Liu, P.; Miller, S. E.; Lindesmith, L.; Baric, R. S.; Le Pendu, J.; Calderon,  
941 R. L. Norwalk Virus: How Infectious Is It? *J. Med. Virol.* **2008**, *80*, 1468–1476.
- 942 (128) Lopman, B.; Atmar, R.; Baric, R.; Estes, M.; Green, K.; Glass, R.; Hall, A.; Iturriza-Gomara, M.;  
943 Kang, C.; Lee, B.; Parashar, U.; Riddle, M.; Vinje, J. Global Burden of Norovirus and Prospects  
944 for Vaccine Development Table of Contents. **2015**.
- 945 (129) Ahmed, S. M.; Hall, A. J.; Robinson, A. E.; Verhoef, L.; Premkumar, P.; Parashar, U. D.;  
946 Koopmans, M.; Lopman, B. A. Global Prevalence of Norovirus in Cases of Gastroenteritis: A  
947 Systematic Review and Meta-Analysis. *Lancet Infect. Dis.* **2014**, *14* (8), 725–730.
- 948 (130) Balderrama-Carmona, A. P.; Gortáres-Moroyoqui, P.; Álvarez-Valencia, L. H.; Castro-Espinoza,  
949 L.; Mondaca-Fernández, I.; Balderas-Cortés, J. de J.; Chaidez-Quiroz, C.; Meza-Montenegro, M.  
950 M. Occurrence and Quantitative Microbial Risk Assessment of Cryptosporidium and Giardia in  
951 Soil and Air Samples. *Int. J. Infect. Dis.* **2014**, *26*, 123–127.
- 952 (131) Checkley, W.; Jr, A. C. W.; Jaganath, D.; Arrowood, M. J.; Rachel, M.; Chen, X.; Fayer, R.;  
953 Griffiths, J. K.; Guerrant, R. L.; Huston, C. D.; Kotloff, K.; Kang, G.; Mead, J.; Petri, W.; Priest,  
954 J.; Roos, D.; Striepen, B.; Thompson, R.; Ward, H.; Van Voorhis, W.; Xiao, L.; Zhu, G.; Houpt, E.  
955 Review of the Global Burden, Novel Diagnostics, Therapeutics, and Vaccine Targets for  
956 Cryptosporidium. *Lancet Infect. Dis.* **2015**, *15* (1), 85–94.
- 957 (132) Rocha-Melogno, L.; Ginn, O.; Bailey, E. S.; Soria, F.; Andrade, M.; Bergin, M. H.; Brown, J.;  
958 Gray, G. C.; Deshusses, M. A. Bioaerosol Sampling Optimization for Community Exposure  
959 Assessment in Cities with Poor Sanitation: A One Health Cross-Sectional Study. *Sci. Total*  
960 *Environ.* **2020**, *738*, 139495.

- 961 (133) Salazar, D.; Ginn, O.; Brown, J.; Soria, F.; Garvizu, C. Assessment of Antibiotic Resistant  
962 Coliforms from Bioaerosol Samples Collected above a Sewage-Polluted River in La Paz, Bolivia.  
963 *Int. J. Hyg. Environ. Health* **2020**, 228 (November 2019), 113494.
- 964 (134) Medina, C.; Ginn, O.; Brown, J.; Soria, F.; Garvizu, C.; Salazar, D.; Tancara, A.; Herrera, J.  
965 Detection and Assessment of the Antibiotic Resistance of Enterobacteriaceae Recovered from  
966 Bioaerosols in the Choqueyapu River Area, La Paz – Bolivia. *Sci. Total Environ.* **2020**, No. xxxx,  
967 143340.
- 968 (135) Rendon, R. V. C.; Garcia, B. C. B.; Vital, P. G. Assessment of Airborne Bacteria in Selected  
969 Occupational Environments in Quezon City, Philippines. *Arch. Environ. Occup. Heal.* **2017**, 72  
970 (3), 178–183.
- 971 (136) Haas, C. N. Quantitative Microbial Risk Assessment and Molecular Biology: Paths to Integration.  
972 *Environ. Sci. Technol.* **2020**, 54 (14), 8539–8546.
- 973 (137) Odonkor, S. T.; Ampofo, J. K. Escherichia Coli as an Indicator of Bacteriological Quality of  
974 Water: An Overview. *Microbiol. Res. (Pavia)*. **2013**, 4 (1), 2.
- 975 (138) Bagley, S. T.; Auer, M. T.; Stern, D. A.; Babiera, M. J. Sources and Fate of Giardia Cysts and  
976 Cryptosporidium Oocysts in Surface Waters. *Lake Reserv. Manag.* **1998**, 14 (2–3), 379–392.
- 977 (139) Lemarchand, K.; Lebaron, P. Occurrence of Salmonella Spp. and Cryptosporidium Spp. in a  
978 French Coastal Watershed: Relationship with Fecal Indicators. *FEMS Microbiol. Lett.* **2003**, 218  
979 (1), 203–209.
- 980 (140) Duchaine, C. Assessing Microbial Decontamination of Indoor Air with Particular Focus on  
981 Human Pathogenic Viruses. *Am. J. Infect. Control* **2016**, 44 (9), S121–S126.
- 982 (141) Haig, C. W.; Mackay, W. G.; Walker, J. T.; Williams, C. Bioaerosol Sampling: Sampling  
983 Mechanisms, Bioefficiency and Field Studies. *J. Hosp. Infect.* **2016**, 93 (3), 242–255.
- 984 (142) Pan, M.; Lednicky, J. A.; Wu, C. Y. Collection, Particle Sizing and Detection of Airborne Viruses.  
985 *J. Appl. Microbiol.* **2019**, 127 (6), 1596–1611.
- 986 (143) Flagan, R. C.; Seinfeld, J. H. *Fundamentals of Air Pollution Engineering*; Prentice-Hall, Inc.:

- 987 Englewood Cliffs, New Jersey, 1988.
- 988 (144) Nyangulu, W.; Van Voorhis, W.; Iroh Tam, P. Y. Evaluating Respiratory Cryptosporidiosis in  
989 Pediatric Diarrheal Disease: Protocol for a Prospective, Observational Study in Malawi. *BMC*  
990 *Infect. Dis.* **2019**, *19* (1), 1–8.
- 991 (145) Sponseller, J. K.; Griffiths, J. K.; Tzipori, S. The Evolution of Respiratory Cryptosporidiosis:  
992 Evidence for Transmission by Inhalation. *Clin. Microbiol. Rev.* **2014**, *27* (3), 575–586.
- 993 (146) Uhnou, I.; Wadell, G.; Svensson, L.; Johansson, M. E. Importance of Enteric Adenoviruses 40 and  
994 41 in Acute Gastroenteritis in Infants and Young Children. *J. Clin. Microbiol.* **1984**, *20* (3), 365–  
995 372.
- 996 (147) Contreras, J. D.; Trangucci, R.; Felix-Arellano, E. E.; Rodríguez-Dozal, S.; Siebe, C.; Riojas-  
997 Rodríguez, H.; Meza, R.; Zelner, J.; Eisenberg, J. N. S. Modeling Spatial Risk of Diarrheal  
998 Disease Associated with Household Proximity to Untreated Wastewater Used for Irrigation in the  
999 Mezquital Valley, Mexico. *Environ. Health Perspect.* **2020**, *128* (7), 1–9.
- 1000 (148) Kouimtzi, M.; Pinney, R. J.; Newton, J. M. Survival of Bacteria during Extrusion-Spheronization.  
1001 *Pharm. Sci.* **1997**, *3* (7), 347–351.
- 1002 (149) Yoo, K.; Lee, T. K.; Choi, E. J.; Yang, J.; Shukla, S. K.; Hwang, S. il; Park, J. Molecular  
1003 Approaches for the Detection and Monitoring of Microbial Communities in Bioaerosols: A  
1004 Review. *J. Environ. Sci. (China)* **2017**, *51*, 234–247.
- 1005 (150) Alburty Lab. *Dry Filter Collection / Wet Elution Aspiration and Recovery Efficiency Testing*;  
1006 2013.
- 1007 (151) Thye, Y. P.; Templeton, M. R.; Ali, M. A Critical Review of Technologies for Pit Latrine  
1008 Emptying in Developing Countries. *Crit. Rev. Environ. Sci. Technol.* **2011**, *41* (20), 1793–1819.
- 1009 (152) Pagalilauan, H. A. M.; Paraoan, C. E. M.; Vital, P. G. Detection of Pathogenic Bioaerosols and  
1010 Occupational Risk in a Philippine Landfill Site. *Arch. Environ. Occup. Heal.* **2018**, *73* (2), 107–  
1011 114.
- 1012 (153) Yu, Y.; Yu, Z.; Sun, P.; Lin, B.; Li, L.; Wang, Z.; Ma, R.; Xiang, M.; Li, H.; Guo, S. Effects of

- 1013 Ambient Air Pollution from Municipal Solid Waste Landfill on Children's Non-Specific Immunity  
1014 and Respiratory Health. *Environ. Pollut.* **2018**, 236, 382–390.
- 1015 (154) Bøifot, K. O.; Gohli, J.; Skogan, G.; Dybwad, M. Performance Evaluation of High-Volume  
1016 Electret Filter Air Samplers in Aerosol Microbiome Research. *Environ. Microbiomes* **2020**, 15 (1),  
1017 1–16.
- 1018 (155) Brown, J.; Cairncross, S.; Ensink, J. H. J. Water, Sanitation, Hygiene and Enteric Infections in  
1019 Children. *Arch. Dis. Child.* **2013**, 98 (8), 629–634.
- 1020 (156) Penakalapati, G.; Swarthout, J.; Delahoy, M. J.; McAliley, L.; Wodnik, B.; Levy, K.; Freeman, M.  
1021 C. Exposure to Animal Feces and Human Health: A Systematic Review and Proposed Research  
1022 Priorities. *Environ. Sci. Technol.* **2017**, 51 (20), 11537–11552.
- 1023 (157) Robb, K.; Null, C.; Teunis, P.; Yakubu, H.; Armah, G.; Moe, C. L. Assessment of Fecal Exposure  
1024 Pathways in Low-Income Urban Neighborhoods in Accra, Ghana: Rationale, Design, Methods,  
1025 and Key Findings of the Sanipath Study. *Am. J. Trop. Med. Hyg.* **2017**, 97 (4), 1020–1032.  
1026