

# Early life predictors of late life cerebral small vessel disease in four prospective cohort studies

Ellen V Backhouse<sup>1,2</sup>, Susan D Shenkin<sup>3</sup>, Andrew M McIntosh<sup>4</sup>, Mark E Bastin<sup>1,5,6</sup>, Heather C Whalley<sup>1,4</sup>, Maria Valdez Hernandez<sup>1,5,6</sup>, Susana Muñoz Maniega<sup>1,5,6</sup>, Mat Harris<sup>4</sup>, Aleks Stolicyn<sup>4</sup>, Archie Campbell<sup>4</sup>, Douglas Steele<sup>7</sup>, Gordon D Waiter<sup>8</sup>, Anca-Larisa Sandu<sup>8</sup>, Jennifer MJ Waymont<sup>5,8</sup>, Alison D Murray<sup>8</sup>, Simon R Cox<sup>9</sup>, Susanne R. de Rooij<sup>10</sup>, Tessa J. Roseboom<sup>10</sup>, Joanna M Wardlaw<sup>1,2,5,6</sup>

<sup>1</sup> Centre for Clinical Brain Sciences, University of Edinburgh, Chancellor's Building, 49 Little France Crescent, Edinburgh, UK, EH16 4SB

<sup>2</sup>MRC UK Dementia Research Institute at the University of Edinburgh

<sup>3</sup>Geriatric Medicine, Usher Institute, The University of Edinburgh, 51 Little France Crescent, Edinburgh, EH16 4SB.

<sup>4</sup>Division of Psychiatry, Royal Edinburgh Hospital, University of Edinburgh, Edinburgh, UK, EH10 5HF

<sup>5</sup>Scottish Imaging Network, A Platform for Scientific Excellence (SINAPSE)

<sup>6</sup>Brain Research Imaging Centre, Division of Neuroimaging Sciences, Centre for Clinical Brain Sciences, University of Edinburgh, UK

<sup>7</sup>Division of Imaging Sciences and Technology, Medical School, University of Dundee, UK, DD19SY

<sup>8</sup>Aberdeen Biomedical Imaging Centre, School of Medicine, Medical Sciences and Nutrition, University of Aberdeen, Foresterhill, Aberdeen AB252ZD

<sup>9</sup>Lothian Birth Cohorts Group, Department of Psychology, University of Edinburgh, Edinburgh, UK

<sup>10</sup>Department of Epidemiology and Data Science, Amsterdam University, Medical Centres, University of Amsterdam, The Netherlands

## Abstract

Development of cerebral small vessel disease, a major cause of stroke and dementia, may be influenced by early life factors. It is unclear whether these relationships are independent of each other, of adult socioeconomic status or of vascular risk factor exposures.

We examined associations between factors from birth (ponderal index, birth weight), childhood (IQ, education, socioeconomic status), adult small vessel disease, and brain volumes, using data from four prospective cohort studies: STRatifying Resilience And Depression Longitudinally (STRADL) ( $n=1080$ ; mean age=59 years); The Dutch Famine Birth cohort ( $n=118$ ; mean age=68 years); the Lothian Birth Cohort 1936 (LBC1936;  $n=617$ ; mean age=73 years), and the Simpson's cohort ( $n=110$ ; mean age=78 years). We analysed each small vessel disease feature individually and summed to give a total small vessel disease score (range 1-4) in each cohort separately, then in meta-analysis, adjusted for vascular risk factors and adult socioeconomic status.

Higher birth weight was associated with fewer lacunes ( $OR$  per 100g, 0.93 95% $CI=0.88-0.99$ ), fewer infarcts ( $OR=0.94$  95% $CI=0.89-0.99$ ), and fewer perivascular spaces ( $OR=0.95$  95% $CI=0.91-0.99$ ). Higher childhood IQ was associated with lower white matter hyperintensity burden ( $OR$  per IQ point=0.99 95% $CI$  0.98-0.998), fewer infarcts ( $OR=0.98$ , 95% $CI=0.97-0.998$ ), fewer lacunes ( $OR=0.98$ , 95% $CI=0.97-0.999$ ), and lower total small vessel disease burden ( $OR=0.98$ , 95% $CI=0.96-0.999$ ). Low education was associated with more microbleeds ( $OR=1.90$  95% $CI=1.33-2.72$ ) and lower total brain volume ( $MD=-178.86\text{cm}^3$ , 95% $CI=-325.07- -32.66$ ). Low childhood socioeconomic status was associated with fewer lacunes ( $OR=0.62$ , 95% $CI=0.40-0.95$ ).

Early life factors are associated with worse small vessel disease in later life, independent of each other, vascular risk factors and adult socioeconomic status. Risk for small vessel disease may originate in early life and provide a mechanistic link between early life factors and risk of stroke and dementia. Policies investing in early child development may contribute to improve lifelong brain health to prevent dementia and stroke in older age.

**Correspondence to:** Prof Joanna M. Wardlaw

Centre for Clinical Brain Sciences, University of Edinburgh, The Chancellors Building, 49 Little France Crescent, Edinburgh, EH16 4SB Email: [joanna.wardlaw@ed.ac.uk](mailto:joanna.wardlaw@ed.ac.uk) Tel: 0131 537 2943

**Running title:** Early life risk factors for SVD

**Keywords:** cerebral small vessel disease, education, childhood, MRI, epidemiology

**Abbreviations:** ACDS= Aberdeen Child Development Survey; ACONF= Aberdeen Children of the 1950s cohort; DOHAD= Developmental Origins of Adult Health and Disease; GS:SFHS= Generation Scotland: Scottish Family Health Study; ICV= intracranial volume; LBC1936= the Lothian Birth Cohort 1936; LGA= Lesion Growth Algorithm; PVS= perivascular spaces; SES= socioeconomic status; STRADL= STRatifying Resilience and Depression Longitudinally; SVD= cerebral small vessel disease; WMH= white matter hyperintensities.

## Introduction

Cerebral small vessel disease (SVD) is common at older ages<sup>1</sup> and causes 20-25% of strokes and up to 45% of dementias, either as vascular or mixed with Alzheimer's disease.<sup>2</sup> It is responsible for up to a fifth of all strokes, doubles the risk of future stroke and worsens post-stroke recovery.<sup>3</sup> SVD is detected on neuroimaging or post mortem<sup>4</sup> as white matter hyperintensities (WMH), lacunes, microbleeds, perivascular spaces (PVS), acute lacunar infarcts and brain atrophy.<sup>4,5</sup> Several demographic and clinical factors are associated with increased risk of SVD, including adult socioeconomic status (SES), hypertension and smoking.<sup>6,7</sup> However, a large proportion of the variance in the presence and severity of SVD is unexplained by vascular risk factors<sup>7</sup> and factors from earlier in life may also be important.<sup>8</sup>

The Developmental Origins of Adult Health and Disease (DOHAD) hypothesis<sup>9</sup> proposes that adverse environmental exposures occurring during gestation can cause permanent changes in fetal development resulting in increased vulnerability to chronic diseases in adulthood. Factors affecting foetal growth such as stress and poor nutrition<sup>10,11</sup> are often hard to measure but anthropometric measures such as birth weight and ponderal index (birth weight/birth length<sup>3</sup>) can be used as proxy measures.<sup>12</sup> Additional confounding or mediating factors in childhood may also affect later disease risk.<sup>13</sup> A recent meta-analysis<sup>14</sup> found that lower levels of childhood IQ, poorer childhood SES, and less education increased the risk of SVD in later life by approximately 17-39%. However, it is not clear if these relationships are independent of each other, or if they persist after adjustment for vascular risk factors and adult SES. Few studies have examined the effect of these early life factors in combination and many rely on childhood measures assessed retrospectively in adulthood so may be subject to recall bias.

We examined the relationships between birth and childhood factors and total and individual components of SVD and brain volumes, after adjustment for each other and common adult risk factors, in four well-phenotyped prospective cohort studies: STRatifying Resilience and Depression Longitudinally (STRADL),<sup>15</sup> the Dutch Famine Birth Cohort,<sup>16</sup> the Lothian Birth Cohort 1936 (LBC1936),<sup>17</sup> and the Simpson's cohort.<sup>18</sup> All had information on education and SES, and three cohorts had IQ measured during childhood. All underwent brain imaging between the ages of 59 and 85 years. We hypothesised that low birth weight, low childhood

IQ, low education and low childhood SES would be associated with increased SVD, independent of each other, vascular risk factors and adult SES.

## **Materials and methods**

### **Participants**

The recruitment procedures and inclusion criteria for STRADL,<sup>15</sup> the Dutch Famine Birth Cohort,<sup>16</sup> the LBC1936,<sup>17</sup> and the Simpson's cohort<sup>18</sup> have been described previously in detail (see Supplementary Fig. 1a-d for recruitment flow charts). All subjects were community dwelling.

#### **STRADL**

STRADL is a population based study of 1,198 adults recruited from the Generation Scotland: Scottish Family Health Study (GS:SFHS) and two Scottish longitudinal birth cohorts, the Aberdeen Children of the 1950s (ACONF) cohort<sup>19</sup> and the Walker cohort.<sup>20</sup> ACONF consists of surviving participants of the Aberdeen Child Development Survey (ACDS), a population based study of schoolchildren in Aberdeen, conducted in 1962-64. The Walker cohort is a database of over 48,000 birth records of babies born in hospital in Dundee, between 1952 and 1966. In 2015 eligible participants were sent postal questionnaires and between 2015 and 2019 1,188 attended in person assessments. MRI and childhood data were available for 1080 participants (ACONF 268; Walker 201; GS:SFHS 611) (40% female; mean age= 59.3 years, *SD*=10.1).

#### **The Dutch Famine Birth cohort**

The Dutch Famine Birth Cohort consists of 2,414 individuals born in the Wilhelmina Gasthuis hospital in Amsterdam between 1<sup>st</sup> November 1943 and 28<sup>th</sup> February 1947, a proportion of whom were exposed to the Dutch famine of 1944-1945 in utero. 151 surviving cohort members were recruited for an MRI study in 2012 of which 118 had MRI and childhood data (56% female; mean age=67.5 years, *SD*=0.9).

#### **The Lothian Birth cohort 1936 (LBC1936)**

The LBC1936 consists of 1,091 community dwelling adults born in 1936 and living in the Lothian area of Scotland. All are surviving participants of the Scottish Mental Health Survey 1947 which was a cognitive ability test administered to all age 11 school children in Scotland

in 1947. Between 2007 and 2009 680 of the original 1091 cohort members underwent MRI, all with childhood data (47% female; mean age 72.7 years,  $SD=0.7$ ).

### **The Simpson's Cohort**

The Simpson's cohort consists of 130 individuals born 1921-1926 in three Edinburgh hospitals. In 2000 28 people were recruited as part of the Lothian Birth Cohort 1921, 19 were traced through hospital records from 1921 and 80 people were recruited through local advertisements. MRI and childhood data were available for 110 people (67% female, mean age= 78.4 years,  $SD=1.5$ ).

Participants in all cohorts provided written informed consent and research was approved by Local or Multicentre Research Ethics Committees. (STRADL:14/SS/0039; LBC1936: MREC/01/0/56 and LREC/2003/2/29; Simpson's cohort LREC 1702/1998/4/183–Amendment).

### **Early life factors**

The early life data available varied between cohorts (Fig. 1). Where possible, data were harmonised to allow direct comparison between the studies. We examined birth weight in grams (all cohorts) and ponderal index (birth weight/birth length<sup>3</sup>) (Dutch Famine Birth Cohort, LBC1936 and Simpson's cohort). In childhood, we examined: childhood IQ (STRADL, LBC1936 and Simpson's cohort) measured using raw test scores adjusted for age at testing and placed on an IQ scale; education (all cohorts) dichotomised at compulsory education (STRADL), lower secondary (Dutch Famine cohort) and 11 years (LBC1936 and Simpson's cohort); and childhood SES (all cohorts) classified according to parental occupation (manual and non-manual). Further details are provided in Supplementary Table 1.

### **MRI acquisition and analysis**

Brain imaging acquisition for STRADL,<sup>21</sup> the Dutch Famine birth cohort,<sup>22</sup> LBC1936<sup>23</sup> and the Simpson's cohort<sup>24</sup> have been described previously. Participants were scanned on a Philips Achieva 3.0T TX (STRADL, Aberdeen), Siemens 3T Prisma-FIT (STRADL Dundee), a 3T Philips Ingenia (Best, the Netherlands) with a 16-channel DStream Head-Spin coil (Dutch Famine cohort), or the same 1.5T GE Signa scanner operating in research mode

in its original LX format (Simpson's cohort) or following an upgrade to HDx format (LBC1936) (Supplementary Table 2).

## **SVD visual ratings**

Trained researchers using the same rating methods and, blind to all other data, performed all image analyses. An experienced certified and registered neuroradiologist (JMW) crosschecked 20% of scans. Presence of WMH, lacunes, micro-bleeds and perivascular spaces were rated according to STRIVE criteria and established protocols, published previously using validated visual scales,<sup>23,25,26</sup> converted to dichotomous point scores and summed to create the total SVD score (0-4; higher score represents higher SVD burden).<sup>6,27-29</sup> We noted any imaging evidence of infarcts in the cortical or subcortical regions using a validated stroke lesion rating scale.<sup>30</sup> Superficial and deep atrophy scores were coded separately using a valid template,<sup>31</sup> summed to give a total score and dichotomised into 'none or mild' and 'moderate or severe'.

## **WMH volumes and whole brain volume**

We conducted structural image analysis, blind to all non-imaging data, including measurements of volumes of the intracranial compartment (ICV), whole brain and total WMH volume in STRADL, LBC1936 and the Simpson's cohort and WMH volume only in the Dutch Famine Birth cohort. For tissue segmentation we used the processing protocol with the Lesion Growth Algorithm (LGA), provided by the Lesion Segmentation Toolbox for SPM (STRADL) and a semiautomatic segmentation tool MCMxxxVI previously validated<sup>32</sup> (LBC1936 and Simpson's cohort). We visually inspected all segmented images and manually edited any incorrectly classified tissues. Analyses were performed using Freesurfer 5.3 and Analyze<sup>TM</sup> software.

## **Statistical analysis**

We assessed descriptive characteristics using means, standard deviations (SD), medians and interquartile range (IQR), counts and percentages as appropriate. We used  $\chi^2$  for categorical data and Mann-Whitney U-Test for continuous data to compare differences between participants who underwent MRI and those who did not and to examine gender differences in SVD burden.

Few in the cohorts had the highest SVD scores, which likely reflects the generally good health of the cohorts. We therefore dichotomised the SVD score into 0-1 (“no or mild disease”) and 2-4 (“moderate-severe disease”).

We performed logistic regression for differences in early life factors for higher vs lower SVD scores and for presence of each individual SVD component and linear regression analysis to assess early life factors and brain volumes. Brain volumes were adjusted for intracranial volume (ICV). For all main analyses we analysed the cohorts individually and meta-analysed them using a random effects model in Review Manager 5.3. Due to the small sample size for some analyses we did not adjust for all available vascular risk factors. Based on previous research<sup>6,7</sup> we included age, sex, hypertension, smoking behaviour and adult SES at the time of the MRI (manual vs non-manual occupation) as covariates in all models. We adjusted analyses including birth weight and ponderal index for gestational age taken from birth records. We performed further multiple regression analyses adjusting for the other early life factors and where sample size allowed, using an event per variable of 10, vascular risk factors and SES in adulthood. A Bonferroni correction for multiple testing was not appropriate, as the variables are not independent. Therefore to mitigate the problem of multiple testing, we defined our hypotheses a priori based on our previous meta-analysis.<sup>33</sup>

All analyses were performed using SPSS version 24 (IBM Corp., Armonk, NY) using pairwise deletion to deal with missing data.

## **Data availability**

The data that support the findings of this study are available upon reasonable request.

## **Results**

Demographic and key characteristics of all participants are displayed in Table 1A-C.

Differences in demographic and key characteristics between those who underwent MRI and those who did not are provided in the Supplementary materials and Supplementary Tables 3-6, along with comparisons between the participants in this study and previous waves of each. Where data were available in comparable format, we have also provided key characteristics of the wider Scottish and Dutch population in Supplementary Tables 3-6.

Gender differences were observed in some markers of SVD. Moderate to severe SVD and WMH burden were more common in females compared to males in the LBC1936 (SVD:



22.4% vs 15.9%,  $\chi^2(1)= 4.7$ ,  $p=0.03$ ; WMH: 26.5% vs 18.8%; ( $\chi^2(1)= 5.8$ ,  $p=0.02$ ) and Dutch famine birth cohort (SVD: 31.3% vs 14.0%,  $\chi^2(1)= 4.6$ ,  $p=0.03$ ). Atrophy was more common in males compared to females in STRADL (11.2% vs 3.1%,  $\chi^2(1)=28.0$ ,  $p<0.001$ ), the LBC1936 (60.7% vs 40.7%,  $\chi^2(1)= 27.1$ ,  $p<0.001$ ) and Simpson's cohort (36.4% vs 18.2%,  $\chi^2(1)= 4.2$ ,  $p=0.04$ ). No other gender differences were observed in SVD burden.

Results from our main analyses are given below. Analysis of ponderal index are detailed in the Supplementary materials and Supplementary Fig. 2..

## Birth weight

Across all four cohorts, each increase in birth weight of 100g was associated with fewer lacunes ( $OR=0.93$  95% $CI=0.88-0.99$ ), fewer infarcts ( $OR=0.94$  95% $CI=0.89-0.99$ ) and decreased moderate-severe PVS ( $OR=0.95$  95% $CI=0.91-0.99$ , Fig. 2A) independent of age, sex, hypertension, smoking behaviour and adult SES. Results for the remaining lesions were in the expected direction (increasing birth weight and lower risk of SVD features) but did not reach significance.

Associations were attenuated but remained significant after additional adjustment for education and childhood SES (lacunes  $OR=0.94$ , 95% $CI=0.89-0.99$ ; infarcts  $OR=0.94$  95% $CI=0.89-1.00$ ; PVS  $OR=0.95$  95% $CI=0.91-0.99$ , Supplementary Table 7).

Increasing birth weight was not associated with WMH volume or brain volume in the Dutch Famine Birth cohort, LBC1936 or Simpson's cohort (Supplementary Table 8).

## Childhood IQ

Across STRADL, LBC1936, Simpson's, each point increase in IQ assessed in childhood was associated with decreased risk of moderate or severe WMH ( $OR$  per point increase 0.99 95% $CI=0.98-1.00$ ), lacunes ( $OR=0.98$  95% $CI=0.97-0.99$ ), infarcts ( $OR=0.98$  95% $CI=0.97-1.00$ ), and total SVD burden ( $OR=0.98$  95% $CI=0.96-1.00$ , Fig. 2B) independent of age, sex, hypertension, smoking behaviour and adult SES.

Additional adjustment for education and childhood SES attenuated all associations between childhood IQ and individual SVD features (Supplementary Table 9), but the associations with total SVD burden ( $OR=0.98$ , 95% $CI=0.97-0.997$ ) and infarcts ( $OR=0.98$ , 95% $CI=0.97-1.00$ , Supplementary Table 9) remained.

## Education

Across all cohorts, low education was associated with increased risk of micro-bleeds (vs high education level,  $OR=1.90$   $95\%CI=1.33-2.72$ , Fig. 2C) independent of age, sex, hypertension, smoking behaviour and adult SES. This was attenuated by additional adjustment for childhood IQ and SES ( $OR=1.24$ ,  $95\%CI=0.71-2.18$ , Supplementary Table 9) but remained. The Simpson's cohort were not included in this multiple regression analysis due to the small number of participants with childhood IQ scores.

Low education was associated with lower brain volume ( $MD= -178.86\text{cm}^3$ ,  $95\%CI=-325.07- -32.66$ , Supplementary Fig. 5a) but this was attenuated after adjustment for vascular risk factors and adult SES ( $\beta= 0.01$ ,  $95\%CI= -0.04-0.06$ , Supplementary Table 10).

## Childhood SES

Across all cohorts manual childhood SES (i.e. more deprived) was associated with decreased risk of lacunes ( $OR=0.62$   $95\%CI=0.40-0.95$ , Fig. 2D).

## Discussion

Early life factors are thought to influence health later in life but there are few studies with such a wealth of data from birth, childhood and later life to tease out which early life factors are important and if they are independent of each other and of exposures in later life. By combining data from almost 2000 participants from four prospective birth cohorts we confirm that low birth weight, low childhood IQ and less education increase SVD burden 5-8 decades later. SVD is important since it increases dementia and stroke risk, two of the largest sources of loss of independence, health and societal costs in older age across the world. Dementia and stroke prevention are government priorities. Life-course models are increasingly recognised in dementia prevention<sup>36</sup> but have largely been ignored in stroke and SVD, which too often focus on mid to later life only, thereby missing major opportunities to prevent these devastating diseases much earlier, as well as gaining other health benefits.

Our findings confirm previous findings that some early life factors may increase risk of SVD burden in later life, but importantly also demonstrate that the associations are independent of vascular risk factors and adult SES and persist after adjustment for the other early life factors. Lower birth weight increased the risk of lacunes, infarcts and PVS across four cohorts, independent of education and childhood SES. In STRADL, the LBC1936 and Simpson's

cohort, higher childhood IQ was associated with fewer infarcts and lacunes, lower WMH and total SVD burden. Associations between childhood IQ, infarcts and total SVD burden were independent of education and childhood SES. Across all cohorts, low education level was associated with more micro-bleeds. These new data show that lower birth weight, childhood IQ and low education are independently associated with increased SVD lesions many decades later.

Low childhood SES was not found to be associated with SVD and associations between childhood SES and lacunes were in the opposite direction to what we expected. This was true for univariate analyses (Supplementary Table 8) and multivariate analyses. This may be because childhood SES reflects SES in adulthood, whereas the other early life factors such as cognitive ability and education capture different aspects of early life adversity. Alternatively, parental occupation, which we used as a measure of SES to allow direct comparison between cohorts, may not have been a sufficiently sensitive measure of actual SES in childhood. Jobs traditionally classed as ‘manual’ such as farmer or skipper trawler can have a high income and the wartime occupations of the parents of some cohort members would have been limited. In the LBC1936 we have previously shown a trend towards an association between SVD at age 72 and age 11 deprivation index.<sup>37,38</sup> Deprivation index encompasses several socioeconomic markers so may be a better measure of SES and thus of associations with SVD in later life.

Increasing age and traditional vascular risk factors, particularly hypertension, are important risk factors for SVD<sup>1,39</sup> but together explain little variance in WMH (~2%)<sup>40,41</sup> suggesting that other factors, as identified here, may contribute to SVD pathology. The effect sizes are small when considered per point difference in IQ score or per 100g difference in birth weight, and the early life variables examined here only explained ~1% of the variance in SVD risk. However, the fact that these effects are evident for such small differences in scores or weights, and at up to seven decades later, underscores that factors influencing early stages in life, including during foetal development and childhood, can impact on brain health in older age and are rightly public health priorities. Furthermore it is likely that our effects are an underestimate of population effects given that our cohorts are healthier with higher IQ than average members of the population. For example the mean age 11 IQ score of the LBC1936 was relatively high with a narrow range compared with the mean age 11 IQ for Scotland in 1947.<sup>42</sup>

Our associations between birth weight and SVD are independent of gestational age and therefore reflect the impact of variations in growth rather than prematurity. The relationship between size at birth and brain structure is biologically plausible: lack of nutrients at particular stages of gestation can impair foetal growth resulting in small size at birth, indicated by low birth weight or disproportionate growth such as low birth weight to length ratio (ponderal index). Long lasting physiological changes in the structure of foetal organs and tissues can increase risk of later disease in adulthood.<sup>43,44</sup> Relations between size at birth and disease in later life including coronary heart disease (CHD)<sup>45,46</sup> are well established, but fewer studies have examined brain health, particularly with this sample size or age range. The current study is one of the few examining the effect of size at birth on brain volumes in later life and the first to examine multiple markers of SVD.

We found no associations between birth weight or ponderal index and WMH burden or brain volumes. This is consistent with data from the (AGES)-Reykjavik study (RS)<sup>47</sup> which reported no association between ponderal index and WMH burden at age 75 after adjustment for vascular risk factors. Birth weight and size are indirect measures of the fetal environment and may not reflect all adverse prenatal circumstances that can affect later life health. The Dutch Famine Birth Cohort previously showed that foetal malnutrition can lead to accelerated cognitive ageing and advanced structural brain ageing, measured using the BrainAGE method (a composite measure based mainly on tissue loss) independent of birth weight.<sup>48</sup>

From a life course perspective, a disadvantaged foetal environment may interact with factors during childhood to increase risk of later disease. Development of neural pathways in the brain extends well into childhood and may therefore mean the brain remains vulnerable to insults for a longer period of time.<sup>49</sup> Our two recent meta-analyses<sup>14,50</sup> found small but statistically significant associations between increasing childhood IQ and lower WMH burden ( $r = -0.07$ ) and a 17% lower risk of stroke. Low education (defined by attainment or years) was associated with a 35% relative increased risk of stroke and a 17% increased risk of SVD. Manual paternal occupation (SES measure) was associated with a 28% increased risk of stroke and increased WMH (only one study identified). However, the previous literature did not allow us to determine the independent effect of these three inter-related early life factors from each other, or from risk factor exposures in adulthood, which we are now able to do.

In many high-income countries age specific incidence rates of dementia are declining.<sup>51,36</sup> Improved health in old age, including cerebrovascular disease and SVD<sup>52</sup>, has been reported across generations and epidemiological studies have found that age adjusted incidence rates of dementia are lower in more recent cohorts compared with cohorts from previous decades.<sup>36,51,52</sup> This can in part be attributed to population public health strategies, advances in treatment and management of patients with cerebrovascular disease and dementia, and improved management of key modifiable risk factors such as smoking and hypertension. Additionally, investment in early life, particularly improvements in living conditions and education, explain some of the decline in incidence of dementia.<sup>53-55</sup> More recent generations of older adults have received more years of statutory education than older cohorts which may increase cognitive reserve and therefore reduce risk of dementia or cerebrovascular disease. This is particularly relevant to our cohorts, whose years of birth span the 20<sup>th</sup> century. Low education increased with increasing age of our cohorts, as did SVD burden. In STRADL (median year of birth 1955) 24% had low education and 17.3% had moderate to severe SVD burden. In the Simpson's cohort (born 1921-1926) 81% had low education and 32% had moderate to severe SVD burden. Increases in life expectancy means that the global population is aging, therefore identifying factors that contribute to reductions in the prevalence and incidence of dementia and cerebrovascular disease is a major priority. Our findings support the suggestion that reducing inequalities, including improvements in education, will contribute to improvements in health in older age and a reduction in the risk of dementia and cerebrovascular disease.

Why might the early life factors increase the risk of SVD in later life? There are numerous potential explanations. Children with higher IQ or from higher socioeconomic backgrounds are likely to receive better diets, medical care, more educational opportunities and hence better job opportunities or less hazardous working conditions. In adulthood, they may be more likely to engage in better lifestyle behaviours and self-management of vascular risk factors. Alternatively, positive early life factors may be associated with, or lead to, an increase in the resilience and integrity of the brain resulting in less SVD. These remain important empirical questions to be addressed in future work.

## **Strengths and limitations**

Strengths include data collected prospectively in early life through to middle or later life, including brain imaging, from different studies in two western European countries. Detailed

birth records allowed correction for gestational age and did not rely on retrospective estimations of birth weight. We used ponderal index and birth weight as measures of infant growth. Ponderal index may be a better indicator of gestational problems than birth-weight percentiles as it provides information on the neonate's body proportionality and can detect situations in which weight growth exceeds or fails to match growth in the infant's length.<sup>56</sup> We adjusted for key adult vascular risk factors and other early life factors in our analyses with a relatively large sample size for some analyses. We also did a detailed characterisation of SVD using multiple individual assessments as well as a summary score.

Limitations include availability of birth data only for some participants in STRADL and the LBC1936. Participants in the Dutch Famine Birth Cohort may be unusual due to their famine exposure, and we have demonstrated excess mortality up to the age of 63 years in women exposed to famine in early gestation<sup>57</sup>. This may have resulted in selective participation of people who were in sufficient health to participate in the present study at age 68 years. Participants with birth data were born in hospitals, which was uncommon at the time of their births. In the Netherlands women largely delivered at home supported by a midwife. Whilst little is known about the actual referring pattern during this period most referrals to hospital were because of social or medical reasons and most referred women were from lower or middle social classes. Two of our cohort's early childhood or early adulthood were spent during the Second World War, which may have influenced the development of cognitive ability or educational opportunities. Although this seems unlikely as IQ scores of those who took the Moray House Test No. 12 in 1947 (born 1936) were higher than the cohort who took them in 1932 (born 1921). The four cohorts recruited community-dwelling volunteers who may be healthier, with less socioeconomic adversity than non-volunteers. Within our cohorts those who completed the MRI were younger and healthier than those who declined. Participants in all but one cohort were largely female and when compared to the Scottish and Dutch population had lower risk factor profiles, were more educated and from higher adult socioeconomic class. Even in our oldest cohort aged 80 years, less than 30% of participants had moderate or severe SVD. The large sample size of some of our cohorts mean that there are participants with a range of socioeconomic backgrounds and medical conditions, but our samples may not be truly representative of the populations from which they are drawn. Our samples came from three regions of Scotland and one region of the Netherlands, which may introduce effects due to local variations in socioeconomic strata but may also increase the generalisability of our findings and may also be considered a strength of our study. Years of education were not

available for all cohorts and the education system in the Netherlands differs from that in Scotland which meant the division into ‘low’ and ‘high’ education level was relatively crude. Whilst we adjusted our models for key vascular risk factors, it was not possible to separate the confounding effects of other prenatal environmental or genetic influences which may affect foetal brain development. In this study we did not adjust for multiple comparisons as a Bonferroni-style correction would have been inappropriate when our variables are not independent. We dealt with multiple comparisons as recommended by Perneger<sup>58</sup> by transparently reporting all results, including those with borderline significance. We also specified our hypotheses a priori based on previous research. However, given the number of statistical comparisons in our analysis it is still possible that some of our associations may be due to Type I error.

SVD frequently coexists with neurodegenerative disease. We did not examine associations between early life factors and biomarkers such as amyloid- $\beta$ , tau or synuclein but given the overlap between neurodegenerative and cerebrovascular pathologies, including shared risk factors<sup>59</sup>, it is possible that the associations observed here may interact with degenerative neuropathologies.

## Conclusions

Our findings suggest an important effect of early life factors, particularly childhood IQ, on brain vascular disease in later life, independent of common vascular risk factors, adult SES and other early life factors. Positive early life factors may influence health behaviours and access to socioeconomic resources beneficial to health, or may increase brain integrity and resilience reducing susceptibility to cerebrovascular disease. Brain vascular disease increases the risk of cognitive impairment, dementia and stroke<sup>1</sup> and worsens chances of recovery after stroke.<sup>3</sup> The current findings may provide a possible mechanistic link between early life factors and risk of stroke and dementia. Health disparities are well known and these findings suggest that such disparities may have effects persist across more than seven decades of life, highlighting the importance of identifying modifiable early life factors as targets for future social policy interventions with have long-lasting impacts.

## Funding

Generation Scotland received core support from the Chief Scientist Office of the Scottish Government Health Directorates [CZD/16/6] and the Scottish Funding Council [HR03006]



and is currently supported by the Wellcome Trust [216767/Z/19/Z]. The MRI data collection was funded by the Wellcome Trust (Wellcome Trust Strategic Award “STratifying Resilience and Depression Longitudinally” (STRADL) Reference 104036/Z/14/Z.” The LBC1936 is supported by Age UK [MR/M01311/1] (<http://www.disconnectedmind.ed.ac.uk>) and the Medical Research Council [G1001245/96099]. LBC1936 MRI brain imaging was supported by Medical Research Council (MRC) grants [G0701120], [G1001245], [MR/M01311/1] and [MR/R024065/1] and Row Fogo Charitable Trust (Grant No. BROD.FID3668413). Simpson’s Cohort was supported by the UK MRC and Chest Heart Stroke Scotland. MJW received funding from TauRx Pharmaceuticals Ltd. EB received funding from the Sackler Foundation. JMW received funding from the UK Dementia Research Institute (DRI Ltd, funded by the UK Medical Research Council, Alzheimer’s Society and Alzheimer’s Research UK) and SVDs@Target, the Fondation Leducq Transatlantic Network of Excellence for the Study of Perivascular Spaces in Small Vessel Disease, ref no. 16 CVD 05.

## Competing interests

The authors report no competing interests.

## References

1. DeBette S, Schilling S, Duperron M-G, Larsson S, Markus H. Clinical significance of magnetic resonance imaging markers of vascular brain injury: A systematic review and meta-analysis. *JAMA Neurol.* 2019;76:81-94
2. Hachinski V, Einhäupl K, Ganten D, al. e. Preventing dementia by preventing stroke: The berlin manifesto. *Alzheimers Dement.* 2019;15:961-984
3. Georgakis MK, Duering M, Wardlaw JM, Dichgans M. WMH and long-term outcomes in ischemic stroke. A systematic review and meta-analysis. *Neurology.* 2019;92:e1298-e1308
4. Wardlaw JM, Smith C, Dichgans M. Mechanisms of sporadic cerebral small vessel disease: Insights from neuroimaging. *Lancet Neurol.* 2013;12:483-497
5. Wardlaw JM, Smith EE, Biessels GJ et al. Neuroimaging standards for research into small vessel disease and its contribution to ageing and neurodegeneration. *Lancet Neurol.* 2013;12:822-838



6. Staals J, Makin SDJ, Doubal FN, Dennis MS, Wardlaw JM. Stroke subtype, vascular risk factors, and total mri brain small-vessel disease burden. *Neurology*. 2014;83:1228-1234
7. Wardlaw JM, Allerhand M, Doubal FN et al. Vascular risk factors, large-artery atheroma, and brain white matter hyperintensities. *Neurology*. 2014;82:1331-1338
8. Backhouse EV, McHutchison CA, Cvorov V, Shenkin SD, Wardlaw JM. Early life risk factors for stroke and cognitive impairment. *Curr Epidemiol Rep*. 2015;2:172-179
9. Barker D. Developmental origins of adult health and disease. *J Epidemiol Comm Health*. 2004;58:114-115
10. Marques A, O'Connor T, Roth C, Susser E, Bjorke-Monsen A. The influence of maternal prenatal and early childhood nutrition and maternal prenatal stress on offspring immune system development and neurodevelopmental disorders. *Front Neurosci*. 2013;7:120
11. Franke K, Van den Bergh BRH, de Rooij SR, Kroegel N, Nathanielsz PW, Rakers F, et al. Effects of maternal stress and nutrient restriction during gestation on offspring neuroanatomy in humans. *Neurosci Biobehav Rev*. 2020
12. Wilcox A. On the importance -and the unimportance- of birthweight. *Int J Epidemiol*. 2001;30:1233-1241
13. Hamilton OK, Backhouse EV, Janssen E et al. Cognitive impairment in sporadic cerebral small vessel disease: A systematic review and meta-analysis. *Alzheimers Dement*. 2020; Nov13. doi: 10.1002/alz.12221
14. Backhouse E, McHutchison C, Cvorov V, Shenkin S, Wardlaw J. Early life risk factors for cerebrovascular disease: A systematic review and meta-analysis. *Neurology*. 2017;88:976-984
15. Navrady LB, Wolters MK, MacIntyre DJ et al. Cohort profile: Stratifying resilience and depression longitudinally (STRADL): a questionnaire follow-up of generation scotland: Scottish family health study (GS:SFHS). *Int J Epidemiol*. 2018;47:13-14g
16. Ravelli ACJ, van der Meulen JHP, Michels RPJ et al. Glucose tolerance in adults after prenatal exposure to famine. *Lancet*. 1998;351:173-177
17. Taylor AM, Pattie A, Deary IJ. Cohort profile update: The Lothian Birth Cohorts of 1921 and 1936. *Int J Epidemiol*. 2018;47(4):1042-1042r
18. Shenkin S, Bastin M, MacGillivray T, Deary I, Starr J, Wardlaw J. Birth parameters are associated with late-life white matter integrity in community-dwelling older people. *Stroke*. 2009;40:1225-1228

19. Leon DA, Lawlor DA, Clark H, Macintyre S. Cohort profile: The Aberdeen Children of the 1950s study. *Int J Epidemiol*. 2006;35:549-552
20. Libby G, Smith A, McEwan NF et al. The walker project: a longitudinal study of 48,000 children born 1952-1966 (aged 36-50 years in 2002) and their families. *Paediatr Perinat Epidemiol*. 2004;18:302-312
21. Habota T, Sandu A, Waiter G et al. Cohort profile for the stratifying resilience and depression longitudinally (STRADL) study: a depression-focused investigation of generation scotland, using detailed clinical, cognitive, and neuroimaging assessments. *Wellcome Open Research*. 2019;4,185
22. de Rooij SR, Caan MWA, Swaab DF et al. Prenatal famine exposure has sex-specific effects on brain size. *Brain*. 2016;139:2136-2142
23. Doubal FN, Dennis M, Wardlaw J. Characteristics of patients with minor ischaemic strokes and negative MRI: A cross-sectional study. *J Neurol Neurosurg Psychiatry*. 2011;82:540-542
24. Shenkin SD, Bastin ME, MacGillivray TJ et al. Cognitive correlates of cerebral white matter lesions and water diffusion tensor parameters in community-dwelling older people. *Cerebrovasc Dis*. 2005;20:310-318
25. Cordonnier C, Potter GM, Jackson CA et al. Improving interrater agreement about brain microbleeds. Development of the Brain Observer MicroBleed Scale (BOMBS). *Stroke* 2009;49:94-99
26. Potter GM, Chappell FM, Morris Z, Wardlaw JM. Cerebral perivascular spaces visible on magnetic resonance imaging: Development of a qualitative rating scale and its observer reliability. *Cerebrovasc Dis*. 2015;39:224-231
27. Klarenbeek P, van Oostenbrugge RJ, Rouhl RPW, Knottnerus ILH, Staals J. Ambulatory blood pressure in patients with lacunar stroke. Association With Total MRI Burden of Cerebral Small Vessel Disease. *Stroke*. 2013;44:2995-2999
28. Huijts M, Duits A, Van Oostenbrugge R, Kroon A, De Leeuw P, Staals J. Accumulation of MRI markers of cerebral small vessel disease is associated with decreased cognitive function. A study in first-ever lacunar stroke and hypertensive patients. *Front Aging Neurosci*. 2013;5:72
29. Staals J, Booth T, Morris Z et al. Total mri load of cerebral small vessel disease and cognitive ability in older people. *Neurobiol Aging*. 2015;36:2806-2811
30. Wardlaw JM, Sellar R. A simple practical classification of cerebral infarcts on CT and its interobserver reliability. *Am J Neuroradiol*. 1994;15:1933-1939.

31. Farrell C, Chappell F, Armitage PA et al. Development and initial testing of normal reference MR images for the brain at ages 65–70 and 75–80 years. *Eur Radiol.* 2009;19:177-183
32. Aribisala B, Valdés Hernández M, Royle N et al. Brain atrophy associations with white matter lesions in the ageing brain: The Lothian Birth Cohort 1936. *Eur Radiol.* 2013;23:1084-1092
33. Bender R., Bunce C., Clarke M et al. Attention should be given to multiplicity issues in systematic reviews. *J Clin Epidemiol.* 2008;61:857-865
34. Fazekas F, Chawluk J, Alavi A, Hurtig H, Zimmerman R. Mr signal abnormalities at 1.5T in Alzheimer's dementia and normal aging. *Am J Roentgenol.* 1987;149:351-356
35. Doubal F, MacLulich A, Ferguson K, Dennis M, Wardlaw J. Enlarged perivascular spaces on mri are a feature of cerebral small vessel disease. *Stroke.* 2010;41:450-454
36. Livingston G, Huntley J, Sommerlad A et al. Dementia prevention, intervention, and care: 2020 report of the Lancet commission. *Lancet.* 2020;396:413-446
37. Field T, Doubal F, Johnson W et al. Early life characteristics and late life burden of cerebral small vessel disease in the lothian birth cohort 1936. *Aging.* 2016;8:2039
38. Valdés Hernández M, Booth T, Murray C et al. Brain white matter damage in aging and cognitive ability in youth and older age. *Neurobiol Aging.* 2013;34:2740-2747
39. Dufouil C, de Kersaint-Gilly A, Besancon V et al. Longitudinal study of blood pressure and white matter hyperintensities the eva mri cohort. *Neurology.* 2001;56:921-926
40. Wardlaw J, Allerhand M, Doubal F et al. Vascular risk factors, large-artery atheroma, and brain white matter hyperintensities. *Neurology.* 2014;82:1331-1338
41. Cox S, Lyall D, Ritchie S et al. Associations between vascular risk factors and brain MRI indices in UK biobank. *Eur Heart J.* 2019;40:2290-2300
42. Murray C., Johnson W., Wolf MS., IJ. D. The association between cognitive ability across the lifespan and health literacy in old age: The Lothian Birth Cohort 1936. *Intelligence.* 2011;39:178-187
43. Langley Evans S. Nutritional programming of disease: Unravelling the mechanism. *J Anatomy.* 2009;215:36-51
44. Goyal D., Limesand SW., R. G. Epigenetic responses and the developmental origins of health and disease. *J Endocrinol.* 2019;242:T105

45. Smith CJ, Ryckman KK, Barnabei VM, Howard BV, Isasi CR, Sarto GE, et al. The impact of birth weight on cardiovascular disease risk in the women's health initiative. *Nutrition, Metabolism and Cardiovascular Diseases*. 2016;26:239-245
46. Lawlor D, Ronalds G, Clark H, Davey Smith G, Leon D. Birth weight is inversely associated with incident coronary heart disease and stroke among individuals born in the 1950s: findings from the Aberdeen Children of the 1950s prospective cohort study. *Circulation*. 2005;112:1414-1418
47. Muller M, Sigurdsson S, Kjartansson O et al. Birth size and brain function 75 years later. *Pediatrics*. 2014;134:761-770
48. de Rooij S, Wouters H, Yonker J, Painter R, Roseboom T. Prenatal undernutrition and cognitive function in late adulthood. *Proc Natl Acad Sci*. 2010;107:16881-16886
49. Walker S, Wachs T, Grantham-McGregor S et al. Inequality in early childhood: risk and protective factors for early child development. *Lancet*. 2011;378:1325-1338
50. McHutchison C, Backhouse E, Cvorov V, Shenkin S, Wardlaw J. Education, socioeconomic status, and intelligence in childhood and stroke risk in later life: A meta-analysis. *Epidemiology*. 2017;28:608-618
51. Wu Wu YT, Beiser AS, Breteler MM, Fratiglioni L, Helmer C, Hendrie HC, Honda H, Ikram MA, Langa KM, Lobo A, Matthews FE. The changing prevalence and incidence of dementia over time—current evidence. *Nat Rev Neurol*. 2017. 13(6):327.
52. Schrijvers, E. M. C. *et al*. Is dementia incidence declining? Trends in dementia incidence since 1990 in the Rotterdam Study. *Neurology* (2012) 78, 1456–1463.
53. Qiu, C., von Strauss, E., Bäckman, L., Winblad, B. & Fratiglioni, L. Twenty-year changes in dementia occurrence suggest decreasing incidence in central Stockholm, Sweden. *Neurology* 2013. 80, 1888–1894.
54. Satizabal, C. L. *et al*. Incidence of dementia over three decades in the Framingham Heart Study. *N. Engl. J. Med* 2016. 374, 523–532.
55. Langa, K. *et al*. A comparison of the prevalence of dementia in the United States in 2000 and 2012. *JAMA Intern. Med*. 2017. 177, 51–58.
56. Patterson R, Pouliot M. Neonatal morphometrics and perinatal outcome: Who is growth retarded? *Am J Obstet Gynecol*. 1987;157:691-693
57. van Abeelen AF, Veenendaal MV, Painter RC et al. Survival effects of prenatal famine exposure. *Am J Clin Nutr*. 2012;95:179-183

58. Perneger TV. What's wrong with Bonferroni adjustments. *Bmj.* (1998) 18;316(7139):1236-8.
59. Greenberg SM, Bacskai BJ, Hernandez-Guillamon M, Pruzin J, Sperling R, van Veluw SJ. Cerebral amyloid angiopathy and Alzheimer disease—one peptide, two pathways. *Nature Reviews Neurology.* 2020 Jan;16(1):30-42.
60. Gray L., Leyland AH., Currie E., Montagu I., Bardsley D., Terje A. et al (2016) Scottish Health Survey 2016, Volume 1- main report. <https://www.gov.scot/publications/scottish-health-survey-2016-volume-1-main-report/pages/47/>
61. 61 Office for National Statistics. (2020). *2011 Census: Aggregate Data.* [data collection]. UK Data Service. SN: 7427, <http://doi.org/10.5257/census/aggregate-2011-2>
62. Smith BH, Campbell A, Linksted P, et al.: Cohort profile: Generation Scotland: Scottish Family Health Study (GS:SFHS). The study, its participants and their potential for genetic research on health and illness. *Int J Epidemiol.* 2013; 42(3): 689–700.
63. Statistics Netherlands (2014) Dutch Census 2011. Central Bureau of statistics Netherlands. <https://www.cbs.nl/en-gb/publication/2014/47/dutch-census-2011>
64. Schelleman, H., Klungel, O., Kromhout, D. et al. Prevalence and determinants of undertreatment of hypertension in the Netherlands. *J Hum Hypertens* 18, 317–324 (2004). <https://doi.org/10.1038/sj.jhh.1001672>
65. Smoking, alcohol and drugs: Health Survey/Lifestyle Monitor, Statistics Netherlands (CBS) in collaboration with National Institute for Public Health and the Environment (RIVM) and Trimbos-institute, 20xx
66. Zorlu A. Occupational adjustment of immigrants in the Netherlands. *Journal of International Migration and Integration.* 2013 14(4):711-31.
67. Ravelli, A. C. J. (1999). Prenatal exposure to the Dutch famine and glucose tolerance and obesity at age 50. Universiteit van Amsterdam.
68. Painter RC, de Rooij SR, Bossuyt PM, et al.. Blood pressure response to psychological stressors in adults after prenatal exposure to the Dutch famine. *Journal of Hypertension.* 2006;24(9):1771–1778. doi: 10.1097/01.hjh.0000242401.45591.e7.
69. Bromly C., Sproston k., Shelton N. (2004) *Scottish Health Survey 2003 summary of findings*, The National Centre for Social Research and Department of Epidemiology and Public Health, University College London <https://www.webarchive.org.uk/wayback/archive/20141129163333/http://www.scotland.gov.uk/Publications/2005/12/02160336/03367>

## Figure legends

**Figure 1: The lifecourse perspective of the risk of SVD and stroke. Adapted from Figure 1, Backhouse *Curr Epidemiol Rep* 2015 2:172-179.**

**Figure 2 (A-D) Forest plots showing associations between features of SVD and (a) birth weight (b) childhood IQ (c) Low education (d) Low childhood SES. All analyses are adjusted for age, sex, hypertension, smoking behaviour and adult SES.**

**Table 1 A-C:** Demographic and health characteristics (A), early life characteristics (B) and imaging characteristics (C) of STRADL, the Dutch Famine Birth cohort, the LBC1936 and the Simpson's cohort.

**(A) Demographic and health characteristics**

	STRADL		Dutch Famine		LBC 1936		Simpson's	
	Total n	n (%)	Total n	n (%)	Total n	n (%)	Total n	n (%)
Age (y) at MRI, mean (SD), range	1080	59.3 (10.1), 26- 84	118	67.5 (0.9), 65-69	685	72.7 (0.7), 71-74	110	78.4 (1.5), 75- 81
Sex, male	1080	437 (40.5)	118	52 (44.1)	685	361 (52.7)	110	33 (30)
Manual adult SES	1070	345 (31.9)	118	44 (37.3)	674	141 (20.9)	110	64 (58.2)
<b>Health history</b>								
History of stroke	1080	33 (3.1)	117	3 (2.6)	685	47 (6.9)	110	16 (14.6)
Hypertension	1080	299 (27.7)	117	62 (53.0)	685	336 (49.1)	110	49 (44.6)
Diabetes	1069	84 (7.9)	118	24 (20.3)	685	72 (10.5)	110	7 (6.4)
Hypercholesterolemia	930	221 (23.7)	117	56 (47.9)	685	287 (41.9)	-	-
Smoking history	962		118		685		110	
Ever smoker		435 (40.3)		72 (61.0)		362 (52.9)		60 (54.6)
Never smoked		527 (48.8)		46 (39.0)		323 (47.2)		50 (45.5)

SES: socioeconomic status; - is used where data not available;

**(B) Early life characteristics**

Variable	STRADL		Dutch Famine		LBC 1936		Simpson's	
	Total N	n (%)	Total N	n (%)	Total N	n (%)	Total N	n (%)
<b>Years of birth</b>	1933-1993 Median year 1955		1944-1947		1936		1921-1926	
<b>Birth factors</b>								
Ponderal index (kg/m <sup>3</sup> ) mean (SD)	-	-	115	26.2 (2.3)	79	27.3 (5.3)	107	25.8 (4.2)
Birth weight (g), mean (SD)	154	3309.3 (529.4)	118	3417.5 (503.4)	140	3351.5 (482.1)	110	3333.6 (457.2)
Low birth weight (<5lbs), n (%)	253	6 (2.4)	-	-	-	-	-	-
Birth length (cm), mean (SD)	-	-	118	51.9 (8.0)	79	50.0 (3.3)	107	50.7 (2.8)
<b>Childhood factors</b>								
Childhood IQ	246	102.0 (8.9)	-	-	648	100.8 (15.3)	30	101.7 (14.5)
Low vs high level of education <sup>a</sup>	1078	259 (24.0)	118	74 (62.7)	685	491 (71.7)	110	89 (80.9)
Manual Father's occupation	1070	719 (67.2)	96	64 (66.7)	627	465 (74.2)	110	76 (69.1)

<sup>a</sup>Low education defined as compulsory education and below (STRADL), lower secondary school and below (Dutch Famine Birth cohort) and 11 years and below (LBC 1936 and Simpson's cohort).

**(C) Imaging characteristics**

Variable	STRADL		Dutch Famine		LBC 1936		Simpson's	
	Total N	n (%)	Total N	n (%)	Total N	n (%)	Total N	n (%)
Visual ratings								
Total SVD score	1058		114		680		96	
0		461 (43.6)		52 (45.6)		302 (44.4)		12 (12.5)
1		414 (39.1)		35 (30.7)		249 (36.6)		53 (55.2)
2		145 (13.7)		16 (14.0)		98 (14.4)		20 (20.8)
3		31 (2.9)		9 (6.0)		27 (4.0)		8 (8.3)
4		7 (0.7)		2 (1.3)		4 (0.6)		3 (3.1)
Mod/sev total SVD score	1058	188 (17.3)	114	27 (23.7)	680	129 (19.0)	97	31 (32.0)

It is made available under a [CC-BY-NC 4.0 International license](https://creativecommons.org/licenses/by-nc/4.0/) .

Mod/sev WMH	1075	114 (10.6)	118	30 (25.4)	685	154 (22.5)	110	27 (24.6)
Mod/sev EPVS	1063	511 (48.1)	114	28 (24.6)	680	276 (40.6)	110	83 (75.5)
I+ Lacune	1076	86 (7.2)	118	26 (22.0)	680	33 (4.9)	110	27 (24.5)
I+ CMB	1074	119 (11.1)	117	16 (13.7)	680	79 (11.6)	97	11 (11.3)
Imaging evidence of I+ infarcts	1076	60 (5.0)	118	22 (18.6)	685	99 (14.5)	110	10 (7.7)
Mod/sev atrophy	1076	70 (5.8)	118	23 (19.5)	685	189 (27.6)	110	64 (58.2)
Brain volumes								
Whole brain volume (mm <sup>3</sup> ), mean (SD)	882	1,064,225.8 (107,249.4)	-	-	657	990,322.7 (89,401.9)	110	1,137,480.3 (98,056.8)
ICV (mm <sup>3</sup> ), mean (SD)	893	1,376,151.5 (22,6471.3)	-	-	659	1,438,223.1 (133,870.1)	95	1,454,751.50 (123,117.80)
WMH volume (mm <sup>3</sup> ), median (IQR)	471	1,510.0	-	-	656	7,896.0 (11,531.0)	107	25,755.4 (27,166.0)

Mod/sev WMH= periventricular WMH with a score of 3 and/or deep WMH with a score of 2-3 on the Fazekas scale<sup>34</sup>; mod/sev EPVS= moderate or severe Enlarged Perivascular Spaces; a score of 2-3 on a semi-quantitative scale in the basal ganglia<sup>35</sup>. CMB= cerebral microbleed



**AGE****11****25****45****65**

### Epidemiological risk factors

#### Birth factors

##### **Birth weight:**

All cohorts (subsample of STRADL and LBC1936)

##### **Ponderal index:**

DFBC, LBC1936 (subsample), Simpson's cohort

#### Childhood factors

##### **Childhood IQ:**

STRADL (subsample), LBC1936, Simpson's cohort (subsample)

##### **Education:**

All cohorts

##### **Socioeconomic status:**

All cohorts

#### Adult factors

##### **Occupation/socioeconomic status:**

All cohorts

##### **Lifestyle factors:** (smoking, hypertension)

All cohorts

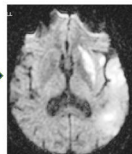
## Stroke

Median age 72

## Dementia



↑ BP  
↑ Chol  
AF  
Atheroma



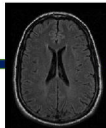
### Accumulating brain vascular disease

#### **Visual scores** (all cohorts)

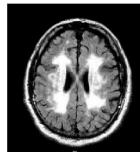
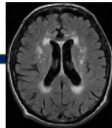
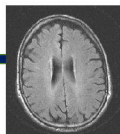
WMH, Microbleeds, lacunes, Perivascular spaces, total SVD burden, infarcts, atrophy

**WMH volume** All cohorts (subsample STRADL)

**Total brain volume** STRADL, LBC1936, Simpson's cohort



'Silent'



Clinically overt

