

Supplementary Tables and Figures

Supplementary Table 1. *Correlation coefficient between the different CETP genetic scores or the rs1800775 variant. The upper triangular matrix shows the Pearson correlation coefficient and the lower triangular shows the squared coefficients. All scores were calculated using the p-value thresholding and LD clumping approach, except for the “Blauw et al. condi. indep.” score which is based on the conditionally independent variants reported in the original study.*

	MAGNETIC HDL diameter	MAGNETIC L-HDL-CE	MAGNETIC S-VLDL-TG	Blauw et al. GRS	Blauw et al. condi. Indep.	SNP rs1800775
MAGNETIC HDL diameter	1	1.00	-1.00	-0.87	-0.94	0.72
MAGNETIC L-HDL-CE	1.00	1	-1.00	-0.87	-0.94	0.72
MAGNETIC S-VLDL-TG	0.99	0.99	1	0.87	0.93	-0.71
Blauw et al. GRS	0.76	0.76	0.76	1	0.87	-0.71
Blauw et al. condi. Indep.	0.89	0.89	0.86	0.75	1	-0.74
SNP rs1800775	0.51	0.51	0.51	0.51	0.55	1

Supplementary Table 2. *Codes used to define cardiovascular endpoint events in the UK Biobank. Events from either the hospitalization or death records were used and the procedure codes (OPCS codes) are from the hospitalization records.*

Variable	Definition
Myocardial infarction (MI)	ICD10 codes: I21, I22, I23, I25.2 or ICD9 codes: 410, 412, 411.0, 429.79
Percutaneous coronary intervention or coronary artery bypass graft (PCI/CABG)	OPCS codes: K40, K41, K42, K43, K44, K45, K46, K49, K50, K75
Coronary artery disease (CAD) - soft	PCI/CABG or ICD9 codes 410-414 (except for aneurysms: 414.1) or ICD10 codes I20-I25
Coronary artery disease (CAD) - hard	Combination of MI, PCI/CABG or hospitalization or death for unstable angina coded a I20.0 as the primary cause of death or hospitalization. For this variable, cases for the “soft” CAD definition that would be controls for the “hard” CAD definition are set as missing so that they are excluded from the analyses.

Supplementary Table 3. *Effect per alternative allele of rs1800775 (CETP -629C>A) on biomarkers and cardiovascular events. Coefficients for continuous variables are from a linear regression model adjusted for age, sex and the first 10 principal components and are expressed in standard deviation of the outcome per “A” allele of the rs1800775 SNP. Odds ratios for cardiovascular outcomes are estimated using a logistic regression model adjusted for the same covariates.*

Outcome	n or n cases	Coefficient or odds ratio (95% CI)	p-value
Biomarkers			

lipoprotein(a)	315,214	-0.0143 (-0.0182, -0.0106)	1.4×10^{-13}
C-reactive protein	394,165	0.0041 (-0.0003, 0.0084)	0.070
HDL cholesterol	362,468	0.198 (0.194, 0.203)	$<10^{-300}$
Apolipoprotein A	360,451	0.156 (0.151, 0.160)	$<10^{-300}$
LDL cholesterol	394,287	-0.028 (-0.033, -0.024)	3.2×10^{-36}
Apolipoprotein B	393,089	-0.041 (-0.045, -0.037)	1.4×10^{-73}
Basal cholesterol efflux (MHI Biobank)	5,213	0.120 (0.0835, 0.156)	1.1×10^{-10}
cAMP-stimulated cholesterol efflux (MHI Biobank)	5,212	0.0919 (0.0547, 0.129)	1.3×10^{-6}
Cardiovascular outcomes			
Coronary artery disease ("soft")	44,713	0.973 (0.959, 0.987)	0.00015
Coronary artery disease ("hard")	26,342	0.968 (0.950, 0.986)	0.00047
Myocardial infarction	18,559	0.982 (0.962, 1.000)	0.10
Percutaneous coronary intervention or coronary artery bypass graft	16,941	0.970 (0.948, 0.992)	0.0068

Supplementary Table 4. *Drug codings to define statin users in the UK Biobank.*

UK biobank Data-Coding 4	Prescription
1140861958	simvastatin
1141146234	atorvastatin
1141146138	lipitor 10mg tablet
1141192410	rosuvastatin
1141192736	ezetimibe
1140888648	pravastatin
1141188146	simvador 10mg tablet
1141192414	crestor 10mg tablet
1140881748	zocor 10mg tablet
1141200040	zocor heart-pro 10mg tablet

Supplementary Table 5. Interaction between the CETP genetic score and **sex** on the additive scale (RERI and interaction contrast) based on the logistic regression model in the UK Biobank.

Outcome	Odds ratio RERI (95% CI)	Interaction contrast (bootstrap 95% CI)
Coronary artery disease (“soft”)	0.031 (-0.006, 0.070)	0.0011 (-0.00074, 0.0029)
Coronary artery disease (“hard”)	0.082 (0.020, 0.146)	0.0017 (0.00024, 0.0032)
Myocardial infarction	0.050 (-0.018, 0.121)	0.00078 (-0.00042, 0.0019)
Percutaneous coronary intervention or coronary artery bypass graft	0.091 (-0.003, 0.188)	0.00099 (-0.00012, 0.0021)

Supplementary Table 6. ANOVA results for the nonlinear interaction models of the CETP genetic score and BMI on biomarkers and cardiovascular outcomes. Linear regression was used for biomarkers and logistic regression was used for cardiovascular outcomes. The presented association statistics are F statistics for the former and χ^2 for the latter. Both the CETP score and BMI are modeled using restricted cubic splines with 4 knots.

Outcome	Factor	Statistic (F or chi2)	d.f.	P-value
<i>Biomarkers (modeled using linear regression)</i>				
Lipoprotein(a)*	All interactions (BMI and CETP)	2.14	9	0.0233
	BMI	15.55	12	< 0.0001
	Nonlinear effects	22.09	8	< 0.0001
	CETP genetic score	6.91	12	< 0.0001
	Nonlinear effects	0.94	8	0.4793
C-reactive protein	All interactions (BMI and CETP)	0.89	9	0.5299
	BMI	7662.84	12	< 0.0001
	Nonlinear effects	19.81	8	< 0.0001
	CETP genetic score	1.47	12	0.1265
	Nonlinear effects	0.66	8	0.7247
HDL cholesterol	All interactions (BMI and CETP)	37.41	9	< 0.0001
	BMI	4975.76	12	< 0.0001
	Nonlinear effects	189.61	8	< 0.0001
	CETP genetic score	1242.72	12	< 0.0001
	Nonlinear effects	8.51	8	< 0.0001
Apolipoprotein A	All interactions (BMI and CETP)	11.72	9	< 0.0001
	BMI	2632.38	12	< 0.0001
	Nonlinear effects	77.75	8	< 0.0001
	CETP genetic score	683.50	12	< 0.0001
	Nonlinear effects	2.05	8	0.0365
LDL cholesterol	All interactions (BMI and CETP)	3.68	9	0.0001

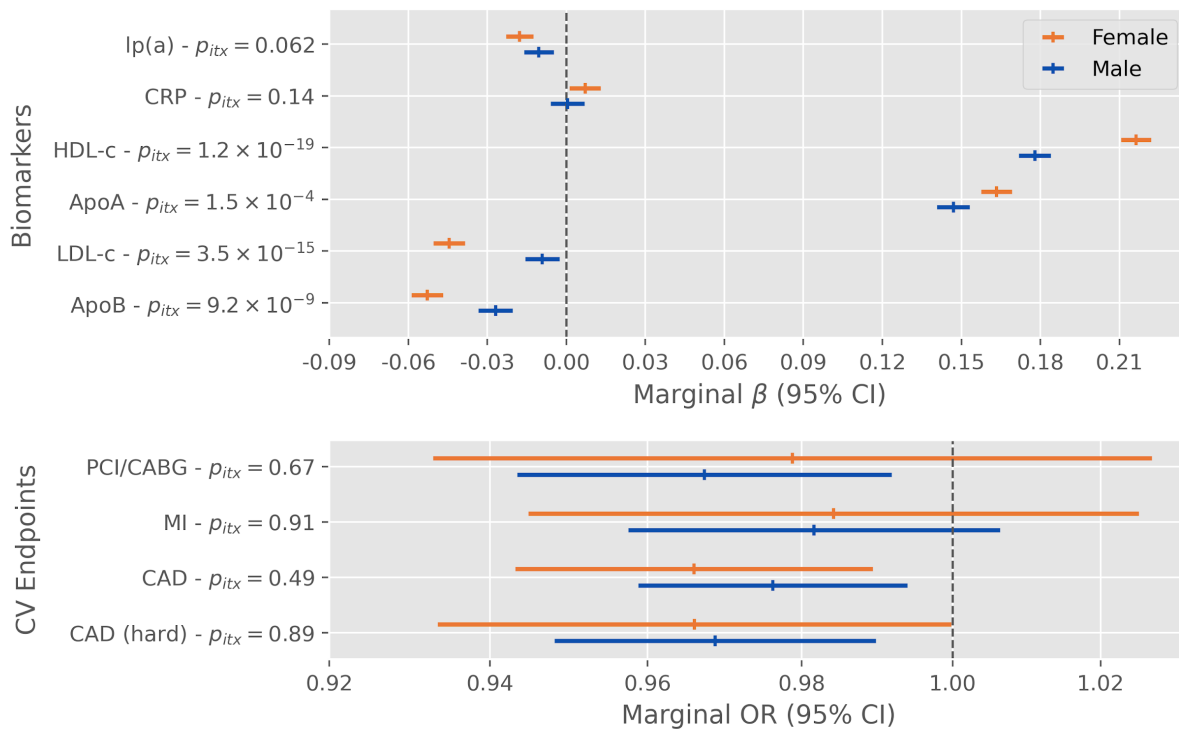
	BMI	521.46	12	< 0.0001
	Nonlinear effects	704.12	8	< 0.0001
	CETP genetic score	20.57	12	< 0.0001
	Nonlinear effects	3.17	8	0.0013
Apolipoprotein B	All interactions (BMI and CETP)	2.29	9	0.0147
	BMI	733.80	12	< 0.0001
	Nonlinear effects	638.04	8	< 0.0001
	CETP genetic score	38.91	12	< 0.0001
	Nonlinear effects	2.70	8	0.0058
Basal cholesterol efflux (MHI Biobank)	All interactions (BMI and CETP)	0.66	9	0.7473
	BMI	17.55	12	< 0.0001
	Nonlinear effects	1.91	8	0.0537
	CETP genetic score	5.84	12	< 0.0001
	Nonlinear effects	0.64	8	0.7437
cAMP-stimulated cholesterol efflux (MHI Biobank)	All interactions (BMI and CETP)	0.49	9	0.8815
	BMI	4.27	12	< 0.0001
	Nonlinear effects	0.50	8	0.8537
	CETP genetic score	3.67	12	< 0.0001
	Nonlinear effects	0.64	8	0.7439
Cardiovascular outcomes (<i>modeled using logistic regression</i>)				
Coronary artery disease ("soft")	All interactions (BMI and CETP)	8.10	9	0.5244
	BMI	4892.66	12	< 0.0001
	Nonlinear effects	128.51	8	< 0.0001
	CETP genetic score	30.67	12	0.0022
	Nonlinear effects	4.84	8	0.7742
Coronary artery disease ("hard")	All interactions (BMI and CETP)	6.16	9	0.72
	BMI	2798.71	12	< 0.0001
	Nonlinear effects	68.01	8	< 0.0001
	CETP genetic score	25.36	12	0.0132
	Nonlinear effects	3.19	8	0.9219
Myocardial infarction	All interactions (BMI and CETP)	8.64	9	0.4716
	BMI	1857.02	12	< 0.0001
	Nonlinear effects	69.72	8	< 0.0001
	CETP genetic score	15.49	12	0.2157
	Nonlinear effects	5.71	8	0.6798

Percutaneous coronary intervention or coronary artery bypass graft	All interactions (BMI and CETP)	5.49	9	0.7893
	BMI	1254.46	12	< 0.0001
	Nonlinear effects	122.46	8	< 0.0001
	CETP genetic score	22.25	12	0.0349
	Nonlinear effects	3.37	8	1

* The Lp(a) genetic score was added as a covariate.

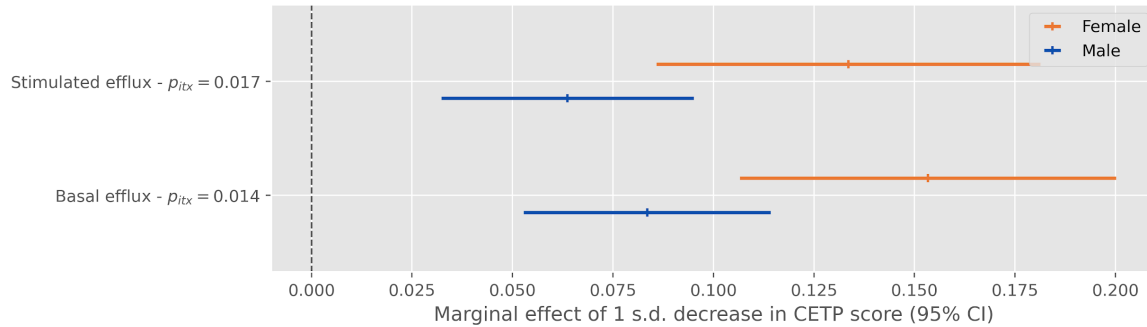
Supplementary Table 7. Interaction between the CETP genetic score and **body mass index** on the additive scale (RERI and interaction contrast) based on the logistic regression model in the UK Biobank.

Outcome	Odds ratio RERI (95% CI)	Interaction contrast (bootstrap 95% CI)
Coronary artery disease (“soft”)	-0.002 (-0.017, 0.012)	-0.00030 (-0.0013, 0.00076)
Coronary artery disease (“hard”)	-0.001 (-0.020, 0.018)	-9.5×10^{-5} (-0.00090, 0.00068)
Myocardial infarction	-0.005 (-0.025, 0.016)	-0.00014 (-0.00073, 0.00043)
Percutaneous coronary intervention or coronary artery bypass graft	0.00039 (-0.021, 0.022)	-5.8×10^{-6} (-0.00051, 0.00051)

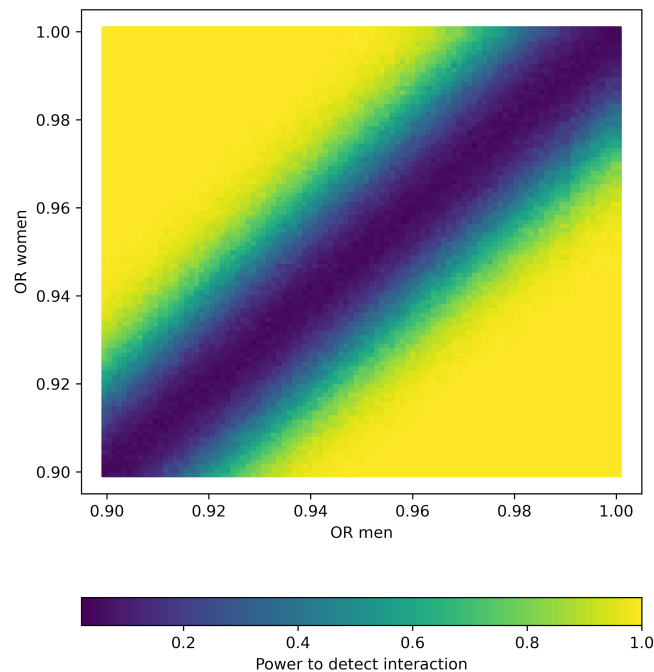


Supplementary Figure 1. Effect modification of **rs1800775** (CETP -629C>A) alternative alleles by sex on biomarkers and cardiovascular endpoints in the UK Biobank. Displayed

p -values (p_{itx}) are for the two-sided test of the product term between the SNP and a binary sex indicator variable.

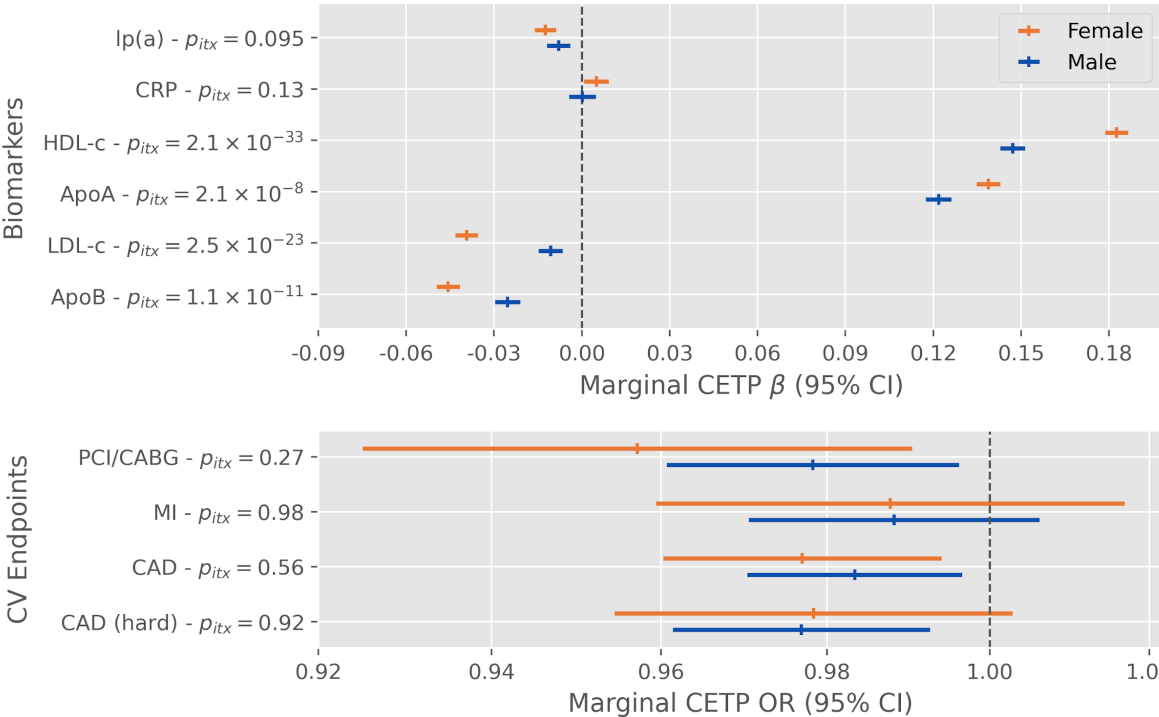


Supplementary Figure 2. Effect modification of a 1 standard deviation decrease in the CETP concentration genetic score by sex on cholesterol efflux in the MHI Biobank. Displayed p -values (p_{itx}) are for the two-sided test of the product term between the CETP score and a binary sex indicator variable.

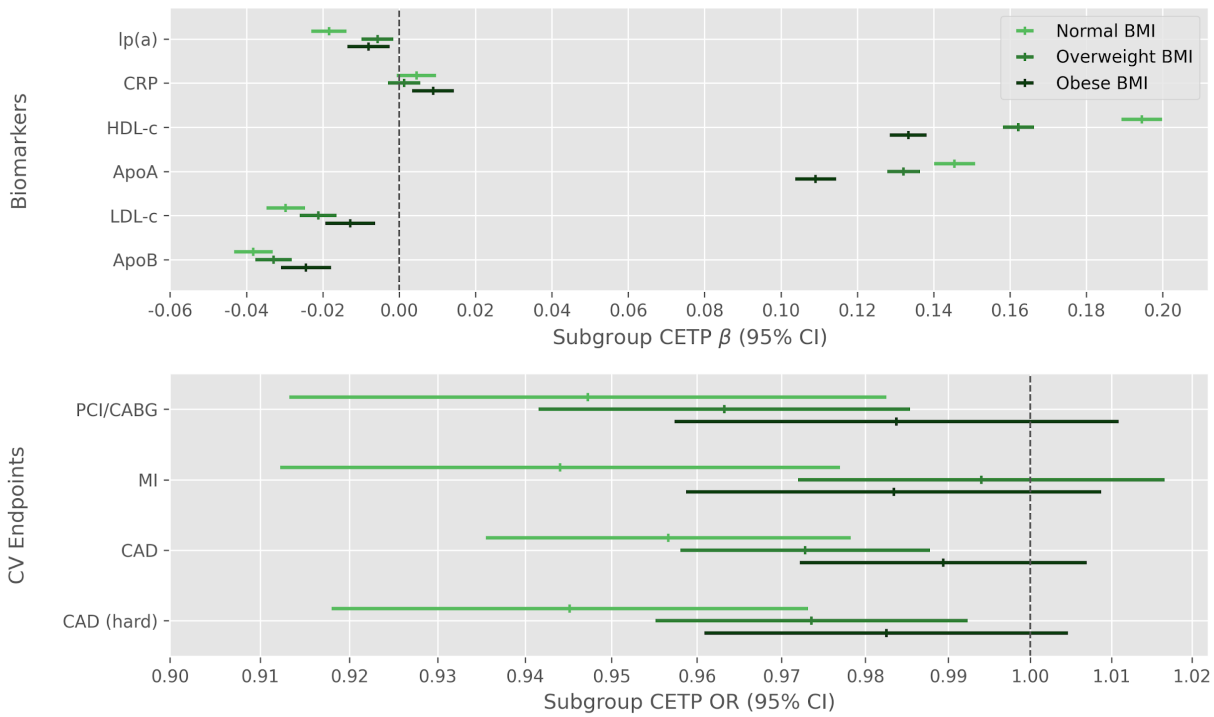


Supplementary Figure 3. Power to detect a difference between men and women in the association between a standardized genetic score and a coronary artery disease. The results of this simulation are for 500 simulated datasets for different combinations of OR in men and

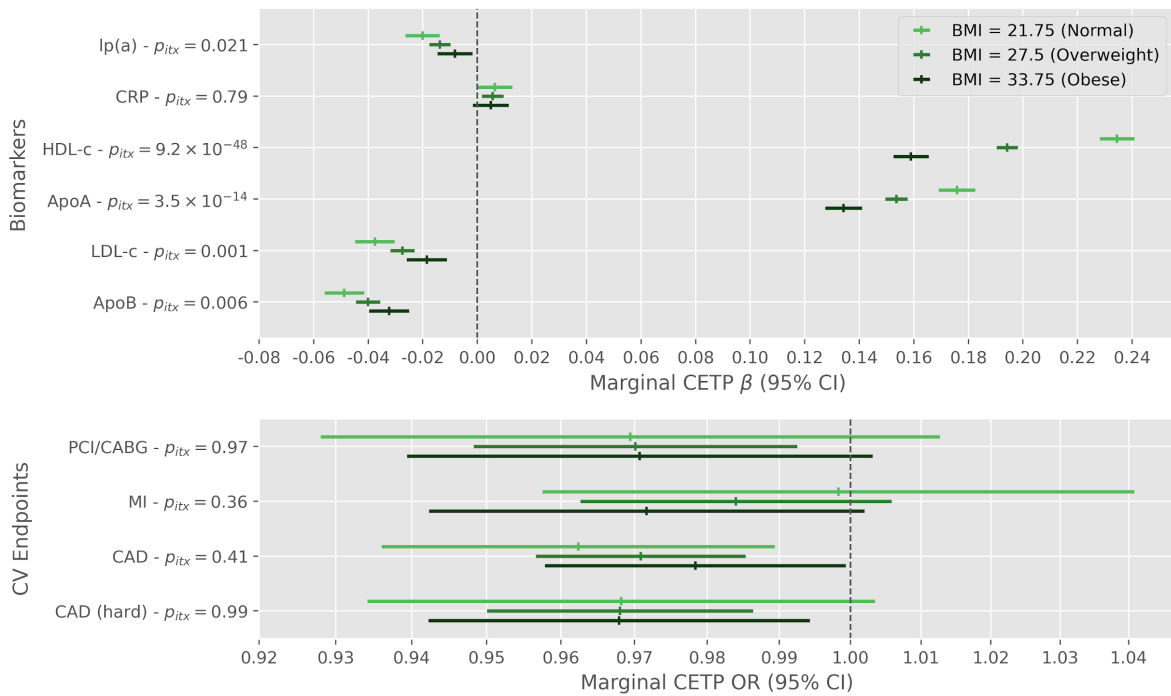
women and given the sample size ($n=413,138$) and prevalence of coronary artery disease (“soft” definition, 10.8%) in our dataset.



Supplementary Figure 4. Effect modification of a 1 standard deviation decrease in the CETP concentration genetic score by sex on biomarkers and cardiovascular endpoints **adjusting for self-reported statin use** in the UK Biobank. Displayed p -values (p_{itx}) are for the two-sided test of the product term between the CETP score and a binary sex indicator variable.

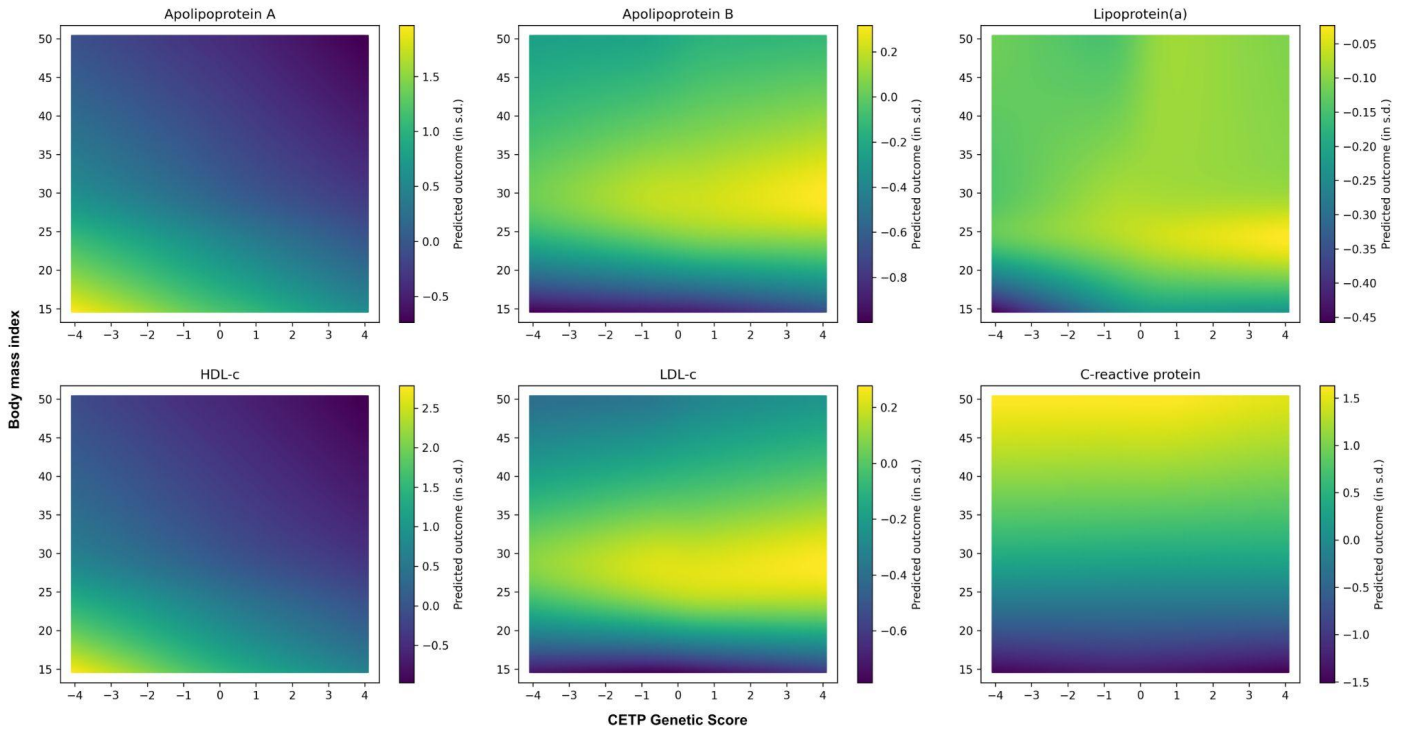


Supplementary Figure 5. Subgroup effect of a 1 standard deviation decrease in the CETP concentration genetic score on biomarkers and cardiovascular endpoints by BMI class in the UK Biobank.

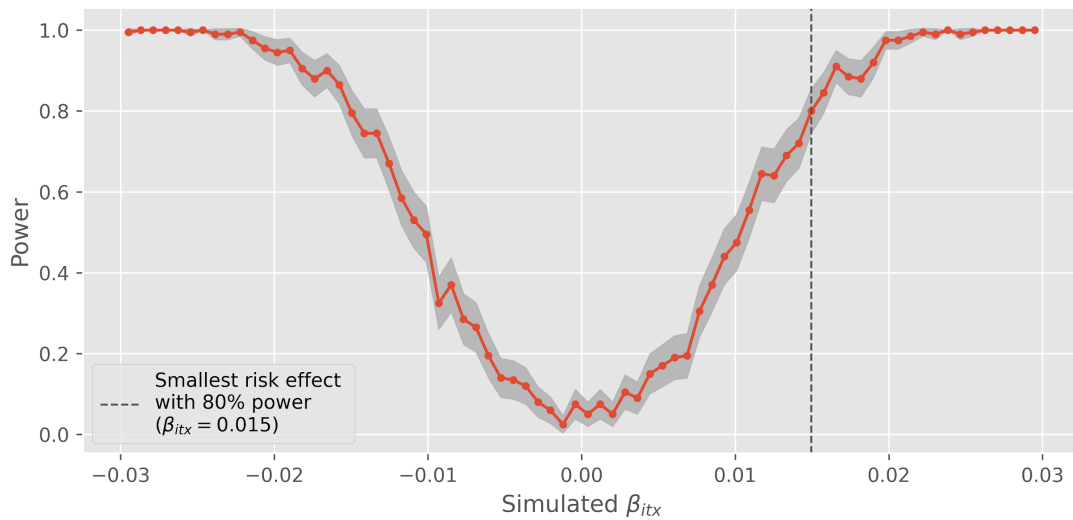


Supplementary Figure 6. Effect modification of rs1800775 (CETP -629C>A) alternative alleles by BMI on biomarkers and cardiovascular endpoints in the UK Biobank. Displayed

p -values (p_{itx}) are for the two-sided test of the product term between the SNP and standardized body mass index.

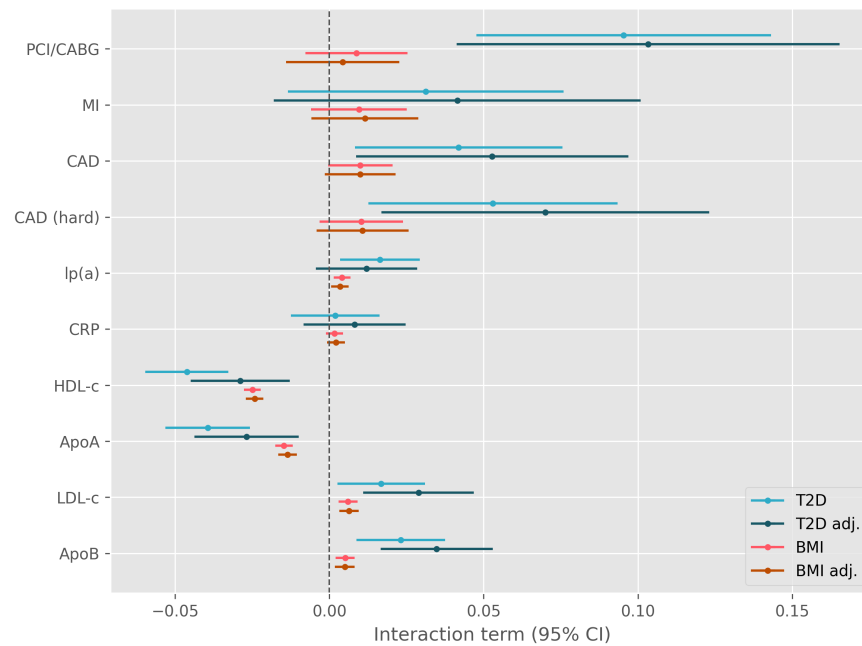


Supplementary Figure 7. Expected value of the standardized biomarkers predicted by linear regression models including interacting splines for the BMI and the genetic score. The CETP genetic score was set to values between -4 and 4 (x axis) and the BMI was set to values between 15 and 50 (y axis).

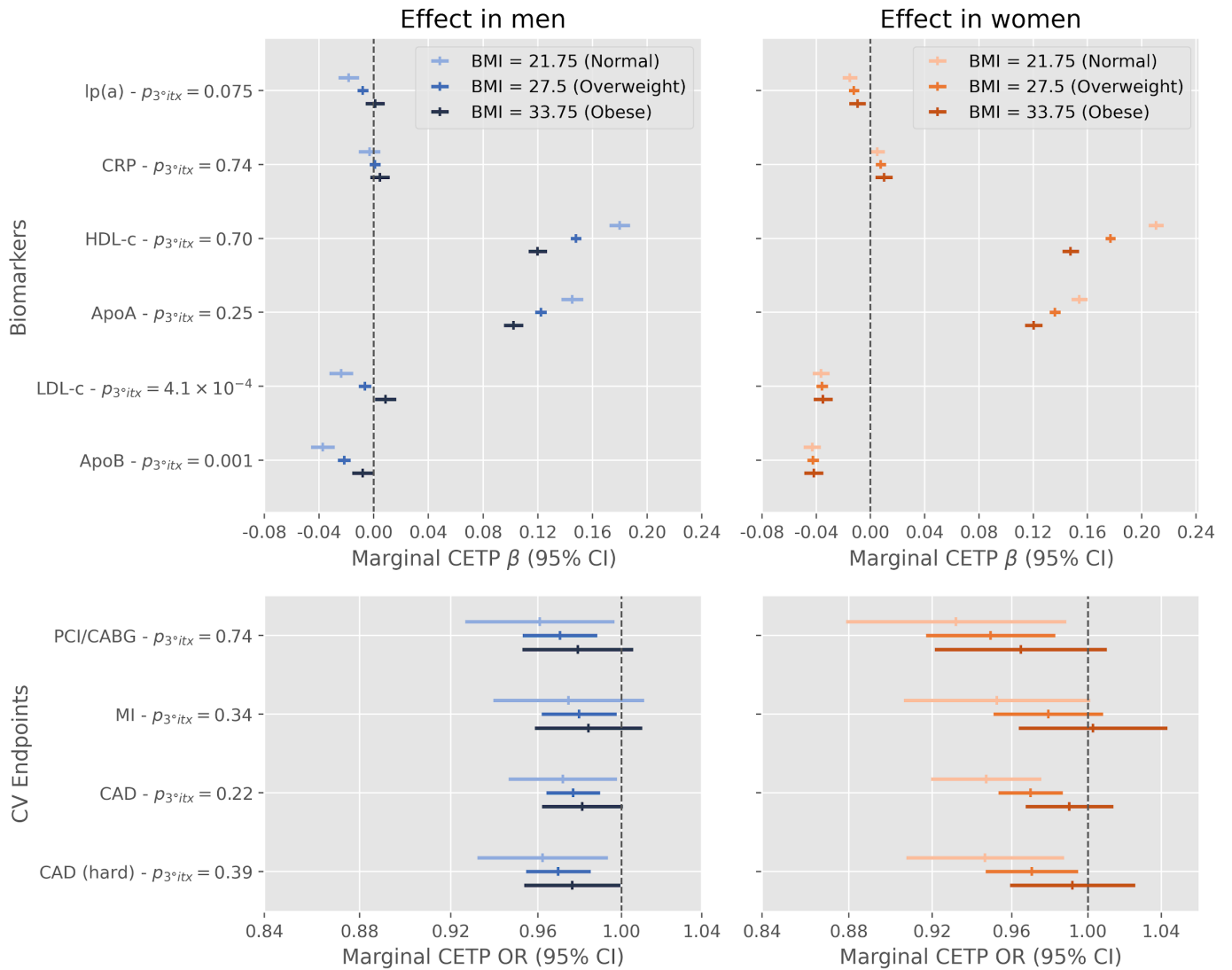


Supplementary Figure 8. Simulation-based power analysis to detect an additive interaction effect between a continuous CETP score and standardized BMI. This simulation sets as static

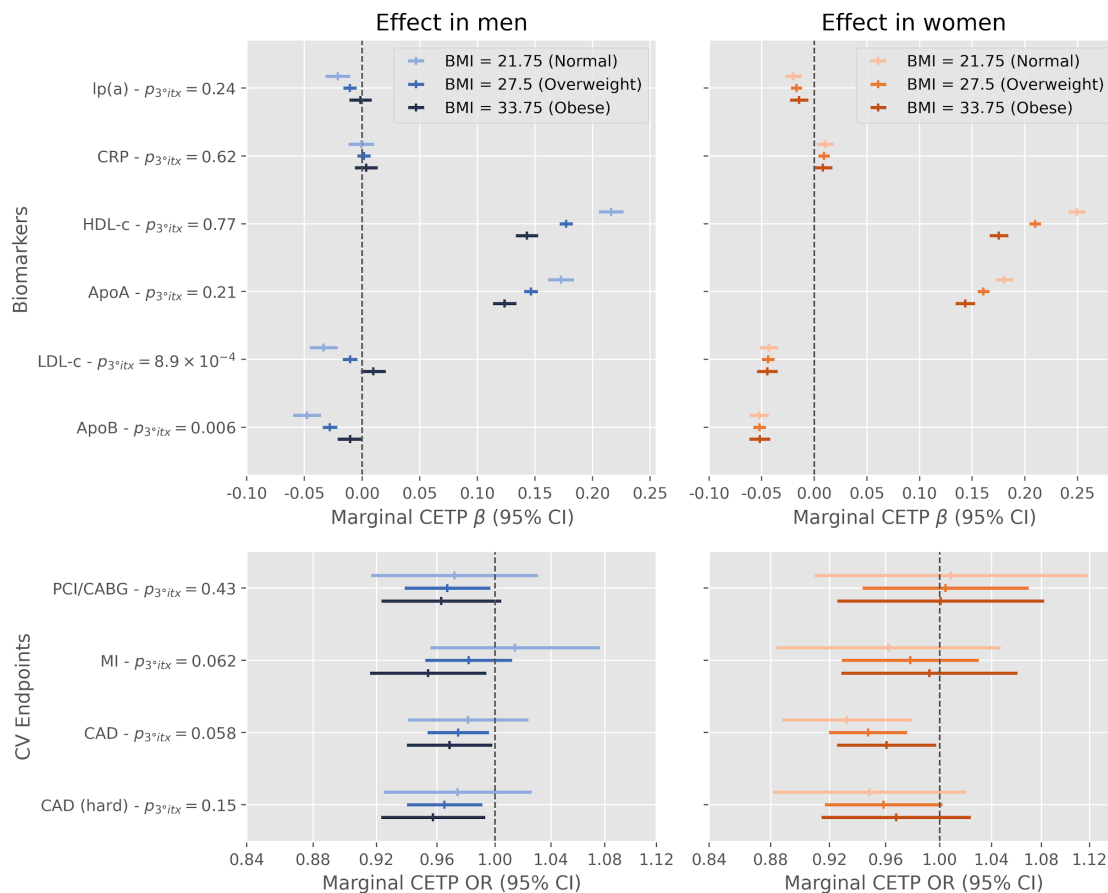
parameters the prevalence of CAD and the mean effect of a reduction in the CETP score. Results are based on 200 simulation replicates of 413,138 individuals.



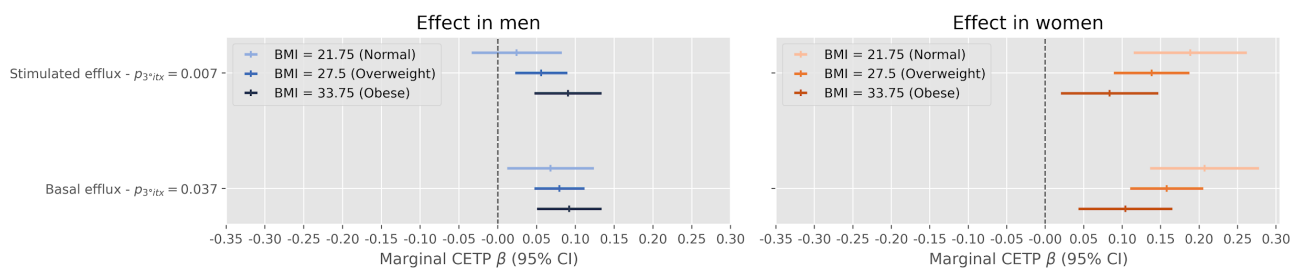
Supplementary Figure 9. Interaction coefficients between the CETP genetic score and type II diabetes and BMI with and without adjustment for the other variable in the UK Biobank. The unadjusted model includes the product interaction term between CETP and type II diabetes or BMI whereas the adjusted model includes the three-way product interaction.



Supplementary Figure 10. Effect modification of a 1 standard deviation decrease in the CETP concentration genetic score by BMI and sex on biomarkers and cardiovascular endpoints in the UK Biobank. Displayed p -values (p_{3^*itx}) are for the two-sided test of the three way product term between the CETP score, standardized body mass index and a binary variable for sex.



Supplementary Figure 11. Effect modification of rs1800775 (CETP -629C>A) alternative alleles by BMI and sex on biomarkers and cardiovascular endpoints in the UK Biobank. Displayed p -values (p_{3^*itx}) are for the two-sided test of the three-way product term between the SNP, a binary variable for sex and standardized body mass index.



Supplementary Figure 12 Effect modification of the CETP score on cholesterol efflux in the MHI Biobank by sex and BMI.