

List of Supplementary Materials

1. Supplementary acknowledgements
 - a. ERCB
 - b. NEPTUNE
 - c. H3 Africa
2. Supplementary Figure S1. Cluster dendrogram and assignment of MCD and FSGS participants based on kidney biopsy tubulointerstitial gene expression data in NEPTUNE, ERCB and H3 Africa
3. Supplementary Figure S2. Comparison of cluster assignment and clinical measures in NEPTUNE and ERCB using glomerular compartment expression data
4. Supplementary Figure S3. Comparison of clinical factors and cluster assignment across cohorts
5. Supplementary Table S1. Predicted Upstream Regulators based on DEG profiles of patients in cluster 3 relative to clusters 1 and 2.
6. Supplementary Table S2. Genes and gene products activated by TNF used to generate the TNF activation score.
7. Supplementary Table S3. Clinical characteristics of NEPTUNE participants with biopsies used for snRNAseq

ERCB members at the time of the study: Clemens David Cohen, Holger Schmid, Michael Fischereeder, Lutz Weber, Matthias Kretzler, Detlef Schlöndorff, Munich/Zurich/AnnArbor/New York; Jean Daniel. Sraer, Pierre Ronco, Paris; Maria Pia Rastaldi, Giuseppe D'Amico, Milano; Peter Doran, Hugh Brady, Dublin; Detlev Mönks, Christoph Wanner, Würzburg; Andrew Rees, Aberdeen and Vienna; Frank Strutz, Gerhard Anton Müller, Göttingen; Peter Mertens, Jürgen Floege, Aachen; Norbert Braun, Teut Risler, Tübingen; Loreto Gesualdo, Francesco Paolo Schena, Bari; Gunter Wolf, Jena; Rainer Oberbauer, Donscho Kerjaschki, Vienna; Bernhard Banas, Bernhard Krämer, Regensburg; Moin Saleem, Bristol; Rudolf Wüthrich, Zurich; Walter Samtleben, Munich; Harm Peters, Hans-Hellmut Neumayer, Berlin; Mohamed Daha, Leiden; Katrin Ivens, Bernd Grabensee, Düsseldorf; Francisco Mampaso(†), Madrid; Jun Oh, Franz Schaefer, Martin Zeier, Hermann-Joseph Gröne, Heidelberg; Peter Gross, Dresden; Giancarlo Tonolo; Sassari; Vladimir Tesar, Prague; Harald Rupprecht, Bayreuth; Hermann Pavenstädt, Münster; Hans-Peter Marti, Bern; Peter Mertens, Magdeburg, Jens Gerth, Zwickau.

Members of the Nephrotic Syndrome Study Network (NEPTUNE) at the time of the study

NEPTUNE Enrolling Centers

Case Western Reserve University, Cleveland, OH: J Sedor*, K Dell**, M Schachere#, J Negrey
Children's Hospital, Los Angeles, CA: K Lemley*, L Whitted#
Children's Mercy Hospital, Kansas City, MO: T Srivastava*, C Haney#
Cohen Children's Hospital, New Hyde Park, NY: C Sethna*, K Grammatikopoulos#, R Odusayana
Columbia University, New York, NY: G Appel*, M Toledo#
Emory University, Atlanta, GA: L Greenbaum*, C Wang**, B Lee#
Harbor-University of California Los Angeles Medical Center: S Adler*, C Nast*‡, J La Page#
John H. Stroger Jr. Hospital of Cook County, Chicago, IL: A Athavale*
Johns Hopkins Medicine, Baltimore, MD: M. Atkinson, A Neu*, S Boynton#
Mayo Clinic, Rochester, MN: F Fervenza*, M Hogan**, J Lieske*, V Chernitskiy#
Montefiore Medical Center, Bronx, NY: F Kaskel*, N Kumar*, P Flynn#
NIDDK Intramural, Bethesda MD: J Kopp*, E Castro-Rubio#, J Blake#
New York University Medical Center, New York, NY: H Trachtman*, O Zhdanova**, F Modersitzki#, S Vento#
Stanford University, Stanford, CA: R Lafayette*, M O'Shaughnessy**, K Mehta#
Temple University, Philadelphia, PA: C Gadegbeku*, D Johnstone**, S Quinn-Boyle
University Health Network Toronto: D Cattran*, M Hladunewich**, H Reich**, P Ling#, M Romano#
University of Miami, Miami, FL: A Fornoni*, L Barisoni*, C Bidot#
University of Michigan, Ann Arbor, MI: M Kretzler*, D Gipson*, A Williams#, R Pitter#
University of North Carolina, Chapel Hill, NC: V Derebail*, K Gibson*, S Grubbs#, A Froment#
University of Pennsylvania, Philadelphia, PA: L Holzman*, K Meyers**, K Kallem#, A Swensen#
University of Texas Southwestern, Dallas, TX: K Sambandam*, E Brown**, Z Wang#
University of Washington, Seattle, WA: A Jefferson*, S Hingorani**, K Tuttle**§, L Curtin#, S Dismuke#, A Cooper#§
Wake Forest University, Winston-Salem, NC: B Freedman*, JJ Lin**, S Gray#
Data Analysis and Coordinating Center: M Kretzler, L Barisoni, C Gadegbeku, B Gillespie, D Gipson, L Holzman, L Mariani, M Sampson, P Song, J Troost, J Zee, E Herreshoff, S Li, C Lienczewski, T Mainieri, M Wladkowski, A Williams, D Zinsser
National Institute of Diabetes and Digestive and Kidney Diseases (NIDDK) Program Office: K Abbott, C Roy
The National Center for Advancing Translational Sciences (NCATS) Program Office: T Urv, PJ Brooks

*Principal Investigator; **Co-investigator; #Study Coordinator

‡Cedars-Sinai Medical Center, Los Angeles, CA

§Providence Medical Research Center, Spokane, WA

Members of the Human Heredity and Health in Africa Kidney Disease Research Network cohort (H3Africa)

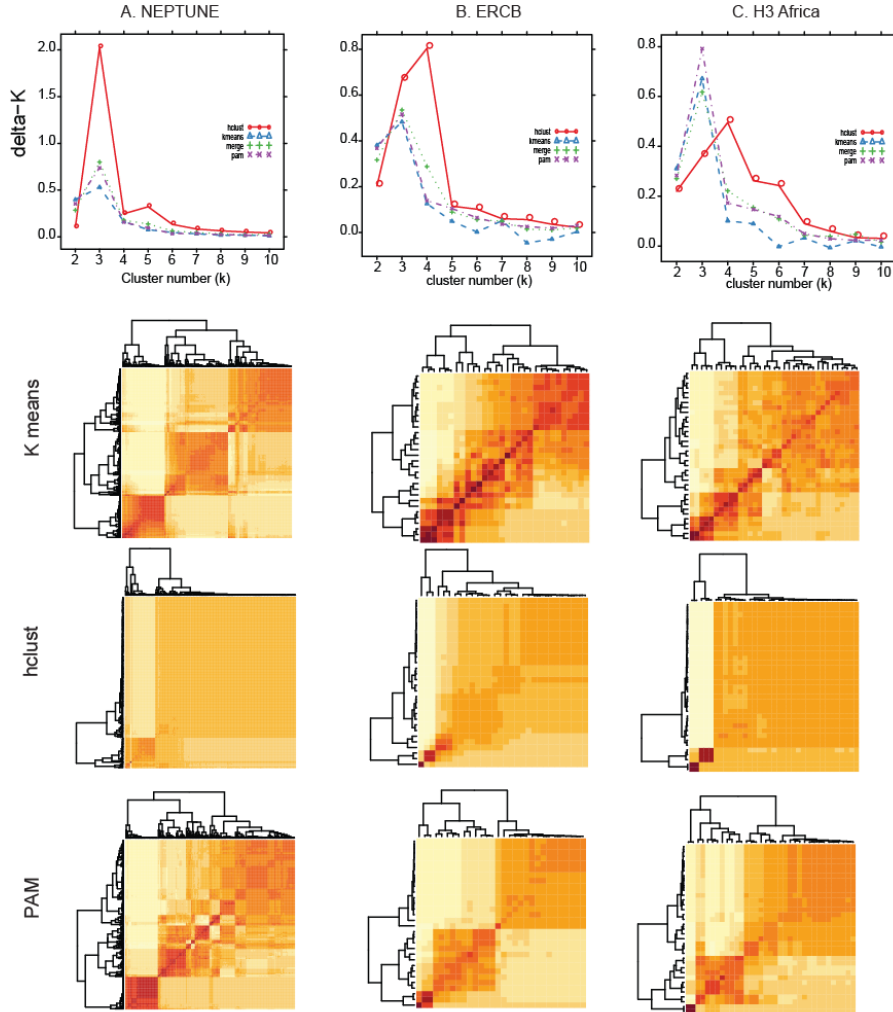
Samuel Ajayi¹, Yemi Raji¹, Timothy Olanrewaju², Charlotte Osafo³, Ifeoma Ulasi⁴, Adanze Asinobi¹, Cheryl A. Winkler⁵, David Burke⁶, Fatiu Arogundade⁷, Ivy Ekem⁸, Jacob Plange-Rhule^{9**}, Manmak Mamven¹⁰, Michael Mate-kole³, Olukemi Amodu¹, Richard Cooper¹¹, Sampson Antwi⁹, Adebowale Adeyemo¹², Titilayo Ilori¹³, Victoria Adabayeri³, Alexander Nyarko¹⁴, Anita Ghansah¹⁴, Ernestine Kubi Amos-Abanyie¹⁴, Priscilla Abena Akyaw¹⁴, Babatunde L. Salako¹, Rulan S. Parekh¹⁵, Bamidele Tayo¹¹, Rasheed Gbadegesin¹⁶, Michael Boehnke⁶, Robert Lyons⁶, Frank (Chip) Brosius⁶, Daniel Clauw⁶, Chijioke Adindu², Clement Bewaji², Elliot Koranteng Tannor⁹, Perditer Okyere⁹, Chuba Ijoma⁴, Nicki Tiffin¹⁷, Junaid Gamiedien¹⁷, Friedhelm Hildebrandt¹⁸, Charles Odenigbo¹⁹, Nonyelun Jisieike-Onuigbo¹⁹, Ifeoma Modebe¹⁹, Aliyu Abdu²⁰, Patience Obiagwu²⁰, Ogochukwu Okoye²¹, Adaobi Solarin²², Toyin Amira²³, Christopher Esezobor²³, Muhammad Makusidi²⁴, Santosh Saraf²⁵, Victor Gordeuk²⁵, Gloria Ashuntangtang²⁶, Georgette Guenkam²⁶, Folefack Kazi²⁶, Olanrewaju Adedoyin², Mignon McCullough²⁷, Peter Nourse²⁷, Uche Okafor⁴, Emmanuel Anigilaje¹⁰, Patrick Ikpebe²², Tola Odetunde⁴, Ngozi Mbanefo⁴, Wasiu Olowu⁷, Paulina Tindana³, Olubenga Awobusuyi²², Olugbenga Ogedegbe²⁸, Opeyemi Olabisi²⁹, Karl Skorecki³⁰, Ademola Adebowale¹, Matthias Kretzler⁶, Jeffrey Hodgin⁶, Dwomoa Adu³, Akinlolu Ojo³¹, Vincent Boima³

Affiliated Institutions

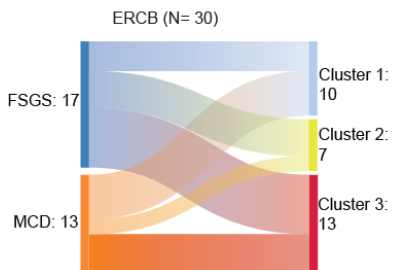
1. Department of Medicine, Pediatrics and Institute of Child Health, University of Ibadan, Ibadan, Nigeria
2. University of Ilorin, Ilorin, Nigeria
3. University of Ghana Medical School, Accra, Ghana
4. University of Nigeria, Enugu State, Nigeria
5. Basic Research Laboratory, Frederick National Laboratory for Cancer Research, National Cancer Institute, Frederick, MD, USA
6. Departments of Human Genetics, Internal Medicine and Pathology, University of Michigan, Ann Arbor, MI, USA
7. Obafemi Awolowo University, Ile- Ife, Nigeria
8. University of Cape Coast, Cape Coast, Ghana
9. Kwame Nkrumah University of Science and Technology, Kumasi, Ghana
10. University of Abuja, Abuja, Nigeria
11. Parkinson School of Health Sciences and Public Health, Loyola University, Chicago, IL, USA
12. Centre for Research on Genomics and Global Health, National Human Genome Research Institute, National Institutes of Health, Bethesda, MD, USA
13. Division of Nephrology, Boston Medical Center, Boston University School of Medicine, Boston, MA, USA
14. Noguchi Memorial Institute for Medical Research, University of Ghana, Ghana
15. Department of Pediatrics, University of Toronto, Toronto, Canada.
16. Department of Pediatrics, Duke University Medical Center, Durham, NC, USA
17. University of Western Cape, Cape Town, South Africa
18. Harvard Medical School, Harvard University, Boston, MA, USA
19. Nnamdi Azikiwe University Teaching Hospital, Nnewi, Nigeria
20. Aminu Kano Teaching Hospital, Kano, Nigeria
21. Delta State University Teaching Hospital, Warri, Nigeria
22. Lagos State University Teaching Hospital, Lagos, Nigeria
23. Lagos University Teaching Hospital, University of Lagos, College of Medicine, Lagos, Nigeria
24. Usmanu Danfodiyo University Teaching Hospital, Sokoto, Nigeria
25. University of Illinois at Chicago, Chicago IL, USA
26. University of Yaoundé, Yaoundé, Cameroon
27. University of Cape Town, Cape Town, South Africa
28. New York University, New York City, NY, USA
29. Duke University, Durham, NC, USA
30. Technion-Israel Institute of Technology, Haifa, Israel
31. University of Kansas School of Medicine, Kansas City, KS, USA

**Deceased

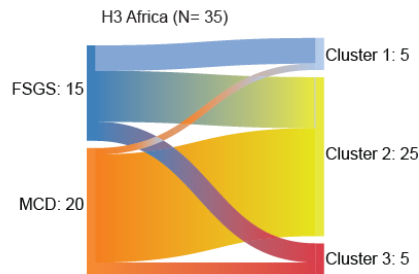
Supplementary Figure S1. Optimal cluster determination and similarity matrices using different clustering algorithms from transcriptomic profiles of MCD and FSGS participants based on kidney biopsy tubulointerstitial gene expression data in NEPTUNE (A), ERCB (B), and H3 Africa (C). Sankey diagrams from the ERCB (D) and H3 Africa (E) cohorts comparing diagnosis with cluster assignment.



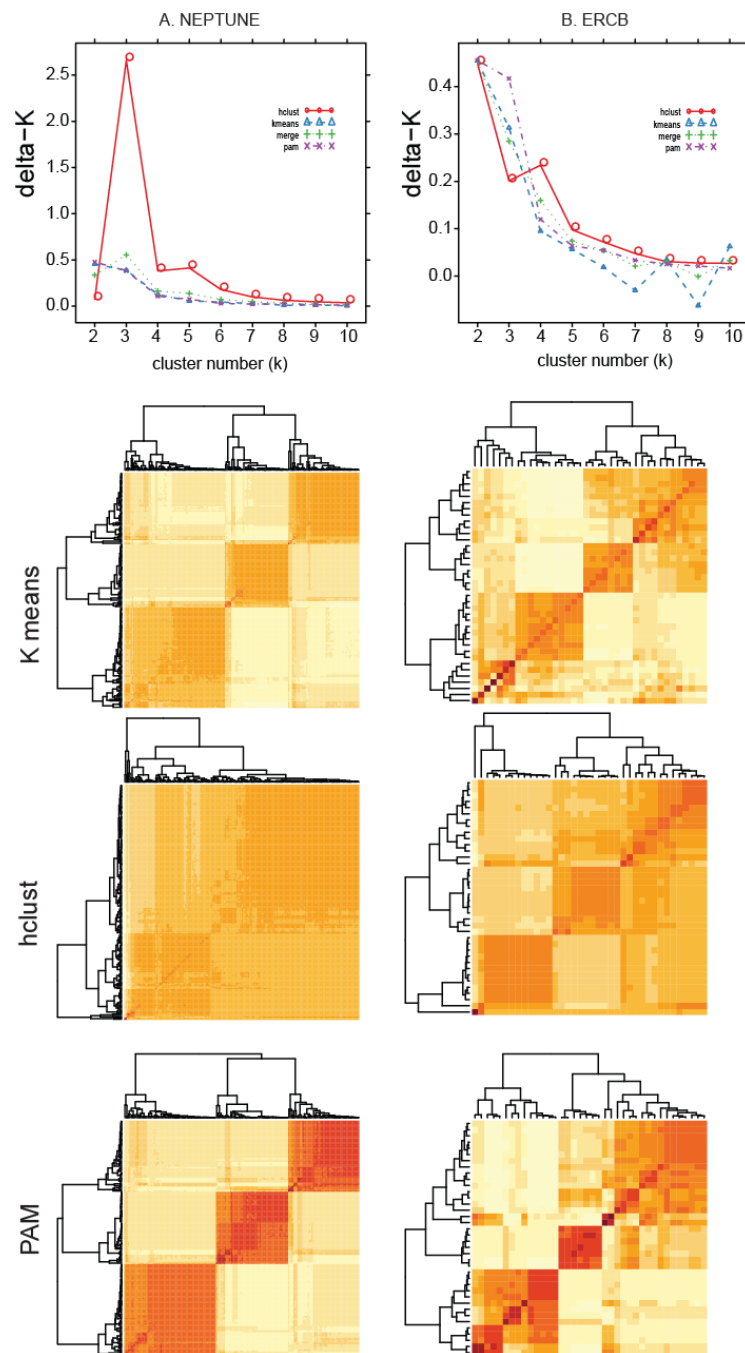
D.



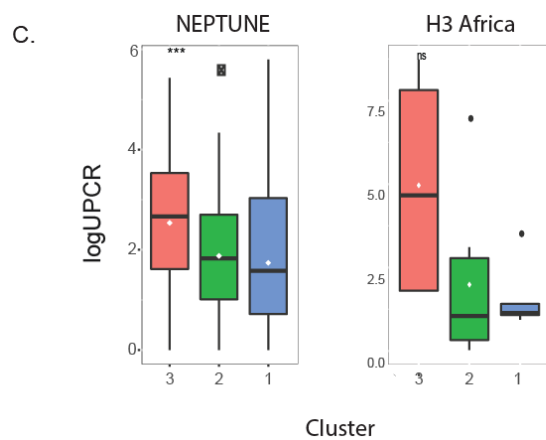
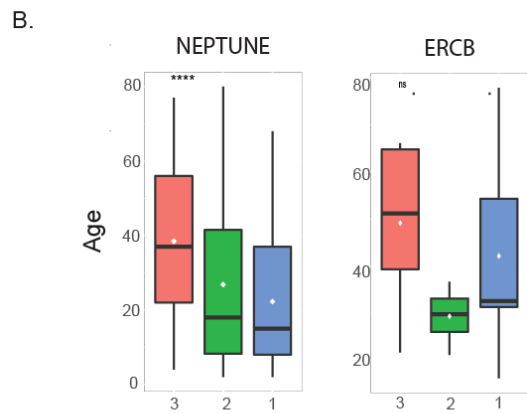
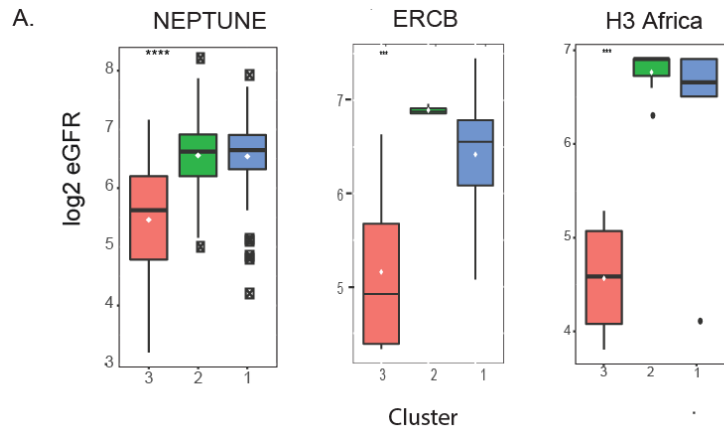
E.



Supplementary Figure S2 Optimal cluster determination and similarity matrices using different clustering algorithms from transcriptomic profiles of MCD and FSGS participants based on kidney biopsy glomerular gene expression data in NEPTUNE (A), and ERCB (B).



Supplementary Figure S3. Clinical information by cluster for eGFR (A), Age (B), and UPCR (C) across the cohorts analyzed.



Supplementary Table S1. Biological upstream regulators from the differential expression profile in each cohort were extracted from Ingenuity Pathways Analysis and ranked according to enrichment p-value for each upstream regulator in a given cohort. Upstream regulators were aggregated and the average rank and activation score was calculated. The top 15 regulators by average rank are shown.

Upstream Regulator	Molecule Type	Average Rank	Average Activation Z-score
TNF	cytokine	1.3	11.03
IFNG	cytokine	2.0	9.58
TGFB1	growth factor	4.3	7.33
IL6	cytokine	4.7	6.49
IL1B	cytokine	6.7	8.84
STAT3	transcription regulator	11.7	5.55
SMARCA4	transcription regulator	12.7	6.75
KRAS	enzyme	14.7	-1.50
Immunoglobulin	complex	15.0	-0.80
IL4	cytokine	15.3	3.68
OSM	cytokine	16.0	7.07
NFkB (complex)	complex	17.7	8.42
STAT1	transcription regulator	18.0	6.71
ERBB2	kinase	21.0	4.26
TP53	transcription regulator	22.0	3.92

Supplementary Table S2. Genes and gene products activated by TNF used to generate the TNF activation score.

Gene	PMID	Gene	PMID	Gene	PMID	Gene	PMID	Gene	PMID	Gene	PMID	Gene	PMID
CCL17	12354417	CHUK	11796489	EMCN	11594763	ICAM1	15963988	ITGB2	12454401	OLR1	11985903	SYTL1	12137562
CCL19	10679062	COX2	10501211	ENG	17389265	ICOSLG	10744980	JUN	17500068	OPTN	10807909	TAP1	1385520
CCL2	9825772	CPNE1	14674885	EPCAM	10867614	IER3	11244505	JUNB	10903323	ORM1	9726030	TFRC	9135559
CCL20	11133838	CR1	2961377	ESAM	15505101	IGFBP1	10070049	KIT	10206577	OSM	12097485	TGFB1	15574511
CCL22	11923841	CRH	12676571	ETS1	11229456	IGFBP3	11971816	KITLG	15579452	PAPPA	16269458	THBS1	11157717
CCL27	11821900	CRHR2	17412781	F3	11058594	IGFBP6	12054123	LAMP3	15963988	PECAMI	7686548	TIMP1	15663564
CCL3	12115625	CRP	9726030	FABP2	11329616	IKKBK	11796489	LEP	12032749	PLA2G4A	10930295	TIMP2	15663564
CCL4	9570566	CSF1	3494061	FABP4	12927809	IL10	12414777	LIF	8895217	PLAT	12692009	TLR2	11160251
CCL5	9277410	CSF2	12562880	FANCG	11181053	IL11	10467228	MADCAM1	15483224	PLAU	8601416	TLR4	11160251
CCND1	12444159	CSF3	1700731	FAS	8168998	IL12B	10513808	MAP2K6	9029150	PLAUR	8601416	TNF	16365392
CCR1	9787141	CTSG	11722574	FASLG	10358159	IL13RA2	14652008	MAP3K14	11368442	PLD1	11485559	TNFAIP3	12388275
CCR3	11884459	CX3CL1	11525637	FCER2	7643018	IL15RA	12165497	MAP4K4	16461467	POSTN	15378733	TNFRSF11B	11685652
CCR4	9787141	CXADR	12571626	FGF2	10629075	IL1A	7686496	MEFV	10807793	PRTN3	11415941	TNFRSF1A	11923841
CCR5	9787141	CXCL1	12744776	FGF7	7936642	IL1B	7994029	MIPEP	1372592	PTGES	11029586	TNFRSF1B	12067756
CCR7	15963988	CXCL10	11884459	FOS	3259871	IL1R1	8120407	MMP1	12060661	PTGS2	12576525	TNFRSF21	11753679
CCRL2	15188357	CXCL11	12627325	GADD45B	12388275	IL1RN	8331299	MMP10	8349617	PTHLH	10854575	TNFRSF8	12414777
CD14	1373513	CXCL2	10502561	GDF15	9886240	IL2	12414777	MMP12	17525194	PTPRF	10905491	TNFSF10	12218071
CD1A	11238627	CXCL3	9277410	GFAP	10674496	IL21R	11986233	MMP13	12878172	PTX3	9521058	TNFSF11	15479886
CD4	1921451	CXCL5	9277410	GJA1	12827213	IL2RA	12414777	MMP14	9212749	RB1	15611081	TNFSF15	11911831
CD40	11488834	CXCL6	12744776	GNAI3	12214898	IL3RA	1825289	MMP17	12962706	RELA	9756499	TNIP2	15378733
CD55	10477692	CXCL8	9209275	GPNMB	19320736	IL6	10467228	MMP2	25358651	RPS6KA5	9873047	TP53	10213465
CD58	1354203	CXCL9	12627325	GRIA1	12460558	IL6R	11923841	MMP3	10967046	S100A11	16339570	TRAF1	11978013
CD70	9067541	CXCR4	11160334	GSS	15378733	IL7	10961889	MMP7	9461124	SAA1	1714101	TRAF2	12067756
CD80	9824486	CYCS	12149248	HBEGF	12138120	IL7R	10779425	MMP9	25358651	SELE	8695814	TRAF3	12067756
CD83	15963988	CYLD	18245814	HCK	12237848	INHBA	1417851	MUC1	10867614	SELL	12517920	TRAF4	12067756
CD86	12230943	CYP19A1	12452446	HGF	9397161	IRF1	12713595	MUC5AC	12690113	SELP	10484438	TRAF5	12067756
CDK3	15378733	DDR1	11606478	HIF1A	12808024	ITGA1	12606473	MYC	10200535	SERPINA3	9461605	TRAF6	12067756
CDK4	15611081	DEFB4A	11702237	HLA-A	1354203	ITGA4	12759453	MYLK	15681825	SERPINB2	8824249	TRPC1	12855710
CDKN1A	12795334	DUSP10	24707477	HLA-B	3455781	ITGA5	8006453	NAMPT	11241162	SERPINE1	11402043	TXN	10555039
CEBPA	10211885	E2F1	15611081	HLA-C	1354203	ITGA6	8006453	NFKB1	9756499	SLC11A2	16224057	TYMP	14573775
CFB	7512988	EDN1	10764953	HMOX1	10330231	ITGAL	10198263	NFKB2	9529131	SLC3A2	2318252	VCAM1	10484438
CFH	1690734	EFNA1	11278471	HP	9097927	ITGAM	12747235	NFKBIA	12580918	SLC7A2	11742806	WNT5A	12165812
CFLAR	12861043	EGFR	10077640	HPSE	16384929	ITGAX	1921451	NLRP3	14662828	SMAD7	10652273	XIAP	16219905
CHRM2	15671275	EGR1	1370482	HSP90B1	15378733	ITGB1	9565575	NOS2	10601128	SOD2	9114748	ZFP36	10763822

Supplementary Table S3. Clinical characteristics of patients with kidney biopsies profiled by snRNAseq

	TNF High (N = 5)	TNF Low (N = 5)
Age mean (sd)	44.6 (22.6)	20.8 (17.4)
Sex (male:female)	2:3	3:2
eGFR mean (sd)	44.26 (22.47)	115.53 (44.01)
UPCR median (IQR)	5.05 (3.62, 5.8)	0.96 (0.86, 1.03)
FSGS	4	4
Cluster 3	5	0
TNF Score mean (sd)	0.13 (0.02)	0.081 (0.01)