

1 **Wastewater-Based Epidemiology and Whole-Genome Sequencing for Community-**  
2 **Level Surveillance of SARS-CoV-2 in Selected Urban Communities of Davao City,**  
3 **Philippines: A Pilot Study**

4 Maria Catherine B. Otero<sup>1,2</sup>, Lyre Anni E. Murao<sup>3,4</sup>, Mary Antoinette G. Limen<sup>5</sup>, Paul  
5 Lorenzo A. Gaité<sup>4</sup>, Michael G. Bacus<sup>4</sup>, Joan T. Acaso<sup>3,4</sup>, Kahlil Corazo<sup>6</sup>, Ineke E. Knot<sup>6,7</sup>,  
6 Homer Sajonia II<sup>6</sup>, Francis L. de los Reyes III<sup>8</sup>, Caroline Marie B. Jaraula<sup>5</sup>, Emmanuel S.  
7 Baja<sup>1,9</sup>, and Dann Marie N. Del Mundo<sup>10\*</sup>

8 1 Department of Clinical Epidemiology, College of Medicine, University of the Philippines  
9 Manila, Ermita, Manila 1000 Philippines

10 2 College of Medicine Research Center, Davao Medical School Foundation, Inc., Bajada,  
11 Davao City 8000 Philippines

12 3 Department of Biological Sciences and Environmental Studies, University of the  
13 Philippines-Mindanao, Mintal, Davao City 8022 Philippines

14 4 Philippine Genome Center Mindanao, University of the Philippines-Mindanao, Mintal,  
15 Davao City 8022 Philippines

16 5 Marine Science Institute, University of the Philippines-Diliman, Diliman, Quezon City  
17 1101 Philippines

18 6 Project Accessible Genomics, [accessiblegenomics.org](http://accessiblegenomics.org)

19 7 Institute of Biodiversity and Ecosystem Dynamics, University of Amsterdam,  
20 Amsterdam, Netherlands

21 8 Department of Civil, Construction, and Environmental Engineering, North Carolina State  
22 University, Raleigh, North Carolina, United States of America

23 9 Exposure Assessment, Epidemiology, and Risk Lab, Institute of Clinical Epidemiology,  
24 National Institutes of Health, University of the Philippines-Manila, Ermita, Manila 1000  
25 Philippines

26 10 Department of Food Science and Chemistry, University of the Philippines-Mindanao,  
27 Mintal, Davao City 8022 Philippines

28

29 \*Corresponding Author:

30 Dann Marie N. Del Mundo

31 Department of Food Science and Chemistry, University of the Philippines-Mindanao,  
32 Mintal, Davao City 8022 Philippines

33 [ndelmundo1@up.edu.ph](mailto:ndelmundo1@up.edu.ph)

34

35

36

37

38

39 **ABSTRACT AND KEYWORDS**

40

41 **Background:** Over 50 countries have used Wastewater-Based Epidemiology (WBE) and  
42 Whole-Genome Sequencing (WGS) of SARS-CoV-2 for monitoring COVID-19 cases.  
43 COVID-19 surveillance in the Philippines relies on clinical monitoring and contact tracing,  
44 with both having limited use in early detection or prediction of community outbreaks.  
45 Thus, complementary public health surveillance methods that can provide community-  
46 level infection data faster and using lesser resources must be explored.

47 **Objectives:** This study piloted and assessed WBE and WGS as approaches for COVID-  
48 19 surveillance in low-resource and low-sanitation communities in Davao City,  
49 Philippines.

50 **Methods:** Weekly wastewater samples were collected from six barangay community  
51 sewer pipes or creeks from November to December 2020. Samples were concentrated  
52 using a PEG-NaCl precipitation method and analyzed by RT-PCR to detect the SARS-  
53 CoV-2 N, RdRP, and E genes. In addition, SARS-CoV-2 RNA-positive samples were  
54 subjected to WGS for genomic mutation surveillance. Public data from clinical  
55 surveillance were also reviewed to interpret WBE data.

56 **Results:** Twenty-two of the 24 samples (91.7%) obtained from the six barangays tested  
57 positive for SARS-CoV-2 RNA. The cycle threshold (Ct) values were correlated with RNA  
58 concentration and attack rate. Thirty-two SARS-CoV-2 mutations were detected in WGS,  
59 including novel non-synonymous mutations or indels in seven SARS-CoV-2 genes and  
60 ten mutations previously reported in the Philippines.

61 **Discussion:** SARS-CoV-2 RNA was detected in community wastewater from the six  
62 barangays of Davao City, even when the barangays were classified as having a low risk  
63 of COVID-19 transmission and no new cases were reported. Despite the fragmented

64 genome sequences analyzed, our genomic surveillance in wastewater confirmed the  
65 presence of previously reported mutations while identifying mutations not yet registered in  
66 clinical surveillance. The local context of a community must be considered when planning  
67 to adopt WBE and WGS as complementary COVID-19 surveillance methodologies,  
68 especially in low-sanitation and low-resource settings.

69

70 Keywords: COVID-19, Philippines, SARS-CoV-2, Wastewater-Based Epidemiology,  
71 Whole Genome Sequencing.

72

73

74

75

76

## 77 INTRODUCTION

78 Following the World Health Organization declaration of a global pandemic in March 2020,  
79 public health surveillance systems at the national and local levels were immediately  
80 instituted to reduce the transmission of COVID-19. Surveillance aims to rapidly detect,  
81 isolate, and manage cases and their contacts, guide control measures, and monitor  
82 epidemiologic trends and evolution of SARS-CoV-2 (World Health Organization, 2020). In  
83 the Philippines, COVID-19 surveillance relies heavily on RT-PCR-based clinical  
84 diagnostics in symptomatic individuals and their contacts. However, clinical monitoring  
85 and contact tracing have limited use in the early detection or prediction of community  
86 outbreaks and can be logistically demanding when applied to a large population (Sims  
87 and Kasprzyk-Horden, 2020; Nsubuga et al., 2006). When interventions aim to curb  
88 transmission from patients with no symptoms or with a mild infection, complementary  
89 public health surveillance methods that can provide faster results of community-level  
90 infection data using lesser resources must be explored.

91 SARS-CoV-2 is shed in the feces of symptomatic and asymptomatic COVID-19 cases  
92 (Chen et al., 2020; Park et al., 2020; Schmitz et al., 2021 PREPRINT ). Over 50 countries  
93 have utilized sewage wastewater monitoring for COVID-19, whether in national or  
94 regional scale, or in localized sites (Naughton et al., 2021 PREPRINT). Studies from the  
95 Netherlands and the USA showed that wastewater-based epidemiology (WBE), or  
96 wastewater-based surveillance, can detect and predict hotspots of COVID-19 infections  
97 earlier than clinical surveillance (Wu et al., 2020; Wurtzer et al., 2020). Larsen and  
98 Wigginton (2020) further projected that WBE could give a 7-day lead over COVID-19 case  
99 reporting in symptomatic or clinical surveillance. Thus, WBE can serve as an early  
100 warning tool that can help control the spread of COVID-19, especially in areas where

101 diagnostic resources are limited (Bivins et al., 2020). WBE can also be utilized in  
102 assessing control strategies against COVID-19 at the community level. SARS-CoV-2 viral  
103 titers in WBE declined in response to social isolation and lockdowns in Montana, USA  
104 (Nemudryi et al., 2020), Paris, France (Wurtzer et al., 2020 PREPRINT), and Rio de  
105 Janeiro, Brazil (Prado et al., 2021). In Brazil (Prado et al., 2021) and Singapore (Wong et  
106 al., 2021), WBE data from samples from sewer pipes were used to determine where  
107 public health interventions should be intensified. Circulating variants and strains of SARS-  
108 CoV-2 were identified in wastewater using whole-genome sequencing (WGS), supporting  
109 the use of wastewater surveillance for tracing variant importations and circulation (Martin  
110 et al., 2020; Crits-Christoph et al., 2021; Napit et al., 2021 PREPRINT).

111 Davao City is the third most populous Highly Urbanized City (HUC) in the Philippines, with  
112 1.8 million inhabitants. It is considered as the gateway for trade in the Southern  
113 Philippines (PSA, 2019). There were 8,808 confirmed cases of COVID-19 in Davao City  
114 at the end of 2020, coming from 178 of its 182 *barangays* (or smallest administrative  
115 division). Like many cities in the Philippines, Davao City does not have a centralized  
116 wastewater management system. As a result, inadequately treated domestic wastewater  
117 and sewage from private and communal septic tanks may be released to rivers and  
118 creeks along with surface run-off (Guerrero-Latorre et al., 2020; JICA, 2018). COVID-19  
119 WBE in low-sanitation settings in Ecuador (Guerrero-Latorre et al., 2020) and portions of  
120 Brazil (Prado et al. 2020) demonstrated how data from WBE could be used in designing  
121 public health interventions and monitoring COVID-19 transmission.

122 This study piloted and assessed WBE and WGS as methodologies for COVID-19  
123 surveillance in low-resource and low-sanitation communities in Davao City, Philippines. It

124 also identified the challenges in conducting wastewater-based surveillance in low-  
125 resource and low-sanitation communities.

126

127

## 128 **METHODS**

### 129 ***Study Site***

130 This descriptive pilot study was implemented in Davao City, a chartered city in the Davao  
131 Region, the southern portion of the Philippines (Figure 1). The City Government of Davao  
132 City releases weekly COVID-19 transmission risk categories (CRITICAL, HIGH,  
133 MODERATE, or LOW) for its 182 *barangays*. These weekly characterizations are based  
134 on new and active cases normalized against Weekly or Average Daily Attack Rate  
135 (ADAR) and the 2-week Growth Rate (2WGR) for COVID-19 (City Government of Davao,  
136 2021).

137 Guided by this weekly COVID-19 Risk Assessment *Barangay* Classification and the  
138 expert advice of the City Health Office, six communities with HIGH to MODERATE risk of  
139 COVID-19 transmission were identified for sampling (Figure 1). One wastewater sampling  
140 site within each *barangay* was determined with the help of the *barangay* personnel.  
141 Accessibility and presence of a continuous flow of wastewater were considered in  
142 choosing the site. In addition, two tertiary-level hospitals were also included as reference  
143 sites. The study protocol was reviewed and approved by an independent Research Ethics  
144 Board (BMH-REC Code # 2020-08-02).

### 145 ***Review of Secondary Data***

146 The communities under each *barangay*, the estimated population as of 2020, and their  
147 land area were obtained from the involved *barangays* and the City Planning and

148 Development Office (CPDO) of the City Government of Davao. In addition, clinical  
149 surveillance data for COVID-19 was constructed from the publicly available daily list of  
150 new cases released by the Department of Health Davao Region (2021). Moreover, new  
151 and active cases (defined as new cases in the preceding two weeks) and cumulative  
152 incidence per 1,000 persons were computed based on the constructed database.

### 153 ***Sample collection and processing***

154 Wastewater was collected from the sewer pipes in [1] 23-C, [2] 76-A Bucana, [3] Matina  
155 Crossing, and [4] Leon Garcia Sr., and from the creeks in [5] Mintal and [6] Tomas  
156 Monteverde between 8 AM to 3 PM once weekly for four weeks from November 8 to  
157 December 12, 2020. Weekly sampling was divided into two days, and *barangay*  
158 wastewater target sites in close proximity were sampled on the same day. Two hundred  
159 fifty milliliters of grab wastewater samples from each site were placed in sterile high-  
160 density polyethylene (HDPE) bottles, transported on ice to the College of Science and  
161 Mathematics, University of the Philippines Mindanao, and processed in a Biosafety Level  
162 2 laboratory within four hours of collection.

163 The methods for processing wastewater samples were modified from Wu et al. (2020).  
164 Briefly, wastewater samples were sonicated at 20kHz without pulse for two mins.  
165 Samples were centrifuged at 4,700xg for 30 mins without brake to remove large particles.  
166 The supernatant was decanted and then passed through a 0.22  $\mu\text{m}$  polyethersulfone  
167 (PES) syringe filter. Polyethylene glycol (PEG 8000) and NaCl were then added to the  
168 filtrate to a final concentration of 8% w/v PEG and 0.3M NaCl. After vigorous agitation, the  
169 tubes were kept at 4°C for 20 hours and then centrifuged at 10,000xg for 90 mins until a  
170 visible pellet formed. The viral pellet was then reconstituted with 100uL DNA/RNA Shield  
171 (Zymo Research, USA) and stored at -20°C until RNA extraction.



172

### 173 **RNA Extraction and RT-PCR analysis**

174 Viral RNA was extracted from 100 $\mu$ L resuspended viral pellets using the MagMax  
175 Viral/Pathogen Nucleic Acid Isolation Kit (Thermo Fisher Scientific Inc., USA) in a  
176 Kingfisher Duo Prime Purification System (Thermo Fisher Scientific Inc., USA). RT-PCR  
177 detection of SARS-CoV-2 was performed using the Allplex<sup>TM</sup> 2019-nCoV Assay (Seegene  
178 Inc., South Korea), which targets the RdRP, N, and E genes. Five microliters each of the  
179 2019-nCoV MOM, RNase-free water, and 5x real-time one-step buffer, 2 $\mu$ L of real-time  
180 one-step enzyme, and 8 $\mu$ L of RNA sample or controls (non-template control and positive  
181 control) were added for a total qPCR reaction of 25 $\mu$ L. Thermal cycling was set at 50°C  
182 for 20 min for reverse transcription, 95°C for 15 min, and then 45 cycles of 94°C for 15s,  
183 and 58°C for 30s using the Applied Biosystems QuantStudio 5 real-time PCR machine  
184 (Thermo Fisher Scientific Inc., USA). The cut-off cycle threshold (Ct) for Allplex<sup>TM</sup> 2019-  
185 nCoV Assay was set at 40 cycles. Samples were considered POSITIVE for SARS-CoV-2  
186 RNA when all three targets were amplified, OR when either N or RdRP genes, OR both N  
187 and RdRP genes were amplified with Ct below or equal to 40, as recommended by the  
188 manufacturers in the analysis and interpretation of the Allplex<sup>TM</sup> 2019-nCoV Assay.  
189 However, if only the E gene was amplified, the sample was considered NEGATIVE for  
190 SARS-CoV-2 RNA. Linear regression analysis using the IBM SPSS Software (version 21)  
191 was used to assess if the Ct of the E, N, and RdRP genes were correlated with the RNA  
192 concentration and the computed weekly Attack Rate.

### 193 ***Whole Genome Sequencing***

194 Eleven (11) wastewater samples that were positive for all targets (RdRP, N, and E genes)  
195 and with Ct values ranging from 29 to 39 were chosen for WGS (Supplemental Material,

196 Sample details). SARS-CoV2 amplicon enrichment was performed using the NEBNext  
197 SARS-CoV2 companion kit (New England BioLabs, USA) using the IDT 2019-nCoV v3  
198 panel. PCR products for each sample, including a negative control, were diluted to 50µL  
199 using 9.5µL of cDNA from each of the two separate primer pool reactions and 31µL  
200 nuclease-free water. A total of 5µL PCR dilution per sample was subjected to  
201 downstream processing consisting of a DNA end-repair step, barcode ligation, adapter  
202 ligation, and library clean-up following the published ARTIC nCoV-2019 sequencing  
203 protocol (LoCost) v3 (Quick, 2020). Sequencing using a FLO-MIN106 flow cell on the  
204 MinION Mk1B device (Oxford Nanopore Technologies, United Kingdom) was allowed to  
205 run for approximately 24 hours.

206

### 207 ***Bioinformatic Analysis***

208 Bioinformatic analysis was performed following the nCoV-2019 novel coronavirus  
209 bioinformatics protocol by the ARTIC Network (Loman et al., 2020), with several  
210 modifications made according to the actual experimental conditions. Briefly, MinKNOW  
211 software was used to generate raw sequencing read files in FAST5 file format. The  
212 generated FAST5 files were subsequently base called and converted to FASTQ files  
213 using the guppy\_basecaller software (v.9.4.1) set to high-accuracy mode basecalling. The  
214 basecalled reads were then demultiplexed into their corresponding barcodes with the  
215 guppy\_barcode software. All barcoded reads were subjected to read filtering through the  
216 ARTIC guppyplex tool, retaining reads that are 400 (approximate amplicon size) to 600  
217 bases in length. The remaining reads were then subjected to the medaka pipeline (set to  
218 v.9.4.1 as this is the version of the guppy\_basecaller used) set to use the ARTIC Protocol  
219 V3 primer set, which generated the assembled consensus sequences and performed  
220 variant calling. All consensus sequences were submitted to the CoV-GLUE online server

221 bioinformatics tool for corresponding lineage assignment and identification of viral  
222 mutations using the SARS-CoV-2 isolate (Wuhan-Hu-1) complete genome (GenBank  
223 Accession ID: MN908947.3) as the reference sequence (Singer *et al.*, 2020). As the  
224 genome assemblies in this study were incomplete and highly fragmented due to the  
225 presence of many N base calls and hence sequence gaps, the threshold for variant  
226 calling was performed with a total of 30x coverage (Izquierdo-Lara *et al.*, 2021) on a  
227 specific base across all assembled consensus sequences to ensure high-quality variant  
228 calls.

229

## 230 **RESULTS**

231

### 232 ***Site characteristics***

233 The largest *barangay* by land area is Mintal (7.68 sq. km), and the smallest is 23-C (0.2  
234 sq. km). However, the population density was highest in 23-C with 94,111 persons/sq km,  
235 and lowest in Mintal with 1,929 persons/sq km (Table 1). Community wastewaters  
236 included in this study converged in *barangay* sewer lines that drained either to a river  
237 (Talomo River, Matina River, and Davao River) or to the Davao Gulf (Figure 1).

238 Except for Leon Garcia Sr., all *barangays* were at a high-risk level of COVID-19  
239 transmission at least once during the study period (Figure 2). In addition, the following  
240 *barangay*, 23-C, Leon Garcia Sr., Tomas Monteverde, and Mintal were categorized as  
241 low-risk *barangays* during one of the four weeks of wastewater testing (Figure 2A, C, E,  
242 and F). None of the *barangays* were categorized as very high or critical risk during the  
243 entire wastewater sampling. Moreover, no risk assessment was declared for the week of  
244 Nov 15 to 21, 2020.

245 Four hundred fifty new and 599 active cases were reported in the six *barangays* during  
246 the wastewater testing period (Table 1). These cases cover only 14% of the new COVID-  
247 19 cases and 14% of the active COVID-19 cases reported in the entire Davao City for the  
248 same period. Over 44% of the new cases in the six *barangays* occurred in 76-A Bucana.  
249 In addition, the weekly number of new and active cases was consistently higher for 76-A  
250 Bucana and Matina Crossing relative to the other *barangays* (Table 1 and Figure 2). The  
251 weekly attack rates ranged from 5 to 127 new cases per 100,000 persons, with the  
252 highest attack rate recorded in Tomas Monteverde on November 22 to 28 (Figure 2).

### 253 ***SARS-CoV-2 Detection in Wastewater***

254 Twenty-two out of the 24 (91.7%) samples obtained from the six *barangays* over the four-  
255 week course of the study tested positive for SARS-CoV-2, with RNA concentrations  
256 ranging from 7.8 to 40.2 ng/uL (Supplemental Material, Sample details) and Ct values  
257 ranging from 29.41 to 39.73 (Table 2). Moreover, the detection rate for the individual  
258 genes was highest for RdRP at 87.5%, followed by N at 83.3% and E at 62.5%. However,  
259 no SARS-CoV-2 genes were detected in 23-C and Mintal samples with low recovered  
260 RNA levels of 7.8 ng/uL RNA and 10.6 ng/uL RNA, respectively, during the week of  
261 November 22 to 28, 2020. In addition, SARS-CoV-2 RNA was also detected in all  
262 untreated wastewater samples from the two reference tertiary level hospitals in Davao  
263 City, with Ct values ranging from 30.95 to 39.01 (Table 2).

### 264 ***Epidemiologic Assessment of SARS-CoV-2 Wastewater Surveillance***

265 SARS- COV-2 RNA was detected in all sites in at least three out of four sampling points  
266 between November and December 2020, regardless of the *Barangay* Risk Category and  
267 even for *barangays* with a weekly attack rate as low as one new case per 10,000  
268 population (Figure 2). Notably, SARS-CoV-2 RNA was detected in 23-C and Monteverde

269 for the week of December 5-12, even when no new cases were reported for the  
270 corresponding week (Figure 2A and E). However, SARS-CoV-2 RNA was not detected  
271 even if new cases were reported in 23-C for November 22-28 with a weekly attack rate of  
272 22 per 100,000 persons and in Mintal for November 15-21 with a weekly attack rate of 47  
273 per 100,000 persons (Figure 2A and F). Furthermore, the Ct for the E and N genes was  
274 negatively correlated with RNA concentration and attack rate (p-values < 0.05). However,  
275 the Ct value RdRP gene was only associated with the changes in the attack rate (p-value  
276 0.04, Supplemental Material, regression analyses per gene target).

### 277 ***SARS-CoV-2 Sequencing in Wastewater***

278 Whole-genome sequence data from SARS-CoV-2-positive wastewater samples showed  
279 that genome coverage varied widely among samples. The November 9 sample from  
280 Matina Crossing had ~50% genome fraction coverage. All other samples had a range of  
281 1.16% - 20.37% genome fraction coverage, indicating incomplete and highly fragmented  
282 assembled genomes. CoV-GLUE analyses of the assembled consensus genome  
283 sequences assigned these sequences to differing lineages, such as B.1, B.1.1, and B.6  
284 (Supplemental Material, genome assembly and analyses). However, the likelihood weight  
285 ratio values for these lineage assignments ranged from 59.375 - 100, with five samples  
286 having values below 75, most likely due to the highly fragmented nature of the assembled  
287 genomes.

288 CoV-GLUE detected a total of 32 mutations among all assembled consensus sequences,  
289 nine of which were synonymous, 17 were non-synonymous, five were indels, and one  
290 was located in a non-coding region (Table 3). Most of the mutations were detected in only  
291 one sample, a few in two samples, and one in six samples. Ten of these mutations have  
292 already been previously reported, but novel non-synonymous mutations or indels in the

293 coding regions of nsp3, nsp6, RdRp, ORF3, ORF6, ORF7A, and ORF8 were also noted.  
294 Among the known mutations in the spike gene for SARS-CoV-2 Variants of Concern  
295 (VOCs) and the Philippine P3 variant, only D614G was detected (Table 3 and  
296 Supplemental Material, gene mutations). The S94F, 141-143del, P681H/R, K417N/T,  
297 E1092K, and H1101Y mutations were absent among samples whose sequence data  
298 covered these regions. The other mutations were not covered in the sequence data.

299

300

## 301 **DISCUSSION**

302 Wastewater-based surveillance of SARS-CoV-2 has been proven to be a useful  
303 surveillance tool for COVID-19 (Daughton, 2020). In addition, WBE can support clinical  
304 surveillance by detecting pre-symptomatic and asymptomatic COVID-19 cases  
305 (Wannigama et al., 2021). It is also an additional indicator for COVID-19 prevalence  
306 trends in the sampled neighborhood or community (Peccia et al., 2020).

307 In this study, SARS-CoV-2 was detected in the wastewaters of *barangays* from Davao  
308 City, Philippines, regardless of the COVID-19 transmission risk category of the *barangays*  
309 or presence or absence of reported cases. The weekly *barangay-level* COVID-19  
310 transmission risk classification released by the City Government of Davao City is based  
311 on ADAR and 2WGR. Weekly attack rates from October to December 2020 in the  
312 involved *barangays* in this study correlated with SARS-CoV-2 Ct values. However, in our  
313 study, no striking temporal pattern was observed. Furthermore, WBE detected SARS-  
314 CoV-2 RNA in *barangays* even when the attack rate was low (one new case per 10,000  
315 persons). SARS-CoV-2 RNA was also detected in two of the most densely populated  
316 *barangays* included in this study, even when no new cases were reported for the  
317 corresponding week. Wannigama et al. (2021) reported a similar result in Thailand, where

318 SARS-CoV-2 genome copies were detected in wastewater from Bangkok's City Center  
319 and neighboring suburbs even when cumulative cases were zero from July 2020 to  
320 November 2020. Trottier et al. (2020) also did not observe a temporal correlation between  
321 the SARS-CoV-2 genome copies in wastewater and the COVID-19 incidence in  
322 Montpellier, France, as high levels of average SARS-CoV-2 genome copies were  
323 detected weeks before the COVID-19 cases increased in July 2020. This finding is  
324 possible because of fecal shedding in asymptomatic and pre-symptomatic COVID-19  
325 cases, the variable amount of shed SARS-CoV-2 among infected persons (Trottier et al.  
326 2020; Wannigama et al. 2021), or differences in testing coverage in the community. Since  
327 all active cases of COVID-19 in Davao City are immediately taken to one of the eleven  
328 Temporary Treatment and Monitoring Facilities (TTMFs) shortly after testing positive via  
329 RT-PCR (City Government of Davao, 2020), we hypothesize that the SARS-CoV-2 RNA  
330 detected in the community wastewater may come from either pre-symptomatic, or  
331 asymptomatic cases, or symptomatic individuals who did not self-report to their local  
332 health monitoring unit.

333 Over 70% of confirmed COVID-19 active cases in Davao City by the end of 2020 were  
334 asymptomatic cases (DOH Davao Region, 2021). This can be attributable to aggressive  
335 active-case finding, intensified contact tracing, and free community testing via RT-PCR in  
336 the City, whereby even asymptomatic contacts of confirmed COVID-19 cases are tested  
337 and required to self-isolate (City Government of Davao, 2021). In cities or municipalities  
338 where clinical testing capacity and healthcare resources are low, both symptomatic and  
339 asymptomatic COVID-19 infections may be missed by clinical diagnostics (testing via RT-  
340 PCR). Even without testing resource limitations, COVID-19 infections in patients who  
341 purposely do not report having symptoms, and hence, do not get tested for COVID-19

342 because of fear of social stigma (Michael-Kordatou et al., 2020), or isolation and  
343 quarantine (Larsen and Wigginton, 2020) will not be captured by clinical surveillance and  
344 contact tracing. Wastewater-based epidemiology offers a complementary public health  
345 surveillance method that provides community infection data faster using less resources  
346 than individual RT-PCR testing (Daughton, 2020). With long-term periodic community  
347 wastewater testing for SARS-CoV-2, WBE can present an unbiased snapshot of COVID-  
348 19 cases at the community level, whether asymptomatic, pre-symptomatic, or  
349 symptomatic (Wu et al., 2020). WBE can also be useful in suburban and rural  
350 communities, especially in low-resource settings, where people may have limited access  
351 to healthcare (Larsen and Wigginton, 2020).

352 Genomic surveillance in wastewater was attempted in this pilot work, and an average  
353 read depth of genome coverage was calculated to be ~20x, which indicates that SARS-  
354 CoV-2 genomes were indeed sequenced reasonably and accurately (Goldman and  
355 Domschke, 2014). However, fragmented genomes were generated probably due to 1) the  
356 problematic nature of the sample, which may have been composed of degraded viral  
357 genetic material, and 2) the high Ct values (above 30) of the samples, which is known to  
358 be technically challenging for whole genome sequencing (Crits-Christoph *et al.*, 2020).  
359 Nevertheless, we analyzed the sequence data as an exploratory frame of reference for  
360 future investigations. Furthermore, to ensure high-quality analysis despite the fragmented  
361 sequences, the threshold for variant calling was performed with a total of 30x coverage  
362 (Izquierdo-Lara *et al.*, 2021).

363 Our wastewater surveillance in Davao City detected SARS-CoV-2 non-synonymous  
364 mutations which have been previously reported in the Philippines: [1] the nsp3 T2016K,  
365 RdRp A97V, and nucleoprotein P13L, which were first detected in March 2020 (Tablizo *et*



366 *al.*, 2020); [2] the nucleoprotein R203K and G204R, which were first detected in January  
367 2021 (Tablizo *et al.*, 2021); and [3] the spike D614G which has become globally dominant  
368 early in the pandemic (Korber *et al.*, 2020). In addition, other mutations reported in other  
369 countries (nsp2 P129S, RdRp A449V, and 120/121FI→ LFS) (Sengupta *et al.*, 2020,  
370 Wang *et al.*, 2020, Zinzula *et al.*, 2021) were also detected in this study.

371 We also detected mutations that were not yet reported by clinical surveillance. One of  
372 these mutations is the V117I non-synonymous mutation at ORF8 represented in two  
373 samples (total of 476 observations). ORF8 is an accessory protein for viral capsid  
374 formation and is also implicated in the host immune response towards SARS-CoV-2  
375 (Santerre *et al.*, 2020; Zinzula, 2021). Another mutation of interest is the deletion at  
376 position 11083 located in the nsp6 gene region which is represented in two samples (total  
377 of 605 observations). Previous publications in the Philippines and elsewhere (Tablizo *et*  
378 *al.*, 2020; Aiewsakun *et al.*, 2020; Chaw *et al.*, 2020) have reported a non-synonymous  
379 mutation at this position, but not the observed deletion in this study. The viral protein  
380 encoded by nsp6 assists in the formation of vesicles for viral replication (Santerre *et al.*,  
381 2020). Other previously unreported non-synonymous mutations and indels were detected  
382 in only one site, such as for the vesicle-forming nsp3 and nsp6, the polymerase RdRp,  
383 and the accessory proteins ORF3, ORF6, and ORF7a.

384 Except for the D614G mutation, there was a notable absence of mutations within the  
385 spike gene, previously noted for VOCs and the Philippine P3 variant. Unfortunately, most  
386 of the regions covered by these mutations were not successfully sequenced, thereby  
387 preventing any conclusion from being made on these mutations. On the other hand, the

388 sub-regions for S94F, 141-143del, P681H/R, K417N/T, E1092K, and H1101Y were  
389 covered in the sequence data, and the corresponding mutations were absent.

390 Altogether, our genomic surveillance in wastewater confirmed the presence of previously  
391 reported mutations while identifying mutations not yet registered in clinical surveillance,  
392 albeit the current strategy has large room for improvement considering the fragmented  
393 nature of the sequence data. Although the Philippines has a national genomic  
394 biosurveillance program, only representative clinical samples are included (DOH, 2021),  
395 thereby introducing the possibility of excluding other relevant circulating SARS-CoV-2  
396 variants. Wastewater genomic surveillance can complement clinical surveillance by  
397 providing additional genomic information about circulating and emerging mutations using  
398 lesser resources, given that pools of individuals are represented in every wastewater  
399 sample used for WGS.

400 This pilot application identified a unique set of challenges for wastewater surveillance in  
401 the Philippines. COVID-19 WBE has been reported in over 50 countries worldwide, and  
402 94% of these countries belong to the high and upper-middle income countries that have  
403 centralized wastewater treatment plants (WWTPs) (Naughton et al., 2021 PREPRINT).  
404 With WWTPs, accurate data about the population served by the specific treatment plant is  
405 available, and biological, physicochemical, and hydrologic data are regularly monitored,  
406 permitting near-real-time spatio-temporal trend analysis on COVID-19 transmission in the  
407 served population (Michael-Kordatou, Karaolia, and Fatta-Kassinos, 2020). Unlike high  
408 and upper-middle income countries, most cities in the Philippines, including Davao City,  
409 do not have centralized wastewater treatment facilities. Over 90% of households in Davao  
410 City are connected to private or communal septic systems (JICA, 2018), and sewer pipes  
411 carry primary-treated wastewaters along with surface runoff onto the draining natural

412 bodies of water. One of the challenges in this study was obtaining reliable estimates of  
413 the contributing population to the wastewaters collected since data on sewer pipe  
414 networks in the *barangays* were fragmented, and only personal knowledge of barangay  
415 personnel about sewer networks was available as of writing. Cities without centralized  
416 WWTP that plan to implement WBE, whether for COVID-19 or other water-related  
417 infectious diseases, must ensure that a comprehensive map of sewer pipelines is first  
418 generated to identify the population contributing to the wastewater accurately. However,  
419 WBE can also be used for non-intrusive targeted site testing for COVID-19 infections. For  
420 example, wastewater samples from residential buildings were tested for SARS-CoV-2 in  
421 Singapore (Wong et al., 2021) and Hong Kong (Sharon, 2021). Positive test results  
422 prompted their respective health agencies to implement compulsory testing of residents  
423 and isolation of infected persons, thereby limiting the spread of COVID-19 in the tested  
424 community.

425 The location of wastewater sampling was also crucial in this study. Sample collection at  
426 sites close to the Davao Gulf (i.e., 76-A Bucana, Leon Garcia, Monteverde, and 23-C)  
427 was greatly influenced by tidal changes. During high tide, the sewer pipes become  
428 partially submerged in seawater (or riverine water at 76-A Bucana), and the direction of  
429 wastewater flow is inward, which reverses during low tide. Besides dilution, saltwater  
430 intrusion to wastewater may hasten the decay of enveloped viruses like SARS-CoV-2  
431 (Pinon and Vialette, 2018) and may affect the levels of detectable viral RNA in the  
432 samples. Hence, sample collection was done only during low tide to reduce wastewater  
433 dilution with seawater. Therefore, when planning WBE using sewer lines that open to a  
434 river or the sea, sewer pipelines that are consistently above the level of a river or  
435 seawater are ideal.

436 Furthermore, anthropogenic factors such as industrial discharge and livestock wastes  
437 have been shown to alter the water quality and may influence nutrient loads, coliforms,  
438 and chemical composition (Khatri and Tyagi, 2015). O'Brien and colleagues (2017) also  
439 found that the abundance and diversity of viruses in wastewater varied with their  
440 environment. We are currently evaluating physico-chemical, hydrologic, and  
441 anthropogenic factors' contributions to recovering SARS-CoV-2 RNA from community  
442 wastewater in Davao City.

443 Another factor to consider in WBE is the sampling strategy. In most cities, the sewage  
444 flow rate is greatest during the morning and the evening, and a 24-hour composite  
445 sampling can catch these peak flows with the most reliable mean viral levels in the  
446 wastewater (Michael-Kordatou et al., 2020). However, composite samples may also result  
447 in reduced viral titers compared to grab sampling (Michael-Kordatou et al., 2020,  
448 Nemudryi et al., 2020 PREPRINT) because of the dilution of viruses (Napit et al., 2021  
449 PREPRINT). In addition, composite sampling is also logistically challenging, especially  
450 without expensive automated wastewater collectors. In this study, grab samples were  
451 collected between 8 AM to 3 PM, depending on the site's distance from the laboratory  
452 and the changing of tides (for sites near the Davao Gulf). For future studies, the collection  
453 of grab samples during peak hours of human toilet use (e.g., 7 AM to 9 AM) is an  
454 alternative method that can improve the chances of detecting fecally shed SARS-CoV-2,  
455 especially in low-incidence and low-resource areas (Napit et al., 2021 PREPRINT).

456 Another critical step in WBE is choosing a concentration method for viruses (Michael-  
457 Kordatou et al., 2020). Wastewater is an environmental matrix with high chemical and  
458 biological complexity that may affect viral recovery (Shi, Pasco, and Tarabara, 2017).  
459 Since most fecally-shed SARS-CoV-2 viruses are unprotected or non-intact forms

460 (Wurtzer et al., 2020), they are more susceptible to degradation. The method for the  
461 concentration of viruses from wastewater used in this study is a combination of PES  
462 filtration and PEG-NaCl precipitation, modified from Wu et al. (2020). However, RNA  
463 recovery was not computed in this study; RNA levels of wastewater-concentrated viruses  
464 correlated with the SARS-CoV-2 Ct values. Ahmed et al. (2020) reported that using PEG  
465 precipitation can yield RNA recoveries ranging from 26.7 to 65.7% using a SARS-CoV-2  
466 surrogate virus (murine hepatitis virus). RNA recovery is an essential measure of how  
467 much RNA is available for downstream SARS-CoV-2 detection (CDC, 2020), and this  
468 may depend on several factors, such as the volume of wastewater samples collected,  
469 sample processing (including viral concentration), and RNA extraction method chosen  
470 (Kantor et al., 2021). Michael-Kordatou et al. (2020) further recommended processing  
471 higher volumes of wastewater in low COVID-19 incidence areas to increase the chances  
472 of SARS-CoV-2 detection.

473 The method used for detection has to be considered. The standard markers used for  
474 SARS-CoV-2 detection in wastewater are the N1, N2, and N3 genes and E Sarbecovirus  
475 gene (Kitajima et al. 2020). Our pilot investigation suggests using either the N or RdRp  
476 gene, as they had consistently higher rates of detection (75-100%) relative to E (62.5%)  
477 both in the community and hospital wastewaters. Ct values in this study were also within  
478 the previously reported range of 27 to almost 40 (Ahmed et al., 2020a and 2020b, Bar-Or  
479 et al., 2020, Kocamemi et al., 2020, Kumar et al., 2020, Napit et al., 2021, Wu et al.,  
480 2020). Because of the absence of costly quantification standards for RT-PCR,  
481 quantification of viral genome copies per volume of wastewater and, consequently, the  
482 determination of analytical specificity (i.e., limit of detection, LOD) were not performed in  
483 this pilot study. Although the AllPlex™ 2019-nCOV assay (Seegene Inc., 2020) was

484 developed for clinical applications using respiratory samples, we demonstrate its  
485 applicability for SARS-CoV-2 detection in feces-contaminated environmental samples, as  
486 has been done in Nepal (Napit et al. 2021 PREPRINT). Subsequent WBE studies must  
487 adhere to the Environmental Microbiology Minimum Information (EMMI) for publication of  
488 Quantitative Real-time PCR Experiments which describes essential and desired qPCR  
489 information, such as RNA yield, contamination assessment, inhibition testing, LOD  
490 determination, and repeatability, that researchers must report to ensure the validity and  
491 reliability of qPCR studies (Borchardt et al., 2021).

492 It is unclear if the wastewater samples that were negative for SARS-CoV-2 genes in this  
493 study collected on weeks when both new and active cases were reported were indeed  
494 true negatives. In addition, more robust WBE data would have been reported if the  
495 determination of RNA recovery and LOD and PCR inhibition studies were performed and  
496 correlated with the detection of SARS-CoV-2 target genes. Nonetheless, to our  
497 knowledge, this is the first paper to report COVID-19 wastewater surveillance in the  
498 Philippines and the Western Pacific region.

499

## 500 **CONCLUSION AND RECOMMENDATIONS**

501 In summary, SARS-CoV-2 RNA was detected in community-level wastewater from the six  
502 barangays of Davao City, even when the barangays were classified as having a Low Risk  
503 of COVID-19 transmission and no new cases were reported. In addition, previously  
504 reported mutations and novel non-synonymous mutations were also detected from whole-  
505 genome sequencing of wastewater. These results highlight the potential of systematic  
506 wastewater-based epidemiology for SARS-CoV-2 as a complementary approach to  
507 clinical surveillance even in a low-sanitation metropolitan like Davao City, Philippines.

508 Viral load per community must be estimated to generate COVID-19 transmission trends  
509 and assist the local government in planning and evaluating the appropriate public health  
510 interventions. Future studies must also explore the effect of different physico-chemical,  
511 biological, hydrologic, and anthropogenic parameters on viral detection and quantification  
512 following the EMMI guidelines. When planning to adopt WBE for COVID-19 in areas  
513 without WWTPs and with low testing resources, cities and/or research groups must  
514 consider: 1) knowledge or a map of sewer lines and available population data contributing  
515 to the wastewater to be monitored, 2) proper site selection and appropriate sampling  
516 design considering the local conditions, 3) the impact of onsite anthropogenic and  
517 environmental factors on detection, 4) optimized methods for virus concentration and  
518 detection, and 5) adequate resources for field and laboratory work.

#### 519 **ACKNOWLEDGEMENTS**

520  
521 This project was supported by the University of the Philippines Mindanao In-House  
522 Research Grant, the DOST - Philippine Council for Health Research and Development  
523 through the Philippine Genome Center Mindanao, the Just One Giant Lab through the  
524 Project Accessible Genomics, New England BioLabs Inc., and USAID PEER subaward  
525 number (2000009924).

526 The authors would also like to thank the Davao City Health Office, the local government  
527 units under the City Government of Davao, and partner hospitals for their support and  
528 assistance, and Dr. Diana Aga for discussions on sample collection and analyses.

529 The authors would also like to acknowledge the following for their expert advice on  
530 nanopore and wastewater sequencing: Ralf Dagdag and Matthew Redlinger from the  
531 Bortz Virology Laboratory at the University of Alaska Anchorage; Dr. Amanda Warr from  
532 the Roslin Institute of the University of Edinburgh; Dr. Nicole Wheeler from the University

533 of Birmingham; Dr. Lara Urban, co-founder of *PuntSeq*; and Dr. Joe Russell from  
534 MRIGlobal.

535



536  
537  
538  
539  
540  
541  
542  
543  
544  
545  
546  
547  
548  
549  
550  
551  
552  
553  
554  
555  
556  
557  
558  
559  
560  
561  
562  
563  
564  
565  
566  
567  
568  
569  
570  
571  
572  
573  
574  
575  
576  
577  
578  
579  
580  
581  
582

## REFERENCES

- Ahmed, W., Angel, N., Edson, J., Bibby, K., Bivins, A., O'Brien, J. W., Choi, P. M., Kitajima, M., Simpson, S. L., Li, J., Tschärke, B., Verhagen, R., Smith, W. J. M., Zaugg, J., Dierens, L., Hugenholtz, P., Thomas, K. V., & Mueller, J. F. (2020). First confirmed detection of SARS-CoV-2 in untreated wastewater in Australia: A proof of concept for the wastewater surveillance of COVID-19 in the community. *Science of the Total Environment*, 728, 138764. <https://doi.org/10.1016/j.scitotenv.2020.138764>.
- Ahmed, W., Bertsch, P. M., Angel, N., Bibby, K., Bivins, A., Dierens, L., Edson, J., Ehret, J., Gyawali, P., Hamilton, K. A., Hosegood, I., Hugenholtz, P., Jiang, G., Kitajima, M., Sichani, H. T., Shi, J., Shimko, K. M., Simpson, S. L., Smith, W. J. M., Symonds, E., Thomas, K., Verhagen, R., Zaugg, J., & Mueller, J. F. (2020). Detection of SARS-CoV-2 RNA in commercial passenger aircraft and cruise ship wastewater: A surveillance tool for assessing the presence of COVID-19 infected travellers. *Journal of Travel Medicine*, 27(5), 1–11. <https://doi.org/10.1093/JTM/TAAA116>.
- Aiewsakun, P., Wongtrakoongate, P., Thawornwattana, Y., Hongeng, S., & Thitithanyanont, A. (2020). SARS-CoV-2 genetic variations associated with COVID-19 severity. *MedRxiv*. <https://doi.org/10.1101/2020.05.27.20114546>.
- Bar-Or, I., Yaniv, K., Shagan, M., Ozer, E., Erster, O., Mendelson, E., Mannasse, B., Shirazi, R., Kramarsky-Winter, E., Nir, O., Abu-Ali, H., Ronen, Z., Rinott, E., Lewis, Y., Friedler, E., Bitkover, E., Paitan, Y., Berchenko, Y., & Kushmaro, A. (2020). Regressing SARS-CoV-2 sewage measurements onto COVID-19 burden in the population: a proof-of-concept for quantitative environmental surveillance Regressing SARS-CoV-2 sewage measurements onto COVID-19 burden in the population: a proof-of-concept for quanti. *MedRxiv*, 1–11. <https://doi.org/10.1101/2020.04.26.20073569>.
- Bascos, N. A. D., Mirano-Bascos, D., & Saloma, C. P. (2021). Structural Analysis of Spike Protein Mutations in the SARS-CoV-2 P. 3 Variant. *bioRxiv*. doi: <https://doi.org/10.1101/2021.03.06.434059>.
- Bivins, A., North, D., Ahmad, A., Ahmed, W., Alm, E., Been, F., Bhattacharya, P., Bijlsma, L., Boehm, A. B., Brown, J., Buttiglieri, G., Calabro, V., Carducci, A., Castiglioni, S., Cetecioglu Gurol, Z., Chakraborty, S., Costa, F., Curcio, S., De Los Reyes, F. L., Vela, J., Farkas, K., Fernandez-Casi, X., Gerba, C., Gerrity, D., Girones, R., Gonzalez, R., Haramoto, E., Harris, A., Holden, P. A., Islam, Md. T., Jones, D.L., Kasprzyk-Hordern, B., Kitajima, M., Kotlarz, N., Kumar, M., Kuroda, K., La Rosa, G., Malpei, F., Mautus, M., McLellan, S.L., Medema, G., Meschke, J.S., Mueller, J., Newton, R.J., Nilsson, D., Noble, R.T., van Nuijs, A., Peccia, J., Perkins, T.A., Pickering, A.J., Rose, J., Sanchez, G., Smith, A., Stadler, L., Stauber, C., Thomas, K., van der Voorn, T., Wigginton, K., Zhu, K., & Bibby, K. (2020). Wastewater-Based Epidemiology: Global Collaborative to Maximize Contributions in the Fight against COVID-19. *Environmental Science and Technology*, 54(13), 7754–7757. <https://doi.org/10.1021/acs.est.0c02388>.
- Borchardt, M. A., Boehm, A. B., Salit, M., Spencer, S. K., Wigginton, K. R., & Noble, R. T. (2021). The Environmental Microbiology Minimum Information (EMMI) Guidelines: qPCR and dPCR Quality and Reporting for Environmental Microbiology. *Environmental Science & Technology* 55, 10210-10223.
- Centers for Disease Control and Prevention. (2020). *Wastewater Surveillance Testing Methods*. Retrieved from <https://www.cdc.gov/healthywater/surveillance/wastewater-surveillance/testing-methods.html>.
- Chaw, S.-M., Tai, J.-H., Chen, S.-L., Hsieh, C.-H., Chang, S.-Y., Yeh, S.-H., Yang, W.-S., Chen, P.-J., & Wang, H.-Y. (2020). The origin and underlying driving forces of the SARS-CoV-2 outbreak. *Journal of Biomedical Science*, 27(1), 73. <https://doi.org/10.1101/2020.04.12.038554>.
- Chen, Y., Chen, L., Deng, Q., Zhang, G., Wu, K., Ni, L., Yang, Y., Liu, B., Wang, W., Wei, C., Yang, J., Ye, G., & Cheng, Z. (2020). The presence of SARS-CoV-2 RNA in the feces of COVID-19 patients. *Journal of Medical Virology*, 92(7), 833–840. <https://doi.org/10.1002/jmv.25825>.
- City Government of Davao. (2020, October). *Davao City sets up 5 Covid-19 facilities as SPMC reaches capacity*. <https://www.davaocity.gov.ph/covid-19/davao-city-sets-up-5-covid-19-facilities-as-spmc-reaches-capacity/>.

583 City Government of Davao. (2021a). *December 27 to January 2 2021 Barangay Classifications* [Facebook  
584 *Update*]. <https://m.facebook.com/davaocitygov/>.

585 City Government of Davao. (2021b, April). *Davao City targets 1K swab tests per day*.  
586 <https://www.davaocity.gov.ph/covid-19/davao-city-targets-1k-swab-tests-per-day/>.

587 Crits-Christoph, A., Kantor, R. S., Olm, M. R., Whitney, O. N., Al-Shayeb, B., Lou, Y. C., Flamholz, A., Kennedy, L.  
588 C., Greenwald, H., Hinkle, A., Hetzel, J., Spitzer, S., Koble, J., Tan, A., Hyde, F., Schroth, G., Kuersten, S.,  
589 Banfield, J. F., & Nelson, K. L. (2021). Genome sequencing of sewage detects regionally prevalent SARS-  
590 CoV-2 variants. *MBio*, *12*(1), 1–9. <https://doi.org/10.1128/mBio.02703-20>

591 Daughton, C. G. (2020). Wastewater surveillance for population-wide Covid-19: The present and future. In  
592 *Science of the Total Environment* (Vol. 736, p. 139631). Elsevier B.V.  
593 <https://doi.org/10.1016/j.scitotenv.2020.139631>.

594 Department of Health Davao Region. (2021). *DOH Davao COVID-19 Regional Daily Case Bulletin #294* [Facebook  
595 *Update*]. <https://www.facebook.com/DOHdavao>.

596 Department of Health Philippines. (2021, January). *PH Genomic Biosurveillance detects SARS-CoV-2 UK variant*.  
597 [https://doh.gov.ph/doh-press-release/PH-GENOMIC-BIOSURVEILLANCE-DETECTS-SARS-COV-2-UK-](https://doh.gov.ph/doh-press-release/PH-GENOMIC-BIOSURVEILLANCE-DETECTS-SARS-COV-2-UK-VARIANT)  
598 [VARIANT](https://doh.gov.ph/doh-press-release/PH-GENOMIC-BIOSURVEILLANCE-DETECTS-SARS-COV-2-UK-VARIANT).

599 Farkas, C., Mella, A., & Haigh, J. J. (2020). Large-scale population analysis of SARS-CoV2 whole genome  
600 sequences reveals host-mediated viral evolution with emergence of mutations in the viral Spike protein  
601 associated with elevated mortality rates. *medRxiv*. t doi: <https://doi.org/10.1101/2020.10.23.20218511>.

602 Gámbaro, F., Behillil, S., Baidaliuk, A., Donati, F., Albert, M., Alexandru, A., Vanpeene, M., Bizard, M.,  
603 Brisebarre, A., Barbet, M., Derrar, F., van der Werf, S., Enouf, V., & Simon-Lorriere, E. (2020). Introductions  
604 and early spread of SARS-CoV-2 in France, 24 January to 23 March 2020. *Eurosurveillance*, *25*(26), 1–7.  
605 <https://doi.org/10.2807/1560-7917.ES.2020.25.26.2001200>.

606 Goldman, D., & Domschke, K. (2014). Making sense of deep sequencing. *International Journal of*  
607 *Neuropsychopharmacology*, *17*(10), 1717–1725. <https://doi.org/10.1017/S1461145714000789>.

608 Guerrero-Latorre, L., Ballesteros, I., Villacrés-Granda, I., Granda, M. G., Freire-Paspuel, B., & Ríos-Touma, B.  
609 (2020). *SARS-CoV-2 in river water: Implications in low sanitation countries*. *743*, 140832.  
610 <https://doi.org/10.1016/j.scitotenv.2020.140832>

611 Izquierdo-Lara, R., Elsinga, G., Heijnen, L., Munnink, B., Schapendonk, C., Nieuwenhuijse, D., Kon, M., Lu, L.,  
612 Aarestrup, F.M., Lycett, S., Medema, G., Koopmans, M.F.G., de Graaf, M. (2021). Monitoring SARS-CoV-2  
613 Circulation and Diversity through Community Wastewater Sequencing, the Netherlands and Belgium.  
614 *Emerging Infectious Diseases*, *27*(5), 1405–1415. <https://doi.org/10.3201/eid2705.204410>

615 Japan International Cooperation Agency (JICA). (2018). *Davao City Infrastructure Development Plan and*  
616 *Capacity Building Project, Final Report Summary*. <https://openjicareport.jica.go.jp/pdf/12308706.pdf>.

617 Kantor, R. S., Nelson, K. L., Greenwald, H. D., & Kennedy, L. C. (2021). Challenges in Measuring the Recovery of  
618 SARS-CoV-2 from Wastewater. *Environmental Science and Technology*, *55*(6), 3514–3519.  
619 <https://doi.org/10.1021/acs.est.0c08210>

620 Khatri, N., & Tyagi, S. (2015). Influences of natural and anthropogenic factors on surface and groundwater  
621 quality in rural and urban areas. *Frontiers in Life Science*, *8*(1), 23–39.  
622 <https://doi.org/10.1080/21553769.2014.933716>

623 Kitajima, M., Ahmed, W., Bibby, K., Carducci, A., Gerba, C. P., Hamilton, K. A., Haramoto, E., & Rose, J. B. (2020).  
624 SARS-CoV-2 in wastewater: State of the knowledge and research needs. *Science of the Total Environment*,  
625 *739*, 139076. <https://doi.org/10.1016/j.scitotenv.2020.139076>

626 Kocamemi, B. A., Kurt, H., Hacıoglu, S., Yaralı, C., Saatci, A. M., & Pakdemirli, B. (2020). First Data-Set on SARS-  
627 CoV-2 Detection for Istanbul Wastewaters in Turkey Authors Marmara University , Department of  
628 Environmental Engineering , Istanbul , Turkey Saglik Bilimleri University , Faculty of Medicine ,

629 Department of Medical Biology , Istanbul. *MedRxiv*, April, 2–11.  
630 <https://doi.org/10.1101/2020.05.03.20089417>.

631 Korber, B., Fischer, W. M., Gnanakaran, S., Yoon, H., Theiler, J., Abfalterer, W., Hengartner, N., Giorgi, E. E.,  
632 Bhattacharya, T., Foley, B., Hastie, K. M., Parker, M. D., Partridge, D. G., Evans, C. M., Freeman, T. M., de  
633 Silva, T. I., Angyal, A., Brown, R. L., Carrilero, L., Green, R., Groves, D., Johnson, K., Keeley, A., Lindsey, B.,  
634 Parsons, P., Raza, M., Rowland-Jones, S., Smith, N., Tucker, R., Wang, D., Wyles, M., McDanal, C., Perez,  
635 L., Tang, H., Moon-Walker, A., Whelan, S., LaBranche, C., Saphire, E., & Montefiori, D. C. (2020). Tracking  
636 Changes in SARS-CoV-2 Spike: Evidence that D614G Increases Infectivity of the COVID-19 Virus. *Cell*,  
637 *182*(4), 812–827.e19. <https://doi.org/10.1016/j.cell.2020.06.043>.

638 Kumar, M., Kumar, A., Shah, A. V., Raval, J., & Rajpara, N. (2020). First proof of the capability of wastewater  
639 surveillance for COVID-19 in India through detection of genetic material of SARS-CoV-2. *Science of the*  
640 *Total Environment*, *746*(January), 1–8. <https://doi.org/10.1016/j.scitotenv.2020.141326>.

641 Larsen, D. A., & Wigginton, K. R. (2020). Tracking COVID-19 with wastewater Wastewater testing captures the  
642 rise and fall of novel coronavirus cases in a mid-sized metropolitan region. *Nature Biotechnology*, *38*,  
643 1151–1153. <https://doi.org/10.1038/s41587-020-0690-1>.

644 Loman, N., Rowe, W., Rambaut, A. (2020). *nCoV-2019 novel coronavirus bioinformatics protocol*.  
645 <https://artic.network/ncov-2019/ncov2019-bioinformatics-sop.html>.

646 Martin, J., Klapsa, D., Wilton, T., Zambon, M., Bentley, E., Bujaki, E., Fritzsche, M., Mate, R., & Majumdar, M.  
647 (2020). Tracking SARS-CoV-2 in Sewage: Evidence of. *Viruses*, *12*(10), 1144.  
648 <https://doi.org/10.3390/v12101144>.

649 Michael-Kordatou, I., Karaolia, P., & Fatta-kassinos, D. (2020). Sewage analysis as a tool for the COVID-19  
650 pandemic response and management: the urgent need for optimised protocols for SARS-CoV-2 detection  
651 and quantification. *Journal of Environmental Chemical Engineering*, *8*, 1–25.  
652 <https://doi.org/10.1016/j.jece.2020.104306>.

653 Napit, R., Manandhar, P., Chaudhary, A., Shrestha, B., Poudel, A., Raut, R., Pradhan, S., Raut, S., Mathema, S.,  
654 Rajbhandari, R., Dixit, S., Schwind, J. S., Johnson, C. K., Mazet, J. K., & Karmacharya, D. (2021). Rapid  
655 genomic surveillance of SARS-CoV-2 in a dense urban community using environmental (sewage) samples.  
656 *MedRxiv*, 2021.03.29.21254053. <https://doi.org/10.1101/2021.03.29.21254053>.

657 National Economic and Development Authority Region XI (NEDA Region XI). (n.d.). *Davao Region*.  
658 <https://nro11.neda.gov.ph/>.

659 Naughton, C. C., Roman, F. A., Grace, A., Alvarado, F., Tariqi, A. Q., Deeming, M. A., Bibby, K., Bivins, A., Rose, J.  
660 B., Medema, G., Ahmed, W., Katsivelis, P., Allan, V., Sinclair, R., Zhang, Y., & Kinyua, M. N. (2021). Show  
661 us the Data: Global COVID-19 Wastewater Monitoring Efforts, Equity, and Gaps. *MedRxiv*,  
662 2021.03.14.21253564. <https://doi.org/10.1101/2021.03.14.21253564>.

663 Nemudryi, A., Nemudraia, A., Wiegand, T., Surya, K., Buyukyoruk, M., Cicha, C., Vanderwood, K., Wilkinson, R.,  
664 & Wiedenheft, B. (2020). Temporal detection and phylogenetic assessment of SARS-CoV-2 in municipal  
665 wastewater. *Cell Reports Medicine*, *1*(6), 100098. <https://doi.org/10.1016/j.xcrm.2020.100098>.

666 Nsubuga, P., White, M.E., Thacker, S.B., Anderson, M.A., Blount, S.B., Broome, C. V., Chiller, T.M., Espitia, V.,  
667 Imtiaz, R., Sosin, D., Stroup, D.F., Tauxe, R. V., Vijayaraghavan, M., Trostle, M. (2006). Public Health  
668 Surveillance: A Tool for Targeting and Monitoring Interventions, Disease Control Priorities in Developing  
669 Countries. In *Disease Control Priorities in Developing Countries* (2nd Edition). The International Bank for  
670 Reconstruction and Development / The World Bank.  
671 <https://www.ncbi.nlm.nih.gov/books/NBK11770/?report=reader>.

672 O'Brien, E., Nakyazze, J., Wu, H., Kiwanuka, N., Cunningham, W., Kaneene, J. B., & Xagorarakis, I. (2017). Viral  
673 diversity and abundance in polluted waters in Kampala, Uganda. *Water Research*, *127*, 41–49.  
674 <https://doi.org/10.1016/j.watres.2017.09.063>.

675 Oxford Nanopore Technologies. (n.d.). *MinION*. <https://nanoporetech.com/products/minion>.

676 Park, S. kyung, Lee, C. W., Park, D. Il, Woo, H. Y., Cheong, H. S., Shin, H. C., Ahn, K., Kwon, M. J., & Joo, E. J.  
677 (2021). Detection of SARS-CoV-2 in Fecal Samples From Patients With Asymptomatic and Mild COVID-19  
678 in Korea. *Clinical Gastroenterology and Hepatology*, *19*(7), 1387-1394.e2.  
679 <https://doi.org/10.1016/j.cgh.2020.06.005>.

680 Peccia, J., Zulli, A., Brackney, D. E., Grubaugh, N. D., Kaplan, E. H., Casanovas-Massana, A., Ko, A. I., Malik, A. A.,  
681 Wang, D., Wang, M., Warren, J. L., Weinberger, D. M., Arnold, W., & Omer, S. B. (2020). Measurement of  
682 SARS-CoV-2 RNA in wastewater tracks community infection dynamics. *Nature Biotechnology*, *38*(10),  
683 1164–1167. <https://doi.org/10.1038/s41587-020-0684-z>.

684 Philippine Statistics Authority. (2019). *Gross Regional Domestic Product by Year Published*.  
685 <https://psa.gov.ph/grdp/tables>.

686 Pinon, A., & Viallette, M. (2018). Survival of viruses in water. *Intervirology*, *61*(5), 214–222.  
687 <https://doi.org/10.1159/000484899>.

688 Prado, T., Machado, T., Ferreira, C., Cristina, P., Couto, F., Lucia, A., Eppinghaus, F., Hugo, V., Marinho, R., Braz,  
689 S., Ribeiro, S., Gonçalves, A., & Pereira, M. (2021). Wastewater-based epidemiology as a useful tool to  
690 track SARS-CoV-2 and support public health policies at municipal level in Brazil. *Water Research*,  
691 *191*(January), 116810. <https://doi.org/10.1016/j.watres.2021.116810>.

692 Santerre, M., Arjona, S. P., Allen, C. N., Shcherbik, N., & Sawaya, B. E. (2020). Why do SARS-CoV-2 NSPs rush to  
693 the ER? *Journal of Neurology*, *268*(6), 2013–2022. <https://doi.org/10.1007/s00415-020-10197-8>

694 Schmitz, B. W., Innes, G. K., Prasek, S. M., Betancourt, W. Q., Stark, E. R., Foster, A. R., Abraham, A. G., Gerba, C.  
695 P., & Pepper, I. L. (2021). Enumerating asymptomatic COVID-19 cases and estimating SARS-CoV-2 fecal  
696 shedding rates via wastewater-based epidemiology. *MedRxiv*, 1–25.  
697 <https://doi.org/10.1101/2021.04.16.21255638>.

698 Seegene Inc. (2020). *Allplex™ 2019-nCoV Assay Instructions for Use*.  
699 <https://www.fda.gov/media/137178/download>.

700 Sengupta, A., Hassan, S. S., & Choudhury, P. P. (2021). Clade GR and clade GH isolates of SARS-CoV-2 in Asia  
701 show highest amount of SNPs. *Infection, Genetics and Evolution*, *89*, 1–11.  
702 <https://doi.org/10.1016/j.meegid.2021.104724>.

703 Sharon, A. (2021, March 21). *HKU Engineering-led team co-develops COVID-19 sewage monitoring system*.  
704 <https://opengovasia.com/hku-engineering-led-team-co-develops-covid-19-sewage-monitoring-system/>.

705 Shi, H., Pasco, E. V., & Tarabara, V. V. (2017). Membrane-based methods of virus concentration from water: A  
706 review of process parameters and their effects on virus recovery. *Environmental Science: Water Research  
707 and Technology*, *3*(5), 778–792. <https://doi.org/10.1039/c7ew00016b>.

708 Sims, N., & Kasprzyk-Hordern, B. (2020). Future perspectives of wastewater-based epidemiology: Monitoring  
709 infectious disease spread and resistance to the community level. *Environment International*,  
710 *139*(February), 105689. <https://doi.org/10.1016/j.envint.2020.105689>.

711 Singer, J., Gifford, R., Cotten, M., & Robertson, D. (2020). CoV-GLUE: A Web Application for Tracking SARS-CoV-  
712 2 Genomic Variation. *Preprints*, 2020060225. <https://doi.org/10.20944/preprints202006.0225.v1>.

713 Tablizo, F. A., Kim, K. M., Lapid, C. M., Castro, M. J. R., Yangzon, M. S. L., Maralit, B. A., Ayes, M. E. C., Paz, E. M.  
714 C. la, Guzman, A. R. De, Yap, J. M. C., Llamas, J.-H. S., Araiza, S. M. M., Punayan, K. P., Asin, I. C. A.,  
715 Tambaoan, C. F. B., Chong, A. L. U., Padilla, K. S. A. R., Cruz, R. P. S., Morado, E. K. D., Dizon, J.G.A., Hao,  
716 R.N.M., Zamora, A.A., Pacial, D.R., Magalang, J.A.R., Alejandria, M., Carlos, C., Ong-Lim, A., Salvaña, E.M.,  
717 Wong, J.Q., Montoya, J.C., Singh-Vergeire, M.R., & Saloma, C. P. (2021). Genome sequencing and analysis  
718 of an emergent SARS-CoV-2 variant characterized by multiple spike protein mutations detected from the  
719 Central Visayas Region of the Philippines. *MedRxiv*, 1–20. <https://doi.org/10.1101/2021.03.03.21252812>.

720 Tablizo, F. A., Lapid, C. M., Maralit, B. A., Yap, J. M. C., Destura, R. V., Alejandria, M. A., Petronio-Santos, J. A.,  
721 Morado, E. K. D., Dizon, J. G. A., Llamas, J.-H. S., Araiza, S. M. M., Punayan, K. P., Velasco, J. M. S., Mejia, J.  
722 A., Dollete, M., Salamat, S., Tan, C., Gabriel, K. A. D., Fabilloren, S. R. D., Demot, B., Genavia, S.F., Nipales,

723 J.E., Sanchez, A.C., Gaza, H.L., Arevalo, G.M., Pangilinan, C.M., Acosta, S.A., Salinas, M.V., Schwem, B.E.,  
724 Dela Tonga, A.D., Galarion, M.J.H., Dungca, N.T.P., Geganzo, S.G., Bascos, N.A.D., Cutiongco-de la Paz,  
725 E.M., & Saloma, C. P. (2020). Analysis of SARS-CoV-2 Genome Sequences From the Philippines: Genetic  
726 Surveillance and Transmission Dynamics. *MedRxiv*, 1–30. <https://doi.org/10.1101/2020.08.22.20180034>.  
727 Trottier, J., Darques, R., Mouheb, N. A., Partiot, E., Bakhache, W., Deffieu, M. S., & Gaudin, R. (2020). Post-  
728 lockdown detection of SARS-CoV-2 RNA in the wastewater of Montpellier, France. *One Health*, 10, 100157.  
729 Wang, R., Hozumi, Y., Yin, C., & Wei, G. W. (2020). Decoding SARS-CoV-2 Transmission and Evolution and  
730 Ramifications for COVID-19 Diagnosis, Vaccine, and Medicine. *Journal of Chemical Information and*  
731 *Modeling*, 60(12), 5853–5865. <https://doi.org/10.1021/acs.jcim.0c00501>.  
732 Wannigama, D. L., Amarasiri, M., Hurst, C., Phattharapornjaroen, P., Abe, S., Hongsing, P., Rad, S. M. A. H.,  
733 Pearson, L., Saethang, T., Luk-in, S., Kueakulpattana, N., Storer, R. J., Ounjai, P., Jacquet, A.,  
734 Leelahavanichkul, A., & Chatsuwat, T. (2021). Tracking COVID-19 with wastewater to understand  
735 asymptomatic transmission. *International Journal of Infectious Diseases*, 108, 296–299.  
736 <https://doi.org/10.1016/j.ijid.2021.05.005>.  
737 Winger, A., & Caspari, T. (2021). The Spike of Concern—The Novel Variants of SARS-CoV-2. *Viruses*, 13(6), 1002.  
738 Wong, J. C. C., Tan, J., Lim, Y. X., Arivalan, S., Hapuarachchi, H. C., Mailepessov, D., Griffiths, J., Jayarajah, P.,  
739 Setoh, Y. X., Tien, W. P., Low, S. L., Koo, C., Yenamandra, S. P., Kong, M., Lee, V. J. M., & Ng, L. C. (2021).  
740 Non-intrusive wastewater surveillance for monitoring of a residential building for COVID-19 cases.  
741 *Science of the Total Environment*, 786. <https://doi.org/10.1016/j.scitotenv.2021.147419>.  
742 World Health Organization. (2020). *Non-intrusive wastewater surveillance for monitoring of a residential*  
743 *building for COVID-19 cases*. [https://apps.who.int/iris/bitstream/handle/10665/337897/WHO-2019-](https://apps.who.int/iris/bitstream/handle/10665/337897/WHO-2019-nCoV-SurveillanceGuidance-2020.8-eng.pdf)  
744 [nCoV-SurveillanceGuidance-2020.8-eng.pdf](https://apps.who.int/iris/bitstream/handle/10665/337897/WHO-2019-nCoV-SurveillanceGuidance-2020.8-eng.pdf).  
745 Wu, F., Zhang, J., Xiao, A., Gu, X., Lee, W. L., Armas, F., Kauffman, K. Hange, W., Mats, M. Ghaeli, N., Endo, N.,  
746 Duvallet, C., Poyet, Moniz, K., Washburne, A.D., Erickson, T.B. Chai, P.R., Thompson, J., & Alm, E. J. (2020).  
747 SARS-CoV-2 titers in wastewater are higher than expected from clinically confirmed cases. *Msystems*,  
748 5(4), 1–9. <https://doi.org/10.1128/mSystems.00614-20>.  
749 Wurtzer, S., Waldman, P., Ferrier-Rembert, A., Frenois-Veyrat, G., Mouchel, J. M., Boni, M., Maday, Y.,  
750 Marechal, V., & Moulin, L. (2021). Several forms of SARS-CoV-2 RNA can be detected in wastewaters:  
751 Implication for wastewater-based epidemiology and risk assessment. *Water Research*, 198, 1–10.  
752 <https://doi.org/10.1016/j.watres.2021.117183>.  
753 Zinzula, L. (2021). Lost in deletion: The enigmatic ORF8 protein of SARS-CoV-2. *Biochemical and Biophysical*  
754 *Research Communications*, 538, 116–124. <https://doi.org/10.1016/j.bbrc.2020.10.045>.  
755  
756

757 **TABLES**

758

759 Table 1. Barangay and sampling site characteristics.

Barangay	2020 Est. Population	Land Area (sq. km.)	Population Density (persons/sq. km.)	Source of wastewater	Water body receiving wastewater	New COVID-19 cases <sup>1</sup>	Active COVID-19 cases <sup>1</sup>
23-C	18,474	0.20	94,111.05	Sewer pipe	Davao Gulf	17	23
Leon Garcia	15,296	0.22	68,224.80	Sewer pipe	Davao Gulf	44	59
Monteverde	6,404	0.21	31,042.17	Creek	Davao Gulf	20	26
76-A Bucana	94,074	4.02	23,409.06	Sewer pipe	Davao River	198	264
Matina Crossing	36,342	5.29	6,866.57	Sewer pipe	Matina River	149	196
Mintal	14,820	7.68	1,929.16	Creek	Talomo River	22	31
Entire Davao City	1,816,987	2,440.00	744.67	-	-	3,120	4,379

760 <sup>1</sup> From Nov 8 to Dec 12, 2020

761

762

763 Table 2. SARS-CoV-2 detection in six barangays of Davao City, Philippines on November  
764 8- Dec 12, 2020.  
765

Gene Marker	Communities <sup>1</sup>		Hospitals <sup>2</sup>	
	Positive (%)	Ct range <sup>3</sup>	Positive (%)	Ct range <sup>3</sup>
<b>E</b>	15/24 (62.5%)	29.95 - 39.73	5/8 (62.5%)	33.03 - 37.64
<b>N</b>	20/24 (83.3%)	29.41 - 38.74	8/8 (100%)	30.95 - 37.48
<b>RdRP</b>	21/24 (87.5%)	31.26 - 38.89	6/8 (75%)	31.67 - 39.01
<b>Overall<sup>4</sup></b>	22/24 (91.7%)	29.41 - 39.73	8/8 (100%)	30.95 - 39.01

766 <sup>1</sup> Total of 24 samplings

767 <sup>2</sup> Total of eight samplings

768 <sup>3</sup> Ct values of positive samples

769 <sup>4</sup> Based on the criteria of Allplex SARS-CoV-2 Assay

Table 3. Information on variant calling and corresponding mutations of SARS-CoV-2 detected from wastewater in Davao City, Philippines on Nov- Dec 2020.

Base Position in Reference Sequence	Reference Base	Alternate Base	Type of Mutation	Resulting Mutation	Affected Gene/ Protein/ Region	Number of Sample(s) Represented	Total Number of Observations	Previously Reported?
1190	C	T	Non-synonymous	P129S (P309S)	nsp2 (ORF1a)	1	155	Yes, Sengupta <i>et al.</i> (2020)
5469	T	C	Non-synonymous	L917S (L1735S)	nsp3 (ORF1a)	1	31	No
6312	C	A	Non-synonymous	T1198K (T2016K)	nsp3 (ORF1a)	1	84	Yes, Tablizo <i>et al.</i> (2020)
8299	C	T	Synonymous	N1860 (N2678)	nsp3 (ORF1a)	1	155	No
11082	TG	T	Deletion	Frameshift	nsp6 (ORF1a)	2	605	No
11781	A	G	Non-synonymous	K270R (K3839R)	nsp6 (ORF1a)	1	72	No
13730	C	T	Non-synonymous	A97V	RdRP	2	40	Yes, Tablizo <i>et al.</i> (2020)
14168	C	T	Non-synonymous	P243L	RdRP	1	81	No
14188	G	T	Non-synonymous	A250S	RdRP	1	67	No
14786	C	T	Non-synonymous	A449V	RdRP	1	134	Yes, Wang <i>et al.</i> (2020)
14853	TGTA	T	Deletion	V472 deletion	RdRP	1	141	No
14877	C	T	Synonymous	Y479	RdRP	1	124	Yes, Gámbaro <i>et al.</i> (2020)
14889	C	T	Synonymous	Y483	RdRP	1	117	No
15738	C	T	Synonymous	F766	RdRP	1	354	No
16716	C	T	Synonymous	D160	helicase	1	93	No
23403	A	G	Non-synonymous	D614G	spike (S)	6	541	Yes, Numerous
25397	AT	A	Deletion	Frameshift	ORF3	1	243	No
26753	C	T	Synonymous	T77	membrane (M)	1	43	No
27190	A	G	Synonymous	Silent, at stop codon	membrane (M)	1	96	No
27317	A	G	Non-synonymous	N39S	ORF6	1	101	No
27345	A	G	Synonymous	K48	ORF6	1	101	No
27392	A	G	NONE	NONE	non-coding region between	1	100	No

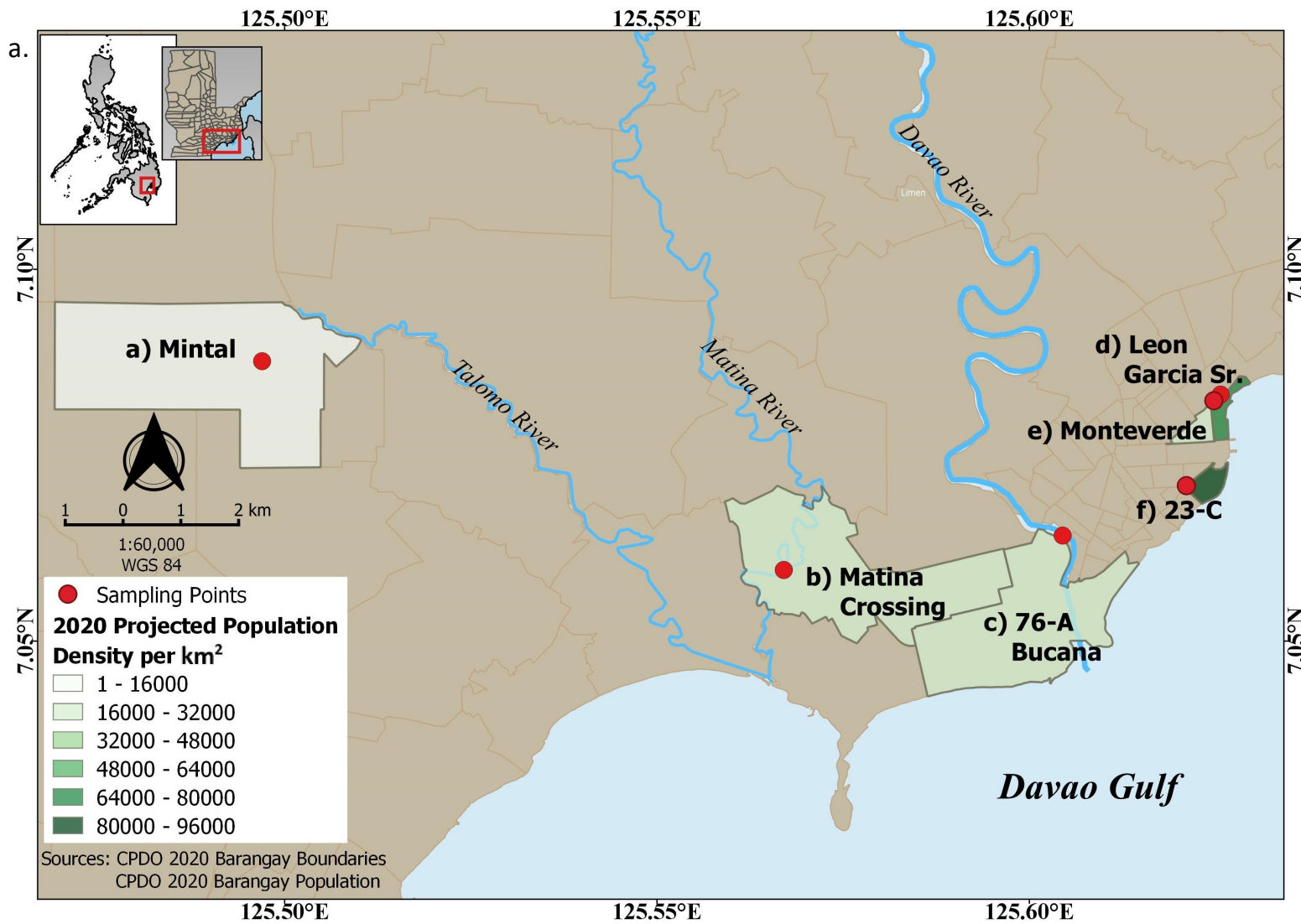


					ORF6 and ORF7a			
27394	A	G	Synonymous?	Alternative start codon? (AUG --> GUG)	ORF7a	1	94	No
27398	A	G	Non-synonymous	K2R	ORF7a	1	99	No
27400	A	G	Non-synonymous	I3V	ORF7a	1	96	No
27487	A	G	Non-synonymous	K32E	ORF7a	1	95	No
28242	G	A	Non-synonymous	V117I	ORF8	2	476	No
28250	T	TCTG	Insertion	120/121 FI --> LFS + loss of stop codon	ORF8	1	143	Might be similar to reported mutations by Zinzula (2021)
28253	CA	C	Deletion			1	139	
28311	C	T	Non-synonymous	P13L	nucleocapsid (N)	2	450	Yes, Tablizo <i>et al.</i> (2020)
28881	GGG	AAC	Non-synonymous	203/204 RG --> KR	nucleocapsid (N)	2	88	Yes, Tablizo <i>et al.</i> (2021)
29421	C	T	Non-synonymous	P383L	nucleocapsid (N)	1	51	Yes, several

## FIGURES

Figure 1. Wastewater outfall and sampling sites in Davao City. a) Location of the six *barangays* and sampling sites with respect to the major draining natural bodies of water. b-d) Different site conditions showing the access points to sewer pipes.

Figure 2. COVID-19 status and SARS-CoV-2 wastewater surveillance in six *barangays* of Davao City, Philippines.



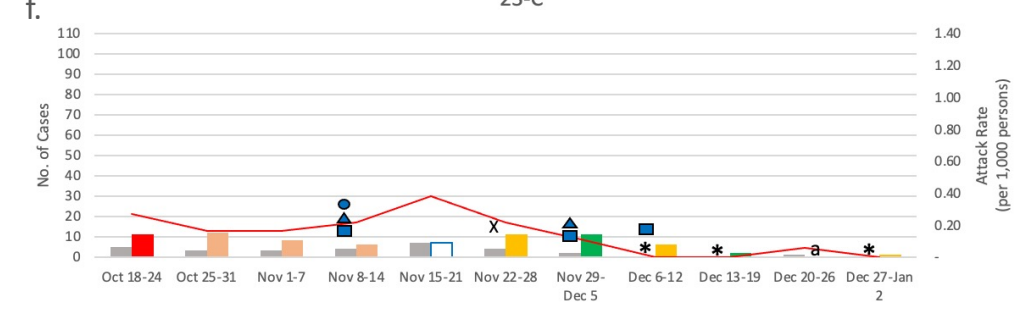
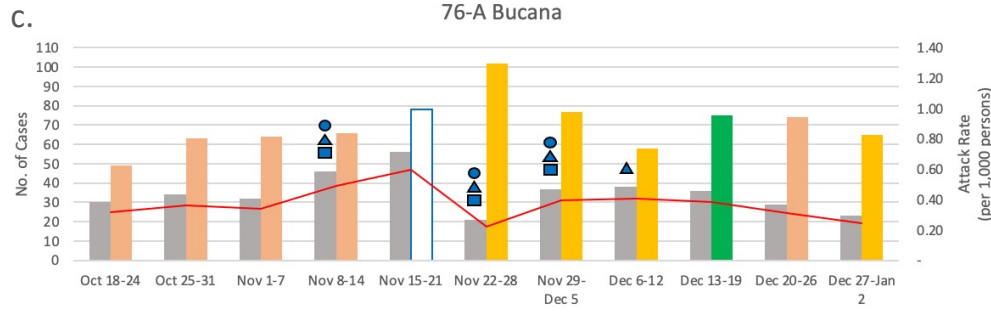
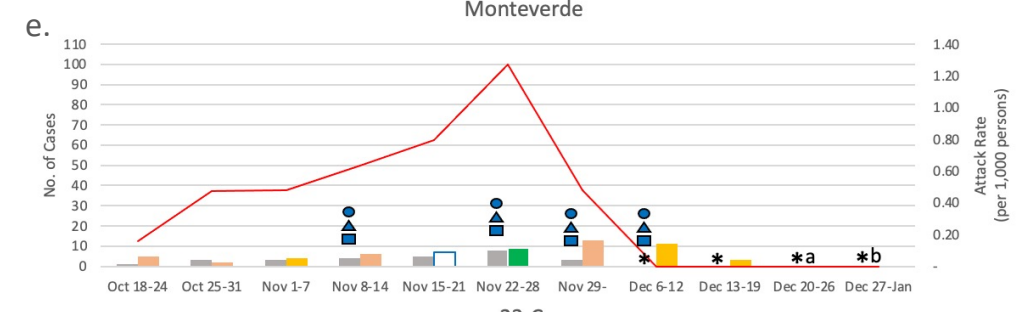
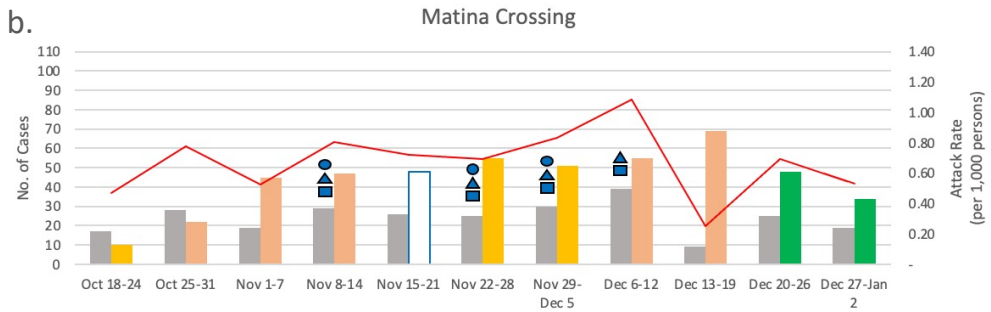
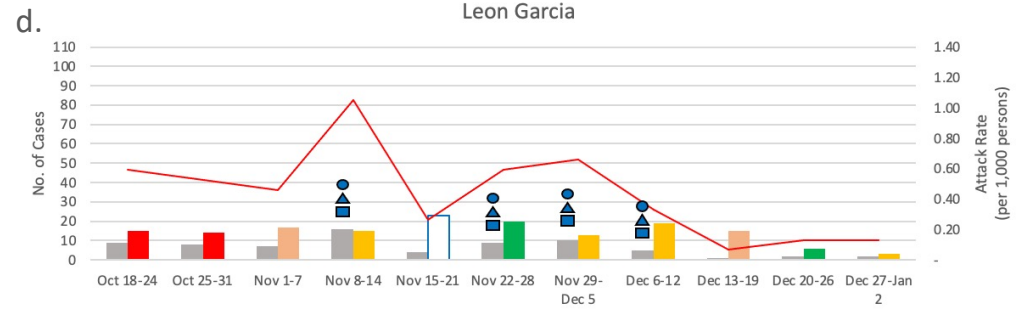
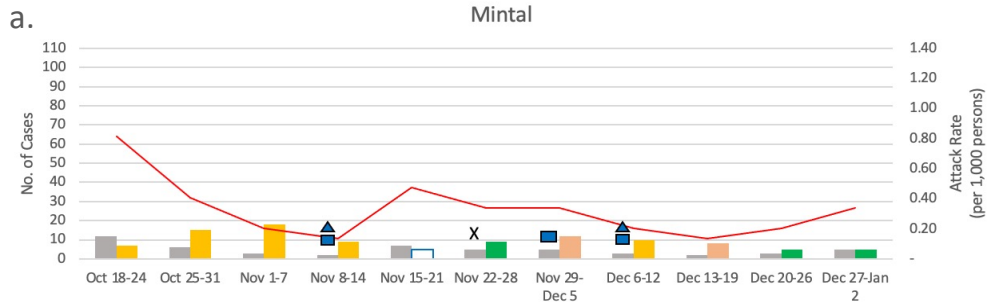
76-A Bucana



Matina Crossing



Leon Garcia Sr.



■ New Cases  
 — Attack Rate  
 □ No new cases reported  
 ■ Active Cases; Low Risk Barangay  
 ■ Active Cases; Moderate Risk Barangay  
 ■ Active Cases; High Risk Barangay  
 ■ Active Cases; Critical Risk Barangay

□ Active Cases; No Risk Assessment Released  
 a No Active Cases; Low Risk Barangay  
 b No Active Cases; Low Risk Barangay  
 ● E gene detected  
 ▲ N gene detected  
 ■ RdRP gene detected  
 X No SARS-COV-2 detected