

1 Disruption of spatiotemporal 2 dependence in dengue transmission 3 by *wMel Wolbachia* in Yogyakarta, 4 Indonesia

5 Suzanne M Dufault^{1*,2}, Stephanie K Tanamas², Citra Indriani³, Adi Utarini³, Riris
6 Andono Ahmad³, Nicholas P Jewell^{1,4}, Cameron P Simmons², Katherine L Anders²

***For correspondence:**

sdufault@berkeley.edu (SMD)

Present address: 2121 Berkeley
Way Room 5302, University of
California, Berkeley, USA 94702

7 ¹Division of Biostatistics, School of Public Health, University of California, Berkeley,
8 Berkeley, USA; ²World Mosquito Program, Institute of Vector-borne Disease, Monash
9 University, Clayton, 3800, Australia; ³World Mosquito Program Yogyakarta, Centre for
10 Tropical Medicine, Faculty of Medicine, Public Health and Nursing, Universitas Gadjah
11 Mada, Yogyakarta 55281, Indonesia; ⁴London School of Hygiene and Tropical Medicine,
12 Bloomsbury, London, WC1E 7HT, UK

14 Abstract

15 Dengue is known to exhibit focal clustering at the level of the household and neighbourhood,
16 driven by local mosquito population dynamics, human population immunity, and fine scale
17 human and mosquito movement. We tested the hypothesis that spatiotemporal clustering of
18 homotypic dengue cases is disrupted by introduction of the arbovirus-blocking bacterium
19 *Wolbachia* (*wMel*-strain) into the *Aedes aegypti* mosquito population in a randomized controlled
20 trial in Yogyakarta, Indonesia. We analysed 318 serotyped dengue cases and 5,921 test-negative
21 controls with geolocated residence enrolled over 27 months following randomized *wMel*
22 deployments. We find evidence of spatial dependence up to 300m among the 265 dengue cases
23 (3,083 controls) detected in the untreated trial arm. Spatial dependence is strongest within 50m,
24 with a 4.7-fold increase (compared to 95% CI on permutation-based null distribution: 0.1, 1.2) in
25 the odds that a pair of individuals enrolled within 30 days and 50m of each other are homotypic
26 dengue cases compared to pairs occurring at any distance. We find no evidence of spatial
27 dependence among the 53 dengue cases (2,838 controls) detected in the *wMel*-treated arm. This
28 provides compelling evidence that introgression of *wMel Wolbachia* into *Aedes aegypti* mosquito
29 populations interrupts focal dengue virus transmission, leading to reduced case incidence.

31 Introduction

32 Dengue places seasonal pressure on healthcare systems and public health resources throughout
33 the tropical and subtropical world, with an estimated 100 million cases globally each year. The
34 disease burden is growing in both case load and countries affected (*Bhatt et al., 2013*). The four
35 serotypes of dengue virus (DENV) are transmitted between humans primarily by the *Aedes aegypti*
36 mosquito, a species that thrives in urban settings where breeding sites and human blood sources
37 co-exist in close proximity. These bionomic factors make households a primary location for DENV
38 transmission risk and this focal nature of DENV transmission has been well observed (*Mammen*
39 *et al., 2008; Vazquez-Prokopec et al., 2010; Aldstadt et al., 2012; Salje et al., 2012; Hoang Quoc*

40 *et al., 2016*).

41 The temporal and spatial scale at which dengue case clustering occurs is informative about
42 both the underlying transmission dynamics and the opportunity to intervene and interrupt trans-
43 mission. A prospective index-cluster study in rural Thailand (*Mammen et al., 2008*) demonstrated
44 highly focal DENV transmission among children residing within 100 meters and 15 days of an index
45 case. A retrospective analysis of serotyped dengue cases in Bangkok (*Salje et al., 2012*) showed
46 spatial dependence in both homotypic and heterotypic dengue cases at different time scales, re-
47 flecting complex interactions between local population immune profiles and dengue transmission.
48 Local mosquito population dynamics, and human population density, immunity and mobility (*Salje*
49 *et al., 2017, 2021; Stoddard et al., 2013*) are understood to be key determinants of these patterns.
50 Peridomestic space spraying of insecticide is a mainstay of dengue control efforts in endemic set-
51 tings, and the observed focal clustering of dengue cases provides a rationale for the common
52 approach of targeted reactive insecticide spraying around the immediate neighbourhood of one
53 or more notified dengue cases. The temporal dimension to focal dengue transmission is impor-
54 tant here, however, with some studies finding serological evidence for clustering of recent DENV
55 infections but no excess of acute, prospectively-detected DENV infections (*Anders et al., 2015*), sug-
56 gesting limited opportunity for reactive efforts to interrupt chains of transmission after detection
57 of an index case. A lack of evidence for the efficacy and optimal implementation of conventional
58 approaches to *Aedes* control (*Bowman et al., 2016; Wilson et al., 2015*) together with the challenge
59 of sustaining these activities at scale and over the long term (*Achee et al., 2015*), helps explain
60 the ongoing occurrence of dengue outbreaks worldwide in spite of the efforts of vector control
61 programs.

62 An alternative approach to the control of *Aedes*-borne diseases uses *Wolbachia*, a naturally oc-
63 ccurring bacterium that is common in insect species but absent from *Ae. aegypti*. *Wolbachia* (*wMel*-
64 strain) infection of *Ae. aegypti* has been shown in the laboratory to reduce their transmission poten-
65 tial for dengue, chikungunya, Zika and Yellow fever viruses (*Dutra et al., 2016; Moreira et al., 2009;*
66 *Pereira et al., 2018; van den Hurk et al., 2012; Walker et al., 2011*), and accumulating field evidence
67 from randomized and non-randomized *wMel* deployments demonstrates a significant reduction
68 in the incidence of dengue and other *Aedes*-borne diseases in communities where *wMel* has been
69 established at a high level (*Indriani et al., 2020; O'Neill et al., 2018; Pinto et al., 2021; Ryan et al.,*
70 *2019; Utarini et al., 2021*). The *wAlbB* strain of *Wolbachia* also has transmission-blocking properties
71 in *Ae. aegypti*, and has been successfully introgressed into field populations (*Nazni et al., 2019*). In
72 a recent randomized trial in Yogyakarta, Indonesia, (the 'Applying *Wolbachia* to Eliminate Dengue'
73 [AWED] trial), the incidence of virologically-confirmed dengue cases was 77% lower in neighbour-
74 hoods where *wMel* was successfully introgressed into local *Ae. aegypti* compared to areas that did
75 not receive *wMel* deployments (*Utarini et al., 2021*). The cluster randomized design of the AWED
76 trial, with *wMel* deployment into 12 of 24 contiguous clusters (average area 1 km²) in a highly ur-
77 ban study setting, means individuals resident in clusters randomized to *wMel* deployments could
78 spend daytime hours at risk of DENV exposure in untreated areas, and vice versa, thereby diluting
79 the measurement of the true intervention effect (*Reiner et al., 2016*). In a per-protocol analysis
80 of the AWED trial accounting for participants' individual *wMel* exposure based on measured *wMel*
81 prevalence in the cluster of residence and other visited clusters, protective efficacy increased with
82 incremental increases in estimated *wMel* exposure, but never exceeded the intention-to-treat ef-
83 ficacy based on the treatment assignment of the cluster of residence (*Utarini et al., 2021*). This
84 supports the home as a primary site of DENV exposure but the per-protocol analysis, as designed
85 *a priori*, could not provide further insights into the extent to which dengue cases detected in res-
86 idents of *wMel*-treated clusters represented local transmission versus DENV infections acquired
87 in untreated areas of Yogyakarta city. The extent to which *wMel* disrupts local DENV transmission
88 has not previously been investigated and provides the motivation for this work.

89 Here we use the geolocated residences of virologically-confirmed dengue cases and test-negative
90 controls enrolled in the AWED trial to test the hypotheses that dengue cases in Yogyakarta cluster

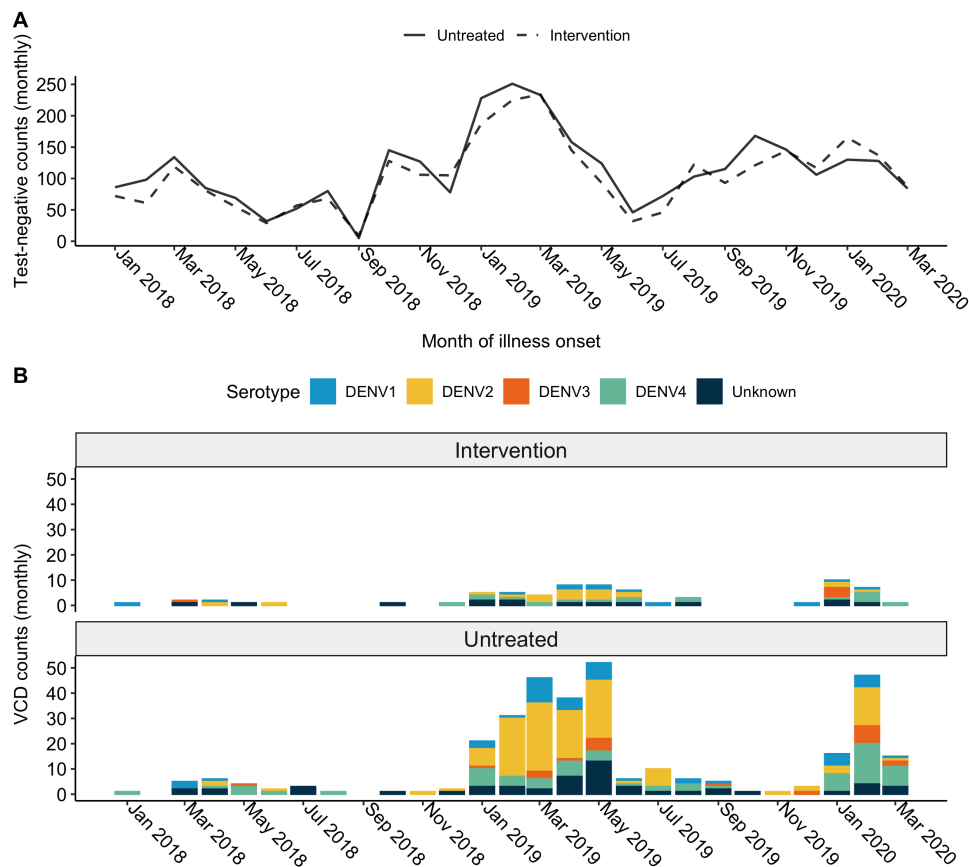


Figure 1. Time series plot for illness onset among A) test-negative controls and B) virologically-confirmed dengue cases included in the primary analysis of the AWED trial in Yogyakarta, Indonesia from January 2018 until March 2020, by intervention arm. No dengue cases were enrolled in September 2018 and, in accordance with the trial protocol (Anders *et al.*, 2020), the test-negatives enrolled during that month were excluded from the analysis dataset.

91 in space and time in the absence of wMel, and that this clustering is disrupted by wMel introgression
 92 into the local *Ae. aegypti* populations.

93 Results

94 Spatial and temporal distribution of dengue cases and test-negative controls

95 We examined the spatial and temporal distribution of 385 virologically-confirmed dengue cases
 96 and 5,921 participants with dengue test-negative febrile illness (test-negative controls) enrolled
 97 in the AWED cluster randomized trial of wMel in Yogyakarta, Indonesia. Among the enrolled partic-
 98 ipants, those with test-negative illness were distributed throughout the entire 27-month study
 99 period in both intervention and untreated arms, with a peak in the first quarter of 2019 (Figure 1A).
 100 The majority of dengue cases in both study arms were enrolled during the wet season (January -
 101 May) in 2019 and 2020 (Figure 1B), with very few cases detected in the first year of trial enrolment
 102 in either study arm. As previously reported (Utarini *et al.*, 2021), amongst the 385 dengue cases,
 103 only 67 (17%) were resident in one of the 12 wMel-treated clusters and the remaining 318 (83%)
 104 were resident in untreated clusters (Figure 2A). All four dengue virus (DENV) serotypes were de-
 105 tected, with a predominance of DENV2 (40%) and DENV4 (23%) (Supplementary Table 1 and Figure
 106 2A). Fourteen dengue cases in the intervention clusters and 53 in the untreated clusters had inde-
 107 terminable DENV serotypes and were therefore excluded from the spatiotemporal analysis, as the
 108 measure used to infer transmission-relatedness relies on the identification of homotypic dengue

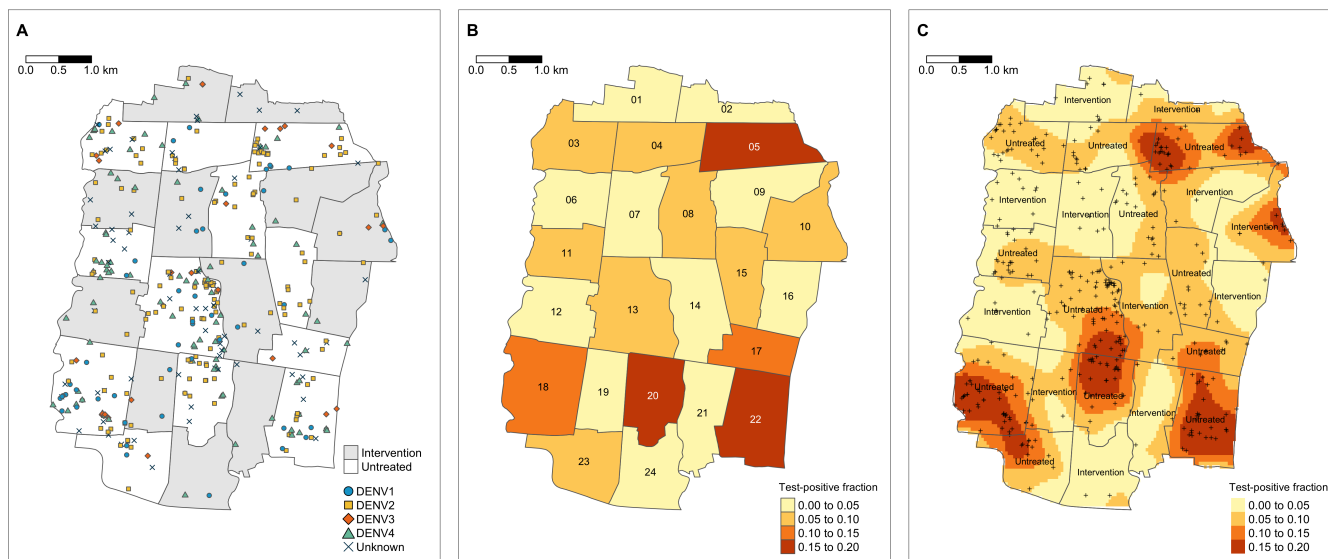


Figure 2. Spatial distribution of A) enrolled dengue cases by serotype across Yogyakarta City, B) the cluster-aggregate test-positive fraction, i.e., the proportion of enrolled dengue cases among the total number of individuals enrolled in each cluster, and C) kernel smoothing estimates of the spatially-varying test-positive fraction. Each map includes participants enrolled from January 2018 through March 2020. The borders in each map represent the cluster boundaries for the AWED trial. Clusters are numbered with their administrative labels. Points represent the geolocated households of virologically confirmed dengue cases. Areas with darker shading are associated with a higher proportion of dengue cases among the AWED participants than areas with lighter shading. Smoothing bandwidth was selected by cross-validation.

109 case pairs.

110 Among the 5,921 participants with test-negative illness, 2,838 (48%) were resident in wMel-
111 treated clusters and 3,083 (52%) in untreated clusters. The map in Figure 2B incorporates the
112 test-negative controls to account for the spatial distribution of the underlying healthcare-seeking
113 population that gives rise to the enrolled dengue cases. Each cluster is shaded according to the
114 cumulative test-positive fraction, i.e., the proportion of enrolled individuals who tested positive
115 for virologically confirmed dengue in each cluster over the 27 months of enrolment. The cluster-
116 specific test-positive fractions ranged from 5.9% to 23.8% in the 12 untreated clusters, whereas the
117 test-positive fraction was $\leq 3.7\%$ in 11 of the 12 intervention clusters. The one exception is interven-
118 tion cluster 10, on the north east boundary of the study site, which had among the lowest overall
119 enrolment rate of all clusters, with 87 test-negative controls and eight dengue cases enrolled. Six
120 of eight cases resided within 50m of the external boundary.

121 For a more granular view of the spatial distribution of dengue cases and test-negative controls,
122 kernel smoothing was used to estimate the spatially-varying test-positive fraction (Figure 2C). Con-
123 sistent with the cluster-level representation, the highest proportions of dengue case occurrence
124 (aggregate over the 27-month trial period) fall within untreated clusters, and these areas of height-
125 ened dengue enrolment extend across the boundaries between untreated clusters.

126 **Impact of wMel on spatial dependence**

127 Understanding the dynamics of DENV transmission in the absence and presence of wMel is of
128 primary interest, but directly inferring chains of transmission is difficult. We instead assume that
129 pairs of homotypic dengue cases enrolled in the AWED study with illness onset within 30 days of
130 each other are potentially transmission-related, whereas pairs of heterotypic dengue cases or test-
131 negative controls within the same time window are assumed not to be transmission-related. We
132 compare the spatial distributions of these two populations of participant pairs as an indicator of
133 spatiotemporal dependence in DENV transmission. To formally test for small-scale spatiotemporal
134 dependence in dengue cases throughout the trial area, we employ a global measure, τ (Lessler

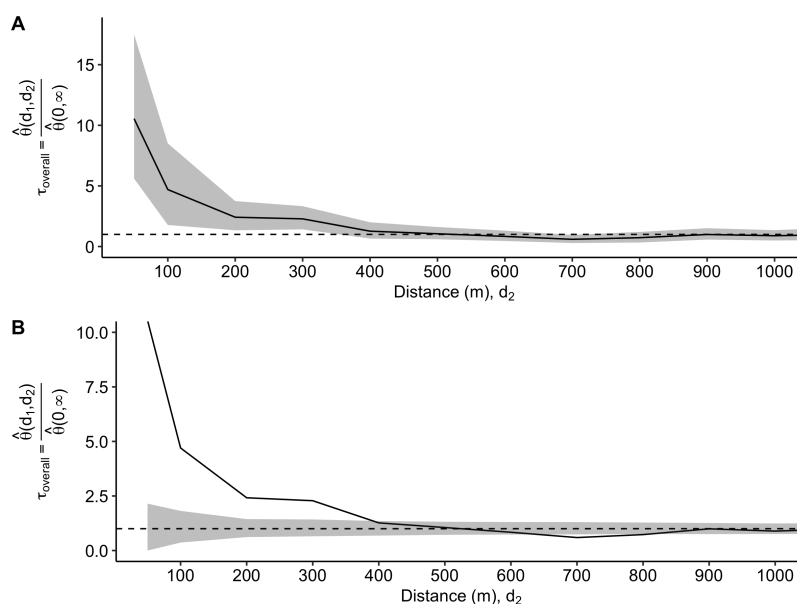


Figure 3. Estimated odds ratio, τ , comparing the odds of a homotypic dengue case pair within (d_1, d_2) versus the odds of a homotypic dengue case pair at any distance across the entire study area among participant pairs with illness onset occurring within 30 days with A) bootstrap 95% confidence interval and B) against the 95% CI on the permutation-based null rejection region.

135 *et al., 2016*). This measure captures the overall tendency of homotypic dengue cases to occur
 136 within specified space-time windows *above and beyond* that observed in the enrolled study popu-
 137 lation due to secular factors such as healthcare-seeking behaviour and environmental conditions
 138 (Materials and Methods). The numerator of this ratio-based estimator identifies, among those en-
 139 rolled within a particular space-time window, the number of homotypic dengue pairs relative to
 140 the number of pairs of enrolled individuals who are assumed not to be transmission-related. The
 141 latter group includes the test-negative controls as well as any heterotypic dengue pairs. As such,
 142 the numerator of the τ -statistic is akin to an estimate of the odds of observing a homotypic dengue
 143 pair among all enrolled pairs in a given space-time window. The denominator is constructed the
 144 same way, but without restriction on the spatial window. Therefore, $\tau > 1$ indicates that two en-
 145 rolees are more likely to be homotypic dengue cases if they fall within the specified space-time
 146 window than if they fall anywhere across the study area. While we will refer to the τ -statistic as
 147 an odds ratio, there are subtle differences in this estimator that do not make it equivalent to the
 148 standard epidemiological odds ratio parameter.

149 The estimator is first applied to the overall study area, naive to local *w*Mel intervention status,
 150 with a time window of 30 days. Given that the intervention and untreated clusters are interspersed
 151 across the city, this serves as a global test to identify whether there is any evidence of spatial
 152 dependency in dengue cases overall before disaggregating by intervention arm. We find evidence
 153 of spatial dependence among homotypic cases occurring within 30 days at distances up to 300m,
 154 with the greatest relative odds of homotypic cases occurring within 50m of an index case (Figure 3).
 155 The odds that an individual enrolled within 30 days and 50m of an index case is a homotypic dengue
 156 case is 10.5-fold (95% CI: 5.6, 17.5) higher than for any individual with illness onset occurring within
 157 30 days across the entire study area.

158 We then employ the τ -statistic to compare whether this spatial dependence in dengue cases
 159 differs between the untreated and *w*Mel-treated intervention arms by considering each of the 24
 160 randomized clusters as independent units and estimating the small-scale spatiotemporal depen-
 161 dence of homotypic dengue cases within each cluster. Figure 4 shows the cluster-level estimates
 162 of the τ -statistic, together with the arm-level estimates of spatial dependence (calculated via a

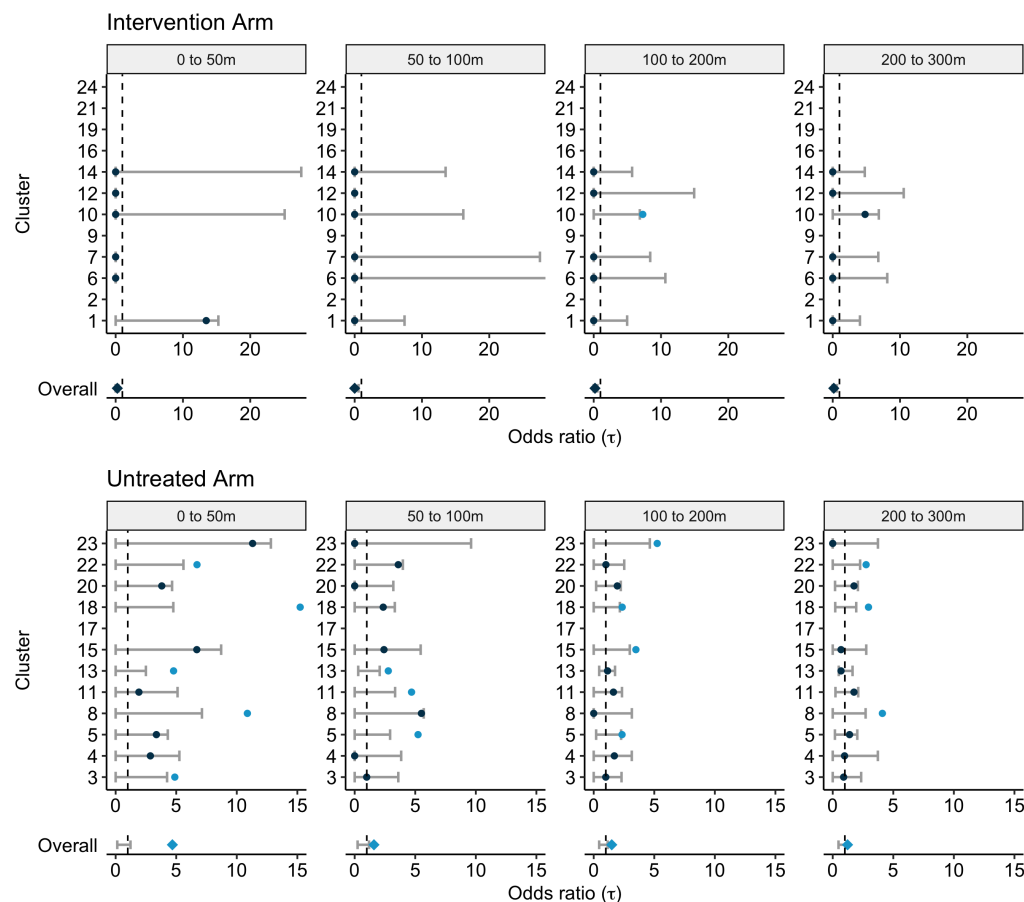


Figure 4. Cluster-specific and pooled arm-level estimates of the τ -statistic (points) and 95% CIs on the null distribution (error bar) generated from 1,000 simulations where the location at which a case occurs is randomly permuted within each cluster. Each panel displays the estimated spatial dependence for homotypic case pairs with illness onset occurring within 30 days and resident within a given distance interval (meters) from each other. Statistically significant dependence is present when the point estimate falls outside of the 95% CIs of the null distribution and, for improved visibility, is marked by the light blue points. The overall point estimate for each trial arm is found by taking the geometric mean of the cluster-level estimates and is then compared against the 95% CIs of the null distribution of the permuted geometric mean.

163 modified geometric mean: Materials and Methods) and 95% CI on the permutation-based null dis-
 164 tribution (bars). The cluster-specific results highlight the sparsity of homotypic case pairs in the
 165 intervention arm. Six of the twelve clusters randomized to the intervention arm (clusters 2, 9, 16,
 166 19, 21, 24) and only one of the twelve untreated clusters (cluster 17) had no homotypic dengue
 167 cases enrolled within 30 days of an index dengue case. As such, the τ -statistic is inestimable within
 168 these clusters.

169 Even when there is data to support estimation, the estimated 95% CIs of the permutation-based
 170 null distributions produce expansive limits with no significant results detected in any intervention
 171 clusters, except for cluster 10 at a distance of 100 to 200m. It is worth noting that there were only
 172 two pairs of homotypic cases (one pair with DENV1 and one pair with DENV3) observed within 30
 173 days of each other in cluster 10. In the intervention arm overall, there is no evidence of significant
 174 small-scale spatiotemporal dependence at any distance examined. In contrast, five of 11 untreated
 175 clusters showed significant evidence of spatiotemporal dependence within 50m of an index resi-
 176 dence. For the untreated arm overall, there is evidence of spatiotemporal dependence up to a
 177 distance of 300m, with the greatest relative odds of a homotypic case occurring for enrolled indi-
 178 viduals with residences within 50m of an index case ($\tau(0, 50) = 4.7$; 95% CI of the null distribution:
 179 0.1, 1.2).

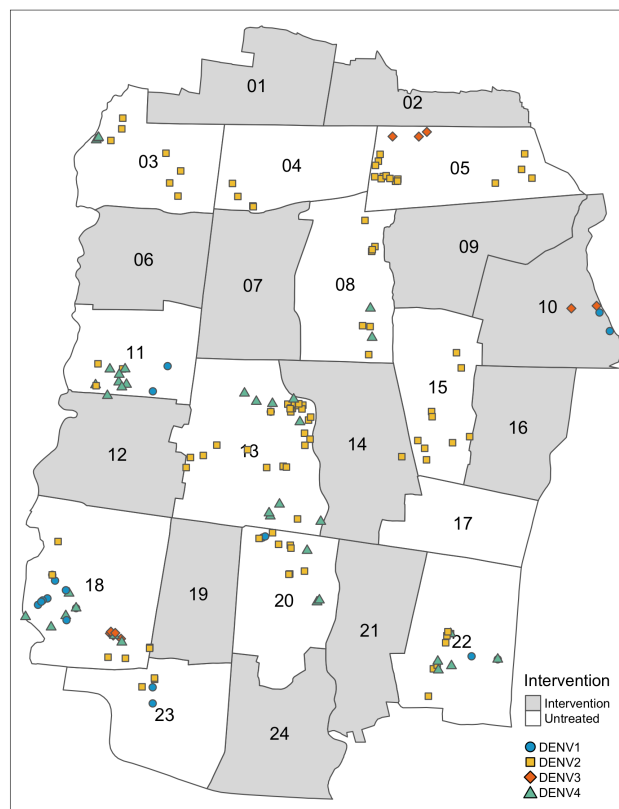


Figure 5. Residential locations of the 160 enrolled serotyped dengue cases involved in homotypic pairs with residences within 300m and illness onset within 30 days, including pairs that cross cluster boundaries.

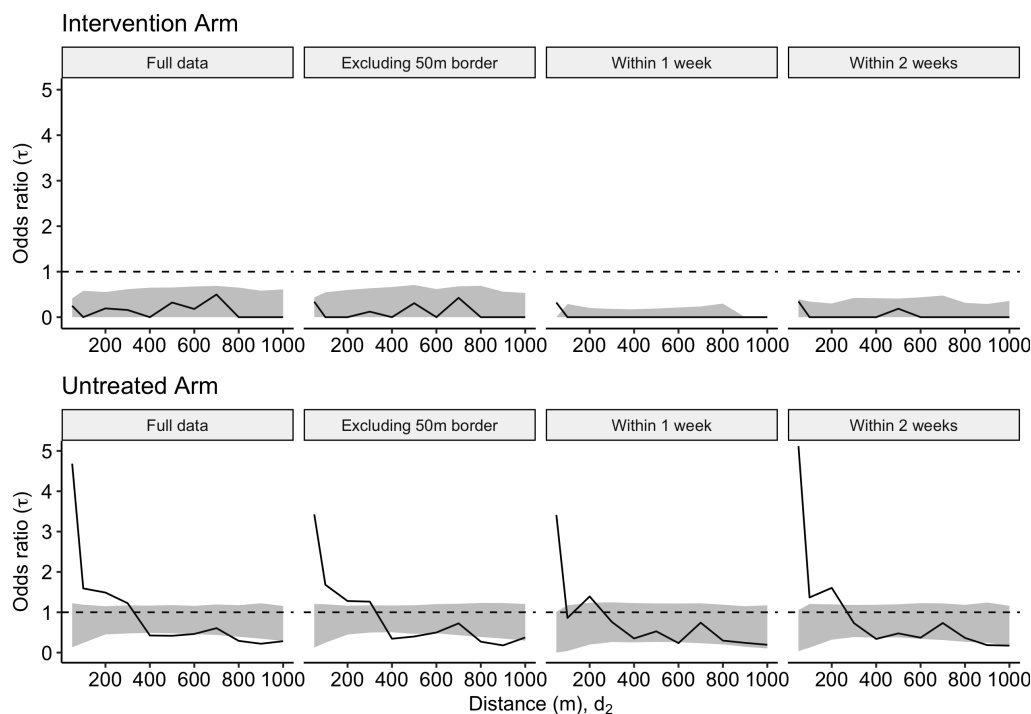


Figure 6. Sensitivity analyses and comparison with the primary analysis ('Full data'). Estimated geometric mean odds ratio, τ , comparing the odds of a homotypic dengue case pair within the distance interval (d_1, d_2) versus the odds of a homotypic dengue case pair at any distance across the entire study area for 1) the full dataset, 2) the dataset excluding those within 50m of a cluster border, 3) participant pairs with illness onset occurring within 1 week of each other, and 4) participant pairs with illness onset occurring within 2 weeks of each other. The shaded area is the 95% CI of the permutation-based null distribution.

180 The disruption of spatiotemporal clustering of dengue cases by wMel is underscored in Figure
 181 5, which shows the geolocated residences of the 160 dengue cases that form homotypic case pairs
 182 with illness onset within 30 days and residences within 300m of each other. In Figure 5, unlike in
 183 the cluster-level τ -statistic analysis, cluster boundaries have been ignored so that all homotypic
 184 case pairs within the given space-time window are displayed. The vast majority of dengue cases
 185 involved in homotypic case pairs fall within the untreated regions. As described previously, only
 186 two case pairs fall fully in an untreated cluster, namely cluster 10.

187 Sensitivity analysis

188 The test-negative controls were enrolled after presenting with acute febrile illness and, as such,
 189 may exhibit their own spatial structure beyond that of the underlying healthcare-seeking popu-
 190 lation. As a sensitivity analysis, we performed the overall τ -statistic estimation excluding the test-
 191 negative controls, instead relying on homotypic and heterotypic dengue case pairs occurring within
 192 space-time windows as indicators of spatial dependence. There was no meaningful difference ob-
 193 served when test-negatives were included or excluded from estimation (Figure S1).

194 We additionally performed sensitivity analyses to account for potential contamination effects
 195 for residences near cluster boundaries and to examine the effects of applying differing temporal
 196 thresholds. The results are presented in Figure 6 where each panel displays the geometric mean
 197 and permutation-based 95% CIs of the null distribution of the geometric mean. The "Full data"
 198 panels display the same information as the "Overall" rows of Figure 4 and are included for ease of
 199 comparison with the sensitivity results. When individuals residing within 50m of any cluster bound-
 200 ary are excluded from the analysis, the magnitude of the estimated τ -statistic in the untreated arm
 201 decreases, but remains significant up to 300m, as observed in the primary analysis. When the win-
 202 dows of time from illness onset of an index dengue case was decreased from 30 days to seven days,

203 there is evidence of spatial dependence up to 50m, and potentially from 100-200m, from an in-
204 dex case in the untreated arm. Finally, when an interval of 2 weeks from illness onset of an index
205 dengue case is used, there is evidence of spatial dependence up to 200m in the untreated arm.
206 There remains no evidence of small-scale spatial dependence in the intervention arm under any
207 of these sensitivity settings.

208 Discussion

209 We show here that successful introgression of *wMel* into the local *Aedes aegypti* mosquito popu-
210 lation disrupts the focal transmission of dengue virus. The intention-to-treat analysis of a cluster
211 randomised controlled trial of *wMel* deployments in Yogyakarta, Indonesia previously reported a
212 77% reduction in dengue incidence in *wMel*-treated areas (*Utarini et al., 2021*). The findings re-
213 ported here from an exploratory secondary analysis of these trial data demonstrate an absence of
214 spatiotemporal clustering among the 53 serotyped dengue cases that did occur in *wMel*-treated
215 areas. These data suggest an even larger *wMel* intervention effect than measured in the primary
216 analysis of the AWED trial, and raise expectations that area-wide coverage of Yogyakarta with *wMel*
217 could result in near elimination of local DENV transmission.

218 In six of the twelve clusters where *wMel* deployments occurred, no homotypic dengue cases
219 occurred in any 30-day window throughout the 27 months following *wMel* releases. Among the re-
220 maining six *wMel*-treated clusters where the spatial dependence of homotypic dengue case pairs
221 was estimable, only one cluster on the northeast border of the trial site had any homotypic dengue
222 case pairs that could plausibly have been transmission-related. In contrast, in untreated areas we
223 found evidence of clustering in dengue incidence within space-time windows of 30 days and 300m,
224 with increasing spatiotemporal dependence within decreasing intervals of space (up to 50m) and
225 time (up to 7 days). The lack of spatiotemporal clustering among the dengue cases resident in *wMel*-
226 treated areas of Yogyakarta does not preclude the possibility that infection occurred in the clus-
227 ter of residence, and that other transmission-related infections went undetected or were asymp-
228 tomatic. However, since the sensitivity of dengue case detection can be expected to be equivalent,
229 on average, between treated and untreated arms of the AWED trial, these findings strongly sug-
230 gest that the dengue cases in the intervention clusters may have acquired their infection outside
231 of their cluster of residence. Information collected in the AWED trial on the travel history of partic-
232 ipants during the ten days prior to illness onset, together with planned genomic analysis of DENV
233 detected in trial participants, will support a more direct assessment of the potential transmission-
234 relatedness between dengue cases detected in intervention clusters and those resident elsewhere
235 in the trial area.

236 The distortion by *wMel* of spatial patterns in dengue case occurrence is evident in the visual-
237 izations of the dengue case time series aggregate over 27 months, even before considering the
238 two key components in potential transmission-relatedness: serotype and case onset date. At an
239 aggregate area level, despite being completely intermixed with the untreated clusters, the cluster-
240 specific test-positive fraction estimates for *wMel*-treated clusters are all considerably lower than
241 the test-positive fractions in the untreated clusters, with the exception of intervention cluster 10.
242 The results of the kernel estimator, which does not differentiate between serotype or take artifi-
243 cial study boundaries into consideration, suggest that the areas where dengue test-positive febrile
244 illness is highest are located in untreated clusters and tend to extend across borders with other un-
245 treated areas rather than borders with intervention clusters. When serotype and case onset date
246 are accounted for via the spatial-temporal clustering τ -statistic, this observation is strengthened
247 further.

248 The fine scale spatial clustering of dengue cases in untreated areas of Yogyakarta closely mir-
249 rors findings reported by others from Vietnam (*Hoang Quoc et al., 2016*), Thailand (*Aldstadt et al.,*
250 *2012; Hoang Quoc et al., 2016; Salje et al., 2012*), Australia (*Vazquez-Prokopec et al., 2010*), Peru
251 (*Stoddard et al., 2013*), and Taiwan (*Kan et al., 2008*) despite differences in analysis methods, eco-
252 logical setting and human population characteristics. We observed strongest clustering of dengue

253 cases within 50m and 7 days, declining with increasing spatial and temporal distance, which is
254 supportive of focal DENV transmission within households and the immediate neighbourhood in
255 the absence of *Wolbachia*. Similar focal clustering has been reported from Thailand, where the au-
256 thors found strongest evidence of clustering at a 15-17 day interval and distances less than 200m
257 (*Aldstadt et al., 2012*). These spatiotemporal patterns provide the rationale for the common ap-
258 proach of applying conventional vector control interventions, primarily insecticide spraying, in a
259 reactive manner around the households of notified cases that cluster in space and time. In Yo-
260 gyakarta, notification of hospitalised dengue cases to the District Health Office with evidence of
261 local transmission (i.e. additional confirmed or suspected dengue cases within 2 weeks and 100m)
262 will usually trigger perifocal insecticide fogging, with malathion most commonly used in recent
263 years, and application of a larvicide such as pyriproxyfen to water containers. Insecticide resis-
264 tance and insecticide penetration to indoor resting places is a challenge, and the limited ability
265 of these approaches to meaningfully impact dengue virus transmission is evidenced by the high
266 baseline dengue burden and paediatric seroprevalence in Yogyakarta (*Indriani et al., 2018*), and
267 recurring dengue outbreaks in other locations where large efforts are expended on *Aedes* vector
268 control (*Hapuarachchi et al., 2016*).

269 One of the strengths of the *wMel* method for dengue control is its efficacy against the four
270 DENV serotypes (*Utarini et al., 2021*). However, this results in very little case data for the estima-
271 tion of spatiotemporal dependence. Only 67 virologically confirmed dengue cases were enrolled
272 in the intervention clusters throughout the 27-month AWED study, of which, only 53 had identifi-
273 able DENV serotypes. When examining the spatiotemporal dynamics of transmission, the lack of
274 potentially transmission-related dengue is itself a critical finding, despite being difficult to repre-
275 sent statistically. The completion of *wMel* deployments throughout the AWED untreated clusters
276 in January 2021 is expected to result in an even greater impact on dengue in Yogyakarta in com-
277 ing years, and even raises the prospect of local elimination. Monitoring progress towards dengue
278 elimination in Yogyakarta will require the development of an appropriate surveillance framework
279 and statistical methods for demonstrating absence of disease, which differ from those used when
280 disease is present (*Stresman et al., 2017*).

281 A considerable hurdle in spatiotemporal analyses is the identification and geolocation of the un-
282 derlying population at risk. Cross-sectional surveys are of limited utility for examining spatiotempo-
283 ral patterns in the occurrence of self-limiting acute infections like dengue, as virological markers
284 of acute infection are short-lived and detection of antibody is not informative about the timing
285 of infection. Prospective cohort studies with clinical or serological endpoints are expensive, time-
286 consuming and logistically complicated to carry out, and their sensitivity for detection of case clus-
287 tering may be limited unless very large. As such, many studies rely on passively collected case data
288 and compare these counts against “total population” census estimates, introducing room for bias
289 when the total population is not the true population at risk because it includes individuals with
290 immunity as well as those whose healthcare-seeking behaviour may preclude their detection in
291 facility-based data sources. The test-negative design provides a new framework for simultaneously
292 sampling cases and controls from the underlying at-risk, healthcare-seeking population. Method-
293 ological research is in progress to further explore the benefits of this design for spatiotemporal
294 analyses of infectious disease.

295 The use of the small-scale spatial dependence estimator τ in the context of the test-negative
296 design requires further methodological assessment. The authors of the method have pointed out
297 that both the numerator and the denominator are dependent on the spatiotemporal distribution
298 of cases, and importantly, controls (*Lessler et al., 2016; Salje et al., 2012*). The controls in the
299 AWED study may not be a random sample from the underlying spatial distribution of the popu-
300 lation. If there are other processes driving spatial dependence in the test-negatives other than
301 the spatial distribution of the underlying population (e.g., transmission of other pathogens), then
302 this would affect the calculation and interpretation of the τ -statistic. As such, the test-negatives
303 more likely represent a random sample from the care-seeking population. The estimates of the

304 τ -statistic should then be interpreted as the spatial dependence in homotypic dengue cases *over*
305 *and above* any spatial patterns in the underlying health-care seeking population that gave rise to
306 the dengue cases. However, as demonstrated in Figure S1, the conclusions of spatial dependence
307 do not change upon the exclusion of test-negatives from the estimation process.

308 Dengue was a relatively rare outcome in the AWED study sample, present in only 6% of individ-
309 uals in the analysis set. As such, using bootstrap resampling as the basis for statistical inference
310 resulted in two complications. First, previous work has demonstrated that blocked bootstrap re-
311 sampling of spatial data is generally a more appropriate approach to inference of spatial estimators
312 as it retains a level of spatial correlation among observed case locations that is lost when resam-
313 pling individuals (*Loh and Stein, 2004*). The performance of the blocked bootstrap has yet to be
314 explored in the context of the τ -statistic for small-scale spatial dependence. Second, resampling
315 with replacement at the individual-level when there are overwhelmingly more negative controls
316 than cases results in some bootstrap resamples devoid of any cases. Given the manner in which
317 cases and controls are ascertained in the test-negative design, resampling conditional on outcome
318 is a problematic solution to this problem. Instead, we rely on permutation methods for calculating
319 statistical significance, which only requires a reshuffling rather than a resampling of the dataset
320 (*Lessler et al., 2016*). Further methodological development in estimation and inference for the
321 τ -statistic is needed in the rare-disease, test-negative design setting.

322 In addition, there is scope for further exploration of the transmission dynamics of DENV in-
323 fection in the presence of *wMel*, using other spatiotemporal modelling approaches. For example,
324 conditional intensity models may provide greater insight into the transmission kernel under both
325 intervention and untreated conditions. Such an approach would allow for transmission occurring
326 across borders of intervention and control areas.

327 The current work examines DENV transmission under a binary intervention status based on
328 household residence. This serves as only a proxy of an individual's true intervention experience.
329 The presence of *wMel* in the monitored mosquito populations was strikingly homogeneous within
330 the intervention areas, but, by the second year of the trial, was also detected at the edges of the
331 untreated cluster borders (*Utarini et al., 2021*). Additionally, human movement could affect an
332 individual's risk of infection and transmission (*Stoddard et al., 2013*). AWED participants' geo-
333 located movements over the ten days prior to illness onset were recorded at enrolment, providing
334 a unique opportunity to gain further insight into the extent of human mobility and its role in trans-
335 mission. Incorporating such fine-scale spatial and temporal data will allow for the investigation of
336 DENV transmission beyond the proxies of geolocated residence and intervention assignment.

337 This work provides the first report of spatiotemporal clustering of dengue in Yogyakarta in the
338 absence of *wMel*, replicating others' reports from multiple endemic settings. Importantly, it shows
339 that in areas randomly allocated to *wMel* deployments, the sustained introgression of *wMel* into
340 the local *Ae. aegypti* population successfully disrupts the focal transmission of dengue virus.

341 **Materials and Methods**

342 **Data source**

343 Data was collected during the Applying *Wolbachia* to Eliminate Dengue (AWED) trial – a parallel,
344 two-arm, cluster-randomized test-negative design study carried out in Yogyakarta, Indonesia from
345 January 2018 to March 2020. The trial design and results have been described elsewhere (*Anders*
346 *et al., 2020; Utarini et al., 2021*). Written informed consent for participation in the clinical compo-
347 nent of the trial was obtained from all the participants or from a guardian if the participant was a
348 minor. In addition, participants 13 to 17 years of age gave written informed assent. The trial was
349 conducted in accordance with the International Council for Harmonisation guidelines for Good Clin-
350 ical Practice and was approved by the human research ethics committees at Universitas Gadjah
351 Mada and Monash University (*Anders et al., 2020*). Briefly, the city was divided into 24 contiguous
352 clusters, twelve of which were randomly assigned to receive *wMel*-infected *Aedes aegypti* releases.

353 Routine vector control activities continued throughout the study area. Individuals 3 - 45 years old
354 presenting to government primary care clinics with acute febrile illness who were resident in the
355 study area, had no localising symptoms suggestive of a non-dengue diagnosis, and had not been
356 enrolled within the previous 4 weeks were invited to enrol and their residence and places visited
357 during 10 days prior to illness onset were geolocated. A positive result in either dengue PCR or
358 NS1 antigen ELISA distinguished virologically-confirmed dengue cases from test-negative controls
359 (negative in DENV PCR, NS1 ELISA and IgM/IgG ELISA) and a subset of participants excluded from
360 analysis (negative in PCR and NS1 but positive in IgM/IgG, or with inconclusive diagnostic results).
361 The infecting serotype was determined for PCR-positive dengue cases.

362 Statistical Methods

363 Global analysis of spatial dependence

364 To characterize the small-scale spatiotemporal dependence of homotypic dengue cases, we em-
365 ploy a global measure, the τ -statistic (*Salje et al., 2016*). This measure captures the overall ten-
366 dency of homotypic dengue cases to occur within specified space-time windows above and beyond
367 that observed in the enrolled study population due to secular factors (e.g., healthcare-seeking be-
368 haviour and environmental conditions). This method compares the odds that an enrolled pair of
369 individuals within a given time and distance, $\theta(d_1, d_2)$, are homotypic dengue cases against the odds
370 that an enrolled pair of individuals within a given time but at any distance, $\theta(0, \infty)$, are homotypic
371 dengue cases (Equations 1, 2). As such, a pair of enrolled individuals i and j are considered to be
372 potentially transmission-related ($z_{ij} = 1$) if they have the same infecting DENV serotype and have
373 illness onset within a specified time window, and are otherwise assumed to be non-transmission
374 related ($z_{ij} = 0$). Specifically,

$$\tau(d_1, d_2) = \frac{\theta(d_1, d_2)}{\theta(0, \infty)}, \text{ where} \quad (1)$$

$$\theta(d_1, d_2) = \frac{\sum_i \sum_j \mathbb{1}_1(z_{ij} = 1, d_1 < d_{ij} < d_2)}{\sum_i \sum_j \mathbb{1}_1(z_{ij} = 0, d_1 < d_{ij} < d_2)}, \quad i \neq j \quad (2)$$

375 For Equation 2, the sums range over all test-positive and test-negative trial participants for the
376 overall estimate of the τ -statistic. For the cluster-specific estimates, the sums range over all cluster-
377 specific test-positive and test-negative trial participants.

378 Based on the observed spatial dependence in dengue cases reported previously in other set-
379 tings, we examine the τ -statistic at 0-50 meters and 50-100 meters, and then 100 meter intervals
380 up to a maximum distance of 1,000m from an index case.

381 Permutation-based null distributions from 1,000 reshuffles of the location data provided the
382 basis of hypothesis testing used to evaluate statistical significance of the estimated τ -statistic. For
383 the overall estimates of τ ignoring intervention assignment, this includes all enrolled test-negative
384 controls and test-positive cases with determinable DENV serotype. For the cluster-specific esti-
385 mates of τ , the location data of the cluster-specific test-negatives and test-positives are permuted
386 within each cluster. Bootstrapped confidence intervals, obtained by 1,000 random resamples of
387 the individual-level data, were obtained for the intervention-naive τ analysis. Bootstrapped confi-
388 dence intervals for the cluster-specific estimates of τ are not provided, given the sparsity of specific
389 serotype cases at the cluster-level. Arm-level estimates of the τ -statistic are based on a modified
390 geometric mean procedure common in settings with high frequencies of zeroes; the value of one
391 is added to each cluster-level estimate of τ before the estimation of the geometric mean and then
392 subtracted from the exponentiated result (*Cruz and Kreft, 2018*).

393 Software

394 All analyses were performed using R version 4.0.4 "Lost Library Book". General data cleaning and
395 management relied heavily on the "tidyverse" (*Wickham et al., 2019*), "here" (*Müller, 2017*), "rgdal"
396 (*Bivand et al., 2020*), and "geodist" (*Padgham and Sumner, 2020*) packages. Map visualizations

397 were constructed using “tmap” (*Tennekes, 2018*). Kernel smoothing estimation was performed
398 via “spatstat::relrisk” (*Baddeley and Turner, 2005*). The code used for this analysis is available at
399 the GitHub repository (<https://github.com/sddefault15/awed-spatial-temporal>) maintained by the first
400 author.

401 Acknowledgments

402 We thank Henrik Salje for his informative discussions around the use and interpretation of the τ
403 estimator. We acknowledge the contribution of all investigators in the AWED Study Group to the
404 implementation of the trial. We thank the leadership and residents of Yogyakarta for their support
405 and participation in the trial. We gratefully acknowledge the Tahija Foundation as funders of the
406 AWED trial, and the Wellcome Trust and the Bill and Melinda Gates Foundation, which provided
407 financial support to the World Mosquito Program.

408 References

- 409 **Achee NL**, Gould F, Perkins TA, Reiner RC, Morrison AC, Ritchie SA, Gubler DJ, Teysou R, Scott TW. A Critical
410 Assessment of Vector Control for Dengue Prevention. *PLoS Neglected Tropical Diseases*. 2015; 9(5):1–19.
411 doi: [10.1371/journal.pntd.0003655](https://doi.org/10.1371/journal.pntd.0003655).
- 412 **Aldstadt J**, Yoon IK, Tannitisupawong D, Jarman RG, Thomas SJ, Gibbons RV, Uppapong A, Iamsirithaworn S,
413 Rothman AL, Scott TW, Endy T. Space-time analysis of hospitalised dengue patients in rural Thailand reveals
414 important temporal intervals in the pattern of dengue virus transmission. *Tropical Medicine and Interna-*
415 *tional Health*. 2012; 17(9):1076–1085. doi: [10.1111/j.1365-3156.2012.03040.x](https://doi.org/10.1111/j.1365-3156.2012.03040.x).
- 416 **Anders KL**, Indriani C, Ahmad RA, Tantowijoyo W, Arguni E, Andari B, Jewell NP, Dufault SM, Ryan PA, Tana-
417 mas SK, Rancès E, O’Neill SL, Simmons CP, Utarini A. Update to the AWED (Applying Wolbachia to Eliminate
418 Dengue) trial study protocol: A cluster randomised controlled trial in Yogyakarta, Indonesia. *Trials*. 2020;
419 21(1):1–5. doi: [10.1186/s13063-020-04367-2](https://doi.org/10.1186/s13063-020-04367-2).
- 420 **Anders KL**, Nga LH, Thuy NTV, Ngoc TV, Tam CT, Tai LTH, Truong NT, Duyen HTL, Trung VT, Kien DTH, Wolbers
421 M, Wills B, Chau NVV, Tho ND, Simmons CP. Households as Foci for Dengue Transmission in Highly Urban
422 Vietnam. *PLoS Neglected Tropical Diseases*. 2015; 9(2):1–14. doi: [10.1371/journal.pntd.0003528](https://doi.org/10.1371/journal.pntd.0003528).
- 423 **Baddeley A**, Turner R. spatstat: An R Package for Analyzing Spatial Point Patterns. *Journal of Statistical Software*.
424 2005; 12(6):1–42. <http://www.jstatsoft.org/v12/i06/>.
- 425 **Bhatt S**, Gething PW, Brady OJ, Messina JP, Farlow AW, Moyes CL, Drake JM, Brownstein JS, Hoen AG, Sankoh O,
426 Myers MF, George DB, Jaenisch T, Wint GRW, Simmons CP, Scott TW, Farrar JJ, Hay SI. The global distribution
427 and burden of dengue. *Nature*. 2013; <https://www.nature.com/articles/nature12060.pdf>, doi: [10.1038/nature12060](https://doi.org/10.1038/nature12060).
- 429 **Bivand R**, Keitt T, Rowlingson B. rgdal: Bindings for the ‘Geospatial’ Data Abstraction Library; 2020, <https://cran.r-project.org/package=rgdal>.
- 431 **Bowman LR**, Donegan S, McCall PJ. Is Dengue Vector Control Deficient in Effectiveness or Evidence?: Sys-
432 tematic Review and Meta-analysis. *PLoS Neglected Tropical Diseases*. 2016; 10(3):1–24. doi: [10.1371/journal.pntd.0004551](https://doi.org/10.1371/journal.pntd.0004551).
- 434 **Cruz RD**, Kreft JU. Geometric mean extension for data sets with zeros. *arXiv*. 2018; .
- 435 **Dutra HLC**, Rocha MN, Dias FBS, Mansur SB, Caragata EP, Moreira LA. Wolbachia Blocks Currently Circulating
436 Zika Virus Isolates in Brazilian *Aedes aegypti* Mosquitoes. *Cell Host and Microbe*. 2016; 19(6):771–774. <https://dx.doi.org/10.1016/j.chom.2016.04.021>, doi: [10.1016/j.chom.2016.04.021](https://doi.org/10.1016/j.chom.2016.04.021).
- 438 **Hapuarachchi HC**, Koo C, Rajarethinam J, Chong CS, Lin C, Yap G, Liu L, Lai YL, Ooi PL, Cutter J, et al. Epidemic
439 resurgence of dengue fever in Singapore in 2013–2014: a virological and entomological perspective. *BMC*
440 *infectious diseases*. 2016; 16(1):1–13.
- 441 **Hoang Quoc C**, Henrik S, Isabel RB, In-Kyu Y, Chau NVV, Hung NT, Tuan HM, Lan PT, Willis B, Nisalak A, Kalaya-
442 narooj S, Cummings DAT, Simmons CP. Synchrony of Dengue Incidence in Ho Chi Minh City and Bangkok.
443 *PLoS Neglected Tropical Diseases*. 2016; 10(12):1–18. doi: [10.1371/journal.pntd.0005188](https://doi.org/10.1371/journal.pntd.0005188).

- 444 **van den Hurk AF**, Hall-Mendelin S, Pyke AT, Frentiu FD, McElroy K, Day A, Higgs S, O'Neill SL. Impact of Wol-
445 bachia on Infection with Chikungunya and Yellow Fever Viruses in the Mosquito Vector *Aedes aegypti*. *PLoS*
446 *Neglected Tropical Diseases*. 2012; 6(11). doi: [10.1371/journal.pntd.0001892](https://doi.org/10.1371/journal.pntd.0001892).
- 447 **Indriani C**, Ahmad RA, Wiratama BS, Arguni E, Supriyati E, Sasmono RT, Kisworini FY, Ryan PA, O'Neill SL, Sim-
448 mons CP, Utarini A, Anders KL. Baseline characterization of dengue epidemiology in Yogyakarta City, Indone-
449 sia, before a randomized controlled trial of wolbachia for arboviral disease control. *American Journal of*
450 *Tropical Medicine and Hygiene*. 2018; 99(5):1299–1307. doi: [10.4269/ajtmh.18-0315](https://doi.org/10.4269/ajtmh.18-0315).
- 451 **Indriani C**, Tantowijoyo W, Rancès E, Andari B, Prabowo E, Yusdi D, Ansari MR, Wardhana DS, Supriyati E,
452 Nurhayati I, Ernesia I, Setyawan S, Fitriana I, Arguni E, Amelia Y, Ahmad RA, Jewell NP, Dufault SM, Ryan
453 PA, Green BR, et al. Reduced dengue incidence following deployments of Wolbachia-infected *Aedes aegypti*
454 in Yogyakarta, Indonesia: A quasi-experimental trial using controlled interrupted time series analysis. *Gates*
455 *Open Research*. 2020; 4. doi: [10.1101/2020.03.15.20036566](https://doi.org/10.1101/2020.03.15.20036566).
- 456 **Kan CC**, Lee PF, Wen TH, Chao DY, Wu MH, Lin NH, Huang SYJ, Shang CS, Fan IC, Shu PY, Huang JH, King CC,
457 Pai L. Two clustering diffusion patterns identified from the 2001-2003 dengue epidemic, Kaohsiung, Taiwan.
458 *American Journal of Tropical Medicine and Hygiene*. 2008; 79(3):344–352. doi: [10.4269/ajtmh.2008.79.344](https://doi.org/10.4269/ajtmh.2008.79.344).
- 459 **Lessler J**, Salje H, Grabowski MK, Cummings DAT. Measuring spatial dependence for infectious disease epi-
460 demiology. *PLoS ONE*. 2016; 11(5):1–13. <http://dx.doi.org/10.1371/journal.pone.0155249>, doi: [10.1371/jour-
461 nal.pone.0155249](https://doi.org/10.1371/journal.pone.0155249).
- 462 **Loh J**, Stein M. Bootstrapping a spatial point process. *Statistica Sinica*. 2004; p. 69–101.
- 463 **Mammen MP**, Pimgate C, Koenraadt CJM, Rothman AL, Aldstadt J, Nisalak A, Jarman RG, Jones JW, Srikiatkha-
464 chorn A, Ypil-Butac CA, Getis A, Thammapalo S, Morrison AC, Libraty DH, Green S, Scott TW. Spatial and
465 temporal clustering of dengue virus transmission in Thai villages. *PLoS Medicine*. 2008; 5(11):1605–1616.
466 doi: [10.1371/journal.pmed.0050205](https://doi.org/10.1371/journal.pmed.0050205).
- 467 **Moreira LA**, Iturbe-Ormaetxe I, Jeffery JA, Lu G, Pyke AT, Hedges LM, Rocha BC, Hall-Mendelin S, Day A, Riegler
468 M, Hugo LE, Johnson KN, Kay BH, McGraw EA, van den Hurk AF, Ryan PA, O'Neill SL. A Wolbachia Symbiont
469 in *Aedes aegypti* Limits Infection with Dengue, Chikungunya, and Plasmodium. *Cell*. 2009; 139(7):1268–1278.
470 doi: [10.1016/j.cell.2009.11.042](https://doi.org/10.1016/j.cell.2009.11.042).
- 471 **Müller K**. here: A Simpler Way to Find Your Files; 2017, <https://cran.r-project.org/package=here>.
- 472 **Nazni WA**, Hoffmann AA, NoorAfizah A, Cheong YL, Mancini MV, Golding N, Kamarul GMR, Arif MAK, Thohir H,
473 NurSyamimi H, ZatilAqmar MZ, NurRuqqayah M, NorSyazwani A, Faiz A, Irfan FRMN, Rubaaini S, Nuradila N,
474 Nizam NMN, Irwan SM, Endersby-Harshman NM, et al. Establishment of Wolbachia Strain wAlBb in Malaysian
475 Populations of *Aedes aegypti* for Dengue Control. *Current Biology*. 2019; 29(24):4241–4248.e5. [https://doi.
476 org/10.1016/j.cub.2019.11.007](https://doi.org/10.1016/j.cub.2019.11.007), doi: [10.1016/j.cub.2019.11.007](https://doi.org/10.1016/j.cub.2019.11.007).
- 477 **O'Neill SL**, Ryan PA, Turley AP, Wilson G, Retzki K, Iturbe-Ormaetxe I, Dong Y, Kenny N, Paton CJ, Ritchie SA,
478 Brown-Kenyon J, Stanford D, Wittmeier N, Jewell NP, Tanamas SK, Anders KL, Simmons CP. Scaled deploy-
479 ment of Wolbachia to protect the community from dengue and other aedes transmitted arboviruses. *Gates*
480 *Open Research*. 2018; 2:1–29. doi: [10.12688/gatesopenres.12844.3](https://doi.org/10.12688/gatesopenres.12844.3).
- 481 **Padgham M**, Sumner MD. geodist: Fast, Dependency-Free Geodesic Distance Calculations; 2020, [https://cran.
482 r-project.org/package=geodist](https://cran.r-project.org/package=geodist).
- 483 **Pereira TN**, Rocha MN, Sucupira PHF, Carvalho FD, Moreira LA. Wolbachia significantly impacts the vector
484 competence of *Aedes aegypti* for Mayaro virus. *Scientific Reports*. 2018; 8(1):1–9. [http://dx.doi.org/10.1038/
485 s41598-018-25236-8](http://dx.doi.org/10.1038/s41598-018-25236-8), doi: [10.1038/s41598-018-25236-8](https://doi.org/10.1038/s41598-018-25236-8).
- 486 **Pinto SB**, Riback TIS, Sylvestre G, Costa G, Peixoto J, Dias FBS, Tanamas SK, Simmons CP, Dufault SM, Ryan PA,
487 O'Neill SL, Muzzi FC, Kutcher S, Montgomery J, Green BR, Smithyman R, Eppinghaus A, Saraceni V, Durovni
488 B, Anders KL, et al. Effectiveness of Wolbachia-infected mosquito deployments in reducing the incidence
489 of dengue and other *Aedes*-borne diseases in Niterói, Brazil: a quasi-experimental study. *PLOS Neglected*
490 *Tropical Diseases*. 2021; (in revisi).
- 491 **Reiner RC**, Achee N, Barrera R, Burkot TR, Chadee DD, Devine GJ, Endy T, Gubler D, Hombach J, Kleinschmidt I,
492 Lenhart A, Lindsay SW, Longini I, Mondy M, Morrison AC, Perkins TA, Vazquez-Prokopec G, Reiter P, Ritchie
493 SA, Smith DL, et al. Quantifying the Epidemiological Impact of Vector Control on Dengue. *PLoS Neglected*
494 *Tropical Diseases*. 2016; 10(5):1–11. doi: [10.1371/journal.pntd.0004588](https://doi.org/10.1371/journal.pntd.0004588).

- 495 **Ryan PA**, Turley AP, Wilson G, Hurst TP, Retzki K, Brown-Kenyon J, Hodgson L, Kenny N, Cook H, Montgomery
496 BL, Paton CJ, Ritchie SA, Hoffmann AA, Jewell NP, Tanamas SK, Anders KL, Simmons CP, O'Neill SL. Estab-
497 lishment of wMel Wolbachia in *Aedes aegypti* mosquitoes and reduction of local dengue transmission in
498 Cairns and surrounding locations in northern Queensland, Australia. *Gates Open Research*. 2019; 3. doi:
499 [10.12688/gatesopenres.13061.1](https://doi.org/10.12688/gatesopenres.13061.1).
- 500 **Salje H**, Cummings DAT, Lessler J. Estimating infectious disease transmission distances using the overall
501 distribution of cases. *Epidemics*. 2016; 17:10–18. <http://dx.doi.org/10.1016/j.epidem.2016.10.001>, doi:
502 [10.1016/j.epidem.2016.10.001](https://doi.org/10.1016/j.epidem.2016.10.001).
- 503 **Salje H**, Lessler J, Berry IM, Melendrez MC, Endy T, Kalayanarooj S, A-nuegoonpipat A, Chanama S, Sangkijporn
504 S, Klungthong C, Thaisomboonsuk B, Nisalak A, Gibbons RV, Iamsirithaworn S, Macareo LR, In-Kyu Y, San-
505 garsang A, Jarman RG, Cummings DAT. Dengue diversity across spatial and temporal scales: Local structure
506 and the effect of host population size. *Science*. 2017; 1306(March):1302–1306. doi: [10.1126/science.aaj9384](https://doi.org/10.1126/science.aaj9384).
- 507 **Salje H**, Lessler J, Endy TP, Curriero FC, Gibbons RV, Nisalak A, Nimmannitya S, Kalayanarooj S, Jarman RG,
508 Thomas SJ, Burke DS, Cummings DAT. Revealing the microscale spatial signature of dengue transmission
509 and immunity in an urban population. *Proceedings of the National Academy of Sciences of the United States*
510 *of America*. 2012; 109(24):9535–9538. doi: [10.1073/pnas.1120621109](https://doi.org/10.1073/pnas.1120621109).
- 511 **Salje H**, Wesolowski A, Brown TS, Kiang MV, Berry IM, Lefrancq N, Fernandez S, Jarman RG, Ruchusatsawat
512 K, Iamsirithaworn S, Vandepitte WP, Suntarattiwong P, Read JM, Klungthong C, Thaisomboonsuk B, Engø-
513 Monsen K, Buckee C, Cauchemez S, Cummings DAT. Reconstructing unseen transmission events to infer
514 dengue dynamics from viral sequences. *Nature Communications*. 2021; 12(1):1–10. [http://dx.doi.org/10.](http://dx.doi.org/10.1038/s41467-021-21888-9)
515 [1038/s41467-021-21888-9](https://doi.org/10.1038/s41467-021-21888-9), doi: [10.1038/s41467-021-21888-9](https://doi.org/10.1038/s41467-021-21888-9).
- 516 **Stoddard ST**, Forshey BM, Morrison AC, Paz-Soldan VA, Vazquez-Prokopec GM, Astete H, Reiner RC, Vilcar-
517 romero S, Elder JP, Halsey ES, Kochel TJ, Kitron U, Scott TW. House-to-house human movement drives dengue
518 virus transmission. *Proceedings of the National Academy of Sciences of the United States of America*. 2013;
519 110(3):994–999. doi: [10.1073/pnas.1213349110](https://doi.org/10.1073/pnas.1213349110).
- 520 **Stresman G**, Cameron A, Drakeley C. Freedom from infection: confirming interruption of malaria transmission.
521 *Trends in parasitology*. 2017; 33(5):345–352.
- 522 **Tennekes M**. tmap: Thematic Maps in R. *Journal of Statistical Software*. 2018; 84(6):1–39. doi:
523 [10.18637/jss.v084.i06](https://doi.org/10.18637/jss.v084.i06).
- 524 **Utarini A**, Indriani C, Ahmad RA, Tantowijoyo W, Arguni E, Ansari MR, Supriyati E, Wardana DS, Meitika Y, Ernesia
525 I, et al. Efficacy of Wolbachia-infected mosquito deployments for the control of dengue. *New England Journal*
526 *of Medicine*. 2021; 384(23):2177–2186.
- 527 **Vazquez-Prokopec GM**, Kitron U, Montgomery B, Horne P, Ritchie SA. Quantifying the spatial dimension of
528 dengue virus epidemic spread within a tropical urban environment. *PLoS Neglected Tropical Diseases*. 2010;
529 4(12):1–14. doi: [10.1371/journal.pntd.0000920](https://doi.org/10.1371/journal.pntd.0000920).
- 530 **Walker T**, Johnson PH, Moreira LA, Iturbe-Ormaetxe I, Frentiu FD, McMeniman CJ, Leong YS, Dong Y, Axford
531 J, Kriesner P, Lloyd AL, Ritchie SA, O'Neill SL, Hoffmann AA. The wMel Wolbachia strain blocks dengue and
532 invades caged *Aedes aegypti* populations. *Nature*. 2011; 476(7361):450–455. doi: [10.1038/nature10355](https://doi.org/10.1038/nature10355).
- 533 **Wickham H**, Averick M, Bryan J, Chang W, D'Agostino McGowan L, Francois R, Golemund G, Hayes A, Henry
534 L, Hester J, Kuhn M, Lin Pedersen T, Miller E, Milton Bache S, Muller K, Ooms J, Robinson D, Paige Seidel D,
535 Spinu V, Takahashi K, et al. Welcome to the tidyverse. *Journal of Open Source Software*. 2019; 4(43):1686.
536 doi: [10.21105/joss.01686](https://doi.org/10.21105/joss.01686).
- 537 **Wilson AL**, Boelaert M, Kleinschmidt I, Pinder M, Scott TW, Tusting LS, Lindsay SW. Evidence-based vector
538 control? Improving the quality of vector control trials. *Trends in Parasitology*. 2015; 31(8):380–390. [http://](http://dx.doi.org/10.1016/j.pt.2015.04.015)
539 [dx.doi.org/10.1016/j.pt.2015.04.015](https://doi.org/10.1016/j.pt.2015.04.015), doi: [10.1016/j.pt.2015.04.015](https://doi.org/10.1016/j.pt.2015.04.015).