

Supplementary Materials

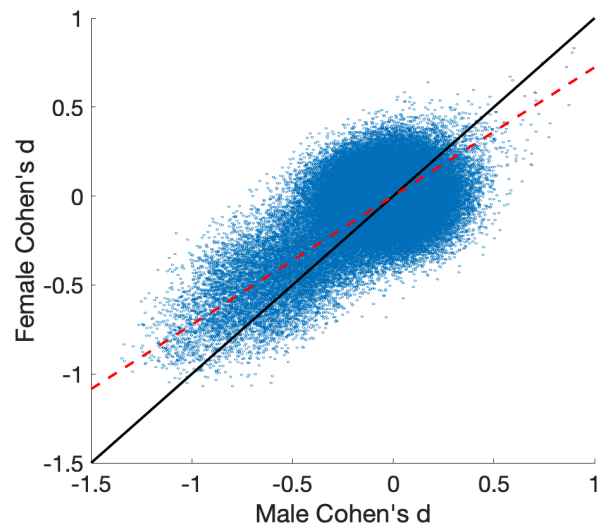


Figure 1 Sex stratified associations of *p.C282Y* homozygosity and T2 voxel intensities (Cohen's *d*), as scatter plot – each line represents a single voxel. Black line indicates $y=x$ (i.e. equal effect sizes). Red line indicates best fitting line (for points of at least moderate effects $x^2 + y^2 > 0.2$), $\beta = 0.72$ indicating approximately a 28% reduction in T2 intensity brain associations for females compared to males.

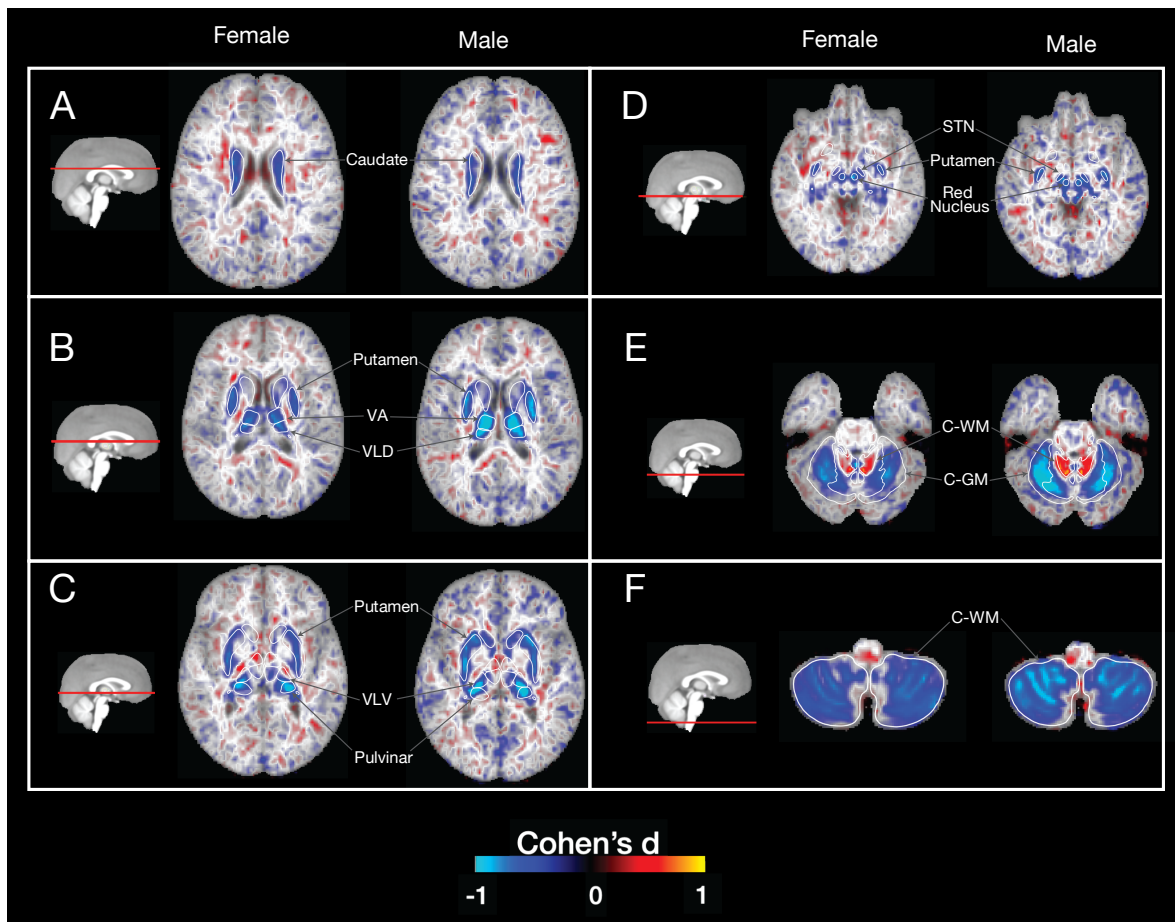
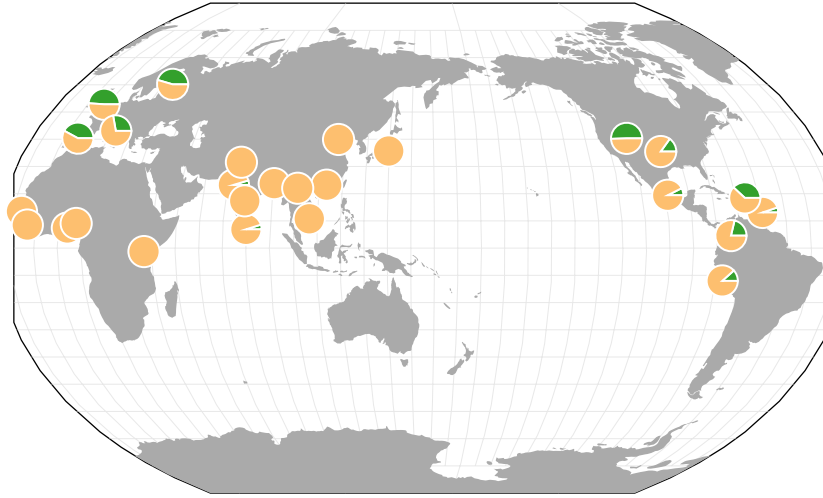


Figure 2 Maps of sex stratified associations of *p.C282Y* homozygosity and T2 voxel intensities (Cohen's *d*). Overall effects are larger in males vs females, with largest effects in males observed in the VA, VLD and pulvinar nuclei of the thalamus (B) as well as in the C-WM and C-GM (E). Abbreviations: VA – ventral anterior, VLD – ventral anterior dorsal, VLV – ventral anterior ventral, C-WM – cerebellum white matter, C-GM – cerebellum GM.

chr6:26093141 A/G



Frequency Scale = Proportion out of 0.1
The pie below represents a minor allele frequency of 0.025



Sample sizes below 30 become increasingly transparent to represent uncertain frequencies, i.e.



Figure 3 Global distribution of p.C282Y (rs1800562). Allele frequencies are highest in Europe (particularly northern Europe) and parts of north America. Map generated from the Geography of Genetic Variants Browser¹.

FreeSurfer 5.3 segmentation T1	Pauli, 2018 HCP T1 & T2	Najdenovska, 2018 HCP FODs
Amygdala (Amg)	Putamen (Pu)	Anterior (tA)
Hippocampus (Hipp)	Caudate (Ca)	Ventral anterior (tVA)
Putamen (Pu)	Nucleus accumbens (NAcc)	Mediodorsal (tMD)
Caudate (Ca)	Extended amygdala (EA)	Ventral-latero-ventral (tVLV)
Globus pallidus (GP)	Substantia nigra pars compacta (SNpc)	Ventral-latero-dorsal (tVLD)
Accumbens area (NAcc)	Substantia nigra pars reticulata (SNpr)	Central-latero-lateral-posterior-medial-pulvinar (tC)
Thalamus (Thal)	Red nucleus (RN)	Pulvinar (tP)
Ventral Diencephalon (VDC)	Parabrachial pigmented nucleus (PBP)	
	Hypothalamus (Hyp)	
	Mamillary nucleus (MN)	
	Subthalamic nucleus (STN)	

Table 1 Regions of interest (ROIs) labelled using 3 different methods. Column 1) automatic segmentation using FreeSurfer 5.3 applied to each subject's T1 image in atlas space²; Column 2) registration of the Pauli atlas of subcortical nuclei to the multispectral atlas³; Column 3) registration of the the Najdenovska thalamic nuclei atlas to our data⁴.

Males

Diagnosis	Total Controls	Total Cases	C282Y Cases	OR	CI_lower	CI_upper	P
Abnormalities of Gait and Mobility [R26]	219012	4557	26	0.964119	0.65175	1.4262	0.854872
Other Disorders of Nervous System [G90-99]	219737	3832	33	1.5081	1.06499	2.13558	0.02063
Parkinson's Disease [G20]	221638	1931	20	1.78188	1.13941	2.78661	0.011341
Essential Tremor [G25]	222688	881	10	1.92304	1.02705	3.6007	0.0410158
Movement Disorders [G20-26]	220636	2933	31	1.8162	1.26605	2.60542	0.00118983
Movement and Other Disorders of the Nervous Sy...	217030	6539	61	1.63773	1.26297	2.12371	0.00019852

Females

Diagnosis	Total Controls	Total Cases	C282Y Cases	OR	CI_lower	CI_upper	P
Abnormalities of Gait and Mobility [R26]	260493	4226	31	1.16012	0.810591	1.66038	0.41681
Other Disorders of Nervous System [G90-99]	260857	3862	25	1.06932	0.719118	1.59005	0.740586
Parkinson's Disease [G20]	263551	1168	6	0.79401	0.354918	1.77633	0.574492
Essential Tremor [G25]	263662	1057	9	1.34698	0.696958	2.60323	0.375601
Movement Disorders [G20-26]	262280	2439	17	1.09684	0.678124	1.77411	0.706349
Movement and Other Disorders of the Nervous Sy...	258589	6130	40	1.05775	0.771525	1.45016	0.727282

Table 2 Regression tables results for associating C282Y homozygote (+/+) cases with diagnoses of different neurological disorders. Models were fit separately for males and females.

Bibliography

1. Marcus, J. H. & Novembre, J. Visualizing the geography of genetic variants. *Bioinformatics* **33**, 594–595 (2017).
2. Fischl, B. *et al.* Whole brain segmentation: Automated labeling of neuroanatomical structures in the human brain. *Neuron* **33**, 341–355 (2002).
3. Pauli, W. M., Nili, A. N. & Michael Tyszka, J. Data Descriptor: A high-resolution probabilistic in vivo atlas of human subcortical brain nuclei. *Sci. Data* **5**, 1–13 (2018).
4. Najdenovska, E. *et al.* In-vivo probabilistic atlas of human thalamic nuclei based on diffusion-weighted magnetic resonance imaging. *Sci. Data* **5**, 1–11 (2018).