

## **A mucosal antibody response is induced by intra-muscular SARS-CoV-2 mRNA vaccination**

Salma Sheikh-Mohamed<sup>1</sup>, Gary Y.C. Chao<sup>\*1</sup>, Baweleta Isho<sup>1\*</sup>, Michelle Zuo<sup>\*1</sup>, George R. Nahass<sup>2</sup>, Rachel E. Salomon-Shulman<sup>2</sup>, Grace Blacker<sup>2</sup>, Mahya Fazel-Zarandi<sup>3</sup>, Bhavisha Rathod<sup>3</sup>, Karen Colwill<sup>3</sup>, Alainna Jamal<sup>3</sup>, Zhijie Li<sup>4</sup>, Keelia Quin de Launay<sup>5</sup>, Alyson Takaoka<sup>5</sup>, Julia Garnham-Takaoka<sup>5</sup>, Christina Fahim<sup>5</sup>, Aimee Paterson<sup>3</sup>, Angel Xinliu Li<sup>3</sup>, Nazrana Haq<sup>3</sup>, Shiva Barati<sup>3</sup>, Lois Gilbert<sup>3</sup>, Karen Green<sup>3</sup>, Mohammad Mozafarihashjin<sup>3</sup>, Philip Samaan<sup>6</sup>, Walter L. Siqueira<sup>7</sup>, Samira Mubareka<sup>6,8</sup>, Mario Ostrowski<sup>1,9,10</sup>, James M. Rini<sup>4,11</sup>, Olga L. Rojas<sup>12</sup>, Allison McGeer<sup>3</sup>, Irving L. Weissman<sup>2</sup>, Michal Caspi Tal<sup>2</sup>, Sharon Straus<sup>5,\*</sup>, Anne-Claude Gingras<sup>3,4,13,\*</sup>, Jennifer L. Gommerman<sup>1,13,\*</sup>

Correspondence to: [sharon.Straus@unityhealth.to](mailto:sharon.Straus@unityhealth.to), [gingras@lunenfeld.ca](mailto:gingras@lunenfeld.ca) and [jen.gommerman@utoronto.ca](mailto:jen.gommerman@utoronto.ca)

### **This PDF file includes:**

Materials and Methods  
Figs. S1 to S6  
Tables S1 to S5  
Supplementary References

## Materials and Methods

*Study Approvals:* The Mount Sinai Hospital Research Ethics Board (REB) granted approval for recruiting staff in long-term care facilities located in the Greater Toronto Area for blood and saliva collection and for conducting serum ELISAs at the Lunenfeld-Tanenbaum Research Institute (study number: 20-0339-E). The University of Toronto REB granted approval for subject recruitment to collect blood and saliva samples and for conducting saliva ELISAs (study number: 23901). The University of Saskatchewan REB granted approval for saliva sample collection during the pre-COVID era (study number: BIO-USask-1579).

*Recruitment and participants- LTCH cohort (Supplementary Table 1):* Staff working in Long-Term Care Homes (LTCHs) in Ontario were eligible to participate in the study if: (1) they were over the age of 18, (2) they were comfortable (a) reading and writing in English, (b) providing blood samples, and (c) sharing their COVID-19 diagnostic status with the study team. To invite LTCH staff to participate in the study, study staff approached the administrators and/or directors of LTCHs to assess if they were interested in being a participating site in the study. If they were interested, the administrators and/or directors shared information about the study with their staff and provided a deadline by which staff should opt-out if they did not want to be contacted about the study by a member of the study team. The LTCH administration then shared with the study team the contact information of all LTCH staff who did not opt-out of further communication about the study. The study team then contacted these staff by phone to invite them to participate in the study. This active recruitment strategy was paired with passive recruitment strategies, including having the participating LTCHs and/or relevant staff organizations share recruitment advertisements about the study, as well as having participants approach study staff when they were on-site for sample collection. A total of 12 LTCHs participated as a site in this study. Across these 12 sites, 647 individuals were invited to participate. Of these 647, a subset of individuals was not able to be reached by phone (n=242, 37%), were not eligible to participate (n=105, 16%), or refused to participate (n=131, 20%). Common reasons for participant ineligibility included being beyond 6 weeks after their 2<sup>nd</sup> dose of their COVID-19 vaccine or not being interested in receiving a COVID-19 vaccine. The most common reason for refusal to participate was lack of interest in being part of research. Finally, a subset of individuals (n=13) withdrew prior to their first sample collection, resulting in a final sample size of 156 participants.

*Recruitment of negative control subjects (Supplementary Table 2a):* Control saliva samples were collected from unexposed, asymptomatic individuals residing in an area of very low COVID-19 case numbers (Grey County, Ontario) and throughout the Greater Toronto Area (GTA) in April of 2020. Pre-COVID era samples were collected at the University of Saskatchewan.

*Recruitment and participants- COVID-19 acute and convalescent participants (Supplementary Table 2b):* Acute and convalescent serum and saliva samples were obtained from patients identified by surveillance of COVID-19 (confirmed by PCR; in- and out-patients) by the Toronto Invasive Bacterial Diseases Network in metropolitan Toronto and the regional municipality of Peel in south-central Ontario, Canada (REB studies #20-044 Unity Health Network, #02-0118-U/05-0016-C, Mount Sinai Hospital). Consecutive consenting patients admitted to four TIBDN hospitals were enrolled: these patients had serum and saliva collected at hospital admission, and survivors were asked to submit repeat samples at 4-12 weeks PSO. Consecutive out-patients diagnosed at the same 4 hospitals prior to March 15<sup>th</sup> and on a convenience sample of later days were approached for consent to collect serum and saliva at 4-12 weeks PSO. Patients were interviewed

and patient charts reviewed to determine age, sex, symptom onset date, and disease severity (mild, moderate, and severe).

*Recruitment and participants – Medical Sciences Building (MSB-1). Supplementary Table 4:* Pre-vaccination baseline, 2-3 weeks post-dose 1, 3 months post-dose 1- and 2-4-weeks post-dose 2 serum and saliva samples were obtained from an independently recruited cohort at the University of Toronto in Toronto, Ontario, Canada under REB protocol 23901. Of the n=31 recruited participants, 2 were excluded based on prior COVID-19 exposure and 2 left the study after the first sampling (moved out of country). For the 3 months post-dose 1, 11 out of the 27 eligible participants provided samples, whereas all other timepoints had n=27 subjects. Upon arrival at the sampling site, participants gave informed consent and serum and saliva samples were collected.

*Recruitment and participants – MSB-2. Supplementary Table 5:* Subjects who received 1 dose ChAdOx1-S and a second dose of either BNT162b2 or mRNA-1273 were independently recruited through a Twitter drive and sampled for blood and serum 2-4 weeks post-dose 2 at the University of Toronto in Toronto, Ontario, Canada under REB protocol 23901. 42 subjects were sampled in total; however one sample did not provide enough saliva for analysis resulting in a total of 41 samples analyzed from this cohort.

*Enzyme-linked immunosorbent assays for detecting antigen-specific IgG, IgA, and IgM in serum:* We used a previously published method for detection of saliva and serum anti-SARS-CoV-2 antibodies(1). Briefly, an automated chemiluminescent ELISA assay was used to analyze the levels of IgG, IgA, and IgM antibodies to the Spike trimer, and its RBD with the following modifications: RBD (PRO1151, 20 ng/well) antigens were produced in CHO (Chinese Hamster Ovary) cells, and were a kind gift from Dr. Yves Durocher, National Research Council of Canada (NRC). The secondary antibody for IgG was an IgG-HRP fusion (PRO1146, 1:6700 or 0.9 ng/well), donated by the NRC. A standard curve of the VHH72 monoclonal antibody(2) fused to a human IgG1 Fc domain (PRO23, also from the NRC) was generated for calibrating the anti-Spike and anti-RBD IgG response. All other antigens, detection reagents and calibration reagents were as previously described(1). The data analysis also proceeded as in(1), with the following exceptions: Blanks were not subtracted from the chemiluminescence raw values of the samples, and the raw values were normalized to a blank-subtracted point in the linear range of the calibration standard curve (for Spike and RBD, the reference point was 0.0156 µg/ml and for N, 0.0625 µg/ml). The results are represented as a “relative ratio” to this reference point. To define the cutoff for positive antibody calls for each antigen for IgG when 0.0625 µl/well of sample was added, 3 standard deviations from the mean of the log negative control distribution from >20 different runs collected over 4 months was used. For IgA, negatives from 2 different runs over one month and for IgM negatives from 3 runs over 2 months were used. In all cases, the selected cut offs correspond to <2% False Positive Rate (FPR) assessment, based on Receiver Operating Characteristic Curves.

*Saliva collection:* LTCH, MSB-1 and MSB-2 participants were told not to eat, drink or smoke at least 30 minutes prior to collection. Subsequently, saliva were collected using Salivette® tubes (Sarstedt, Numbrecht, Germany), a collection system which consists of a cotton ball which participants chew for exactly three minutes and place into a tube, which is then placed into a larger outer tube. The entire system is spun in a centrifuge at 1000 x g for five minutes at room temperature. The inner tube contains a hole at the bottom, which allows all the saliva absorbed by the cotton ball to filter into the larger outer tube. The total saliva volume from each participant was

then separated into 300-500µl aliquots and stored at -80°C until the time of testing. Given that these samples were collected from vaccinated participants who reported no symptoms of COVID-19 infection, we did not conduct any measures for viral inactivation.

*Antigen production- Saliva assay:* The expression, purification and biotinylation of the SARS-CoV-2 RBD and Spike ectodomain were performed as recently described(1). The human codon optimized cDNA of the SARS-CoV-2 Spike protein was purchased from Genscript (MC\_0101081). The soluble RBD (residues 328-528, RFPN...CGPK) was expressed as a fusion protein containing a C-terminal 6xHis tag followed by an AviTag. The soluble trimeric Spike protein ectodomain (residues 1-1211, MFVF...QYIK) was expressed with a C-terminal phage foldon trimerization motif followed by a 6xHis tag and an AviTag. To help stabilize the Spike trimer in its prefusion conformation, residues 682–685 (RRAR) were mutated to SSAS to remove the furin cleavage site and residues 986 and 987 (KV) were each mutated to a proline residue (51). Stably transfected FreeStyle 293-F cells secreting the RBD and soluble Spike trimer were generated using a previously reported piggyBac transposon-based mammalian cell expression system (52). Protein production was scaled up in 1L shake flasks containing 300 mL FreeStyle 293 medium. At a cell density of  $10^6$  cells/mL, 1 µg/mL doxycycline and 1 µg/mL Aprotinin were added. Every other day 150 mL of medium was removed and replaced by fresh medium. The collected medium was centrifuged at  $10000 \times g$  to remove the cells and debris and the His-tagged proteins were purified by Ni-NTA chromatography. The eluted protein was stored in PBS containing 300 mM imidazole, 0.1% (v/v) protease inhibitor cocktail (Sigma, P-8849) and 40% glycerol at -12°C. Shortly before use, the RBD and Spike proteins were further purified by size-exclusion chromatography on a Superdex 200 Increase (GE healthcare) or Superose 6 Increase (GE healthcare) column, respectively. Purity was confirmed by SDS-PAGE. For the Spike protein, negative stain electron microscopy was used show evidence of high-quality trimers. The Avi-tagged proteins, at a concentration of 100 µM or less, were biotinylated in reaction mixtures containing 200 µM biotin, 500 µM ATP, 500 µM MgCl<sub>2</sub>, 30 µg/mL BirA, 0.1% (v/v) protease inhibitor cocktail. The mixture was incubated at 30°C for 2 hours followed by size-exclusion chromatography to remove unreacted biotin.

*Enzyme-linked immunosorbent assays for detecting anti-Spike and anti-RBD IgA, IgG and IgM in saliva:* 96- well plates pre-coated with streptavidin were used for all saliva assays. We have previously determined that coating plates with 50ul per well of 2ug/ml of biotinylated RBD or 20ug/ml of biotinylated Spike diluted in sterile phosphate-buffered saline (PBS) was the ideal coating solution. Control wells were coated with 50ul per well of sterile PBS. After coating with the antigen of interest and incubating overnight at 4°C, the coating solution was discarded and plates were blocked with 5% BLOTTO solution (5% w/vol skim milk powder (BioShop, CAT# SKI400.500)). Plates were incubated with the blocking solution at 37°C for 2 hours, and the solution was discarded immediately prior to adding samples to each well. During the blocking incubation, frozen saliva samples were removed from -80°C storage, thawed and diluted using 2.5% BLOTTO at a range of 1:5-1:20. Sample dilutions were pre-incubated in a separate streptavidin-coated plate with no antigen to reduce anti-streptavidin activity in the saliva. Samples were incubated in the pre-adsorption plate for 30 minutes at 37°C, after which 50ul of each sample from the pre-adsorption plate was transferred to the corresponding wells of the antigen-coated plates and incubated for 2 hours at 37°C. Next, samples were discarded from the antigen-coated plates, and the plates were washed 3x with PBS+0.05% Tween 20 (PBS-T (BioShop, CAT# TWN510)). 50ul of Horse radish peroxidase (HRP)-conjugated goat anti human-IgG, IgA and IgM

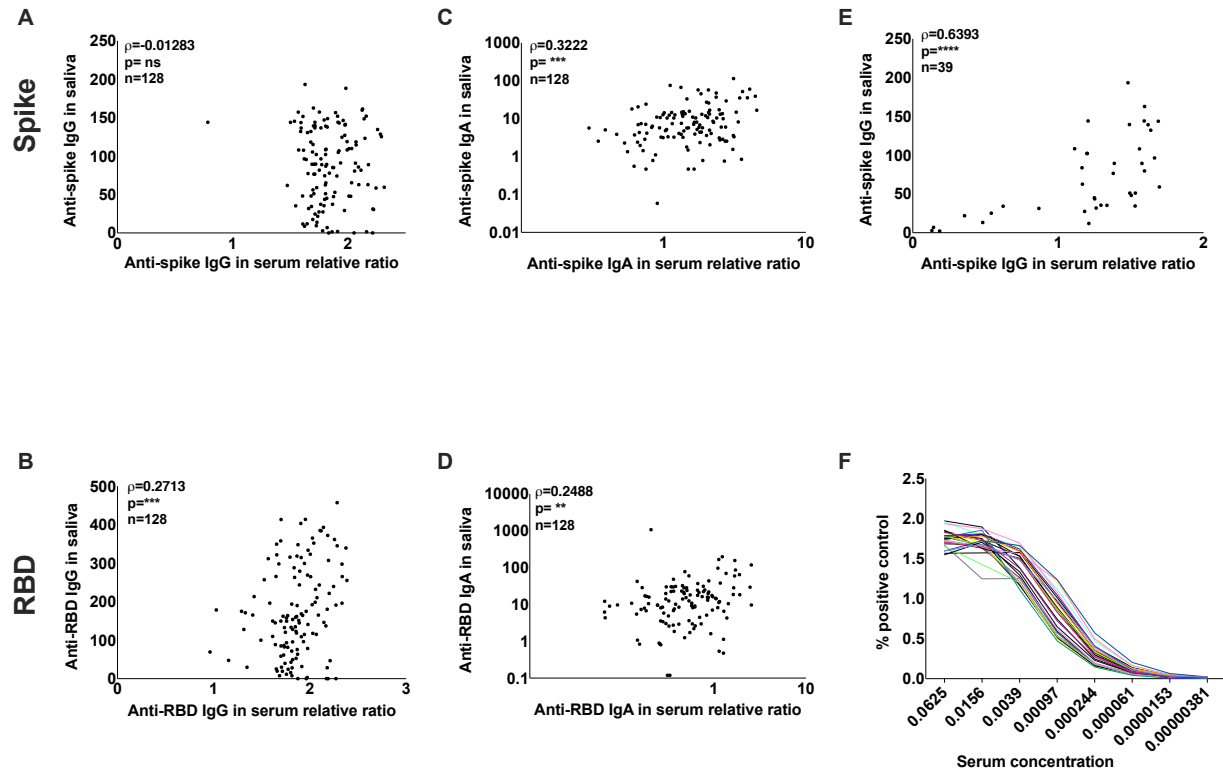
secondary antibodies (Southern Biotech, IgG: 2044-05, IgA: 2053-05, IgM: 2023-05) were added to the appropriate wells at dilutions of 1:1000, 1:2000 and 1:1000 in 2.5% BLOTTO, respectively, and incubated for 1 hour at 37°C. Plate development was done by adding 50uL of 3,3',5,5'-tetramethylbenzidine (TMB) Substrate Solution (ThermoFisher, 00-4021-56) to each well. The reaction was then stopped by adding 50μl/well of 1N H<sub>2</sub>SO<sub>4</sub>, and optical density (OD) was read at a wavelength of 450nm (OD<sub>450</sub>) on a spectrophotometer (Thermo Multiskan FC).

*ELISA for detection of secretory component associated anti-Spike/RBD antibodies:* Secretory chain associated antibodies were detected by modifying our saliva Spike/RBD ELISA by using an HRP-conjugated Goat anti-human secretory component detection reagent at a dilution of 1/750 from Nordic MUBio (Cat# GAHu/SC/PO).

*Flow Cytometry method for detection of nAb antibodies:* Neutralizing antibodies were measured at two step saliva dilutions (1:12-1:384) following incubation with recombinant Vesicular Stomatitis Virus (rVSV)-eGFP-SARS-CoV-2-Spike in which the VSV-G protein was replaced with SARS-CoV-2-Spike protein was propagated on MA104 cells(3). MA104 cells were maintained in Medium 199 (Gibco, Cat. No. 11150067) supplemented with 10% FBS and 1% Penicillin/Streptomycin (Fisher Scientific, Cat. No. 15-140-163). After visible cytopathic affect, supernatant was filtered, aliquoted and stored at -80 °C. Supernatant was added to Human Embryonic Kidney (HEK) 293 cells were engineered to encode human angiotensin converting enzyme 2 (hACE2 in the pDEST-mCherry vector) as previously described(4). HEK293-hACE2-mCherry cells were cultured in Gibco Dulbecco's Modified Eagle Medium (DMEM) formulation containing glucose, L-glutamine and sodium pyruvate (Gibco, Cat. No. 11995065) with 1x Penicillin/Streptomycin. Geneticin Selective Antibiotic (G418) (Gibco, Cat. No. 10131035) was added at a concentration of 500 u μ/mL to maintain hACE2-mCherry expression. Cells were grown in 5% carbon dioxide (CO<sub>2</sub>) at 37 °C and passaged every 3 days using Versene solution (Gibco, Cat. No. 15040066). HEK293-hACE2-mCherry cells were seeded at a density of 25,000 cells per well in a 96-well, flat-bottom tissue culture coated plate. Outer rows were avoided to reduce assay variations resulting from edge effect in the IncuCyte. In a separate 96 well plate, samples were serially diluted and incubated with 50 μl of rVSV-eGFP-SARS-CoV-2-S for 2 hours at 37 °C in 5% CO<sub>2</sub>. Each sample plate included a dilution of anti-RBD antibody (Invitrogen, Cat. No. 703958) of 10 μg/mL, 5 μg/mL, 1 μg/mL, 0.5 μg/mL, 0.1 μg/mL, and 0.05 μg/mL as a positive control. After incubation, the mixture of sample and rVSV-eGFP-SARS-CoV-2-S was transferred to the plated HEK293-hACE2-mCherry cells at a 1:1 ratio of culture media to virus/sample suspension. Plates loaded in the IncuCyte were imaged every 1-4 hours for a total of 72 hours with 4 scans per sample well to visualize neutralization. The total integrated intensity of the fluorescent value of the lowest anti-RBD condition (0.05 μg/mL) with the rVSV-eGFP-SARS-CoV-2-S controls at 12-hour intervals was used to normalize separate experiment runs. Each plate was normalized either to the mean of the rVSV-eGFP-SARS-CoV-2-S supernatant controls or to the 0.05 μg/mL anti-RBD antibody. Normalization to 0.05 μg/mL anti-RBD was performed only if division by the triplicate rVSV-eGFP-SARS-CoV-2 control conditions resulted in loss of a sigmoidal shape of the anti-RBD curve. To quantitatively determine assay sensitivity, fluorescent reduction of neutralization titers (FRNT) 50 and 70 were calculated to determine the amount of monoclonal anti-RBD needed to prevent 50% and 30%, respectively, of the maximum infection (Sup. Fig. 10B and C) and plotted in log<sub>10</sub> scale for plasma and log<sub>2</sub> scale for saliva due to variations in antibody titers in different tissue types. This assay is sufficiently sensitive down to 5 μg/mL of neutralizing antibodies.

*Sample Analysis:* For each sample, the raw OD<sub>450</sub> for the PBS control well was subtracted from the raw antigen-specific OD<sub>450</sub> value for each sample, at each sample dilution (1:5, 1:10, 1:20). The adjusted OD<sub>450</sub> value for each sample dilution (1:5, 1:10, 1:20) was used to calculate the area under the curve (AUC) for each individual sample. The sample AUC was then normalized to the AUC of the positive control, which consisted of saliva collected from COVID-19 acute and convalescent participants. The normalized AUC was multiplied by 100 to give a final percentage, which we deemed the “% of positive control”. Each plate also included 1-3 negative controls, which consisted of pre-COVID era saliva incubated in antigen-coated wells. Integrated scores were calculated for all negative control samples, using the same calculation method used for cohort 1 and 2 samples. “Positive” cut off values for each antigen-specific isotype were calculated using the following formula: average integrated scores of negative samples + 2(standard deviation of negative control integrated scores). Samples whose score was above the resulting cut off for each antigen-specific isotype was used to determine which samples from cohorts 1 and 2 had detectable antibody levels in their saliva.

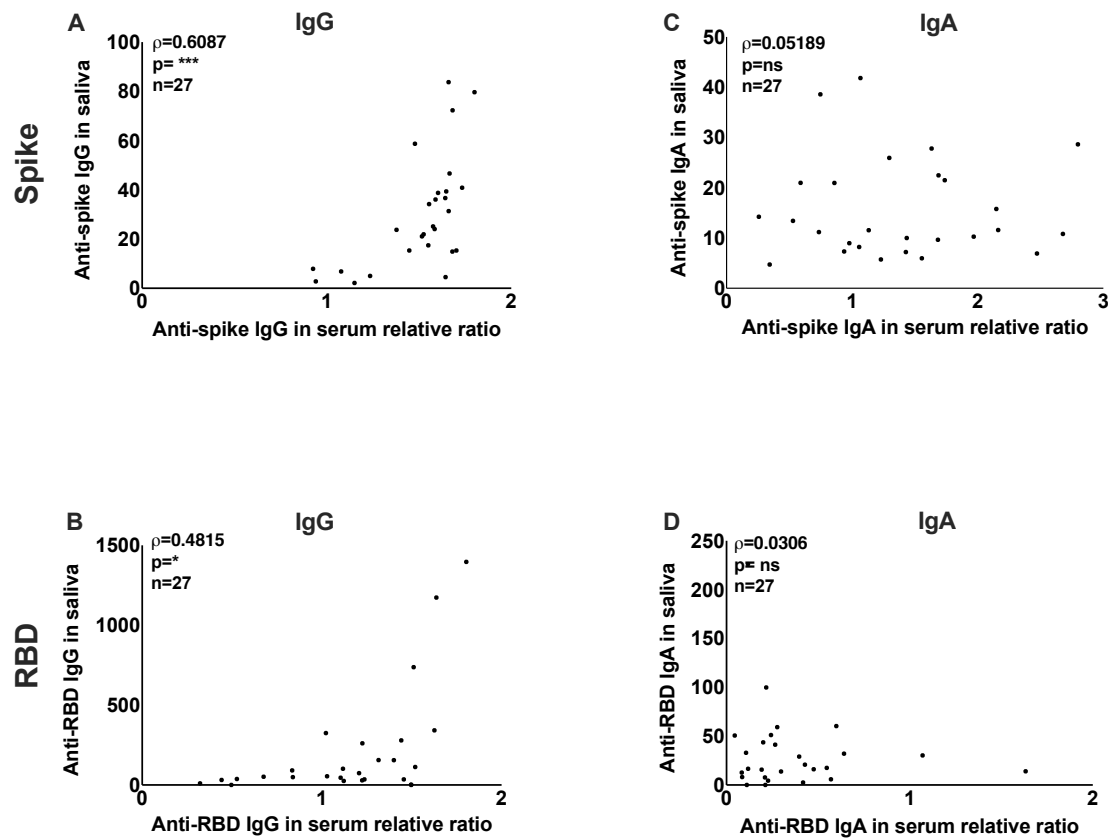
*Multivariable analysis:* The relationships between clinical predictors (age, sex, SARS-CoV-2 infection prior to vaccination, and time from vaccination to sample collection) and antibody levels were examined in bivariate and *a priori* multivariable linear regression models. For saliva, four multivariable linear regression models were constructed to examine potential independent associations between the four clinical predictors and anti-RBD IgA/IgG and anti-Spike IgA/IgG. For serum, two multivariable linear regression models were constructed to examine potential independent associations between the four clinical predictors and anti-RBD IgA/IgG. In each model, antibody levels were appropriately transformed to ensure homoscedasticity, and the absence of multicollinearity was confirmed with variance inflation factors being <5 for all predictors. All analysis was performed in SAS 9.4M6 (SAS Institute, Cary, NC). P values of <0.05 were considered statistically significant.



**Fig. S1.**

### **Correlation of anti-spike and anti-RBD antibodies in the saliva and serum after two-doses of mRNA vaccine**

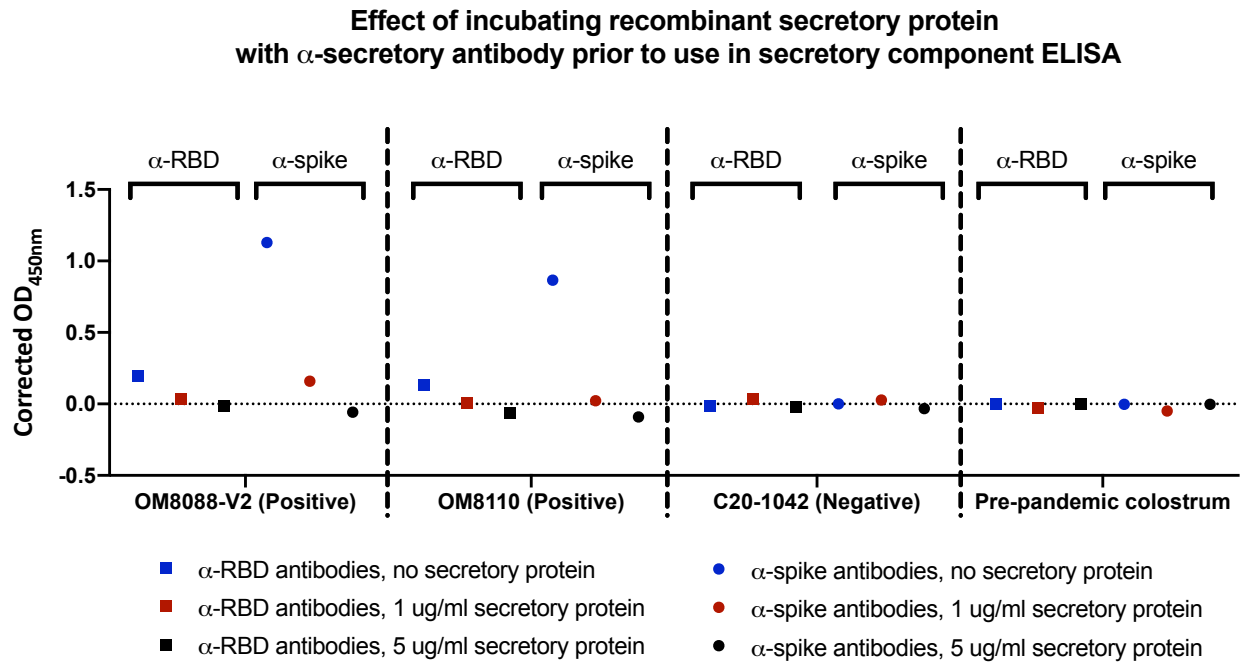
(A-D) N=128 Subjects were sampled 2-4 weeks after their second dose of either BNT162b2 or mRNA-1273. The indicated antibody isotypes (IgA and IgG) were analyzed in serum and saliva via an ELISA-based method. A Spearman test was used to calculate the correlation coefficient for each plot. We observed significant positive correlations for anti-RBD IgG (B), anti-Spike IgA (C) and anti-RBD IgA (D) in saliva and serum. We did not observe a significant correlation for anti-Spike IgG antibodies (A); however, this was due to oversaturation of signal in the serum. We therefore repeated the analysis for anti-Spike IgG using a lower concentration on a subset ( $n=39$ ) of samples (E) using the 3<sup>rd</sup> point on the titration curve (F) and observed a significant positive correlation between serum and saliva titers. ns= not significant,  $**=p<0.01$ ,  $***=p<0.001$  and  $****=p<0.0001$ .



**Fig. S2.**

**Correlation of anti-spike and anti-RBD antibodies in the saliva and serum after a single dose of mRNA vaccine in the MSB-1 cohort.**

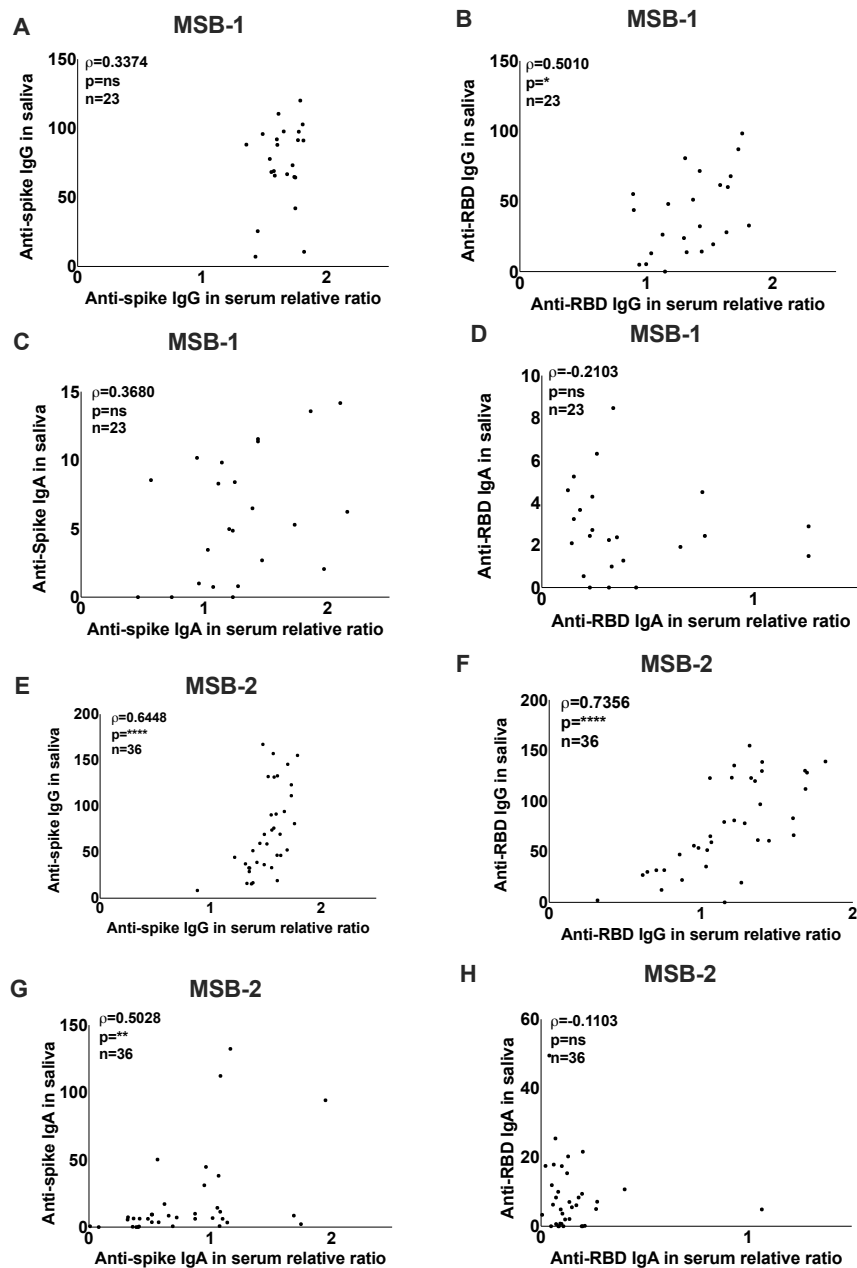
(A-D) N=27 MSB-1 participants were sampled 2-4 weeks after 1 dose with BNT162b2. The indicated antibody isotypes (IgA and IgG) were analyzed in serum and saliva via an ELISA-based method. Spearman test was used to calculate the correlation coefficient for each plot. ns= not significant,  $*$ = $p<0.05$  and  $***$ = $p<0.001$ .



**Fig. S3.**

**Detection of secretory component associated with Spike/RBD-specific antibodies from COVID-19 patient saliva**

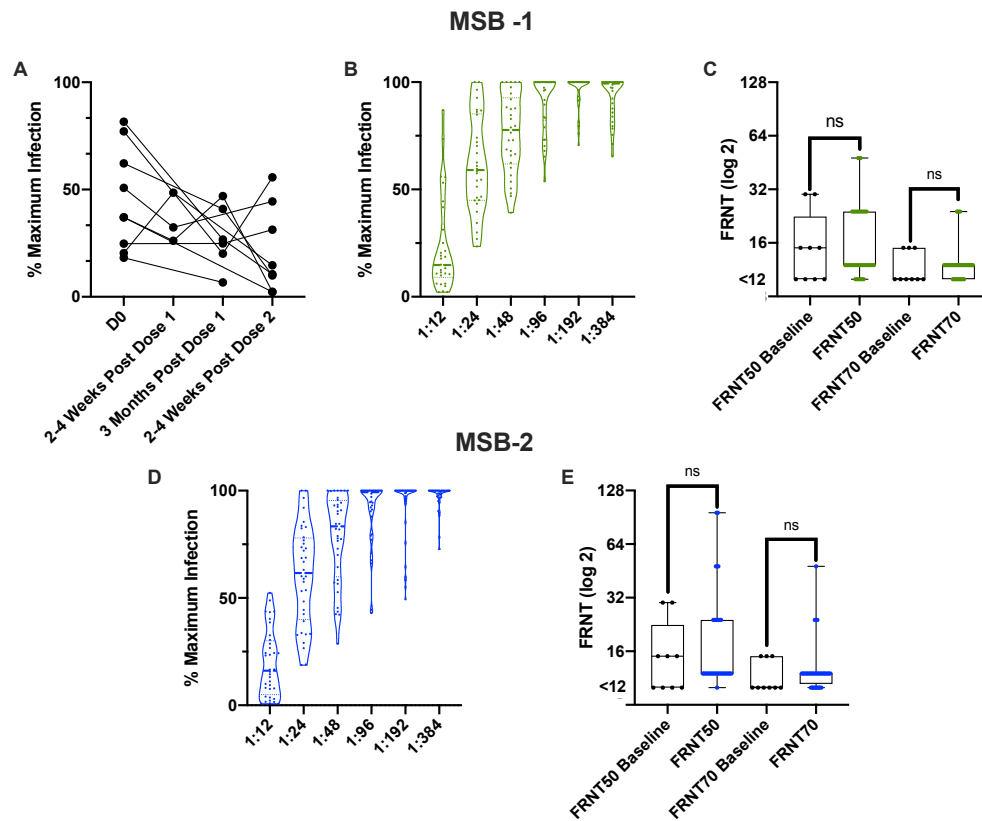
Validation of secretory component assay was confirmed by outcompeting signal with recombinant secretory component. We observed that incubation of COVID-19 positive samples with recombinant secretory component prior to incubation in the experimental plate brought signal down to negative control levels in a concentration-dependent manner. Pre-pandemic colostrum showed no evidence of anti-Spike/RBD associated secretory component signal, as expected. Mann-Whitney U test was used to calculate significance between groups, where \*\*\*\*= $p < 0.0001$ .



**Fig. S4.**

### **Correlation of anti-spike and anti-RBD antibodies in the saliva and serum after 2 vaccine doses**

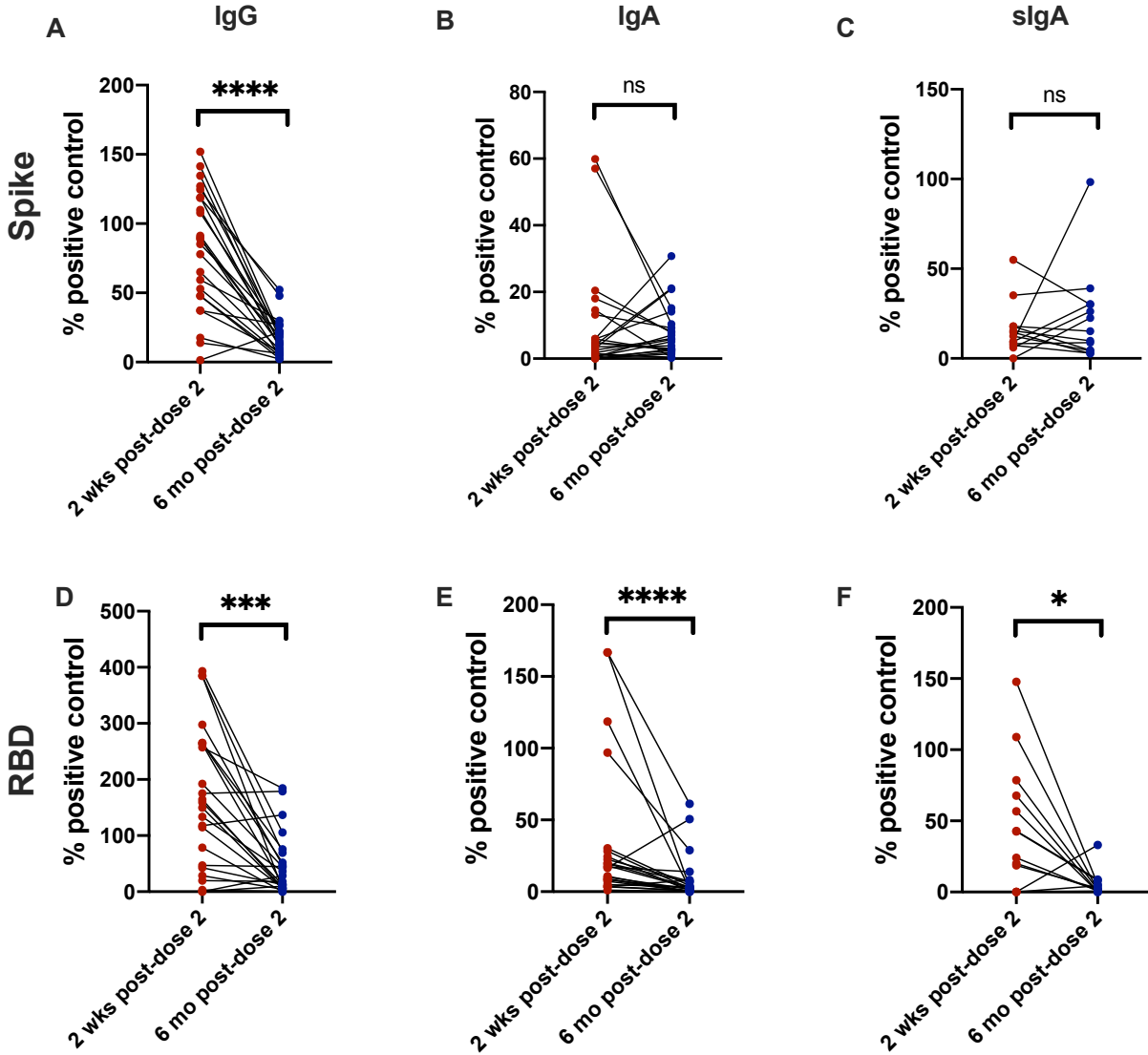
Participants from either MSB-1 (A-D) or MSB-2 cohorts (E-H) were sampled 2-4 weeks after 2 doses of BNT162b2 (MSB-1) or 1 dose of ChAdOx1-S and a second dose of either BNT162b2 or mRNA1273 (MSB-2). IgA and IgG were analyzed in serum and saliva, and a Spearman test was used to calculate correlation coefficients. ns= not significant,  $*$ = $p<0.05$  and  $***$ = $p<0.001$ .



**Fig. S5.**

### Neutralizing antibodies detected in the saliva of vaccinated subjects

Saliva from MSB-1 (A-C) or MSB-2 (D-E) was assessed for the presence of neutralizing antibodies and results were expressed as a percentage of maximum infection, where a lower percentage indicates decreased infection of hACE-2 HEK293 cells by rVSV-eGFP-SARS-CoV-2-Spike. (A) Longitudinal assessment of a subset of MSB-1 subjects (n=9). (B) Neutralization potential at different dilutions of saliva from n=30 MSB-1 participants. (C) Fluorescent reduction neutralization titre (FRNT) using a cut off of either 50% or 70% neutralization (FRNT50 and FRNT70, respectively) from n=30 MSB-1 participants. (D) Neutralization potential at different dilutions of saliva from n=36 MSB-2 participants. (E) FRNT using a cut off of either 50% or 70% neutralization (FRNT50 and FRNT70, respectively) from n=36 MSB-2 participants. Mann-Whitney U test was used to calculate significance between groups, where ns=not significant. Note – some symbols in C and E are overlapping. ns= not significant.



**Fig. S6.**

#### **Decay of salivary antibody levels at 6 months post-dose 2 in the LTCH cohort**

Saliva from LTCH participants was assessed for the presence of IgG (A, D), IgA (B, E) and sIgA (C, F) antibodies against Spike (A-C) or RBD (D-F). Mann-Whitney U test was used to calculate significance between groups. ns= not significant,  $*$ = $p<0.05$ ,  $***$ = $p<0.001$ , and  $****$ = $p<0.0001$ .

**Table S1.**  
LTCH cohort (mRNA/mRNA)

Participant ID	Age	Sex	Vaccine type	Interval between dose 1 and dose 2 (weeks)
1	46-50	F	mRNA1273	4
2	61-65	F	mRNA1273	4.7
3	46-50	F	BNT162b2	5.9
4	41-45	F	mRNA1273	4
5	56-60	F	BNT162b2	3
6	41-45	F	mRNA1273	4
7	56-60	F	mRNA1273	4
8	41-45	F	BNT162b2	5
9	56-60	F	mRNA1273	4
10	46-50	F	mRNA1273	4
11	36-40	F	BNT162b2	5
12	51-55	M	BNT162b2	2.9
13	56-60	F	mRNA1273	2.9
14	46-50	F	BNT162b2	5.6
15	31-35	F	BNT162b2	5.3
16	51-55	F	BNT162b2	5.6
17	61-65	F	BNT162b2	47.7
18	51-55	F	BNT162b2	4.4
19	51-55	F	mRNA1273	4
20	61-65	F	BNT162b2	5
21	56-60	F	BNT162b2	5
22	26-30	F	BNT162b2	5.6
23	56-60	F	BNT162b2	5.6
24	46-50	F	BNT162b2	5.6
25	41-45	F	BNT162b2	5.6
26	36-40	F	BNT162b2	5.6
27	61-65	F	BNT162b2	5.6
28	51-55	F	BNT162b2	5.6
29	41-45	F	BNT162b2	5.6
30	51-55	M	BNT162b2	7
31	61-65	F	BNT162b2	5.6
32	46-50	F	BNT162b2	5
33	26-30	F	BNT162b2	5.6
34	31-35	M	BNT162b2	5.6
35	36-40	F	mRNA1273	4

36	31-35	F	BNT162b2	5
37	41-45	F	BNT162b2	5.6
38	26-30	F	BNT162b2	5.6
39	41-45	F	BNT162b2	5
40	61-65	F	BNT162b2	6.4
41	36-40	M	BNT162b2	5.6
42	31-35	F	mRNA1273	4
43	36-40	M	mRNA1273	4
44	51-55	F	mRNA1273	3
45	46-50	M	mRNA1273	4
46	26-3-	F	mRNA1273	4
47	56-60	F	mRNA1273	4
48	31-35	F	mRNA1273	5
49	56-60	M	mRNA1273	4.9
50	51-55	F	mRNA1273	5
51	41-45	F	mRNA1273	4.1
52	51-55	F	mRNA1273	2.9
53	36-40	F	BNT162b2	4.6
54	41-45	F	BNT162b2	4.1
55	61-65	F	BNT162b2	3.4
56	61-65	F	BNT162b2	4.6
57	20-25		BNT162b2	3.7
58	20-25	F	BNT162b2	4.9
59	31-35	F	BNT162b2	3
60	26-30	F	BNT162b2	4.4
61	31-35	F	BNT162b2	3.7
62	46-50	F	BNT162b2	4.9
63	36-40	M	BNT162b2	3
64	61-65	M	BNT162b2	4.6
65	46-50	F	BNT162b2	3.1
66	61-65	F	BNT162b2	5
67	26-30	F	BNT162b2	4.7
68	51-55	F	BNT162b2	4.4
69	46-50	F	BNT162b2	3
70	41-45	F	BNT162b2	3.9
71	51-55	F	BNT162b2	3.9
72	31-35	F	BNT162b2	8.4
73	46-50	F	BNT162b2	6.9
74	51-55	F	BNT162b2	3
75	20-25	F	BNT162b2	3.1
76	20-25		BNT162b2	3.7

77	51-55	F	BNT162b2	3
78	56-60	F	BNT162b2	4.7
79	20-25	F	BNT162b2	3.1
80	55-60	F	BNT162b2	5.1
81	36-40	M	BNT162b2	5
82	26-30	F	BNT162b2	5
83	56-60	F	BNT162b2	4
84	20-25	F	mRNA1273	4
85	20-25	F	BNT162b2	5
86	46-50	M	mRNA1273	3.4
87	41-45	F	BNT162b2	5
88	66-70	F	BNT162b2	5
89	36-40	M	mRNA1273	3
90	31-35	F	BNT162b2	3
91	31-35	F	mRNA1273	3.4
92	20-25	F	BNT162b2	3
93	26-30	F	mRNA1273	3
94	20-25	F	BNT162b2	3
95	41-45	F	BNT162b2	3
96	61-65	F	mRNA1273	3
97	56-60	F	mRNA1273	4
98	41-45	F	BNT162b2	49.1
99	26-30	F	BNT162b2	49.1
100	56-60	F	mRNA1273	3
101	26-30	F	mRNA1273	4
102	36-40	F	BNT162b2	3
103	61-65	F	mRNA1273	3.6
104	36-40	F	BNT162b2	5
105	26-30	F	mRNA1273	3.4
106	20-25	F	mRNA1273	4
107	71-75	F	mRNA1273	
<b>Summary</b>	<b>Median=46</b>	<b>%M=11</b> <b>%F=89</b>	<b>%mRNA1273=32</b> <b>%BNT162b2=68</b>	<b>Median=4.4</b>

**Table S2.**  
COVID-19 era negative controls

<b>Participant ID</b>	<b>Age</b>	<b>Sex</b>	<b>Collection period</b>	<b>Used in Fig 1, Fig. 3 or as pooled negative</b>
108	26-30	M	COVID era	Fig. 3
109	20-25	F	COVID era	Fig. 3
110	61-65	M	COVID era	Fig. 3
111	36-40	M	COVID era	Fig. 3
112	56-6-	F	COVID era	Fig. 3
113	41-45	M	COVID era	Fig. 3
114	46-50	F	COVID era	Fig. 3
115	26-30	M	COVID era	Fig. 3
116	31-35	F	COVID era	Fig. 3
117	31-35	M	COVID era	Fig. 3
118	36-40	F	COVID era	Fig. 3
119	36-40	M	COVID era	Fig. 3
120	31-35	M	COVID era	Fig. 3
121	36-40	M	COVID era	Fig. 3
122	66-70	F	COVID era	Fig. 3
123	66-70	M	COVID era	Fig. 3
124	91-95	F	COVID era	Fig. 3
125	36-40	M	COVID era	Fig. 3
126	71-75	F	COVID era	Fig. 3
127	66-70	M	COVID era	Fig. 3
128	36-40	F	COVID era	Fig. 3
129	41-45	M	COVID era	Fig. 3
130	41-45	M	COVID era	Fig. 3
131	51-55	M	COVID era	Fig. 3
132	61-65	M	COVID era	Fig. 3
133	56-60	F	COVID era	Fig. 3
134	61-65	M	COVID era	Fig. 3
135	71-75	M	COVID era	Fig. 3
136	81-85	F	COVID era	Fig. 3
137	51-55	M	COVID era	Fig. 3
138	71-75	M	COVID era	Fig. 3
139	61-65	F	COVID era	Fig. 3
140	61-65	M	COVID era	Fig. 3
141	81-85	F	COVID era	Fig. 3
142	46-50	M	COVID era	Fig. 3
143	66-70	F	COVID era	Fig. 3
144	20-25	F	COVID era	Fig. 3

145	66-70	F	COVID era	Fig. 3
146	26-30	M	COVID era	Fig. 3
147	61-65	F	COVID era	Fig. 3
148	61-65	M	COVID era	Fig. 3
149	41-45	M	COVID era	Fig. 3
150	61-65	M	COVID era	Fig. 3
151	86-90	M	COVID era	Fig. 3
152	81-85	F	COVID era	Fig. 3
153	81-85	M	COVID era	Fig. 3
154	76-80	M	COVID era	Fig. 3
155	56-60	M	COVID era	Fig. 3
156	56-60	M	COVID era	Fig. 3
<b>Summary</b>	<b>Median age=58</b>	<b>%M=63 %F=37</b>		

**Table S2b.**

Pre-COVID era negative controls

<b>Sample ID</b>	<b>Age</b>	<b>Sex</b>	<b>Used in Fig. 1, Fig. 3 or as pooled negative</b>
157	31-35	F	Pooled negative
158	41-45	F	Pooled negative
159	41-45	M	Pooled negative
160	31-35	F	Pooled negative
161	66-70	M	Pooled negative
162	20-25	F	Pooled negative
163	31-35	F	Pooled negative
164	26-30	F	Pooled negative
165	41-45	F	Pooled negative
166	31-35	M	Pooled negative
167	26-30	M	Pooled negative
168	41-45	F	Pooled negative
169	46-50	F	Pooled negative
170	36-40	F	Pooled negative
171	56-60	M	Pooled negative
172	36-40	M	Pooled negative
173	51-55	F	Pooled negative
174	15-19	M	Pooled negative
175	20-25	M	Pooled negative
176	46-50	M	Pooled negative
177	36-40	F	Pooled negative
178	36-40	F	Pooled negative
179	46-50	F	Pooled negative
180	41-45	F	Pooled negative
181	46-50	M	Pooled negative
182	51-55	F	Pooled negative
183	31-35	M	Pooled negative
184	31-35	F	Pooled negative
185	56-60	F	Pooled negative
186	51-55	F	Pooled negative
187	26-30	F	Pooled negative
188	36-40	M	Pooled negative
189	41-45	M	Pooled negative
190	31-35	F	Pooled negative
191	26-30	F	Pooled negative
192	36-40	F	Pooled negative
193	56-60	M	Pooled negative
194	41-45	M	Pooled negative

195	41-45	F	Pooled negative
196	36-40	F	Pooled negative
197	31-35	M	Pooled negative
198	36-40	M	Pooled negative
199	46-50	F	Pooled negative
200	41-45	F	Pooled negative
201	15-19	F	Pooled negative
202	26-30	F	Pooled negative
203	21-25	M	Pooled negative
204	36-40	F	Pooled negative
205	36-40	M	Pooled negative
206	31-35	F	Pooled negative
207	26-30	F	Pooled negative
208	31-35	M	Fig. 3 + pooled negative
209	32-35	M	Fig. 3 + pooled negative
210	41-45	M	Fig. 3 + pooled negative
211	51-55	F	Fig. 3 + pooled negative
212	56-60	M	Fig. 3 + pooled negative
213	56-60	F	Fig. 3 + pooled negative
214	46-50	F	Fig. 3 + pooled negative
215	41-45	M	Fig. 3 + pooled negative
216	41-45	M	Fig. 3 + pooled negative
217	36-40	F	Fig. 3 + pooled negative
218	46-50	M	Fig. 3 + pooled negative
219	41-45	F	Fig. 3 + pooled negative
220	51-55	M	Fig. 3 + pooled negative
221	41-45	F	Fig. 3 + pooled negative
222	26-30	M	Fig. 3 + pooled negative
223	41-45	F	Fig. 3 + pooled negative
224	26-30	M	Fig. 3 + pooled negative
225	31-35	M	Fig. 3 + pooled negative
226	36-40	M	Fig. 3 + pooled negative
227	41-45	F	Fig. 3 + pooled negative
228	36-40	F	Fig. 3 + pooled negative
229	15-19	M	Fig. 3 + pooled negative
230	20-25	F	Fig. 3 + pooled negative
231	46-50	F	Fig. 3 + pooled negative
232	56-60	F	Fig. 3 + pooled negative
233	61-65	M	Fig. 3 + pooled negative
234	36-40	F	Fig. 3 + pooled negative
<b>Summary</b>	<b>Median age=39</b>	<b>%M=42 %F=58</b>	

**Table S2c.**

COVID-19 patient data

<b>Participant ID</b>	<b>Age</b>	<b>Sex</b>	<b>Days PSO</b>	<b>Status</b>	<b>Used in Fig.1 or Fig. 3</b>
235	71-75	M	46	Convalescent	Fig. 3
236	31-35	M	78	Convalescent	Fig. 3
237	56-60	M	47	Convalescent	Fig. 3
238	71-75	F	42	Convalescent	Fig. 3
239	26-30	M	50	Convalescent	Fig. 3
240	51-55	M	48	Convalescent	Fig. 3
241	46-50	M	60	Convalescent	Fig. 3
242	41-45	M	44	Convalescent	Fig. 3
243	56-60	F	45	Convalescent	Fig. 3
244	56-60	F	39	Convalescent	Fig. 3
245	51-55	M	65	Convalescent	Fig. 3
246	41-45	F	53	Convalescent	Fig. 3
247	61-65	F	51	Convalescent	Fig. 3
248	56-60	F	47	Convalescent	Fig. 3
249	26-30	M	42	Convalescent	Fig. 3
250	41-45	M	49	Convalescent	Fig. 3
251	56-60	M	39	Convalescent	Fig. 3
252	56-60	F	59	Convalescent	Fig. 3
253	76-80	M	64	Convalescent	Fig. 3
254	51-55	M	58	Convalescent	Fig. 3
255	71-75	M	57	Convalescent	Fig. 3
256	56-60	F	58	Convalescent	Fig. 3
257	61-65	M	40	Convalescent	Fig. 3
258	51-55	M	64	Convalescent	Fig. 3
259	26-30	F	91	Convalescent	Fig. 3
260	51-55	M	49	Convalescent	Fig. 3
261	66-70	F	65	Convalescent	Fig. 3
262	51-55	F	52	Convalescent	Fig. 3
263	51-55	M	82	Convalescent	Both
264	51-55	M	75	Convalescent	Fig. 3
265	26-30	F	56	Convalescent	Fig. 3
266	61-65	M	31	Convalescent	Fig. 3
267	76-80	F	47	Convalescent	Fig. 3
268	66-70	F	40	Convalescent	Fig. 3
269	46-50	M	50	Convalescent	Fig. 3
270	81-85	F	67	Convalescent	Fig. 3
271	61-65	M	62	Convalescent	Fig. 3
272	71-75	M	80	Convalescent	Fig. 3

273	56-60	M	104	Convalescent	Fig. 3
274	71-75	M	40	Convalescent	Fig. 3
275	81-85	M	17	Acute	Fig. 3
276	41-45	M	44	Convalescent	Fig. 3
277	81-85	M	13	Acute	Fig. 3
278	36-40	F	51	Convalescent	Fig. 3
279	61-70	F	53	Convalescent	Fig. 3
280	36-40	M	45	Convalescent	Both
281	51-55	M	52	Convalescent	Both
282	46-50	M	9	Acute	Both
283	61-65	M	10	Acute	Both
284	56-60	M	69	Convalescent	Both
285	41-45	M	24	Convalescent	Both
286	81-85	F	11	Acute	Both
287	81-85	F	14	Acute	Both
288	81-85	M	5	Acute	Both
289	86-49	M	12	Acute	Fig. 3
290	91-95	F	10	Acute	Fig. 3
291	76-80	M	7	Acute	Fig. 3
292	76-80	M	10	Acute	Fig. 3
293	46-50	M	13	Acute	Fig. 3
294	56-60	M	8	Acute	Fig. 3
295	56-60	M	11	Acute	Fig. 3
296	56-60	F	11	Acute	Fig. 3
297	96-100	F	3	Acute	Fig. 3
298	96-100	F	6	Acute	Fig. 3
299	61-65	M	15	Acute	Fig. 3
300	36-40	M	19	Acute	Fig. 3
301	61-65	F	3	Acute	Fig. 3
302	81-85	F	12	Acute	Fig. 3
303	61-65	F	9	Acute	Fig. 3
304	66-70	M	36	Convalescent	Fig. 3
305	31-35	F	40	Convalescent	Fig. 3
306	31-25	F	75	Convalescent	Both
307	41-35	M	86	Convalescent	Both
308	71-75	F	96	Convalescent	Both
309				Acute	Fig 1
400				Acute	Fig 1
401				Acute	Fig 1
402				Acute	Fig 1
<b>Summary</b>	<b>Median =59</b>	<b>%M=61 %F=39</b>	<b>Mean. = 42d</b>	<b>%Acute=32 %Convalescent=68</b>	

**Table S3a.**

Bivariate and multivariable analysis examining potential independent associations between log-transformed saliva anti-Spike IgA.

	<b>Bivariate analysis</b>	<b>Multivariable analysis</b>
<b>Predictor</b>	Beta coefficient (95% CI)	Beta coefficient (95% CI)
Age in years	0.02 (0.01 to 0.04)	0.02 (0.002 to 0.04)
Male sex	-0.4 (-1.1 to 0.3)	-0.4 (-1.1 to 0.3)
Time from vaccination to sample collection in days	0.01 (-0.03 to 0.05)	0.01 (-0.03 to 0.05)
Prior SARS-CoV-2 infection	1.0 (0.4 to 1.5)	0.9 (0.3 to 1.4)

Abbreviations: CI = confidence interval

**Table S3b.**

Bivariate and multivariable analysis examining potential independent associations between saliva anti-Spike IgG.

	<b>Bivariate analysis</b>	<b>Multivariable analysis</b>
<b>Predictor</b>	Beta coefficient (95% CI)	Beta coefficient (95% CI)
Age in years	0.6 (-0.1 to 1.2)	0.4 (-0.2 to 1.1)
Male sex	-38.7 (-65.2 to -12.2)	-39.5 (-65.7 to -13.3)
Time from vaccination to sample collection	-0.9 (-4.7 to 2.8)	-0.4 (-1.9 to 1.1)
Prior SARS-CoV-2 infection	21.3 (-0.3 to 42)	19.7 (-1.5 to 41)

Abbreviations: CI = confidence interval

**Table S3c.**

Bivariate and multivariable analysis examining potential independent associations between log-transformed serum anti-RBD IgA.

	<b>Bivariate analysis</b>	<b>Multivariable analysis</b>
<b>Predictor</b>	Beta coefficient (95% CI)	Beta coefficient (95% CI)
Age in years	0.005 (-0.006 to 0.02)	0.0008 (-0.01 to 0.01)
Male sex	0.2 (-0.2 to 0.7)	0.2 (-0.3 to 0.6)
Time from vaccination to sample collection	-0.04 (-0.06 to -0.01)	-0.04 (-0.06 to -0.01)
Prior SARS-CoV-2 infection	0.5 (0.1 to 0.9)	0.5 (0.2 to 0.9)

Abbreviations: CI = confidence interval

**Table S4.**

MSB-1 (longitudinal mRNA 2 doses cohort)

<b>Participant ID</b>	<b>Age</b>	<b>Sex</b>	<b>Vaccination Type</b>
403	20-25	F	BNT162b2
404	26-30	F	BNT162b2
405	26-30	M	BNT162b2
406	20-25	F	BNT162b2
407	20-25	M	BNT162b2
408	20-25	M	BNT162b2
409	20-25	M	BNT162b2
410	41-45	F	BNT162b2
411	20-25	M	BNT162b2
412	20-25	F	BNT162b2
413	31-35	F	BNT162b2
414	36-40	F	BNT162b2
415	56-50	M	BNT162b2
416	56-60	M	BNT162b2
417	20-25	F	BNT162b2
418	36-40	M	BNT162b2
419	20-25	F	BNT162b2
420	20-25	F	BNT162b2
421	31-35	M	BNT162b2
422	26-30	M	BNT162b2
423	26-30	F	BNT162b2
424	26-30	F	BNT162b2
425	26-30	F	BNT162b2
426	20-25	F	BNT162b2
427	26-30	M	BNT162b2
428	46-50	M	BNT162b2
429	41-45	F	BNT162b2
430	41-45	F	BNT162b2
431	26-30	F	BNT162b2
432	26-30	M	BNT162b2
<b>Summary</b>	<b>Median age=27</b>	<b>%M=42 %F=56</b>	

**Table S5**  
MSB-2 cohort (ChAdOx1-S dose1, mRNA dose 2)

Participant ID	Age	Sex	Second vaccination type
433	56-60	F	BNT162b2
434	51-55	F	mRNA1273
435	36-40	F	mRNA1273
436	51-55	F	BNT162b2
437	46-50	F	BNT162b2
438	56-60	F	mRNA1273
439	56-60	F	mRNA1273
440	41-45	F	BNT162b2
441	46-50	F	BNT162b2
442	41-50	F	BNT162b2
443	71-75	M	BNT162b2
444	46-50	M	mRNA1273
445	46-50	M	BNT162b2
446	56-60	M	BNT162b2
447	41-45	F	BNT162b2
448	46-50	M	BNT162b2
449	41-45	M	BNT162b2
450	41-45	Other	BNT162b2
451	41-45	F	BNT162b2
452	56-60	F	BNT162b2
453	71-75	F	BNT162b2
454	61-65	M	BNT162b2
455	56-60	F	BNT162b2
456	61-65	F	BNT162b2
457	36-40	M	mRNA1273
458	51-55	M	mRNA1273
459	36-40	M	mRNA1273
460	56-60	F	BNT162b2
461	41-45	F	mRNA1273
462	66-70	F	mRNA1273
463	51-55	F	mRNA1273
464	61-65	M	BNT162b2
465	61-65	F	BNT162b2
466	61-65	M	BNT162b2
467	56-60	M	BNT162b2
468	46-50	F	mRNA1273
469	46-50	M	BNT162b2

470	41-45	F	BNT162b2
471	41-45	F	BNT162b2
472	56-60	F	BNT162b2
473	66-70	M	mRNA1273
<b>Summary</b>	<b>Median Age=</b> <b>52.5</b>	<b>%M=61</b> <b>%F= 39</b>	<b>%BNT162b2=68</b> <b>%mRNA1273=32</b>

## Supplementary References

1. B. Isho *et al.*, Persistence of serum and saliva antibody responses to SARS-CoV-2 spike antigens in COVID-19 patients. *Sci Immunol* **5**, (2020).
2. D. Wrapp *et al.*, Cryo-EM structure of the 2019-nCoV spike in the prefusion conformation. *Science* **367**, 1260-1263 (2020).
3. J. B. Case *et al.*, Neutralizing Antibody and Soluble ACE2 Inhibition of a Replication-Competent VSV-SARS-CoV-2 and a Clinical Isolate of SARS-CoV-2. *Cell Host Microbe* **28**, 475-485 e475 (2020).
4. R. Zang *et al.*, Cholesterol 25-hydroxylase suppresses SARS-CoV-2 replication by blocking membrane fusion. *Proc Natl Acad Sci U S A* **117**, 32105-32113 (2020).