

Supplementary Materials for

Harmony COVID-19: a ready-to-use kit, low-cost detector, and smartphone app for point-of-care SARS-CoV-2 RNA detection

Nuttada Panpradist, Enos Kline, Robert G Atkinson, Michael Roller, Qin Wang, Ian T Hull, Jack H. Kotnik, Amy K Oreskovic, Crissa Bennett, Daniel Leon, Victoria Lyon, Shane Gilligan-Steinberg, Peter D Han, Paul K Drain, Lea M Starita, Matthew J Thompson, Barry R. Lutz

*Corresponding author. Email: blutz@uw.edu

This PDF file includes:

Supplementary Text
Figs. S1 to S10
Tables S1 to S5

Other Supplementary Materials for this manuscript include the following:

Movies S1 to S2

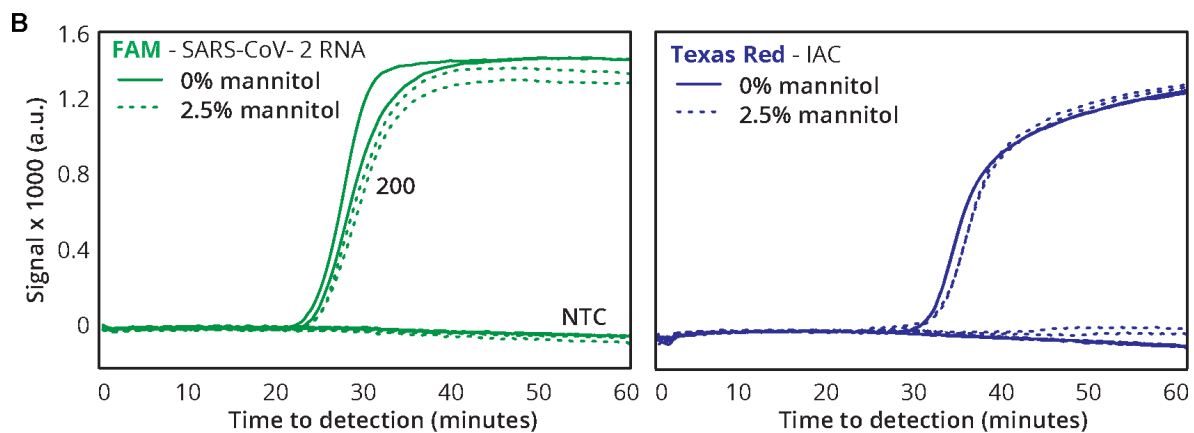
Supplementary Text

Development of lyophilized RT-LAMP formulation

Trehalose can stabilize several enzymes, but we found that 2.5% (w/v) trehalose resulted in a slower reaction at 63°C, the optimal reaction temperature of the excipient-free RT-LAMP. An increase of reaction temperature to 65°C can speed up the trehalose-containing RT-LAMP reactions but resulted in unreliable detection at 20 RNA copies/reaction (**Fig. S1**).

A

Target (copies/reaction)	min to detection							
	65 °C		63 °C		59 °C		55 °C	
	SARS-CoV-2	IAC	SARS-CoV-2	IAC	SARS-CoV-2	IAC	SARS-CoV-2	IAC
0	N/A	27.3, 27.7	N/A	31.8, 30.7	N/A	44.7, 42.6	N/A	N/A
20	N/A	29.8, 27.5	N/A, 31.63	30.6, 32.1	N/A, 43.0	42.0, 42.8	N/A	N/A, 60.4
200	N/A	27.3, 27.4	N/A, 27.86	29.4, 39.5	N/A, 43.2	47.9, 40.4	N/A	N/A, 62.0
2000	24.7, 28.6	N/A	28.0, 28.2	30.3, 32.8	N/A, 51.0	43.3, 41.8	N/A	N/A, 60.3



% mannitol	Target (copies/reaction)	SARS-CoV-2 (min to detection)	IAC (min to detection)
0	0	N/A	33.0, 33.0
	20	25.0, 25.7	N/A
2.5	0	N/A	33.9, 34.0
	20	26.3, 26.3	N/A

Fig. S1. Effects of excipients on fresh RT-LAMP reactions tested on a commercial real-time thermal cycler.

(A) Time to detection of SARS-CoV-2 RNA and IAC targets in the RT-LAMP containing 2.5% (*w/v*) trehalose and 0-2000 copies of SARS-CoV-2 RNA/40 μ L reaction. N/A means undetectable. For each condition, two technical replicates were run at 4 different reaction temperatures (i.e., 55°C, 59°C, 63°C, and 65°C). (B) Time to detection of SARS-CoV-2 RNA and IAC targets in the RT-LAMP reactions containing 0 or 20 copies of SARS-CoV-2 RNA/reaction, with and without 2.5% (*w/v*) mannitol, at 63°C.

non-SARS-CoV-2 RNA (copies/reaction)	SARS-CoV-2 RNA (copies/reaction)	min to detection	
		SARS-CoV-2	IAC
4000 copies SARS-CoV-1	0	N/A	29.0, 30
4000 copies SARS-CoV-1	100	23.5, 24.1	N/A
4000 copies MERS	0	N/A	29.8, 30.1
4000 copies MERS	100	24.7, 24.7	N/A

Fig. S2. Cross-reactivity of MERS and SARS in lyophilized RT-LAMP.

Detection time (min) of SARS-CoV-2 RNA and IAC targets in the presence of 4000 copies of either SARS-CoV-1 RNA or MERS RNA in 40 μ L RT-LAMP reactions at 63°C. Two technical replicates were conducted in each condition. In the reactions without SARS-CoV-2 RNA, we did not observe amplification of FAM signal but observed IAC amplification indicating the amplification reaction was functioning properly in each replicate. 100 copies of SARS-CoV-2 RNA were amplified in each positive control replicate, indicating proper function of SARS-CoV-2 amplification in this master mix.

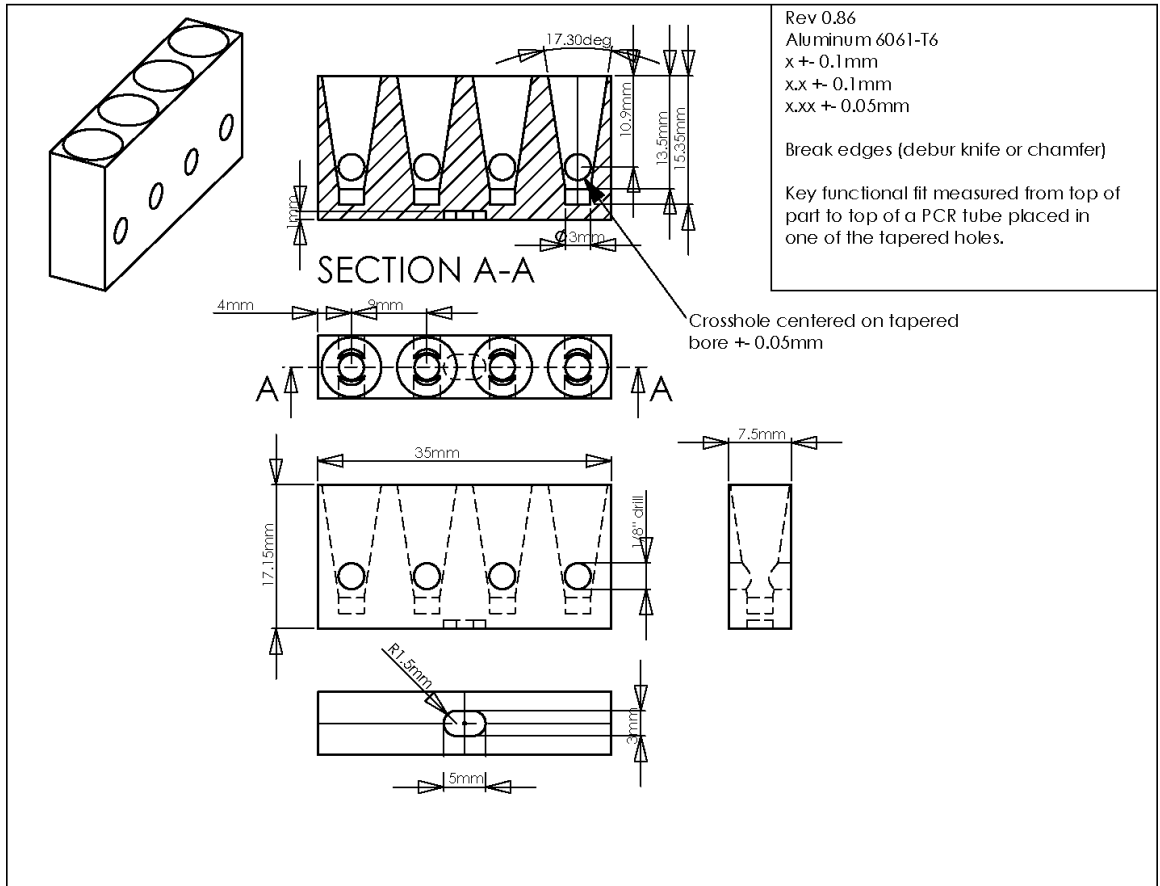


Fig. S3. Heat block used in Harmony COVID-19 device.

Drawing credit: Bryan Willman.

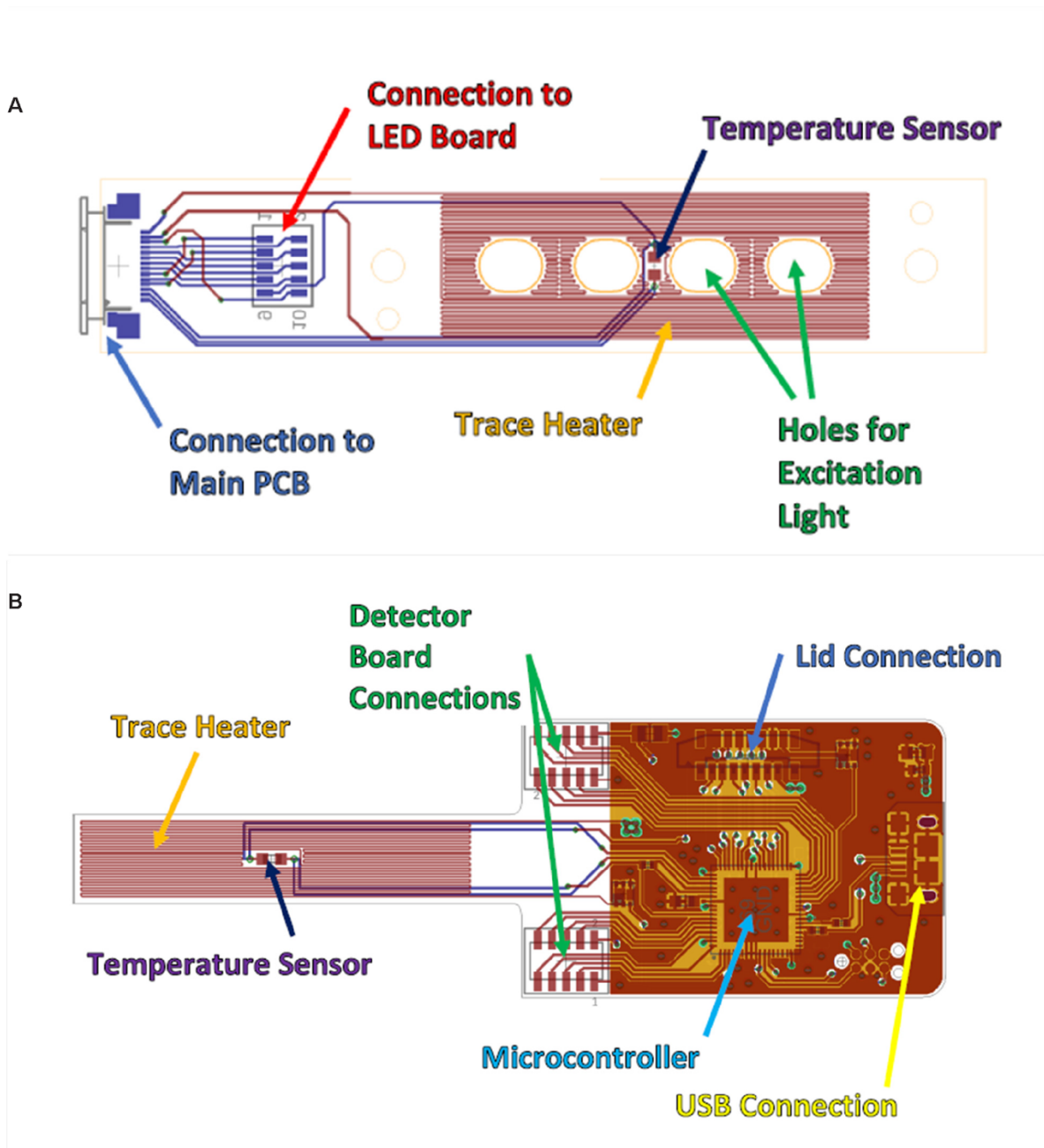


Fig. S4. The design of optical and heater circuit boards for the Harmony COVID-19 device. (A) LED board (B) the detector board

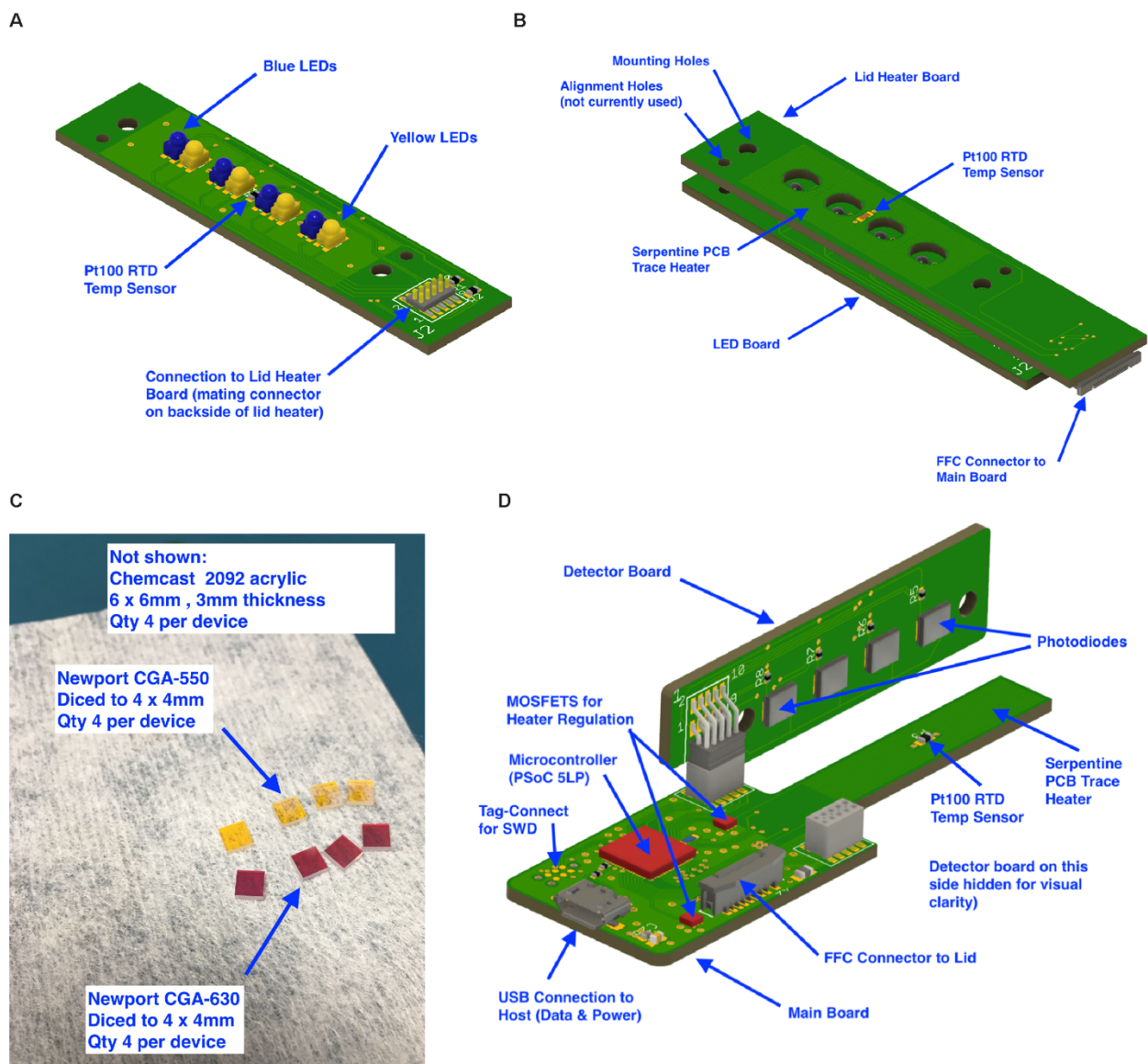
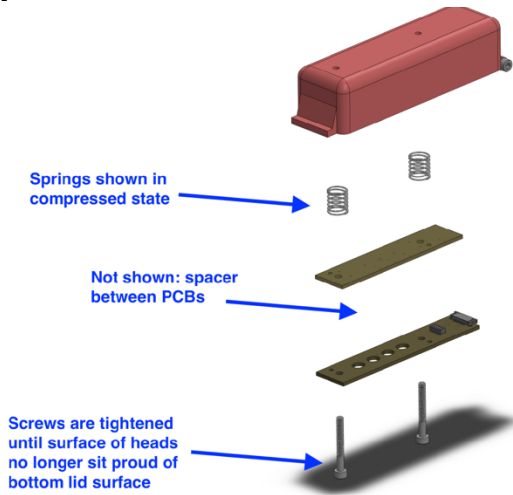


Fig. S5. Circuit board assembly and required parts.

(A) LED board. (B) LED board assembled to the lid heater board. (C) Custom-cut filter pieces. (D) Detector board and the main board. Each device require the following parts: thick film resistors (RCL12251R20FKEG, RCL12252R20FKEG, CRCW08050000Z0EBC and RCL12254R70FKEG from Vishey; RN73C1J75RBTDF from TE Connectivity; FTS-105-03-F-DV from Samtec; CR0402AJW-472GAS from Bourns), thin film resistors (RN73H1ETTP3003B25 from KOA Speer; ERJ-2RKF22R0X from Panasonic), multilayer ceramic capacitors (C0402C104M4RACAUTO, KEMET; 0603YC105KAT2A, AVX),

multilayer ceramic capacitor (GRM188R60J226MEA0D, Murata), USB connectors (10118193-0001LF and 10118192-0001LF, FCI / Amphenol), FFC & FPC connector (52745-1497, Molex), standard yellow LEDs (LY E63B-CBEA-26-1-Z, Osram Opto Semiconductor), standard blue LEDs (150141BS63140, Würth Elektronik), board-to-board & mezzanine connector (CLP-105-02-F-D and FLE-105-01-G-DV-K-TR, Samtec), FFC/FPC jumper cables (15166-0143, Molex), FFC & FFC connector (52559-1452, Molex), 2 headers & wire Housings (FTSH-105-01-F-DH, Samtec), MOSFET (FDMA410NZ, ON Semiconductor), 2 board-mount temperature sensors (PTS060301B100RP100 from Vishay), ARM Microcontrollers (CY8C5888LTI-LP097, Cypress Semiconductor), Photodiodes (SFH 2201, Opto Semiconductor).

A**B**

All fasteners are M3 size
Flat flex cable not shown

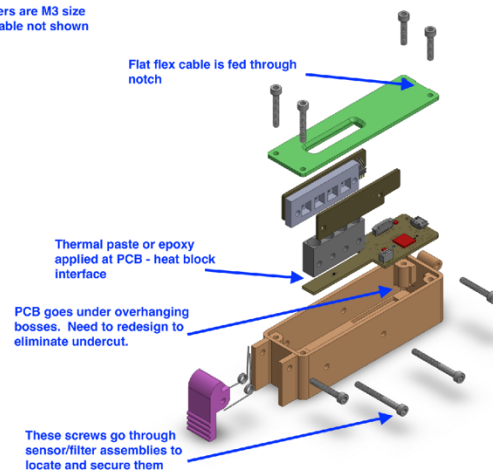


Fig. S6. Device assembly.

(A), Top part (B), Bottom part of the device are assembled using 10 screws, 2 compression springs, and 2 torsion springs (McMaster-Carr, Elmhurst, IL) including: Torsion Spring 90 Degree Angle, Left-Hand Wound, 0.204" OD (9271K109), Torsion Spring 90 Degree Angle, Right-Hand Wound, 0.204" OD (9271K143), Black-Oxide Alloy Steel Socket Head Screw M3 x 0.5 mm Thread, 5 mm Long (91290A110), Black-Oxide Alloy Steel Socket Head Screw M3 x 0.5 mm Thread, 10 mm Long (91290A115), Black-Oxide Alloy Steel Socket Head Screw M3 x 0.5 mm Thread, 15 mm Long (91290A572), Black-Oxide Alloy Steel Socket Head Screw M3 x 0.5 mm Thread, 20 mm Long (91290A123), Black-Oxide Alloy Steel Socket Head Screw M3 x 0.5 mm Thread, 25 mm Long (91290A125), Black-Oxide Alloy Steel Socket Head Screw M3 x 0.5 mm Thread, 30 mm Long, Partially Threaded (91290A130), Music-Wire Steel Compression Springs 0.875" Long, 0.36" OD, 0.296" ID (9434K73).

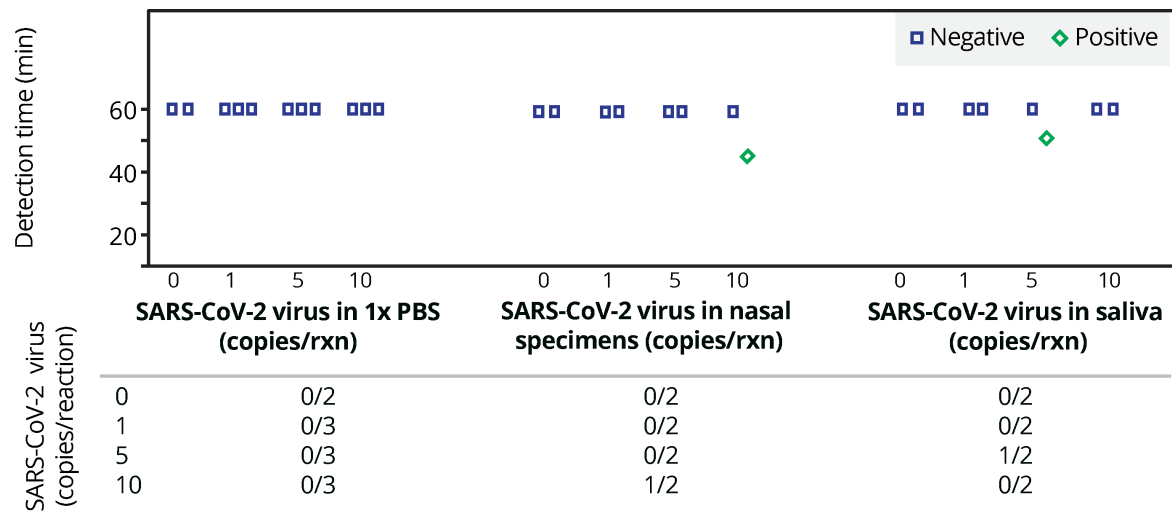
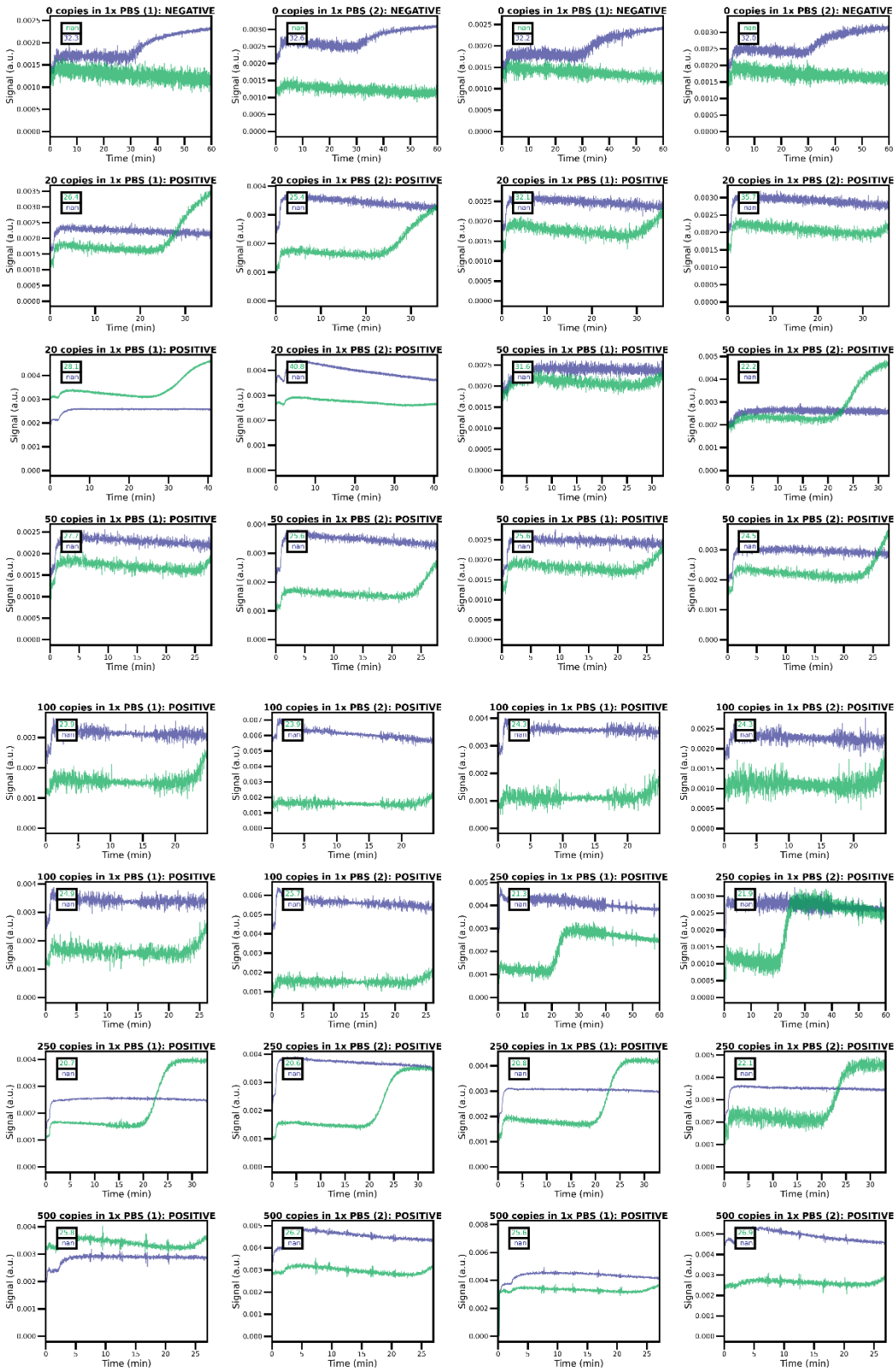
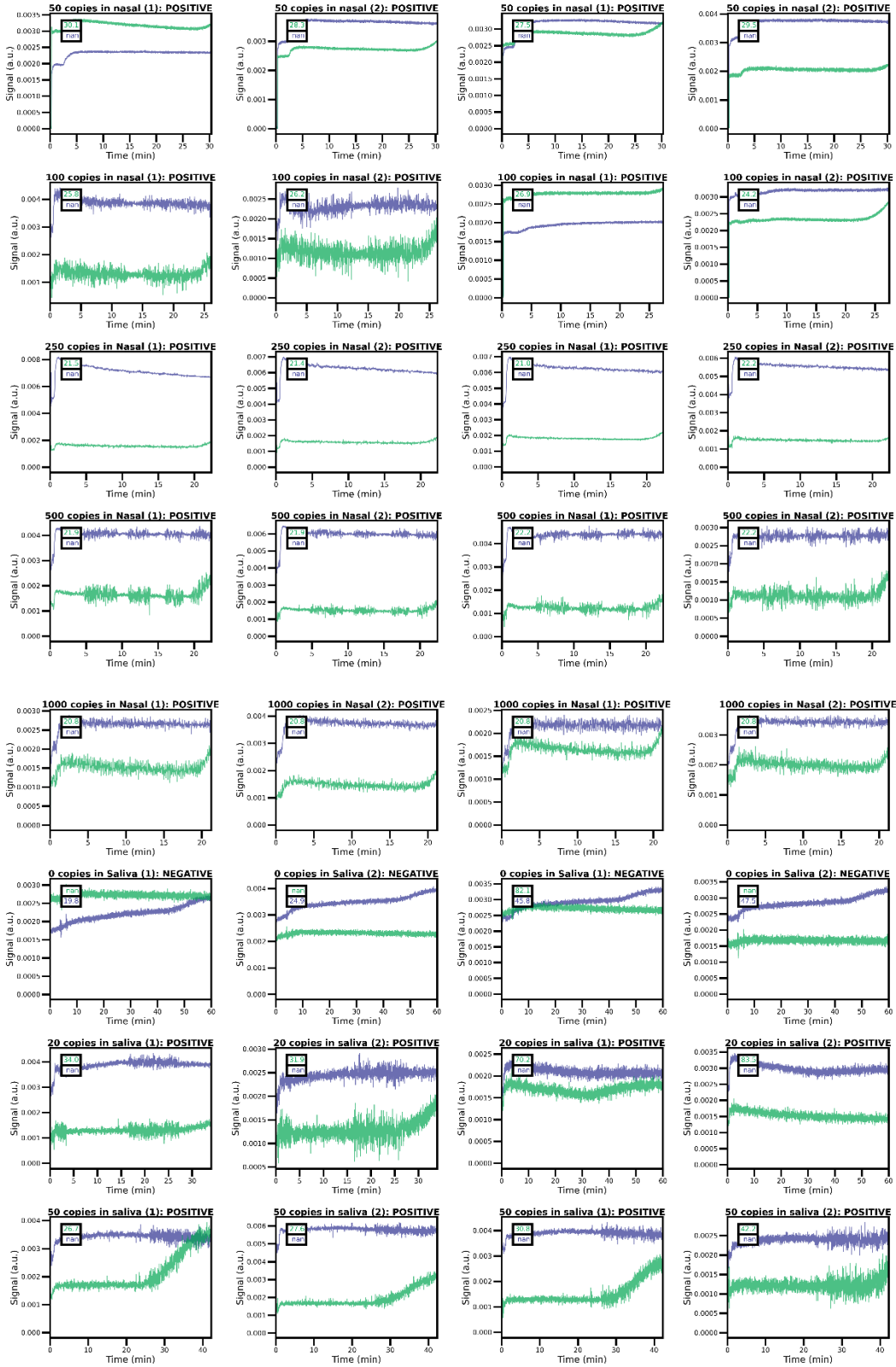
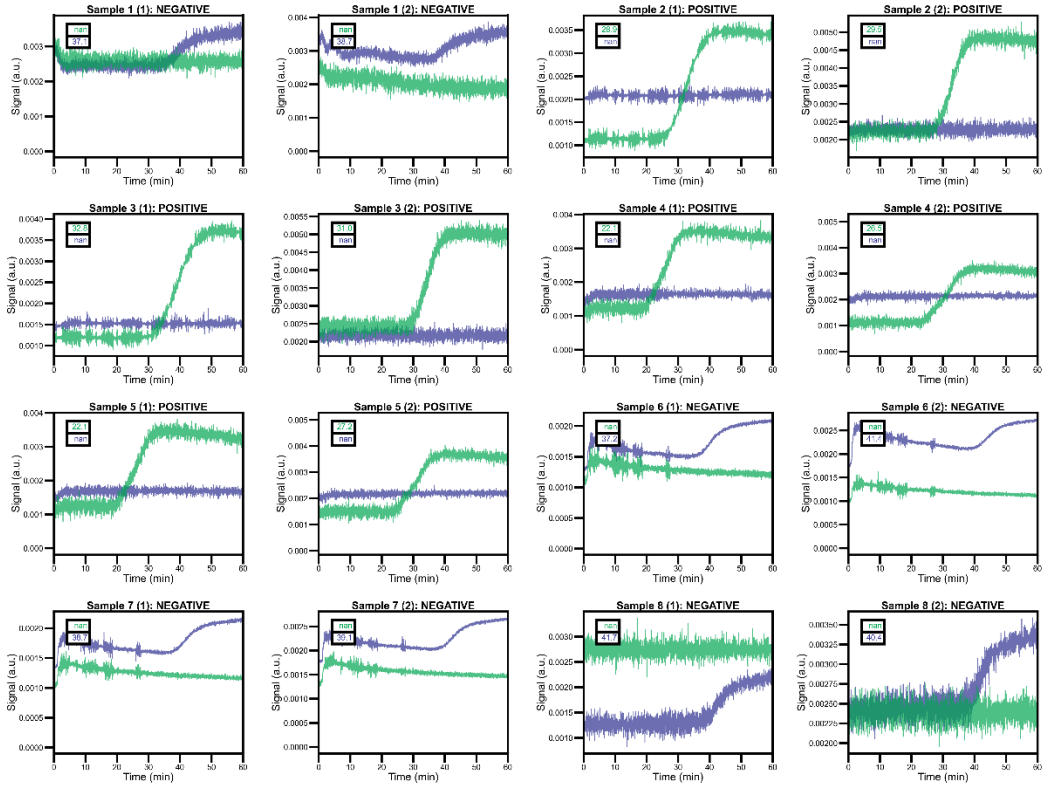


Fig. S7. Analysis of XPRIZE panel of contrived samples containing less than 20 copies/reaction.

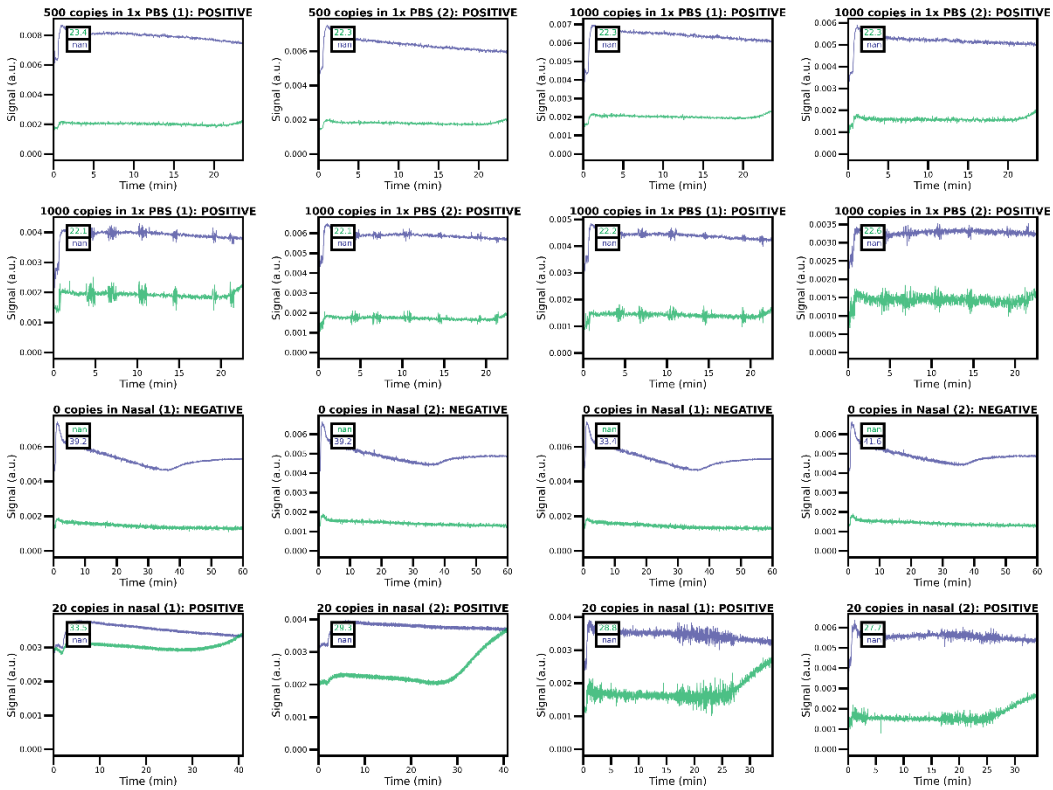
A

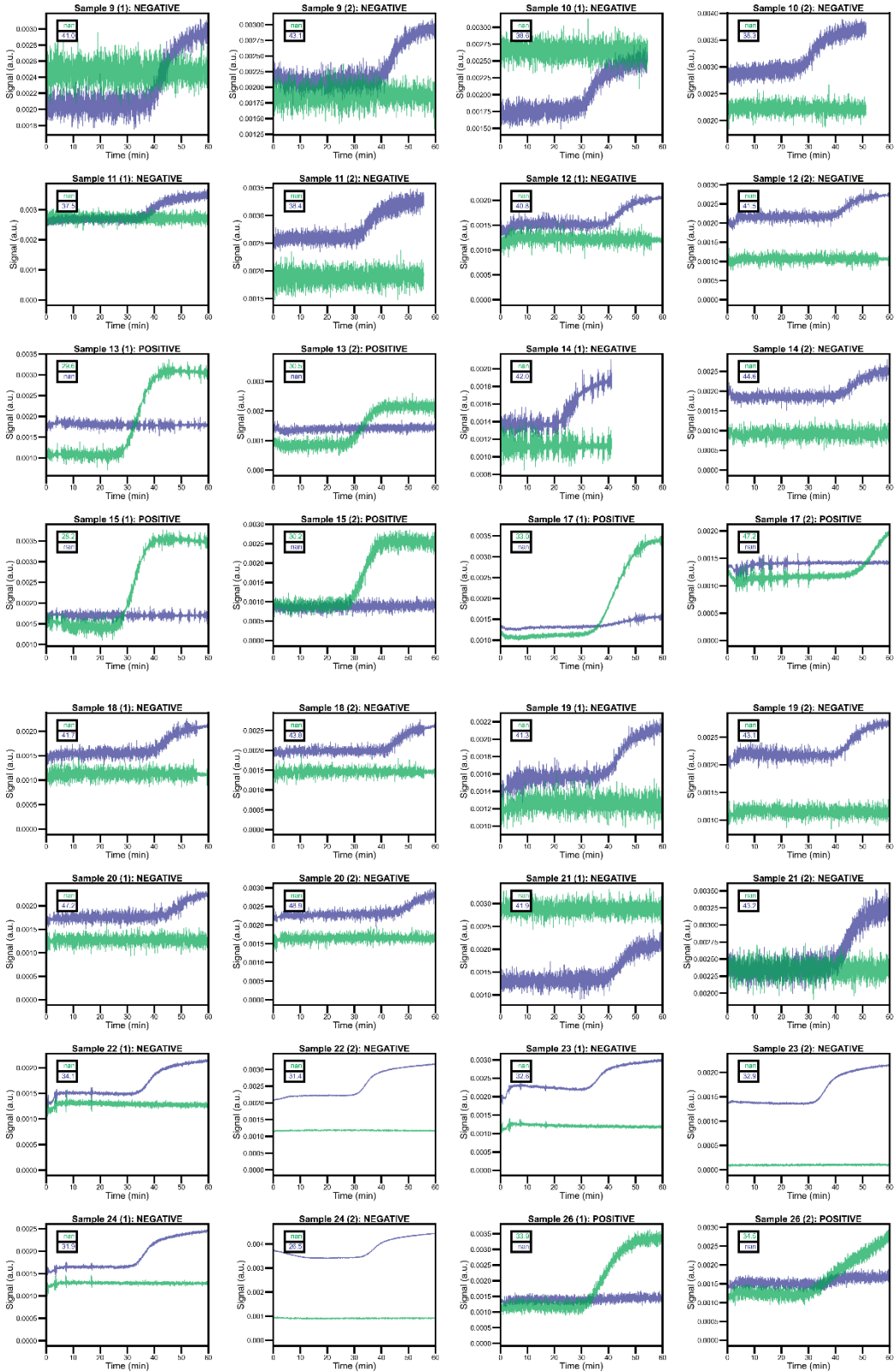


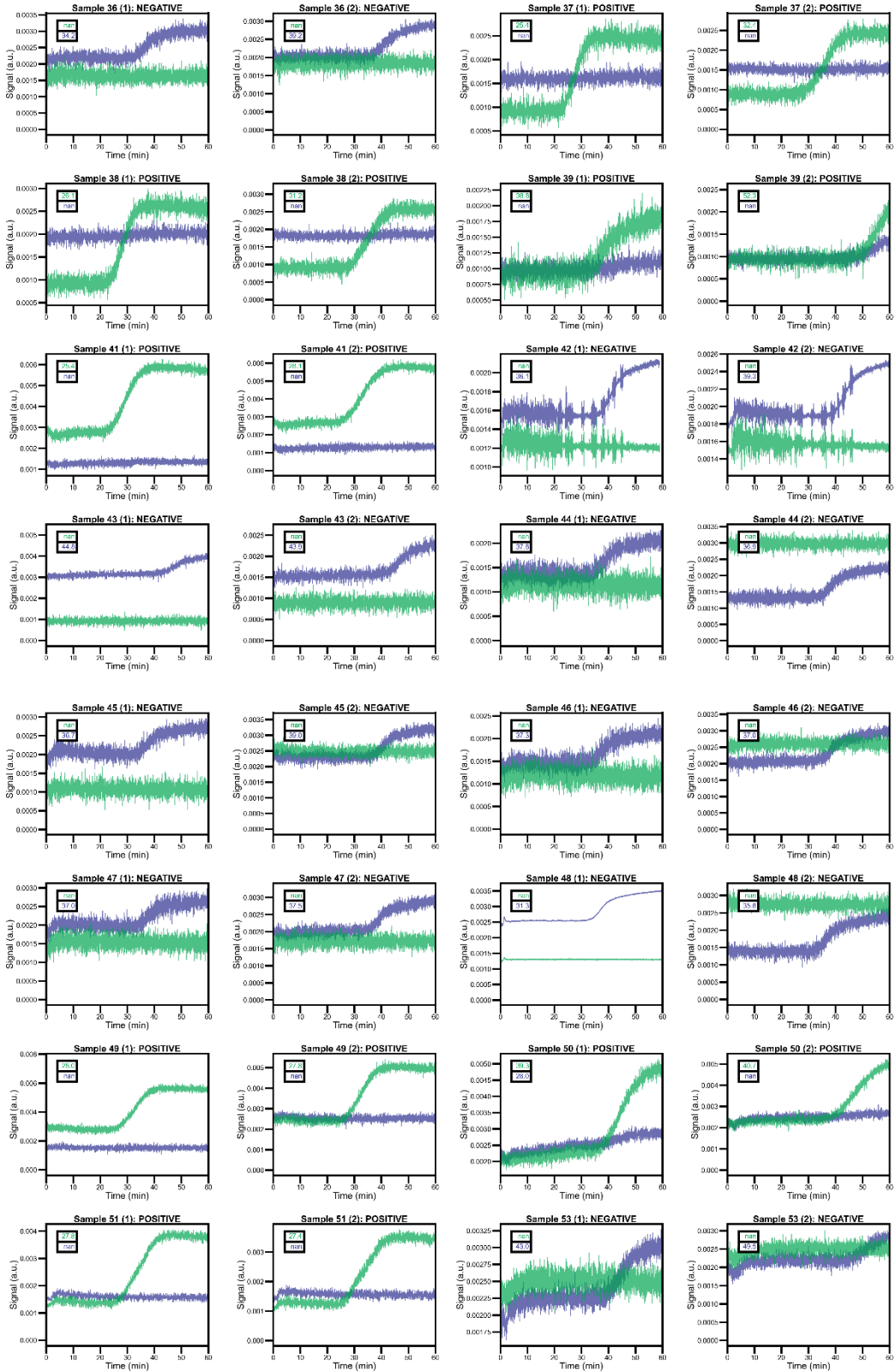


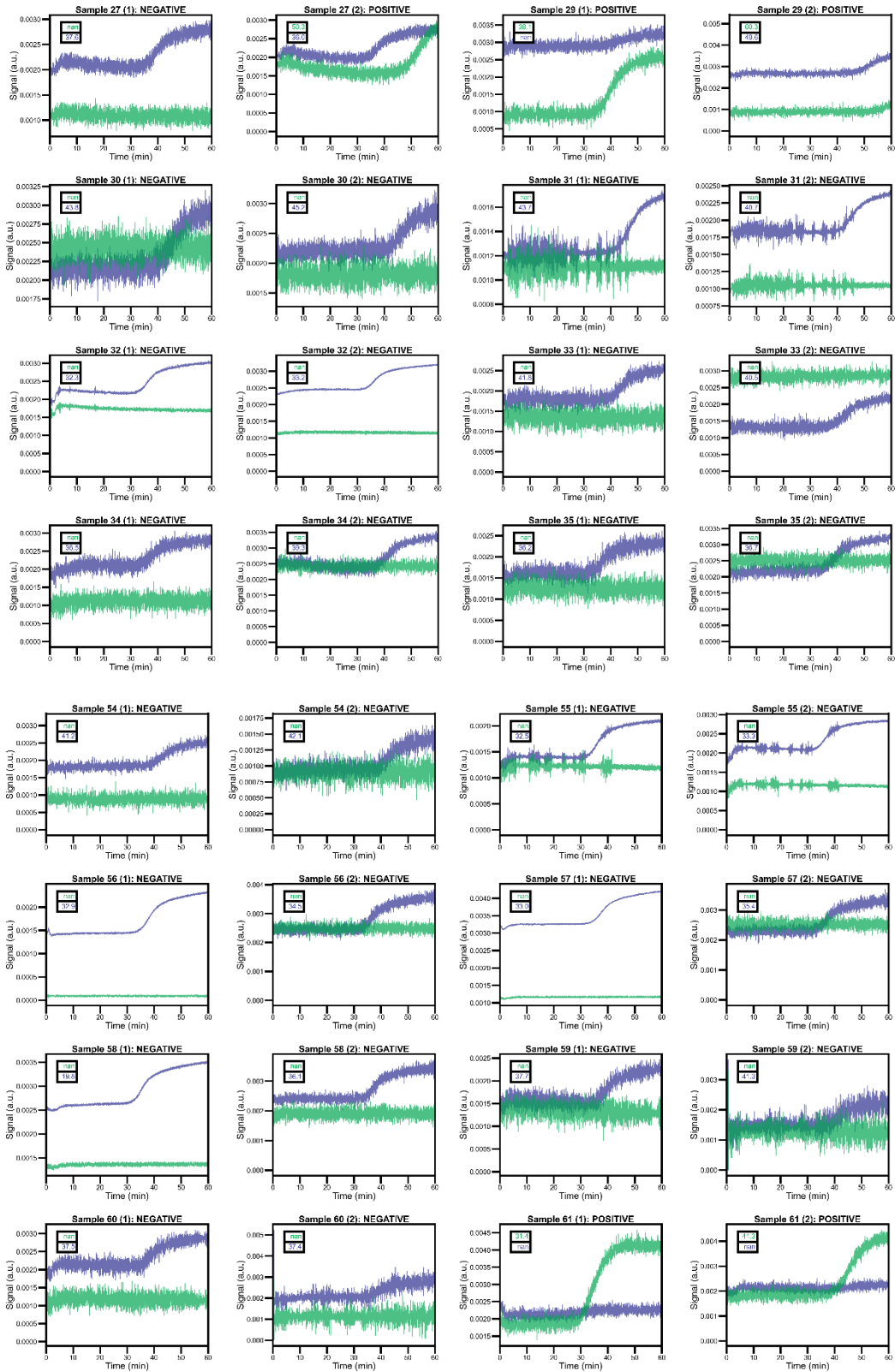


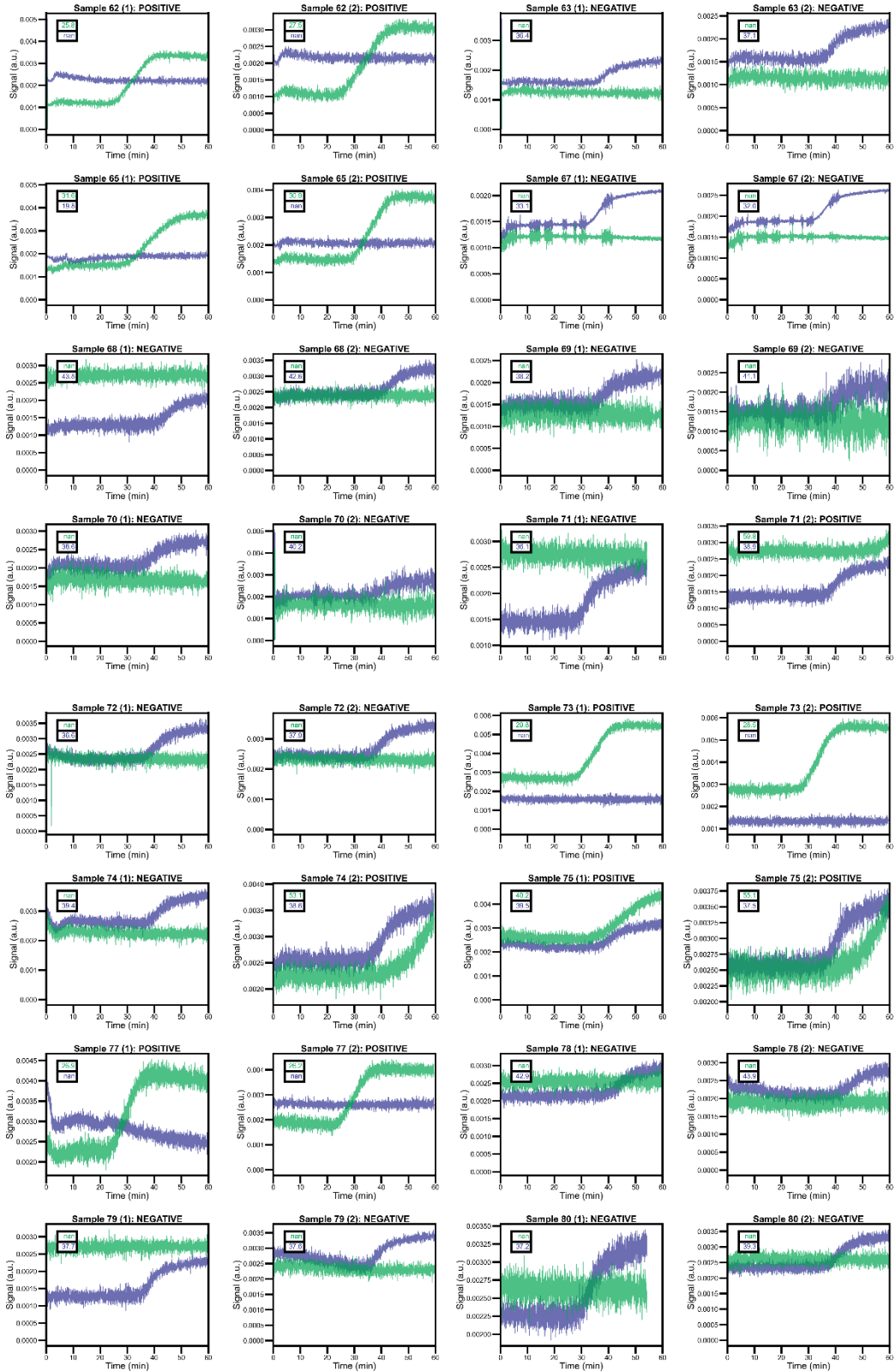
B

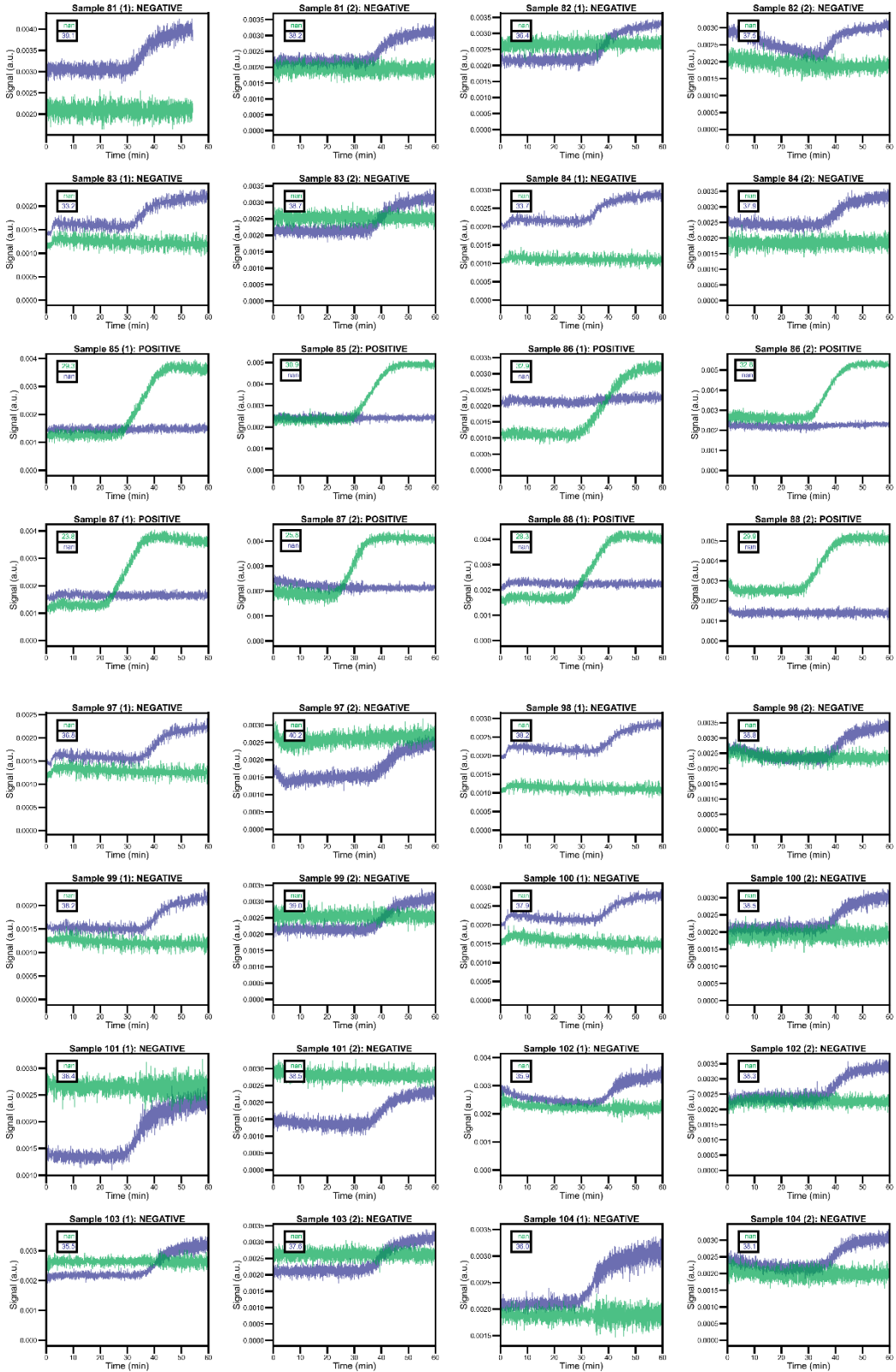


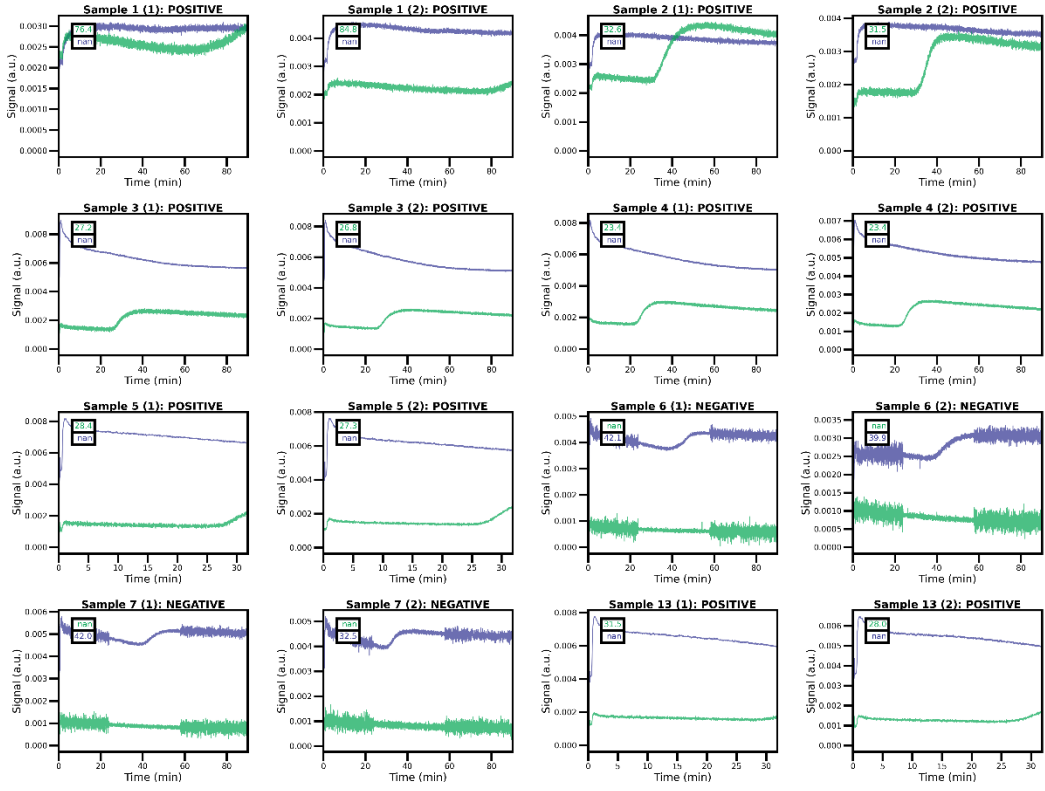




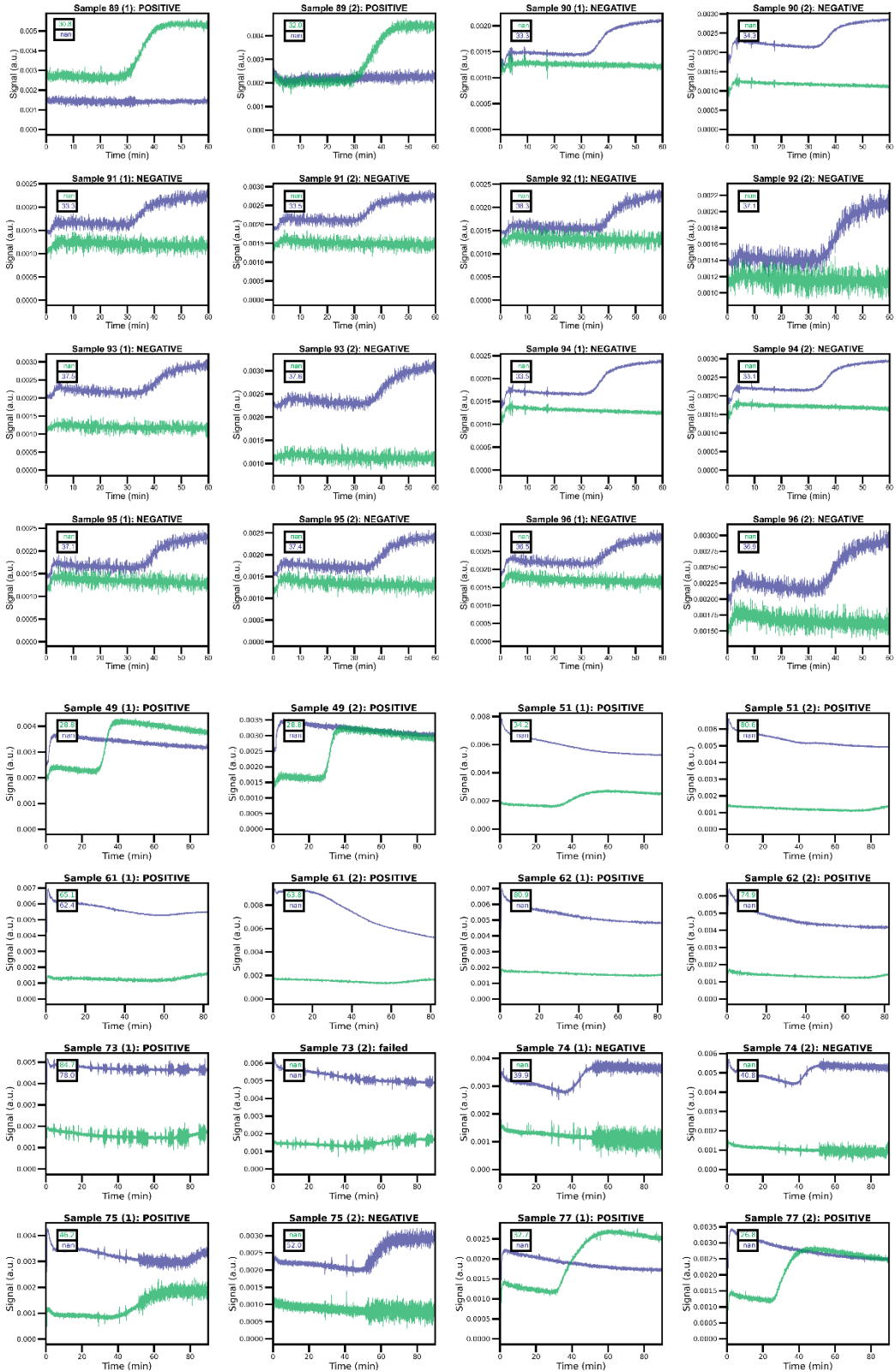








C



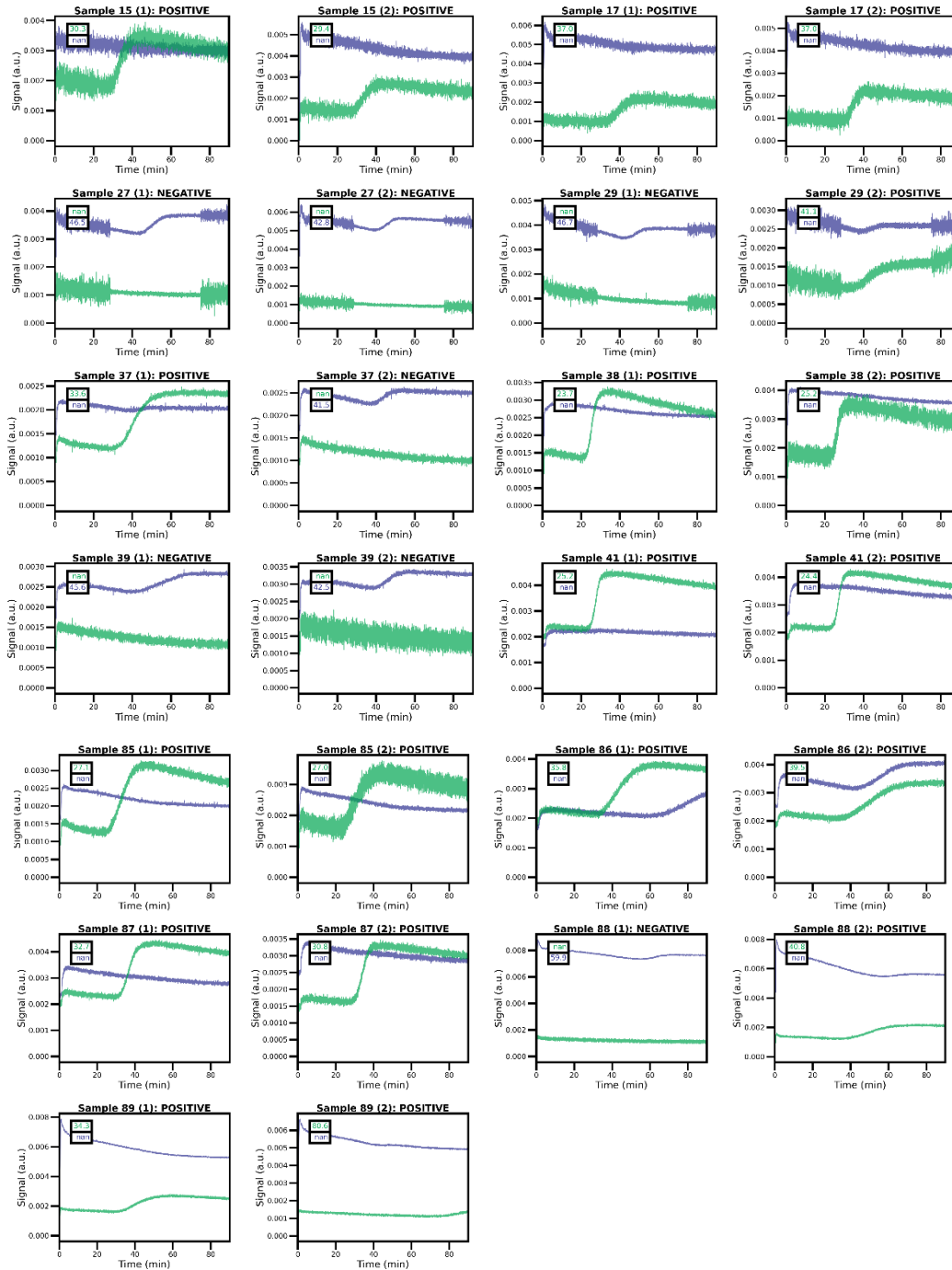


Fig. S8. Real-time amplification curves of samples analyzed by HARMONY Covid-19. (A) XPRIZE panel of contrived specimens (B) Extracted RNA from VTM specimens (C) VTM specimens without extraction. Data were exported from the software as .txt file and plotted using in-house Python code available at https://github.com/sgillig1/COVID_Data_Analysis.

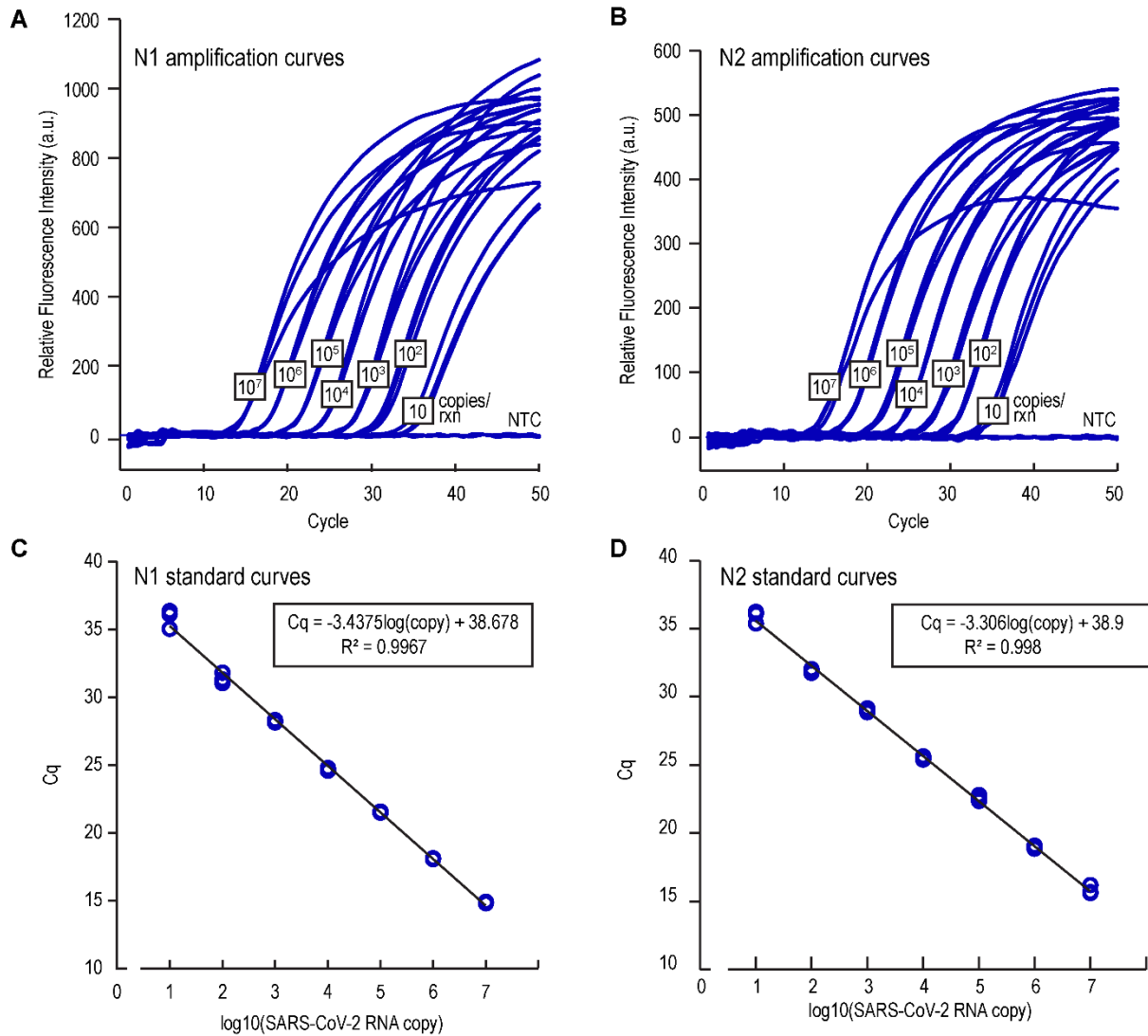
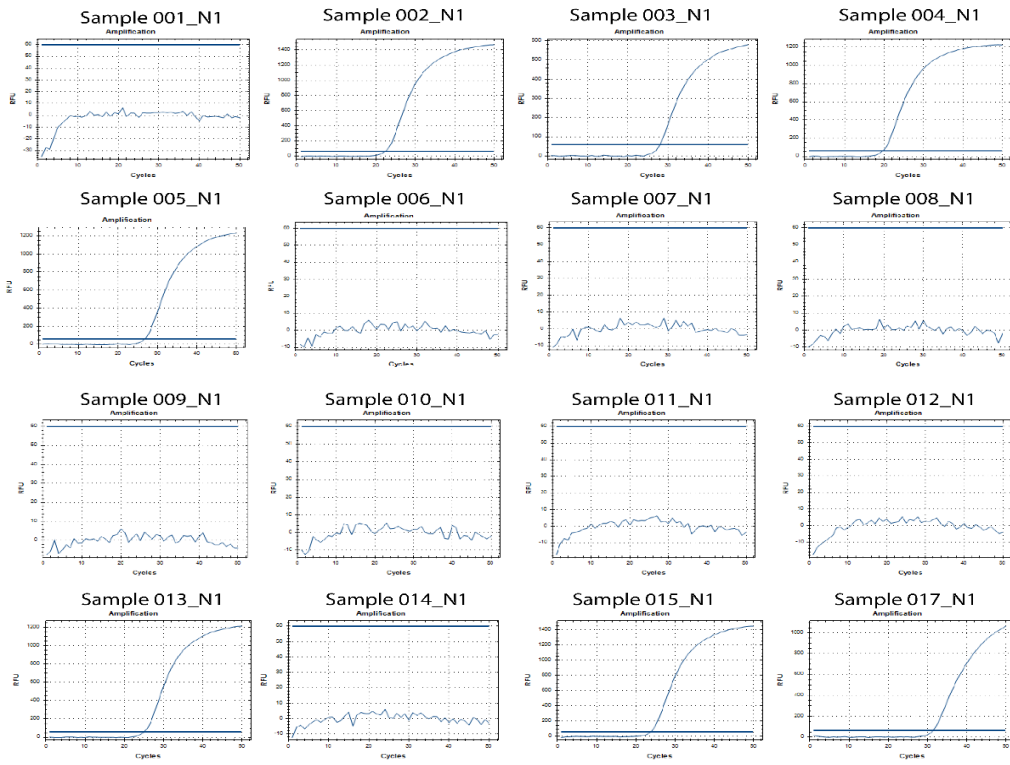
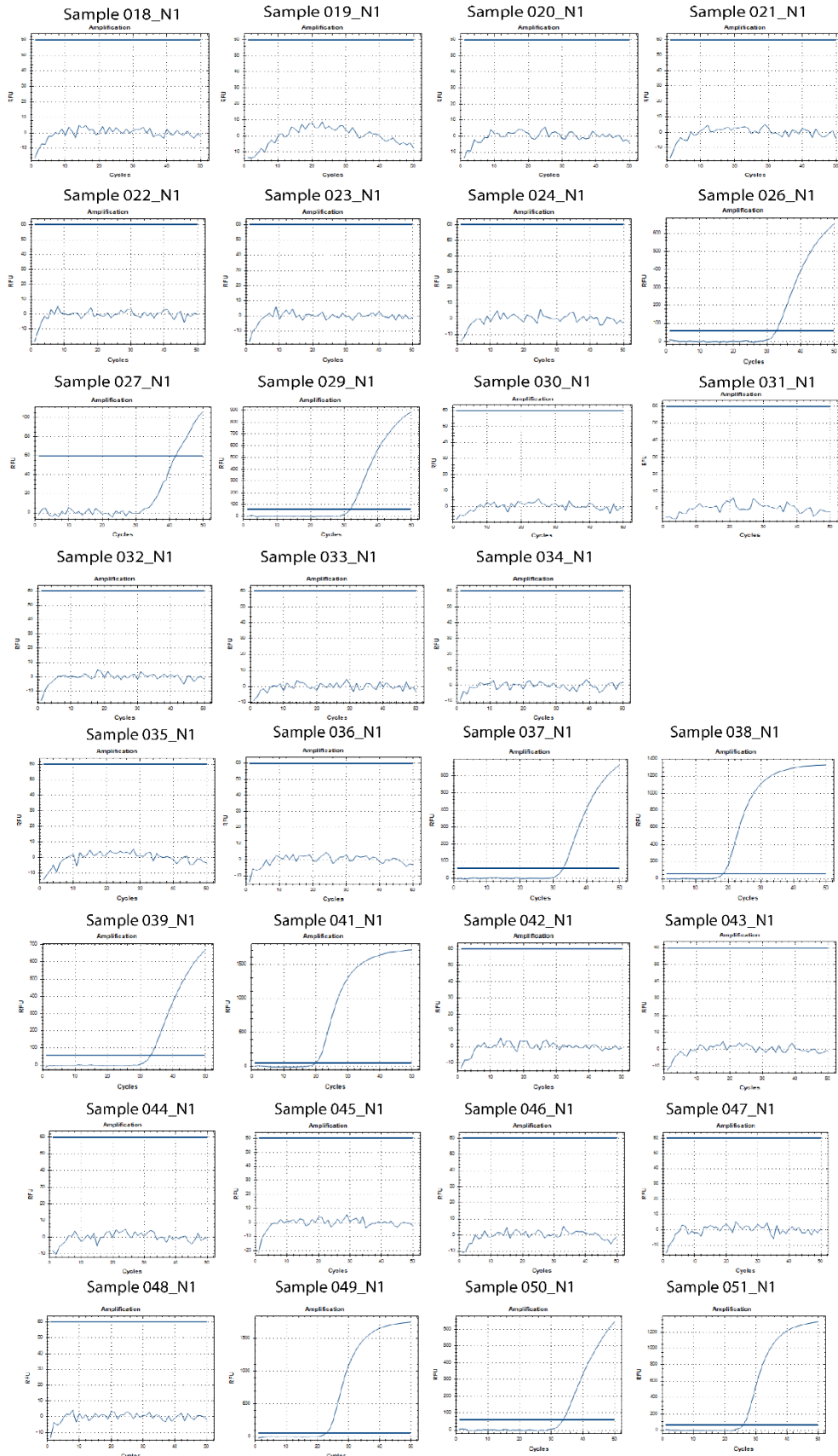
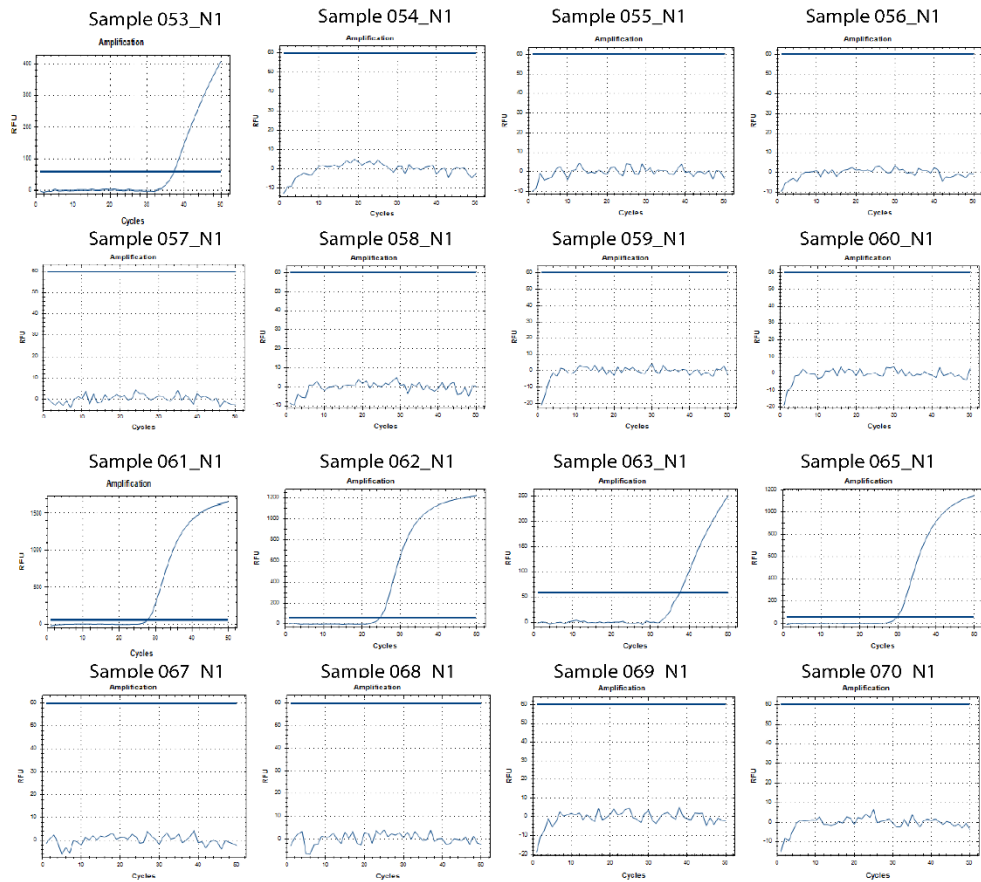


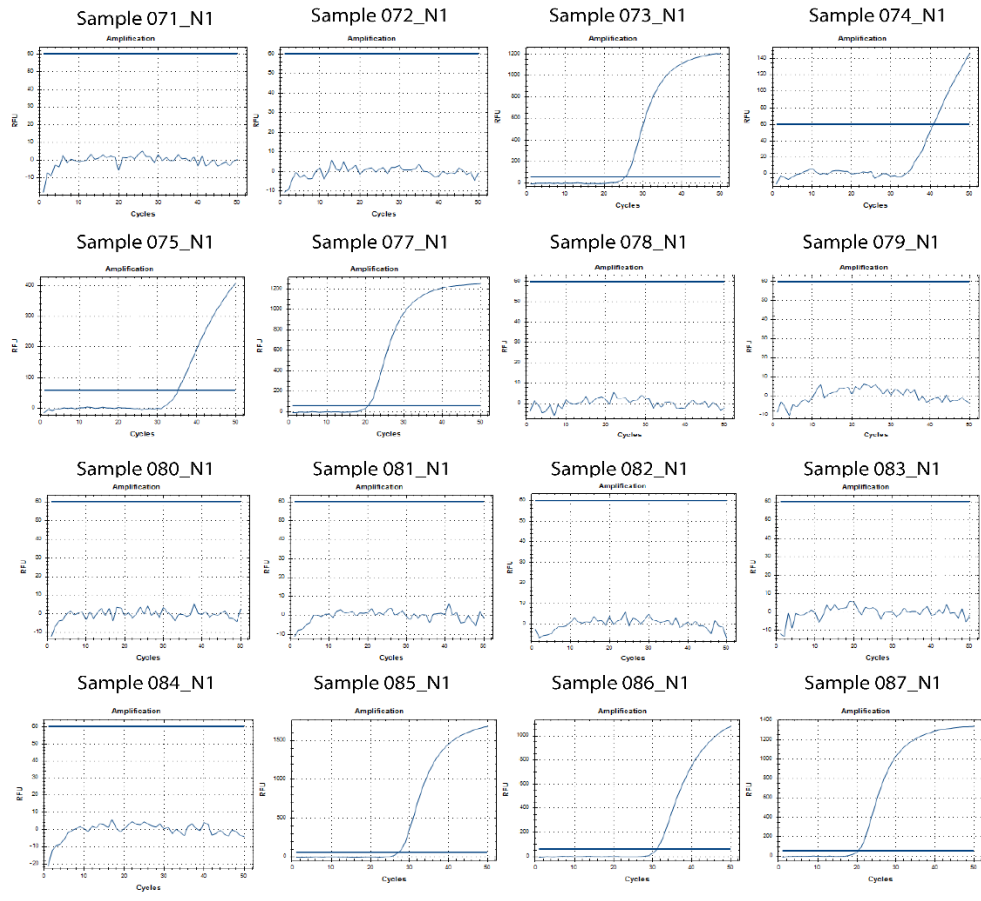
Fig. S9. Standard curves of RT-qPCR using CDC N1 and N2 primers. (A) Amplification curves of N1 assay and (B) N2 assay ranging from 0 to 10⁷ copies/reaction (txn) of SARS-CoV-2 synthetic RNA. Calibration curves for (C) N1 and (D) N2 assays.

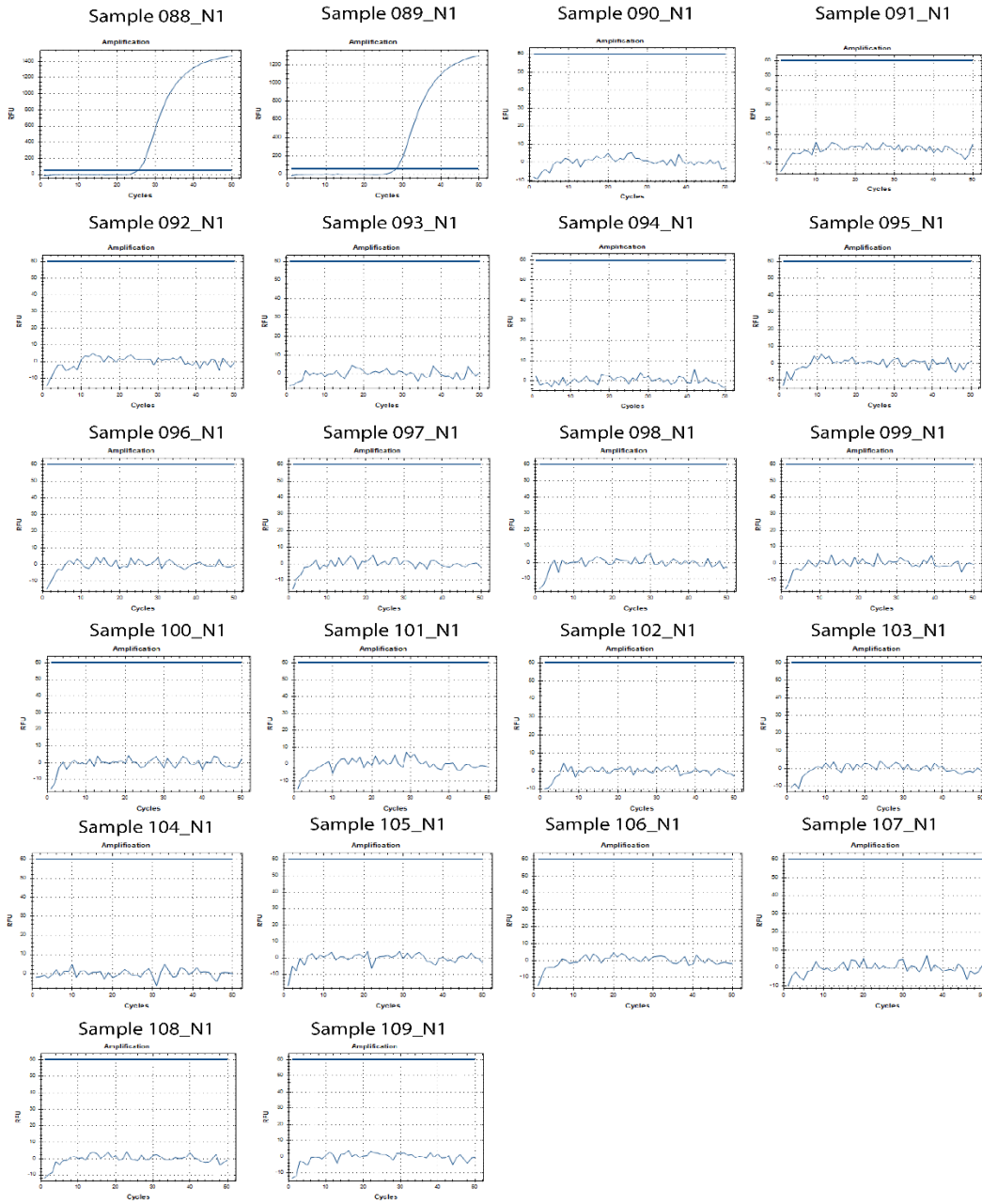
A



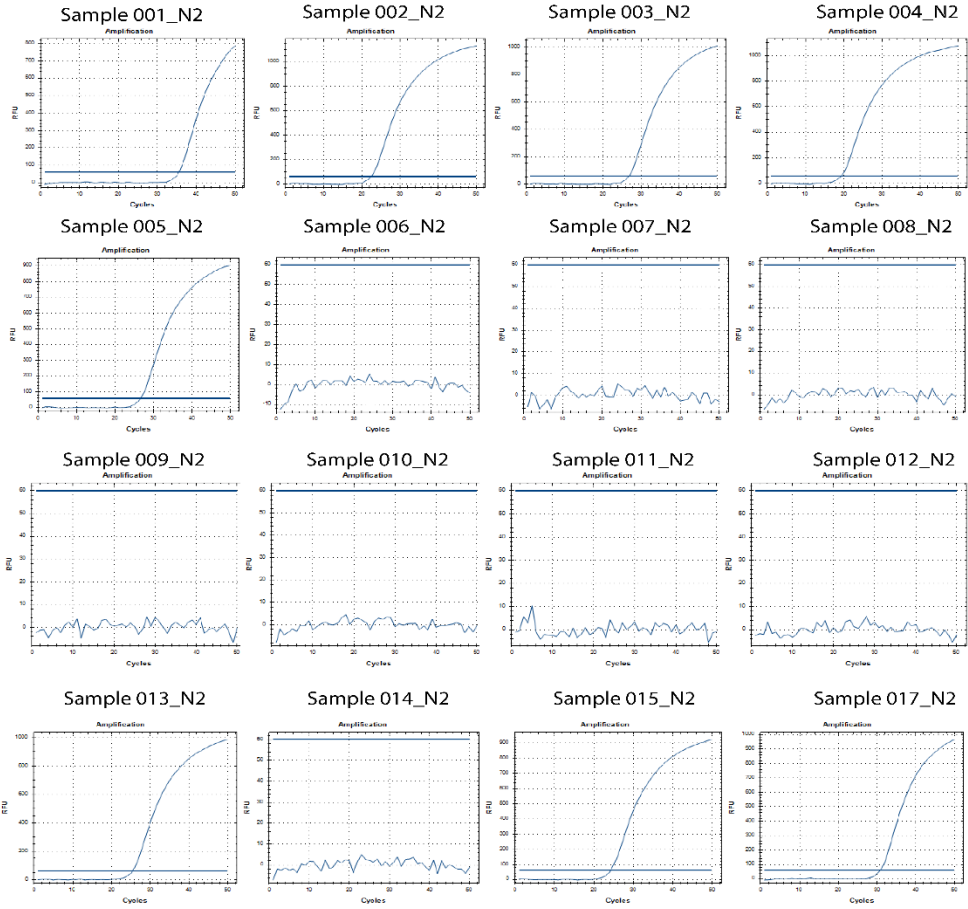


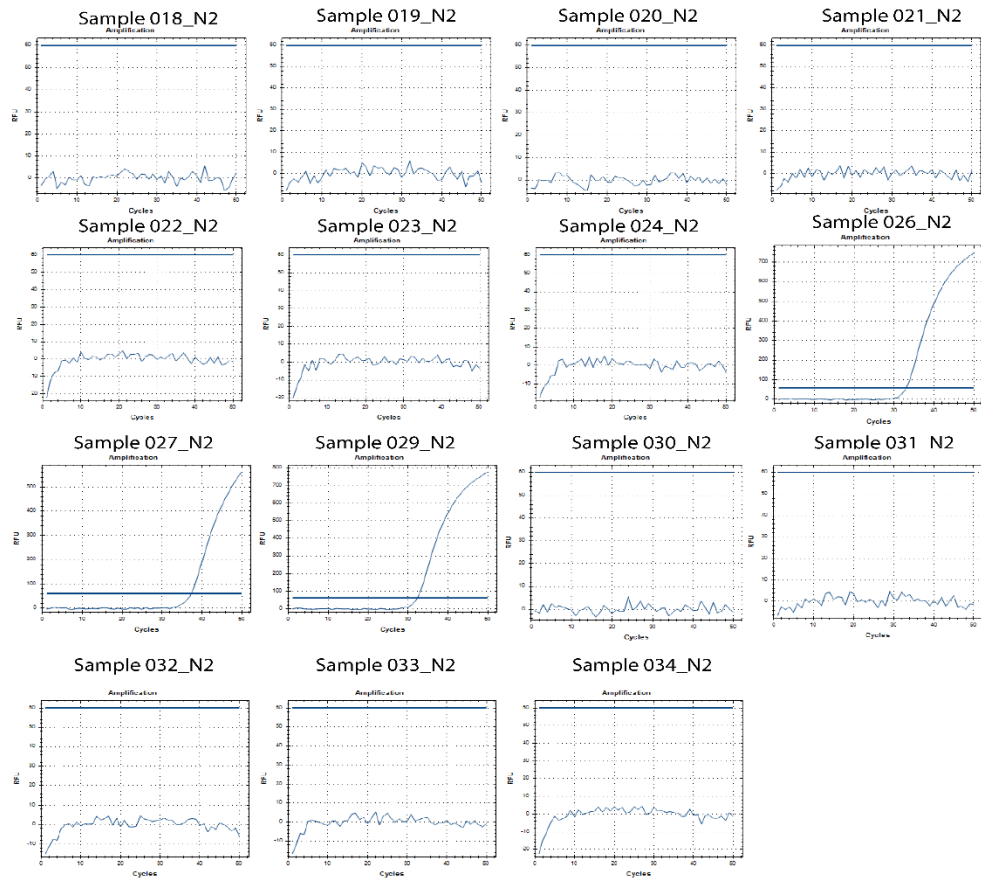


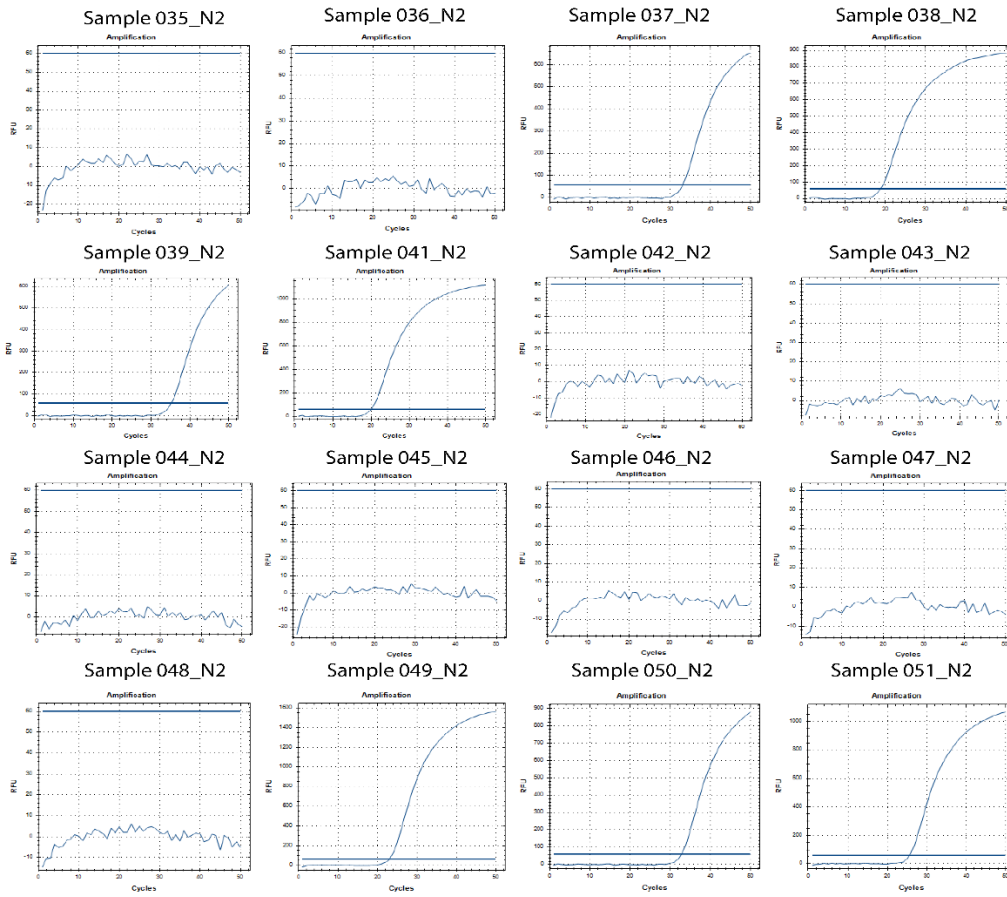


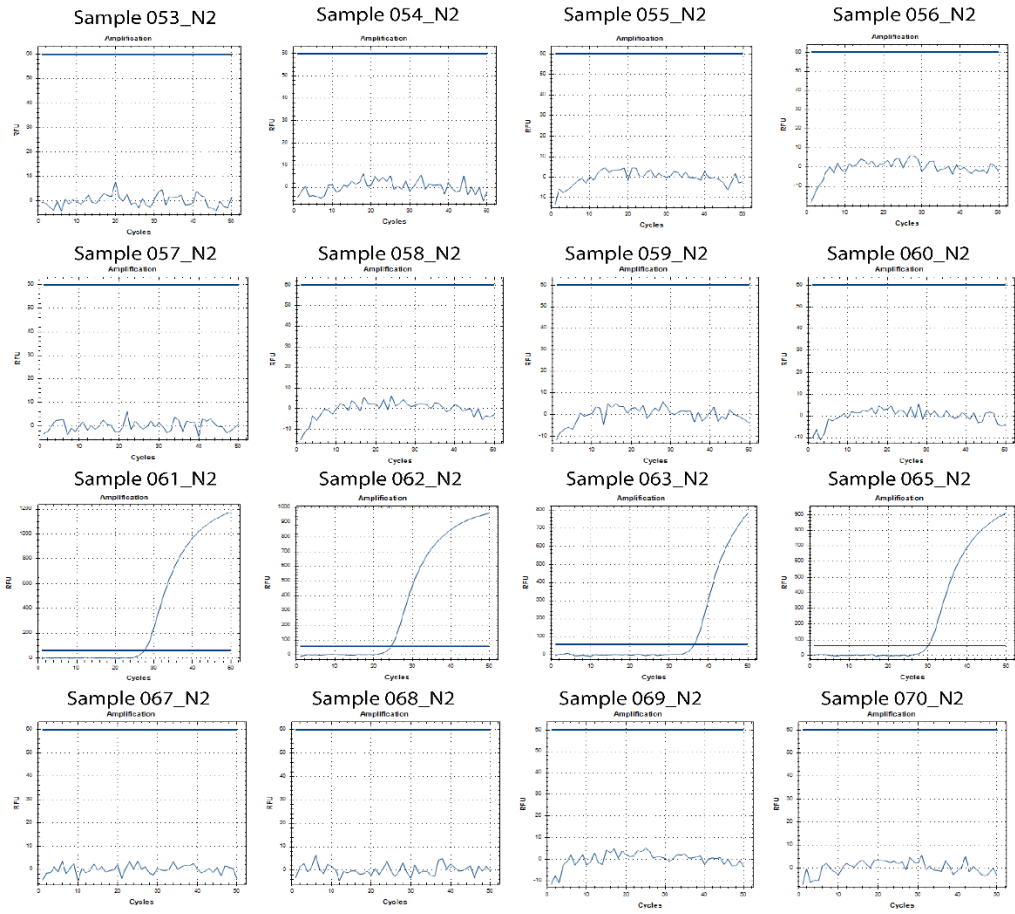


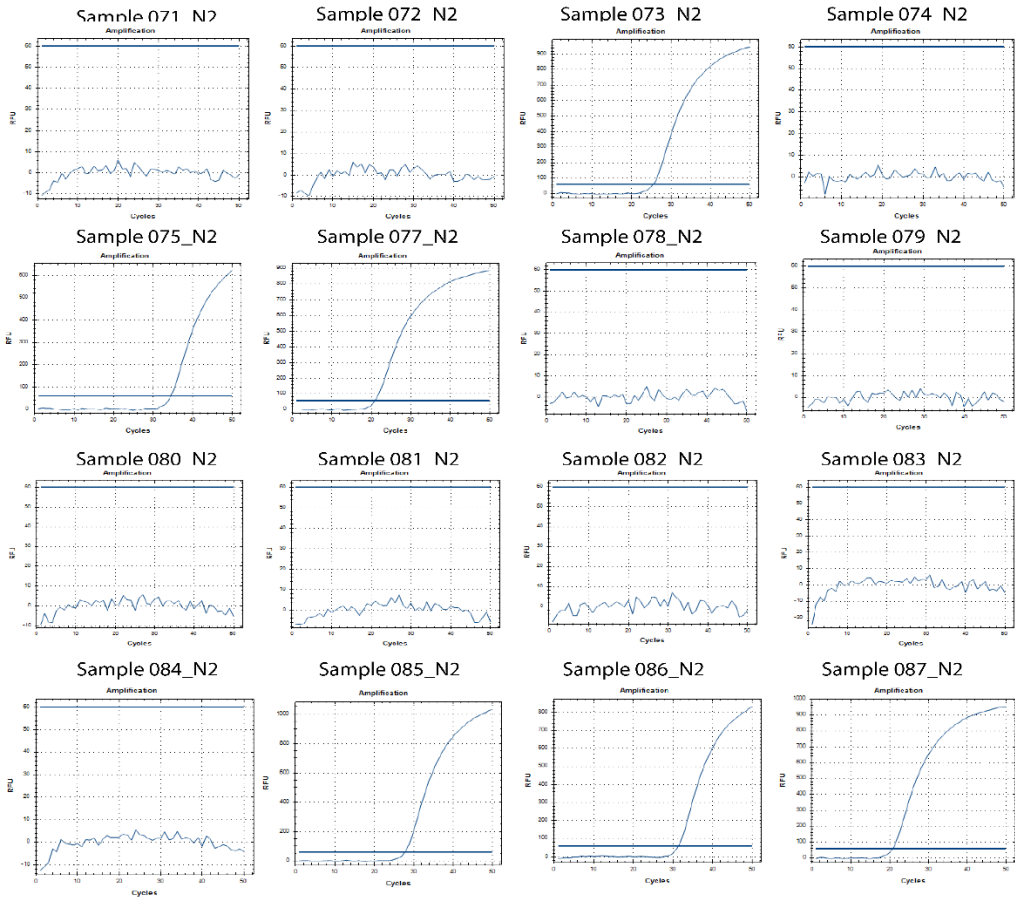
B

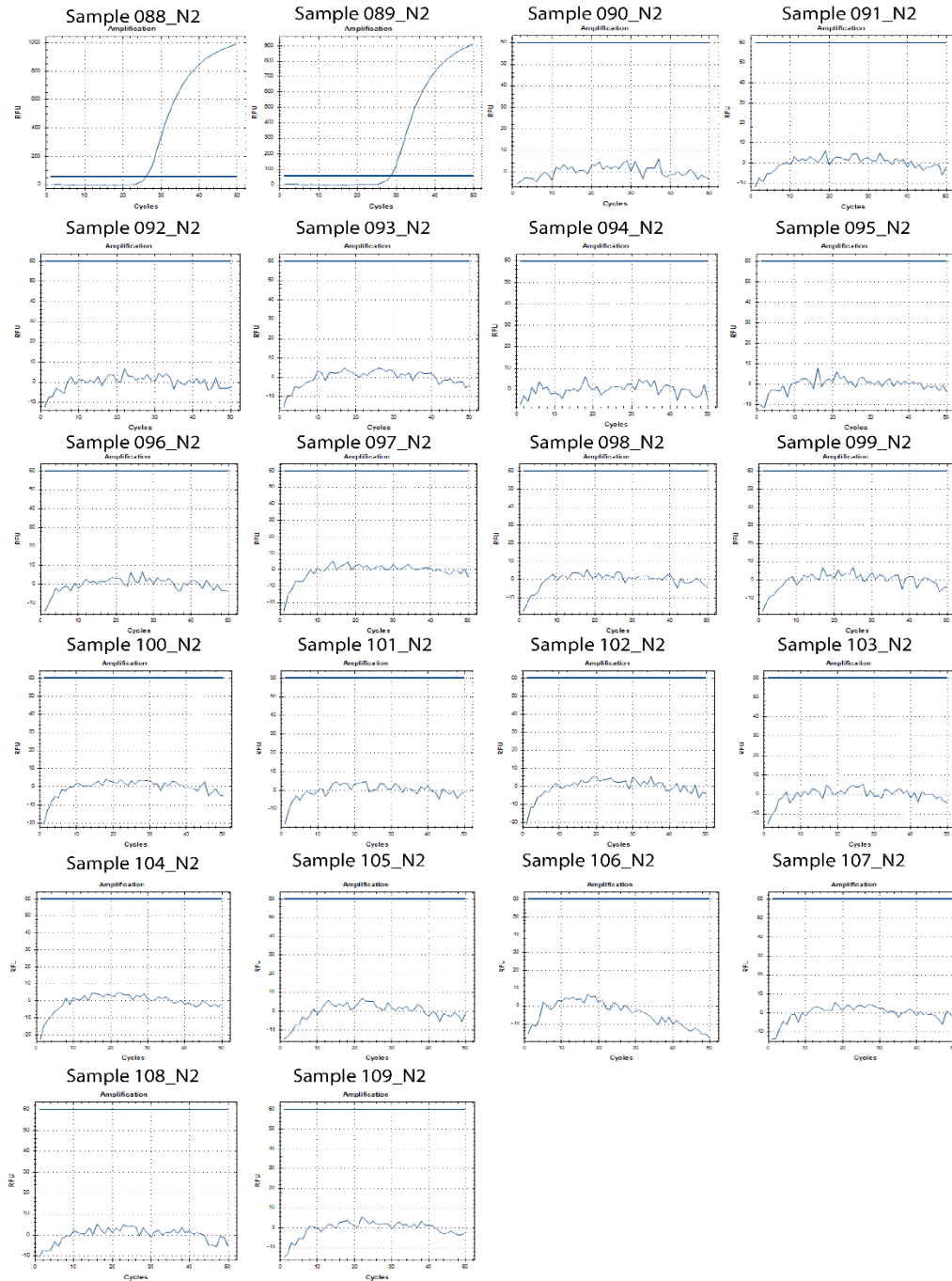




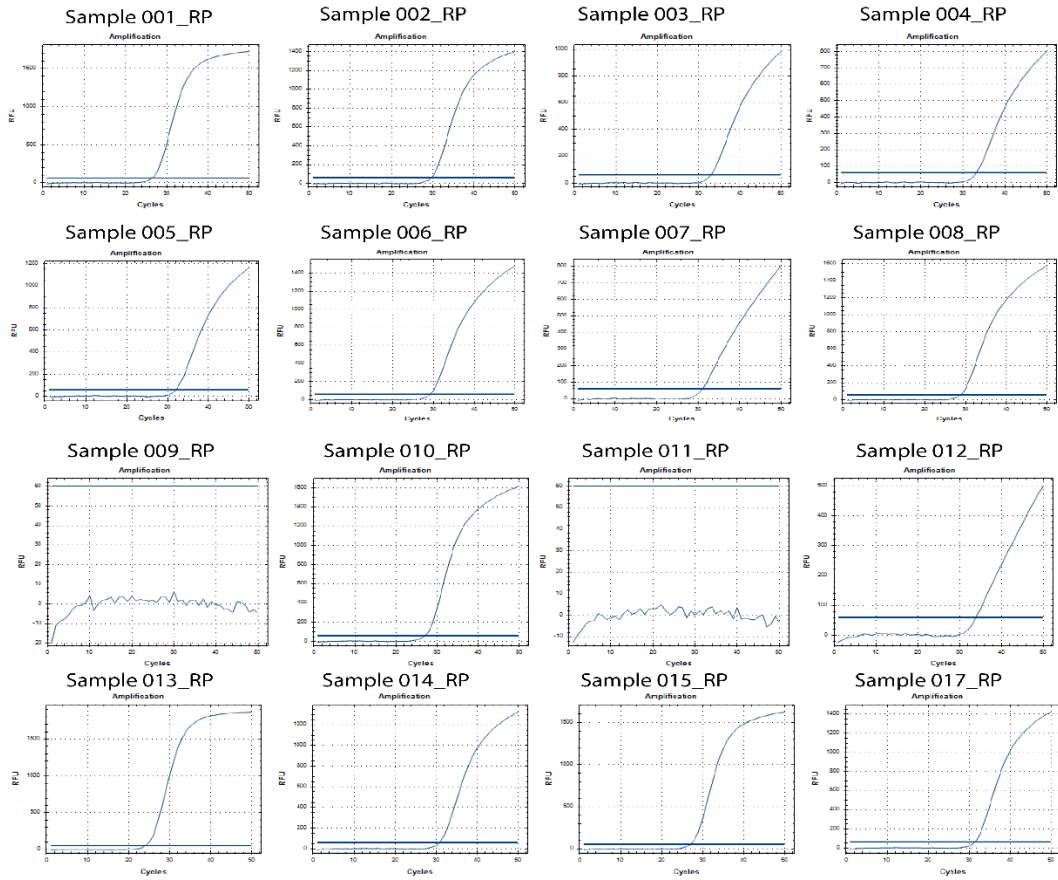


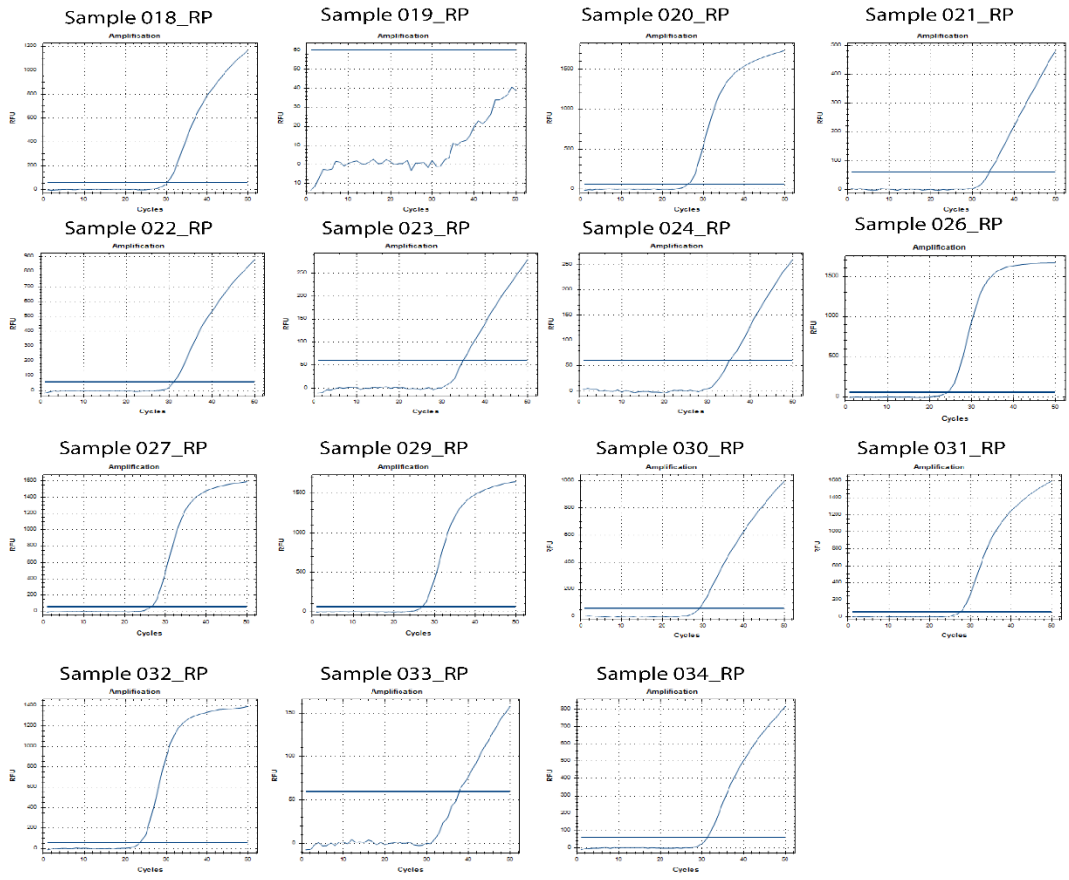


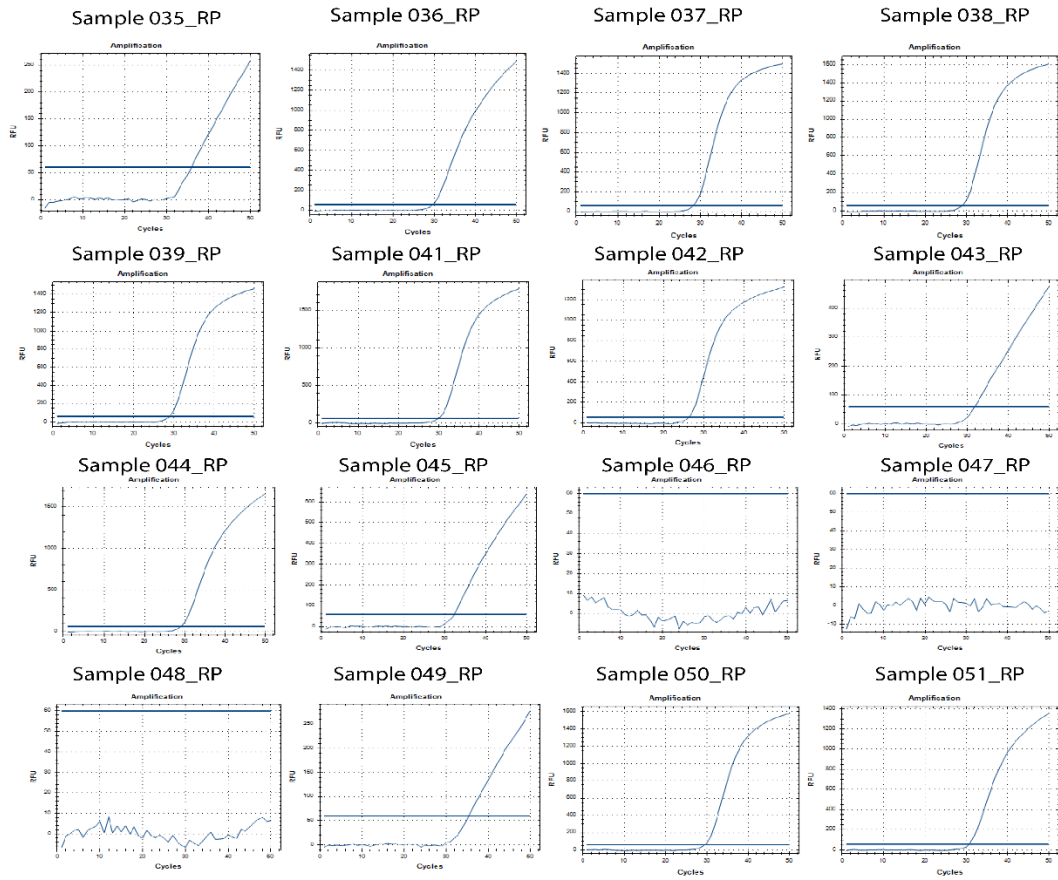


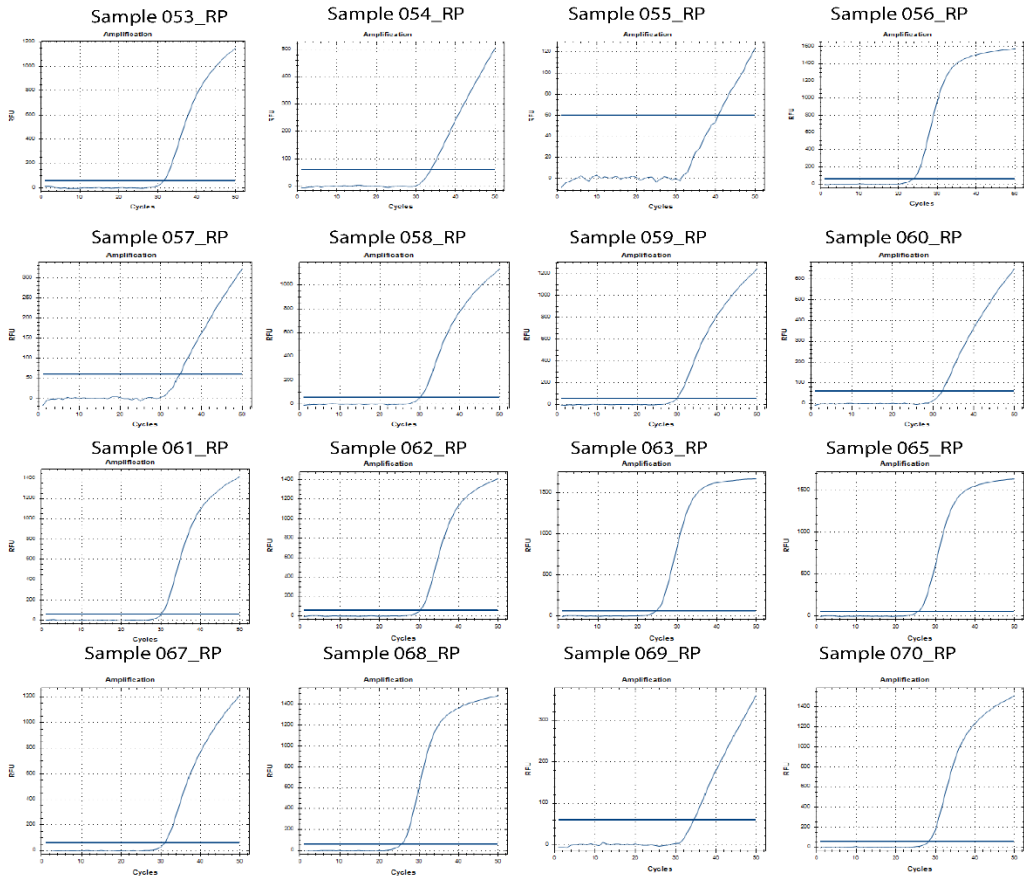


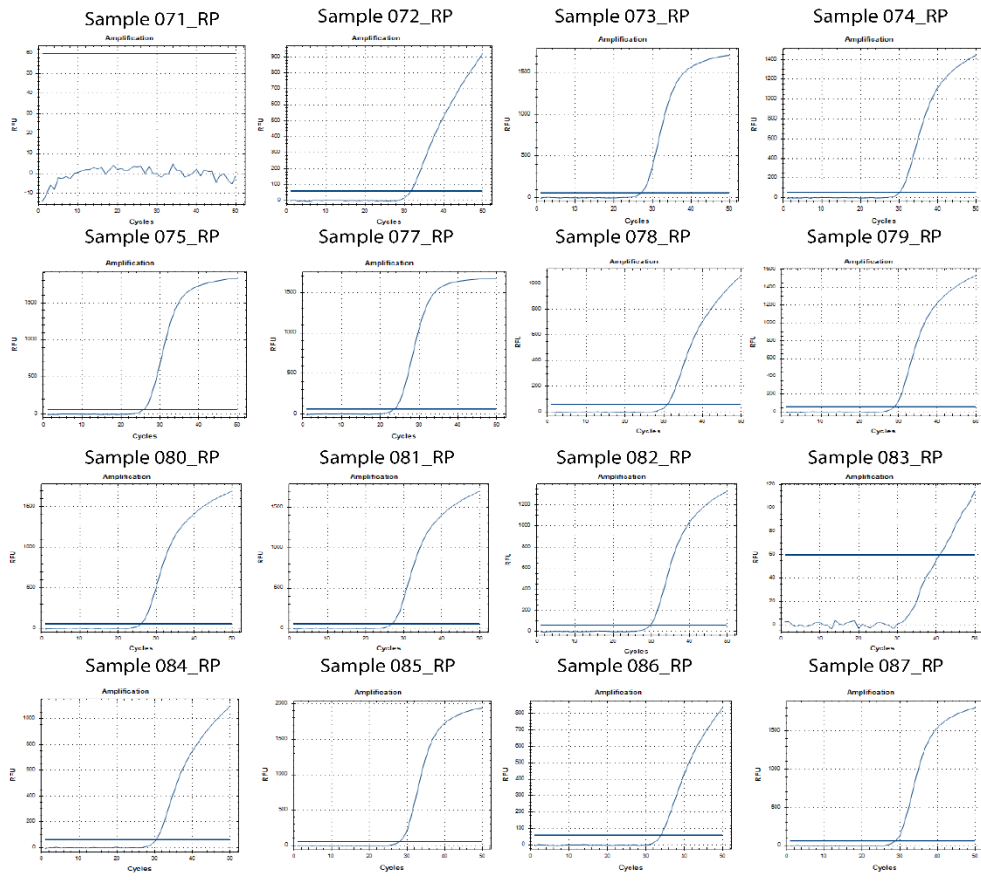
C











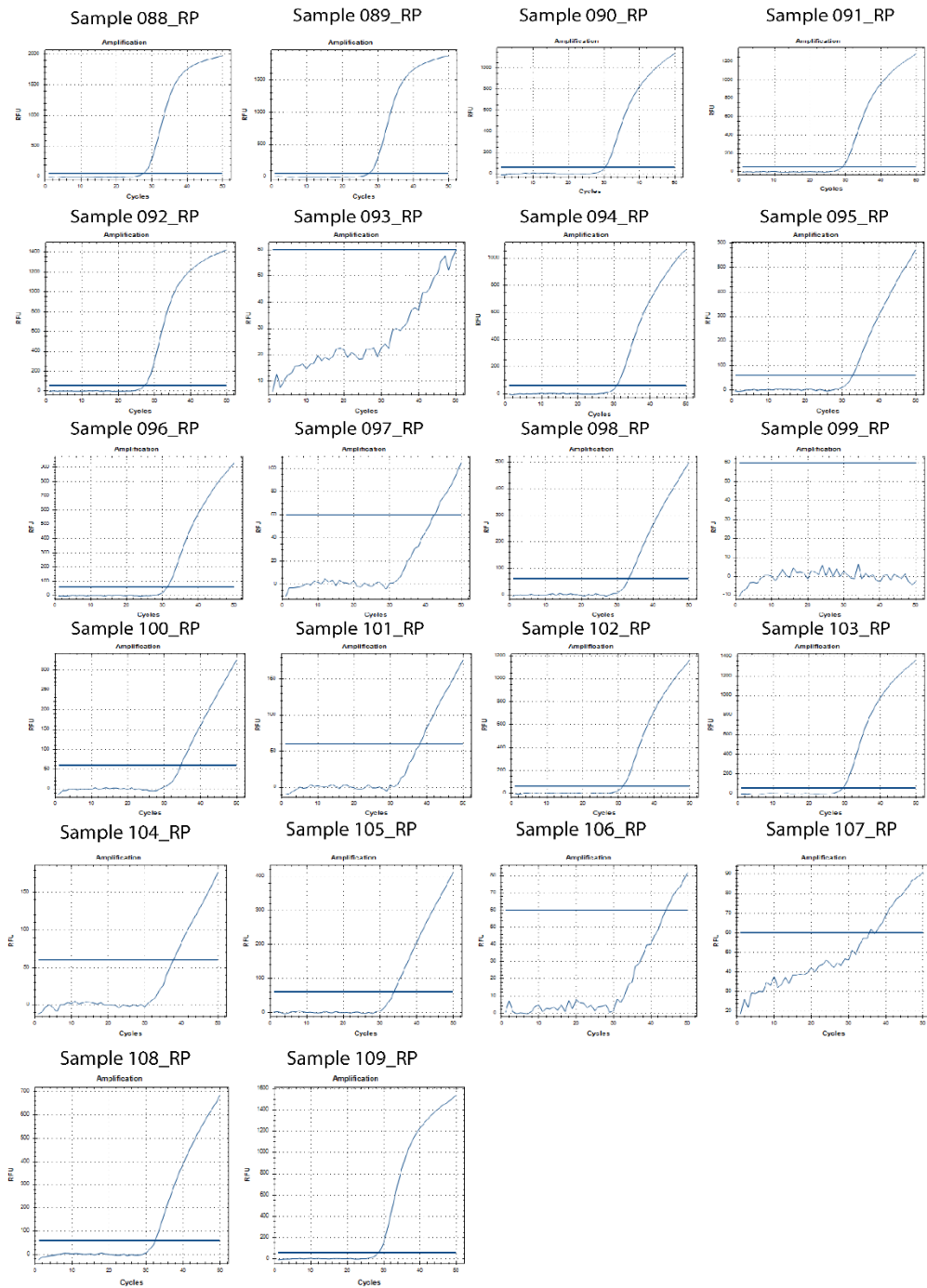


Fig. S10. Real-time amplification curves of RT-qPCR using CDC primers/probes. (A) N1 assay. (B) N2 assay. (C) RP assay. Data were exported from the CFX Maestro (Biorad).

Table S1.

Summary of RT-LAMP based technologies that have received the US FDA emergency use authorization as of July 15th, 2021. Note that multiple tests were previously approved but recently removed from the list. Information was gathered from the package inserts and patents. Some aspects of the tests are not available, so listed as not available (N/A).

Developer	Intended use ¹	Product name	Core technology	DNA polymerase	SARS-CoV-2 target(s)	Control	# reaction/ sample tested	LAMP multiplexity	Reported LoD				Samples require nucleic acid extraction prior to RT-LAMP	Reagent set up from wet reaction (no lyophilized reaction)	Additional reaction setup after RT-LAMP	Post-reaction analysis
									Copies/uL of unpurified sample	Copies/uL of extracted RNA	Copies/reaction	Copies/uL of reaction				
Mammoth Biosciences, Inc OR University of California, San Francisco (UCSF) and Mammoth Biosciences	H	SARS-CoV-2 DETECTR™ Reagent Kit	RT-LAMP, CRISPR	Bst	N	Human RP	2	Single-target LAMP	12	20	100	4	Yes, EZ1 Virus Mini Kit v2.0 with automated extraction	Yes, reagents are thawed at room temperature but kept on ice throughout setting up.	Yes, CRISPR	Yes, based on the difference of end-point fluorescence signal from baseline signal
MobileDetect Bio Inc.	H, M	MobileDetect Bio BCC19 (MD-Bio BCC19) Test Kit	RT-LAMP	Not provided	N,E	N/A	1	Two-target, single readout	75	N/A	75	3	No, 1uL VTM sample directly amplified in 25uL reaction.	Yes, reagents must be thawed on ice 30 min prior to set up.	No	Yes, cell phone analysis based on color difference of positive and negative.
SEASUN BIOMATERIALS, Inc.	H	AQ-TOP™ COVID-19 Rapid Detection Kit PLUS	RT-LAMP	Bst	N, ORF	Human RP	2	Biplexed FAM/H EX-VIC-JOE with amp control	1	5	50	1.67	Yes, multiple authorized kits	Yes, reagents are thawed at room temperature but kept on ice throughout setting up.	No	Yes, based on automatic CT call by RT-qPCR machine

Sherlock BioSciences, Inc.	H	Sherlock™ CRISPR SARS-CoV-2 Kit	RT-LAMP, CRISPR	Not provided	N, ORF	Human RP	3	Single-target LAMP	6.75	45	360	18	Yes, PureLink™ Viral RNA/DNA Mini Kit	Yes, 2 components for RT-LAMP master mix, 8 components for CRISPR reaction	Yes, CRISPR	Yes, manual calculation of signal ratio
Color Health, Inc.	H	Color SARS-CoV-2 RT-LAMP Diagnostic Assay	RT-LAMP	Not provided	N, E ²	Human RP	3	Single-target LAMP	0.75	N/A	N/A	N/A	Yes, Viral DNA/RNA 300 Kit H96 (Perkin Elmer, CMG-1033)	Yes	No	Yes, manual calculation of signal ratio
Lucira Health, Inc.	Home, H, M, W	Lucira™ CHECK-IT COVID-19 Test Kit	RT-LAMP	Bst or GspM	N (2 regions)	Multiple chambers detecting the sample, a positive internal control (PIC), and a lysis internal control (LIC).	5	Biplexed LAMP without internal control	0.9	N/A	N/A	N/A	No	No	No	No, real-time analysis based on the color change of halochromic agent(s) due to pH change as an outcome from amplification

Continued Table. S1.

Developer	Intended use	Product name	Amplicon exposure after LAMP	Estimated operating time	Test batch size (reaction, samples)	Cost	Equipment involved
Mammoth Biosciences, Inc OR University of California, San Francisco (UCSF) and Mammoth Biosciences	H	SARS-CoV-2 DETECTR™ Reagent Kit	Yes	85 min excluding analysis step 20-min automatic extraction; 30-min RT-LAMP; 15-min CRISPR (anticipated minimal 20-min hands on from thawing, mixing, and aliquoting reactions for both steps)	96 (reaction), 48 (samples)	N/A	<ul style="list-style-type: none"> • Qiagen EZ1 Advanced benchtop automated extraction (48 samples) • ABI 7500 Fast Dx Real-Time PCR system (Thermo Scientific) with software • Mini Centrifuges • Multichannel or single channel pipette and barrier tips (10 µL – 200 µL); • PCR plate/tube strip support frame/racks • PCR cooler rack
MobileDetect Bio Inc.	H, M	MobileDetect Bio BCC19 (MD-Bio BCC19) Test Kit	No	60 min excluding post-analysis step 30-min thawing reagents, 30-min RT-LAMP; (anticipated 10-min hands-on from mixing and aliquoting reagents)	8 or 96	N/A	<ul style="list-style-type: none"> • Custom heater or thermal cycler • Cell phone with software • Minivortex • Reaction set up station • Reaction analysis station • Micropipettes • Filtered tips
SEASUN BIOMATERIALS, Inc.	H	AQ-TOP™ COVID-19 Rapid Detection Kit PLUS	No	70 min excluding analysis step 30-min manual extraction; 30 min RT-LAMP (anticipated minimal 10-min hands-on from thawing, mixing, and aliquoting reactions)	96 (reaction), 48 (samples)	N/A	<ul style="list-style-type: none"> • Real-time PCR system (CFX 96 real-time PCR detection system with software CFX manager V3.1 or Applied Biosystems real-time PCR system 7500 with Software 2.0.6) • Centrifuge • Micropipettes • Filtered tips • Vortex
Sherlock BioSciences, Inc.	H	Sherlock™ CRISPR SARS-CoV-2 Kit	Yes	110 min excluding analysis step 30-min manual extraction; 40 min RT-LAMP; 10-min CRISPR (anticipated minimal 30 -min hands-on from thawing, mixing, and aliquoting reactions)	383(reaction), 30 (samples)	N/A	<ul style="list-style-type: none"> • Heat block with a heated lid capable of maintaining 61°C or PCR instrument with a heated lid • Vortex • Microcentrifuge • Cold blocks • Micropipettes • Filtered tips
Color Health, Inc.	H	Color SARS-CoV-2 RT-LAMP Diagnostic Assay	No	110 min excluding analysis step 20-min bead-based RNA extraction; 70 min RT-LAMP; (anticipated minimal 20-min hands-on from thawing, mixing, and aliquoting reactions with robots)	384 (reaction), 128(samples)	N/A	<ul style="list-style-type: none"> • Hamilton STAR/STARlet automated liquid handler with Venus 4 software • Agilent Bravo automated liquid handling platform with software

							<ul style="list-style-type: none"> • Perkin Elmer Chemagic 360 extraction instrument platform and Chemagic software v6.3.0.3 • Biotek Synergy NEO2 multi-mode microplate reader with Gen5 software v3.9
Lucira Health, Inc.	Home, H, M, W	Lucira™ CHECK-IT COVID-19 Test Kit	No	30-min sample run time (with anticipated 2-min handson). Positive samples are called as soon as finished	1	\$50/test	<ul style="list-style-type: none"> • Single-use, disposable, customized heater, reader and sample collector/transfer with 2 AA batteries

SARS-CoV-2 DETECTR Reagent Kits (53, 54)
 MobileDetect Bio BCC19 (MD-Bio BCC19) Test Kit (55, 56)
 AQ-TOP COVID-19 Rapid Detection Kit PLUS (57)
 Sherlock CRISPR SARS-CoV-2 Kit (58)
 Color SARS-CoV-2 RT-LAMP Diagnostic Assay (59)
 Lucira CHECK-IT COVID-19 Test Kit (60, 61)

1 H (High complexity CLIA labs), M (Moderate complexity CLIA labs), W (CLIA-waived, patient care settings), Home (used at home)

2 ORF assay is available but removed from the current kits.

Table. S2.

Primers, probes, and control sequences. For primers and probes F2/B2 sequences are underlined, non-template linker sequences are italicized, and adapter sequences are in bold.

SARS-CoV-2 NC1 Primers	Sequence (5' to 3')
NC1 FIP	CCACTGCGTTCTCCATTCTTTCCCGCATTACGTTTGGT
NC1 BIP	GCGATCAAACAACGTCGGTTATTGCCATGTTGAGTGAGAGCG
NC1 LF	TGGTTACTGCCAGTTGAATCT
NC1 LB + T Adapter	ACCAACACCTCACATCACACATAATAGGTTTACCCAATAATACTG CGTCTTG
NC1 F3	TGGACCCCAAATCAGCG
NC1 B3	ATCTGGACTGCTATTGGTGTTA
SARS-CoV-2 NC2 Primer	Sequence
NC2 FIP	CAGCTTCTGGCCCAGTTCCTGTGGTGGTGACGGTAAAATG
NC2 BIP	CTTCCCTATGGTGCTAACAAAGTCCAATGTGATCTTTGGTGTATTC
NC2 LF	GTAGTAGAAATACCATCTTGGACT
NC2 LB + T Adapter	ACCAACACCTCACATCACACATAATAATATGGGTTGCAACTGAG GGAG
NC2 F3	CTACTACCGAAGAGCTACCAG
NC2 B3	GCAGCATTGTTAGCAGGATTG
SARS-CoV-2 NC3 Primers	Sequence
NC3 FIP	TGTGTAGGTCAACCACGTTCTGCTTCAGCGTTCTTCGGA
NC3 BIP	GTGCCATCAAATTGGATGACAAAGGTTTTGTATGCGTCAATATGCT
NC3 LF + T Adapter	ACCAACACCTCACATCACACATAATATCCATGCCAATGCGCGAC A
NC3 LB	CCAAATTTCAAAGATCAAGTCAT
NC3 F3	GACCAGGAACTAATCAGACAAG
NC3 B3	GCTTGAGTTTCATCAGCCTTC
IAC (NC1) primer	Sequence
IAC FL + C Adapter	ACCACACCTACCACCACTAATAACTAACTCCAGCCATCCTCACCA TC
Target UDP	Sequence
CoV UDP Probe	FITC – CCATCAGCACCAAGACTACCCACCTCGCCACCAAACCAACACCTC ACATCACACATAATA
CoV UDP Quencher	TTGGTGGCGAGGTGGGTAGTCTTGGTGCTGATGG – Iowa Black® FQ
Control UDP	Sequence
IAC UDP Probe	Tex615 – CCTGACCACTTCCGAACCCAACCACCTACGACAGACCACACCTAC CACCACTAATAACTAA
IAC UDP Quencher	CTGTCGTAGGTGGTTGGGTTCCGGAAGTGGTCAGG – BHQ2
IAC Template	Sequence
IAC (NC1) ssDNA	AAT GGA CCC CAA AAT CAG CGA AAT GCA CCC CGC ATT ACG TTT GGT GGA CCC TCT GGA GTC AAT GGG TGG TGC CAG AAT GGA GAA CGC AGT GGG GCG CGA TCA AAA CAA CGT CGG CCC CAA GTT GAT CTC CAG CCA TCC TCA CCA TCG TTC ACC GCT CTC ACT CAA CAT GGC AAG AAT TAA CAC CAA TAG CAG TCC AGA TG

Sample transfer methods at the POC

Volumetric transfer pipettes are used in POC tests, but we have not identified a unified dispenser used in commercial pathogen tests. A unified dispenser integrating the swab and the buffer container in a single unit could reduce opportunities for sample mix-up when multiple samples are processed simultaneously. A simple workflow is crucial, especially in busy settings like clinics. However, in our hands, the in-house built dispenser led to variable dispensed fluid volumes and had a higher failure rate than those of the transfer pipette method. While the unified dispenser has many attractive features, we would not recommend using this in-house assembled dispenser unit until the method has been optimized to achieve a more accurately dispensed volume.

Table. S3.

Feedback from the HCWs

Among HCWs, 30% (3/10) reported problems dispensing the fluid using the unified system. However, 20% (2/10) of HCWs agreed that the unified dispenser offered an advantage in its similarity to other tools used in healthcare settings, and 30% (3/10) HCWs were concerned about contaminating the sample or the environment with the transfer pipette compared to the unified dispenser system. Only 1/10 (10%) HCW preferred the smallest tube (0.2mL) for either method, and 5/10 (50%) reported that larger (1.5mL) tubes were helpful for the unified system, while 40% (4/10) of HCWs said receptacle size did not make a difference when using the transfer pipette, and none reported preference for tube size when using the unified dispenser system. HCWs reported higher confidence in correctly completing the second kit compared to the first kit of each method, indicating a similar learning curve.

(A) User preference for reaction tube size

Note: Cells with 0% response were left empty to aid data visualization.

Question	User response, n (%)				
	0.2 mL	0.5 mL	1.5 mL	0.5mL or 1.5mL	no difference
Which tube size were you most confident using with the unified dispenser swab?		4 (40%)	5 (50%)	1 (10%)	
Which tube size were you most confident using with the transfer pipette?	1 (10%)	4 (40%)	1 (10%)		4 (40%)

(B) User responses to survey questions during sample transfer usability testing.

Users were asked to provide their response on a Likert scale: (1) Not at all, (2) Slightly, (3) Somewhat, (4) Fairly, (5) Completely. Note: Phrasing of the questions below was slightly modified to be clear outside of the context of the written protocol/survey ([original survey here](#)). Cells with 0% response were left empty to aid data visualization.

Question	User response, n (%)				
	(1)	(2)	(3)	(4)	(5)

How confident were you that you added the correct amount of liquid to each reaction tube using the unified dispenser system ?	3 (30%)	3 (30%)	4 (40%)
How confident were you that you completed the protocol correctly using the unified dispenser system with the first kit ?	2 (20%)	1 (10%)	4 (40%)
How confident were you that you completed the protocol correctly using the unified dispenser system with the second kit ?		5(50%)	5 (50%)
How confident were you that you added the correct amount of liquid to each reaction tube using the transfer pipette ?	2 (20%)	2(20%)	6 (60%)
How confident were you that you completed the protocol correctly using the transfer pipette with the first kit ?	3 (30%)	4 (40%)	3 (30%)
How confident were you that you completed the protocol correctly using the transfer pipette with the second kit ?		5 (50%)	5 (50%)
How confident were you that you completed the on-screen instructions correctly?	1 (10%)	4 (40%)	5 (50%)

(C) User reported errors/challenges between two sample transfer methods. Cells with no response were left empty to aid data visualization.

Reported error	Sample transfer method	
	Number of occurrences for the unified dispensing system	Number of occurrences for the transfer pipette
The transfer method was hard to aim at the receiving reaction tube.	1	
Transfer method dripped/leaked before dispensing to the reaction tube.	2	
The materials were too small or difficult to handle.		3
It was hard to execute specific instructions due to unfamiliarity with the sample transfer device.	2	1
Challenging to dispense a consistent amount of fluid.	3	
Not confident liquid was dispensed to the tube.		2
Concerned about contaminating samples or the environment.		3

Table. S4.

Detailed reagent and device cost at a production scale of 10,000 units

Item	Supplier	Cost/device (US\$)
Detector boards	Macrofab	\$7 each x 2 (\$14 total)
Main board	Macrofab	\$25 each
LED board	Macrofab	\$9 each
Lid Heater	Oshpark	\$7 each
Heat block	Bryan Willman	\$12 each
Housing	Xometry – HP MultiJet Fusion 3D printing, no volume discount	\$50 (costs here should be reduced for scale-up production)
Red filters	Newport	\$10 each, \$40 in total
Green filters	Newport	\$20 each, \$80 in total
Assembly	N/A	\$30 (half an hour assembly time at \$60/hour cost)
	Total	\$267 per unit

Item	Supplier	Cost/device (US\$)
Detector boards	Macrofab	\$7 each x 2 (\$14 total)
Main board	Macrofab	\$25 each
LED board	Macrofab	\$9 each
Lid Heater	Oshpark	\$7 each
Heat block	Bryan Willman	\$12 each
Housing	Xometry – HP MultiJet Fusion 3D printing, no volume discount	\$50 (costs here should be reduced for scale-up production)
Red filters	Newport	\$10 each, \$40 in total
Green filters	Newport	\$20 each, \$80 in total
Assembly	N/A	\$30 (half an hour assembly time at \$60/hour cost)
	Total	\$267 per unit

Table S5.
Consumable costs per test

Item	Supplier	Costs per kit (US\$)
Sampling components (\$2 maximum)	Multiple sources	\$2
Desiccant	Multiple sources	\$0.5
PCR tube	Multiple sources	Negligible
DNA polymerase	Produced in-house	Negligible
Reverse transcriptase	New England Biolabs	\$3.5
Thermostable inorganic pyrophosphatase	New England Biolabs	\$0.23
Primers	Integrated DNA Technologies	\$0.03
Fluorescent probe/quenchers	Integrated DNA Technologies	\$0.24
Triton-X100	Sigma-Aldrich	Negligible
dNTPs	New England Biolabs	\$0.38
Mannitol	OPS Diagnostics	Negligible
DL-Dithiothreitol (DTT)	Promega	Negligible
Nuclease-free water	VWR	Negligible
1X Tris low-EDTA buffer	VWR	Negligible
Rnasin ribonuclease inhibitor	Promega	\$0.71
DNA internal amplification control	Integrated DNA Technologies	\$0.01
Cost of goods		\$8.00